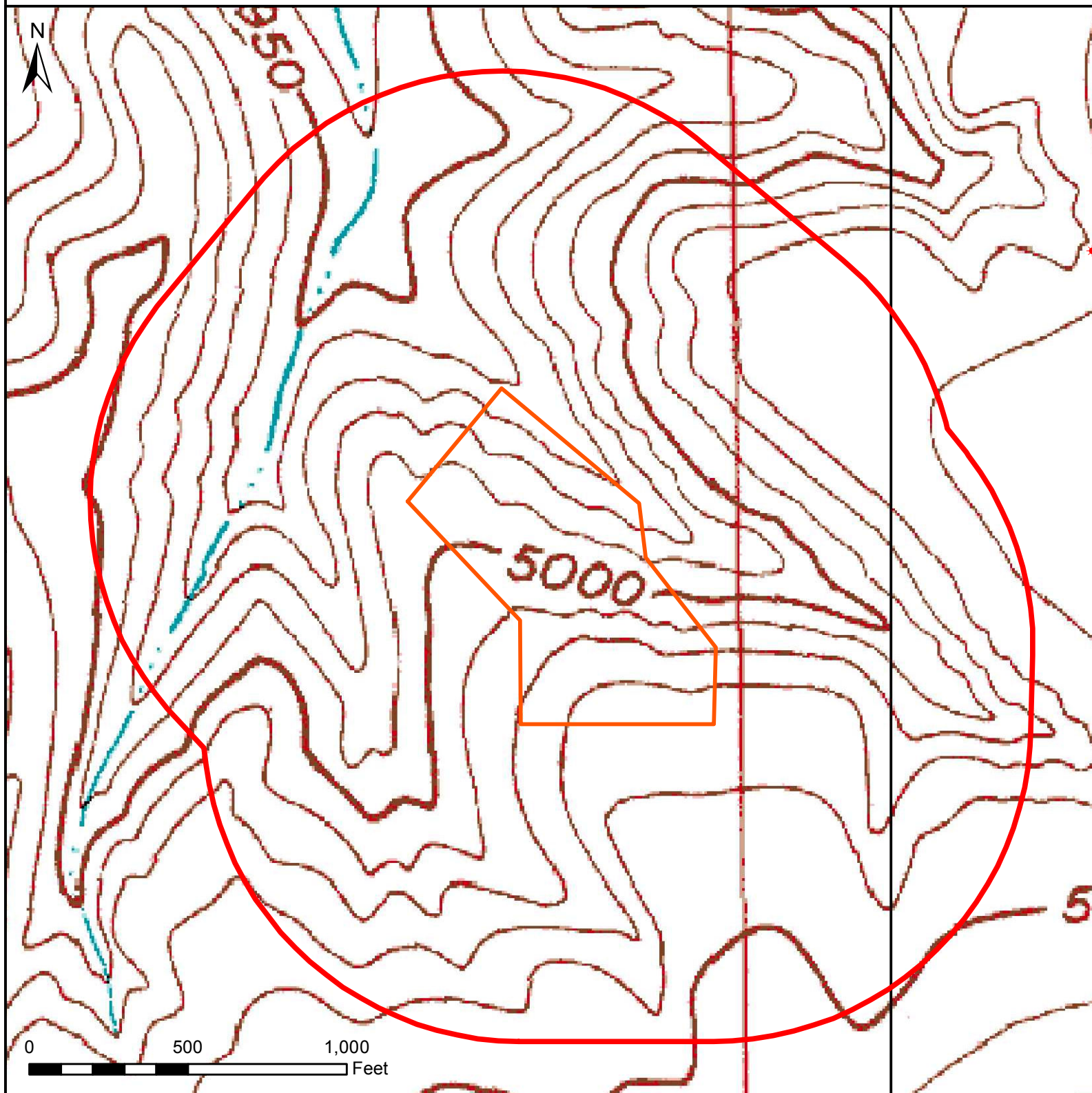


# HYDROLOGY MAP

## WILSON RANCH 5C-27HZ






### Nearest Surface Water Feature

Intermittent Stream: 470' W, Elev 4957'  
Loc Elev: 4997.4'

All measurements are made from  
edge of disturbed area.

### Legend

-  1000' buffer
-  Well pad (proposed)
-  Existing oil/gas well (COGCC)



Date created: 12/29/2014  
Created by: APC Regulatory GIS  
Scale: 1:5,000  
Projection: NAD83 UTM 13N