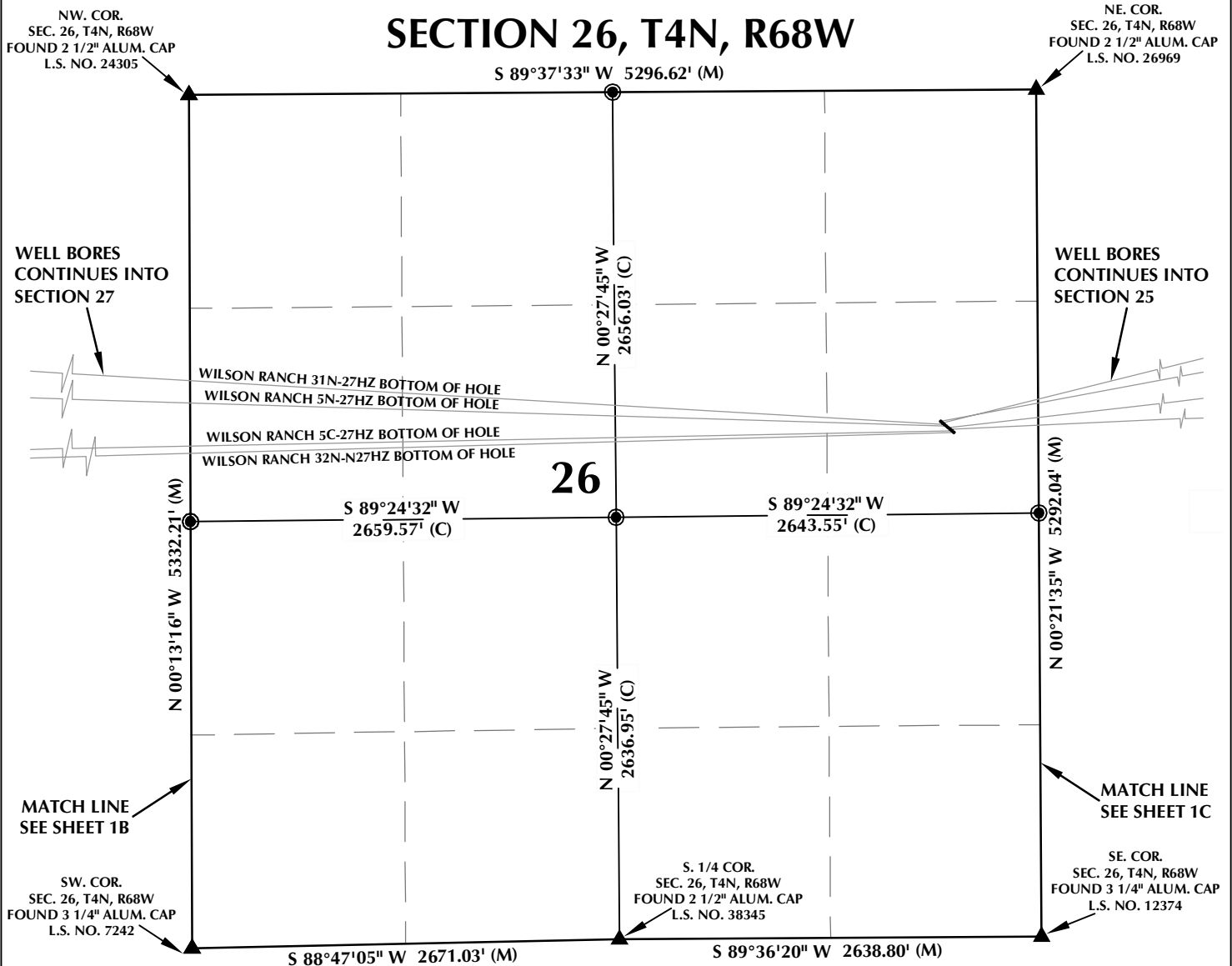


# MULTI-WELL PLAN SECTION 26, T4N, R68W



## WELL NOTES:

**WHISPER ROCK 3N-25HZ**  
SURFACE: 2070' FNL, 609' FEL  
BOTTOM HOLE: 1120' FNL, 482' FEL

**WHISPER ROCK 1C-25HZ**  
SURFACE: 2080' FNL, 598' FEL  
BOTTOM HOLE: 806' FNL, 460' FEL

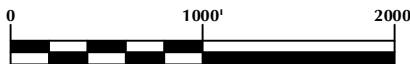
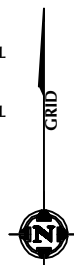
**WHISPER ROCK 4N-25HZ**  
SURFACE: 2109' FNL, 563' FEL  
BOTTOM HOLE: 1565' FNL, 460' FEL

**WHISPER ROCK 2C-25HZ**  
SURFACE: 2119' FNL, 552' FEL  
BOTTOM HOLE: 1950' FNL, 472' FEL

## WILSON RANCH 5C-27HZ

SURFACE: 2129' FNL, 540' FEL  
BOTTOM HOLE: 2153' FNL, 472' FWL

**WILSON RANCH 32N-N27HZ**  
SURFACE: 2138' FNL, 529' FEL  
BOTTOM HOLE: 2235' FNL, 461' FWL



SCALE: 1" = 1000'

## NOTES:

- ▲ INDICATES FOUND SECTION CORNER
- INDICATES CALCULATED CORNER
- BASIS OF BEARING DERIVED FROM COLORADO COORDINATE SYSTEM 1983 NORTH ZONE UNLESS OTHERWISE NOTED.
- ALL MEASURED DISTANCES ARE GRID.
- COMBINED SCALE FACTOR: .99971841
- WELL FOOTAGES ARE MEASURED AT RIGHT ANGLES TO THE SECTION LINES.

## WELL PAD - WILSON RANCH 5C-27HZ

MULTI-WELL PLAN  
WHISPER ROCK 3N-25HZ, WHISPER ROCK 1C-25HZ,  
WILSON RANCH 31N-27HZ, WILSON RANCH 5N-27HZ,  
WHISPER ROCK 4N-25HZ, WHISPER ROCK 2C-25HZ,  
WILSON RANCH 5C-27HZ & WILSON RANCH 32N-N27HZ  
LOCATED IN SECTIONS 25, 26 & 27  
T4N, R68W, 6TH P.M.  
WELD COUNTY, COLORADO

**Kerr-McGee Oil &  
Gas Onshore L.P.**  
1099 18th Street  
Denver, Colorado 80202



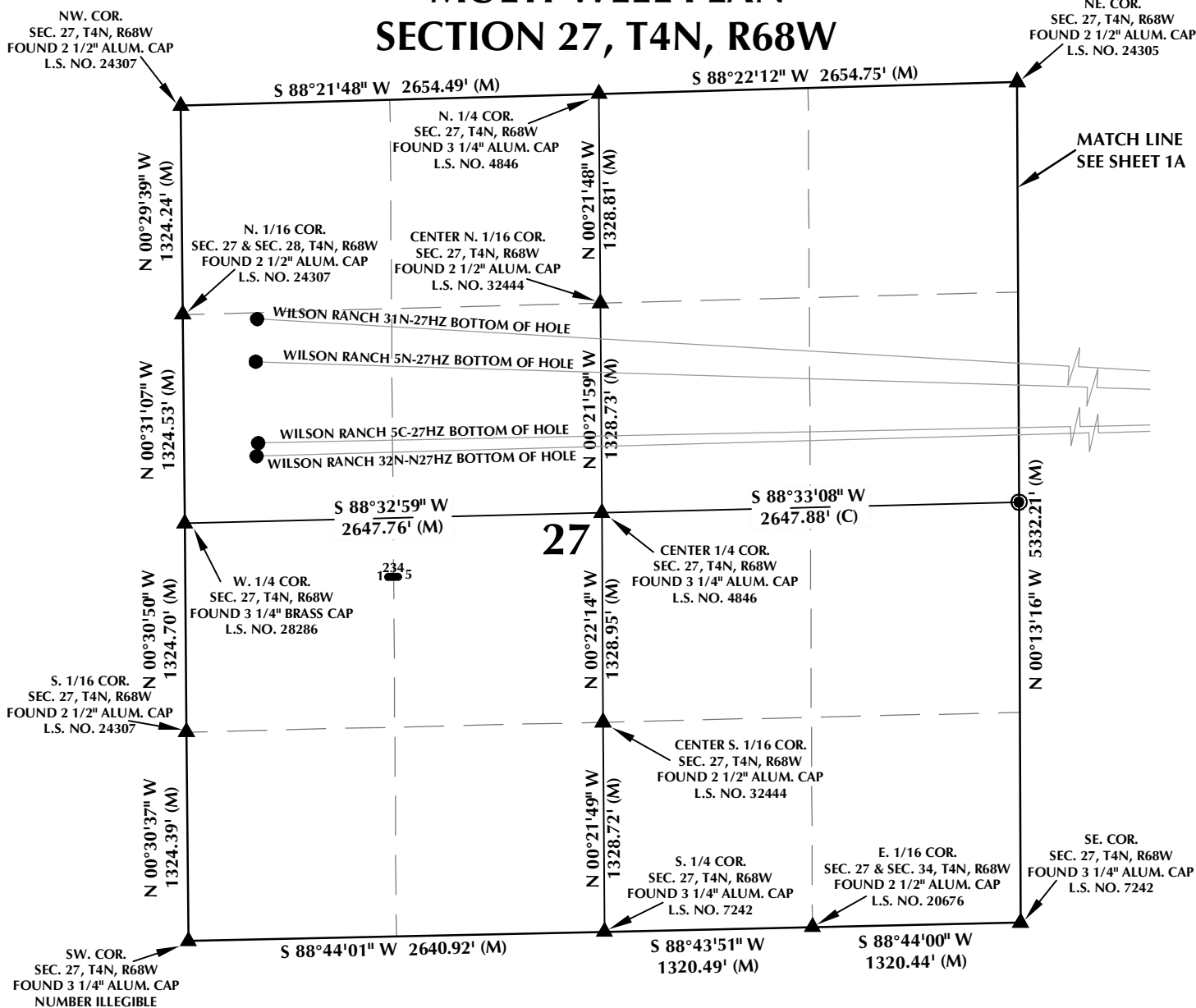
## CONSULTING, LLC

**SHERIDAN OFFICE**  
2155 North Main Street  
Sheridan, Wyoming 82801  
Phone 307-674-0609

**LOVELAND OFFICE**  
1635 Foxtrail Drive, Suite 204  
Loveland, Colorado 80538  
Phone 970-776-4331

DRAFTED BY:	LMO	CHECKED BY:	BJR	SHEET NO:
DATE DRAFTED:	9/18/14	DATE SURVEYED:	4/23/14	1A
REVISED:	12/17/14	FILE NAME:	14-19	1A OF 2

# MULTI-WELL PLAN SECTION 27, T4N, R68W



## WELL NOTES:

WHISPER ROCK 3N-25HZ  
SURFACE: 2070' FNL, 609' FEL  
BOTTOM HOLE: 1120' FNL, 482' FEL

WHISPER ROCK 1C-25HZ  
SURFACE: 2080' FNL, 598' FEL  
BOTTOM HOLE: 806' FNL, 460' FEL

WILSON RANCH 31N-27HZ  
SURFACE: 2090' FNL, 586' FEL  
BOTTOM HOLE: 1365' FNL, 472' FWL

WILSON RANCH 5N-27HZ  
SURFACE: 2099' FNL, 575' FEL  
BOTTOM HOLE: 1636' FNL, 460' FWL

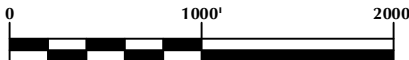
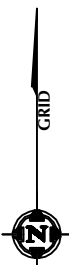
WHISPER ROCK 4N-25HZ  
SURFACE: 2109' FNL, 563' FEL  
BOTTOM HOLE: 1565' FNL, 460' FEL

WHISPER ROCK 2C-25HZ  
SURFACE: 2119' FNL, 552' FEL  
BOTTOM HOLE: 1950' FNL, 472' FEL

## WILSON RANCH 5C-27HZ

SURFACE: 2129' FNL, 540' FEL  
BOTTOM HOLE: 2153' FNL, 472' FWL

WILSON RANCH 32N-N27HZ  
SURFACE: 2138' FNL, 529' FEL  
BOTTOM HOLE: 2235' FNL, 461' FWL



SCALE: 1" = 1000'

## NOTES:

- ▲ INDICATES FOUND SECTION CORNER
- INDICATES CALCULATED CORNER
- BASIS OF BEARING DERIVED FROM COLORADO COORDINATE SYSTEM 1983 NORTH ZONE UNLESS OTHERWISE NOTED.
- ALL MEASURED DISTANCES ARE GRID.  
COMBINED SCALE FACTOR: .99971841
- WELL FOOTAGES ARE MEASURED AT RIGHT ANGLES TO THE SECTION LINES.

## WELL PAD - WILSON RANCH 5C-27HZ

MULTI-WELL PLAN  
WHISPER ROCK 3N-25HZ, WHISPER ROCK 1C-25HZ,  
WILSON RANCH 31N-27HZ, WILSON RANCH 5N-27HZ,  
WHISPER ROCK 4N-25HZ, WHISPER ROCK 2C-25HZ,  
WILSON RANCH 5C-27HZ & WILSON RANCH 32N-N27HZ  
LOCATED IN SECTIONS 25, 26 & 27  
T4N, R68W, 6TH P.M.  
WELD COUNTY, COLORADO

**Kerr-McGee Oil &  
Gas Onshore L.P.**  
1099 18th Street  
Denver, Colorado 80202



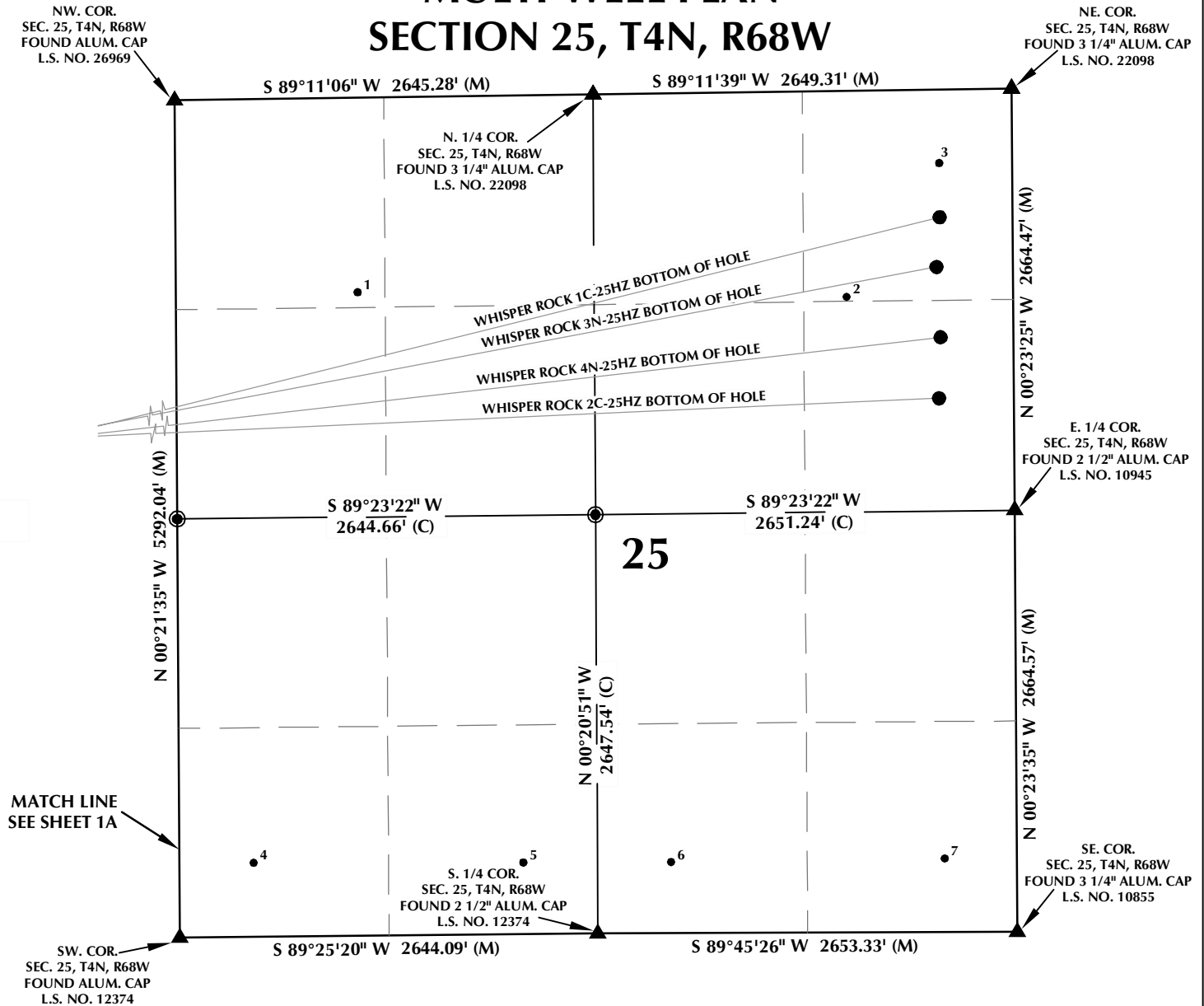
## CONSULTING, LLC

SHERIDAN OFFICE  
2155 North Main Street  
Sheridan, Wyoming 82801  
Phone 307-674-0609

LOVELAND OFFICE  
1635 Foxtrail Drive, Suite 204  
Loveland, Colorado 80538  
Phone 970-776-4331

DRAFTED BY:	LMO	CHECKED BY:	BJR	SHEET NO:
DATE DRAFTED:	9/18/14	DATE SURVEYED:	4/23/14	<b>1B</b>
REVISED:	12/17/14	FILE NAME:	14-19	1B OF 2

# MULTI-WELL PLAN SECTION 25, T4N, R68W

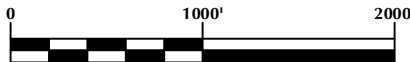
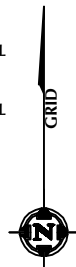


## WELL NOTES:

WHISPER ROCK 3N-25HZ  
SURFACE: 2070' FNL, 609' FEL  
BOTTOM HOLE: 1120' FNL, 482' FEL  
WHISPER ROCK 1C-25HZ  
SURFACE: 2080' FNL, 598' FEL  
BOTTOM HOLE: 806' FNL, 460' FEL  
WILSON RANCH 31N-27HZ  
SURFACE: 2090' FNL, 586' FEL  
BOTTOM HOLE: 1365' FNL, 472' FWL  
WILSON RANCH 5N-27HZ  
SURFACE: 2099' FNL, 575' FEL  
BOTTOM HOLE: 1636' FNL, 460' FWL  
WHISPER ROCK 4N-25HZ  
SURFACE: 2109' FNL, 563' FEL  
BOTTOM HOLE: 1565' FNL, 460' FEL  
WHISPER ROCK 2C-25HZ  
SURFACE: 2119' FNL, 552' FEL  
BOTTOM HOLE: 1950' FNL, 472' FEL

## WILSON RANCH 5C-27HZ

SURFACE: 2129' FNL, 540' FEL  
BOTTOM HOLE: 2153' FNL, 472' FWL  
WILSON RANCH 32N-N27HZ  
SURFACE: 2138' FNL, 529' FEL  
BOTTOM HOLE: 2235' FNL, 461' FWL



SCALE: 1" = 1000'

## NOTES:

- ▲ INDICATES FOUND SECTION CORNER
- INDICATES CALCULATED CORNER
- BASIS OF BEARING DERIVED FROM COLORADO COORDINATE SYSTEM 1983 NORTH ZONE UNLESS OTHERWISE NOTED.
- ALL MEASURED DISTANCES ARE GRID.
- COMBINED SCALE FACTOR: .99971841
- WELL FOOTAGES ARE MEASURED AT RIGHT ANGLES TO THE SECTION LINES.

## WELL PAD - WILSON RANCH 5C-27HZ

MULTI-WELL PLAN  
WHISPER ROCK 3N-25HZ, WHISPER ROCK 1C-25HZ,  
WILSON RANCH 31N-27HZ, WILSON RANCH 5N-27HZ,  
WHISPER ROCK 4N-25HZ, WHISPER ROCK 2C-25HZ,  
WILSON RANCH 5C-27HZ & WILSON RANCH 32N-N27HZ  
LOCATED IN SECTIONS 25, 26 & 27  
T4N, R68W, 6TH P.M.  
WELD COUNTY, COLORADO

**Kerr-McGee Oil &  
Gas Onshore L.P.**  
1099 18th Street  
Denver, Colorado 80202



## CONSULTING, LLC

SHERIDAN OFFICE  
2155 North Main Street  
Sheridan, Wyoming 82801  
Phone 307-674-0609

LOVELAND OFFICE  
1635 Foxtrail Drive, Suite 204  
Loveland, Colorado 80538  
Phone 970-776-4331

DRAFTED BY:	LMO	CHECKED BY:	BJR	SHEET NO:
DATE DRAFTED:	9/18/14	DATE SURVEYED:	4/23/14	1C
REVISED:	12/17/14	FILE NAME:	14-19	1C OF 2

# MULTI-WELL PLAN

## SECTION 27, T4N, R68W

NUMBER	WELL NAME	NAD 83	
		LATITUDE	LONGITUDE
1	BDE 13-27	40.283341°	-104.994080°
2	BDE 12-27	40.283343°	-104.994025°
3	BDE 27NW	40.283343°	-104.993972°
4	BDE 22-27	40.283344°	-104.993916°
5	BDE 23-27	40.283343°	-104.993860°

### NOTES:

- \* INDICATES EXISTING WELLS THAT WERE NOT SURVEYED BUT DERIVED FROM COLORADO OIL AND GAS CONSERVATION COMMISSION (COGCC).

**EXISTING WELL EXHIBIT**  
**SECTIONS 26 & 27, T4N, R68W, 6TH P.M.**  
**WELD COUNTY, COLORADO**

**Kerr-McGee Oil &  
Gas Onshore L.P.**  
**1099 18th Street**  
**Denver, Colorado 80202**



### CONSULTING, LLC

**SHERIDAN OFFICE**  
2155 North Main Street  
Sheridan, Wyoming 82801  
Phone 307-674-0609

**LOVELAND OFFICE**  
1635 Foxtrail Drive, Suite 204  
Loveland, Colorado 80538  
Phone 970-776-4331

DRAFTED BY:	LMO	CHECKED BY:	BJR	<b>2A</b> 2A OF 2
DATE DRAFTED:	9/18/14	DATE SURVEYED:	4/23/14	
REVISED:		FILE NAME:	14-19	

# MULTI-WELL PLAN

## SECTION 25, T4N, R68W

NUMBER	WELL NAME	NAD 83	
		LATITUDE	LONGITUDE
1	WILSON RANCH USX S 25-19	40.288559°	-104.956600°
2	BUJALSKI USX S 25-17	40.288426°	-104.945517°
3	BUJALSKI 41-25	40.290738°	-104.943397°
4	WILSON 14-25	40.278671°	-104.959035°
5	WILSON 24-25	40.278650°	-104.952922°
6	VRANJES 34-25	40.278644°	-104.949574°
7	VRANJES 44-25	40.278674°	-104.943367°

### NOTES:

- \* INDICATES EXISTING WELLS THAT WERE NOT SURVEYED BUT DERIVED FROM COLORADO OIL AND GAS CONSERVATION COMMISSION (COGCC).

EXISTING WELL EXHIBIT  
SECTION 25, T4N, R68W, 6TH P.M.  
WELD COUNTY, COLORADO

**Kerr-McGee Oil &  
Gas Onshore L.P.**  
1099 18th Street  
Denver, Colorado 80202



### CONSULTING, LLC

SHERIDAN OFFICE  
2155 North Main Street  
Sheridan, Wyoming 82801  
Phone 307-674-0609

LOVELAND OFFICE  
1635 Foxtrail Drive, Suite 204  
Loveland, Colorado 80538  
Phone 970-776-4331

DRAFTED BY:	LMO	CHECKED BY:	BJR	SHEET NO: <b>2B</b> 2B OF 2
DATE DRAFTED:	9/18/14	DATE SURVEYED:	4/23/14	
REVISED:		FILE NAME:	14-19	