

COLUMBINE LOGGING

Scale: 5" / 100'
Measured Depth Log

Well Name Brook LC28-75-1BHNC

Location SWSE SEC 28 T9N R59W

State COLORADO

County WELD

Country USA

Rig Number H&P 273

API Number 05-123-38845-0000

Field WILDCAT

Region DJ BASIN

Drilling Completed 7/19/2014

Spud Date 7/13/2014

Surface Coordinates 340' FSL; 1960' FEL

Ground Elevation 4,843'

K.B. Elevation 4,867'

Logged Interval 628' To 10,435'

Total Depth 10,435'

Formation NIOBRARA

Type of Drilling Fluid LSND

Other Symbols

Oil Show

- DEAD
- EVEN
- QUESTIONABLE
- SPOTTED STAINING

Porosity

- E EARTHY
- F FENESTRAL
- F FRACTURE
- X INTERCRYSTALLINE
- Q INTEROOLITIC

MOLDIC

ORGANIC

PINPOINT

VUGGY

Engineering

BIT

CONNECTION (LEFT)

CONNECTION (RIGHT)

CONNECTION GAS

CORE - LOST

CORE - RECOVERED

DST INTERVAL

FAULT

FORMATION TOP

GAS SHOW

MINDEPTH MN DEPTH

NORMAL FAULT

OIL SHOW

OVERTURNED STRATA

REVERSE FAULT

SIDEWALL CORE (LEFT)

SIDEWALL CORE (RIGHT)

SLIDE

SURVEY

TRIP GAS

WIRELINE TESTED - LEFT

WIRELINE TESTED - RT

Rounding

ANGULAR

ROUNDED

SUBANG

SUBRND

Textures

BOUNDSTONE

CHALKY

CRYPTOXLN

E EARTHY

FINELYXLN

GRAINSTONE

L LITHOGRAPHIC

MX MICROXLN

MS MUDSTONE

PS PACKSTONE

WS WACKSTONE

Sorting

M MODERATE

P POOR

W WELL

Zone Color Coding

- Oil
- Condensate
- Gas
- Note
- Core
- Pressure
- Error
- Water
- Seal

Accessories

Fossils

- ALGAE
- AMPHIPORA
- BELEMNITE
- BIOCLASTIC
- BRACHIOPOD
- BRYOZOA
- CEPHALOPOD
- CORAL

F FOSSIL

GASTROPOD

INOCERAMUS

OOLITE

OSTRACOD

PELECYPOD

PELLET

PISOLITE

PLANT REMAINS

PLANT PRODES

ANHYDRITIC

ARGILLACEOUS

ARGILLITE GRAIN

BENTONITE

BITUMENOUS SUBSTANCE

BRECCIA FRAGMENTS

CALCAREOUS

CARBONACEOUS FLAKES

CHTDK

CLUTL

FERRUGINOUS

GLAUCONITE

GYPSIFEROUS

HEAVY MINERAL

KAOLIN

MARLSTONE

MINERAL CRYSTALS

NODULES

PHOSPHATE PELLETS

TYNITE

TUFFACEOUS

Stringer

- ANHYDRITE STRINGER
- BENTONITE STRINGER
- COAL STRINGER
- DOLOMITE STRINGER
- GYPSUM STRINGER
- LIMESTONE STRINGER
- MARLSTONE (OIL) STRINGER

CORAL
CRINOID
ECHINOID
FISH
FORAMINIFERA

PLANT SPORES
SCAPHOPOD
STROMATOPOROID

Minerals

CHERT
COAL - THIN BEDS
DOLOMITIC
FELDSPAR
FERRUGINOUS PELLET

PYRITE
SALT CAST
SANDY
SILICEOUS
SILTY

MARLSTONE (CALC) STRG
MARLSTONE (DOL) STRG
SANDSTONE STRINGER
SHALE STRINGER
SILTSTONE STRINGER

Rock Types

UNKNOWN
CHALK
MARLSTONE
SANDSTONE
SHALY SANDSTONE
SILTY SHALE
ANHYDRITE
BENTONITE
BRECCIA

CEMENT
CHERT
CLAY CHOKE SAND
CLAYSTONE
COAL
CONGLOMERATE
DOLOMITE
GRANITE
GYPSUM

IGNEOUS
LIMESTONE
SIDERITE or LIMONITE
METAMORPHIC
NO SAMPLE
SALT
SALT- PEPPER SAND
SHALE
SHALE COLORED

SHALE GRAY
SHALY SILTSTONE
SILTSTONE
TILL
TUFF
WELDED TUFF

Operator

Company NOBLE ENERGY INC.

Address 1625 Broadway Suite 2200
Denver, CO 80202

Other

Wellsite Geologist #1 Kevin Donahue

Wellsite Geologist #2 Tim Bright

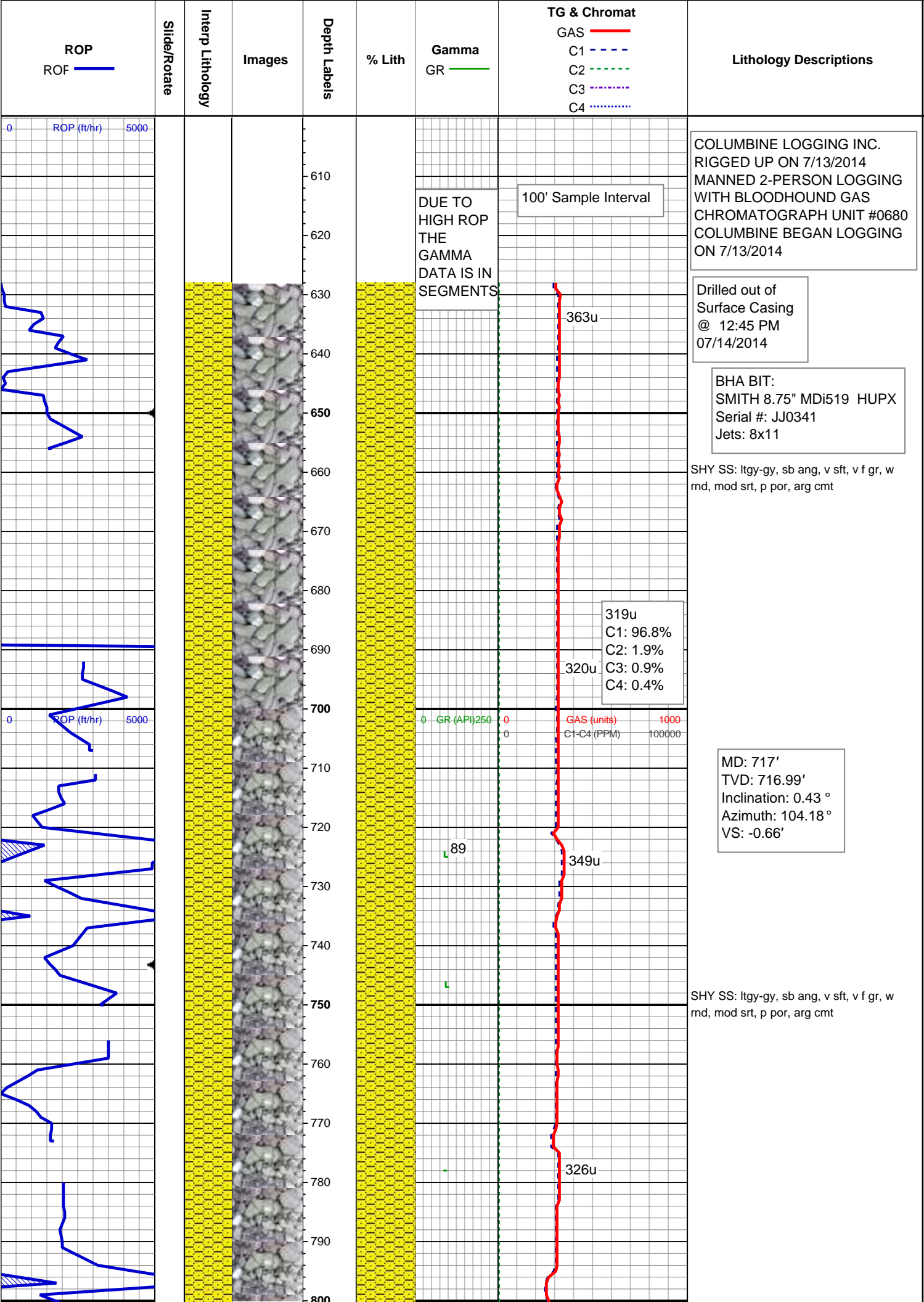
Wellsite Geological Services Provided By Columbine Logging Inc.

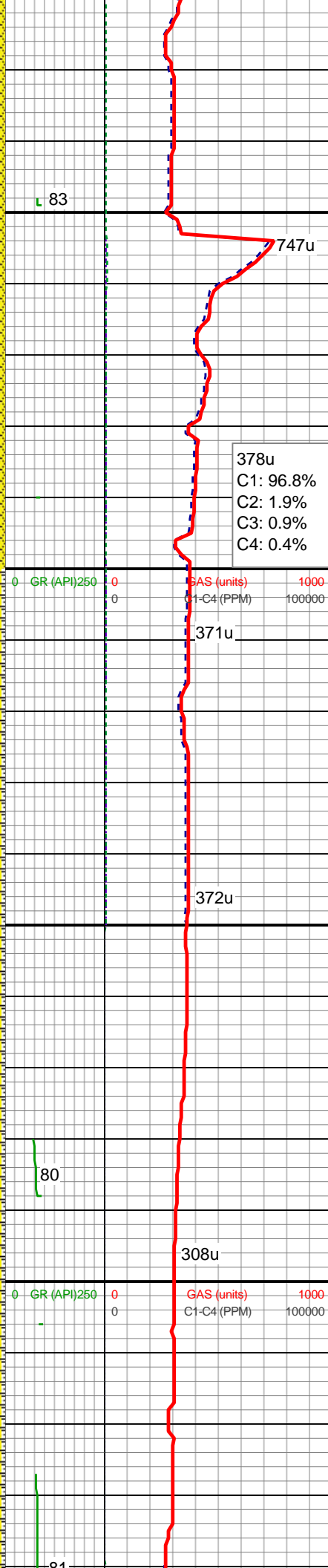
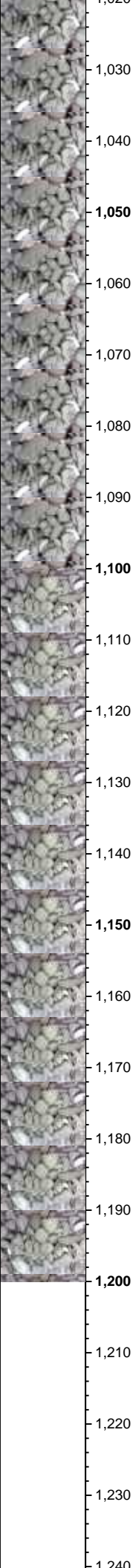
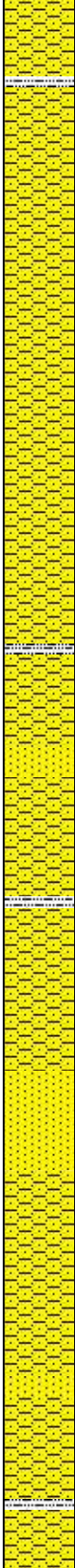
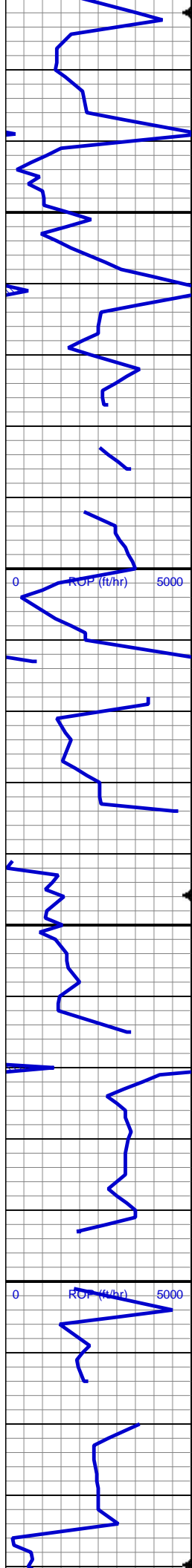
Geologist

Name Renee Clackler

Company NOBLE ENERGY INC.

Address 1625 Broadway Suite 2200
Denver, CO 80202

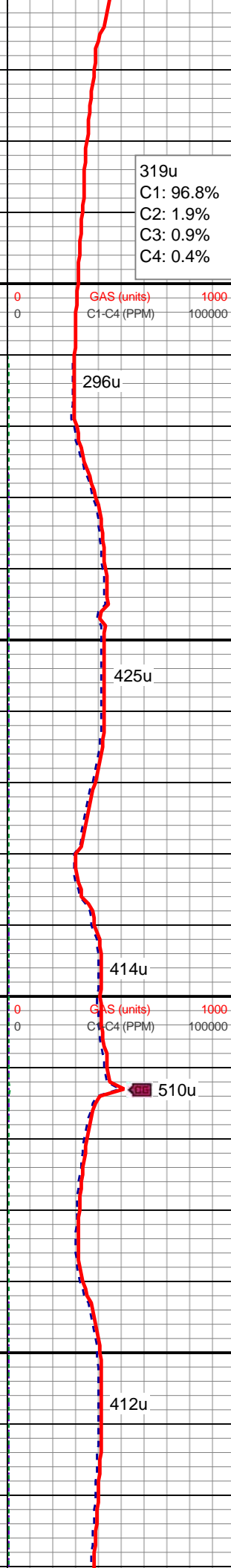
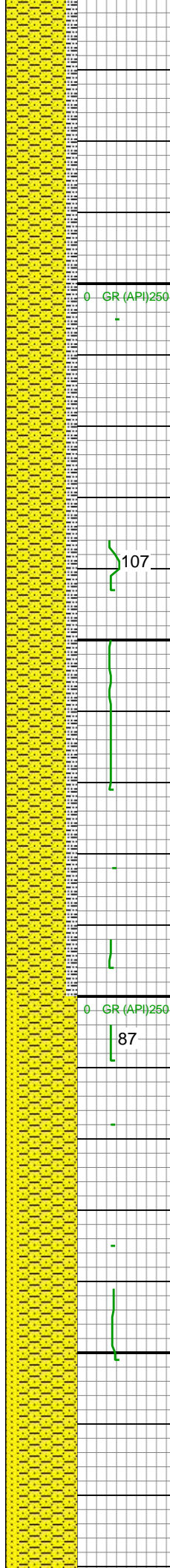
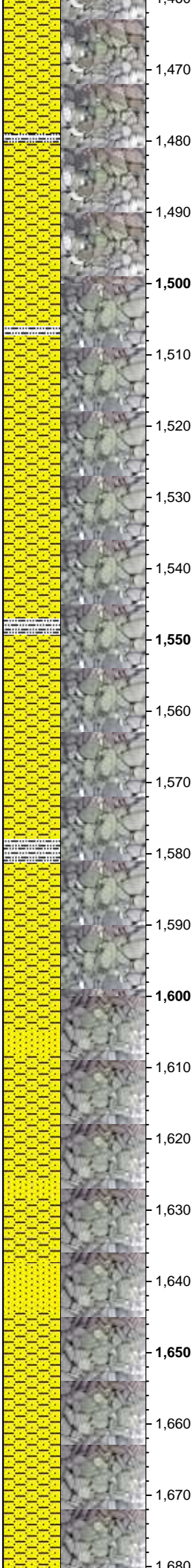
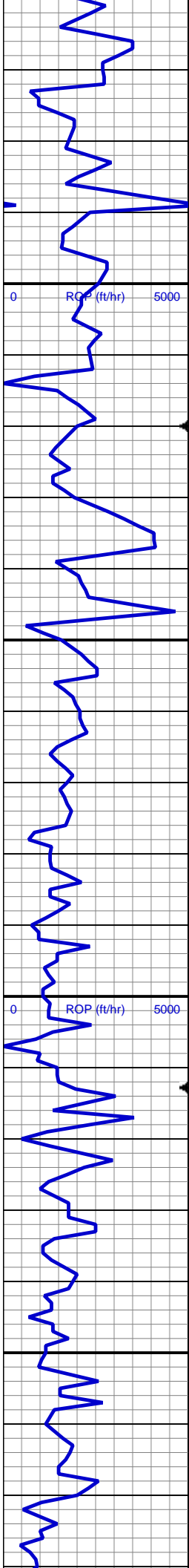




SHY SS: ltgy-gy, sb ang, v sft, v f gr, w
rnd, mod srt, p por, arg cmt

MD: 1,088'
TVD: 1,087.98'
Inclination: 0.07 °
Azimuth: 79.85 °
VS: -1.61'

SHY SS: ltgy-gy, sb ang, v sft, v f gr, w
rnd, mod srt, p por, arg cmt; intbd wi occ
SS: ltgy-wh-op, sb ang, v fri, f gr - v f gr,
mod rnd, p srt, p por, arg cmt, occ glau,
tr lith frag, wi sl tr SLTY SH

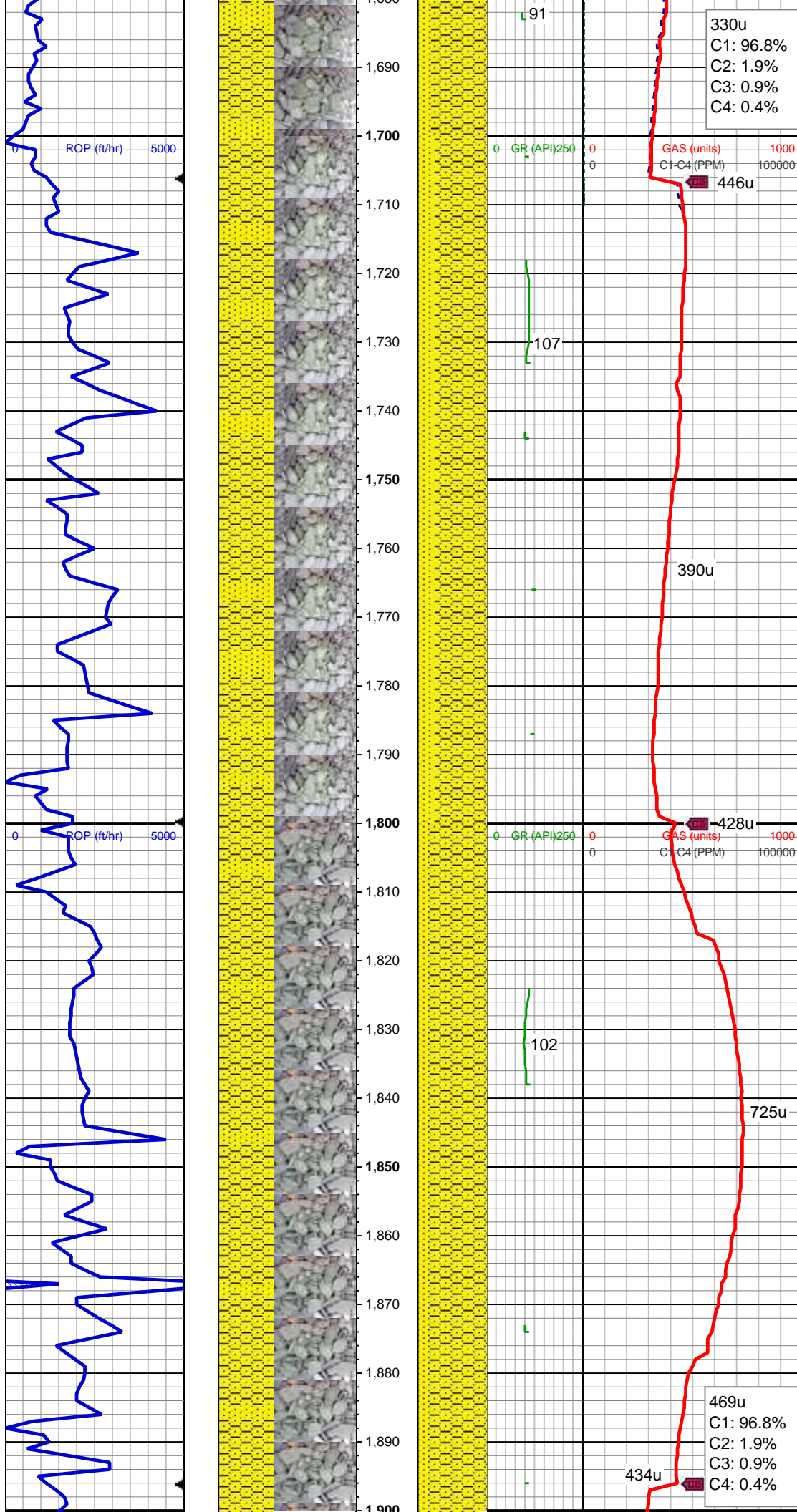


SHY SS: ltgy-gy, S&P ip, sb ang, v sft, v f gr, w rnd, mod-w srt, p por, arg cmt;
SLTY SH: gy-dk gy, sb blkgy-sb plty, v sft, slty tex, arg cmt

MD: 1,553'
TVD: 1,552.98'
Inclination: 0.39 °
Azimuth: 95.77 °
VS: -1.65'

MD: 1,646'
TVD: 1,645.98'
Inclination: 0.37 °
Azimuth: 74.62 °
VS: -1.6'

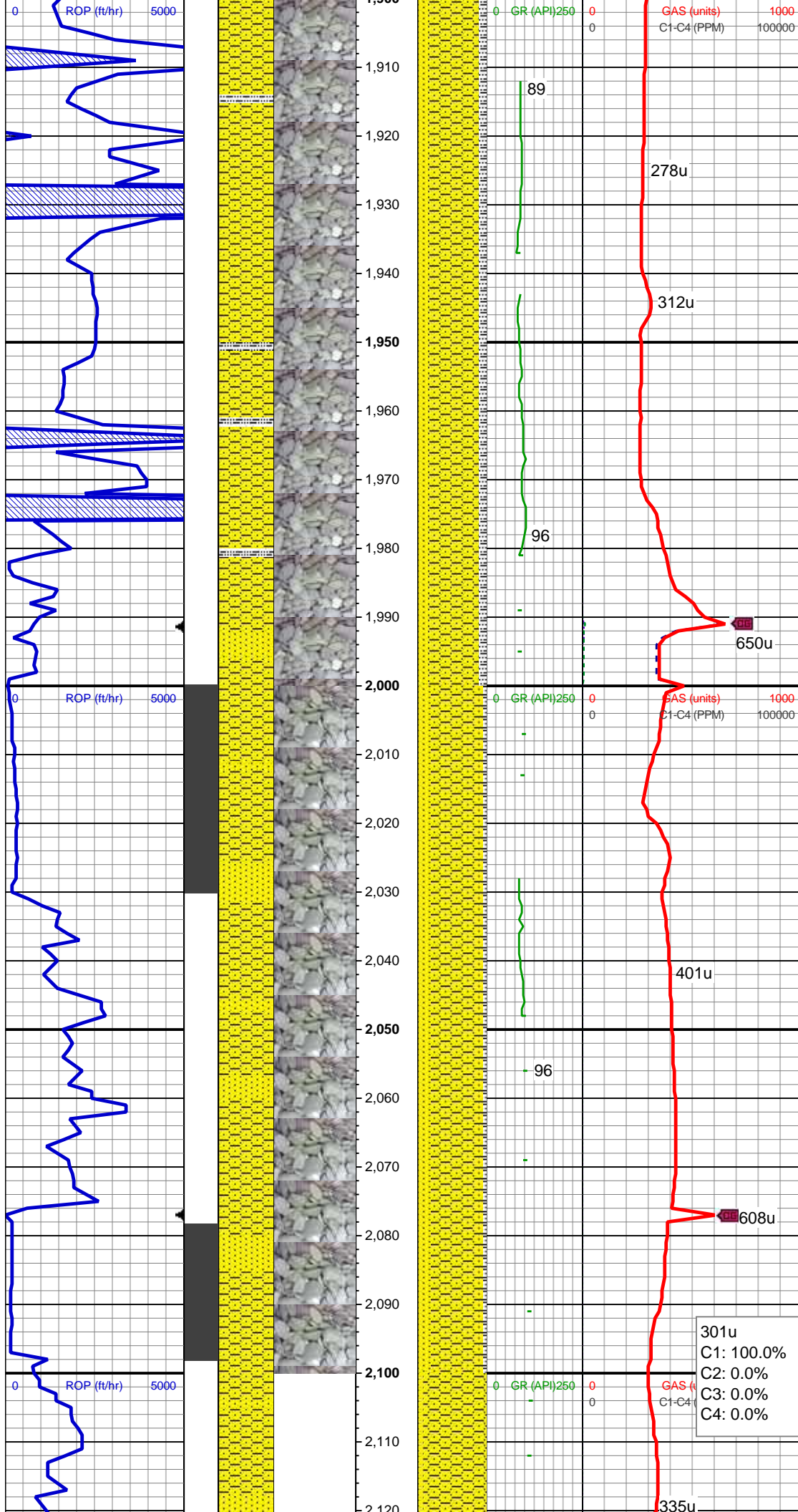
SHY SS: ltgy-gy, sb ang, v sft, v f gr, w rnd, mod srt, p por, arg cmt; intbd wi occ
SS: ltgy-wh-op, sb ang, v fri, f gr - v f gr, mod rnd, p srt, p por, arg cmt, occ glau, tr lith frag



MD: 1,737'
TVD: 1,736.98'
Inclination: 0.07 °
Azimuth: 33.47 °
VS: -1.47'

SHY SS: ltgy-gy, sb ang, v sft, v f gr, w
rnd, mod srt, p por, arg cmt; intbd wi occ
SS: ltgy-wh-op, sb ang, v fri, f gr - v f gr,
mod rnd, p srt, p por, arg cmt, occ glau,
tr lith frag

SHY SS: ltgy-gy, sb ang, v sft, v f gr, w
rnd, mod srt, p por, arg cmt; intbd wi occ
SS: ltgy-wh-op, sb ang, v fri, f gr - v f gr,
mod rnd, p srt, p por, arg cmt, occ glau,
tr lith frag



MD: 1,927'
TVD: 1,926.98'
Inclination: 0.18 °
Azimuth: 190.18 °
VS: -1.67'

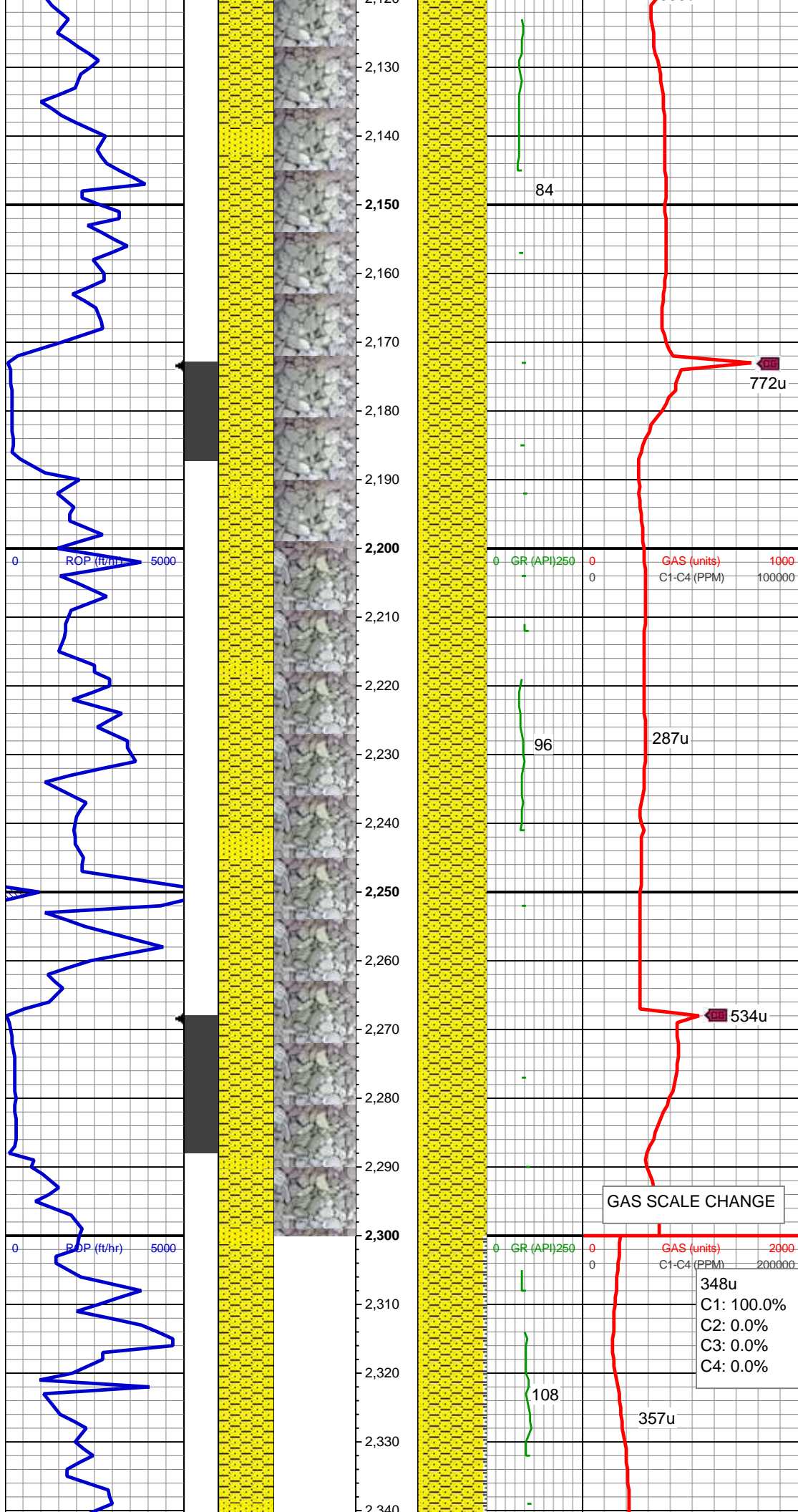
SHY SS: ltgy-gy, sb ang, v sft, v f gr, w
rnd, mod srt, p por, arg cmt; intbd wi occ
SS: ltgy-wh-op, sb ang, v fri, f gr - v f gr,
mod rnd, p srt, p por, arg cmt, occ glau,
tr lith frag, wi tr slty sh

MD: 2,022'
TVD: 2,021.96'
Inclination: 2.14 °
Azimuth: 253.28 °
VS: -1.94'

SHY SS: ltgy-gy, sb ang, v sft, v f gr, w
rnd, mod srt, p por, arg cmt; intbd wi occ
SS: ltgy-wh-op, sb ang, v fri, f gr - v f gr,
mod rnd, p srt, p por, arg cmt, occ glau,
tr lith frag, wi tr slty sh

301u
C1: 100.0%
C2: 0.0%
C3: 0.0%
C4: 0.0%

MD: 2,117'
TVD: 2,116.82'
Inclination: 4 °



Azimuth: 243.53 °
VS: -3.55'

SHY SS: ltgy-gy, sb ang, v sft, v f gr, w
rnd, mod srt, p por, arg cmt; intbd wi occ
SS: ltgy-wh-op, sb ang, v fri, f gr - v f gr,
mod rnd, p srt, p por, arg cmt, occ glau,
tr lith frag, wi tr slty sh

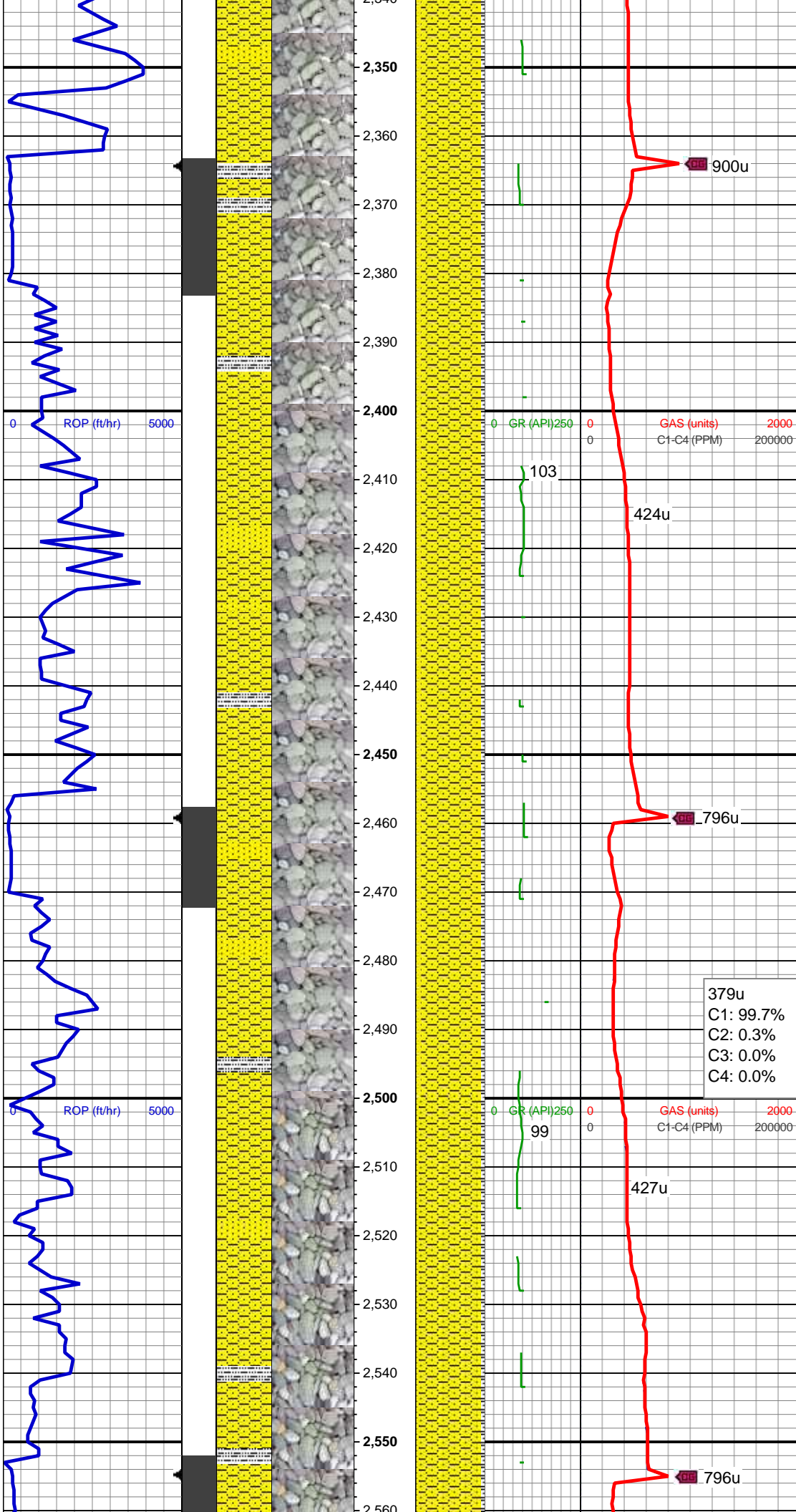
MD: 2,212'
TVD: 2,211.55'
Inclination: 4.6 °
Azimuth: 239.75 °
VS: -6.44'

SHY SS: ltgy-gy, sb ang, v sft, v f gr, w
rnd, mod srt, p por, arg cmt; intbd wi occ
SS: ltgy-wh-op, sb ang, v fri, f gr - v f gr,
mod rnd, p srt, p por, arg cmt, occ glau,
tr lith frag, wi tr slty sh

MD: 2,307'
TVD: 2,306.14'
Inclination: 5.98 °
Azimuth: 241.37 °
VS: -10.11'

GAS SCALE CHANGE

348u
C1: 100.0%
C2: 0.0%
C3: 0.0%
C4: 0.0%



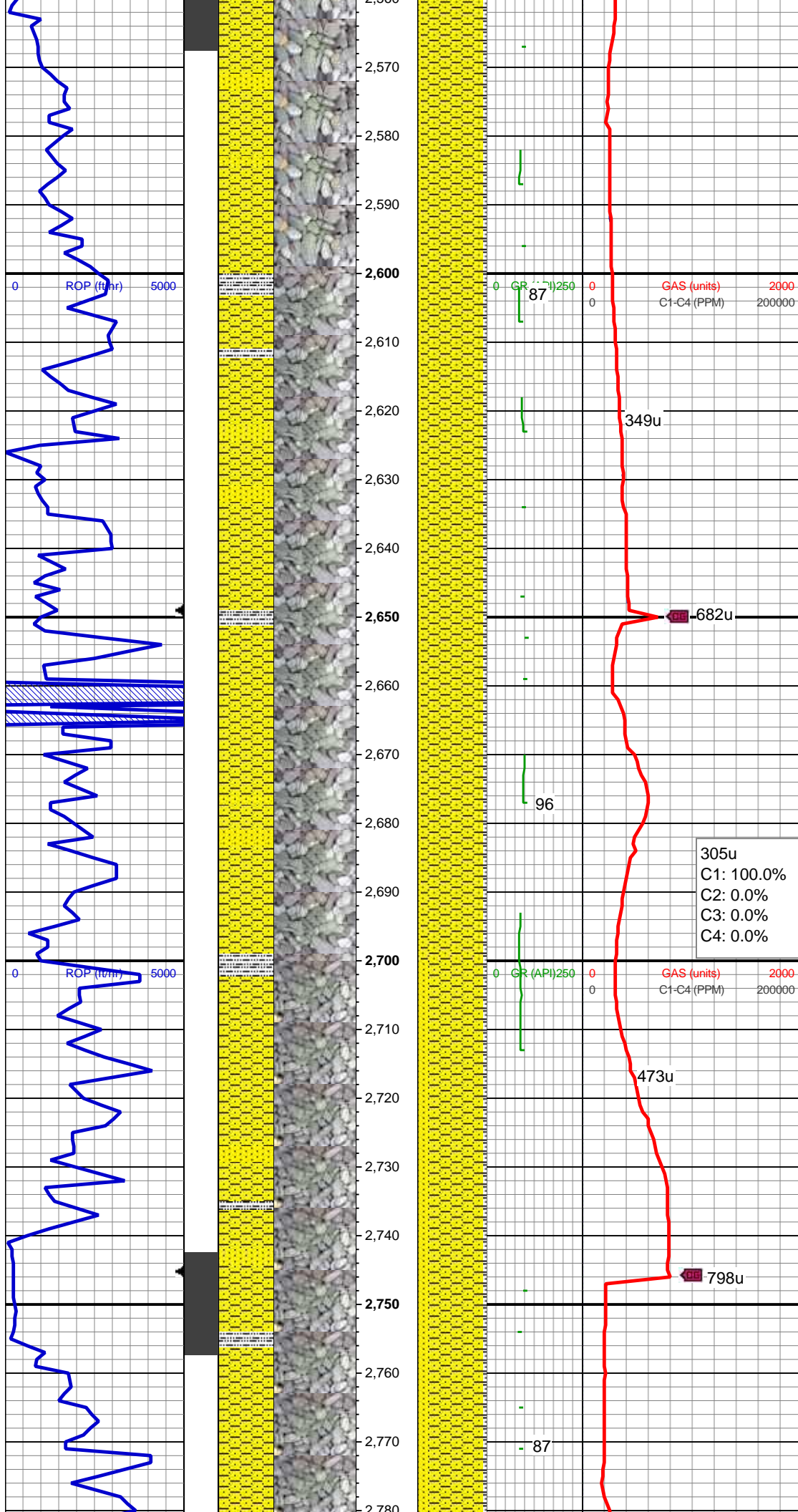
SHY SS: ltgy-gy, sb ang, v sft, v f gr, w
rnd, mod srt, p por, arg cmt; intbd wi occ
SS: ltgy-wh-op, sb ang, v fri, f gr - v f gr,
mod rnd, p srt, p por, arg cmt, occ glau,
tr lith frag
SLTY SH: gy-dk gy, sb blk-y-sb plty, v sft,
sfty tex, arg cmt

MD: 2,401'
TVD: 2,399.56'
Inclination: 6.78 °
Azimuth: 235.17 °
VS: -14.91'

SHY SS: ltgy-gy, sb ang, v sft, v f gr, w
rnd, mod srt, p por, arg cmt; intbd wi occ
SS: ltgy-wh-op, sb ang, v fri, f gr - v f gr,
mod rnd, p srt, p por, arg cmt, occ glau,
tr lith frag
SLTY SH: gy-dk gy, sb blk-y-sb plty, v sft,
sfty tex, arg cmt

MD: 2,496'
TVD: 2,493.83'
Inclination: 7.47 °
Azimuth: 235.07 °
VS: -20.86'

SHY SS: ltgy-gy, sb ang, v sft, v f gr, w
rnd, mod srt, p por, arg cmt; intbd wi occ
SS: ltgy-wh-op, sb ang, v fri, f gr - v f gr,
mod rnd, p srt, p por, arg cmt, occ glau,
tr lith frag
SLTY SH: gy-dk gy, sb blk-y-sb plty, v sft,
sfty tex, arg cmt



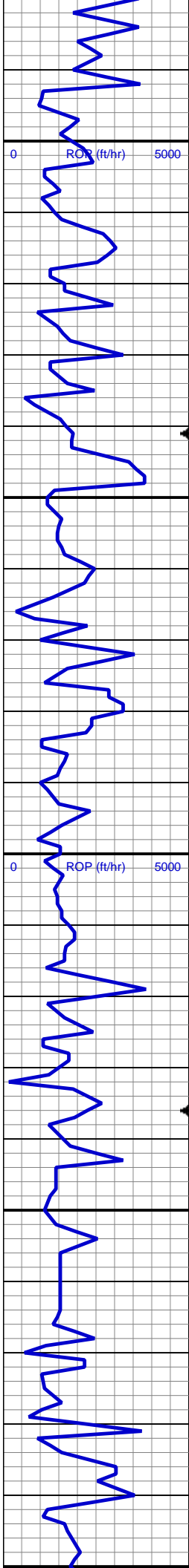
MD: 2,591'
TVD: 2,587.95'
Inclination: 8.11 °
Azimuth: 236.06 °
VS: -27.28'

SHY SS: ltgy-gy, sb ang, v sft, v f gr, w
rnd, mod srt, p por, arg cmt; intbd wi occ
SS: ltgy-wh-op, sb ang, v fri, f gr - v f gr,
mod rnd, p srt, p por, arg cmt, occ glau,
tr lith frag
SLTY SH: gy-dk gy, sb blk-y-sb plty, v sft,
sly tex, arg cmt

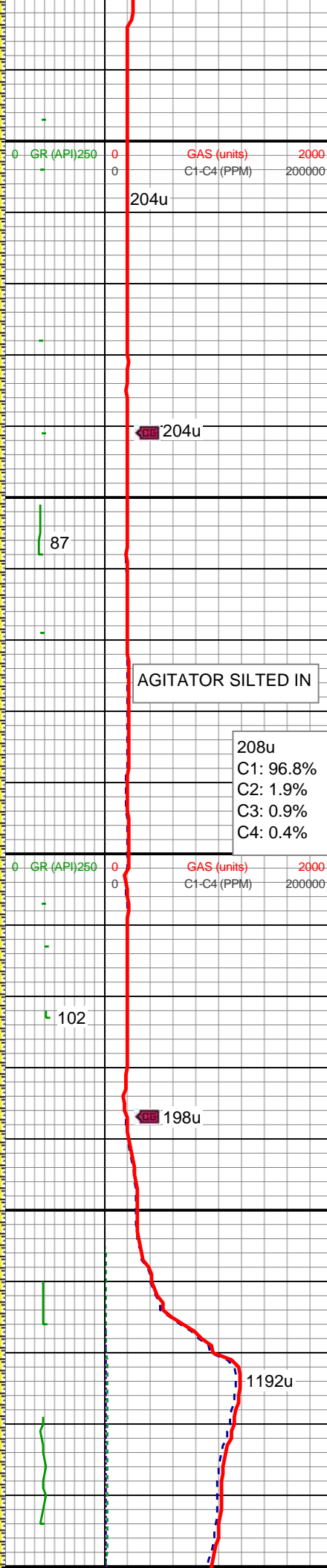
MD: 2,686'
TVD: 2,682.03'
Inclination: 7.88 °
Azimuth: 235.43 °
VS: -33.83'

SHY SS: ltgy-gy, sb ang, v sft, v f gr, w
rnd, mod srt, p por, arg cmt; intbd wi occ
SS: ltgy-wh-op, sb ang, v fri, f gr - v f gr,
mod rnd, p srt, p por, arg cmt, occ glau,
tr lith frag
SLTY SH: gy-dk gy, sb blk-y-sb plty, v sft,
sly tex, arg cmt

MD: 2,781'
TVD: 2,776.04'



2,780
2,790
2,800
2,810
2,820
2,830
2,840
2,850
2,860
2,870
2,880
2,890
2,900
2,910
2,920
2,930
2,940
2,950
2,960
2,970
2,980
2,990
3,000



Inclination: 8.61 °
Azimuth: 233.94 °
VS: -40.81'

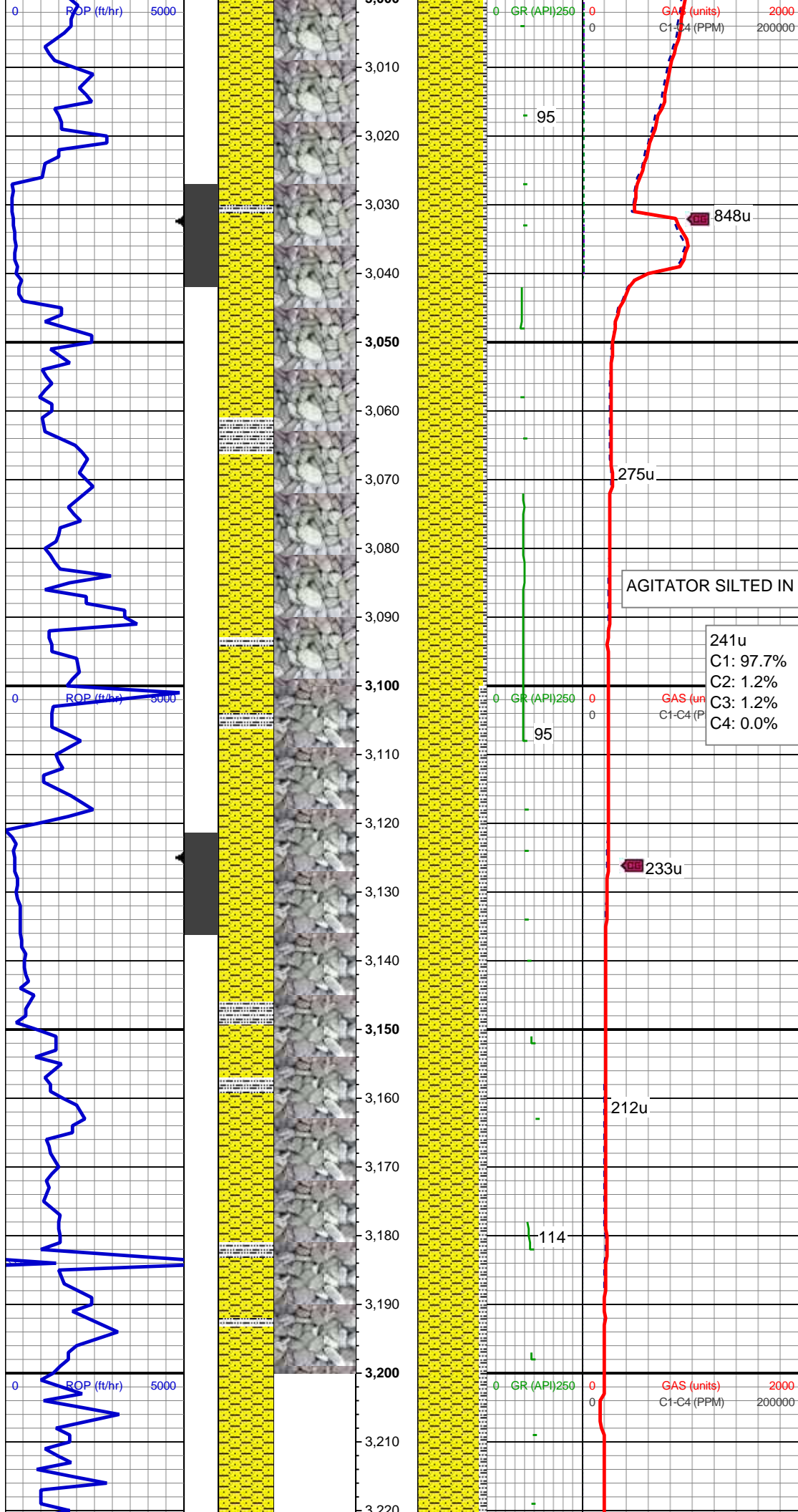
SHY SS: ltgy-gy, sb ang, v sft, v f gr, w
rnd, mod srt, p por, arg cmt; intbd wi occ
SS: ltgy-wh-op, sb ang, v fri, f gr - v f gr,
mod rnd, p srt, p por, arg cmt, occ glau,
tr lith frag
SLTY SH: gy-dk gy, sb blkgy-sb plty, v sft,
silty tex, arg cmt

MD: 2,876'
TVD: 2,870.02'
Inclination: 8.23 °
Azimuth: 231.51 °
VS: -48.32'

208u
C1: 96.8%
C2: 1.9%
C3: 0.9%
C4: 0.4%

SHY SS: ltgy-gy, sb ang, v sft, v f gr, w
rnd, mod srt, p por, arg cmt; intbd wi occ
SLTY SH: gy-dk gy, sb blkgy-sb plty, v sft,
silty tex, arg cmt

MD: 2,971'
TVD: 2,964.13'
Inclination: 7.44 °
Azimuth: 231.06 °
VS: -55.6'



SHY SS: ltgy-gy, sb ang, v sft, v f gr, w
rnd, mod srt, p por, arg cmt; intbd wi occ
SLTY SH: gy-dk gy, sb blkgy-sb plty, v sft,
silty tex, arg cmt

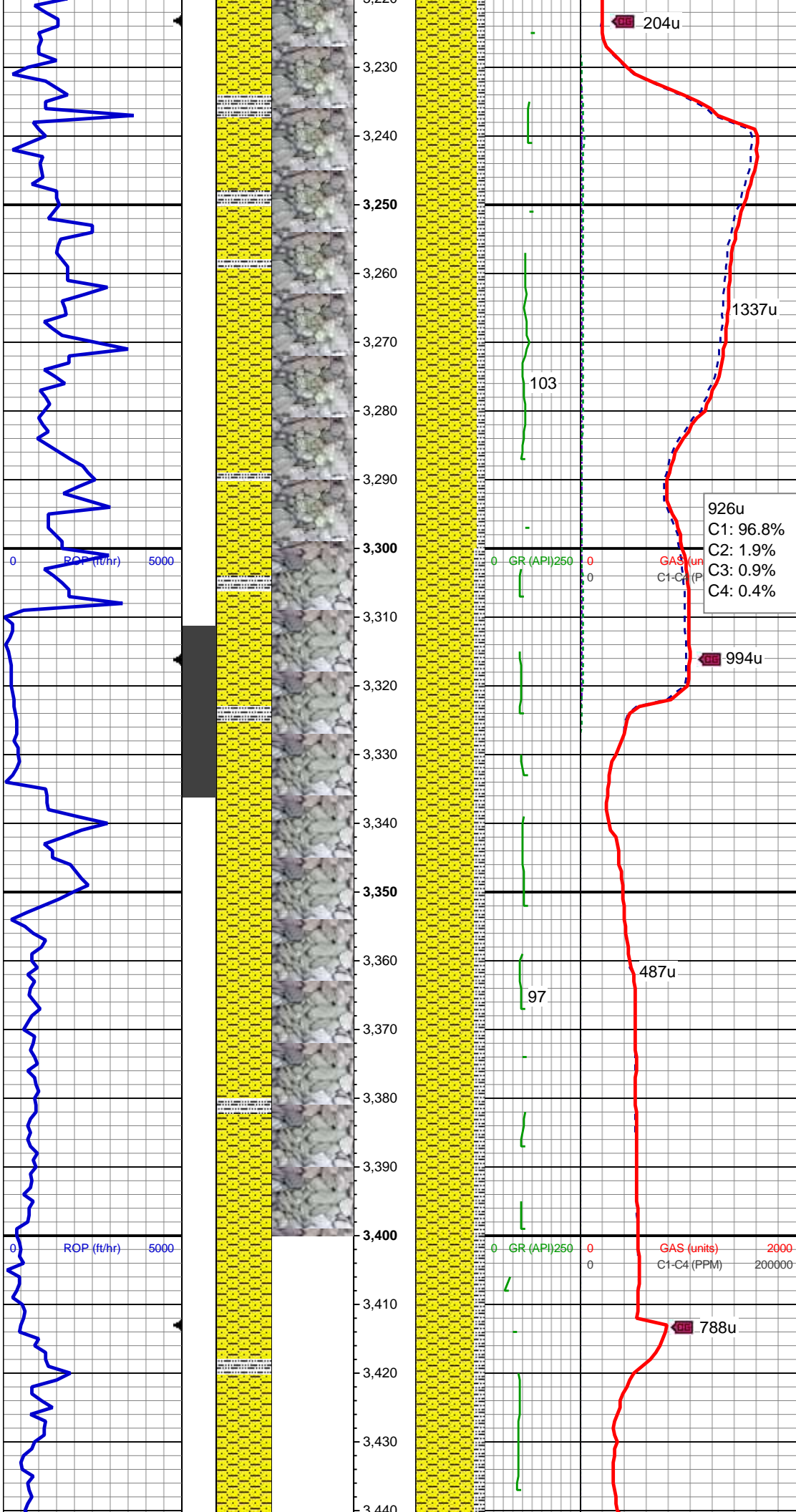
MD: 3,065'
TVD: 3,057.32'
Inclination: 7.69 °
Azimuth: 236.06 °
VS: -62.12'

AGITATOR SILTED IN

241u
C1: 97.7%
C2: 1.2%
C3: 1.2%
C4: 0.0%

SHY SS: ltgy-gy, sb ang, v sft, v f gr, w
rnd, mod srt, p por, arg cmt; intbd wi occ
SLTY SH: gy-dk gy, sb blkgy-sb plty, v sft,
silty tex, arg cmt, rr pyr

MD: 3,160'
TVD: 3,151.42'
Inclination: 8.13 °
Azimuth: 246.44 °
VS: -67.44'



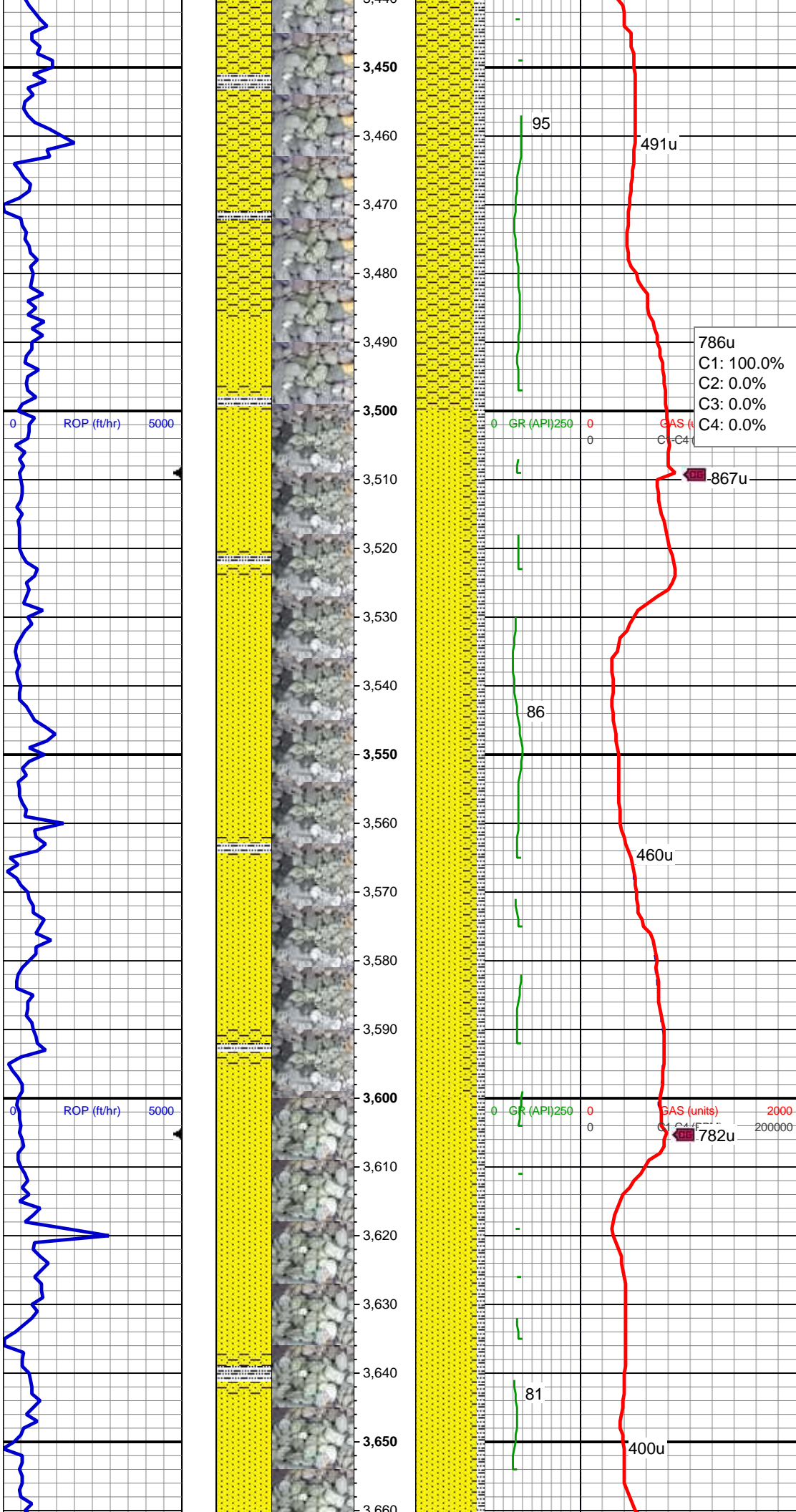
SHY SS: ltgy-gy, sb ang, v sft, v f gr, w
rnd, mod srt, p por, arg cmt; intbd wi occ
SLTY SH: gy-dk gy, sb blkly-sb plty, v
sft-sft, slty tex, arg cmt, rr pyr

MD: 3,255'
TVD: 3,245.6'
Inclination: 6.85 °
Azimuth: 241.63 °
VS: -71.92'

MD: 3,350'
TVD: 3,339.81'
Inclination: 8 °
Azimuth: 233.6 °
VS: -77.7'

SHY SS: ltgy-gy, sb ang, v sft, v f gr, w
rnd, mod srt, p por, arg cmt; intbd wi occ
SLTY SH: gy-dk gy, sb blkly-sb plty, v
sft-sft, slty tex, arg cmt, rr pyr

MD: 3,445'
TVD: 3,433.89'
Inclination: 7.9 °
Azimuth: 233.9 °
VS: -84.61'



VS: -04.01'

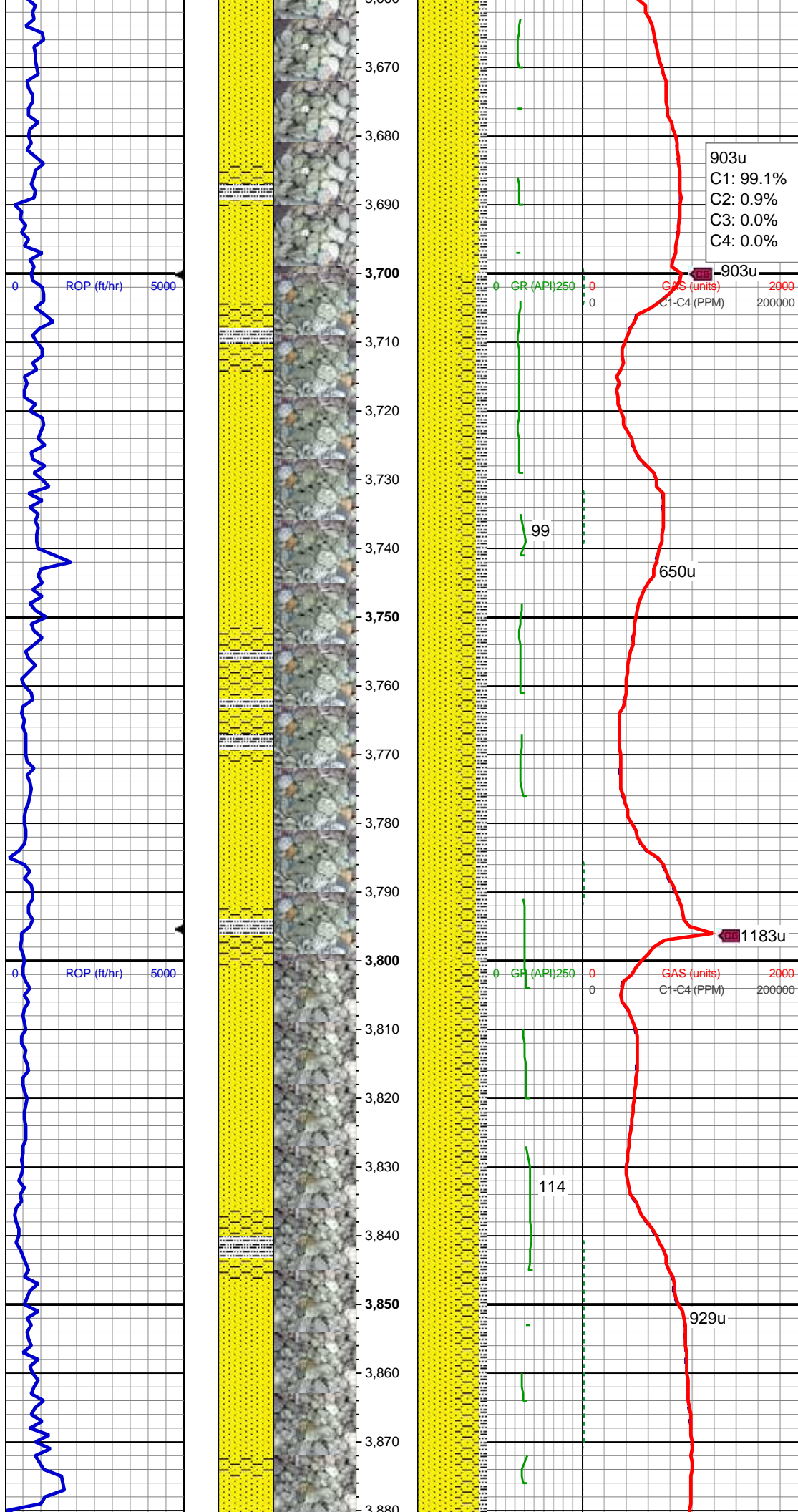
SHY SS: ltgy-gy, sb ang, v sft, v f gr, w
rnd, mod srt, p por, arg cmt; intbd wi occ
SLTY SH: gy-dk gy, sb blkly-sb plty, v
sft-sft, slty tex, arg cmt, rr pyr

MD: 3,540'
TVD: 3,528'
Inclination: 7.82 °
Azimuth: 234.99 °
VS: -91.31'

SS: ltgy-wh-op, sb ang, v fri, f gr - v f gr,
mod rnd, p srt, p por, arg cmt, occ glau,
tr lith frag
SHY SS: ltgy-gy, sb ang, v sft, v f gr, w
rnd, mod srt, p por, arg cmt; intbd wi occ
SLTY SH: gy-dk gy, sb blkly-sb plty, v sft,
slty tex, arg cmt

MD: 3,635'
TVD: 3,622.15'
Inclination: 7.56 °
Azimuth: 234.05 °
VS: -97.85'

SS: ltgy-wh-op, sb ang, v fri, f gr - v f gr,
mod rnd, p srt, p por, arg cmt, occ glau,
tr lith frag
SHY SS: ltgy-gy, sb ang, v sft, v f gr, w
rnd, mod srt, p por, arg cmt; intbd wi occ
SLTY SH: gy-dk gy, sb blkly-sb plty, v sft,
slty tex, arg cmt



903u
C1: 99.1%
C2: 0.9%
C3: 0.0%
C4: 0.0%

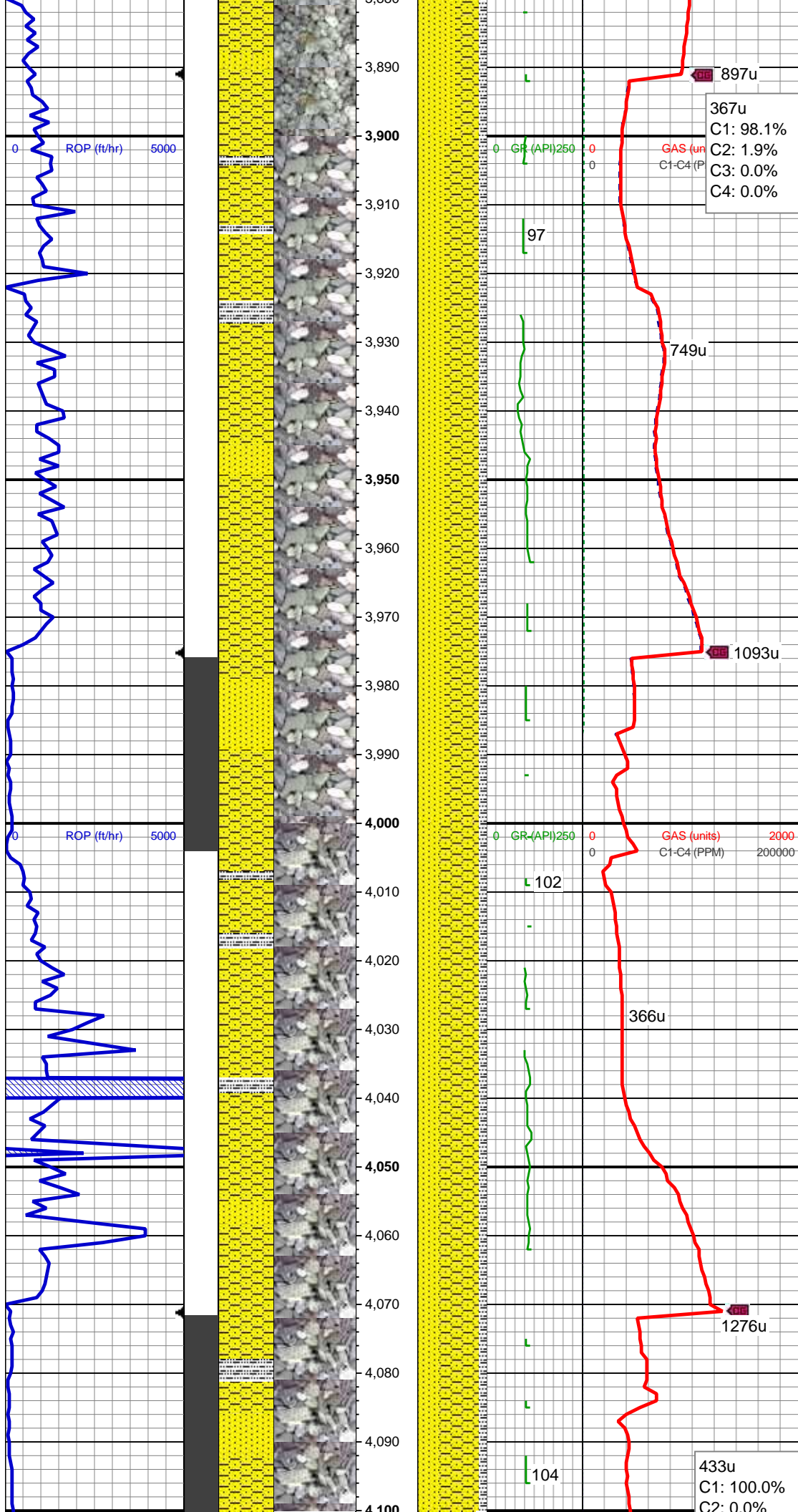
GR (API) 250 0
GAS (units) 2000
C1-C4 (PPM) 200000

MD: 3,730'
TVD: 3,716.34'
Inclination: 7.43 °
Azimuth: 233.87 °
VS: -104.32'

SS: ltgy-wh-op, sb ang, v fri, f gr - v f gr, mod rnd, p srt, p por, arg cmt, occ glau, tr lith frag
SHY SS: ltgy-gy, sb ang, v sft, v f gr, w rnd, mod srt, p por, arg cmt; intbd wi occ
SLTY SH: gy-dk gy, sb blkgy-sb plty, v sft, slty tex, arg cmt

MD: 3,825'
TVD: 3,810.55'
Inclination: 7.29 °
Azimuth: 233.53 °
VS: -110.73'

SS: ltgy-wh-op, sb ang, v fri, f gr - v f gr, mod rnd, p srt, p por, arg cmt, occ glau, tr lith frag
SHY SS: ltgy-gy, sb ang, v sft, v f gr, w rnd, mod srt, p por, arg cmt; intbd wi occ
SLTY SH: gy-dk gy, sb blkgy-sb plty, v sft, slty tex, arg cmt



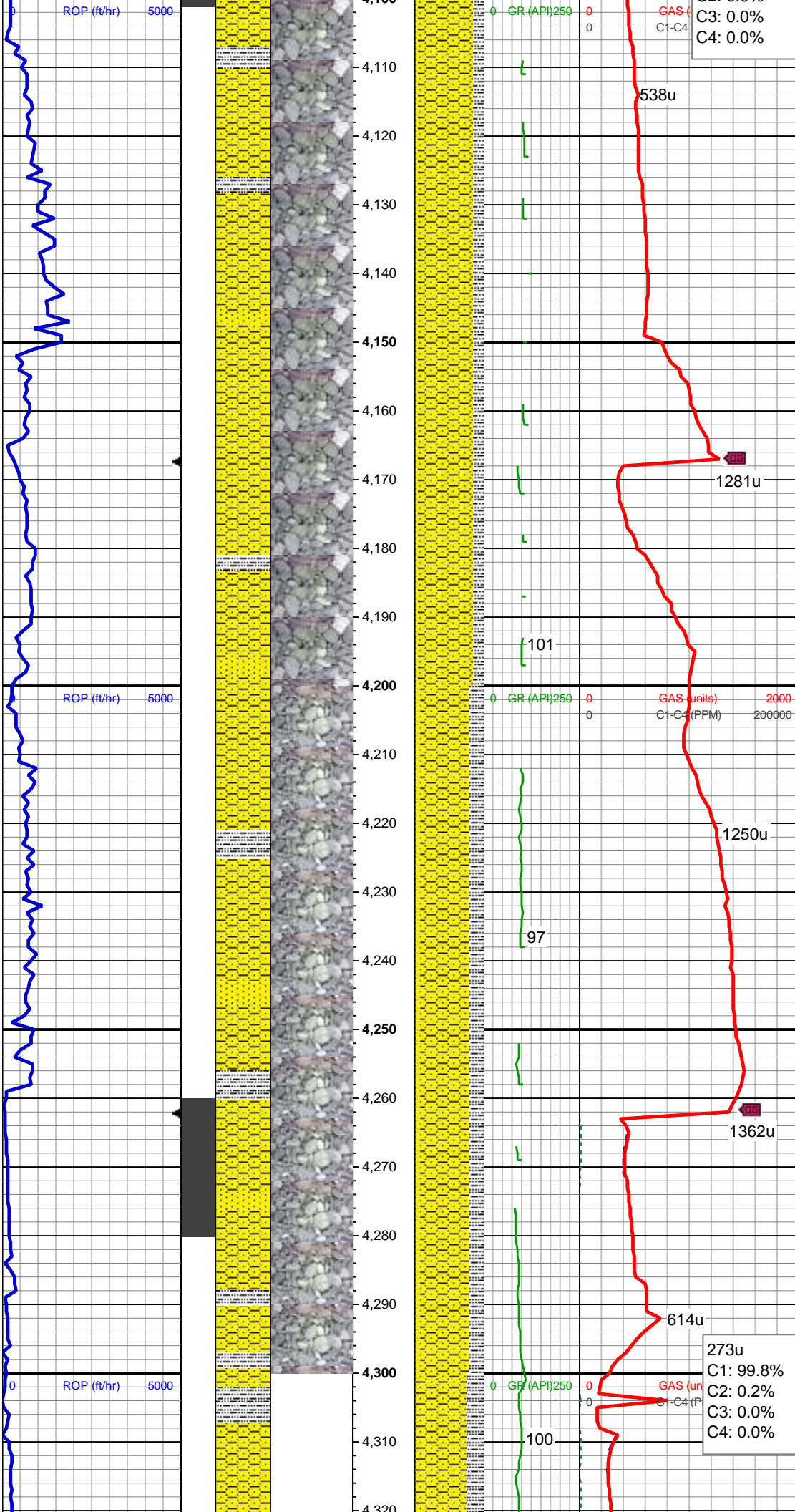
MD: 3,920'
TVD: 3,904.83'
Inclination: 6.83 °
Azimuth: 231.7 °
VS: -117.06'

SHY SS: ltgy-gy, sb ang, v sft, v f gr, w
rnd, mod srt, p por, arg cmt; intbd wi occ
SS: ltgy-wh-op, sb ang, v fri, f gr - v f gr,
mod rnd, p srt, p por, arg cmt, occ glau,
tr lith frag
SLTY SH: gy-dk gy, sb blk-y-sb plty, v sft,
sly tex, arg cmt

MD: 4,015'
TVD: 3,999.13'
Inclination: 7.1 °
Azimuth: 238.04 °
VS: -122.9'

SHY SS: ltgy-gy, sb ang, v sft, v f gr, w
rnd, mod srt, p por, arg cmt; intbd wi occ
SS: ltgy-wh-op, sb ang, v fri, f gr - v f gr,
mod rnd, p srt, p por, arg cmt, occ glau,
tr lith frag
SLTY SH: gy-dk gy, sb blk-y-sb plty, v sft,
sly tex, arg cmt

433u
C1: 100.0%
C2: 0.0%



MD: 4,109'
TVD: 4,092.27'
Inclination: 8.38 °
Azimuth: 236.42 °
VS: -128.9'

SHY SS: ltgy-gy, sb ang, v sft, v f gr, w
rnd, mod srt, p por, arg cmt; intbd wi occ
SLTY SH: gy-dk gy, sb blkgy-sb plty, v sft,
sly tex, arg cmt
SS: ltgy-wh-op, sb ang, v fri, f gr - v f gr,
mod rnd, p srt, p por, arg cmt, occ glau,
tr lith frag, rr pyr

MD: 4,204'
TVD: 4,186.42'
Inclination: 7.03 °
Azimuth: 234.25 °
VS: -135.28'

SHY SS: ltgy-gy, sb ang, v sft, v f gr, w
rnd, mod srt, p por, arg cmt; intbd wi occ
SLTY SH: gy-dk gy, sb blkgy-sb plty, v sft,
sly tex, arg cmt
SS: ltgy-wh-op, sb ang, v fri, f gr - v f gr,
mod rnd, p srt, p por, arg cmt, occ glau,
tr lith frag, rr pyr

MD: 4,293'
TVD: 4,274.71'
Inclination: 7.41 °
Azimuth: 237.38 °
VS: -160.46'

BHA BIT: #3
CMITH 2 75L MND55M

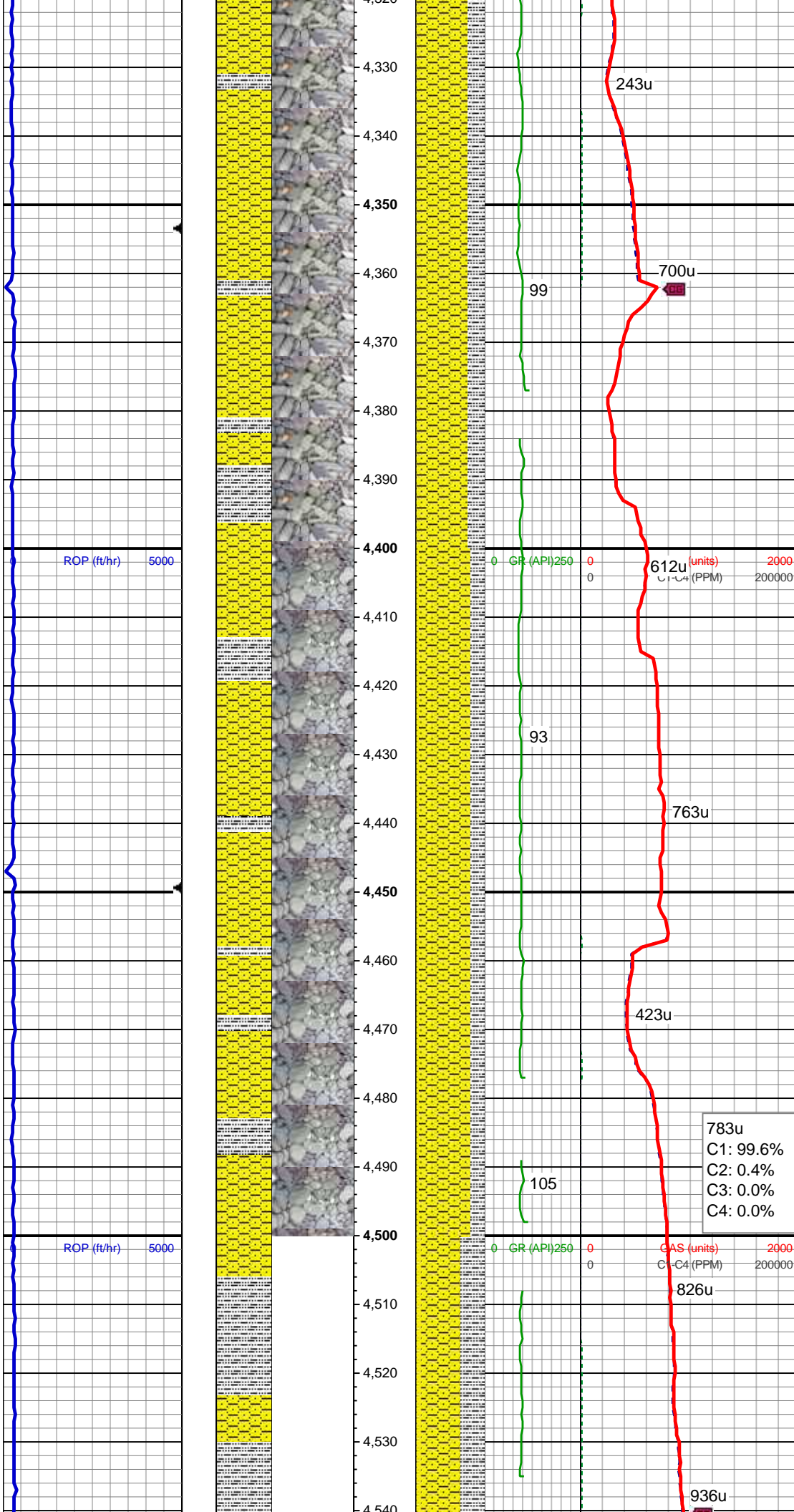
SMITH 8.75" MMD55M
Serial #: 12443970
Jets: 5X15

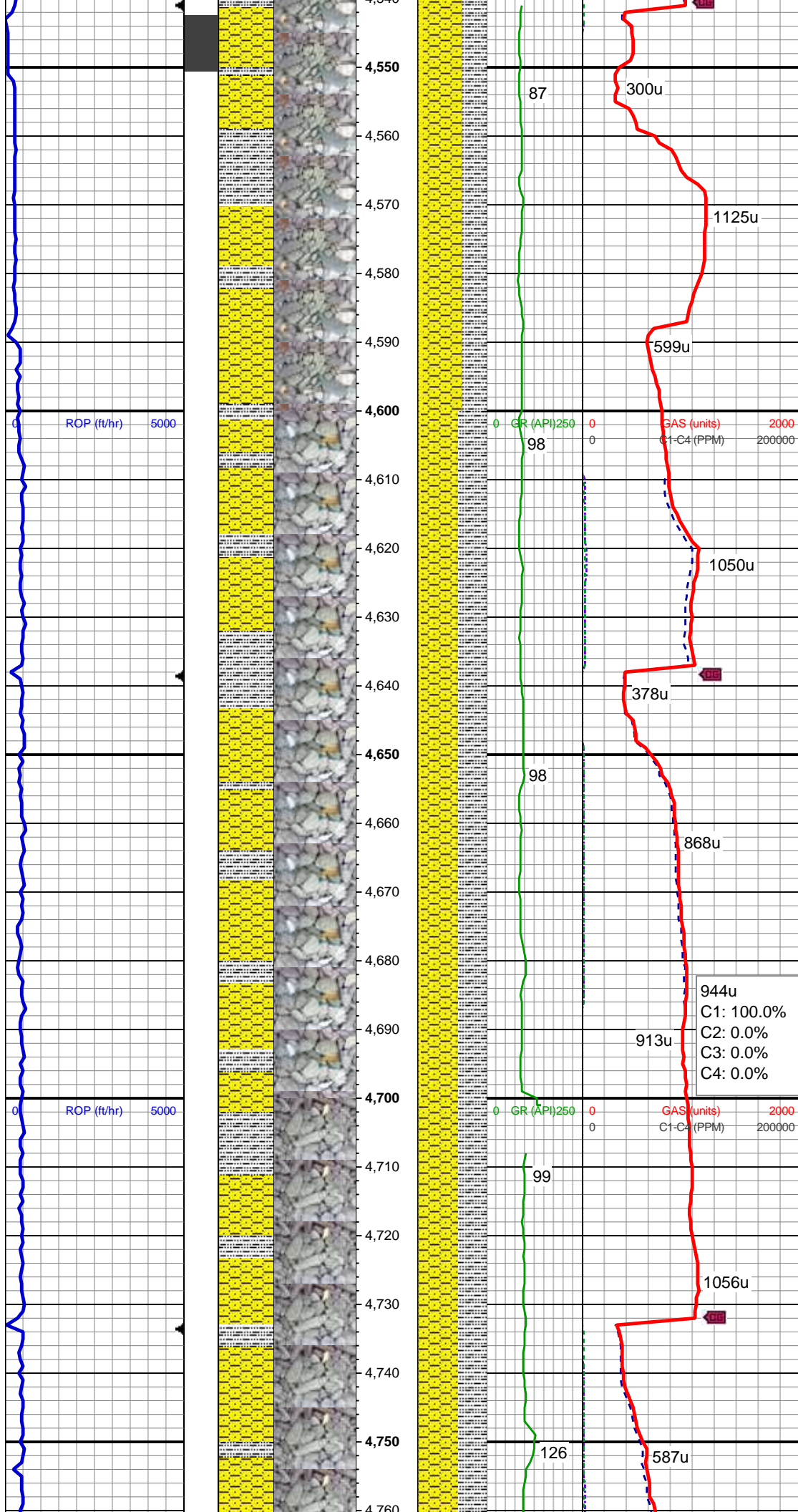
SHY SS: ltgy-gy, sb ang, v sft, v f gr, w
rnd, mod srt, p por, arg cmt; intbd wi occ
SLTY SH: gy-dk gy, sb blkly-sb plty, v sft,
sly tex, arg cmt
SS: ltgy-wh-op, sb ang, v fri, f gr - v f gr,
mod rnd, p srt, p por, arg cmt, occ glau,
tr lith frag, rr pyr

MD: 4,388'
TVD: 4,368.91'
Inclination: 7.45 °
Azimuth: 233.65 °
VS: -167.42'

SHY SS: ltgy-gy, sb ang, v sft, v f gr, w
rnd, mod srt, p por, arg cmt; intbd wi occ
SLTY SH: gy-dk gy, sb blkly-sb plty, v sft,
sly tex, arg cmt
SS: ltgy-wh-op, sb ang, v fri, f gr - v f gr,
mod rnd, p srt, p por, arg cmt, occ glau,
tr lith frag, rr pyr

MD: 4,483'
TVD: 4,463.16'
Inclination: 6.99 °
Azimuth: 230.41 °
VS: -174.75'





SHY SS: ltgy-gy, sb ang, v sft, v f gr, w
rnd, mod srt, p por, arg cmt; intbd wi occ
SLTY SH: gy-dk gy, sb blkly-sb plty, v sft,
slyt tex, arg cmt
SS: ltgy-wh-op, sb ang, v fri, f gr - v f gr,
mod rnd, p srt, p por, arg cmt, occ glau,
tr lith frag, rr pyr

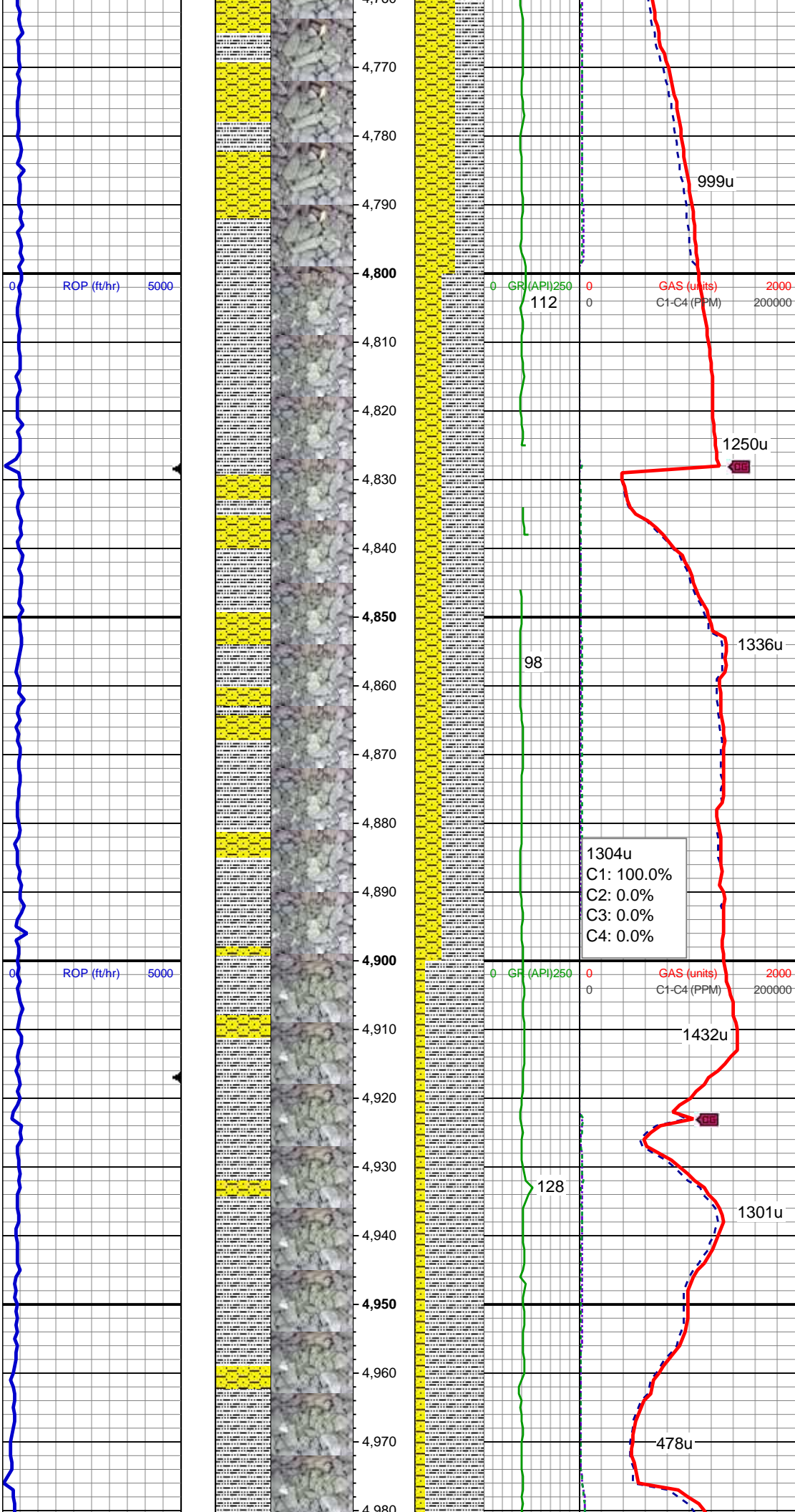
MD: 4,578'
TVD: 4,557.28'
Inclination: 8.58 °
Azimuth: 232.86 °
VS: -182.72'

SHY SS: ltgy-gy, sb ang, v sft, v f gr, w
rnd, mod srt, p por, arg cmt; intbd wi occ
SLTY SH: gy-dk gy, sb blkly-sb plty, v sft,
slyt tex, arg cmt
SS: ltgy-wh-op, sb ang, v fri, f gr - v f gr,
mod rnd, p srt, p por, arg cmt, occ glau,
tr lith frag, rr pyr

MD: 4,673'
TVD: 4,651.29'
Inclination: 8.01 °
Azimuth: 234.28 °
VS: -190.86'

SHY SS: ltgy-gy, sb ang, v sft, v f gr, w
rnd, mod srt, p por, arg cmt; intbd wi occ
SLTY SH: gy-dk gy, sb blkly-sb plty, v sft,
slyt tex, arg cmt, tr pyr

MD: 4,768'
TVD: 4,745.42'
Inclination: 7.44 °
Azimuth: 235.27 °
VS: -198.23'



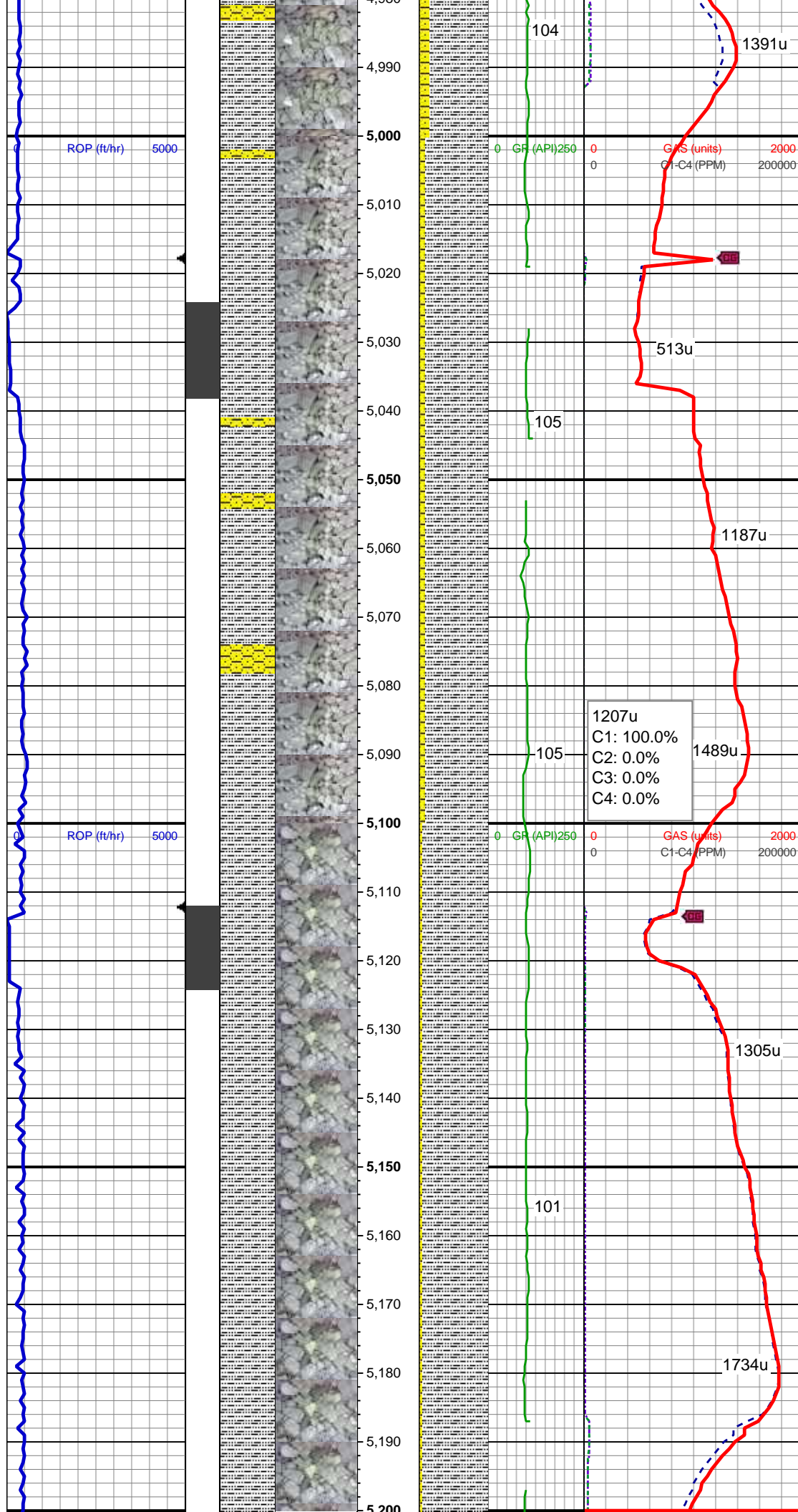
SHY SS: ltgy-gy, sb ang, v sft, v f gr, w
rnd, mod srt, p por, arg cmt; intbd wi occ
SLTY SH: gy-dk gy, sb blkly-sb plty, v sft,
sly tex, arg cmt, tr pyr

MD: 4,863'
TVD: 4,839.7'
Inclination: 6.7 °
Azimuth: 236.59 °
VS: -204.78'

1304u
C1: 100.0%
C2: 0.0%
C3: 0.0%
C4: 0.0%

SLTY SH: gy-dk gy, sb blkly-sb plty, v sft,
sly tex, arg cmt, tr pyr;
SHY SS: ltgy-gy, sb ang, v sft, v f gr, w
rnd, mod srt, p por, arg cmt

MD: 4,957'
TVD: 4,933.1'
Inclination: 6.24 °
Azimuth: 233.19 °
VS: -210.86'

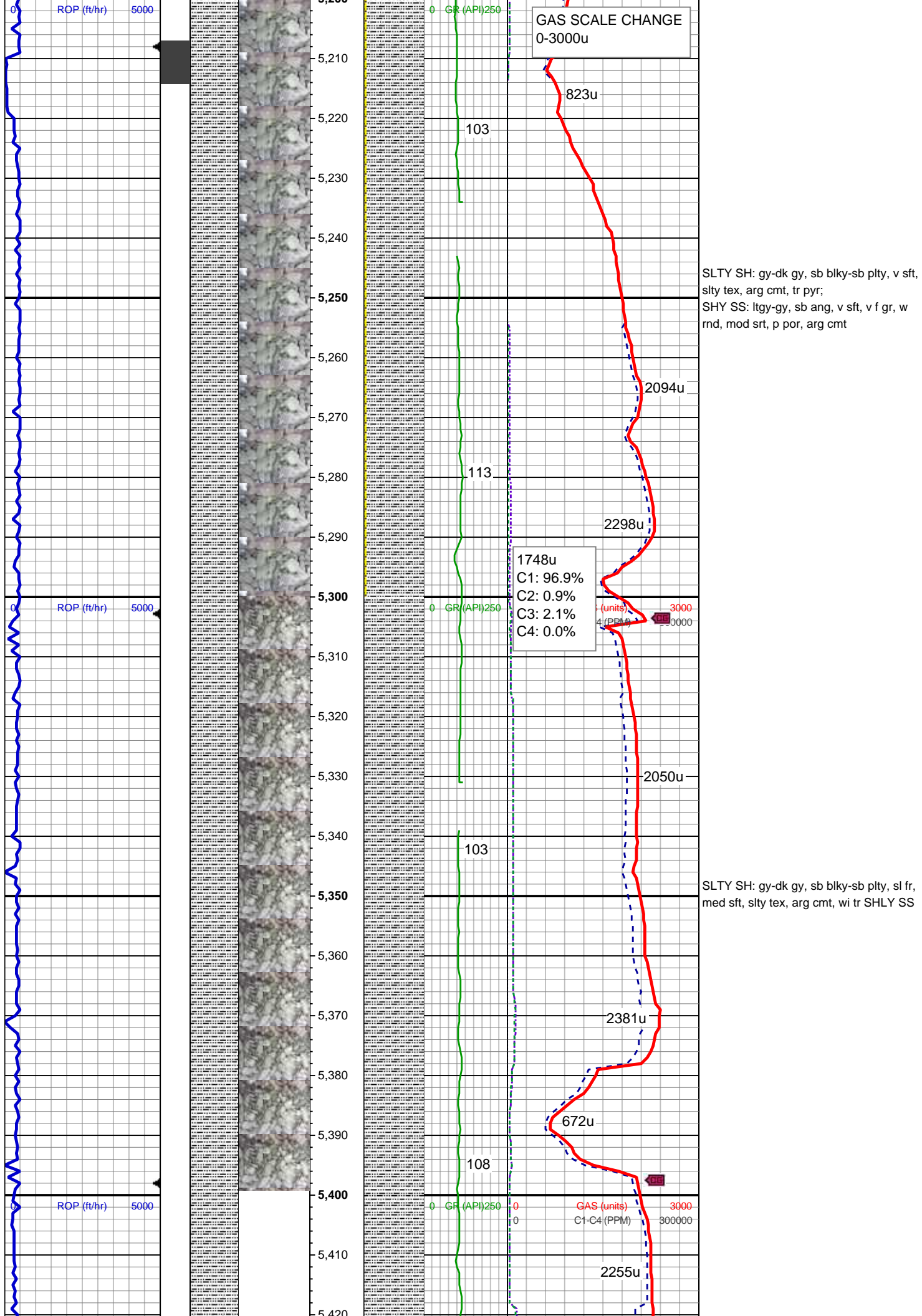


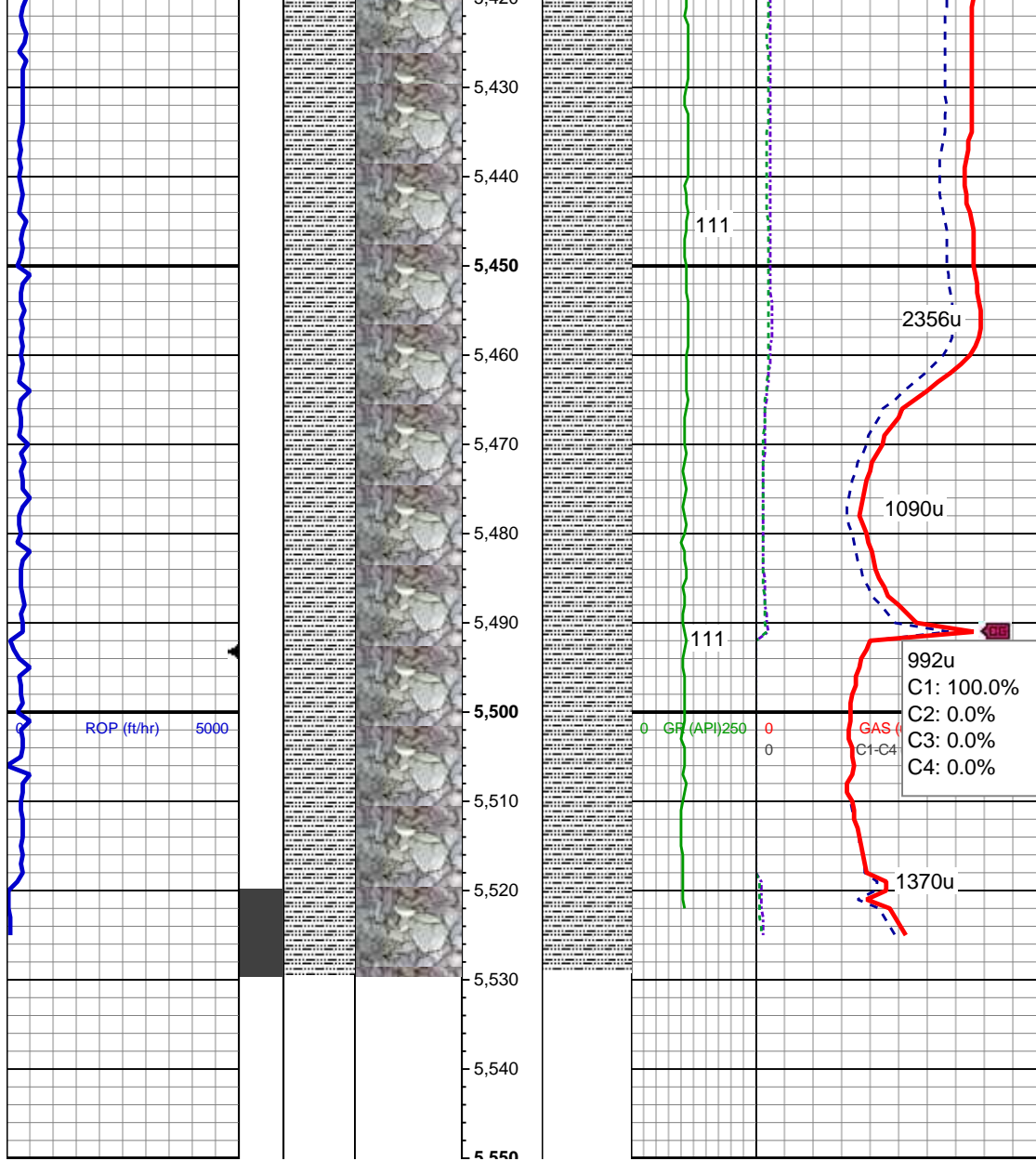
SLTY SH: gy-dk gy, sb blkly-sb plty, v sft,
slyt tex, arg cmt, tr pyr;
SHY SS: ltgy-gy, sb ang, v sft, v f gr, w
rnd, mod srt, p por, arg cmt

MD: 5,052'
TVD: 5,027.71'
Inclination: 4.03 °
Azimuth: 228.96 °
VS: -216.15'

SLTY SH: gy-dk gy, sb blkly-sb plty, v sft,
slyt tex, arg cmt, tr pyr;
SHY SS: ltgy-gy, sb ang, v sft, v f gr, w
rnd, mod srt, p por, arg cmt

WT IN 9.8/ OUT 10.0
VIS IN 33 OUT 35





SLTY SH: gy-dk gy, sb blkly-sb plty, sl fr,
med sft, slty tex, arg cmt, wi tr SHLY SS

WT IN 9.8/ OUT 10.0
VIS IN 33 OUT 35

SLTY SH: gy-dk gy, sb blkly-sb plty, sl fr,
med sft, slty tex, arg cmt

LOG CONTINUES ON MPLIT
BROOK LC28-75-1BHNC
HORZ

KOP @ 5529' MD
07/14/2014 @ 2:22 PM