

Company: Noble Energy Inc

Well: Brook LC28-75-1BHNC
Field: Wildcat
County: Weld State: Colorado

County: Weld	USI-LITE		
Field: Wildcat			
Location: SWSE Sec. 28 T9N R59W			
Well: Brook LC28-75-1BHNC			
Company: Noble Energy Inc	LOCATION		
	Permanent Datum:	GL	Elev: K.B. 4867.0 F
	Log Measured From:	KB	G.L. 4843.0 F
	Drilling Measured From:	KB	D.F. 4866.0 F
Logging Date	API Serial No.	Section	Township
Run Number	05-123-38845-0000	28	9N
			Range
			59W
Depth Driller	Run# USIT		
Schlumberger Depth	10435.0 F		
Bottom Log Interval	10435.0 F		
Top Log Interval	6265.0 F		
Casing Fluid Level	-999.2 F		
Salinity	0.0 F		
Density			
Fluid Level	10.00 LB/G		
BIT/CASING/TUBING STRING	0.0 F		
Bit Size	8.750 IN		
From	-999.2 F		
To	10435.0 F		
Casing Size	7.00 IN		
Weight	26.00 LB/F		
Grade	P110		
From	0.0 F		
To	6497.0 F		
Max Recorded Temp	219.0		
Logger on bottom (date)	20-Aug-2014		
Location	Ft. Morgan CO		
Recorded By	Tim Hoffman		
Witnessed By	Bill Mansfield		

DEPTH SUMMARY LISTING

DEPTH SYSTEM EQUIPMENT

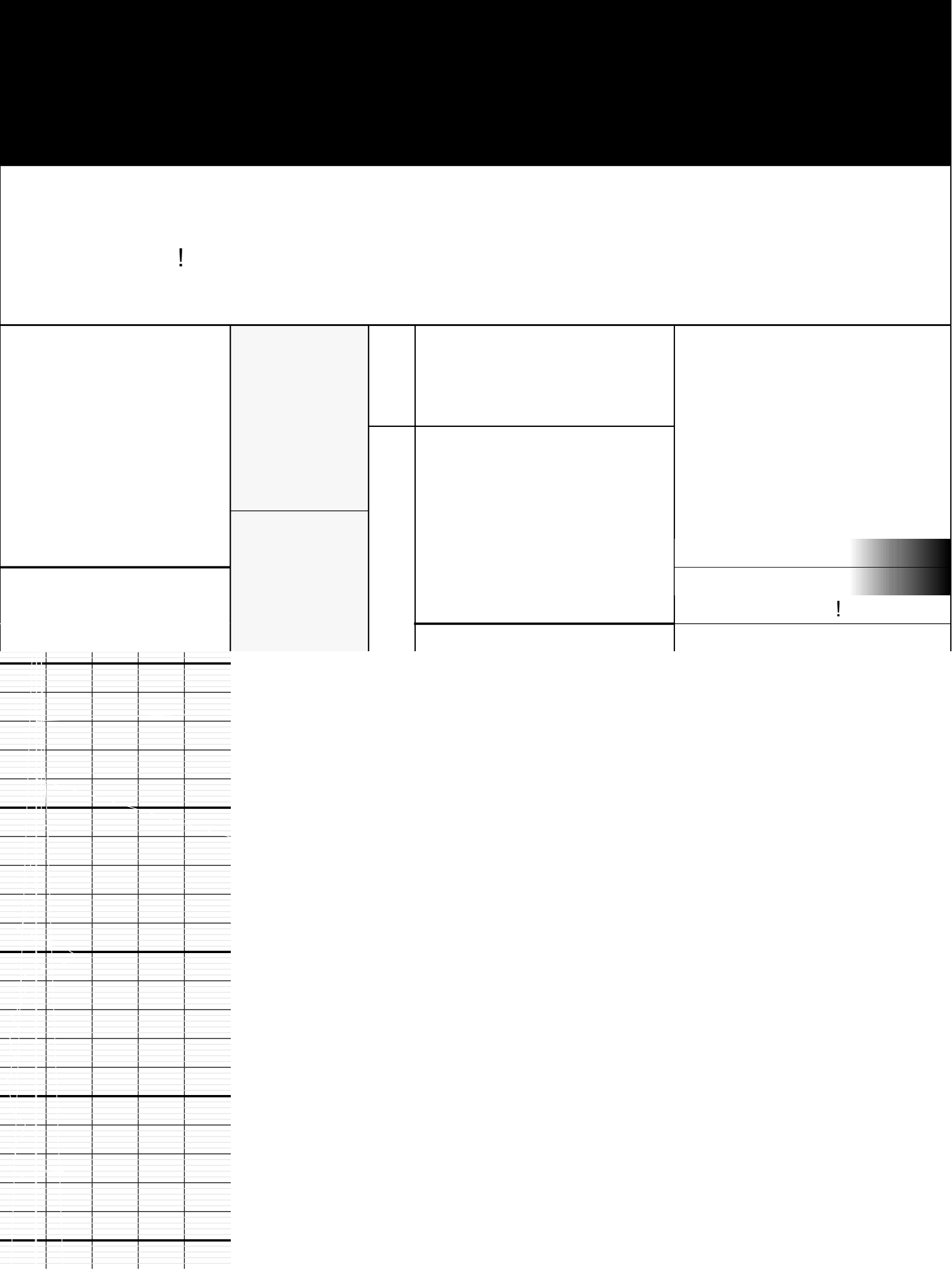
Depth Measuring Device	Tension Device	Logging Cable
Type: Serial Number: Calibration Date: Calibration Cable Type: Wheel Correction 1: Wheel Correction 2:	Type: Serial Number: 1109 Calibration Date: Calibrator Serial Number: Number Of Calibration Points: Calibration RMS: Calibration Peak Error:	Serial Number: Length: 12000.00000

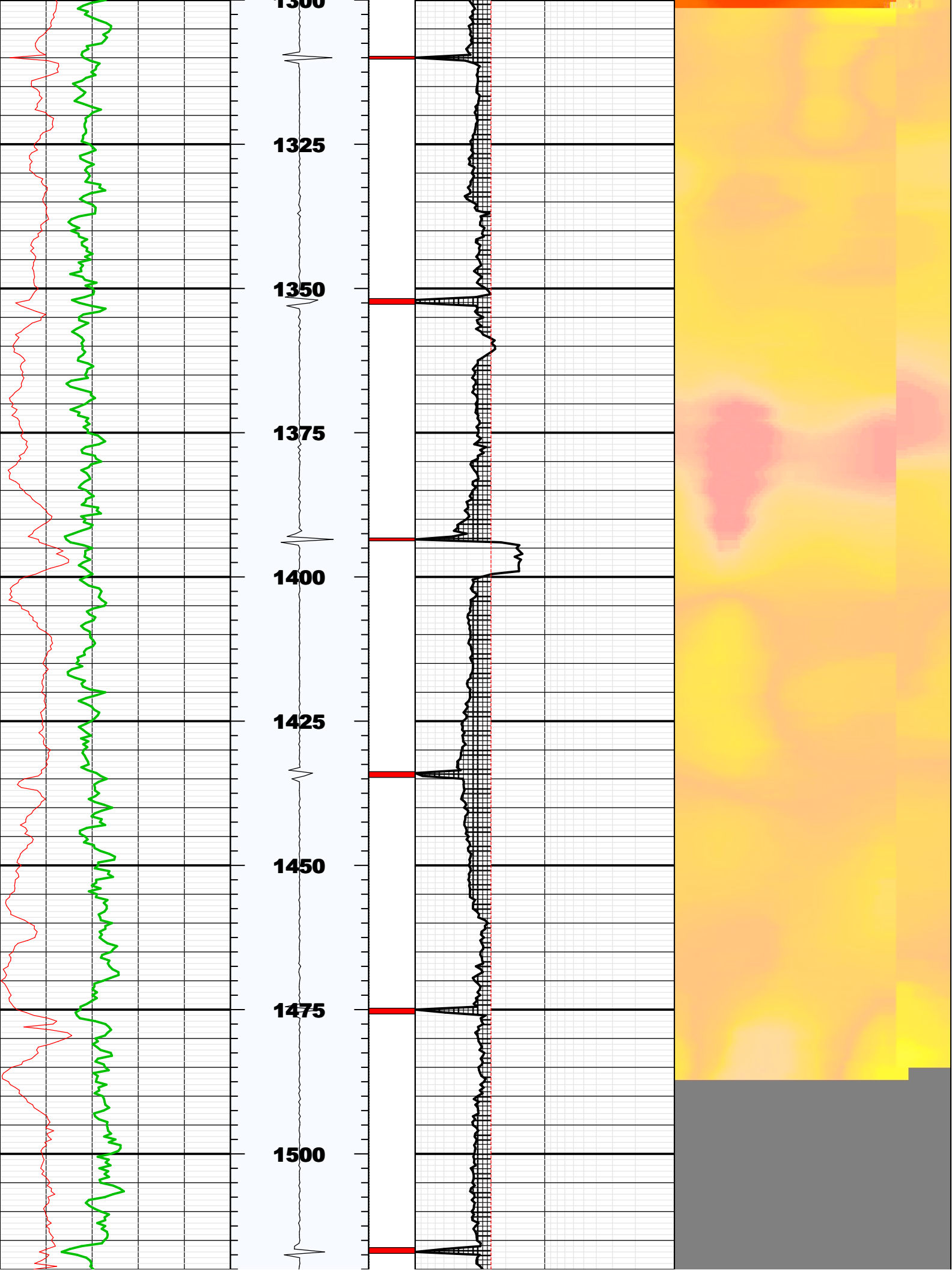
DISCLAIMER

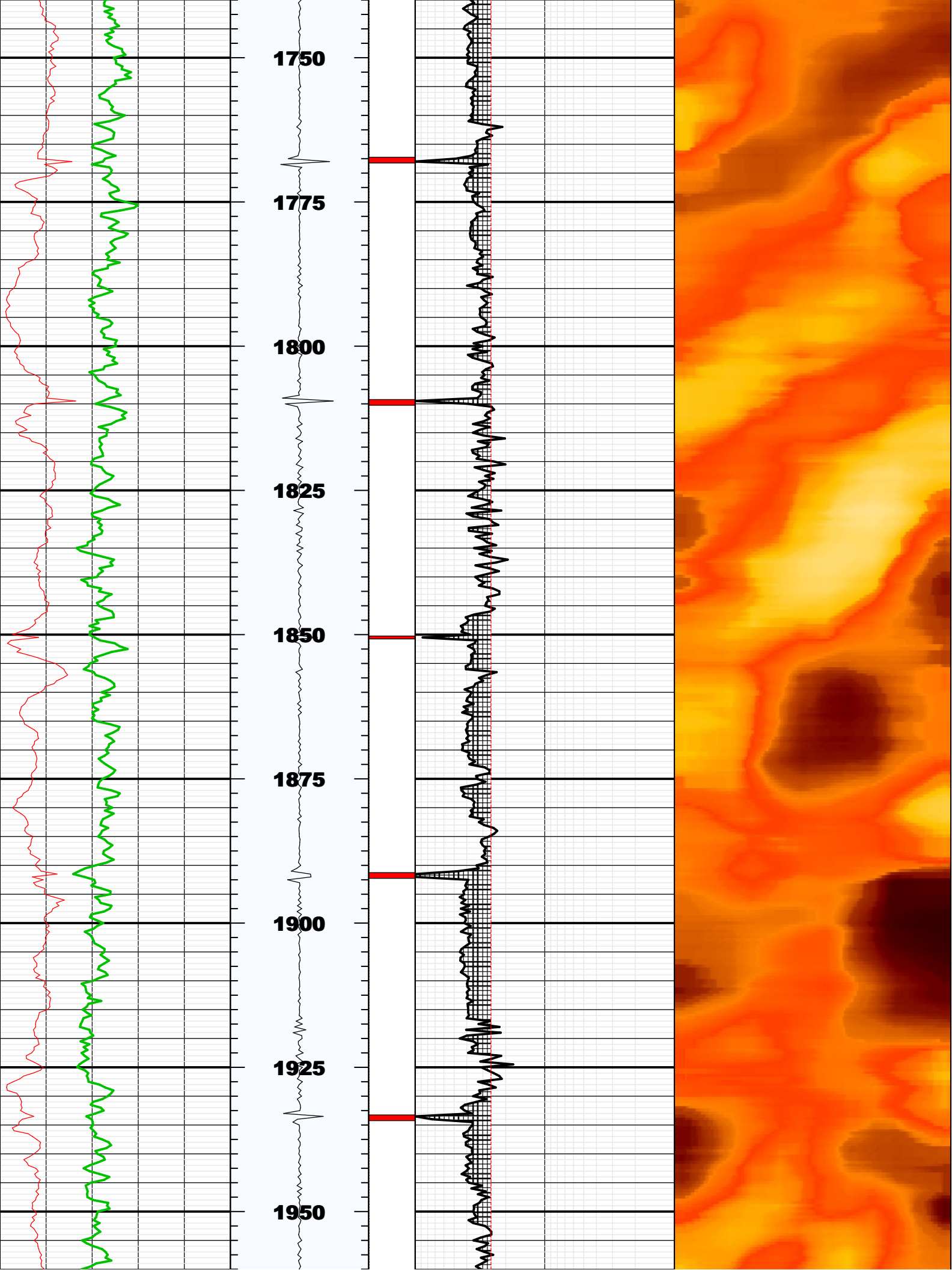
THE USE OF AND RELIANCE UPON THIS RECORDED-DATA BY HEREIN NAMED COMPANY (AND ANY OF ITS AFFILIATES, PARTNERS, REPRESENTATIVES, AGENTS, CONSULTANTS AND EMPLOYEES) IS SUBJECT TO THE TERMS AND CONDITIONS AGREED UPON BETWEEN SCHLUMBERGER AND THE COMPANY, INCLUDING: (a) RESTRICTIIONS ON USE OF THE RECORDED-DATA (b) DISCLAIMERS AND WAIVERS OF WARRANTIES AND REPRESENTATIONS REGARDING COMPANY'S USE OF ANR RELIANCE UPN THE RECORDED-DATA; AND (c)CUSTOMER'S FULL AND SOLE RESPONSIBILITY FOR ANY INFERENCE DRAWN OR DECISIONS MADE IN CONNECTION WITH THE USE OF THIS RECORDED-DATA

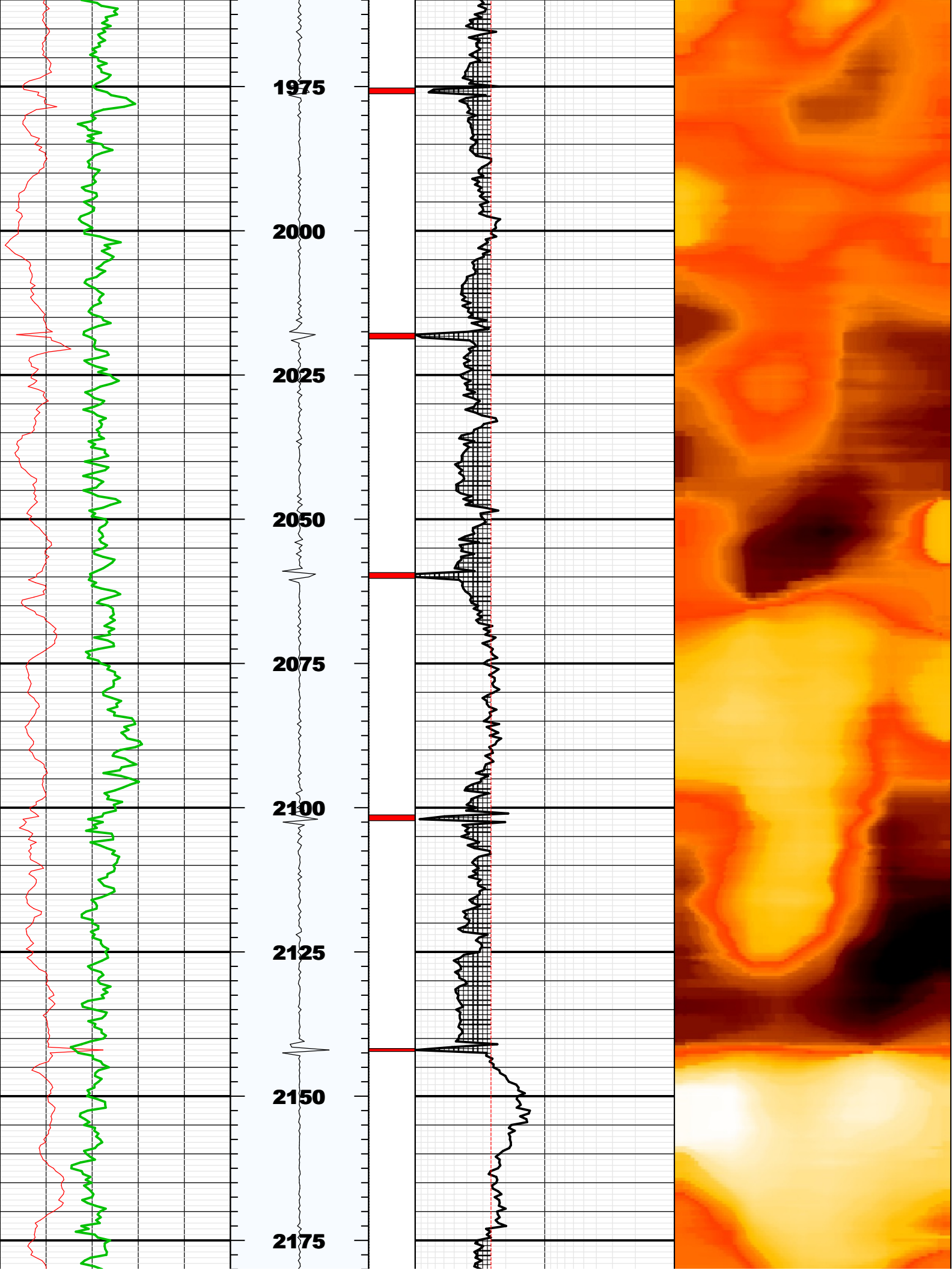
This is the first run in hole
Toolstring run as per tool sketch
13.6 single slurry cement
0 PSI full pass
2500 PSI full pass

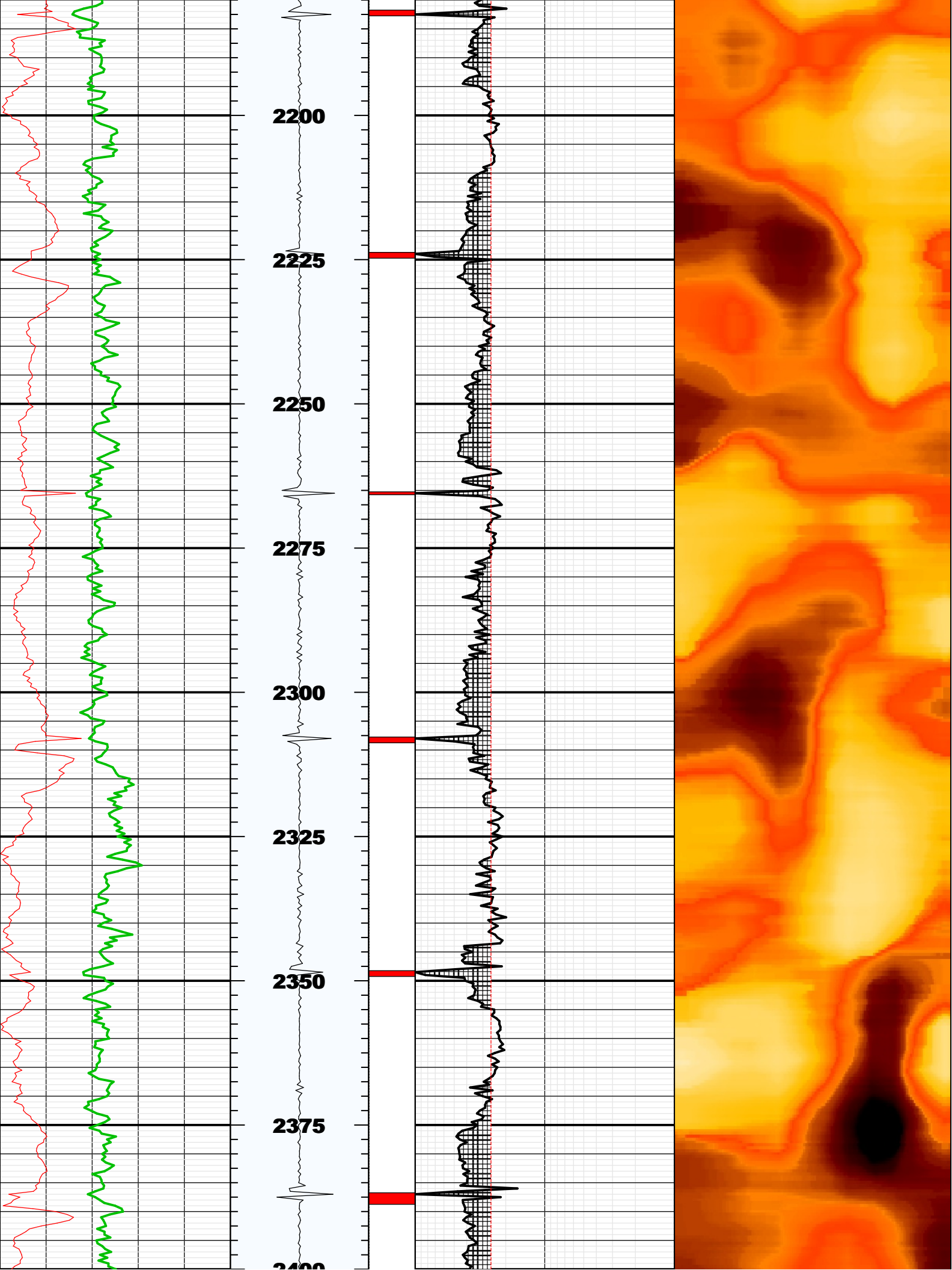
Bottom log temperature 219 degF
Top of cement 1160 ft
Crew Ian Derry Jake Jump

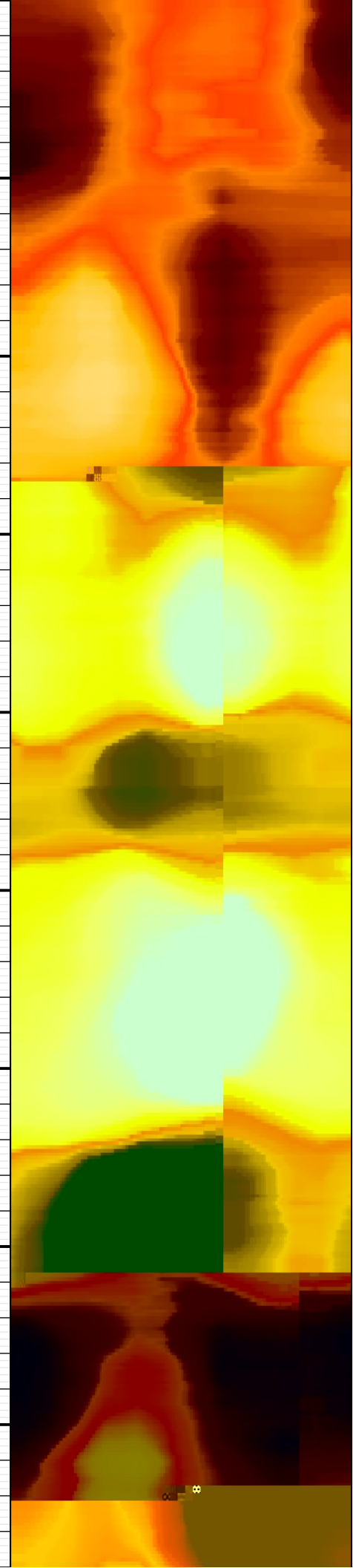
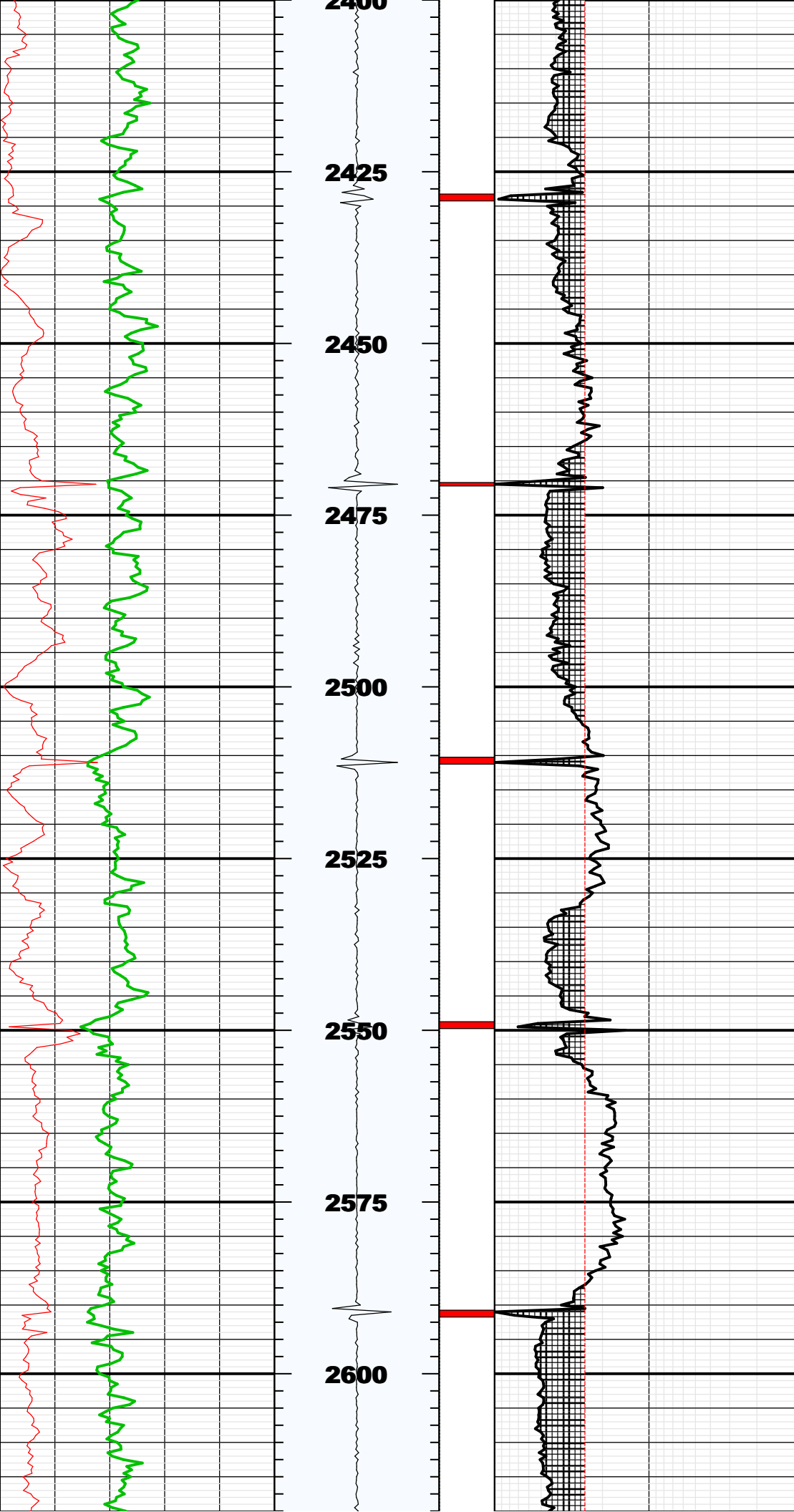


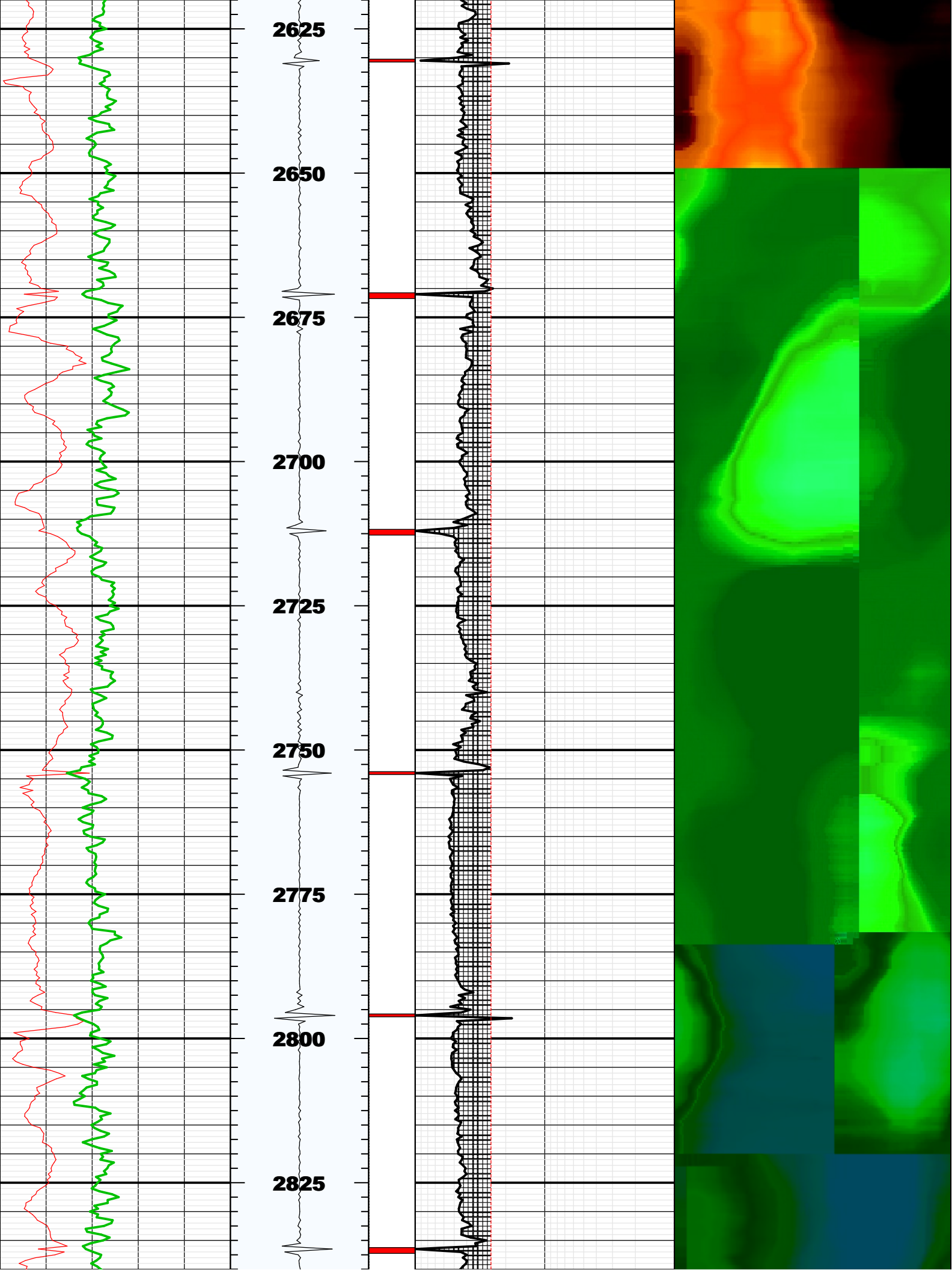


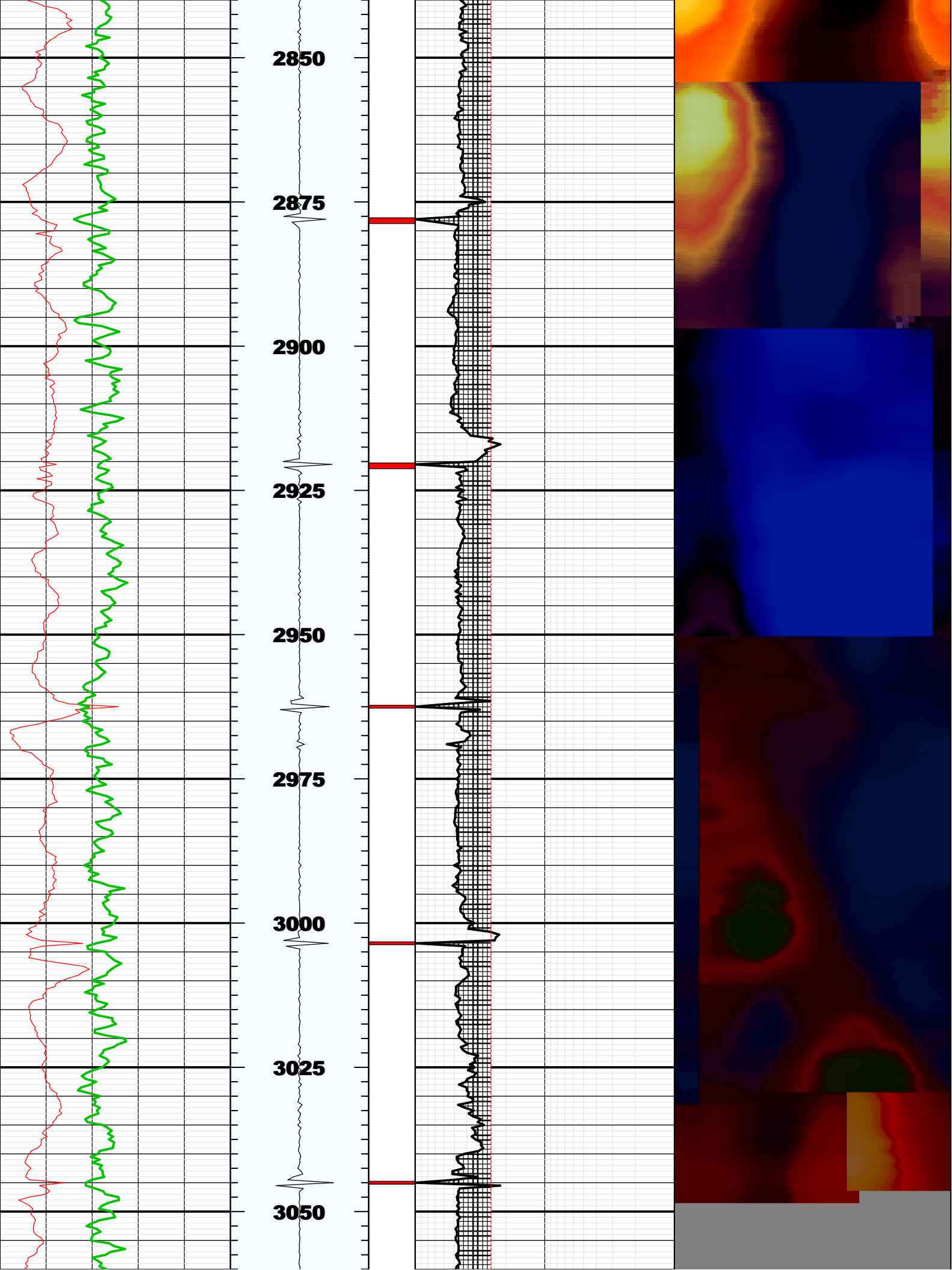


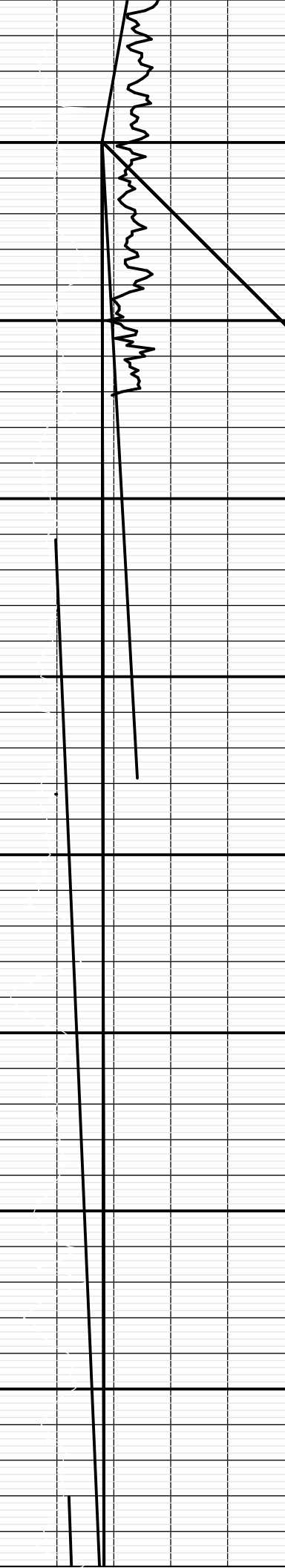


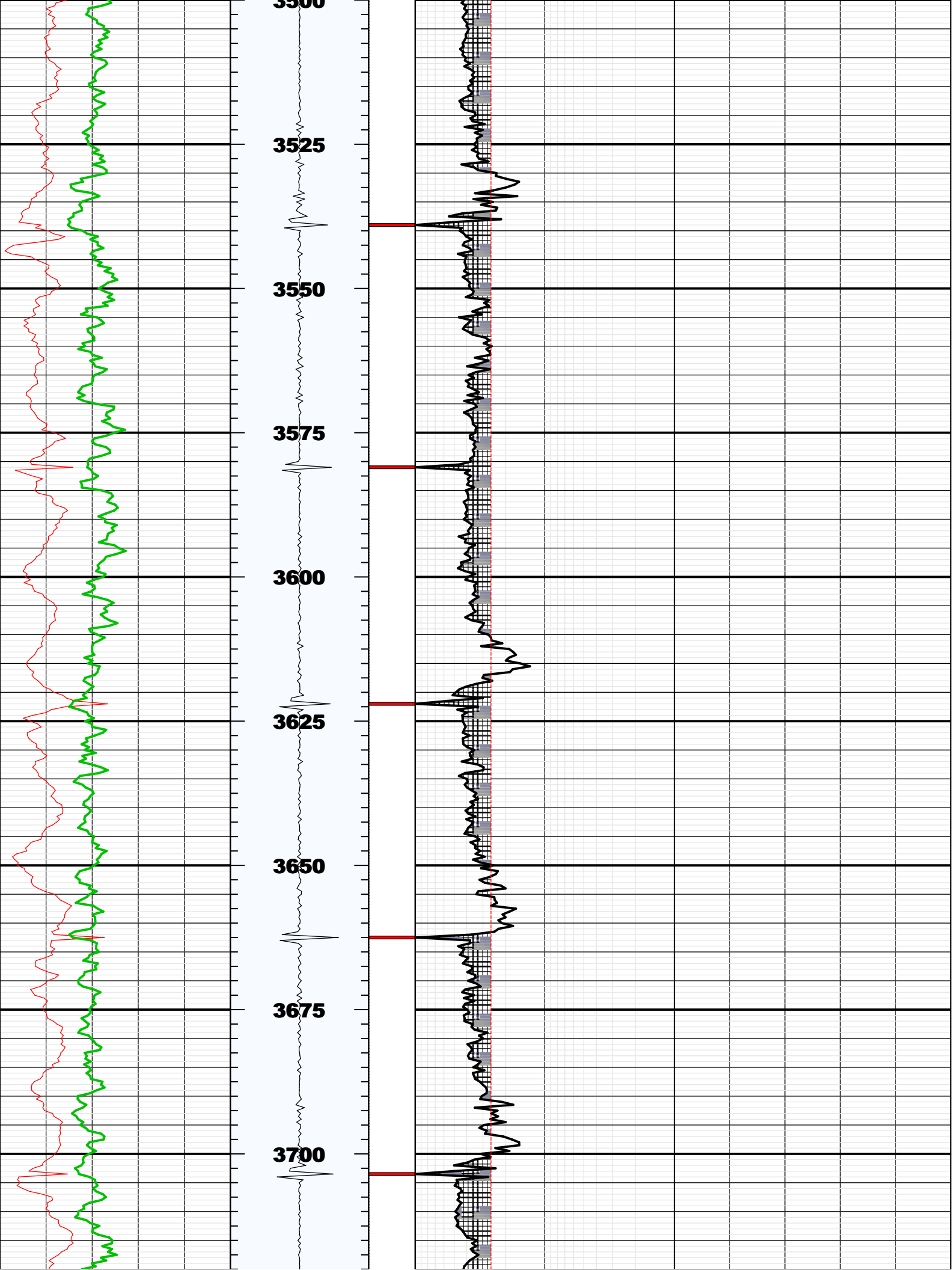


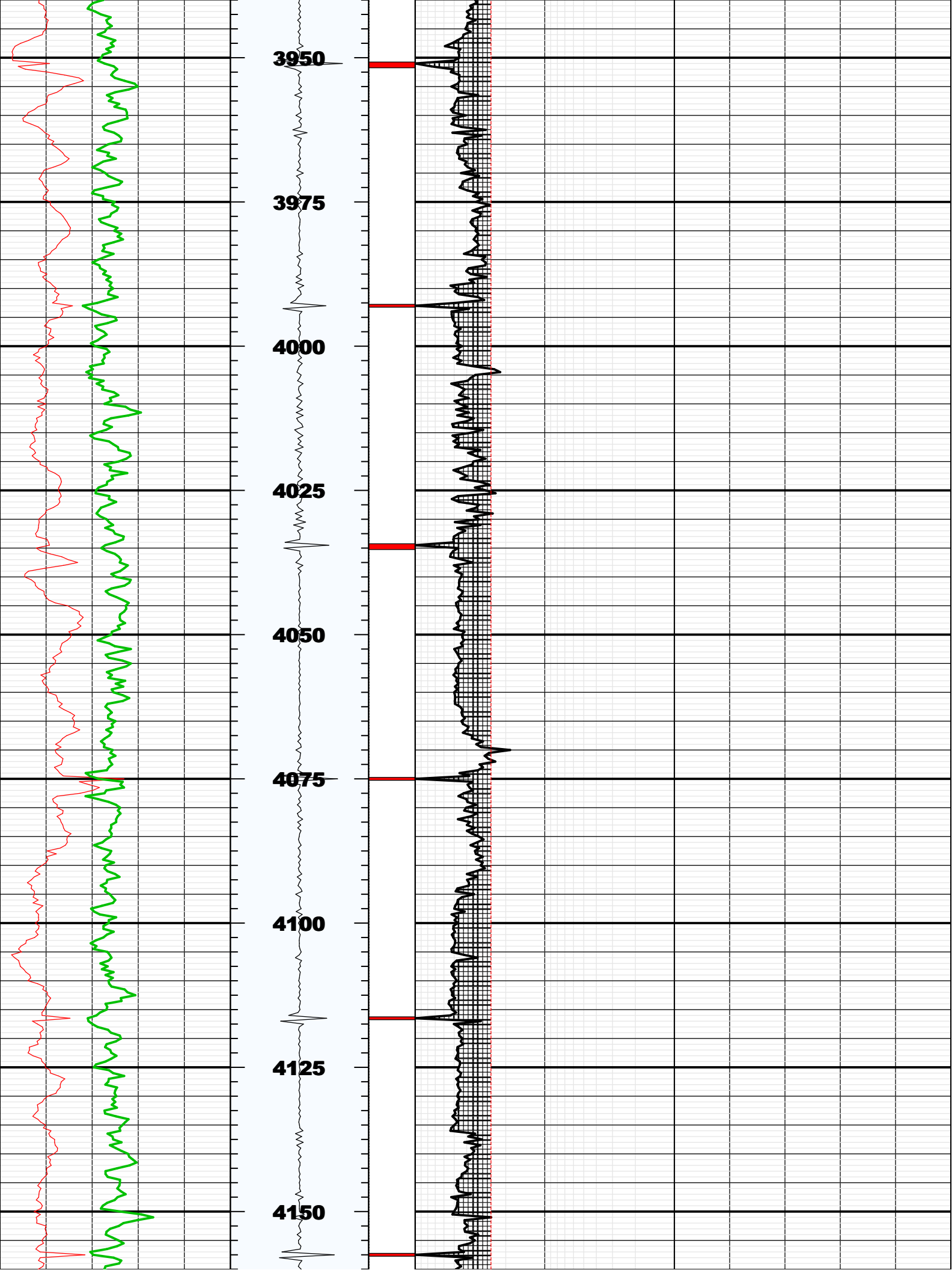


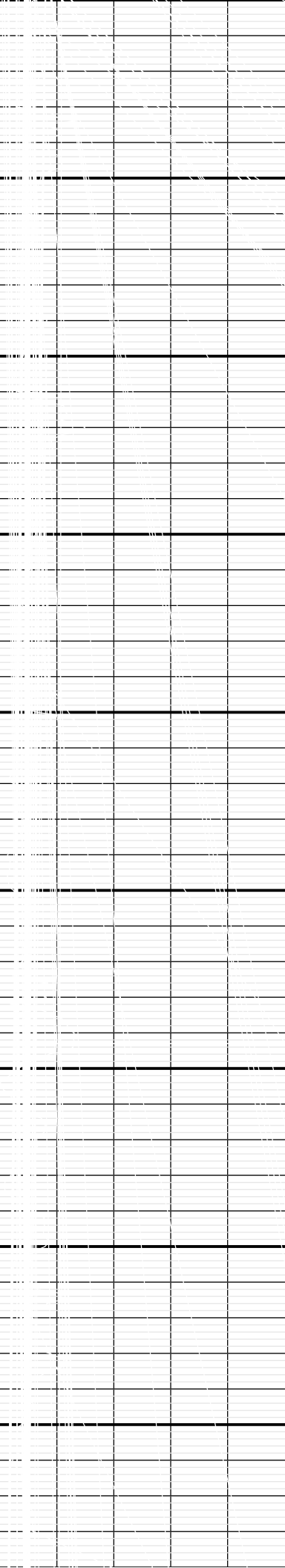


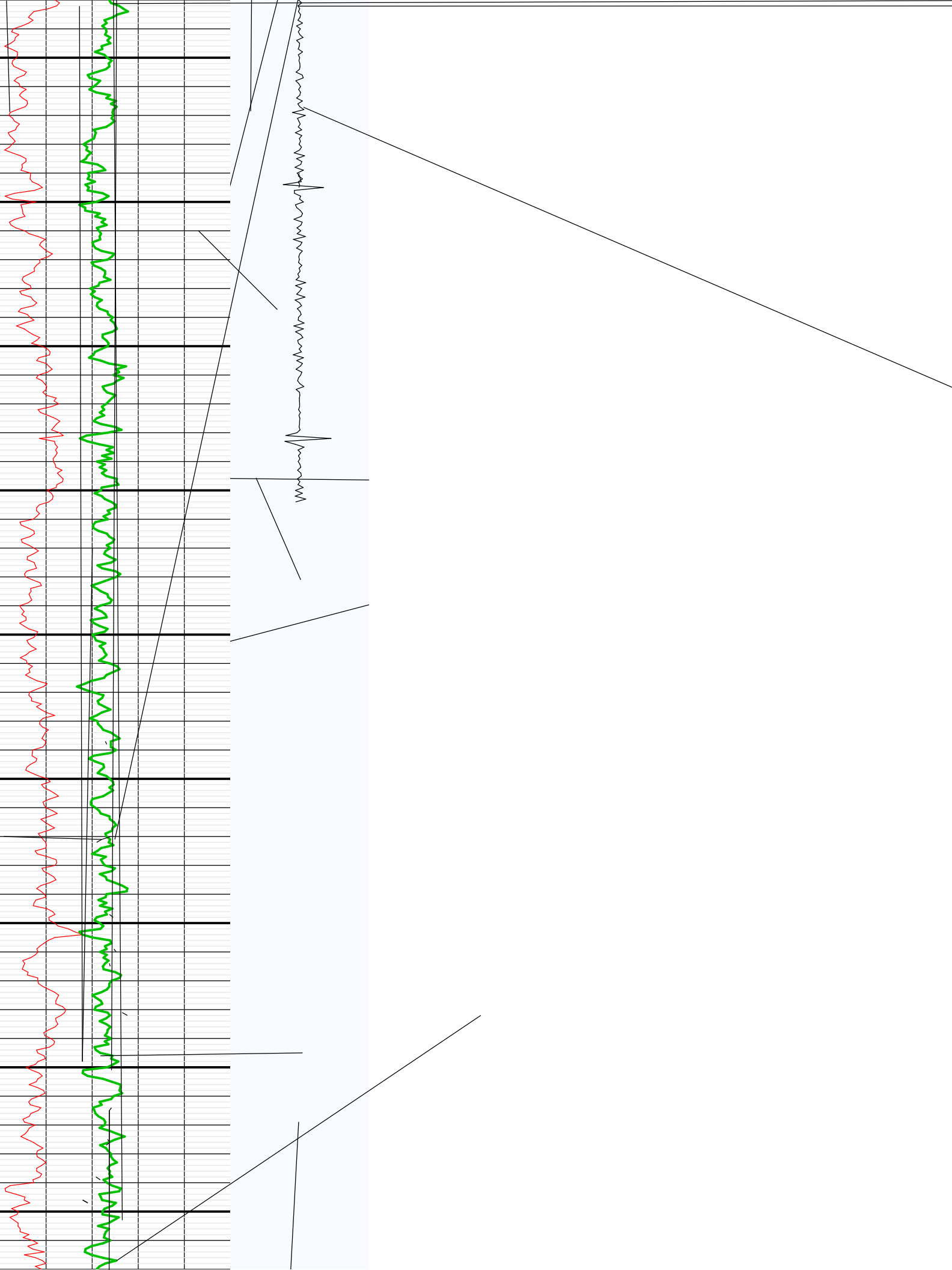


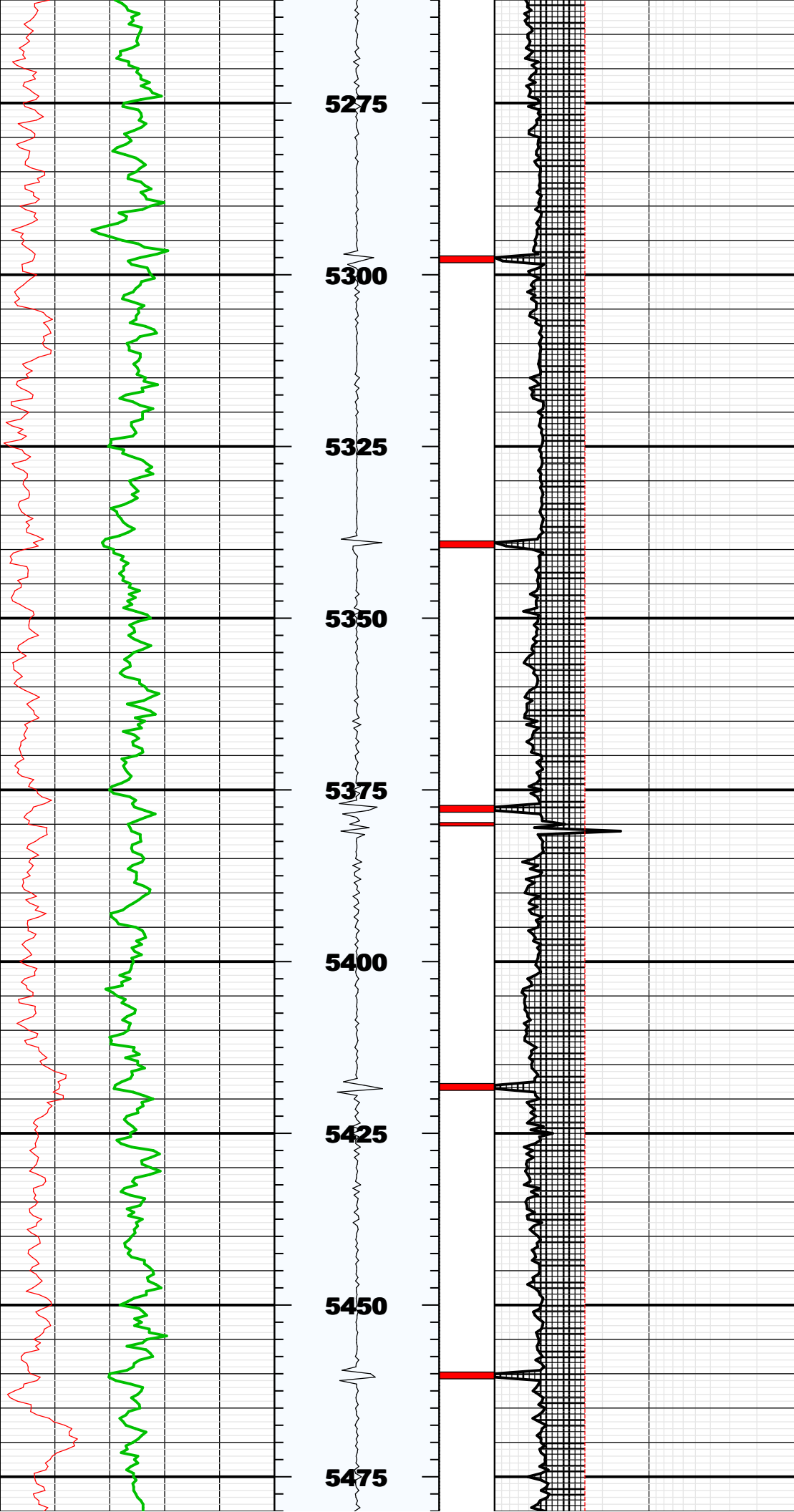


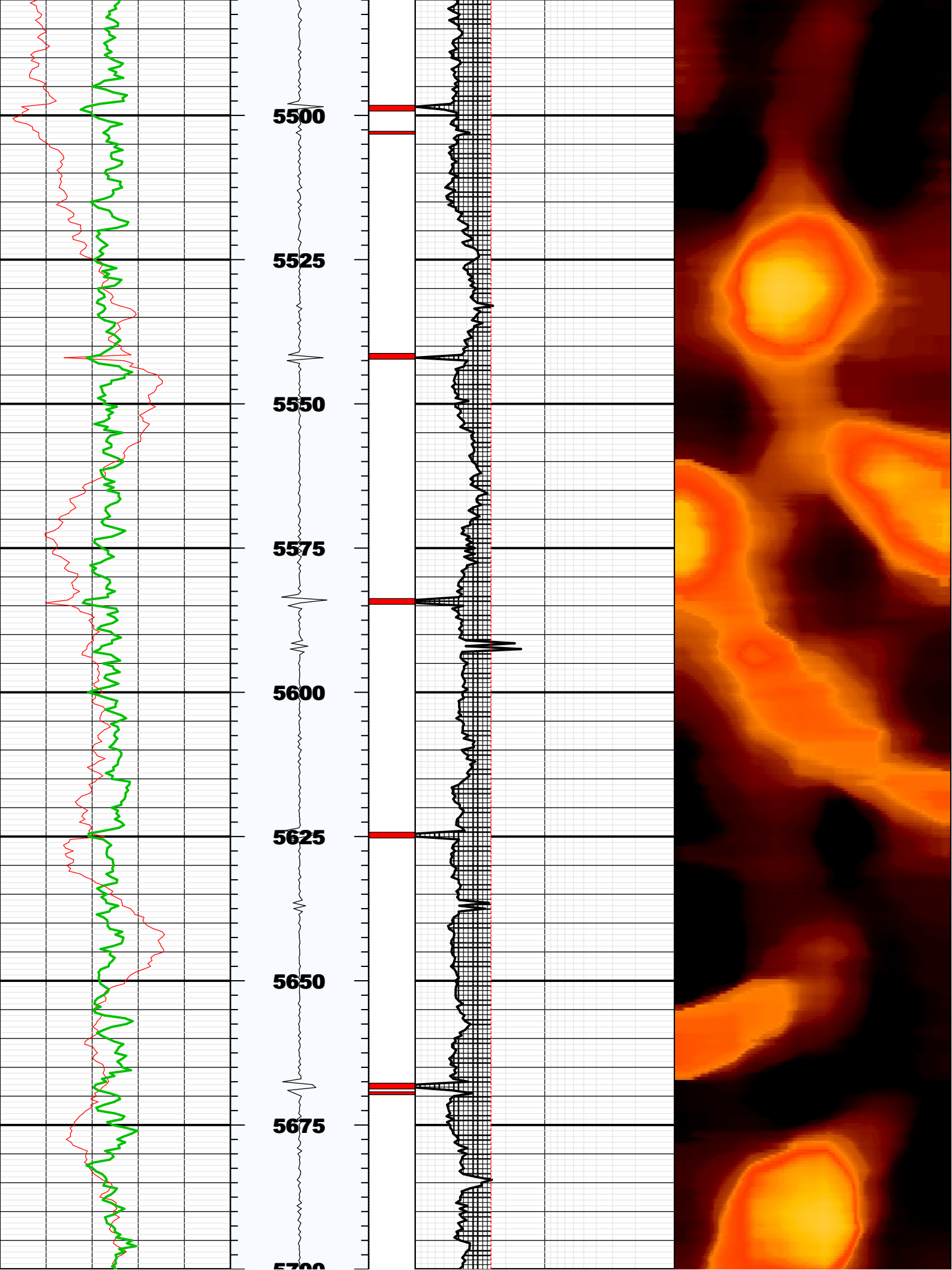


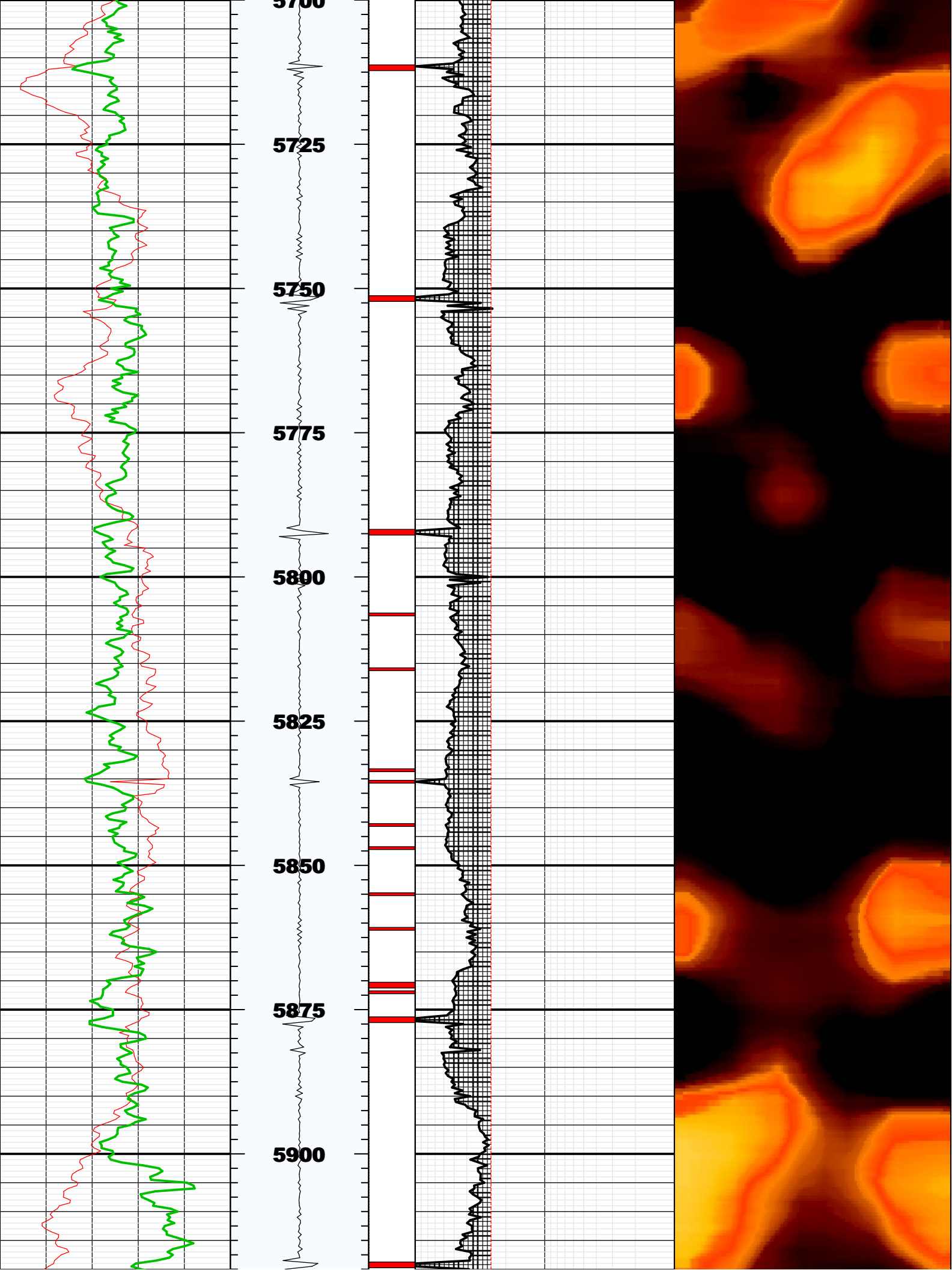


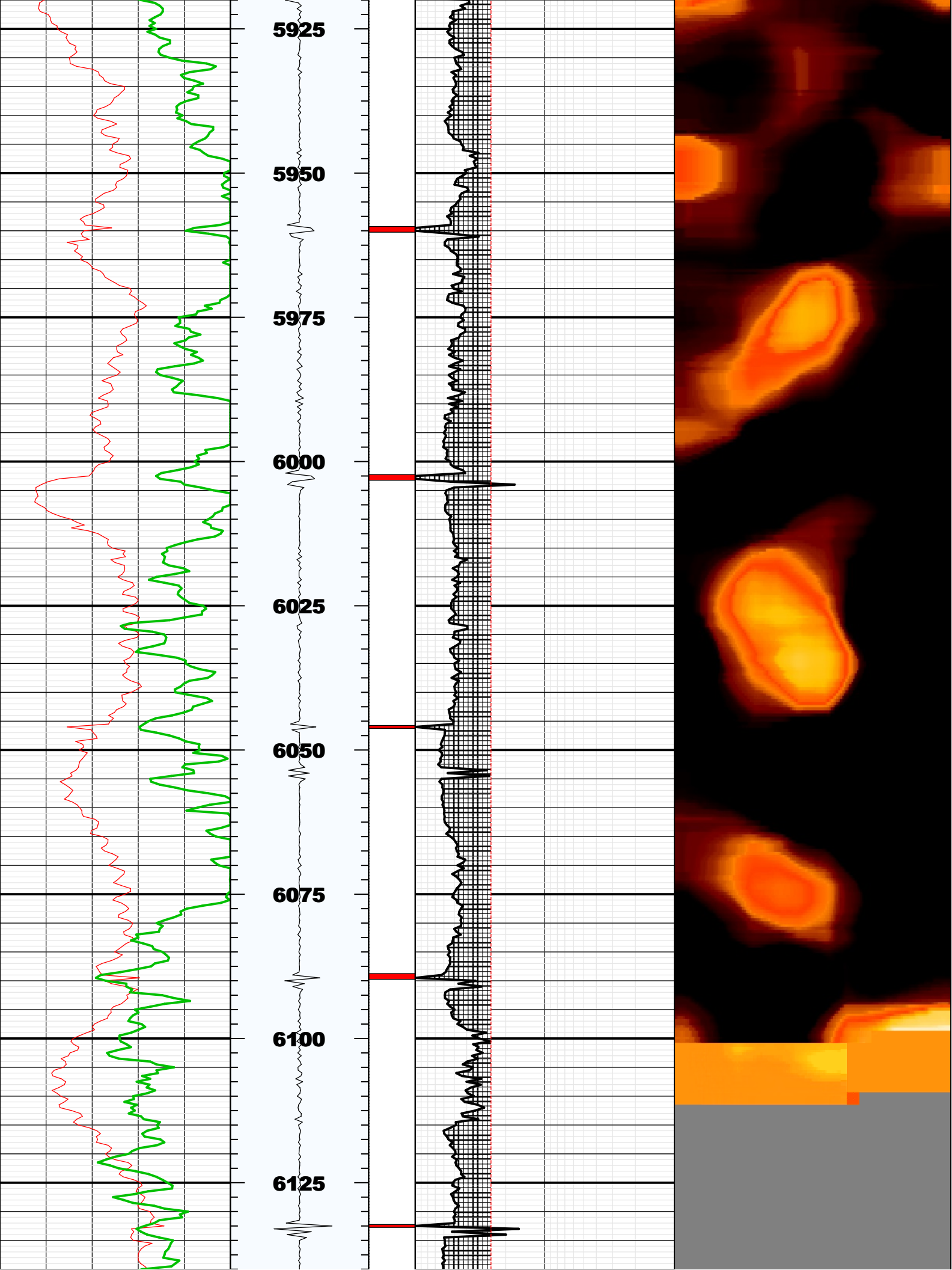












BS	8.75000	IN	Bit Size
CASG	P110		Casing Grade
CDIA	7.00000	IN	Casing Outer Diameter
CSID			
CSIZ	7.00000	IN	Current Casing Size
CWEI	26.00000	LB/F	Casing Weight
DFD	10.00000	LB/G	Drilling Fluid Density
DFVL	188.00000	US/F	Default Fluid Velocity
DO			
DOT	2.87400	IN	Diameter of Transducer Sensor
EMXV	50	V	EMEX Voltage
FDII	0.00000	F	FPM Data Interpolation Interval
FSOD	0_OFF		Fluid Slowness Fits Casing Outer Diameter
LOGMODE			
PP			
STEP	-0.5	F	STEP
THDH	130.00000	%	Maximum Search Thickness (percentage of nominal)
THDL	70.00000	%	Minimum Search Thickness (percentage of nominal)
THDP	Fundamental		Thickness Detection Policy
THNO	0.36200	IN	Nominal Thickness of Casing
TMUC	WRM		Type of Mud
U-USIT_DT3P			
UPAT	375K		Emission Pattern
USUB	7INC		USIT Sub Identifier
UWKM	D603010L		Working Mode
VCAS	51.40000	US/F	Ultrasonic Transversal Velocity in Casing
WINB	32.79592	US	Window Begin Time
WINE	74.19474	US	Window End Time
ZCAS	46.25000	MRAY	Acoustic Impedance of Casing
ZINI	-1.00000	MRAY	Initial Estimate of Cement Impedance
ZMUD	1.80000	MRAY	Acoustic Impedance of Mud
ZTCM	2.60000	MRAY	Acoustic Impedance Threshold for Cement
ZTGS	0.30000	MRAY	Acoustic Impedance Threshold for Gas
WLEN	22.50350	US	T ³ Processing Length

Fluid Properties Used for Main Pass

