

COLUMBINE LOGGING

Scale: 5" / 100'
Measured Depth Log

Well Name Brook LC28-74-1AHNC

Location SWSE SEC 28 T9N R59W

State COLORADO

County WELD

Country USA

Rig Number H&P 273

API Number 05-123-38844

Field WILDCAT

Region DJ BASIN

Drilling Completed 7/29/2014

Spud Date 7/28/2014

Surface Coordinates 340' FSL; 1848' FEL

Ground Elevation 4843'

K.B. Elevation 4867'

Logged Interval 632' To 5460'

Total Depth 5460'

Formation NIOBRARA

Type of Drilling Fluid LSND

Other Symbols

Oil Show

- DEAD
- EVEN
- QUESTIONABLE
- SPOTTED STAINING

Porosity

- E EARTHY
- F FENESTRAL
- F FRACTURE
- X INTERCRYSTALLINE
- ◇ INTEROOLITIC

- MOLDIC
- ORGANIC
- PINPOINT
- VUGGY

Engineering

- BIT
- CONNECTION (LEFT)
- CONNECTION (RIGHT)
- CONNECTION GAS
- CORE - LOST
- CORE - RECOVERED
- DST INTERVAL

- FAULT
- FORMATION TOP
- GAS SHOW
- MN DEPTH
- NORMAL FAULT
- OIL SHOW
- OVERTURNED STRATA
- REVERSE FAULT
- SLIDE
- SURVEY
- TRIP GAS

- WIRELINE TESTED - LEFT
- WIRELINE TESTED - RT

Rounding

- ANGULAR
- ROUNDED
- SUBANG
- SUBRND

Textures

- BOUNDSTONE
- CHALKY
- CRYPTOXLN

- E EARTHY
- FINELYXLN
- GRAINSTONE
- L LITHOGRAPHIC
- MX MICROXLN
- MS MUDSTONE
- PS PACKSTONE
- WS WACKSTONE

Sorting

- M MODERATE
- P POOR
- W WELL

Zone Color Coding

- Oil
- Condensate
- Gas
- Note
- Core
- Pressure
- Error
- Water
- Seal

Accessories

Fossils

- ALGAE
- AMPHIPORA
- BELEMNITE
- BIOCLASTIC
- BRACHIOPOD
- BRYOZOA
- CEPHALOPOD
- COBAN
- FOSSIL
- GASTROPOD
- INOCERAMUS
- OOLITE
- OSTRACOD
- PELECYPOD
- PELLET
- PISOLITE
- PLANT REMAINS
- PLANT PROPOG

- ANHYDRITIC
- ARGILLACEOUS
- ARGILLITE GRAIN
- BENTONITE
- BITUMENOUS SUBSTANCE
- BRECCIA FRAGMENTS
- CALCAREOUS
- CARBONACEOUS FLAKES
- CHTDK
- CHULT

- FERRUGINOUS
- GLAUCONITE
- GYPSIFEROUS
- HEAVY MINERAL
- KAOLIN
- MARLSTONE
- MINERAL CRYSTALS
- NODULES
- PHOSPHATE PELLETS
- TYNITE

- TUFFACEOUS

Stringer

- ANHYDRITE STRINGER
- BENTONITE STRINGER
- COAL STRINGER
- DOLOMITE STRINGER
- GYPSUM STRINGER
- LIMESTONE STRINGER
- MARLSTONE (OIL) STRINGER

CORAL
CRINOID
ECHINOID
FISH
FORAMINIFERA

PLANT SPORES
SCAPHOPOD
STROMATOPOROID

Minerals

CHERT
COAL - THIN BEDS
DOLOMITIC
FELDSPAR
FERRUGINOUS PELLET

PYRITE
SALT CAST
SANDY
SILICEOUS
SILTY

MARLSTONE (CALC) STRG
MARLSTONE (DOL) STRG
SANDSTONE STRINGER
SHALE STRINGER
SILTSTONE STRINGER

Rock Types

UNKNOWN
CHALK
MARLSTONE
SANDSTONE
SHALY SANDSTONE
SILTY SHALE
ANHYDRITE
BENTONITE
BRECCIA

CEMENT
CHERT
CLAY CHOKE SAND
CLAYSTONE
COAL
CONGLOMERATE
DOLOMITE
GRANITE
GYPSUM

IGNEOUS
LIMESTONE
SIDERITE or LIMONITE
METAMORPHIC
NO SAMPLE
SALT
SALT- PEPPER SAND
SHALE
SHALE COLORED

SHALE GRAY
SHALY SILTSTONE
SILTSTONE
TILL
TUFF
WELDED TUFF

Operator

Company NOBLE ENERGY INC.

Address 1625 Broadway Suite 2200
Denver, CO 80202

Other

Wellsite Geologist #1 Laura Kellogg

Wellsite Geologist #2 Tim Bright

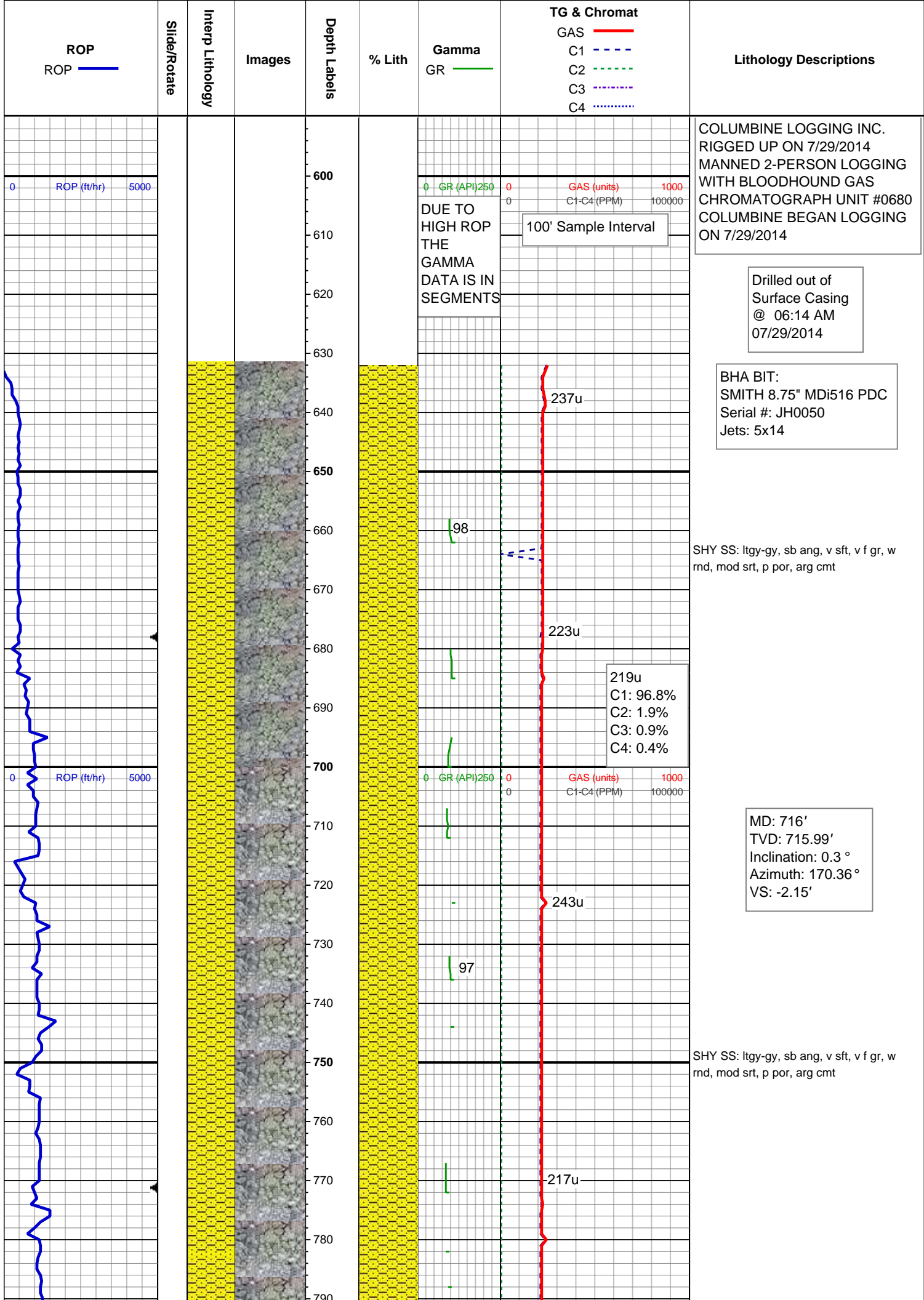
Wellsite Geological Services Provided By Columbine Logging Inc.

Geologist

Name RENEE CLACKLER

Company NOBLE ENERGY INC.

Address 1625 Broadway Suite 2200
Denver, CO 80202



DUE TO
HIGH ROP
THE
GAMMA
DATA IS IN
SEGMENTS

SHY SS: ltgy-gy, sb ang, v sft, v f gr, w
rnd, mod srt, p por, arg cmt

SHY SS: ltgy-gy, sb ang, v sft, v f gr, w
rnd, mod srt, p por, arg cmt

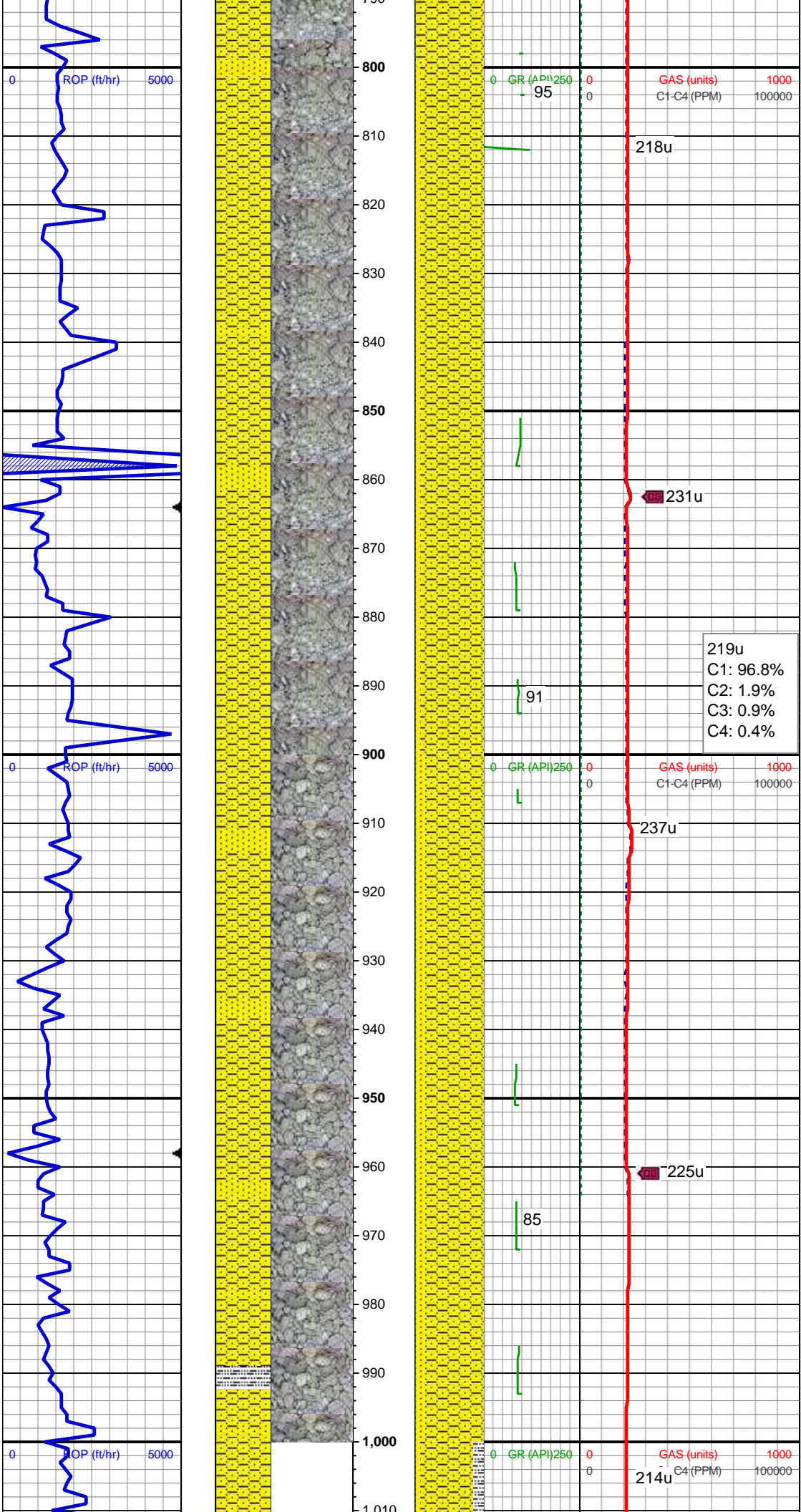
WT IN 8.60+/- OUT 8.60+
VIS IN 29/ OUT 29

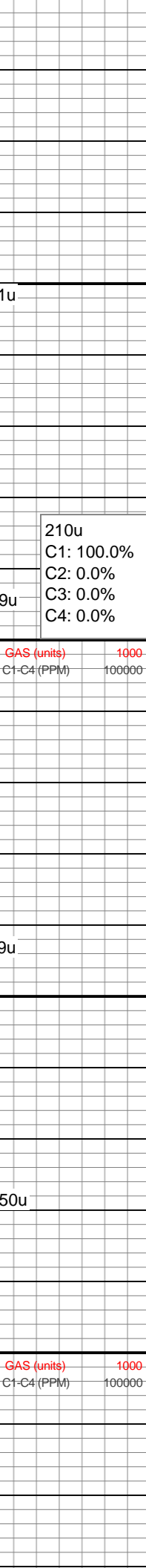
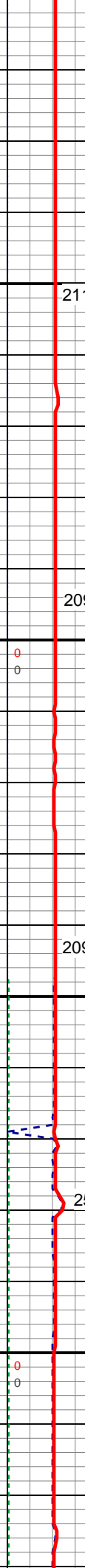
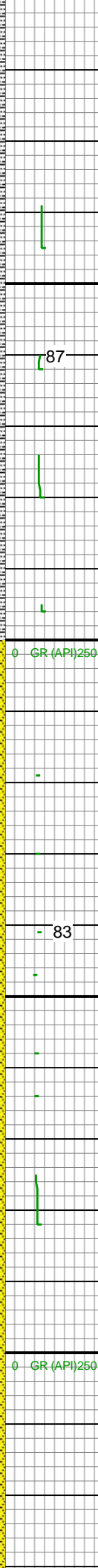
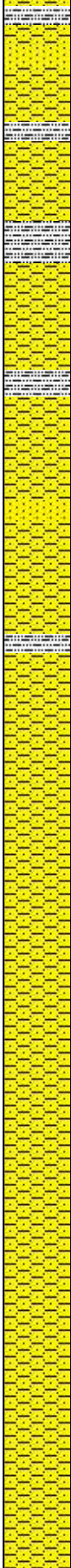
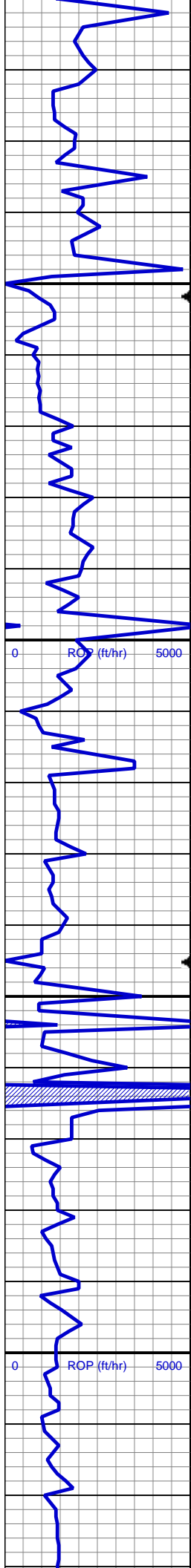
MD: 809'
TVD: 808.99'
Inclination: 0.41 °
Azimuth: 129.61 °
VS: -2.62'

SHY SS: ltgy-gy, sb ang, v sft, v f gr, w
rnd, mod srt, p por, arg cmt; intbd wi occ
SS: ltgy-wh-op, sb ang, v fri, f gr - v f gr,
mod rnd, p srt, p por, arg cmt, occ glau,
tr lith frag

MD: 902'
TVD: 901.99'
Inclination: 0.15 °
Azimuth: 193.3 °
VS: -2.96'

SHY SS: ltgy-gy, sb ang, v sft, v f gr, w
rnd, mod srt, p por, arg cmt; intbd wi occ
SS: ltgy-wh-op, sb ang, v fri, f gr - v f gr,
mod rnd, p srt, p por, arg cmt, occ glau,
tr lith frag

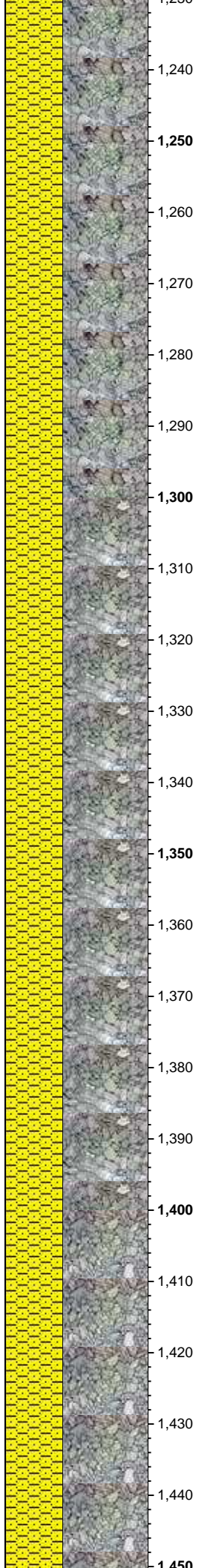
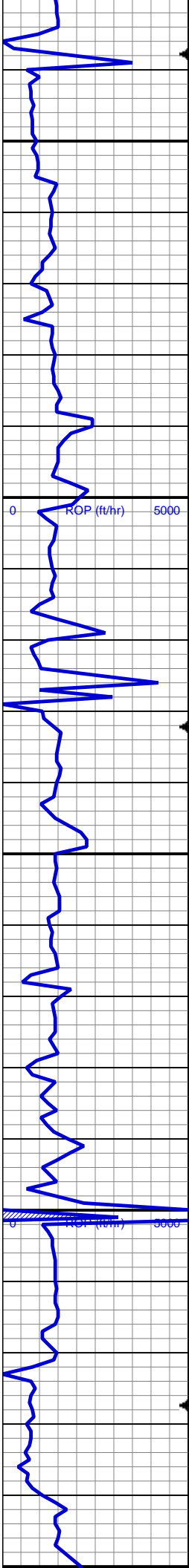




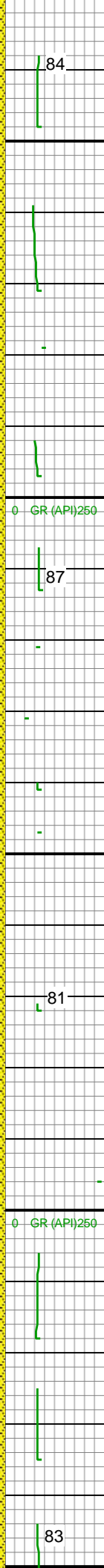
SHY SS: ltgy-gy, sb ang, v sft, v f gr, w
rnd, mod srt, p por, arg cmt; intbd wi occ
SLTY SH: gy-dk gy, sb blkgy-sb plty, v sft,
sly tex, arg cmt
SS: ltgy-wh-op, sb ang, v fri, f gr - v f gr,
mod rnd, p srt, p por, arg cmt, occ glau,
tr lith frag

MD: 1,088'
TVD: 1,087.99'
Inclination: 0.11 °
Azimuth: 166.56 °
VS: -3.38'

SHY SS: ltgy-gy, sb ang, v sft, v f gr, w
rnd, mod srt, p por, arg cmt; intbd wi occ



1,230
1,240
1,250
1,260
1,270
1,280
1,290
1,300
1,310
1,320
1,330
1,340
1,350
1,360
1,370
1,380
1,390
1,400
1,410
1,420
1,430
1,440
1,450



209u
207u
256u
206u
284u

207u
C1: 96.8%
C2: 1.9%
C3: 0.9%
C4: 0.4%

SHY SS: ltgy-gy, sb ang, v sft, v f gr, w
rnd, mod srt, p por, arg cmt, abnt lith frag

MD: 1,274'
TVD: 1,273.99'
Inclination: 0.28 °
Azimuth: 195.3 °
VS: -3.98'

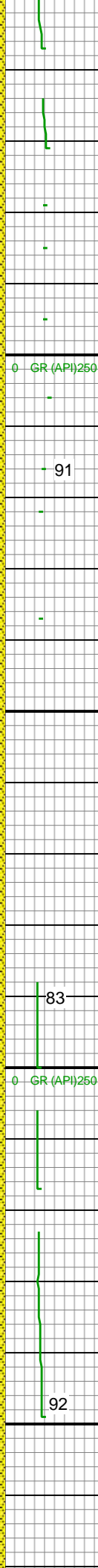
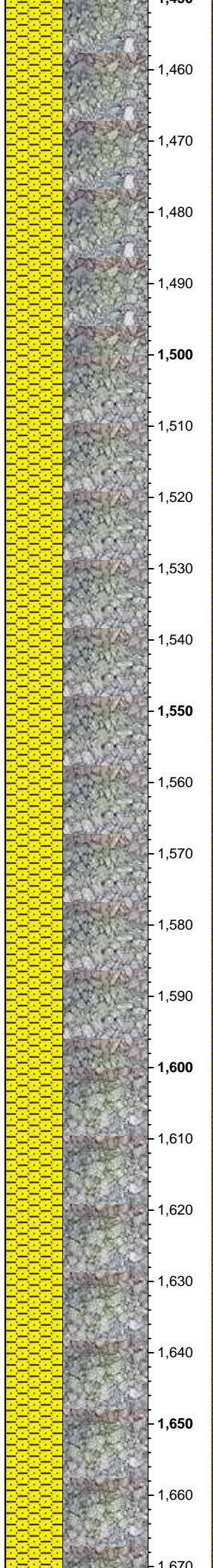
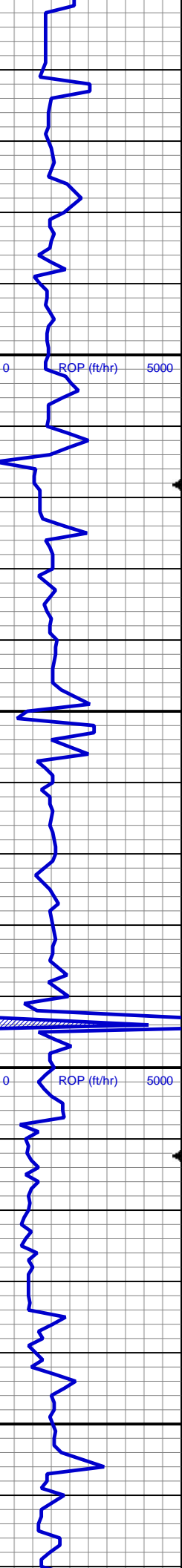
SHY SS: ltgy-gy, sb ang, v sft, v f gr, w
rnd, mod srt, p por, arg cmt, abnt lith frag

SHY SS: ltgy-gy, sb ang, v sft, v f gr, w

rnd, mod srt, p por, arg cmt, abnt lith frag

MD: 1,460'
TVD: 1,459.98'
Inclination: 0.03 °
Azimuth: 183.08 °
VS: -4.46'

209u
C1: 96.8%
C2: 1.9%
C3: 0.9%
C4: 0.4%



209u

91

228u

204u

83

205u

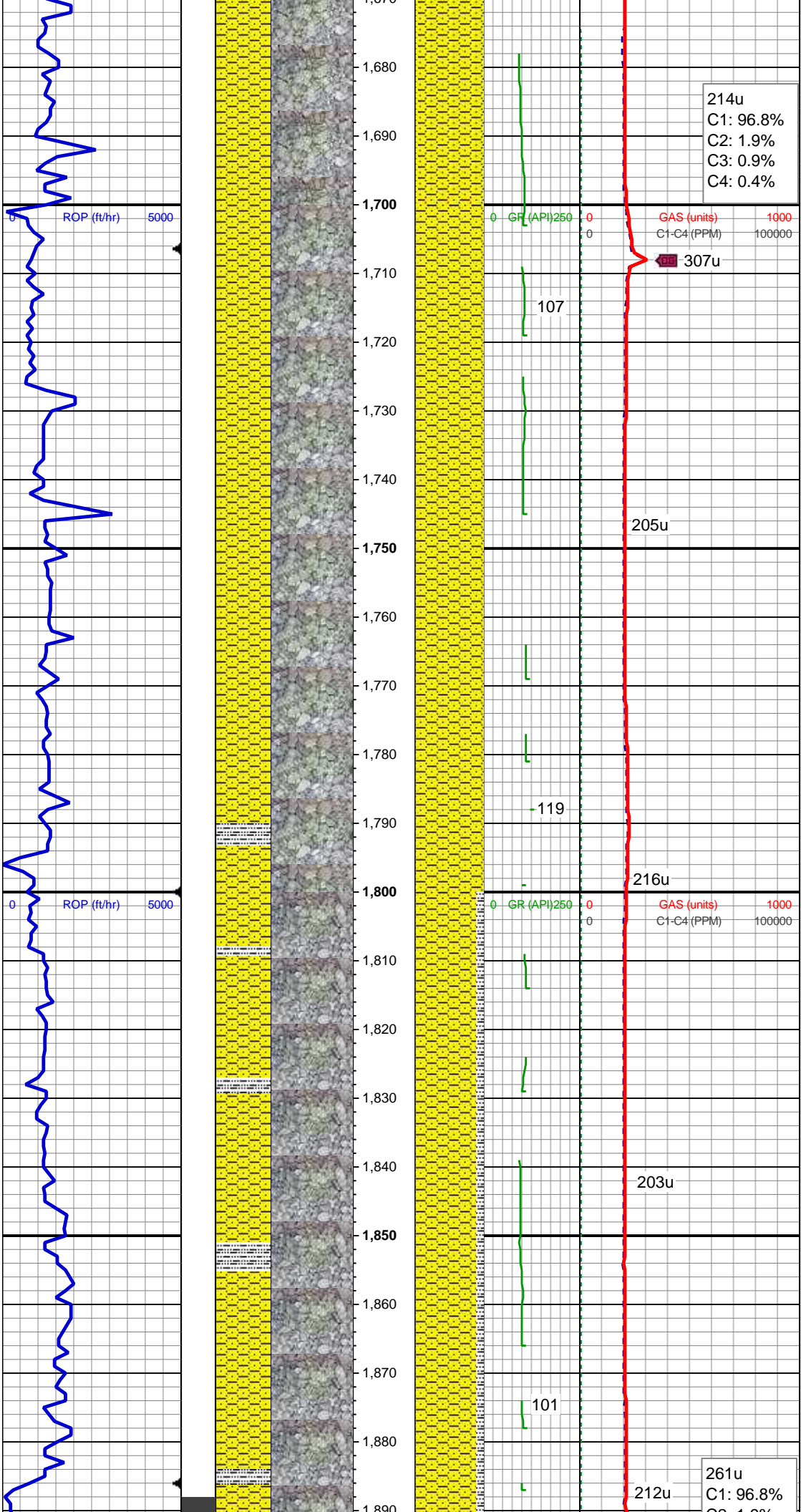
209u

92

SHY SS: ltgy-gy, sb ang, v sft, v f gr, w
rnd, mod srt, p por, arg cmt, abnt lith frag

MD: 1,553'
TVD: 1,552.98'
Inclination: 0.22 °
Azimuth: 291.26 °
VS: -4.42'

SHY SS: ltgy-gy, sb ang, v sft, v f gr, w
rnd, mod srt, p por, arg cmt; intbd wi occ
SS: ltgy-wh-op, sb ang, v fri, f gr - v f gr,
mod rnd, p srt, p por, arg cmt, occ glau,
tr lith frag



214u
C1: 96.8%
C2: 1.9%
C3: 0.9%
C4: 0.4%

GAS (units) 1000
C1-C4 (PPM) 100000

307u

107

205u

SHY SS: ltgy-gy, sb ang, v sft, v f gr, w
rnd, mod srt, p por, arg cmt, occ lith frag,
tr glauc

119

216u

GAS (units) 1000
C1-C4 (PPM) 100000

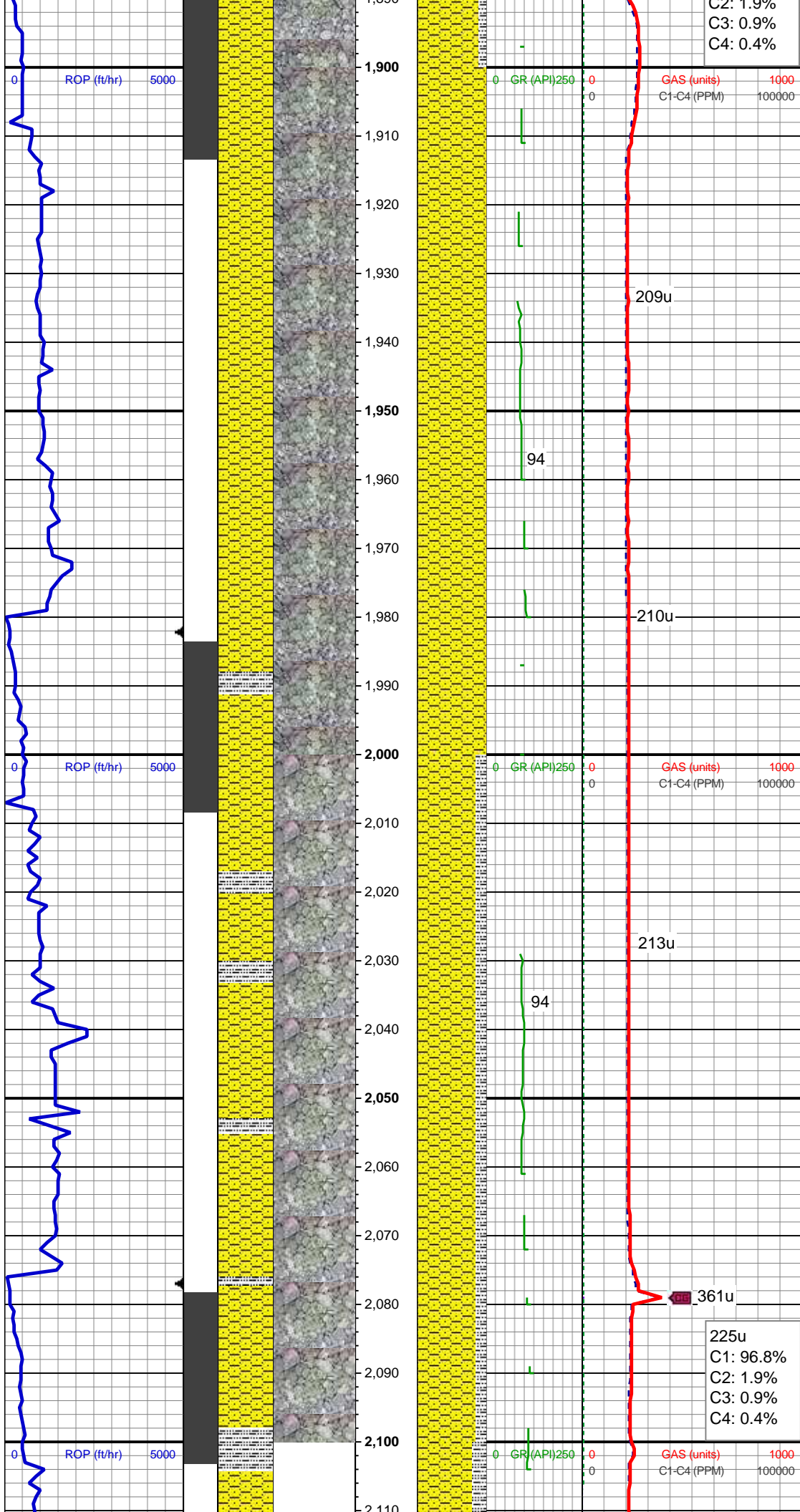
203u

SHY SS: ltgy-gy, sb ang, v sft, v f gr, w
rnd, mod srt, p por, arg cmt; intbd wi occ
SLTY SH: gy-dk gy, sb blkly-sb plty, v sft,
sly tex, arg cmt

101

212u

261u
C1: 96.8%
C2: 1.9%
C3: 0.9%
C4: 0.4%



MD: 1,927'
TVD: 1,926.96'
Inclination: 2.06 °
Azimuth: 213.97 °
VS: -6.28'

SHY SS: ltgy-gy, sb ang, v sft, v f gr, w
rnd, mod srt, p por, arg cmt, occ lith frag,
tr glauc

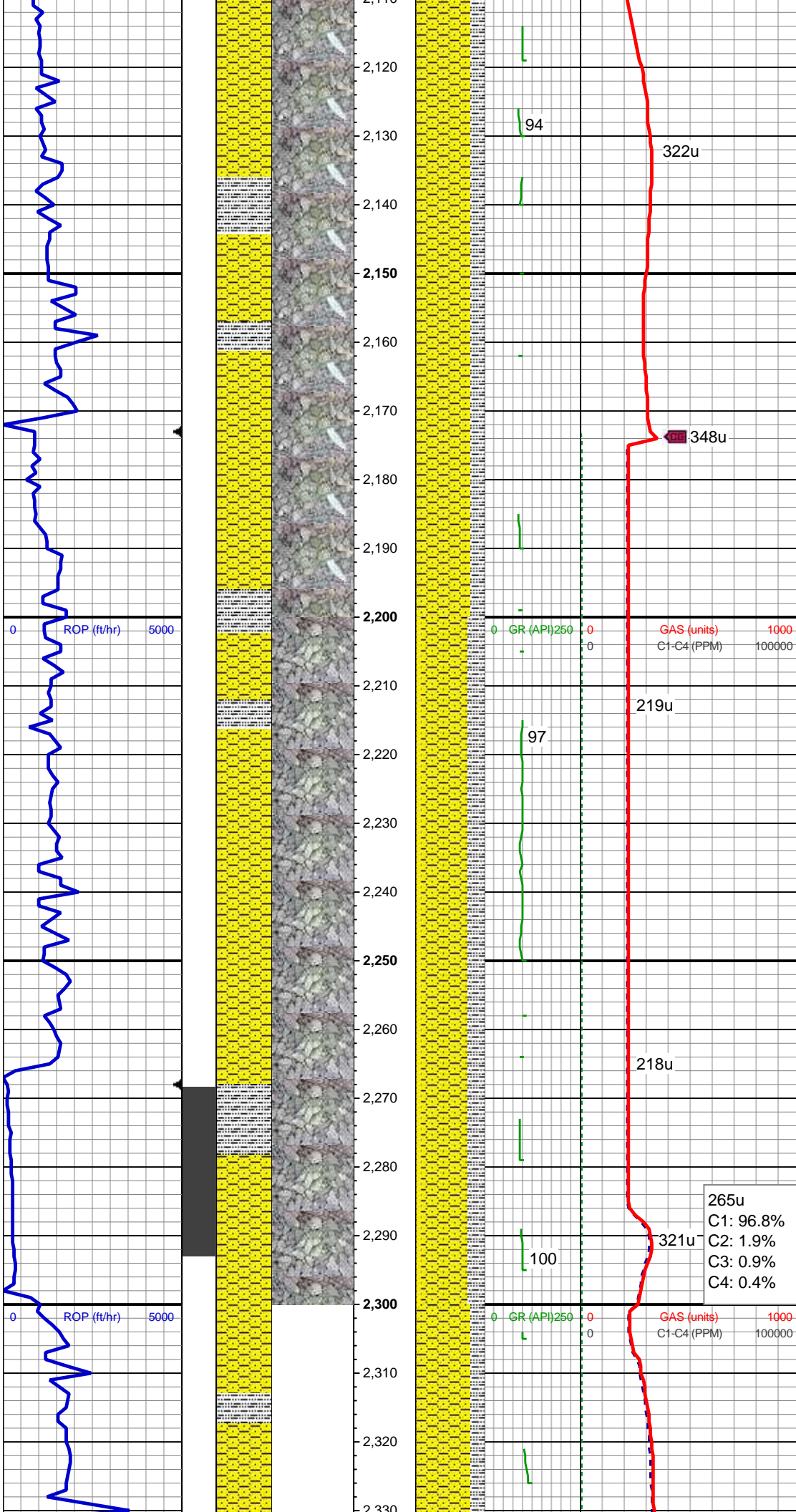
WT IN 9.00/ OUT 9.00
VIS IN 34/ OUT 34

MD: 2,022'
TVD: 2,021.83'
Inclination: 3.84 °
Azimuth: 205.85 °
VS: -10.51'

SHY SS: ltgy-gy, sb ang, v sft, v f gr, w
rnd, mod srt, p por, arg cmt; intbd wi occ
SLTY SH: gy-dk gy, sb blkly-sb plty, v sft,
sly tex, arg cmt

225u
C1: 96.8%
C2: 1.9%
C3: 0.9%
C4: 0.4%

MD: 2,117'



MD: 2,117'
TVD: 2,116.49'
Inclination: 5.84 °
Azimuth: 205.12 °
VS: -17.68'

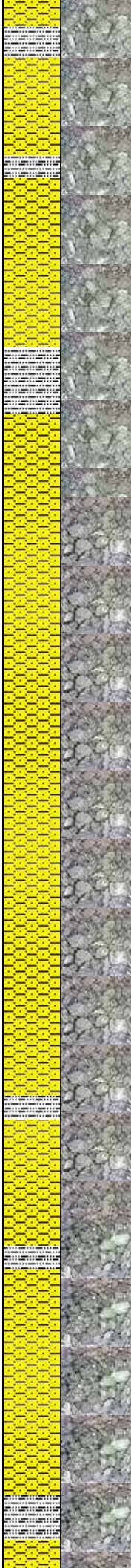
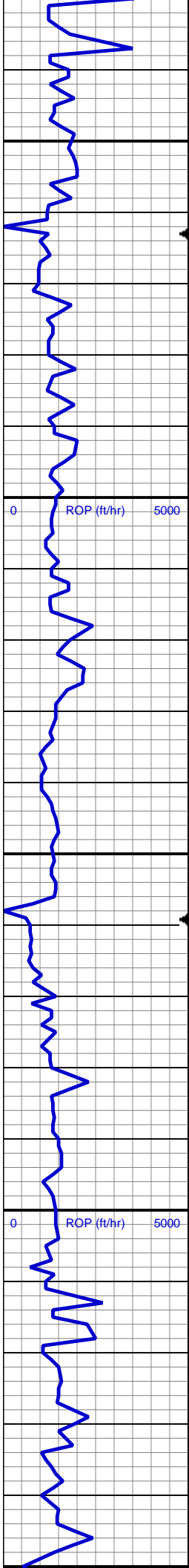
SHY SS: ltgy-gy, sb ang, v sft, v f gr, w
rnd, mod srt, p por, arg cmt; intbd wi occ
SLTY SH: gy-dk gy, sb blkgy-sb plty, v sft,
silty tex, arg cmt

MD: 2,212'
TVD: 2,211.02'
Inclination: 5.53 °
Azimuth: 204.06 °
VS: -26.15'

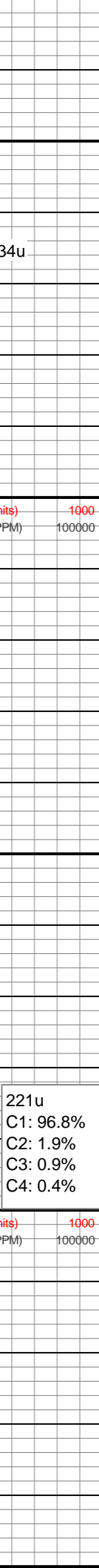
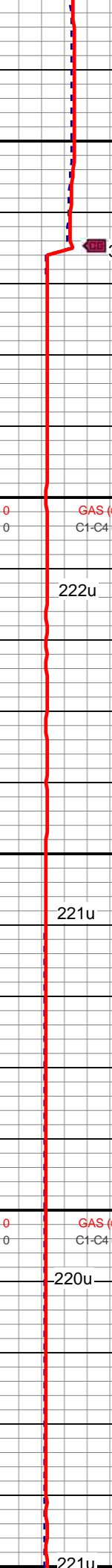
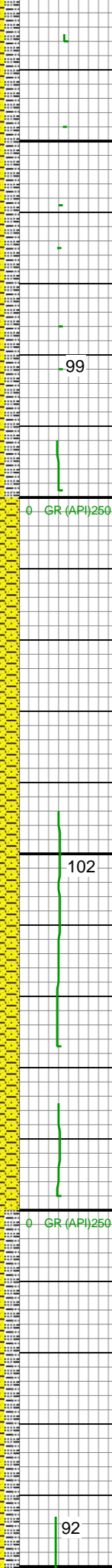
SHY SS: ltgy-gy, sb ang, v sft, v f gr, w
rnd, mod srt, p por, arg cmt
SLTY SH: gy-dk gy, sb blkgy-sb plty, v sft,
silty tex, arg cmt
SS: ltgy-wh-op, sb ang, v fri, f gr - v f gr,
mod rnd, p srt, p por, arg cmt, occ glau,
tr lith frag

265u
C1: 96.8%
C2: 1.9%
C3: 0.9%
C4: 0.4%

MD: 2,307'
TVD: 2,305.39'
Inclination: 7.67 °
Azimuth: 194.88 °
VS: -36.39'



2,330
2,340
2,350
2,360
2,370
2,380
2,390
2,400
2,410
2,420
2,430
2,440
2,450
2,460
2,470
2,480
2,490
2,500
2,510
2,520
2,530
2,540
2,550



SHY SS: ltgy-gy, sb ang, v sft, v f gr, w
rnd, mod srt, p por, arg cmt
SLTY SH: gy-dk gy, sb blkly-sb plty, v sft,
silty tex, arg cmt

MD: 2,401'
TVD: 2,398.6'
Inclination: 7.17 °
Azimuth: 192.47 °
VS: -48.12'

SHY SS: ltgy-gy, sb ang, v sft, v f gr, w
rnd, mod srt, p por, arg cmt, occ lith frag,
tr glauc

221u
C1: 96.8%
C2: 1.9%
C3: 0.9%
C4: 0.4%

MD: 2,496'
TVD: 2,492.9'
Inclination: 6.72 °
Azimuth: 190.23 °
VS: -59.34'

SHY SS: ltgy-gy, sb ang, v sft, v f gr, w
rnd, mod srt, p por, arg cmt

334u

99

222u

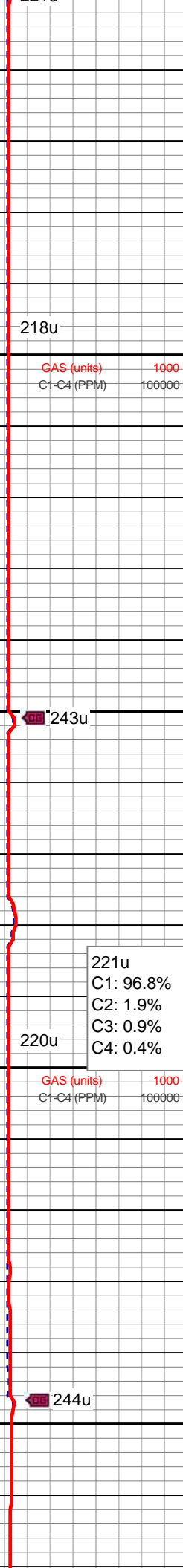
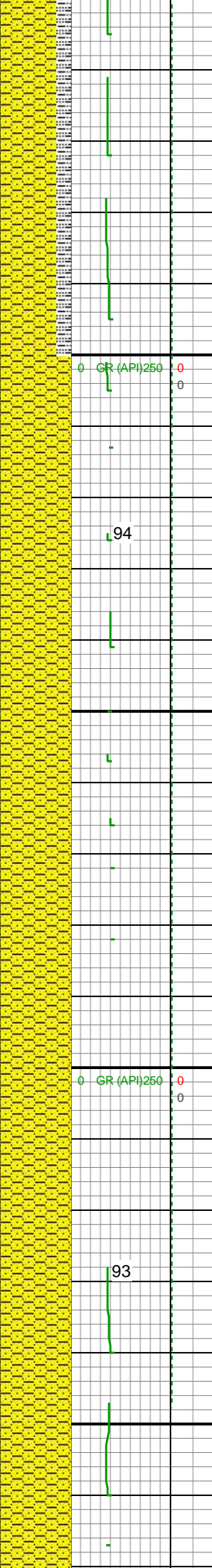
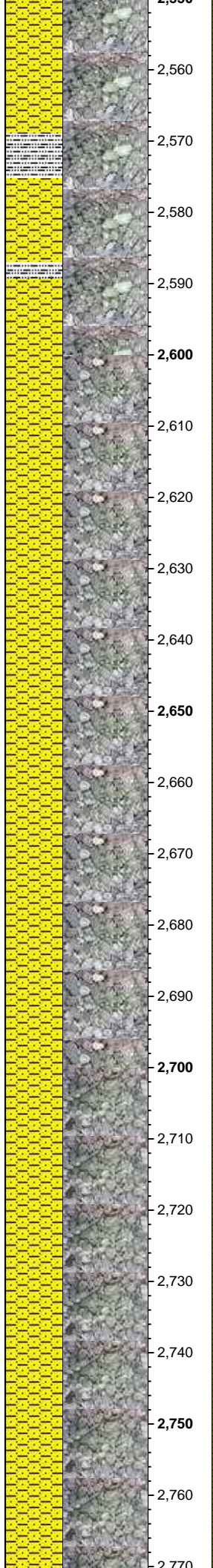
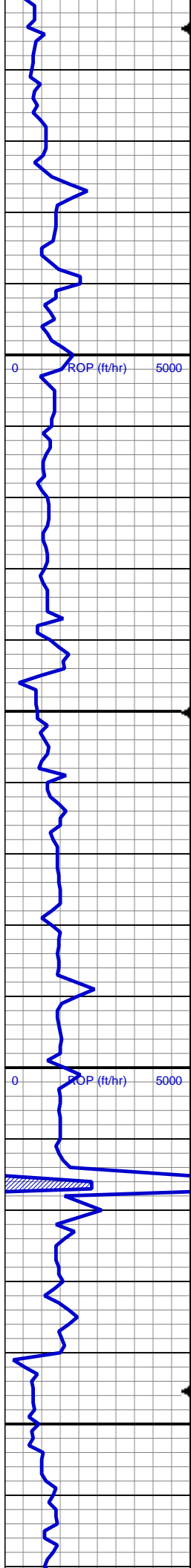
102

221u

220u

92

221u



SLTY SH: gy-dk gy, sb blkgy-sb pity, v sft, slty tex, arg cmt

MD: 2,591'
TVD: 2,587.25'
Inclination: 6.69 °
Azimuth: 189.8 °
VS: -70.22'

218u

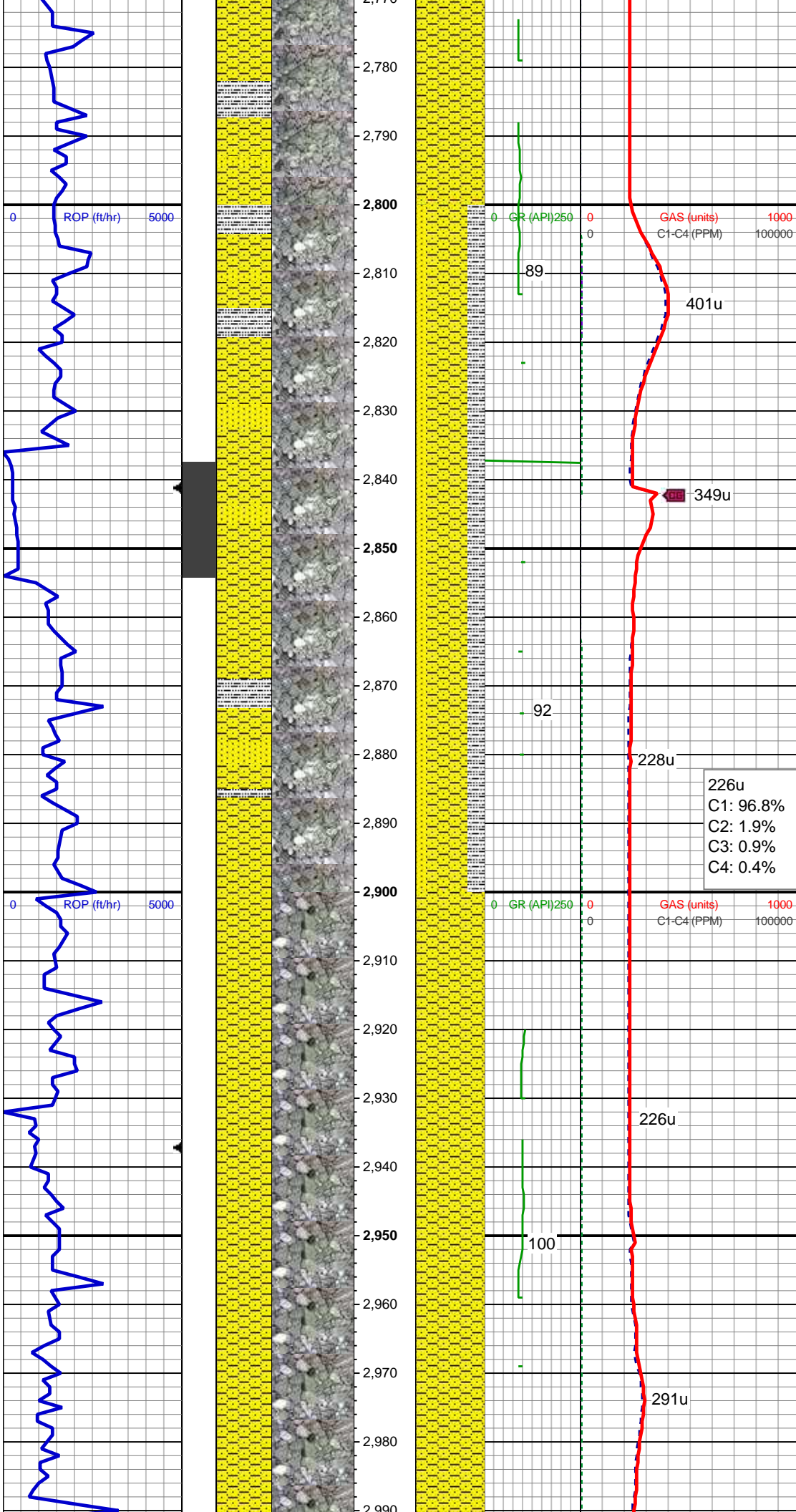
243u

221u
C1: 96.8%
C2: 1.9%
C3: 0.9%
C4: 0.4%

220u

244u

SHY SS: ltgy-gy, sb ang, v sft, v f gr, w rnd, mod srt, p por, arg cmt, occ lith frag, tr glauc



MD: 2,781'
TVD: 2,776.03'
Inclination: 6.36 °
Azimuth: 190.41 °
VS: -91.25'

WT IN 9.10+ / OUT 9.10+
VIS IN 42 / OUT 42

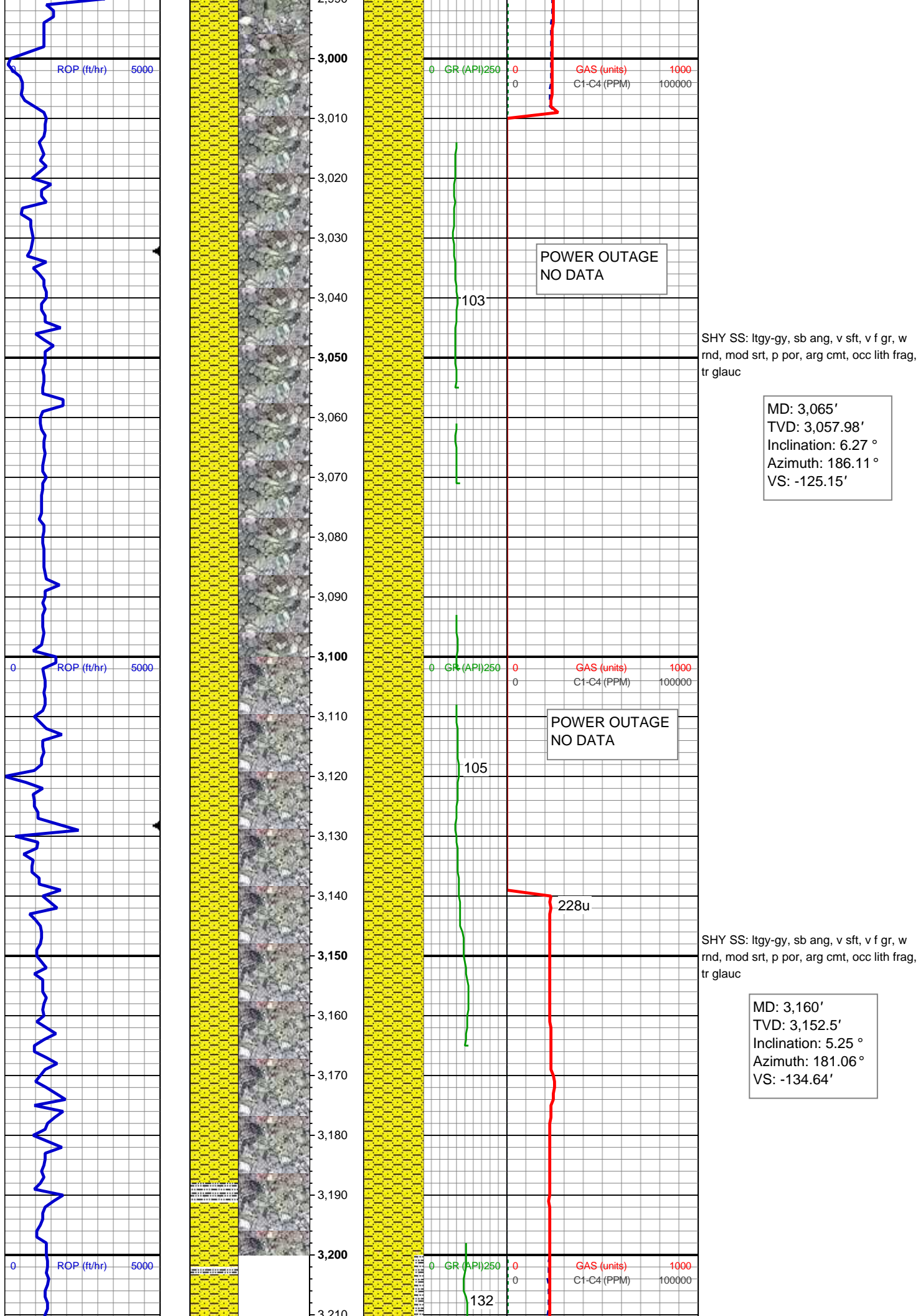
SHY SS: ltgy-gy, sb ang, v sft, v f gr, w
rnd, mod srt, p por, arg cmt
SLTY SH: gy-dk gy, sb blkly-sb plty, v sft,
sly tex, arg cmt
SS: ltgy-wh-op, sb ang, v fri, f gr - v f gr,
mod rnd, p srt, p por, arg cmt, occ glau,
tr lith frag

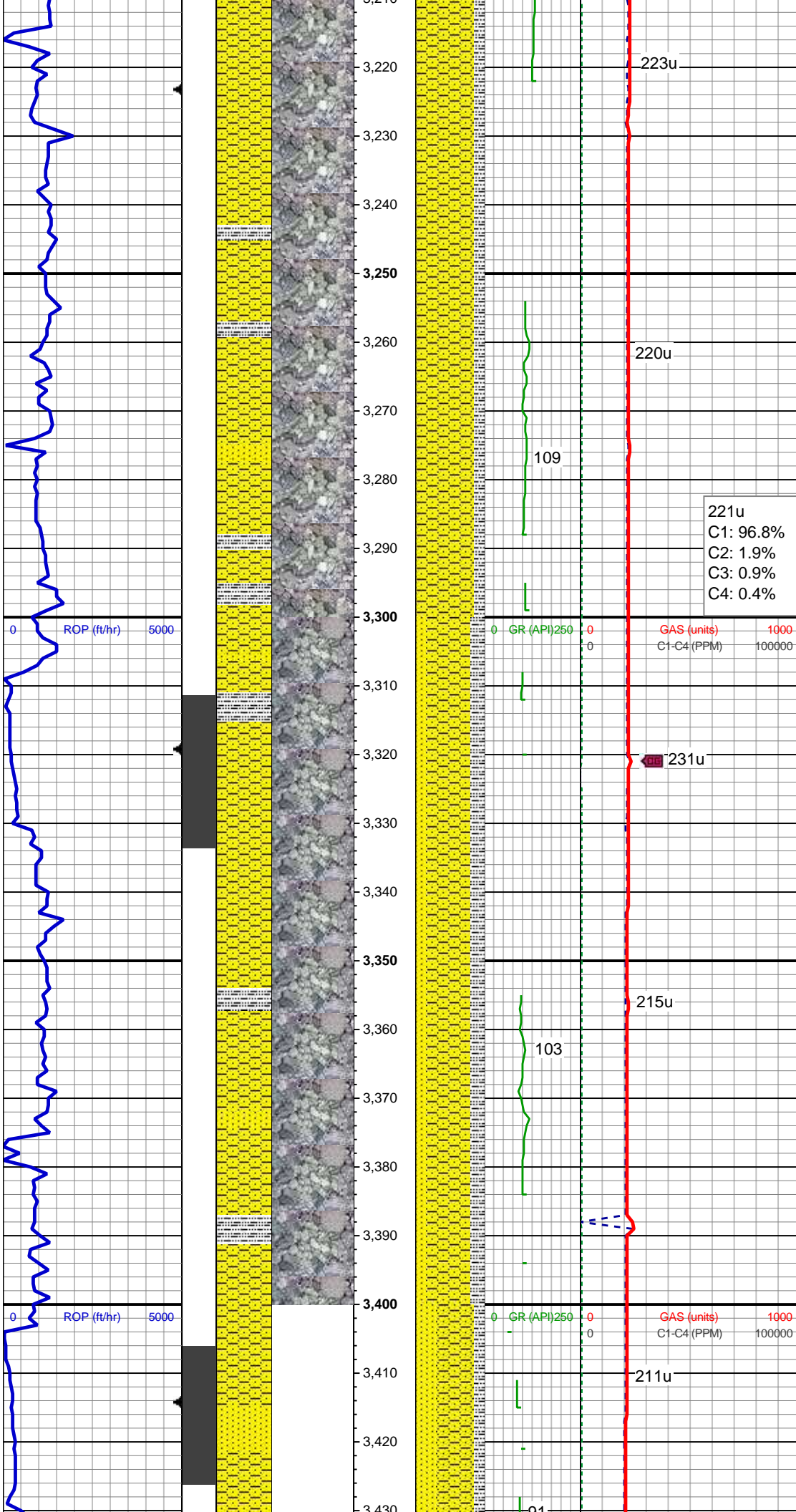
MD: 2,875'
TVD: 2,869.35'
Inclination: 7.45 °
Azimuth: 181.83 °
VS: -102.44'

226u
C1: 96.8%
C2: 1.9%
C3: 0.9%
C4: 0.4%

SHY SS: ltgy-gy, sb ang, v sft, v f gr, w
rnd, mod srt, p por, arg cmt, occ lith frag,
tr glauc

MD: 2,970'
TVD: 2,963.61'
Inclination: 6.92 °
Azimuth: 182.39 °
VS: -114.3'





SHY SS: ltgy-gy, sb ang, v sft, v f gr, w
rnd, mod srt, p por, arg cmt
SLTY SH: gy-dk gy, sb blkly-sb plty, v sft,
sly tex, arg cmt

MD: 3,255'
TVD: 3,247.18'
Inclination: 4.1 °
Azimuth: 182.67 °
VS: -142.37'

221u
C1: 96.8%
C2: 1.9%
C3: 0.9%
C4: 0.4%

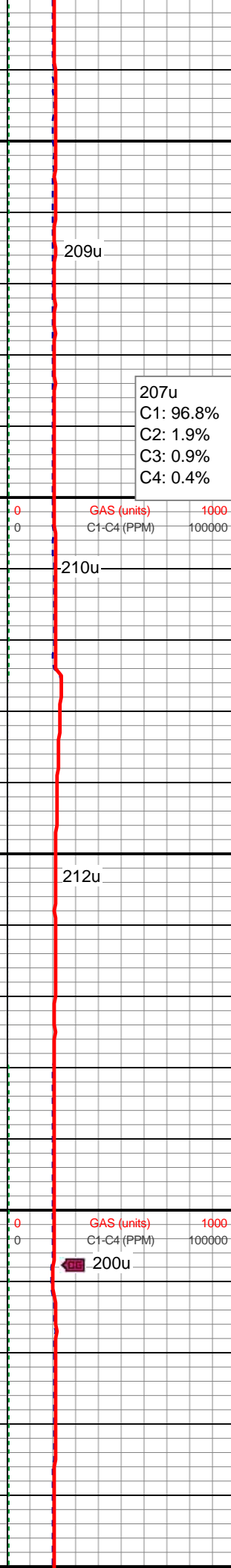
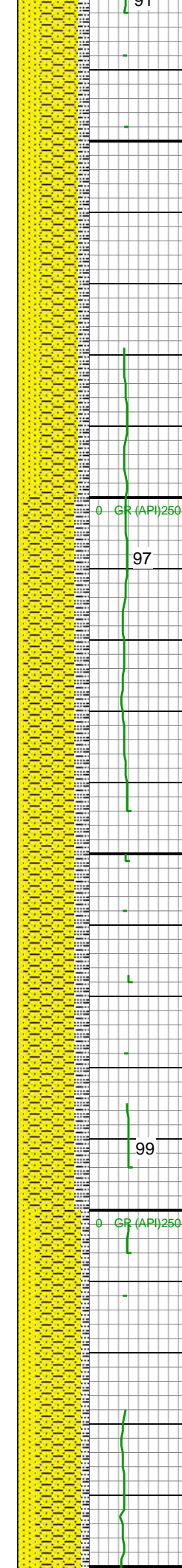
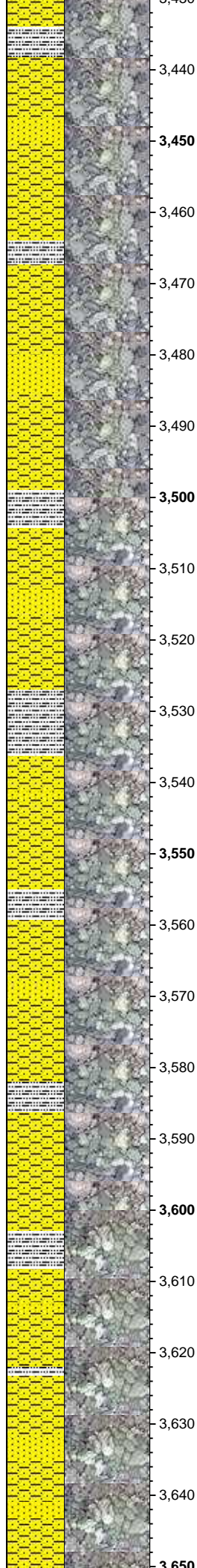
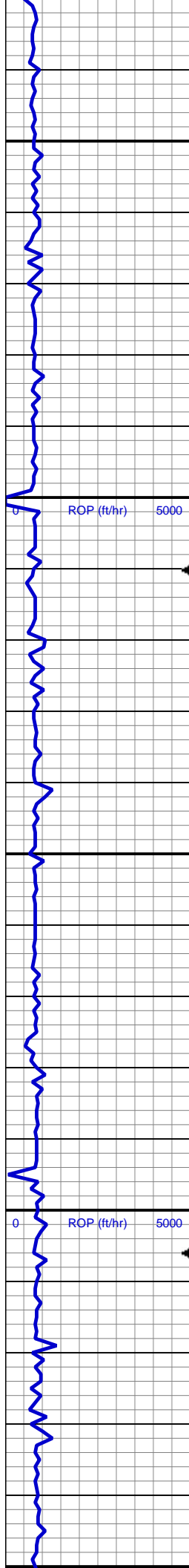
0 ROP (ft/hr) 5000
0 GR (API) 250 0 GAS (units) 1000
0 C1-C4 (PPM) 100000

SHY SS: ltgy-gy, sb ang, v sft, v f gr, w
rnd, mod srt, p por, arg cmt
SLTY SH: gy-dk gy, sb blkly-sb plty, v sft,
sly tex, arg cmt
SS: ltgy-wh-op, sb ang, v fri, f gr - v f gr,
mod rnd, p srt, p por, arg cmt, occ glau,
tr lith frag

MD: 3,350'
TVD: 3,341.86'
Inclination: 5.22 °
Azimuth: 187.31 °
VS: -150.04'

0 ROP (ft/hr) 5000
0 GR (API) 250 0 GAS (units) 1000
0 C1-C4 (PPM) 100000

MD: 3,445'
TVD: 3,436.35'
Inclination: 6.64 °



SHY SS: ltgy-gy, sb ang, v sft, v f gr, w
rnd, mod srt, p por, arg cmt
SS: ltgy-wh-op, sb ang, v fri, f gr - v f gr,
mod rnd, p srt, p por, arg cmt, occ glau,
tr lith frag
SLTY SH: gy-dk gy, sb blkly-sb plty, v sft,
sly tex, arg cmt

209u

207u
C1: 96.8%
C2: 1.9%
C3: 0.9%
C4: 0.4%

97

210u

212u

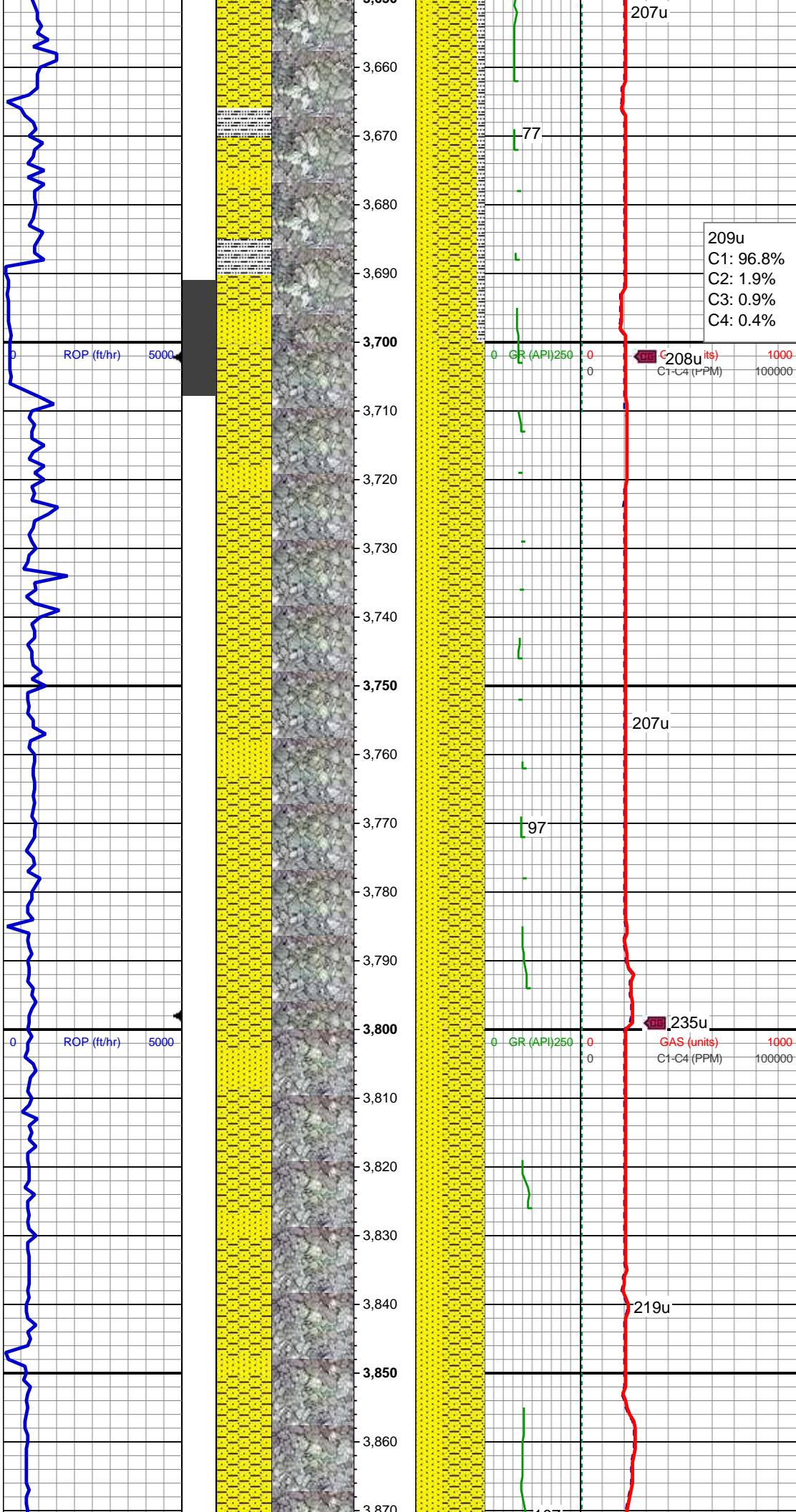
99

200u

MD: 3,540'
TVD: 3,530.73'
Inclination: 6.55 °
Azimuth: 194.59 °
VS: -170.08'

MD: 3,635'
TVD: 3,625.11'
Inclination: 6.56 °
Azimuth: 194.29 °
VS: -180.52'

SHY SS: ltgy-gy, sb ang, v sft, v f gr, w
rnd, mod srt, p por, arg cmt
SS: ltgy-wh-op, sb ang, v fri, f gr - v f gr,
mod rnd, p srt, p por, arg cmt, occ glau,



mod ma, p por, p por, arg cmt, occ glau,
abnt lith frag
SLTY SH: gy-dk gy, sb blkly-sb plty, v sft,
sfty tex, arg cmt

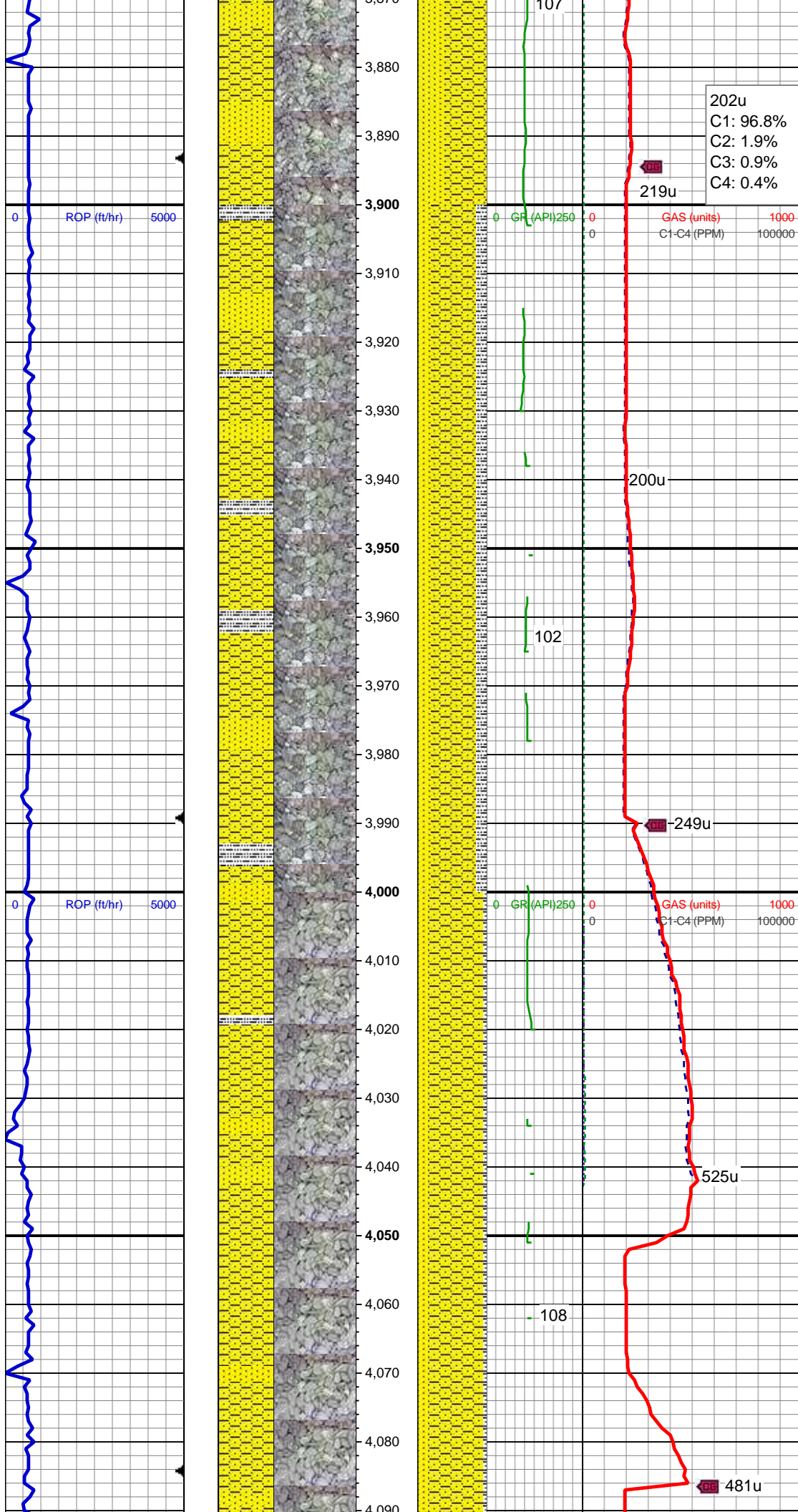
209u
C1: 96.8%
C2: 1.9%
C3: 0.9%
C4: 0.4%

MD: 3,730'
TVD: 3,719.45'
Inclination: 6.93 °
Azimuth: 185.73 °
VS: -191.44'

SHY SS: ltgy-gy, sb ang, v sft, v f gr, w
rnd, mod srt, p por, arg cmt
SS: ltgy-wh-op, sb ang, v fri, f gr - v f gr,
mod rnd, p srt, p por, arg cmt, occ glau,
abnt lith frag

MD: 3,825'
TVD: 3,813.82'
Inclination: 6.28 °
Azimuth: 185.37 °
VS: -202.28'

SHY SS: ltgy-gy, sb ang, v sft, v f gr, w
rnd, mod srt, p por, arg cmt
SS: ltgy-wh-op, sb ang, v fri, f gr - v f gr,
mod rnd, p srt, p por, arg cmt, occ glau,
abnt lith frag



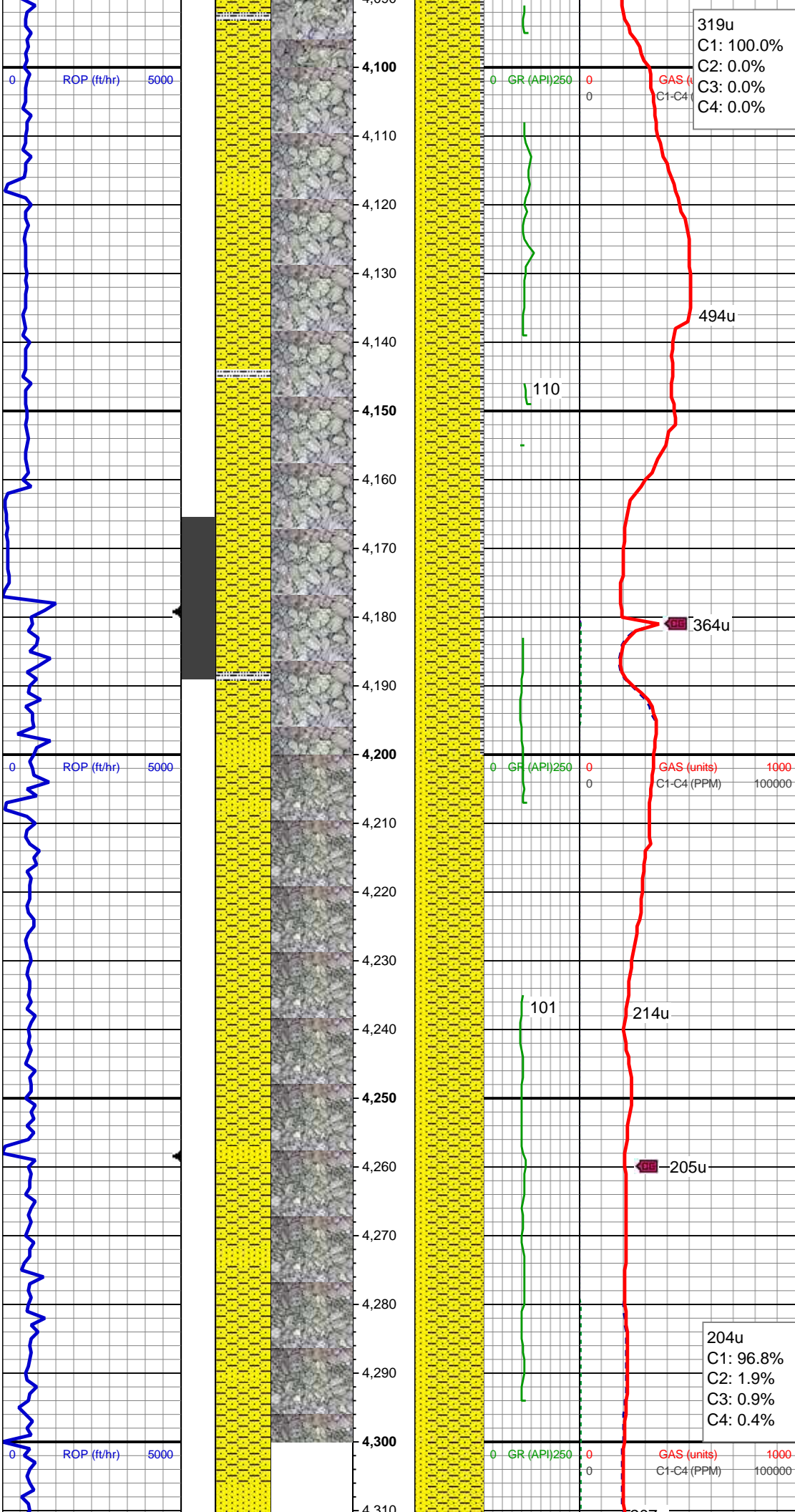
202u
C1: 96.8%
C2: 1.9%
C3: 0.9%
C4: 0.4%

MD: 3,920'
TVD: 3,908.3'
Inclination: 5.68 °
Azimuth: 186.55 °
VS: -212.09'

SHY SS: ltgy-gy, sb ang, v sft, v f gr, w
rnd, mod srt, p por, arg cmt
SS: ltgy-wh-op, sb ang, v fri, f gr - v f gr,
mod rnd, p srt, p por, arg cmt, occ glau,
abnt lith frag
SLTY SH: gy-dk gy, sb blkly-sb plty, v sft,
sly tex, arg cmt

MD: 4,014'
TVD: 4,001.89'
Inclination: 5.08 °
Azimuth: 177.55 °
VS: -220.86'

SHY SS: ltgy-gy, sb ang, v sft, v f gr, w
rnd, mod srt, p por, arg cmt
SS: ltgy-wh-op, sb ang, v fri, f gr - v f gr,
mod rnd, p srt, p por, arg cmt, occ glau,
abnt lith frag
SLTY SH: gy-dk gy, sb blkly-sb plty, v sft,
sly tex, arg cmt



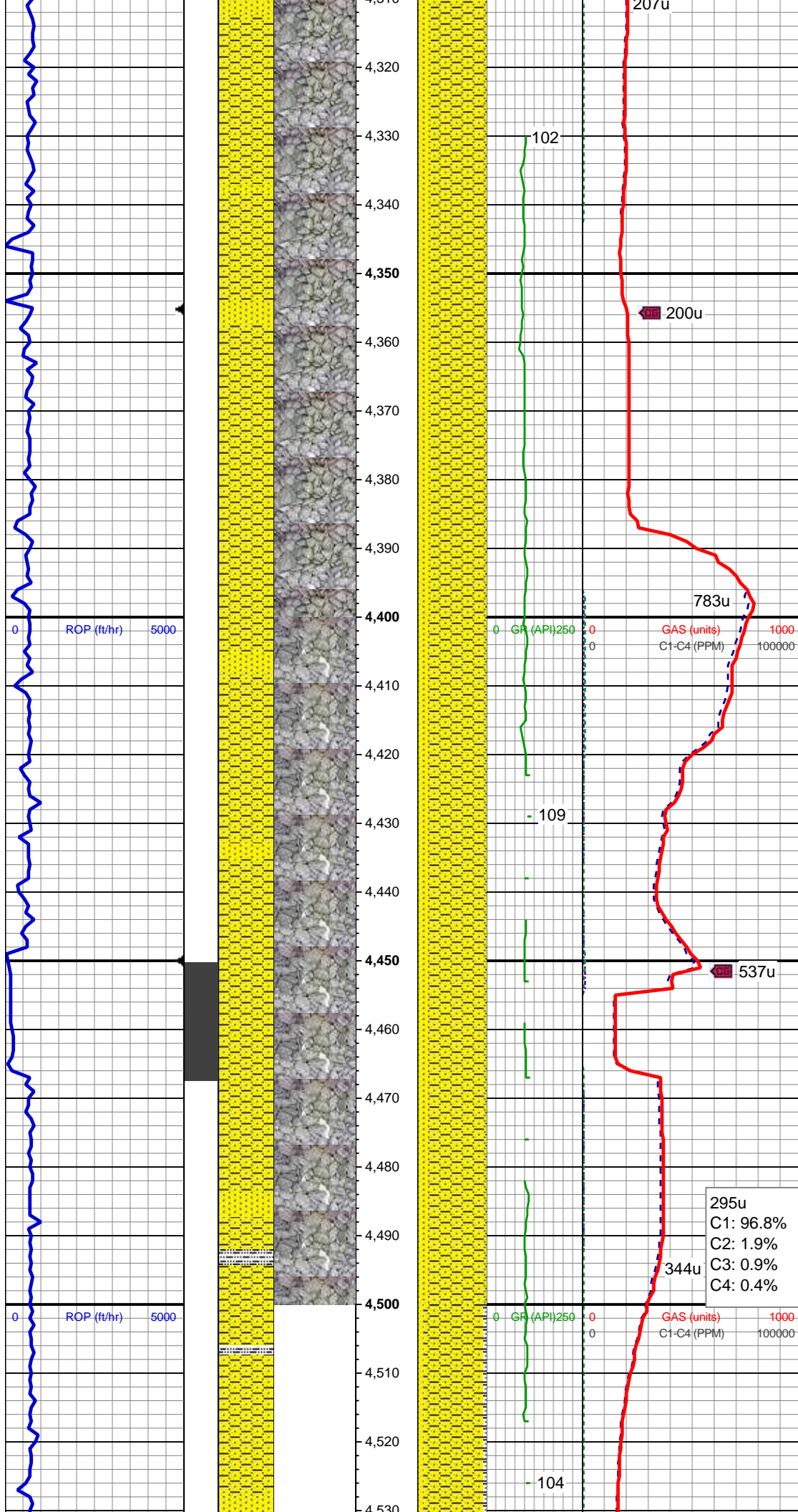
MD: 4,109'
TVD: 4,096.55'
Inclination: 4.66 °
Azimuth: 181.39 °
VS: -228.92'

SHY SS: ltgy-gy, sb ang, v sft, v f gr, w
rnd, mod srt, p por, arg cmt
SS: ltgy-wh-op, sb ang, v fri, f gr - v f gr,
mod rnd, p srt, p por, arg cmt, occ glau,
abnt lith frag
SLTY SH: gy-dk gy, sb blkly-sb plty, v sft,
sfty tex, arg cmt

MD: 4,204'
TVD: 4,191.33'
Inclination: 3.24 °
Azimuth: 158.03 °
VS: -235.3'

SHY SS: ltgy-gy, sb ang, v sft, v f gr, w
rnd, mod srt, p por, arg cmt
SS: ltgy-wh-op, sb ang, v fri, f gr - v f gr,
mod rnd, p srt, p por, arg cmt, occ glau,
abnt lith frag

204u
C1: 96.8%
C2: 1.9%
C3: 0.9%
C4: 0.4%



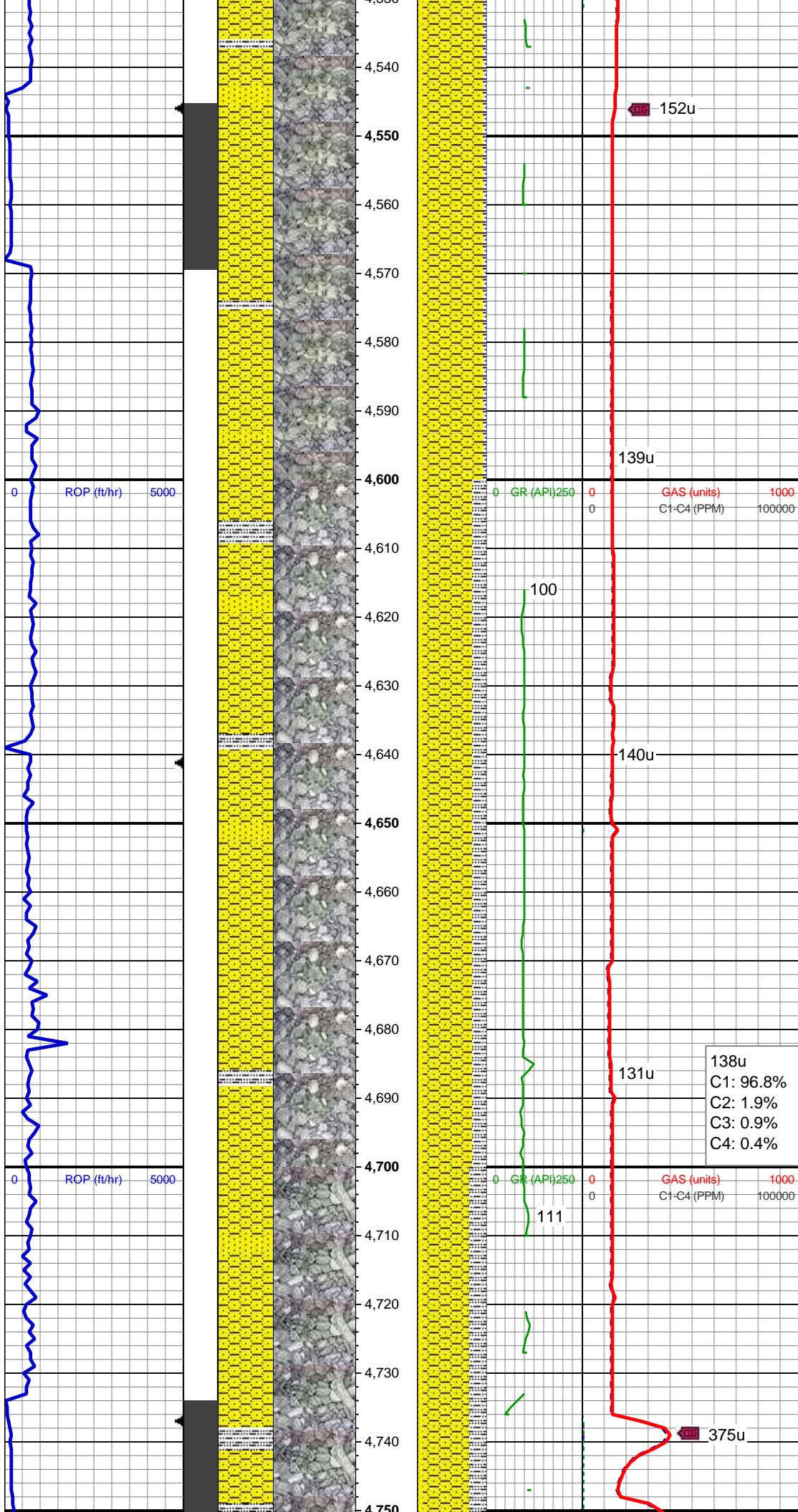
SHY SS: ltgy-gy, sb ang, v sft, v f gr, w
rnd, mod srt, p por, arg cmt
SS: ltgy-wh-op, sb ang, v fri, f gr - v f gr,
mod rnd, p srt, p por, arg cmt, occ glau,
abnt lith frag

MD: 4,394'
TVD: 4,381.02'
Inclination: 3.25 °
Azimuth: 148.36 °
VS: -244.96'

SHY SS: ltgy-gy, sb ang, v sft, v f gr, w
rnd, mod srt, p por, arg cmt
SS: ltgy-wh-op, sb ang, v fri, f gr - v f gr,
mod rnd, p srt, p por, arg cmt, occ glau,
abnt lith frag

MD: 4,489'
TVD: 4,475.92'
Inclination: 2.38 °
Azimuth: 105.41 °
VS: -247.84'

295u
C1: 96.8%
C2: 1.9%
C3: 0.9%
C4: 0.4%



SHY SS: ltgy-gy, sb ang, v sft, v f gr, w rnd, mod srt, p por, arg cmt
SS: ltgy-wh-op, sb ang, v fri, f gr - v f gr, mod rnd, p srt, p por, arg cmt, occ glau, abnt lith frag
SLTY SH: gy-dk gy, sb blkly-sb plty, v sft, slty tex, arg cmt

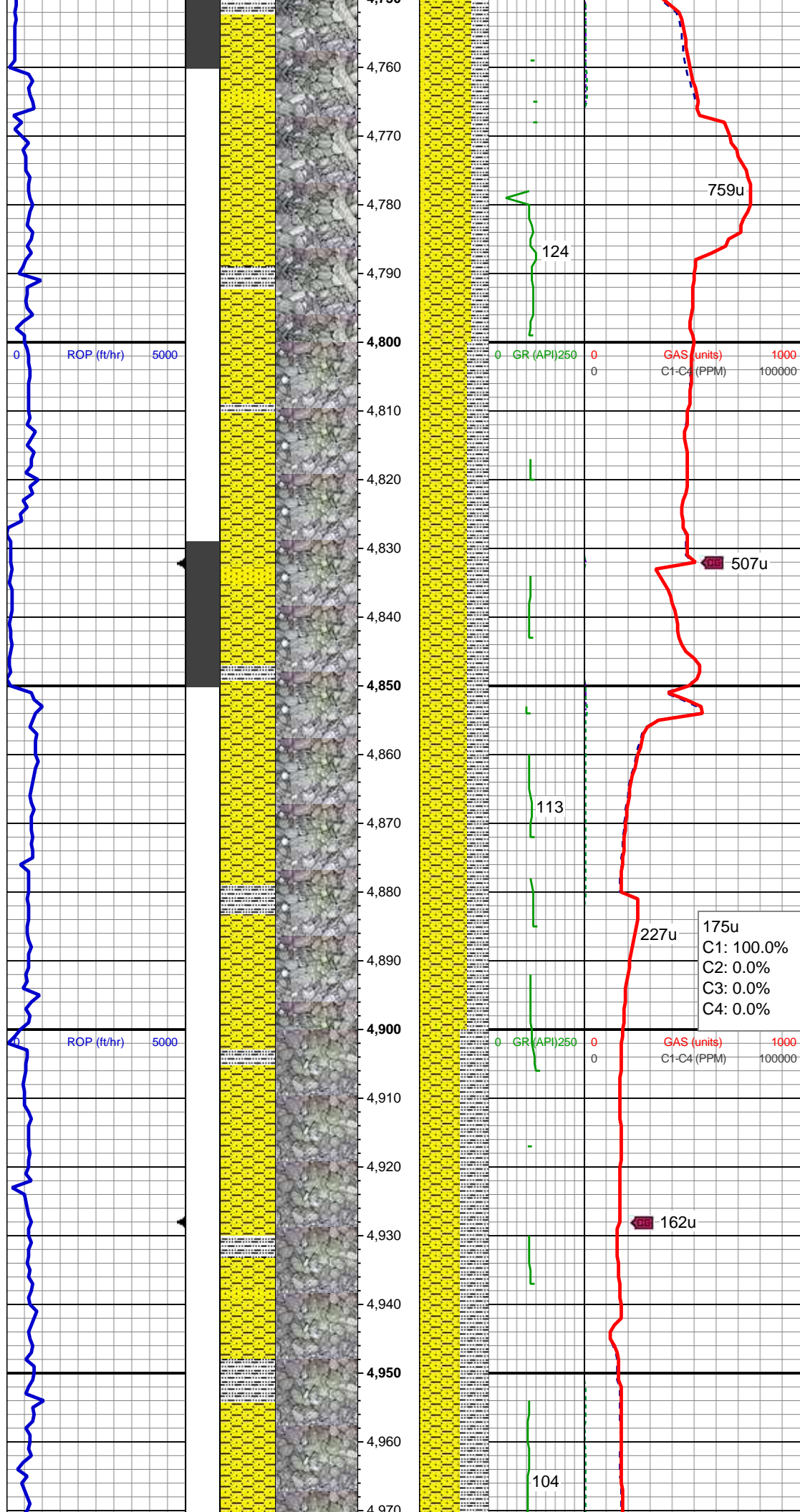
MD: 4,583'
TVD: 4,569.87'
Inclination: 1.45 °
Azimuth: 46.78 °
VS: -247.6'

SHY SS: ltgy-gy, sb ang, v sft, v f gr, w rnd, mod srt, p por, arg cmt
SLTY SH: gy-dk gy, sb blkly-sb plty, v sft, slty tex, arg cmt
SS: ltgy-wh-op, sb ang, v fri, f gr - v f gr, mod rnd, p srt, p por, arg cmt, occ glau, abnt lith frag

MD: 4,678'
TVD: 4,664.83'
Inclination: 2.02 °
Azimuth: 30.78 °
VS: -245.37'

138u
C1: 96.8%
C2: 1.9%
C3: 0.9%
C4: 0.4%

SHY SS: ltgy-gy, sb ang, v sft, v f gr, w rnd, mod srt, p por, arg cmt
SLTY SH: gy-dk gy, sb blkly-sb plty, v sft, slty tex, arg cmt



SS: ltgy-wh-op, sb ang, v fri, f gr - v f gr,
mod rnd, p srt, p por, arg cmt, occ glau,
abnt lith frag, rr pyr

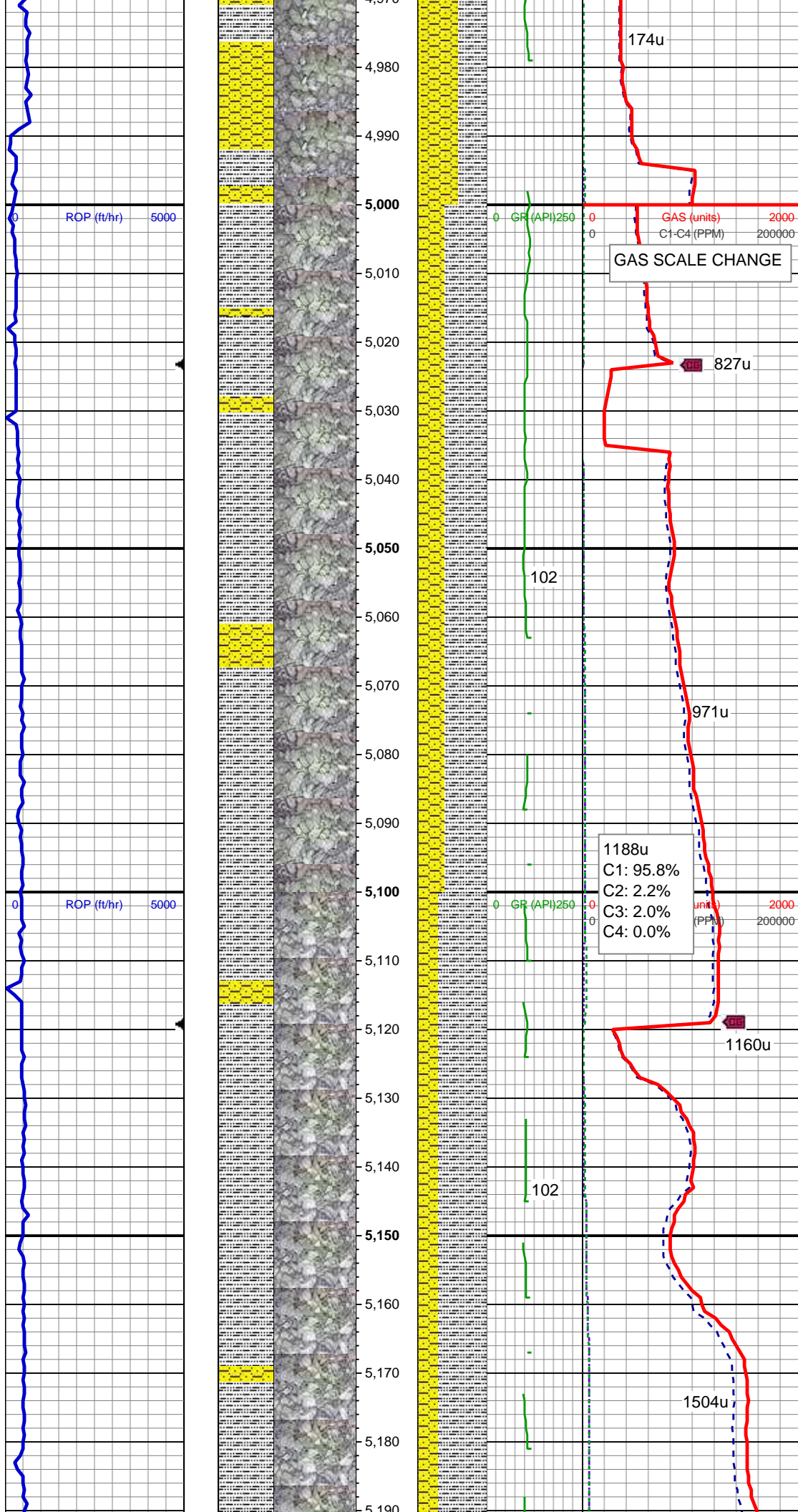
MD: 4,773'
TVD: 4,759.78'
Inclination: 2.3 °
Azimuth: 311.54 °
VS: -242.66'

SHY SS: ltgy-gy, sb ang, v sft, v f gr, w
rnd, mod srt, p por, arg cmt
SLTY SH: gy-dk gy, sb blkly-sb plty, v sft,
sfty tex, arg cmt
SS: ltgy-wh-op, sb ang, v fri, f gr - v f gr,
mod rnd, p srt, p por, arg cmt, occ glau,
abnt lith frag, rr pyr

MD: 4,868'
TVD: 4,854.75'
Inclination: 0.25 °
Azimuth: 301.62 °
VS: -241.25'

175u
C1: 100.0%
C2: 0.0%
C3: 0.0%
C4: 0.0%

SHY SS: ltgy-gy, sb ang, v sft, v f gr, w
rnd, mod srt, p por, arg cmt
SLTY SH: gy-dk gy, sb blkly-sb plty, v sft,
sfty tex, arg cmt
SS: ltgy-wh-op, sb ang, v fri, f gr - v f gr,
mod rnd, p srt, p por, arg cmt, occ glau,
abnt lith frag, rr pyr



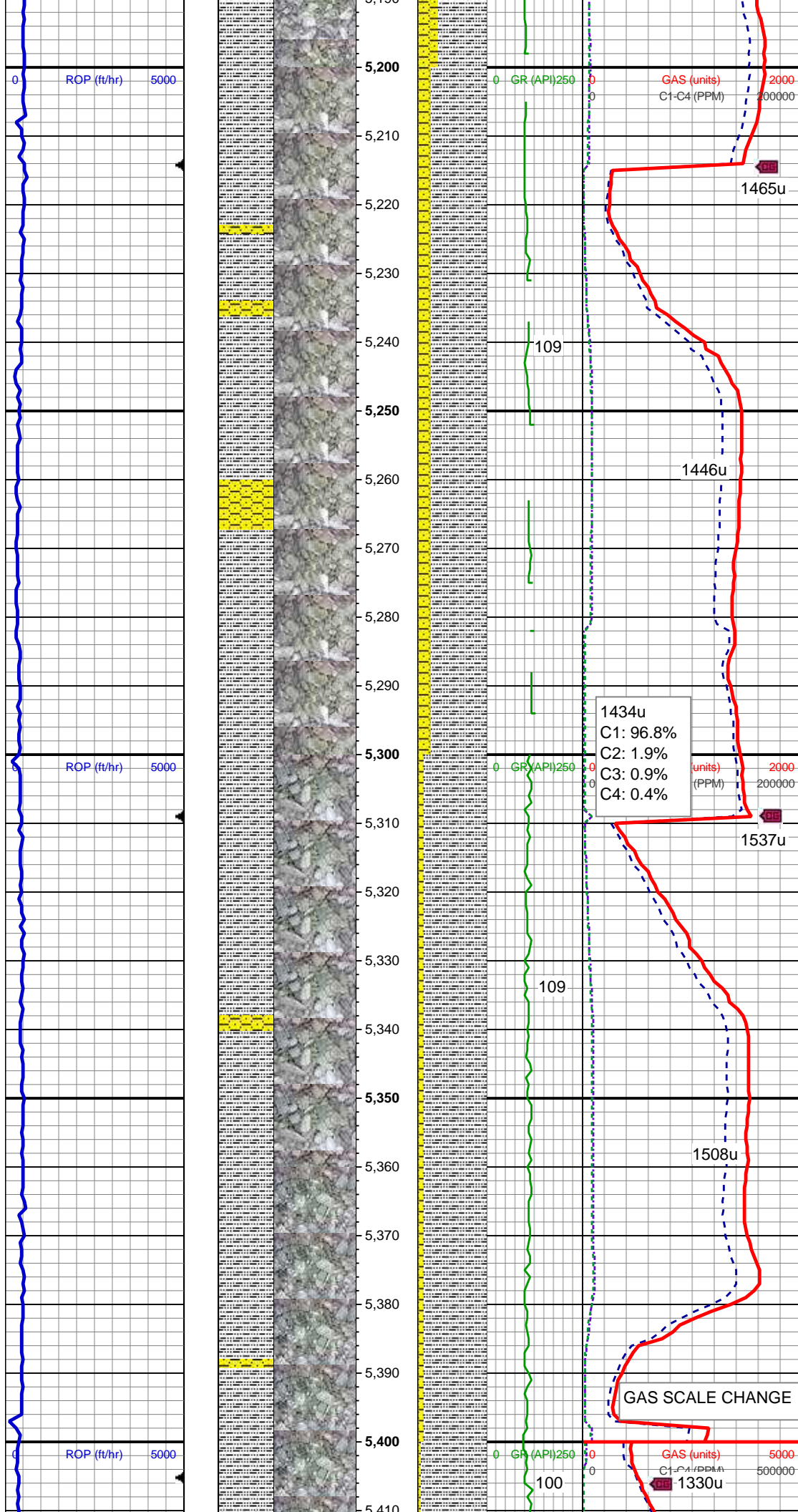
SLTY SH: gy-dk gy, sb blkly-sb plty, v sft,
sly tex, arg cmt, rr pyr
SHY SS: ltgy-gy, sb ang, v sft, v f gr, w
rnd, mod srt, p por, arg cmt

MD: 5,058'
TVD: 5,044.75'
Inclination: 0.44 °
Azimuth: 28.61 °
VS: -240.4'

1188u
C1: 95.8%
C2: 2.2%
C3: 2.0%
C4: 0.0%

MD: 5,152'
TVD: 5,138.74'
Inclination: 0.62 °
Azimuth: 64.65 °
VS: -239.88'

SLTY SH: gy-dk gy, sb blkly-sb plty, v sft,
sly tex, arg cmt, rr pyr
SHY SS: ltgy-gy, sb ang, v sft, v f gr, w
rnd, mod srt, p por, arg cmt



MD: 5,247'
TVD: 5,233.74'
Inclination: 0.5 °
Azimuth: 49.14 °
VS: -239.41'

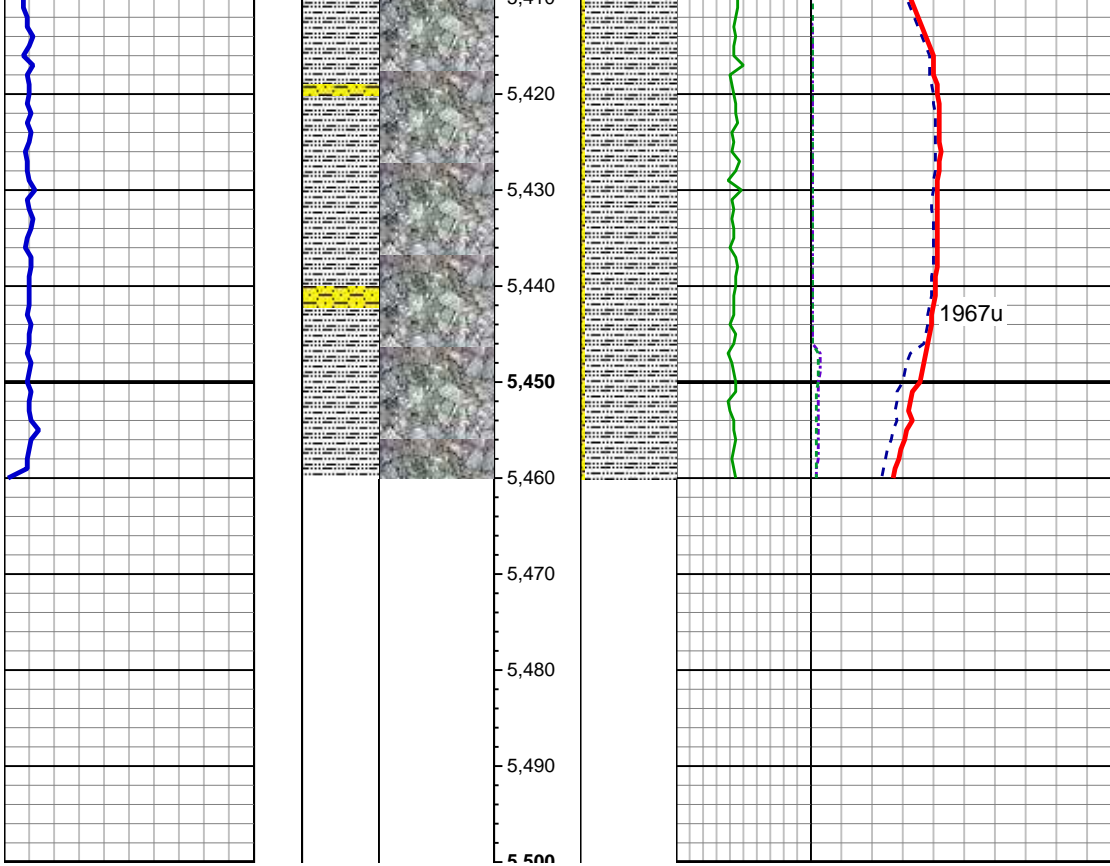
SLTY SH: gy-dk gy, sb blkly-sb plty, v sft,
sfty tex, arg cmt, rr pyr
SHY SS: ltgy-gy, sb ang, v sft, v f gr, w
rnd, mod srt, p por, arg cmt

MD: 5,342'
TVD: 5,328.73'
Inclination: 0.55 °
Azimuth: 46.57 °
VS: -238.83'

SLTY SH: gy-dk gy, sb blkly-sb plty, v sft,
sfty tex, arg cmt, rr pyr
SHY SS: ltgy-gy, sb ang, v sft, v f gr, w
rnd, mod srt, p por, arg cmt

MD: 5,405'
TVD: 5,391.73'
Inclination: 0.63 °
Azimuth: 37.23 °
VS: -232.22'

VS: -238.36'



TD @ 5460' MD
07/29/2014 @ 9:21 PM

LOG CONTINUES ON M PLOT
"BROOK LC28-74-1AHNC HORZ"