

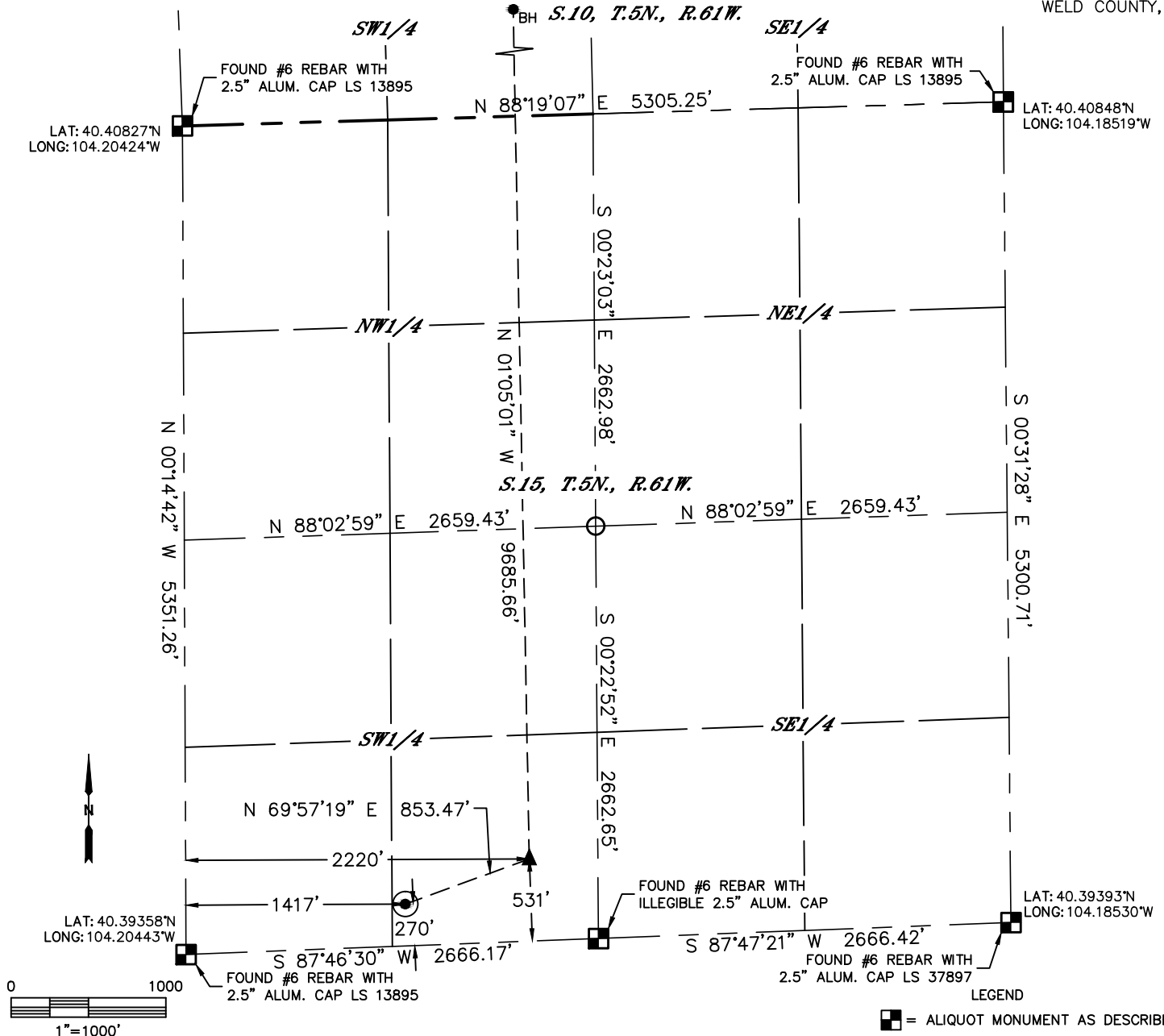


Lat40°, Inc. 6250 W. 10th Street, Unit 2, Greeley, CO 970-515-5294

WELL LOCATION CERTIFICATE

PRONGHORN O24-15-10XRLNB

SECTION: 15
TOWNSHIP: 5N
RANGE: 61W
6TH. P.M.
WELD COUNTY, CO



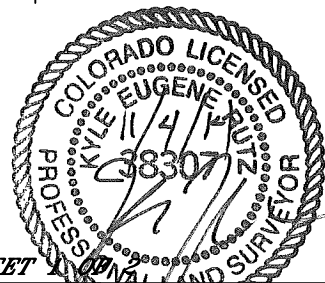
CLIENT: BONANZA CREEK ENERGY				LANDMAN: KEITH CAPLAN		
INSTRUMENT OPERATOR: WYATT HALL				SURVEY DATE: 9/30/2014		SURFACE USE: RANGELAND
SHL FOOTAGE	SHL LAT°	SHL LONG°	SHL PDOP	SHL ELEV	SHL 1/4/1/4	SHL S-T-R
270 FSL 1417 FWL	40.39442	-104.19934	2.4	4669	SESW	15-5-61

BHL FOOTAGE	BHL LAT°	BHL LONG°	BHL S-T-R	EP LAT°	EP LONG°	EP S-T-R
470 FNL 2240 FWL	40.42177	-104.19659	10-5-61	40.39519	-104.19644	15-5-61

NEAREST CULTURAL ITEMS	
BUILDING	5280'+
BUILDING UNIT	5280'+
HIGH OCCUPANCY BUILDING UNIT	5280'+
DESIGNATED OUTSIDE ACTIVITY AREA	5280'+
PUBLIC ROAD (COUNTY ROAD 89)	5280'+
ABOVEGROUND UTILITY	5280'+
RAILROAD	5280'+
PROPERTY LINE	±270'S

NOTE:

- Bearings shown are Grid Bearings of the Colorado State Plane Coordinate System, North Zone, North American Datum 1983. The lineal dimensions as contained herein are based upon the "U.S. Survey Foot."
- Distance to section lines measured at right angles
- Ground elevations are based on an observed GPS elevation (NAVD 1988 DATUM).
- Latitude and Longitude shown are (NAD 83 DATUM).
- IMPROVEMENTS: See LOCATION DRAWING for all visible improvements within 500' of disturbed area.
- This map does not represent a boundary survey



SHEET 1 OF 1
Kyle E. Rutz - Owner, Lat40°, Inc.
Colorado Licensed Professional Land Surveyor No. 38307
DATE: 10/27/2014
PROJECT#: 2012073

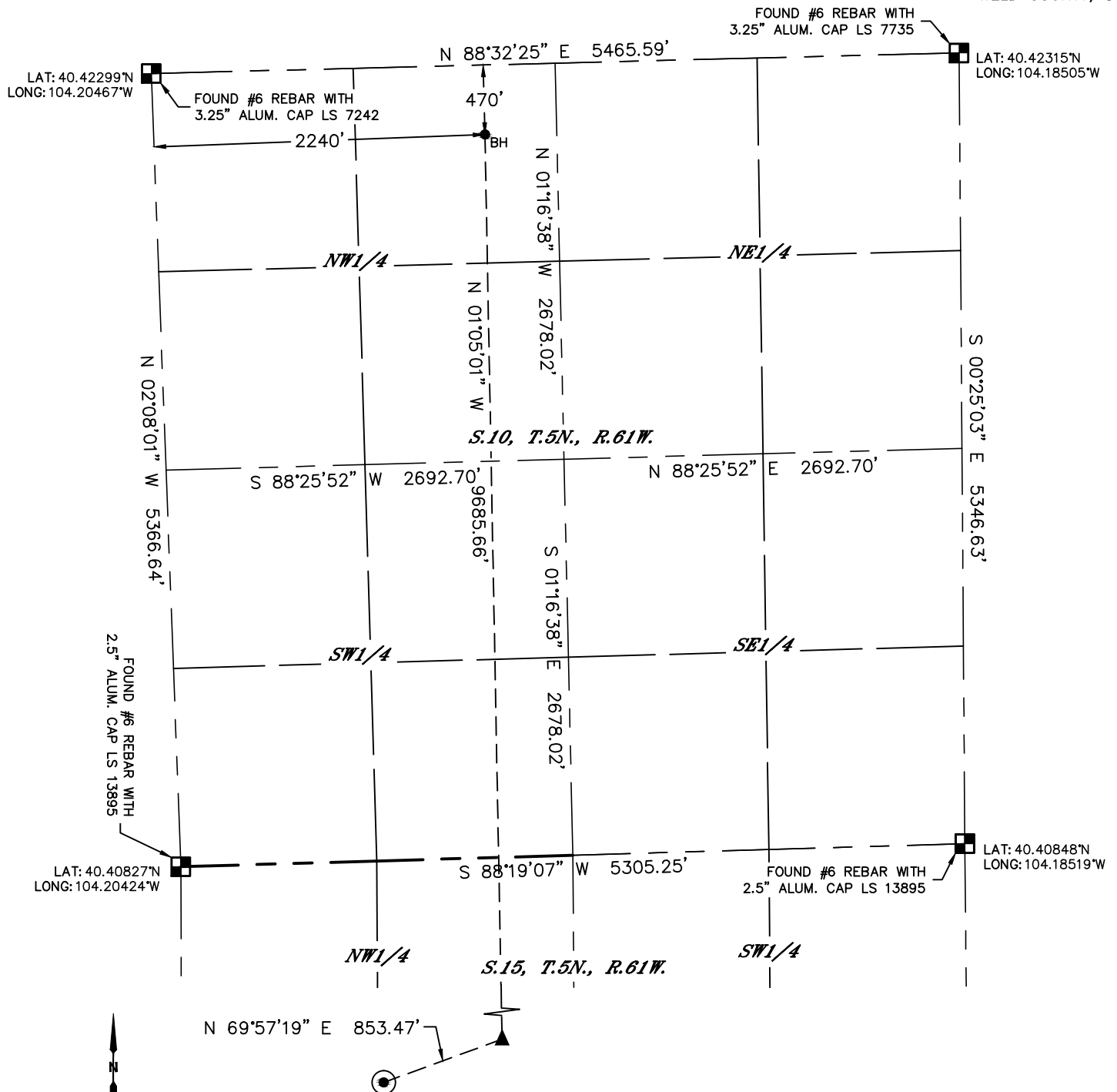


Lat40°, Inc. 6250 W. 10th Street, Unit 2, Greeley, CO 970-515-5294

WELL LOCATION CERTIFICATE

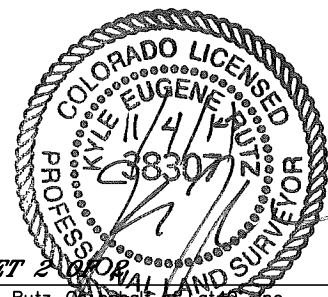
PRONGHORN O24-15-10XRLNB

SECTION: 15
TOWNSHIP: 5N
RANGE: 61W
6TH. P.M.
WELD COUNTY, CO



LEGEND

- = ALIQUOT MONUMENT AS DESCRIBED
- = CALCULATED POSITION
- ⊙ = SURFACE HOLE LOCATION (SHL)
- ▲ = ENTRY POINT LOCATION (EP)
- _{BH} = BOTTOM HOLE LOCATION (BHL)
- ⊕ = EXISTING WELL
- ⊖ = ABANDONED WELL



SHEET 2 OF 2

Kyle E. Rutz - Owner of Lat40°, Inc.
Colorado Licensed Professional Land Surveyor No. 38307
DATE: 10/27/2014
PROJECT#: 2012073