

1801 Broadway  
Suite 500  
Denver, Colorado 80202



Callie Fiddes  
Regulatory Technician  
Tel: 303.398.0550  
E-mail: cfiddes@gwogco.com

October 6, 2014

Colorado Oil and Gas Conservation Commission  
1120 Lincoln Street, Suite 801  
Denver, Colorado 80203

RE: **Proposed Wellbore Spacing Unit**  
Beierle KE 26-369HN

Niobrara New Drill  
Township 1 North, Range 66 West, 6<sup>th</sup> P.M.  
Section 26  
Weld County, Colorado

Dear Director:

Great Western Operating Company, LLC is planning to drill the above captioned well in accordance with the provisions of COGCC Rule 318A.e.

Great Western proposed wellbore spacing unit consists of:

- **W2E2,E2W2:Sec 26**
- **320 acres**

The 30 day notification time period has past and we have not received any objections to such well locations or proposed spacing unit, therefore Great Western hereby requests the Director to approve the above mentioned well. Great Western Operating Company, LLC respectfully requests that the COGCC review the enclosed map illustrating the proposed wellbore spacing unit.

Respectfully,

*Callie Fiddes*

Callie Fiddes  
Regulatory Technician  
Great Western Operating Company, LLC

**LEGEND:**

- = 90° SYMBOL
- = PROPOSED WELLHEAD.
- ◇ = ENTRY POINT
- = TARGET BOTTOM HOLE.
- ▲ = SECTION CORNERS LOCATED.

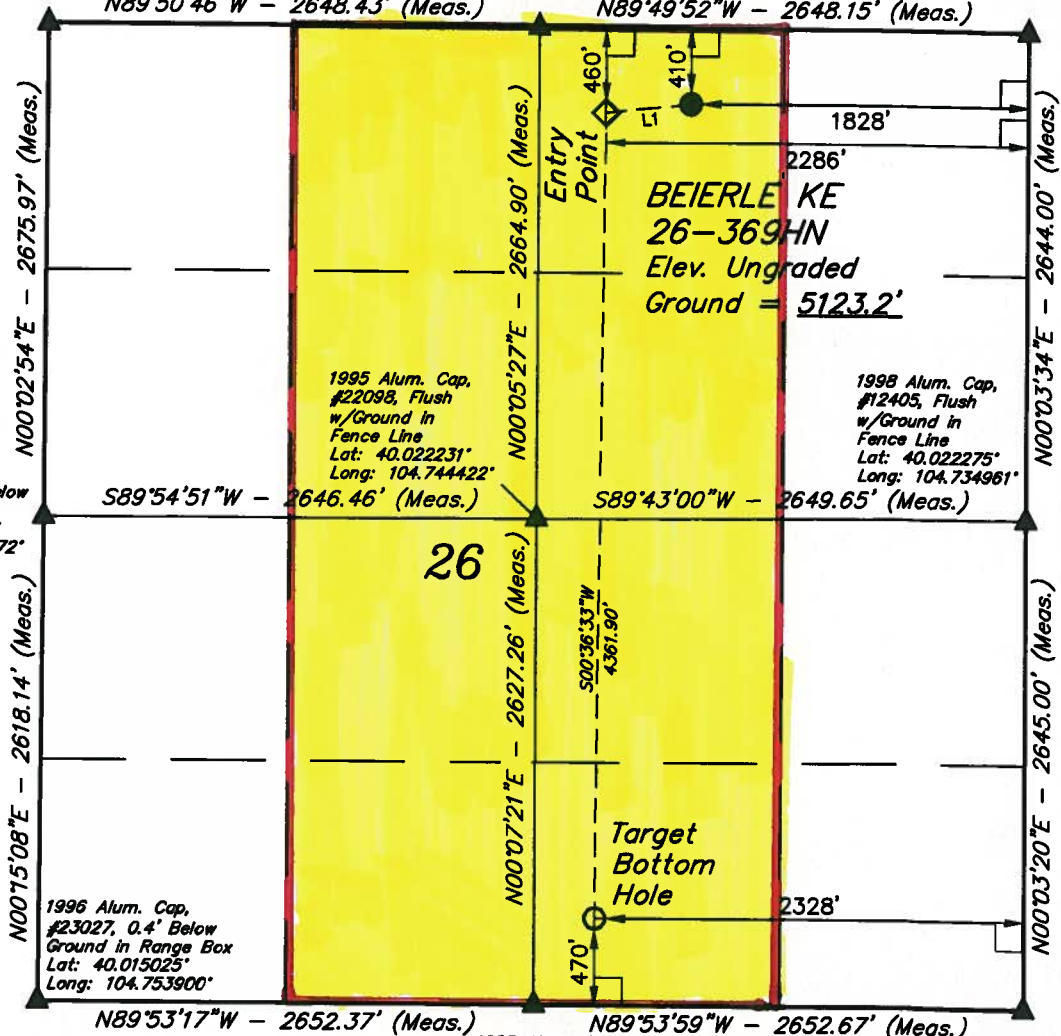
**T1N, R66W, 6th P.M.**

1997 Alum. Cap,  
#13155, 0.5' Below  
Ground in Center  
of Road  
Lat: 40.029558°  
Long: 104.753875°

Alum. Cap, #12330,  
0.4' Below Ground  
in Center of Road  
Lat: 40.029547°  
Long: 104.744417°

2002 Alum. Cap,  
#25636, 0.6' Below  
Ground in Center  
of Road  
Lat: 40.029533°  
Long: 104.734961°

| LINE TABLE |             |         |
|------------|-------------|---------|
| LINE       | DIRECTION   | LENGTH  |
| L1         | S83°56'06"W | 480.54' |



1991 Alum. Cap,  
#25937, 0.5' Below  
Ground  
Lat: 40.022214°  
Long: 104.753872°

1995 Alum. Cap,  
#22098, Flush  
w/Ground in  
Fence Line  
Lat: 40.022231°  
Long: 104.744422°

1998 Alum. Cap,  
#12405, Flush  
w/Ground in  
Fence Line  
Lat: 40.022275°  
Long: 104.734961°

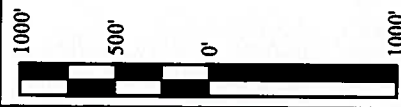
1996 Alum. Cap,  
#23027, 0.4' Below  
Ground in Range Box  
Lat: 40.015025°  
Long: 104.753900°

1998 Alum. Cap,  
#28656, 0.1' Below  
Ground in Range Box  
Lat: 40.015019°  
Long: 104.744431°

1984 Alum. Cap,  
1.0' Below Ground  
Lat: 40.015014°  
Long: 104.734961°

PDOP = 1.8

|  |  |
|--|--|
| <b>NAD 83 (TARGET BOTTOM HOLE)</b>     |  |
| LATITUDE = 40°00'58.71" (40.016308)    |  |
| LONGITUDE = 104°44'35.78" (104.743272) |  |
| <b>NAD 27 (TARGET BOTTOM HOLE)</b>     |  |
| LATITUDE = 40°00'58.77" (40.016325)    |  |
| LONGITUDE = 104°44'33.89" (104.742747) |  |
| <b>NAD 83 (ENTRY POINT)</b>            | <b>NAD 83 (SURFACE LOCATION)</b>       |
| LATITUDE = 40°01'41.82" (40.028283)    | LATITUDE = 40°01'42.30" (40.028417)    |
| LONGITUDE = 104°44'35.25" (104.743125) | LONGITUDE = 104°44'29.36" (104.741489) |
| <b>NAD 27 (ENTRY POINT)</b>            | <b>NAD 27 (SURFACE LOCATION)</b>       |
| LATITUDE = 40°01'41.88" (40.028300)    | LATITUDE = 40°01'42.36" (40.028433)    |
| LONGITUDE = 104°44'33.36" (104.742600) | LONGITUDE = 104°44'27.47" (104.740964) |



**CERTIFICATE**  
THIS IS TO CERTIFY THAT THE ABOVE PLAT WAS PREPARED FROM THE NOTES OF ACTUAL SURVEYS MADE BY ME OR UNDER MY SUPERVISION AND THAT THE SAME ARE TRUE AND CORRECT TO THE BEST OF MY KNOWLEDGE AND BELIEF.



**BASIS OF BEARINGS**  
BASIS OF BEARINGS IS A G.P.S. OBSERVATION  
**BASIS OF ELEVATION**

HUBBS TRIANGULATION STATION LOCATED IN THE NE 1/4 OF SECTION 21, T1N, R64W, 6th P.M., TAKEN FROM THE KEENESBURG, QUADRANGLE, COLORADO, WELD COUNTY, 7.5 MINUTE QUAD (TOPOGRAPHIC MAP) PUBLISHED BY THE UNITED STATES DEPARTMENT OF THE INTERIOR, GEOLOGICAL SURVEY. SAID ELEVATION IS MARKED AS BEING 5168 FEET.

**GREAT WESTERN OIL & GAS COMPANY**

**BEIERLE KE 26-369HN**  
**NW 1/4 NE 1/4, SECTION 26, T1N, R66W, 6th P.M.**  
**WELD COUNTY, COLORADO**

|                                |                      |
|--------------------------------|----------------------|
| SURVEYED BY: GREG WEIMER, C.J. | DATE: 08-13-14       |
| DRAWN BY: J.W.                 | DATE DRAWN: 08-21-14 |
| SCALE: 1" = 1000'              | REVISED: 09-05-14    |

**WELL LOCATION PLAT**



**UELS, LLC**  
Corporate Office \* 85 South 200 East  
Vernal, UT 84078 \* (435) 789-1017

