



Exploration and Production Temporary Abandonment

Wellname **SG 43-28**
Location **NESE 28 7S 96W**
Field **South Grand Valley**
County **Garfield, CO**
API **05-045-10959**
ELEV **5,079'**
Footages **2259 FSL 537 FEL**

Prepared By: Tony Franzone
office phone: 970-285-9377
cell phone: 970-589-1454

Revision Date:
7/16/2014

Casing: 9-5/8" 32.3#, H-40, - 1,130-ft
4-1/2" 11.6#, I-80, - 4,866-ft
Current Top of Cement: 2,175-ft CBL (HAL 05/19/06)

Purpose: Temporarily abandon well

Zone: All Perforations

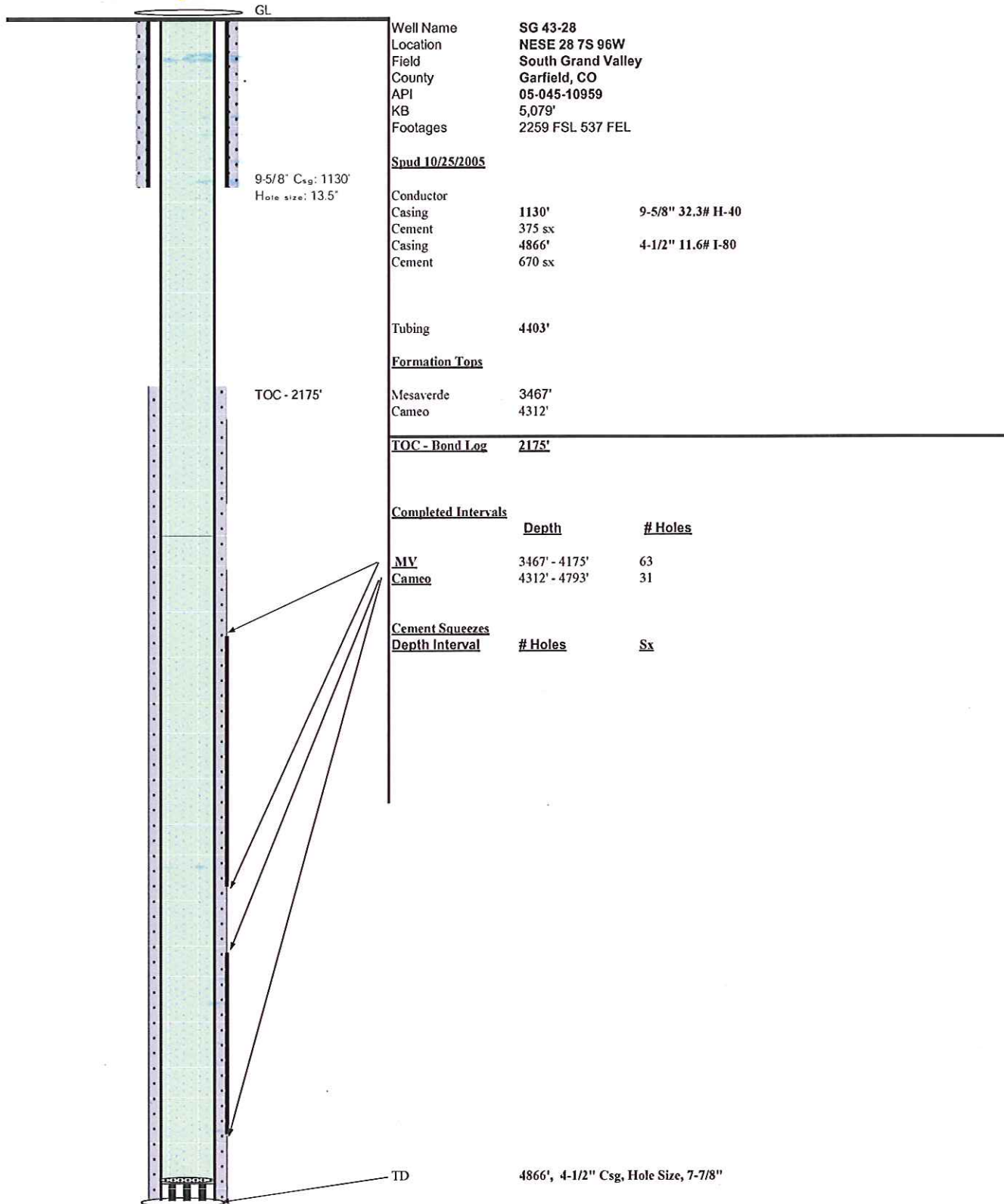
Existing Perforations:	Depth	Holes
	3467 - 3691	21
	3764 - 3867	14
	3913 - 4002	17
	4043 - 4175	11
	4312 - 4450	12
	4587 - 4793	19
		94
		Total

Proposed Procedure

- 1 MIRU service rig, kill well, cut 4-1/2" and 9-5/8" below ground level and fill 4-1/2" casing with packer fluid
- 2 Weld a tapped cap on 4-1/2"
- 3 Set retrievable bridge plug + 2 sks sand in 4-1/2" casing at 3420 ft.
- 4 Set another retrievable bridge plug + 2 sks sand in 4-1/2" casing at 3320 ft.
- 5 Pressure test to 500 psi for 15 mins
- 6 RD service rig, backfill cellar, wait for drilling rig to complete drilling operations on pad, and return well to production

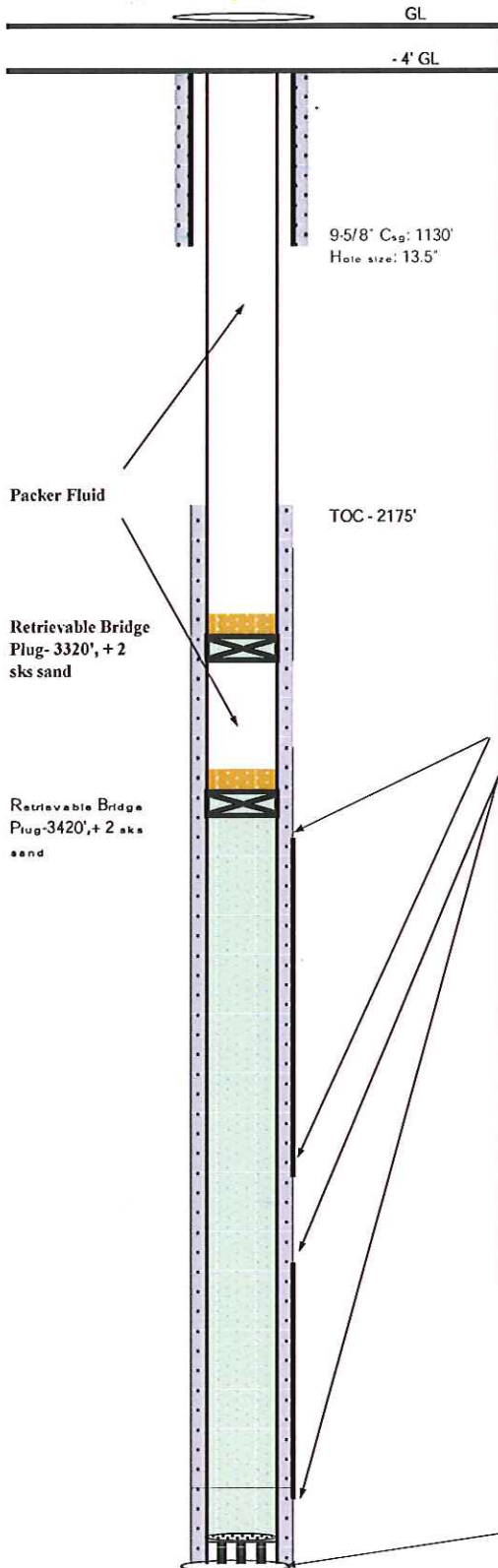


Exploration and Production





Exploration and Production



Well Name **SG 43-28**
 Location **NESE 28 7S 96W**
 Field **South Grand Valley**
 County **Garfield, CO**
 API **05-045-10959**
 KB **5,079'**
 Footages **2259 FSL 537 FEL**

Spud 10/25/2005

Conductor	1130'	9-5/8" 32.3# II-40
Casing	375 sx	
Cement	4866'	4-1/2" 11.6# I-80
Casing	670 sx	
Cement		

Tubing 4403'

Formation Tops

Mesaverde	3467'
Cameo	4312'

TOC - Bond Log 2175'

Completed Intervals

	<u>Depth</u>	<u># Holes</u>
<u>MY</u>	3467' - 4175'	63
<u>Cameo</u>	4312' - 4793'	31

4866', 4-1/2" Csg, Hole Size, 7-7/8"