

FRAM OPERATING LLC

Mansur 33-4-D

**Craig #6**

## **Post Job Summary**

### **Cement KOP**

Date Prepared: 6/24/2014  
Job Date: 6/13/2014

Submitted by: Tony Eschete - Cement Engineer

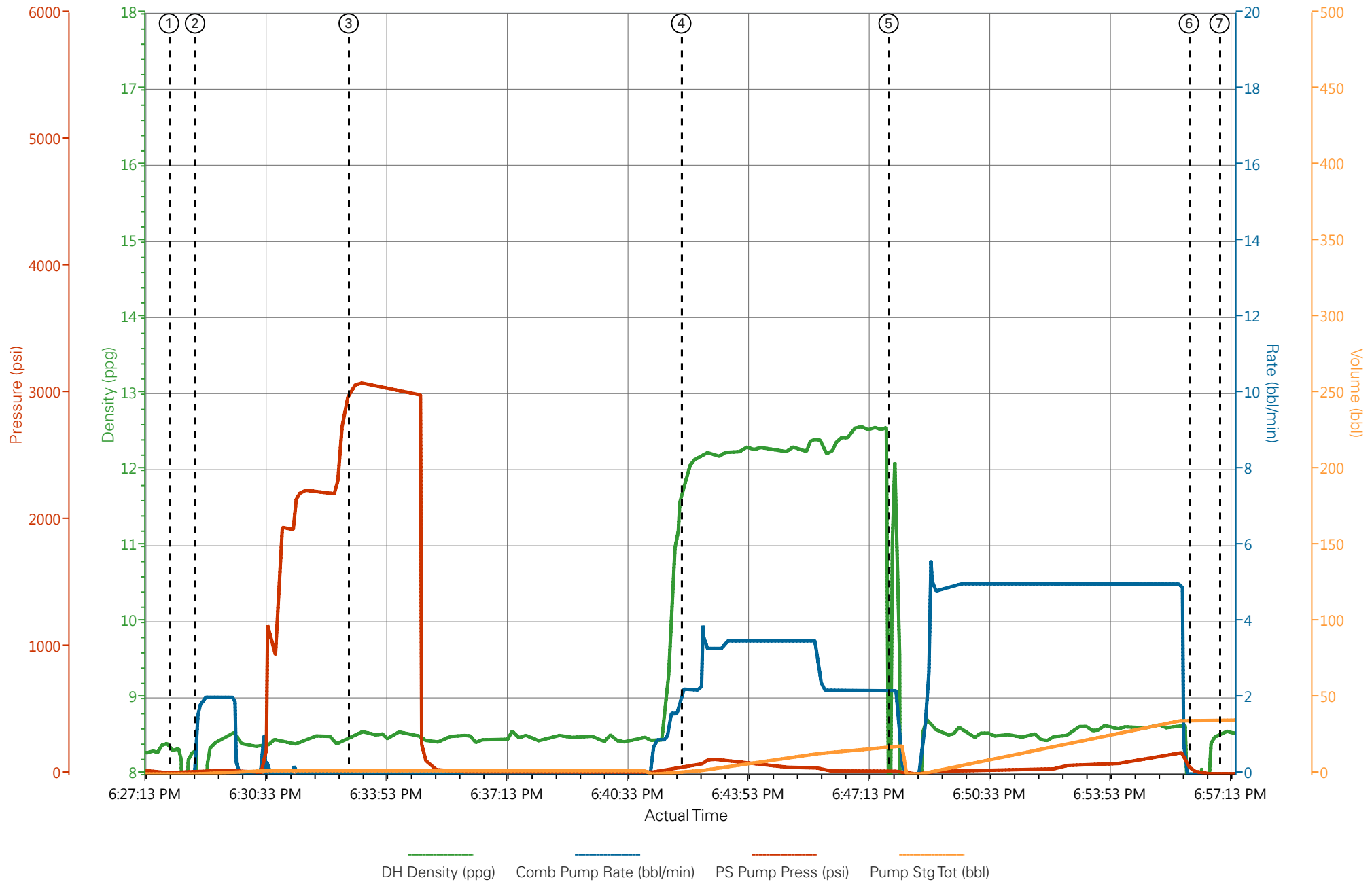
## The Road to Excellence Starts with Safety

Sold To #: 359500		Ship To #: 3534064		Quote #:		Sales Order #: 0901424002				
Customer: FRAM OPERATING LLC				Customer Rep: Arvid Mosnes						
Well Name: MANSUR		Well #: 33-4-D		API/UWI #: 05-077-10217-00						
Field: WHITEWATER		City (SAP): WHITEWATER		County/Parish: MESA		State: COLORADO				
Legal Description: SE NE-33-12S-97W-1838FNL-611FEL										
Contractor:				Rig/Platform Name/Num: Craig #6						
Job BOM: 7529										
Well Type: DIRECTIONAL OIL										
Sales Person: HALAMERICA\HB80977				Srvc Supervisor: Dustin Hyde						
Job										
Formation Name										
Formation Depth (MD)		Top		Bottom						
Form Type				BHST						
Job depth MD		3300ft		Job Depth TVD						
Water Depth				Wk Ht Above Floor						
Perforation Depth (MD)		From		To						
Well Data										
Description	New / Used	Size	ID	Weight	Thread	Grade	Top MD	Bottom MD	Top TVD	Bottom TVD
Fluid Data										
Stage/Plug #: 1										
Fluid #	Stage Type	Fluid Name	Qty	Qty UoM	Mixing Density lbm/gal	Yield ft3/sack	Mix Fluid Gal	Rate bbl/min	Total Mix Fluid Gal	
1	PlugCem #1	PLUGCEM (TM) SYSTEM	150	sack	12.3	2.21	12.8	3.5	10.95	
10.90 Gal		FRESH WATER								
Fluid #	Stage Type	Fluid Name	Qty	Qty UoM	Mixing Density lbm/gal	Yield ft3/sack	Mix Fluid Gal	Rate bbl/min	Total Mix Fluid Gal	
2	Displacement	Displacement	43.1	bbl	8.7			5.0		
Fluid #	Stage Type	Fluid Name	Qty	Qty UoM	Mixing Density lbm/gal	Yield ft3/sack	Mix Fluid Gal	Rate bbl/min	Total Mix Fluid Gal	
3	PlugCem #2	PLUGCEM (TM) SYSTEM	295	sack	17	0.99	3.77	2.7	3.77	
3.76 Gal		FRESH WATER								
Cement Left In Pipe		Amount				Reason		Shoe Joint		
Comment										

## 3.1 Job Event Log

Type	Seq. No.	Activity	Date	Time	Source	DH Density (ppg)	Comb Pump Rate (bbl/min)	PS Pump Press (psi)	Pump Stg Tot (bbl)	Comment
Event	1	Start Job	6/13/2014	18:27:58	COM5					O/L 16:00 TP 3300, 250' Plug, 4.5" 16.6 Dp
Event	2	Prime Pumps	6/13/2014	18:28:41	COM5	8.7	1.50	9.00	0.1	Rig Supplied Mud 8.7 Ppg
Event	3	Test Lines	6/13/2014	18:32:55	COM5					Pressure Held
Event	4	Pump Cement	6/13/2014	18:42:07	COM5	12.3	3.5	102	18.6	47 SKS, 12.8 PPG, 2.21 Yield, 12.8 Gal/Sk
Event	5	Pump Displacement	6/13/2014	18:47:51	COM5	8.7	5.0	175	43.1	Rig Supplied Mud
Event	6	Shutdown	6/13/2014	18:56:09	USER					Turned Over To Rig To Pull Pipe and Circulate
Event	7	End Job	6/13/2014	18:57:00	COM5					Wait For KOP
Event	8	Start Job	6/13/2014	21:03:52	COM5					TP 1400', 500' KOP, 4.5" DP
Event	9	Prime Pumps	6/13/2014	21:04:32	USER	8.7	2.0	0	2.0	Rig Supplied Mud 8.7 ppg
Event	10	Test Lines	6/13/2014	21:07:47	USER			3010.00		Pressure Held
Event	11	Pump Cement	6/13/2014	21:16:07	COM5	17	2.7	66	37.2	210 Sks, 17 Ppg, .99 Yield, 3.77 Gal/Sk
Event	12	Pump Displacement	6/13/2014	21:31:01	COM5	8.7	5.0	44	12.2	Rig Supplied Mud
Event	13	Shutdown	6/13/2014	21:33:11	USER					Turned Over To Rig To Pull Pipe
Event	14	End Job	6/13/2014	21:34:25	COM5					Thank You For Using Halliburton Energy Services

# FRAM MANSUR 33-4D PLUG #1



① Start Job 8.32;0;10;0    ③ Test Lines 8.47;0;3046;2.2    ⑤ Pump Displacement 10.42;2.2;20;17.9    ⑦ End Job 8.56;0;2;35.4  
 ② Prime Lines 0.77;1.5;9;0.1    ④ Pump Cement 11.8;2.2;64;1.2    ⑥ Shutdown 6.98;0;33;35.4

▼ **HALLIBURTON** | iCem® Service

Created: 2014-06-13 16:59:50, Version: 3.0.121

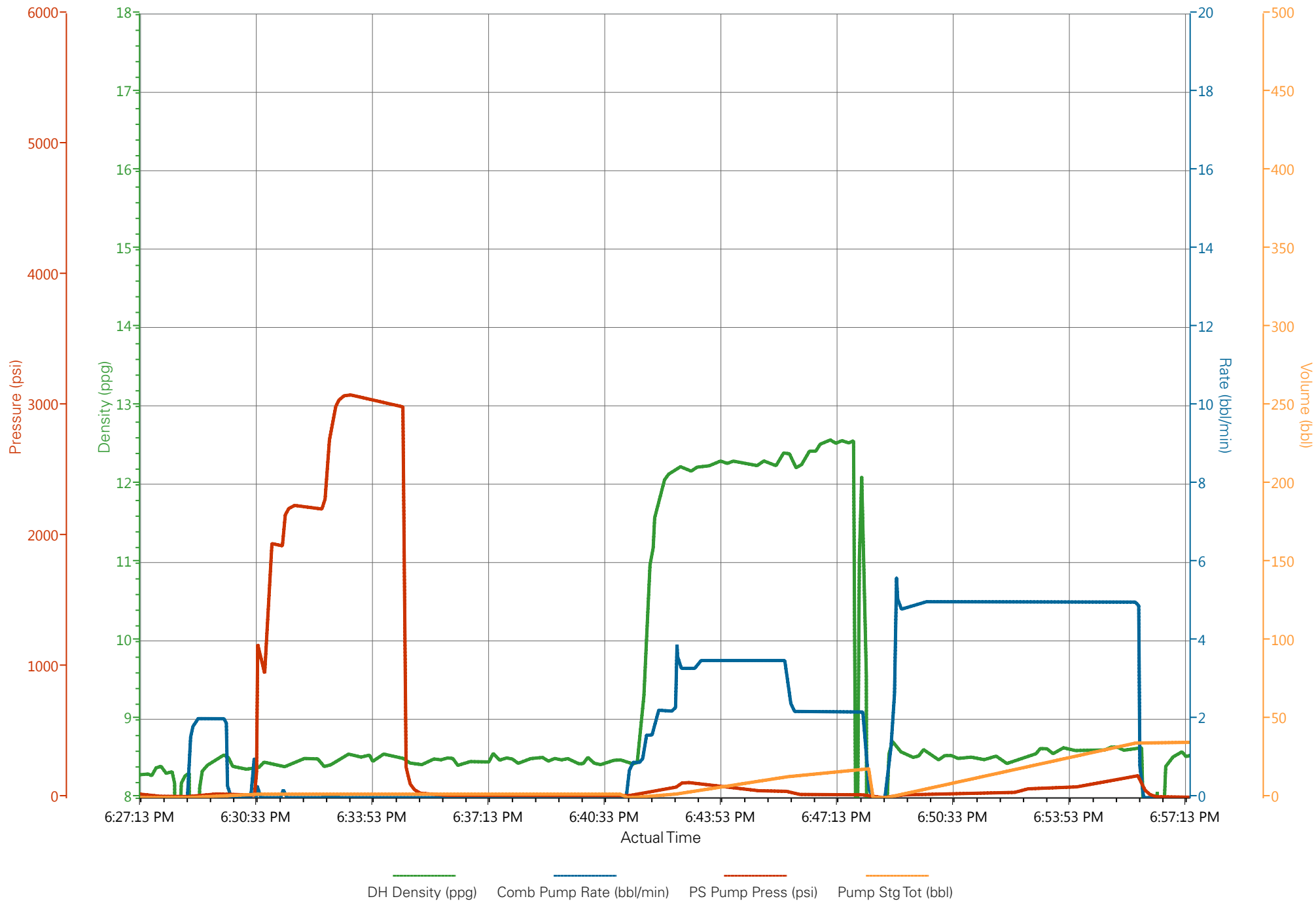
Edit

Customer: FRAM OPERATING LLC  
 Representative: ARVID MOSNES

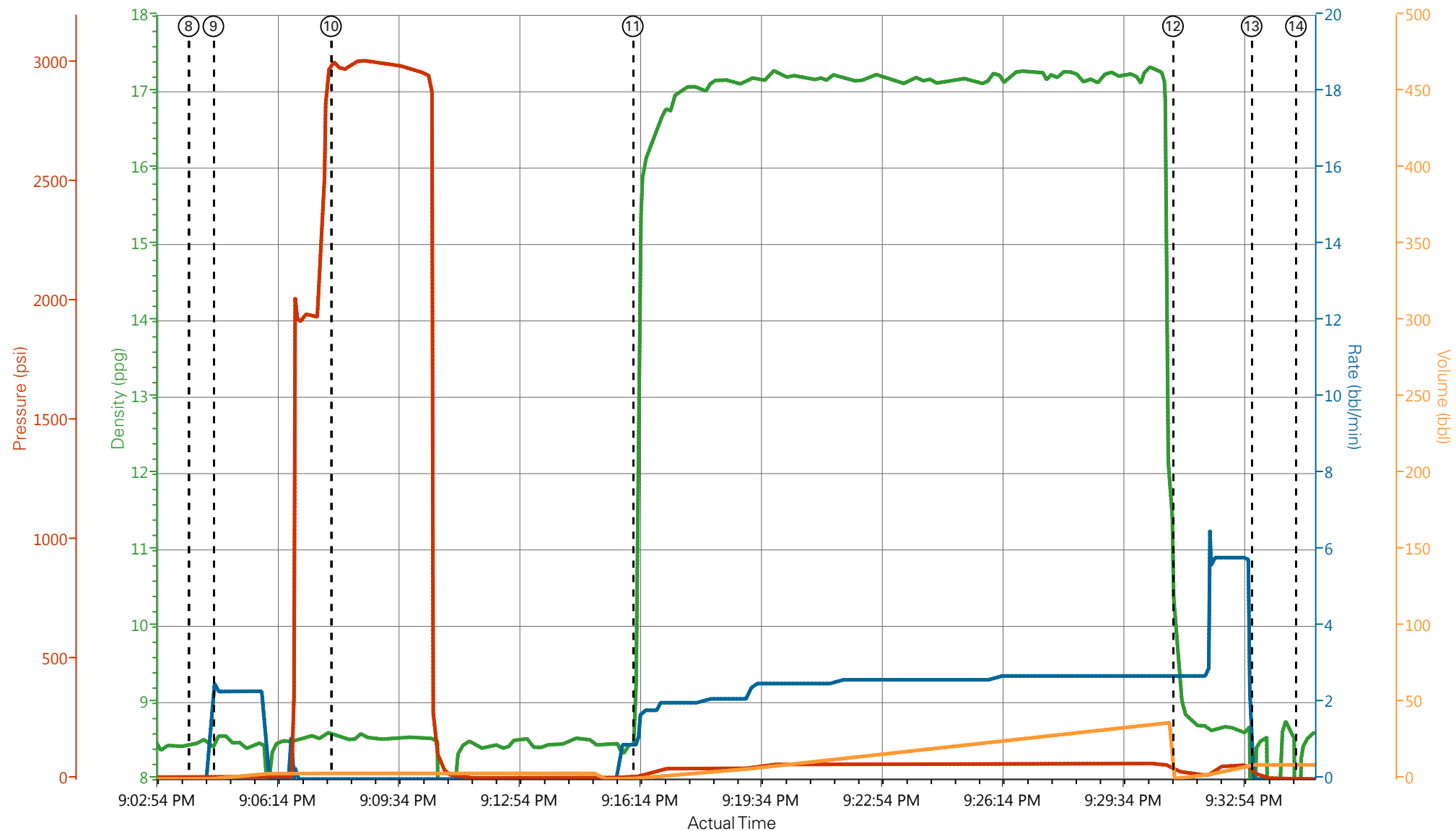
Job Date: 6/13/2014 5:04:37 PM  
 Sales Order #: 901424002

Well: Mansur 33-4D  
 ELITE #3: DUSTIN HYDE / BRENT BANKS

# FRAM MANSUR 33-4D PLUG #1



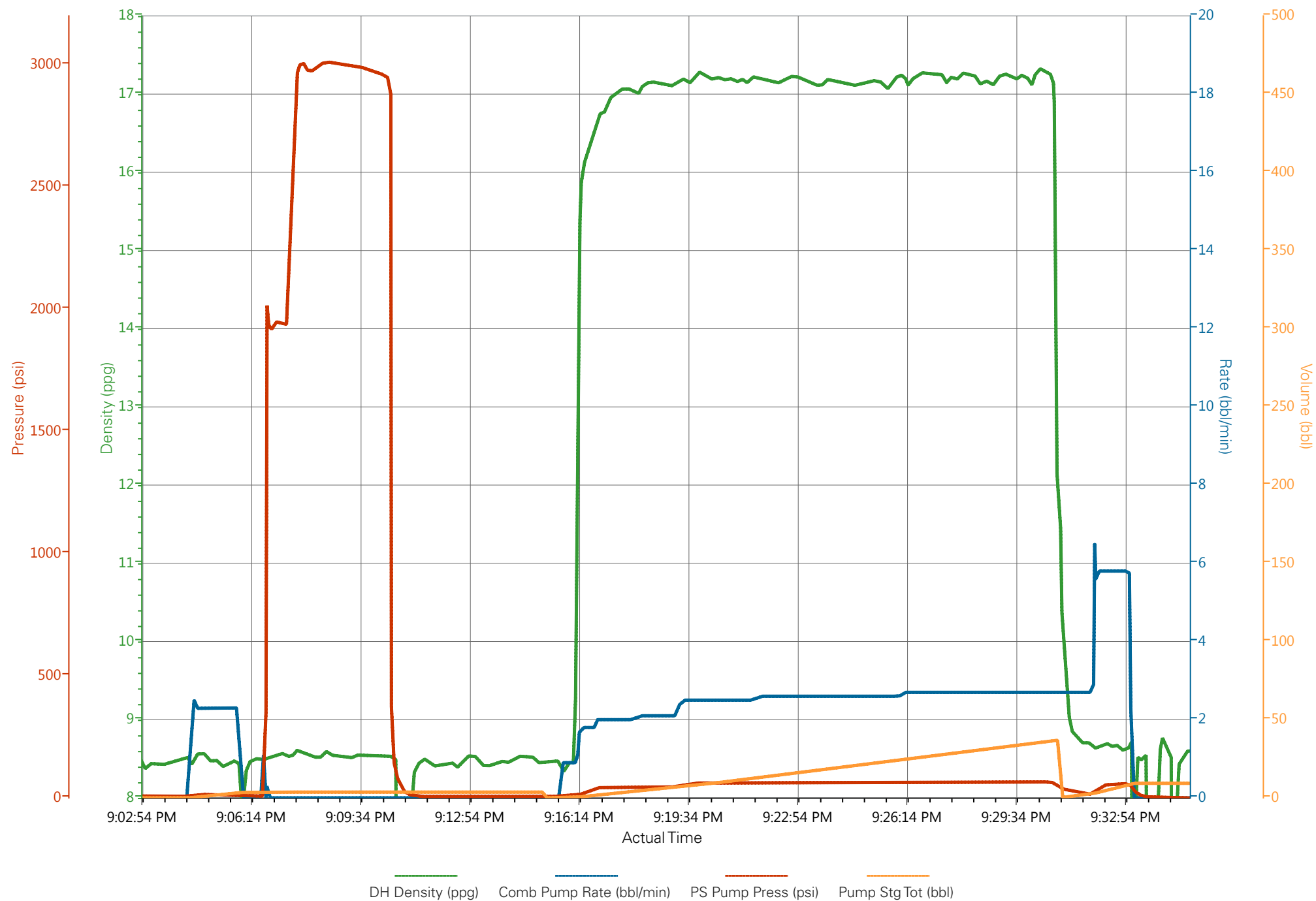
FRAM MANSUR 33-4D KOP



DH Density (ppg)    Comb Pump Rate (bbl/min)    PS Pump Press (psi)    Pump Stg Tot (bbl)

- |                              |                                       |                              |                                     |                         |
|------------------------------|---------------------------------------|------------------------------|-------------------------------------|-------------------------|
| ① Start Job 8.32;0;10;0      | ④ Pump Cement 11.8;2.2;64;1.2         | ⑦ End Job 8.56;0;2;35.4      | ⑩ Test Lines 8.59;0;3010;3.7        | ⑬ Shutdown 7.9;0;23;9.3 |
| ② Fill Lines 0.77;1.5;9;0.1  | ⑤ Pump Displacement 10.42;2.2;20;17.9 | ⑧ Start Job 8.45;0;7;0       | ⑪ Pump Cement 9.27;0.9;11;0.4       | ⑭ End Job 6.74;0;-1;9.3 |
| ③ Test Lines 8.47;0;3046;2.2 | ⑥ Shutdown 6.98;0;33;35.4             | ⑨ Fill lines 8.56;2.3;14;0.5 | ⑫ Pump Displacement 9.95;2.7;34;0.4 |                         |

FRAM MANSUR 33-4D KOP





**Date:** 6/13/2014

**Date Rec.:** 6/13/2014

**S.O.#** **901424002**

**Job Type:** Plug Back

Specific Gravity	MAX	1
pH	8	6.5
Potassium (K)	5000	200 Mg / L
Calcium (Ca)	500	50 Mg / L
Iron (FE2)	300	0 Mg / L
Chlorides (Cl)	3000	0 Mg / L
Sulfates (SO <sub>4</sub> )	1500	<200 Mg / L
Temp	40-80	64 Deg
Total Dissolved Solids		80 Mg / L

**Location: Grand Junction, CO**

**NOTICE:** This report is limited to the described sample tested. Any person using or relying on this report agrees that Halliburton shall not be liable for any loss or damage whether due to act or omission resulting from such report or