

WPX Rocky Mountain LLC - EBUS

SG 33-28

H&P 318

Post Job Summary

Cement Surface Casing

Date Prepared: 09/29/2014
Job Date: 09/22/2014

Submitted by: Patrick Ealey – Grand Junction Cement Engineer

The Road to Excellence Starts with Safety

Sold To #: 300721	Ship To #: 3123546	Quote #:	Sales Order #: 0901687002
Customer: WPX ENERGY ROCKY MOUNTAIN LLC-EBUS		Customer Rep: W C WILSON	
Well Name: FEDERAL	Well #: SG 33-28	API/UWI #: 05-045-21960-00	
Field: GRAND VALLEY	City (SAP): PARACHUTE	County/Parish: GARFIELD	State: COLORADO
Legal Description: NE SE-28-7S-96W-2256FSL-481FEL			
Contractor:		Rig/Platform Name/Num: H&P 318	
Job BOM: 7521			
Well Type: DIRECTIONAL GAS			
Sales Person: HALAMERICA\HX23209		Srvc Supervisor: Craig Kukus	
Job			

Formation Name	
Formation Depth (MD)	Top Bottom
Form Type	BHST
Job depth MD	1703ft Job Depth TVD 1703 FT
Water Depth	Wk Ht Above Floor 4 FT
Perforation Depth (MD)	From To

Well Data										
Description	New / Used	Size in	ID in	Weight lbm/ft	Thread	Grade	Top MD ft	Bottom MD ft	Top TVD ft	Bottom TVD ft
Open Hole Section			13.5				0	1700		0
Casing		9.625	9.001	32.3		J-55	0	1703		0

Tools and Accessories									
Type	Size in	Qty	Make	Depth ft		Type	Size in	Qty	Make
Guide Shoe	9.625	1		1703		Top Plug	9.625	1	HES
Float Shoe	9.625					Bottom Plug	9.625		HES
Float Collar	9.625	1				SSR plug set	9.625		HES
Insert Float	9.625					Plug Container	9.625	1	HES
Stage Tool	9.625					Centralizers	9.625		HES

Miscellaneous Materials											
Gelling Agt		Conc		Surfactant		Conc		Acid Type		Qty	Conc
Treatment Fld		Conc		Inhibitor		Conc		Sand Type		Size	Qty

Fluid Data

Stage/Plug #: 1

Fluid #	Stage Type	Fluid Name	Qty	Qty UoM	Mixing Density lbm/gal	Yield ft3/sack	Mix Fluid Gal	Rate bbl/min	Total Mix Fluid Gal
1	Fresh Water	Fresh Water	20	bbl	8.34		4		

Fluid #	Stage Type	Fluid Name	Qty	Qty UoM	Mixing Density lbm/gal	Yield ft3/sack	Mix Fluid Gal	Rate bbl/min	Total Mix Fluid Gal
2	VariCem GJ5	VARICEM (TM) CEMENT	260	sack	12.3	2.45		8	14.17

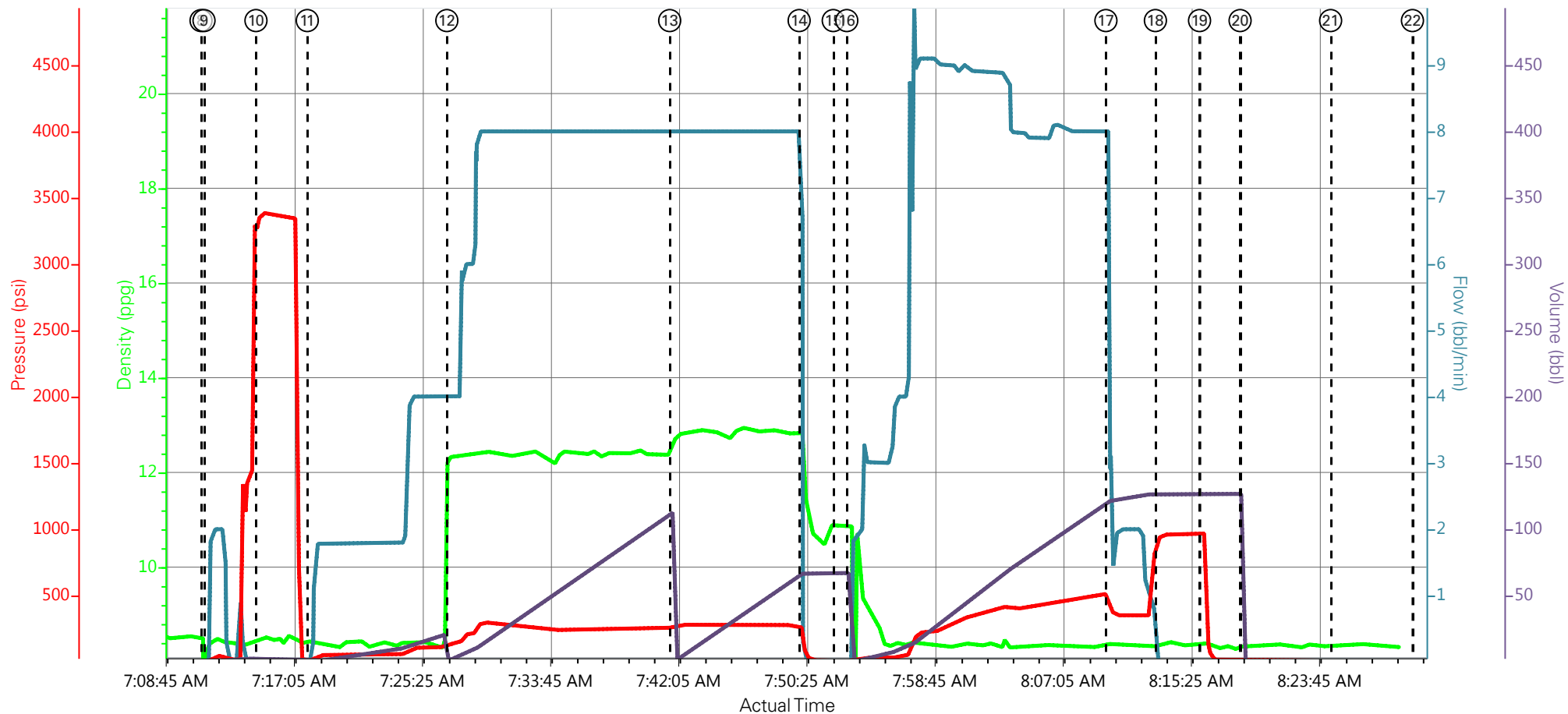
14.17 Gal		FRESH WATER							
Fluid #	Stage Type	Fluid Name	Qty	Qty UoM	Mixing Density lbm/gal	Yield ft3/sack	Mix Fluid Gal	Rate bbl/min	Total Mix Fluid Gal
3	VariCem GJ5	VARICEM (TM) CEMENT	170	sack	12.8	2.18		8	12.11
12.11 Gal		FRESH WATER							
Fluid #	Stage Type	Fluid Name	Qty	Qty UoM	Mixing Density lbm/gal	Yield ft3/sack	Mix Fluid Gal	Rate bbl/min	Total Mix Fluid Gal
4	Fresh Water Displacement	Fresh Water Displacement	130	bbl	8.34			9	
Cement Left In Pipe		Amount	44.07 ft		Reason		Shoe Joint		
Comment CEMENT TO SURFACE 28 BBLS TOTAL									

3.1 Job Event Log

Type	Seq. No.	Activity	Date	Time	Source	DH Density (ppg)	Comb Pump Rate (bbl/min)	DS Pump Press (psi)	Comb Pump Total (bbl)	Comment
Event	1	Call Out	9/21/2014	19:00:00	USER					CREW CALL OUT
Event	2	Depart from Service Center or Other Site	9/21/2014	21:30:00	USER					DEPART SERVICE CENTER SAFETY MEETING
Event	3	Arrive At Loc	9/21/2014	22:30:00	USER					ARRIVE EARLY AT LOC - RIG SETTING UP TO RUN CSG - HES EQUIPMENT ON LOC - 1 EA CEMENT PUMP UNIT 1 EA 660 BULK UNIT - 1EA BODY LOAD BULK EQUIP - 1 EA SERVICE PICK UP UNIT
Event	4	Assessment Of Location Safety Meeting	9/21/2014	22:45:00	USER					ASSESMENT WALK THRU OF LOC ALL HES PRESENT
Event	5	Pre-Rig Up Safety Meeting	9/22/2014	05:30:00	USER					RIG UP SAFETY MEETING ALL HES PRESENT
Event	6	Rig-Up Equipment	9/22/2014	05:55:00	USER					RIG UP IRON TO RED ZONE AND RIG UP FLOOR / RIG UP SUCTION HOSES TO UP RIGHT
Event	7	Pre-Job Safety Meeting	9/22/2014	06:55:00	USER	7.48	0.00	5.00	0.7	PRE-JOB SAFETY MEETING ALL RIG PERSONEL AND HES PRESENT
Event	8	Start Job	9/22/2014	07:11:13	COM6	7.20	0.00	-1.00	0.0	JOB CALCULATIONS: TP 1703.85 FT SJT 44.07 FT OH 13.5 IN WF/WT 9.4# CSG 9 5/8 IN 32#-36#
Event	9	Prime Pumps	9/22/2014	07:11:24	COM6	8.44	0.00	-3.00	2.0	PRIME LINES WITH FRESH WATER
Event	10	Test Lines	9/22/2014	07:14:47	COM6	8.46	0.00	3361.00	.4	PRESSURE TEST LINES 5 TH GEAR STALL OUT AT 1400 PSI
Event	11	Pump Spacer 1	9/22/2014	07:18:07	COM6	8.41	0.00	11.00	20	PUMP H2O SPACER 20 BBLs
Event	12	Pump Lead Cement	9/22/2014	07:27:12	COM6	12.32	4.00	142.00	113	PUMP 260 SKS LEAD CEMENT AT 12.3 PPG 2.45 Y 14.17 GAL/SKS RETURNS GOOD - CEMENT DIP GOOD
Event	13	Pump Tail Cement	9/22/2014	07:41:41	COM6	12.64	8.00	264.00	66.9	PUMP 170 SKS TAIL CEMENT AT 12.8 PPG 2.18 Y 12.11 GAL/SKS RETURNS GOOD - CEMENT DIP GOOD
Event	14	Shutdown	9/22/2014	07:50:06	USER	12.82	0.30	173.00	202.3	SHUT DOWN END CEMENT / READY TUB FOR WASH UP ON TOP OF PLUG
Event	15	Drop Top Plug	9/22/2014	07:52:20	USER	10.86	0.00	8.00	0	DROP TOP PLUG / PLUG AWAY
Event	16	Pump Displacement	9/22/2014	07:53:12	COM6	10.80	0.00	7.00	120	PUMP H2O DISPLACEMENT
Event	17	Slow Rate	9/22/2014	08:10:03	USER	8.37	2.90	433.00	121	SLOW RATE LAST 10 BBLs TO 2 BBL MIN
Event	18	Bump Plug	9/22/2014	08:13:17	COM6	8.37	0.00	939.00	130	PLUG LANDED AT 355 PSI BUMP TO 938 PSI AND HOLD

Event	19	Check Floats	9/22/2014	08:16:09	USER	8.40	0.00	967.00	130	CHECK FLOATS / FLOATS HELD GOT BACK .5 BBLS TO TANKS
Event	20	End Job	9/22/2014	08:18:47	COM6	8.29	0.00	5.00	332.3	END JOB / HAD GOOD RETURNS THRU OUT THE JOB / GOT 28 BBLS CEMENT TO SURFACE
Event	21	Pre-Rig Down Safety Meeting	9/22/2014	08:24:40	USER	8.34	0.00	7.00	0.0	ALL HES CREW PRESENT
Event	22	Rig-Down Equipment	9/22/2014	08:30:00	USER					RIG DOWN FLOOR AND WASH UP PUMP AND RIG DOWN
Event	23	Depart Location Safety Meeting	9/22/2014	09:20:00	USER					SAFETY MEETING DEPARTING LOC ALL HES PRESENT
Event	24	Comment	9/22/2014	09:30:00	USER					THANK YOU FOR USING HALLIBURTON CEMENTING SERVICES AND THE CREW OF CRAIG KUKUS

WPX ENERGY ROCKY MOUNTAIN HP 318 CEMENT SURFACE CSG JOB



— DH Density (ppg)
 — Comb Pump Rate (bbl/min)
 — DS Pump Press (psi)
 — Comb Pump Total (bbl)

- | | | |
|--|--|---|
| ① Call Out n/a ; n/a ; n/a ; n/a | ⑨ Prime Pumps 8.44 ; 0 ; -3 ; 0 | ⑰ Slow Rate 8.37 ; 2.9 ; 433 ; 121.4 |
| ② Depart from Service Center or Other Site n/a ; n/a ; n/a ; n/a | ⑩ Test Lines 8.46 ; 0 ; 3361 ; 2.4 | ⑱ Bump Plug 8.37 ; 0 ; 939 ; 126.6 |
| ③ Arrive At Loc n/a ; n/a ; n/a ; n/a | ⑪ Pump Spacer 1 8.41 ; 0 ; 11 ; 2.4 | ⑲ Check Floats 8.4 ; 0 ; 967 ; 126.6 |
| ④ Assessment Of Location Safety Meeting n/a ; n/a ; n/a ; n/a | ⑫ Pump Lead Cement 12.32 ; 4 ; 142 ; 1.5 | 20 End Job 8.29 ; 0 ; 5 ; 0 |
| ⑤ Pre-Rig Up Safety Meeting n/a ; n/a ; n/a ; n/a | ⑬ Pump Tail Cement 12.64 ; 8 ; 264 ; 112.8 | 21 Pre-Rig Down Safety Meeting 8.34 ; 0 ; 7 ; 0 |
| ⑥ Rig-Up Equipment n/a ; n/a ; n/a ; n/a | ⑭ Shutdown 12.82 ; 0.3 ; 173 ; 67 | 22 Rig-Down Equipment n/a ; n/a ; n/a ; n/a |
| ⑦ Pre-Job Safety Meeting 7.48 ; 0 ; 5 ; 0.7 | ⑮ Drop Top Plug 10.86 ; 0 ; 8 ; 67 | 23 Depart Location Safety Meeting n/a ; n/a ; n/a ; n/a |
| ⑧ Start Job 7.2 ; 0 ; -1 ; 0 | ⑯ Pump Displacement 10.8 ; 0 ; 7 ; 67 | 24 Comment n/a ; n/a ; n/a ; n/a |

▼ **HALLIBURTON** | iCem[®] Service

Created: 2014-09-21 23:23:20, Version: 4.0.248

Edit

Customer: WPX ENERGY ROCKY MOUNTAIN LLC-EBUS

Job Date: 9/22/2014 6:44:21 AM

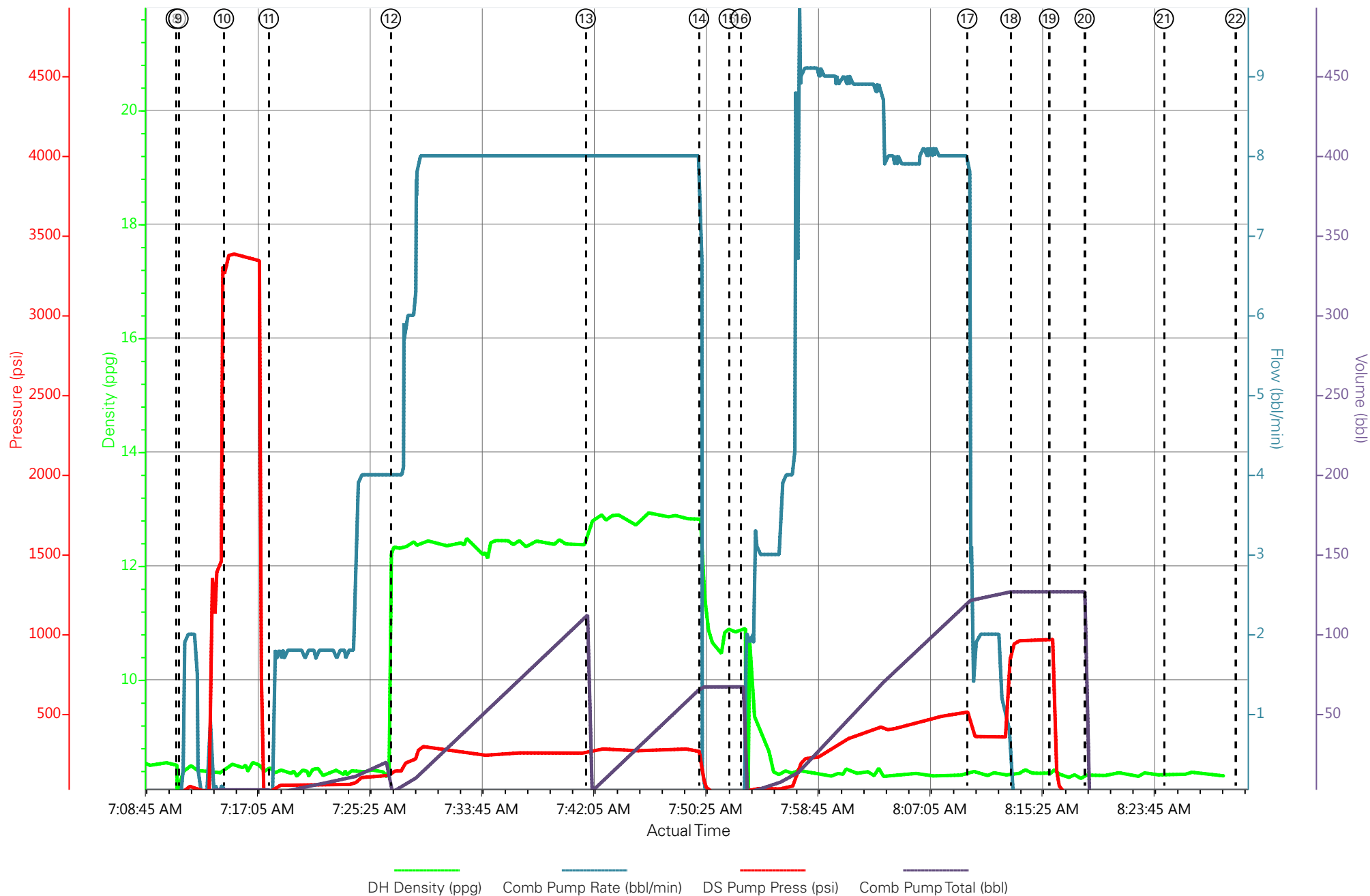
Well: 33-28

Representative: CRAIG KUKUS

Sales Order #: 0901687002

E-3 / OPERATOR: TRAVIS BROWN

WPX ENERGY ROCKY MOUNTAIN HP 318 CEMENT SURFACE CSG JOB



HALLIBURTON

Water Analysis Report

Company: WPX ENERGY
Submitted by: CRAIG KUKUS
Attention: _____
Lease SG
Well # 33-28

Date: 9/21/2014
Date Rec.: 9/22/2014
S.O.# 901687002
Job Type: SURFACE

Specific Gravity	MAX	0
pH	8	7
Potassium (K)	5000	200 Mg / L
HARDNESS	500	425 Mg / L
Iron (FE2)	300	0 Mg / L
Chlorides (Cl)	3000	0 Mg / L
Sulfates (SO ₄)	1500	<200 Mg / L
Chlorine (Cl ₂)		0 Mg / L
Temp	40-80	68 Deg
Total Dissolved Solids		510 Mg / L

Respectfully: CRAIG KUKUS

Title: CEMENTING SUPERVISOR

Location: Grand Junction, CO

NOTICE:

This report is limited to the described sample tested. Any person using or relying on this report agrees that Halliburton shall not be liable for any loss or damage whether due to act or omission resulting from such report or its

Sales Order #: 0901687002	Line Item: 10	Survey Conducted Date: 9/22/2014
Customer: WPX ENERGY ROCKY MOUNTAIN LLC-EBUS		Job Type (BOM): CMT SURFACE CASING BOM
Customer Representative: W C WILSON		API / UWI: (leave blank if unknown) 05-045-21960-00
Well Name: FEDERAL		Well Number: 0080125618
Well Type: DIRECTIONAL GAS	Well Country: USA	
H2S Present: No	Well State: COLORADO	Well County: GARFIELD

Dear Customer,

We hope that you were satisfied with the service quality of this job performed by Halliburton. It is the aim of our management and service personnel to deliver equipment and service of a standard unmatched in the service sector of the energy industry.

Please take the time to let us know if our performance met with your satisfaction. Please be as critical as possible to ensure we constantly improve our service. Your comments are of great value to us and are intended for the exclusive use of Halliburton.

CUSTOMER SATISFACTION SURVEY

CATEGORY	CUSTOMER SATISFACTION RESPONSE	
Survey Conducted Date	The date the survey was conducted	9/22/2014
Survey Interviewer	The survey interviewer is the person who initiated the survey.	HX19742
Customer Participation	Did the customer participate in this survey? (Y/N)	Yes
Customer Representative	Enter the Customer representative name	W C WILSON
HSE	Was our HSE performance satisfactory? Circle Y or N	Yes
Equipment	Were you satisfied with our Equipment? Circle Y or N	Yes
Personnel	Were you satisfied with our people? Circle Y or N	Yes
Customer Comment	Customer's Comment	

CUSTOMER SIGNATURE

Sales Order #: 0901687002	Line Item: 10	Survey Conducted Date: 9/22/2014
Customer: WPX ENERGY ROCKY MOUNTAIN LLC-EBUS		Job Type (BOM): CMT SURFACE CASING BOM
Customer Representative: W C WILSON		API / UWI: (leave blank if unknown) 05-045-21960-00
Well Name: FEDERAL		Well Number: 0080125618
Well Type: DIRECTIONAL GAS	Well Country: USA	
H2S Present: No	Well State: COLORADO	Well County: GARFIELD

KEY PERFORMANCE INDICATORS

General	
Survey Conducted Date The date the survey was conducted	9/22/2014

Cementing KPI Survey	
Type of Job Select the type of job. (Cementing or Non-Cementing)	0
Select the Maximum Deviation range for this Job What is the highest deviation for the job you just completed? This may not be the maximum well deviation.	Vertical
Total Operating Time (hours) Total Operating Hours Including Rig-up, Pumping, Rig-down. Enter in decimal format.	2
HSE Incident, Accident, Injury HSE Incident, Accident, Injury. This should be recordable incidents only.	No
Was the job purpose achieved? Was the job delivered correctly as per customer agreed design?	Yes
Operating Hours (Pumping Hours) Total number of hours pumping fluid on this job. Enter in decimal format.	1
Customer Non-Productive Rig Time (hrs) Lost time due to Halliburton in the start, execution, or completion of an ordered service or product, or delays in a follow-on service. Enter in decimal format. 0 if none.	0
Type of Rig Classification Job Was Performed Type Of Rig (classification) Job Was Performed On	Drilling Rig (Portable)
Number Of JSAs Performed Number Of Jsas Performed	6
Number of Unplanned Shutdowns Unplanned shutdown is when injection stops for any period of time.	0
Was this a Primary Cement Job (Yes / No)	Yes

Sales Order #: 0901687002	Line Item: 10	Survey Conducted Date: 9/22/2014
Customer: WPX ENERGY ROCKY MOUNTAIN LLC-EBUS		Job Type (BOM): CMT SURFACE CASING BOM
Customer Representative: W C WILSON		API / UWI: (leave blank if unknown) 05-045-21960-00
Well Name: FEDERAL		Well Number: 0080125618
Well Type: DIRECTIONAL GAS	Well Country: USA	
H2S Present: No	Well State: COLORADO	Well County: GARFIELD

Primary Cement Job= Casing job, Liner job, or Tie-back job.	
Did We Run Wiper Plugs? Did We Run Top And Bottom Casing Wiper Plugs?	Top
Mixing Density of Job Stayed in Designed Density Range (0-100%) Density Range defined as +/- .20 ppg. Calculation: Total BBLs cement mixed at designed density divided by total BBLs of cement multiplied by 100	99
Was Automated Density Control Used? Was Automated Density Control (ADC) Used ?	Yes
Pump Rate (percent) of Job Stayed At Designed Pump Rate Pump Rate range defined as +/- 1bbl/min. Calculation: Total BBLs of fluid pumped at the designed rate divided by Total BBLs of fluid pumped, multiplied by 100	99
Nbr of Remedial Sqz Jobs Rqd - Competition Number Of Remedial Squeeze Jobs Required After Primary Job Performed By Competition	0
Nbr of Remedial Plug Jobs Rqd - HES Number Of Remedial Plug Jobs Needed After Primary Plug Pumped By HES	0
Nbr of Remedial Sqz Jobs Rqd - HES Number Of Remedial Squeeze Jobs Required After Primary Job Performed By HES	0