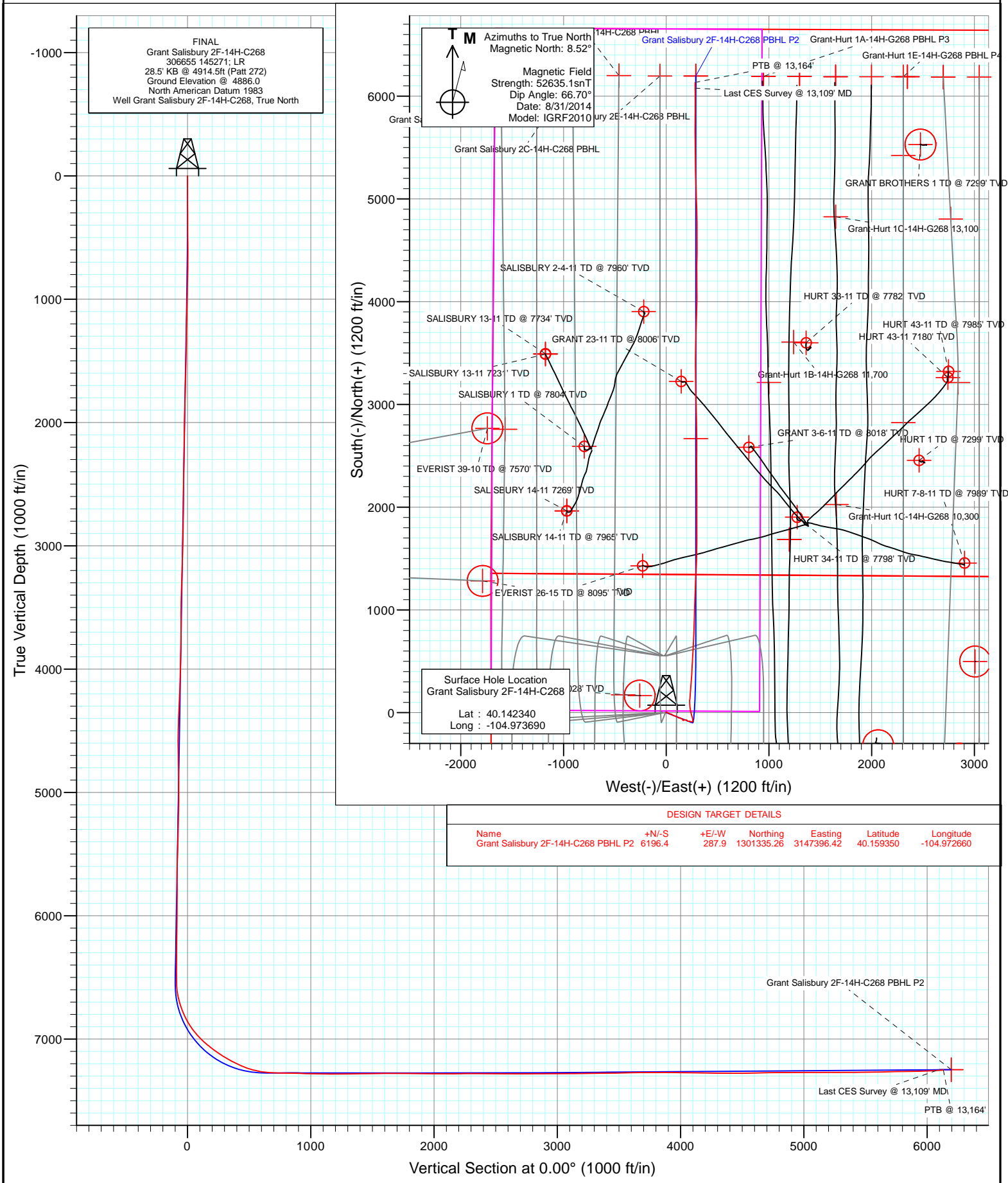


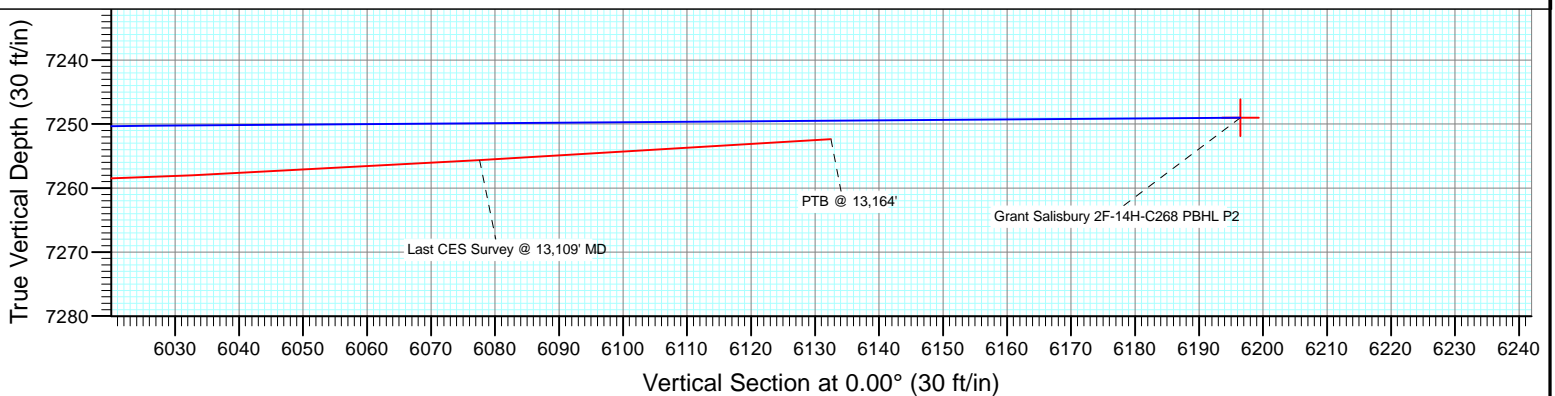
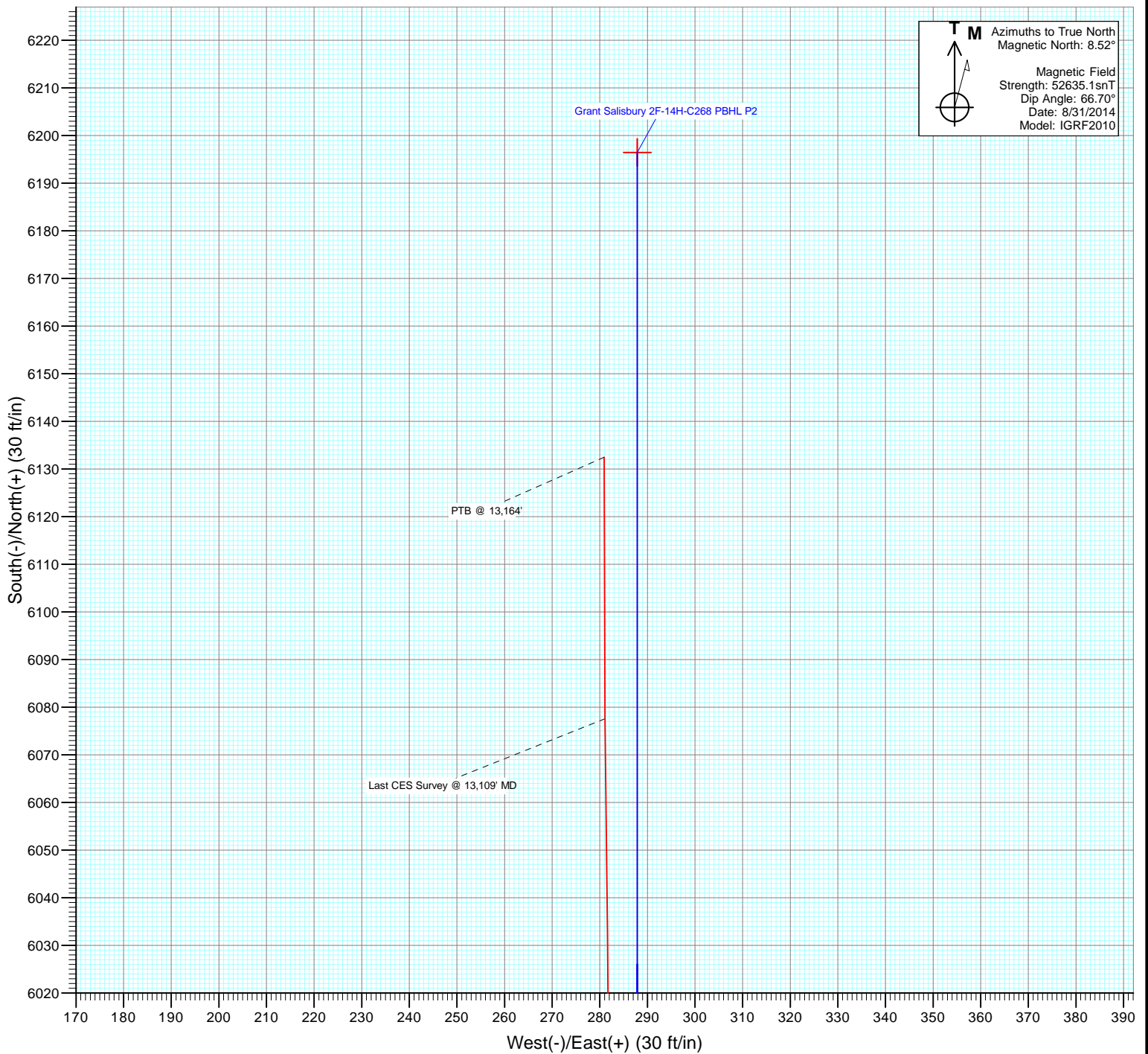


Project: DJ Wattenberg
 Site: S14-T2N-R68W (Grant Elmquist/Salisbury/Hurt)
 Well: Grant Salisbury 2F-14H-C268
 Wellbore: Hz
 Design: FINAL





Project: DJ Wattenberg
Site: S14-T2N-R68W (Grant Elmquist/Salisbury/Hurt)
Well: Grant Salisbury 2F-14H-C268
Wellbore: Hz
Design: FINAL



Survey Report

Company: EnCana Oil & Gas (USA) Inc	Local Co-ordinate Reference: Well Grant Salisbury 2F-14H-C268
Project: DJ Wattenberg	TVD Reference: 28.5' KB @ 4914.5ft (Patt 272)
Site: S14-T2N-R68W (Grant Elmquist/Salisbury/Hurt)	MD Reference: 28.5' KB @ 4914.5ft (Patt 272)
Well: Grant Salisbury 2F-14H-C268	North Reference: True
Wellbore: Hz	Survey Calculation Method: Minimum Curvature
Design: FINAL	Database: USA EDM 5000 Multi Users DB

Project DJ Wattenberg		
Map System: US State Plane 1983	System Datum:	Mean Sea Level
Geo Datum: North American Datum 1983		
Map Zone: Colorado Northern Zone		

Site S14-T2N-R68W (Grant Elmquist/Salisbury/Hurt)				
Site Position:	Northing:	1,295,686.81 ft	Latitude:	40.143850
From: Lat/Long	Easting:	3,147,060.98 ft	Longitude:	-104.973980
Position Uncertainty: 0.0 ft	Slot Radius:	13.200 in	Grid Convergence:	0.34 °

Well Grant Salisbury 2F-14H-C268				
Well Position	+N/-S	0.0 ft	Northing:	1,295,137.22 ft
	+E/-W	0.0 ft	Easting:	3,147,145.32 ft
			Longitude:	-104.973690
Position Uncertainty		0.0 ft	Wellhead Elevation:	ft
			Ground Level:	4,886.0 ft

Wellbore Hz					
Magnetics	Model Name	Sample Date	Declination (°)	Dip Angle (°)	Field Strength (nT)
	IGRF2010	8/31/2014	8.52	66.70	52,635

Design FINAL				
Audit Notes:				
Version:	1.0	Phase:	ACTUAL	Tie On Depth: 0.0
Vertical Section:	Depth From (TVD) (ft)	+N/-S (ft)	+E/-W (ft)	Direction (°)
	0.0	0.0	0.0	0.00

Survey Program		Date 9/10/2014
From (ft)	To (ft)	Survey (Wellbore)
135.0	13,164.0	Survey #1 (Hz)
		Tool Name Geolink MWD
		Description Geolink MWD

Measured Depth (ft)	Inclination (°)	Azimuth (°)	Vertical Depth (ft)	+N/-S (ft)	+E/-W (ft)	Vertical Section (ft)	Dogleg Rate (°/100ft)	Build Rate (°/100ft)	Formations / Comments
0.0	0.00	0.00	0.0	0.0	0.0	0.0	0.00	0.00	
135.0	0.30	338.10	135.0	0.3	-0.1	0.3	0.22	0.22	
229.0	0.30	342.50	229.0	0.8	-0.3	0.8	0.02	0.00	
322.0	0.30	342.40	322.0	1.3	-0.4	1.3	0.00	0.00	
416.0	0.40	329.80	416.0	1.8	-0.7	1.8	0.13	0.11	
509.0	0.80	320.40	509.0	2.6	-1.3	2.6	0.44	0.43	
603.0	0.70	80.60	603.0	3.2	-1.1	3.2	1.38	-0.11	
697.0	2.00	93.90	697.0	3.1	1.1	3.1	1.41	1.38	
790.0	3.10	101.20	789.9	2.5	5.2	2.5	1.23	1.18	
865.0	3.60	111.70	864.7	1.3	9.4	1.3	1.05	0.67	
945.0	3.60	118.40	944.6	-0.9	13.9	-0.9	0.53	0.00	
1,012.0	3.60	115.80	1,011.4	-2.8	17.6	-2.8	0.24	0.00	
1,106.0	3.60	119.70	1,105.3	-5.5	22.9	-5.5	0.26	0.00	

Survey Report

Company:	EnCana Oil & Gas (USA) Inc	Local Co-ordinate Reference:	Well Grant Salisbury 2F-14H-C268
Project:	DJ Wattenberg	TD Reference:	28.5' KB @ 4914.5ft (Patt 272)
Site:	S14-T2N-R68W (Grant Elmquist/Salisbury/Hurt)	MVD Reference:	28.5' KB @ 4914.5ft (Patt 272)
Well:	Grant Salisbury 2F-14H-C268	North Reference:	True
Wellbore:	Hz	Survey Calculation Method:	Minimum Curvature
Design:	FINAL	Database:	USA EDM 5000 Multi Users DB

Survey									
Measured Depth (ft)	Inclination (°)	Azimuth (°)	Vertical Depth (ft)	+N/-S (ft)	+E/-W (ft)	Vertical Section (ft)	Dogleg Rate (°/100ft)	Build Rate (°/100ft)	Formations / Comments
1,199.0	2.10	110.00	1,198.1	-7.5	27.0	-7.5	1.69	-1.61	
1,293.0	1.70	102.60	1,292.1	-8.4	30.0	-8.4	0.50	-0.43	
1,386.0	3.40	109.50	1,385.0	-9.7	33.9	-9.7	1.85	1.83	
1,480.0	3.20	106.70	1,478.8	-11.3	39.1	-11.3	0.27	-0.21	
1,573.0	3.50	115.00	1,571.7	-13.3	44.1	-13.3	0.61	0.32	
1,667.0	3.20	109.10	1,665.5	-15.4	49.2	-15.4	0.49	-0.32	
1,760.0	3.50	119.20	1,758.4	-17.6	54.1	-17.6	0.71	0.32	
1,854.0	2.60	130.00	1,852.2	-20.4	58.3	-20.4	1.13	-0.96	
1,948.0	2.70	123.00	1,946.1	-22.9	61.8	-22.9	0.36	0.11	
2,042.0	2.20	113.60	2,040.0	-24.9	65.3	-24.9	0.68	-0.53	
2,137.0	2.20	116.50	2,135.0	-26.4	68.6	-26.4	0.12	0.00	
2,231.0	2.20	110.10	2,228.9	-27.8	71.9	-27.8	0.26	0.00	
2,326.0	2.10	113.10	2,323.8	-29.1	75.2	-29.1	0.16	-0.11	
2,420.0	1.70	111.10	2,417.8	-30.3	78.1	-30.3	0.43	-0.43	
2,515.0	1.60	110.00	2,512.7	-31.3	80.6	-31.3	0.11	-0.11	
2,609.0	1.60	106.30	2,606.7	-32.1	83.1	-32.1	0.11	0.00	
2,704.0	2.40	111.20	2,701.7	-33.2	86.3	-33.2	0.86	0.84	
2,799.0	2.20	100.30	2,796.6	-34.2	89.9	-34.2	0.51	-0.21	
2,893.0	3.30	100.70	2,890.5	-35.1	94.3	-35.1	1.17	1.17	
2,988.0	3.80	118.60	2,985.3	-37.1	99.8	-37.1	1.27	0.53	
3,083.0	3.40	115.80	3,080.1	-39.8	105.1	-39.8	0.46	-0.42	
3,177.0	3.30	123.40	3,173.9	-42.5	109.9	-42.5	0.48	-0.11	
3,272.0	3.00	123.00	3,268.8	-45.4	114.2	-45.4	0.32	-0.32	
3,366.0	2.60	127.60	3,362.7	-48.0	118.0	-48.0	0.49	-0.43	
3,461.0	1.70	134.50	3,457.6	-50.3	120.7	-50.3	0.98	-0.95	
3,555.0	1.10	102.40	3,551.6	-51.5	122.6	-51.5	1.03	-0.64	
3,650.0	1.80	86.70	3,646.6	-51.6	125.0	-51.6	0.84	0.74	
3,745.0	3.00	97.00	3,741.5	-51.8	128.9	-51.8	1.34	1.26	
3,839.0	3.40	104.70	3,835.3	-52.8	134.0	-52.8	0.62	0.43	
3,934.0	4.30	104.80	3,930.1	-54.4	140.2	-54.4	0.95	0.95	
4,028.0	4.60	117.20	4,023.8	-57.1	147.0	-57.1	1.07	0.32	
4,123.0	3.60	123.80	4,118.6	-60.5	152.8	-60.5	1.16	-1.05	
4,217.0	3.10	134.60	4,212.4	-63.9	157.1	-63.9	0.85	-0.53	
4,311.0	2.40	154.50	4,306.3	-67.5	159.8	-67.5	1.25	-0.74	
4,406.0	2.50	155.00	4,401.2	-71.1	161.5	-71.1	0.11	0.11	
4,500.0	1.50	149.70	4,495.2	-74.1	163.0	-74.1	1.08	-1.06	
4,594.0	1.00	92.70	4,589.2	-75.2	164.4	-75.2	1.35	-0.53	
4,689.0	1.70	75.00	4,684.1	-74.8	166.6	-74.8	0.85	0.74	
4,783.0	2.30	66.40	4,778.1	-73.7	169.7	-73.7	0.71	0.64	
4,878.0	3.20	69.90	4,873.0	-72.0	173.9	-72.0	0.96	0.95	
4,972.0	3.50	75.20	4,966.8	-70.4	179.2	-70.4	0.46	0.32	
5,066.0	3.90	92.40	5,060.6	-69.8	185.1	-69.8	1.25	0.43	
5,161.0	4.70	101.90	5,155.3	-70.7	192.2	-70.7	1.12	0.84	
5,255.0	3.90	114.00	5,249.1	-72.8	198.9	-72.8	1.28	-0.85	
5,350.0	3.30	140.80	5,343.9	-76.3	203.5	-76.3	1.86	-0.63	
5,444.0	2.60	131.70	5,437.8	-79.8	206.8	-79.8	0.89	-0.74	
5,539.0	2.30	136.00	5,532.7	-82.6	209.8	-82.6	0.37	-0.32	
5,633.0	0.80	125.70	5,626.6	-84.3	211.6	-84.3	1.62	-1.60	
5,726.0	1.90	85.40	5,719.6	-84.6	213.7	-84.6	1.49	1.18	
5,821.0	3.20	79.90	5,814.5	-84.0	217.9	-84.0	1.39	1.37	
5,916.0	3.80	91.70	5,909.3	-83.6	223.6	-83.6	0.98	0.63	
6,010.0	3.60	104.60	6,003.2	-84.5	229.6	-84.5	0.91	-0.21	
6,105.0	2.80	99.00	6,098.0	-85.6	234.8	-85.6	0.90	-0.84	

Survey Report

Company:	EnCana Oil & Gas (USA) Inc	Local Co-ordinate Reference:	Well Grant Salisbury 2F-14H-C268
Project:	DJ Wattenberg	TD Reference:	28.5' KB @ 4914.5ft (Patt 272)
Site:	S14-T2N-R68W (Grant Elmquist/Salisbury/Hurt)	MVD Reference:	28.5' KB @ 4914.5ft (Patt 272)
Well:	Grant Salisbury 2F-14H-C268	North Reference:	True
Wellbore:	Hz	Survey Calculation Method:	Minimum Curvature
Design:	FINAL	Database:	USA EDM 5000 Multi Users DB

Survey									
Measured Depth (ft)	Inclination (°)	Azimuth (°)	Vertical Depth (ft)	+N/-S (ft)	+E/-W (ft)	Vertical Section (ft)	Dogleg Rate (°/100ft)	Build Rate (°/100ft)	Formations / Comments
6,200.0	3.50	103.60	6,192.9	-86.6	239.9	-86.6	0.78	0.74	
6,294.0	3.00	101.80	6,286.7	-87.8	245.1	-87.8	0.54	-0.53	
6,389.0	3.20	104.00	6,381.6	-88.9	250.1	-88.9	0.24	0.21	
6,484.0	2.80	96.60	6,476.4	-89.9	255.0	-89.9	0.59	-0.42	
6,577.0	3.00	23.00	6,569.4	-87.9	258.2	-87.9	3.74	0.22	
6,625.0	8.80	357.30	6,617.1	-83.0	258.5	-83.0	12.99	12.08	
6,672.0	13.20	357.80	6,663.2	-74.1	258.1	-74.1	9.36	9.36	
6,719.0	16.70	350.70	6,708.6	-62.1	256.8	-62.1	8.39	7.45	
6,767.0	20.10	345.10	6,754.2	-47.3	253.6	-47.3	7.98	7.08	
6,814.0	25.00	343.50	6,797.6	-29.9	248.7	-29.9	10.51	10.43	
6,861.0	28.40	343.30	6,839.5	-9.7	242.6	-9.7	7.24	7.23	
6,908.0	32.70	348.40	6,880.0	13.5	236.9	13.5	10.68	9.15	
6,955.0	36.60	353.20	6,918.7	39.8	232.7	39.8	10.12	8.30	
7,002.0	40.20	354.70	6,955.5	68.8	229.6	68.8	7.91	7.66	
7,050.0	43.80	0.00	6,991.2	100.9	228.2	100.9	10.52	7.50	
7,097.0	47.60	4.40	7,024.0	134.5	229.5	134.5	10.50	8.09	
7,144.0	51.10	5.00	7,054.6	170.0	232.4	170.0	7.51	7.45	
7,191.0	53.30	4.70	7,083.4	207.0	235.6	207.0	4.71	4.68	
7,238.0	55.30	4.40	7,110.8	245.1	238.6	245.1	4.29	4.26	
7,285.0	57.80	4.30	7,136.8	284.2	241.6	284.2	5.32	5.32	
7,332.0	60.10	4.00	7,161.0	324.3	244.5	324.3	4.92	4.89	
7,380.0	62.60	3.90	7,184.0	366.4	247.4	366.4	5.21	5.21	
7,427.0	64.70	3.40	7,204.9	408.4	250.0	408.4	4.57	4.47	
7,474.0	67.80	3.20	7,223.8	451.3	252.5	451.3	6.61	6.60	
7,521.0	71.70	3.10	7,240.1	495.3	254.9	495.3	8.30	8.30	
7,569.0	75.60	2.90	7,253.6	541.3	257.4	541.3	8.13	8.12	
7,616.0	79.90	3.00	7,263.5	587.2	259.7	587.2	9.15	9.15	
7,651.0	82.70	3.20	7,268.8	621.7	261.6	621.7	8.02	8.00	
7,731.0	88.80	2.50	7,274.8	701.4	265.6	701.4	7.67	7.62	
7,793.0	88.90	2.40	7,276.0	763.3	268.2	763.3	0.23	0.16	
7,887.0	88.60	1.80	7,278.0	857.2	271.6	857.2	0.71	-0.32	
7,980.0	88.40	1.80	7,280.5	950.1	274.6	950.1	0.22	-0.22	
8,074.0	88.80	1.30	7,282.8	1,044.1	277.1	1,044.1	0.68	0.43	
8,167.0	89.60	1.80	7,284.1	1,137.0	279.6	1,137.0	1.01	0.86	
8,261.0	90.20	2.80	7,284.2	1,231.0	283.4	1,231.0	1.24	0.64	
8,354.0	90.90	2.40	7,283.3	1,323.9	287.6	1,323.9	0.87	0.75	
8,448.0	91.20	2.60	7,281.6	1,417.8	291.7	1,417.8	0.38	0.32	
8,541.0	90.10	1.50	7,280.6	1,510.7	295.0	1,510.7	1.67	-1.18	
8,635.0	90.60	0.50	7,280.0	1,604.7	296.7	1,604.7	1.19	0.53	
8,728.0	90.20	0.30	7,279.3	1,697.7	297.3	1,697.7	0.48	-0.43	
8,822.0	89.30	0.40	7,279.8	1,791.7	297.9	1,791.7	0.96	-0.96	
8,915.0	88.80	0.00	7,281.3	1,884.6	298.2	1,884.6	0.69	-0.54	
9,009.0	90.10	359.90	7,282.2	1,978.6	298.1	1,978.6	1.39	1.38	
9,103.0	90.30	359.80	7,281.9	2,072.6	297.9	2,072.6	0.24	0.21	
9,196.0	90.50	359.70	7,281.2	2,165.6	297.5	2,165.6	0.24	0.22	
9,290.0	90.30	359.10	7,280.6	2,259.6	296.5	2,259.6	0.67	-0.21	
9,383.0	89.60	359.70	7,280.6	2,352.6	295.5	2,352.6	0.99	-0.75	
9,477.0	89.50	0.70	7,281.4	2,446.6	295.9	2,446.6	1.07	-0.11	
9,571.0	89.80	0.20	7,282.0	2,540.6	296.6	2,540.6	0.62	0.32	
9,666.0	90.00	359.90	7,282.1	2,635.6	296.7	2,635.6	0.38	0.21	
9,760.0	89.40	359.20	7,282.6	2,729.6	295.9	2,729.6	0.98	-0.64	
9,855.0	90.30	358.90	7,282.9	2,824.6	294.4	2,824.6	1.00	0.95	
9,949.0	90.40	359.00	7,282.3	2,918.6	292.7	2,918.6	0.15	0.11	

Survey Report

Company:	EnCana Oil & Gas (USA) Inc	Local Co-ordinate Reference:	Well Grant Salisbury 2F-14H-C268
Project:	DJ Wattenberg	TVD Reference:	28.5' KB @ 4914.5ft (Patt 272)
Site:	S14-T2N-R68W (Grant Elmquist/Salisbury/Hurt)	MD Reference:	28.5' KB @ 4914.5ft (Patt 272)
Well:	Grant Salisbury 2F-14H-C268	North Reference:	True
Wellbore:	Hz	Survey Calculation Method:	Minimum Curvature
Design:	FINAL	Database:	USA EDM 5000 Multi Users DB

Survey									
Measured Depth (ft)	Inclination (°)	Azimuth (°)	Vertical Depth (ft)	+N/-S (ft)	+E/-W (ft)	Vertical Section (ft)	Dogleg Rate (°/100ft)	Build Rate (°/100ft)	Formations / Comments
10,043.0	90.00	358.60	7,282.0	3,012.5	290.7	3,012.5	0.60	-0.43	
10,138.0	90.90	359.10	7,281.2	3,107.5	288.8	3,107.5	1.08	0.95	
10,232.0	90.80	359.30	7,279.8	3,201.5	287.5	3,201.5	0.24	-0.11	
10,327.0	90.50	358.70	7,278.7	3,296.5	285.8	3,296.5	0.71	-0.32	
10,421.0	90.70	359.90	7,277.8	3,390.5	284.7	3,390.5	1.29	0.21	
10,515.0	91.00	0.90	7,276.4	3,484.5	285.3	3,484.5	1.11	0.32	
10,610.0	91.40	0.80	7,274.4	3,579.4	286.7	3,579.4	0.43	0.42	
10,704.0	90.30	1.90	7,273.0	3,673.4	288.9	3,673.4	1.65	-1.17	
10,798.0	90.20	1.30	7,272.6	3,767.3	291.6	3,767.3	0.65	-0.11	
10,893.0	90.50	1.90	7,272.0	3,862.3	294.2	3,862.3	0.71	0.32	
10,987.0	89.50	1.90	7,272.0	3,956.3	297.3	3,956.3	1.06	-1.06	
11,082.0	88.80	359.90	7,273.4	4,051.2	298.8	4,051.2	2.23	-0.74	
11,176.0	89.00	359.50	7,275.2	4,145.2	298.3	4,145.2	0.48	0.21	
11,271.0	88.80	359.20	7,277.0	4,240.2	297.3	4,240.2	0.38	-0.21	
11,364.0	90.50	0.30	7,277.6	4,333.2	296.8	4,333.2	2.18	1.83	
11,459.0	90.20	2.10	7,277.0	4,428.2	298.8	4,428.2	1.92	-0.32	
11,554.0	90.40	0.10	7,276.5	4,523.1	300.7	4,523.1	2.12	0.21	
11,648.0	90.90	359.60	7,275.5	4,617.1	300.4	4,617.1	0.75	0.53	
11,743.0	90.90	0.40	7,274.0	4,712.1	300.4	4,712.1	0.84	0.00	
11,837.0	90.50	358.30	7,272.8	4,806.1	299.3	4,806.1	2.27	-0.43	
11,932.0	90.60	358.60	7,271.9	4,901.1	296.8	4,901.1	0.33	0.11	
12,026.0	90.20	357.10	7,271.2	4,995.0	293.3	4,995.0	1.65	-0.43	
12,121.0	89.80	359.00	7,271.2	5,089.9	290.0	5,089.9	2.04	-0.42	
12,214.0	89.60	358.60	7,271.7	5,182.9	288.1	5,182.9	0.48	-0.22	
12,309.0	90.20	358.90	7,271.9	5,277.9	286.0	5,277.9	0.71	0.63	
12,405.0	90.50	358.10	7,271.3	5,373.8	283.5	5,373.8	0.89	0.31	
12,499.0	91.10	359.60	7,270.0	5,467.8	281.6	5,467.8	1.72	0.64	
12,593.0	91.20	359.50	7,268.1	5,561.8	280.9	5,561.8	0.15	0.11	
12,688.0	90.90	0.80	7,266.4	5,656.8	281.1	5,656.8	1.40	-0.32	
12,782.0	90.90	0.30	7,264.9	5,750.8	282.0	5,750.8	0.53	0.00	
12,876.0	91.00	0.30	7,263.3	5,844.7	282.5	5,844.7	0.11	0.11	
12,970.0	91.40	359.60	7,261.4	5,938.7	282.4	5,938.7	0.86	0.43	
13,064.0	92.70	359.40	7,258.0	6,032.6	281.6	6,032.6	1.40	1.38	
13,109.0	93.40	359.30	7,255.6	6,077.6	281.1	6,077.6	1.57	1.56	Last CES Survey @ 13,109' MD
13,164.0	93.40	0.34	7,252.4	6,132.5	280.9	6,132.5	1.89	0.00	PTB @ 13,164'

Survey Report

Company: EnCana Oil & Gas (USA) Inc	Local Co-ordinate Reference: Well Grant Salisbury 2F-14H-C268
Project: DJ Wattenberg	TVD Reference: 28.5' KB @ 4914.5ft (Patt 272)
Site: S14-T2N-R68W (Grant Elmquist/Salisbury/Hurt)	MD Reference: 28.5' KB @ 4914.5ft (Patt 272)
Well: Grant Salisbury 2F-14H-C268	North Reference: True
Wellbore: Hz	Survey Calculation Method: Minimum Curvature
Design: FINAL	Database: USA EDM 5000 Multi Users DB

Targets									
Target Name	Dip Angle	Dip Dir.	TVD	+N/-S	+E/-W	Northing	Easting	Latitude	Longitude
- hit/miss target	(°)	(°)	(ft)	(ft)	(ft)	(ft)	(ft)		
- Shape									
Grant Salisbury 2F-14H- - actual wellpath misses target center by 64.4ft at 13164.0ft MD (7252.4 TVD, 6132.5 N, 280.9 E) - Point	0.00	0.00	7,249.0	6,196.4	287.9	1,301,335.26	3,147,396.42	40.159350	-104.972660
Grant Salisbury 2F-14H- - actual wellpath misses target center by 11.3ft at 9697.5ft MD (7282.2 TVD, 2667.1 N, 296.6 E) - Point	0.00	0.00	7,275.0	2,667.0	287.9	1,297,805.91	3,147,417.37	40.149661	-104.972660
Grant Salisbury 2F-14H- - actual wellpath misses target center by 74.3ft at 13164.0ft MD (7252.4 TVD, 6132.5 N, 280.9 E) - Point	0.00	0.00	7,289.5	6,196.4	287.9	1,301,335.26	3,147,396.42	40.159350	-104.972660

Design Annotations					
	Measured Depth (ft)	Vertical Depth (ft)	Local Coordinates		Comment
			+N/-S (ft)	+E/-W (ft)	
	13,109.0	7,255.6	6,077.6	281.1	Last CES Survey @ 13,109' MD
	13,164.0	7,252.4	6,132.5	280.9	PTB @ 13,164'

Checked By: _____	Approved By: _____	Date: _____
-------------------	--------------------	-------------

EnCana Oil & Gas (USA) Inc

DJ Wattenberg

S14-T2N-R68W (Grant Elmquist/Salisbury/Hurt)

Grant Salisbury 2F-14H-C268

Hz

Design: FINAL

Survey Report - Geographic

10 September, 2014

Survey Report - Geographic

Company:	EnCana Oil & Gas (USA) Inc	Local Co-ordinate Reference:	Well Grant Salisbury 2F-14H-C268
Project:	DJ Wattenberg	TVD Reference:	28.5' KB @ 4914.5ft (Patt 272)
Site:	S14-T2N-R68W (Grant Elmquist/Salisbury/Hurt)	MD Reference:	28.5' KB @ 4914.5ft (Patt 272)
Well:	Grant Salisbury 2F-14H-C268	North Reference:	True
Wellbore:	Hz	Survey Calculation Method:	Minimum Curvature
Design:	FINAL	Database:	USA EDM 5000 Multi Users DB

Project	DJ Wattenberg		
Map System:	US State Plane 1983	System Datum:	Mean Sea Level
Geo Datum:	North American Datum 1983		
Map Zone:	Colorado Northern Zone		

Site	S14-T2N-R68W (Grant Elmquist/Salisbury/Hurt)				
Site Position:		Northing:	1,295,686.81 ft	Latitude:	40.143850
From:	Lat/Long	Easting:	3,147,060.98 ft	Longitude:	-104.973980
Position Uncertainty:	0.0 ft	Slot Radius:	13.200 in	Grid Convergence:	0.34 °

Well	Grant Salisbury 2F-14H-C268					
Well Position	+N/-S	0.0 ft	Northing:	1,295,137.22 ft	Latitude:	40.142340
	+E/-W	0.0 ft	Easting:	3,147,145.32 ft	Longitude:	-104.973690
Position Uncertainty		0.0 ft	Wellhead Elevation:	ft	Ground Level:	4,886.0 ft

Wellbore	Hz				
Magnetics	Model Name	Sample Date	Declination (°)	Dip Angle (°)	Field Strength (nT)
	IGRF2010	8/31/2014	8.52	66.70	52,635

Design	FINAL				
Audit Notes:					
Version:	1.0	Phase:	ACTUAL	Tie On Depth:	0.0
Vertical Section:	Depth From (TVD) (ft)	+N/-S (ft)	+E/-W (ft)	Direction (°)	
	0.0	0.0	0.0	0.00	

Survey Program	Date	9/10/2014			
From (ft)	To (ft)	Survey (Wellbore)	Tool Name	Description	
135.0	13,164.0	Survey #1 (Hz)	Geolink MWD	Geolink MWD	

Survey										
Measured Depth (ft)	Inclination (°)	Azimuth (°)	Vertical Depth (ft)	+N/-S (ft)	+E/-W (ft)	Map Northing (ft)	Map Easting (ft)	Latitude	Longitude	
0.0	0.00	0.00	0.0	0.0	0.0	1,295,137.22	3,147,145.32	40.142340	-104.973690	
135.0	0.30	338.10	135.0	0.3	-0.1	1,295,137.54	3,147,145.18	40.142341	-104.973691	
229.0	0.30	342.50	229.0	0.8	-0.3	1,295,138.00	3,147,145.01	40.142342	-104.973691	
322.0	0.30	342.40	322.0	1.3	-0.4	1,295,138.47	3,147,144.86	40.142343	-104.973692	
416.0	0.40	329.80	416.0	1.8	-0.7	1,295,138.98	3,147,144.62	40.142345	-104.973693	
509.0	0.80	320.40	509.0	2.6	-1.3	1,295,139.76	3,147,144.04	40.142347	-104.973695	
603.0	0.70	80.60	603.0	3.2	-1.1	1,295,140.36	3,147,144.19	40.142349	-104.973694	
697.0	2.00	93.90	697.0	3.1	1.1	1,295,140.36	3,147,146.39	40.142349	-104.973686	
790.0	3.10	101.20	789.9	2.5	5.2	1,295,139.78	3,147,150.48	40.142347	-104.973672	
865.0	3.60	111.70	864.7	1.3	9.4	1,295,138.54	3,147,154.66	40.142344	-104.973657	
945.0	3.60	118.40	944.6	-0.9	13.9	1,295,136.45	3,147,159.22	40.142338	-104.973641	
1,012.0	3.60	115.80	1,011.4	-2.8	17.6	1,295,134.55	3,147,162.97	40.142332	-104.973627	

Survey Report - Geographic

Company:	EnCana Oil & Gas (USA) Inc	Local Co-ordinate Reference:	Well Grant Salisbury 2F-14H-C268
Project:	DJ Wattenberg	TVD Reference:	28.5' KB @ 4914.5ft (Patt 272)
Site:	S14-T2N-R68W (Grant Elmquist/Salisbury/Hurt)	MD Reference:	28.5' KB @ 4914.5ft (Patt 272)
Well:	Grant Salisbury 2F-14H-C268	North Reference:	True
Wellbore:	Hz	Survey Calculation Method:	Minimum Curvature
Design:	FINAL	Database:	USA EDM 5000 Multi Users DB

Survey										
Measured Depth (ft)	Inclination (°)	Azimuth (°)	Vertical Depth (ft)	+N/-S (ft)	+E/-W (ft)	Map Northing (ft)	Map Easting (ft)	Latitude	Longitude	
1,106.0	3.60	119.70	1,105.3	-5.5	22.9	1,295,131.84	3,147,168.21	40.142325	-104.973608	
1,199.0	2.10	110.00	1,198.1	-7.5	27.0	1,295,129.83	3,147,172.36	40.142319	-104.973594	
1,293.0	1.70	102.60	1,292.1	-8.4	30.0	1,295,128.96	3,147,175.34	40.142317	-104.973583	
1,386.0	3.40	109.50	1,385.0	-9.7	33.9	1,295,127.76	3,147,179.30	40.142314	-104.973569	
1,480.0	3.20	106.70	1,478.8	-11.3	39.1	1,295,126.11	3,147,184.45	40.142309	-104.973551	
1,573.0	3.50	115.00	1,571.7	-13.3	44.1	1,295,124.19	3,147,189.52	40.142304	-104.973532	
1,667.0	3.20	109.10	1,665.5	-15.4	49.2	1,295,122.15	3,147,194.61	40.142298	-104.973514	
1,760.0	3.50	119.20	1,758.4	-17.6	54.1	1,295,119.94	3,147,199.55	40.142292	-104.973497	
1,854.0	2.60	130.00	1,852.2	-20.4	58.3	1,295,117.20	3,147,203.71	40.142284	-104.973482	
1,948.0	2.70	123.00	1,946.1	-22.9	61.8	1,295,114.64	3,147,207.21	40.142277	-104.973469	
2,042.0	2.20	113.60	2,040.0	-24.9	65.3	1,295,112.74	3,147,210.74	40.142272	-104.973457	
2,137.0	2.20	116.50	2,135.0	-26.4	68.6	1,295,111.21	3,147,214.05	40.142268	-104.973445	
2,231.0	2.20	110.10	2,228.9	-27.8	71.9	1,295,109.81	3,147,217.36	40.142264	-104.973433	
2,326.0	2.10	113.10	2,323.8	-29.1	75.2	1,295,108.52	3,147,220.69	40.142260	-104.973421	
2,420.0	1.70	111.10	2,417.8	-30.3	78.1	1,295,107.36	3,147,223.58	40.142257	-104.973411	
2,515.0	1.60	110.00	2,512.7	-31.3	80.6	1,295,106.41	3,147,226.14	40.142254	-104.973402	
2,609.0	1.60	106.30	2,606.7	-32.1	83.1	1,295,105.61	3,147,228.64	40.142252	-104.973393	
2,704.0	2.40	111.20	2,701.7	-33.2	86.3	1,295,104.53	3,147,231.78	40.142249	-104.973382	
2,799.0	2.20	100.30	2,796.6	-34.2	89.9	1,295,103.51	3,147,235.43	40.142246	-104.973369	
2,893.0	3.30	100.70	2,890.5	-35.1	94.3	1,295,102.71	3,147,239.87	40.142244	-104.973353	
2,988.0	3.80	118.60	2,985.3	-37.1	99.8	1,295,100.73	3,147,245.33	40.142238	-104.973333	
3,083.0	3.40	115.80	3,080.1	-39.8	105.1	1,295,098.03	3,147,250.65	40.142231	-104.973314	
3,177.0	3.30	123.40	3,173.9	-42.5	109.9	1,295,095.35	3,147,255.43	40.142223	-104.973297	
3,272.0	3.00	123.00	3,268.8	-45.4	114.2	1,295,092.52	3,147,259.82	40.142215	-104.973282	
3,366.0	2.60	127.60	3,362.7	-48.0	118.0	1,295,089.90	3,147,263.58	40.142208	-104.973268	
3,461.0	1.70	134.50	3,457.6	-50.3	120.7	1,295,087.62	3,147,266.31	40.142202	-104.973259	
3,555.0	1.10	102.40	3,551.6	-51.5	122.6	1,295,086.46	3,147,268.19	40.142199	-104.973252	
3,650.0	1.80	86.70	3,646.6	-51.6	125.0	1,295,086.36	3,147,270.57	40.142198	-104.973243	
3,745.0	3.00	97.00	3,741.5	-51.8	128.9	1,295,086.17	3,147,274.53	40.142198	-104.973229	
3,839.0	3.40	104.70	3,835.3	-52.8	134.0	1,295,085.19	3,147,279.68	40.142195	-104.973211	
3,934.0	4.30	104.80	3,930.1	-54.4	140.2	1,295,083.60	3,147,285.85	40.142191	-104.973189	
4,028.0	4.60	117.20	4,023.8	-57.1	147.0	1,295,081.02	3,147,292.63	40.142183	-104.973165	
4,123.0	3.60	123.80	4,118.6	-60.5	152.8	1,295,077.65	3,147,298.52	40.142174	-104.973144	
4,217.0	3.10	134.60	4,212.4	-63.9	157.1	1,295,074.25	3,147,302.80	40.142165	-104.973128	
4,311.0	2.40	154.50	4,306.3	-67.5	159.8	1,295,070.71	3,147,305.48	40.142155	-104.973119	
4,406.0	2.50	155.00	4,401.2	-71.1	161.5	1,295,067.04	3,147,307.23	40.142145	-104.973113	
4,500.0	1.50	149.70	4,495.2	-74.1	163.0	1,295,064.13	3,147,308.73	40.142137	-104.973107	
4,594.0	1.00	92.70	4,589.2	-75.2	164.4	1,295,063.04	3,147,310.18	40.142134	-104.973102	
4,689.0	1.70	75.00	4,684.1	-74.8	166.6	1,295,063.38	3,147,312.37	40.142135	-104.973094	
4,783.0	2.30	66.40	4,778.1	-73.7	169.7	1,295,064.51	3,147,315.44	40.142138	-104.973083	
4,878.0	3.20	69.90	4,873.0	-72.0	173.9	1,295,066.21	3,147,319.66	40.142142	-104.973068	
4,972.0	3.50	75.20	4,966.8	-70.4	179.2	1,295,067.88	3,147,324.89	40.142147	-104.973049	
5,066.0	3.90	92.40	5,060.6	-69.8	185.1	1,295,068.51	3,147,330.86	40.142148	-104.973028	
5,161.0	4.70	101.90	5,155.3	-70.7	192.2	1,295,067.62	3,147,337.90	40.142146	-104.973003	
5,255.0	3.90	114.00	5,249.1	-72.8	198.9	1,295,065.56	3,147,344.60	40.142140	-104.972979	
5,350.0	3.30	140.80	5,343.9	-76.3	203.5	1,295,062.16	3,147,349.30	40.142131	-104.972962	
5,444.0	2.60	131.70	5,437.8	-79.8	206.8	1,295,058.66	3,147,352.62	40.142121	-104.972950	
5,539.0	2.30	136.00	5,532.7	-82.6	209.8	1,295,055.87	3,147,355.57	40.142113	-104.972940	
5,633.0	0.80	125.70	5,626.6	-84.3	211.6	1,295,054.15	3,147,357.43	40.142109	-104.972933	
5,726.0	1.90	85.40	5,719.6	-84.6	213.7	1,295,053.90	3,147,359.49	40.142108	-104.972926	
5,821.0	3.20	79.90	5,814.5	-84.0	217.9	1,295,054.52	3,147,363.67	40.142109	-104.972911	
5,916.0	3.80	91.70	5,909.3	-83.6	223.6	1,295,054.92	3,147,369.42	40.142110	-104.972890	
6,010.0	3.60	104.60	6,003.2	-84.5	229.6	1,295,054.12	3,147,375.40	40.142108	-104.972869	
6,105.0	2.80	99.00	6,098.0	-85.6	234.8	1,295,053.04	3,147,380.58	40.142105	-104.972851	
6,200.0	3.50	103.60	6,192.9	-86.6	239.9	1,295,052.02	3,147,385.70	40.142102	-104.972832	

Survey Report - Geographic

Company:	EnCana Oil & Gas (USA) Inc	Local Co-ordinate Reference:	Well Grant Salisbury 2F-14H-C268
Project:	DJ Wattenberg	TVD Reference:	28.5' KB @ 4914.5ft (Patt 272)
Site:	S14-T2N-R68W (Grant Elmquist/Salisbury/Hurt)	MD Reference:	28.5' KB @ 4914.5ft (Patt 272)
Well:	Grant Salisbury 2F-14H-C268	North Reference:	True
Wellbore:	Hz	Survey Calculation Method:	Minimum Curvature
Design:	FINAL	Database:	USA EDM 5000 Multi Users DB

Survey										
Measured Depth (ft)	Inclination (°)	Azimuth (°)	Vertical Depth (ft)	+N/-S (ft)	+E/-W (ft)	Map Northing (ft)	Map Easting (ft)	Latitude	Longitude	
6,294.0	3.00	101.80	6,286.7	-87.8	245.1	1,295,050.88	3,147,390.90	40.142099	-104.972814	
6,389.0	3.20	104.00	6,381.6	-88.9	250.1	1,295,049.76	3,147,395.92	40.142096	-104.972796	
6,484.0	2.80	96.60	6,476.4	-89.9	255.0	1,295,048.88	3,147,400.80	40.142093	-104.972778	
6,577.0	3.00	23.00	6,569.4	-87.9	258.2	1,295,050.88	3,147,403.99	40.142099	-104.972767	
6,625.0	8.80	357.30	6,617.1	-83.0	258.5	1,295,055.71	3,147,404.28	40.142112	-104.972766	
6,672.0	13.20	357.80	6,663.2	-74.1	258.1	1,295,064.66	3,147,403.86	40.142137	-104.972767	
6,719.0	16.70	350.70	6,708.6	-62.1	256.8	1,295,076.69	3,147,402.49	40.142170	-104.972772	
6,767.0	20.10	345.10	6,754.2	-47.3	253.6	1,295,091.45	3,147,399.16	40.142210	-104.972783	
6,814.0	25.00	343.50	6,797.6	-29.9	248.7	1,295,108.76	3,147,394.16	40.142258	-104.972801	
6,861.0	28.40	343.30	6,839.5	-9.7	242.6	1,295,128.96	3,147,388.00	40.142313	-104.972822	
6,908.0	32.70	348.40	6,880.0	13.5	236.9	1,295,152.08	3,147,382.10	40.142377	-104.972843	
6,955.0	36.60	353.20	6,918.7	39.8	232.7	1,295,178.42	3,147,377.73	40.142449	-104.972858	
7,002.0	40.20	354.70	6,955.5	68.8	229.6	1,295,207.42	3,147,374.50	40.142529	-104.972869	
7,050.0	43.80	0.00	6,991.2	100.9	228.2	1,295,239.47	3,147,372.87	40.142617	-104.972874	
7,097.0	47.60	4.40	7,024.0	134.5	229.5	1,295,273.07	3,147,374.01	40.142709	-104.972869	
7,144.0	51.10	5.00	7,054.6	170.0	232.4	1,295,308.62	3,147,376.72	40.142807	-104.972859	
7,191.0	53.30	4.70	7,083.4	207.0	235.6	1,295,345.64	3,147,379.64	40.142908	-104.972848	
7,238.0	55.30	4.40	7,110.8	245.1	238.6	1,295,383.70	3,147,382.44	40.143013	-104.972837	
7,285.0	57.80	4.30	7,136.7	284.2	241.6	1,295,422.82	3,147,385.18	40.143120	-104.972826	
7,332.0	60.10	4.00	7,161.0	324.3	244.5	1,295,462.99	3,147,387.86	40.143230	-104.972816	
7,380.0	62.60	3.90	7,184.0	366.4	247.4	1,295,505.03	3,147,390.51	40.143346	-104.972805	
7,427.0	64.70	3.40	7,204.9	408.4	250.0	1,295,547.07	3,147,392.94	40.143461	-104.972796	
7,474.0	67.80	3.20	7,223.8	451.3	252.5	1,295,590.03	3,147,395.16	40.143579	-104.972787	
7,521.0	71.70	3.10	7,240.1	495.3	254.9	1,295,634.06	3,147,397.32	40.143700	-104.972778	
7,569.0	75.60	2.90	7,253.6	541.3	257.4	1,295,680.06	3,147,399.45	40.143826	-104.972770	
7,616.0	79.90	3.00	7,263.5	587.2	259.7	1,295,725.93	3,147,401.55	40.143952	-104.972761	
7,651.0	82.70	3.20	7,268.8	621.7	261.6	1,295,760.49	3,147,403.21	40.144047	-104.972755	
7,731.0	88.80	2.50	7,274.8	701.4	265.6	1,295,840.15	3,147,406.70	40.144265	-104.972740	
7,793.0	88.90	2.40	7,276.0	763.3	268.2	1,295,902.10	3,147,408.98	40.144435	-104.972731	
7,887.0	88.60	1.80	7,278.0	857.2	271.6	1,295,996.03	3,147,411.87	40.144693	-104.972719	
7,980.0	88.40	1.80	7,280.5	950.1	274.6	1,296,088.97	3,147,414.24	40.144948	-104.972708	
8,074.0	88.80	1.30	7,282.8	1,044.1	277.1	1,296,182.92	3,147,416.22	40.145206	-104.972699	
8,167.0	89.60	1.80	7,284.1	1,137.0	279.6	1,296,275.89	3,147,418.19	40.145461	-104.972690	
8,261.0	90.20	2.80	7,284.2	1,231.0	283.4	1,296,369.83	3,147,421.40	40.145719	-104.972677	
8,354.0	90.90	2.40	7,283.3	1,323.9	287.6	1,296,462.75	3,147,425.07	40.145974	-104.972661	
8,448.0	91.20	2.60	7,281.6	1,417.8	291.7	1,296,556.67	3,147,428.61	40.146232	-104.972647	
8,541.0	90.10	1.50	7,280.6	1,510.7	295.0	1,296,649.62	3,147,431.39	40.146487	-104.972635	
8,635.0	90.60	0.50	7,280.0	1,604.7	296.7	1,296,743.61	3,147,432.47	40.146745	-104.972629	
8,728.0	90.20	0.30	7,279.3	1,697.7	297.3	1,296,836.61	3,147,432.57	40.147000	-104.972627	
8,822.0	89.30	0.40	7,279.8	1,791.7	297.9	1,296,930.61	3,147,432.58	40.147258	-104.972625	
8,915.0	88.80	0.00	7,281.3	1,884.6	298.2	1,297,023.59	3,147,432.35	40.147514	-104.972623	
9,009.0	90.10	359.90	7,282.2	1,978.6	298.1	1,297,117.59	3,147,431.71	40.147772	-104.972624	
9,103.0	90.30	359.80	7,281.9	2,072.6	297.9	1,297,211.58	3,147,430.91	40.148030	-104.972625	
9,196.0	90.50	359.70	7,281.2	2,165.6	297.5	1,297,304.57	3,147,429.95	40.148285	-104.972626	
9,290.0	90.30	359.10	7,280.6	2,259.6	296.5	1,297,398.56	3,147,428.41	40.148543	-104.972630	
9,383.0	89.60	359.70	7,280.6	2,352.6	295.5	1,297,491.55	3,147,426.89	40.148798	-104.972633	
9,477.0	89.50	0.70	7,281.4	2,446.6	295.9	1,297,585.54	3,147,426.66	40.149056	-104.972632	
9,571.0	89.80	0.20	7,282.0	2,540.6	296.6	1,297,679.54	3,147,426.84	40.149314	-104.972629	
9,666.0	90.00	359.90	7,282.1	2,635.6	296.7	1,297,774.54	3,147,426.35	40.149575	-104.972629	
9,760.0	89.40	359.20	7,282.6	2,729.6	295.9	1,297,868.53	3,147,425.06	40.149833	-104.972632	
9,855.0	90.30	358.90	7,282.9	2,824.6	294.4	1,297,963.50	3,147,422.92	40.150094	-104.972637	
9,949.0	90.40	359.00	7,282.3	2,918.6	292.7	1,298,057.47	3,147,420.64	40.150352	-104.972643	
10,043.0	90.00	358.60	7,282.0	3,012.5	290.7	1,298,151.44	3,147,418.11	40.150610	-104.972650	
10,138.0	90.90	359.10	7,281.2	3,107.5	288.8	1,298,246.40	3,147,415.64	40.150871	-104.972657	
10,232.0	90.80	359.30	7,279.8	3,201.5	287.5	1,298,340.37	3,147,413.77	40.151129	-104.972662	

Survey Report - Geographic

Company:	EnCana Oil & Gas (USA) Inc	Local Co-ordinate Reference:	Well Grant Salisbury 2F-14H-C268
Project:	DJ Wattenberg	TVD Reference:	28.5' KB @ 4914.5ft (Patt 272)
Site:	S14-T2N-R68W (Grant Elmquist/Salisbury/Hurt)	MD Reference:	28.5' KB @ 4914.5ft (Patt 272)
Well:	Grant Salisbury 2F-14H-C268	North Reference:	True
Wellbore:	Hz	Survey Calculation Method:	Minimum Curvature
Design:	FINAL	Database:	USA EDM 5000 Multi Users DB

Survey										
Measured Depth (ft)	Inclination (°)	Azimuth (°)	Vertical Depth (ft)	+N/-S (ft)	+E/-W (ft)	Map Northing (ft)	Map Easting (ft)	Latitude	Longitude	
10,327.0	90.50	358.70	7,278.7	3,296.5	285.8	1,298,435.34	3,147,411.55	40.151389	-104.972668	
10,421.0	90.70	359.90	7,277.8	3,390.5	284.7	1,298,529.32	3,147,409.85	40.151647	-104.972672	
10,515.0	91.00	0.90	7,276.4	3,484.5	285.3	1,298,623.30	3,147,409.94	40.151905	-104.972670	
10,610.0	91.40	0.80	7,274.4	3,579.4	286.7	1,298,718.28	3,147,410.79	40.152166	-104.972665	
10,704.0	90.30	1.90	7,273.0	3,673.4	288.9	1,298,812.25	3,147,412.45	40.152424	-104.972657	
10,798.0	90.20	1.30	7,272.6	3,767.3	291.6	1,298,906.23	3,147,414.51	40.152682	-104.972647	
10,893.0	90.50	1.90	7,272.0	3,862.3	294.2	1,299,001.20	3,147,416.60	40.152943	-104.972638	
10,987.0	89.50	1.90	7,272.0	3,956.3	297.3	1,299,095.17	3,147,419.16	40.153200	-104.972627	
11,082.0	88.80	359.90	7,273.4	4,051.2	298.8	1,299,190.15	3,147,420.09	40.153461	-104.972621	
11,176.0	89.00	359.50	7,275.2	4,145.2	298.3	1,299,284.12	3,147,419.04	40.153719	-104.972623	
11,271.0	88.80	359.20	7,277.0	4,240.2	297.3	1,299,379.09	3,147,417.40	40.153980	-104.972627	
11,364.0	90.50	0.30	7,277.6	4,333.2	296.8	1,299,472.08	3,147,416.44	40.154235	-104.972628	
11,459.0	90.20	2.10	7,277.0	4,428.2	298.8	1,299,567.06	3,147,417.87	40.154496	-104.972621	
11,554.0	90.40	0.10	7,276.5	4,523.1	300.7	1,299,662.05	3,147,419.13	40.154757	-104.972615	
11,648.0	90.90	359.60	7,275.5	4,617.1	300.4	1,299,756.04	3,147,418.32	40.155015	-104.972616	
11,743.0	90.90	0.40	7,274.0	4,712.1	300.4	1,299,851.02	3,147,417.76	40.155275	-104.972616	
11,837.0	90.50	358.30	7,272.8	4,806.1	299.3	1,299,945.00	3,147,416.13	40.155533	-104.972619	
11,932.0	90.60	358.60	7,271.9	4,901.1	296.8	1,300,039.94	3,147,413.00	40.155794	-104.972629	
12,026.0	90.20	357.10	7,271.2	4,995.0	293.3	1,300,133.85	3,147,408.92	40.156052	-104.972641	
12,121.0	89.80	359.00	7,271.2	5,089.9	290.0	1,300,228.77	3,147,405.12	40.156313	-104.972653	
12,214.0	89.60	358.60	7,271.7	5,182.9	288.1	1,300,321.73	3,147,402.62	40.156568	-104.972660	
12,309.0	90.20	358.90	7,271.9	5,277.9	286.0	1,300,416.69	3,147,399.99	40.156829	-104.972667	
12,405.0	90.50	358.10	7,271.3	5,373.8	283.5	1,300,512.64	3,147,396.90	40.157092	-104.972676	
12,499.0	91.10	359.60	7,270.0	5,467.8	281.6	1,300,606.60	3,147,394.46	40.157350	-104.972683	
12,593.0	91.20	359.50	7,268.1	5,561.8	280.9	1,300,700.57	3,147,393.16	40.157608	-104.972685	
12,688.0	90.90	0.80	7,266.4	5,656.8	281.1	1,300,795.55	3,147,392.85	40.157869	-104.972685	
12,782.0	90.90	0.30	7,264.9	5,750.8	282.0	1,300,889.54	3,147,393.19	40.158127	-104.972681	
12,876.0	91.00	0.30	7,263.3	5,844.7	282.5	1,300,983.53	3,147,393.13	40.158385	-104.972680	
12,970.0	91.40	359.60	7,261.4	5,938.7	282.4	1,301,077.50	3,147,392.49	40.158643	-104.972680	
13,064.0	92.70	359.40	7,258.0	6,032.6	281.6	1,301,171.43	3,147,391.11	40.158900	-104.972683	
13,109.0	93.40	359.30	7,255.6	6,077.6	281.1	1,301,216.36	3,147,390.33	40.159024	-104.972685	
Last CES Survey @ 13,109' MD										
13,164.0	93.40	0.34	7,252.4	6,132.5	280.9	1,301,271.26	3,147,389.83	40.159175	-104.972685	
PTB @ 13,164'										

Design Targets										
Target Name	Dip Angle (°)	Dip Dir. (°)	TVD (ft)	+N/-S (ft)	+E/-W (ft)	Northing (ft)	Easting (ft)	Latitude	Longitude	
Grant Salisbury 2F-14H- - hit/miss target - Shape	0.00	0.00	7,249.0	6,196.4	287.9	1,301,335.26	3,147,396.42	40.159350	-104.972660	
- actual wellpath misses target center by 64.4ft at 13164.0ft MD (7252.4 TVD, 6132.5 N, 280.9 E)										
- Point										

Design Annotations					
Measured Depth (ft)	Vertical Depth (ft)	+N/-S (ft)	+E/-W (ft)	Comment	
13,109.0	7,255.6	6,077.6	281.1	Last CES Survey @ 13,109' MD	
13,164.0	7,252.4	6,132.5	280.9	PTB @ 13,164'	

Survey Report - Geographic

Company:	EnCana Oil & Gas (USA) Inc	Local Co-ordinate Reference:	Well Grant Salisbury 2F-14H-C268
Project:	DJ Wattenberg	TVD Reference:	28.5' KB @ 4914.5ft (Patt 272)
Site:	S14-T2N-R68W (Grant Elmquist/Salisbury/Hurt)	MD Reference:	28.5' KB @ 4914.5ft (Patt 272)
Well:	Grant Salisbury 2F-14H-C268	North Reference:	True
Wellbore:	Hz	Survey Calculation Method:	Minimum Curvature
Design:	FINAL	Database:	USA EDM 5000 Multi Users DB

Checked By: _____	Approved By: _____	Date: _____
-------------------	--------------------	-------------