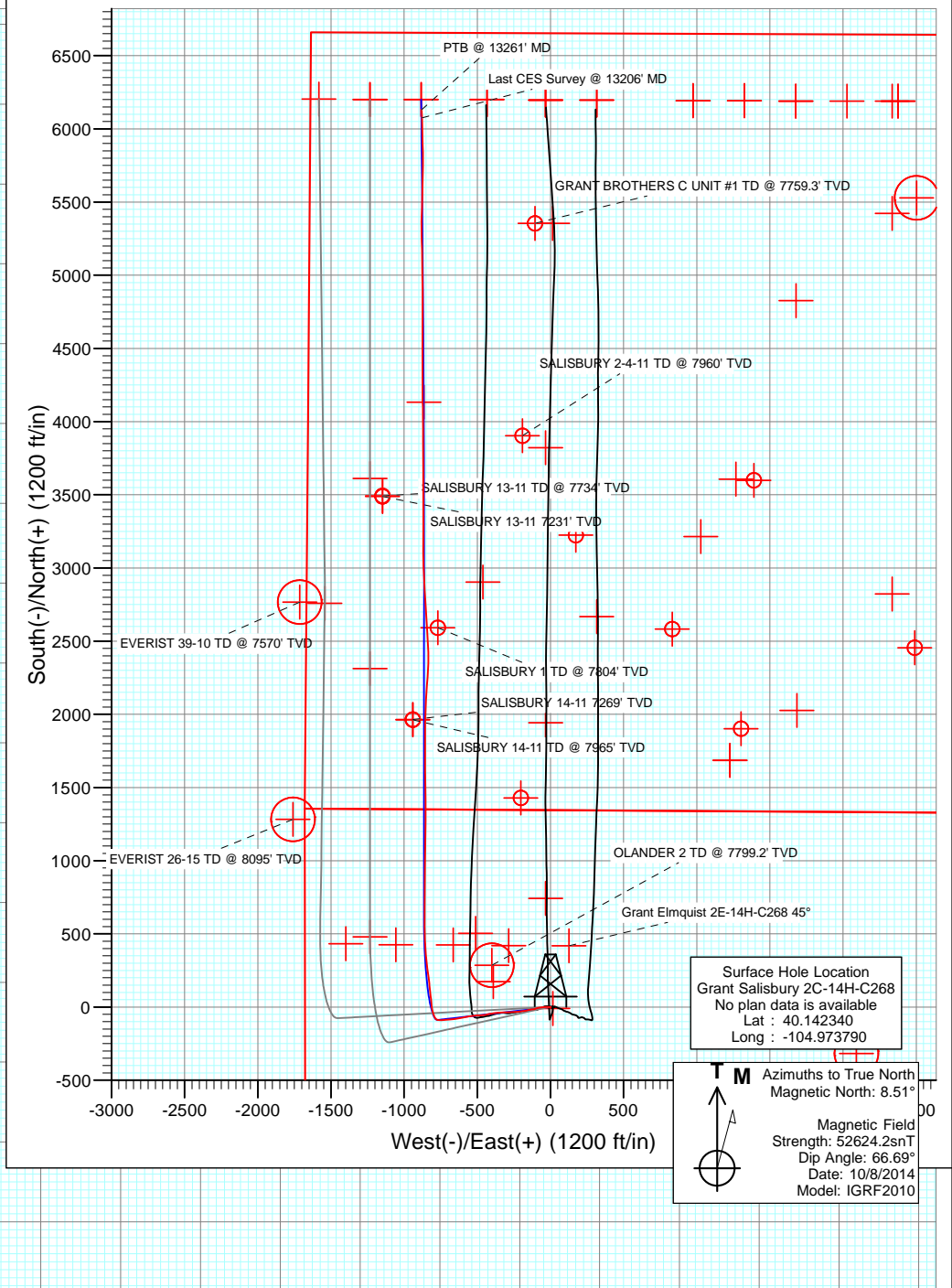
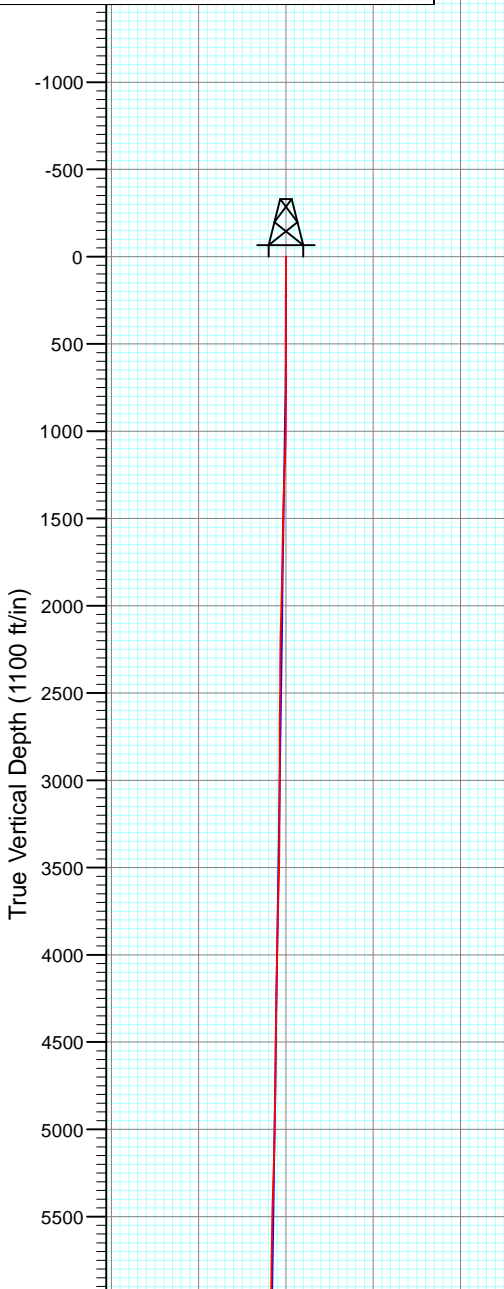




Project: DJ Wattenberg
 Site: S14-T2N-R68W (Grant Elmquist/Salisbury/Hurt)
 Well: Grant Salisbury 2C-14H-C268
 Wellbore: Hz
 Design: Final



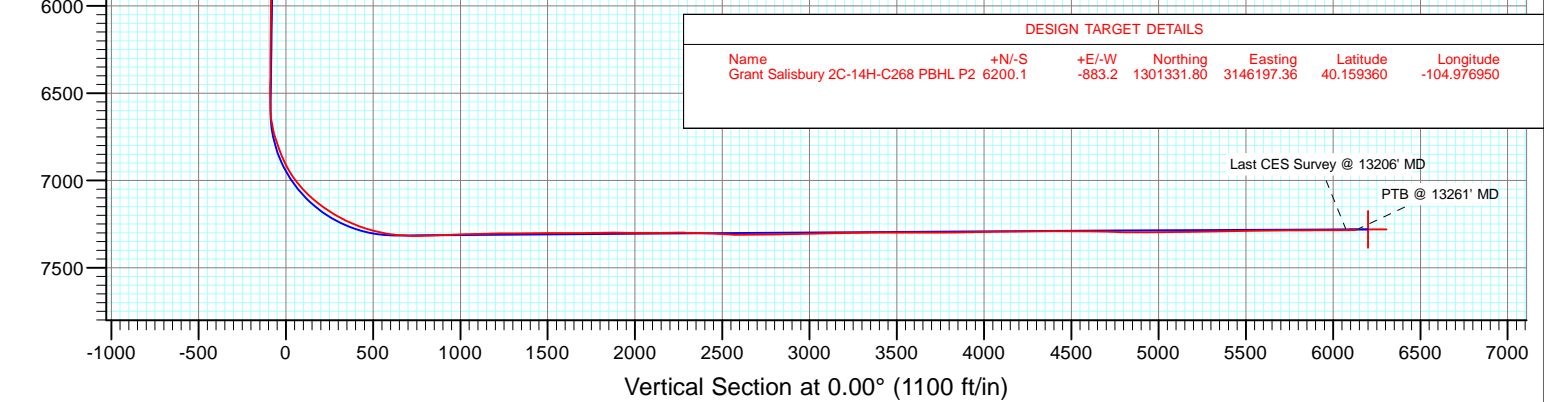
Final
 Grant Salisbury 2C-14H-C268
 323755 145350; LR
 28.5' KB @ 4914.5ft (Patt 272)
 Ground Elevation @ 4886.0
 North American Datum 1983
 Well Grant Salisbury 2C-14H-C268, True North



Surface Hole Location
 Grant Salisbury 2C-14H-C268
 No plan data is available
 Lat : 40.142340
 Long : -104.973790

T M Azimuths to True North
 Magnetic North: 8.51°
 Magnetic Field
 Strength: 52624.2snT
 Dip Angle: 66.69°
 Date: 10/8/2014
 Model: IGRF2010

DESIGN TARGET DETAILS						
Name	+N/-S	+E/-W	Northing	Easting	Latitude	Longitude
Grant Salisbury 2C-14H-C268 PBHL P2	6200.1	-883.2	1301331.80	3146197.36	40.159360	-104.976950



Survey Report

Company: EnCana Oil & Gas (USA) Inc	Local Co-ordinate Reference: Well Grant Salisbury 2C-14H-C268
Project: DJ Wattenberg	TVD Reference: 28.5' KB @ 4914.5ft (Patt 272)
Site: S14-T2N-R68W (Grant Elmquist/Salisbury/Hurt)	MD Reference: 28.5' KB @ 4914.5ft (Patt 272)
Well: Grant Salisbury 2C-14H-C268	North Reference: True
Wellbore: Hz	Survey Calculation Method: Minimum Curvature
Design: Final	Database: USA EDM 5000 Multi Users DB

Project DJ Wattenberg		
Map System: US State Plane 1983	System Datum: Mean Sea Level	
Geo Datum: North American Datum 1983		
Map Zone: Colorado Northern Zone		

Site S14-T2N-R68W (Grant Elmquist/Salisbury/Hurt)				
Site Position:	Northing: 1,295,686.81 ft	Latitude: 40.143850		
From: Lat/Long	Easting: 3,147,060.98 ft	Longitude: -104.973980		
Position Uncertainty: 0.0 ft	Slot Radius: 13.200 in	Grid Convergence: 0.34 °		

Well Grant Salisbury 2C-14H-C268				
Well Position	+N/-S 0.0 ft	Northing: 1,295,137.05 ft	Latitude: 40.142340	
	+E/-W 0.0 ft	Easting: 3,147,117.36 ft	Longitude: -104.973790	
Position Uncertainty	0.0 ft	Wellhead Elevation: ft	Ground Level: 4,886.0 ft	

Wellbore Hz					
Magnetics	Model Name	Sample Date	Declination (°)	Dip Angle (°)	Field Strength (nT)
	IGRF2010	10/8/2014	8.51	66.69	52,624

Design Final				
Audit Notes:				
Version: 1.0	Phase: ACTUAL	Tie On Depth: 0.0		
Vertical Section:	Depth From (TVD) (ft)	+N/-S (ft)	+E/-W (ft)	Direction (°)
	0.0	0.0	0.0	0.00

Survey Program		Date 10/19/2014
From (ft)	To (ft)	Survey (Wellbore)
136.0	13,261.0	Survey #1 (Hz)
		Tool Name Geolink MWD
		Description Geolink MWD

Survey									
Measured Depth (ft)	Inclination (°)	Azimuth (°)	Vertical Depth (ft)	+N/-S (ft)	+E/-W (ft)	Vertical Section (ft)	Dogleg Rate (°/100ft)	Build Rate (°/100ft)	Formations / Comments
0.0	0.00	0.00	0.0	0.0	0.0	0.0	0.00	0.00	
136.0	0.50	132.20	136.0	-0.4	0.4	-0.4	0.37	0.37	
229.0	0.40	119.70	229.0	-0.8	1.0	-0.8	0.15	-0.11	
323.0	0.10	123.60	323.0	-1.0	1.4	-1.0	0.32	-0.32	
416.0	0.20	258.30	416.0	-1.1	1.3	-1.1	0.30	0.11	
510.0	1.60	273.90	510.0	-1.1	-0.2	-1.1	1.50	1.49	
603.0	3.90	282.40	602.9	-0.3	-4.6	-0.3	2.50	2.47	
697.0	6.00	272.90	696.5	0.6	-12.6	0.6	2.39	2.23	
791.0	8.00	274.20	789.8	1.4	-24.0	1.4	2.13	2.13	
876.0	9.10	263.10	873.9	1.0	-36.6	1.0	2.33	1.29	
984.0	9.70	262.70	980.4	-1.2	-54.1	-1.2	0.56	0.56	
1,077.0	9.70	262.50	1,072.1	-3.2	-69.6	-3.2	0.04	0.00	
1,171.0	8.40	257.60	1,164.9	-5.7	-84.2	-5.7	1.61	-1.38	

Survey Report

Company:	EnCana Oil & Gas (USA) Inc	Local Co-ordinate Reference:	Well Grant Salisbury 2C-14H-C268
Project:	DJ Wattenberg	TD Reference:	28.5' KB @ 4914.5ft (Patt 272)
Site:	S14-T2N-R68W (Grant Elmquist/Salisbury/Hurt)	MVD Reference:	28.5' KB @ 4914.5ft (Patt 272)
Well:	Grant Salisbury 2C-14H-C268	North Reference:	True
Wellbore:	Hz	Survey Calculation Method:	Minimum Curvature
Design:	Final	Database:	USA EDM 5000 Multi Users DB

Survey									
Measured Depth (ft)	Inclination (°)	Azimuth (°)	Vertical Depth (ft)	+N/-S (ft)	+E/-W (ft)	Vertical Section (ft)	Dogleg Rate (°/100ft)	Build Rate (°/100ft)	Formations / Comments
1,264.0	6.90	252.10	1,257.1	-8.9	-96.2	-8.9	1.79	-1.61	
1,358.0	6.20	244.70	1,350.5	-12.8	-106.1	-12.8	1.17	-0.74	
1,452.0	5.30	263.60	1,444.0	-15.4	-115.0	-15.4	2.22	-0.96	
1,545.0	6.60	265.80	1,536.5	-16.3	-124.6	-16.3	1.42	1.40	
1,639.0	6.40	262.70	1,629.9	-17.4	-135.2	-17.4	0.43	-0.21	
1,732.0	6.20	258.40	1,722.3	-19.0	-145.3	-19.0	0.55	-0.22	
1,826.0	6.20	253.90	1,815.8	-21.5	-155.1	-21.5	0.52	0.00	
1,920.0	6.40	256.20	1,909.2	-24.1	-165.1	-24.1	0.34	0.21	
2,013.0	8.20	262.50	2,001.5	-26.2	-176.7	-26.2	2.12	1.94	
2,107.0	8.00	259.30	2,094.5	-28.3	-189.8	-28.3	0.52	-0.21	
2,200.0	7.70	260.80	2,186.7	-30.5	-202.3	-30.5	0.39	-0.32	
2,295.0	8.00	264.60	2,280.8	-32.2	-215.1	-32.2	0.63	0.32	
2,390.0	7.60	271.00	2,374.9	-32.7	-228.0	-32.7	1.01	-0.42	
2,484.0	7.60	268.80	2,468.1	-32.7	-240.4	-32.7	0.31	0.00	
2,578.0	7.40	264.20	2,561.3	-33.4	-252.7	-33.4	0.67	-0.21	
2,674.0	7.20	260.80	2,656.5	-35.0	-264.8	-35.0	0.50	-0.21	
2,769.0	7.20	273.20	2,750.7	-35.6	-276.6	-35.6	1.63	0.00	
2,863.0	6.90	270.00	2,844.0	-35.3	-288.1	-35.3	0.53	-0.32	
2,957.0	6.40	268.10	2,937.4	-35.5	-299.0	-35.5	0.58	-0.53	
3,052.0	5.60	264.80	3,031.9	-36.1	-308.9	-36.1	0.92	-0.84	
3,147.0	7.10	268.80	3,126.3	-36.6	-319.4	-36.6	1.65	1.58	
3,241.0	8.00	272.00	3,219.5	-36.5	-331.7	-36.5	1.06	0.96	
3,335.0	7.60	266.20	3,312.6	-36.7	-344.5	-36.7	0.94	-0.43	
3,430.0	7.10	260.80	3,406.8	-38.1	-356.5	-38.1	0.90	-0.53	
3,524.0	7.90	262.90	3,500.0	-39.8	-368.7	-39.8	0.90	0.85	
3,619.0	7.40	259.60	3,594.2	-41.7	-381.2	-41.7	0.70	-0.53	
3,713.0	6.80	260.90	3,687.5	-43.7	-392.6	-43.7	0.66	-0.64	
3,808.0	8.20	260.70	3,781.6	-45.7	-404.9	-45.7	1.47	1.47	
3,902.0	7.60	259.10	3,874.8	-47.9	-417.6	-47.9	0.68	-0.64	
3,997.0	7.10	255.70	3,969.0	-50.6	-429.4	-50.6	0.70	-0.53	
4,091.0	8.10	263.50	4,062.1	-52.7	-441.7	-52.7	1.53	1.06	
4,186.0	7.30	264.20	4,156.3	-54.1	-454.3	-54.1	0.85	-0.84	
4,280.0	6.90	263.60	4,249.6	-55.3	-465.9	-55.3	0.43	-0.43	
4,375.0	7.70	267.10	4,343.8	-56.3	-477.9	-56.3	0.96	0.84	
4,470.0	7.50	265.10	4,438.0	-57.1	-490.4	-57.1	0.35	-0.21	
4,565.0	7.20	266.90	4,532.2	-58.0	-502.5	-58.0	0.40	-0.32	
4,659.0	6.50	264.30	4,625.5	-58.8	-513.7	-58.8	0.81	-0.74	
4,753.0	7.70	264.20	4,718.8	-60.0	-525.3	-60.0	1.28	1.28	
4,848.0	7.60	264.30	4,812.9	-61.3	-537.9	-61.3	0.11	-0.11	
4,942.0	7.50	262.80	4,906.1	-62.7	-550.1	-62.7	0.24	-0.11	
5,037.0	6.90	263.00	5,000.4	-64.1	-561.9	-64.1	0.63	-0.63	
5,131.0	7.60	258.50	5,093.6	-66.1	-573.6	-66.1	0.96	0.74	
5,226.0	7.10	254.70	5,187.8	-68.9	-585.5	-68.9	0.73	-0.53	
5,320.0	8.10	260.00	5,281.0	-71.6	-597.6	-71.6	1.30	1.06	
5,415.0	7.40	255.70	5,375.2	-74.2	-610.1	-74.2	0.96	-0.74	
5,509.0	8.50	262.00	5,468.3	-76.7	-622.9	-76.7	1.49	1.17	
5,604.0	7.40	258.80	5,562.3	-78.9	-635.8	-78.9	1.25	-1.16	
5,698.0	7.30	264.40	5,655.6	-80.6	-647.7	-80.6	0.77	-0.11	
5,793.0	6.50	259.40	5,749.9	-82.2	-659.0	-82.2	1.05	-0.84	
5,888.0	7.40	266.20	5,844.2	-83.6	-670.4	-83.6	1.28	0.95	
5,982.0	7.10	265.60	5,937.4	-84.4	-682.2	-84.4	0.33	-0.32	
6,077.0	7.70	262.60	6,031.6	-85.7	-694.4	-85.7	0.75	0.63	
6,171.0	8.00	266.60	6,124.8	-86.9	-707.1	-86.9	0.66	0.32	

Survey Report

Company:	EnCana Oil & Gas (USA) Inc	Local Co-ordinate Reference:	Well Grant Salisbury 2C-14H-C268
Project:	DJ Wattenberg	TD Reference:	28.5' KB @ 4914.5ft (Patt 272)
Site:	S14-T2N-R68W (Grant Elmquist/Salisbury/Hurt)	MD Reference:	28.5' KB @ 4914.5ft (Patt 272)
Well:	Grant Salisbury 2C-14H-C268	North Reference:	True
Wellbore:	Hz	Survey Calculation Method:	Minimum Curvature
Design:	Final	Database:	USA EDM 5000 Multi Users DB

Survey									
Measured Depth (ft)	Inclination (°)	Azimuth (°)	Vertical Depth (ft)	+N/-S (ft)	+E/-W (ft)	Vertical Section (ft)	Dogleg Rate (°/100ft)	Build Rate (°/100ft)	Formations / Comments
6,266.0	7.30	263.60	6,218.9	-88.0	-719.7	-88.0	0.85	-0.74	
6,360.0	7.30	269.30	6,312.2	-88.7	-731.6	-88.7	0.77	0.00	
6,455.0	7.40	265.90	6,406.4	-89.2	-743.8	-89.2	0.47	0.11	
6,550.0	8.70	270.80	6,500.4	-89.6	-757.1	-89.6	1.55	1.37	
6,644.0	8.40	277.30	6,593.4	-88.6	-771.0	-88.6	1.08	-0.32	
6,692.0	10.90	306.20	6,640.7	-85.5	-778.1	-85.5	11.19	5.21	
6,739.0	13.70	323.80	6,686.7	-78.3	-785.0	-78.3	9.89	5.96	
6,786.0	17.10	334.20	6,732.0	-67.6	-791.3	-67.6	9.29	7.23	
6,833.0	19.50	339.80	6,776.6	-54.0	-797.0	-54.0	6.32	5.11	
6,881.0	21.40	341.20	6,821.6	-38.2	-802.6	-38.2	4.09	3.96	
6,928.0	23.30	348.50	6,865.1	-21.0	-807.2	-21.0	7.15	4.04	
6,976.0	26.40	353.90	6,908.6	-1.1	-810.3	-1.1	8.00	6.46	
7,023.0	31.10	354.80	6,949.8	21.4	-812.5	21.4	10.04	10.00	
7,070.0	36.30	353.60	6,988.9	47.4	-815.1	47.4	11.15	11.06	
7,117.0	39.90	352.60	7,025.9	76.1	-818.6	76.1	7.77	7.66	
7,164.0	44.10	353.60	7,060.8	107.4	-822.4	107.4	9.05	8.94	
7,212.0	48.10	354.10	7,094.1	141.7	-826.1	141.7	8.37	8.33	
7,259.0	51.40	353.00	7,124.4	177.4	-830.1	177.4	7.24	7.02	
7,306.0	54.10	352.00	7,152.9	214.5	-835.0	214.5	5.99	5.74	
7,353.0	58.00	352.80	7,179.1	253.1	-840.2	253.1	8.42	8.30	
7,401.0	60.40	353.50	7,203.7	294.0	-845.1	294.0	5.15	5.00	
7,448.0	63.50	354.60	7,225.8	335.3	-849.4	335.3	6.91	6.59	
7,496.0	66.90	355.70	7,245.9	378.7	-853.0	378.7	7.38	7.08	
7,543.0	70.00	356.60	7,263.2	422.3	-856.0	422.3	6.83	6.60	
7,590.0	73.00	358.10	7,278.1	466.8	-858.0	466.8	7.06	6.38	
7,637.0	76.00	359.50	7,290.7	512.1	-859.0	512.1	7.00	6.38	
7,685.0	79.00	359.70	7,301.1	559.0	-859.3	559.0	6.26	6.25	
7,732.0	82.40	0.20	7,308.7	605.3	-859.3	605.3	7.31	7.23	
7,751.0	84.60	0.10	7,310.8	624.2	-859.3	624.2	11.59	11.58	
7,883.0	89.50	359.50	7,317.6	756.0	-859.8	756.0	3.74	3.71	
7,977.0	92.90	1.50	7,315.6	850.0	-858.9	850.0	4.20	3.62	
8,070.0	93.00	0.40	7,310.8	942.8	-857.4	942.8	1.19	0.11	
8,164.0	91.00	1.10	7,307.6	1,036.8	-856.2	1,036.8	2.25	-2.13	
8,257.0	91.20	0.60	7,305.8	1,129.7	-854.8	1,129.7	0.58	0.22	
8,351.0	91.20	0.10	7,303.8	1,223.7	-854.2	1,223.7	0.53	0.00	
8,444.0	89.90	359.80	7,302.9	1,316.7	-854.3	1,316.7	1.43	-1.40	
8,538.0	91.00	0.20	7,302.2	1,410.7	-854.3	1,410.7	1.25	1.17	
8,631.0	89.80	359.90	7,301.5	1,503.7	-854.2	1,503.7	1.33	-1.29	
8,725.0	90.20	359.30	7,301.5	1,597.7	-854.9	1,597.7	0.77	0.43	
8,819.0	90.50	358.60	7,301.0	1,691.7	-856.6	1,691.7	0.81	0.32	
8,912.0	91.00	359.50	7,299.7	1,784.6	-858.1	1,784.6	1.11	0.54	
9,006.0	89.50	0.40	7,299.3	1,878.6	-858.2	1,878.6	1.86	-1.60	
9,099.0	89.90	2.40	7,299.8	1,971.6	-855.9	1,971.6	2.19	0.43	
9,193.0	90.00	4.20	7,299.9	2,065.4	-850.5	2,065.4	1.92	0.11	
9,288.0	90.00	2.70	7,299.9	2,160.3	-844.8	2,160.3	1.58	0.00	
9,382.0	90.50	3.90	7,299.5	2,254.1	-839.4	2,254.1	1.38	0.53	
9,476.0	88.20	1.60	7,300.6	2,348.0	-834.9	2,348.0	3.46	-2.45	
9,571.0	87.30	357.50	7,304.3	2,442.9	-835.6	2,442.9	4.42	-0.95	
9,665.0	86.90	356.50	7,309.0	2,536.6	-840.6	2,536.6	1.14	-0.43	
9,760.0	89.50	356.70	7,312.0	2,631.4	-846.2	2,631.4	2.74	2.74	
9,854.0	91.40	356.60	7,311.3	2,725.2	-851.7	2,725.2	2.02	2.02	
9,949.0	91.60	356.70	7,308.8	2,820.1	-857.2	2,820.1	0.24	0.21	
10,043.0	91.90	356.30	7,305.9	2,913.8	-863.0	2,913.8	0.53	0.32	

Survey Report

Company:	EnCana Oil & Gas (USA) Inc	Local Co-ordinate Reference:	Well Grant Salisbury 2C-14H-C268
Project:	DJ Wattenberg	TVD Reference:	28.5' KB @ 4914.5ft (Patt 272)
Site:	S14-T2N-R68W (Grant Elmquist/Salisbury/Hurt)	MD Reference:	28.5' KB @ 4914.5ft (Patt 272)
Well:	Grant Salisbury 2C-14H-C268	North Reference:	True
Wellbore:	Hz	Survey Calculation Method:	Minimum Curvature
Design:	Final	Database:	USA EDM 5000 Multi Users DB

Survey									
Measured Depth (ft)	Inclination (°)	Azimuth (°)	Vertical Depth (ft)	+N/-S (ft)	+E/-W (ft)	Vertical Section (ft)	Dogleg Rate (°/100ft)	Build Rate (°/100ft)	Formations / Comments
10,138.0	91.00	358.60	7,303.5	3,008.7	-867.2	3,008.7	2.60	-0.95	
10,232.0	89.90	358.30	7,302.8	3,102.7	-869.7	3,102.7	1.21	-1.17	
10,326.0	90.90	1.00	7,302.1	3,196.7	-870.3	3,196.7	3.06	1.06	
10,421.0	91.20	1.70	7,300.4	3,291.6	-868.1	3,291.6	0.80	0.32	
10,515.0	90.30	359.40	7,299.2	3,385.6	-867.2	3,385.6	2.63	-0.96	
10,610.0	89.60	358.80	7,299.2	3,480.6	-868.7	3,480.6	0.97	-0.74	
10,704.0	90.10	359.90	7,299.5	3,574.6	-869.7	3,574.6	1.29	0.53	
10,798.0	90.50	0.10	7,299.0	3,668.6	-869.7	3,668.6	0.48	0.43	
10,893.0	89.70	359.60	7,298.8	3,763.6	-870.0	3,763.6	0.99	-0.84	
10,987.0	91.50	359.90	7,297.8	3,857.6	-870.4	3,857.6	1.94	1.91	
11,082.0	91.80	359.50	7,295.1	3,952.5	-870.9	3,952.5	0.53	0.32	
11,176.0	90.40	359.80	7,293.3	4,046.5	-871.5	4,046.5	1.52	-1.49	
11,271.0	90.20	358.80	7,292.8	4,141.5	-872.6	4,141.5	1.07	-0.21	
11,364.0	89.90	0.30	7,292.7	4,234.5	-873.3	4,234.5	1.64	-0.32	
11,459.0	91.20	359.80	7,291.8	4,329.5	-873.3	4,329.5	1.47	1.37	
11,554.0	89.90	359.50	7,290.9	4,424.5	-873.8	4,424.5	1.40	-1.37	
11,648.0	91.10	359.50	7,290.1	4,518.5	-874.7	4,518.5	1.28	1.28	
11,743.0	88.50	0.90	7,290.4	4,613.4	-874.3	4,613.4	3.11	-2.74	
11,837.0	88.30	0.70	7,293.0	4,707.4	-873.0	4,707.4	0.30	-0.21	
11,932.0	87.70	359.80	7,296.4	4,802.3	-872.6	4,802.3	1.14	-0.63	
12,026.0	90.60	359.00	7,297.7	4,896.3	-873.6	4,896.3	3.20	3.09	
12,121.0	91.10	359.00	7,296.3	4,991.3	-875.2	4,991.3	0.53	0.53	
12,214.0	90.80	359.50	7,294.8	5,084.3	-876.5	5,084.3	0.63	-0.32	
12,309.0	90.30	358.80	7,293.9	5,179.3	-877.9	5,179.3	0.91	-0.53	
12,404.0	90.20	357.70	7,293.5	5,274.2	-880.8	5,274.2	1.16	-0.11	
12,499.0	91.30	2.20	7,292.2	5,369.2	-880.9	5,369.2	4.88	1.16	
12,593.0	91.30	1.80	7,290.1	5,463.1	-877.6	5,463.1	0.43	0.00	
12,688.0	91.70	1.40	7,287.6	5,558.0	-874.9	5,558.0	0.60	0.42	
12,782.0	90.00	0.90	7,286.2	5,652.0	-873.0	5,652.0	1.89	-1.81	
12,877.0	90.50	0.20	7,285.8	5,747.0	-872.1	5,747.0	0.91	0.53	
12,971.0	90.10	359.60	7,285.3	5,841.0	-872.3	5,841.0	0.77	-0.43	
13,065.0	90.40	358.60	7,284.9	5,935.0	-873.8	5,935.0	1.11	0.32	
13,160.0	90.20	358.00	7,284.4	6,029.9	-876.6	6,029.9	0.67	-0.21	
13,206.0	90.30	358.20	7,284.2	6,075.9	-878.1	6,075.9	0.49	0.22	Last CES Survey @ 13206' MD
13,261.0	90.30	358.20	7,283.9	6,130.8	-879.8	6,130.8	0.00	0.00	PTB @ 13261' MD

Survey Report

Company: EnCana Oil & Gas (USA) Inc	Local Co-ordinate Reference: Well Grant Salisbury 2C-14H-C268
Project: DJ Wattenberg	TVD Reference: 28.5' KB @ 4914.5ft (Patt 272)
Site: S14-T2N-R68W (Grant Elmquist/Salisbury/Hurt)	MD Reference: 28.5' KB @ 4914.5ft (Patt 272)
Well: Grant Salisbury 2C-14H-C268	North Reference: True
Wellbore: Hz	Survey Calculation Method: Minimum Curvature
Design: Final	Database: USA EDM 5000 Multi Users DB

Targets										
Target Name	Dip Angle	Dip Dir.	TVD	+N/-S	+E/-W	Northing	Easting	Latitude	Longitude	
- hit/miss target	(°)	(°)	(ft)	(ft)	(ft)	(ft)	(ft)			
- Shape										
Grant Salisbury 2C-14H- - survey misses target center by 69.6ft at 13261.0ft MD (7283.9 TVD, 6130.8 N, -879.8 E) - Point	0.00	0.00	7,289.5	6,200.1	-883.2	1,301,331.80	3,146,197.36	40.159360	-104.976950	
Grant Salisbury 2C-14H- - survey misses target center by 69.5ft at 13261.0ft MD (7283.9 TVD, 6130.8 N, -879.8 E) - Point	0.00	0.00	7,280.0	6,200.1	-883.2	1,301,331.80	3,146,197.36	40.159360	-104.976950	
Grant Salisbury 2C-14H- - survey misses target center by 7.8ft at 11262.3ft MD (7292.8 TVD, 4132.8 N, -872.4 E) - Point	0.00	0.00	7,290.0	4,132.8	-865.2	1,299,264.67	3,146,227.67	40.153685	-104.976885	

Survey Annotations					
Measured Depth	Vertical Depth	Local Coordinates		Comment	
(ft)	(ft)	+N/-S	+E/-W		
		(ft)	(ft)		
13,206.0	7,284.2	6,075.9	-878.1	Last CES Survey @ 13206' MD	
13,261.0	7,283.9	6,130.8	-879.8	PTB @ 13261' MD	

Checked By: _____	Approved By: _____	Date: _____
-------------------	--------------------	-------------