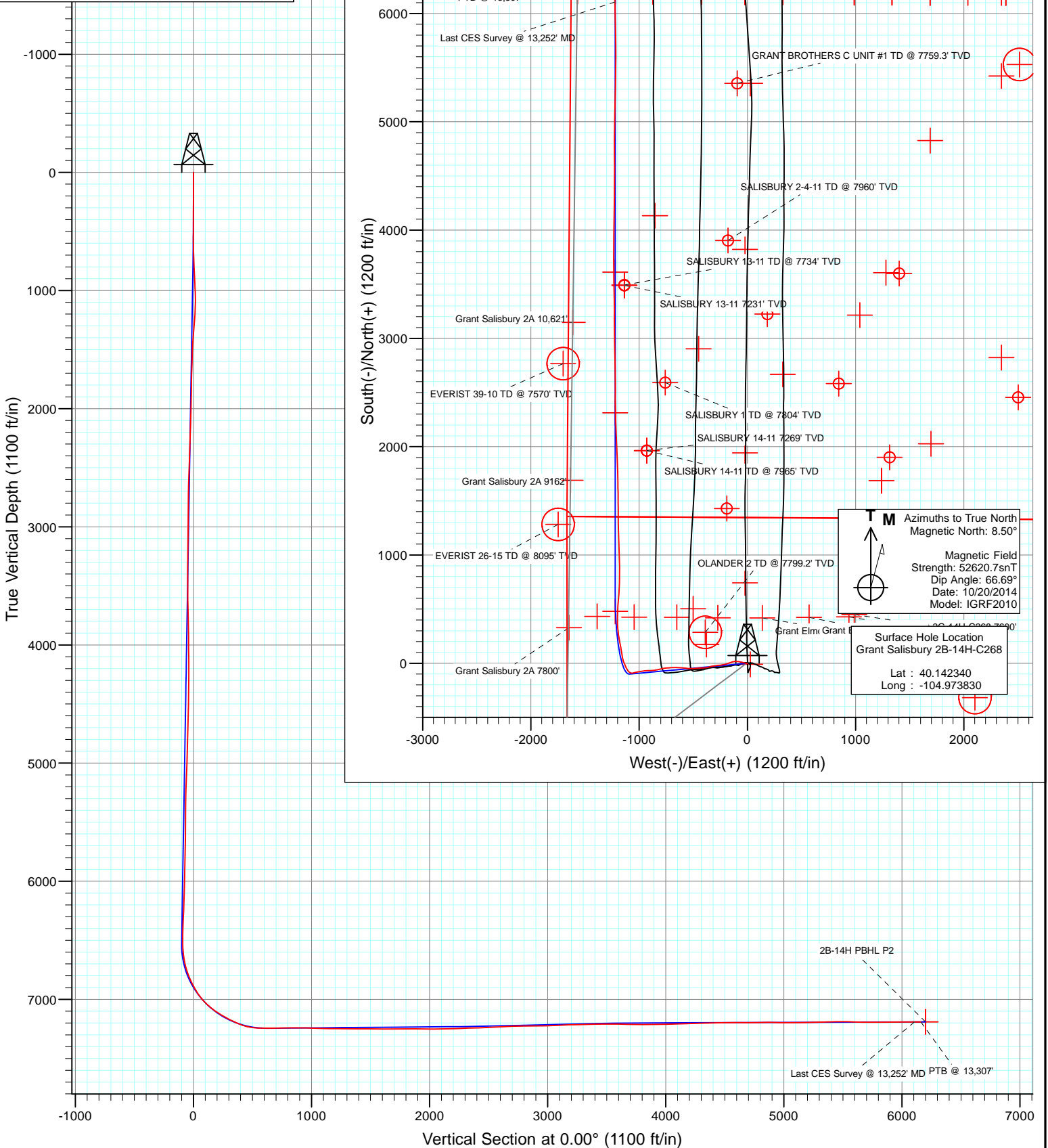




Project: DJ Wattenberg
 Site: S14-T2N-R68W (Grant Elmquist/Salisbury/Hurt)
 Well: Grant Salisbury 2B-14H-C268
 Wellbore: Hz
 Design: FINAL



FINAL
 Grant Salisbury 2B-14H-C268
 323855 145373; LR
 28.5' KB @ 4914.5ft (Patt 272)
 Ground Elevation @ 4886.0
 North American Datum 1983
 Well Grant Salisbury 2B-14H-C268, True North



Survey Report

Company: EnCana Oil & Gas (USA) Inc	Local Co-ordinate Reference: Well Grant Salisbury 2B-14H-C268
Project: DJ Wattenberg	TVD Reference: 28.5' KB @ 4914.5ft (Patt 272)
Site: S14-T2N-R68W (Grant Elmquist/Salisbury/Hurt)	MD Reference: 28.5' KB @ 4914.5ft (Patt 272)
Well: Grant Salisbury 2B-14H-C268	North Reference: True
Wellbore: Hz	Survey Calculation Method: Minimum Curvature
Design: FINAL	Database: USA EDM 5000 Multi Users DB

Project DJ Wattenberg		
Map System: US State Plane 1983	System Datum:	Mean Sea Level
Geo Datum: North American Datum 1983		
Map Zone: Colorado Northern Zone		

Site S14-T2N-R68W (Grant Elmquist/Salisbury/Hurt)				
Site Position:	Northing:	1,295,686.81 ft	Latitude:	40.143850
From: Lat/Long	Easting:	3,147,060.98 ft	Longitude:	-104.973980
Position Uncertainty: 0.0 ft	Slot Radius:	13.200 in	Grid Convergence:	0.34 °

Well Grant Salisbury 2B-14H-C268				
Well Position	+N/-S	0.0 ft	Northing:	1,295,136.98 ft
	+E/-W	0.0 ft	Easting:	3,147,106.18 ft
Position Uncertainty		0.0 ft	Wellhead Elevation:	ft
			Latitude:	40.142340
			Longitude:	-104.973830
			Ground Level:	4,886.0 ft

Wellbore Hz					
Magnetics	Model Name	Sample Date	Declination (°)	Dip Angle (°)	Field Strength (nT)
	IGRF2010	10/20/2014	8.50	66.69	52,621

Design FINAL				
Audit Notes:				
Version: 1.0	Phase:	ACTUAL	Tie On Depth:	0.0
Vertical Section:	Depth From (TVD) (ft)	+N/-S (ft)	+E/-W (ft)	Direction (°)
	0.0	0.0	0.0	0.00

Survey Program		Date 11/3/2014
From (ft)	To (ft)	Survey (Wellbore)
136.0	13,307.0	Survey #1 (Hz)
		Tool Name
		Geolink MWD
		Description
		Geolink MWD

Survey									
Measured Depth (ft)	Inclination (°)	Azimuth (°)	Vertical Depth (ft)	+N/-S (ft)	+E/-W (ft)	Vertical Section (ft)	Dogleg Rate (°/100ft)	Build Rate (°/100ft)	Formations / Comments
0.0	0.00	0.00	0.0	0.0	0.0	0.0	0.00	0.00	
136.0	0.10	32.10	136.0	0.1	0.1	0.1	0.07	0.07	
229.0	0.70	258.80	229.0	0.1	-0.5	0.1	0.83	0.65	
323.0	0.90	230.40	323.0	-0.5	-1.6	-0.5	0.47	0.21	
416.0	1.40	278.30	416.0	-0.8	-3.3	-0.8	1.12	0.54	
510.0	2.60	264.90	509.9	-0.8	-6.5	-0.8	1.36	1.28	
603.0	4.70	278.20	602.7	-0.5	-12.4	-0.5	2.42	2.26	
697.0	7.00	285.80	696.2	1.6	-21.7	1.6	2.58	2.45	
790.0	9.10	286.20	788.3	5.2	-34.2	5.2	2.26	2.26	
874.0	12.20	282.10	870.9	8.9	-49.3	8.9	3.80	3.69	
981.0	14.80	280.10	974.9	13.7	-73.8	13.7	2.47	2.43	
1,075.0	16.60	273.80	1,065.4	16.7	-99.0	16.7	2.63	1.91	
1,168.0	16.50	261.50	1,154.6	15.6	-125.4	15.6	3.76	-0.11	

Survey Report

Company:	EnCana Oil & Gas (USA) Inc	Local Co-ordinate Reference:	Well Grant Salisbury 2B-14H-C268
Project:	DJ Wattenberg	TD Reference:	28.5' KB @ 4914.5ft (Patt 272)
Site:	S14-T2N-R68W (Grant Elmquist/Salisbury/Hurt)	MVD Reference:	28.5' KB @ 4914.5ft (Patt 272)
Well:	Grant Salisbury 2B-14H-C268	North Reference:	True
Wellbore:	Hz	Survey Calculation Method:	Minimum Curvature
Design:	FINAL	Database:	USA EDM 5000 Multi Users DB

Survey									
Measured Depth (ft)	Inclination (°)	Azimuth (°)	Vertical Depth (ft)	+N/-S (ft)	+E/-W (ft)	Vertical Section (ft)	Dogleg Rate (°/100ft)	Build Rate (°/100ft)	Formations / Comments
1,262.0	14.60	251.70	1,245.1	9.9	-149.8	9.9	3.44	-2.02	
1,355.0	13.30	250.60	1,335.4	2.7	-171.0	2.7	1.43	-1.40	
1,449.0	10.60	245.60	1,427.3	-4.5	-189.1	-4.5	3.07	-2.87	
1,543.0	8.40	260.40	1,520.1	-9.2	-203.8	-9.2	3.48	-2.34	
1,636.0	9.50	259.20	1,611.9	-11.8	-218.0	-11.8	1.20	1.18	
1,730.0	9.10	255.50	1,704.7	-15.1	-232.8	-15.1	0.77	-0.43	
1,823.0	8.80	269.10	1,796.6	-17.0	-247.1	-17.0	2.29	-0.32	
1,917.0	10.80	262.80	1,889.2	-18.2	-263.0	-18.2	2.41	2.13	
2,010.0	11.00	260.40	1,980.5	-20.8	-280.4	-20.8	0.53	0.22	
2,104.0	9.80	265.20	2,073.0	-23.0	-297.2	-23.0	1.57	-1.28	
2,197.0	10.20	261.50	2,164.6	-24.9	-313.2	-24.9	0.81	0.43	
2,292.0	8.40	258.80	2,258.3	-27.5	-328.3	-27.5	1.95	-1.89	
2,386.0	8.40	254.00	2,351.3	-30.7	-341.7	-30.7	0.75	0.00	
2,480.0	8.20	250.80	2,444.3	-34.8	-354.6	-34.8	0.54	-0.21	
2,575.0	8.00	258.10	2,538.4	-38.4	-367.5	-38.4	1.10	-0.21	
2,670.0	9.50	263.20	2,632.3	-40.7	-381.7	-40.7	1.78	1.58	
2,764.0	9.80	263.20	2,724.9	-42.5	-397.4	-42.5	0.32	0.32	
2,859.0	10.10	268.20	2,818.5	-43.7	-413.7	-43.7	0.96	0.32	
2,953.0	11.40	269.80	2,910.9	-44.0	-431.3	-44.0	1.42	1.38	
3,048.0	10.90	267.30	3,004.1	-44.5	-449.6	-44.5	0.73	-0.53	
3,143.0	10.40	266.00	3,097.4	-45.5	-467.2	-45.5	0.58	-0.53	
3,237.0	10.20	260.50	3,189.9	-47.5	-483.8	-47.5	1.07	-0.21	
3,332.0	9.80	268.90	3,283.5	-49.0	-500.2	-49.0	1.59	-0.42	
3,426.0	10.60	273.50	3,376.0	-48.7	-516.8	-48.7	1.21	0.85	
3,521.0	9.80	268.80	3,469.5	-48.3	-533.6	-48.3	1.21	-0.84	
3,615.0	10.90	274.60	3,562.0	-47.7	-550.5	-47.7	1.61	1.17	
3,710.0	9.80	274.90	3,655.4	-46.3	-567.5	-46.3	1.16	-1.16	
3,804.0	11.00	277.00	3,747.9	-44.6	-584.4	-44.6	1.34	1.28	
3,899.0	10.30	275.90	3,841.2	-42.6	-601.8	-42.6	0.77	-0.74	
3,994.0	12.20	273.90	3,934.4	-41.0	-620.3	-41.0	2.04	2.00	
4,088.0	11.20	271.90	4,026.5	-40.0	-639.3	-40.0	1.15	-1.06	
4,182.0	10.70	270.10	4,118.7	-39.7	-657.2	-39.7	0.64	-0.53	
4,277.0	9.20	270.70	4,212.3	-39.6	-673.6	-39.6	1.58	-1.58	
4,372.0	10.50	266.70	4,305.9	-40.0	-689.8	-40.0	1.55	1.37	
4,466.0	10.60	264.50	4,398.3	-41.3	-707.0	-41.3	0.44	0.11	
4,561.0	10.20	266.20	4,491.8	-42.7	-724.1	-42.7	0.53	-0.42	
4,656.0	10.10	265.30	4,585.3	-44.0	-740.8	-44.0	0.20	-0.11	
4,750.0	10.10	266.70	4,677.8	-45.1	-757.2	-45.1	0.26	0.00	
4,845.0	10.80	260.90	4,771.2	-47.0	-774.3	-47.0	1.33	0.74	
4,939.0	10.50	257.40	4,863.6	-50.3	-791.4	-50.3	0.76	-0.32	
5,034.0	9.90	255.70	4,957.1	-54.2	-807.7	-54.2	0.71	-0.63	
5,128.0	9.00	253.60	5,049.9	-58.3	-822.6	-58.3	1.03	-0.96	
5,223.0	9.90	263.20	5,143.6	-61.3	-837.9	-61.3	1.91	0.95	
5,318.0	9.20	259.90	5,237.3	-63.6	-853.4	-63.6	0.94	-0.74	
5,412.0	10.00	267.00	5,329.9	-65.4	-869.0	-65.4	1.52	0.85	
5,507.0	9.00	263.60	5,423.6	-66.6	-884.6	-66.6	1.21	-1.05	
5,601.0	10.00	270.50	5,516.3	-67.4	-900.1	-67.4	1.61	1.06	
5,696.0	10.80	267.90	5,609.8	-67.6	-917.2	-67.6	0.98	0.84	
5,790.0	9.60	264.40	5,702.3	-68.7	-933.8	-68.7	1.44	-1.28	
5,884.0	10.20	264.60	5,794.9	-70.3	-949.9	-70.3	0.64	0.64	
5,979.0	10.70	262.80	5,888.3	-72.2	-967.0	-72.2	0.63	0.53	
6,073.0	9.20	263.30	5,980.9	-74.1	-983.2	-74.1	1.60	-1.60	
6,168.0	9.70	256.80	6,074.6	-76.8	-998.5	-76.8	1.24	0.53	

Survey Report

Company:	EnCana Oil & Gas (USA) Inc	Local Co-ordinate Reference:	Well Grant Salisbury 2B-14H-C268
Project:	DJ Wattenberg	TVD Reference:	28.5' KB @ 4914.5ft (Patt 272)
Site:	S14-T2N-R68W (Grant Elmquist/Salisbury/Hurt)	MD Reference:	28.5' KB @ 4914.5ft (Patt 272)
Well:	Grant Salisbury 2B-14H-C268	North Reference:	True
Wellbore:	Hz	Survey Calculation Method:	Minimum Curvature
Design:	FINAL	Database:	USA EDM 5000 Multi Users DB

Survey									
Measured Depth (ft)	Inclination (°)	Azimuth (°)	Vertical Depth (ft)	+N/-S (ft)	+E/-W (ft)	Vertical Section (ft)	Dogleg Rate (°/100ft)	Build Rate (°/100ft)	Formations / Comments
6,262.0	10.70	260.40	6,167.1	-80.1	-1,014.8	-80.1	1.26	1.06	
6,356.0	10.50	257.20	6,259.5	-83.5	-1,031.8	-83.5	0.66	-0.21	
6,451.0	8.80	254.40	6,353.2	-87.3	-1,047.2	-87.3	1.86	-1.79	
6,545.0	9.50	264.70	6,446.0	-90.0	-1,061.9	-90.0	1.89	0.74	
6,640.0	8.10	274.10	6,539.9	-90.2	-1,076.3	-90.2	2.11	-1.47	
6,687.0	10.10	297.50	6,586.3	-88.1	-1,083.3	-88.1	8.86	4.26	
6,734.0	11.60	309.20	6,632.5	-83.2	-1,090.6	-83.2	5.65	3.19	
6,781.0	14.00	318.90	6,678.3	-75.9	-1,098.0	-75.9	6.84	5.11	
6,828.0	18.20	326.80	6,723.5	-65.5	-1,105.8	-65.5	10.06	8.94	
6,875.0	21.90	331.80	6,767.6	-51.6	-1,113.9	-51.6	8.67	7.87	
6,923.0	24.10	332.60	6,811.8	-35.0	-1,122.7	-35.0	4.63	4.58	
6,970.0	27.30	335.80	6,854.1	-16.7	-1,131.5	-16.7	7.42	6.81	
7,017.0	30.20	339.00	6,895.3	4.2	-1,140.2	4.2	6.98	6.17	
7,064.0	33.00	344.30	6,935.4	27.6	-1,147.9	27.6	8.39	5.96	
7,112.0	37.70	348.50	6,974.5	54.6	-1,154.4	54.6	11.02	9.79	
7,159.0	42.30	351.70	7,010.5	84.3	-1,159.5	84.3	10.72	9.79	
7,206.0	47.30	351.10	7,043.9	117.0	-1,164.5	117.0	10.68	10.64	
7,253.0	52.00	349.20	7,074.3	152.3	-1,170.6	152.3	10.46	10.00	
7,300.0	56.60	348.10	7,101.7	189.7	-1,178.1	189.7	9.97	9.79	
7,347.0	59.40	350.60	7,126.6	228.9	-1,185.5	228.9	7.47	5.96	
7,395.0	61.00	352.20	7,150.5	270.1	-1,191.7	270.1	4.41	3.33	
7,442.0	62.50	354.60	7,172.7	311.2	-1,196.5	311.2	5.52	3.19	
7,489.0	64.90	356.60	7,193.5	353.2	-1,199.7	353.2	6.37	5.11	
7,536.0	68.40	359.50	7,212.2	396.3	-1,201.1	396.3	9.36	7.45	
7,584.0	75.10	1.60	7,227.2	441.9	-1,200.7	441.9	14.56	13.96	
7,631.0	81.70	3.60	7,236.6	487.8	-1,198.6	487.8	14.65	14.04	
7,678.0	85.00	4.60	7,242.1	534.4	-1,195.2	534.4	7.33	7.02	
7,735.0	90.20	3.90	7,244.5	591.2	-1,191.0	591.2	9.20	9.12	
7,815.0	92.00	3.90	7,242.9	670.9	-1,185.6	670.9	2.25	2.25	
7,877.0	90.90	1.90	7,241.4	732.8	-1,182.5	732.8	3.68	-1.77	
7,971.0	90.20	0.20	7,240.4	826.8	-1,180.7	826.8	1.96	-0.74	
8,065.0	88.70	358.10	7,241.4	920.8	-1,182.1	920.8	2.75	-1.60	
8,158.0	88.70	358.10	7,243.5	1,013.7	-1,185.2	1,013.7	0.00	0.00	
8,252.0	88.40	358.40	7,245.8	1,107.6	-1,188.1	1,107.6	0.45	-0.32	
8,345.0	89.50	359.30	7,247.5	1,200.6	-1,189.9	1,200.6	1.53	1.18	
8,439.0	89.50	359.10	7,248.4	1,294.6	-1,191.3	1,294.6	0.21	0.00	
8,532.0	89.50	358.80	7,249.2	1,387.6	-1,193.0	1,387.6	0.32	0.00	
8,626.0	90.20	359.80	7,249.4	1,481.6	-1,194.1	1,481.6	1.30	0.74	
8,719.0	90.20	359.50	7,249.1	1,574.6	-1,194.7	1,574.6	0.32	0.00	
8,813.0	88.70	358.40	7,250.0	1,668.5	-1,196.4	1,668.5	1.98	-1.60	
8,906.0	90.40	358.80	7,250.7	1,761.5	-1,198.7	1,761.5	1.88	1.83	
9,000.0	91.10	358.50	7,249.5	1,855.5	-1,200.9	1,855.5	0.81	0.74	
9,094.0	88.50	356.50	7,249.8	1,949.4	-1,205.0	1,949.4	3.49	-2.77	
9,187.0	90.00	358.00	7,251.0	2,042.2	-1,209.4	2,042.2	2.28	1.61	
9,282.0	91.40	357.90	7,249.9	2,137.2	-1,212.8	2,137.2	1.48	1.47	
9,376.0	92.10	357.90	7,247.0	2,231.1	-1,216.3	2,231.1	0.74	0.74	
9,471.0	92.30	358.80	7,243.4	2,326.0	-1,219.0	2,326.0	0.97	0.21	
9,564.0	91.70	359.40	7,240.1	2,418.9	-1,220.5	2,418.9	0.91	-0.65	
9,659.0	92.60	0.70	7,236.6	2,513.8	-1,220.4	2,513.8	1.66	0.95	
9,754.0	93.00	359.40	7,231.9	2,608.7	-1,220.3	2,608.7	1.43	0.42	
9,849.0	92.00	359.40	7,227.8	2,703.6	-1,221.3	2,703.6	1.05	-1.05	
9,943.0	91.10	358.10	7,225.2	2,797.5	-1,223.4	2,797.5	1.68	-0.96	
10,038.0	90.40	358.80	7,224.0	2,892.5	-1,225.9	2,892.5	1.04	-0.74	

Survey Report

Company:	EnCana Oil & Gas (USA) Inc	Local Co-ordinate Reference:	Well Grant Salisbury 2B-14H-C268
Project:	DJ Wattenberg	TD Reference:	28.5' KB @ 4914.5ft (Patt 272)
Site:	S14-T2N-R68W (Grant Elmquist/Salisbury/Hurt)	MD Reference:	28.5' KB @ 4914.5ft (Patt 272)
Well:	Grant Salisbury 2B-14H-C268	North Reference:	True
Wellbore:	Hz	Survey Calculation Method:	Minimum Curvature
Design:	FINAL	Database:	USA EDM 5000 Multi Users DB

Survey									
Measured Depth (ft)	Inclination (°)	Azimuth (°)	Vertical Depth (ft)	+N/-S (ft)	+E/-W (ft)	Vertical Section (ft)	Dogleg Rate (°/100ft)	Build Rate (°/100ft)	Formations / Comments
10,132.0	90.90	358.80	7,222.9	2,986.5	-1,227.9	2,986.5	0.53	0.53	
10,227.0	93.20	1.30	7,219.5	3,081.4	-1,227.8	3,081.4	3.57	2.42	
10,321.0	91.60	359.60	7,215.6	3,175.3	-1,227.1	3,175.3	2.48	-1.70	
10,415.0	91.30	358.60	7,213.2	3,269.3	-1,228.6	3,269.3	1.11	-0.32	
10,510.0	91.40	358.80	7,211.0	3,364.2	-1,230.7	3,364.2	0.24	0.11	
10,604.0	90.90	359.30	7,209.1	3,458.2	-1,232.3	3,458.2	0.75	-0.53	
10,699.0	90.00	358.80	7,208.3	3,553.2	-1,233.8	3,553.2	1.08	-0.95	
10,795.0	88.60	359.90	7,209.5	3,649.1	-1,234.9	3,649.1	1.85	-1.46	
10,889.0	89.10	0.20	7,211.4	3,743.1	-1,234.8	3,743.1	0.62	0.53	
10,983.0	89.60	0.40	7,212.5	3,837.1	-1,234.4	3,837.1	0.57	0.53	
11,078.0	91.10	0.70	7,211.9	3,932.1	-1,233.4	3,932.1	1.61	1.58	
11,172.0	90.10	359.30	7,210.9	4,026.1	-1,233.4	4,026.1	1.83	-1.06	
11,267.0	93.20	1.90	7,208.2	4,121.0	-1,232.4	4,121.0	4.26	3.26	
11,361.0	93.00	0.80	7,203.1	4,214.9	-1,230.2	4,214.9	1.19	-0.21	
11,456.0	91.40	1.70	7,199.4	4,309.8	-1,228.2	4,309.8	1.93	-1.68	
11,550.0	89.90	0.20	7,198.4	4,403.8	-1,226.6	4,403.8	2.26	-1.60	
11,645.0	90.90	0.10	7,197.7	4,498.7	-1,226.4	4,498.7	1.06	1.05	
11,739.0	90.00	359.30	7,197.0	4,592.8	-1,226.9	4,592.8	1.28	-0.96	
11,833.0	90.20	358.90	7,196.8	4,686.8	-1,228.3	4,686.8	0.48	0.21	
11,929.0	91.60	359.90	7,195.3	4,782.7	-1,229.3	4,782.7	1.79	1.46	
12,023.0	88.90	0.90	7,194.9	4,876.7	-1,228.7	4,876.7	3.06	-2.87	
12,117.0	89.50	0.80	7,196.2	4,970.7	-1,227.3	4,970.7	0.65	0.64	
12,211.0	90.50	1.80	7,196.2	5,064.7	-1,225.2	5,064.7	1.50	1.06	
12,305.0	89.80	0.60	7,195.9	5,158.7	-1,223.2	5,158.7	1.48	-0.74	
12,399.0	91.80	1.70	7,194.6	5,252.6	-1,221.3	5,252.6	2.43	2.13	
12,493.0	92.00	1.20	7,191.5	5,346.5	-1,218.9	5,346.5	0.57	0.21	
12,588.0	90.90	0.80	7,189.1	5,441.5	-1,217.3	5,441.5	1.23	-1.16	
12,682.0	88.90	0.40	7,189.3	5,535.5	-1,216.3	5,535.5	2.17	-2.13	
12,777.0	87.90	359.70	7,191.9	5,630.4	-1,216.2	5,630.4	1.28	-1.05	
12,871.0	90.00	359.60	7,193.7	5,724.4	-1,216.8	5,724.4	2.24	2.23	
12,965.0	90.20	358.80	7,193.5	5,818.4	-1,218.1	5,818.4	0.88	0.21	
13,059.0	91.00	358.40	7,192.5	5,912.4	-1,220.4	5,912.4	0.95	0.85	
13,154.0	90.50	359.10	7,191.3	6,007.3	-1,222.5	6,007.3	0.91	-0.53	
13,252.0	90.00	358.90	7,190.8	6,105.3	-1,224.2	6,105.3	0.55	-0.51	Last CES Survey @ 13,252' MD
13,307.0	90.00	358.90	7,190.8	6,160.3	-1,225.2	6,160.3	0.00	0.00	PTB @ 13,307'

Survey Report

Company: EnCana Oil & Gas (USA) Inc	Local Co-ordinate Reference: Well Grant Salisbury 2B-14H-C268
Project: DJ Wattenberg	TVD Reference: 28.5' KB @ 4914.5ft (Patt 272)
Site: S14-T2N-R68W (Grant Elmquist/Salisbury/Hurt)	MD Reference: 28.5' KB @ 4914.5ft (Patt 272)
Well: Grant Salisbury 2B-14H-C268	North Reference: True
Wellbore: Hz	Survey Calculation Method: Minimum Curvature
Design: FINAL	Database: USA EDM 5000 Multi Users DB

Targets									
Target Name	Dip Angle	Dip Dir.	TVD	+N/-S	+E/-W	Northing	Easting	Latitude	Longitude
- hit/miss target	(°)	(°)	(ft)	(ft)	(ft)	(ft)	(ft)		
- Shape									
2B-14H LP - actual wellpath misses target center by 24.3ft at 7624.1ft MD (7235.6 TVD, 481.0 N, -1199.0 E) - Point	0.00	0.00	7,245.0	480.1	-1,221.4	1,295,609.83	3,145,881.95	40.143658	-104.978199
Grant Salisbury 2B-14H- - actual wellpath misses target center by 72.7ft at 13307.0ft MD (7190.8 TVD, 6160.3 N, -1225.2 E) - Point	0.00	0.00	7,251.5	6,200.1	-1,221.4	1,301,329.74	3,145,848.00	40.159360	-104.978200
2B-14H Tgt 1 - actual wellpath misses target center by 14.2ft at 9457.5ft MD (7243.9 TVD, 2312.5 N, -1218.7 E) - Point	0.00	0.00	7,230.0	2,311.9	-1,221.4	1,297,441.60	3,145,871.08	40.148686	-104.978199
2B-14H PBHL P2 - actual wellpath misses target center by 40.0ft at 13307.0ft MD (7190.8 TVD, 6160.3 N, -1225.2 E) - Point	0.00	0.00	7,190.0	6,200.1	-1,221.4	1,301,329.73	3,145,848.01	40.159360	-104.978200
2B-14H Tgt 2 - actual wellpath misses target center by 16.0ft at 10757.5ft MD (7208.8 TVD, 3611.6 N, -1234.7 E) - Point	0.00	0.00	7,200.0	3,611.9	-1,221.4	1,298,741.58	3,145,863.37	40.152255	-104.978199

Design Annotations					
Measured Depth	Vertical Depth	Local Coordinates			
(ft)	(ft)	+N/-S	+E/-W	Comment	
		(ft)	(ft)		
13,252.0	7,190.8	6,105.3	-1,224.2	Last CES Survey @ 13,252' MD	
13,307.0	7,190.8	6,160.3	-1,225.2	PTB @ 13,307'	

Checked By: _____ Approved By: _____ Date: _____

EnCana Oil & Gas (USA) Inc

DJ Wattenberg

S14-T2N-R68W (Grant Elmquist/Salisbury/Hurt)

Grant Salisbury 2B-14H-C268

Hz

Design: FINAL

Survey Report - Geographic

03 November, 2014

Survey Report - Geographic

Company: EnCana Oil & Gas (USA) Inc	Local Co-ordinate Reference: Well Grant Salisbury 2B-14H-C268
Project: DJ Wattenberg	TVD Reference: 28.5' KB @ 4914.5ft (Patt 272)
Site: S14-T2N-R68W (Grant Elmquist/Salisbury/Hurt)	MD Reference: 28.5' KB @ 4914.5ft (Patt 272)
Well: Grant Salisbury 2B-14H-C268	North Reference: True
Wellbore: Hz	Survey Calculation Method: Minimum Curvature
Design: FINAL	Database: USA EDM 5000 Multi Users DB

Project DJ Wattenberg		
Map System: US State Plane 1983	System Datum:	Mean Sea Level
Geo Datum: North American Datum 1983		
Map Zone: Colorado Northern Zone		

Site S14-T2N-R68W (Grant Elmquist/Salisbury/Hurt)				
Site Position:	Northing:	1,295,686.81 ft	Latitude:	40.143850
From: Lat/Long	Easting:	3,147,060.98 ft	Longitude:	-104.973980
Position Uncertainty: 0.0 ft	Slot Radius: 13.200 in		Grid Convergence:	0.34 °

Well Grant Salisbury 2B-14H-C268				
Well Position	+N/-S	0.0 ft	Northing:	1,295,136.98 ft
	+E/-W	0.0 ft	Easting:	3,147,106.18 ft
Position Uncertainty		0.0 ft	Wellhead Elevation:	ft
			Latitude:	40.142340
			Longitude:	-104.973830
			Ground Level:	4,886.0 ft

Wellbore Hz					
Magnetics	Model Name	Sample Date	Declination	Dip Angle	Field Strength
	IGRF2010	10/20/2014	(°)	(°)	(nT)
			8.50	66.69	52,621

Design FINAL				
Audit Notes:				
Version:	1.0	Phase:	ACTUAL	Tie On Depth: 0.0
Vertical Section:	Depth From (TVD)	+N/-S	+E/-W	Direction
	(ft)	(ft)	(ft)	(°)
	0.0	0.0	0.0	0.00

Survey Program		Date 11/3/2014
From	To	Survey (Wellbore)
(ft)	(ft)	
136.0	13,307.0	Survey #1 (Hz)
		Tool Name
		Geolink MWD
		Description
		Geolink MWD

Survey										
Measured Depth (ft)	Inclination (°)	Azimuth (°)	Vertical Depth (ft)	+N/-S (ft)	+E/-W (ft)	Map Northing (ft)	Map Easting (ft)	Latitude	Longitude	
0.0	0.00	0.00	0.0	0.0	0.0	1,295,136.98	3,147,106.18	40.142340	-104.973830	
136.0	0.10	32.10	136.0	0.1	0.1	1,295,137.08	3,147,106.24	40.142340	-104.973830	
229.0	0.70	258.80	229.0	0.1	-0.5	1,295,137.04	3,147,105.73	40.142340	-104.973832	
323.0	0.90	230.40	323.0	-0.5	-1.6	1,295,136.45	3,147,104.60	40.142339	-104.973836	
416.0	1.40	278.30	416.0	-0.8	-3.3	1,295,136.14	3,147,102.91	40.142338	-104.973842	
510.0	2.60	264.90	509.9	-0.8	-6.5	1,295,136.10	3,147,099.65	40.142338	-104.973854	
603.0	4.70	278.20	602.7	-0.5	-12.4	1,295,136.42	3,147,093.78	40.142339	-104.973875	
697.0	7.00	285.80	696.2	1.6	-21.7	1,295,138.47	3,147,084.44	40.142344	-104.973908	
790.0	9.10	286.20	788.3	5.2	-34.2	1,295,141.99	3,147,071.90	40.142354	-104.973953	
874.0	12.20	282.10	870.9	8.9	-49.3	1,295,145.62	3,147,056.82	40.142365	-104.974007	
981.0	14.80	280.10	974.9	13.7	-73.8	1,295,150.24	3,147,032.28	40.142378	-104.974094	
1,075.0	16.60	273.80	1,065.4	16.7	-99.0	1,295,153.08	3,147,007.04	40.142386	-104.974185	

Survey Report - Geographic

Company:	EnCana Oil & Gas (USA) Inc	Local Co-ordinate Reference:	Well Grant Salisbury 2B-14H-C268
Project:	DJ Wattenberg	TVD Reference:	28.5' KB @ 4914.5ft (Patt 272)
Site:	S14-T2N-R68W (Grant Elmquist/Salisbury/Hurt)	MD Reference:	28.5' KB @ 4914.5ft (Patt 272)
Well:	Grant Salisbury 2B-14H-C268	North Reference:	True
Wellbore:	Hz	Survey Calculation Method:	Minimum Curvature
Design:	FINAL	Database:	USA EDM 5000 Multi Users DB

Survey										
Measured Depth (ft)	Inclination (°)	Azimuth (°)	Vertical Depth (ft)	+N/-S (ft)	+E/-W (ft)	Map Northing (ft)	Map Easting (ft)	Latitude	Longitude	
1,168.0	16.50	261.50	1,154.6	15.6	-125.4	1,295,151.86	3,146,980.72	40.142383	-104.974279	
1,262.0	14.60	251.70	1,245.1	9.9	-149.8	1,295,146.02	3,146,956.30	40.142367	-104.974366	
1,355.0	13.30	250.60	1,335.4	2.7	-171.0	1,295,138.66	3,146,935.12	40.142347	-104.974442	
1,449.0	10.60	245.60	1,427.3	-4.5	-189.1	1,295,131.39	3,146,917.09	40.142328	-104.974507	
1,543.0	8.40	260.40	1,520.1	-9.2	-203.8	1,295,126.58	3,146,902.47	40.142315	-104.974559	
1,636.0	9.50	259.20	1,611.9	-11.8	-218.0	1,295,123.93	3,146,888.25	40.142308	-104.974610	
1,730.0	9.10	255.50	1,704.7	-15.1	-232.8	1,295,120.52	3,146,873.45	40.142299	-104.974663	
1,823.0	8.80	269.10	1,796.6	-17.0	-247.1	1,295,118.48	3,146,859.23	40.142293	-104.974714	
1,917.0	10.80	262.80	1,889.2	-18.2	-263.0	1,295,117.17	3,146,843.31	40.142290	-104.974771	
2,010.0	11.00	260.40	1,980.5	-20.8	-280.4	1,295,114.50	3,146,825.93	40.142283	-104.974833	
2,104.0	9.80	265.20	2,073.0	-23.0	-297.2	1,295,112.23	3,146,809.13	40.142277	-104.974893	
2,197.0	10.20	261.50	2,164.6	-24.9	-313.2	1,295,110.26	3,146,793.11	40.142272	-104.974951	
2,292.0	8.40	258.80	2,258.3	-27.5	-328.3	1,295,107.58	3,146,778.00	40.142265	-104.975005	
2,386.0	8.40	254.00	2,351.3	-30.7	-341.7	1,295,104.27	3,146,764.68	40.142256	-104.975052	
2,480.0	8.20	250.80	2,444.3	-34.8	-354.6	1,295,100.10	3,146,751.77	40.142245	-104.975099	
2,575.0	8.00	258.10	2,538.4	-38.4	-367.5	1,295,096.43	3,146,738.93	40.142235	-104.975145	
2,670.0	9.50	263.20	2,632.3	-40.7	-381.7	1,295,094.06	3,146,724.69	40.142228	-104.975196	
2,764.0	9.80	263.20	2,724.9	-42.5	-397.4	1,295,092.10	3,146,709.05	40.142223	-104.975252	
2,859.0	10.10	268.20	2,818.5	-43.7	-413.7	1,295,090.78	3,146,692.71	40.142220	-104.975310	
2,953.0	11.40	269.80	2,910.9	-44.0	-431.3	1,295,090.39	3,146,675.18	40.142219	-104.975373	
3,048.0	10.90	267.30	3,004.1	-44.5	-449.6	1,295,089.82	3,146,656.82	40.142218	-104.975439	
3,143.0	10.40	266.00	3,097.4	-45.5	-467.2	1,295,088.70	3,146,639.30	40.142215	-104.975501	
3,237.0	10.20	260.50	3,189.9	-47.5	-483.8	1,295,086.63	3,146,622.64	40.142210	-104.975561	
3,332.0	9.80	268.90	3,283.5	-49.0	-500.2	1,295,084.99	3,146,606.27	40.142205	-104.975619	
3,426.0	10.60	273.50	3,376.0	-48.7	-516.8	1,295,085.27	3,146,589.64	40.142206	-104.975679	
3,521.0	9.80	268.80	3,469.5	-48.3	-533.6	1,295,085.53	3,146,572.83	40.142207	-104.975739	
3,615.0	10.90	274.60	3,562.0	-47.7	-550.5	1,295,085.98	3,146,555.97	40.142209	-104.975799	
3,710.0	9.80	274.90	3,655.4	-46.3	-567.5	1,295,087.29	3,146,538.95	40.142213	-104.975860	
3,804.0	11.00	277.00	3,747.9	-44.6	-584.4	1,295,088.96	3,146,522.07	40.142218	-104.975921	
3,899.0	10.30	275.90	3,841.2	-42.6	-601.8	1,295,090.84	3,146,504.62	40.142223	-104.975983	
3,994.0	12.20	273.90	3,934.4	-41.0	-620.3	1,295,092.28	3,146,486.14	40.142227	-104.976049	
4,088.0	11.20	271.90	4,026.5	-40.0	-639.3	1,295,093.15	3,146,467.10	40.142230	-104.976117	
4,182.0	10.70	270.10	4,118.7	-39.7	-657.2	1,295,093.36	3,146,449.25	40.142231	-104.976181	
4,277.0	9.20	270.70	4,212.3	-39.6	-673.6	1,295,093.37	3,146,432.84	40.142231	-104.976240	
4,372.0	10.50	266.70	4,305.9	-40.0	-689.8	1,295,092.87	3,146,416.60	40.142230	-104.976298	
4,466.0	10.60	264.50	4,398.3	-41.3	-707.0	1,295,091.44	3,146,399.45	40.142227	-104.976359	
4,561.0	10.20	266.20	4,491.8	-42.7	-724.1	1,295,089.95	3,146,382.37	40.142223	-104.976420	
4,656.0	10.10	265.30	4,585.3	-44.0	-740.8	1,295,088.61	3,146,365.69	40.142219	-104.976480	
4,750.0	10.10	266.70	4,677.8	-45.1	-757.2	1,295,087.36	3,146,349.25	40.142216	-104.976539	
4,845.0	10.80	260.90	4,771.2	-47.0	-774.3	1,295,085.37	3,146,332.16	40.142211	-104.976600	
4,939.0	10.50	257.40	4,863.6	-50.3	-791.4	1,295,082.01	3,146,315.12	40.142202	-104.976661	
5,034.0	9.90	255.70	4,957.1	-54.2	-807.7	1,295,078.01	3,146,298.78	40.142191	-104.976719	
5,128.0	9.00	253.60	5,049.9	-58.3	-822.6	1,295,073.85	3,146,283.92	40.142180	-104.976773	
5,223.0	9.90	263.20	5,143.6	-61.3	-837.9	1,295,070.69	3,146,268.70	40.142172	-104.976827	
5,318.0	9.20	259.90	5,237.3	-63.6	-853.4	1,295,068.30	3,146,253.13	40.142165	-104.976883	
5,412.0	10.00	267.00	5,329.9	-65.4	-869.0	1,295,066.46	3,146,237.59	40.142161	-104.976939	
5,507.0	9.00	263.60	5,423.6	-66.6	-884.6	1,295,065.11	3,146,221.98	40.142157	-104.976994	
5,601.0	10.00	270.50	5,516.3	-67.4	-900.1	1,295,064.27	3,146,206.51	40.142155	-104.977050	
5,696.0	10.80	267.90	5,609.8	-67.6	-917.2	1,295,063.92	3,146,189.37	40.142154	-104.977111	
5,790.0	9.60	264.40	5,702.3	-68.7	-933.8	1,295,062.73	3,146,172.78	40.142151	-104.977170	
5,884.0	10.20	264.60	5,794.9	-70.3	-949.9	1,295,061.09	3,146,156.70	40.142147	-104.977228	
5,979.0	10.70	262.80	5,888.3	-72.2	-967.0	1,295,059.09	3,146,139.59	40.142142	-104.977289	
6,073.0	9.20	263.30	5,980.9	-74.1	-983.2	1,295,057.02	3,146,123.48	40.142136	-104.977347	
6,168.0	9.70	256.80	6,074.6	-76.8	-998.5	1,295,054.22	3,146,108.16	40.142129	-104.977402	
6,262.0	10.70	260.40	6,167.1	-80.1	-1,014.8	1,295,050.86	3,146,091.86	40.142120	-104.977460	

Survey Report - Geographic

Company:	EnCana Oil & Gas (USA) Inc	Local Co-ordinate Reference:	Well Grant Salisbury 2B-14H-C268
Project:	DJ Wattenberg	TVD Reference:	28.5' KB @ 4914.5ft (Patt 272)
Site:	S14-T2N-R68W (Grant Elmquist/Salisbury/Hurt)	MD Reference:	28.5' KB @ 4914.5ft (Patt 272)
Well:	Grant Salisbury 2B-14H-C268	North Reference:	True
Wellbore:	Hz	Survey Calculation Method:	Minimum Curvature
Design:	FINAL	Database:	USA EDM 5000 Multi Users DB

Survey										
Measured Depth (ft)	Inclination (°)	Azimuth (°)	Vertical Depth (ft)	+N/-S (ft)	+E/-W (ft)	Map Northing (ft)	Map Easting (ft)	Latitude	Longitude	
6,356.0	10.50	257.20	6,259.5	-83.5	-1,031.8	1,295,047.40	3,146,074.93	40.142111	-104.977521	
6,451.0	8.80	254.40	6,353.2	-87.3	-1,047.2	1,295,043.44	3,146,059.51	40.142100	-104.977576	
6,545.0	9.50	264.70	6,446.0	-90.0	-1,061.9	1,295,040.70	3,146,044.87	40.142093	-104.977628	
6,640.0	8.10	274.10	6,539.9	-90.2	-1,076.3	1,295,040.37	3,146,030.39	40.142092	-104.977680	
6,687.0	10.10	297.50	6,586.3	-88.1	-1,083.3	1,295,042.47	3,146,023.42	40.142098	-104.977705	
6,734.0	11.60	309.20	6,632.5	-83.2	-1,090.6	1,295,047.32	3,146,016.07	40.142112	-104.977731	
6,781.0	14.00	318.90	6,678.3	-75.9	-1,098.0	1,295,054.54	3,146,008.63	40.142132	-104.977758	
6,828.0	18.20	326.80	6,723.5	-65.5	-1,105.8	1,295,064.93	3,146,000.80	40.142160	-104.977786	
6,875.0	21.90	331.80	6,767.6	-51.6	-1,113.9	1,295,078.75	3,145,992.56	40.142198	-104.977815	
6,923.0	24.10	332.60	6,811.8	-35.0	-1,122.7	1,295,095.29	3,145,983.72	40.142244	-104.977846	
6,970.0	27.30	335.80	6,854.1	-16.7	-1,131.5	1,295,113.60	3,145,974.77	40.142294	-104.977878	
7,017.0	30.20	339.00	6,895.3	4.2	-1,140.2	1,295,134.42	3,145,965.99	40.142352	-104.977909	
7,064.0	33.00	344.30	6,935.4	27.6	-1,147.9	1,295,157.74	3,145,958.15	40.142416	-104.977936	
7,112.0	37.70	348.50	6,974.5	54.6	-1,154.4	1,295,184.68	3,145,951.52	40.142490	-104.977959	
7,159.0	42.30	351.70	7,010.5	84.3	-1,159.5	1,295,214.40	3,145,946.19	40.142571	-104.977978	
7,206.0	47.30	351.10	7,043.9	117.0	-1,164.5	1,295,247.11	3,145,941.04	40.142661	-104.977995	
7,253.0	52.00	349.20	7,074.3	152.3	-1,170.6	1,295,282.35	3,145,934.69	40.142758	-104.978017	
7,300.0	56.60	348.10	7,101.7	189.7	-1,178.1	1,295,319.71	3,145,926.95	40.142861	-104.978044	
7,347.0	59.40	350.60	7,126.6	228.9	-1,185.5	1,295,358.83	3,145,919.36	40.142968	-104.978071	
7,395.0	61.00	352.20	7,150.5	270.1	-1,191.7	1,295,399.97	3,145,912.89	40.143081	-104.978093	
7,442.0	62.50	354.60	7,172.7	311.2	-1,196.5	1,295,441.07	3,145,907.90	40.143194	-104.978110	
7,489.0	64.90	356.60	7,193.5	353.2	-1,199.7	1,295,483.05	3,145,904.42	40.143310	-104.978121	
7,536.0	68.40	359.50	7,212.2	396.3	-1,201.1	1,295,526.16	3,145,902.72	40.143428	-104.978127	
7,584.0	75.10	1.60	7,227.2	441.9	-1,200.7	1,295,571.71	3,145,902.90	40.143553	-104.978125	
7,631.0	81.70	3.60	7,236.6	487.8	-1,198.6	1,295,617.69	3,145,904.72	40.143679	-104.978118	
7,678.0	85.00	4.60	7,242.1	534.4	-1,195.2	1,295,664.27	3,145,907.78	40.143807	-104.978106	
7,735.0	90.20	3.90	7,244.5	591.2	-1,191.0	1,295,721.06	3,145,911.67	40.143963	-104.978091	
7,815.0	92.00	3.90	7,242.9	670.9	-1,185.6	1,295,800.88	3,145,916.63	40.144182	-104.978071	
7,877.0	90.90	1.90	7,241.4	732.8	-1,182.5	1,295,862.79	3,145,919.40	40.144352	-104.978060	
7,971.0	90.20	0.20	7,240.4	826.8	-1,180.7	1,295,956.77	3,145,920.56	40.144610	-104.978054	
8,065.0	88.70	358.10	7,241.4	920.8	-1,182.1	1,296,050.74	3,145,918.61	40.144868	-104.978059	
8,158.0	88.70	358.10	7,243.5	1,013.7	-1,185.2	1,296,143.65	3,145,914.98	40.145123	-104.978070	
8,252.0	88.40	358.40	7,245.8	1,107.6	-1,188.1	1,296,237.55	3,145,911.55	40.145381	-104.978080	
8,345.0	89.50	359.30	7,247.5	1,200.6	-1,189.9	1,296,330.51	3,145,909.13	40.145636	-104.978087	
8,439.0	89.50	359.10	7,248.4	1,294.6	-1,191.3	1,296,424.48	3,145,907.26	40.145894	-104.978092	
8,532.0	89.50	358.80	7,249.2	1,387.6	-1,193.0	1,296,517.45	3,145,905.01	40.146149	-104.978098	
8,626.0	90.20	359.80	7,249.4	1,481.6	-1,194.1	1,296,611.43	3,145,903.30	40.146407	-104.978102	
8,719.0	90.20	359.50	7,249.1	1,574.6	-1,194.7	1,296,704.43	3,145,902.18	40.146662	-104.978104	
8,813.0	88.70	358.40	7,250.0	1,668.5	-1,196.4	1,296,798.39	3,145,899.90	40.146920	-104.978110	
8,906.0	90.40	358.80	7,250.7	1,761.5	-1,198.7	1,296,891.34	3,145,897.08	40.147176	-104.978118	
9,000.0	91.10	358.50	7,249.5	1,855.5	-1,200.9	1,296,985.29	3,145,894.31	40.147433	-104.978126	
9,094.0	88.50	356.50	7,249.8	1,949.4	-1,205.0	1,297,079.16	3,145,889.65	40.147691	-104.978141	
9,187.0	90.00	358.00	7,251.0	2,042.2	-1,209.4	1,297,172.01	3,145,884.64	40.147946	-104.978157	
9,282.0	91.40	357.90	7,249.9	2,137.2	-1,212.8	1,297,266.92	3,145,880.68	40.148207	-104.978169	
9,376.0	92.10	357.90	7,247.0	2,231.1	-1,216.3	1,297,360.79	3,145,876.68	40.148465	-104.978181	
9,471.0	92.30	358.80	7,243.4	2,326.0	-1,219.0	1,297,455.66	3,145,873.38	40.148725	-104.978191	
9,564.0	91.70	359.40	7,240.1	2,418.9	-1,220.5	1,297,548.59	3,145,871.37	40.148980	-104.978196	
9,659.0	92.60	0.70	7,236.6	2,513.8	-1,220.4	1,297,643.51	3,145,870.89	40.149241	-104.978196	
9,754.0	93.00	359.40	7,231.9	2,608.7	-1,220.3	1,297,738.40	3,145,870.41	40.149501	-104.978196	
9,849.0	92.00	359.40	7,227.8	2,703.6	-1,221.3	1,297,833.29	3,145,868.85	40.149762	-104.978199	
9,943.0	91.10	358.10	7,225.2	2,797.5	-1,223.4	1,297,927.22	3,145,866.24	40.150020	-104.978207	
10,038.0	90.40	358.80	7,224.0	2,892.5	-1,225.9	1,298,022.16	3,145,863.11	40.150280	-104.978216	
10,132.0	90.90	358.80	7,222.9	2,986.5	-1,227.9	1,298,116.12	3,145,860.59	40.150538	-104.978223	
10,227.0	93.20	1.30	7,219.5	3,081.4	-1,227.8	1,298,211.04	3,145,860.10	40.150799	-104.978223	
10,321.0	91.60	359.60	7,215.6	3,175.3	-1,227.1	1,298,304.95	3,145,860.28	40.151057	-104.978220	

Survey Report - Geographic

Company:	EnCana Oil & Gas (USA) Inc	Local Co-ordinate Reference:	Well Grant Salisbury 2B-14H-C268
Project:	DJ Wattenberg	TVD Reference:	28.5' KB @ 4914.5ft (Patt 272)
Site:	S14-T2N-R68W (Grant Elmquist/Salisbury/Hurt)	MD Reference:	28.5' KB @ 4914.5ft (Patt 272)
Well:	Grant Salisbury 2B-14H-C268	North Reference:	True
Wellbore:	Hz	Survey Calculation Method:	Minimum Curvature
Design:	FINAL	Database:	USA EDM 5000 Multi Users DB

Survey										
Measured Depth (ft)	Inclination (°)	Azimuth (°)	Vertical Depth (ft)	+N/-S (ft)	+E/-W (ft)	Map Northing (ft)	Map Easting (ft)	Latitude	Longitude	
10,415.0	91.30	358.60	7,213.2	3,269.3	-1,228.6	1,298,398.90	3,145,858.25	40.151315	-104.978225	
10,510.0	91.40	358.80	7,211.0	3,364.2	-1,230.7	1,298,493.83	3,145,855.53	40.151575	-104.978233	
10,604.0	90.90	359.30	7,209.1	3,458.2	-1,232.3	1,298,587.79	3,145,853.42	40.151833	-104.978239	
10,699.0	90.00	358.80	7,208.3	3,553.2	-1,233.8	1,298,682.76	3,145,851.28	40.152094	-104.978244	
10,795.0	88.60	359.90	7,209.5	3,649.1	-1,234.9	1,298,778.74	3,145,849.62	40.152357	-104.978248	
10,889.0	89.10	0.20	7,211.4	3,743.1	-1,234.8	1,298,872.72	3,145,849.14	40.152615	-104.978248	
10,983.0	89.60	0.40	7,212.5	3,837.1	-1,234.4	1,298,966.71	3,145,849.08	40.152873	-104.978246	
11,078.0	91.10	0.70	7,211.9	3,932.1	-1,233.4	1,299,061.71	3,145,849.43	40.153134	-104.978243	
11,172.0	90.10	359.30	7,210.9	4,026.1	-1,233.4	1,299,155.69	3,145,848.87	40.153392	-104.978243	
11,267.0	93.20	1.90	7,208.2	4,121.0	-1,232.4	1,299,250.63	3,145,849.30	40.153653	-104.978239	
11,361.0	93.00	0.80	7,203.1	4,214.9	-1,230.2	1,299,344.48	3,145,850.95	40.153910	-104.978231	
11,456.0	91.40	1.70	7,199.4	4,309.8	-1,228.2	1,299,439.39	3,145,852.46	40.154171	-104.978224	
11,550.0	89.90	0.20	7,198.4	4,403.8	-1,226.6	1,299,533.38	3,145,853.46	40.154429	-104.978219	
11,645.0	90.90	0.10	7,197.7	4,498.7	-1,226.4	1,299,628.37	3,145,853.14	40.154690	-104.978218	
11,739.0	90.00	359.30	7,197.0	4,592.8	-1,226.9	1,299,722.39	3,145,852.09	40.154948	-104.978219	
11,833.0	90.20	358.90	7,196.8	4,686.8	-1,228.3	1,299,816.36	3,145,850.06	40.155206	-104.978225	
11,929.0	91.60	359.90	7,195.3	4,782.7	-1,229.3	1,299,912.34	3,145,848.49	40.155469	-104.978228	
12,023.0	88.90	0.90	7,194.9	4,876.7	-1,228.7	1,300,006.33	3,145,848.58	40.155727	-104.978226	
12,117.0	89.50	0.80	7,196.2	4,970.7	-1,227.3	1,300,100.31	3,145,849.42	40.155985	-104.978221	
12,211.0	90.50	1.80	7,196.2	5,064.7	-1,225.2	1,300,194.30	3,145,851.00	40.156243	-104.978213	
12,305.0	89.80	0.60	7,195.9	5,158.7	-1,223.2	1,300,288.28	3,145,852.41	40.156501	-104.978206	
12,399.0	91.80	1.70	7,194.6	5,252.6	-1,221.3	1,300,382.26	3,145,853.74	40.156759	-104.978200	
12,493.0	92.00	1.20	7,191.5	5,346.5	-1,218.9	1,300,476.19	3,145,855.56	40.157017	-104.978191	
12,588.0	90.90	0.80	7,189.1	5,441.5	-1,217.3	1,300,571.13	3,145,856.65	40.157277	-104.978185	
12,682.0	88.90	0.40	7,189.3	5,535.5	-1,216.3	1,300,665.12	3,145,857.08	40.157536	-104.978182	
12,777.0	87.90	359.70	7,191.9	5,630.4	-1,216.2	1,300,760.08	3,145,856.59	40.157796	-104.978181	
12,871.0	90.00	359.60	7,193.7	5,724.4	-1,216.8	1,300,854.08	3,145,855.46	40.158054	-104.978184	
12,965.0	90.20	358.80	7,193.5	5,818.4	-1,218.1	1,300,948.06	3,145,853.59	40.158312	-104.978188	
13,059.0	91.00	358.40	7,192.5	5,912.4	-1,220.4	1,301,042.01	3,145,850.74	40.158570	-104.978197	
13,154.0	90.50	359.10	7,191.3	6,007.3	-1,222.5	1,301,136.96	3,145,848.10	40.158831	-104.978204	
13,252.0	90.00	358.90	7,190.8	6,105.3	-1,224.2	1,301,234.91	3,145,845.81	40.159100	-104.978210	
Last CES Survey @ 13,252' MD										
13,307.0	90.00	358.90	7,190.8	6,160.3	-1,225.2	1,301,289.89	3,145,844.43	40.159251	-104.978214	
PTB @ 13,307'										

Design Targets										
Target Name	Dip Angle (°)	Dip Dir. (°)	TVD (ft)	+N/-S (ft)	+E/-W (ft)	Northing (ft)	Easting (ft)	Latitude	Longitude	
2B-14H PBHL P2	0.00	0.00	7,190.0	6,200.1	-1,221.4	1,301,329.73	3,145,848.01	40.159360	-104.978200	
- actual wellpath misses target center by 40.0ft at 13307.0ft MD (7190.8 TVD, 6160.3 N, -1225.2 E)										
- Point										

Design Annotations					
Measured Depth (ft)	Vertical Depth (ft)	+N/-S (ft)	+E/-W (ft)	Comment	
13,252.0	7,190.8	6,105.3	-1,224.2	Last CES Survey @ 13,252' MD	
13,307.0	7,190.8	6,160.3	-1,225.2	PTB @ 13,307'	

Survey Report - Geographic

Company:	EnCana Oil & Gas (USA) Inc	Local Co-ordinate Reference:	Well Grant Salisbury 2B-14H-C268
Project:	DJ Wattenberg	TVD Reference:	28.5' KB @ 4914.5ft (Patt 272)
Site:	S14-T2N-R68W (Grant Elmquist/Salisbury/Hurt)	MD Reference:	28.5' KB @ 4914.5ft (Patt 272)
Well:	Grant Salisbury 2B-14H-C268	North Reference:	True
Wellbore:	Hz	Survey Calculation Method:	Minimum Curvature
Design:	FINAL	Database:	USA EDM 5000 Multi Users DB

Checked By: _____	Approved By: _____	Date: _____
-------------------	--------------------	-------------