



RADIAL CEMENT BOND
GAMMA RAY
CCL

Company	KERR MCGEE OIL AND GAS	Company	KERR MCGEE OIL AND GAS
Well	VOGL 31-5	Well	VOGL 31-5
Field	WATTENBERG	Field	WATTENBERG
County	WELD	County	WELD
State	CO	State	CO
Location:		API # : 05-123-31199	Other Services
SHL: 315' FNL 349' FWL NW/NW			
Permanent Datum	GL	Elevation	4830'
Log Measured From	KB 14'		
Drilling Measured From	KB		
SEC 5 TWP 2N RGE 67W			
Date	12-10-2014		
Run Number	ONE		
Depth Driller	8052'		
Depth Logger	1431'		
Bottom Logged Interval	1422'		
Top Log Interval	SURFACE		
Open Hole Size	7.875		
Type Fluid	WATER		
Density / Viscosity	1.0		
Max. Recorded Temp.	75 DEG F		
Estimated Cement Top	615'		
Time Well Ready	N/A		
Time Logger on Bottom	N/A		
Equipment Number	4310		
Location	GREELEY		
Recorded By	N.POLLOCK		
Witnessed By	J. CHANDLER		
Borehole Record		Tubing Record	
Run Number	Bit	From	To
ONE	12.25"	SURFACE	690'
TWO	7.88"	690'	8052'
Casing Record	Size	Wgt/Ft	Top
Surface String	8.63	24#	SURFACE
Prot. String			
Production String	4.5	11.6#	SURFACE
Liner			


<<< Fold Here >>>

All interpretations are opinions based on inferences from electrical or other measurements and we cannot and do not guarantee the accuracy or correctness of any interpretation, and we shall not, except in the case of gross or willful negligence on our part, be liable or responsible for any loss, costs, damages, or expenses incurred or sustained by anyone resulting from any interpretation made by any of our officers, agents or employees. These interpretations are also subject to our general terms and conditions set out in our current Price Schedule.

Comments

RAN CBL TO VERIFY CEMENT BOND

THANK YOU FOR USING WARRIOR !!!!!!!

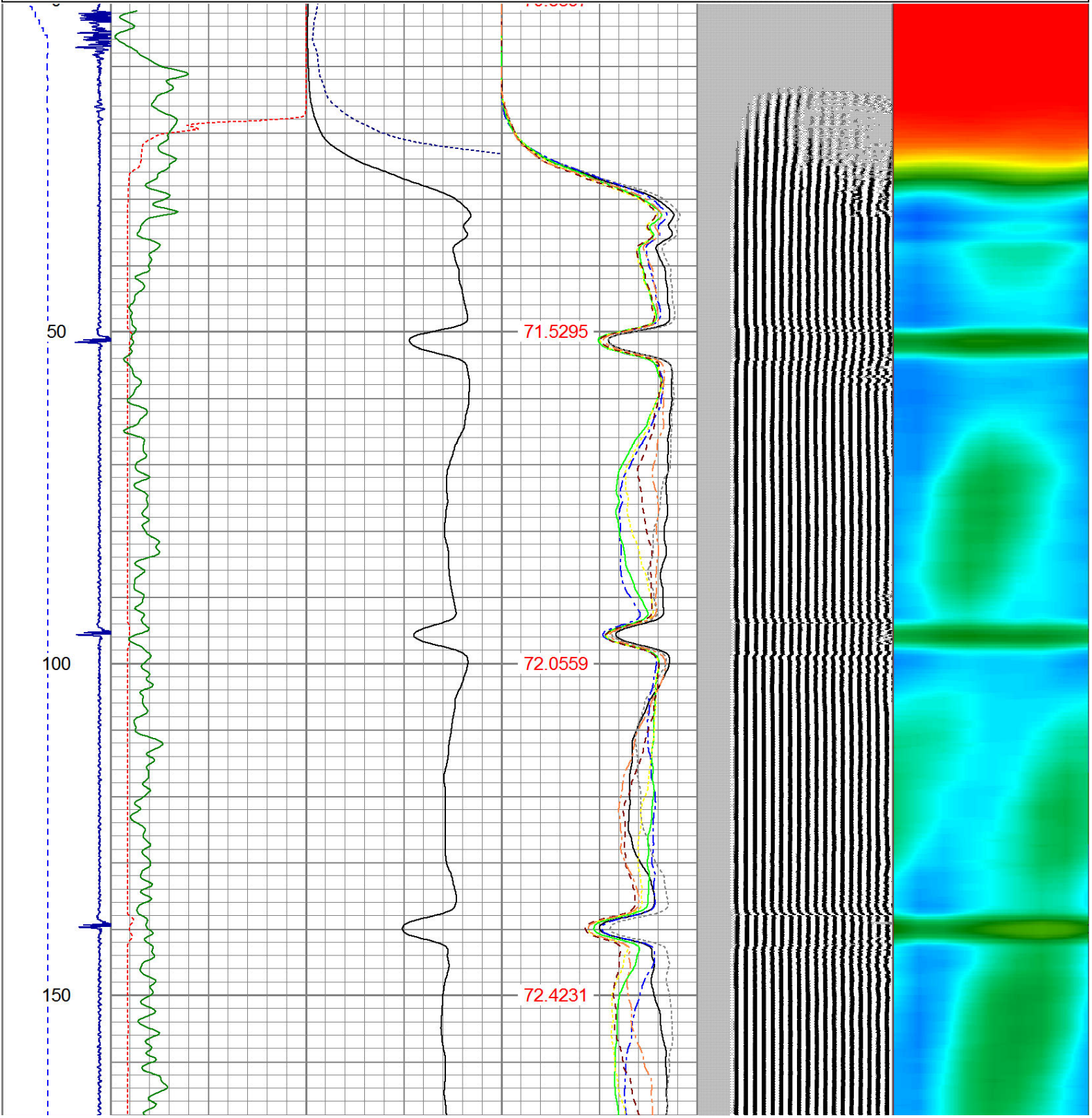
Sensor	Offset (ft)	Schematic	Description	Len (ft)	OD (in)	Wt (lb)
			1_4	1.00	1.36	5.00

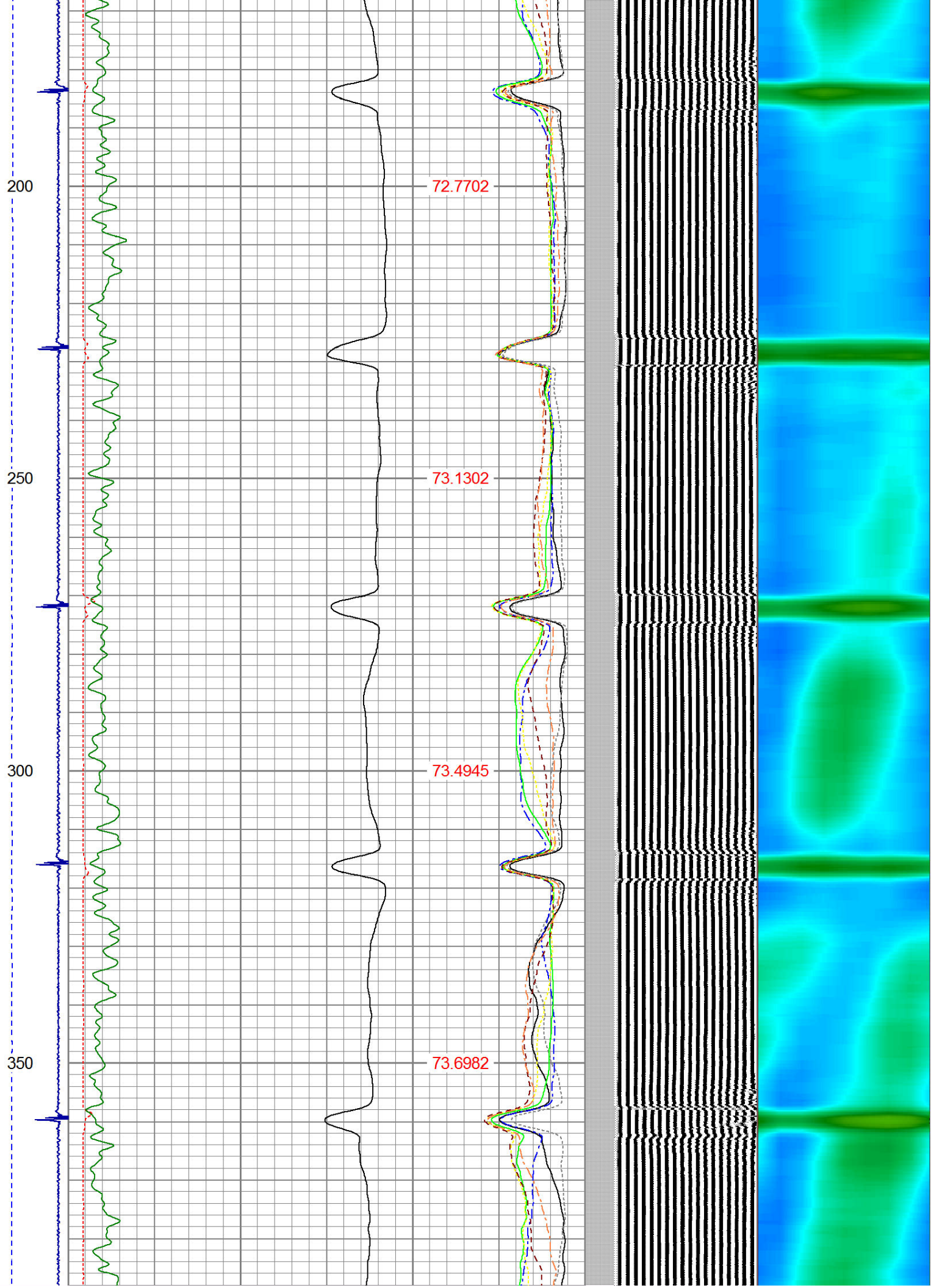
				PTS275	2.83	2.75	
HEADVOLT	16.13						
IntTemp	14.71						
WVF3FT	11.46			RBT-Probe (Base)	8.92	2.75	90.00
WVFCAL	11.46			Probe Radii Bond Tool with Digital Telemetry			
WVFS1	11.46						
WVFS2	11.46						
WVFS3	11.46						
WVFS4	11.46						
WVFS5	11.46						
WVFS6	11.46						
WVFS7	11.46						
WVFS8	11.46						
WVF5FT	10.46						
CNLSC	6.00			CNT-Probe_B (275)	2.88	2.75	40.00
CNSSC	5.17			6 bow centralizer			
CCL	3.64						
				GR-Probe (275)	4.33	2.75	30.00
				Probe 2.75"			
GR	0.90						
Dataset: vogl 31-5.db: field/well/run1/pass3 Total Length: 19.96 ft Total Weight: 165.00 lb O.D. 2.75 in							

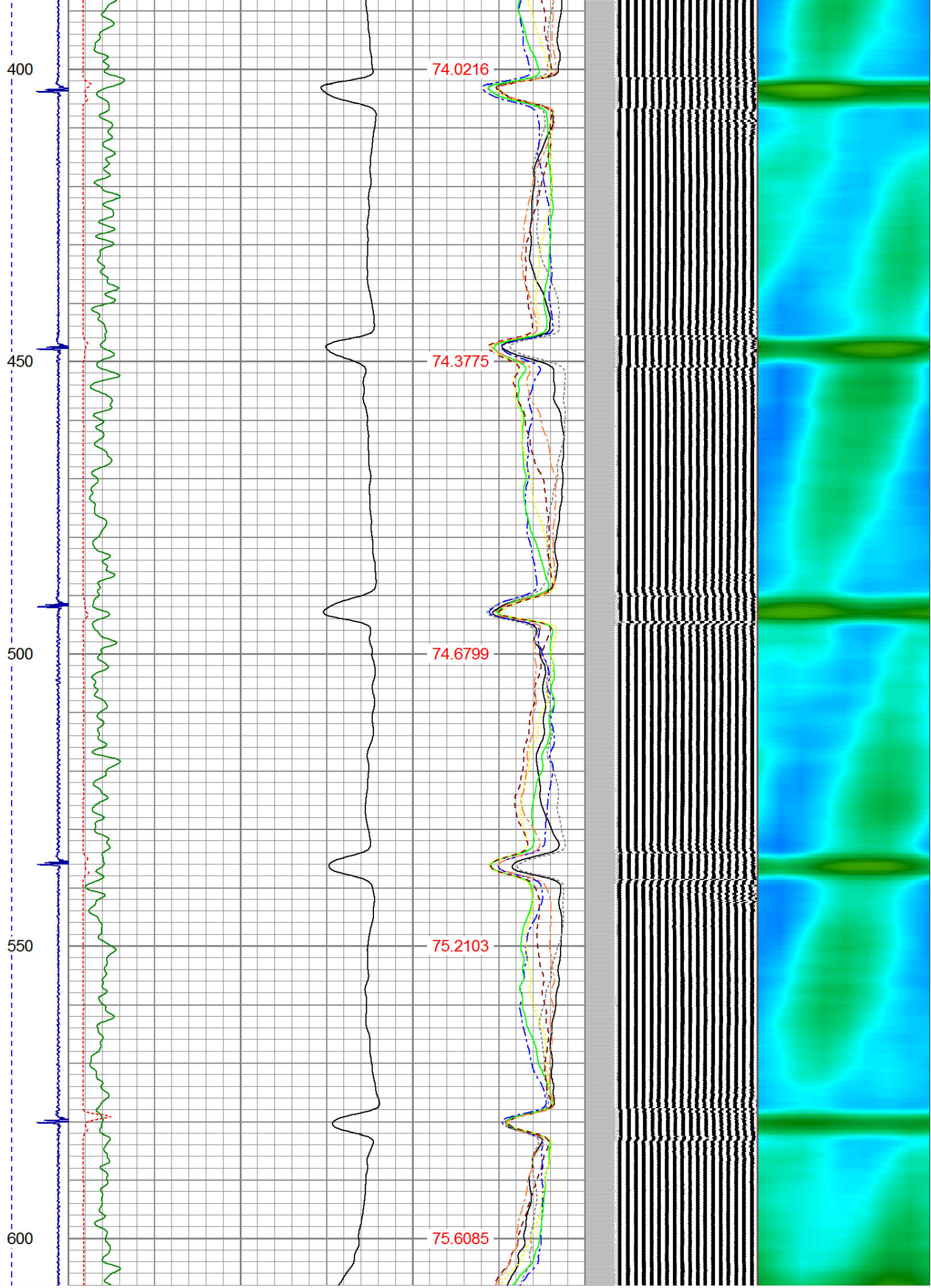
Dataset Creation: Wed Dec 10 07:03:39 2014 by Log 7.0 B1

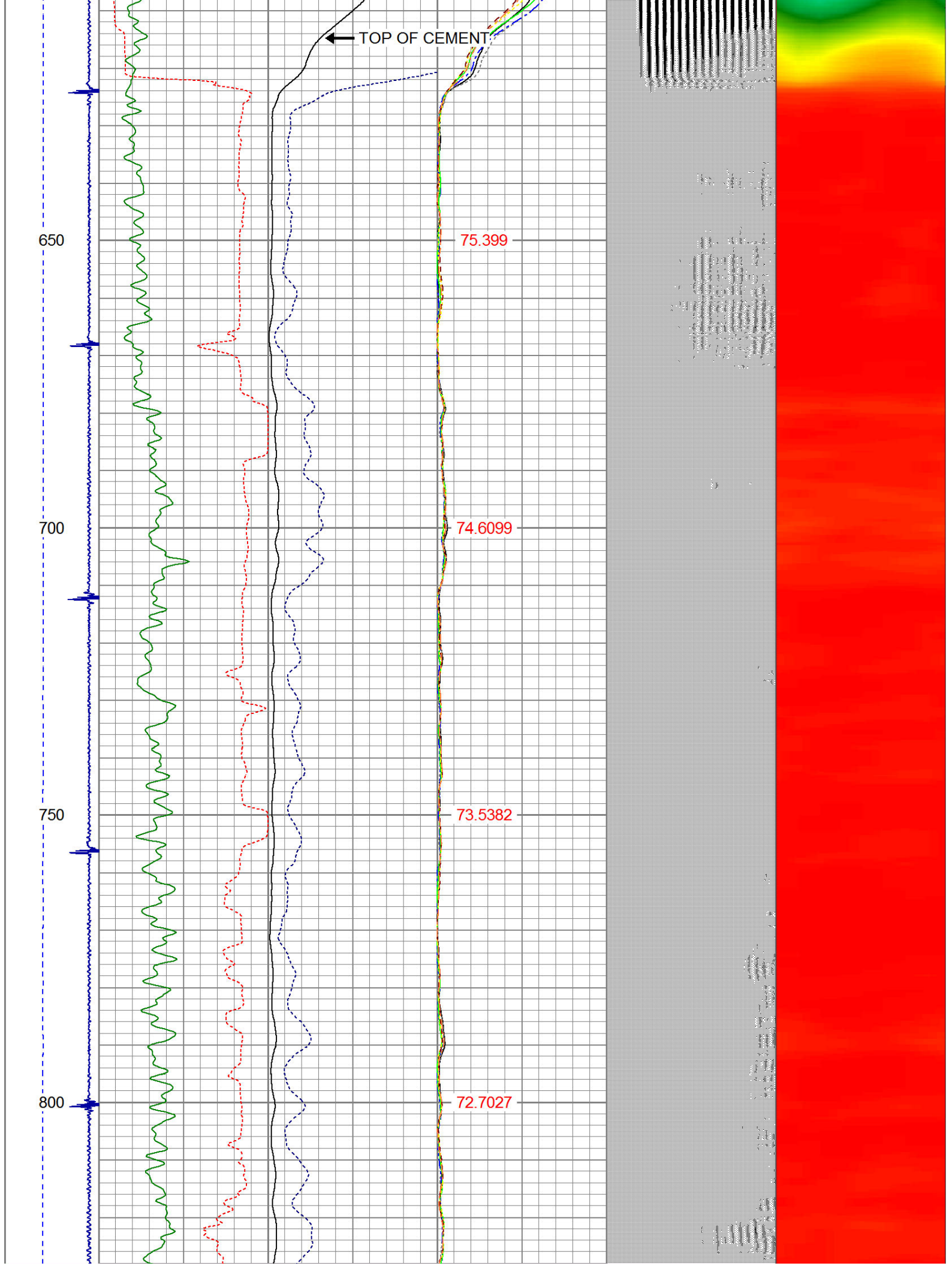
Charted by: Depth in Feet scaled 1:240

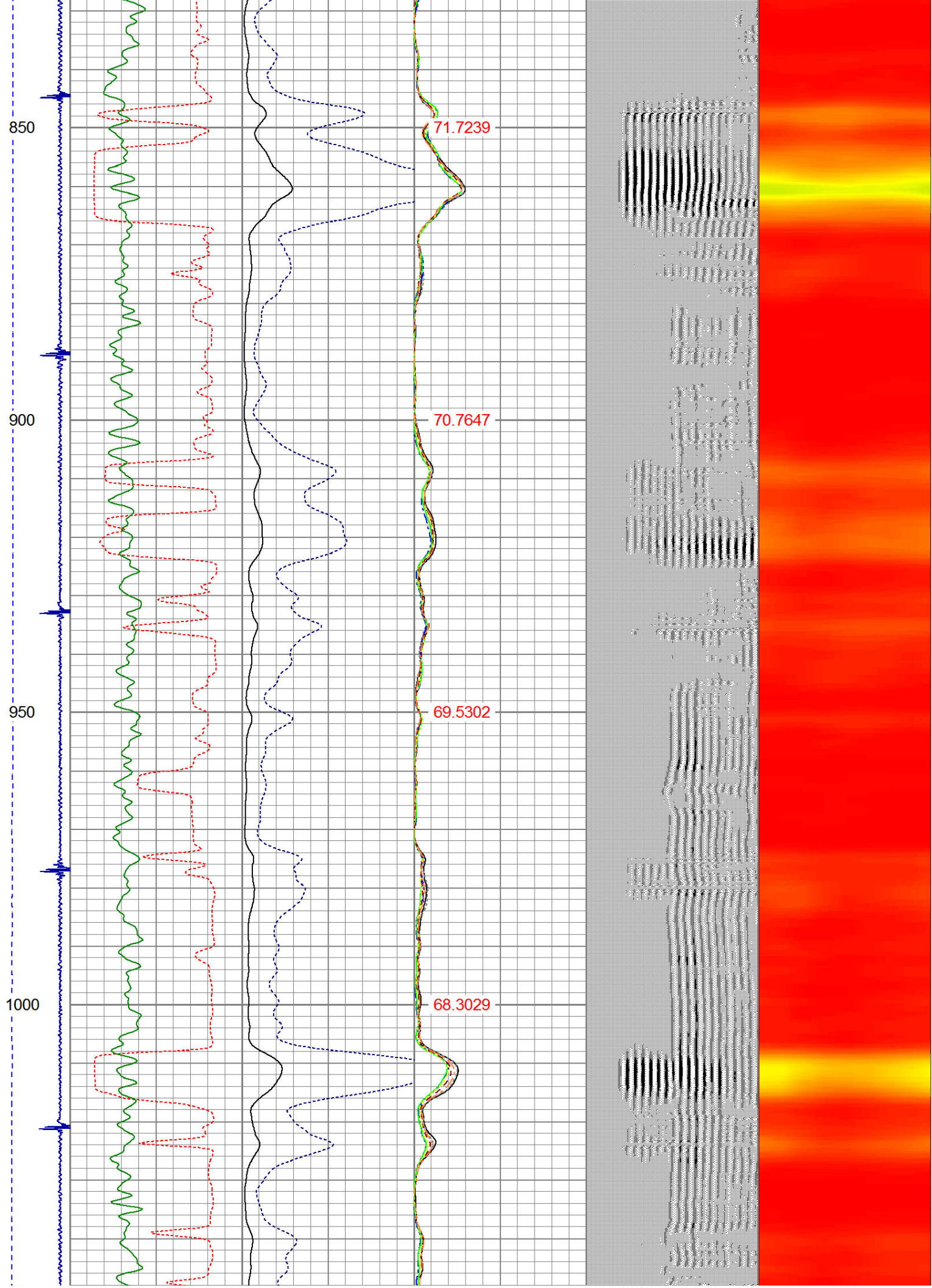
-9	CCL	1	200	TT (usec)	1000	0	AMP (mV)	100	0	AMPS1	100	200	VDL	1200	1	Cement Map	8
LSPD		0	GR (GAPI)		200	0	AMPx5 (mV)		20	0	AMPS2	100			1	100	
(ft/min)		200	GR (GAPI)		400					0	AMPS4	100					
0		250								0	AMPS5	100					
										0	AMPS6	100					
										0	AMPS7	100					
										0	AMPS8	100					
										IntTemp							
										(degF)							

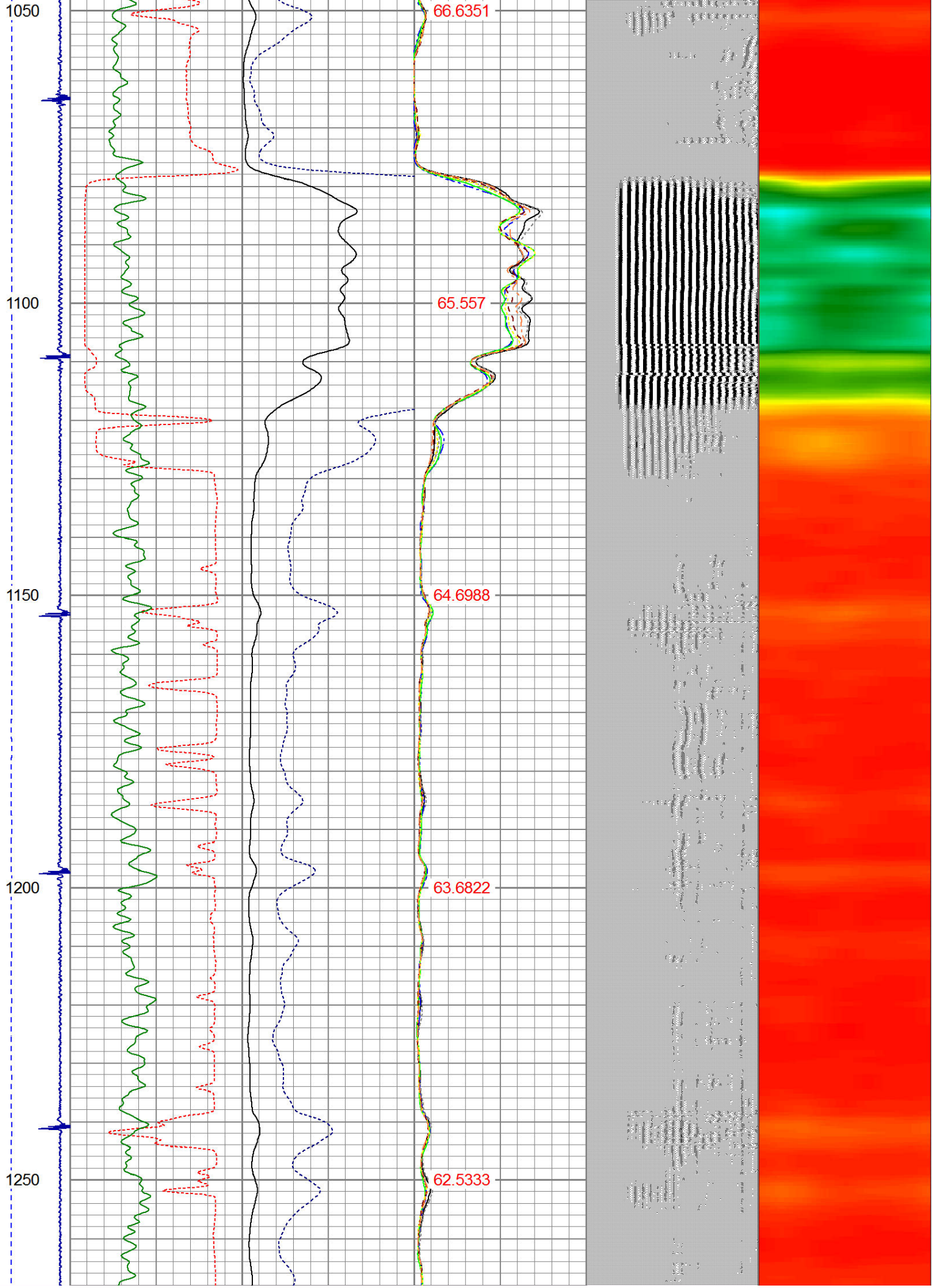


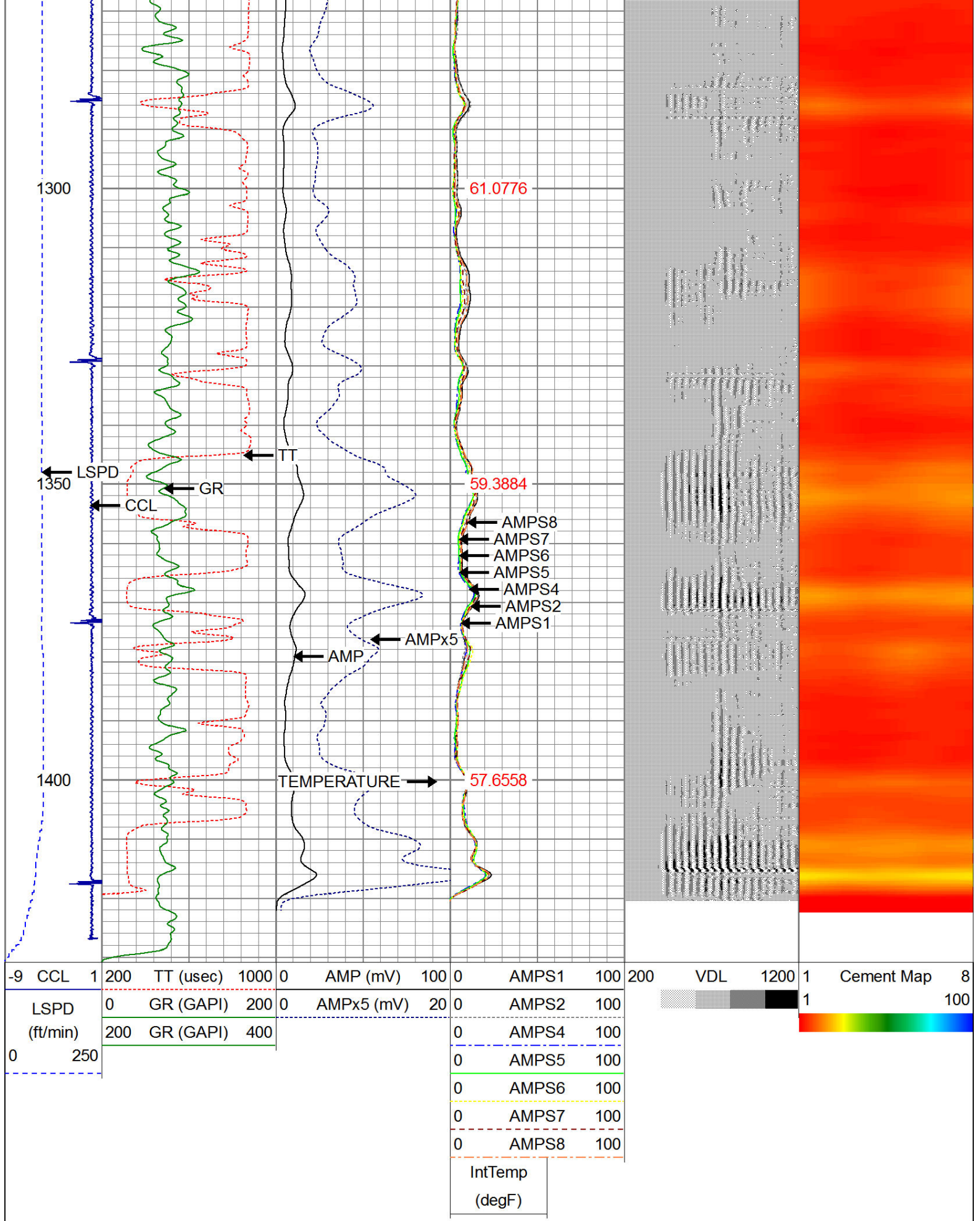














WARRIOR

ENERGY SERVICES

Well	VOGL 31-5
Field	WATTENBERG
County	WELD
State	CO