

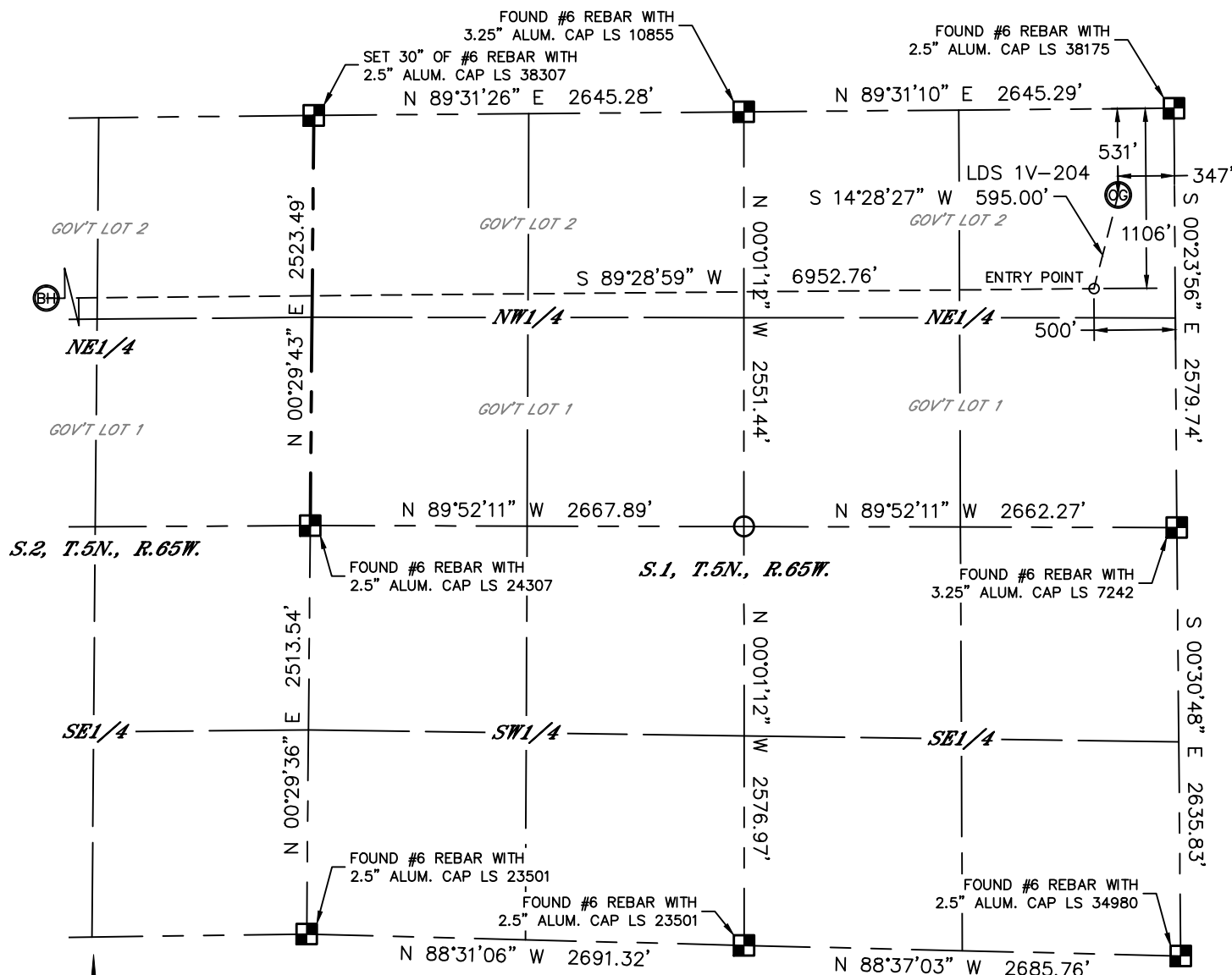


Lat40°, Inc. 1635 Foxtrail Drive, Suite 325 Loveland, CO 970-776-3321

# WELL LOCATION CERTIFICATE

THIS MAP DOES NOT REPRESENT A BOUNDARY SURVEY

SECTION: 1  
TOWNSHIP: 5N  
RANGE: 65W



In accordance with a request from Jake Bragg with PDC ENERGY Lat40°, Inc. has determined the surface location of the LDS 1V-204 to be 531' from the NORTH line and 347' from the EAST line as measured at right angles from the section lines of Section 1, Township 5 North, Range 65 West and the bottom hole to be 1106' from the NORTH line and 2145' from the EAST line as measured at right angles from the section lines of Section 2, Township 5 North, Range 65 West of the Sixth Principal Meridian, County of Weld, State of Colorado.

I hereby state that this Well Location Certificate was prepared by me, or under my direct supervision, that the fieldwork was completed on 8/1/2014, for and on behalf of PDC ENERGY. That this is not a Land Survey Plat or an Improvement Survey Plat, and that it is not to be relied upon for establishment of fence, building, or other future improvement lines.

SURFACE LOCATION  
LAT: 40.43366°N  
LONG: 104.60297°W  
PDOP: 2.5  
ELEV: 4638'  
1/4,1/4: NENE

BOTTOM HOLE  
LAT: 40.43210°N  
LONG: 104.62850°W

ENTRY POINT  
LAT: 40.43208°N  
LONG: 104.60353°W

## LEGEND

- = ALIQUOT MONUMENT AS DESCRIBED
- = CALCULATED POSITION

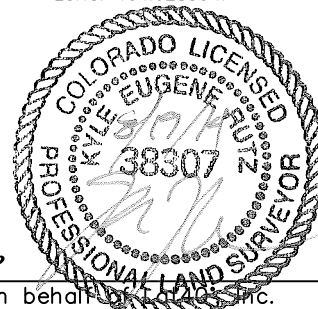
## SHEET 1 OF 2

Kyle E. Rutz—On behalf of Lat40°, Inc.  
Colorado Licensed Professional  
Land Surveyor No. 38307

DATE: 8/19/2014  
PROJECT#: 2014140

## NOTE:

- 1) Bearings shown are Grid Bearings of the Colorado State Plane Coordinate System, North Zone, North American Datum 1983. The lineal dimensions as contained herein are based upon the "U.S. Survey Foot."
- 2) Ground elevations are based on an observed GPS elevation (NAVD 1988 DATUM).
- 3) IMPROVEMENTS: See LOCATION DRAWING for all visible improvements within 500' of disturbed area.
- 4) SURFACE USE: CROP LAND
- 5) INSTRUMENT OPERATOR: WYATT HALL
- 6) NEAREST CULTURAL ITEMS:  
BUILDING: ±955' NW  
BUILDING UNIT: ±1103' NW  
HIGH OCCUPANCY BUILDING UNIT: 5280'+  
DESIGNATED OUTSIDE ACTIVITY AREA: 5280'+  
PUBLIC ROAD: ±329' E (CR 49)  
ABOVEGROUND UTILITY: ±313' E  
RAILROAD: 5280'+  
PROPERTY LINE: ±347' E



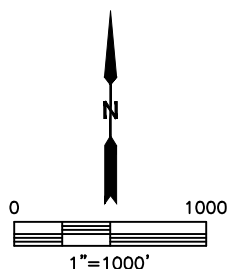
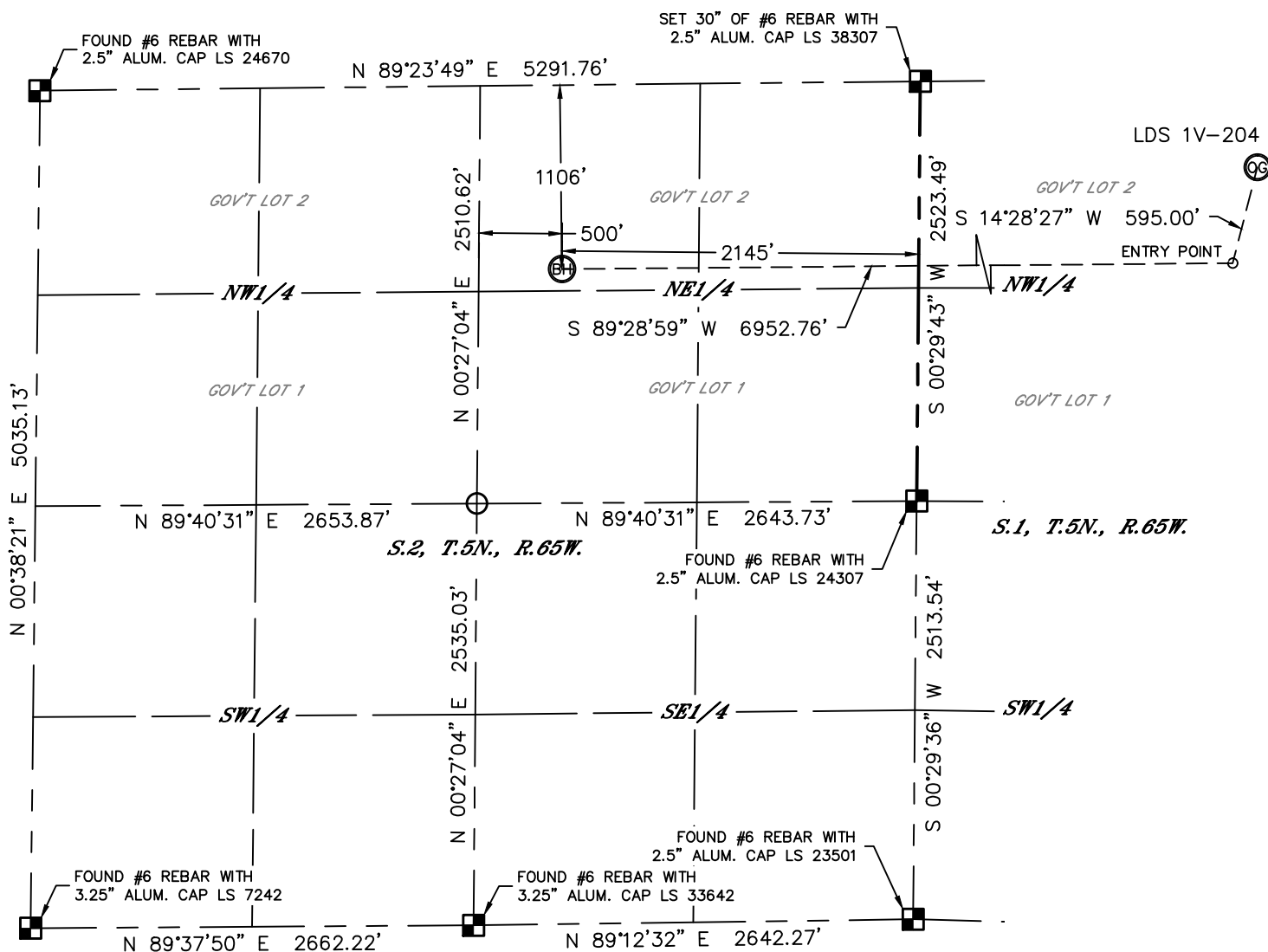


Lat40°, Inc. 1635 Foxtrail Drive, Suite 325 Loveland, CO 970-776-3321

# WELL LOCATION CERTIFICATE

THIS MAP DOES NOT REPRESENT A BOUNDARY SURVEY

SECTION: 1  
TOWNSHIP: 5N  
RANGE: 65W



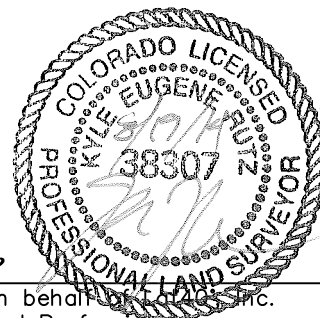
## LEGEND

- = ALIQUOT MONUMENT AS DESCRIBED
- = CALCULATED POSITION

## SHEET 2 OF 2

Kyle E. Rutz-On behalf of Lat40°, Inc.  
Colorado Licensed Professional  
Land Surveyor No. 38307

DATE: 8/19/2014  
PROJECT#: 2014140



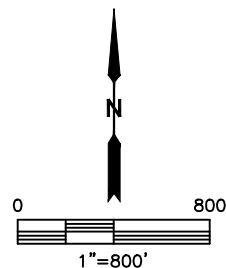
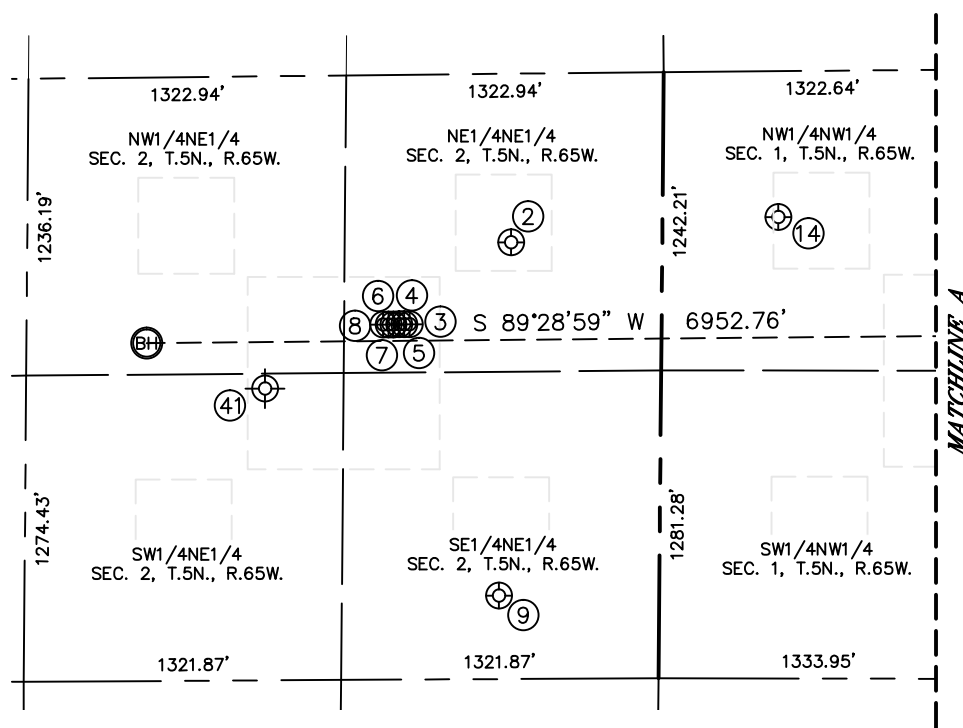
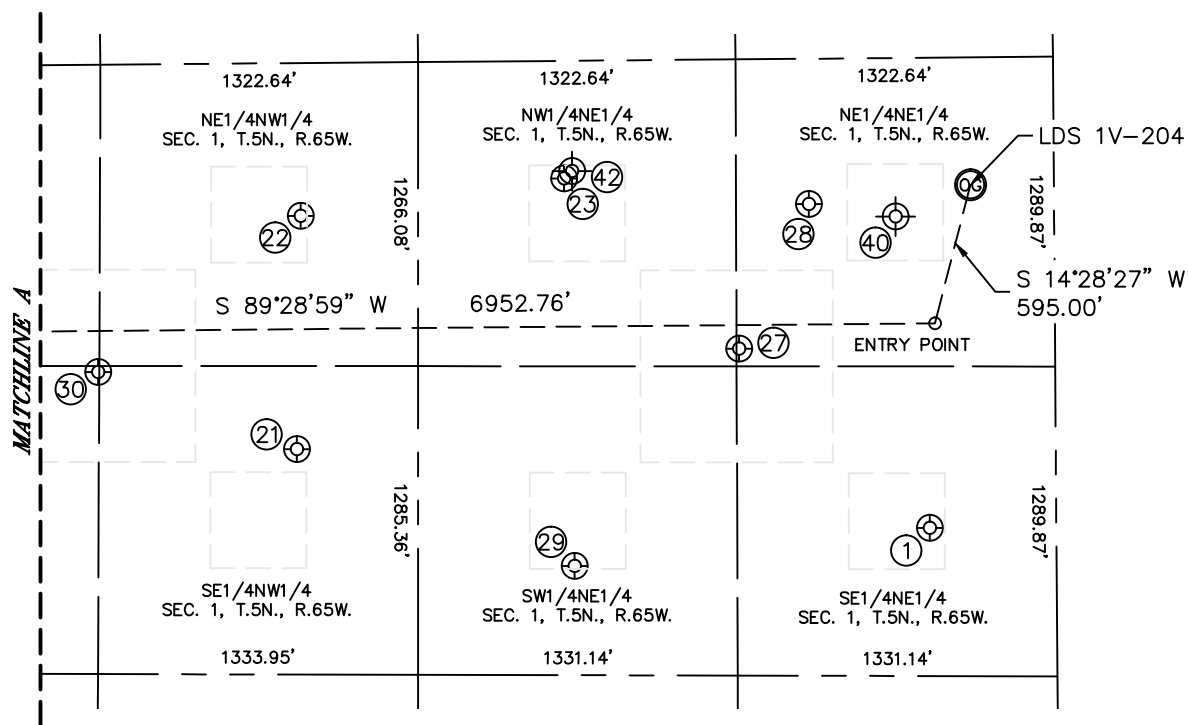


Lat40°, Inc. 1635 Foxtrail Drive, Suite 325 Loveland, CO 970-776-3321

# SITE SKETCH

LDS 1V-204

SECTION: 1  
TOWNSHIP: 5N  
RANGE: 65W



SHEET 1 OF 2

DATE: 8/19/2014  
PROJECT#: 2014140



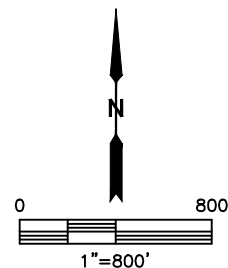
Lat40°, Inc. 1635 Foxtrail Drive, Suite 325 Loveland, CO 970-776-3321

## SITE SKETCH

LDS 1V-204

SECTION: 1  
TOWNSHIP: 5N  
RANGE: 65W

WELL NO.	WELL NAME	SHL FOOTAGE				SHL LAT°	SHL LONG°	PDOP	ELEV (FT.)	1/4/1/4
1	BJB 2	1957	FNL	527	FEL	40.42975	-104.60363	2.2	4614	SENE
2	FRUDDEN 1	702	FNL	630	FEL	40.43321	-104.62303	2.6	4647	NENE
3	NOFFSINGER 2VD	1039	FNL	1049	FEL	40.43228	-104.62456	2.8	4647	NENE
4	NOFFSINGER 2SD	1039	FNL	1072	FEL	40.43228	-104.62464	2.7	4647	NENE
5	NOFFSINGER 2RD	1039	FNL	1094	FEL	40.43228	-104.62472	2.6	4647	NENE
6	NOFFSINGER 2C	1040	FNL	1117	FEL	40.43228	-104.62480	2.6	4647	NENE
7	NOFFSINGER 32-2D	1040	FNL	1138	FEL	40.43228	-104.62488	2.6	4647	NENE
8	NOFFSINGER 31-2D	1039	FNL	1144	FEL	40.43228	-104.62496	2.6	4647	NENE
9	CARACCIOLI 1	2173	FNL	668	FEL	40.42917	-104.62326	1.9	4644	SENE
14	GATEWOOD 4-1	608	FNL	482	FWL	40.43347	-104.61903	2.0	4641	NWNW
21	GATEWOOD 6-1	1608	FNL	2154	FWL	40.43072	-104.61309	2.5	4636	SENW
22	GATEWOOD 3-1	637	FNL	2162	FWL	40.43338	-104.61300	2.2	4638	NENW
23	BJB 6I	489	FNL	2040	FEL	40.43378	-104.60905	2.0	4641	NWNE
27	BJB 5	1205	FNL	1317	FEL	40.43181	-104.60646	2.8	4640	NENE
28	BJB 4	606	FNL	1021	FEL	40.43346	-104.60540	2.9	4637	NENE
29	BJB 3	2103	FNL	2007	FEL	40.42935	-104.60895	1.8	4632	SWNE
30	GATEWOOD 5	1280	FNL	1324	FWL	40.43162	-104.61605	1.7	4639	SWNW
40	NOFFSINGER 1	660	FNL	660	FEL	40.43322	-104.60410	NA	NA	NENE
41	WAGNER-EHRLICH 1	1300	FNL	1651	FEL	40.43111	-104.62664	NA	4646	SWNE
42	BJB 1	459	FNL	2007	FEL	40.43386	-104.60895	NA	4639	NWNE



***SHEET 2 OF 2***

NOTE: THE ABANDONED WELL DATA SHOWN IN RED ABOVE WAS OBTAINED FROM COGCC SCOUT CARDS.

DATE: 8/19/2014  
PROJECT#: 2014140