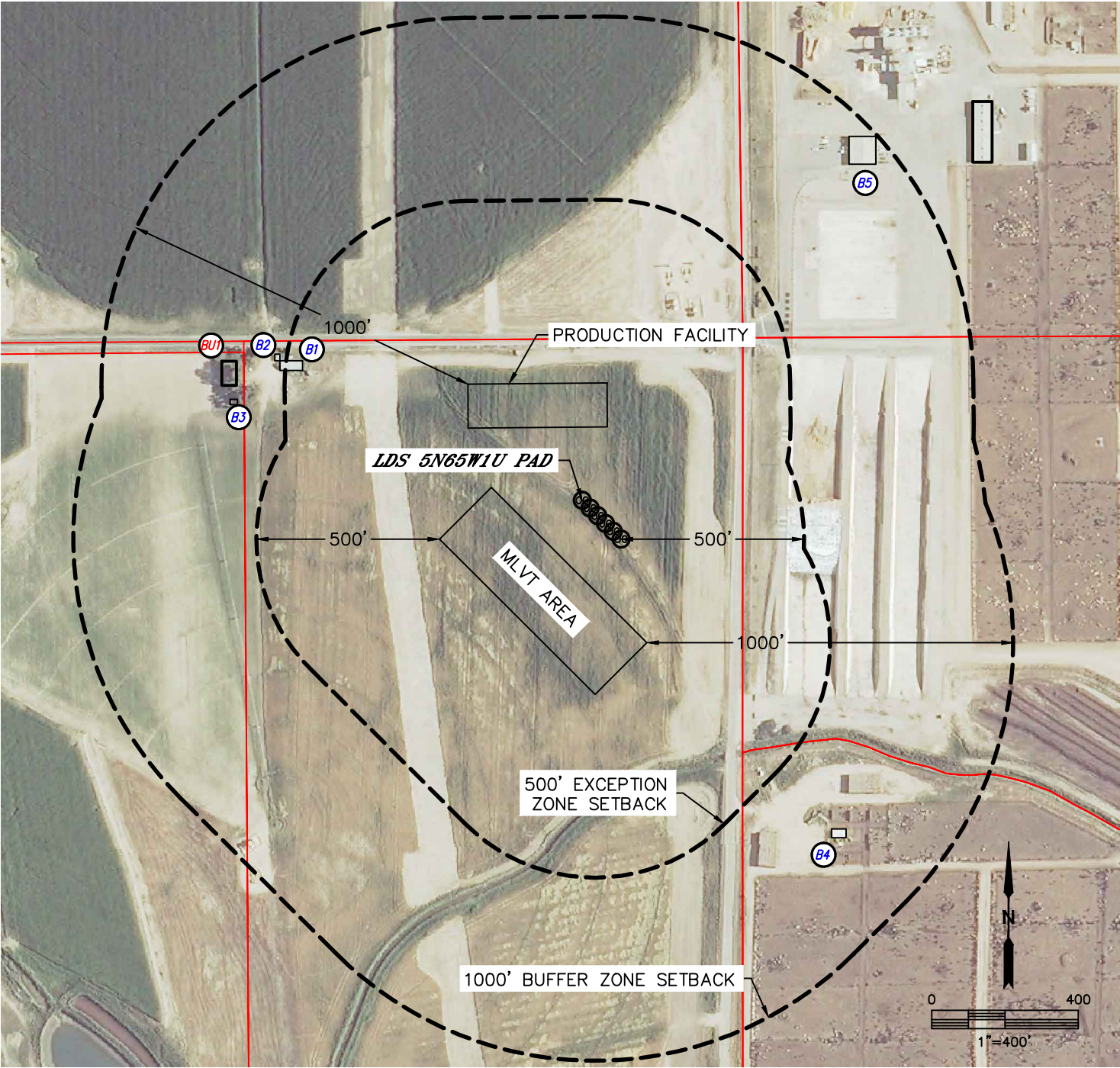




NOTIFICATION ZONE DRAWING

LDS 5N65W1U PAD

SECTION: 1
TOWNSHIP: 5N
RANGE: 65W



LEGEND

- PROPERTY LINE
- (B1) BUILDING
- (BU1) BUILDING UNIT

EXCEPTION ZONE:

NO EXISTING BUILDING UNITS WITHIN EXCEPTION ZONE

BUFFER ZONE:

(BU1) BUILDING UNIT BU1 ±632' W

MEASURED FROM NEAREST OF	BUILDING	BUILDING UNIT	HIGH OCCUPANCY BUILDING UNIT	DESIGNATED OUTSIDE ACTIVITY AREA	PUBLIC ROAD	ABOVEGROUND UTILITY	RAILROAD	PROPERTY LINE
PROPOSED WELLHEAD	±841' NW	±994' NW	5280'+	5280'+	±307' E (CR 49)	±291' E	5280'+	±326' E
EDGE OF PRODUCTION FACILITY	±452' NW	±632' W	5280'+	5280'+	±62' N (CR 62)	±98' N	5280'+	±126' N
EDGE OF MLVT AREA	±590' NW	±696' NW	5280'+	5280'+	±228' E (CR 49)	±214' E	5280'+	±258' E