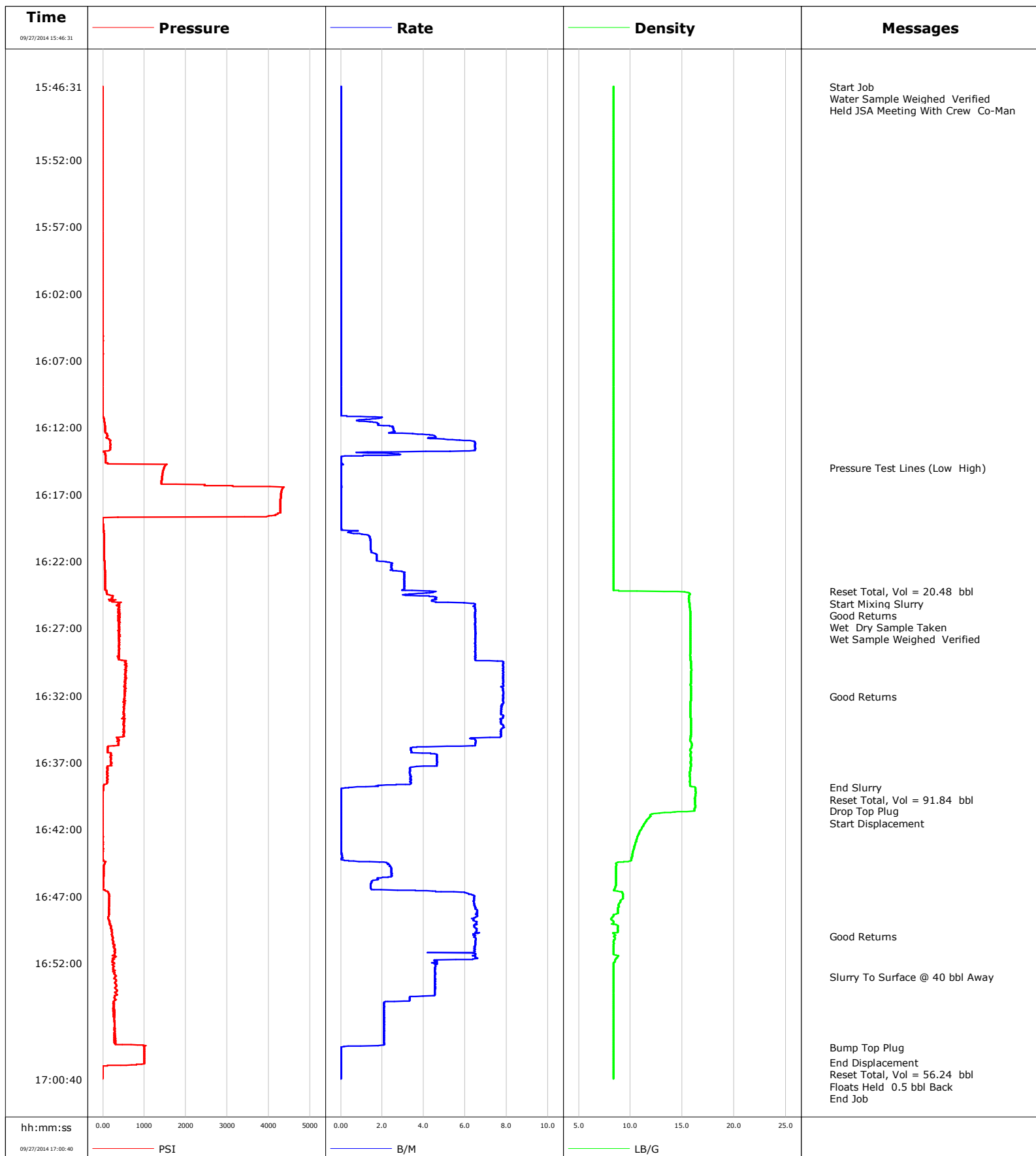


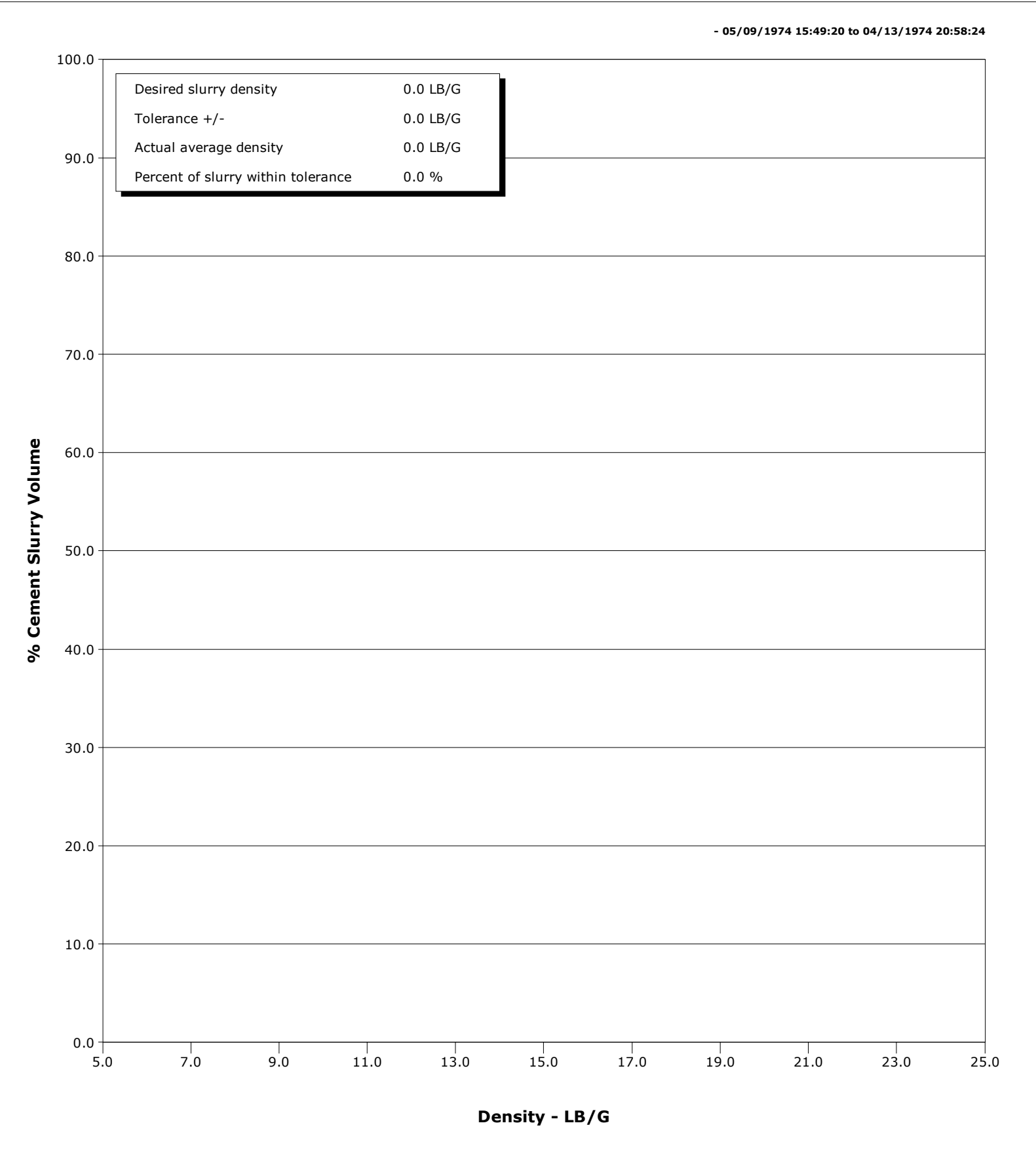
Well	Nelson Farm #3	Client	Extraction Oil Gas, LLC
Field	Wattenburg	SIR No.	C459-03168
Engineer	Jason Holt	Job Type	9 5/8" Surface
Country	United States	Job Date	09-27-2014





Cementing Qa/Qc Density Report

Well	Nelson Farm #3	Client	Extraction Oil Gas, LLC
Field	Wattenburg	SIR No.	C459-03168
Engineer	Jason Holt	Job Type	9 5/8" Surface
Country	United States	Job Date	09-27-2014



Cementing Service Report

				Customer Extraction Oil & Gas, LLC			Job Number C459-03168	
Well Nelson Farm #3 0631575758			Location (legal) Sec.28-T07N-R67W			Schlumberger Location Cheyenne, WY		Job Start Sep/27/2014
Field Wattenburg		Formation Name/Type Dirty-Sandstone		Deviation deg	Bit Size 13.5 in		Well MD 775.7 ft	Well TVD 775.7 ft
County Weld		State/Province Colorado		BHP psi	BHST 89 degF	BHCT 81 degF	Pore Press. Gradient lb/gal	
Well Master 0631575758		API/UWI 05-123-39958						
Rig Name Extreme 7	Drilled For Oil & Gas		Service Via Land	Casing/Liner				
	Depth, ft	Size, in	Weight, lb/ft	Grade	Thread			
Offshore Zone	Well Class New		Well Type New Well Completion	775.7	9.6	36.0	H-40	STC
	0.0	0.0	0.0					
Drilling Fluid Type Bentonite		Max. Density 8.70 lb/gal	Plastic Viscosity cP	Tubing/Drill Pipe				
	T/D	Depth, ft	Size, in	Weight, lb/ft	Grade	Thread		
Service Line Cementing	Job Type 9 5/8" Surface							
Max. Allowed Tub. Press psi	Max. Allowed Ann. Press psi		WH Connection 9 5/8"	Perforations/Open Hole				
	Top, ft	Bottom, ft	shot/ft	No. of Shots	Total Interval ft			
Service Instructions	ft	ft						
	ft	ft					Diameter in	
	ft	ft						
	Treat Down Casing	Displacement 56.6 bbl	Packer Type	Packer Depth ft				
	Tubing Vol. bbl	Casing Vol. 60.0 bbl	Annular Vol. 70.7 bbl	Openhole Vol. bbl				
Casing/Tubing Secured <input checked="" type="checkbox"/>		1 Hole Vol. Circulated prior to Cement <input checked="" type="checkbox"/>		Casing Tools		Squeeze Job		
Lift Pressure 402 psi		Shoe Type Float		Squeeze Type				
Pipe Rotated <input type="checkbox"/>		Pipe Reciprocated <input type="checkbox"/>		Shoe Depth 775.7 ft		Tool Type		
No. Centralizers		Top Plugs 1	Bottom Plugs	Stage Tool Type		Tool Depth ft		
Cement Head Type Single		Stage Tool Depth ft		Tail Pipe Size in				
Job Scheduled For Sep/27/2014		Arrived on Location Sep/27/2014	Leave Location Sep/27/2014	Collar Type Float		Tail Pipe Depth ft		
				Collar Depth 731.6 ft		Sqz. Total Vol. bbl		
Date	Time 24-hr clock	Treating Pressure PSI	Flow Rate B/M	Density LB/G	Volume BBL	Message		
09/27/2014	15:46:31	-2	0.0	8.35	0.0	Started Acquisition		
09/27/2014	15:46:32	-1	0.0	8.35	0.0	Water Sample Weighed Verified		
09/27/2014	15:51:31	-1	0.0	8.35	0.0			
09/27/2014	15:56:31	-1	0.0	8.35	0.0			
09/27/2014	16:01:31	-1	0.0	8.35	0.0			
09/27/2014	16:06:31	0	0.0	8.35	0.0			
09/27/2014	16:11:31	33	0.8	8.35	0.5			
09/27/2014	16:15:01	1474	0.0	8.35	10.9	Pressure Test Lines (Low High)		
09/27/2014	16:16:31	4339	0.0	8.35	10.9			
09/27/2014	16:21:31	29	1.7	8.35	13.4			
09/27/2014	16:24:16	92	4.6	14.58	0.5	Reset Total, Vol = 20.48 bbl		
09/27/2014	16:24:54	302	4.4	15.63	3.1	Start Mixing Slurry		
09/27/2014	16:25:04	361	4.6	15.66	3.9	Good Returns		
09/27/2014	16:25:14	382	6.5	15.69	4.9	Wet Dry Sample Taken		
09/27/2014	16:25:26	372	6.5	15.71	6.2	Wet Sample Weighed Verified		
09/27/2014	16:26:31	402	6.5	15.79	13.2			
09/27/2014	16:31:31	534	7.8	15.82	48.4			
09/27/2014	16:32:05	527	7.8	15.82	52.8	Good Returns		
09/27/2014	16:36:31	208	4.6	15.79	83.7			
09/27/2014	16:38:54	1	0.4	16.21	92.3	End Slurry		
09/27/2014	16:39:10	-1	0.0	16.27	0.0	Reset Total, Vol = 91.84 bbl		

Well Nelson Farm #3 0631575758			Field Wattenburg		Job Start Sep/27/2014	Customer Extraction Oil & Gas, LLC		Job Number C459-03168
Date	Time 24-hr clock	Treating Pressure PSI		Flow Rate B/M	Density LB/G	Volume BBL	Message	
09/27/2014	16:41:31	-1		0.0	11.40	0.0		
09/27/2014	16:46:31	4		1.5	8.45	4.3		
09/27/2014	16:50:01	239		6.5	8.38	26.4	Good Returns	
09/27/2014	16:51:31	314		6.5	8.78	36.0		
09/27/2014	16:53:03	298		4.5	8.35	43.5	Slurry To Surface @ 40 bbl Away	
09/27/2014	16:56:31	283		2.1	8.35	54.7		
09/27/2014	16:58:20	999		0.0	8.35	58.2	Bump Top Plug	
09/27/2014	16:59:26	997		0.0	8.36	58.2	End Displacement	
09/27/2014	16:59:53	-6		0.0	8.36	58.2	Reset Total, Vol = 56.24 bbl	
09/27/2014	16:59:57	-6		0.0	8.36	58.2	Floats Held 0.5 bbl Back	

Post Job Summary

Average Pump Rates, bbl/min					Volume of Fluid Injected, bbl				
Slurry 3.8	N2	Mud	Maximum Rate 7.9	Total Slurry 91.8	Mud 0.0	Spacer 23.4	N2		
Treating Pressure Summary, psi					Breakdown Fluid				
Maximum 4366	Final -5	Average 519	Bump Plug to 1000	Breakdown	Type FreshWater	Volume 56.6 bbl	Density 8.34 lb/gal		
Avg. N2 Percent %	Designed Slurry Volume 90.0 bbl		Displacement 56.2 bbl	Mix Water Temp 76 degF	Cement Circulated to Surface? <input checked="" type="checkbox"/>	Volume 16.0 bbl			
Customer or Authorized Representative Brendan Patch			Schlumberger Supervisor Jason Holt			Washed Thru Perfs <input type="checkbox"/>	To ft		
						Circulation Lost <input type="checkbox"/>	Job Completed <input checked="" type="checkbox"/>		
						-	-		