



Scale: 5" / 100'
Measured Depth Log

Well Name Nelson Farm3_Vert_Extraction.mplot

Location Sec.28-T07N-R67W

State CO

County Weld

Country USA

Rig Number Xtreme7

API Number 05-123-39958-00

AFE # 14-203

Region DJ Basin

Field Wattenberg

Spud Date 9/27/2014

Drilling Completed 10/7/2014

Surface Coordinates N 1,443,923.76'
E 3,164,958.10'
Lat 40°33'1.638" N
Long 104°54'23.008" W

Bottom Hole Coordinates X 3,172,349.54'
Y 1,444,195.12'
Lat 40°33'3.819" N
Long 104°52'47.2326" W

Ground Elevation 4973'

K.B. Elevation 4989'

Logged Interval 4000' **To** 6405'

Total Depth 14640'

Formation Niobrara B

Type of Drilling Fluid Water based mud

Operator

Company Extraction Oil & Gas, LLC

Address 1888 Sherman St., Suite 500
Denver, CO 80203

Geologist

Name Hans Woldhousegryn & Edward Knight

Name Hana Valdhauserova & Edward Knight

Company ALS Empirica

Address 6360 W Sam Houston Pkwy N
Suite 100
Houston, TX 77041

Other

Logging start date: 9/29/2014
Logging end date: 10/07/2014
2 man logging service ML-131

Rock Types

UNKNOWN	CHALK	DOLOMITE	BRECCIA
SHALY SANDSTONE	MARLSTONE	CHERT	TILL
SANDSTONE	ANHYDRITE	COAL	BENTONITE
SALT AND PEPPER SAN...	GYPSUM	CLAYSTONE	TUFF
SILTY SHALE	SALT	SHALE GRAY	IGNEOUS
SILTSTONE	SIDERITE or LIMONITE	SHALE COLORED	METAMORPHIC
SHALE	LIMESTONE	CONGLOMERATE	CEMENT

Accessories

Fossils

ALGAE
 AMPHIPORA
 BELEMNITE
 BIOCLASTIC
 BRACHIOIPOD
 BRYOZOA
 CEPHALOPOD
 CORAL
 CRINOID
 ECHINOID

FISH
 FORAMINIFERA

Fossil

GASTROPOD
 OOLITE
 OSTRACOD
 PELECYPOD
 PELLET
 PISOLITE
 PLANT REMAINS
 PLANT SPORES
 SCAPHOPOD
 STROMATOPOROID

Minerals

ANHYDRITIC

Argillaceous

ARGILLITE GRAIN
 BENTONITE
 BITUMENOUS SUBSTANCE
 BRECCIA FRAGMENTS
 CALCAREOUS
 CARBONACEOUS FLAKES
 CHTDK
 CHTLT
 COAL - THIN BEDS
 DOLOMITIC
 FELDSPAR
 FERRUGINOUS PELLET
 FERRUGINOUS

Glauconite

GYPSIFEROUS
 HEAVY MINERAL
 KAOLIN
 MARLSTONE
 MINERAL CRYSTALS
 NODULES
 PHOSPHATE PELLETS
 PYRITE
 SALT CAST
 SANDY
 SILICEOUS
 SILTY
 TUFFACEOUS

Stringer

ANHYDRITE STRINGER
 BENTONITE STRINGER
 COAL STRINGER
 DOLOMITE STRINGER
 GYPSUM STRINGER
 LIMESTONE STRINGER
 MARLSTONE (CALC) STRG
 MARLSTONE (DOL) STRG
 SANDSTONE STRINGER
 SHALE STRINGER
 SILTSTONE STRINGER

Other Symbols

Oil Show

DEAD
 EVEN
 QUESTIONABLE
 SPOTTED STAINING

Porosity

EARTHY
 FENESTRAL

ORGANIC
 PINPOINT
 VUGGY

Engineering

BIT
 CASING
 CONNECTION (LEFT)
 CONNECTION (RIGHT)
 CONNECTION GAS

FORMATION TOP
 GAS SHOW
 MN DEPTH
 NORMAL FAULT
 OIL SHOW
 OVERTURNED STRATA
 REVERSE FAULT
 SIDEWALL CORE (LEFT)
 SIDEWALL CORE (RIGHT)
 SLIDE

Rounding

ANGULAR
 ROUNDED
 SUBANG
 SUBRND

Textures

BOUNDSTONE
 CHALKY

LITHOGRAPHIC
 MICROXLN
 MUDSTONE
 PACKSTONE
 WACKESTONE

Sorting

MODERATE
 POOR
 WELL

F FRACTURE

X INTERCRYSTALLINE

Ø INTEROOLITIC

M MOLDIC

↓ CORE - LOST

■ CORE - RECOVERED

⋮ DST INTERVAL

⚡ FAULT

DS SURVEY

TRIP GAS

◁ WIRELINE TESTED - LEFT

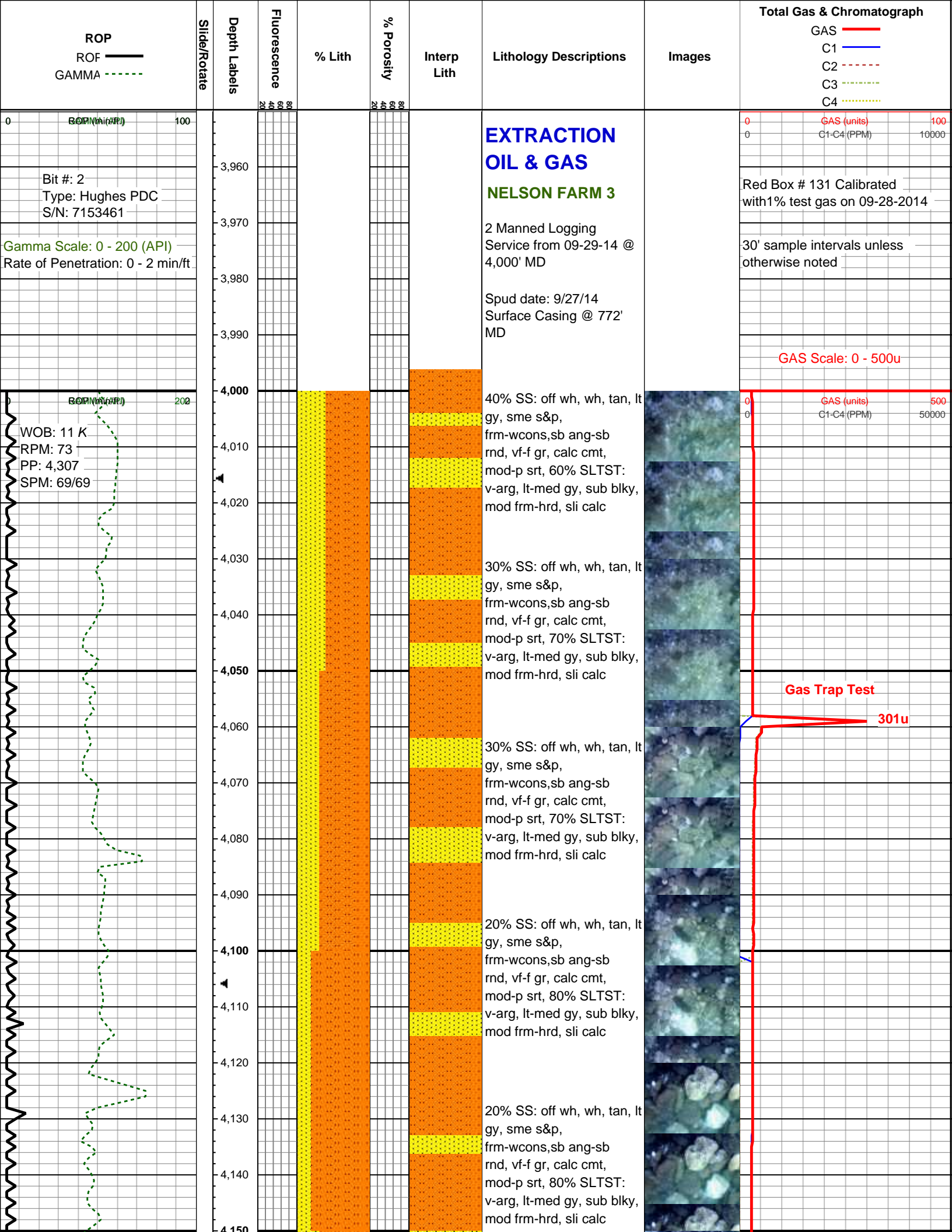
▷ WIRELINE TESTED - RT

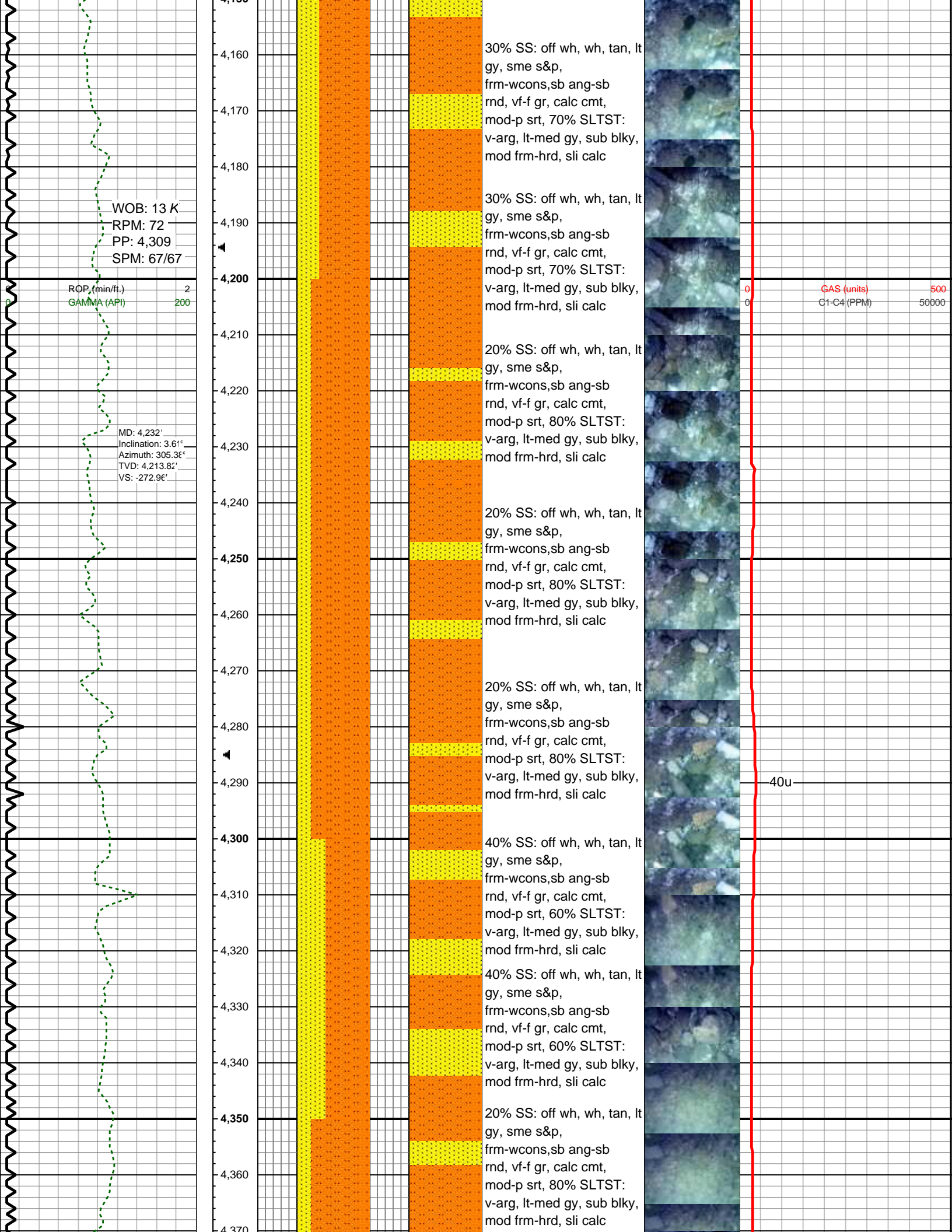
CX CRYPTOXLN

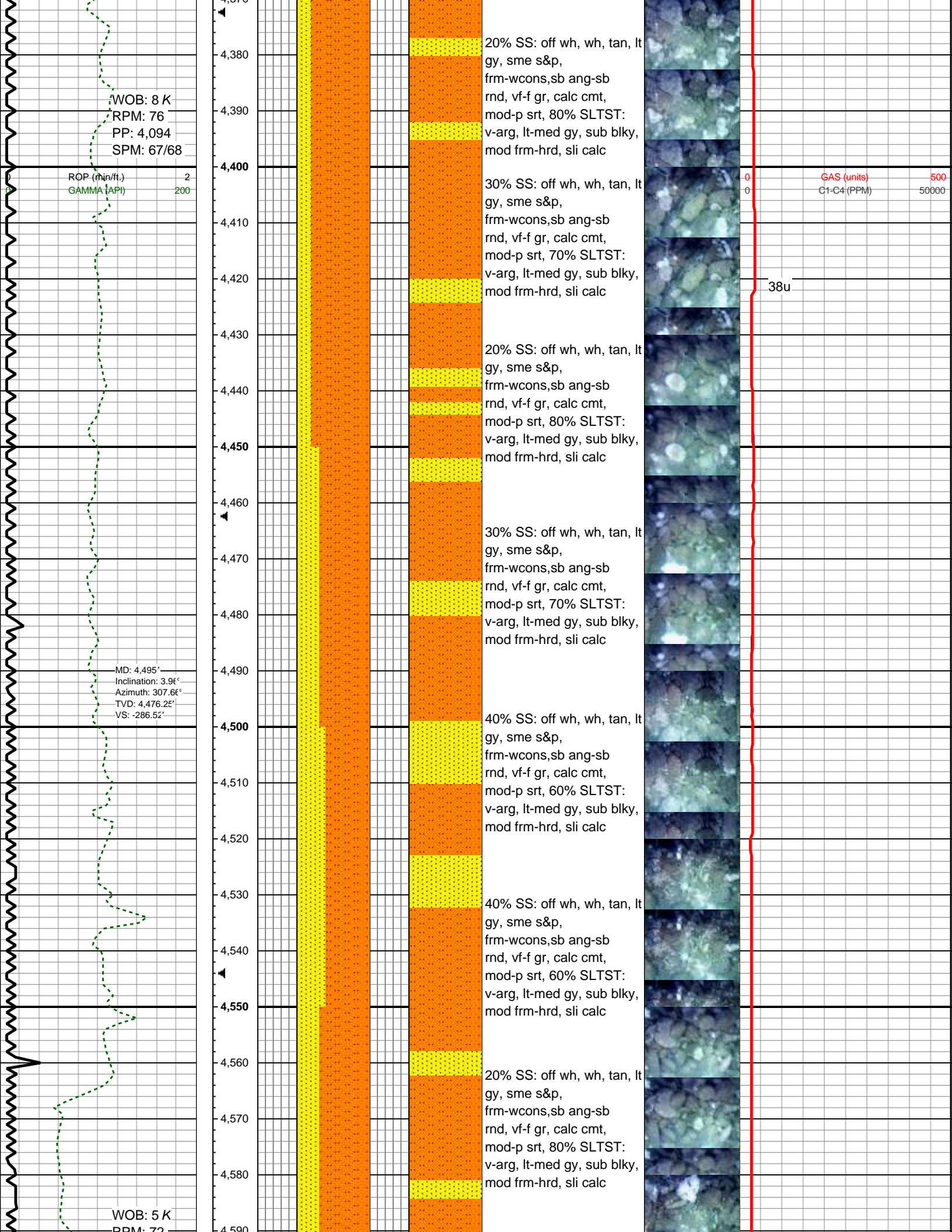
E EARTHY

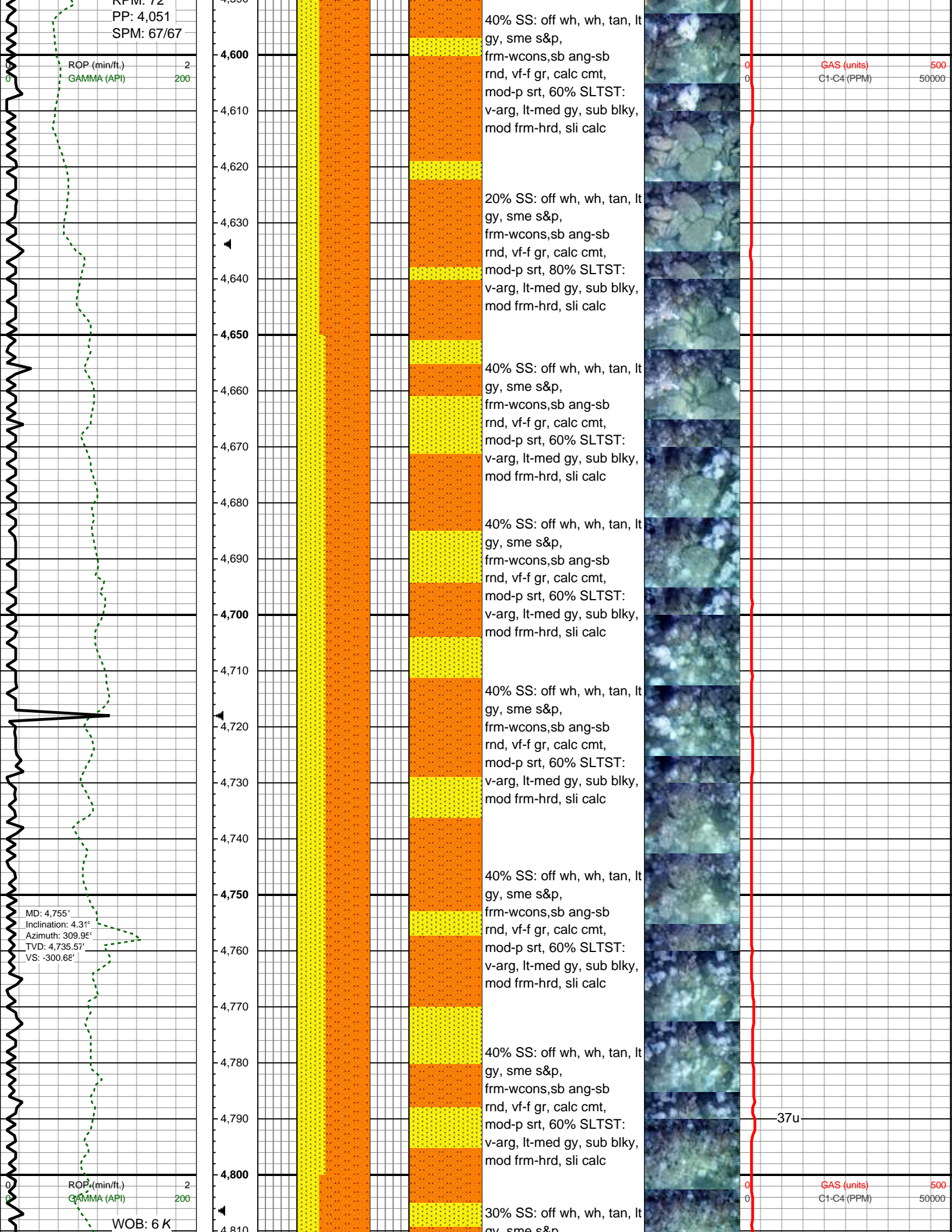
FX FINELYXLN

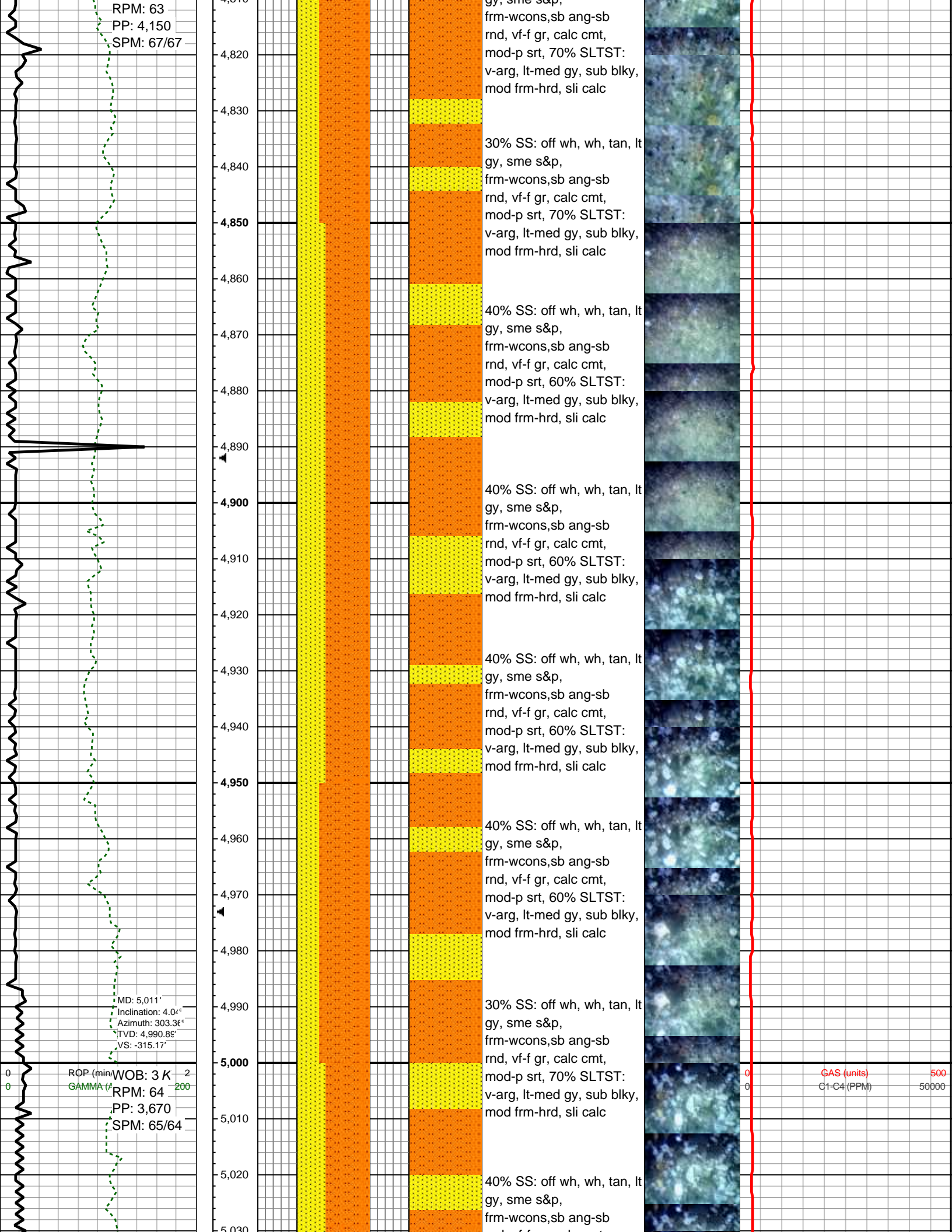
GS GRAINSTONE

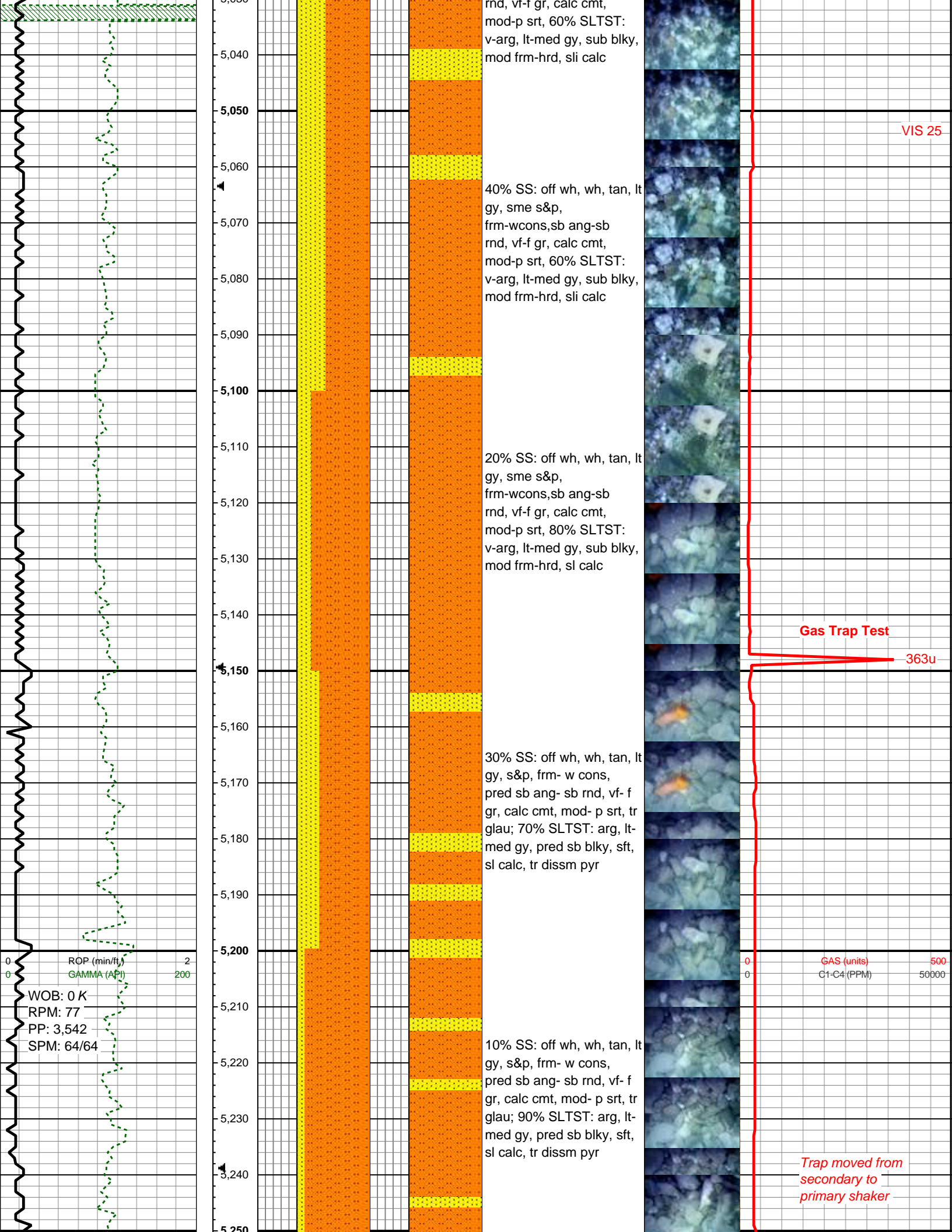


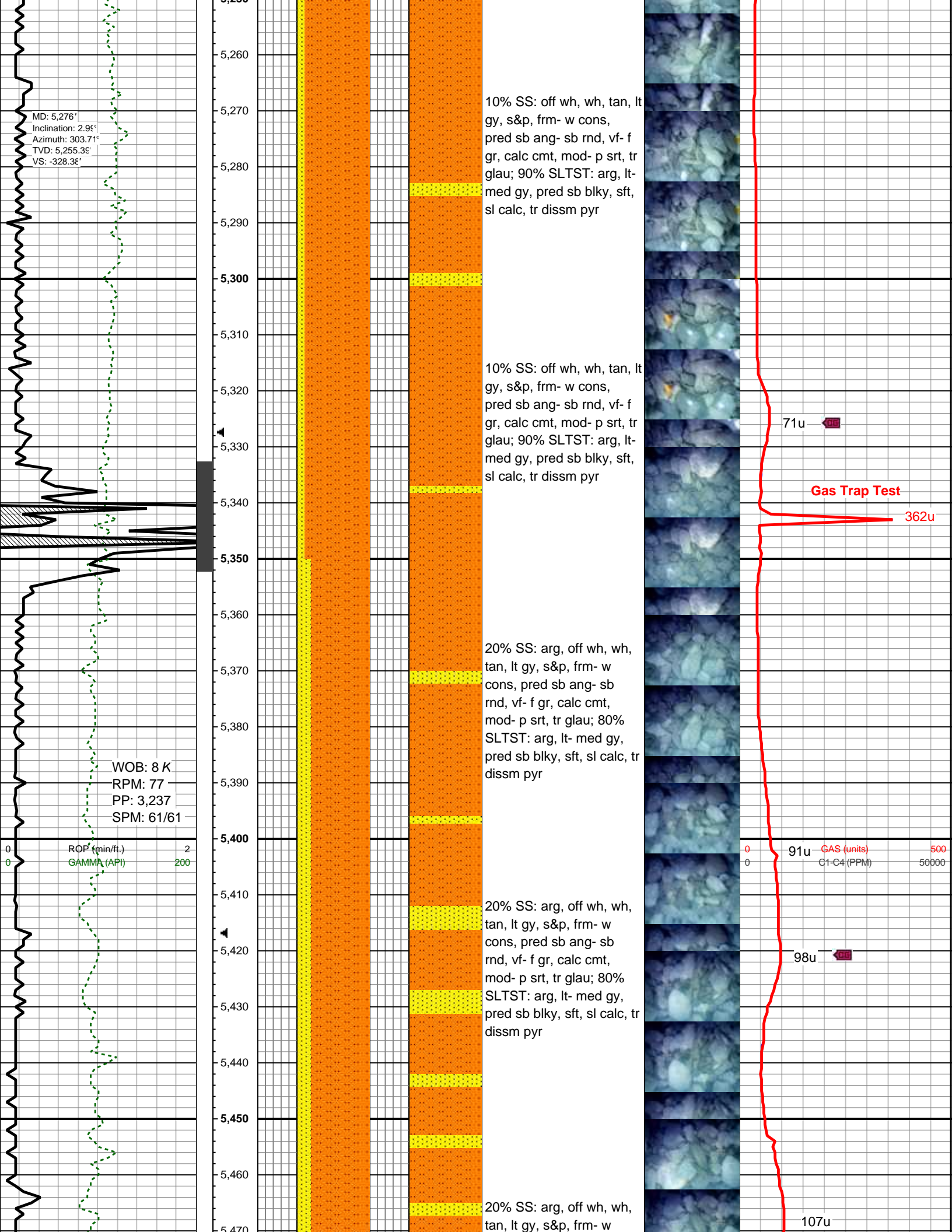


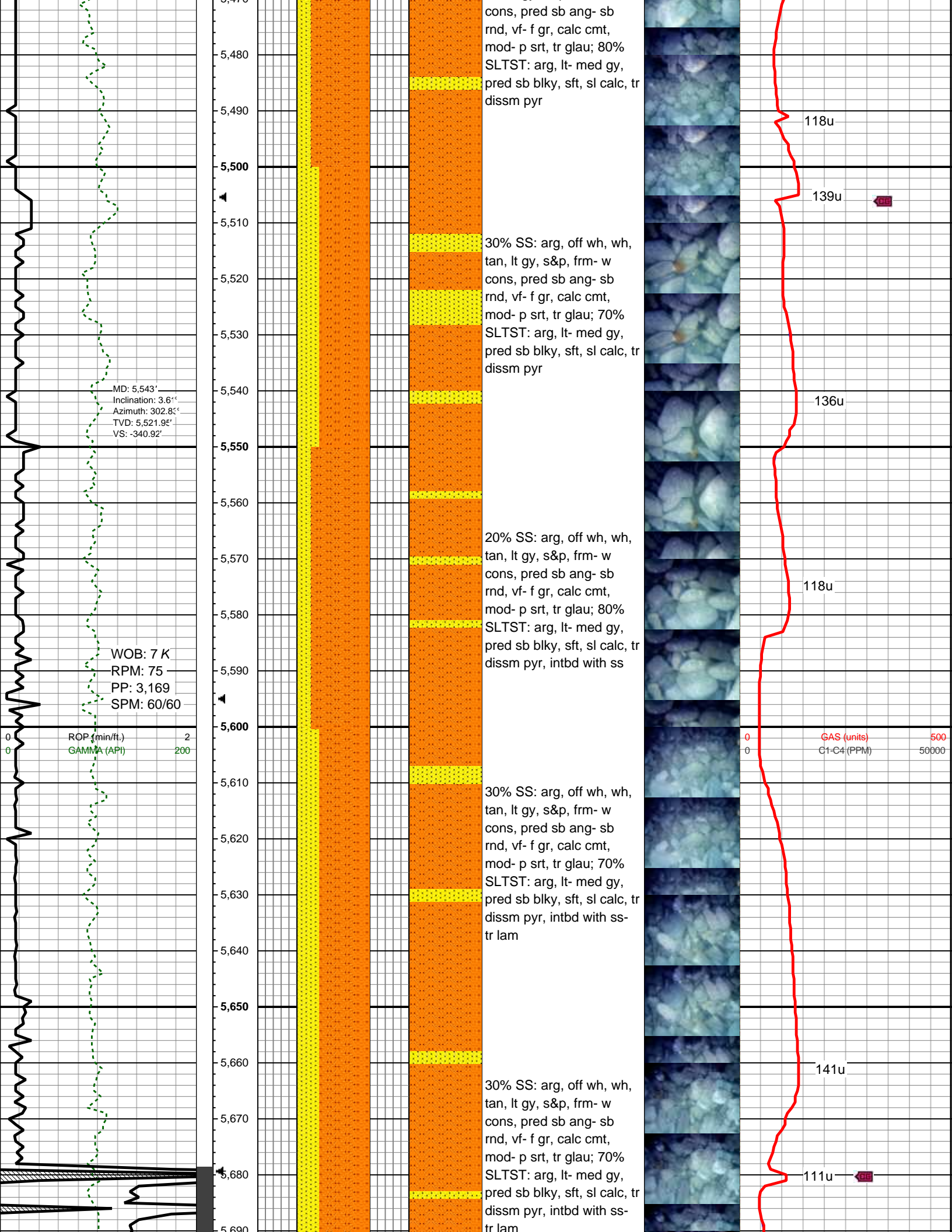


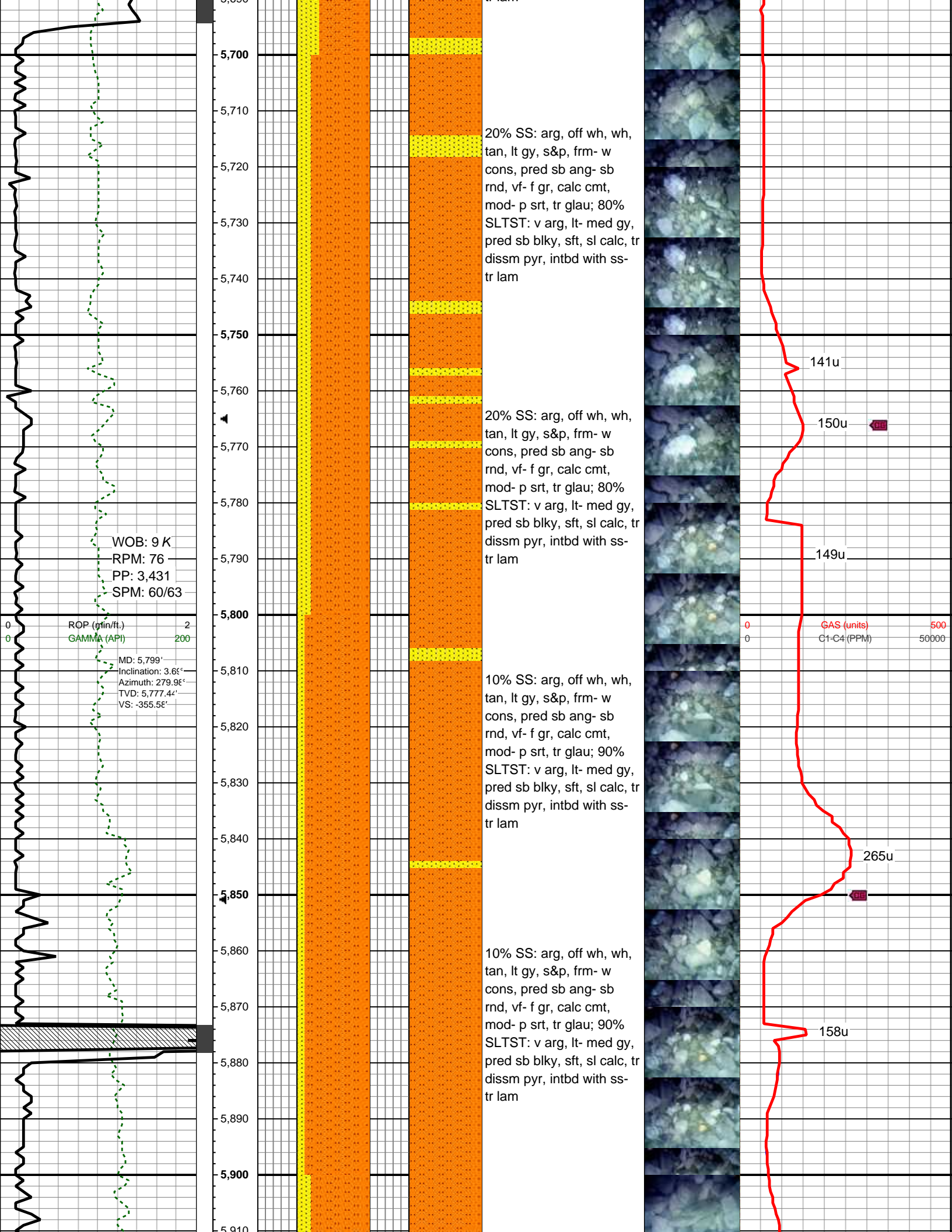


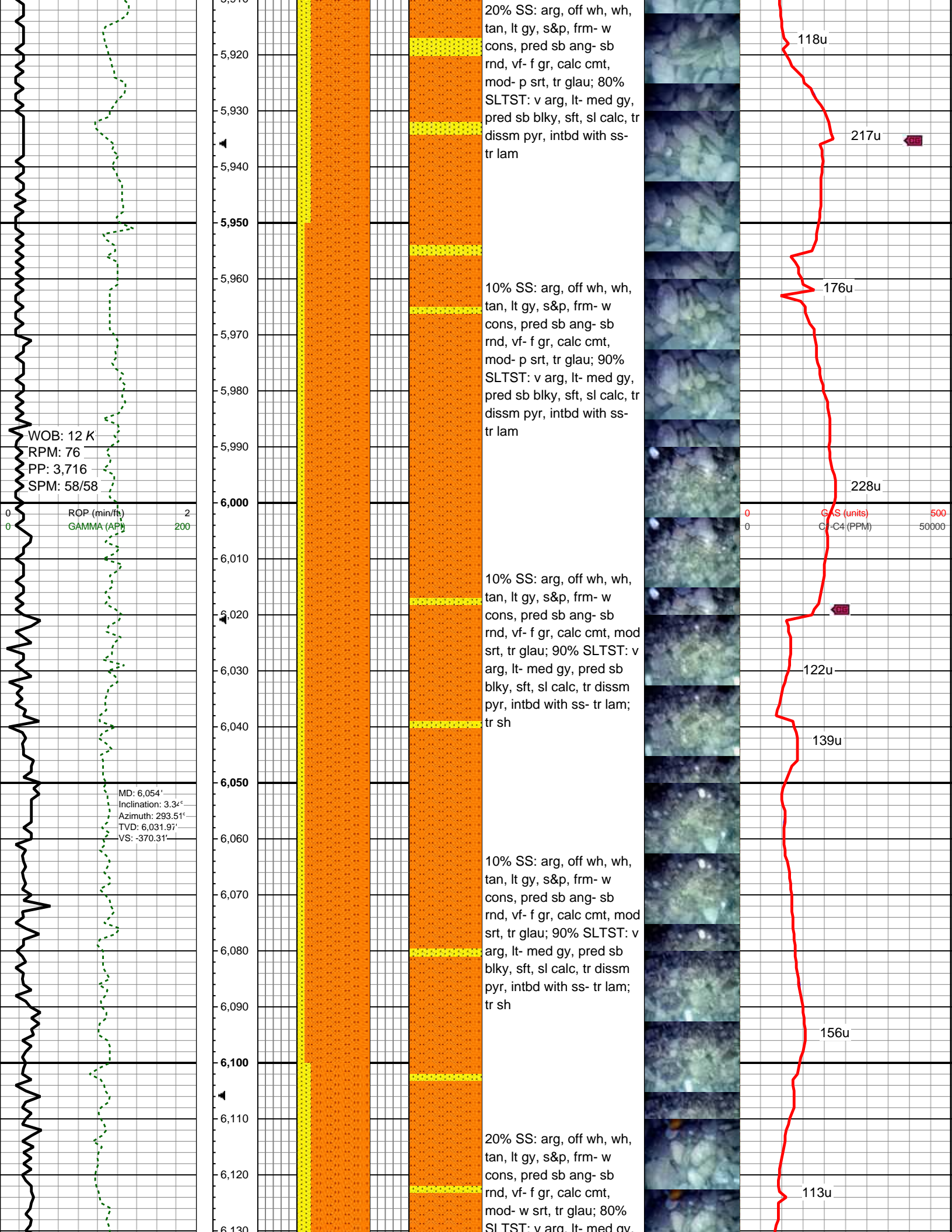


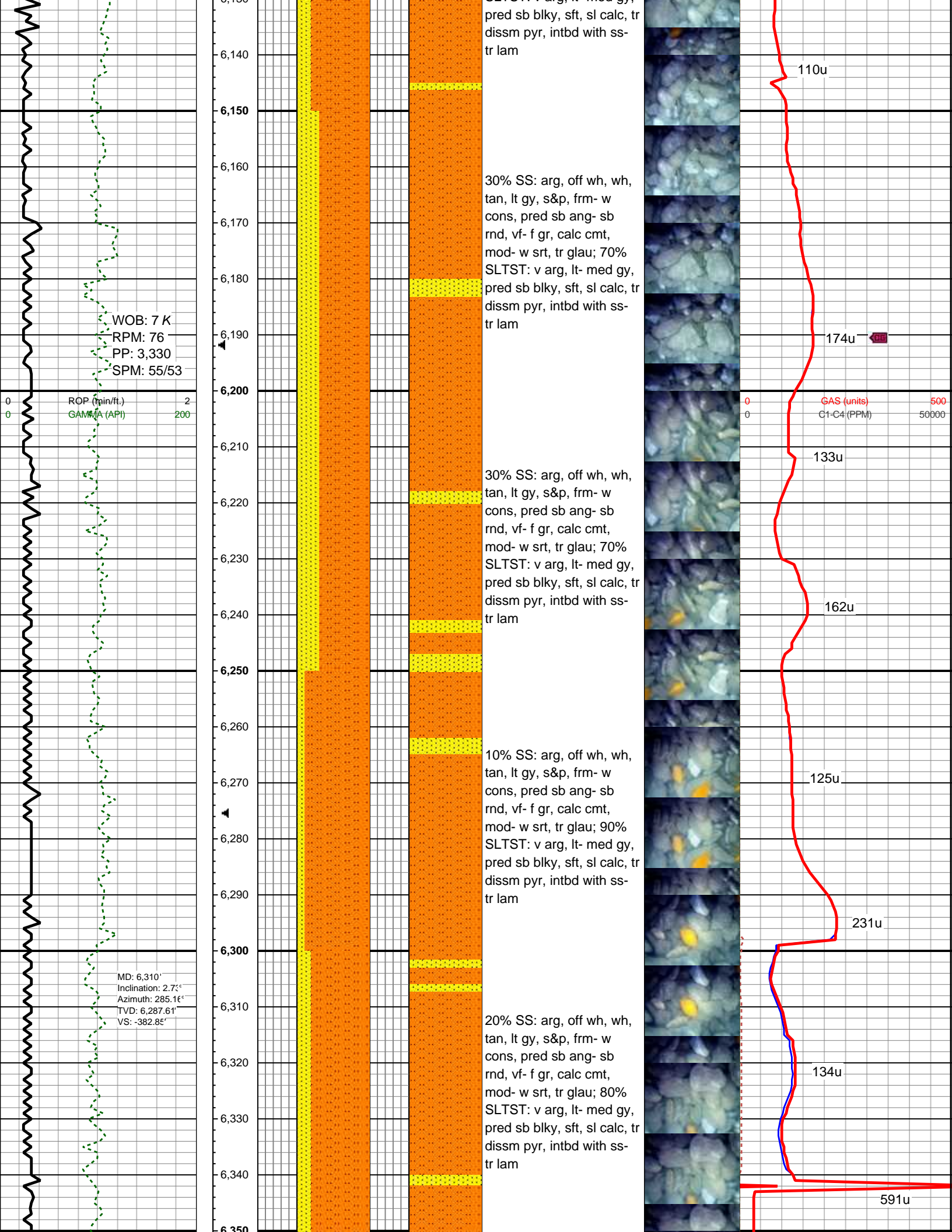


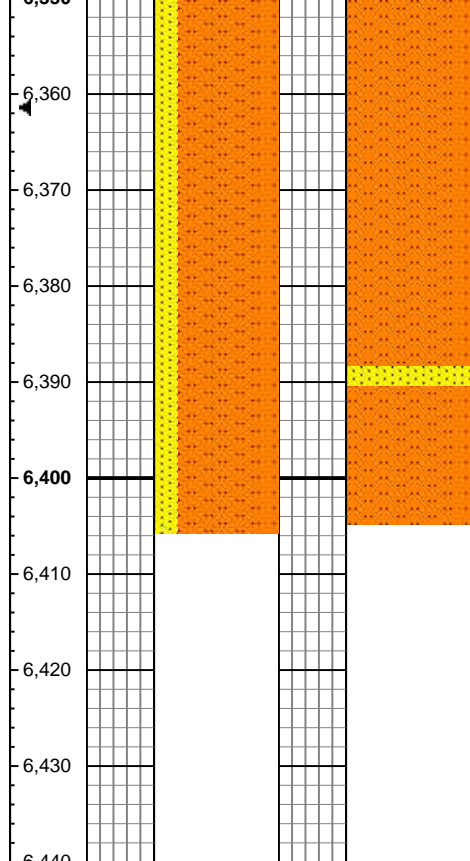
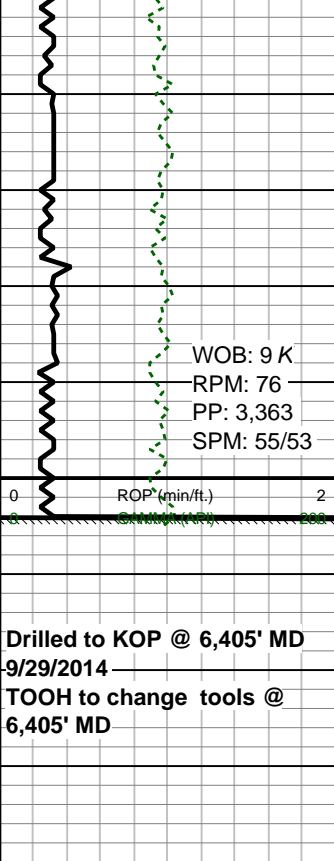












20% SS: arg, off wh, wh,
tan, lt gy, s&p, frm- w
cons, pred sb ang- sb
rnd, vf- f gr, calc cmt,
mod- w srt, tr glau; 80%
SLTST: v arg, lt- med gy,
pred sb blk, sft, sl calc, tr
dissm pyr, intbd with ss-
tr lam

Continue 2 manned
Logging Using Lateral
Mplot Version @ 6,405'
MD

