

1801 Broadway
Suite 500
Denver, Colorado 80202



Callie Fiddes
Regulatory Technician
Tel: 303.398.0550
E-mail: cfiddes@gwogco.com

October 6, 2014

Colorado Oil and Gas Conservation Commission
1120 Lincoln Street, Suite 801
Denver, Colorado 80203

RE: **Proposed Wellbore Spacing Unit**
Beierle KE 26-370HN

Niobrara New Drill
Township 1 North, Range 66 West, 6th P.M.
Section 26
Weld County, Colorado

Dear Director:

Great Western Operating Company, LLC is planning to drill the above captioned well in accordance with the provisions of COGCC Rule 318A.e.

Great Western proposed wellbore spacing unit consists of:

- **W2E2, E2W2 Sec 26**
- **320 acres**

The 30 day notification time period has passed and we have resolved any objections to such well locations or proposed spacing unit, therefore Great Western hereby requests the Director to approve the above mentioned well. Great Western Operating Company, LLC respectfully requests that the COGCC review the enclosed map illustrating the proposed wellbore spacing unit.

Respectfully,

Callie Fiddes

Callie Fiddes
Regulatory Technician
Great Western Operating Company, LLC

LEGEND:

- = 90° SYMBOL
- = PROPOSED WELLHEAD.
- ◇ = ENTRY POINT
- = TARGET BOTTOM HOLE.
- ▲ = SECTION CORNERS LOCATED.

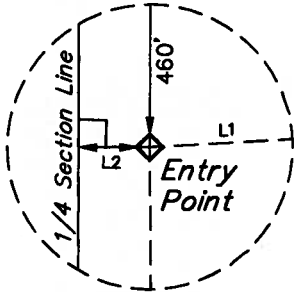
T1N, R66W, 6th P.M.

1997 Alum. Cap.
#13155, 0.5' Below
Ground in Center
of Road
Lat: 40.029558°
Long: 104.753875°

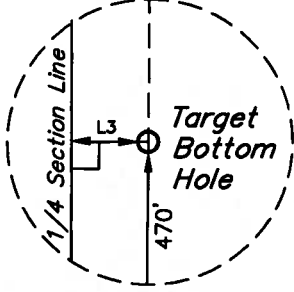
Alum. Cap. #12330,
0.4' Below Ground
in Center of Road
Lat: 40.029547°
Long: 104.744417°

2002 Alum. Cap.
#25636, 0.6' Below
Ground in Center
of Road
Lat: 40.029533°
Long: 104.734961°

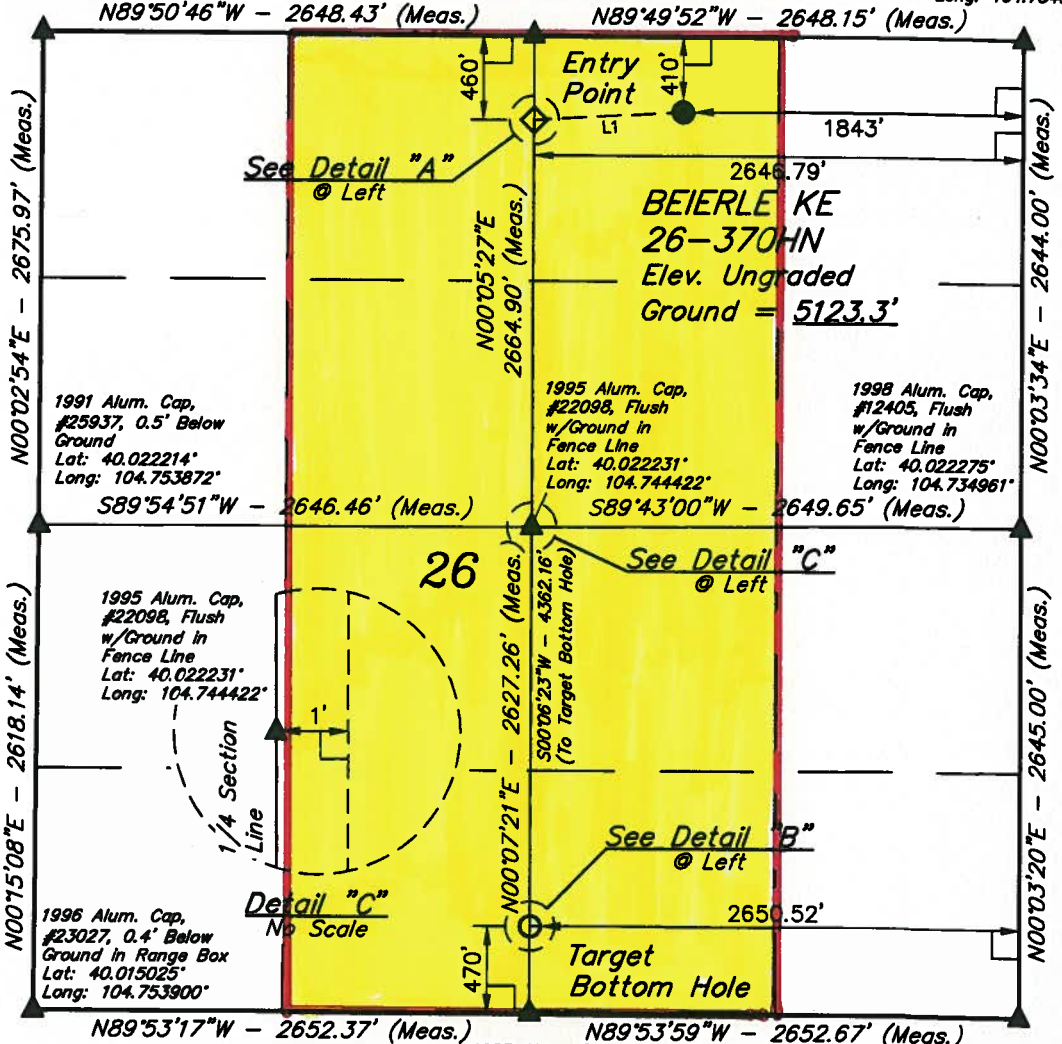
LINE TABLE		
LINE	DIRECTION	LENGTH
L1	S86°36'53"W	805.06'
L2	N89°54'33"W	1.60'
L3	N89°52'39"W	1.60'



Detail "A"
No Scale

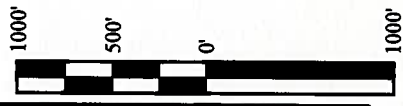


Detail "B"
No Scale



PDOP = 1.8

NAD 83 (TARGET BOTTOM HOLE)	
LATITUDE = 40°00'58.72" (40.016311)	
LONGITUDE = 104°44'39.93" (104.744425)	
NAD 27 (TARGET BOTTOM HOLE)	
LATITUDE = 40°00'58.78" (40.016325)	
LONGITUDE = 104°44'38.04" (104.743900)	
NAD 83 (ENTRY POINT)	NAD 83 (SURFACE LOCATION)
LATITUDE = 40°01'41.82" (40.028283)	LATITUDE = 40°01'42.30" (40.028417)
LONGITUDE = 104°44'39.88" (104.744411)	LONGITUDE = 104°44'29.55" (104.741542)
NAD 27 (ENTRY POINT)	NAD 27 (SURFACE LOCATION)
LATITUDE = 40°01'41.88" (40.028300)	LATITUDE = 40°01'42.36" (40.028433)
LONGITUDE = 104°44'37.99" (104.743886)	LONGITUDE = 104°44'27.66" (104.741017)



1995 Alum. Cap. #25937, 0.5' Below Ground in Fence Line
Lat: 40.022214°
Long: 104.753872°

1995 Alum. Cap. #22098, Flush w/Ground in Fence Line
Lat: 40.022231°
Long: 104.744422°

1996 Alum. Cap. #23027, 0.4' Below Ground in Range Box
Lat: 40.015025°
Long: 104.753900°

1998 Alum. Cap. #28856, 0.1' Below Ground in Range Box
Lat: 40.015019°
Long: 104.744431°

1984 Alum. Cap. 1.0' Below Ground
Lat: 40.015014°
Long: 104.734961°

CERTIFICATE

THIS IS TO CERTIFY THAT THE ABOVE PLAT WAS PREPARED FROM FIELD NOTES OF ACTUAL SURVEYS MADE BY ME OR UNDER MY SUPERVISION AND THAT THE SAME ARE TRUE AND CORRECT TO THE BEST OF MY KNOWLEDGE AND BELIEF.

Greg Weimer

REGISTERED LAND SURVEYOR
REGISTRATION NO 28285
STATE OF COLORADO
08-13-14

BASIS OF BEARINGS
BASIS OF BEARINGS IS A G.P.S. OBSERVATION

BASIS OF ELEVATION

HUBBS TRIANGULATION STATION LOCATED IN THE NE 1/4 OF SECTION 21, T1N, R64W, 6th P.M., TAKEN FROM THE KEENESBURG, QUADRANGLE, COLORADO, WELD COUNTY, 7.5 MINUTE QUAD (TOPOGRAPHIC MAP) PUBLISHED BY THE UNITED STATES DEPARTMENT OF THE INTERIOR, GEOLOGICAL SURVEY. SAID ELEVATION IS MARKED AS BEING 5168 FEET.

GREAT WESTERN OIL & GAS COMPANY

BEIERLE KE 26-370HN
NW 1/4 NE 1/4, SECTION 26, T1N, R66W, 6th P.M.
WELD COUNTY, COLORADO

SURVEYED BY: GREG WEIMER, C.J.	DATE: 08-13-14
DRAWN BY: J.W.	DATE DRAWN: 08-21-14
SCALE: 1" = 1000'	REVISED: 00-00-00

WELL LOCATION PLAT



UELS, LLC
Corporate Office * 85 South 200 East
Vernal, UT 84078 * (435) 789-1017

