

T1N, R66W, 6th P.M.

LEGEND:

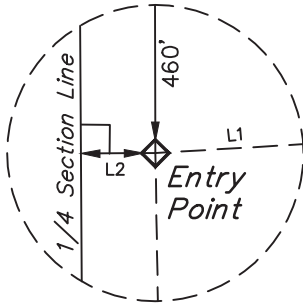
- = 90° SYMBOL
- = PROPOSED WELLHEAD.
- = ENTRY POINT
- = TARGET BOTTOM HOLE.
- = SECTION CORNERS LOCATED.

1997 Alum. Cap,
#13155, 0.5' Below
Ground in Center
of Road
Lat: 40.029558°
Long: 104.753875°

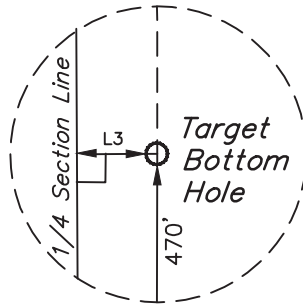
Alum. Cap, #12330,
0.4' Below Ground
in Center of Road
Lat: 40.029547°
Long: 104.744417°

2002 Alum. Cap,
#25636, 0.6' Below
Ground in Center
of Road
Lat: 40.029533°
Long: 104.734961°

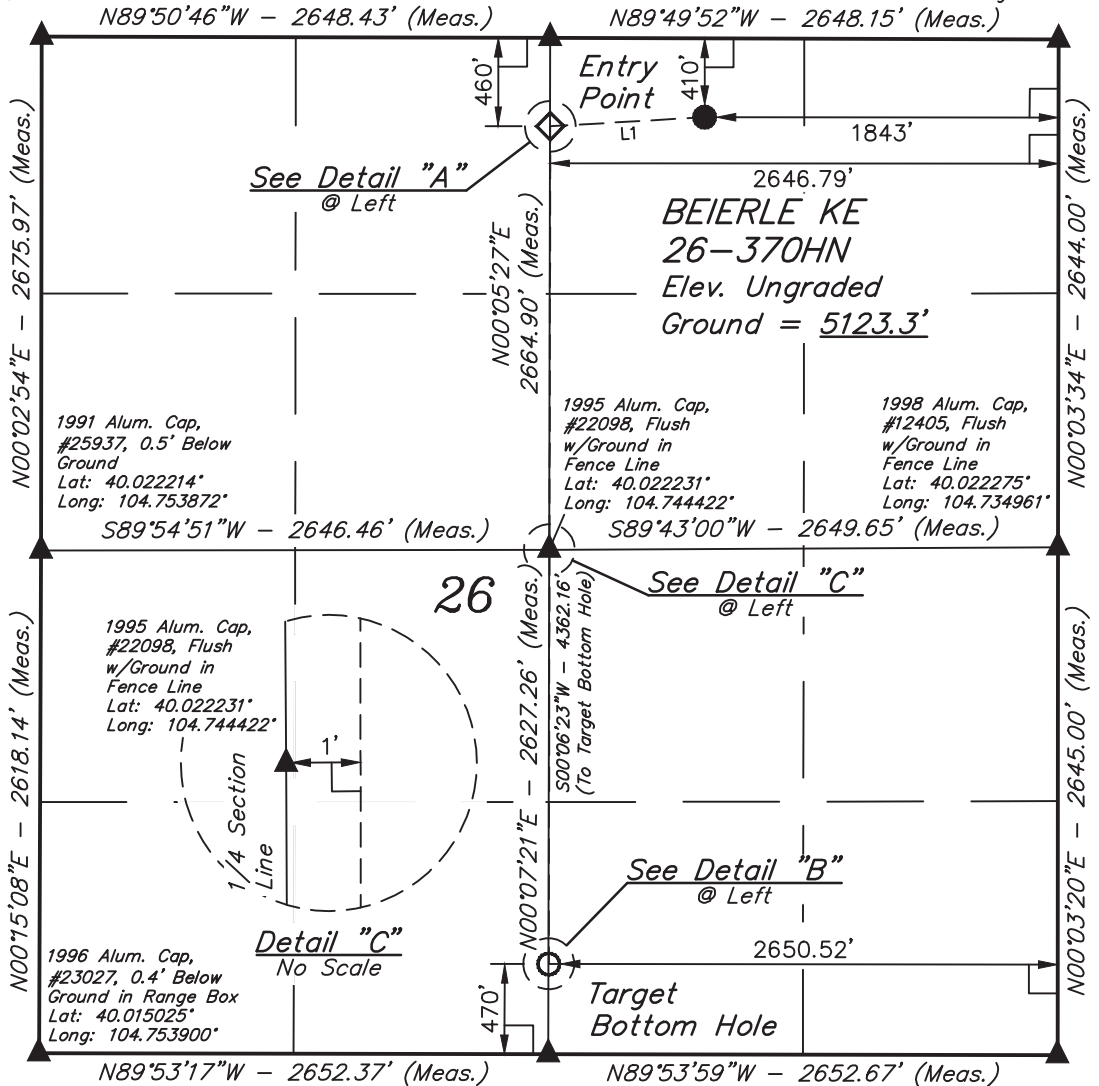
LINE TABLE		
LINE	DIRECTION	LENGTH
L1	S86°36'53"W	805.06'
L2	N89°54'33"W	1.60'
L3	N89°52'39"W	1.60'



Detail "A"
No Scale

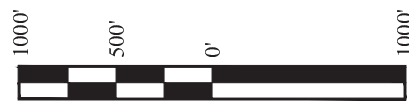


Detail "B"
No Scale



PDOP = 1.8

NAD 83 (TARGET BOTTOM HOLE)	
LATITUDE = 40°00'58.72" (40.016311)	
LONGITUDE = 104°44'39.93" (104.744425)	
NAD 27 (TARGET BOTTOM HOLE)	
LATITUDE = 40°00'58.78" (40.016325)	
LONGITUDE = 104°44'38.04" (104.743900)	
NAD 83 (ENTRY POINT)	NAD 83 (SURFACE LOCATION)
LATITUDE = 40°01'41.82" (40.028283)	LATITUDE = 40°01'42.30" (40.028417)
LONGITUDE = 104°44'39.88" (104.744411)	LONGITUDE = 104°44'29.55" (104.741542)
NAD 27 (ENTRY POINT)	NAD 27 (SURFACE LOCATION)
LATITUDE = 40°01'41.88" (40.028300)	LATITUDE = 40°01'42.36" (40.028433)
LONGITUDE = 104°44'37.99" (104.743886)	LONGITUDE = 104°44'27.66" (104.741017)



1995 Alum. Cap, #22098, Flush w/Ground in Fence Line
Lat: 40.022231°
Long: 104.744422°

1996 Alum. Cap, #23027, 0.4' Below Ground in Range Box
Lat: 40.015025°
Long: 104.753900°

1998 Alum. Cap, #28656, 0.1' Below Ground in Range Box
Lat: 40.015019°
Long: 104.744431°

1984 Alum. Cap, 1.0' Below Ground
Lat: 40.015014°
Long: 104.734961°



THIS IS TO CERTIFY THAT THE ABOVE PLAT WAS PREPARED FROM FIELD NOTES OF ACTUAL SURVEYS MADE BY ME OR UNDER MY SUPERVISION AND THAT THE SAME ARE TRUE AND CORRECT TO THE BEST OF MY KNOWLEDGE AND BELIEF.

BASIS OF BEARINGS
BASIS OF BEARINGS IS A G.P.S. OBSERVATION
BASIS OF ELEVATION

HUBBS TRIANGULATION STATION LOCATED IN THE NE 1/4 OF SECTION 21, T1N, R66W, 6th. P.M., TAKEN FROM THE KEENESBURG, QUADRANGLE, COLORADO, WELD COUNTY, 7.5 MINUTE QUAD (TOPOGRAPHIC MAP) PUBLISHED BY THE UNITED STATES DEPARTMENT OF THE INTERIOR, GEOLOGICAL SURVEY. SAID ELEVATION IS MARKED AS BEING 5168 FEET.

GREAT WESTERN OIL & GAS COMPANY

BEIERLE KE 26-370HN
NW 1/4 NE 1/4, SECTION 26, T1N, R66W, 6th P.M.
WELD COUNTY, COLORADO



UELS, LLC
Corporate Office * 85 South 200 East
Vernal, UT 84078 * (435) 789-1017

SURVEYED BY: GREG WEIMER, C.J.	DATE: 08-13-14
DRAWN BY: J.W.	DATE DRAWN: 08-21-14
SCALE: 1" = 1000'	REVISED: 00-00-00
WELL LOCATION PLAT	