



Empirica

Scale: 5" / 100'
Measured Depth Log

Well Name Nelson Farm1_Lat_Extraction.mplot

Location Sec.28-T07N-R67W

State CO

Country USA

API Number 05-123-39961-00

Region DJ Basin

Spud Date 8/27/2014

Surface Coordinates N 1,443,979.89'

E 3,164,958.28'

Lat 40°33'2.192" N

Long 104°54'23" W

Bottom Hole Coordinates X 885.34 N

Y -147.9 W

Ground Elevation 4975'

Logged Interval 6600'

Formation Codell

Type of Drilling Fluid Water based mud

County Weld

Rig Number Xtreme7

AFE # 14-201

Field Wattenberg

Drilling Completed 9/1/2014

K.B. Elevation 4991'

Company Extraction Oil & Gas
Address 1888 Sherman S
Denver, CO 80202

Name Hana Walidhauss
Company ALS Empirica
Address 6360 W Sam Houston
Suite 100
Houston, TX 77063

Logging start date:
Logging end date:
2 man logging service



Operator

Gas

003 Suite 500

Geologist

erova & Edward Knight

uston Pkwy N

041

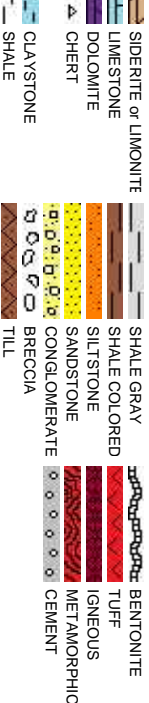
Other

8/29/2014

9/1/14

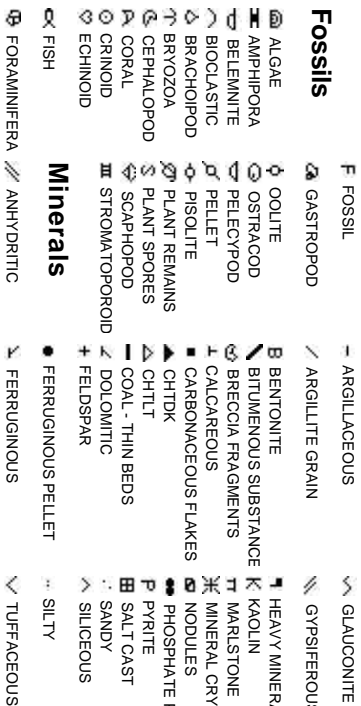
ML-131

Rock Types



Accessories

Fossils



Stringer



Other Symbols

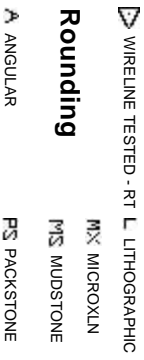
Oil Show



Engineering



Rounding



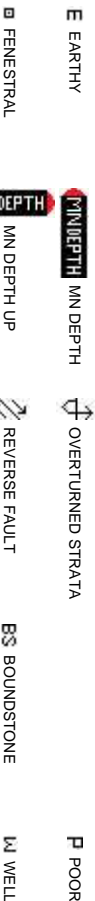
Sorting

M MODERATE

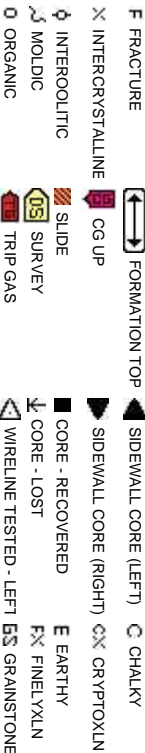
Porosity

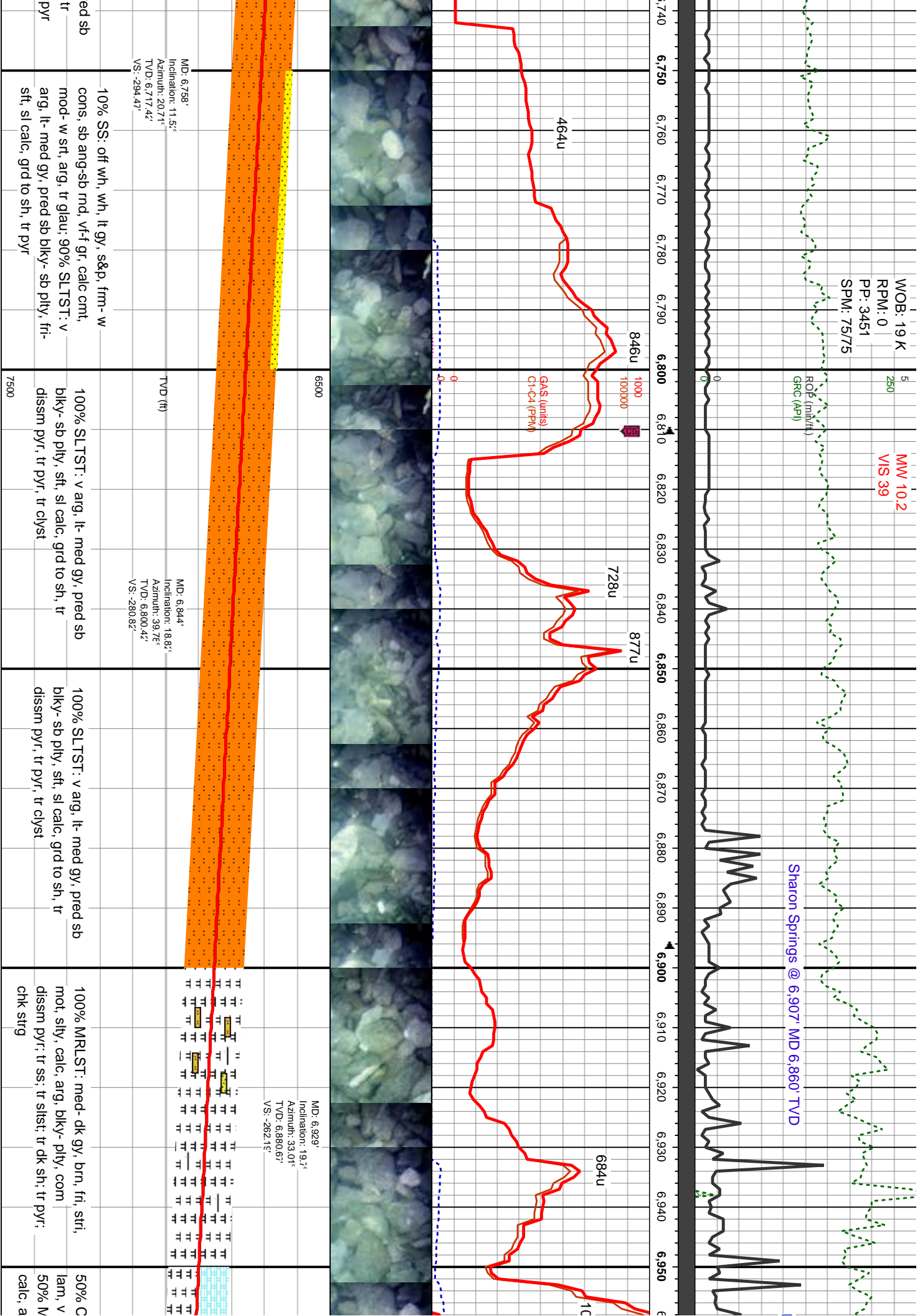


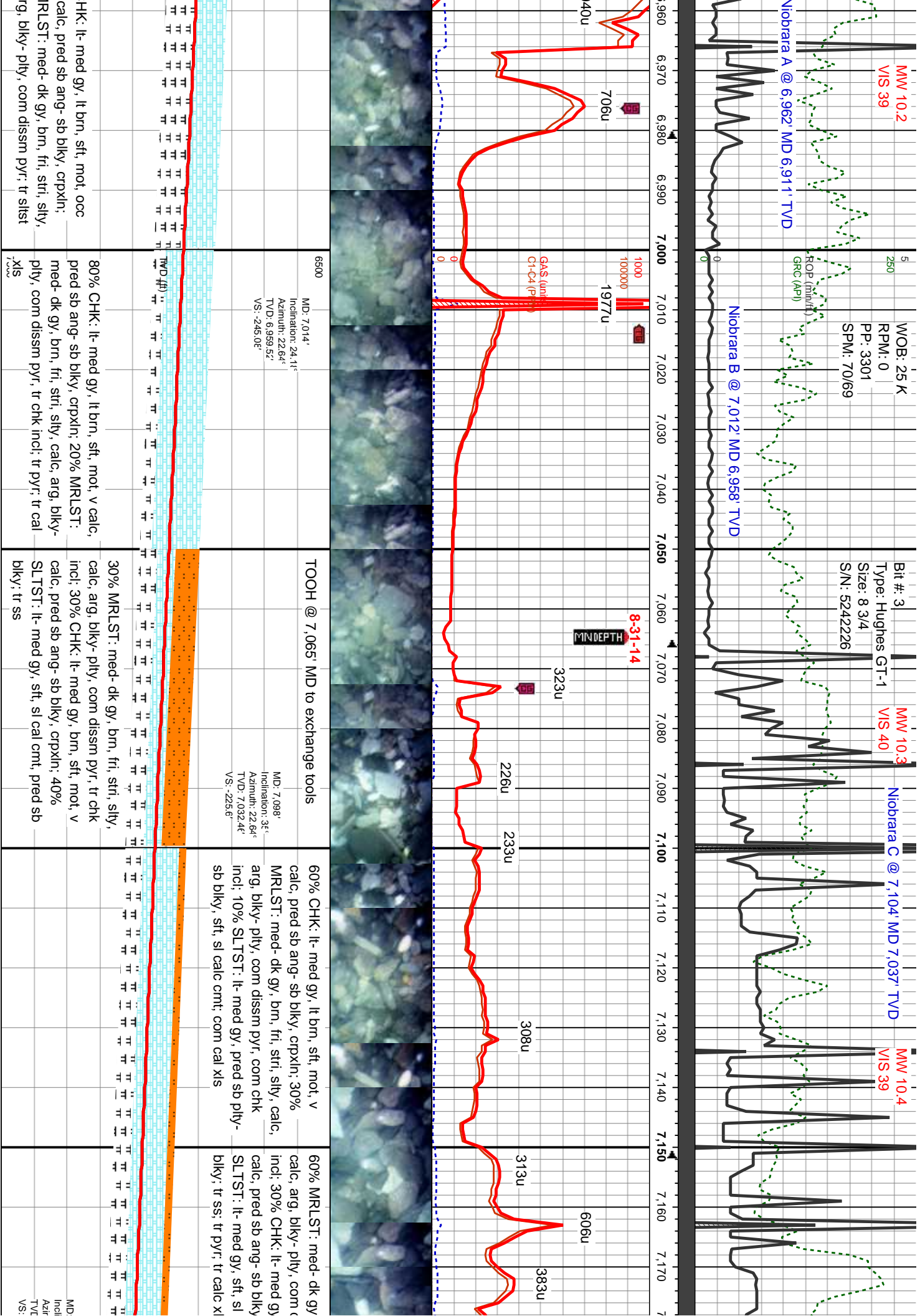
Textures

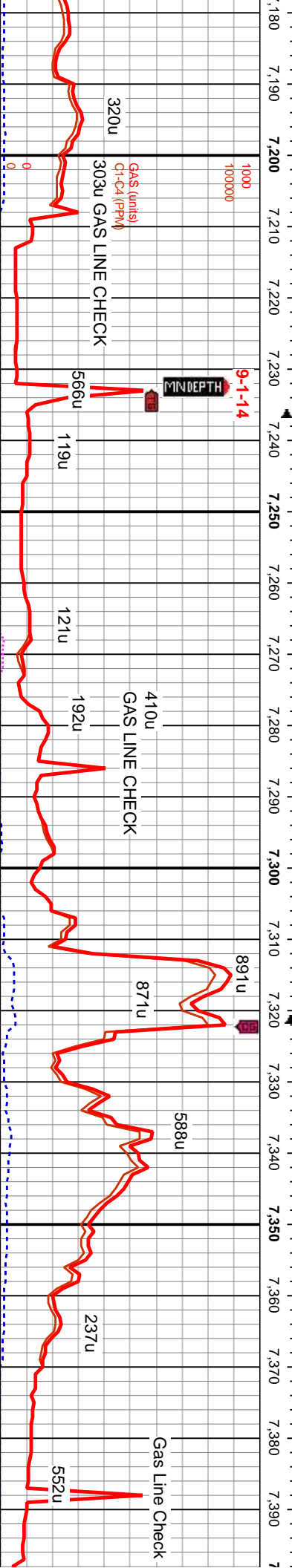
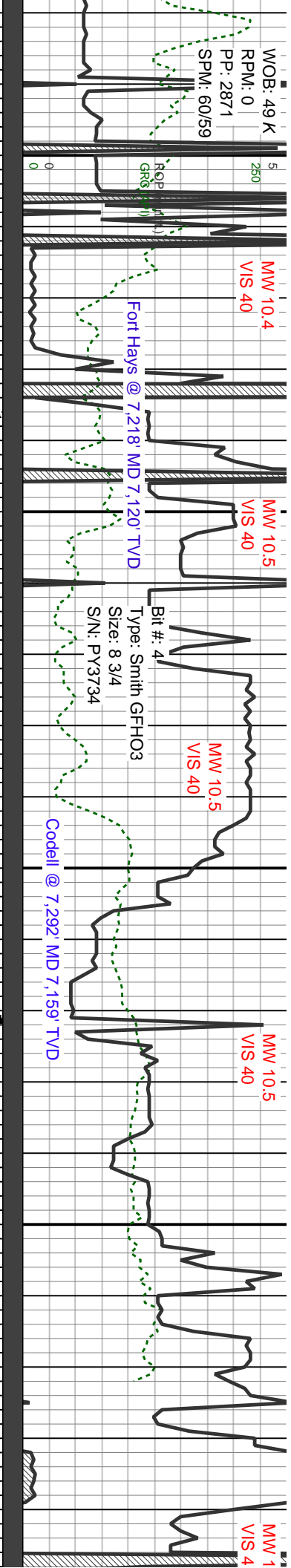


SILTY SHALE









| | | | | | | |
|--|--|--|---|---|--|--|
| brn, fri, stri, silty, dissm pyr, tr chk , brn, sft, mot, v s, cpplxln: 10% cal cmt, pred sb | 30% MRLST: med- dk gy, brn, frm, stri, silty, calc, arg, blk- ply, com dissm pyr; chk incl: 30% CHK: lt-30% SLTST: lt- med med gy, brn, sft, mot, gy, sft, sl cal cmt, pred v calc, pred sb ang- sb blk; 40% LS: pred sb blk; cpplxln: 30% SLTST: lt- med gy, sft, microxln, fri- frm, brit, sl cal cmt, pred sb blk; 10% LS: wht, off pyr; tr chk; tr calc xls | 30% MRLST: med- gy, brn, frm- hd, stri, silty, calc, arg, blk- ply, com dissm pyr; 20% SLTST: lt- med gy, sft, sl cal cmt, pred sb blk; 60% LS: pred wht, off mky wht, pred lt- med brn, microxln, frm, brit, dns, pkst, ss strg; tr pyr; tr chk; tr calc xls | 20% MRLST: med- dk gy, brn, frm- hd, stri, silty, calc, arg, blk- ply, com dissm pyr; 10% SLTST: lt- med gy, sft, sl cal cmt, pred sb blk; 80% LS: pred wht, off mky wht, pred lt- med brn, microxln, frm, brit, dns, pkst; ss strg; tr pyr; tr chk; tr calc xls | 20% MRLST: med- dk gy, brn, frm- hd, stri, silty, calc, arg, blk- ply, com dissm pyr; 30% SLTST: lt- med gy, sft, sl cal cmt, pred sb blk; 30% LS: pred wht, off mky wht, pred lt- med brn, microxln, frm, brit, dns, pkst; 20% SS: lt- dk gy, fri- mod cons, pred sb ang grn, vf- f gm, mod- w srt, tr glau in lt ss; tr pyr; tr calc xls | 20% MRLST: med- dk gy, brn, frm- hd, stri, silty, calc, arg, blk- ply, com dissm pyr; 20% SLTST: lt- med gy, sft, sl cal cmt, pred sb blk; 20% LS: pred wht, off mky wht, pred lt- med brn, microxln, frm, brit, dns, pkst; 40% SS: lt- dk gy, fri- mod cons, pred sb ang grn, vf- f gm, mod- w srt, tr glau in lt ss; tr pyr; tr calc xls | 20% MRLST: med- dk gy, brn, frm- hd, stri, silty, calc, arg, blk- ply, com dissm pyr; 30% SLTST: lt- med gy, sft, sl cal cmt, pred sb blk; 10% LS: pred wht, off mky wht, pred lt- med brn, microxln, frm, brit, dns, pkst; 30% SS: lt- dk gy, fri- mod cons, pred sb ang grn, vf- f gm, mod- w srt, tr glau in lt ss; tr pyr; tr calc xls |
| 7,183' Inclination: 46.01° Azimuth: 25.37° TVD: 7,096.9ft -198.37' | 7,183' Inclination: 46.01° Azimuth: 25.37° TVD: 7,096.9ft -198.37' | MD: 7,269' Inclination: 60.4° Azimuth: 34.1° TVD: 7,148.3ft VS: -158.43' | MD: 7,269' Inclination: 60.4° Azimuth: 34.1° TVD: 7,148.3ft VS: -158.43' | MD: 7,269' Inclination: 60.4° Azimuth: 34.1° TVD: 7,148.3ft VS: -158.43' | MD: 7,269' Inclination: 60.4° Azimuth: 34.1° TVD: 7,148.3ft VS: -158.43' | MD: 7,269' Inclination: 60.4° Azimuth: 34.1° TVD: 7,148.3ft VS: -158.43' |
| TOOH to replace the tools @ 7,232' MD | TOOH to replace the tools @ 7,232' MD | | | | | |

