

**RADIAL CEMENT BOND
GAMMA RAY
CCL**

Company	KERR MCGEE OIL AND GAS	Company	KERR MCGEE OIL AND GAS
Well	CAMP H 30-29D	Well	CAMP H 30-29D
Field	WATTENBERG	Field	WATTENBERG
County	WELD	County	WELD
State	CO	State	CO

Location:	API # : 05-123-31414	Other Services
	NW/SW	
	LAT: 40.20820 LONG: -104.71230	
	SEC 19 TWP 3N RGE 65W	
Permanent Datum	GL	Elevation 4990'
Log Measured From	KB 15'	K.B. 5005'
Drilling Measured From	KB	D.F. 5004'
		G.L. 4990'

Date	11-26-2014
Run Number	ONE
Depth Driller	8315'
Depth Logger	1794'
Bottom Logged Interval	1784'
Top Log Interval	SURFACE
Open Hole Size	7.875
Type Fluid	WATER
Density / Viscosity	1.0
Max. Recorded Temp.	99
Estimated Cement Top	187'
Time Well Ready	N/A
Time Logger on Bottom	N/A
Equipment Number	4310
Location	GREILEY
Recorded By	N. POLLOCK
Witnessed By	M. VANDEGRIFE

Borehole Record		Tubing Record				
Run Number	Bit From	To	Size	Weight	From	To
ONE	12.25"	SURFACE	735'			
TWO	7.88"	735'	8315'			

Casing Record		Surface String		Production String	
Record	Size	Wgt/Ft	Top	Bottom	
Surface String	8.62	24#	SURFACE	725'	
Production String	4.5	11.6#	SURFACE	8305'	

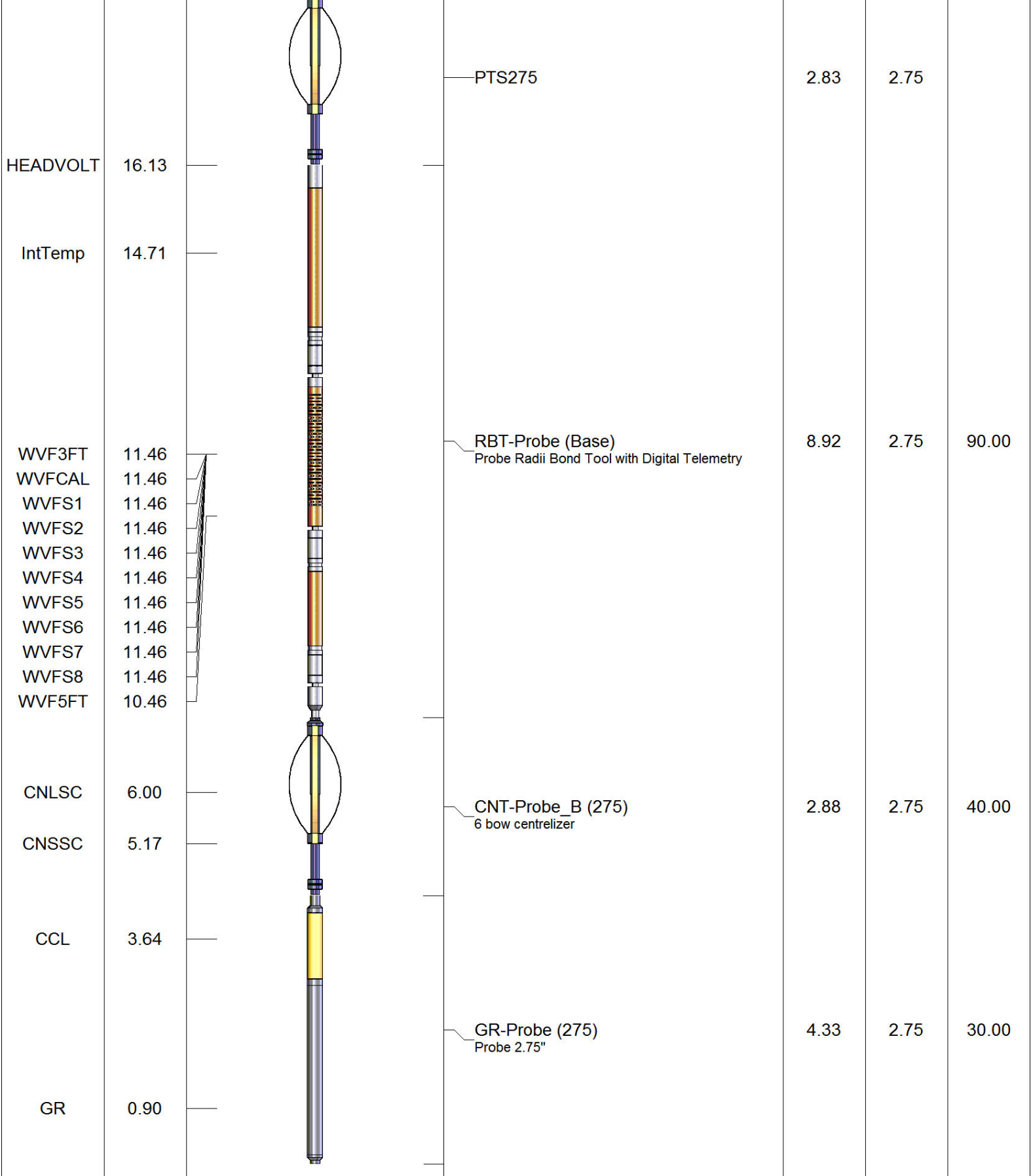
<<< Fold Here >>>

All interpretations are opinions based on inferences from electrical or other measurements and we cannot and do not guarantee the accuracy or correctness of any interpretation, and we shall not, except in the case of gross or willful negligence on our part, be liable or responsible for any loss, costs, damages, or expenses incurred or sustained by anyone resulting from any interpretation made by any of our officers, agents or employees. These interpretations are also subject to our general terms and conditions set out in our current Price Schedule.

Comments

RAN CBL TO VERIFY CEMENT BOND
THANK YOU FOR USING WARRIOR !!!!!!!

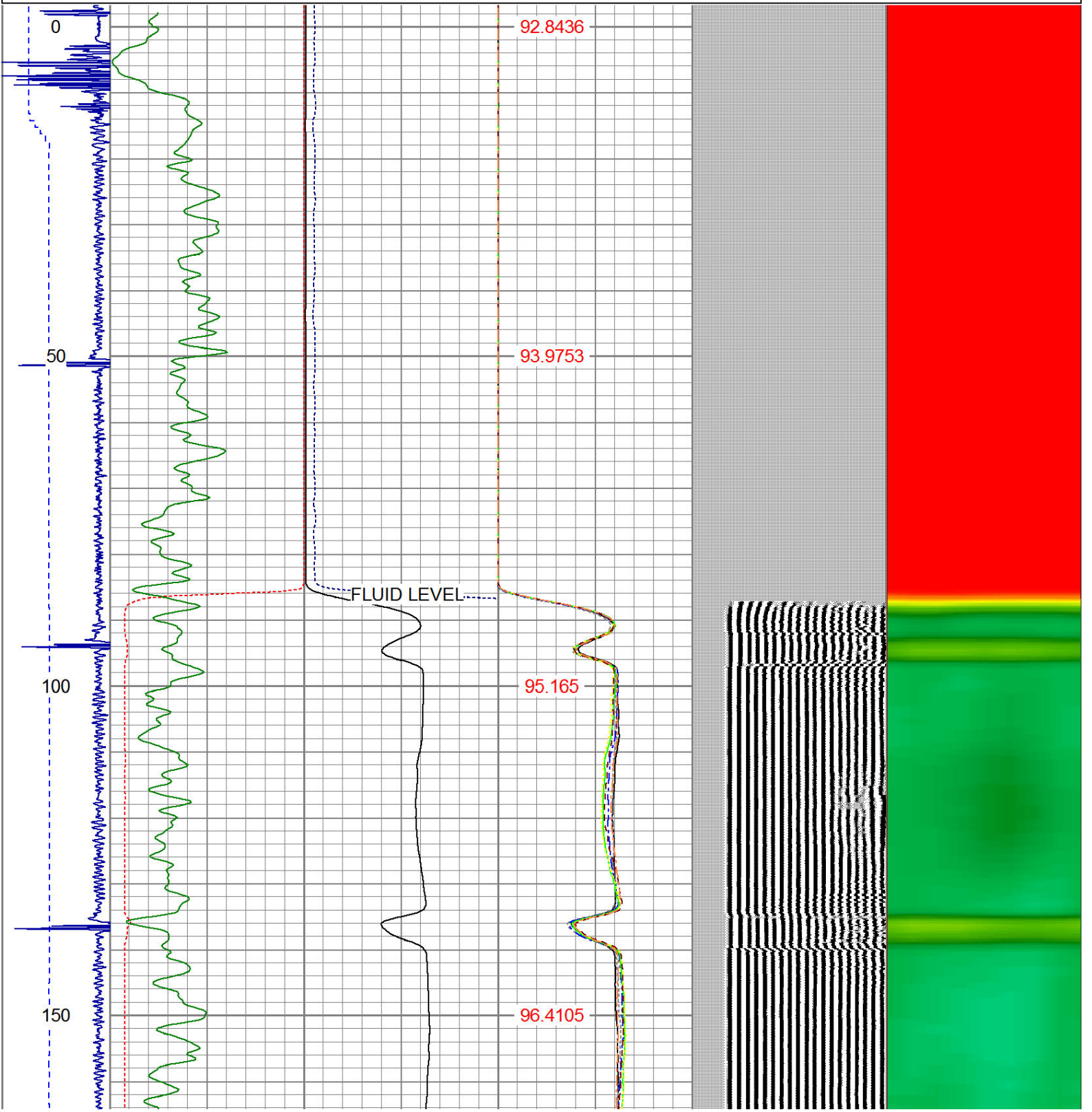
Sensor	Offset (ft)	Schematic	Description	Len (ft)	OD (in)	Wt (lb)
				1.00	1.36	5.00

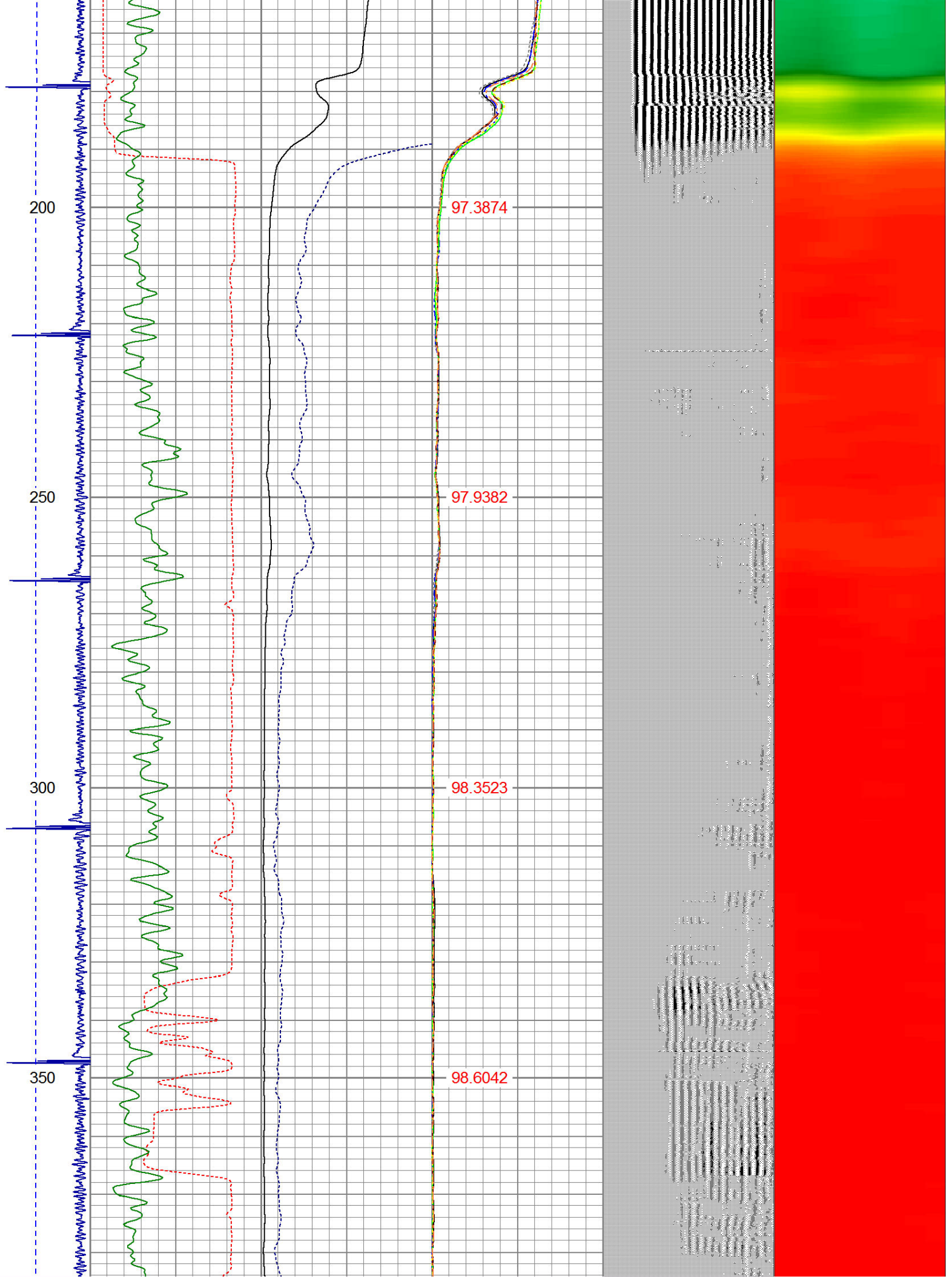


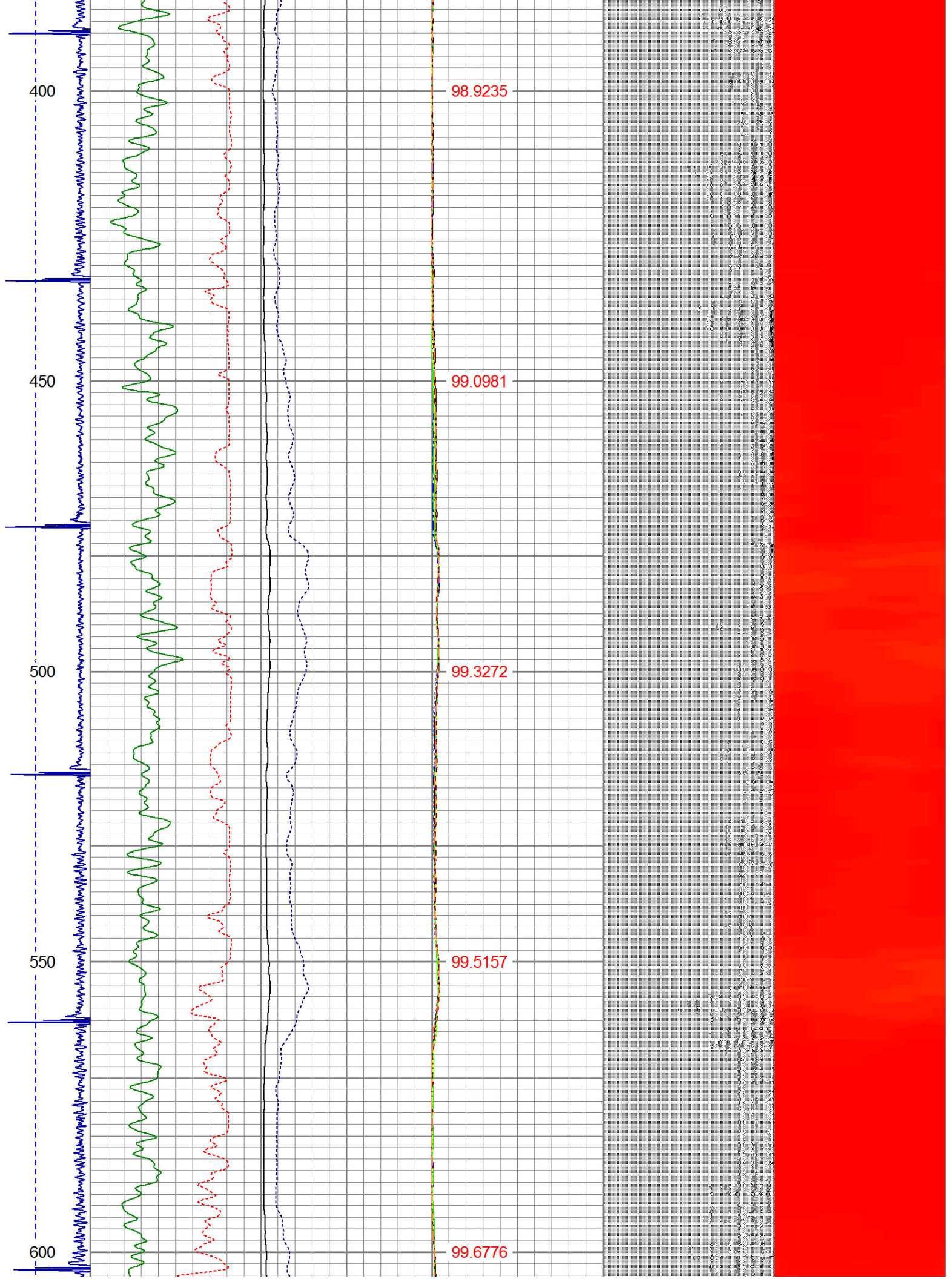
Dataset: camp h 30-29d.db: field/well/run1/pass2
 Total Length: 19.96 ft
 Total Weight: 165.00 lb
 O.D.: 2.75 in

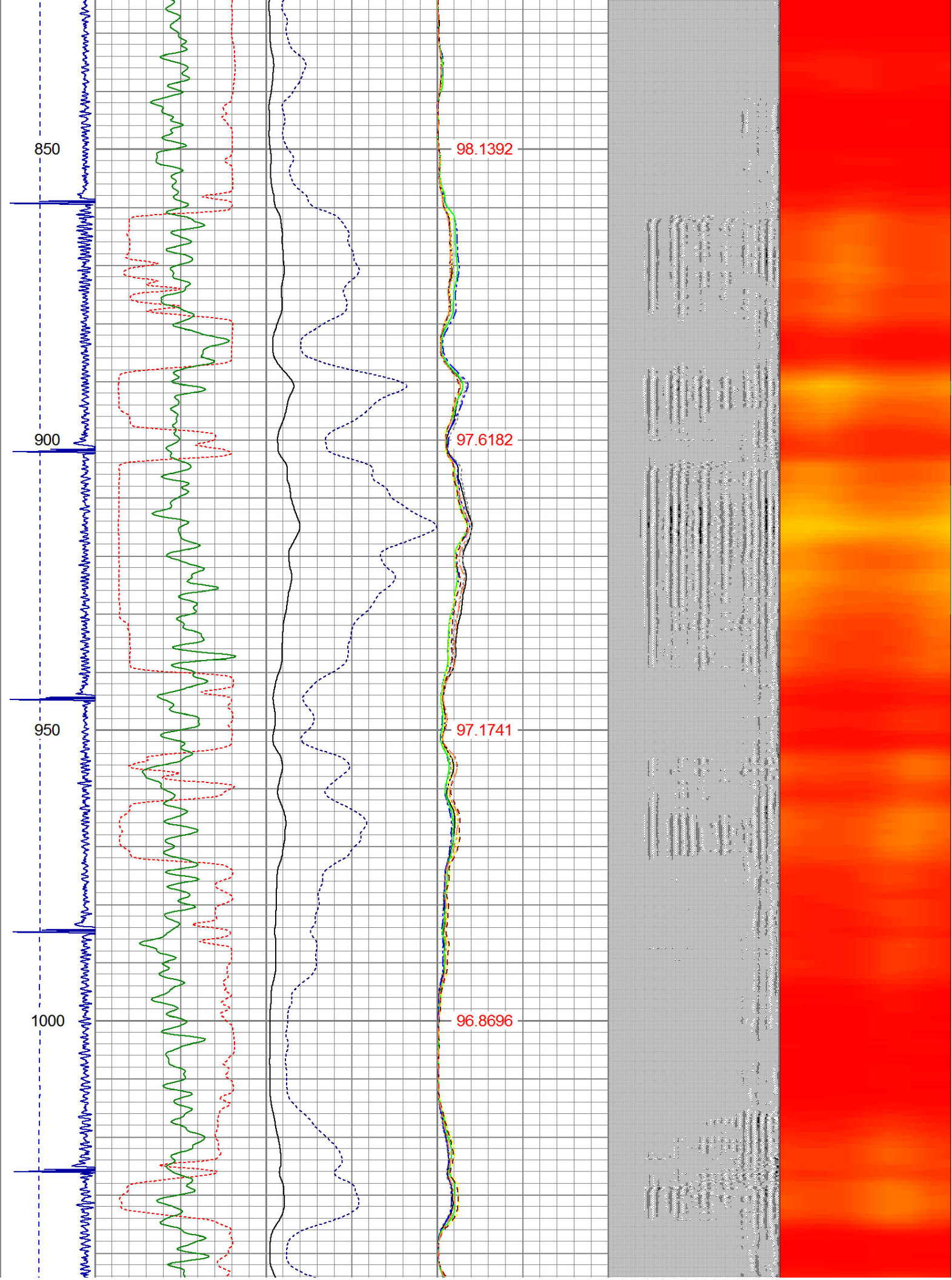
Database File: camp h 30-29d.db
 Dataset Pathname: pass2
 Presentation Format: ips_rbt

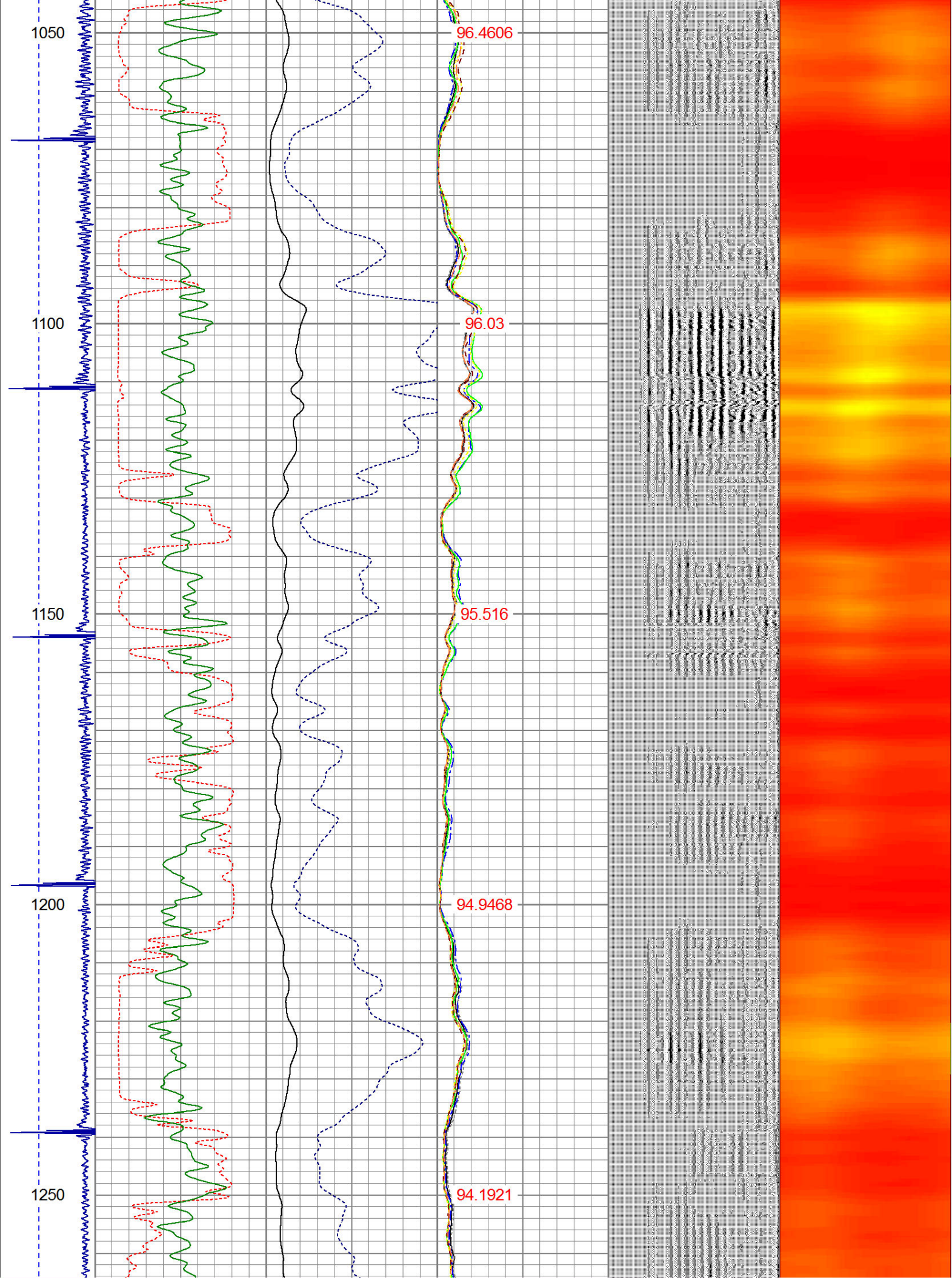
-9	CCL	1	200	TT (usec)	1000	0	AMP (mV)	100	0	AMPS1	100	200	VDL	1200	1	Cement Map	8
	LSPD		0	GR (GAPI)	200	0	AMPx5 (mV)	20	0	AMPS2	100				1		100
	(ft/min)		200	GR (GAPI)	400				0	AMPS4	100						
0		250							0	AMPS5	100						
									0	AMPS6	100						
									0	AMPS7	100						
									0	AMPS8	100						
										IntTemp							
										(degF)							

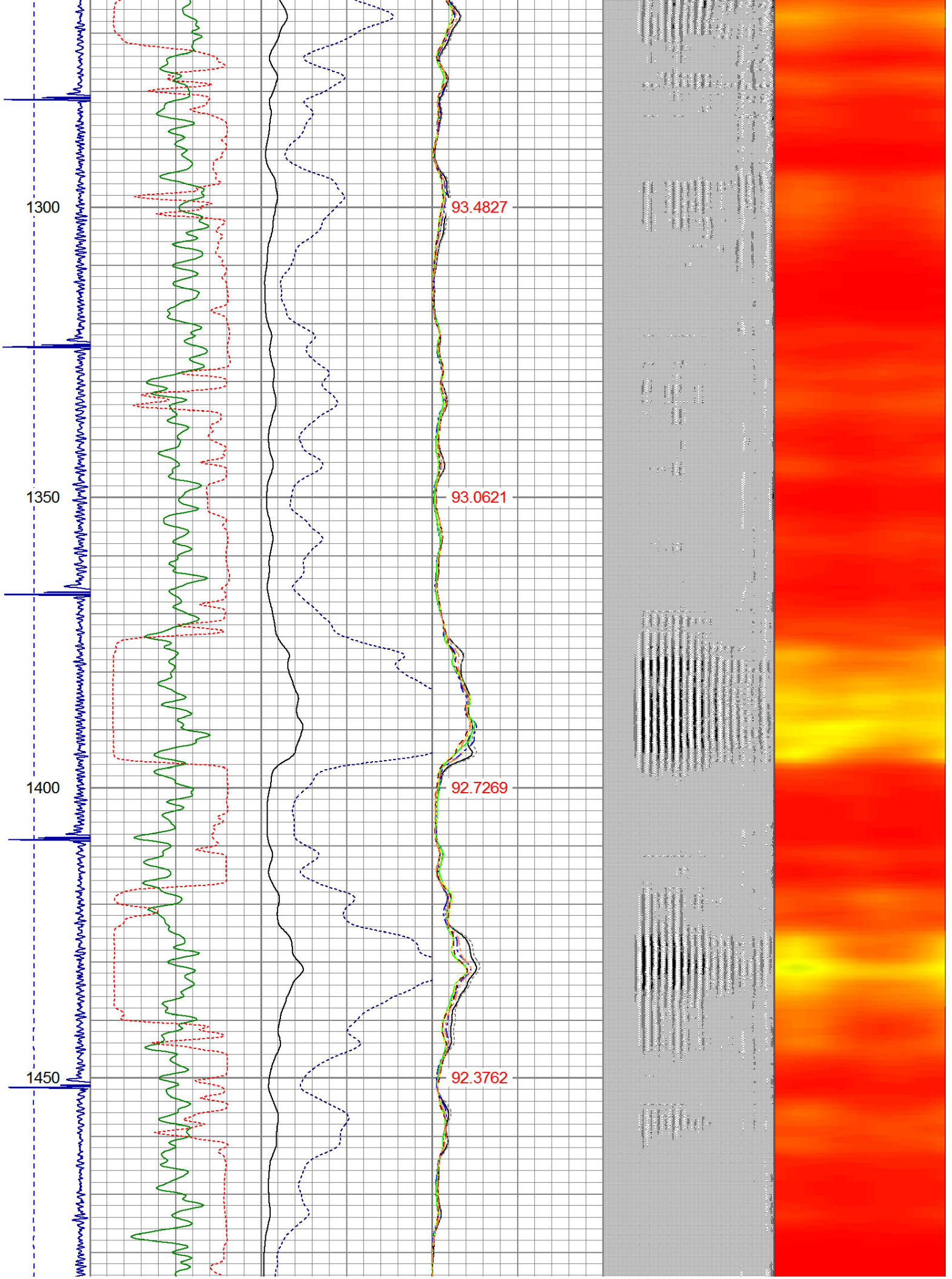


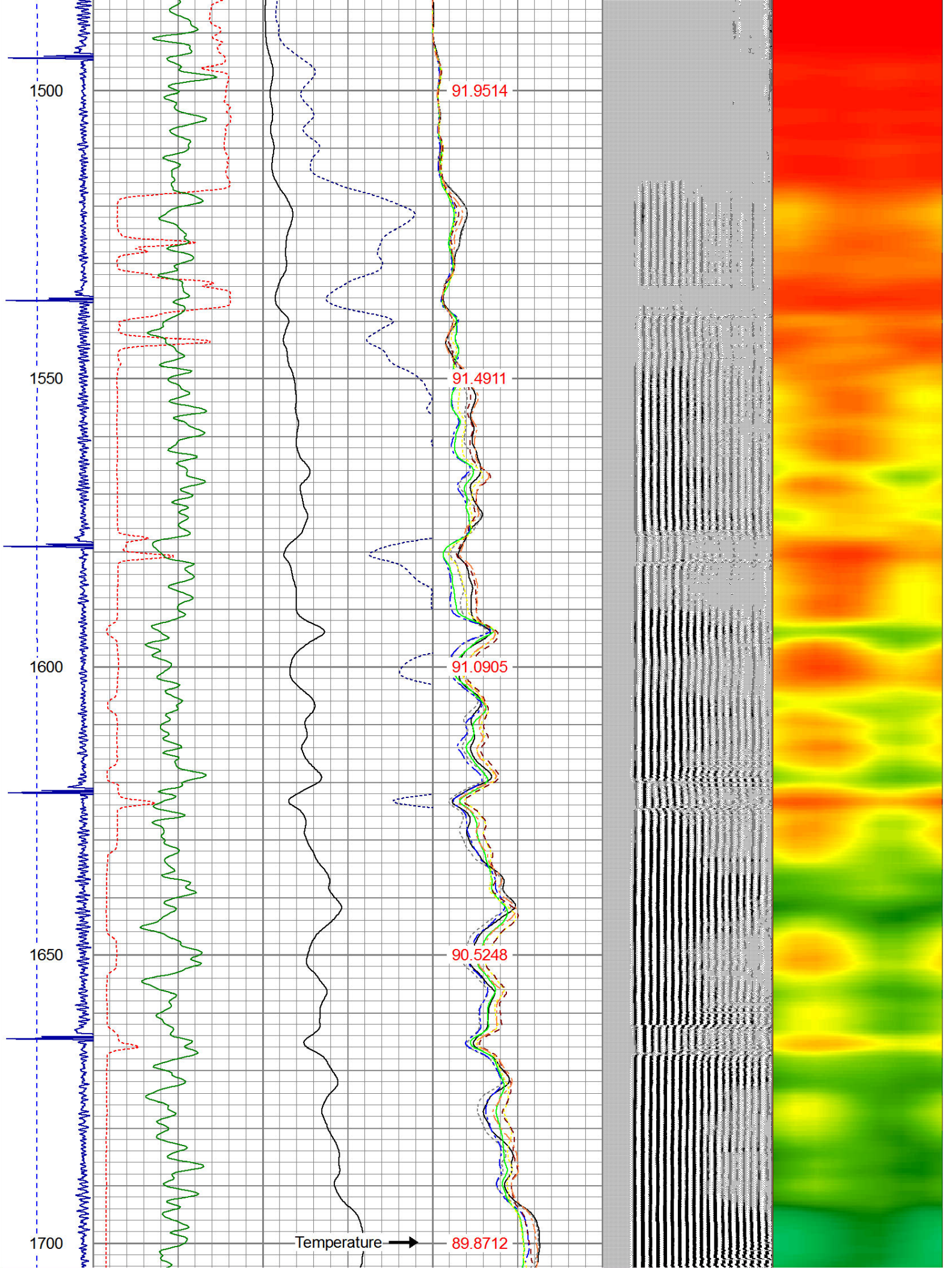


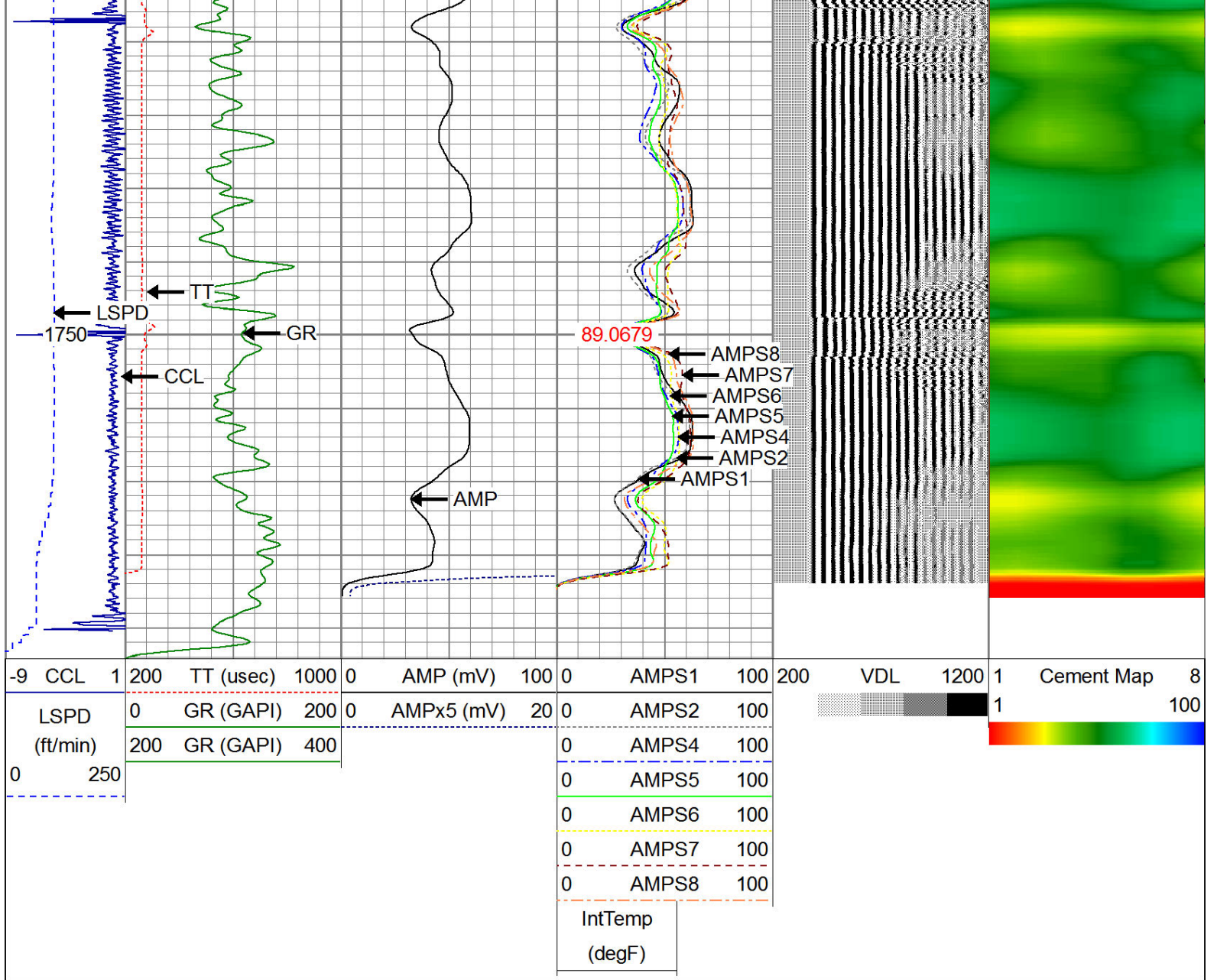












WARRIOR
ENERGY SERVICES

Company KERR McGEE OIL AND GAS
 Well CAMP H 30-29D
 Field WATTENBERG
 County WELD
 State CO