

Location

SHL - C-102 PKG

BHL -C-102 PKG

GL - C-102 PKG

Offsets

Well Name

Southern Ute #9 (Samson)

Southern Ute #701

Southern Ute 1X

SHL

Surveyer

Surveyer

Surveyer

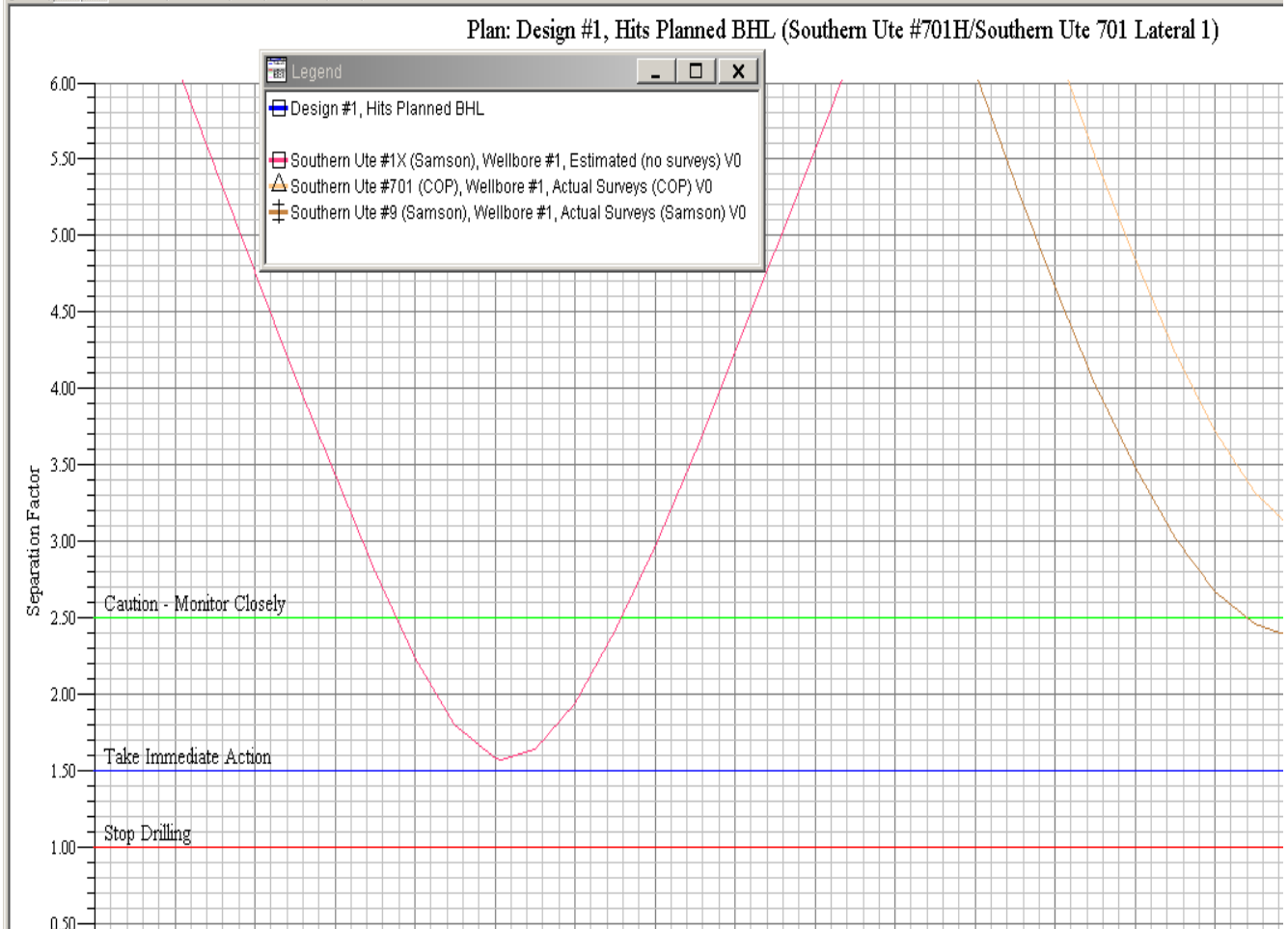
Wellhead Elevation

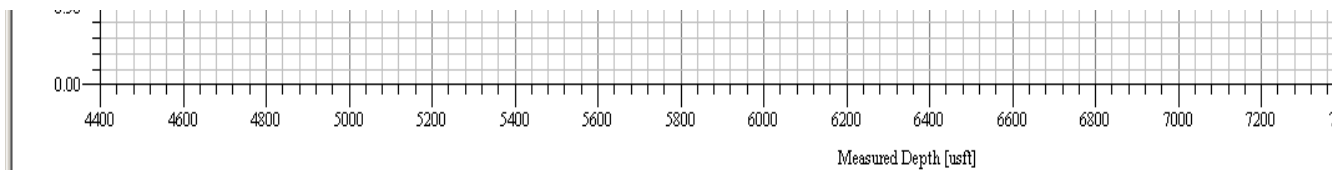
Surveyer

Surveyer

Surveyer

	MD (usft)	CL (usft)	Inc (°)	Azi (°)	TVD (usft)	NS (usft)
1	0.0		0.00	0.00	0.0	
2	1090.1	1090.1	0.00	0.00	1090.1	
3	4090.1	3000.0	90.00	65.77	3000.0	
4	4193.6	103.5	90.00	65.77	3000.0	
5	4598.7	405.1	90.00	77.92	3000.0	
6	6141.7	1543.0	90.00	77.92	3000.0	
7	7505.8	1364.1	90.00	64.28	3000.0	
8	8620.0	1114.3	90.00	64.28	3000.0	
9						





Summary

Site Name

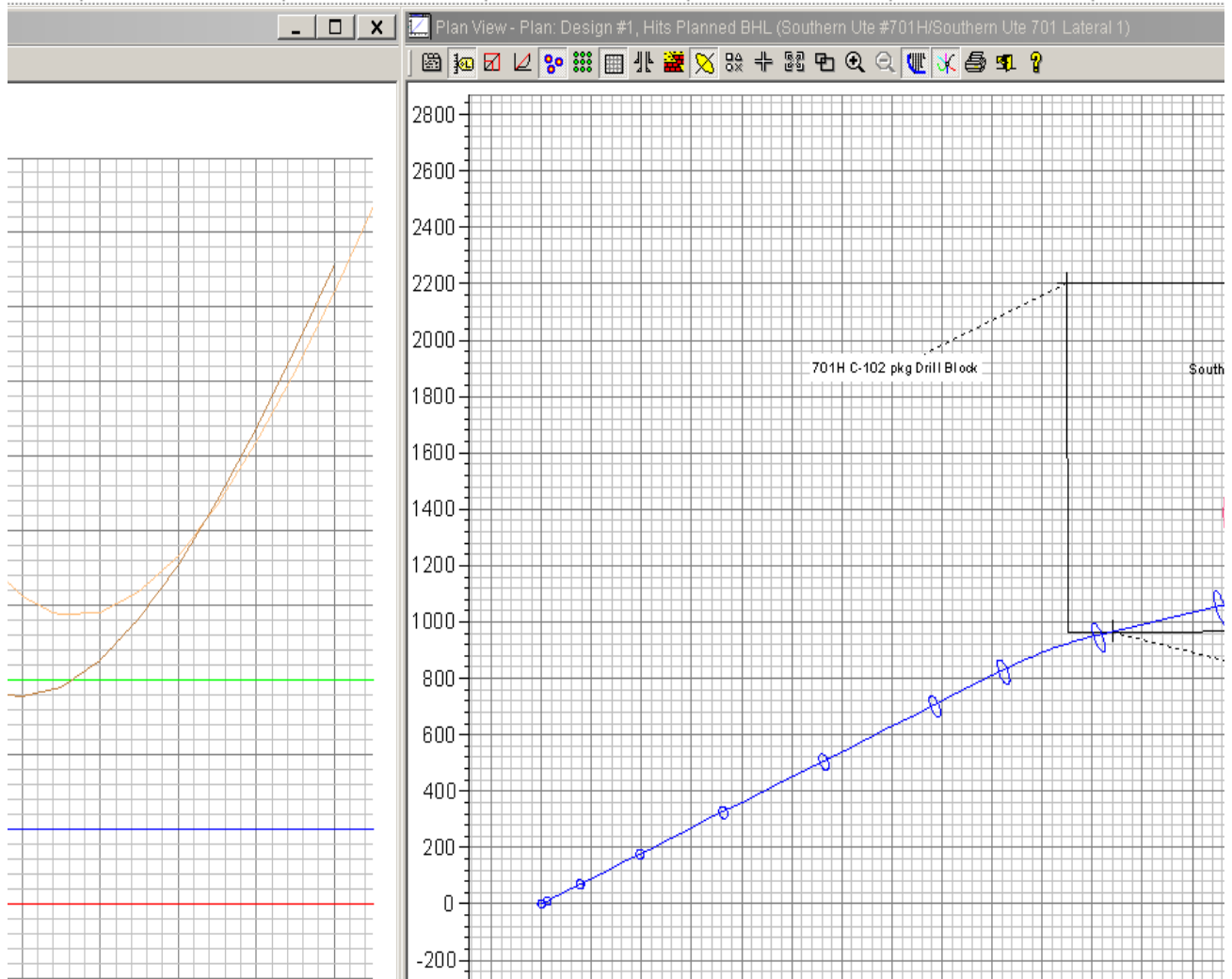
Offset Well - Wellbore - Design

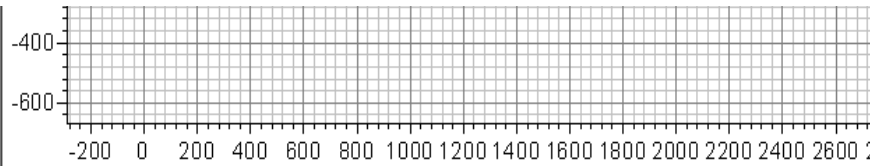
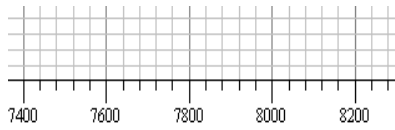
Southern Ute Wells (32N7W)

- Southern Ute #1X (Samson) - Wellbore #1 - Estimated (n
- Southern Ute #701 (COP) - Wellbore #1 - Actual Surveys
- Southern Ute #701 (COP) - Wellbore #1 - Actual Surveys
- Southern Ute #9 (Samson) - Wellbore #1 - Actual Survey
- Southern Ute #9 (Samson) - Wellbore #1 - Actual Survey

Surveys	Surface Latitude	Surface Longitude
Actual Inclination Surveys	37° 0' 45.435 N	107° 34' 27.700 W
Actual Inclination Surveys	37° 0' 46.072 N	107° 34' 26.310 W
No surveys (estimated)	37° 0' 47.325 N	107° 34' 54.336 W

	EW (usft)	V.Sec (usft)	Dogleg (°/100usft)	T.Face (°)	Build (°/100usft)	Turn (°/100usft)
0.0	0.0	0.0	0.00	0.00	0.00	
0.0	0.0	0.0	0.00	0.00	0.00	
783.9	1741.6	1904.8	3.00	65.77	3.00	
826.3	1835.9	2008.0	0.00	0.00	0.00	
952.3	2220.1	2412.1	3.00	90.00	0.00	
1275.2	3729.0	3940.2	0.00	0.00	0.00	
1716.0	5016.5	5300.7	1.00	-90.00	0.00	
2199.5	6020.3	6409.6	0.00	0.00	0.00	

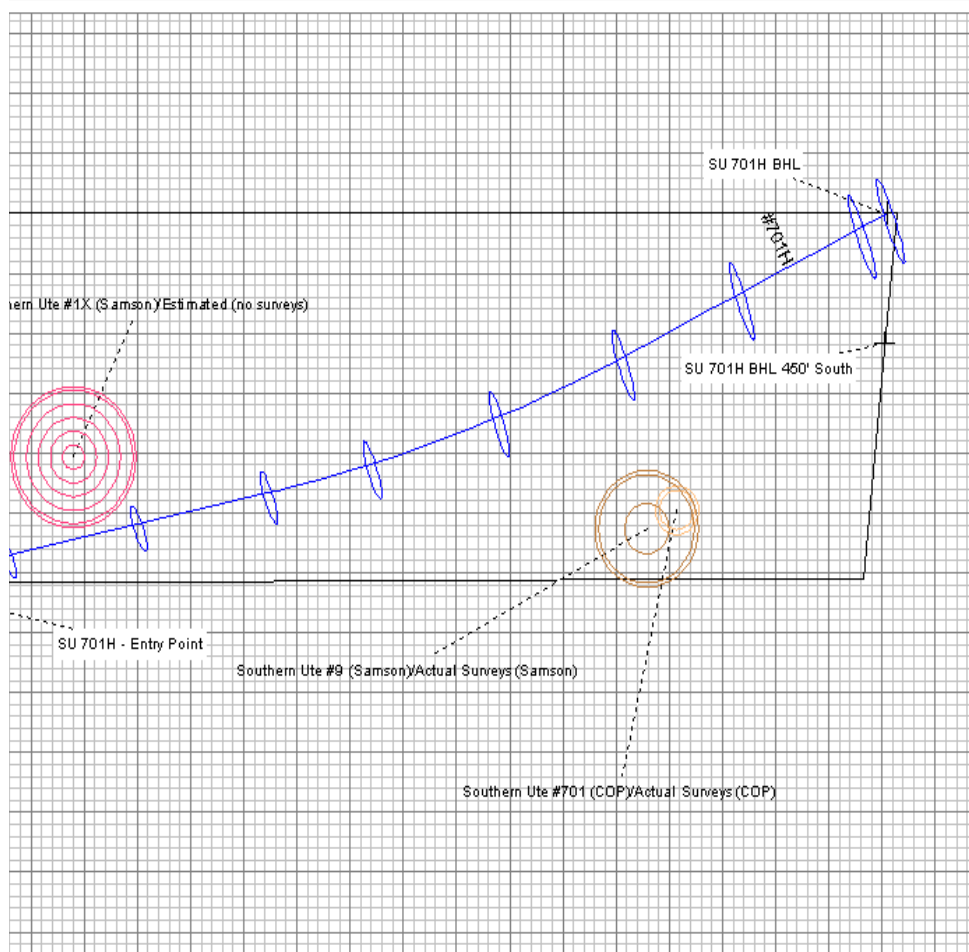


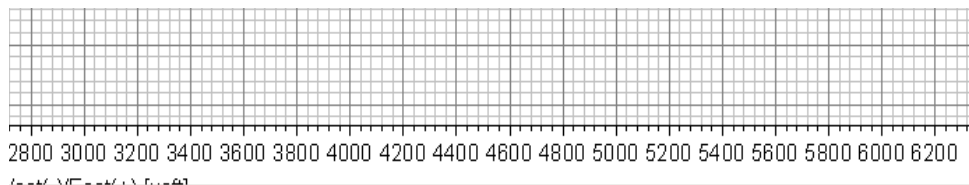


5.0

Reference Measured Depth (usft)	Offset Measured Depth (usft)	Distance		Separat Facto
		Between Centres (usft)	Between Ellipses (usft)	
5,412.6	3,385.5	269.2	97.7	1.
7,480.0	2,800.0	609.8	403.1	2.
7,500.0	2,800.0	610.2	402.5	2.
7,362.4	3,068.2	556.5	324.1	2.
7,400.0	3,068.2	557.9	324.0	2.

ft)	Section Type	Target
0.00	Tie Line	
0.00	Slant	
0.00	(ditto)	
0.00	(ditto)	
3.00	Online Inc	
0.00	StraightVSEC	
-1.00	Online Inc	SU 701H BHL
0.00	StraightVSEC	SU 701H BHL
	Insert Line	





ion		Warning	
r			
.570	Caution - Monitor Closely, C		
.950	Normal Operations, CC		
.939	Normal Operations, ES, SF		
.395	Caution - Monitor Closely, C		
.385	Caution - Monitor Closely, E		