

# T4N, R68W

S 89°37'33" W 5296.62' (M)

NW. COR.  
SEC. 26, T4N, R68W  
FOUND 2 1/2" ALUM. CAP  
L.S. NO. 24305

NE. COR.  
SEC. 26, T4N, R68W  
FOUND 2 1/2" ALUM. CAP  
L.S. NO. 26969

**SURFACE LOCATION**  
GROUND ELEVATION= 5072.6'  
NAD 83  
LATITUDE= 40.279089°  
LONGITUDE= -104.961969°

LATITUDE= 40°16'44.720"  
LONGITUDE= -104°57'43.088"

**BOTTOM HOLE LOCATION**  
NAD 83  
LATITUDE= 40.281377°  
LONGITUDE= -104.943383°

LATITUDE= 40°16'52.956"  
LONGITUDE= -104°56'36.178"

MATCH LINE  
SEE SHEET 2

N 00°13'16" W 5332.21' (M)

N 00°27'45" W 2656.03' (C)

S 89°24'32" W 2659.57' (C)

S 89°24'32" W 2643.55' (C)

N 00°21'35" W 5292.04' (M)

## 26

N 80°30'57" E 5252' GRID  
N 80°51'49" E TRUE  
N 72°16'57" E MAGNETIC

WELL BORE  
CONTINUES INTO  
SECTION 25

### WHISPER ROCK 8N-25HZ

SURFACE LOCATION

S. 1/4 COR.  
SEC. 26, T4N, R68W  
FOUND 2 1/2" ALUM. CAP  
L.S. NO. 38345

S 88°47'05" W 2671.03' (M)

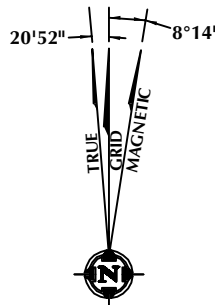
S 89°36'20" W 2638.80' (M)

SW. COR.  
SEC. 26, T4N, R68W  
FOUND 3 1/4" ALUM. CAP  
L.S. NO. 7242

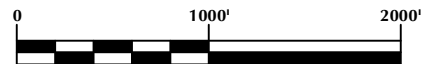
SE. COR.  
SEC. 26, T4N, R68W  
FOUND 3 1/4" ALUM. CAP  
L.S. NO. 12374

#### NOTES:

- ▲ INDICATES FOUND SECTION CORNER
- INDICATES CALCULATED CORNER
- ELEVATION BASED ON NAVD88 (GEOID09)
- BASIS OF BEARING DERIVED FROM COLORADO COORDINATE SYSTEM 1983 NORTH ZONE UNLESS OTHERWISE NOTED.
- ALL MEASURED DISTANCES ARE GRID. COMBINED SCALE FACTOR: .99971841
- OPERATOR: ROB WILSON / PDOP = 1.5
- SEE ADDENDUM TO WELL LOCATION CERTIFICATE FOR EXISTING IMPROVEMENTS WITHIN 500' OF THE WELL PAD.
- WELL FOOTAGES ARE MEASURED AT RIGHT ANGLES TO THE SECTION LINES.
- THE BOTTOM OF HOLE BEARS N80°30'57"E 5252' FROM THE SURFACE LOCATION.



NOTE:  
MAGNETIC NORTH IS CURRENT AS OF 4/25/2014.  
MAGNETIC NORTH CHANGES WEST 0°08' PER YEAR.



SCALE: 1" = 1000'

#### CERTIFICATE OF SURVEYOR:

THIS IS TO CERTIFY THAT THE ABOVE PLAT WAS PREPARED FROM FIELD NOTES OF ACTUAL SURVEY MADE BY ME OR UNDER MY SUPERVISION AND THAT THE SAME ARE TRUE AND CORRECT TO THE BEST OF MY KNOWLEDGE AND BELIEF. THIS CERTIFICATE DOES NOT REPRESENT A LAND SURVEY PLAT OR IMPROVEMENT SURVEY PLAT AS DEFINED BY C.S. 38-51-102 AND CANNOT BE RELIED UPON TO DETERMINE OWNERSHIP.

*Benjamin J. Reenders*  
PROFESSIONAL LAND SURVEYOR  
38305

BENJAMIN J. REENDERS  
PROFESSIONAL LAND SURVEYOR  
COLORADO REGISTRATION NUMBER 18330

NOTICE:  
ACCORDING TO COLORADO STATE LAW YOU MUST COMMENCE ANY LEGAL ACTION BASED UPON ANY DEFECT IN THIS SURVEY WITHIN THREE YEARS AFTER YOU FIRST DISCOVER SUCH DEFECT. IN NO EVENT MAY ANY ACTION BASED UPON ANY DEFECT IN THIS SURVEY BE COMMENCED MORE THAN TEN YEARS FROM THE DATE ON THE CERTIFICATION SHOWN HEREON.

#### WELL PAD - WILSON RANCH 34N-27HZ

WHISPER ROCK 8N-25HZ  
WELL LOCATION CERTIFICATE  
623' FSL & 349' FEL SESE (SURFACE)  
LOCATED IN SECTION 26  
1450' FSL & 460' FEL NESE (BOTTOM)  
LOCATED IN SECTION 25  
T4N, R68W, 6TH P.M.  
WELD COUNTY, COLORADO

**Kerr-McGee Oil &  
Gas Onshore L.P.**  
1099 18th Street  
Denver, Colorado 80202



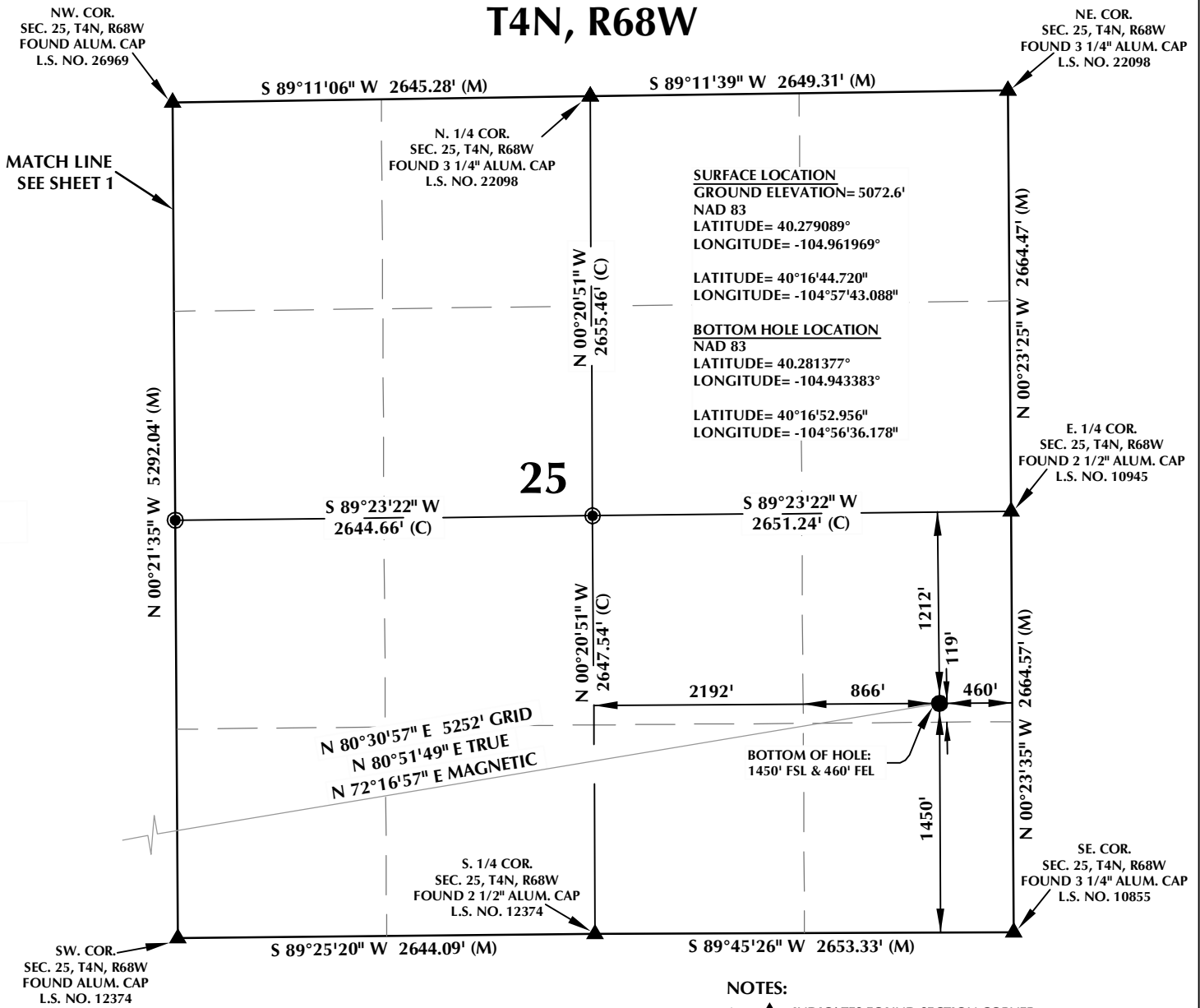
#### CONSULTING, LLC

SHERIDAN OFFICE  
2155 North Main Street  
Sheridan, Wyoming 82801  
Phone 307-674-0609

LOVELAND OFFICE  
1635 Foxtrail Drive, Suite 204  
Loveland, Colorado 80538  
Phone 970-776-4331

DRAFTED BY: LMO	CHECKED BY: BJR	SHEET NO: <b>1</b> 1 OF 2
DATE DRAFTED: 9/22/14	DATE SURVEYED: 4/23/14	
REVISED:	FILE NAME: 14-19	

# T4N, R68W

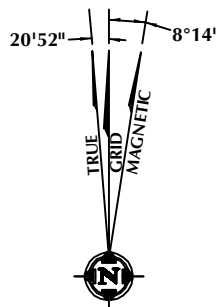


### CERTIFICATE OF SURVEYOR:

THIS IS TO CERTIFY THAT THE ABOVE PLAT WAS PREPARED FROM FIELD NOTES OF ACTUAL SURVEY MADE BY ME OR UNDER MY SUPERVISION AND THAT THE SAME ARE TRUE AND CORRECT TO THE BEST OF MY KNOWLEDGE AND BELIEF. THIS CERTIFICATE DOES NOT REPRESENT A LAND SURVEY PLAT OR IMPROVEMENT SURVEY PLAT AS DEFINED BY C.S. 38-51-102 AND CANNOT BE RELIED UPON TO DETERMINE OWNERSHIP.

*Benjamin J. Reenders*  
 BENJAMIN J. REENDERS  
 PROFESSIONAL LAND SURVEYOR  
 COLORADO REGISTRATION NUMBER 183305

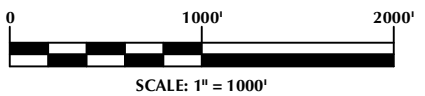
NOTICE: ACCORDING TO COLORADO STATE LAW YOU MUST COMMENCE ANY LEGAL ACTION BASED UPON ANY DEFECT IN THIS SURVEY WITHIN THREE YEARS AFTER YOU FIRST DISCOVER SUCH DEFECT. IN NO EVENT MAY ANY ACTION BASED UPON ANY DEFECT IN THIS SURVEY BE COMMENCED MORE THAN TEN YEARS FROM THE DATE ON THE CERTIFICATION SHOWN HEREON.



NOTE: MAGNETIC NORTH IS CURRENT AS OF 4/25/2014. MAGNETIC NORTH CHANGES WEST 0°08' PER YEAR.

### NOTES:

- ▲ INDICATES FOUND SECTION CORNER
- INDICATES CALCULATED CORNER
- ELEVATION BASED ON NAVD88 (GEOID09)
- BASIS OF BEARING DERIVED FROM COLORADO COORDINATE SYSTEM 1983 NORTH ZONE UNLESS OTHERWISE NOTED.
- ALL MEASURED DISTANCES ARE GRID. COMBINED SCALE FACTOR: .99971841
- OPERATOR: ROB WILSON / PDOP = 1.5
- SEE ADDENDUM TO WELL LOCATION CERTIFICATE FOR EXISTING IMPROVEMENTS WITHIN 500' OF THE WELL PAD.
- WELL FOOTAGES ARE MEASURED AT RIGHT ANGLES TO THE SECTION LINES.
- THE BOTTOM OF HOLE BEARS N80°30'57"E 5252' FROM THE SURFACE LOCATION.



### WELL PAD - WILSON RANCH 34N-27HZ

WHISPER ROCK 8N-25HZ  
 WELL LOCATION CERTIFICATE  
 623' FSL & 349' FEL SESE (SURFACE)  
 LOCATED IN SECTION 26  
 1450' FSL & 460' FEL NESE (BOTTOM)  
 LOCATED IN SECTION 25  
 T4N, R68W, 6TH P.M.  
 WELD COUNTY, COLORADO

**Kerr-McGee Oil & Gas Onshore L.P.**  
 1099 18th Street  
 Denver, Colorado 80202



### CONSULTING, LLC

SHERIDAN OFFICE: 2155 North Main Street, Sheridan, Wyoming 82801, Phone 307-674-0609  
 LOVELAND OFFICE: 1635 Foxtrail Drive, Suite 204, Loveland, Colorado 80538, Phone 970-776-4331

DRAFTED BY: LMO	CHECKED BY: BJR	SHEET NO: <b>2</b> 2 OF 2
DATE DRAFTED: 9/22/14	DATE SURVEYED: 4/23/14	
REVISED:	FILE NAME: 14-19	

K:\ADARKO\2014\2014\_19\_COLORADO\_T4N\_R68W\_SEC\_26\_&\_SEC\_27\PLATS\WILSON RANCH 34N-27HZ\WHISPER ROCK 34N-27HZ.dwg, 9/22/2014 3:43:03 PM, .arc