

US ROCKIES WATTENBERG PLANNING

WELD-NAD83-UTMFT13N
Wilson Ranch 16-26HZ Pad
WHISPER ROCK 10N-25HZ

Plan A

Plan: Permit Rev-1

Sperry Drilling Services

Proposal Report

05 December, 2014

Well Coordinates: 14,628,275.84 N, 1,651,023.28 E (40° 16' 43.83" N, 104° 57' 43.10" W)

Ground Level: 5,075.00 usft

Local Coordinate Origin:	Centered on Well WHISPER ROCK 10N-25HZ
Viewing Datum:	RKB = 17' @ 5092.00usft (Drilling Rig)
TVDs to System:	N
North Reference:	True
Unit System:	Dec-Deg - API - US Survey Feet - Custom

Version: 5000.1 Build: 70

HALLIBURTON

Project: WELD-NAD83-UTMFT13N
 Site: Wilson Ranch 16-26HZ Pad
 Well: WHISPER ROCK 10N-25HZ
 Wellbore: Plan A
 Design: Permit Rev-1

US ROCKIES WATTENBERG PLANNING

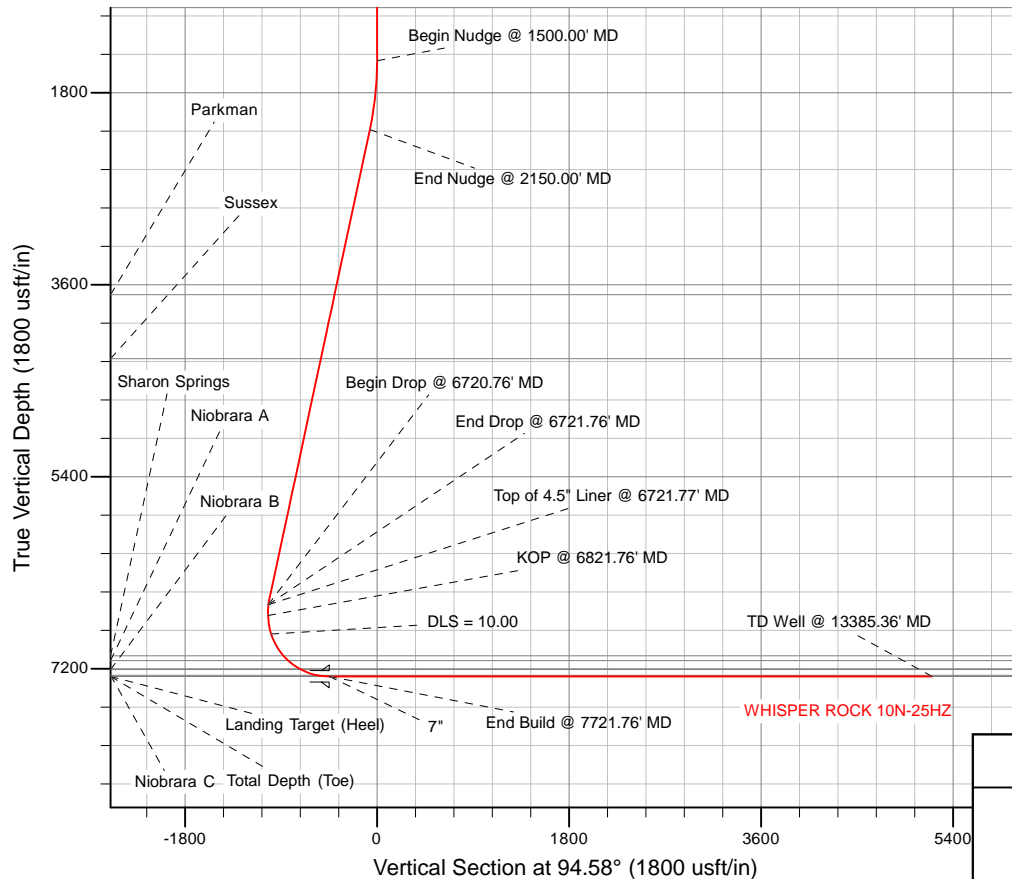
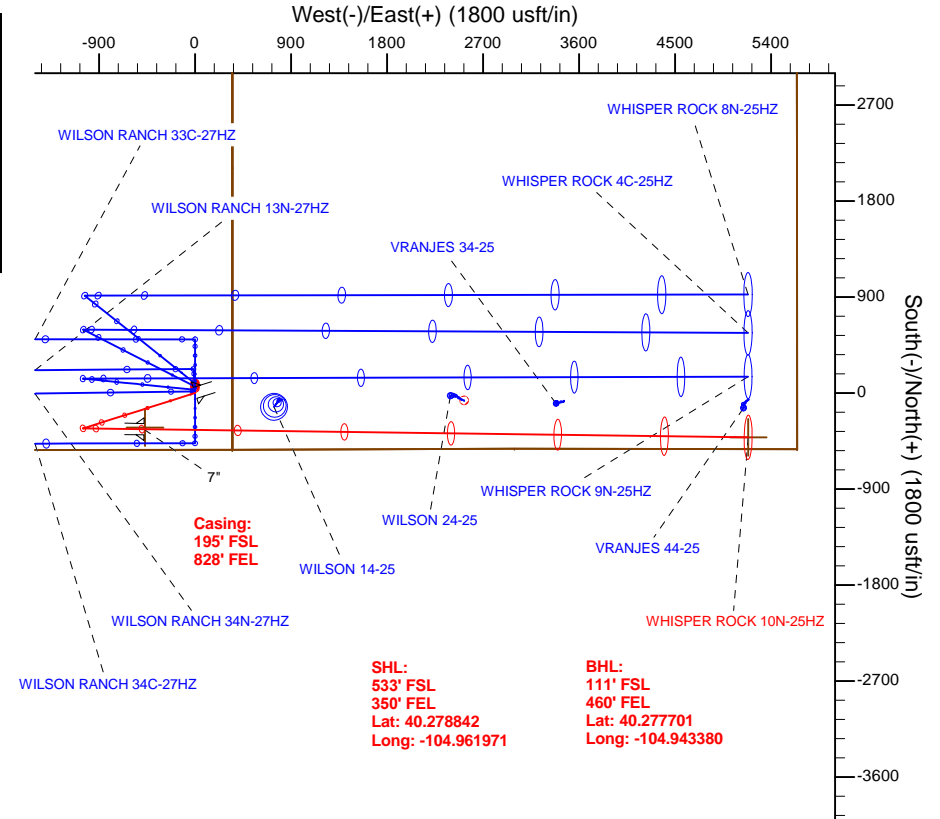


SECTION DETAILS

Sec	MD	Inc	Azi	TVD	+N/-S	+E/-W	Dleg	TFace	VSec	Target
1	0.00	0.00	0.00	0.00	0.00	0.00	0.00	0.00	0.00	
2	1500.00	0.00	0.00	1500.00	0.00	0.00	0.00	0.00	0.00	
3	2150.00	13.00	252.50	2144.44	-22.08	-70.03	2.00	252.50	-68.04	
4	6720.76	13.00	252.50	6598.05	-331.26	-1050.64	0.00	0.00	-1020.86	
5	6721.76	0.00	0.00	6599.04	-331.30	-1050.74	300.00	180.00	-1020.96	
6	6821.76	0.00	0.00	6699.04	-331.30	-1050.74	0.00	0.00	-1020.96	
7	7721.76	90.00	90.77	7272.00	-338.99	-477.84	10.00	90.77	-449.27	
8	13385.36	90.00	90.77	7272.00	-415.00	5185.26	0.00	0.00	5201.84	WHISPER ROCK 10N-25HZ_BHL

WELLBORE TARGET DETAILS (LAT/LONG)

Name	TVD	+N/-S	+E/-W	Latitude	Longitude	Shape
4N-R68W-Sec. 25_Section Lines	123.00	4096.42	-409.93	40.290091	-104.963441	Polygon
4N-R68W-Sec. 26_Section Lines	123.00	4096.42	-409.93	40.290091	-104.963441	Polygon
4N-R68W-Sec. 27_Section Lines	123.00	4096.42	-409.93	40.290091	-104.963441	Polygon
WHISPER ROCK 10N-25HZ_BHL	7272.00	-415.00	5185.26	40.277701	-104.943380	Point
WHISPER ROCK 10N-25HZ_Heel	7272.00	-323.00	-470.00	40.277955	-104.963656	Point



TVD	MD	Annotation
6599.05	6721.77	Top of 4.5" Liner @ 6721.77'
6699.04	6821.76	KOP @ 6821.76' MD

WELL DETAILS: WHISPER ROCK 10N-25HZ	
Ground Level:	5075.00
RKB = 17' @ 5092.00usft (Drilling Rig)	
MD Plan:	Permit Rev-1 (WHISPER ROCK 10N-25HZ/Plan A)
Created By:	Katie Benner
Reviewed:	
Date:	12/5/2014
Date:	



Plan Report for WHISPER ROCK 10N-25HZ - Permit Rev-1

Measured Depth (usft)	Inclination (°)	Azimuth (°)	Vertical Depth (usft)	+N/-S (usft)	+E/-W (usft)	Vertical Section (usft)	Dogleg Rate (°/100usft)	Build Rate (°/100usft)	Turn Rate (°/100usft)	Toolface Azimuth (°)
0.00	0.00	0.00	0.00	0.00	0.00	0.00	0.00	0.00	0.00	0.00
100.00	0.00	0.00	100.00	0.00	0.00	0.00	0.00	0.00	0.00	0.00
123.00	0.00	0.00	123.00	0.00	0.00	0.00	0.00	0.00	0.00	0.00
4N-R68W-Sec. 26_Section Lines - 4N-R68W-Sec. 27_Section Lines - 4N-R68W-Sec. 25_Section Lines										
200.00	0.00	0.00	200.00	0.00	0.00	0.00	0.00	0.00	0.00	0.00
300.00	0.00	0.00	300.00	0.00	0.00	0.00	0.00	0.00	0.00	0.00
400.00	0.00	0.00	400.00	0.00	0.00	0.00	0.00	0.00	0.00	0.00
500.00	0.00	0.00	500.00	0.00	0.00	0.00	0.00	0.00	0.00	0.00
600.00	0.00	0.00	600.00	0.00	0.00	0.00	0.00	0.00	0.00	0.00
700.00	0.00	0.00	700.00	0.00	0.00	0.00	0.00	0.00	0.00	0.00
754.00	0.00	0.00	754.00	0.00	0.00	0.00	0.00	0.00	0.00	0.00
9 5/8"										
800.00	0.00	0.00	800.00	0.00	0.00	0.00	0.00	0.00	0.00	0.00
900.00	0.00	0.00	900.00	0.00	0.00	0.00	0.00	0.00	0.00	0.00
1,000.00	0.00	0.00	1,000.00	0.00	0.00	0.00	0.00	0.00	0.00	0.00
1,100.00	0.00	0.00	1,100.00	0.00	0.00	0.00	0.00	0.00	0.00	0.00
1,200.00	0.00	0.00	1,200.00	0.00	0.00	0.00	0.00	0.00	0.00	0.00
1,300.00	0.00	0.00	1,300.00	0.00	0.00	0.00	0.00	0.00	0.00	0.00
1,400.00	0.00	0.00	1,400.00	0.00	0.00	0.00	0.00	0.00	0.00	0.00
1,500.00	0.00	0.00	1,500.00	0.00	0.00	0.00	0.00	0.00	0.00	0.00
Begin Nudge @ 1500.00' MD										
1,600.00	2.00	252.50	1,599.98	-0.52	-1.66	-1.62	2.00	2.00	0.00	252.50
1,700.00	4.00	252.50	1,699.84	-2.10	-6.66	-6.47	2.00	2.00	0.00	0.00
1,800.00	6.00	252.50	1,799.45	-4.72	-14.97	-14.54	2.00	2.00	0.00	0.00
1,900.00	8.00	252.50	1,898.70	-8.38	-26.59	-25.84	2.00	2.00	0.00	0.00
2,000.00	10.00	252.50	1,997.47	-13.09	-41.51	-40.33	2.00	2.00	0.00	0.00
2,100.00	12.00	252.50	2,095.62	-18.82	-59.71	-58.01	2.00	2.00	0.00	0.00
2,150.00	13.00	252.50	2,144.44	-22.08	-70.03	-68.04	2.00	2.00	0.00	0.00
End Nudge @ 2150.00' MD										
2,200.00	13.00	252.50	2,193.16	-25.46	-80.75	-78.46	0.00	0.00	0.00	0.00
2,300.00	13.00	252.50	2,290.59	-32.23	-102.21	-99.31	0.00	0.00	0.00	0.00
2,400.00	13.00	252.50	2,388.03	-38.99	-123.66	-120.16	0.00	0.00	0.00	0.00
2,500.00	13.00	252.50	2,485.47	-45.75	-145.11	-141.00	0.00	0.00	0.00	0.00
2,600.00	13.00	252.50	2,582.90	-52.52	-166.57	-161.85	0.00	0.00	0.00	0.00
2,700.00	13.00	252.50	2,680.34	-59.28	-188.02	-182.69	0.00	0.00	0.00	0.00
2,800.00	13.00	252.50	2,777.78	-66.05	-209.48	-203.54	0.00	0.00	0.00	0.00
2,900.00	13.00	252.50	2,875.21	-72.81	-230.93	-224.39	0.00	0.00	0.00	0.00
3,000.00	13.00	252.50	2,972.65	-79.58	-252.38	-245.23	0.00	0.00	0.00	0.00
3,100.00	13.00	252.50	3,070.09	-86.34	-273.84	-266.08	0.00	0.00	0.00	0.00
3,200.00	13.00	252.50	3,167.53	-93.11	-295.29	-286.92	0.00	0.00	0.00	0.00
3,300.00	13.00	252.50	3,264.96	-99.87	-316.75	-307.77	0.00	0.00	0.00	0.00
3,400.00	13.00	252.50	3,362.40	-106.63	-338.20	-328.62	0.00	0.00	0.00	0.00
3,500.00	13.00	252.50	3,459.84	-113.40	-359.65	-349.46	0.00	0.00	0.00	0.00
3,600.00	13.00	252.50	3,557.27	-120.16	-381.11	-370.31	0.00	0.00	0.00	0.00
3,700.00	13.00	252.50	3,654.71	-126.93	-402.56	-391.15	0.00	0.00	0.00	0.00
3,737.24	13.00	252.50	3,691.00	-129.45	-410.55	-398.92	0.00	0.00	0.00	0.00
Parkman										
3,800.00	13.00	252.50	3,752.15	-133.69	-424.02	-412.00	0.00	0.00	0.00	0.00
3,900.00	13.00	252.50	3,849.58	-140.46	-445.47	-432.84	0.00	0.00	0.00	0.00
4,000.00	13.00	252.50	3,947.02	-147.22	-466.92	-453.69	0.00	0.00	0.00	0.00
4,100.00	13.00	252.50	4,044.46	-153.99	-488.38	-474.54	0.00	0.00	0.00	0.00
4,200.00	13.00	252.50	4,141.90	-160.75	-509.83	-495.38	0.00	0.00	0.00	0.00
4,300.00	13.00	252.50	4,239.33	-167.51	-531.29	-516.23	0.00	0.00	0.00	0.00
4,355.08	13.00	252.50	4,293.00	-171.24	-543.10	-527.71	0.00	0.00	0.00	0.00
Sussex										
4,400.00	13.00	252.50	4,336.77	-174.28	-552.74	-537.07	0.00	0.00	0.00	0.00
4,500.00	13.00	252.50	4,434.21	-181.04	-574.19	-557.92	0.00	0.00	0.00	0.00
4,600.00	13.00	252.50	4,531.64	-187.81	-595.65	-578.77	0.00	0.00	0.00	0.00

Plan Report for WHISPER ROCK 10N-25HZ - Permit Rev-1

Measured Depth (usft)	Inclination (°)	Azimuth (°)	Vertical Depth (usft)	+N/-S (usft)	+E/-W (usft)	Vertical Section (usft)	Dogleg Rate (°/100usft)	Build Rate (°/100usft)	Turn Rate (°/100usft)	Toolface Azimuth (°)
4,700.00	13.00	252.50	4,629.08	-194.57	-617.10	-599.61	0.00	0.00	0.00	0.00
4,800.00	13.00	252.50	4,726.52	-201.34	-638.56	-620.46	0.00	0.00	0.00	0.00
4,900.00	13.00	252.50	4,823.95	-208.10	-660.01	-641.30	0.00	0.00	0.00	0.00
5,000.00	13.00	252.50	4,921.39	-214.86	-681.46	-662.15	0.00	0.00	0.00	0.00
5,100.00	13.00	252.50	5,018.83	-221.63	-702.92	-683.00	0.00	0.00	0.00	0.00
5,200.00	13.00	252.50	5,116.27	-228.39	-724.37	-703.84	0.00	0.00	0.00	0.00
5,300.00	13.00	252.50	5,213.70	-235.16	-745.83	-724.69	0.00	0.00	0.00	0.00
5,400.00	13.00	252.50	5,311.14	-241.92	-767.28	-745.53	0.00	0.00	0.00	0.00
5,500.00	13.00	252.50	5,408.58	-248.69	-788.73	-766.38	0.00	0.00	0.00	0.00
5,600.00	13.00	252.50	5,506.01	-255.45	-810.19	-787.23	0.00	0.00	0.00	0.00
5,700.00	13.00	252.50	5,603.45	-262.22	-831.64	-808.07	0.00	0.00	0.00	0.00
5,800.00	13.00	252.50	5,700.89	-268.98	-853.10	-828.92	0.00	0.00	0.00	0.00
5,900.00	13.00	252.50	5,798.33	-275.74	-874.55	-849.76	0.00	0.00	0.00	0.00
6,000.00	13.00	252.50	5,895.76	-282.51	-896.00	-870.61	0.00	0.00	0.00	0.00
6,100.00	13.00	252.50	5,993.20	-289.27	-917.46	-891.46	0.00	0.00	0.00	0.00
6,200.00	13.00	252.50	6,090.64	-296.04	-938.91	-912.30	0.00	0.00	0.00	0.00
6,300.00	13.00	252.50	6,188.07	-302.80	-960.37	-933.15	0.00	0.00	0.00	0.00
6,400.00	13.00	252.50	6,285.51	-309.57	-981.82	-953.99	0.00	0.00	0.00	0.00
6,500.00	13.00	252.50	6,382.95	-316.33	-1,003.27	-974.84	0.00	0.00	0.00	0.00
6,600.00	13.00	252.50	6,480.38	-323.10	-1,024.73	-995.68	0.00	0.00	0.00	0.00
6,700.00	13.00	252.50	6,577.82	-329.86	-1,046.18	-1,016.53	0.00	0.00	0.00	0.00
6,720.76	13.00	252.50	6,598.05	-331.26	-1,050.64	-1,020.86	0.00	0.00	0.00	0.00
Begin Drop @ 6720.76' MD										
6,721.76	0.00	0.00	6,599.04	-331.30	-1,050.74	-1,020.96	1,300.00	-1,300.00	0.00	180.00
End Drop @ 6721.76' MD										
6,721.77	0.00	0.00	6,599.05	-331.30	-1,050.74	-1,020.96	0.00	0.00	0.00	0.00
Top of 4.5" Liner @ 6721.77' MD										
6,800.00	0.00	0.00	6,677.28	-331.30	-1,050.74	-1,020.96	0.00	0.00	0.00	0.00
6,821.76	0.00	0.00	6,699.04	-331.30	-1,050.74	-1,020.96	0.00	0.00	0.00	0.00
KOP @ 6821.76' MD										
6,900.00	7.82	90.77	6,777.04	-331.37	-1,045.41	-1,015.64	10.00	10.00	0.00	90.77
7,000.00	17.82	90.77	6,874.42	-331.67	-1,023.24	-993.52	10.00	10.00	0.00	0.00
DLS = 10.00										
7,100.00	27.82	90.77	6,966.47	-332.19	-984.51	-954.87	10.00	10.00	0.00	0.00
7,200.00	37.82	90.77	7,050.40	-332.91	-930.38	-900.85	10.00	10.00	0.00	0.00
7,235.83	41.41	90.77	7,078.00	-333.22	-907.53	-878.06	10.00	10.00	0.00	0.00
Sharon Springs										
7,299.03	47.73	90.77	7,123.00	-333.82	-863.21	-833.83	10.00	10.00	0.00	0.00
Niobrara A										
7,300.00	47.82	90.77	7,123.65	-333.82	-862.49	-833.11	10.00	10.00	0.00	0.00
7,400.00	57.82	90.77	7,184.00	-334.89	-782.92	-753.71	10.00	10.00	0.00	0.00
7,446.20	62.44	90.77	7,207.00	-335.43	-742.88	-713.75	10.00	10.00	0.00	0.00
Niobrara B										
7,500.00	67.82	90.77	7,229.62	-336.09	-694.08	-665.06	10.00	10.00	0.00	0.00
7,600.00	77.82	90.77	7,259.11	-337.37	-598.67	-569.85	10.00	10.00	0.00	0.00
7,614.56	79.28	90.77	7,262.00	-337.56	-584.40	-555.61	10.00	10.00	0.00	0.00
Niobrara C										
7,700.00	87.82	90.77	7,271.59	-338.70	-499.59	-470.98	10.00	10.00	0.00	0.00
7,721.76	90.00	90.77	7,272.00	-338.99	-477.84	-449.27	10.00	10.00	0.00	0.00
End Build @ 7721.76' MD - Landing Target (Heel) - Total Depth (Toe) - 7"										
7,729.38	90.00	90.77	7,272.00	-339.09	-470.22	-441.66	0.00	0.00	0.00	0.00
WHISPER ROCK 10N-25HZ_Heel										
7,800.00	90.00	90.77	7,272.00	-340.04	-399.61	-371.20	0.00	0.00	0.00	0.00
7,900.00	90.00	90.77	7,272.00	-341.38	-299.61	-271.42	0.00	0.00	0.00	0.00
8,000.00	90.00	90.77	7,272.00	-342.72	-199.62	-171.64	0.00	0.00	0.00	0.00
8,100.00	90.00	90.77	7,272.00	-344.06	-99.63	-71.87	0.00	0.00	0.00	0.00
8,200.00	90.00	90.77	7,272.00	-345.41	0.36	27.91	0.00	0.00	0.00	0.00
8,300.00	90.00	90.77	7,272.00	-346.75	100.35	127.69	0.00	0.00	0.00	0.00

Plan Report for WHISPER ROCK 10N-25HZ - Permit Rev-1

Measured Depth (usft)	Inclination (°)	Azimuth (°)	Vertical Depth (usft)	+N/-S (usft)	+E/-W (usft)	Vertical Section (usft)	Dogleg Rate (°/100usft)	Build Rate (°/100usft)	Turn Rate (°/100usft)	Toolface Azimuth (°)
8,400.00	90.00	90.77	7,272.00	-348.09	200.34	227.47	0.00	0.00	0.00	0.00
8,500.00	90.00	90.77	7,272.00	-349.43	300.33	327.25	0.00	0.00	0.00	0.00
8,600.00	90.00	90.77	7,272.00	-350.77	400.32	427.03	0.00	0.00	0.00	0.00
8,700.00	90.00	90.77	7,272.00	-352.12	500.31	526.81	0.00	0.00	0.00	0.00
8,800.00	90.00	90.77	7,272.00	-353.46	600.30	626.59	0.00	0.00	0.00	0.00
8,900.00	90.00	90.77	7,272.00	-354.80	700.30	726.37	0.00	0.00	0.00	0.00
9,000.00	90.00	90.77	7,272.00	-356.14	800.29	826.15	0.00	0.00	0.00	0.00
9,100.00	90.00	90.77	7,272.00	-357.49	900.28	925.93	0.00	0.00	0.00	0.00
9,200.00	90.00	90.77	7,272.00	-358.83	1,000.27	1,025.71	0.00	0.00	0.00	0.00
9,300.00	90.00	90.77	7,272.00	-360.17	1,100.26	1,125.49	0.00	0.00	0.00	0.00
9,400.00	90.00	90.77	7,272.00	-361.51	1,200.25	1,225.27	0.00	0.00	0.00	0.00
9,500.00	90.00	90.77	7,272.00	-362.85	1,300.24	1,325.05	0.00	0.00	0.00	0.00
9,600.00	90.00	90.77	7,272.00	-364.20	1,400.23	1,424.83	0.00	0.00	0.00	0.00
9,700.00	90.00	90.77	7,272.00	-365.54	1,500.22	1,524.60	0.00	0.00	0.00	0.00
9,800.00	90.00	90.77	7,272.00	-366.88	1,600.21	1,624.38	0.00	0.00	0.00	0.00
9,900.00	90.00	90.77	7,272.00	-368.22	1,700.21	1,724.16	0.00	0.00	0.00	0.00
10,000.00	90.00	90.77	7,272.00	-369.56	1,800.20	1,823.94	0.00	0.00	0.00	0.00
10,100.00	90.00	90.77	7,272.00	-370.91	1,900.19	1,923.72	0.00	0.00	0.00	0.00
10,200.00	90.00	90.77	7,272.00	-372.25	2,000.18	2,023.50	0.00	0.00	0.00	0.00
10,300.00	90.00	90.77	7,272.00	-373.59	2,100.17	2,123.28	0.00	0.00	0.00	0.00
10,400.00	90.00	90.77	7,272.00	-374.93	2,200.16	2,223.06	0.00	0.00	0.00	0.00
10,500.00	90.00	90.77	7,272.00	-376.28	2,300.15	2,322.84	0.00	0.00	0.00	0.00
10,600.00	90.00	90.77	7,272.00	-377.62	2,400.14	2,422.62	0.00	0.00	0.00	0.00
10,700.00	90.00	90.77	7,272.00	-378.96	2,500.13	2,522.40	0.00	0.00	0.00	0.00
10,800.00	90.00	90.77	7,272.00	-380.30	2,600.12	2,622.18	0.00	0.00	0.00	0.00
10,900.00	90.00	90.77	7,272.00	-381.64	2,700.12	2,721.96	0.00	0.00	0.00	0.00
11,000.00	90.00	90.77	7,272.00	-382.99	2,800.11	2,821.74	0.00	0.00	0.00	0.00
11,100.00	90.00	90.77	7,272.00	-384.33	2,900.10	2,921.52	0.00	0.00	0.00	0.00
11,200.00	90.00	90.77	7,272.00	-385.67	3,000.09	3,021.29	0.00	0.00	0.00	0.00
11,300.00	90.00	90.77	7,272.00	-387.01	3,100.08	3,121.07	0.00	0.00	0.00	0.00
11,400.00	90.00	90.77	7,272.00	-388.35	3,200.07	3,220.85	0.00	0.00	0.00	0.00
11,500.00	90.00	90.77	7,272.00	-389.70	3,300.06	3,320.63	0.00	0.00	0.00	0.00
11,600.00	90.00	90.77	7,272.00	-391.04	3,400.05	3,420.41	0.00	0.00	0.00	0.00
11,700.00	90.00	90.77	7,272.00	-392.38	3,500.04	3,520.19	0.00	0.00	0.00	0.00
11,800.00	90.00	90.77	7,272.00	-393.72	3,600.03	3,619.97	0.00	0.00	0.00	0.00
11,900.00	90.00	90.77	7,272.00	-395.06	3,700.03	3,719.75	0.00	0.00	0.00	0.00
12,000.00	90.00	90.77	7,272.00	-396.41	3,800.02	3,819.53	0.00	0.00	0.00	0.00
12,100.00	90.00	90.77	7,272.00	-397.75	3,900.01	3,919.31	0.00	0.00	0.00	0.00
12,200.00	90.00	90.77	7,272.00	-399.09	4,000.00	4,019.09	0.00	0.00	0.00	0.00
12,300.00	90.00	90.77	7,272.00	-400.43	4,099.99	4,118.87	0.00	0.00	0.00	0.00
12,400.00	90.00	90.77	7,272.00	-401.78	4,199.98	4,218.65	0.00	0.00	0.00	0.00
12,500.00	90.00	90.77	7,272.00	-403.12	4,299.97	4,318.43	0.00	0.00	0.00	0.00
12,600.00	90.00	90.77	7,272.00	-404.46	4,399.96	4,418.21	0.00	0.00	0.00	0.00
12,700.00	90.00	90.77	7,272.00	-405.80	4,499.95	4,517.98	0.00	0.00	0.00	0.00
12,800.00	90.00	90.77	7,272.00	-407.14	4,599.94	4,617.76	0.00	0.00	0.00	0.00
12,900.00	90.00	90.77	7,272.00	-408.49	4,699.94	4,717.54	0.00	0.00	0.00	0.00
13,000.00	90.00	90.77	7,272.00	-409.83	4,799.93	4,817.32	0.00	0.00	0.00	0.00
13,100.00	90.00	90.77	7,272.00	-411.17	4,899.92	4,917.10	0.00	0.00	0.00	0.00
13,200.00	90.00	90.77	7,272.00	-412.51	4,999.91	5,016.88	0.00	0.00	0.00	0.00
13,300.00	90.00	90.77	7,272.00	-413.85	5,099.90	5,116.66	0.00	0.00	0.00	0.00
13,385.36	90.00	90.77	7,272.00	-415.00	5,185.26	5,201.84	0.00	0.00	0.00	0.00

TD Well @ 13385.36' MD - WHISPER ROCK 10N-25HZ_BHL

Plan Report for WHISPER ROCK 10N-25HZ - Permit Rev-1

Plan Annotations

Measured Depth (usft)	Vertical Depth (usft)	Local Coordinates		Comment
		+N/-S (usft)	+E/-W (usft)	
1,500.00	1,500.00	0.00	0.00	Begin Nudge @ 1500.00' MD
2,150.00	2,144.44	-22.08	-70.03	End Nudge @ 2150.00' MD
6,720.76	6,598.05	-331.26	-1,050.64	Begin Drop @ 6720.76' MD
6,721.76	6,599.04	-331.30	-1,050.74	End Drop @ 6721.76' MD
6,721.77	6,599.05	-331.30	-1,050.74	Top of 4.5" Liner @ 6721.77' MD
6,821.76	6,699.04	-331.30	-1,050.74	KOP @ 6821.76' MD
7,000.00	6,874.42	-331.67	-1,023.24	DLS = 10.00
7,721.76	7,272.00	-338.99	-477.84	End Build @ 7721.76' MD
13,385.36	7,272.00	-415.00	5,185.26	TD Well @ 13385.36' MD

Vertical Section Information

Angle Type	Target	Azimuth (°)	Origin Type	Origin +N/_S (usft)	Origin +E/-W (usft)	Start TVD (usft)
TD	No Target (Freehand)	94.58	Slot	0.00	0.00	0.00

Survey tool program

From (usft)	To (usft)	Survey/Plan	Survey Tool
0.00	7,721.76	Permit Rev-1	MWD+IFR1
7,721.76	13,385.36	Permit Rev-1	MWD+IFR1

Casing Details

Measured Depth (usft)	Vertical Depth (usft)	Name	Casing Diameter (")	Hole Diameter (")
754.00	754.00	9 5/8"	9-5/8	13-1/2
7,721.76	7,272.00	7"	7	8-3/4

Formation Details

Measured Depth (usft)	Vertical Depth (usft)	Name	Lithology	Dip (°)	Dip Direction (°)
3,737.24	3,691.00	Parkman			
4,355.08	4,293.00	Sussex			
7,235.83	7,078.00	Sharon Springs			
7,299.03	7,123.00	Niobrara A			
7,446.20	7,207.00	Niobrara B			
7,614.56	7,262.00	Niobrara C			
7,721.76	7,272.00	Landing Target (Heel)			
7,721.76	7,272.00	Total Depth (Toe)			

Targets associated with this wellbore

Target Name	TVD (usft)	+N/-S (usft)	+E/-W (usft)	Shape
WHISPER ROCK 10N-25HZ_BHL	7,272.00	-415.00	5,185.26	Point
WHISPER ROCK 10N-25HZ_Heel	7,272.00	-323.00	-470.00	Point
4N-R68W-Sec. 26_Section Lines	123.00	4,096.42	-409.93	Polygon
4N-R68W-Sec. 27_Section Lines	123.00	4,096.42	-409.93	Polygon
4N-R68W-Sec. 25_Section Lines	123.00	4,096.42	-409.93	Polygon

**North Reference Sheet for Wilson Ranch 16-26HZ Pad - WHISPER ROCK
10N-25HZ - Plan A**

All data is in US Feet unless otherwise stated. Directions and Coordinates are relative to True North Reference.

Vertical Depths are relative to RKB = 17' @ 5092.00usft (Drilling Rig). Northing and Easting are relative to WHISPER ROCK 10N-25HZ

Coordinate System is Universal Transverse Mercator (US Survey Feet), Zone 13N (108 W to 102 W) using datum North American Datum 1983, ellipsoid

Projection method is Transverse Mercator (Gauss-Kruger)

Central Meridian is -105.00°, Longitude Origin:0.000000°, Latitude Origin:0.000000°

False Easting: 1,640,416.67usft, False Northing: 0.00usft, Scale Reduction: 0.99960013

Grid Coordinates of Well: 14,628,275.84 usft N, 1,651,023.28 usft E

Geographical Coordinates of Well: 40° 16' 43.83" N, 104° 57' 43.10" W

Grid Convergence at Surface is: 0.02°

Based upon Minimum Curvature type calculations, at a Measured Depth of 13,385.36usft
the Bottom Hole Displacement is 5,201.84usft in the Direction of 94.58° (True).

Magnetic Convergence at surface is: -8.47° (25 November 2014, , IGRF2010)

