

# T4N, R68W

S 89°37'33" W 5296.62' (M)

NW. COR.  
SEC. 26, T4N, R68W  
FOUND 2 1/2" ALUM. CAP  
L.S. NO. 24305

NE. COR.  
SEC. 26, T4N, R68W  
FOUND 2 1/2" ALUM. CAP  
L.S. NO. 26969

MATCH LINE  
SEE SHEET 2

**SURFACE LOCATION**  
GROUND ELEVATION= 5073.1'  
NAD 83  
LATITUDE= 40.279047°  
LONGITUDE= -104.961969°

LATITUDE= 40°16'44.571"  
LONGITUDE= -104°57'43.089"

**BOTTOM HOLE LOCATION**  
NAD 83  
LATITUDE= 40.280230°  
LONGITUDE= -104.997039°

LATITUDE= 40°16'48.827"  
LONGITUDE= -104°59'49.342"

N 00°13'16" W 5332.21' (M)

S 89°24'32" W  
2659.57' (C)

S 89°24'32" W  
2643.55' (C)

N 00°21'35" W 5292.04' (M)

26

WELL BORE  
CONTINUES INTO  
SECTION 27

**WILSON RANCH**  
**33C-27HZ**  
SURFACE LOCATION

N 87°48'58" W 9794' GRID  
N 87°28'06" W TRUE  
S 83°57'02" W MAGNETIC

S. 1/4 COR.  
SEC. 26, T4N, R68W  
FOUND 2 1/2" ALUM. CAP  
L.S. NO. 38345

SE. COR.  
SEC. 26, T4N, R68W  
FOUND 3 1/4" ALUM. CAP  
L.S. NO. 12374

SW. COR.  
SEC. 26, T4N, R68W  
FOUND 3 1/4" ALUM. CAP  
L.S. NO. 7242

S 88°47'05" W 2671.03' (M)

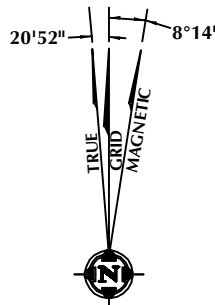
S 89°36'20" W 2638.80' (M)

## CERTIFICATE OF SURVEYOR:

THIS IS TO CERTIFY THAT THE ABOVE PLAT WAS PREPARED FROM FIELD NOTES OF ACTUAL SURVEY MADE BY ME OR UNDER MY SUPERVISION AND THAT THE SAME ARE TRUE AND CORRECT TO THE BEST OF MY KNOWLEDGE AND BELIEF. THIS CERTIFICATE DOES NOT REPRESENT A LAND SURVEY PLAT OR IMPROVEMENT SURVEY PLAT AS DEFINED BY C.S. 38-51-102 AND CANNOT BE RELIED UPON TO DETERMINE OWNERSHIP.

*Benjamin J. Reenders*  
BENJAMIN J. REENDERS  
PROFESSIONAL LAND SURVEYOR  
COLORADO REGISTRATION NUMBER 48305

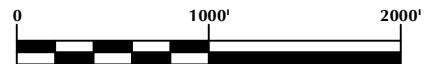
NOTICE:  
ACCORDING TO COLORADO STATE LAW YOU MUST COMMENCE ANY LEGAL ACTION BASED UPON ANY DEFECT IN THIS SURVEY WITHIN THREE YEARS AFTER YOU FIRST DISCOVER SUCH DEFECT. IN NO EVENT MAY ANY ACTION BASED UPON ANY DEFECT IN THIS SURVEY BE COMMENCED MORE THAN TEN YEARS FROM THE DATE ON THE CERTIFICATION SHOWN HEREON.



NOTE:  
MAGNETIC NORTH IS CURRENT AS OF 4/25/2014.  
MAGNETIC NORTH CHANGES WEST 0°08' PER YEAR.

## NOTES:

- ▲ INDICATES FOUND SECTION CORNER
- INDICATES CALCULATED CORNER
- ELEVATION BASED ON NAVD88 (GEOID09)
- BASIS OF BEARING DERIVED FROM COLORADO COORDINATE SYSTEM 1983 NORTH ZONE UNLESS OTHERWISE NOTED.
- ALL MEASURED DISTANCES ARE GRID.  
COMBINED SCALE FACTOR: .99971841
- OPERATOR: ROB WILSON / PDOP = 1.3
- SEE ADDENDUM TO WELL LOCATION CERTIFICATE FOR EXISTING IMPROVEMENTS WITHIN 500' OF THE WELL PAD.
- WELL FOOTAGES ARE MEASURED AT RIGHT ANGLES TO THE SECTION LINES.
- THE BOTTOM OF HOLE BEARS N87°48'58"W 9794' FROM THE SURFACE LOCATION.



## WELL PAD - WILSON RANCH 34N-27HZ

WILSON RANCH 33C-27HZ  
WELL LOCATION CERTIFICATE  
608' FSL & 349' FEL SESE (SURFACE)  
LOCATED IN SECTION 26  
1160' FSL & 460' FWL SWSW (BOTTOM)  
LOCATED IN SECTION 27  
T4N, R68W, 6TH P.M.  
WELD COUNTY, COLORADO

**Kerr-McGee Oil &  
Gas Onshore L.P.**  
1099 18th Street  
Denver, Colorado 80202



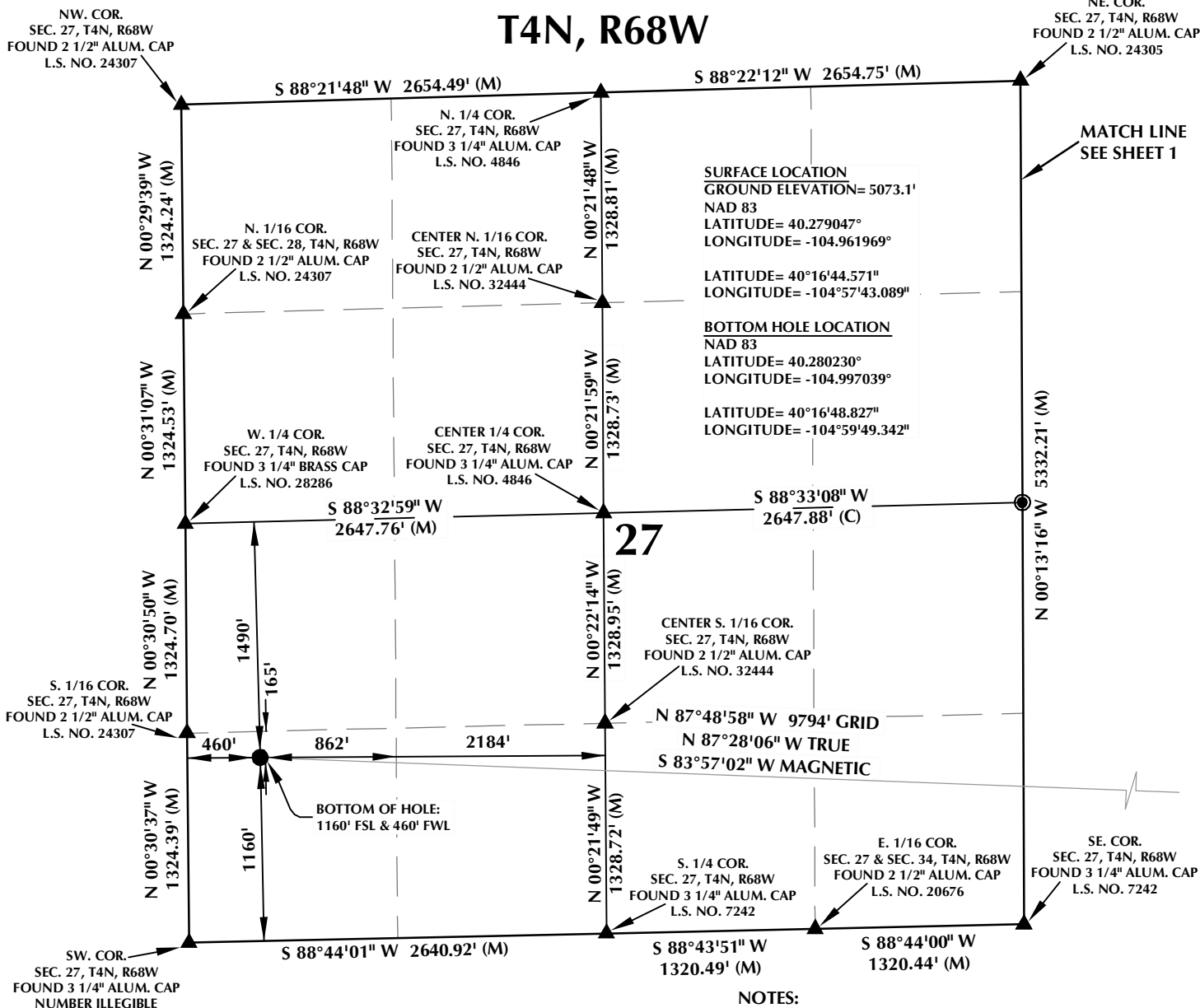
## CONSULTING, LLC

SHERIDAN OFFICE  
2155 North Main Street  
Sheridan, Wyoming 82801  
Phone 307-674-0609

LOVELAND OFFICE  
1635 Foxtrail Drive, Suite 204  
Loveland, Colorado 80538  
Phone 970-776-4331

DRAFTED BY:	LMO	CHECKED BY:	BJR	SHEET NO:
DATE DRAFTED:	5/1/14	DATE SURVEYED:	4/23/14	1
REVISED:		FILE NAME:	14-19	1 OF 2

# T4N, R68W

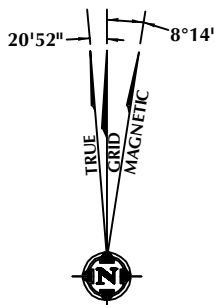


## CERTIFICATE OF SURVEYOR:

THIS IS TO CERTIFY THAT THE ABOVE PLAT WAS PREPARED FROM FIELD NOTES OF ACTUAL SURVEY MADE BY ME OR UNDER MY SUPERVISION AND THAT THE SAME ARE TRUE AND CORRECT TO THE BEST OF MY KNOWLEDGE AND BELIEF. THIS CERTIFICATE DOES NOT REPRESENT A LAND SURVEY PLAT OR IMPROVEMENT SURVEY PLAT AS DEFINED BY C.S. 38-51-102 AND CANNOT BE RELIED UPON TO DETERMINE OWNERSHIP.

*Benjamin J. Reenders*  
 BENJAMIN J. REENDERS  
 PROFESSIONAL LAND SURVEYOR  
 COLORADO REGISTRATION NUMBER 48305  
 8/1/14

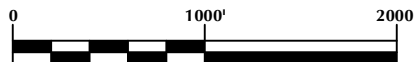
NOTICE:  
 ACCORDING TO COLORADO STATE LAW YOU MUST COMMENCE ANY LEGAL ACTION BASED UPON ANY DEFECT IN THIS SURVEY WITHIN THREE YEARS AFTER YOU FIRST DISCOVER SUCH DEFECT. IN NO EVENT MAY ANY ACTION BASED UPON ANY DEFECT IN THIS SURVEY BE COMMENCED MORE THAN TEN YEARS FROM THE DATE ON THE CERTIFICATION SHOWN HEREON.



NOTE:  
 MAGNETIC NORTH IS CURRENT AS OF 4/25/2014.  
 MAGNETIC NORTH CHANGES WEST 0°08" PER YEAR.

## NOTES:

- ▲ INDICATES FOUND SECTION CORNER
- INDICATES CALCULATED CORNER
- ELEVATION BASED ON NAVD88 (GEOID09)
- BASIS OF BEARING DERIVED FROM COLORADO COORDINATE SYSTEM 1983 NORTH ZONE UNLESS OTHERWISE NOTED.
- ALL MEASURED DISTANCES ARE GRID. COMBINED SCALE FACTOR: .99971841
- OPERATOR: ROB WILSON / PDOP = 1.3
- SEE ADDENDUM TO WELL LOCATION CERTIFICATE FOR EXISTING IMPROVEMENTS WITHIN 500' OF THE WELL PAD.
- WELL FOOTAGES ARE MEASURED AT RIGHT ANGLES TO THE SECTION LINES.
- THE BOTTOM OF HOLE BEARS N87°48'58"W 9794' FROM THE SURFACE LOCATION.



SCALE: 1" = 1000'

## WELL PAD - WILSON RANCH 34N-27HZ

WILSON RANCH 33C-27HZ  
 WELL LOCATION CERTIFICATE  
 608' FSL & 349' FEL SESE (SURFACE)  
 LOCATED IN SECTION 26  
 1160' FSL & 460' FWL SWSW (BOTTOM)  
 LOCATED IN SECTION 27  
 T4N, R68W, 6TH P.M.  
 WELD COUNTY, COLORADO

**Kerr-McGee Oil &  
 Gas Onshore L.P.**  
 1099 18th Street  
 Denver, Colorado 80202



## CONSULTING, LLC

SHERIDAN OFFICE  
 2155 North Main Street  
 Sheridan, Wyoming 82801  
 Phone 307-674-0609

LOVELAND OFFICE  
 1635 Foxtrail Drive, Suite 204  
 Loveland, Colorado 80538  
 Phone 970-776-4331

DRAFTED BY:	LMO	CHECKED BY:	BJR	SHEET NO:
DATE DRAFTED:	5/1/14	DATE SURVEYED:	4/23/14	2
REVISED:		FILE NAME:	14-19	2 OF 2