

Radial Cement Bond
Gamma Ray
C.C.L

Company KERR-McGEE OIL & GAS ONSHORE LP
Well CAMENISCH 16-33
Field WATTENBERG
County WELD
State COLORADO

Company KERR-McGEE OIL & GAS ONSHORE LP
Well CAMENISCH 16-33
Field WATTENBERG
County WELD State COLORADO

Location: API # : 05-123-20605
LAT: 40.26360 LONG:-104.88840
SE SE
SEC 33 TWP 4N RGE 67W
Permanent Datum GL Elevation 4823
Log Measured From KB 14
Drilling Measured From KB
Other Services
K.B. 4837
D.F. 4836
G.L. 4823

Date 11-18-2014

Run Number ONE
Depth Driller
Depth Logger 2000
Bottom Logged Interval 2000
Top Log Interval SURFACE
Open Hole Size
Type Fluid WATER
Density / Viscosity 1.0
Max. Recorded Temp. 78
Estimated Cement Top 570
Time Well Ready
Time Logger on Bottom
Equipment Number 3812
Location GREELEY
Recorded By J.J.BULLARD
Witnessed By DOLEMEDA

Borehole Record
Run Number Bit From To Size Weight From To
ONE
TWO

Casing Record
Surface String 8.875 Wgt/Ft Top Bottom
Prot. String
Production String
Liner

<<< Fold Here >>>

All interpretations are opinions based on inferences from electrical or other measurements and we cannot and do not guarantee the accuracy or correctness of any interpretation, and we shall not, except in the case of gross or willful negligence on our part, be liable or responsible for any loss, costs, damages, or expenses incurred or sustained by anyone resulting from any interpretation made by any of our officers, agents or employees. These interpretations are also subject to our general terms and conditions set out in our current Price Schedule.

Comments

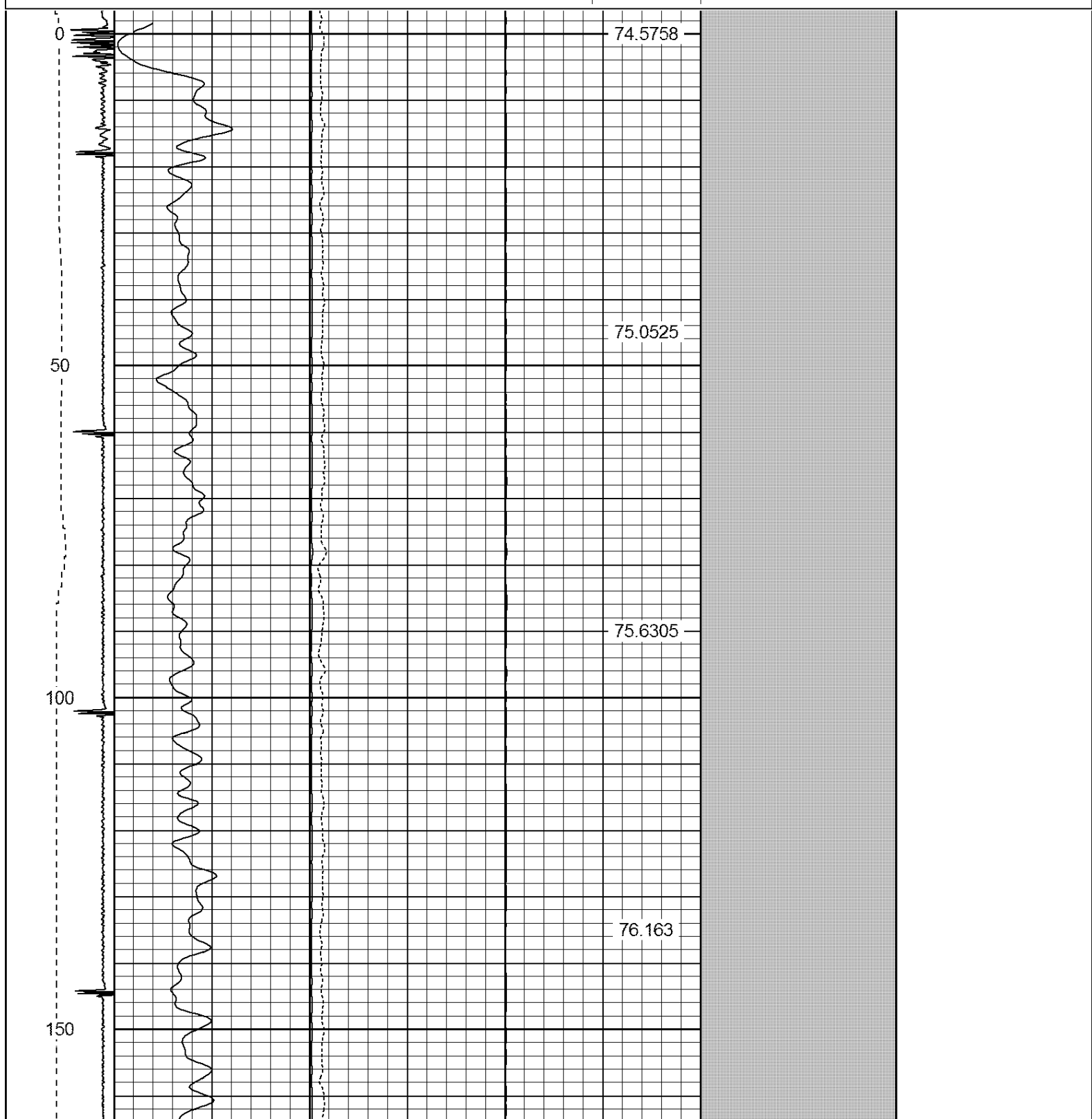
THANK YOU FOR USING WARRIOR ENERGY SERVICES!!!!

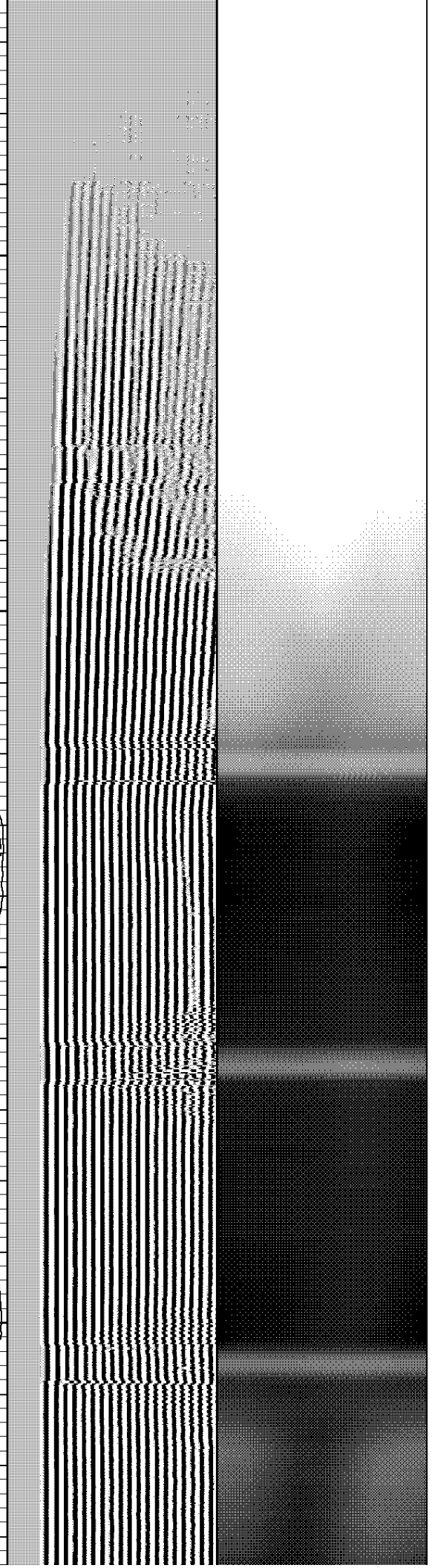
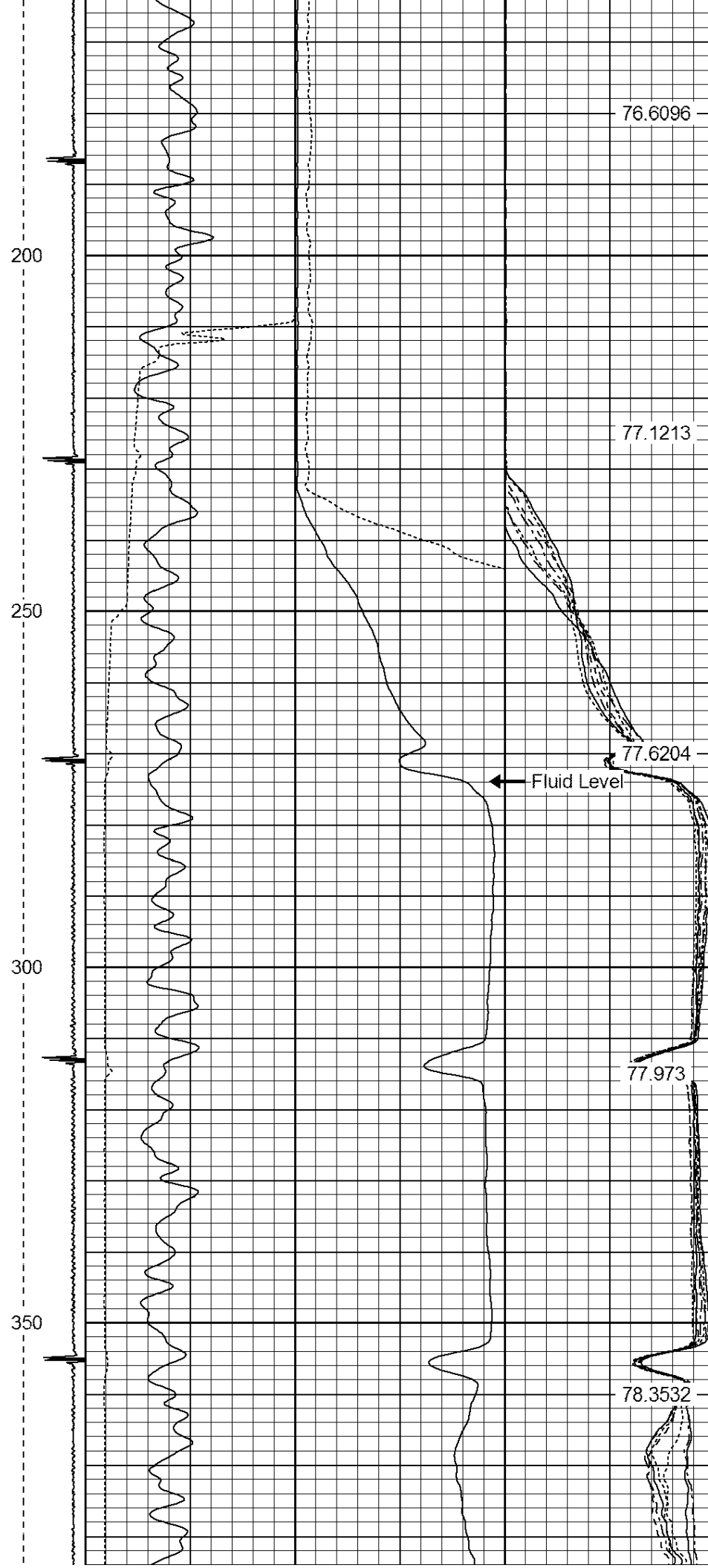
Sensor	Offset (ft)	Schematic	Description	Len (ft)	OD (in)	Wt (lb)
CENT	19.08					

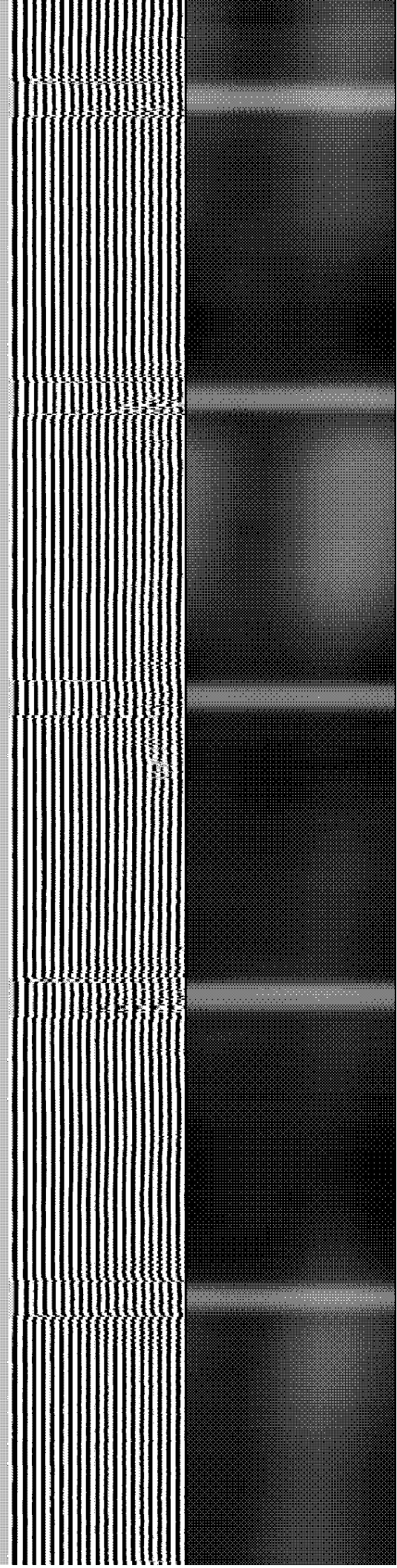
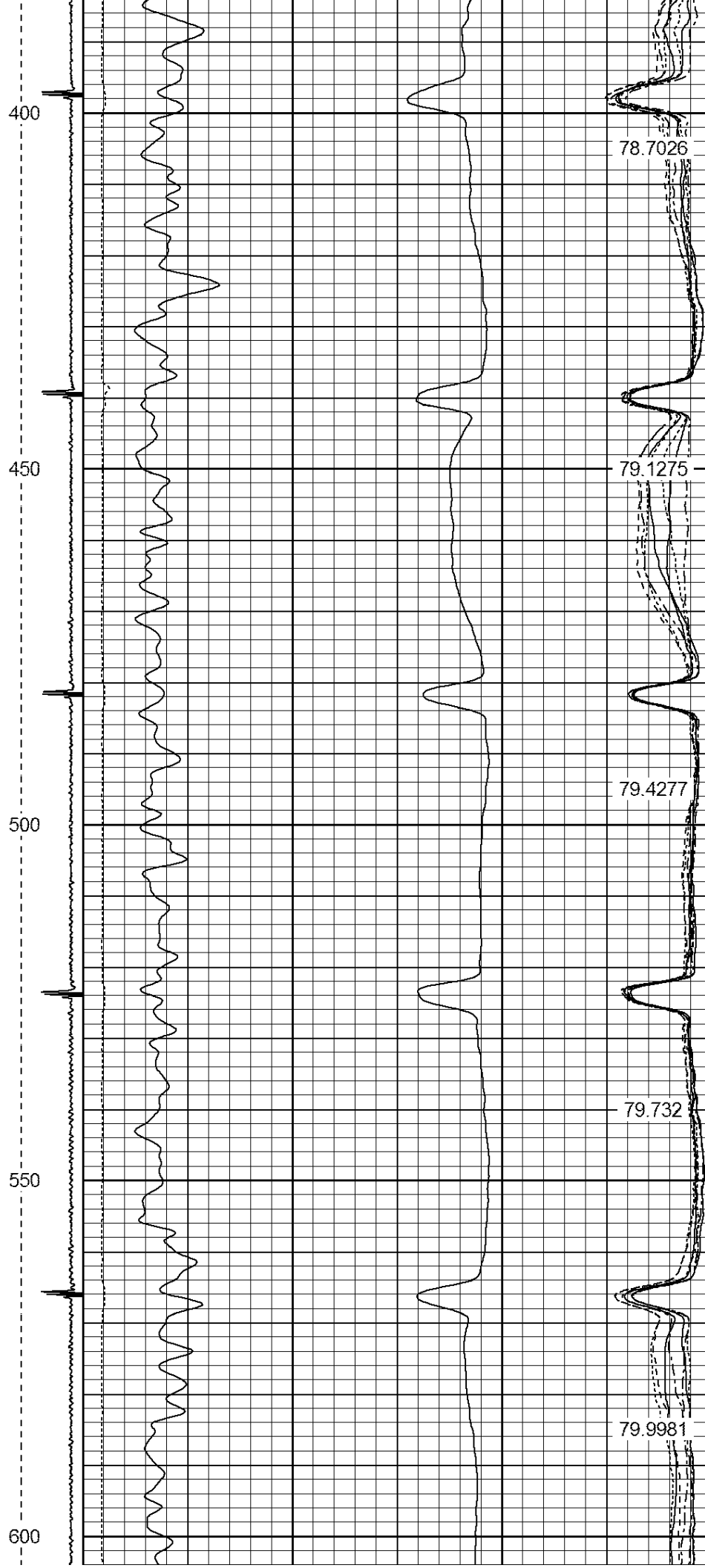
			PTS275	2.83	2.75	
HEADVOLT	16.25					
RBT	16.25					
IntTemp	14.83					
WVF3FT	11.58					
WVFCAL	11.58					
WVFS1	11.58					
WVFS2	11.58					
WVFS3	11.58					
WVFS4	11.58					
WVFS5	11.58					
WVFS6	11.58					
WVFS7	11.58					
WVFS8	11.58					
WVF5FT	10.58					
CNLSC	6.00					
CNSSC	5.17					
GR	4.33					
CCL	3.64					
GR	0.90					
Dataset: camenisch 16-33.db: field/well/run1/pass4						
Total Length: 19.08 ft						
Total Weight: 160.00 lb						
O.D. 2.75 in						

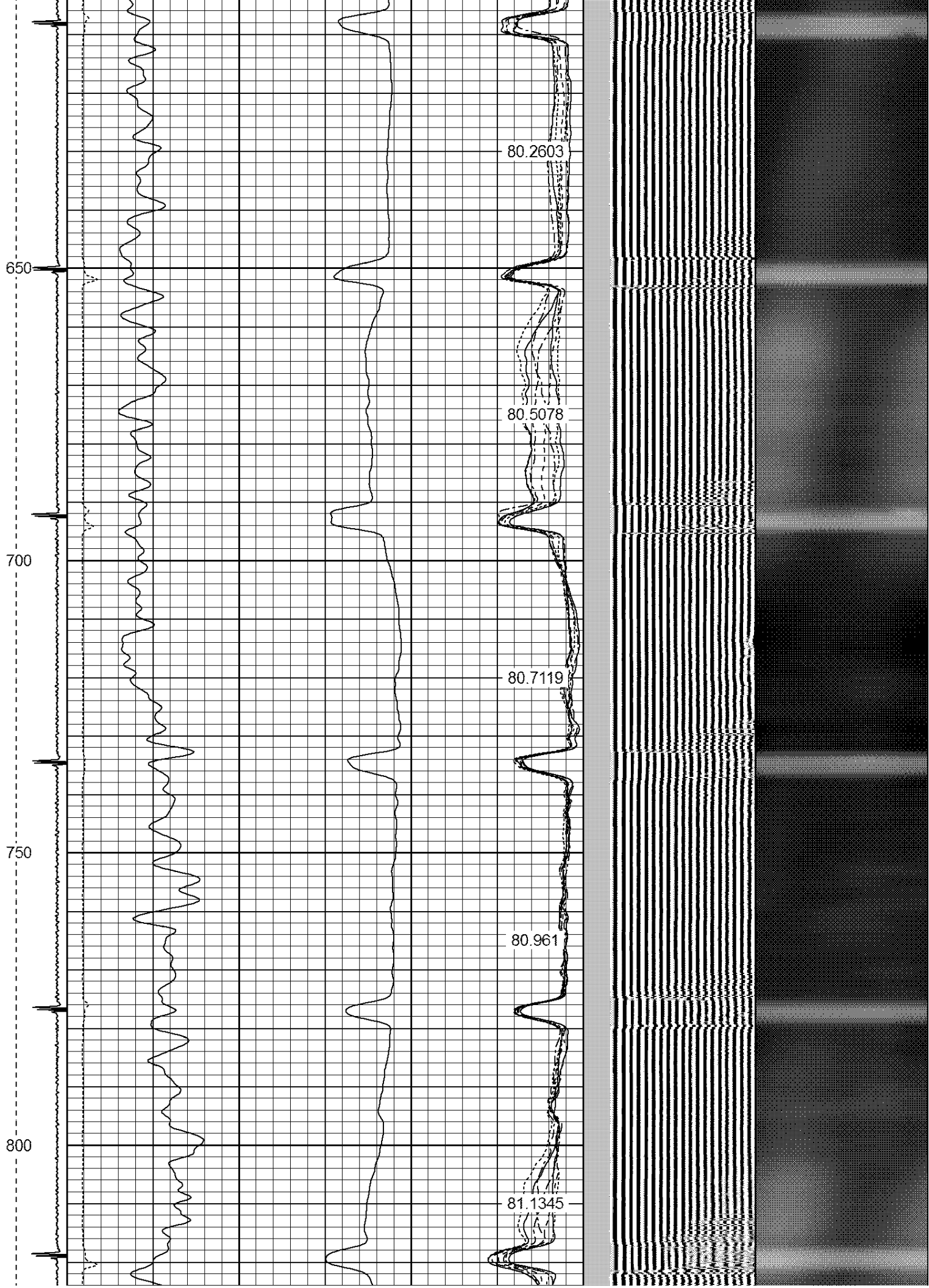
Database File:	camenisch 16-33.db
Dataset Pathname:	pass4
Presentation Format:	ips_rbt

-9	CCL	1	200	TT (usec)	800	0	AMP (mV)	100	0	AMPS1	100	200	VDL	1200	1	Cement Map	8
LSPD			0	GR (cps)	200	0	AMPx5 (mV)	20	0	AMPS2	100				1		100
(ft/min)			200	GR (cps)	400				0	AMPS4	100						
0	250								0	AMPS5	100						
									0	AMPS6	100						
									0	AMPS7	100						
									0	AMPS8	100						
										IntTemp							
										(degF)							









850

900

950

1000

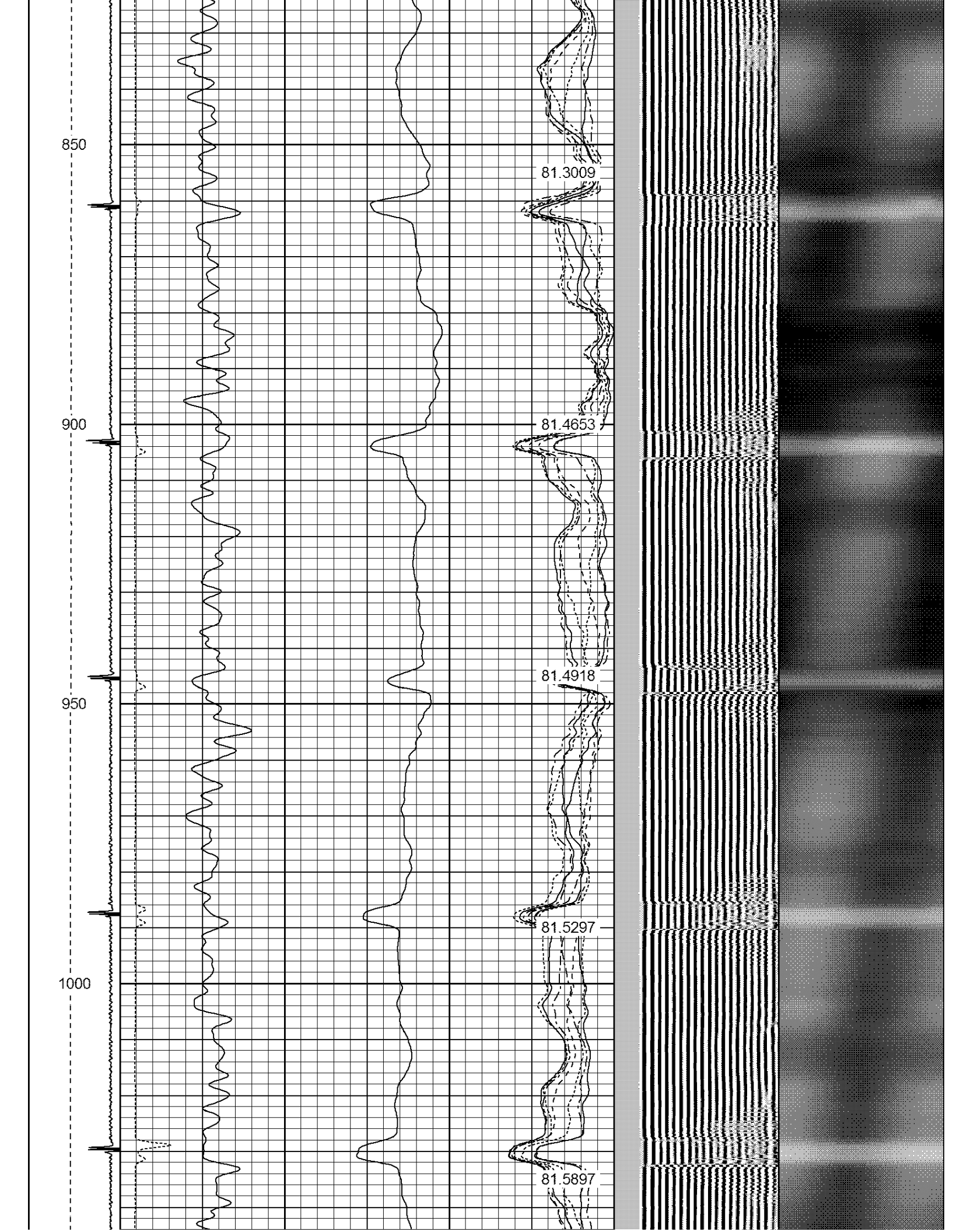
81.3009

81.4653

81.4918

81.5297

81.5897



1050

1100

1150

1200

1250

81.6067

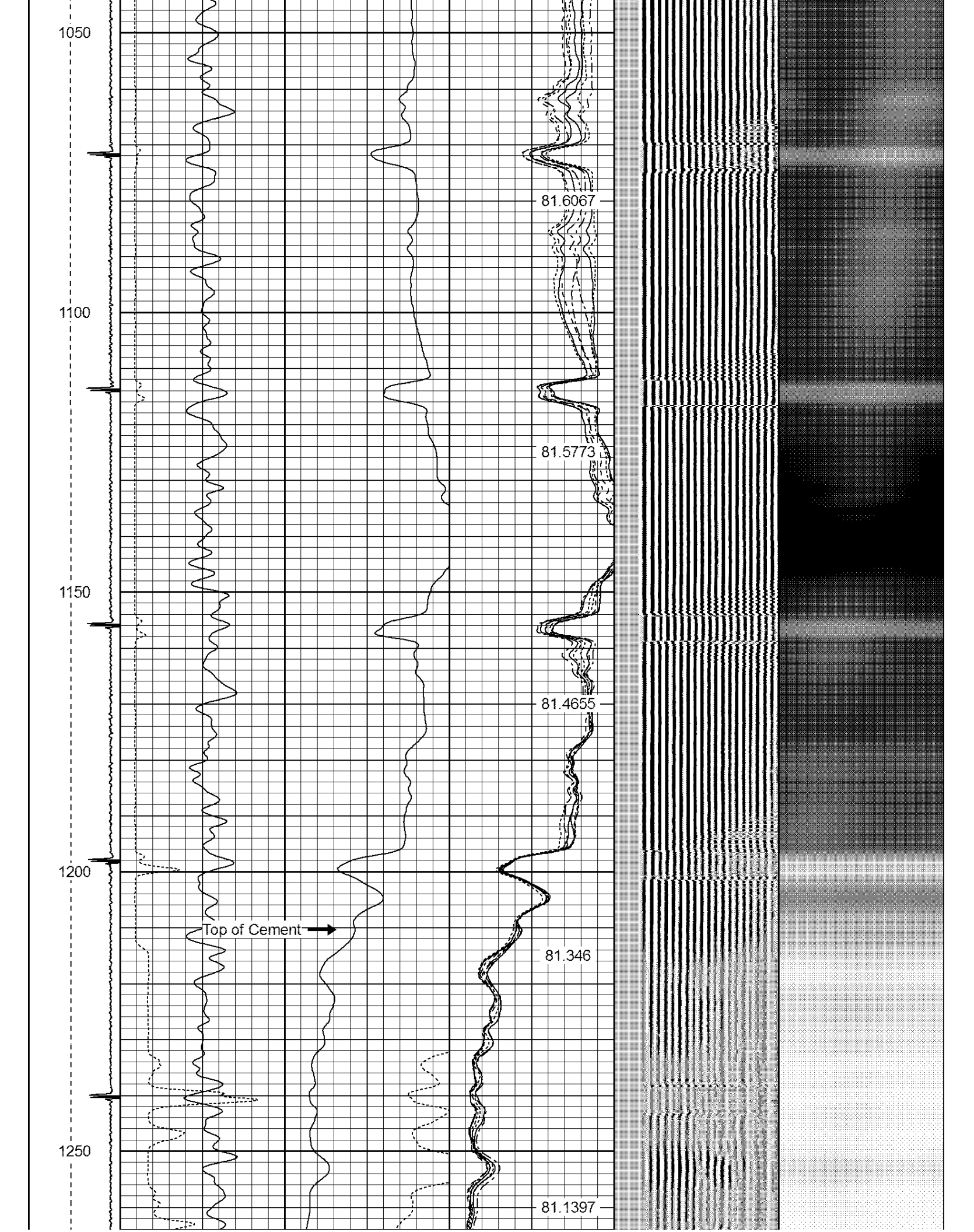
81.5773

81.4655

81.346

81.1397

Top of Cement →



1300

1350

1400

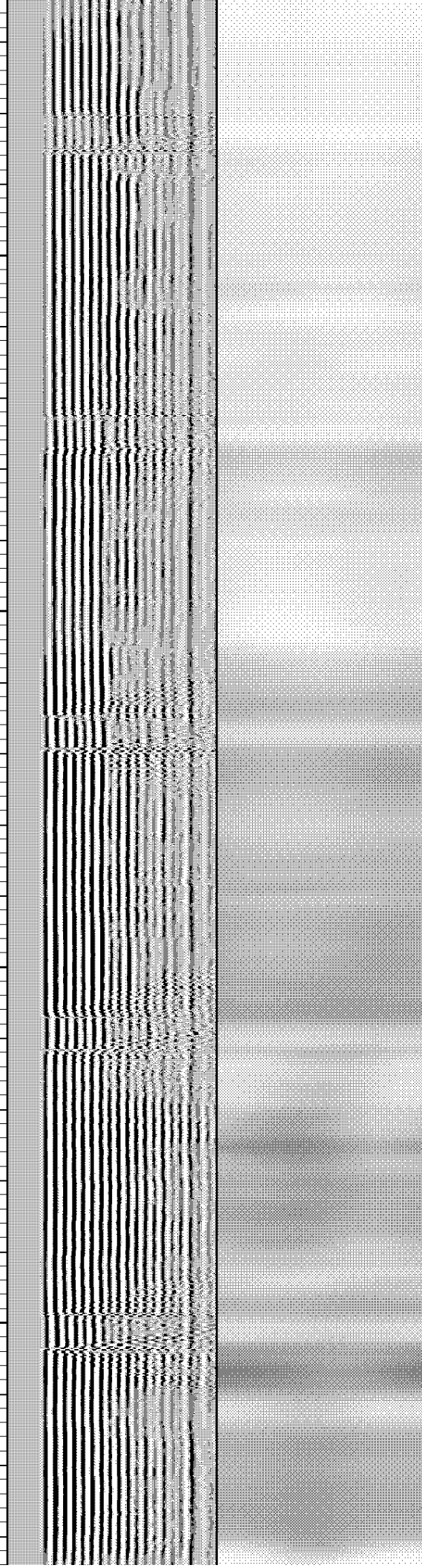
1450

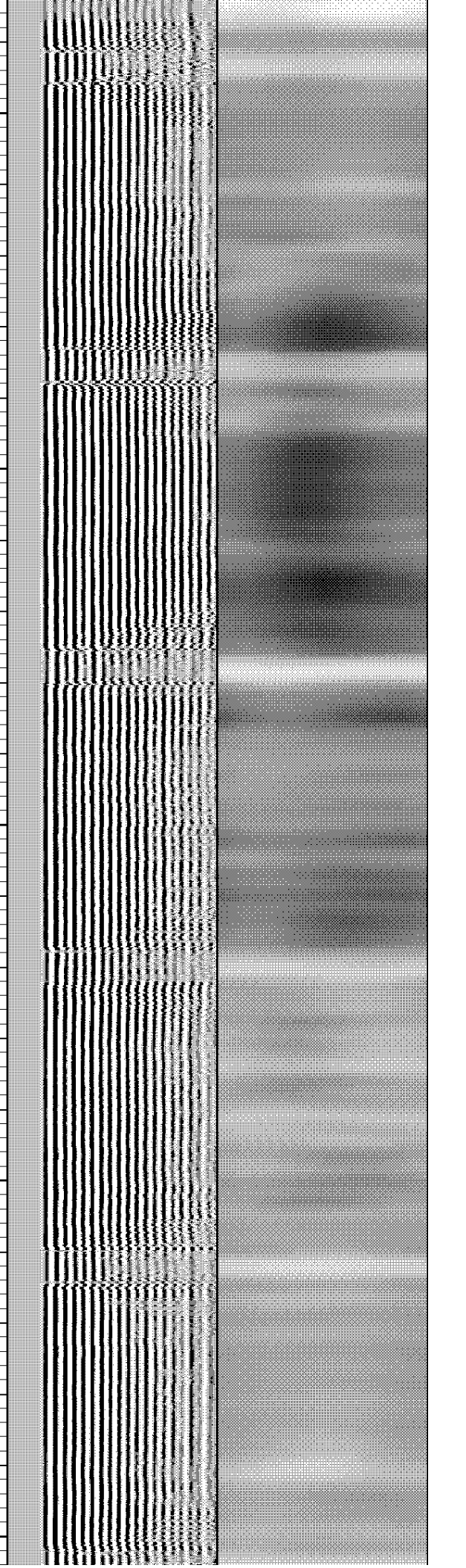
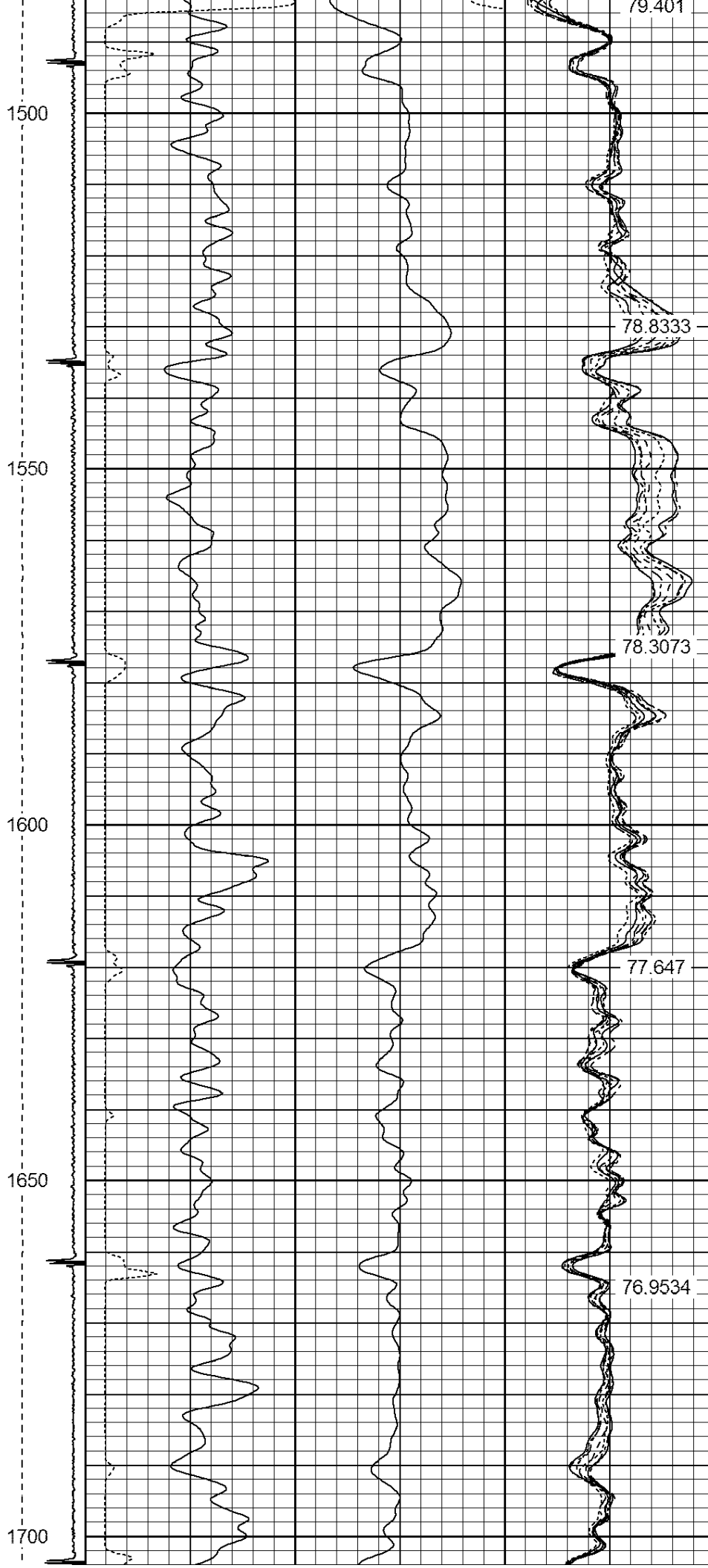
80.9407

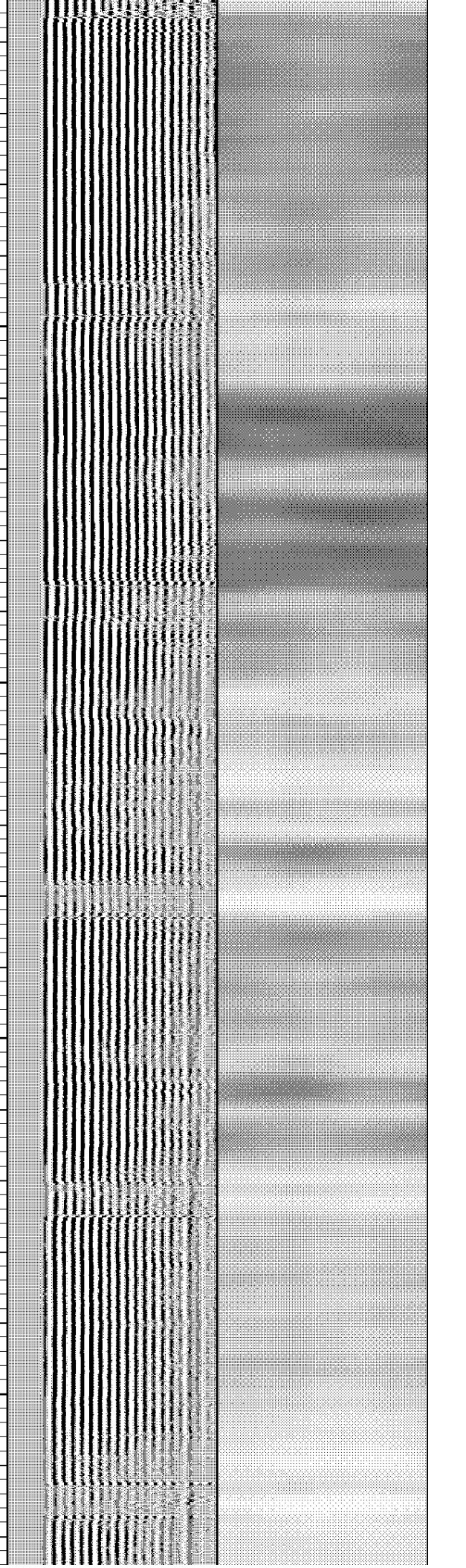
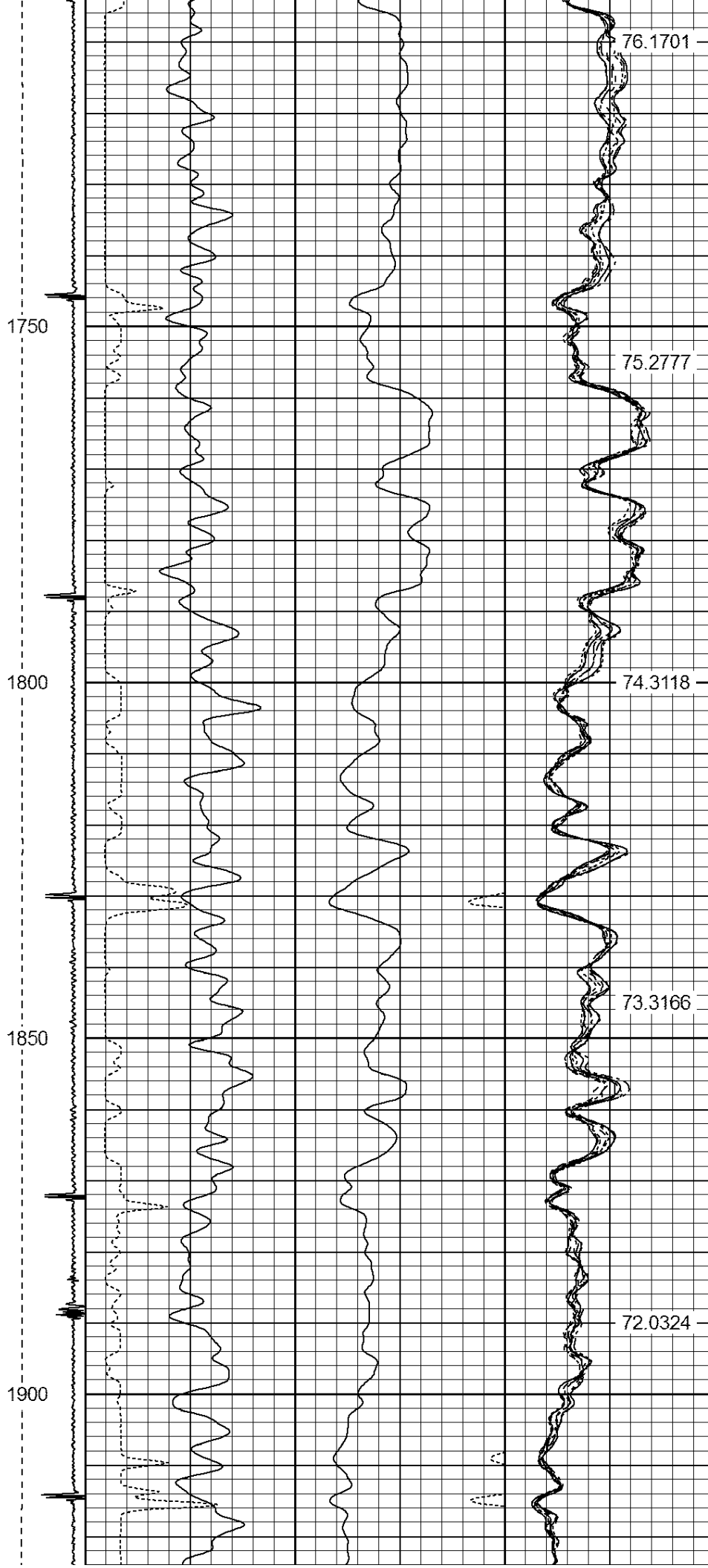
80.6383

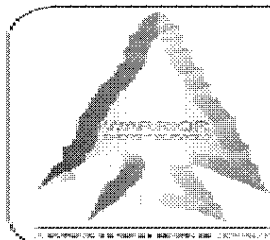
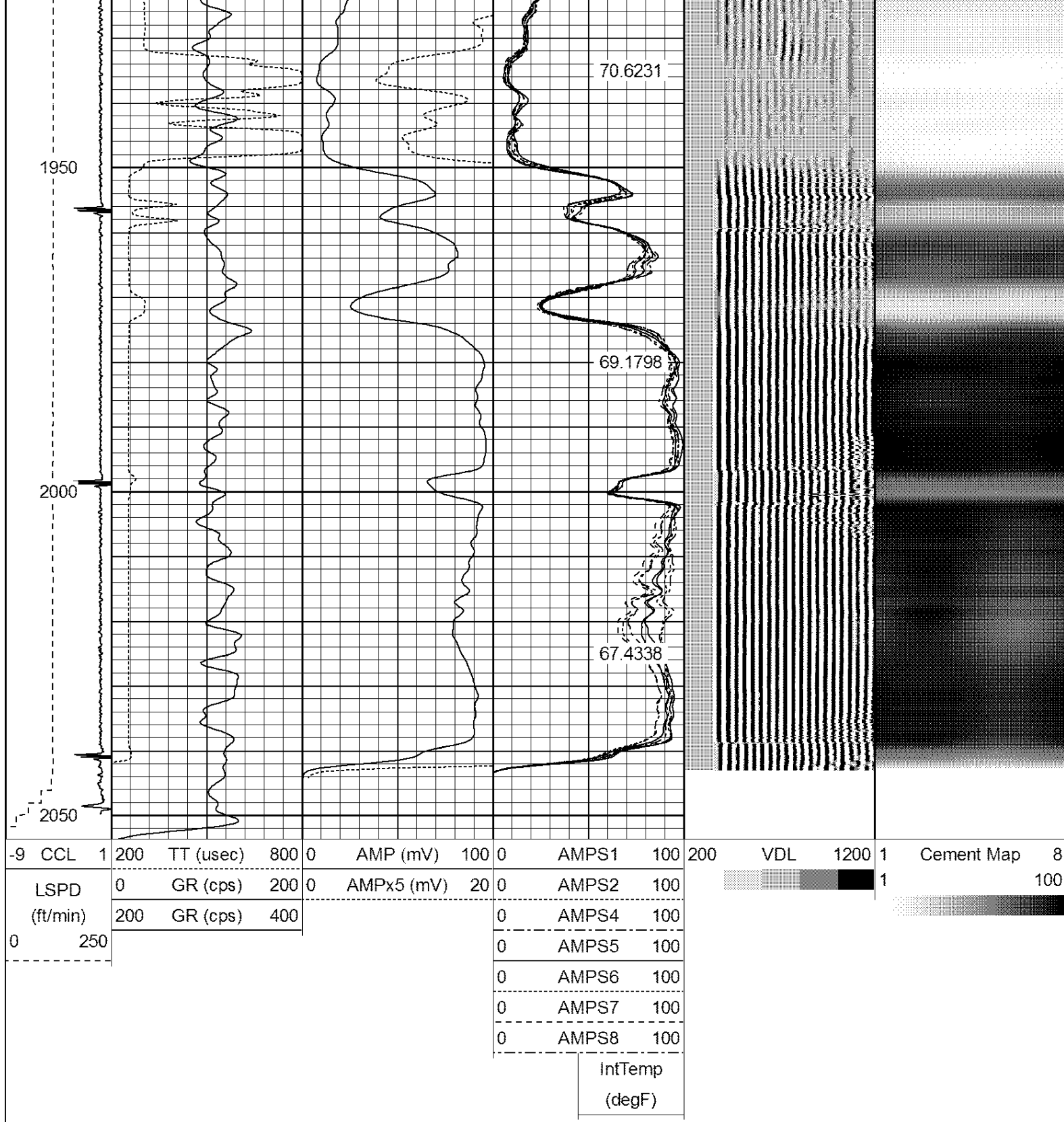
80.3138

79.8552









WARRIOR
ENERGY SERVICES

Company KERR-McGEE OIL & GAS ONSHORE LP

Well CAMENISCH 16-33

Field WATTENBERG

County WELD

State COLORADO