



RADIAL CEMENT BOND LOG  
GAMMA RAY  
CCL

Company Kerr McGee Oil & Gas  
Well CAMENISCH 16-33  
Field Wattenberg  
County Weld State CO

Location: API # : 05-123-20605  
SHL: 650' FSL 650' FEL SE/SE  
LAT: 40.26360 LONG: -104.88840  
SEC 33 TWP 4N RGE 67W  
Permanent Datum GL Elevation 4823'  
Log Measured From KB: 14'  
Drilling Measured From KB  
Other Services  
K.B. 4837'  
D.F. 4836'  
G.L. 4823'

Company Kerr McGee Oil & Gas  
Well CAMENISCH 16-33  
Field Wattenberg  
County Weld  
State CO

Date	11-2-2014
Run Number	ONE
Depth Driller	7342'
Depth Logger	4808'
Bottom Logged Interval	4805'
Top Log Interval	Surface
Open Hole Size	7 7/8
Type Fluid	WATER
Density / Viscosity	1.0
Max. Recorded Temp.	168
Estimated Cement Top	3488'
Time Well Ready	NA
Time Logger on Bottom	NA
Equipment Number	7770
Location	GREELEY
Recorded By	A.STEERMAN
Witnessed By	DOLEMEDA

Borehole Record				Tubing Record			
Run Number	Bit	From	To	Size	Weight	From	To
Casing Record		Size		Wgt/Ft	Top		Bottom
Surface String							
Prot. String							
Production String							
Liner							

<<< Fold Here >>>

All interpretations are opinions based on inferences from electrical or other measurements and we cannot and do not guarantee the accuracy or correctness of any interpretation, and we shall not, except in the case of gross or willful negligence on our part, be liable or responsible for any loss, costs, damages, or expenses incurred or sustained by anyone resulting from any interpretation made by any of our officers, agents or employees. These interpretations are also subject to our general terms and conditions set out in our current Price Schedule.

Comments

NOT CORROLATED  
RAN CBL TO VERIFY CEMENT.

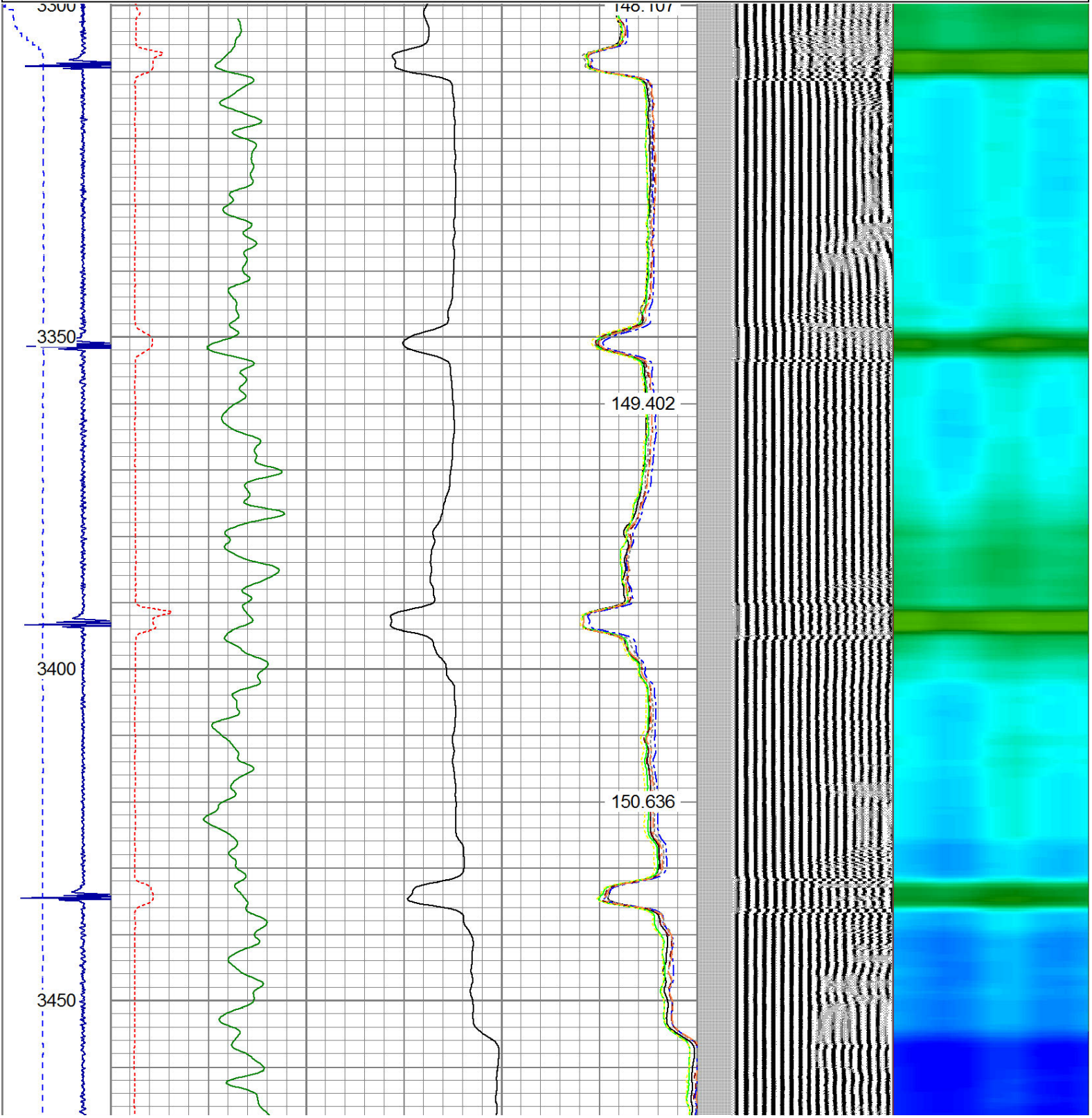
THANK YOU FOR USING WARRIOR ENERGY!

Sensor	Offset (ft)	Schematic	Description	Len (ft)	OD (in)	Wt (lb)

			CENT #2 -Probe (PTS_MONO)	2.75	2.75	35.00
HEADVOLT	16.00					
IntTemp	14.58					
WVF3FT	11.33		RBT-Probe (Base)	8.92	2.75	90.00
WVFCAL	11.33		Probe Radii Bond Tool with Digital Telemetry			
WVFS1	11.33					
WVFS2	11.33					
WVFS3	11.33					
WVFS4	11.33					
WVFS5	11.33					
WVFS6	11.33					
WVFS7	11.33					
WVFS8	11.33					
WVF5FT	10.33					
			CENT-Probe (PT_MONO2)	2.75	2.75	35.00
CCL	3.64					
			GR-Probe (275)	4.33	2.75	30.00
			Probe 2.75"			
GR	0.90					
Dataset: camenisch 16-33.db: field/well/run1/pass40 Total Length: 18.75 ft Total Weight: 190.00 lb O.D. 2.75 in						

Dataset Creation: Mon Nov 03 11:02:29 2014 by Log Std Casedhole 09061  
Charted by: Depth in Feet scaled 1:240

-9	CCL	3	200	TT (usec)	800	0	AMP (mV)	100	0	AMPS1	100	200	VDL	1200	1	Cement Map	8
LSPD			0	GR (GAPI)	200	0	AMPx5 (mV)	20	0	AMPS2	100				1		100
(ft/min)			200	GR (GAPI)	400				0	AMPS4	100						
0									0	AMPS5	100						
									0	AMPS6	100						
									0	AMPS7	100						
									0	AMPS8	100						
										IntTemp							
										(degF)							





Top of Cement →

151.801

153.166

154.383

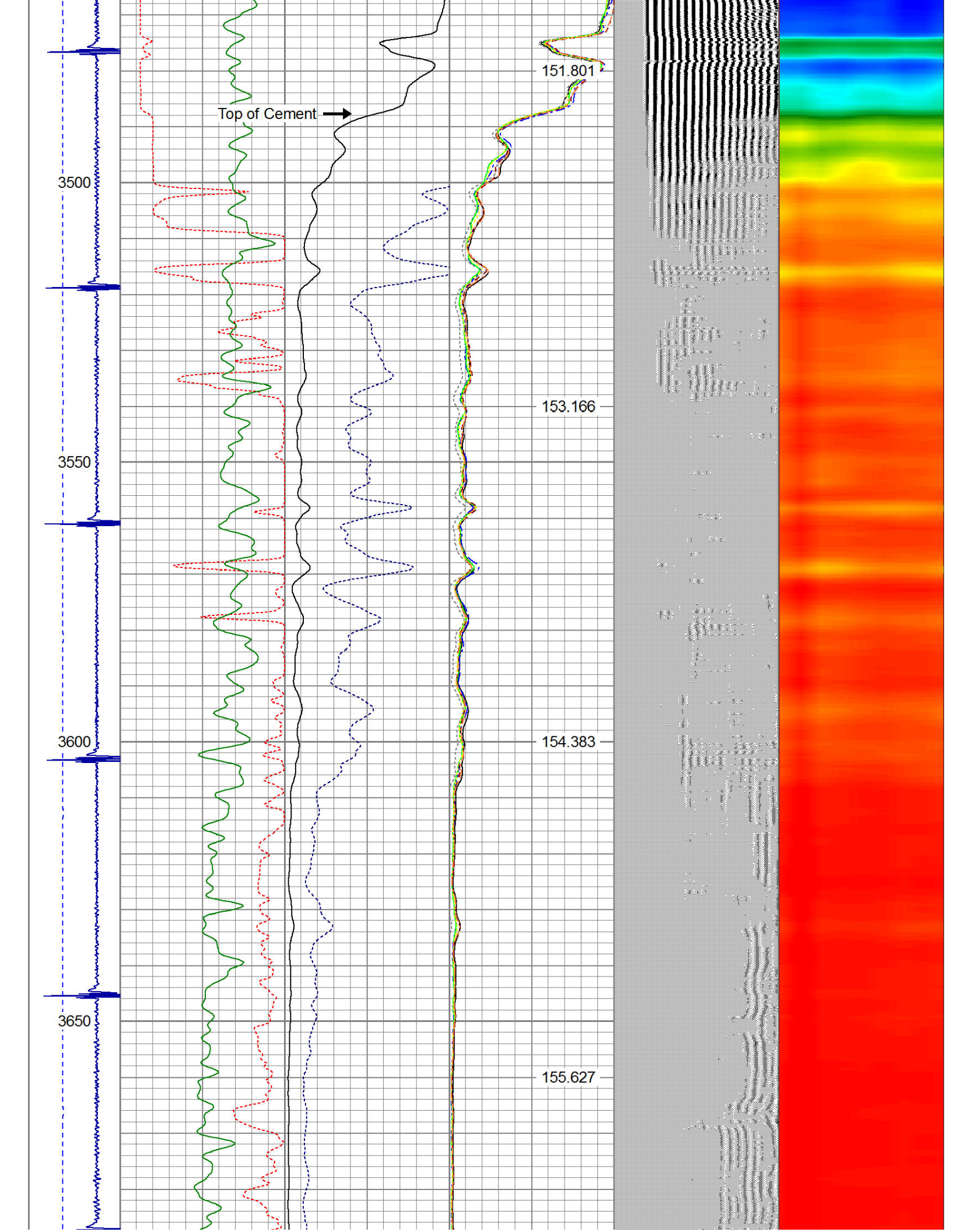
155.627

3500

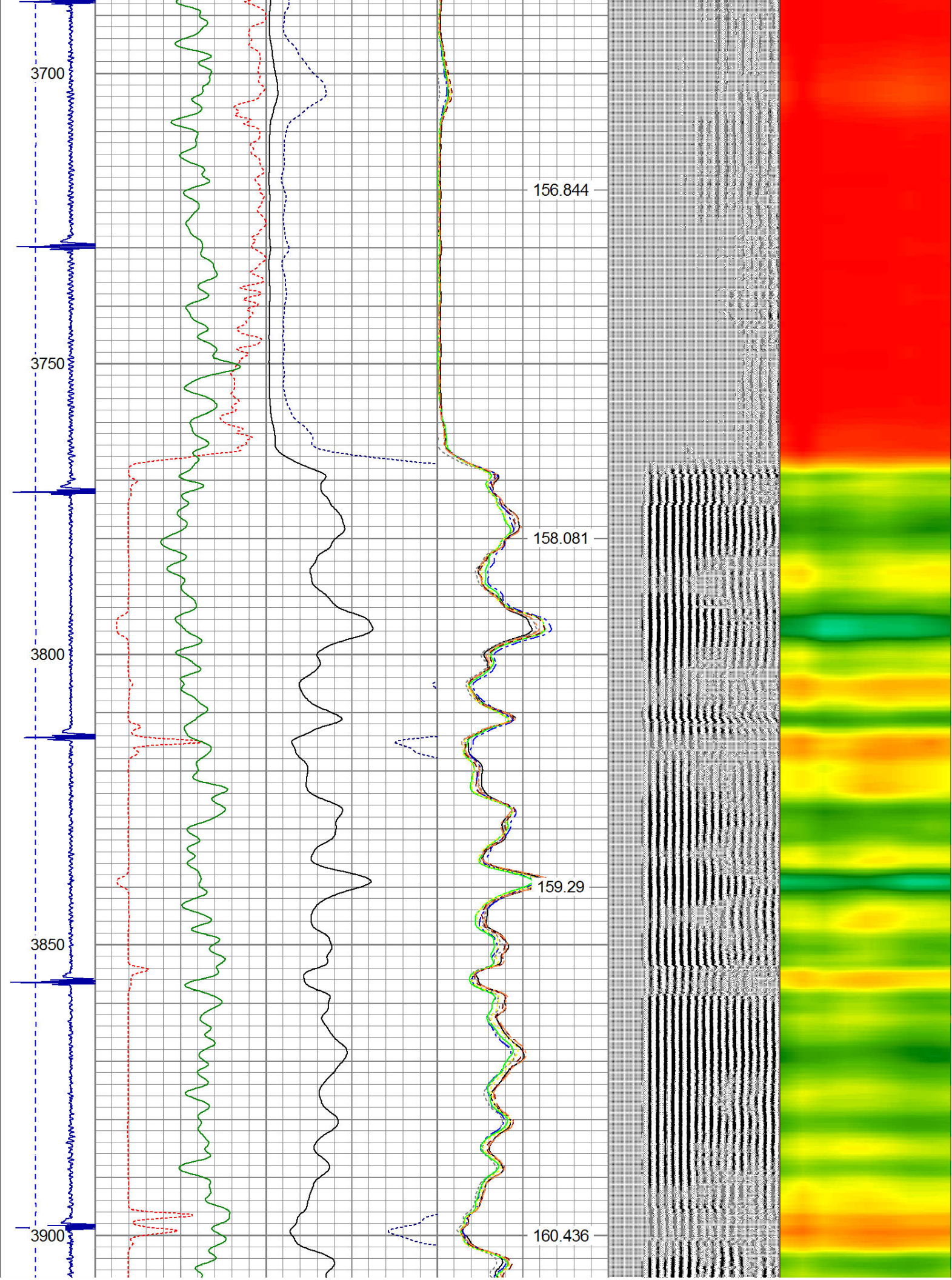
3550

3600

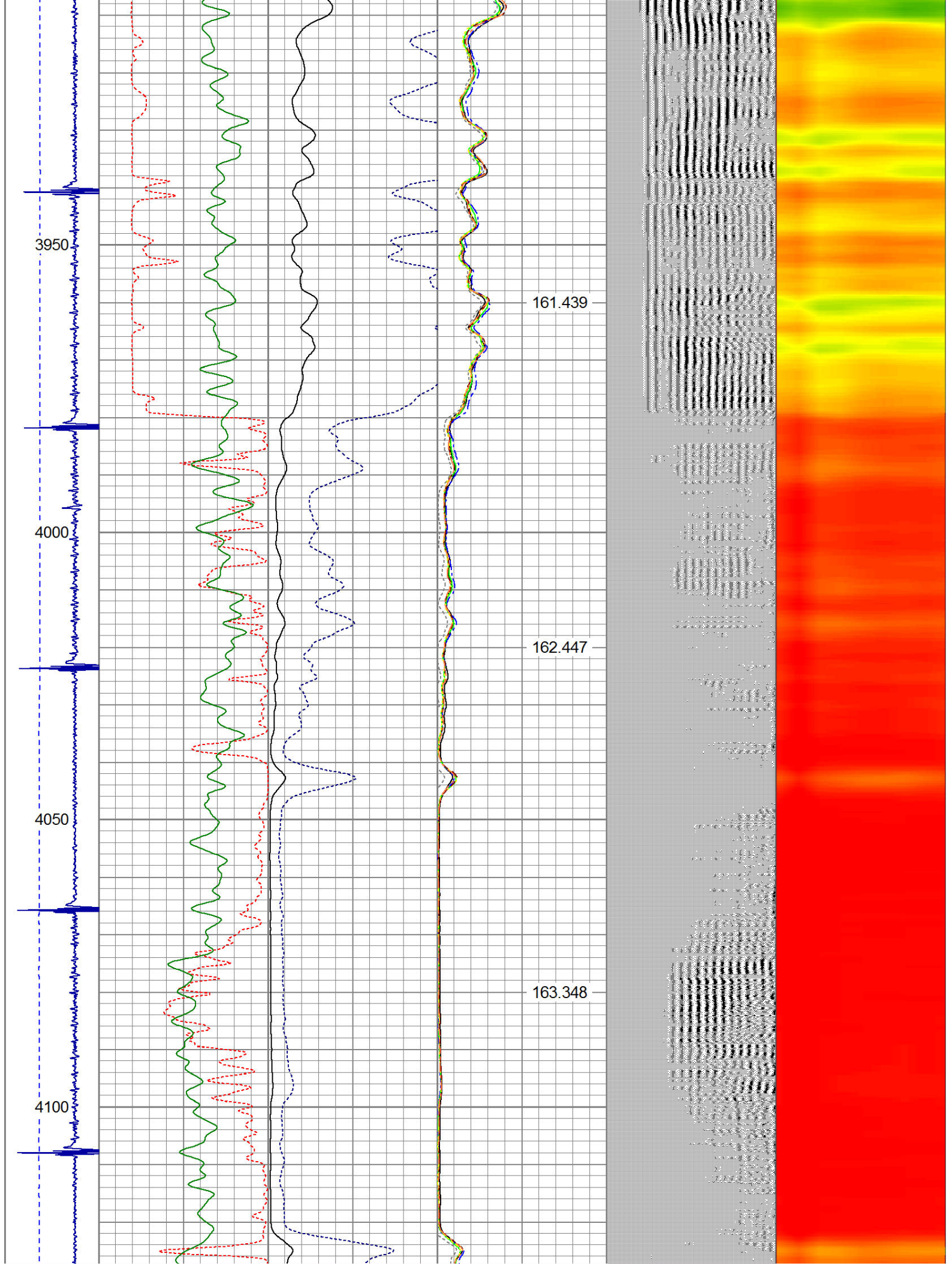
3650



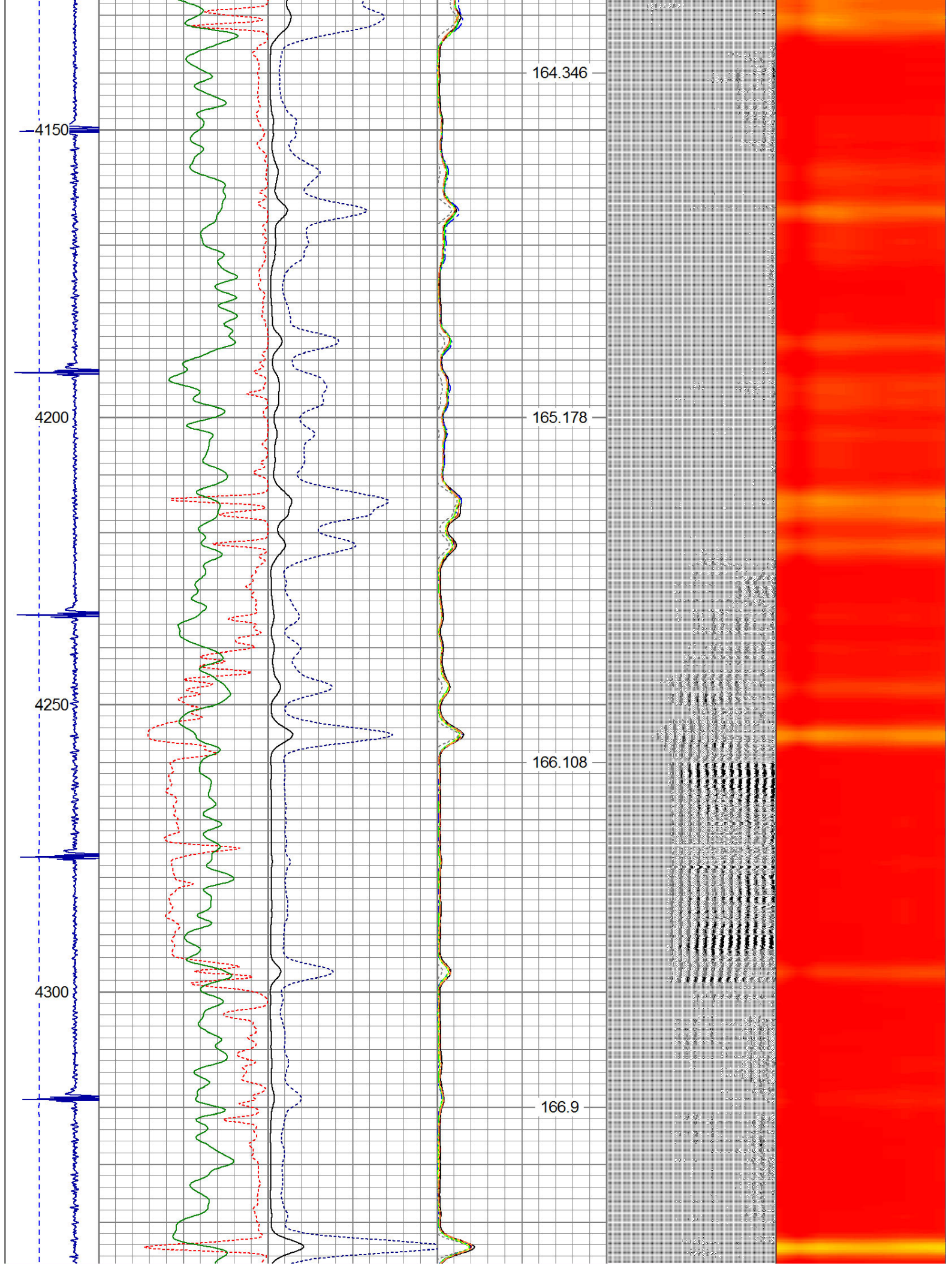




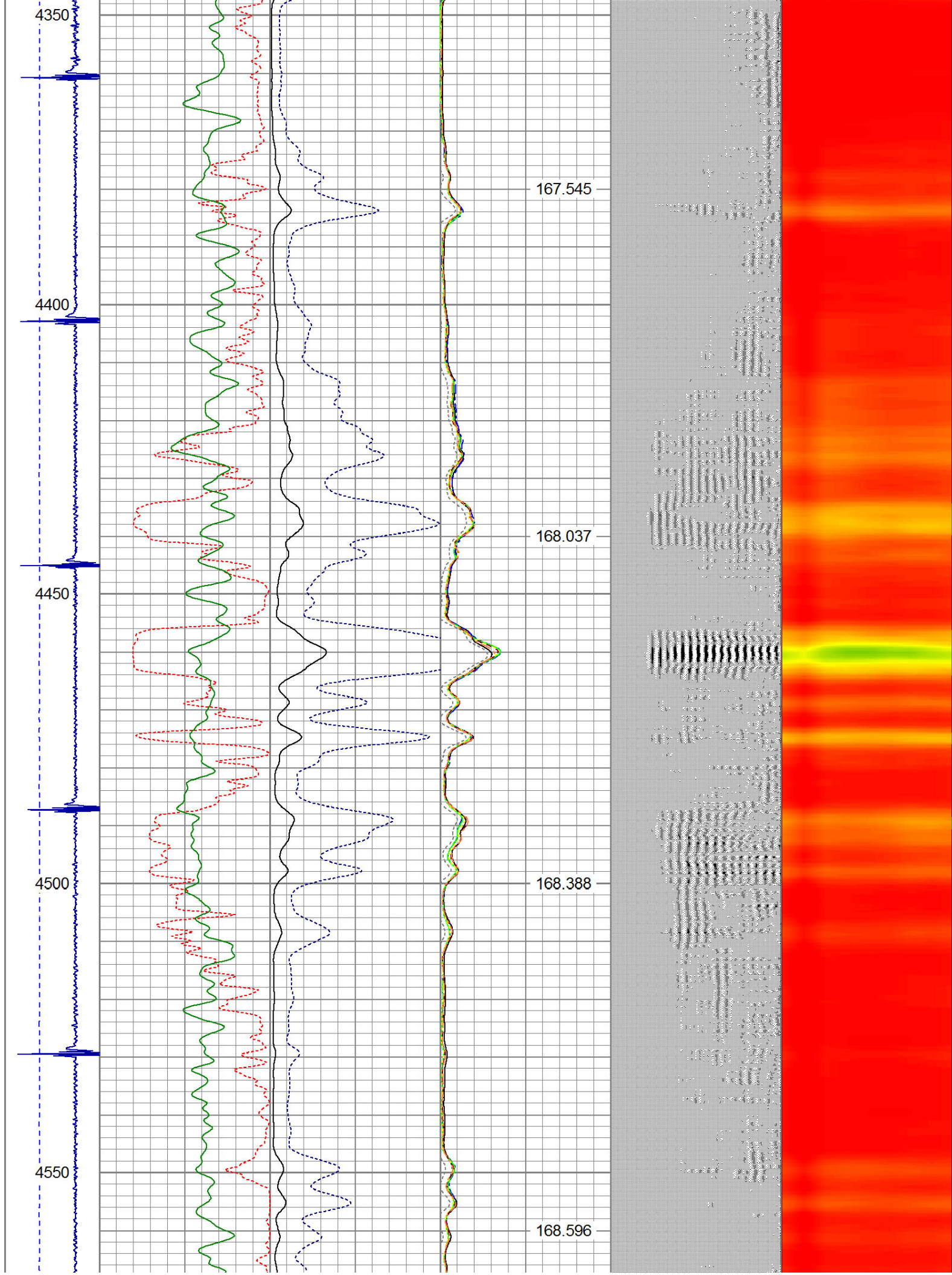




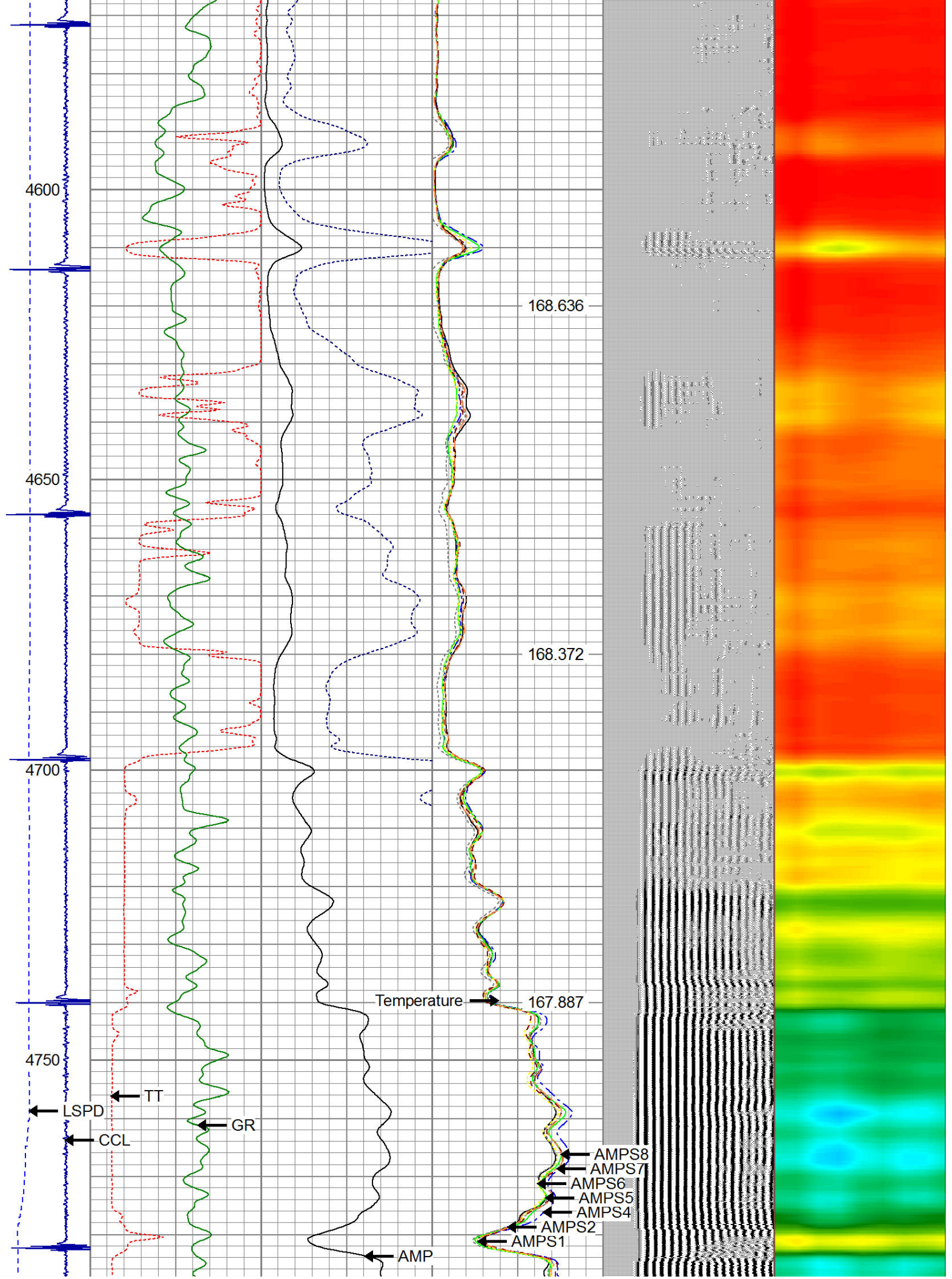




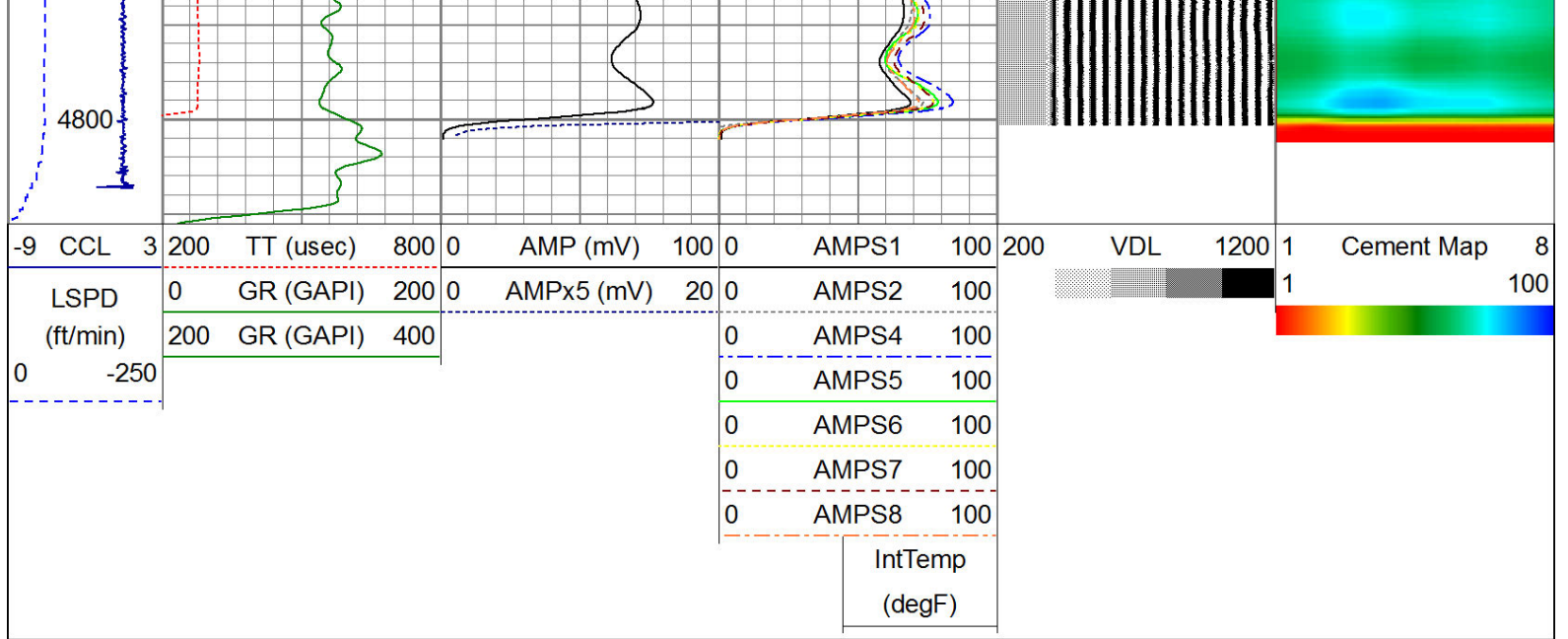












**WARRIOR**  
ENERGY SERVICES

Company Kerr McGee Oil & Gas  
Well CAMENISCH 16-33  
Field Wattenberg  
County Weld  
State CO