



WELL NO.: M.B. LARSON A-1AX  
(A0611)  
FIELD . . . : RANGELY, CO.

## SURVEY DATA

## REMARKS

**RUN NO. 4**

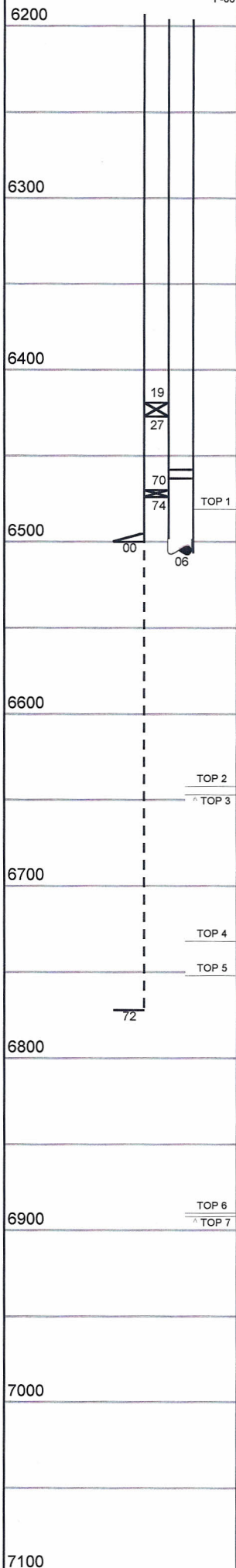
SURVEY TYPE . . .	T-S-T	SURFACE TEMP . .	115.7 F
DATE . . . . .	12/3/2014	BHT . . . . .	118.1 F
METERED RATE . .	3250 B/D	TBG PRESSURE . .	1220 PSI
MEASURED RATE . .	4940 B/D	CSG PRESSURE . .	0 PSI
DESIRED RATE . .	N/A	PICK-UP . . . . .	6719'
SERVICE CO . . .	PLS	INJ. FLUID . . . .	H2O

R/A TRACER INDICATES PACKERS AND CASING  
SHOE OK.  
RECORDED BY: RORY ANDREWS  
  
12/3/14, RAN 1.75" G/R TO 6713'±; UNABLE TO GET  
ANY DEEPER.

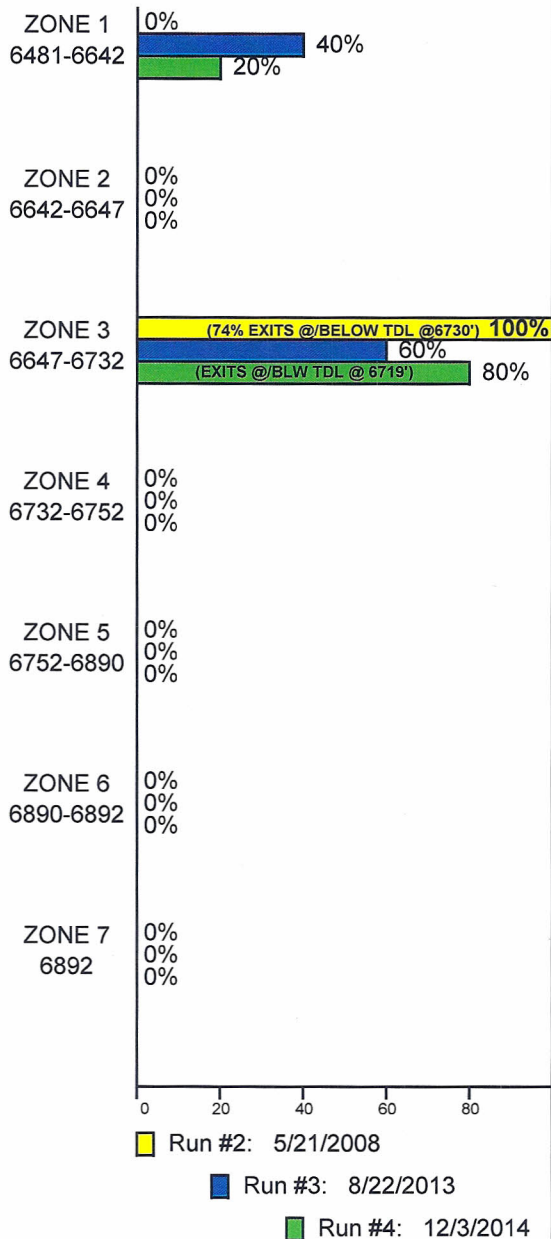
## INJECTION PROFILE

## MECHANICAL INFORMATION

7" 23# CASING	0-8500'
OPEN HOLE	6500'-6772'
P.B.T.D.	6772'
2-7/8" 7.3# TUBING	0-6419'
TOP PACKER	6419'-6427'
2-7/8" F.G.W. TK-15	6427'-6458'
ON/OFF TOOL 1.875" "F"	6458'-6463'
2-7/8" F.G.W. TK-15	6461'-6470'
PACKER	6470'-6474'
2-7/8" F.G.W. CLASS B	6474'-6506'
	F-06



PERCENTAGE INJECTED INTO  
ZONE



TEMPERATURES (F°)

[illegible]