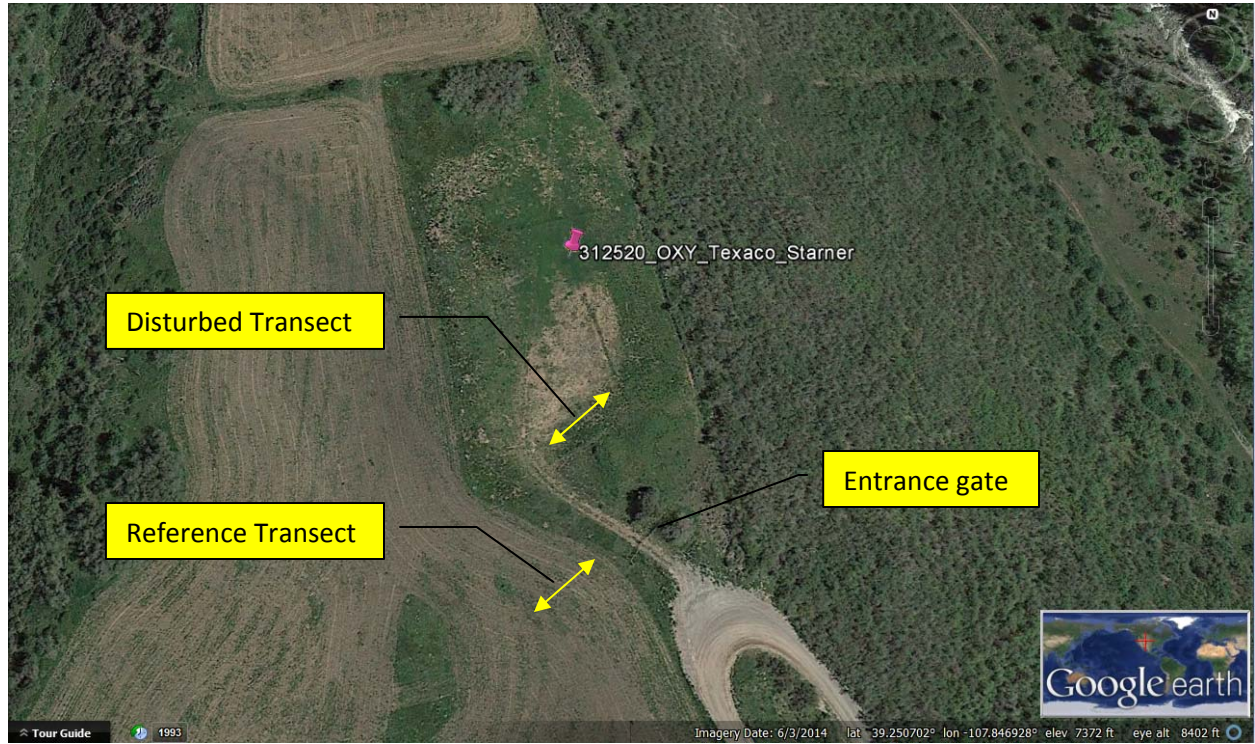


TEXACO-STARNER 26-32 Location#: 312520 , API# 077-08444 Operator: OXY USA INC , 66561  
Inspection Pictures 07/01/2014 (16 total).



1. Location and approximate vegetative transect locations (overlaid on Google Earth, 2014).



2. Location context (overlaid on Google Earth, 2014).



3. Location access road and pad entrance gate, viewed North from main road.



4. Pad, viewed North from entrance.



5. Scotch Thistle (noxious weed) above southern cut of pad, viewed East from entrance.



6. Inside / Disturbed Transect Start point (1).



7. Inside/ Disturbed Transect Start point (2).



8. Inside/ Disturbed Transect Midpoint ground cover.



9. Inside/ Disturbed Transect Midpoint #1, (looking NW).



10. Inside/ Disturbed Transect Midpoint #2, (looking SE).



11. Inside/ Disturbed Transect Endpoint.



12. Outside/ Reference Transect Start point.



13. Outside/ Disturbed Transect Midpoint ground cover.



14. Outside/ Reference Transect Midpoint #1 (looking NE).



15. Outside/ Reference Transect Midpoint #2 (looking SW).



16. Outside/ Reference Transect Endpoint.