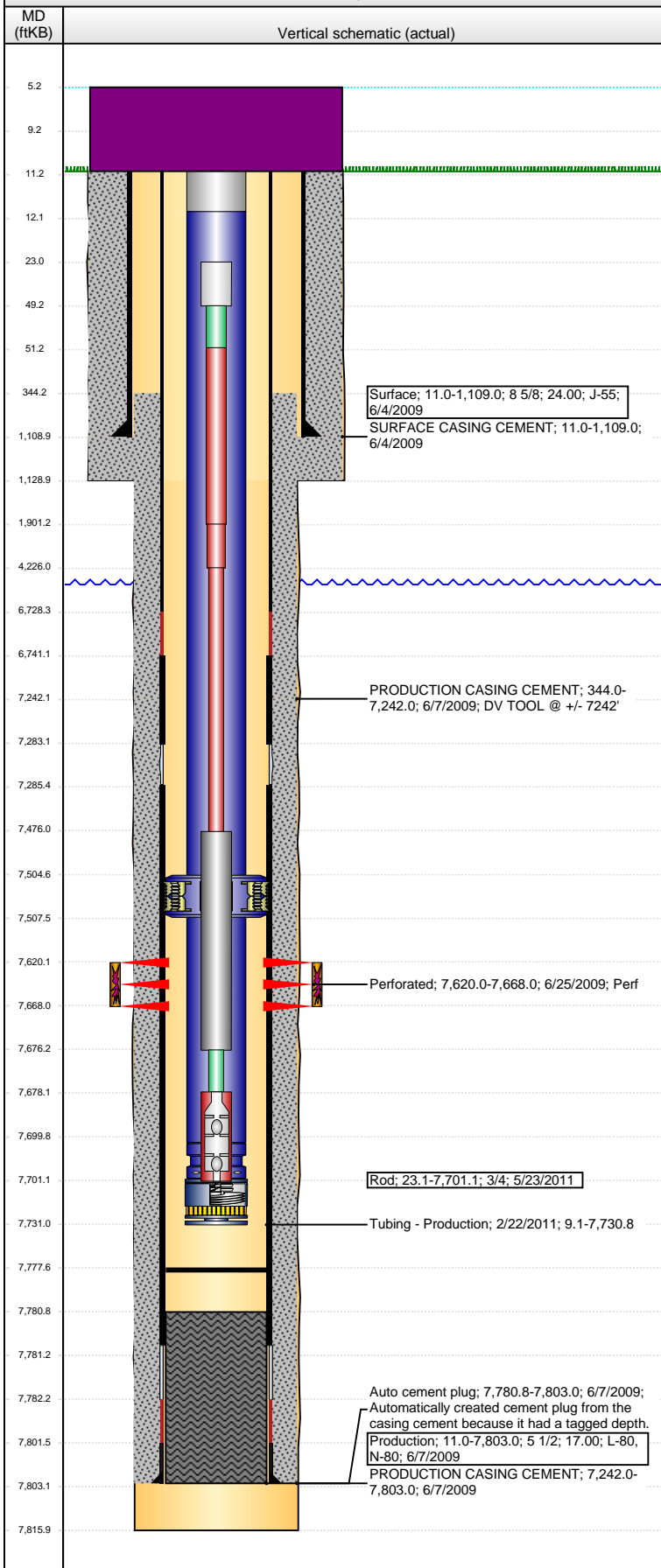


Well Name: DF RANCH 20-31

VERTICAL - ORIGINAL HOLE, 12/30/2014 9:18:29 AM



Well Header

API	Business Unit	District	Well Config
05-123-29941	DJ BASIN	25	VERTICAL
Original KB Elevation (ft)	KB - GL / MSL (ftKB)	Spud Date	P & A Date
5,157.00	11.00	6/3/2009	

Comment

DV TOOL @ +/- 7241.59'.

Directions To Well

WCR 122 & 89, NORTH 2.5 MILES, WEST 0.4 MILES AND SOUTH INTO.

Congressional Location

Quarter 1	Quarter 2	Quarter 3	Quarter 4	Section	Township	Twtnshp N...	Range	Rng E/W Dir
		NE	SW	20	11	N	61	W

Bottom Hole Location

North-South Distance (ft)	From N or S Line	East-West Distance (ft)	From E or W Line

Plug Back Total Depths

Date	Depth (ftKB)	Method	Com
6/7/2009	7,780.8	CASING TALLY	PBTD
6/25/2009	7,767.0	CASED HOLE LOG	DEPTH-LOGGER/CBL
2/18/2011	7,777.7	TAG	TBG TALLY MEASUREMENT.

Wellbore Sections

Section Des	Size (in)	Act Top, MD (ftKB)	Act Btm, MD (ftKB)
SURFACE	12 1/4	11.0	1,129.0
PRODUCTION	7 7/8	1,129.0	7,816.0

Zone Statuses

Zone Name	Status Date	Status	Job
J SAND	9/18/2009	PR	DRILLING/COMPLETION - ORIGINAL, 6/3/2009 00:00

Casing Strings

Surface, 1,109.0ftKB

Casing Description	Run Date	OD (in)	Wt/Len (l...)	Grade	Top, MD (ft...)	MD (ftKB)
Surface	6/4/2009	8 5/8	24.00	J-55	11.0	1,109.0

Production, 7,803.0ftKB

Casing Description	Run Date	OD (in)	Wt/Len (l...)	Grade	Top, MD (ft...)	MD (ftKB)
Production	6/7/2009	5 1/2	17.00	N-80	11.0	7,803.0

Cement

Description	Top Depth (ftKB)	Bottom Depth (ftKB)
SURFACE CASING CEMENT	11.0	1,109.0
PRODUCTION CASING CEMENT	344.0	7,242.0
PRODUCTION CASING CEMENT	7,242.0	7,803.0

Tubing Components

Item Des	OD (in)	Wt (lb/ft)	Grade	Jts	Len (ft)	Btm (ftKB)	Btm (TVD) (ftKB)
Stretch Correction	2 7/8	6.50	J-55	1	2.92	12.0	
Tubing	2 7/8	6.50	J-55	235	7,492.57	7,504.6	
Anchor/catcher	4.899	6.50	J-55	1	2.85	7,507.4	
Tubing	2 7/8	6.50	J-55	6	192.53	7,700.0	
Pump Seating Nipple	2 7/8	6.50	J-55	1	1.13	7,701.1	
Gas separator	3	6.50	J-55	1	29.74	7,730.8	

Rods & Pumps

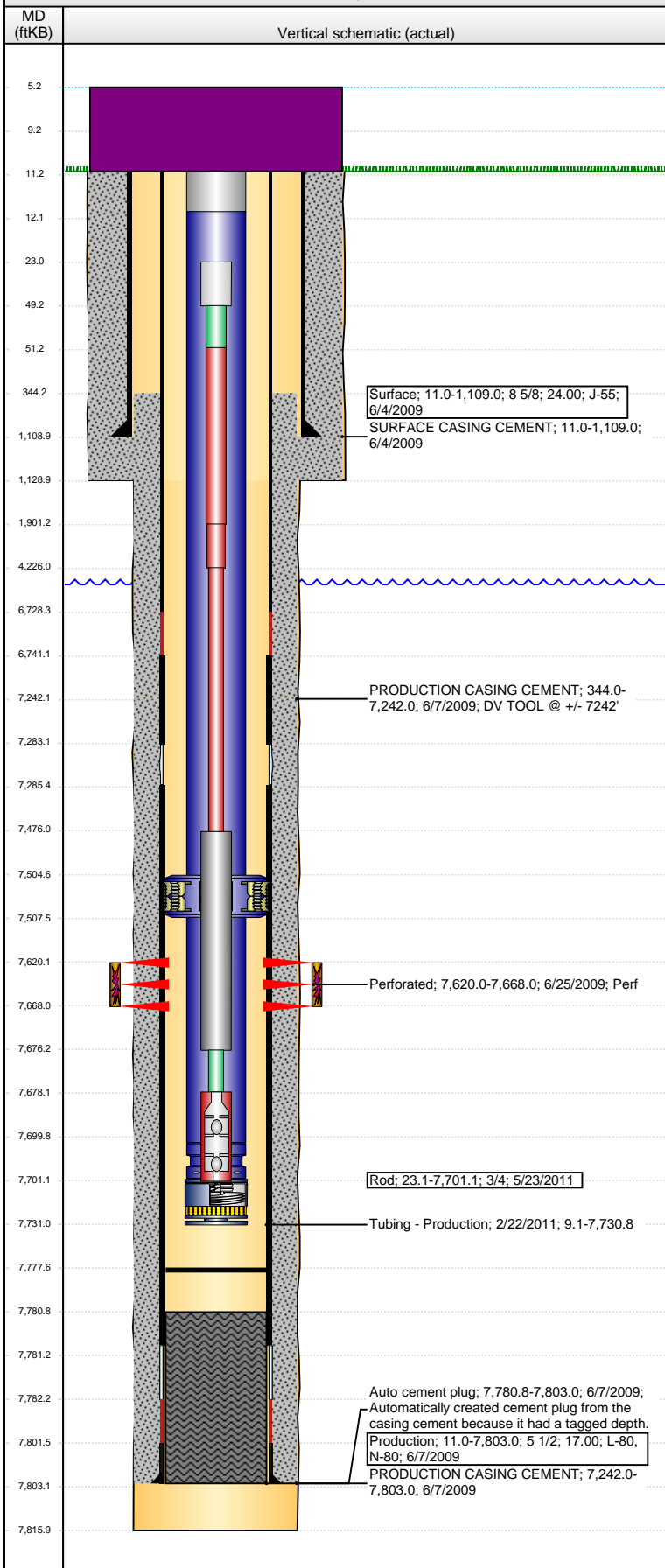
Rod Description	Run Date	Set Depth (ftKB)
Rod	5/23/2011	7,701.1

Comment

Item Description	OD Nominal (in)	Joints	Length (ft)
Polished Rod	1 1/2	1	26.00
Item Description	OD Nominal (in)	Joints	Length (ft)
Pony Rod	1	1	2.00
Item Description	OD Nominal (in)	Joints	Length (ft)
Sucker Rod	1	74	1,850.00
Item Description	OD Nominal (in)	Joints	Length (ft)
Sucker Rod	7/8	93	2,325.00
Item Description	OD Nominal (in)	Joints	Length (ft)
Sucker Rod	3/4	130	3,250.00
Item Description	OD Nominal (in)	Joints	Length (ft)
Sinker Bar	1 1/2	8	200.00
Item Description	OD Nominal (in)	Joints	Length (ft)
Pony Rod	3/4	1	2.00

Well Name: DF RANCH 20-31

VERTICAL - ORIGINAL HOLE, 12/30/2014 9:18:31 AM



Item Description		OD Nominal (in)	Joints	Length (ft)	
RHBC Pump - BHD		1 1/2	1	23.00	
API Pump Type		Barrel Length (ft)	Seating Assembly Type		
R		20.00	C		
Perforation Data					
Zone	Bnch/St g	Entered Shot Total	Top (ftKB)	Btm (ftKB)	Date
J SAND, ORIGINAL HOLE		48	7,620.00	7,668.00	6/25/2009
Stimulations & Treatments					
Date	Zone		Primary Job Type		
7/17/2009	J SAND, ORIGINAL HOLE		DRILLING/COMPLETION - ORIGINAL		
Technical Result		Tech Result Details		Tech Result Note	
Comment					
Other In Hole					
Run Date	Des		OD (in)	Top (ftKB)	Btm (ftKB)
Logs					
Date	Type		Top, MD (ftKB)	Btm, MD (ftKB)	
6/7/2009	CBL/CCL/GR		0.0	7,766.0	
6/7/2009	COMPENSATED DENSITY		3,900.0	7,787.0	
6/7/2009	DIFL/DENS/GR/GRD/CAL		344.0	7,807.0	