

29 December 2014

Colorado Oil and Gas Conservation  
Commission  
The Chancery Building  
1120 Lincoln Street, Suite 801  
Denver, CO 80203



410 17th Street, Suite 1400  
Denver, CO 80202  
(720) 440-6100 phone  
(720) 305-0804 fax

[Bonanzacrk.com](http://Bonanzacrk.com)

Attn: Matthew Lepore, Director

Re: Notice of 318A.a.(4).D Well Proposal  
Pronghorn J24-15-10XRLNC  
SHL: SESW (290' FSL, 1416' FWL) Sec 15-5N-61W, 6<sup>TH</sup> PM  
Top of Production: SESW (631' FSL, 1785' FWL) Sec 15-5N-61W, 6<sup>TH</sup> PM  
Bottom of Production: NENW (470' FNL, 1805' FWL) Sec 10-5N-61W, 6<sup>TH</sup> PM  
Weld County, Colorado

Mr. Director:

Bonanza Creek Energy, Inc. (Bonanza) intends to permit, drill and operate the referenced Niobrara Horizontal Well. As defined by Colorado Oil and Gas Conservation Commission (COGCC) Rule 318A.a.(4)D., Bonanza proposes the following wellbore spacing unit: W/2 Section 15-T5N-R61W & W/2 Section 10-T5N-R61W, 6<sup>TH</sup> PM, Weld County, CO – 640 Acres.

Bonanza is the sole mineral lease holder in the proposed spacing unit, and no mineral owner notifications were required.

Bonanza respectfully requests that you review the enclosed wellbore spacing unit documentation and approve the referenced APD.

Please do not hesitate to call or email me, directly, at (720) 440-6112 or [KCaplan@BonanzaCRK.com](mailto:KCaplan@BonanzaCRK.com), should you have any questions pertaining to this matter.

Thank you for your cooperation.

Sincerely,

**BONANZA CREEK ENERGY, INC.**  
**BONANZA CREEK ENERGY OPERATING COMPANY, LLC.**

A handwritten signature in blue ink, reading 'Keith S. Caplan'.

Keith S. Caplan  
Sr. Regulatory Specialist

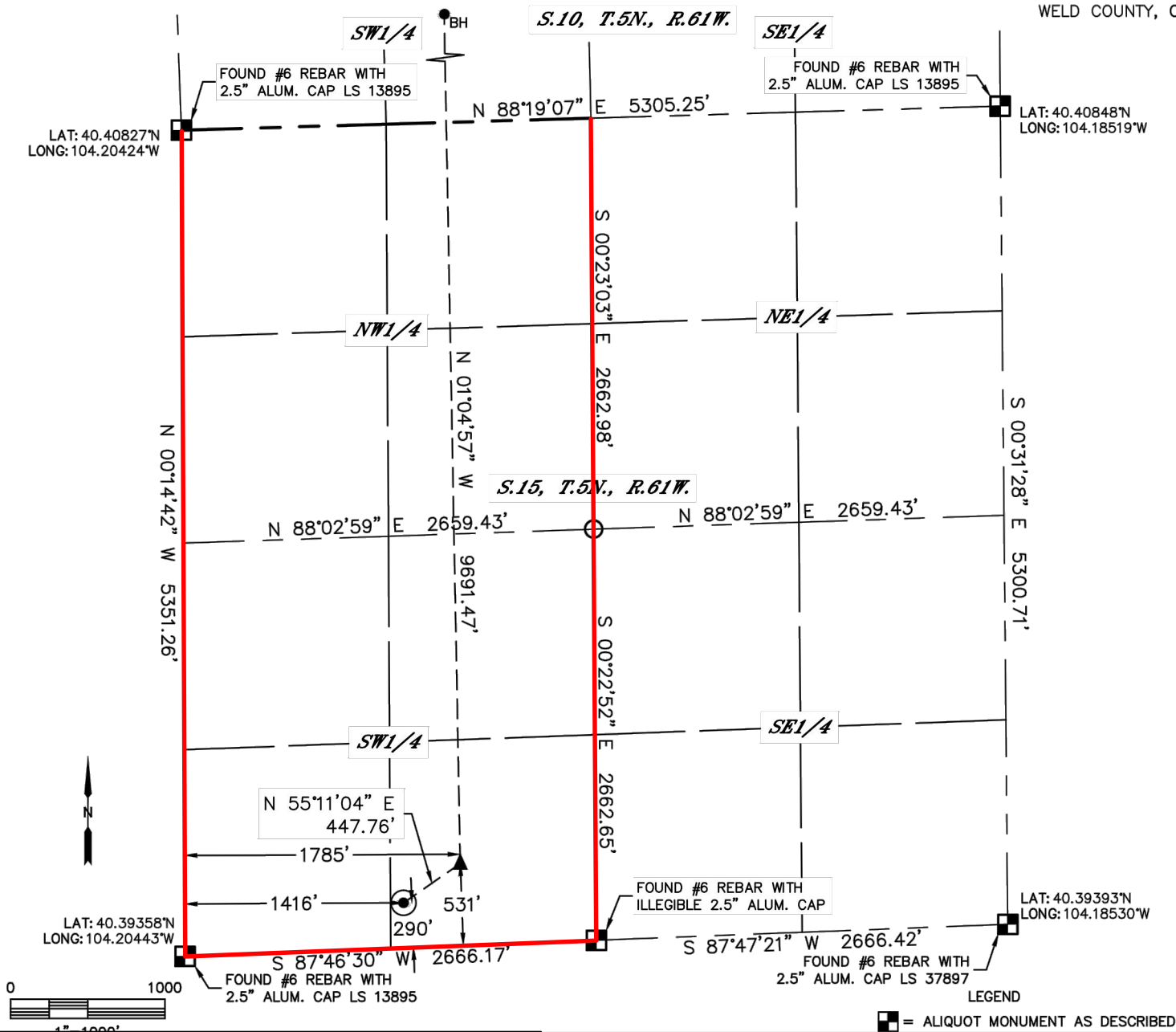


Lat40°, Inc. 6250 W. 10th Street, Unit 2, Greeley, CO 970-515-5294

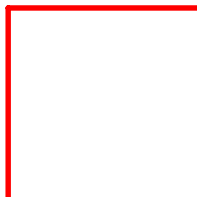
## WELL LOCATION CERTIFICATE

PRONGHORN J24-15-10XRLNC

SECTION: 15  
TOWNSHIP: 5N  
RANGE: 61W  
6TH. P.M.  
WELD COUNTY, CO



**BONANZA  
CREEK**



Wellbore Spacing Unit Outline



### Wellbore Spacing Unit Map

29 December 2014 ksc

Pronghorn J24-15-10XRLNC p1  
W/2 Sec 15-T5N-R61W 6th PM  
W/2 Sec 10-T5N-R61W 6th PM  
Weld County, Colorado

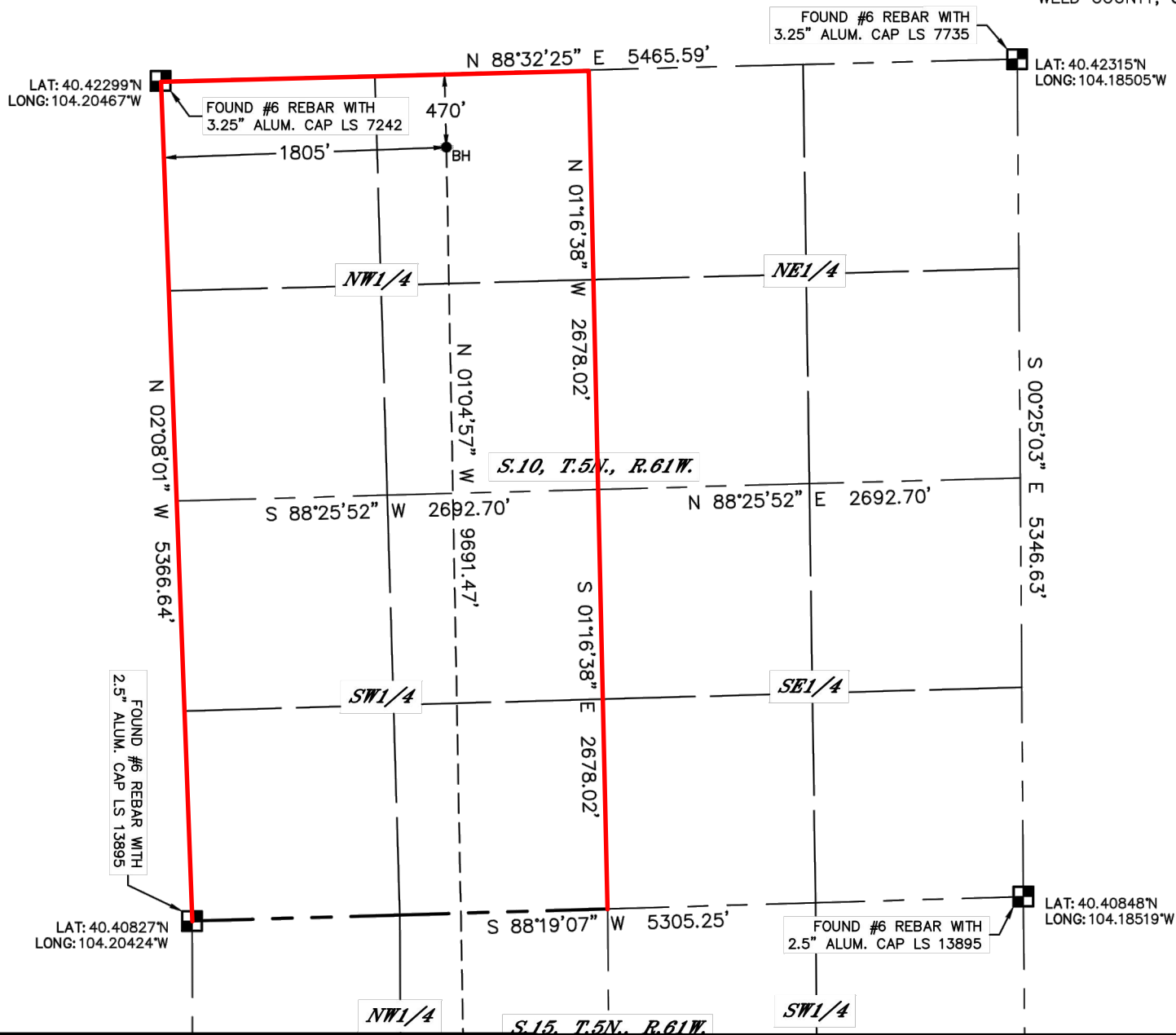


Lat40°, Inc. 6250 W. 10th Street, Unit 2, Greeley, CO 970-515-5294

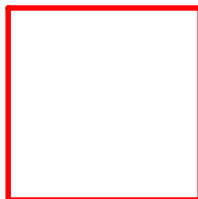
# WELL LOCATION CERTIFICATE

PRONGHORN J24-15-10XRLNC

SECTION: 15  
TOWNSHIP: 5N  
RANGE: 61W  
6TH. P.M.  
WELD COUNTY, CO



**BONANZA  
CREEK**



Wellbore Spacing Unit Outline



## Wellbore Spacing Unit Map

29 December 2014 ksc

Pronghorn J24-15-10XRLNC p2  
W/2 Sec 15-T5N-R61W 6th PM  
W/2 Sec 10-T5N-R61W 6th PM  
Weld County, Colorado