

# **BONANZA CREEK ENERGY INC.**

**WELD COUNTY, COLORADO (NAD 83)**

**SE SW SEC. 15 T5N R61W 6th P.M.**

**PRONGHORN J24-15-10XRLNC**

**ORIGINAL WELLBORE**

**11 November, 2014**

**Plan: PROPOSAL #1**



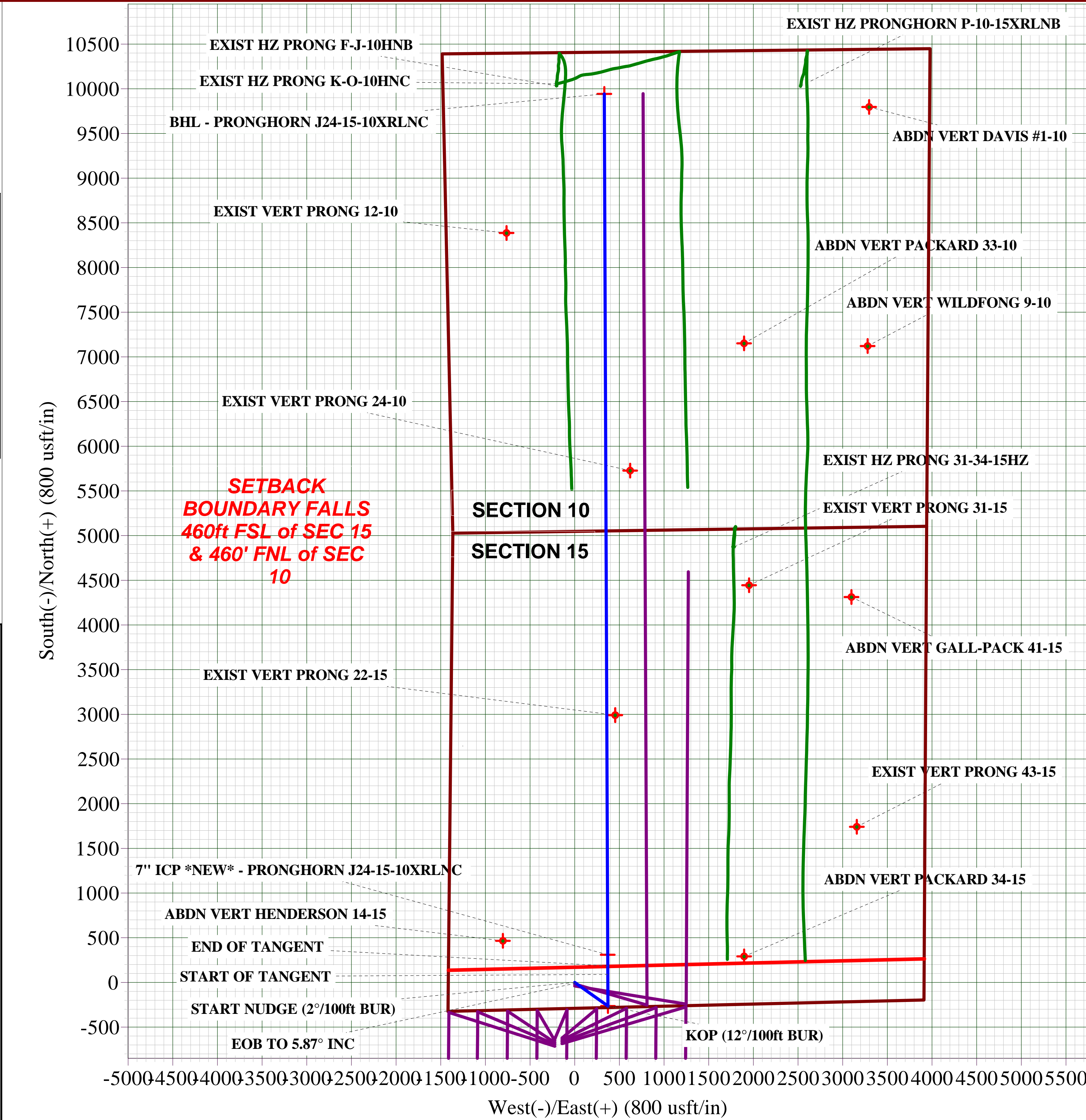
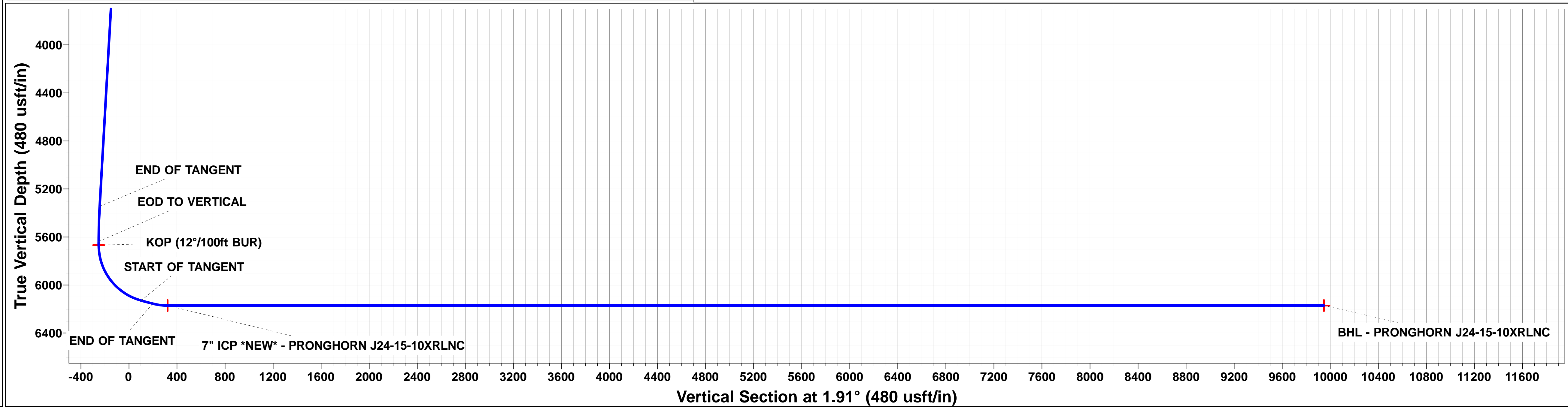
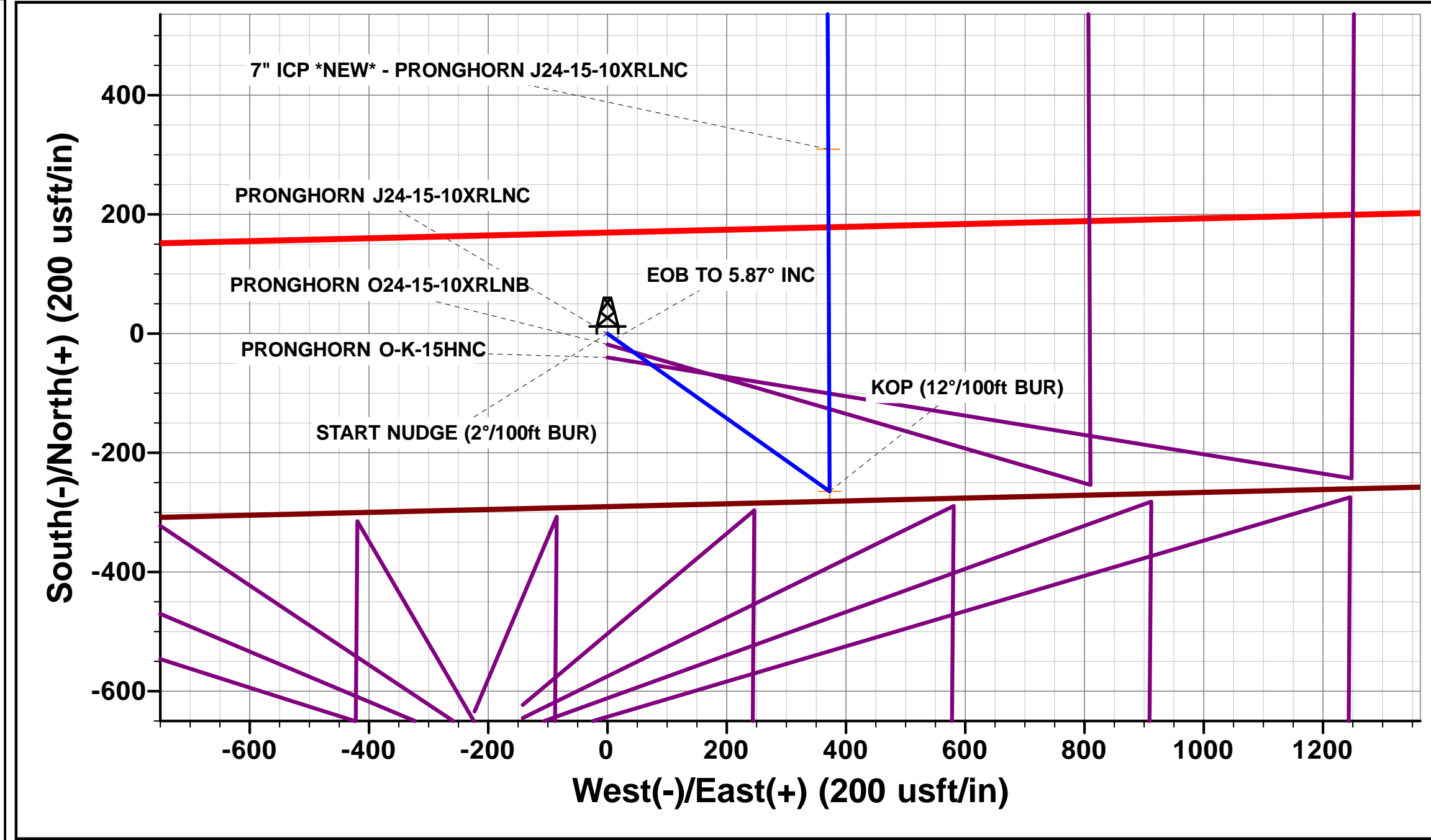
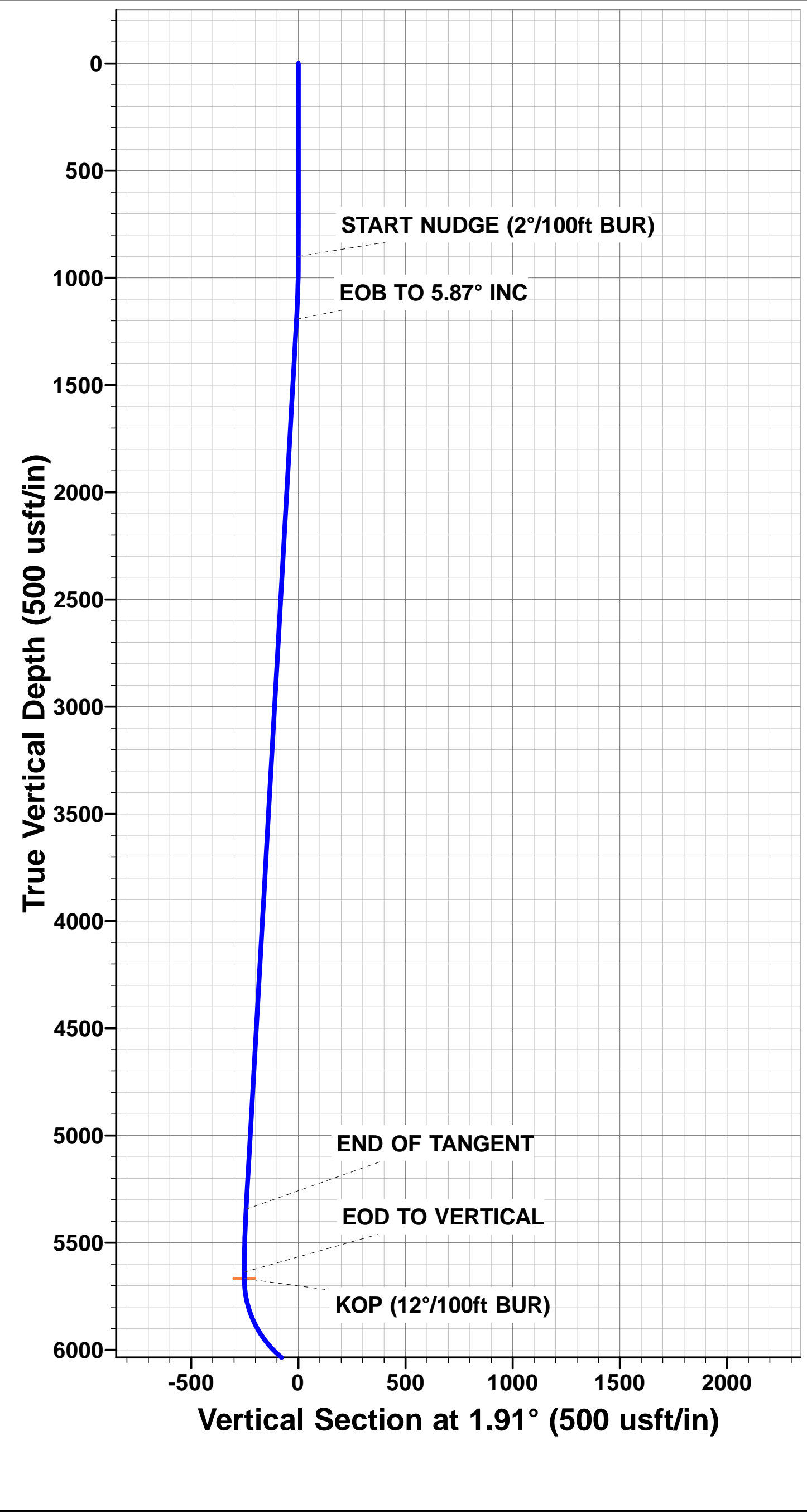


Project: WELD COUNTY, COLORADO (NAD 83)  
Site: SE SW SEC. 15 T5N R61W 6th P.M.  
Well: PRONGHORN J24-15-10XRLNC  
Wellbore: ORIGINAL WELLBORE  
Design: PROPOSAL #1

ANNOTATIONS									
TVD	MD	Inc	Azi	+N/-S	+E/-W	VSec	Dep	Annotation	
900.0	900.0	0.00	0.00	0.0	0.0	0.0	0.0	START NUDGE (2°/100ft BUR)	
1193.1	1193.6	5.87	125.38	-8.7	12.3	-8.3	15.0	EOB TO 5.87° INC	
5344.6	5367.0	5.87	125.38	-255.9	360.3	-243.8	442.0	END OF TANGENT	
5637.7	5660.6	0.00	0.00	-264.6	372.6	-252.0	457.0	EOD TO VERTICAL	
5667.7	5690.6	0.00	0.00	-264.6	372.6	-252.0	457.0	KOP (12°/100ft BUR)	
6128.9	6315.6	75.00	359.77	89.3	371.2	101.6	810.9	START OF TANGENT	
6154.8	6415.6	75.00	359.77	185.9	370.8	198.1	907.5	END OF TANGENT	
6171.0	6540.6	90.00	359.77	309.5	370.3	321.6	1031.1	7" ICP *NEW* - PRONGHORN J24-15-10XRLNC	
6171.0	16173.3	90.00	359.77	9942.1	331.3	9947.6	10663.8	BHL - PRONGHORN J24-15-10XRLNC	

PROPOSED LOCAL COORDINATES:  
  
SHL: 290ft FSL & 1416ft FWL Sec 15  
  
7" ICP \*NEW\*: 589.1ft FNL & 1785ft FWL Sec 15  
  
BHL: 470ft FSL & 1805ft FWL Sec 10

WELLBORE TARGET DETAILS (LAT/LONG)					
Name	TVD	+N/-S	+E/-W	Latitude	Longitude
KOP - PRONGHORN J24-15-10XRLNC	5667.7	-264.6	372.6	40.393744	-104.198002
7" ICP *NEW* - PRONGHORN J24-15-10XRLNC	6171.0	309.5	370.3	40.395320	-104.198011
BHL - PRONGHORN J24-15-10XRLNC	6171.0	9942.1	331.3	40.421760	-104.198150



# Planning Report



<b>Database:</b>	EDM 5000.1 Single User Db	<b>Local Co-ordinate Reference:</b>	Well PRONGHORN J24-15-10XRLNC
<b>Company:</b>	BONANZA CREEK ENERGY INC.	<b>TVD Reference:</b>	KB-EST @ 4686.0usft (Original Well Elev)
<b>Project:</b>	WELD COUNTY, COLORADO (NAD 83)	<b>MD Reference:</b>	KB-EST @ 4686.0usft (Original Well Elev)
<b>Site:</b>	SE SW SEC. 15 T5N R61W 6th P.M.	<b>North Reference:</b>	True
<b>Well:</b>	PRONGHORN J24-15-10XRLNC	<b>Survey Calculation Method:</b>	Minimum Curvature
<b>Wellbore:</b>	ORIGINAL WELLBORE		
<b>Design:</b>	PROPOSAL #1		

<b>Project</b>	WELD COUNTY, COLORADO (NAD 83)		
<b>Map System:</b>	US State Plane 1983	<b>System Datum:</b>	Mean Sea Level
<b>Geo Datum:</b>	North American Datum 1983		
<b>Map Zone:</b>	Colorado Northern Zone		Using geodetic scale factor

<b>Site</b>	SE SW SEC. 15 T5N R61W 6th P.M.		
<b>Site Position:</b>		<b>Northing:</b>	1,389,184.46 usft
<b>From:</b>	Lat/Long	<b>Easting:</b>	3,362,264.11 usft
<b>Position Uncertainty:</b>	0.0 usft	<b>Slot Radius:</b>	1.10000ft
		<b>Latitude:</b>	40.394420
		<b>Longitude:</b>	-104.199340
		<b>Grid Convergence:</b>	0.84 °

<b>Well</b>	PRONGHORN J24-15-10XRLNC		
<b>Well Position</b>	<b>+N/-S</b>	18.2 usft	<b>Northing:</b>
	<b>+E/-W</b>	0.0 usft	<b>Easting:</b>
<b>Position Uncertainty</b>		0.0 usft	<b>Wellhead Elevation:</b>
			<b>Latitude:</b>
			<b>Longitude:</b>
			<b>Ground Level:</b>

<b>Wellbore</b>	ORIGINAL WELLBORE				
<b>Magnetics</b>	<b>Model Name</b>	<b>Sample Date</b>	<b>Declination (°)</b>	<b>Dip Angle (°)</b>	<b>Field Strength (nT)</b>
	IGRF2010	11/11/2014	8.10	67.02	52,828

<b>Design</b>	PROPOSAL #1			
<b>Audit Notes:</b>				
<b>Version:</b>	<b>Phase:</b>	PROTOTYPE	<b>Tie On Depth:</b>	0.0
<b>Vertical Section:</b>	<b>Depth From (TVD) (usft)</b>	<b>+N/-S (usft)</b>	<b>+E/-W (usft)</b>	<b>Direction (°)</b>
	6,171.0	0.0	0.0	1.91

<b>Plan Sections</b>											
MD (usft)	Inc (°)	Azi (°)	Vertical Depth	SS (usft)	+N/-S (usft)	+E/-W (usft)	Dogleg Rate (°/100usf)	Build Rate (°/100usf)	Turn Rate (°/100usf)	TFO (°)	Target
0.0	0.00	0.00	0.0	-4,686.0	0.0	0.0	0.00	0.00	0.00	0.00	
900.0	0.00	0.00	900.0	-3,786.0	0.0	0.0	0.00	0.00	0.00	0.00	
1,193.6	5.87	125.38	1,193.1	-3,492.9	-8.7	12.3	2.00	2.00	0.00	125.38	
5,367.0	5.87	125.38	5,344.6	658.6	-255.9	360.3	0.00	0.00	0.00	0.00	
5,660.6	0.00	0.00	5,637.7	951.7	-264.6	372.6	2.00	-2.00	0.00	180.00	
5,690.6	0.00	0.00	5,667.7	981.7	-264.6	372.6	0.00	0.00	0.00	0.00	KOP - PRONGHOF
6,315.6	75.00	359.77	6,128.9	1,442.9	89.3	371.2	12.00	12.00	0.00	359.77	
6,415.6	75.00	359.77	6,154.8	1,468.8	185.9	370.8	0.00	0.00	0.00	0.00	
6,540.6	90.00	359.77	6,171.0	1,485.0	309.5	370.3	12.00	12.00	0.00	0.00	
16,173.3	90.00	359.77	6,171.0	1,485.0	9,942.1	331.3	0.00	0.00	0.00	-80.95	BHL - PRONGHOR

# Planning Report



<b>Database:</b>	EDM 5000.1 Single User Db	<b>Local Co-ordinate Reference:</b>	Well PRONGHORN J24-15-10XRLNC
<b>Company:</b>	BONANZA CREEK ENERGY INC.	<b>TVD Reference:</b>	KB-EST @ 4686.0usft (Original Well Elev)
<b>Project:</b>	WELD COUNTY, COLORADO (NAD 83)	<b>MD Reference:</b>	KB-EST @ 4686.0usft (Original Well Elev)
<b>Site:</b>	SE SW SEC. 15 T5N R61W 6th P.M.	<b>North Reference:</b>	True
<b>Well:</b>	PRONGHORN J24-15-10XRLNC	<b>Survey Calculation Method:</b>	Minimum Curvature
<b>Wellbore:</b>	ORIGINAL WELLBORE		
<b>Design:</b>	PROPOSAL #1		

Planned Survey										
MD (usft)	Inc (°)	Azi (°)	TVD (usft)	SS (usft)	+N/-S (usft)	+E/-W (usft)	Vertical Section (usft)	Dogleg Rate (°/100usft)	Build Rate (°/100usft)	Turn Rate (°/100usft)
0.0	0.00	0.00	0.0	4,686.00	0.0	0.0	0.0	0.00	0.00	0.00
100.0	0.00	0.00	100.0	4,586.00	0.0	0.0	0.0	0.00	0.00	0.00
200.0	0.00	0.00	200.0	4,486.00	0.0	0.0	0.0	0.00	0.00	0.00
300.0	0.00	0.00	300.0	4,386.00	0.0	0.0	0.0	0.00	0.00	0.00
400.0	0.00	0.00	400.0	4,286.00	0.0	0.0	0.0	0.00	0.00	0.00
500.0	0.00	0.00	500.0	4,186.00	0.0	0.0	0.0	0.00	0.00	0.00
600.0	0.00	0.00	600.0	4,086.00	0.0	0.0	0.0	0.00	0.00	0.00
700.0	0.00	0.00	700.0	3,986.00	0.0	0.0	0.0	0.00	0.00	0.00
800.0	0.00	0.00	800.0	3,886.00	0.0	0.0	0.0	0.00	0.00	0.00
START NUDGE (2°/100ft BUR)										
900.0	0.00	0.00	900.0	3,786.00	0.0	0.0	0.0	0.00	0.00	0.00
1,000.0	2.00	125.38	1,000.0	3,686.02	-1.0	1.4	-1.0	2.00	2.00	0.00
1,100.0	4.00	125.38	1,099.8	3,586.16	-4.0	5.7	-3.8	2.00	2.00	0.00
EOB TO 5.87° INC										
1,193.6	5.87	125.38	1,193.1	3,492.94	-8.7	12.3	-8.3	2.00	2.00	0.00
1,200.0	5.87	125.38	1,199.5	3,486.55	-9.1	12.8	-8.7	0.00	0.00	0.00
1,300.0	5.87	125.38	1,298.9	3,387.07	-15.0	21.1	-14.3	0.00	0.00	0.00
1,400.0	5.87	125.38	1,398.4	3,287.60	-20.9	29.5	-19.9	0.00	0.00	0.00
1,500.0	5.87	125.38	1,497.9	3,188.12	-26.9	37.8	-25.6	0.00	0.00	0.00
1,600.0	5.87	125.38	1,597.4	3,088.65	-32.8	46.2	-31.2	0.00	0.00	0.00
1,700.0	5.87	125.38	1,696.8	2,989.17	-38.7	54.5	-36.9	0.00	0.00	0.00
1,800.0	5.87	125.38	1,796.3	2,889.69	-44.6	62.8	-42.5	0.00	0.00	0.00
1,900.0	5.87	125.38	1,895.8	2,790.22	-50.5	71.2	-48.1	0.00	0.00	0.00
2,000.0	5.87	125.38	1,995.3	2,690.74	-56.5	79.5	-53.8	0.00	0.00	0.00
2,100.0	5.87	125.38	2,094.7	2,591.27	-62.4	87.9	-59.4	0.00	0.00	0.00
2,200.0	5.87	125.38	2,194.2	2,491.79	-68.3	96.2	-65.1	0.00	0.00	0.00
2,300.0	5.87	125.38	2,293.7	2,392.32	-74.2	104.5	-70.7	0.00	0.00	0.00
2,400.0	5.87	125.38	2,393.2	2,292.84	-80.2	112.9	-76.4	0.00	0.00	0.00
2,500.0	5.87	125.38	2,492.6	2,193.37	-86.1	121.2	-82.0	0.00	0.00	0.00
2,600.0	5.87	125.38	2,592.1	2,093.89	-92.0	129.6	-87.6	0.00	0.00	0.00
2,700.0	5.87	125.38	2,691.6	1,994.42	-97.9	137.9	-93.3	0.00	0.00	0.00
2,800.0	5.87	125.38	2,791.1	1,894.94	-103.9	146.2	-98.9	0.00	0.00	0.00
2,900.0	5.87	125.38	2,890.5	1,795.47	-109.8	154.6	-104.6	0.00	0.00	0.00
3,000.0	5.87	125.38	2,990.0	1,695.99	-115.7	162.9	-110.2	0.00	0.00	0.00
3,100.0	5.87	125.38	3,089.5	1,596.51	-121.6	171.3	-115.8	0.00	0.00	0.00
3,200.0	5.87	125.38	3,189.0	1,497.04	-127.5	179.6	-121.5	0.00	0.00	0.00
3,300.0	5.87	125.38	3,288.4	1,397.56	-133.5	187.9	-127.1	0.00	0.00	0.00
3,400.0	5.87	125.38	3,387.9	1,298.09	-139.4	196.3	-132.8	0.00	0.00	0.00
3,500.0	5.87	125.38	3,487.4	1,198.61	-145.3	204.6	-138.4	0.00	0.00	0.00
3,600.0	5.87	125.38	3,586.9	1,099.14	-151.2	213.0	-144.1	0.00	0.00	0.00
3,700.0	5.87	125.38	3,686.3	999.66	-157.2	221.3	-149.7	0.00	0.00	0.00
3,800.0	5.87	125.38	3,785.8	900.19	-163.1	229.6	-155.3	0.00	0.00	0.00
3,900.0	5.87	125.38	3,885.3	800.71	-169.0	238.0	-161.0	0.00	0.00	0.00
4,000.0	5.87	125.38	3,984.8	701.24	-174.9	246.3	-166.6	0.00	0.00	0.00
4,100.0	5.87	125.38	4,084.2	601.76	-180.9	254.7	-172.3	0.00	0.00	0.00
4,200.0	5.87	125.38	4,183.7	502.29	-186.8	263.0	-177.9	0.00	0.00	0.00
4,300.0	5.87	125.38	4,283.2	402.81	-192.7	271.3	-183.6	0.00	0.00	0.00
4,400.0	5.87	125.38	4,382.7	303.33	-198.6	279.7	-189.2	0.00	0.00	0.00
4,500.0	5.87	125.38	4,482.1	203.86	-204.5	288.0	-194.8	0.00	0.00	0.00
4,600.0	5.87	125.38	4,581.6	104.38	-210.5	296.4	-200.5	0.00	0.00	0.00
4,700.0	5.87	125.38	4,681.1	4.91	-216.4	304.7	-206.1	0.00	0.00	0.00
4,800.0	5.87	125.38	4,780.6	-94.57	-222.3	313.1	-211.8	0.00	0.00	0.00
4,900.0	5.87	125.38	4,880.0	-194.04	-228.2	321.4	-217.4	0.00	0.00	0.00
5,000.0	5.87	125.38	4,979.5	-293.52	-234.2	329.7	-223.0	0.00	0.00	0.00



# Planning Report



<b>Database:</b>	EDM 5000.1 Single User Db	<b>Local Co-ordinate Reference:</b>	Well PRONGHORN J24-15-10XRLNC
<b>Company:</b>	BONANZA CREEK ENERGY INC.	<b>TVD Reference:</b>	KB-EST @ 4686.0usft (Original Well Elev)
<b>Project:</b>	WELD COUNTY, COLORADO (NAD 83)	<b>MD Reference:</b>	KB-EST @ 4686.0usft (Original Well Elev)
<b>Site:</b>	SE SW SEC. 15 T5N R61W 6th P.M.	<b>North Reference:</b>	True
<b>Well:</b>	PRONGHORN J24-15-10XRLNC	<b>Survey Calculation Method:</b>	Minimum Curvature
<b>Wellbore:</b>	ORIGINAL WELLBORE		
<b>Design:</b>	PROPOSAL #1		

## Planned Survey

MD (usft)	Inc (°)	Azi (°)	TVD (usft)	SS (usft)	+N/-S (usft)	+E/-W (usft)	Vertical Section (usft)	Dogleg Rate (°/100usft)	Build Rate (°/100usft)	Turn Rate (°/100usft)
5,100.0	5.87	125.38	5,079.0	-392.99	-240.1	338.1	-228.7	0.00	0.00	0.00
5,200.0	5.87	125.38	5,178.5	-492.47	-246.0	346.4	-234.3	0.00	0.00	0.00
5,300.0	5.87	125.38	5,277.9	-591.94	-251.9	354.8	-240.0	0.00	0.00	0.00
<b>END OF TANGENT</b>										
<b>5,367.0</b>	<b>5.87</b>	<b>125.38</b>	<b>5,344.6</b>	<b>-658.64</b>	<b>-255.9</b>	<b>360.3</b>	<b>-243.8</b>	<b>0.00</b>	<b>0.00</b>	<b>0.00</b>
5,400.0	5.21	125.38	5,377.4	-691.44	-257.7	362.9	-245.5	2.00	-2.00	0.00
5,500.0	3.21	125.38	5,477.2	-791.16	-262.0	368.9	-249.6	2.00	-2.00	0.00
5,600.0	1.21	125.38	5,577.1	-891.08	-264.2	372.1	-251.7	2.00	-2.00	0.00
<b>EOD TO VERTICAL</b>										
<b>5,660.6</b>	<b>0.00</b>	<b>0.00</b>	<b>5,637.7</b>	<b>-951.70</b>	<b>-264.6</b>	<b>372.6</b>	<b>-252.0</b>	<b>2.00</b>	<b>-2.00</b>	<b>0.00</b>
<b>KOP (12°/100ft BUR)</b>										
<b>5,690.6</b>	<b>0.00</b>	<b>0.00</b>	<b>5,667.7</b>	<b>-981.70</b>	<b>-264.6</b>	<b>372.6</b>	<b>-252.0</b>	<b>0.00</b>	<b>0.00</b>	<b>0.00</b>
5,700.0	1.13	359.77	5,677.1	-991.08	-264.5	372.6	-252.0	12.00	12.00	0.00
5,800.0	13.13	359.77	5,776.1	-1,090.12	-252.1	372.5	-239.6	12.00	12.00	0.00
5,900.0	25.13	359.77	5,870.4	-1,184.43	-219.4	372.4	-206.9	12.00	12.00	0.00
6,000.0	37.13	359.77	5,955.9	-1,269.88	-167.8	372.2	-155.3	12.00	12.00	0.00
6,100.0	49.13	359.77	6,028.7	-1,342.73	-99.6	371.9	-87.1	12.00	12.00	0.00
6,200.0	61.13	359.77	6,085.8	-1,399.81	-17.7	371.6	-5.3	12.00	12.00	0.00
6,300.0	73.13	359.77	6,124.6	-1,438.61	74.3	371.2	86.6	12.00	12.00	0.00
<b>START OF TANGENT</b>										
<b>6,315.6</b>	<b>75.00</b>	<b>359.77</b>	<b>6,128.9</b>	<b>-1,442.90</b>	<b>89.3</b>	<b>371.2</b>	<b>101.6</b>	<b>12.00</b>	<b>12.00</b>	<b>0.00</b>
6,400.0	75.00	359.77	6,150.7	-1,464.73	170.8	370.9	183.0	0.00	0.00	0.00
<b>END OF TANGENT</b>										
<b>6,415.6</b>	<b>75.00</b>	<b>359.77</b>	<b>6,154.8</b>	<b>-1,468.78</b>	<b>185.9</b>	<b>370.8</b>	<b>198.1</b>	<b>0.00</b>	<b>0.00</b>	<b>0.00</b>
6,500.0	85.13	359.77	6,169.3	-1,483.32	268.9	370.5	281.1	12.00	12.00	0.00
<b>7" ICP *NEW* - PRONGHORN J24-15-10XRLNC</b>										
<b>6,540.6</b>	<b>90.00</b>	<b>359.77</b>	<b>6,171.0</b>	<b>-1,485.05</b>	<b>309.5</b>	<b>370.3</b>	<b>321.6</b>	<b>12.00</b>	<b>12.00</b>	<b>0.00</b>
6,600.0	90.00	359.77	6,171.0	-1,485.05	368.8	370.1	381.0	0.00	0.00	0.00
6,700.0	90.00	359.77	6,171.0	-1,485.05	468.8	369.7	480.9	0.00	0.00	0.00
6,800.0	90.00	359.77	6,171.0	-1,485.05	568.8	369.3	580.8	0.00	0.00	0.00
6,900.0	90.00	359.77	6,171.0	-1,485.05	668.8	368.9	680.7	0.00	0.00	0.00
7,000.0	90.00	359.77	6,171.0	-1,485.05	768.8	368.5	780.7	0.00	0.00	0.00
7,100.0	90.00	359.77	6,171.0	-1,485.05	868.8	368.0	880.6	0.00	0.00	0.00
7,200.0	90.00	359.77	6,171.0	-1,485.05	968.8	367.6	980.5	0.00	0.00	0.00
7,300.0	90.00	359.77	6,171.0	-1,485.05	1,068.8	367.2	1,080.5	0.00	0.00	0.00
7,400.0	90.00	359.77	6,171.0	-1,485.05	1,168.8	366.8	1,180.4	0.00	0.00	0.00
7,500.0	90.00	359.77	6,171.0	-1,485.05	1,268.8	366.4	1,280.3	0.00	0.00	0.00
7,600.0	90.00	359.77	6,171.0	-1,485.05	1,368.8	366.0	1,380.3	0.00	0.00	0.00
7,700.0	90.00	359.77	6,171.0	-1,485.05	1,468.8	365.6	1,480.2	0.00	0.00	0.00
7,800.0	90.00	359.77	6,171.0	-1,485.05	1,568.8	365.2	1,580.1	0.00	0.00	0.00
7,900.0	90.00	359.77	6,171.0	-1,485.05	1,668.8	364.8	1,680.0	0.00	0.00	0.00
8,000.0	90.00	359.77	6,171.0	-1,485.05	1,768.8	364.4	1,780.0	0.00	0.00	0.00
8,100.0	90.00	359.77	6,171.0	-1,485.05	1,868.8	364.0	1,879.9	0.00	0.00	0.00
8,200.0	90.00	359.77	6,171.0	-1,485.05	1,968.8	363.6	1,979.8	0.00	0.00	0.00
8,300.0	90.00	359.77	6,171.0	-1,485.05	2,068.8	363.2	2,079.8	0.00	0.00	0.00
8,400.0	90.00	359.77	6,171.0	-1,485.04	2,168.8	362.8	2,179.7	0.00	0.00	0.00
8,500.0	90.00	359.77	6,171.0	-1,485.04	2,268.8	362.4	2,279.6	0.00	0.00	0.00
8,600.0	90.00	359.77	6,171.0	-1,485.04	2,368.8	362.0	2,379.6	0.00	0.00	0.00
8,700.0	90.00	359.77	6,171.0	-1,485.04	2,468.8	361.6	2,479.5	0.00	0.00	0.00
8,800.0	90.00	359.77	6,171.0	-1,485.04	2,568.8	361.2	2,579.4	0.00	0.00	0.00
8,900.0	90.00	359.77	6,171.0	-1,485.04	2,668.8	360.8	2,679.3	0.00	0.00	0.00
9,000.0	90.00	359.77	6,171.0	-1,485.04	2,768.8	360.4	2,779.3	0.00	0.00	0.00
9,100.0	90.00	359.77	6,171.0	-1,485.04	2,868.8	360.0	2,879.2	0.00	0.00	0.00

# Planning Report



<b>Database:</b>	EDM 5000.1 Single User Db	<b>Local Co-ordinate Reference:</b>	Well PRONGHORN J24-15-10XRLNC
<b>Company:</b>	BONANZA CREEK ENERGY INC.	<b>TVD Reference:</b>	KB-EST @ 4686.0usft (Original Well Elev)
<b>Project:</b>	WELD COUNTY, COLORADO (NAD 83)	<b>MD Reference:</b>	KB-EST @ 4686.0usft (Original Well Elev)
<b>Site:</b>	SE SW SEC. 15 T5N R61W 6th P.M.	<b>North Reference:</b>	True
<b>Well:</b>	PRONGHORN J24-15-10XRLNC	<b>Survey Calculation Method:</b>	Minimum Curvature
<b>Wellbore:</b>	ORIGINAL WELLBORE		
<b>Design:</b>	PROPOSAL #1		

Planned Survey										
MD (usft)	Inc (°)	Azi (°)	TVD (usft)	SS (usft)	+N/-S (usft)	+E/-W (usft)	Vertical Section (usft)	Dogleg Rate (°/100usft)	Build Rate (°/100usft)	Turn Rate (°/100usft)
9,200.0	90.00	359.77	6,171.0	-1,485.04	2,968.8	359.6	2,979.1	0.00	0.00	0.00
9,300.0	90.00	359.77	6,171.0	-1,485.04	3,068.8	359.2	3,079.1	0.00	0.00	0.00
9,400.0	90.00	359.77	6,171.0	-1,485.04	3,168.8	358.8	3,179.0	0.00	0.00	0.00
9,500.0	90.00	359.77	6,171.0	-1,485.04	3,268.8	358.4	3,278.9	0.00	0.00	0.00
9,600.0	90.00	359.77	6,171.0	-1,485.04	3,368.8	358.0	3,378.9	0.00	0.00	0.00
9,700.0	90.00	359.77	6,171.0	-1,485.04	3,468.8	357.6	3,478.8	0.00	0.00	0.00
9,800.0	90.00	359.77	6,171.0	-1,485.04	3,568.8	357.2	3,578.7	0.00	0.00	0.00
9,900.0	90.00	359.77	6,171.0	-1,485.04	3,668.8	356.8	3,678.7	0.00	0.00	0.00
10,000.0	90.00	359.77	6,171.0	-1,485.04	3,768.8	356.4	3,778.6	0.00	0.00	0.00
10,100.0	90.00	359.77	6,171.0	-1,485.04	3,868.8	356.0	3,878.5	0.00	0.00	0.00
10,200.0	90.00	359.77	6,171.0	-1,485.04	3,968.8	355.6	3,978.4	0.00	0.00	0.00
10,300.0	90.00	359.77	6,171.0	-1,485.04	4,068.8	355.2	4,078.4	0.00	0.00	0.00
10,400.0	90.00	359.77	6,171.0	-1,485.04	4,168.8	354.8	4,178.3	0.00	0.00	0.00
10,500.0	90.00	359.77	6,171.0	-1,485.04	4,268.8	354.4	4,278.2	0.00	0.00	0.00
10,600.0	90.00	359.77	6,171.0	-1,485.04	4,368.8	353.9	4,378.2	0.00	0.00	0.00
10,700.0	90.00	359.77	6,171.0	-1,485.04	4,468.8	353.5	4,478.1	0.00	0.00	0.00
10,800.0	90.00	359.77	6,171.0	-1,485.04	4,568.8	353.1	4,578.0	0.00	0.00	0.00
10,900.0	90.00	359.77	6,171.0	-1,485.04	4,668.8	352.7	4,678.0	0.00	0.00	0.00
11,000.0	90.00	359.77	6,171.0	-1,485.04	4,768.8	352.3	4,777.9	0.00	0.00	0.00
11,100.0	90.00	359.77	6,171.0	-1,485.04	4,868.8	351.9	4,877.8	0.00	0.00	0.00
11,200.0	90.00	359.77	6,171.0	-1,485.04	4,968.8	351.5	4,977.7	0.00	0.00	0.00
11,300.0	90.00	359.77	6,171.0	-1,485.04	5,068.8	351.1	5,077.7	0.00	0.00	0.00
11,400.0	90.00	359.77	6,171.0	-1,485.03	5,168.8	350.7	5,177.6	0.00	0.00	0.00
11,500.0	90.00	359.77	6,171.0	-1,485.03	5,268.8	350.3	5,277.5	0.00	0.00	0.00
11,600.0	90.00	359.77	6,171.0	-1,485.03	5,368.8	349.9	5,377.5	0.00	0.00	0.00
11,700.0	90.00	359.77	6,171.0	-1,485.03	5,468.8	349.5	5,477.4	0.00	0.00	0.00
11,800.0	90.00	359.77	6,171.0	-1,485.03	5,568.8	349.1	5,577.3	0.00	0.00	0.00
11,900.0	90.00	359.77	6,171.0	-1,485.03	5,668.8	348.7	5,677.3	0.00	0.00	0.00
12,000.0	90.00	359.77	6,171.0	-1,485.03	5,768.8	348.3	5,777.2	0.00	0.00	0.00
12,100.0	90.00	359.77	6,171.0	-1,485.03	5,868.8	347.9	5,877.1	0.00	0.00	0.00
12,200.0	90.00	359.77	6,171.0	-1,485.03	5,968.8	347.5	5,977.0	0.00	0.00	0.00
12,300.0	90.00	359.77	6,171.0	-1,485.03	6,068.8	347.1	6,077.0	0.00	0.00	0.00
12,400.0	90.00	359.77	6,171.0	-1,485.03	6,168.8	346.7	6,176.9	0.00	0.00	0.00
12,500.0	90.00	359.77	6,171.0	-1,485.03	6,268.8	346.3	6,276.8	0.00	0.00	0.00
12,600.0	90.00	359.77	6,171.0	-1,485.03	6,368.8	345.9	6,376.8	0.00	0.00	0.00
12,700.0	90.00	359.77	6,171.0	-1,485.03	6,468.8	345.5	6,476.7	0.00	0.00	0.00
12,800.0	90.00	359.77	6,171.0	-1,485.03	6,568.8	345.0	6,576.6	0.00	0.00	0.00
12,900.0	90.00	359.77	6,171.0	-1,485.03	6,668.8	344.6	6,676.6	0.00	0.00	0.00
13,000.0	90.00	359.77	6,171.0	-1,485.03	6,768.8	344.2	6,776.5	0.00	0.00	0.00
13,100.0	90.00	359.77	6,171.0	-1,485.03	6,868.8	343.8	6,876.4	0.00	0.00	0.00
13,200.0	90.00	359.77	6,171.0	-1,485.02	6,968.8	343.4	6,976.3	0.00	0.00	0.00
13,300.0	90.00	359.77	6,171.0	-1,485.02	7,068.8	343.0	7,076.3	0.00	0.00	0.00
13,400.0	90.00	359.77	6,171.0	-1,485.02	7,168.8	342.6	7,176.2	0.00	0.00	0.00
13,500.0	90.00	359.77	6,171.0	-1,485.02	7,268.8	342.2	7,276.1	0.00	0.00	0.00
13,600.0	90.00	359.77	6,171.0	-1,485.02	7,368.8	341.8	7,376.1	0.00	0.00	0.00
13,700.0	90.00	359.77	6,171.0	-1,485.02	7,468.8	341.4	7,476.0	0.00	0.00	0.00
13,800.0	90.00	359.77	6,171.0	-1,485.02	7,568.8	341.0	7,575.9	0.00	0.00	0.00
13,900.0	90.00	359.77	6,171.0	-1,485.02	7,668.8	340.6	7,675.9	0.00	0.00	0.00
14,000.0	90.00	359.77	6,171.0	-1,485.02	7,768.8	340.2	7,775.8	0.00	0.00	0.00
14,100.0	90.00	359.77	6,171.0	-1,485.02	7,868.8	339.8	7,875.7	0.00	0.00	0.00
14,200.0	90.00	359.77	6,171.0	-1,485.02	7,968.8	339.4	7,975.7	0.00	0.00	0.00
14,300.0	90.00	359.77	6,171.0	-1,485.02	8,068.8	339.0	8,075.6	0.00	0.00	0.00
14,400.0	90.00	359.77	6,171.0	-1,485.02	8,168.8	338.6	8,175.5	0.00	0.00	0.00
14,500.0	90.00	359.77	6,171.0	-1,485.01	8,268.8	338.1	8,275.4	0.00	0.00	0.00

# Planning Report



<b>Database:</b>	EDM 5000.1 Single User Db	<b>Local Co-ordinate Reference:</b>	Well PRONGHORN J24-15-10XRLNC
<b>Company:</b>	BONANZA CREEK ENERGY INC.	<b>TVD Reference:</b>	KB-EST @ 4686.0usft (Original Well Elev)
<b>Project:</b>	WELD COUNTY, COLORADO (NAD 83)	<b>MD Reference:</b>	KB-EST @ 4686.0usft (Original Well Elev)
<b>Site:</b>	SE SW SEC. 15 T5N R61W 6th P.M.	<b>North Reference:</b>	True
<b>Well:</b>	PRONGHORN J24-15-10XRLNC	<b>Survey Calculation Method:</b>	Minimum Curvature
<b>Wellbore:</b>	ORIGINAL WELLBORE		
<b>Design:</b>	PROPOSAL #1		

Planned Survey										
MD (usft)	Inc (°)	Azi (°)	TVD (usft)	SS (usft)	+N/-S (usft)	+E/-W (usft)	Vertical Section (usft)	Dogleg Rate (°/100usft)	Build Rate (°/100usft)	Turn Rate (°/100usft)
14,600.0	90.00	359.77	6,171.0	-1,485.01	8,368.8	337.7	8,375.4	0.00	0.00	0.00
14,700.0	90.00	359.77	6,171.0	-1,485.01	8,468.8	337.3	8,475.3	0.00	0.00	0.00
14,800.0	90.00	359.77	6,171.0	-1,485.01	8,568.8	336.9	8,575.2	0.00	0.00	0.00
14,900.0	90.00	359.77	6,171.0	-1,485.01	8,668.8	336.5	8,675.2	0.00	0.00	0.00
15,000.0	90.00	359.77	6,171.0	-1,485.01	8,768.8	336.1	8,775.1	0.00	0.00	0.00
15,100.0	90.00	359.77	6,171.0	-1,485.01	8,868.8	335.7	8,875.0	0.00	0.00	0.00
15,200.0	90.00	359.77	6,171.0	-1,485.01	8,968.8	335.3	8,975.0	0.00	0.00	0.00
15,300.0	90.00	359.77	6,171.0	-1,485.01	9,068.8	334.9	9,074.9	0.00	0.00	0.00
15,400.0	90.00	359.77	6,171.0	-1,485.01	9,168.8	334.5	9,174.8	0.00	0.00	0.00
15,500.0	90.00	359.77	6,171.0	-1,485.01	9,268.8	334.1	9,274.7	0.00	0.00	0.00
15,600.0	90.00	359.77	6,171.0	-1,485.01	9,368.8	333.7	9,374.7	0.00	0.00	0.00
15,700.0	90.00	359.77	6,171.0	-1,485.00	9,468.8	333.3	9,474.6	0.00	0.00	0.00
15,800.0	90.00	359.77	6,171.0	-1,485.00	9,568.8	332.9	9,574.5	0.00	0.00	0.00
15,900.0	90.00	359.77	6,171.0	-1,485.00	9,668.8	332.4	9,674.5	0.00	0.00	0.00
16,000.0	90.00	359.77	6,171.0	-1,485.00	9,768.8	332.0	9,774.4	0.00	0.00	0.00
16,100.0	90.00	359.77	6,171.0	-1,485.00	9,868.8	331.6	9,874.3	0.00	0.00	0.00
<b>BHL - PRONGHORN J24-15-10XRLNC</b>										
<b>16,173.3</b>	<b>90.00</b>	<b>359.77</b>	<b>6,171.0</b>	<b>-1,485.00</b>	<b>9,942.1</b>	<b>331.3</b>	<b>9,947.6</b>	<b>0.00</b>	<b>0.00</b>	<b>0.00</b>

Plan Annotations				
MD (usft)	TVD (usft)	Local Coordinates		Comment
		+N/-S (usft)	+E/-W (usft)	
900.0	900.0	0.0	0.0	START NUDGE (2°/100ft BUR)
1,193.6	1,193.1	-8.7	12.3	EOB TO 5.87° INC
5,367.0	5,344.6	-255.9	360.3	END OF TANGENT
5,660.6	5,637.7	-264.6	372.6	EOD TO VERTICAL
5,690.6	5,667.7	-264.6	372.6	KOP (12°/100ft BUR)
6,315.6	6,128.9	89.3	371.2	START OF TANGENT
6,415.6	6,154.8	185.9	370.8	END OF TANGENT
6,540.6	6,171.0	309.5	370.3	7" ICP *NEW* - PRONGHORN J24-15-10XRLNC
16,173.3	6,171.0	9,942.1	331.3	BHL - PRONGHORN J24-15-10XRLNC