



RADIAL CEMENT BOND  
GAMMA RAY  
CCL

Company KERR MCGEE OIL AND GAS  
Well ST. ACACIUS 18-35  
Field WATTENBERG  
County WELD State CO

Location: API # : 05-123-24911  
SHL: 1492' FNL & 1076' FWL SW/NW  
SEC 35 TWP 3N RGE 68W  
Permanent Datum GL Elevation 4920'  
Log Measured From KB 12'  
Drilling Measured From KB  
Other Services  
K.B. 4932'  
D.F. 4931'  
G.L. 4920'

Company KERR MCGEE OIL AND GAS  
Well ST. ACACIUS 18-35  
Field WATTENBERG  
County WELD  
State CO

Date

11-20-2014

Run Number ONE  
Depth Driller 7430'  
Depth Logger 3410'  
Bottom Logged Interval 3407'  
Top Log Interval SURFACE  
Open Hole Size 7.875  
Type Fluid WATER  
Density / Viscosity 1.0  
Max. Recorded Temp. 107 DEG F  
Estimated Cement Top 86'  
Time Well Ready N/A  
Time Logger on Bottom N/A  
Equipment Number 4310  
Location GREELEY  
Recorded By N. BREHMER  
Witnessed By J. CHANDLER

Borehole Record  
Run Number ONE  
Bit 12.25"  
From SURFACE  
To 860'  
Size 7.88"  
Tubing Record  
Size 7430'  
Weight  
From  
To


Casing Record  
Surface String 8.63  
Prot. String 24#  
Production String 11.6#  
Liner 4.5  
Size  
Wgt/Ft  
Top  
Bottom  
SURFACE  
SURFACE  
SURFACE  
7421'

<<< Fold Here >>>

All interpretations are opinions based on inferences from electrical or other measurements and we cannot and do not guarantee the accuracy or correctness of any interpretation, and we shall not, except in the case of gross or willful negligence on our part, be liable or responsible for any loss, costs, damages, or expenses incurred or sustained by anyone resulting from any interpretation made by any of our officers, agents or employees. These interpretations are also subject to our general terms and conditions set out in our current Price Schedule.

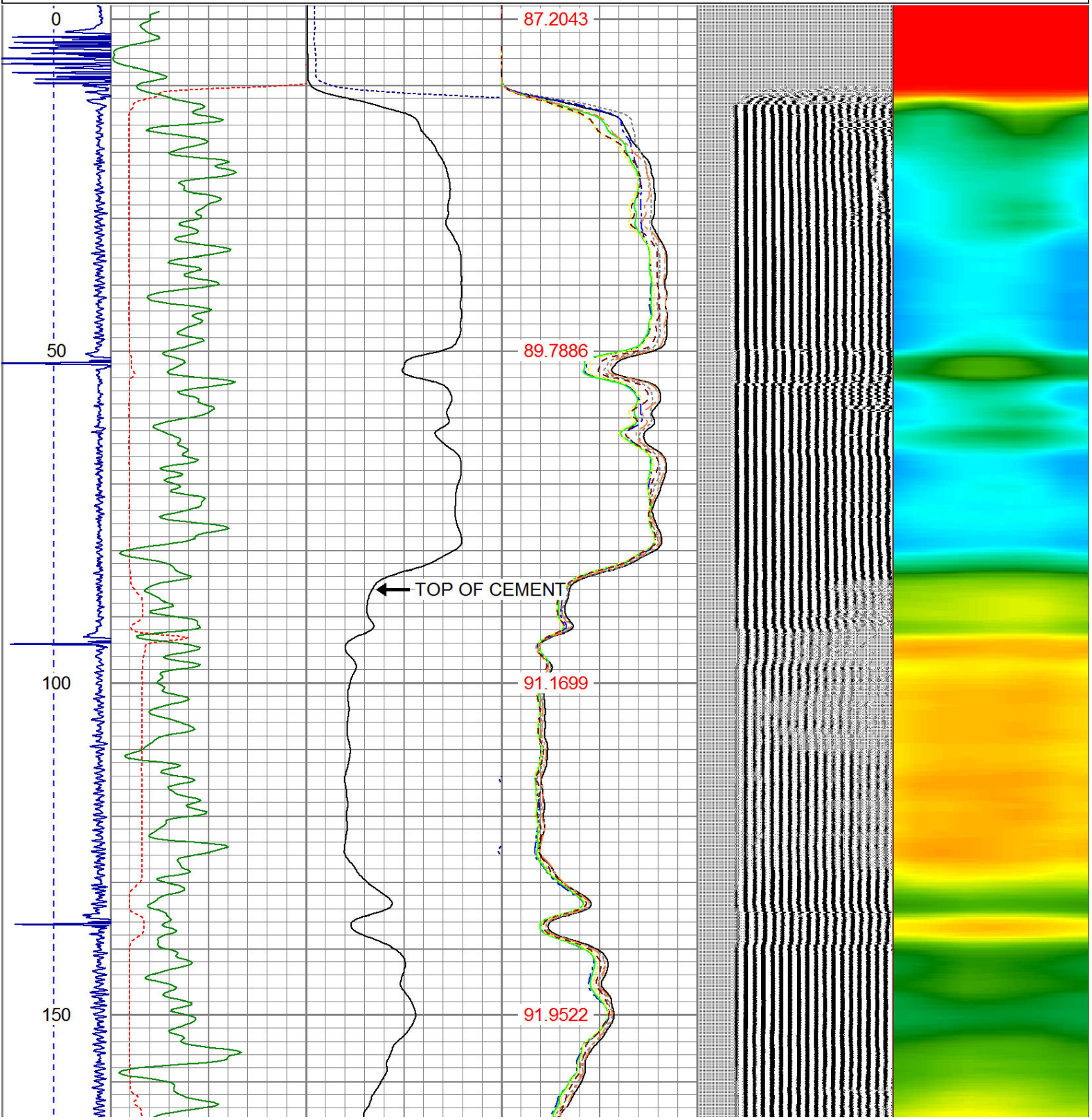
Comments

RAN CBL TO VERIFY CEMENT BOND  
THANK YOU FOR USING WARRIOR !!!!!!!

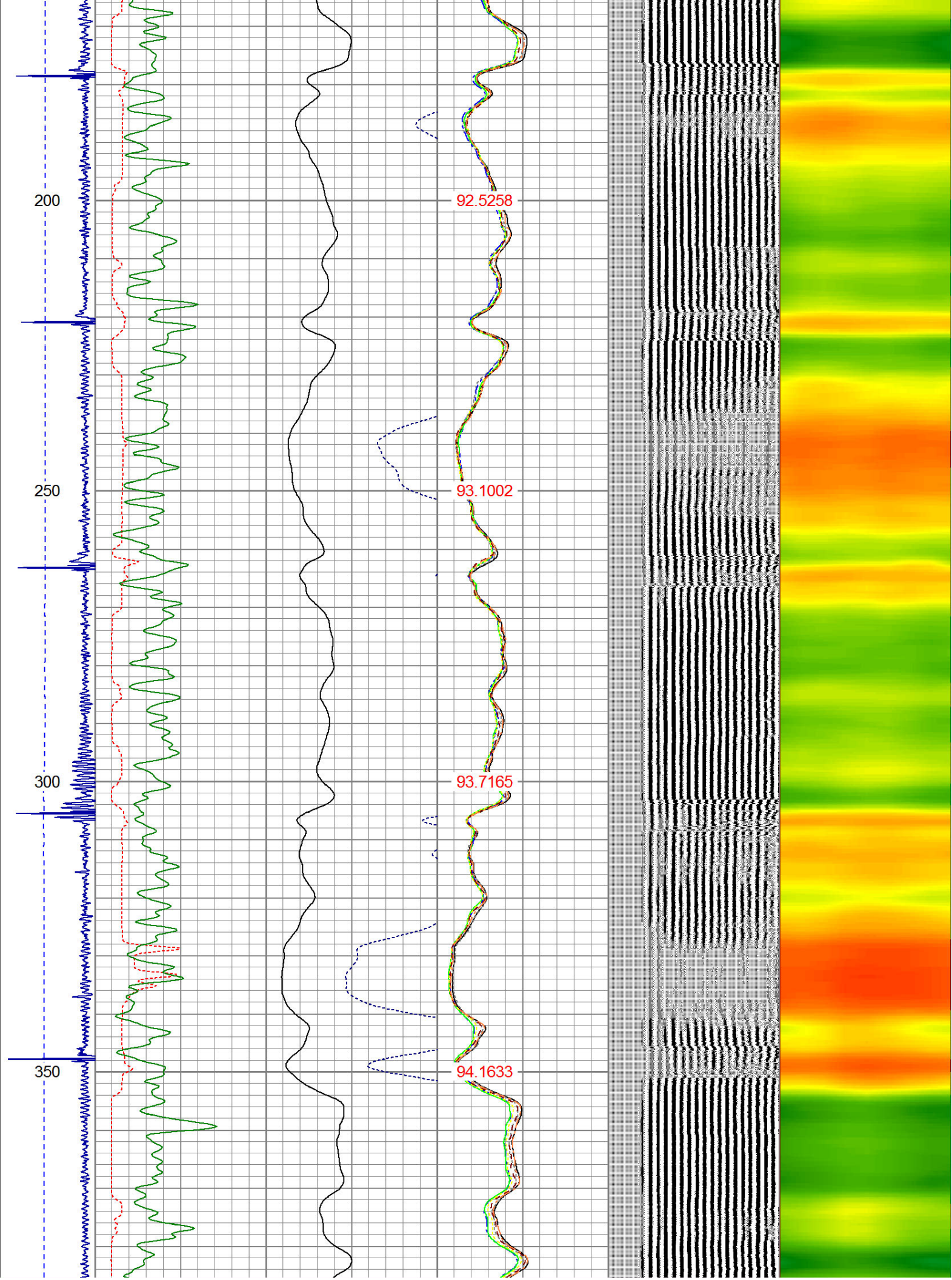
Sensor	Offset (ft)	Schematic	Description	Len (ft)	OD (in)	Wt (lb)
			1_4	1.00	1.36	5.00

			PTS275	2.83	2.75	
HEADVOLT	16.13					
IntTemp	14.71					
WVF3FT	11.46		RBT-Probe (Base) Probe Radii Bond Tool with Digital Telemetry	8.92	2.75	90.00
WVFCAL	11.46					
WVFS1	11.46					
WVFS2	11.46					
WVFS3	11.46					
WVFS4	11.46					
WVFS5	11.46					
WVFS6	11.46					
WVFS7	11.46					
WVFS8	11.46					
WVF5FT	10.46					
CNLSC	6.00		CNT-Probe_B (275) 6 bow centralizer	2.88	2.75	40.00
CNSSC	5.17					
CCL	3.64					
			GR-Probe (275) Probe 2.75"	4.33	2.75	30.00
GR	0.90					
Dataset: st acacius 18-35.db: field/well/run1/pass4 Total Length: 19.96 ft Total Weight: 165.00 lb O.D. 2.75 in						

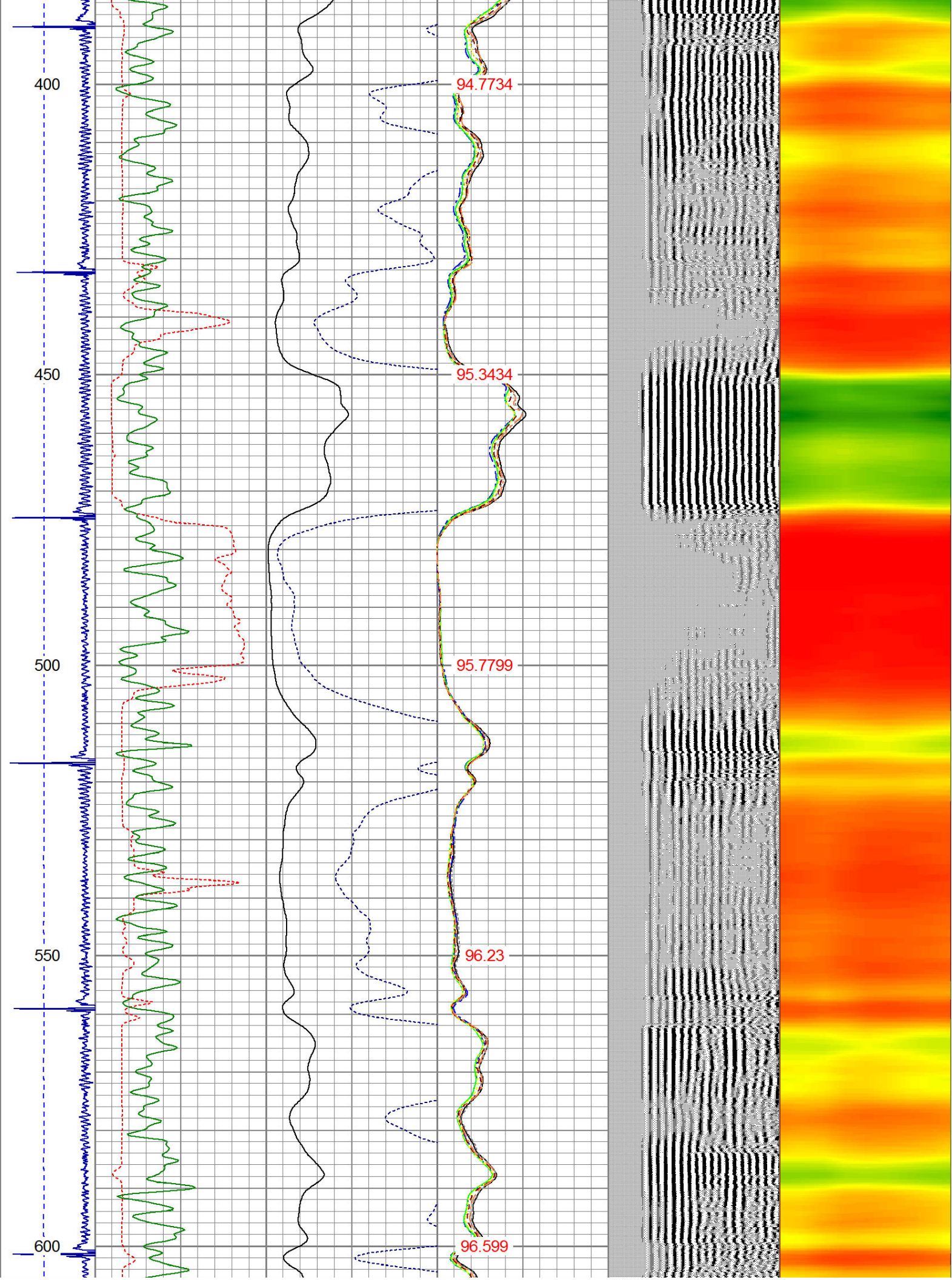
-9	CCL	1	200	TT (usec)	950	0	AMP (mV)	100	0	AMPS1	100	200	VDL	1200	1	Cement Map	8
LSPD			0	GR (GAPI)	200	0	AMPx5 (mV)	20	0	AMPS2	100				1		100
(ft/min)			200	GR (GAPI)	400				0	AMPS4	100						
0		250							0	AMPS5	100						
									0	AMPS6	100						
									0	AMPS7	100						
									0	AMPS8	100						
										IntTemp							
										(degF)							



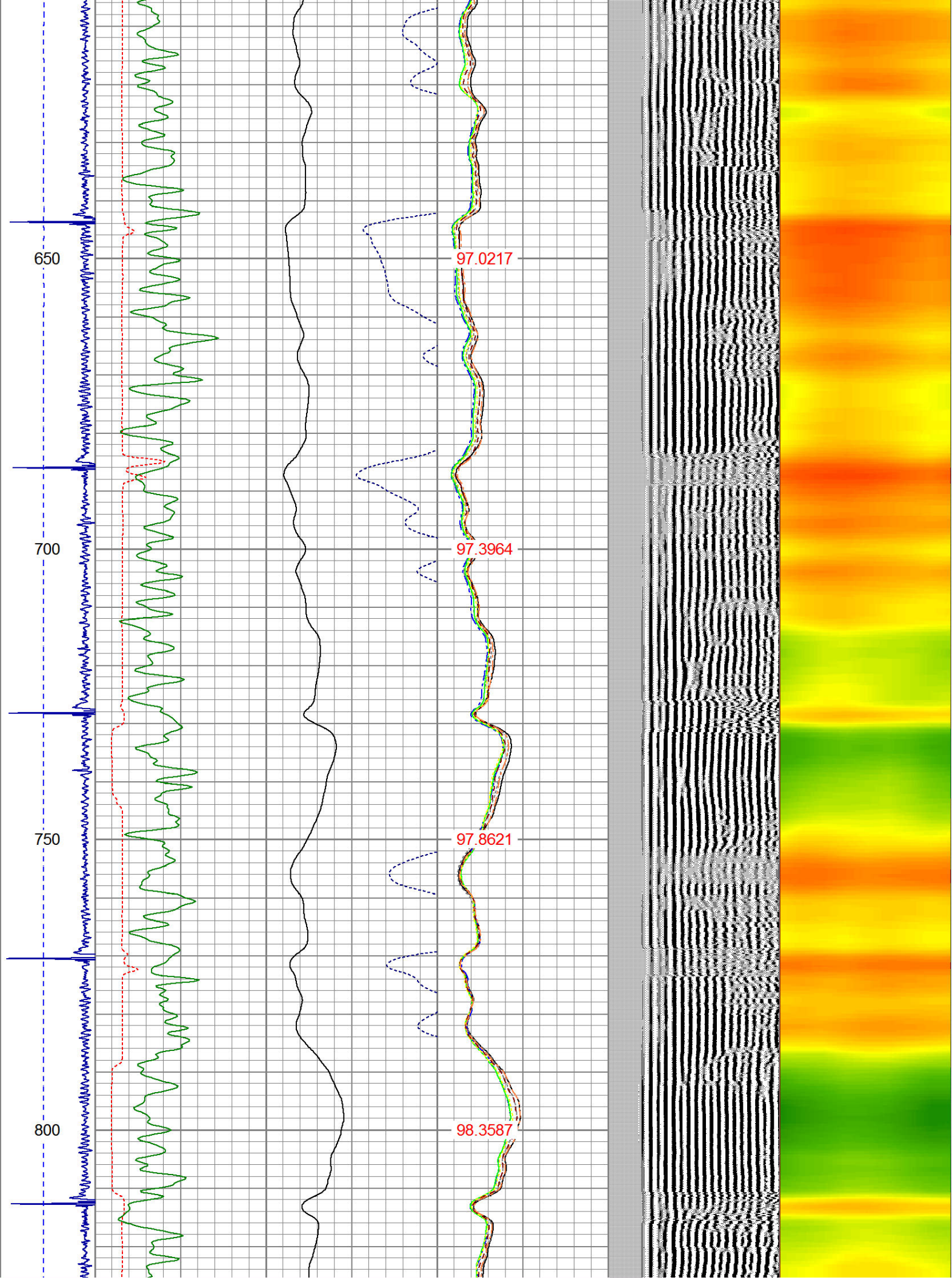




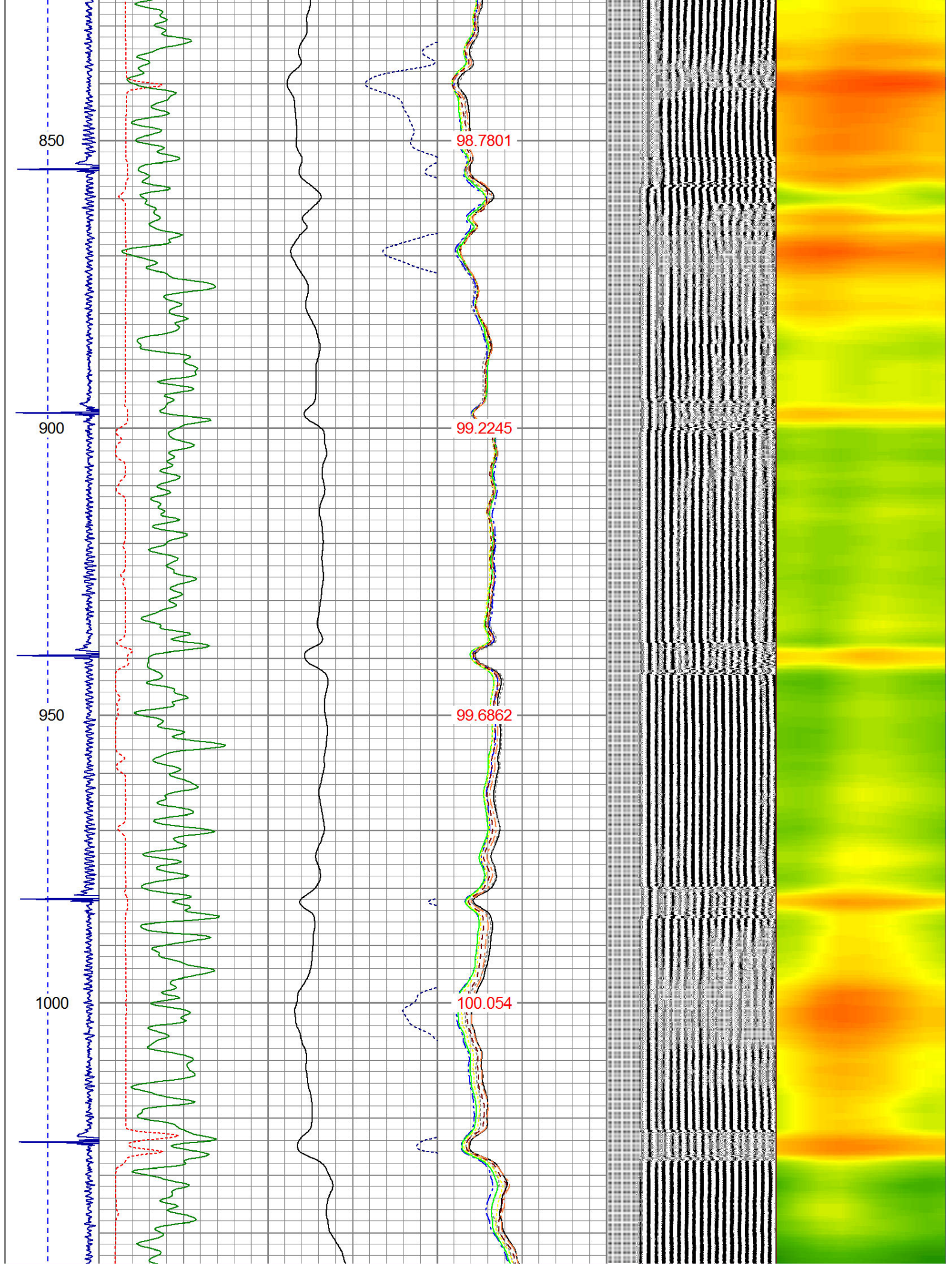




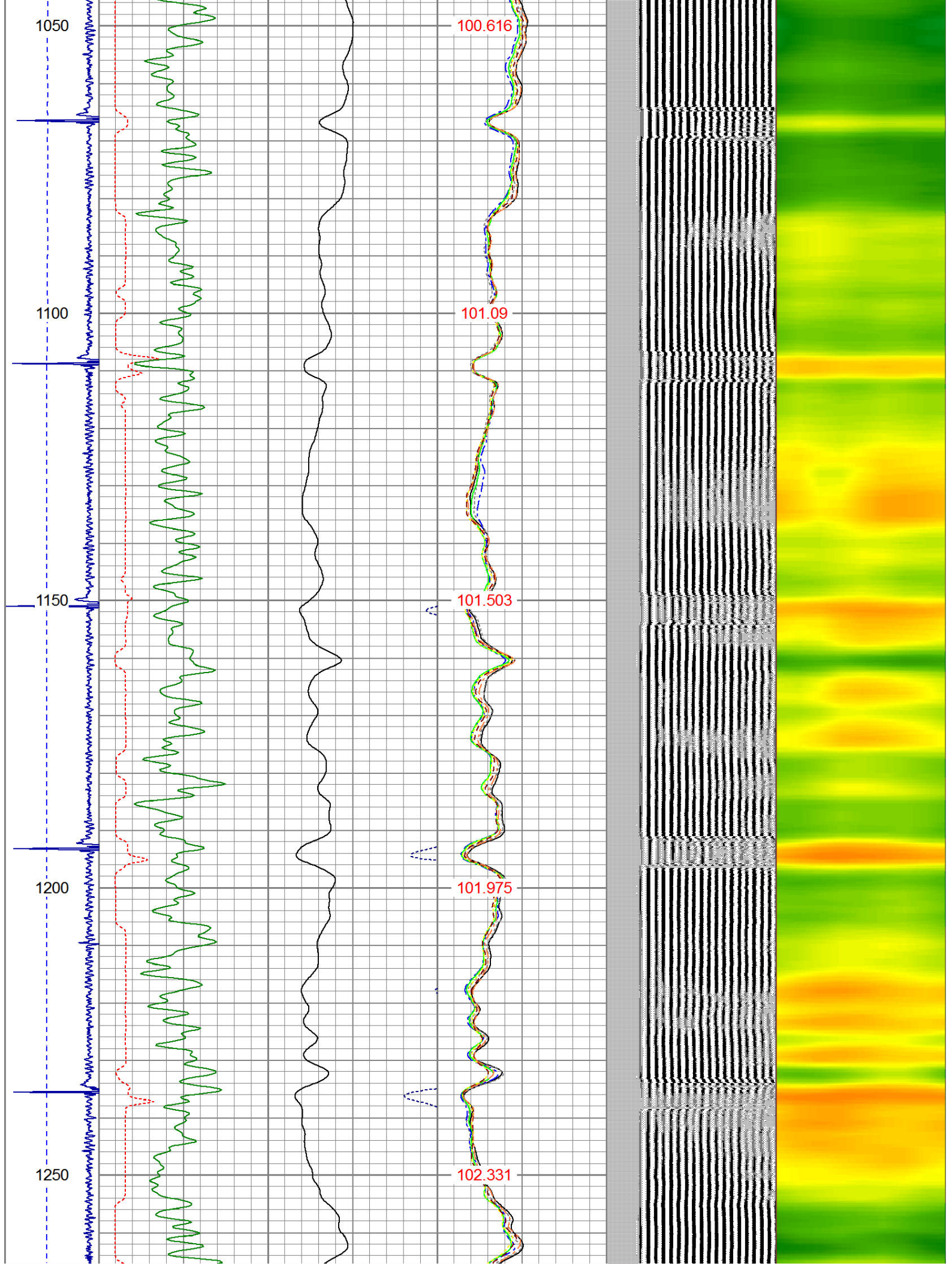




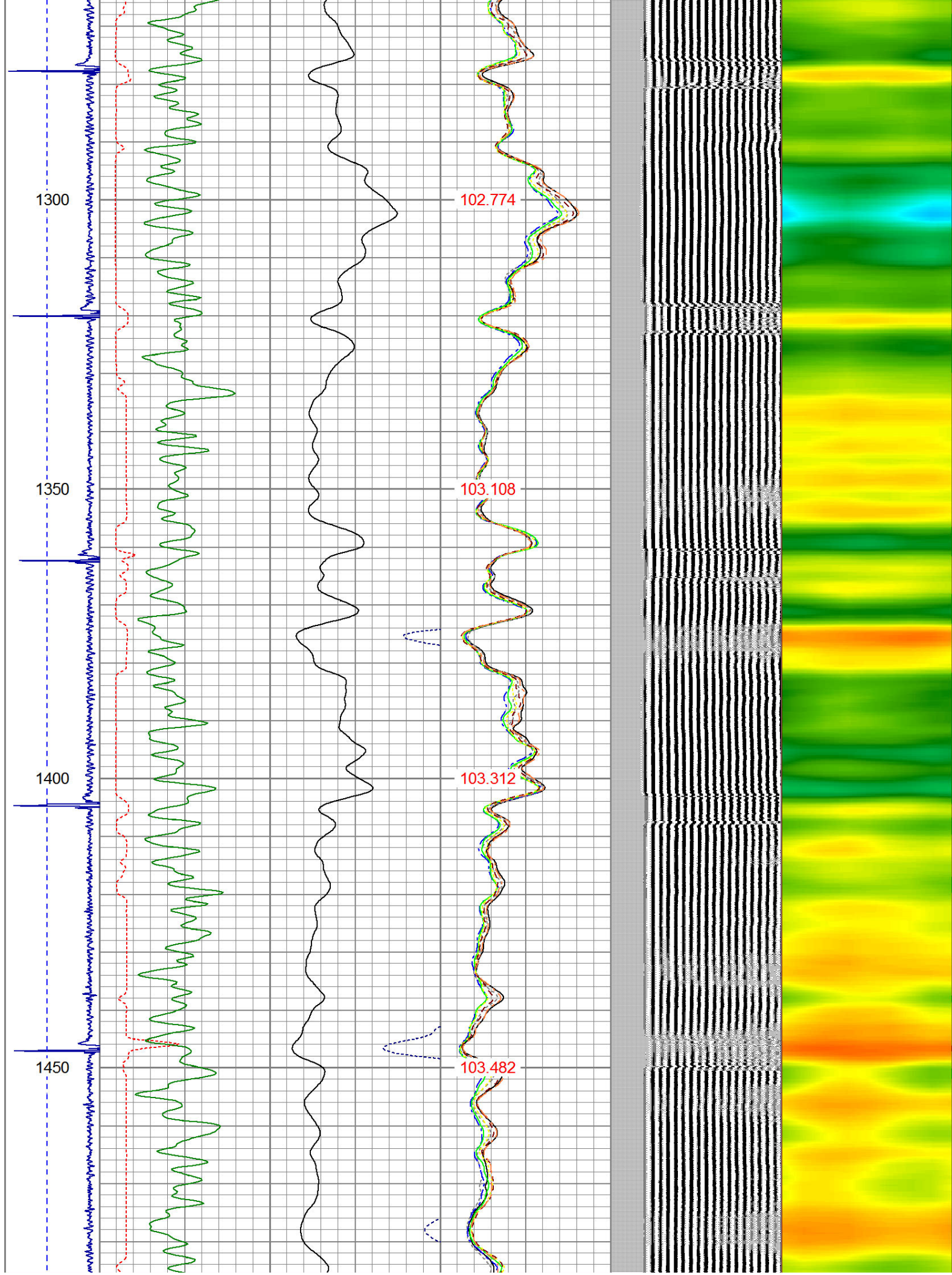




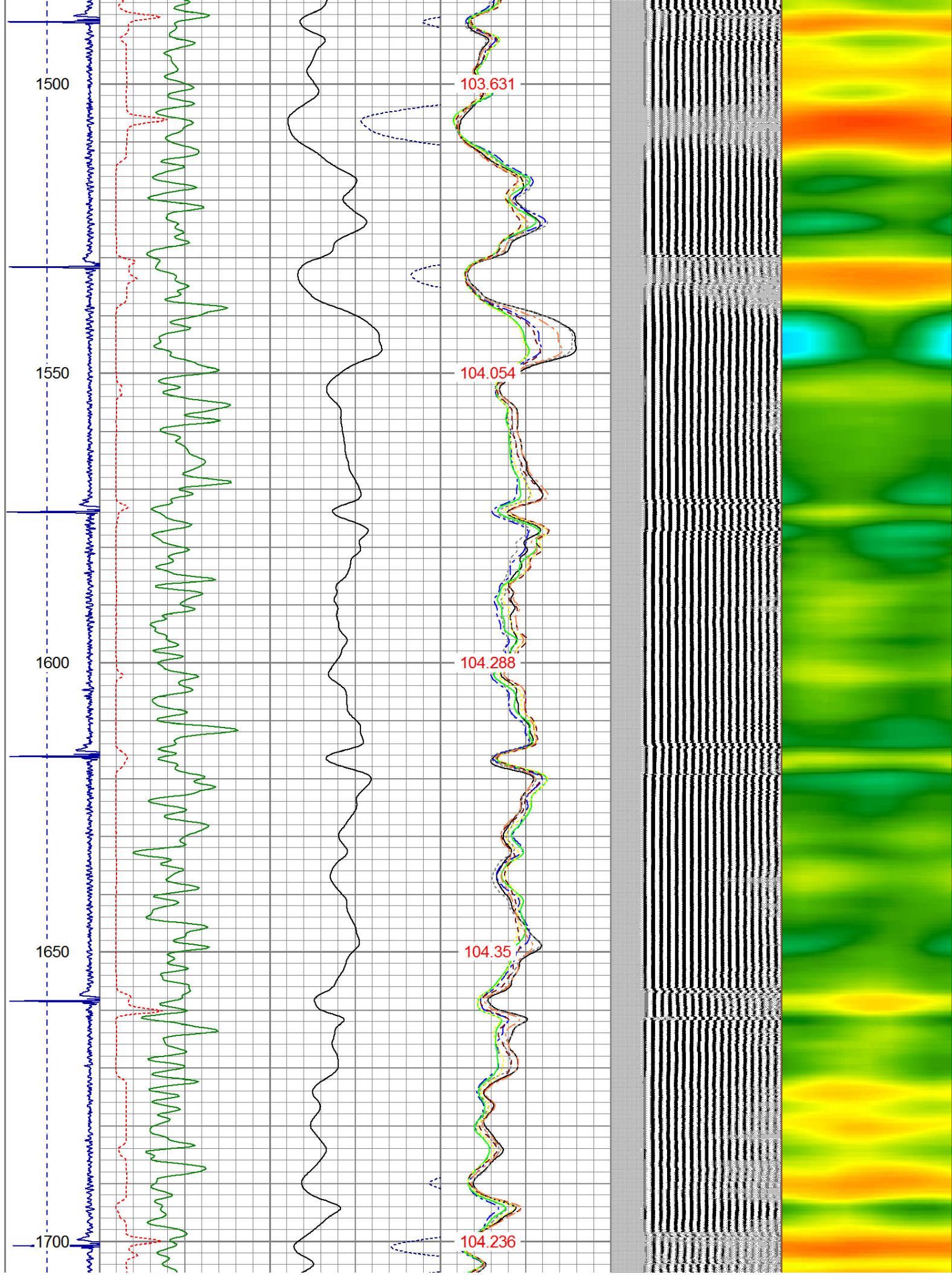




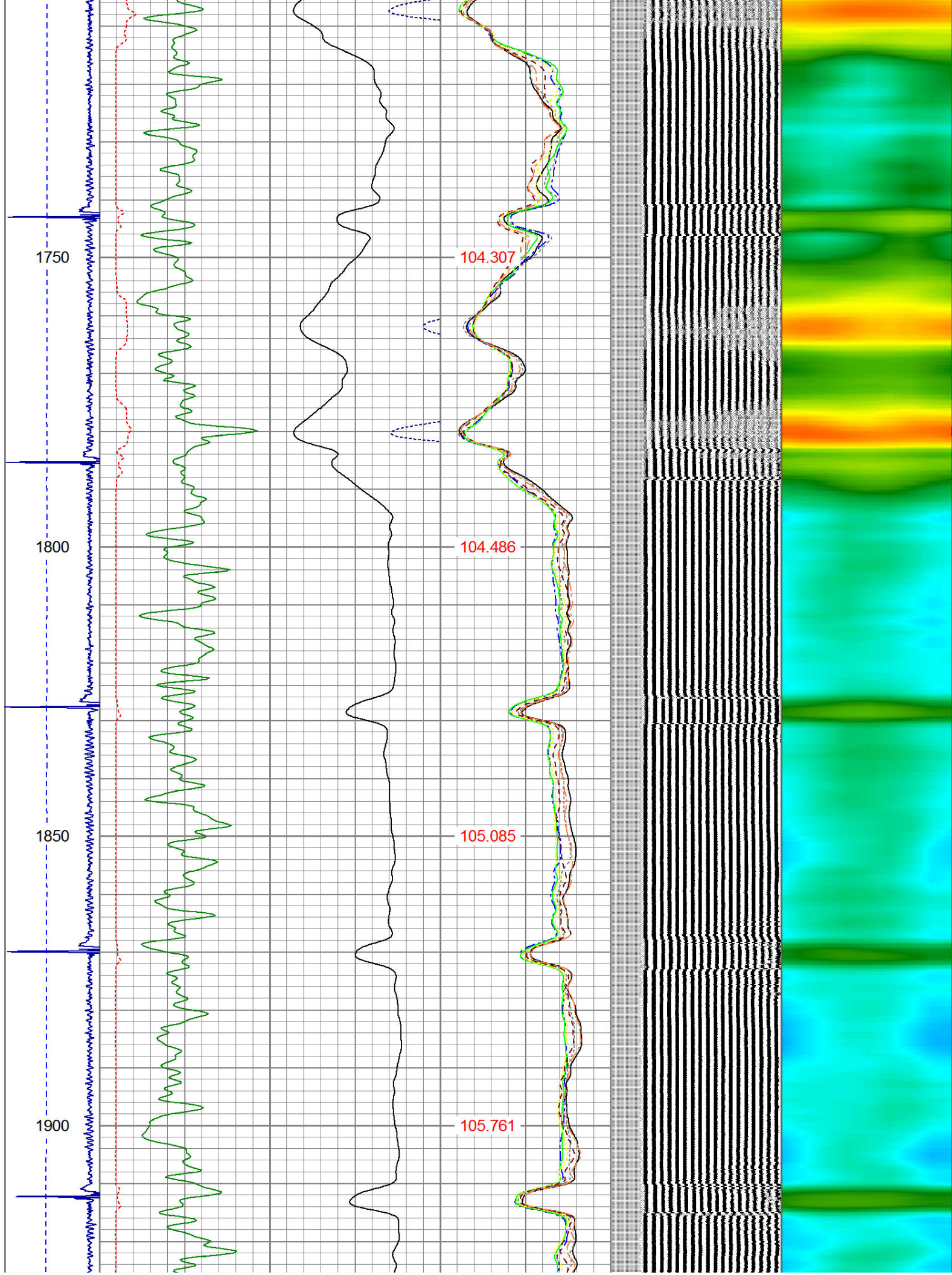




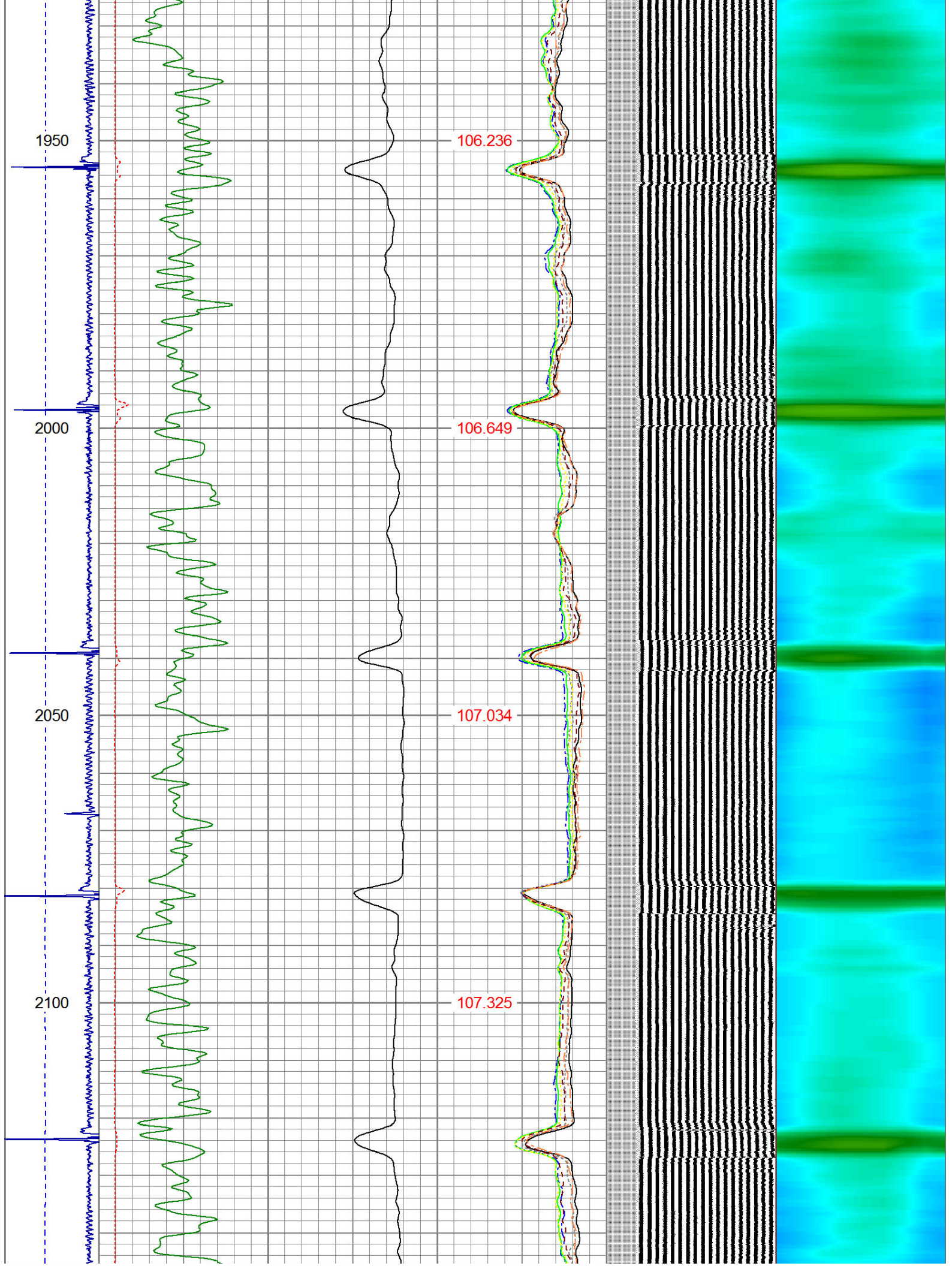




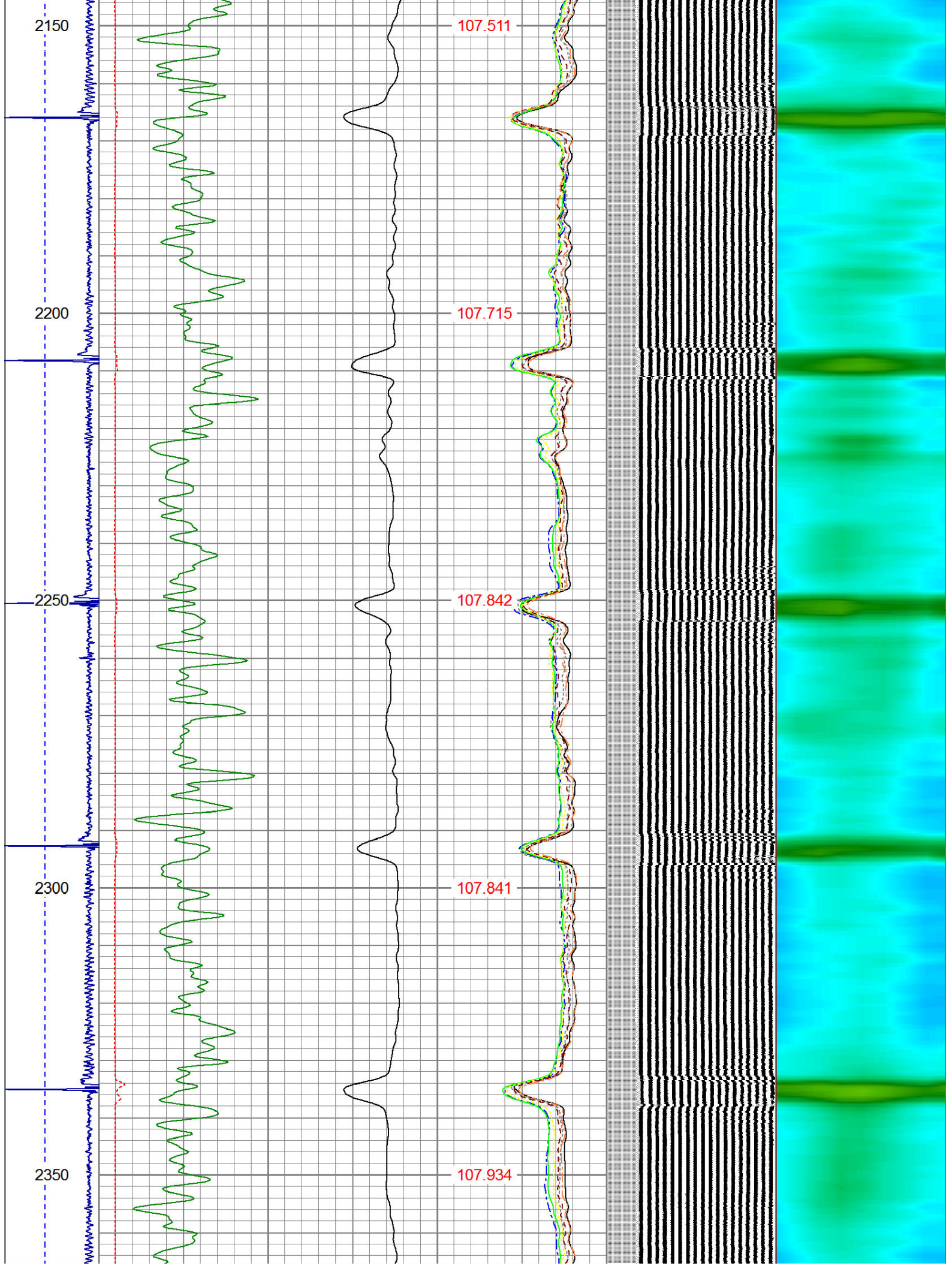




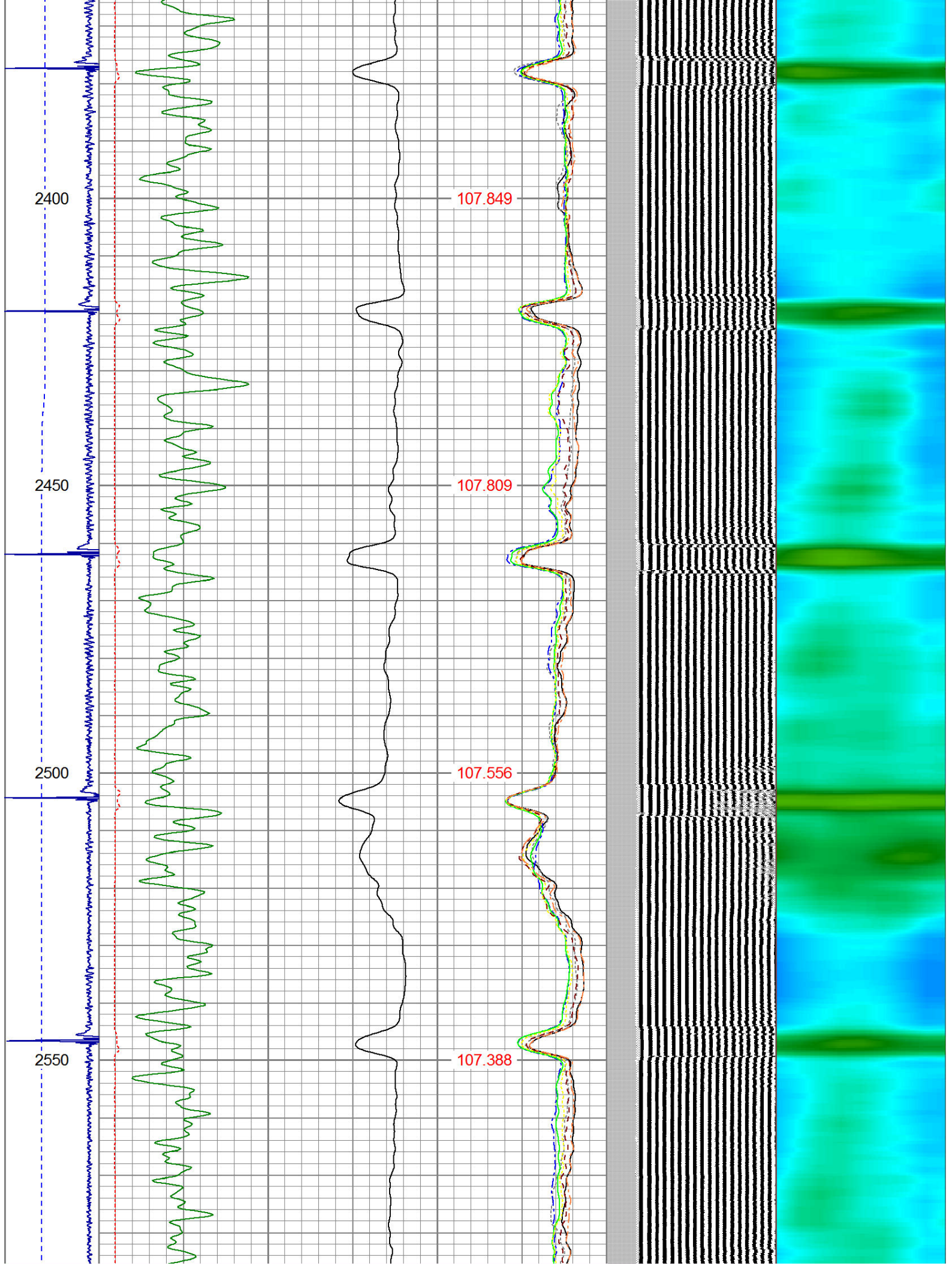




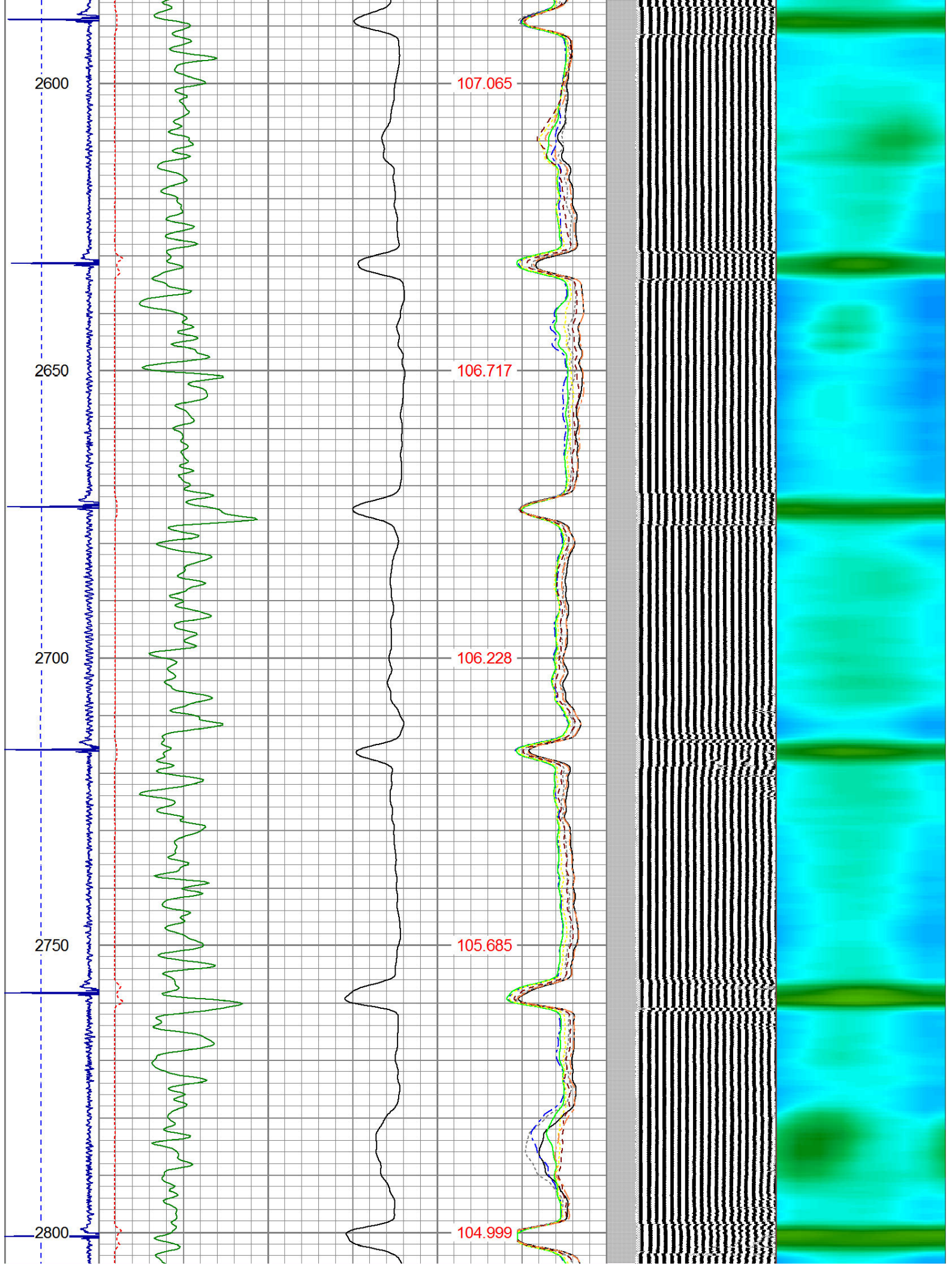




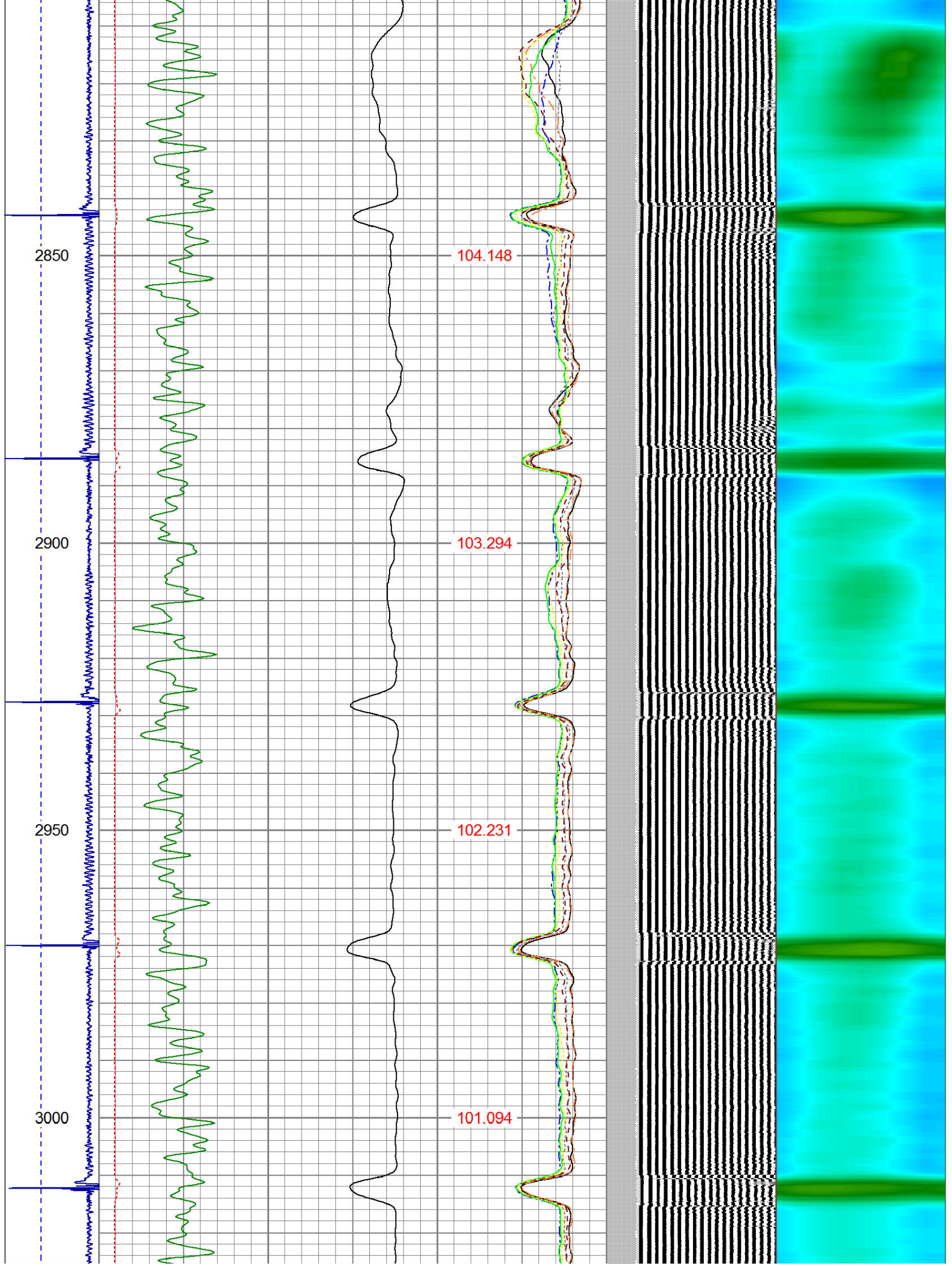




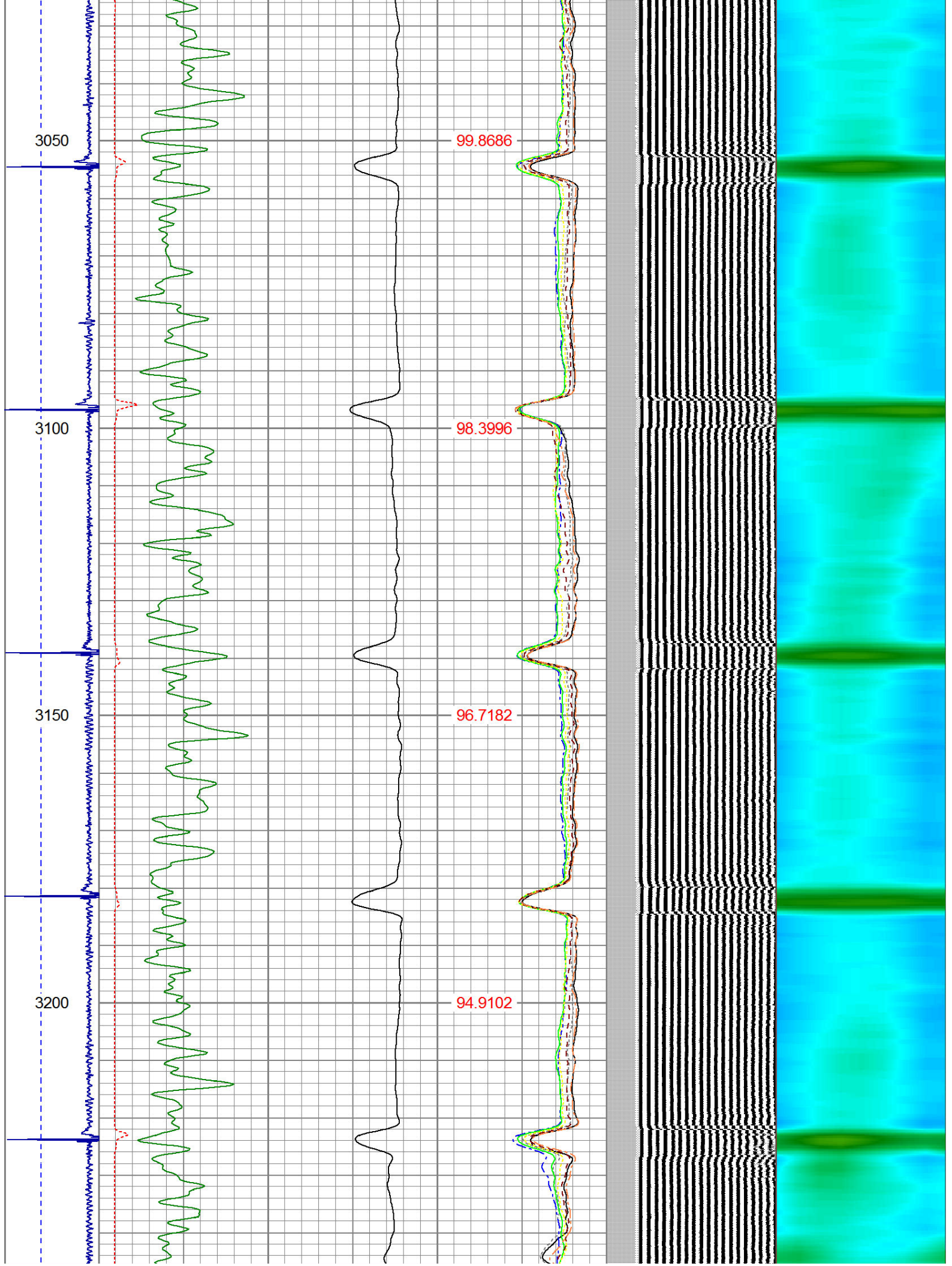




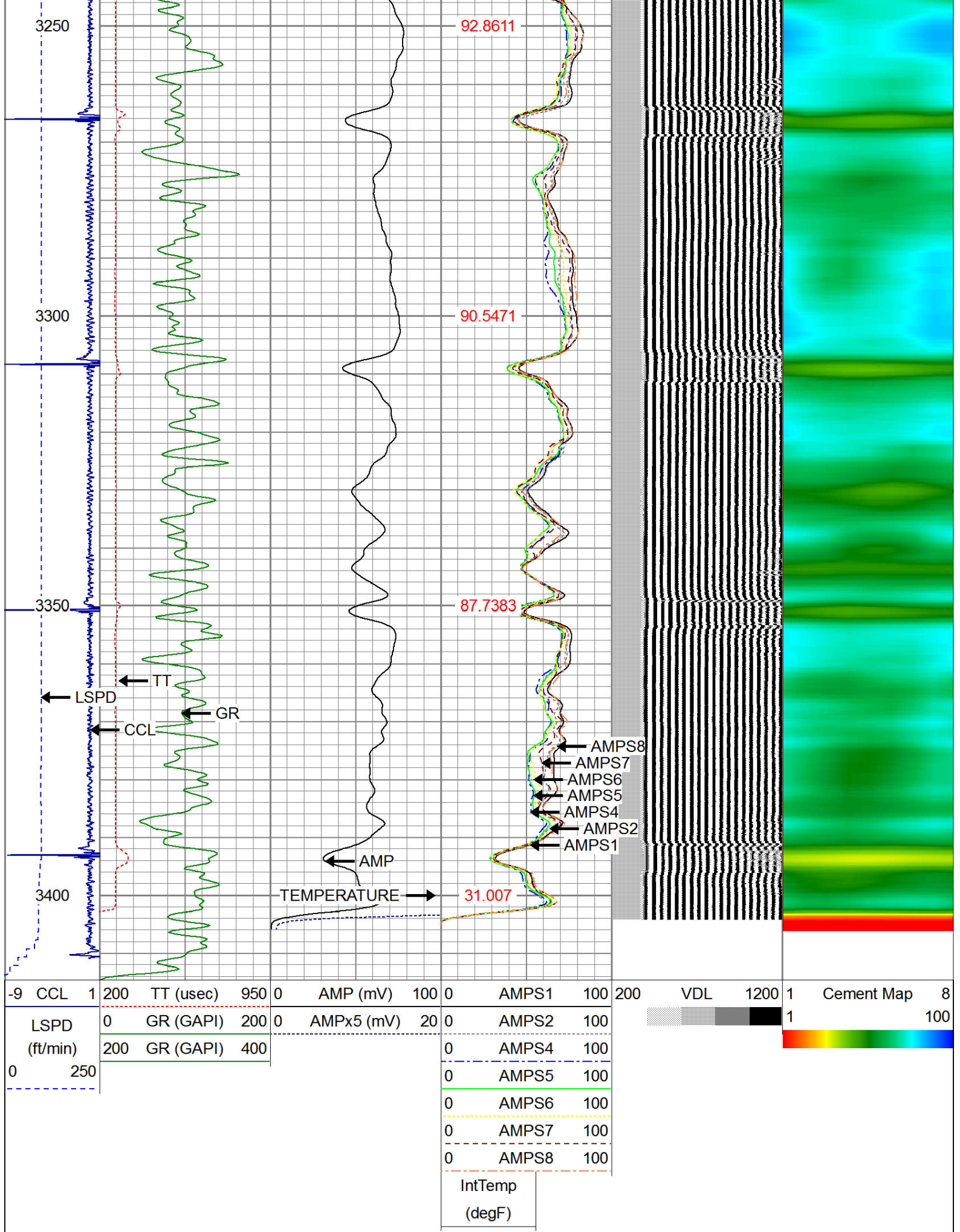
















Company KERR McGEE OIL AND GAS

Well ST. ACACIUS 18-35

Field WATTENBERG

County WELD

State CO