

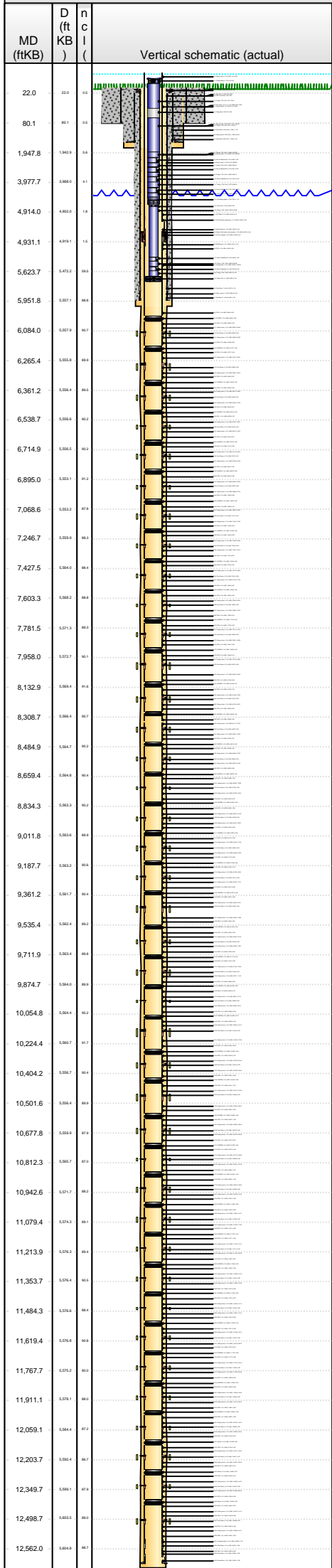


Lease Review

Well Name: RAZOR FEDERAL 26I-3513A

API Number 051233848600	WPC ID 1CO0761040	Well Permit Number	Field Name DJ Horizontal Niobrara	County Weld	State CO
Well Configuration Type Lateral/Horizontal	Orig KB Elv (ft) 4,738.00	Ground Elevation (ft) 4,717.00	Casing Flange Elevation (ft)	Tubing Head Elevation (ft)	Total Depth (ftKB) 12,585.0
Original Spud Date 7/9/2014	Completion Date 9/17/2014	Asset Group Redtail	Responsible Engineer Charles Ohlson	N/S Dist (ft) 2,242.0	N/S Ref FSL
				E/W Dist (ft) 728.0	E/W Ref FEL
Lot	Quarter 1 NE	Quarter 2 SE	Quarter 3	Quarter 4	Section 26
			Section Suffix	Section Type	Township 10 N
					Township N/S Dir N
					Range 58
					Range E/W Dir W
					Meridian

Lateral/Horizontal - Original Hole, 12/29/2014 1:15:00 PM



Wellbore Sections

Section Des	Wellbore Name	Start Date	Size (in)	Act Top (ftKB)	Act Btm (ftKB)
Conductor	Original Hole	3/28/2014	24	21.0	80.0
Surface	Original Hole	7/9/2014	13 1/2	80.0	1,551.0
Intermediate	Original Hole	7/11/2014	8 3/4	1,551.0	5,971.0
Lateral	Original Hole	7/14/2014	6 1/8	5,971.0	12,585.0

Conductor Pipe, 80.0ftKB

OD (in)	Wt (lb/ft)	Grade	Top (ftKB)	Btm (ftKB)	Len (ft)	Item Des
16	65.00	H-40	21.0	80.0	59.00	Casing (black)

Surface Csg, 1,530.9ftKB

OD (in)	Wt (lb/ft)	Grade	Top (ftKB)	Btm (ftKB)	Len (ft)	Item Des
9 5/8	36.00	J-55	21.0	21.0	0.00	Landing jt
9 5/8	36.00	J-55	21.0	22.0	1.00	Well head
9 5/8	36.00	J-55	22.0	27.0	5.00	PUP
9 5/8	36.00	J-55	27.0	1,485.1	1,458.07	Casing Joints
9 5/8	36.00	J-55	1,485.1	1,486.6	1.50	Float Collar
9 5/8	36.00	J-55	1,486.6	1,529.4	42.84	Casing Joints
9 5/8	36.00	J-55	1,529.4	1,530.9	1.50	Float Shoe

Frac String, 4,929.8ftKB

OD (in)	Wt (lb/ft)	Grade	Top (ftKB)	Btm (ftKB)	Len (ft)	Item Des
	11.60	HCP-110	-6.2	-4.3	1.96	Casing Hanger
4 1/2	11.60	HCP-110	-4.3	38.9	43.20	Casing Joints
4 1/2	11.60	HCP-110	38.9	57.9	19.00	Pup Joints, 10', 6', 3'
4 1/2	11.60	HCP-110	57.9	4,923.3	4,865.40	Casing Joints
4 1/2			4,923.3	4,929.8	6.44	Packers Plus Latch seal assembly

Intermediate Csg, 5,951.9ftKB

OD (in)	Wt (lb/ft)	Grade	Top (ftKB)	Btm (ftKB)	Len (ft)	Item Des
7	29.00	L-80	21.0	21.0	0.00	Landing Joint
7	29.00	L-80	21.0	22.0	1.00	Casing Hanger
7	29.00	L-80	22.0	27.0	5.00	Pup Joint
7	29.00	L-80	27.0	5,907.2	5,880.25	Casing Joints
7	29.00	L-80	5,907.2	5,908.5	1.25	Float Collar
7	29.00	L-80	5,908.5	5,950.4	41.93	Casing Joints
7	29.00	L-80	5,950.4	5,951.9	1.50	Float Shoe

Liner, 12,570.0ftKB

OD (in)	Wt (lb/ft)	Grade	Top (ftKB)	Btm (ftKB)	Len (ft)	Item Des
4 1/2	11.60	HCP-110	4,914.0	4,920.4	6.41	LIFT SUB
4 1/2	11.60	HCP-110	4,920.4	4,924.3	3.83	ARH Hydraulic seating tool
4 1/2	11.60	HCP-110	4,924.3	4,925.9	1.63	Setting Sleeve
4 1/2	11.60	HCP-110	4,925.9	4,931.2	5.34	SF Liner Hanger
4 1/2	11.60	HCP-110	4,931.2	4,932.5	1.25	BTM Couple
4 1/2	11.60	HCP-110	4,932.5	4,935.2	2.68	PUP
4 1/2	11.60	HCP-110	4,935.2	5,990.4	1,055.21	Casing Joints
4 1/2	11.60	HCP-110	5,990.4	5,996.4	6.06	PUP
4 1/2	11.60	HCP-110	5,996.4	6,000.4	3.96	PACKER
4 1/2	11.60	HCP-110	6,000.4	6,003.5	3.08	PUP
4 1/2	11.60	HCP-110	6,003.5	6,084.0	80.49	Casing Joints
4 1/2	11.60	HCP-110	6,084.0	6,086.6	2.59	Frac Sleeve
4 1/2	11.60	HCP-110	6,086.6	6,169.6	83.06	Casing Joints
4 1/2	11.60	HCP-110	6,169.6	6,175.7	6.08	PUP
4 1/2	11.60	HCP-110	6,175.7	6,179.7	3.96	PACKER
4 1/2	11.60	HCP-110	6,179.7	6,182.7	3.08	PUP
4 1/2	11.60	HCP-110	6,182.7	6,265.6	82.81	Casing Joints
4 1/2	11.60	HCP-110	6,265.6	6,268.2	2.60	Frac Sleeve
4 1/2	11.60	HCP-110	6,268.2	6,348.3	80.16	Casing Joints



Lease Review

Well Name: RAZOR FEDERAL 26I-3513A

API Number 051233848600	WPC ID 1CO0761040	Well Permit Number	Field Name DJ Horizontal Niobrara	County Weld	State CO
Well Configuration Type Lateral/Horizontal	Orig KB Elv (ft) 4,738.00	Ground Elevation (ft) 4,717.00	Casing Flange Elevation (ft)	Tubing Head Elevation (ft)	Total Depth (ftKB) 12,585.0
Original Spud Date 7/9/2014	Completion Date 9/17/2014	Asset Group Redtail	Responsible Engineer Charles Ohlson	N/S Dist (ft) 2,242.0	N/S Ref FSL
				E/W Dist (ft) 728.0	E/W Ref FEL
Lot	Quarter 1 NE	Quarter 2 SE	Quarter 3	Quarter 4	Section 26
					Section Suffix
					Section Type
					Township 10 N
					Township N/S Dir 58
					Range W
					Meridian

Lateral/Horizontal - Original Hole, 12/29/2014 1:15:03 PM			OD (in)	Wt (lb/ft)	Grade	Top (ftKB)	Btm (ftKB)	Len (ft)	Item Des
MD (ftKB)	D (ft KB)	n c l ()	4 1/2	11.60	HCP-110	6,348.3	6,354.4	6.07	PUP
			4 1/2	11.60	HCP-110	6,354.4	6,358.3	3.95	PACKER
			4 1/2	11.60	HCP-110	6,358.3	6,361.4	3.05	PUP
			4 1/2	11.60	HCP-110	6,361.4	6,443.9	82.56	Casing Joints
			4 1/2	11.60	HCP-110	6,443.9	6,446.6	2.61	Frac Sleeve
			4 1/2	11.60	HCP-110	6,446.6	6,525.6	79.03	Casing Joints
			4 1/2	11.60	HCP-110	6,525.6	6,531.7	6.07	PUP
			4 1/2	11.60	HCP-110	6,531.7	6,535.6	3.94	PACKER
			4 1/2	11.60	HCP-110	6,535.6	6,538.7	3.07	PUP
			4 1/2	11.60	HCP-110	6,538.7	6,619.2	80.57	Casing Joints
			4 1/2	11.60	HCP-110	6,619.2	6,621.8	2.60	Frac Sleeve
			4 1/2	11.60	HCP-110	6,621.8	6,701.8	79.97	Casing Joints
			4 1/2	11.60	HCP-110	6,701.8	6,707.9	6.07	PUP
			4 1/2	11.60	HCP-110	6,707.9	6,711.8	3.96	PACKER
			4 1/2	11.60	HCP-110	6,711.8	6,714.9	3.05	PUP
			4 1/2	11.60	HCP-110	6,714.9	6,797.3	82.42	Casing Joints
			4 1/2	11.60	HCP-110	6,797.3	6,799.9	2.61	Frac Sleeve
			4 1/2	11.60	HCP-110	6,799.9	6,881.7	81.83	Casing Joints
			4 1/2	11.60	HCP-110	6,881.7	6,887.8	6.07	PUP
			4 1/2	11.60	HCP-110	6,887.8	6,891.8	3.96	PACKER
			4 1/2	11.60	HCP-110	6,891.8	6,894.9	3.09	PUP
			4 1/2	11.60	HCP-110	6,894.9	6,978.2	83.33	Casing Joints
			4 1/2	11.60	HCP-110	6,978.2	6,980.8	2.60	Frac Sleeve
			4 1/2	11.60	HCP-110	6,980.8	7,055.9	75.15	Casing Joints
			4 1/2	11.60	HCP-110	7,055.9	7,062.0	6.06	PUP
			4 1/2	11.60	HCP-110	7,062.0	7,066.0	3.96	PACKER
			4 1/2	11.60	HCP-110	7,066.0	7,068.7	2.76	PUP
			4 1/2	11.60	HCP-110	7,068.7	7,151.4	82.63	Casing Joints
			4 1/2	11.60	HCP-110	7,151.4	7,154.0	2.61	Frac Sleeve
			4 1/2	11.60	HCP-110	7,154.0	7,233.5	79.55	Casing Joints
			4 1/2	11.60	HCP-110	7,233.5	7,239.6	6.06	PUP
			4 1/2	11.60	HCP-110	7,239.6	7,243.5	3.95	PACKER
			4 1/2	11.60	HCP-110	7,243.5	7,246.6	3.06	PUP
			4 1/2	11.60	HCP-110	7,246.6	7,329.4	82.83	Casing Joints
			4 1/2	11.60	HCP-110	7,329.4	7,332.1	2.65	Frac Sleeve
			4 1/2	11.60	HCP-110	7,332.1	7,414.3	82.19	Casing Joints
			4 1/2	11.60	HCP-110	7,414.3	7,420.3	6.07	PUP
			4 1/2	11.60	HCP-110	7,420.3	7,424.3	3.96	PACKER
			4 1/2	11.60	HCP-110	7,424.3	7,427.4	3.07	PUP



Lease Review

Well Name: RAZOR FEDERAL 26I-3513A

API Number 051233848600	WPC ID 1CO0761040	Well Permit Number	Field Name DJ Horizontal Niobrara	County Weld	State CO
Well Configuration Type Lateral/Horizontal	Orig KB Elv (ft) 4,738.00	Ground Elevation (ft) 4,717.00	Casing Flange Elevation (ft)	Tubing Head Elevation (ft)	Total Depth (ftKB) 12,585.0
Original Spud Date 7/9/2014	Completion Date 9/17/2014	Asset Group Redtail	Responsible Engineer Charles Ohlson	N/S Dist (ft) 2,242.0	N/S Ref FSL
				E/W Dist (ft) 728.0	E/W Ref FEL
Lot	Quarter 1 NE	Quarter 2 SE	Quarter 3	Quarter 4	Section 26
					Section Suffix
					Section Type
					Township 10 N
					Township N/S Dir N
					Range 58
					Range E/W Dir W
					Meridian

Lateral/Horizontal - Original Hole, 12/29/2014 1:15:06 PM			OD (in)	Wt (lb/ft)	Grade	Top (ftKB)	Btm (ftKB)	Len (ft)	Item Des
MD (ftKB)	D (ft KB)	n c l ()	4 1/2	11.60	HCP-110	7,427.4	7,510.2	82.83	Casing Joints
			4 1/2	11.60	HCP-110	7,510.2	7,512.8	2.60	Frac Sleeve
22.0	22.0	0.0	4 1/2	11.60	HCP-110	7,512.8	7,590.3	77.54	Casing Joints
80.1	80.1	0.0	4 1/2	11.60	HCP-110	7,590.3	7,596.4	6.07	PUP
1,947.8	1,947.8	0.0	4 1/2	11.60	HCP-110	7,596.4	7,600.4	3.96	PACKER
3,977.7	3,977.7	0.0	4 1/2	11.60	HCP-110	7,600.4	7,603.4	3.05	PUP
4,914.0	4,914.0	0.0	4 1/2	11.60	HCP-110	7,603.4	7,685.9	82.54	Casing Joints
4,931.1	4,931.1	0.0	4 1/2	11.60	HCP-110	7,685.9	7,688.5	2.60	Frac Sleeve
5,623.7	5,623.7	0.0	4 1/2	11.60	HCP-110	7,688.5	7,768.2	79.70	Casing Joints
5,951.8	5,951.8	0.0	4 1/2	11.60	HCP-110	7,768.2	7,774.3	6.10	PUP
6,084.0	6,084.0	0.0	4 1/2	11.60	HCP-110	7,774.3	7,778.3	3.96	PACKER
6,265.4	6,265.4	0.0	4 1/2	11.60	HCP-110	7,778.3	7,781.4	3.06	PUP
6,361.2	6,361.2	0.0	4 1/2	11.60	HCP-110	7,781.4	7,781.4	0.00	
6,538.7	6,538.7	0.0	4 1/2	11.60	HCP-110	7,781.4	7,859.5	78.18	Casing Joints
6,714.9	6,714.9	0.0	4 1/2	11.60	HCP-110	7,859.5	7,862.1	2.60	Frac Sleeve
6,895.0	6,895.0	0.0	4 1/2	11.60	HCP-110	7,862.1	7,944.7	82.60	Casing Joints
7,068.6	7,068.6	0.0	4 1/2	11.60	HCP-110	7,944.7	7,950.8	6.06	PUP
7,246.7	7,246.7	0.0	4 1/2	11.60	HCP-110	7,950.8	7,954.8	3.96	PACKER
7,427.5	7,427.5	0.0	4 1/2	11.60	HCP-110	7,954.8	7,957.9	3.12	PUP
7,603.3	7,603.3	0.0	4 1/2	11.60	HCP-110	7,957.9	8,037.9	80.06	Casing Joints
7,781.5	7,781.5	0.0	4 1/2	11.60	HCP-110	8,037.9	8,040.5	2.60	Frac Sleeve
7,958.0	7,958.0	0.0	4 1/2	11.60	HCP-110	8,040.5	8,122.9	82.35	Casing Joints
8,132.9	8,132.9	0.0	4 1/2	11.60	HCP-110	8,122.9	8,129.0	6.08	PUP
8,308.7	8,308.7	0.0	4 1/2	11.60	HCP-110	8,129.0	8,132.9	3.97	PACKER
8,484.9	8,484.9	0.0	4 1/2	11.60	HCP-110	8,132.9	8,136.0	3.10	PUP
8,659.4	8,659.4	0.0	4 1/2	11.60	HCP-110	8,136.0	8,215.6	79.55	Casing Joints
8,834.3	8,834.3	0.0	4 1/2	11.60	HCP-110	8,215.6	8,218.2	2.58	Frac Sleeve
9,011.8	9,011.8	0.0	4 1/2	11.60	HCP-110	8,218.2	8,298.5	80.37	Casing Joints
9,187.7	9,187.7	0.0	4 1/2	11.60	HCP-110	8,298.5	8,304.6	6.09	PUP
9,361.2	9,361.2	0.0	4 1/2	11.60	HCP-110	8,304.6	8,308.6	3.96	PACKER
9,535.4	9,535.4	0.0	4 1/2	11.60	HCP-110	8,308.6	8,311.7	3.09	PUP
9,711.9	9,711.9	0.0	4 1/2	11.60	HCP-110	8,311.7	8,392.8	81.07	Casing Joints
9,874.7	9,874.7	0.0	4 1/2	11.60	HCP-110	8,392.8	8,395.3	2.59	Frac Sleeve
10,054.8	10,054.8	0.0	4 1/2	11.60	HCP-110	8,395.3	8,475.0	79.62	Casing Joints
10,224.4	10,224.4	0.0	4 1/2	11.60	HCP-110	8,475.0	8,481.0	6.07	PUP
10,404.2	10,404.2	0.0	4 1/2	11.60	HCP-110	8,481.0	8,485.0	3.95	PACKER
10,501.6	10,501.6	0.0	4 1/2	11.60	HCP-110	8,485.0	8,488.0	3.06	PUP
10,677.8	10,677.8	0.0	4 1/2	11.60	HCP-110	8,488.0	8,565.0	76.93	Casing Joints
10,812.3	10,812.3	0.0	4 1/2	11.60	HCP-110	8,565.0	8,567.6	2.59	Frac Sleeve
10,942.6	10,942.6	0.0	4 1/2	11.60	HCP-110	8,567.6	8,649.5	81.96	Casing Joints
11,079.4	11,079.4	0.0	4 1/2	11.60	HCP-110				
11,213.9	11,213.9	0.0	4 1/2	11.60	HCP-110				
11,353.7	11,353.7	0.0	4 1/2	11.60	HCP-110				
11,484.3	11,484.3	0.0	4 1/2	11.60	HCP-110				
11,619.4	11,619.4	0.0	4 1/2	11.60	HCP-110				
11,767.7	11,767.7	0.0	4 1/2	11.60	HCP-110				
11,911.1	11,911.1	0.0	4 1/2	11.60	HCP-110				
12,059.1	12,059.1	0.0	4 1/2	11.60	HCP-110				
12,203.7	12,203.7	0.0	4 1/2	11.60	HCP-110				
12,349.7	12,349.7	0.0	4 1/2	11.60	HCP-110				
12,498.7	12,498.7	0.0	4 1/2	11.60	HCP-110				
12,562.0	12,562.0	0.0	4 1/2	11.60	HCP-110				



Lease Review

Well Name: RAZOR FEDERAL 26I-3513A

API Number 051233848600	WPC ID 1CO0761040	Well Permit Number	Field Name DJ Horizontal Niobrara	County Weld	State CO
Well Configuration Type Lateral/Horizontal	Orig KB Elv (ft) 4,738.00	Ground Elevation (ft) 4,717.00	Casing Flange Elevation (ft)	Tubing Head Elevation (ft)	Total Depth (ftKB) 12,585.0
Original Spud Date 7/9/2014	Completion Date 9/17/2014	Asset Group Redtail	Responsible Engineer Charles Ohlson	N/S Dist (ft) 2,242.0	N/S Ref FSL
				E/W Dist (ft) 728.0	E/W Ref FEL
Lot	Quarter 1 NE	Quarter 2 SE	Quarter 3	Quarter 4	Section 26
					Section Suffix
					Section Type
					Township 10 N
					Township N/S Dir N
					Range 58
					Range E/W Dir W
					Meridian

Lateral/Horizontal - Original Hole, 12/29/2014 1:15:09 PM			OD (in)	Wt (lb/ft)	Grade	Top (ftKB)	Btm (ftKB)	Len (ft)	Item Des
MD (ftKB)	D (ft KB)	n c l ()	4 1/2	11.60	HCP-110	8,649.5	8,655.6	6.06	PUP
			4 1/2	11.60	HCP-110	8,655.6	8,659.5	3.94	PACKER
			4 1/2	11.60	HCP-110	8,659.5	8,662.6	3.03	PUP
			4 1/2	11.60	HCP-110	8,662.6	8,739.4	76.88	Casing Joints
			4 1/2	11.60	HCP-110	8,739.4	8,742.0	2.60	Frac Sleeve
			4 1/2	11.60	HCP-110	8,742.0	8,824.3	82.24	Casing Joints
			4 1/2	11.60	HCP-110	8,824.3	8,830.3	6.07	PUP
			4 1/2	11.60	HCP-110	8,830.3	8,834.3	3.96	PACKER
			4 1/2	11.60	HCP-110	8,834.3	8,837.4	3.08	PUP
			4 1/2	11.60	HCP-110	8,837.4	8,918.6	81.20	Casing Joints
			4 1/2	11.60	HCP-110	8,918.6	8,921.2	2.59	Frac Sleeve
			4 1/2	11.60	HCP-110	8,921.2	9,001.8	80.67	Casing Joints
			4 1/2	11.60	HCP-110	9,001.8	9,007.9	6.06	PUP
			4 1/2	11.60	HCP-110	9,007.9	9,011.9	3.96	PACKER
			4 1/2	11.60	HCP-110	9,011.9	9,015.0	3.09	PUP
			4 1/2	11.60	HCP-110	9,015.0	9,092.3	77.30	Casing Joints
			4 1/2	11.60	HCP-110	9,092.3	9,094.9	2.60	Frac Sleeve
			4 1/2	11.60	HCP-110	9,094.9	9,177.8	82.96	Casing Joints
			4 1/2	11.60	HCP-110	9,177.8	9,183.9	6.06	PUP
			4 1/2	11.60	HCP-110	9,183.9	9,187.8	3.95	PACKER
			4 1/2	11.60	HCP-110	9,187.8	9,190.9	3.10	PUP
			4 1/2	11.60	HCP-110	9,190.9	9,271.4	80.52	Casing Joints
			4 1/2	11.60	HCP-110	9,271.4	9,274.0	2.60	Frac Sleeve
			4 1/2	11.60	HCP-110	9,274.0	9,351.4	77.31	Casing Joints
			4 1/2	11.60	HCP-110	9,351.4	9,357.4	6.06	PUP
			4 1/2	11.60	HCP-110	9,357.4	9,361.4	3.95	PACKER
			4 1/2	11.60	HCP-110	9,361.4	9,364.4	3.06	PUP
			4 1/2	11.60	HCP-110	9,364.4	9,446.7	82.31	Casing Joints
			4 1/2	11.60	HCP-110	9,446.7	9,449.3	2.60	Frac Sleeve
			4 1/2	11.60	HCP-110	9,449.3	9,529.2	79.88	Casing Joints
			4 1/2	11.60	HCP-110	9,529.2	9,535.3	6.07	PUP
			4 1/2	11.60	HCP-110	9,535.3	9,539.2	3.95	PACKER
			4 1/2	11.60	HCP-110	9,539.2	9,542.3	3.08	PUP
			4 1/2	11.60	HCP-110	9,542.3	9,623.6	81.29	Casing Joints
			4 1/2	11.60	HCP-110	9,623.6	9,626.2	2.59	Frac Sleeve
			4 1/2	11.60	HCP-110	9,626.2	9,705.9	79.67	Casing Joints
			4 1/2	11.60	HCP-110	9,705.9	9,712.0	6.09	PUP
			4 1/2	11.60	HCP-110	9,712.0	9,715.9	3.94	PACKER
			4 1/2	11.60	HCP-110	9,715.9	9,719.0	3.08	PUP



Lease Review

Well Name: RAZOR FEDERAL 26I-3513A

API Number 051233848600	WPC ID 1CO0761040	Well Permit Number	Field Name DJ Horizontal Niobrara	County Weld	State CO
Well Configuration Type Lateral/Horizontal	Orig KB Elv (ft) 4,738.00	Ground Elevation (ft) 4,717.00	Casing Flange Elevation (ft)	Tubing Head Elevation (ft)	Total Depth (ftKB) 12,585.0
Original Spud Date 7/9/2014	Completion Date 9/17/2014	Asset Group Redtail	Responsible Engineer Charles Ohlson	N/S Dist (ft) 2,242.0	N/S Ref FSL
				E/W Dist (ft) 728.0	E/W Ref FEL
Lot	Quarter 1 NE	Quarter 2 SE	Quarter 3	Quarter 4	Section 26
					Section Suffix
					Section Type
					Township 10 N
					Township N/S Dir N
					Range 58
					Range E/W Dir W
					Meridian

Lateral/Horizontal - Original Hole, 12/29/2014 1:15:12 PM			OD (in)	Wt (lb/ft)	Grade	Top (ftKB)	Btm (ftKB)	Len (ft)	Item Des
MD (ftKB)	D (ft)	nc l (ft)	4 1/2	11.60	HCP-110	9,719.0	9,794.6	75.58	Casing Joints
			4 1/2	11.60	HCP-110	9,794.6	9,797.2	2.60	Frac Sleeve
22.0	22.0	0.0	4 1/2	11.60	HCP-110	9,797.2	9,868.6	71.42	Casing Joints
80.1	80.1	0.0	4 1/2	11.60	HCP-110	9,868.6	9,874.7	6.08	PUP
1,947.8	1,947.8	0.0	4 1/2	11.60	HCP-110	9,874.7	9,878.6	3.96	PACKER
3,977.7	3,977.7	0.0	4 1/2	11.60	HCP-110	9,878.6	9,881.7	3.10	PUP
4,914.0	4,914.0	0.0	4 1/2	11.60	HCP-110	9,881.7	9,962.8	81.13	Casing Joints
4,931.1	4,931.1	0.0	4 1/2	11.60	HCP-110	9,962.8	9,965.4	2.59	Frac Sleeve
5,623.7	5,623.7	0.0	4 1/2	11.60	HCP-110	9,965.4	10,048.6	83.12	Casing Joints
5,951.8	5,951.8	0.0	4 1/2	11.60	HCP-110	10,048.6	10,054.6	6.08	PUP
6,084.0	6,084.0	0.0	4 1/2	11.60	HCP-110	10,054.6	10,058.6	3.97	PACKER
6,265.4	6,265.4	0.0	4 1/2	11.60	HCP-110	10,058.6	10,061.4	2.82	PUP
6,361.2	6,361.2	0.0	4 1/2	11.60	HCP-110	10,061.4	10,142.6	81.15	Casing Joints
6,538.7	6,538.7	0.0	4 1/2	11.60	HCP-110	10,142.6	10,145.2	2.59	Frac Sleeve
6,714.9	6,714.9	0.0	4 1/2	11.60	HCP-110	10,145.2	10,224.5	79.30	Casing Joints
6,895.0	6,895.0	0.0	4 1/2	11.60	HCP-110	10,224.5	10,230.5	6.08	PUP
7,068.6	7,068.6	0.0	4 1/2	11.60	HCP-110	10,230.5	10,234.5	3.95	PACKER
7,246.7	7,246.7	0.0	4 1/2	11.60	HCP-110	10,234.5	10,237.6	3.07	PUP
7,427.5	7,427.5	0.0	4 1/2	11.60	HCP-110	10,237.6	10,321.0	83.46	Casing Joints
7,603.3	7,603.3	0.0	4 1/2	11.60	HCP-110	10,321.0	10,323.6	2.59	Frac Sleeve
7,781.5	7,781.5	0.0	4 1/2	11.60	HCP-110	10,323.6	10,404.1	80.48	Casing Joints
7,958.0	7,958.0	0.0	4 1/2	11.60	HCP-110	10,404.1	10,410.2	6.06	PUP
8,132.9	8,132.9	0.0	4 1/2	11.60	HCP-110	10,410.2	10,414.1	3.95	PACKER
8,308.7	8,308.7	0.0	4 1/2	11.60	HCP-110	10,414.1	10,417.2	3.07	PUP
8,484.9	8,484.9	0.0	4 1/2	11.60	HCP-110	10,417.2	10,498.9	81.69	Casing Joints
8,659.4	8,659.4	0.0	4 1/2	11.60	HCP-110	10,498.9	10,501.5	2.59	Frac Sleeve
8,834.3	8,834.3	0.0	4 1/2	11.60	HCP-110	10,501.5	10,582.1	80.61	Casing Joints
9,011.8	9,011.8	0.0	4 1/2	11.60	HCP-110	10,582.1	10,588.2	6.09	PUP
9,187.7	9,187.7	0.0	4 1/2	11.60	HCP-110	10,588.2	10,592.1	3.95	PACKER
9,361.2	9,361.2	0.0	4 1/2	11.60	HCP-110	10,592.1	10,595.2	3.09	PUP
9,535.4	9,535.4	0.0	4 1/2	11.60	HCP-110	10,595.2	10,675.2	80.04	Casing Joints
9,711.9	9,711.9	0.0	4 1/2	11.60	HCP-110	10,675.2	10,677.8	2.59	Frac Sleeve
9,874.7	9,874.7	0.0	4 1/2	11.60	HCP-110	10,677.8	10,757.9	80.08	Casing Joints
10,054.8	10,054.8	0.0	4 1/2	11.60	HCP-110	10,757.9	10,764.0	6.07	PUP
10,224.4	10,224.4	0.0	4 1/2	11.60	HCP-110	10,764.0	10,767.9	3.94	PACKER
10,404.2	10,404.2	0.0	4 1/2	11.60	HCP-110	10,767.9	10,771.0	3.08	PUP
10,501.6	10,501.6	0.0	4 1/2	11.60	HCP-110	10,771.0	10,809.6	38.60	Casing Joints
10,677.8	10,677.8	0.0	4 1/2	11.60	HCP-110	10,809.6	10,812.2	2.60	Frac Sleeve
10,812.3	10,812.3	0.0	4 1/2	11.60	HCP-110	10,812.2	10,888.1	75.87	Casing Joints
10,942.6	10,942.6	0.0							
11,079.4	11,079.4	0.0							
11,213.9	11,213.9	0.0							
11,353.7	11,353.7	0.0							
11,484.3	11,484.3	0.0							
11,619.4	11,619.4	0.0							
11,767.7	11,767.7	0.0							
11,911.1	11,911.1	0.0							
12,059.1	12,059.1	0.0							
12,203.7	12,203.7	0.0							
12,349.7	12,349.7	0.0							
12,498.7	12,498.7	0.0							
12,562.0	12,562.0	0.0							



Lease Review

Well Name: RAZOR FEDERAL 26I-3513A

API Number 051233848600	WPC ID 1CO0761040	Well Permit Number	Field Name DJ Horizontal Niobrara	County Weld	State CO
Well Configuration Type Lateral/Horizontal	Orig KB Elv (ft) 4,738.00	Ground Elevation (ft) 4,717.00	Casing Flange Elevation (ft)	Tubing Head Elevation (ft)	Total Depth (ftKB) 12,585.0
Original Spud Date 7/9/2014	Completion Date 9/17/2014	Asset Group Redtail	Responsible Engineer Charles Ohlson	N/S Dist (ft) 2,242.0	N/S Ref FSL
				E/W Dist (ft) 728.0	E/W Ref FEL
Lot	Quarter 1 NE	Quarter 2 SE	Quarter 3	Quarter 4	Section 26
					Section Suffix
					Section Type
					Township 10 N
					Township N/S Dir N
					Range 58
					Range E/W Dir W
					Meridian

Lateral/Horizontal - Original Hole, 12/29/2014 1:15:15 PM			OD (in)	Wt (lb/ft)	Grade	Top (ftKB)	Btm (ftKB)	Len (ft)	Item Des
MD (ftKB)	D (ft KB)	n c l ()	4 1/2	11.60	HCP-110	10,888.1	10,894.1	6.07	PUP
			4 1/2	11.60	HCP-110	10,894.1	10,898.1	3.95	PACKER
			4 1/2	11.60	HCP-110	10,898.1	10,901.2	3.08	PUP
			4 1/2	11.60	HCP-110	10,901.2	10,940.0	38.83	Casing Joints
			4 1/2	11.60	HCP-110	10,940.0	10,942.6	2.60	Frac Sleeve
			4 1/2	11.60	HCP-110	10,942.6	11,022.1	79.55	Casing Joints
			4 1/2	11.60	HCP-110	11,022.1	11,028.2	6.09	PUP
			4 1/2	11.60	HCP-110	11,028.2	11,032.2	3.96	PACKER
			4 1/2	11.60	HCP-110	11,032.2	11,035.3	3.06	PUP
			4 1/2	11.60	HCP-110	11,035.3	11,076.9	41.61	Casing Joints
			4 1/2	11.60	HCP-110	11,076.9	11,079.5	2.59	Frac Sleeve
			4 1/2	11.60	HCP-110	11,079.5	11,157.1	77.62	Casing Joints
			4 1/2	11.60	HCP-110	11,157.1	11,163.2	6.08	PUP
			4 1/2	11.60	HCP-110	11,163.2	11,167.1	3.97	PACKER
			4 1/2	11.60	HCP-110	11,167.1	11,170.2	3.08	PUP
			4 1/2	11.60	HCP-110	11,170.2	11,211.4	41.21	Casing Joints
			4 1/2	11.60	HCP-110	11,211.4	11,214.0	2.59	Frac Sleeve
			4 1/2	11.60	HCP-110	11,214.0	11,296.7	82.69	Casing Joints
			4 1/2	11.60	HCP-110	11,296.7	11,302.8	6.07	PUP
			4 1/2	11.60	HCP-110	11,302.8	11,306.7	3.95	PACKER
			4 1/2	11.60	HCP-110	11,306.7	11,309.8	3.06	PUP
			4 1/2	11.60	HCP-110	11,309.8	11,351.0	41.23	Casing Joints
			4 1/2	11.60	HCP-110	11,351.0	11,353.6	2.60	Frac Sleeve
			4 1/2	11.60	HCP-110	11,353.6	11,427.2	73.62	Casing Joints
			4 1/2	11.60	HCP-110	11,427.2	11,433.3	6.06	PUP
			4 1/2	11.60	HCP-110	11,433.3	11,437.2	3.95	PACKER
			4 1/2	11.60	HCP-110	11,437.2	11,440.3	3.07	PUP
			4 1/2	11.60	HCP-110	11,440.3	11,481.5	41.19	Casing Joints
			4 1/2	11.60	HCP-110	11,481.5	11,484.1	2.60	Frac Sleeve
			4 1/2	11.60	HCP-110	11,484.1	11,561.5	77.41	Casing Joints
			4 1/2	11.60	HCP-110	11,561.5	11,567.6	6.08	PUP
			4 1/2	11.60	HCP-110	11,567.6	11,571.5	3.94	PACKER
			4 1/2	11.60	HCP-110	11,571.5	11,574.6	3.08	PUP
			4 1/2	11.60	HCP-110	11,574.6	11,616.7	42.10	Casing Joints
			4 1/2	11.60	HCP-110	11,616.7	11,619.3	2.60	Frac Sleeve
			4 1/2	11.60	HCP-110	11,619.3	11,707.9	88.57	Casing Joints
			4 1/2	11.60	HCP-110	11,707.9	11,713.9	6.07	PUP
			4 1/2	11.60	HCP-110	11,713.9	11,717.9	3.96	PACKER
			4 1/2	11.60	HCP-110	11,717.9	11,721.0	3.08	PUP



Lease Review

Well Name: RAZOR FEDERAL 26I-3513A

API Number 051233848600	WPC ID 1CO0761040	Well Permit Number	Field Name DJ Horizontal Niobrara	County Weld	State CO
Well Configuration Type Lateral/Horizontal	Orig KB Elv (ft) 4,738.00	Ground Elevation (ft) 4,717.00	Casing Flange Elevation (ft)	Tubing Head Elevation (ft)	Total Depth (ftKB) 12,585.0
Original Spud Date 7/9/2014	Completion Date 9/17/2014	Asset Group Redtail	Responsible Engineer Charles Ohlson	N/S Dist (ft) 2,242.0	N/S Ref FSL
				E/W Dist (ft) 728.0	E/W Ref FEL
Lot	Quarter 1 NE	Quarter 2 SE	Quarter 3	Quarter 4	Section 26
					Section Suffix
					Section Type
					Township 10 N
					Township N/S Dir N
					Range 58
					Range E/W Dir W
					Meridian

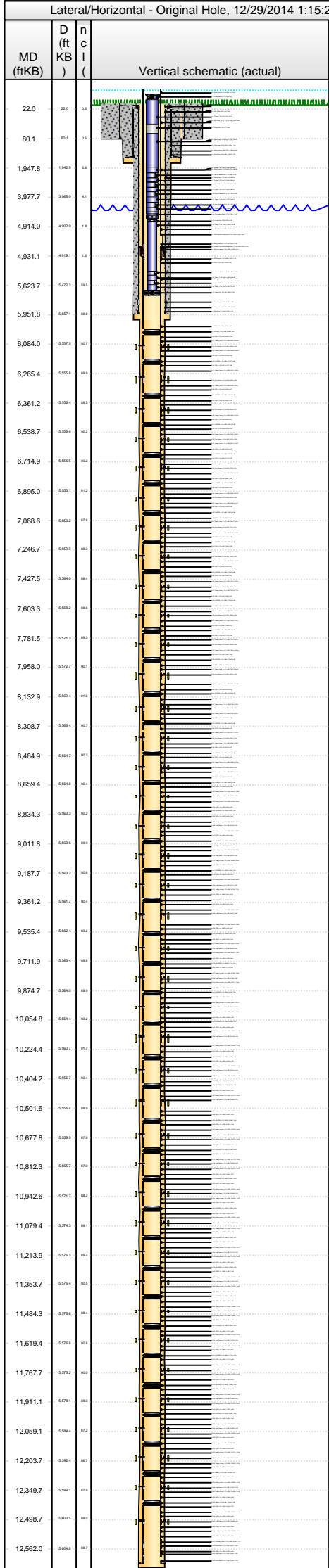
Lateral/Horizontal - Original Hole, 12/29/2014 1:15:18 PM			OD (in)	Wt (lb/ft)	Grade	Top (ftKB)	Btm (ftKB)	Len (ft)	Item Des
MD (ftKB)	D (ft)	nc l (ft)	4 1/2	11.60	HCP-110	11,721.0	11,765.2	44.24	Casing Joints
			4 1/2	11.60	HCP-110	11,765.2	11,767.8	2.56	Frac Sleeve
22.0	22.0	0.0	4 1/2	11.60	HCP-110	11,767.8	11,850.8	83.05	Casing Joints
80.1	80.1	0.0	4 1/2	11.60	HCP-110	11,850.8	11,856.9	6.09	PUP
1,947.8	1,947.8	0.0	4 1/2	11.60	HCP-110	11,856.9	11,860.9	3.94	PACKER
3,977.7	3,977.7	0.0	4 1/2	11.60	HCP-110	11,860.9	11,863.9	3.08	PUP
4,914.0	4,914.0	0.0	4 1/2	11.60	HCP-110	11,863.9	11,908.4	44.48	Casing Joints
4,931.1	4,931.1	0.0	4 1/2	11.60	HCP-110	11,908.4	11,911.0	2.60	Frac Sleeve
5,623.7	5,623.7	0.0	4 1/2	11.60	HCP-110	11,911.0	11,999.1	88.07	Casing Joints
5,951.8	5,951.8	0.0	4 1/2	11.60	HCP-110	11,999.1	12,005.2	6.08	PUP
6,084.0	6,084.0	0.0	4 1/2	11.60	HCP-110	12,005.2	12,009.1	3.96	PACKER
6,265.4	6,265.4	0.0	4 1/2	11.60	HCP-110	12,009.1	12,012.2	3.08	PUP
6,361.2	6,361.2	0.0	4 1/2	11.60	HCP-110	12,012.2	12,056.4	44.22	Casing Joints
6,538.7	6,538.7	0.0	4 1/2	11.60	HCP-110	12,056.4	12,059.0	2.59	Frac Sleeve
6,714.9	6,714.9	0.0	4 1/2	11.60	HCP-110	12,059.0	12,144.0	84.94	Casing Joints
6,895.0	6,895.0	0.0	4 1/2	11.60	HCP-110	12,144.0	12,150.0	6.07	PUP
7,068.6	7,068.6	0.0	4 1/2	11.60	HCP-110	12,150.0	12,154.0	3.96	Packer
7,246.7	7,246.7	0.0	4 1/2	11.60	HCP-110	12,154.0	12,157.1	3.07	PUP
7,427.5	7,427.5	0.0	4 1/2	11.60	HCP-110	12,157.1	12,201.2	44.09	Casing Joints
7,603.3	7,603.3	0.0	4 1/2	11.60	HCP-110	12,201.2	12,203.7	2.57	Frac Sleeve
7,781.5	7,781.5	0.0	4 1/2	11.60	HCP-110	12,203.7	12,289.4	85.63	Casing Joints
7,958.0	7,958.0	0.0	4 1/2	11.60	HCP-110	12,289.4	12,295.5	6.12	PUP
8,132.9	8,132.9	0.0	4 1/2	11.60	HCP-110	12,295.5	12,299.4	3.97	Packer
8,308.7	8,308.7	0.0	4 1/2	11.60	HCP-110	12,299.4	12,302.5	3.07	PUP
8,484.9	8,484.9	0.0	4 1/2	11.60	HCP-110	12,302.5	12,347.2	44.70	Casing Joints
8,659.4	8,659.4	0.0	4 1/2	11.60	HCP-110	12,347.2	12,349.8	2.58	Frac Sleeve
8,834.3	8,834.3	0.0	4 1/2	11.60	HCP-110	12,349.8	12,438.4	88.59	Casing Joints
9,011.8	9,011.8	0.0	4 1/2	11.60	HCP-110	12,438.4	12,444.5	6.08	PUP
9,187.7	9,187.7	0.0	4 1/2	11.60	HCP-110	12,444.5	12,448.4	3.96	Packer
9,361.2	9,361.2	0.0	4 1/2	11.60	HCP-110	12,448.4	12,451.5	3.07	PUP
9,535.4	9,535.4	0.0	4 1/2	11.60	HCP-110	12,451.5	12,492.6	41.10	Casing Joints
9,711.9	9,711.9	0.0	4 1/2	11.60	HCP-110	12,492.6	12,498.7	6.06	PUP
9,874.7	9,874.7	0.0	4 1/2	11.60	HCP-110	12,498.7	12,502.9	4.25	Frac Sleeve
10,054.8	10,054.8	0.0	4 1/2	11.60	HCP-110	12,502.9	12,506.0	3.08	PUP
10,224.4	10,224.4	0.0	4 1/2	11.60	HCP-110	12,506.0	12,550.1	44.13	Casing Joints
10,404.2	10,404.2	0.0	4 1/2	11.60	HCP-110	12,550.1	12,558.4	8.26	PUP
10,501.6	10,501.6	0.0	4 1/2	11.60	HCP-110	12,558.4	12,561.1	2.72	Circulating Shoe
10,677.8	10,677.8	0.0	4 1/2	11.60	HCP-110	12,561.1	12,562.0	0.95	Float Collar
10,812.3	10,812.3	0.0	4 1/2	11.60	HCP-110	12,562.0	12,568.1	6.09	PUP
10,942.6	10,942.6	0.0	4 1/2	11.60	HCP-110				
11,079.4	11,079.4	0.0	4 1/2	11.60	HCP-110				
11,213.9	11,213.9	0.0	4 1/2	11.60	HCP-110				
11,353.7	11,353.7	0.0	4 1/2	11.60	HCP-110				
11,484.3	11,484.3	0.0	4 1/2	11.60	HCP-110				
11,619.4	11,619.4	0.0	4 1/2	11.60	HCP-110				
11,767.7	11,767.7	0.0	4 1/2	11.60	HCP-110				
11,911.1	11,911.1	0.0	4 1/2	11.60	HCP-110				
12,059.1	12,059.1	0.0	4 1/2	11.60	HCP-110				
12,203.7	12,203.7	0.0	4 1/2	11.60	HCP-110				
12,349.7	12,349.7	0.0	4 1/2	11.60	HCP-110				
12,498.7	12,498.7	0.0	4 1/2	11.60	HCP-110				
12,562.0	12,562.0	0.0	4 1/2	11.60	HCP-110				



Lease Review

Well Name: RAZOR FEDERAL 26I-3513A

API Number 051233848600	WPC ID 1CO0761040	Well Permit Number	Field Name DJ Horizontal Niobrara	County Weld	State CO
Well Configuration Type Lateral/Horizontal	Orig KB Elv (ft) 4,738.00	Ground Elevation (ft) 4,717.00	Casing Flange Elevation (ft)	Tubing Head Elevation (ft)	Total Depth (ftKB) 12,585.0
Original Spud Date 7/9/2014	Completion Date 9/17/2014	Asset Group Redtail	Responsible Engineer Charles Ohlson	N/S Dist (ft) 2,242.0	N/S Ref FSL
				E/W Dist (ft) 728.0	E/W Ref FEL
Lot	Quarter 1 NE	Quarter 2 SE	Quarter 3	Quarter 4	Section 26
			Section Suffix	Section Type	Township 10 N
					Township N/S Dir N
					Range 58 W
					Range E/W Dir W
					Meridian



MD (ftKB)	D (ftKB)	n c l	Vertical schematic (actual)	Logs	OD (in)	Wt (lb/ft)	Grade	Top (ftKB)	Btm (ftKB)	Len (ft)	Item Des
					4 1/2	11.60	HCP-110	12,568.1	12,569.1	0.95	Float Collar
					4 1/2	11.60	HCP-110	12,569.1	12,570.0	0.92	Guide Shoe
Cement Stages											
		Des		Pump Start Date	Drill Out Date	Top (ftKB)	Btm (ftKB)	Top Meas Meth			
		Conductor Cement		3/28/2014		21.0	80.0	Returns to Surface			
		Surface Casing Cement		7/10/2014		21.0	1,530.9	Returns to Surface			
		Intermediate Casing Cement		7/13/2014		21.0	5,951.9	Returns to Surface			
Perforations											
		Type of Hole		Date	Top (ftKB)	Btm (ftKB)	Zone				
Sand Frac on 9/15/2014 06:00											
		Comment		Treatment End Date:9/17/2014; Number of staged intervals: 40; Min frac gradient: 0.844 psi/ft; Number of sleeves: 40; 72690 bbl QuadraFrac XL Gel, 11527 bbl QuadraFrac Linear Gel, 31789 bbl Slickwater			Min Top De...	Max Btm D...	Frac Length (ft)		
							6,084.0	12,502.9			
Stim/Treat Fluids											
QuadraFrac XL Gel; Linear Gel, <fluidtyp>											
		Proppant Frm (lb)		Total Clean Vol...	Avg Treat Rate...	Max Treat Rate...	Avg Treat Press...	P Max (psi)	Frac Gradient (p...)		
		5,749,810.2		116004.90	49.20	55.10	4,772.0	7,639.0	0.84		
Stim/Treat Stages											
		Stg #		Start Date	Top Depth (ftKB)	Bottom Depth (ftKB)	Vol Clean Pump (bbl)	Vol Slurry (bbl)			
		1		9/15/2014	12,498.7	12,502.9	2163.00	2184.20			
		Additive		Type	Amount	Units	Sand Size				
		Proppant		20/40 WS	16,215.0	lb	20/40				
		Additive		Type	Amount	Units	Sand Size				
		Proppant		40/70 WS	3,473.9	lb	40/70				
		Stg #		Start Date	Top Depth (ftKB)	Bottom Depth (ftKB)	Vol Clean Pump (bbl)	Vol Slurry (bbl)			
		2		9/15/2014	12,347.2	12,349.8	2480.00	2501.20			
		Additive		Type	Amount	Units	Sand Size				
		Proppant		20/40 WS	17,115.6	lb	20/40				
		Additive		Type	Amount	Units	Sand Size				
		Proppant		40/70 WS	2,530.5	lb	40/70				
		Stg #		Start Date	Top Depth (ftKB)	Bottom Depth (ftKB)	Vol Clean Pump (bbl)	Vol Slurry (bbl)			
		3		9/15/2014	12,201.2	12,203.7	2794.20	2901.50			
		Additive		Type	Amount	Units	Sand Size				
		Proppant		20/40 WS	96,528.4	lb	20/40				
		Additive		Type	Amount	Units	Sand Size				
		Proppant		40/70 WS	3,153.7	lb	40/70				
		Stg #		Start Date	Top Depth (ftKB)	Bottom Depth (ftKB)	Vol Clean Pump (bbl)	Vol Slurry (bbl)			
		4		9/15/2014	12,056.4	12,059.0	3027.50	3199.80			
		Additive		Type	Amount	Units	Sand Size				
		Proppant		20/40 WS	157,254.8	lb	20/40				
		Additive		Type	Amount	Units	Sand Size				
		Proppant		40/70 WS	2,826.8	lb	40/70				
		Stg #		Start Date	Top Depth (ftKB)	Bottom Depth (ftKB)	Vol Clean Pump (bbl)	Vol Slurry (bbl)			
		5		9/15/2014	11,908.4	11,911.0	2995.70	3166.40			
		Additive		Type	Amount	Units	Sand Size				
		Proppant		20/40 WS	155,314.8	lb	20/40				
		Additive		Type	Amount	Units	Sand Size				
		Proppant		40/70 WS	3,199.0	lb	40/70				
		Stg #		Start Date	Top Depth (ftKB)	Bottom Depth (ftKB)	Vol Clean Pump (bbl)	Vol Slurry (bbl)			
		6		9/15/2014	11,765.2	11,767.8	2965.50	3136.90			
		Additive		Type	Amount	Units	Sand Size				
		Proppant		20/40 WS	156,282.3	lb	20/40				
		Additive		Type	Amount	Units	Sand Size				
		Proppant		40/70 WS	2,954.6	lb	40/70				
		Stg #		Start Date	Top Depth (ftKB)	Bottom Depth (ftKB)	Vol Clean Pump (bbl)	Vol Slurry (bbl)			
		7		9/15/2014	11,616.7	11,619.3	2978.30	3149.40			
		Additive		Type	Amount	Units	Sand Size				
		Proppant		20/40 WS	155,705.2	lb	20/40				
		Additive		Type	Amount	Units	Sand Size				
		Proppant		40/70 WS	3,239.7	lb	40/70				
		Stg #		Start Date	Top Depth (ftKB)	Bottom Depth (ftKB)	Vol Clean Pump (bbl)	Vol Slurry (bbl)			
		8		9/15/2014	11,481.5	11,484.1	3137.80	3307.20			
		Additive		Type	Amount	Units	Sand Size				
		Proppant		20/40 WS	154,214.4	lb	20/40				
		Additive		Type	Amount	Units	Sand Size				
		Proppant		40/70 WS	3,094.9	lb	40/70				
		Stg #		Start Date	Top Depth (ftKB)	Bottom Depth (ftKB)	Vol Clean Pump (bbl)	Vol Slurry (bbl)			
		9		9/15/2014	11,351.0	11,353.6	2817.30	2957.50			
		Additive		Type	Amount	Units	Sand Size				
		Proppant		20/40 WS	126,883.4	lb	20/40				
		Additive		Type	Amount	Units	Sand Size				
		Proppant		40/70 WS	3,316.6	lb	40/70				
		Stg #		Start Date	Top Depth (ftKB)	Bottom Depth (ftKB)	Vol Clean Pump (bbl)	Vol Slurry (bbl)			
		10		9/15/2014	11,211.4	11,214.0	2171.90	2219.10			
		Additive		Type	Amount	Units	Sand Size				
		Proppant		20/40 WS	40,804.8	lb	20/40				
		Additive		Type	Amount	Units	Sand Size				
		Proppant		40/70 WS	3,081.3	lb	40/70				
		Stg #		Start Date	Top Depth (ftKB)	Bottom Depth (ftKB)	Vol Clean Pump (bbl)	Vol Slurry (bbl)			
		11		9/15/2014	11,076.9	11,079.5	2887.30	3035.30			
		Additive		Type	Amount	Units	Sand Size				
		Proppant		20/40 WS	134,196.4	lb	20/40				
		Additive		Type	Amount	Units	Sand Size				
		Proppant		40/70 WS	3,273.6	lb	40/70				



Lease Review

Well Name: RAZOR FEDERAL 26I-3513A

API Number 051233848600	WPC ID 1CO0761040	Well Permit Number	Field Name DJ Horizontal Niobrara	County Weld	State CO
Well Configuration Type Lateral/Horizontal	Orig KB Elv (ft) 4,738.00	Ground Elevation (ft) 4,717.00	Casing Flange Elevation (ft)	Tubing Head Elevation (ft)	Total Depth (ftKB) 12,585.0
Original Spud Date 7/9/2014	Completion Date 9/17/2014	Asset Group Redtail	Responsible Engineer Charles Ohlson	N/S Dist (ft) 2,242.0	N/S Ref FSL
				E/W Dist (ft) 728.0	E/W Ref FEL
Lot	Quarter 1 NE	Quarter 2 SE	Quarter 3	Quarter 4	Section 26
			Section Suffix	Section Type	Township 10 N
					Township N/S Dir N
					Range 58 W
					Range E/W Dir W
					Meridian

Lateral/Horizontal - Original Hole, 12/29/2014 1:15:24 PM			Stim/Treat Stages					
MD (ftKB)	D (ft KB)	nc l ()	Stg #	Start Date	Top Depth (ftKB)	Bottom Depth (ftKB)	Vol Clean Pump (bbl)	Vol Slurry (bbl)
			12	9/15/2014	10,940.0	10,942.6	3190.60	3364.80
			Additive Proppant		Type 20/40 WS	Amount 158,621.9	Units lb	Sand Size 20/40
			Additive Proppant		Type 40/70 WS	Amount 3,177.5	Units lb	Sand Size 40/70
22.0	22.0	0.0	13	9/15/2014	10,809.6	10,812.2	2984.40	3153.80
80.1	80.1	0.0	Additive Proppant		Type 20/40 WS	Amount 154,146.6	Units lb	Sand Size 20/40
1,947.8	1,947.8	0.0	Additive Proppant		Type 40/70 WS	Amount 3,240.8	Units lb	Sand Size 40/70
3,977.7	3,977.7	0.0	14	9/15/2014	10,675.2	10,677.8	2901.50	3070.90
4,914.0	4,914.0	0.0	Additive Proppant		Type 20/40 WS	Amount 154,606.9	Units lb	Sand Size 20/40
4,931.1	4,931.1	0.0	Additive Proppant		Type 40/70 WS	Amount 2,770.3	Units lb	Sand Size 40/70
5,623.7	5,623.7	0.0	15	9/15/2014	10,498.9	10,501.5	3037.90	3205.20
5,951.8	5,951.8	0.0	Additive Proppant		Type 20/40 WS	Amount 152,181.1	Units lb	Sand Size 20/40
6,084.0	6,084.0	0.0	Additive Proppant		Type 40/70 WS	Amount 3,220.5	Units lb	Sand Size 40/70
6,265.4	6,265.4	0.0	16	9/15/2014	10,321.0	10,323.6	2976.10	3143.20
6,361.2	6,361.2	0.0	Additive Proppant		Type 20/40 WS	Amount 151,986.4	Units lb	Sand Size 20/40
6,538.7	6,538.7	0.0	Additive Proppant		Type 40/70 WS	Amount 3,249.9	Units lb	Sand Size 40/70
6,714.9	6,714.9	0.0	17	9/15/2014	10,142.6	10,145.2	2896.90	3061.00
6,895.0	6,895.0	0.0	Additive Proppant		Type 20/40 WS	Amount 149,189.4	Units lb	Sand Size 20/40
7,068.6	7,068.6	0.0	Additive Proppant		Type 40/70 WS	Amount 3,258.9	Units lb	Sand Size 40/70
7,246.7	7,246.7	0.0	18	9/15/2014	9,962.8	9,965.4	2902.10	3065.60
7,427.5	7,427.5	0.0	Additive Proppant		Type 20/40 WS	Amount 148,578.9	Units lb	Sand Size 20/40
7,603.3	7,603.3	0.0	Additive Proppant		Type 40/70 WS	Amount 3,308.7	Units lb	Sand Size 40/70
7,781.5	7,781.5	0.0	19	9/15/2014	9,794.6	9,797.2	2899.50	3062.50
7,958.0	7,958.0	0.0	Additive Proppant		Type 20/40 WS	Amount 148,100.2	Units lb	Sand Size 20/40
8,132.9	8,132.9	0.0	Additive Proppant		Type 40/70 WS	Amount 3,297.4	Units lb	Sand Size 40/70
8,308.7	8,308.7	0.0	20	9/16/2014	9,623.6	9,626.2	2934.40	3093.00
8,484.9	8,484.9	0.0	Additive Proppant		Type 20/40 WS	Amount 144,244.5	Units lb	Sand Size 20/40
8,659.4	8,659.4	0.0	Additive Proppant		Type 40/70 WS	Amount 3,082.5	Units lb	Sand Size 40/70
8,834.3	8,834.3	0.0	21	9/16/2014	9,446.7	9,449.3	2875.20	3039.50
9,011.8	9,011.8	0.0	Additive Proppant		Type 20/40 WS	Amount 148,689.5	Units lb	Sand Size 20/40
9,187.7	9,187.7	0.0	Additive Proppant		Type 40/70 WS	Amount 3,884.5	Units lb	Sand Size 40/70
9,361.2	9,361.2	0.0	22	9/16/2014	9,271.4	9,274.0	2931.00	3097.70
9,535.4	9,535.4	0.0	Additive Proppant		Type 20/40 WS	Amount 151,415.5	Units lb	Sand Size 20/40
9,711.9	9,711.9	0.0	Additive Proppant		Type 40/70 WS	Amount 3,386.8	Units lb	Sand Size 40/70
9,874.7	9,874.7	0.0	23	9/16/2014	9,092.3	9,094.9	2922.80	3090.10
10,054.8	10,054.8	0.0	Additive Proppant		Type 20/40 WS	Amount 151,679.0	Units lb	Sand Size 20/40
10,224.4	10,224.4	0.0	Additive Proppant		Type 40/70 WS	Amount 3,676.3	Units lb	Sand Size 40/70
10,404.2	10,404.2	0.0	24	9/16/2014	8,918.6	8,921.2	2905.50	3072.70
10,501.6	10,501.6	0.0	Additive Proppant		Type 20/40 WS	Amount 152,042.1	Units lb	Sand Size 20/40
10,677.8	10,677.8	0.0	Additive Proppant		Type 40/70 WS	Amount 3,306.4	Units lb	Sand Size 40/70
10,812.3	10,812.3	0.0	25	9/16/2014	8,739.4	8,742.0	2931.90	3098.80
10,942.6	10,942.6	0.0	Additive Proppant		Type 20/40 WS	Amount 152,107.2	Units lb	Sand Size 20/40
11,079.4	11,079.4	0.0	Additive Proppant		Type 40/70 WS	Amount 2,883.4	Units lb	Sand Size 40/70
11,213.9	11,213.9	0.0	26	9/16/2014	8,565.0	8,567.6	2918.00	3086.90
11,353.7	11,353.7	0.0	Additive Proppant		Type 20/40 WS	Amount 153,423.5	Units lb	Sand Size 20/40
11,484.3	11,484.3	0.0	Additive Proppant		Type 40/70 WS	Amount 3,455.8	Units lb	Sand Size 40/70
11,619.4	11,619.4	0.0	27	9/16/2014	8,392.8	8,395.3	2916.50	3082.50
11,767.7	11,767.7	0.0	Additive Proppant		Type 20/40 WS	Amount 150,686.2	Units lb	Sand Size 20/40
11,911.1	11,911.1	0.0	Additive Proppant		Type 40/70 WS			
12,059.1	12,059.1	0.0	Additive Proppant		Type 20/40 WS			
12,203.7	12,203.7	0.0	Additive Proppant		Type 40/70 WS			
12,349.7	12,349.7	0.0	Additive Proppant		Type 20/40 WS			
12,498.7	12,498.7	0.0	Additive Proppant		Type 40/70 WS			
12,562.0	12,562.0	0.0	Additive Proppant		Type 20/40 WS			



Lease Review

Well Name: RAZOR FEDERAL 26I-3513A

API Number 051233848600		WPC ID 1CO0761040		Well Permit Number		Field Name DJ Horizontal Niobrara		County Weld		State CO	
Well Configuration Type Lateral/Horizontal		Orig KB Elv (ft) 4,738.00		Ground Elevation (ft) 4,717.00		Casing Flange Elevation (ft)		Tubing Head Elevation (ft)		Total Depth (ftKB) 12,585.0	
Original Spud Date 7/9/2014		Completion Date 9/17/2014		Asset Group Redtail		Responsible Engineer Charles Ohlson		N/S Dist (ft) 2,242.0		N/S Ref FSL	
E/W Dist (ft) 728.0		E/W Ref FEL		Lot		Quarter 1 NE		Quarter 2 SE		Quarter 3 Quarter 4	
Section 26		Section Suffix		Section Type		Township 10 N		Township N/S Dir 58 W		Meridian	

Lateral/Horizontal - Original Hole, 12/29/2014 1:15:27 PM													
MD (ftKB)	D (ftKB)	nc l ()	Vertical schematic (actual)	Logs	Additive		Type		Amount		Sand Size		
					Proppant	Stg #	20/40 WS	40/70 WS	lb	Units	20/40	40/70	
					Stg #	Start Date	Top Depth (ftKB)	Bottom Depth (ftKB)	Vol Clean Pump (bbl)	Vol Slurry (bbl)			
					28	9/16/2014	8,215.6	8,218.2	3,490.8	2970.80	3141.60		
					29	9/16/2014	8,037.9	8,040.5	155,967.9	2922.60	3092.90		
					30	9/16/2014	7,859.5	7,862.1	2,651.5	2919.20	3090.10		
					31	9/16/2014	7,685.9	7,688.5	154,741.7	2931.60	3078.90		
					32	9/16/2014	7,510.2	7,512.8	3,420.7	2859.00	3031.10		
					33	9/16/2014	7,329.4	7,332.1	155,514.6	3010.30	3178.10		
					34	9/16/2014	7,151.4	7,154.0	3,248.8	3015.00	3184.10		
					35	9/16/2014	6,978.2	6,980.8	133,790.8	2948.40	3118.10		
					36	9/16/2014	6,797.3	6,799.9	3,050.8	2993.80	3166.40		
					37	9/16/2014	6,619.2	6,621.8	156,179.8	2948.40	3118.10		
					38	9/16/2014	6,443.9	6,446.6	1,760.1	2948.40	3118.10		
					39	9/17/2014	6,265.6	6,268.2	152,188.2	2941.00	3110.70		
					40	9/17/2014	6,084.0	6,086.6	3,675.2	2982.80	3150.20		
Tubing - Production set at 5,662.4ftKB on 10/14/2014 06:00													
					Set Depth (ftKB)	Comment				Run Date		Pull Date	
					5,662.4					10/14/2014			
					Item Des	OD (in)	ID (in)	Len (ft)	Top (ftKB)	Btm (ftKB)			
					Tubing Hanger	2 7/8		0.50	19.6	20.1			
					Tubing	2 7/8	2.441	32.54	20.1	52.7			
					Tubing Sub	2 7/8		8.00	52.7	60.7			
					Tubing	2 7/8	2.441	1,887.32	60.7	1,948.0			
					Tubing	2 7/8	2.441	1,008.74	1,948.0	2,956.7			
					Gas Lift Mandrel #6	2 7/8		4.05	2,956.7	2,960.8			
					Tubing	2 7/8	2.441	520.64	2,960.8	3,481.4			
					Gas Lift Mandrel #5	2 7/8		4.05	3,481.4	3,485.5			
					Tubing	2 7/8	2.441	488.10	3,485.5	3,973.6			

