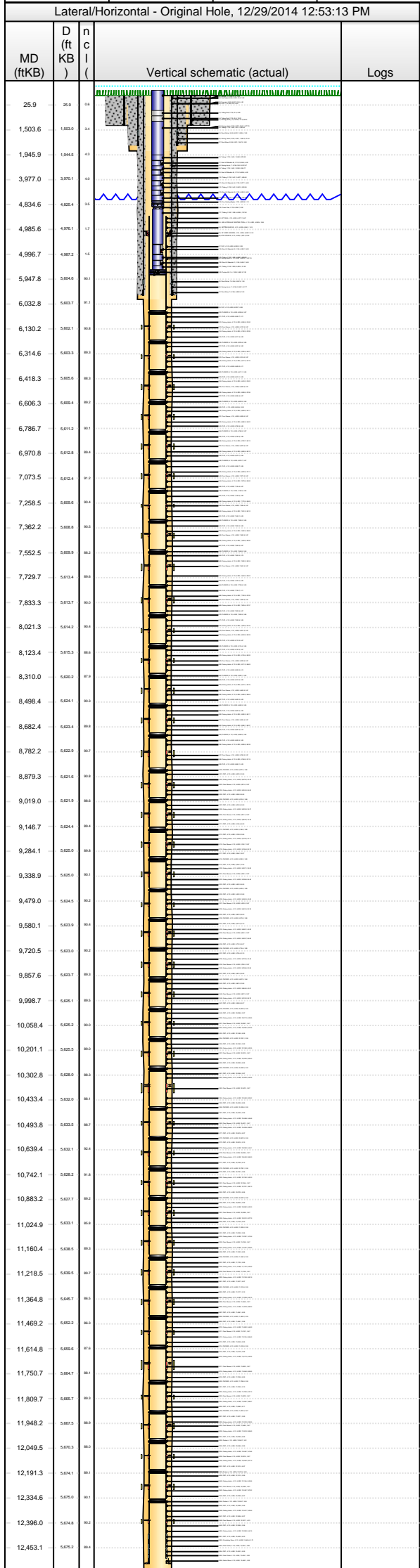




PT - Completion Report - CR

Well Name: RAZOR FEDERAL 26I-3514B

API Number 051233848700		WPC ID 1CO0761041		Well Permit Number		Field Name DJ Horizontal Niobrara		County Weld		State CO	N/S Dist (ft) 2,167.0	N/S Ref FSL	E/W Dist (ft) 696.0	E/W Ref FEL	
Well Configuration Type Lateral/Horizontal				Orig KB Elev (ft) 4,785.00		Gr Elev (ft) 4,764.00		Total Depth (ftKB) 12,475.0		Original Spud Date 6/27/2014		Completion Date 9/14/2014		First Production Date 10/14/2014	
Asset Group Retail			Responsible Engineer Charles Ohlson			Responsible Foreman Mike Staab			Responsible Drilling Cole Orley			Responsible Geology Mark Odegard		Responsible Land Scott McDaniel	
Lot	Quarter 1 NE		Quarter 2 SE		Quarter 3		Quarter 4		Section 26	Township 10 N		Township N/S Dir	Range 58 W		Meridian



Rigs							
Contractor Frontier		Rig # 26	Rig Type Drilling	Rig Start Date 6/26/2014	RR Date 7/8/2014	TD (ft) 12,475.00	TD Date
Wellbore Sections							
Section Des	Wellbore Name	Size (in)	Act Top (ftKB)	Act Btm (ftKB)	Start Date	End Date	
Conductor	Original Hole	24	21.0	80.0	3/28/2014	3/28/2014	
Surface	Original Hole	13 1/2	80.0	1,560.0	6/27/2014	6/27/2014	
Intermediate	Original Hole	8 3/4	1,560.0	6,002.0	6/28/2014	6/29/2014	
Lateral	Original Hole	6 1/8	6,002.0	12,475.0	7/1/2014	7/3/2014	
Casing							
Conductor Pipe, 80.0ftKB							
Comment					Run Date 3/28/2014		Pull Date
OD (in)	Wt (lb/ft)	Grade	Top (ftKB)	Btm (ftKB)	Len (ft)	Item Des	
16	65.00	H-40	21.0	80.0	59.00	Casing (black)	
Surface Csg, 1,549.2ftKB							
Comment 12 centralizers 1 Cement Basket					Run Date 6/27/2014		Pull Date
OD (in)	Wt (lb/ft)	Grade	Top (ftKB)	Btm (ftKB)	Len (ft)	Item Des	
9 5/8	36.00	J-55	21.0	21.0	0.00	Landing joint	
9 5/8	36.00	J-55	21.0	22.0	1.00	Well Head	
9 5/8	36.00	J-55	22.0	26.0	4.00	Pup joint	
9 5/8	36.00	J-55	26.0	1,503.8	1,477.75	Casing Joints	
9 5/8	36.00	J-55	1,503.8	1,505.3	1.50	Float Collar	
9 5/8	36.00	J-55	1,505.3	1,547.2	41.94	Casing Joints	
9 5/8	36.00	J-55	1,547.2	1,549.2	2.00	Float Shoe	
Frac String, 4,998.7ftKB							
Comment					Run Date 8/5/2014		Pull Date 9/15/2014
OD (in)	Wt (lb/ft)	Grade	Top (ftKB)	Btm (ftKB)	Len (ft)	Item Des	
	11.60	HCP-110	-11.3	-9.3	1.95	Casing Hanger	
4 1/2	11.60	HCP-110	-9.3	31.0	40.32	Casing Joints	
4 1/2	11.60	HCP-110	31.0	45.0	14.00	Pup Joints 10', 4'	
4 1/2	11.60	HCP-110	45.0	4,989.2	4,944.25	Casing Joints	
4 1/2			4,989.2	4,998.7	9.50	Packers Plus latch seal assembly	
Intermediate Csg, 5,992.4ftKB							
Comment 15 Turbulizers 20 bowsprings					Run Date 6/30/2014		Pull Date
OD (in)	Wt (lb/ft)	Grade	Top (ftKB)	Btm (ftKB)	Len (ft)	Item Des	
7	29.00	L-80	21.0	21.0	0.00	Landing Joint	
7	29.00	L-80	21.0	22.0	1.00	Hanger	
7	29.00	L-80	22.0	26.0	4.00	PUP	
7	29.00	L-80	26.0	5,947.9	5,921.87	Casing Joints	
7	29.00	L-80	5,947.9	5,949.1	1.25	Float Collar	
7	29.00	L-80	5,949.1	5,990.9	41.77	Casing Joints	
7	29.00	L-80	5,990.9	5,992.4	1.50	Float Shoe	
Liner, 12,461.0ftKB							
Comment					Run Date 7/8/2014		Pull Date
OD (in)	Wt (lb/ft)	Grade	Top (ftKB)	Btm (ftKB)	Len (ft)	Item Des	
4 1/2	11.60	HCP-110	4,971.8	4,971.8	0.00	Casing Joints	
4 1/2	11.60	HCP-110	4,971.8	4,980.4	8.67	LIFT SUB	
4 1/2	11.60	HCP-110	4,980.4	4,984.1	3.64	ARH HYDRAULIC SEETING TOOL	
4 1/2	11.60	HCP-110	4,984.1	4,985.7	1.63	SETTING SLEEVE	
4 1/2	11.60	HCP-110	4,985.7	4,991.0	5.34	SF LINER HANGER	
4 1/2	11.60	HCP-110	4,991.0	4,992.0	0.94	BTM COUPLE	
4 1/2	11.60	HCP-110	4,992.0	4,995.0	2.99	PUP	
4 1/2	11.60	HCP-110	4,995.0	6,032.7	1,037.74	Casing Joints	
4 1/2	11.60	HCP-110	6,032.7	6,038.8	6.06	PUP	
4 1/2	11.60	HCP-110	6,038.8	6,042.7	3.97	PACKER	
4 1/2	11.60	HCP-110	6,042.7	6,045.8	3.11	PUP	
4 1/2	11.60	HCP-110	6,045.8	6,127.6	81.80	Casing Joints	
4 1/2	11.60	HCP-110	6,127.6	6,130.3	2.67	Frac Sleeve	
4 1/2	11.60	HCP-110	6,130.3	6,217.4	87.06	Casing Joints	
4 1/2	11.60	HCP-110	6,217.4	6,223.5	6.08	PUP	
4 1/2	11.60	HCP-110	6,223.5	6,227.4	3.95	PACKER	
4 1/2	11.60	HCP-110	6,227.4	6,230.4	3.00	PUP	
4 1/2	11.60	HCP-110	6,230.4	6,314.6	84.21	Casing Joints	
4 1/2	11.60	HCP-110	6,314.6	6,317.3	2.67	Frac Sleeve	
4 1/2	11.60	HCP-110	6,317.3	6,405.0	87.75	Casing Joints	
4 1/2	11.60	HCP-110	6,405.0	6,411.1	6.11	PUP	
4 1/2	11.60	HCP-110	6,411.1	6,415.1	3.95	PACKER	
4 1/2	11.60	HCP-110	6,415.1	6,418.2	3.09	PUP	
4 1/2	11.60	HCP-110	6,418.2	6,505.8	87.62	Casing Joints	
4 1/2	11.60	HCP-110	6,505.8	6,508.5	2.67	Frac Sleeve	



PT - Completion Report - CR
Well Name: RAZOR FEDERAL 26I-3514B

Lateral/Horizontal - Original Hole, 12/29/2014 12:53:16 PM				OD (in)	Wt (lb/ft)	Grade	Top (ftKB)	Btm (ftKB)	Len (ft)	Item Des	
MD (ftKB)	D (ft KB)	n c l ()	Vertical schematic (actual)	Logs	4 1/2	11.60	HCP-110	6,508.5	6,596.4	87.96	Casing Joints
					4 1/2	11.60	HCP-110	6,596.4	6,602.5	6.07	PUP
					4 1/2	11.60	HCP-110	6,602.5	6,606.4	3.94	PACKER
					4 1/2	11.60	HCP-110	6,606.4	6,609.5	3.08	PUP
25.9	25.9	54			4 1/2	11.60	HCP-110	6,609.5	6,693.6	84.11	Casing Joints
1,503.6	1,503.0	144			4 1/2	11.60	HCP-110	6,693.6	6,696.3	2.67	Frac Sleeve
1,945.9	1,944.5	43			4 1/2	11.60	HCP-110	6,696.3	6,780.8	84.52	Casing Joints
3,977.0	3,970.1	43			4 1/2	11.60	HCP-110	6,780.8	6,786.9	6.08	PUP
4,834.6	4,825.4	33			4 1/2	11.60	HCP-110	6,786.9	6,790.9	3.97	PACKER
4,985.6	4,981.1	17			4 1/2	11.60	HCP-110	6,790.9	6,793.8	2.88	PUP
4,996.7	4,987.2	15			4 1/2	11.60	HCP-110	6,793.8	6,879.9	86.15	Casing Joints
5,947.8	5,904.6	36.1			4 1/2	11.60	HCP-110	6,879.9	6,882.6	2.67	Frac Sleeve
6,032.8	5,993.7	36.1			4 1/2	11.60	HCP-110	6,882.6	6,970.7	88.10	Casing Joints
6,130.2	5,992.1	36.1			4 1/2	11.60	HCP-110	6,970.7	6,976.8	6.08	PUP
6,314.6	5,992.3	36.1			4 1/2	11.60	HCP-110	6,976.8	6,980.7	3.97	PACKER
6,418.3	5,992.5	36.1			4 1/2	11.60	HCP-110	6,980.7	6,983.8	3.08	PUP
6,606.3	5,992.4	36.1			4 1/2	11.60	HCP-110	6,983.8	7,071.0	87.17	Casing Joints
6,786.7	5,991.2	36.1			4 1/2	11.60	HCP-110	7,071.0	7,073.6	2.67	Frac Sleeve
6,970.8	5,991.8	36.1			4 1/2	11.60	HCP-110	7,073.6	7,159.4	85.80	Casing Joints
7,073.5	5,991.4	36.1			4 1/2	11.60	HCP-110	7,159.4	7,165.5	6.07	PUP
7,258.5	5,990.5	36.1			4 1/2	11.60	HCP-110	7,165.5	7,169.5	3.95	PACKER
7,362.2	5,989.8	36.1			4 1/2	11.60	HCP-110	7,169.5	7,172.5	3.08	PUP
7,552.5	5,989.9	36.1			4 1/2	11.60	HCP-110	7,172.5	7,258.4	85.83	Casing Joints
7,729.7	5,991.4	36.1			4 1/2	11.60	HCP-110	7,258.4	7,261.0	2.67	Frac Sleeve
7,833.3	5,991.7	36.1			4 1/2	11.60	HCP-110	7,261.0	7,349.1	88.10	Casing Joints
8,021.3	5,991.2	36.1			4 1/2	11.60	HCP-110	7,349.1	7,355.2	6.09	PUP
8,123.4	5,991.3	36.1			4 1/2	11.60	HCP-110	7,355.2	7,359.2	3.95	PACKER
8,310.0	5,991.2	36.1			4 1/2	11.60	HCP-110	7,359.2	7,362.3	3.08	PUP
8,498.4	5,991.1	36.1			4 1/2	11.60	HCP-110	7,362.3	7,362.3	0.00	
8,682.4	5,991.4	36.1			4 1/2	11.60	HCP-110	7,362.3	7,450.9	88.65	Casing Joints
8,782.2	5,991.9	36.1			4 1/2	11.60	HCP-110	7,450.9	7,453.6	2.67	Frac Sleeve
8,879.3	5,991.6	36.1			4 1/2	11.60	HCP-110	7,453.6	7,542.5	88.90	Casing Joints
9,019.0	5,991.9	36.1			4 1/2	11.60	HCP-110	7,542.5	7,548.6	6.07	PUP
9,146.7	5,991.4	36.1			4 1/2	11.60	HCP-110	7,548.6	7,552.5	3.94	PACKER
9,284.1	5,992.0	36.1			4 1/2	11.60	HCP-110	7,552.5	7,555.3	2.79	PUP
9,338.9	5,992.0	36.1			4 1/2	11.60	HCP-110	7,555.3	7,641.5	86.24	Casing Joints
9,479.0	5,991.5	36.1			4 1/2	11.60	HCP-110	7,641.5	7,644.2	2.67	Frac Sleeve
9,580.1	5,991.9	36.1			4 1/2	11.60	HCP-110	7,644.2	7,729.7	85.53	Casing Joints
9,720.5	5,992.0	36.1			4 1/2	11.60	HCP-110	7,729.7	7,735.8	6.06	PUP
9,857.6	5,992.7	36.1			4 1/2	11.60	HCP-110	7,735.8	7,739.7	3.93	PACKER
9,998.7	5,992.1	36.1			4 1/2	11.60	HCP-110	7,739.7	7,742.8	3.11	PUP
10,058.4	5,992.2	36.1			4 1/2	11.60	HCP-110	7,742.8	7,830.8	87.95	Casing Joints
10,201.1	5,992.5	36.1			4 1/2	11.60	HCP-110	7,830.8	7,833.4	2.67	Frac Sleeve
10,302.8	5,992.0	36.1			4 1/2	11.60	HCP-110	7,833.4	7,920.8	87.37	Casing Joints
10,433.4	5,992.0	36.1			4 1/2	11.60	HCP-110	7,920.8	7,926.9	6.07	PUP
10,493.8	5,992.5	36.1			4 1/2	11.60	HCP-110	7,926.9	7,930.8	3.96	PACKER
10,639.4	5,992.1	36.1			4 1/2	11.60	HCP-110	7,930.8	7,933.9	3.08	PUP
10,742.1	5,992.2	36.1			4 1/2	11.60	HCP-110	7,933.9	8,021.4	87.43	Casing Joints
10,883.2	5,992.7	36.1			4 1/2	11.60	HCP-110	8,021.4	8,024.0	2.67	Frac Sleeve
11,024.9	5,992.1	36.1			4 1/2	11.60	HCP-110	8,024.0	8,110.3	86.28	Casing Joints
11,160.4	5,992.5	36.1			4 1/2	11.60	HCP-110	8,110.3	8,116.4	6.07	PUP
11,218.5	5,992.5	36.1			4 1/2	11.60	HCP-110	8,116.4	8,120.3	3.96	PACKER
11,364.8	5,992.7	36.1			4 1/2	11.60	HCP-110	8,120.3	8,123.4	3.07	PUP
11,469.2	5,992.2	36.1			4 1/2	11.60	HCP-110	8,123.4	8,208.6	85.20	Casing Joints
11,614.8	5,992.6	36.1			4 1/2	11.60	HCP-110	8,208.6	8,211.3	2.67	Frac Sleeve
11,750.7	5,992.7	36.1			4 1/2	11.60	HCP-110	8,211.3	8,300.0	88.69	Casing Joints
11,809.7	5,992.7	36.1			4 1/2	11.60	HCP-110	8,300.0	8,306.1	6.12	PUP
11,948.2	5,992.5	36.1			4 1/2	11.60	HCP-110	8,306.1	8,310.0	3.95	PACKER
12,049.5	5,992.3	36.1			4 1/2	11.60	HCP-110	8,310.0	8,313.1	3.08	PUP
12,191.3	5,992.1	36.1			4 1/2	11.60	HCP-110	8,313.1	8,402.9	89.76	Casing Joints
12,334.6	5,992.0	36.1			4 1/2	11.60	HCP-110	8,402.9	8,405.5	2.67	Frac Sleeve
12,396.0	5,991.8	36.1			4 1/2	11.60	HCP-110	8,405.5	8,492.2	86.64	Casing Joints
12,453.1	5,991.2	36.1			4 1/2	11.60	HCP-110	8,492.2	8,498.3	6.09	PUP
					4 1/2	11.60	HCP-110	8,498.3	8,502.2	3.95	PACKER
					4 1/2	11.60	HCP-110	8,502.2	8,505.3	3.06	PUP
					4 1/2	11.60	HCP-110	8,505.3	8,593.4	88.11	Casing Joints
					4 1/2	11.60	HCP-110	8,593.4	8,596.1	2.67	Frac Sleeve
					4 1/2	11.60	HCP-110	8,596.1	8,682.4	86.37	Casing Joints
					4 1/2	11.60	HCP-110	8,682.4	8,688.5	6.10	PUP
					4 1/2	11.60	HCP-110	8,688.5	8,692.5	3.96	PACKER
					4 1/2	11.60	HCP-110	8,692.5	8,695.6	3.09	PUP
					4 1/2	11.60	HCP-110	8,695.6	8,782.0	86.38	Casing Joints



PT - Completion Report - CR
Well Name: RAZOR FEDERAL 26I-3514B

Lateral/Horizontal - Original Hole, 12/29/2014 12:53:19 PM				OD (in)	Wt (lb/ft)	Grade	Top (ftKB)	Btm (ftKB)	Len (ft)	Item Des
MD (ftKB)	D (ft KB)	n c l ()	Vertical schematic (actual)	Logs						
25.9	25.9	14								
1,503.6	1,503.0	14		4 1/2	11.60	HCP-110	8,782.0	8,784.9	2.97	Frac Sleeve
1,945.9	1,945.5	14		4 1/2	11.60	HCP-110	8,784.9	8,866.1	81.18	Casing Joints
3,977.0	3,970.1	14		4 1/2	11.60	HCP-110	8,866.1	8,872.2	6.09	PUP
4,834.6	4,825.4	14		4 1/2	11.60	HCP-110	8,872.2	8,876.2	3.96	PACKER
4,985.6	4,981.1	14		4 1/2	11.60	HCP-110	8,876.2	8,879.2	3.06	PUP
4,996.7	4,987.2	14		4 1/2	11.60	HCP-110	8,879.2	8,921.6	42.40	Casing Joints
5,947.8	5,904.6	14		4 1/2	11.60	HCP-110	8,921.6	8,924.3	2.67	Frac Sleeve
6,032.8	5,993.7	14		4 1/2	11.60	HCP-110	8,924.3	9,008.9	84.62	Casing Joints
6,130.2	5,992.1	14		4 1/2	11.60	HCP-110	9,008.9	9,015.0	6.06	PUP
6,314.6	5,991.1	14		4 1/2	11.60	HCP-110	9,015.0	9,019.0	3.98	PACKER
6,418.3	5,987.2	14		4 1/2	11.60	HCP-110	9,019.0	9,022.0	3.09	PUP
6,606.3	5,984.6	14		4 1/2	11.60	HCP-110	9,022.0	9,061.3	39.27	Casing Joints
6,786.7	5,981.2	14		4 1/2	11.60	HCP-110	9,061.3	9,064.0	2.67	Frac Sleeve
6,970.8	5,973.8	14		4 1/2	11.60	HCP-110	9,064.0	9,140.4	76.45	Casing Joints
7,073.5	5,972.4	14		4 1/2	11.60	HCP-110	9,140.4	9,146.5	6.09	PUP
7,258.5	5,968.6	14		4 1/2	11.60	HCP-110	9,146.5	9,150.5	3.95	PACKER
7,362.2	5,968.8	14		4 1/2	11.60	HCP-110	9,150.5	9,153.5	3.06	PUP
7,552.5	5,969.9	14		4 1/2	11.60	HCP-110	9,153.5	9,195.7	42.17	Casing Joints
7,729.7	5,973.4	14		4 1/2	11.60	HCP-110	9,195.7	9,198.4	2.67	Frac Sleeve
7,833.3	5,973.7	14		4 1/2	11.60	HCP-110	9,198.4	9,284.1	85.76	Casing Joints
8,021.3	5,974.2	14		4 1/2	11.60	HCP-110	9,284.1	9,290.2	6.07	PUP
8,123.4	5,975.3	14		4 1/2	11.60	HCP-110	9,290.2	9,294.2	3.95	PACKER
8,310.0	5,972.8	14		4 1/2	11.60	HCP-110	9,294.2	9,297.1	2.95	PUP
8,498.4	5,974.1	14		4 1/2	11.60	HCP-110	9,297.1	9,336.1	39.00	Casing Joints
8,682.4	5,974.4	14		4 1/2	11.60	HCP-110	9,336.1	9,338.8	2.67	Frac Sleeve
8,782.2	5,973.9	14		4 1/2	11.60	HCP-110	9,338.8	9,423.3	84.49	Casing Joints
8,879.3	5,971.6	14		4 1/2	11.60	HCP-110	9,423.3	9,429.3	6.05	PUP
9,019.0	5,971.9	14	4 1/2	11.60	HCP-110	9,429.3	9,433.3	3.95	PACKER	
9,146.7	5,974.4	14	4 1/2	11.60	HCP-110	9,433.3	9,436.3	3.08	PUP	
9,284.1	5,975.0	14	4 1/2	11.60	HCP-110	9,436.3	9,478.9	42.60	Casing Joints	
9,338.9	5,975.0	14	4 1/2	11.60	HCP-110	9,478.9	9,481.6	2.67	Frac Sleeve	
9,479.0	5,974.5	14	4 1/2	11.60	HCP-110	9,481.6	9,567.0	85.38	Casing Joints	
9,580.1	5,973.9	14	4 1/2	11.60	HCP-110	9,567.0	9,573.0	6.03	PUP	
9,720.5	5,973.0	14	4 1/2	11.60	HCP-110	9,573.0	9,577.0	3.96	PACKER	
9,857.6	5,972.7	14	4 1/2	11.60	HCP-110	9,577.0	9,580.1	3.10	PUP	
9,998.7	5,975.1	14	4 1/2	11.60	HCP-110	9,580.1	9,623.1	43.00	Casing Joints	
10,058.4	5,975.2	14	4 1/2	11.60	HCP-110	9,623.1	9,625.8	2.67	Frac Sleeve	
10,201.1	5,975.5	14	4 1/2	11.60	HCP-110	9,625.8	9,710.4	84.60	Casing Joints	
10,302.8	5,978.0	14	4 1/2	11.60	HCP-110	9,710.4	9,716.4	6.07	PUP	
10,433.4	5,979.9	14	4 1/2	11.60	HCP-110	9,716.4	9,720.4	3.95	PACKER	
10,493.8	5,979.8	14	4 1/2	11.60	HCP-110	9,720.4	9,723.5	3.10	PUP	
10,639.4	5,982.1	14	4 1/2	11.60	HCP-110	9,723.5	9,766.0	42.48	Casing Joints	
10,742.1	5,982.2	14	4 1/2	11.60	HCP-110	9,766.0	9,768.6	2.67	Frac Sleeve	
10,883.2	5,977.7	14	4 1/2	11.60	HCP-110	9,768.6	9,851.5	82.86	Casing Joints	
11,024.9	5,979.1	14	4 1/2	11.60	HCP-110	9,851.5	9,857.5	6.06	PUP	
11,160.4	5,978.5	14	4 1/2	11.60	HCP-110	9,857.5	9,861.5	3.94	PACKER	
11,218.5	5,978.5	14	4 1/2	11.60	HCP-110	9,861.5	9,864.5	3.06	PUP	
11,364.8	5,977.7	14	4 1/2	11.60	HCP-110	9,864.5	9,907.4	42.81	Casing Joints	
11,469.2	5,977.2	14	4 1/2	11.60	HCP-110	9,907.4	9,910.0	2.67	Frac Sleeve	
11,614.8	5,979.6	14	4 1/2	11.60	HCP-110	9,910.0	9,998.8	88.78	Casing Joints	
11,750.7	5,974.7	14	4 1/2	11.60	HCP-110	9,998.8	10,004.9	6.07	PUP	
11,809.7	5,977.7	14	4 1/2	11.60	HCP-110	10,004.9	10,008.8	3.96	PACKER	
11,948.2	5,977.5	14	4 1/2	11.60	HCP-110	10,008.8	10,011.9	3.07	PUP	
12,049.5	5,979.3	14	4 1/2	11.60	HCP-110	10,011.9	10,055.8	43.85	Casing Joints	
12,191.3	5,974.1	14	4 1/2	11.60	HCP-110	10,055.8	10,058.4	2.67	Frac Sleeve	
12,334.6	5,975.0	14	4 1/2	11.60	HCP-110	10,058.4	10,146.0	87.58	Casing Joints	
12,396.0	5,974.8	14	4 1/2	11.60	HCP-110	10,146.0	10,152.1	6.08	PUP	
12,453.1	5,975.2	14	4 1/2	11.60	HCP-110	10,152.1	10,156.0	3.96	PACKER	
			4 1/2	11.60	HCP-110	10,156.0	10,158.9	2.90	PUP	
			4 1/2	11.60	HCP-110	10,158.9	10,201.2	42.25	Casing Joints	
			4 1/2	11.60	HCP-110	10,201.2	10,203.9	2.67	Frac Sleeve	
			4 1/2	11.60	HCP-110	10,203.9	10,289.8	85.93	Casing Joints	
			4 1/2	11.60	HCP-110	10,289.8	10,295.9	6.06	PUP	
			4 1/2	11.60	HCP-110	10,295.9	10,299.8	3.95	PACKER	
			4 1/2	11.60	HCP-110	10,299.8	10,302.9	3.07	PUP	
			4 1/2	11.60	HCP-110	10,302.9	10,347.3	44.38	Casing Joints	
			4 1/2	11.60	HCP-110	10,347.3	10,349.9	2.67	Frac Sleeve	
			4 1/2	11.60	HCP-110	10,349.9	10,433.5	83.62	Casing Joints	
			4 1/2	11.60	HCP-110	10,433.5	10,439.6	6.06	PUP	
			4 1/2	11.60	HCP-110	10,439.6	10,443.6	3.95	PACKER	
			4 1/2	11.60	HCP-110	10,443.6	10,446.6	3.09	PUP	



PT - Completion Report - CR

Well Name: RAZOR FEDERAL 26I-3514B

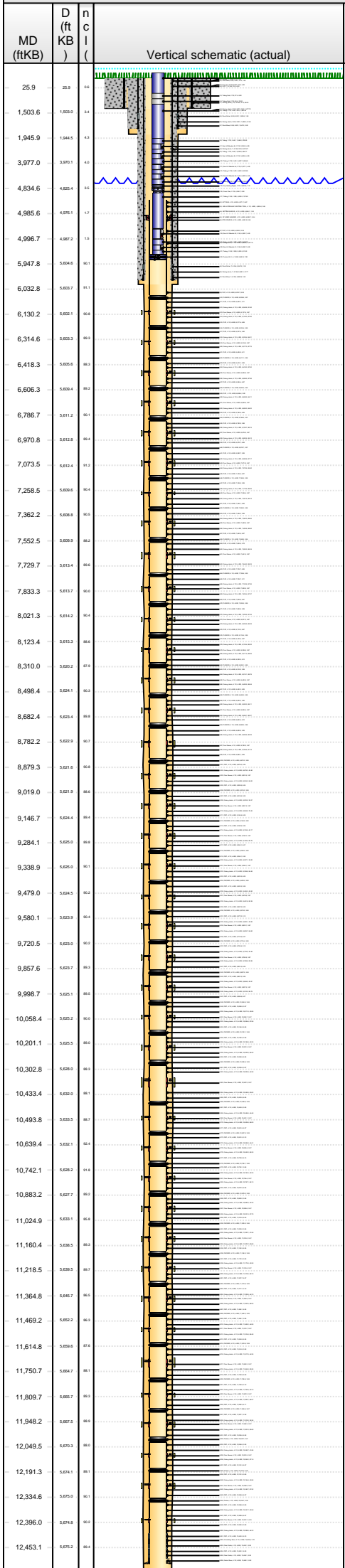
Lateral/Horizontal - Original Hole, 12/29/2014 12:53:22 PM				OD (in)	Wt (lb/ft)	Grade	Top (ftKB)	Btm (ftKB)	Len (ft)	Item Des	
MD (ftKB)	D (ft KB)	n c l ()	Vertical schematic (actual)	Logs							
25.9	25.9	84			4 1/2	11.60	HCP-110	10,446.6	10,491.1	44.48	Casing Joints
1,503.6	1,503.0	144		4 1/2	11.60	HCP-110	10,491.1	10,493.8	2.67	Frac Sleeve	
1,945.9	1,945.5	43		4 1/2	11.60	HCP-110	10,493.8	10,581.8	88.03	Casing Joints	
3,977.0	3,970.1	43		4 1/2	11.60	HCP-110	10,581.8	10,587.9	6.07	PUP	
4,834.6	4,825.4	33		4 1/2	11.60	HCP-110	10,587.9	10,591.9	3.98	PACKER	
4,985.6	4,981.1	17		4 1/2	11.60	HCP-110	10,591.9	10,595.0	3.10	PUP	
4,996.7	4,987.2	15		4 1/2	11.60	HCP-110	10,595.0	10,639.4	44.41	Casing Joints	
5,947.8	5,904.6	86.1		4 1/2	11.60	HCP-110	10,639.4	10,642.1	2.67	Frac Sleeve	
6,032.8	5,993.7	91.1		4 1/2	11.60	HCP-110	10,642.1	10,729.0	86.93	Casing Joints	
6,130.2	5,992.1	86.4		4 1/2	11.60	HCP-110	10,729.0	10,735.1	6.15	PUP	
6,314.6	5,993.3	86.3		4 1/2	11.60	HCP-110	10,735.1	10,739.1	3.96	PACKER	
6,418.3	5,995.5	86.3		4 1/2	11.60	HCP-110	10,739.1	10,742.2	3.08	PUP	
6,606.3	5,994.4	86.2		4 1/2	11.60	HCP-110	10,742.2	10,784.4	42.23	Casing Joints	
6,786.7	5,911.2	86.1		4 1/2	11.60	HCP-110	10,784.4	10,787.1	2.67	Frac Sleeve	
6,970.8	5,913.8	86.4		4 1/2	11.60	HCP-110	10,787.1	10,873.2	86.13	Casing Joints	
7,073.5	5,912.4	91.2		4 1/2	11.60	HCP-110	10,873.2	10,879.3	6.06	PUP	
7,258.5	5,909.5	86.4		4 1/2	11.60	HCP-110	10,879.3	10,883.2	3.96	PACKER	
7,362.2	5,908.8	86.3		4 1/2	11.60	HCP-110	10,883.2	10,886.3	3.08	PUP	
7,552.5	5,909.9	86.3		4 1/2	11.60	HCP-110	10,886.3	10,928.6	42.33	Casing Joints	
7,729.7	5,913.4	86.4		4 1/2	11.60	HCP-110	10,928.6	10,931.3	2.67	Frac Sleeve	
7,833.3	5,913.7	86.0		4 1/2	11.60	HCP-110	10,931.3	11,019.0	87.70	Casing Joints	
8,021.3	5,914.2	86.4		4 1/2	11.60	HCP-110	11,019.0	11,025.0	6.04	PUP	
8,123.4	5,915.3	86.4		4 1/2	11.60	HCP-110	11,025.0	11,029.0	3.96	PACKER	
8,310.0	5,920.2	87.4		4 1/2	11.60	HCP-110	11,029.0	11,032.1	3.06	PUP	
8,498.4	5,924.1	86.3		4 1/2	11.60	HCP-110	11,032.1	11,074.0	41.94	Casing Joints	
8,682.4	5,923.4	86.8		4 1/2	11.60	HCP-110	11,074.0	11,076.7	2.67	Frac Sleeve	
8,782.2	5,923.9	86.7		4 1/2	11.60	HCP-110	11,076.7	11,160.3	83.60	Casing Joints	
8,879.3	5,921.6	86.4		4 1/2	11.60	HCP-110	11,160.3	11,166.3	6.06	PUP	
9,019.0	5,921.9	86.4		4 1/2	11.60	HCP-110	11,166.3	11,170.3	3.96	PACKER	
9,146.7	5,924.4	86.4		4 1/2	11.60	HCP-110	11,170.3	11,173.3	3.05	PUP	
9,284.1	5,925.0	86.8		4 1/2	11.60	HCP-110	11,173.3	11,215.8	42.50	Casing Joints	
9,338.9	5,925.0	86.1		4 1/2	11.60	HCP-110	11,215.8	11,218.5	2.67	Frac Sleeve	
9,479.0	5,924.5	86.2		4 1/2	11.60	HCP-110	11,218.5	11,307.7	89.19	Casing Joints	
9,580.1	5,923.9	86.4		4 1/2	11.60	HCP-110	11,307.7	11,313.8	6.07	PUP	
9,720.5	5,923.0	86.2		4 1/2	11.60	HCP-110	11,313.8	11,317.7	3.95	PACKER	
9,857.6	5,923.7	86.3		4 1/2	11.60	HCP-110	11,317.7	11,320.8	3.10	PUP	
9,998.7	5,925.1	86.4		4 1/2	11.60	HCP-110	11,320.8	11,364.9	44.10	Casing Joints	
10,058.4	5,925.2	86.0		4 1/2	11.60	HCP-110	11,364.9	11,367.6	2.67	Frac Sleeve	
10,201.1	5,925.5	86.4		4 1/2	11.60	HCP-110	11,367.6	11,456.1	88.53	Casing Joints	
10,302.8	5,928.0	86.3		4 1/2	11.60	HCP-110	11,456.1	11,462.2	6.05	PUP	
10,433.4	5,929.0	86.1	4 1/2	11.60	HCP-110	11,462.2	11,466.1	3.95	PACKER		
10,493.8	5,923.5	86.1	4 1/2	11.60	HCP-110	11,466.1	11,469.2	3.08	PUP		
10,639.4	5,922.1	86.4	4 1/2	11.60	HCP-110	11,469.2	11,513.7	44.50	Casing Joints		
10,742.1	5,928.2	91.8	4 1/2	11.60	HCP-110	11,513.7	11,516.4	2.67	Frac Sleeve		
10,883.2	5,927.7	86.2	4 1/2	11.60	HCP-110	11,516.4	11,604.8	88.40	Casing Joints		
11,024.9	5,923.1	86.4	4 1/2	11.60	HCP-110	11,604.8	11,610.8	6.06	PUP		
11,160.4	5,928.5	86.3	4 1/2	11.60	HCP-110	11,610.8	11,614.8	3.98	PACKER		
11,218.5	5,928.5	86.7	4 1/2	11.60	HCP-110	11,614.8	11,617.9	3.08	PUP		
11,364.8	5,942.7	86.8	4 1/2	11.60	HCP-110	11,617.9	11,662.2	44.35	Casing Joints		
11,469.2	5,922.2	86.3	4 1/2	11.60	HCP-110	11,662.2	11,664.9	2.67	Frac Sleeve		
11,614.8	5,928.6	91.4	4 1/2	11.60	HCP-110	11,664.9	11,750.8	85.85	Casing Joints		
11,750.7	5,947.7	86.1	4 1/2	11.60	HCP-110	11,750.8	11,756.9	6.09	PUP		
11,809.7	5,927.7	86.3	4 1/2	11.60	HCP-110	11,756.9	11,760.8	3.96	PACKER		
11,948.2	5,927.5	86.8	4 1/2	11.60	HCP-110	11,760.8	11,763.9	3.10	PUP		
12,049.5	5,920.3	86.0	4 1/2	11.60	HCP-110	11,763.9	11,807.0	43.13	Casing Joints		
12,191.3	5,924.1	86.1	4 1/2	11.60	HCP-110	11,807.0	11,809.7	2.67	Frac Sleeve		
12,334.6	5,925.0	86.1	4 1/2	11.60	HCP-110	11,809.7	11,898.3	88.57	Casing Joints		
12,396.0	5,924.8	86.3	4 1/2	11.60	HCP-110	11,898.3	11,904.4	6.11	PUP		
12,453.1	5,925.2	86.4	4 1/2	11.60	HCP-110	11,904.4	11,907.1	2.67	PACKER		
			4 1/2	11.60	HCP-110	11,907.1	11,910.0	2.90	PUP		
			4 1/2	11.60	HCP-110	11,910.0	11,948.3	38.36	Casing Joints		
			4 1/2	11.60	HCP-110	11,948.3	11,951.0	2.67	Frac Sleeve		
			4 1/2	11.60	HCP-110	11,951.0	12,036.6	85.60	Casing Joints		
			4 1/2	11.60	HCP-110	12,036.6	12,042.7	6.08	PUP		
			4 1/2	11.60	HCP-110	12,042.7	12,046.6	3.91	Packer		
			4 1/2	11.60	HCP-110	12,046.6	12,049.7	3.09	PUP		
			4 1/2	11.60	HCP-110	12,049.7	12,091.5	41.86	Casing Joints		
			4 1/2	11.60	HCP-110	12,091.5	12,094.2	2.67	Frac Sleeve		
			4 1/2	11.60	HCP-110	12,094.2	12,181.3	87.14	Casing Joints		
			4 1/2	11.60	HCP-110	12,181.3	12,187.4	6.07	PUP		
			4 1/2	11.60	HCP-110	12,187.4	12,191.4	3.94	Packer		



PT - Completion Report - CR

Well Name: RAZOR FEDERAL 26I-3514B

Lateral/Horizontal - Original Hole, 12/29/2014 12:53:25 PM



MD (ftKB)	D (ft KB)	n	l	OD (in)	Wt (lb/ft)	Grade	Top (ftKB)	Btm (ftKB)	Len (ft)	Item Des
25.9	25.9	14		4 1/2	11.60	HCP-110	12,191.4	12,194.4	3.09	PUP
1,503.6	1,503.0	14		4 1/2	11.60	HCP-110	12,194.4	12,238.0	43.56	Casing Joints
1,945.9	1,945.0	14		4 1/2	11.60	HCP-110	12,238.0	12,240.7	2.67	Frac Sleeve
3,977.0	3,970.0	14		4 1/2	11.60	HCP-110	12,240.7	12,328.6	87.92	Casing Joints
4,834.6	4,825.4	14		4 1/2	11.60	HCP-110	12,328.6	12,334.7	6.07	PUP
4,985.6	4,981.1	14		4 1/2	11.60	HCP-110	12,334.7	12,338.6	3.94	Packer
4,996.7	4,987.2	14		4 1/2	11.60	HCP-110	12,338.6	12,341.7	3.09	PUP
5,947.8	5,904.6	14		4 1/2	11.60	HCP-110	12,341.7	12,385.6	43.94	Casing Joints
6,032.8	6,023.7	14		4 1/2	11.60	HCP-110	12,385.6	12,391.7	6.07	PUP
6,130.2	6,121.1	14		4 1/2	11.60	HCP-110	12,391.7	12,395.9	4.23	Frac Sleeve
6,314.6	6,305.5	14		4 1/2	11.60	HCP-110	12,395.9	12,399.0	3.08	PUP
6,418.3	6,409.2	14		4 1/2	11.60	HCP-110	12,399.0	12,443.2	44.15	Casing Joints
6,606.3	6,597.2	14		4 1/2	11.60	HCP-110	12,443.2	12,449.4	6.23	PUP
6,786.7	6,777.6	14		4 1/2	11.60	HCP-110	12,449.4	12,452.1	2.72	Circulating Shoe
6,970.8	6,961.7	14		4 1/2	11.60	HCP-110	12,452.1	12,453.1	0.95	Float Collar
7,073.5	7,064.4	14		4 1/2	11.60	HCP-110	12,453.1	12,459.2	6.09	PUP
7,258.5	7,249.4	14		4 1/2	11.60	HCP-110	12,459.2	12,460.1	0.93	Float Collar
7,362.2	7,353.1	14		4 1/2	11.60	HCP-110	12,460.1	12,461.0	0.92	Guide Shoe

Cement

Description	Pump Start Date	Top (ftKB)	Btm (ftKB)	Top Meas Meth	MD Tagged (...)
Conductor Cement	3/28/2014	21.0	80.0	Returns to Surface	
Wellbore Original Hole	Fluid Type: Lead Cement	Amount (sacks):	Class: Ready Mix	Est Top (ftKB): 21.0	Est Btm (ftKB): 80.0
Surface Casing Cement	6/27/2014	21.0	1,549.2	Returns to Surface	
Wellbore Original Hole	Fluid Type: Preflush	Amount (sacks):	Class:	Est Top (ftKB):	Est Btm (ftKB):
Wellbore Original Hole	Fluid Type: Primary Cement	665	C	21.0	1,549.2
Wellbore Original Hole	Fluid Type: Displacement	Amount (sacks):	Class:	Est Top (ftKB): 21.0	Est Btm (ftKB):
Intermediate Casing Cement	6/30/2014	21.0	5,992.4	Returns to Surface	
Wellbore Original Hole	Fluid Type: Preflush	Amount (sacks):	Class:	Est Top (ftKB):	Est Btm (ftKB):
Wellbore Original Hole	Fluid Type: Vis sweep	Amount (sacks):	Class:	Est Top (ftKB):	Est Btm (ftKB):
Wellbore Original Hole	Fluid Type: Lead Cement	455	G	21.0	4,630.0
Wellbore Original Hole	Fluid Type: Tail Cement	210	G	4,630.0	5,984.0
Wellbore Original Hole	Fluid Type: Displacement	Amount (sacks):	Class:	Est Top (ftKB): 21.0	Est Btm (ftKB):

Perforations

Type of Hole	Date	Top (ftKB)	Btm (ftKB)	Zone	Shot...	Calcul...

Sand Frac on 9/12/2014 06:00

Comment	Min Top Depth (ftKB)	Max Btm Depth (ft...)	Frac Length (ft)
Treatment End Date:9/14/2014; Number of staged intervals: 40; Min frac gradient: 0.802 psi/ft; Number of sleeves: 40; 75169 bbl QuadraFrac XL Gel, 11485 bbl QuadraFrac Linear Gel, 32102 bbl Slickwater	6,127.6	12,395.9	

Stim/Treat Fluids

Fluid Name	Proppant Frm (lb)	Total Clean V...	Avg Trea...	Max Trea...	Avg Trea...	P Max (psi)	Frac Gra...
QuadraFrac XL Gel; Linear Gel	6,083,391.0	118755.90	49.50	58.70	5,014.0	8,938.0	0.80

Stim/Treat Stages

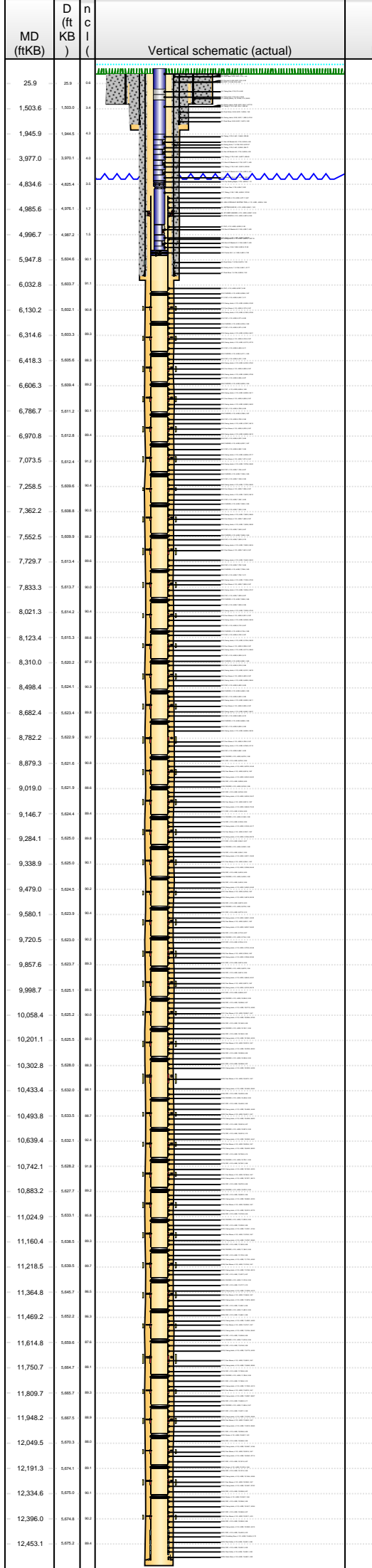
Stg #	Start Date	Top Depth (ftKB)	Bottom Depth (ftKB)	Vol Clean Pump (bbl)	Vol Slurry (bbl)
1	9/12/2014	12,391.7	12,395.9	3182.20	3288.40
Add		Type	Amount	Units	Sand Size
Proppant		20/40 WS	95,903.0	lb	20/40
Proppant		40/70 WS	2,712.0	lb	40/70
2	9/12/2014	12,238.0	12,240.7	2663.70	2773.00
Add		Type	Amount	Units	Sand Size
Proppant		20/40 WS	98,504.0	lb	20/40
Proppant		40/70 WS	3,016.0	lb	40/70
3	9/12/2014	12,091.5	12,094.2	2854.10	2961.80
Add		Type	Amount	Units	Sand Size
Proppant		20/40 WS	97,450.0	lb	20/40
Proppant		40/70 WS	2,595.0	lb	40/70
4	9/12/2014	11,948.3	11,951.0	2988.00	3154.60
Add		Type	Amount	Units	Sand Size
Proppant		20/40 WS	151,939.0	lb	20/40
Proppant		40/70 WS	2,825.0	lb	40/70
5	9/12/2014	11,807.0	11,809.7	2959.00	3125.60
Add		Type	Amount	Units	Sand Size
Proppant		20/40 WS	152,014.0	lb	20/40



PT - Completion Report - CR

Well Name: RAZOR FEDERAL 26I-3514B

Lateral/Horizontal - Original Hole, 12/29/2014 12:53:28 PM

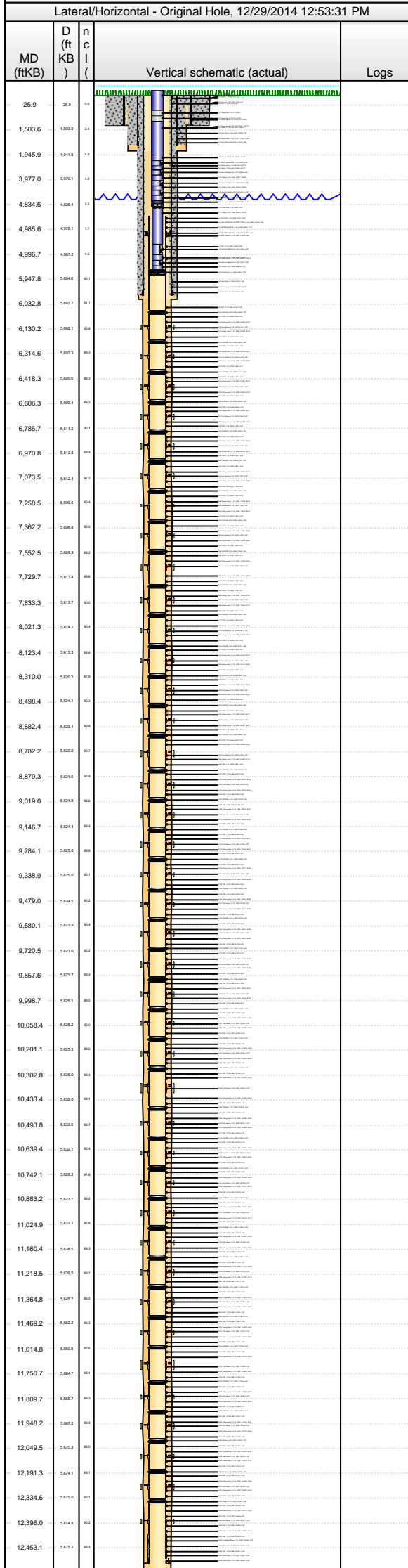


Add		Type	Amount	Units	Sand Size	
Proppant		40/70 WS	2,701.0	lb	40/70	
Stg #	Start Date	Top Depth (ftKB)	Bottom Depth (ftKB)	Vol Clean Pump (bbl)	Vol Slurry (bbl)	
6	9/12/2014	11,662.2	11,664.9	2964.70	3131.70	
Add		Type	Amount	Units	Sand Size	
Proppant		20/40 WS	152,203.0	lb	20/40	
Proppant		40/70 WS	2,899.0	lb	40/70	
Stg #	Start Date	Top Depth (ftKB)	Bottom Depth (ftKB)	Vol Clean Pump (bbl)	Vol Slurry (bbl)	
7	9/12/2014	11,513.7	11,516.4	3189.10	3358.40	
Add		Type	Amount	Units	Sand Size	
Proppant		20/40 WS	154,244.0	lb	20/40	
Proppant		40/70 WS	3,000.0	lb	40/70	
Stg #	Start Date	Top Depth (ftKB)	Bottom Depth (ftKB)	Vol Clean Pump (bbl)	Vol Slurry (bbl)	
8	9/12/2014	11,364.9	11,367.6	2966.50	3133.70	
Add		Type	Amount	Units	Sand Size	
Proppant		20/40 WS	152,500.0	lb	20/40	
Proppant		40/70 WS	2,829.0	lb	40/70	
Stg #	Start Date	Top Depth (ftKB)	Bottom Depth (ftKB)	Vol Clean Pump (bbl)	Vol Slurry (bbl)	
9	9/12/2014	11,215.8	11,218.5	2971.30	3140.80	
Add		Type	Amount	Units	Sand Size	
Proppant		20/40 WS	154,539.0	lb	20/40	
Proppant		40/70 WS	2,856.0	lb	40/70	
Stg #	Start Date	Top Depth (ftKB)	Bottom Depth (ftKB)	Vol Clean Pump (bbl)	Vol Slurry (bbl)	
10	9/12/2014	11,074.0	11,076.7	3271.40	3429.30	
Add		Type	Amount	Units	Sand Size	
Proppant		20/40 WS	143,694.0	lb	20/40	
Proppant		40/70 WS	2,930.0	lb	40/70	
Stg #	Start Date	Top Depth (ftKB)	Bottom Depth (ftKB)	Vol Clean Pump (bbl)	Vol Slurry (bbl)	
11	9/12/2014	10,928.6	10,931.3	2973.00	3143.40	
Add		Type	Amount	Units	Sand Size	
Proppant		20/40 WS	155,916.0	lb	20/40	
Proppant		40/70 WS	2,359.0	lb	40/70	
Stg #	Start Date	Top Depth (ftKB)	Bottom Depth (ftKB)	Vol Clean Pump (bbl)	Vol Slurry (bbl)	
12	9/12/2014	10,784.4	10,787.1	3020.80	3188.20	
Add		Type	Amount	Units	Sand Size	
Proppant		20/40 WS	152,995.0	lb	20/40	
Proppant		40/70 WS	2,474.0	lb	40/70	
Stg #	Start Date	Top Depth (ftKB)	Bottom Depth (ftKB)	Vol Clean Pump (bbl)	Vol Slurry (bbl)	
13	9/13/2014	10,639.4	10,642.1	3012.50	3184.20	
Add		Type	Amount	Units	Sand Size	
Proppant		20/40 WS	156,702.0	lb	20/40	
Proppant		40/70 WS	2,819.0	lb	40/70	
Stg #	Start Date	Top Depth (ftKB)	Bottom Depth (ftKB)	Vol Clean Pump (bbl)	Vol Slurry (bbl)	
14	9/13/2014	10,491.1	10,493.8	2964.00	3133.40	
Add		Type	Amount	Units	Sand Size	
Proppant		20/40 WS	155,145.0	lb	20/40	
Proppant		40/70 WS	2,232.0	lb	40/70	
Stg #	Start Date	Top Depth (ftKB)	Bottom Depth (ftKB)	Vol Clean Pump (bbl)	Vol Slurry (bbl)	
15	9/13/2014	10,347.3	10,349.9	2903.70	3087.30	
Add		Type	Amount	Units	Sand Size	
Proppant		20/40 WS	167,581.0	lb	20/40	
Proppant		40/70 WS	2,909.0	lb	40/70	
Stg #	Start Date	Top Depth (ftKB)	Bottom Depth (ftKB)	Vol Clean Pump (bbl)	Vol Slurry (bbl)	
16	9/13/2014	10,201.2	10,203.9	3009.90	3192.10	
Add		Type	Amount	Units	Sand Size	
Proppant		20/40 WS	166,273.0	lb	20/40	
Proppant		40/70 WS	2,970.0	lb	40/70	
Stg #	Start Date	Top Depth (ftKB)	Bottom Depth (ftKB)	Vol Clean Pump (bbl)	Vol Slurry (bbl)	
17	9/13/2014	10,055.8	10,058.4	3002.70	3172.50	
Add		Type	Amount	Units	Sand Size	
Proppant		20/40 WS	154,699.0	lb	20/40	
Proppant		40/70 WS	3,030.0	lb	40/70	
Stg #	Start Date	Top Depth (ftKB)	Bottom Depth (ftKB)	Vol Clean Pump (bbl)	Vol Slurry (bbl)	
18	9/13/2014	9,907.4	9,910.0	2955.60	3121.10	
Add		Type	Amount	Units	Sand Size	
Proppant		20/40 WS	150,589.0	lb	20/40	
Proppant		40/70 WS	3,102.0	lb	40/70	
Stg #	Start Date	Top Depth (ftKB)	Bottom Depth (ftKB)	Vol Clean Pump (bbl)	Vol Slurry (bbl)	
19	9/13/2014	9,766.0	9,768.6	2941.40	3112.10	
Add		Type	Amount	Units	Sand Size	
Proppant		20/40 WS	155,489.0	lb	20/40	
Proppant		40/70 WS	3,029.0	lb	40/70	
Stg #	Start Date	Top Depth (ftKB)	Bottom Depth (ftKB)	Vol Clean Pump (bbl)	Vol Slurry (bbl)	
20	9/13/2014	9,623.1	9,625.8	2943.70	3106.80	
Add		Type	Amount	Units	Sand Size	
Proppant		20/40 WS	148,947.0	lb	20/40	
Proppant		40/70 WS	2,561.0	lb	40/70	
Stg #	Start Date	Top Depth (ftKB)	Bottom Depth (ftKB)	Vol Clean Pump (bbl)	Vol Slurry (bbl)	
21	9/13/2014	9,478.9	9,481.6	3067.10	3238.00	
Add		Type	Amount	Units	Sand Size	
Proppant		20/40 WS	155,853.0	lb	20/40	
Proppant		40/70 WS	2,912.0	lb	40/70	
Stg #	Start Date	Top Depth (ftKB)	Bottom Depth (ftKB)	Vol Clean Pump (bbl)	Vol Slurry (bbl)	
22	9/13/2014	9,336.1	9,338.8	2955.20	3121.80	



PT - Completion Report - CR

Well Name: RAZOR FEDERAL 26I-3514B



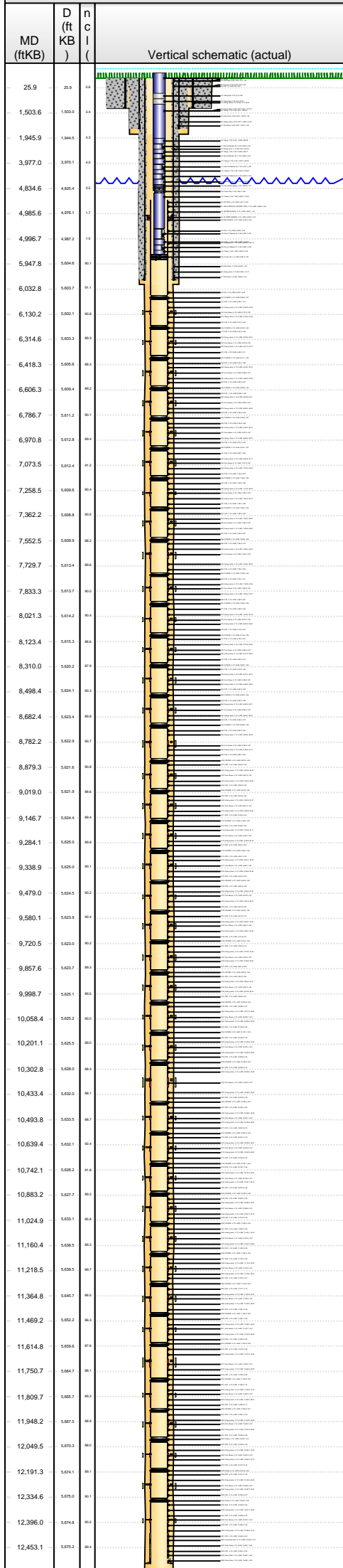
Add		Type	Amount	Units	Sand Size	
Proppant		20/40 WS	151,783.0	lb	20/40	
Proppant		40/70 WS	2,998.0	lb	40/70	
Stg #	Start Date	Top Depth (ftKB)	Bottom Depth (ftKB)	Vol Clean Pump (bbl)	Vol Slurry (bbl)	
23	9/13/2014	9,195.7	9,198.4	2965.40	3130.90	
Add		Type	Amount	Units	Sand Size	
Proppant		20/40 WS	150,720.0	lb	20/40	
Proppant		40/70 WS	2,988.0	lb	40/70	
Stg #	Start Date	Top Depth (ftKB)	Bottom Depth (ftKB)	Vol Clean Pump (bbl)	Vol Slurry (bbl)	
24	9/13/2014	9,061.3	9,064.0	2929.90	3094.50	
Add		Type	Amount	Units	Sand Size	
Proppant		20/40 WS	150,070.0	lb	20/40	
Proppant		40/70 WS	2,792.0	lb	40/70	
Stg #	Start Date	Top Depth (ftKB)	Bottom Depth (ftKB)	Vol Clean Pump (bbl)	Vol Slurry (bbl)	
25	9/13/2014	8,921.6	8,924.3	2986.50	3148.70	
Add		Type	Amount	Units	Sand Size	
Proppant		20/40 WS	147,813.0	lb	20/40	
Proppant		40/70 WS	2,810.0	lb	40/70	
Stg #	Start Date	Top Depth (ftKB)	Bottom Depth (ftKB)	Vol Clean Pump (bbl)	Vol Slurry (bbl)	
26	9/13/2014	8,782.0	8,784.9	2961.10	3129.90	
Add		Type	Amount	Units	Sand Size	
Proppant		20/40 WS	153,959.0	lb	20/40	
Proppant		40/70 WS	2,813.0	lb	40/70	
Stg #	Start Date	Top Depth (ftKB)	Bottom Depth (ftKB)	Vol Clean Pump (bbl)	Vol Slurry (bbl)	
27	9/13/2014	8,593.4	8,596.1	2942.30	3109.70	
Add		Type	Amount	Units	Sand Size	
Proppant		20/40 WS	152,582.0	lb	20/40	
Proppant		40/70 WS	2,860.0	lb	40/70	
Stg #	Start Date	Top Depth (ftKB)	Bottom Depth (ftKB)	Vol Clean Pump (bbl)	Vol Slurry (bbl)	
28	9/13/2014	8,402.9	8,405.5	2967.30	3134.80	
Add		Type	Amount	Units	Sand Size	
Proppant		20/40 WS	152,742.0	lb	20/40	
Proppant		40/70 WS	2,814.0	lb	40/70	
Stg #	Start Date	Top Depth (ftKB)	Bottom Depth (ftKB)	Vol Clean Pump (bbl)	Vol Slurry (bbl)	
29	9/13/2014	8,208.6	8,211.3	2940.60	3104.90	
Add		Type	Amount	Units	Sand Size	
Proppant		20/40 WS	149,777.0	lb	20/40	
Proppant		40/70 WS	2,828.0	lb	40/70	
Stg #	Start Date	Top Depth (ftKB)	Bottom Depth (ftKB)	Vol Clean Pump (bbl)	Vol Slurry (bbl)	
30	9/13/2014	8,021.4	8,024.0	2925.60	3091.80	
Add		Type	Amount	Units	Sand Size	
Proppant		20/40 WS	151,542.0	lb	20/40	
Proppant		40/70 WS	2,830.0	lb	40/70	
Stg #	Start Date	Top Depth (ftKB)	Bottom Depth (ftKB)	Vol Clean Pump (bbl)	Vol Slurry (bbl)	
31	9/13/2014	7,830.8	7,833.4	2935.50	3103.10	
Add		Type	Amount	Units	Sand Size	
Proppant		20/40 WS	152,878.0	lb	20/40	
Proppant		40/70 WS	2,830.0	lb	40/70	
Stg #	Start Date	Top Depth (ftKB)	Bottom Depth (ftKB)	Vol Clean Pump (bbl)	Vol Slurry (bbl)	
32	9/14/2014	7,641.5	7,644.2	2919.30	3087.10	
Add		Type	Amount	Units	Sand Size	
Proppant		20/40 WS	153,139.0	lb	20/40	
Proppant		40/70 WS	2,738.0	lb	40/70	
Stg #	Start Date	Top Depth (ftKB)	Bottom Depth (ftKB)	Vol Clean Pump (bbl)	Vol Slurry (bbl)	
33	9/14/2014	7,450.9	7,453.6	2911.20	3077.60	
Add		Type	Amount	Units	Sand Size	
Proppant		20/40 WS	151,755.0	lb	20/40	
Proppant		40/70 WS	2,831.0	lb	40/70	
Stg #	Start Date	Top Depth (ftKB)	Bottom Depth (ftKB)	Vol Clean Pump (bbl)	Vol Slurry (bbl)	
34	9/14/2014	7,258.4	7,261.0	2939.80	3109.80	
Add		Type	Amount	Units	Sand Size	
Proppant		20/40 WS	155,049.0	lb	20/40	
Proppant		40/70 WS	2,888.0	lb	40/70	
Stg #	Start Date	Top Depth (ftKB)	Bottom Depth (ftKB)	Vol Clean Pump (bbl)	Vol Slurry (bbl)	
35	9/14/2014	7,071.0	7,073.6	2928.60	3097.60	
Add		Type	Amount	Units	Sand Size	
Proppant		20/40 WS	154,047.0	lb	20/40	
Proppant		40/70 WS	2,909.0	lb	40/70	
Stg #	Start Date	Top Depth (ftKB)	Bottom Depth (ftKB)	Vol Clean Pump (bbl)	Vol Slurry (bbl)	
36	9/14/2014	6,879.9	6,882.6	2921.10	3087.80	
Add		Type	Amount	Units	Sand Size	
Proppant		20/40 WS	151,865.0	lb	20/40	
Proppant		40/70 WS	2,928.0	lb	40/70	
Stg #	Start Date	Top Depth (ftKB)	Bottom Depth (ftKB)	Vol Clean Pump (bbl)	Vol Slurry (bbl)	
37	9/14/2014	6,693.6	6,696.3	2911.30	3078.00	
Add		Type	Amount	Units	Sand Size	
Proppant		20/40 WS	152,736.0	lb	20/40	
Proppant		40/70 WS	2,081.0	lb	40/70	
Stg #	Start Date	Top Depth (ftKB)	Bottom Depth (ftKB)	Vol Clean Pump (bbl)	Vol Slurry (bbl)	
38	9/14/2014	6,505.8	6,508.5	2956.50	3129.80	
Add		Type	Amount	Units	Sand Size	
Proppant		20/40 WS	158,160.0	lb	20/40	
Proppant		40/70 WS	2,784.0	lb	40/70	



PT - Completion Report - CR

Well Name: RAZOR FEDERAL 26I-3514B

Lateral/Horizontal - Original Hole, 12/29/2014 12:53:34 PM



Stim/Treat Stages							
Stg #	39						
Start Date	9/14/2014						
Top Depth (ftKB)	6,314.6						
Bottom Depth (ftKB)	6,317.3						
Vol Clean Pump (bbl)	2958.20						
Vol Slurry (bbl)	3124.60						
Add	Type						
Proppant	20/40 WS						
Proppant	40/70 WS						
Amount	151,310.0 lb						
Amount	3,213.0 lb						
Units	20/40						
Units	40/70						
Sand Size							
Stg #	40						
Start Date	9/14/2014						
Top Depth (ftKB)	6,127.6						
Bottom Depth (ftKB)	6,130.3						
Vol Clean Pump (bbl)	2996.10						
Vol Slurry (bbl)	3166.80						
Add	Type						
Proppant	20/40 WS						
Proppant	40/70 WS						
Amount	155,785.0 lb						
Amount	2,805.0 lb						
Units	20/40						
Units	40/70						
Sand Size							
Tubing							
Set Depth (ftKB)	5,669.3						
Comment							
Run Date	10/17/2014						
Pull Date							
Item Des	OD (in)	Wt (lb/ft)	Grade	Jts	Len (ft)	Top (ftKB)	Btm (ftKB)
Tubing Hanger				1	0.50	4.3	4.8
Tubing	2 7/8	6.50	L-80	1	32.63	4.8	37.4
Tubing Sub	2 7/8			1	6.00	37.4	43.4
Tubing Sub	2 7/8			1	10.00	43.4	53.4
Tubing	2 7/8	6.50	L-80	58	1,892.54	53.4	1,946.0
Tubing	2 7/8	6.50	L-80	30	978.90	1,946.0	2,924.9
Gas Lift Mandrel #6	2 7/8			1	4.05	2,924.9	2,928.9
Tubing	2 7/8	6.50	L-80	17	554.71	2,928.9	3,483.6
Gas Lift Mandrel #5	2 7/8			1	4.05	3,483.6	3,487.7
Tubing	2 7/8	6.50	L-80	15	489.45	3,487.7	3,977.1
Gas Lift Mandrel #4	2 7/8			1	4.05	3,977.1	3,981.2
Tubing	2 7/8	6.50	L-80	16	522.08	3,981.2	4,503.2
Gas Lift Mandrel #3	2 7/8			1	4.05	4,503.2	4,507.3
Tubing	2 7/8	6.50	L-80		326.30	4,507.3	4,833.6
Cup Seating Nipple	2 7/8			1	1.10	4,833.6	4,834.7
Cross Over	2 7/8			1	0.50	4,834.7	4,835.2
Tubing	2 3/8	4.70	J-55	5	157.50	4,835.2	4,992.7
Gas Lift Mandrel #2	2 3/8			1	4.05	4,992.7	4,996.7
Tubing	2 3/8	4.70	J-55	20	630.00	4,996.7	5,626.7
Gas Lift Mandrel #1	2 3/8			1	4.05	5,626.7	5,630.8
Tubing	2 3/8	4.60	J-55	1	31.50	5,630.8	5,662.3
Packer AS-1	4			1	7.00	5,662.3	5,669.3
Rod Strings							
Rod Description	Comment						
Run Date	Pull Date						
Item Des	OD (in)	Wt (lb/ft)	Jts	Len (ft)	Top (ftKB)	Btm (ftKB)	
Other Strings							
Set Depth (ftKB)	Comment						
Run Date	Pull Date						
Item Des	OD (in)	Len (ft)	Top (ftKB)	Btm (ftKB)	ID (in)		
Other In Hole							
Description	OD (in)	Run Date	Pull Date	Top (ftKB)	Btm (ftKB)		
Comment							
Bottom Hole Cores							
Core #	Date	Top (ftKB)	Btm (ftKB)	Wellbore	Recovered (ft)	% Rec...	
Comment							