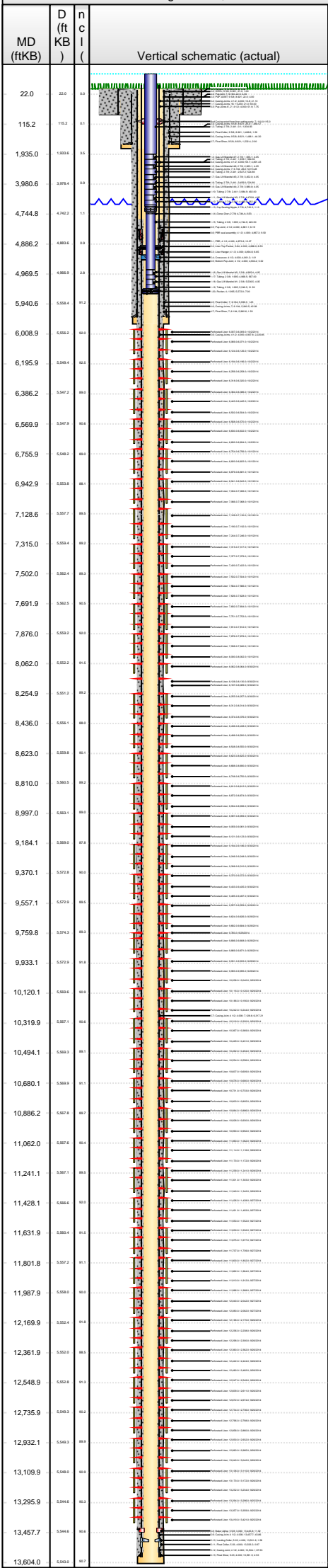




Lease Review
Well Name: RAZOR 26I-2315A

API Number 051233848400	WPC ID 1CO076997	Well Permit Number	Field Name DJ Horizontal Niobrara	County Weld	State CO
Well Configuration Type Lateral/Horizontal	Orig KB Elv (ft) 4,733.00	Ground Elevation (ft) 4,712.00	Casing Flange Elevation (ft)	Tubing Head Elevation (ft)	Total Depth (ftKB) 13,604.0
Original Spud Date 6/7/2014	Completion Date 10/2/2014	Asset Group Redtail	Responsible Engineer Charles Ohlson	N/S Dist (ft) 2,242.0	N/S Ref FSL
				E/W Dist (ft) 629.0	E/W Ref FEL
Lot	Quarter 1 NE	Quarter 2 SE	Quarter 3	Quarter 4	Section 26
			Section Suffix	Section Type	Township 10 N
					Township N/S Dir N
					Range 58
					Range E/W Dir W
					Meridian

Lateral/Horizontal - Original Hole, 12/29/2014 11:39:59 AM



Wellbore Sections

Section Des	Wellbore Name	Start Date	Size (in)	Act Top (ftKB)	Act Btm (ftKB)
Conductor	Original Hole	3/28/2014	24	21.0	80.0
Surface	Original Hole	6/7/2014	13 1/2	80.0	1,550.0
Intermediate	Original Hole	6/9/2014	8 3/4	1,550.0	6,006.0
Lateral	Original Hole	6/12/2014	6 1/8	6,006.0	13,604.0

Conductor Pipe, 80.0ftKB

OD (in)	Wt (lb/ft)	Grade	Top (ftKB)	Btm (ftKB)	Len (ft)	Item Des
16	65.00	H-40	21.0	80.0	59.00	Casing Joints

Surface Csg, 1,534.4ftKB

OD (in)	Wt (lb/ft)	Grade	Top (ftKB)	Btm (ftKB)	Len (ft)	Item Des
9 5/8	36.00	J-55	21.0	21.0	0.00	Landing Joint
9 5/8	36.00	J-55	21.0	22.0	1.00	WELL
9 5/8	36.00	J-55	22.0	26.0	4.00	PUP JOINT
9 5/8	36.00	J-55	26.0	1,486.6	1,460.57	Casing Joints
9 5/8	36.00	J-55	1,486.6	1,488.1	1.50	Float Collar
9 5/8	36.00	J-55	1,488.1	1,532.4	44.30	Casing Joints
9 5/8	36.00	J-55	1,532.4	1,534.4	2.00	Float Shoe

Frac String, 4,876.8ftKB

OD (in)	Wt (lb/ft)	Grade	Top (ftKB)	Btm (ftKB)	Len (ft)	Item Des
		HCP-110	8.8	10.8	1.96	Casing Hanger
4 1/2	11.60	HCP-110	10.8	51.9	41.10	Casing Joints
4 1/2	11.60	HCP-110	51.9	59.7	7.75	Pup Joints 6', 2'
4 1/2	11.60	HCP-110	59.7	4,861.1	4,801.43	Casing Joints
4 1/2	11.60	HCP-110	4,861.1	4,867.3	6.19	Pup Joint
4 1/2			4,867.3	4,876.8	9.50	PBR seal assembly

Intermediate Csg, 5,984.1ftKB

OD (in)	Wt (lb/ft)	Grade	Top (ftKB)	Btm (ftKB)	Len (ft)	Item Des
7	29.00	L-80	21.0	21.0	0.00	Landing joint
7	29.00	L-80	21.0	22.0	1.00	Hanger
7	29.00	L-80	22.0	26.0	4.00	Pup joint
7	29.00	L-80	26.0	5,939.3	5,913.28	Casing Joints
7	29.00	L-80	5,939.3	5,940.5	1.25	Float Collar
7	29.00	L-80	5,940.5	5,982.6	42.08	Casing Joints
7	29.00	L-80	5,982.6	5,984.1	1.50	Float Shoe

Liner, 13,594.0ftKB

OD (in)	Wt (lb/ft)	Grade	Top (ftKB)	Btm (ftKB)	Len (ft)	Item Des
4 1/2			4,873.8	4,886.0	12.27	PBR
5.843			4,886.0	4,894.6	8.53	Liner Top Packer
4 1/2			4,894.6	4,901.2	6.65	Liner Hanger
4 1/2			4,901.2	4,902.2	1.01	Crossover
4 1/2	11.60	L-80	4,902.2	4,907.8	5.52	Bottom Pup Joint
4 1/2	11.60	L-80	4,907.8	7,128.6	2,220.85	Casing Joints
4 1/2	11.60	L-80	7,128.6	13,445.8	6,317.21	Casing Joint
5 5/8			13,445.8	13,457.7	11.92	Baker Alpha
4 1/2	11.60	L-80	13,457.7	13,501.6	43.86	Casing Joint
5.031			13,501.6	13,503.2	1.58	Landing Collar
5.031			13,503.2	13,504.1	0.97	Float Collar
4 1/2	11.60	L-80	13,504.1	13,591.5	87.33	Casing Joint
5.031			13,591.5	13,594.0	2.53	Float Shoe

Cement Stages

Des	Pump Start Date	Drill Out Date	Top (ftKB)	Btm (ftKB)	Top Meas Meth
Conductor Cement	3/28/2014		21.0	80.0	Returns to Surface
Surface Casing Cement	6/8/2014		21.0	1,534.4	Returns to Surface
Intermediate Casing Cement	6/11/2014		21.0	5,984.0	Returns to Surface
Liner Cement	6/25/2014		4,850.0	13,594.0	Volume Calculations

Perforations

Type of Hole	Date	Top (ftKB)	Btm (ftKB)	Zone
Perforated Liner	10/2/2014	6,007.0	6,009.0	Niobrara, Original Hole
Perforated Liner	10/2/2014	6,069.0	6,071.0	Niobrara, Original Hole
Perforated Liner	10/2/2014	6,124.0	6,126.0	Niobrara, Original Hole
Perforated Liner	10/2/2014	6,194.0	6,196.0	Niobrara, Original Hole
Perforated Liner	10/2/2014	6,256.0	6,258.0	Niobrara, Original Hole
Perforated Liner	10/2/2014	6,318.0	6,320.0	Niobrara, Original Hole
Perforated Liner	10/2/2014	6,384.0	6,386.0	Niobrara, Original Hole
Perforated Liner	10/2/2014	6,443.0	6,445.0	Niobrara, Original Hole
Perforated Liner	10/2/2014	6,502.0	6,504.0	Niobrara, Original Hole



Lease Review
Well Name: RAZOR 26I-2315A

API Number 051233848400		WPC ID 1CO076997		Well Permit Number		Field Name DJ Horizontal Niobrara		County Weld		State CO					
Well Configuration Type Lateral/Horizontal		Orig KB Elv (ft) 4,733.00		Ground Elevation (ft) 4,712.00		Casing Flange Elevation (ft)		Tubing Head Elevation (ft)		Total Depth (ftKB) 13,604.0					
Original Spud Date 6/7/2014		Completion Date 10/2/2014		Asset Group Redtail		Responsible Engineer Charles Ohlson		N/S Dist (ft) 2,242.0		N/S Ref FSL		E/W Dist (ft) 629.0		E/W Ref FEL	
Lot		Quarter 1 NE	Quarter 2 SE	Quarter 3	Quarter 4	Section 26	Section Suffix	Section Type	Township 10 N	Township N/S Dir	Range 58	Range E/W Dir W	Meridian		
Lateral/Horizontal - Original Hole, 12/29/2014 11:40:01 AM						Perforations									
MD (ftKB)		D (ft KB)	n ()	Vertical schematic (actual)		Logs		Type of Hole	Date	Top (ftKB)	Btm (ftKB)	Zone			
22.0 115.2 1,935.0 3,980.6 4,744.8 4,886.2 4,969.5 5,940.6 6,008.9 6,195.9 6,386.2 6,569.9 6,755.9 6,942.9 7,128.6 7,315.0 7,502.0 7,691.9 7,876.0 8,062.0 8,254.9 8,436.0 8,623.0 8,810.0 8,997.0 9,184.1 9,370.1 9,557.1 9,759.8 9,933.1 10,120.1 10,319.9 10,494.1 10,680.1 10,886.2 11,062.0 11,241.1 11,428.1 11,631.9 11,801.8 11,987.9 12,169.9 12,361.9 12,548.9 12,735.9 12,932.1 13,109.9 13,295.9 13,457.7 13,604.0	22.0 115.2 1,935.0 3,980.6 4,744.8 4,886.2 4,969.5 5,940.6 6,008.9 6,195.9 6,386.2 6,569.9 6,755.9 6,942.9 7,128.6 7,315.0 7,502.0 7,691.9 7,876.0 8,062.0 8,254.9 8,436.0 8,623.0 8,810.0 8,997.0 9,184.1 9,370.1 9,557.1 9,759.8 9,933.1 10,120.1 10,319.9 10,494.1 10,680.1 10,886.2 11,062.0 11,241.1 11,428.1 11,631.9 11,801.8 11,987.9 12,169.9 12,361.9 12,548.9 12,735.9 12,932.1 13,109.9 13,295.9 13,457.7 13,604.0	0.0 0.1 3.5 7.9 1.1 0.9 7.5 97.0 90.0 													



Lease Review
Well Name: RAZOR 26I-2315A

API Number 051233848400			WPC ID 1CO076997			Well Permit Number			Field Name DJ Horizontal Niobrara			County Weld			State CO								
Well Configuration Type Lateral/Horizontal				Orig KB Elv (ft) 4,733.00			Ground Elevation (ft) 4,712.00			Casing Flange Elevation (ft)			Tubing Head Elevation (ft)			Total Depth (ftKB) 13,604.0							
Original Spud Date 6/7/2014			Completion Date 10/2/2014			Asset Group Redtail			Responsible Engineer Charles Ohlson			N/S Dist (ft) 2,242.0			N/S Ref FSL		E/W Dist (ft) 629.0		E/W Ref FEL				
Lot		Quarter 1 NE		Quarter 2 SE		Quarter 3		Quarter 4		Section 26		Section Suffix		Section Type		Township 10 N		Township N/S Dir		Range 58 W		Meridian	
Lateral/Horizontal - Original Hole, 12/29/2014 11:40:02 AM										Perforations													
MD (ftKB)		D (ft KB)		n (ft KB)		c (ft KB)		l (ft KB)		Vertical schematic (actual)		Logs		Type of Hole		Date		Top (ftKB)		Btm (ftKB)		Zone	
														Perforated Liner		9/28/2014		10,990.0		10,992.0		Niobrara, Original Hole	
														Perforated Liner		9/28/2014		11,060.0		11,062.0		Niobrara, Original Hole	
														Perforated Liner		9/28/2014		11,114.0		11,116.0		Niobrara, Original Hole	
														Perforated Liner		9/28/2014		11,170.0		11,172.0		Niobrara, Original Hole	
														Perforated Liner		9/28/2014		11,239.0		11,241.0		Niobrara, Original Hole	
														Perforated Liner		9/28/2014		11,301.0		11,303.0		Niobrara, Original Hole	
1,935.0		1,935.0		3.5										Perforated Liner		9/28/2014		11,340.0		11,342.0		Niobrara, Original Hole	
3,980.6		3,980.6		9.9										Perforated Liner		9/27/2014		11,426.0		11,428.0		Niobrara, Original Hole	
4,744.8		4,744.8		1.1										Perforated Liner		9/27/2014		11,491.0		11,493.0		Niobrara, Original Hole	
4,886.2		4,886.2		0.9										Perforated Liner		9/27/2014		11,550.0		11,552.0		Niobrara, Original Hole	
4,969.5		4,969.5		7.8										Perforated Liner		9/27/2014		11,630.0		11,632.0		Niobrara, Original Hole	
5,940.6		5,940.6		99.0										Perforated Liner		9/27/2014		11,675.0		11,677.0		Niobrara, Original Hole	
6,008.9		6,008.9		99.0										Perforated Liner		9/27/2014		11,737.0		11,739.0		Niobrara, Original Hole	
6,195.9		6,195.9		99.0										Perforated Liner		9/27/2014		11,800.0		11,802.0		Niobrara, Original Hole	
6,386.2		6,386.2		99.0										Perforated Liner		9/27/2014		11,862.0		11,864.0		Niobrara, Original Hole	
6,569.9		6,569.9		99.0										Perforated Liner		9/27/2014		11,910.0		11,912.0		Niobrara, Original Hole	
6,755.9		6,755.9		99.0										Perforated Liner		9/27/2014		11,986.0		11,988.0		Niobrara, Original Hole	
6,942.9		6,942.9		99.0										Perforated Liner		9/27/2014		12,040.0		12,042.0		Niobrara, Original Hole	
7,128.6		7,128.6		99.0										Perforated Liner		9/27/2014		12,080.0		12,082.0		Niobrara, Original Hole	
7,315.0		7,315.0		99.0										Perforated Liner		9/26/2014		12,168.0		12,170.0		Niobrara, Original Hole	
7,502.0		7,502.0		99.0										Perforated Liner		9/26/2014		12,236.0		12,238.0		Niobrara, Original Hole	
7,691.9		7,691.9		99.0										Perforated Liner		9/26/2014		12,298.0		12,300.0		Niobrara, Original Hole	
7,876.0		7,876.0		99.0										Perforated Liner		9/26/2014		12,360.0		12,362.0		Niobrara, Original Hole	
8,062.0		8,062.0		99.0										Perforated Liner		9/26/2014		12,422.0		12,424.0		Niobrara, Original Hole	
8,254.9		8,254.9		99.0										Perforated Liner		9/26/2014		12,480.0		12,482.0		Niobrara, Original Hole	
8,436.0		8,436.0		99.0										Perforated Liner		9/26/2014		12,547.0		12,549.0		Niobrara, Original Hole	
8,623.0		8,623.0		99.0										Perforated Liner		9/26/2014		12,609.0		12,611.0		Niobrara, Original Hole	
8,810.0		8,810.0		99.0										Perforated Liner		9/26/2014		12,672.0		12,674.0		Niobrara, Original Hole	
8,997.0		8,997.0		99.0										Perforated Liner		9/26/2014		12,734.0		12,736.0		Niobrara, Original Hole	
9,184.1		9,184.1		99.0										Perforated Liner		9/26/2014		12,796.0		12,798.0		Niobrara, Original Hole	
9,370.1		9,370.1		99.0										Perforated Liner		9/26/2014		12,858.0		12,860.0		Niobrara, Original Hole	
9,557.1		9,557.1		99.0										Perforated Liner		9/26/2014		12,930.0		12,932.0		Niobrara, Original Hole	
9,759.8		9,759.8		99.0										Perforated Liner		9/26/2014		12,983.0		12,985.0		Niobrara, Original Hole	
9,933.1		9,933.1		99.0										Perforated Liner		9/26/2014		13,040.0		13,042.0		Niobrara, Original Hole	
10,120.1		10,120.1		99.0										Perforated Liner		9/26/2014		13,108.0		13,110.0		Niobrara, Original Hole	
10,319.9		10,319.9		99.0										Perforated Liner		9/26/2014		13,170.0		13,172.0		Niobrara, Original Hole	
10,494.1		10,494.1		99.0										Perforated Liner		9/26/2014		13,232.0		13,234.0		Niobrara, Original Hole	
10,680.1		10,680.1		99.0										Perforated Liner		9/25/2014		13,294.0		13,296.0		Niobrara, Original Hole	
10,886.2		10,886.2		99.0										Perforated Liner		9/25/2014		13,357.0		13,359.0		Niobrara, Original Hole	
11,062.0		11,062.0		99.0										Perforated Liner		9/25/2014		13,419.0		13,421.0		Niobrara, Original Hole	
11,241.1		11,241.1		99.0										Perforated Liner		9/25/2014		13,419.0		13,421.0		Niobrara, Original Hole	
11,428.1		11,428.1		99.0										Perforated Liner		9/25/2014		13,419.0		13,421.0		Niobrara, Original Hole	
11,631.9		11,631.9		99.0										Perforated Liner		9/25/2014		13,419.0		13,421.0		Niobrara, Original Hole	
11,801.8		11,801.8		99.0										Perforated Liner		9/25/2014		13,419.0		13,421.0		Niobrara, Original Hole	
11,987.9		11,987.9		99.0										Perforated Liner		9/25/2014		13,419.0		13,421.0		Niobrara, Original Hole	
12,169.9		12,169.9		99.0										Perforated Liner		9/25/2014		13,419.0		13,421.0		Niobrara, Original Hole	
12,361.9		12,361.9		99.0										Perforated Liner		9/25/2014		13,419.0		13,421.0		Niobrara, Original Hole	
12,548.9		12,548.9		99.0										Perforated Liner		9/25/2014		13,419.0		13,421.0		Niobrara, Original Hole	
12,735.9		12,735.9		99.0										Perforated Liner		9/25/2014		13,419.0		13,421.0		Niobrara, Original Hole	
12,932.1		12,932.1		99.0										Perforated Liner		9/25/2014		13,419.0		13,421.0		Niobrara, Original Hole	
13,109.9		13,109.9		99.0										Perforated Liner		9/25/2014		13,419.0		13,421.0		Niobrara, Original Hole	
13,295.9		13,295.9		99.0										Perforated Liner		9/25/2014		13,419.0		13,421.0		Niobrara, Original Hole	
13,457.7		13,457.7		99.0										Perforated Liner		9/25/2014		13,419.0		13,421.0		Niobrara, Original Hole	
13,604.0		13,604.0		99.0										Perforated Liner		9/25/2014		13,419.0		13,421.0		Niobrara, Original Hole	
										Sand Frac on 9/25/2014 06:00													
										Comment													
										Treatment End Date:10/2/2014; Number of staged intervals: 40;													
										Total 15% HCl used: 802 bbl; Min frac gradient: 0.824 psi/ft;													
										Number of perfs: 1440; 78010 bbl ClearStar XL Gel, 12367 bbl													
										ClearStar Linear Gel, 28587 bbl Slickwater													
										Min Top De... 6,007.0													
										Max Btm D... 13,421.0													
										Frac Length (ft)													
										Stim/Treat Fluids													
										ClearStar XL Gel; Linear Gel; 15% HCl, <fluidtyp>													
										Proppant Frm (lb)													
										Total Clean Vol...													
										Avg Treat Rate...													
										Max Treat Rate...													
										Avg Treat Press...													
										P Max (psi)													
										Frac Gradient (p...													
										6,177,759.7													
										119766.50													
										48.60													
										58.30													
										5,336.0													
										7,845.0													
										0.83													
										Stim/Treat Stages													
										Stg #													
										Start Date													
										Top Depth (ftKB)													
										Bottom Depth (ftKB)													
										Vol Clean Pump (bbl)													
										Vol Slurry (bbl)													
										1													
										9/25/2014													
										13,294.0													
										13,421.0													
										3310.60													
										3423.00													
										Additive													
										Type													
										Amount													
										Units													
										Sand Size													
										Proppant													
										20/40 WS													
										101,719.4													
										lb													
										20/40													
										Additive													
										Type													
										Amount													
										Units													
										Sand Size													
										Proppant													
										40/70 WS													
										2,723.5													
										lb													
										40/70													
										Stg #													
										Start Date													
										Top Depth (ftKB)													
										Bottom Depth (ftKB)													
										Vol Clean Pump (bbl)													
										Vol Slurry (bbl)													
										2													
										9/25/2014													
										13,108.0													
										13,234.0													
										2847.10													
										2957.50													
										Additive													
										Type													
										Amount													
										Units													
										Sand Size													
										Proppant													
										20/40 WS													
										99,532.8													
										lb													
										20/40													
										Additive													
										Type													
										Amount													
										Units													
										Sand Size													
										Proppant													
										40/70 WS													
										3,004.0													
										lb													
										40/70													
										Stg #													
										Start Date													
										Top Depth (ftKB)													
										Bottom Depth (ftKB)													
										Vol Clean Pump (bbl)													
										Vol Slurry (bbl)													
										3													
										9/26/2014													
										12,930.0													
										13,042.0													
										2796.30													
										2908.60													
										Additive													
										Type													
										Amount													
										Units													
										Sand Size													
										Proppant													
										20/40 WS													
										101,024.7													
										lb													
										20/40													
										Additive													
										Type													
										Amount													
										Units													
										Sand Size													
										Proppant													
										40/70 WS													
										3,322.5													
										lb													
										40/70													
										Stg #													
										Start Date													
										Top Depth (ftKB)													
										Bottom Depth (ftKB)													
										Vol Clean Pump (bbl)													
										Vol Slurry (bbl)													
										4													
										9/26/2014													
										12,734.0													
										12,860.0													
										3219.00													
										3394.70													
										Additive													
										Type													
										Amount													
										Units													

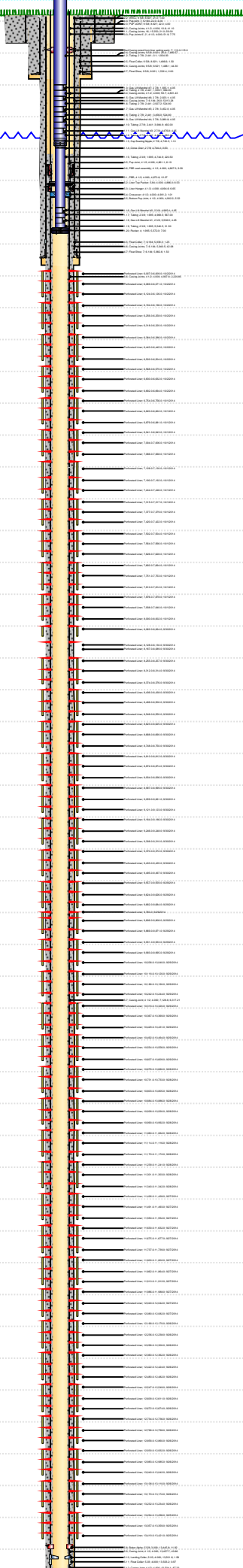


Lease Review
Well Name: RAZOR 26I-2315A

API Number 051233848400		WPC ID 1CO076997		Well Permit Number		Field Name DJ Horizontal Niobrara		County Weld		State CO			
Well Configuration Type Lateral/Horizontal		Orig KB Elv (ft) 4,733.00		Ground Elevation (ft) 4,712.00		Casing Flange Elevation (ft)		Tubing Head Elevation (ft)		Total Depth (ftKB) 13,604.0			
Original Spud Date 6/7/2014		Completion Date 10/2/2014		Asset Group Redtail		Responsible Engineer Charles Ohlson		N/S Dist (ft) 2,242.0		N/S Ref FSL		E/W Dist (ft) 629.0	E/W Ref FEL
Lot		Quarter 1 NE	Quarter 2 SE	Quarter 3	Quarter 4	Section 26	Section Suffix	Section Type	Township 10 N	Township N/S Dir	Range 58 W	Meridian	
Lateral/Horizontal - Original Hole, 12/29/2014 11:40:03 AM						Additive Proppant		Type 40/70 WS		Amount 3,089.1	Units lb	Sand Size 40/70	
MD (ftKB)	D (ft KB)	n (ft KB)	c (ft KB)	l (ft KB)	Vertical schematic (actual)	Logs	Stg #	Start Date		Top Depth (ftKB)	Bottom Depth (ftKB)	Vol Clean Pump (bbl)	Vol Slurry (bbl)
							6	9/26/2014		12,360.0	12,482.0	3117.20	3282.10
22.0	22.0	0.0					Additive Proppant	Type 20/40 WS		Amount 150,201.0	Units lb	Sand Size 20/40	
							Additive Proppant	Type 40/70 WS		Amount 3,001.7	Units lb	Sand Size 40/70	
115.2	115.2	0.1					Stg #	Start Date		Top Depth (ftKB)	Bottom Depth (ftKB)	Vol Clean Pump (bbl)	Vol Slurry (bbl)
							7	9/26/2014		12,168.0	12,300.0	3124.40	3298.40
1,935.0	1,935.0	3.5					Additive Proppant	Type 20/40 WS		Amount 158,455.6	Units lb	Sand Size 20/40	
							Additive Proppant	Type 40/70 WS		Amount 3,206.3	Units lb	Sand Size 40/70	
3,980.6	3,980.6	7.9					Stg #	Start Date		Top Depth (ftKB)	Bottom Depth (ftKB)	Vol Clean Pump (bbl)	Vol Slurry (bbl)
							8	9/26/2014		11,986.0	12,082.0	3149.70	3326.90
4,744.8	4,744.8	1.1					Additive Proppant	Type 20/40 WS		Amount 161,288.5	Units lb	Sand Size 20/40	
							Additive Proppant	Type 40/70 WS		Amount 3,348.9	Units lb	Sand Size 40/70	
4,886.2	4,886.2	0.9					Stg #	Start Date		Top Depth (ftKB)	Bottom Depth (ftKB)	Vol Clean Pump (bbl)	Vol Slurry (bbl)
							9	9/27/2014		11,800.0	11,912.0	3642.20	3820.90
4,969.5	4,969.5	7.8					Additive Proppant	Type 20/40 WS		Amount 162,215.3	Units lb	Sand Size 20/40	
							Additive Proppant	Type 40/70 WS		Amount 3,745.5	Units lb	Sand Size 40/70	
5,940.6	5,940.6	94.0					Stg #	Start Date		Top Depth (ftKB)	Bottom Depth (ftKB)	Vol Clean Pump (bbl)	Vol Slurry (bbl)
							10	9/27/2014		11,630.0	11,739.0	3478.90	3650.40
6,008.9	6,008.9	90.0					Additive Proppant	Type 20/40 WS		Amount 155,576.4	Units lb	Sand Size 20/40	
							Additive Proppant	Type 40/70 WS		Amount 3,752.4	Units lb	Sand Size 40/70	
6,195.9	6,195.9	90.0					Stg #	Start Date		Top Depth (ftKB)	Bottom Depth (ftKB)	Vol Clean Pump (bbl)	Vol Slurry (bbl)
							11	9/27/2014		11,426.0	11,552.0	3045.40	3217.50
6,386.2	6,386.2	90.0					Additive Proppant	Type 20/40 WS		Amount 156,898.2	Units lb	Sand Size 20/40	
							Additive Proppant	Type 40/70 WS		Amount 2,940.8	Units lb	Sand Size 40/70	
6,569.9	6,569.9	90.0					Stg #	Start Date		Top Depth (ftKB)	Bottom Depth (ftKB)	Vol Clean Pump (bbl)	Vol Slurry (bbl)
							12	9/28/2014		11,239.0	11,342.0	3064.50	3235.40
6,755.9	6,755.9	90.0					Additive Proppant	Type 20/40 WS		Amount 155,774.3	Units lb	Sand Size 20/40	
							Additive Proppant	Type 40/70 WS		Amount 3,000.6	Units lb	Sand Size 40/70	
6,942.9	6,942.9	90.0					Stg #	Start Date		Top Depth (ftKB)	Bottom Depth (ftKB)	Vol Clean Pump (bbl)	Vol Slurry (bbl)
							13	9/28/2014		11,060.0	11,172.0	3098.60	3272.70
7,128.6	7,128.6	90.0					Additive Proppant	Type 20/40 WS		Amount 158,650.4	Units lb	Sand Size 20/40	
							Additive Proppant	Type 40/70 WS		Amount 3,094.8	Units lb	Sand Size 40/70	
7,315.0	7,315.0	90.0					Stg #	Start Date		Top Depth (ftKB)	Bottom Depth (ftKB)	Vol Clean Pump (bbl)	Vol Slurry (bbl)
							14	9/28/2014		10,884.0	10,992.0	2964.20	3110.00
7,502.0	7,502.0	90.0					Additive Proppant	Type 20/40 WS		Amount 132,067.2	Units lb	Sand Size 20/40	
							Additive Proppant	Type 40/70 WS		Amount 3,314.4	Units lb	Sand Size 40/70	
7,691.9	7,691.9	90.0					Stg #	Start Date		Top Depth (ftKB)	Bottom Depth (ftKB)	Vol Clean Pump (bbl)	Vol Slurry (bbl)
							15	9/28/2014		10,678.0	10,805.0	3102.30	3276.30
7,876.0	7,876.0	90.0					Additive Proppant	Type 20/40 WS		Amount 158,571.1	Units lb	Sand Size 20/40	
							Additive Proppant	Type 40/70 WS		Amount 3,092.5	Units lb	Sand Size 40/70	
8,062.0	8,062.0	90.0					Stg #	Start Date		Top Depth (ftKB)	Bottom Depth (ftKB)	Vol Clean Pump (bbl)	Vol Slurry (bbl)
							16	9/28/2014		10,492.0	10,609.0	3116.30	3292.80
8,254.9	8,254.9	90.0					Additive Proppant	Type 20/40 WS		Amount 160,366.5	Units lb	Sand Size 20/40	
							Additive Proppant	Type 40/70 WS		Amount 3,604.1	Units lb	Sand Size 40/70	
8,436.0	8,436.0	90.0					Stg #	Start Date		Top Depth (ftKB)	Bottom Depth (ftKB)	Vol Clean Pump (bbl)	Vol Slurry (bbl)
							17	9/29/2014		10,318.0	10,431.0	2986.60	3156.20
8,623.0	8,623.0	90.0					Additive Proppant	Type 20/40 WS		Amount 154,521.7	Units lb	Sand Size 20/40	
							Additive Proppant	Type 40/70 WS		Amount 3,027.0	Units lb	Sand Size 40/70	
8,810.0	8,810.0	90.0					Stg #	Start Date		Top Depth (ftKB)	Bottom Depth (ftKB)	Vol Clean Pump (bbl)	Vol Slurry (bbl)
							18	9/29/2014		10,118.0	10,244.0	2991.00	3160.90
8,997.0	8,997.0	90.0					Additive Proppant	Type 20/40 WS		Amount 154,682.6	Units lb	Sand Size 20/40	
							Additive Proppant	Type 40/70 WS		Amount 3,097.1	Units lb	Sand Size 40/70	
9,184.1	9,184.1	90.0					Stg #	Start Date		Top Depth (ftKB)	Bottom Depth (ftKB)	Vol Clean Pump (bbl)	Vol Slurry (bbl)
							19	9/29/2014		9,931.0	10,040.0	2845.90	3015.20
9,370.1	9,370.1	90.0					Additive Proppant	Type 20/40 WS		Amount 154,112.6	Units lb	Sand Size 20/40	
							Additive Proppant	Type 40/70 WS		Amount 3,186.8	Units lb	Sand Size 40/70	
9,557.1	9,557.1	90.0					Stg #	Start Date		Top Depth (ftKB)	Bottom Depth (ftKB)	Vol Clean Pump (bbl)	Vol Slurry (bbl)
							20	9/29/2014		9,760.0	9,871.0	2954.90	3126.50
9,759.8	9,759.8	90.0					Additive Proppant	Type 20/40 WS		Amount 156,068.9	Units lb	Sand Size 20/40	
							Additive Proppant	Type 40/70 WS		Amount 3,312.1	Units lb	Sand Size 40/70	
9,933.1	9,933.1	90.0					Stg #	Start Date		Top Depth (ftKB)	Bottom Depth (ftKB)	Vol Clean Pump (bbl)	Vol Slurry (bbl)
							21	9/29/2014		9,557.0	9,684.0	2967.60	3137.60
10,120.1	10,120.1	90.0					Additive Proppant	Type 20/40 WS		Amount 154,568.1	Units lb	Sand Size 20/40	
							Additive Proppant	Type 40/70 WS		Amount 154,568.1	Units lb	Sand Size 20/40	
10,319.9	10,319.9	90.0					Stg #	Start Date		Top Depth (ftKB)	Bottom Depth (ftKB)	Vol Clean Pump (bbl)	Vol Slurry (bbl)
							21	9/29/2014		9,557.0	9,684.0	2967.60	3137.60
10,494.1	10,494.1	90.0					Additive Proppant	Type 20/40 WS		Amount 154,568.1	Units lb	Sand Size 20/40	
							Additive Proppant	Type 40/70 WS		Amount 154,568.1	Units lb	Sand Size 20/40	
10,680.1	10,680.1	90.0					Stg #	Start Date		Top Depth (ftKB)	Bottom Depth (ftKB)	Vol Clean Pump (bbl)	Vol Slurry (bbl)
							21	9/29/2014		9,557.0	9,684.0	2967.60	3137.60
10,886.2	10,886.2	90.0					Additive Proppant	Type 20/40 WS		Amount 154,568.1	Units lb	Sand Size 20/40	
							Additive Proppant	Type 40/70 WS		Amount 154,568.1	Units lb	Sand Size 20/40	
11,062.0	11,062.0	90.0					Stg #	Start Date		Top Depth (ftKB)	Bottom Depth (ftKB)	Vol Clean Pump (bbl)	Vol Slurry (bbl)
							21	9/29/2014		9,557.0	9,684.0	2967.60	3137.60
11,241.1	11,241.1	90.0					Additive Proppant	Type 20/40 WS		Amount 154,568.1	Units lb	Sand Size 20/40	
							Additive Proppant	Type 40/70 WS		Amount 154,568.1	Units lb	Sand Size 20/40	
11,428.1	11,428.1	90.0					Stg #	Start Date		Top Depth (ftKB)	Bottom Depth (ftKB)	Vol Clean Pump (bbl)	Vol Slurry (bbl)
							21	9/29/2014		9,557.0	9,684.0	2967.60	3137.60
11,631.9	11,631.9	90.0					Additive Proppant	Type 20/40 WS		Amount 154,568.1	Units lb	Sand Size 20/40	
							Additive Proppant	Type 40/70 WS		Amount 154,568.1	Units lb	Sand Size 20/40	
11,801.8	11,801.8	90.0					Stg #	Start Date		Top Depth (ftKB)	Bottom Depth (ftKB)	Vol Clean Pump (bbl)	Vol Slurry (bbl)
							21	9/29/2014		9,557.0	9,684.0	2967.60	3137.60
11,987.9	11,987.9	90.0					Additive Proppant	Type 20/40 WS		Amount 154,568.1	Units lb	Sand Size 20/40	
							Additive Proppant	Type 40/70 WS		Amount 154,568.1	Units lb	Sand Size 20/40	
12,169.9	12,169.9	90.0					Stg #	Start Date		Top Depth (ftKB)	Bottom Depth (ftKB)	Vol Clean Pump (bbl)	Vol Slurry (bbl)
							21	9/29/2014		9,557.0	9,684.0	2967.60	3137.60
12,361.9	12,361.9	90.0					Additive Proppant	Type 20/40 WS		Amount 154,568.1	Units lb	Sand Size 20/40	
							Additive Proppant	Type 40/70 WS		Amount 154,568.1	Units lb	Sand Size 20/40	
12,548.9	12,548.9	90.0					Stg #	Start Date		Top Depth (ftKB)	Bottom Depth (ftKB)	Vol Clean Pump (bbl)	Vol Slurry (bbl)
							21	9/29/2014		9,557.0	9,684.0	2967.60	3137.60
12,735.9	12,735.9	90.0					Additive Proppant	Type 20/40 WS		Amount 154,568.1	Units lb	Sand Size 20/40	
							Additive Proppant	Type 40/70 WS		Amount 154,568.1	Units lb	Sand Size 20/40	
12,932.1	12,932.1	90.0					Stg #	Start Date		Top Depth (ftKB)	Bottom Depth (ftKB)	Vol Clean Pump (bbl)	Vol Slurry (bbl)
							21	9/29/2014		9,557.0	9,684.0	2967.60	3137.60
13,109.9	13,109.9	90.0					Additive Proppant	Type 20/40 WS		Amount 154,568.1	Units lb	Sand Size 20/40	
							Additive Proppant	Type 40/70 WS		Amount 154,568.1	Units lb	Sand Size 20/40	
13,295.9	13,295.9	90.0					Stg #	Start Date		Top Depth (ftKB)	Bottom Depth (ftKB)	Vol Clean Pump (bbl)	Vol Slurry (bbl)
							21	9/29/2014		9,557.0	9,684.0	2967.60	3137.60
13,457.7	13,457.7	90.0					Additive Proppant	Type 20/40 WS		Amount 154,568.1	Units lb	Sand Size 20/40	
							Additive Proppant	Type 40/70 WS		Amount 154,568.1	Units lb	Sand Size 20/40	
13,604.0	13,604.0	90.0					Stg #	Start Date		Top Depth (ftKB)	Bottom Depth (ftKB)	Vol Clean Pump (bbl)	Vol Slurry (bbl)
							21	9/29/2014		9,557.0	9,684.0	2967.60	3137.60



Lease Review
Well Name: RAZOR 26I-2315A

API Number 051233848400		WPC ID 1CO076997		Well Permit Number		Field Name DJ Horizontal Niobrara		County Weld		State CO			
Well Configuration Type Lateral/Horizontal		Orig KB Elv (ft) 4,733.00		Ground Elevation (ft) 4,712.00		Casing Flange Elevation (ft)		Tubing Head Elevation (ft)		Total Depth (ftKB) 13,604.0			
Original Spud Date 6/7/2014		Completion Date 10/2/2014		Asset Group Redtail		Responsible Engineer Charles Ohlson		N/S Dist (ft) 2,242.0		N/S Ref FSL		E/W Dist (ft) 629.0	E/W Ref FEL
Lot		Quarter 1 NE	Quarter 2 SE	Quarter 3	Quarter 4	Section 26	Section Suffix	Section Type	Township 10 N	Township N/S Dir	Range 58 W	Range E/W Dir	Meridian
Lateral/Horizontal - Original Hole, 12/29/2014 11:40:05 AM						Additive Proppant		Type 40/70 WS		Amount 3,300.6		Units lb	Sand Size 40/70
MD (ftKB)	D (ft KB)	n (ft)	c (ft)	l (ft)	Vertical schematic (actual)	Logs	Stg #	Start Date	Top Depth (ftKB)	Bottom Depth (ftKB)	Vol Clean Pump (bbl)	Vol Slurry (bbl)	
							22	9/29/2014	9,370.0	9,497.0	2870.80	3043.80	
22.0	22.0	0.0					Additive Proppant	Type 20/40 WS		Amount 157,357.8		Units lb	Sand Size 20/40
							Additive Proppant	Type 40/70 WS		Amount 3,333.9		Units lb	Sand Size 40/70
115.2	115.2	0.1					Stg #	Start Date	Top Depth (ftKB)	Bottom Depth (ftKB)	Vol Clean Pump (bbl)	Vol Slurry (bbl)	
							23	9/30/2014	9,184.0	9,310.0	2883.50	3056.80	
1,935.0	1,935.0	3.5					Additive Proppant	Type 20/40 WS		Amount 157,563.8		Units lb	Sand Size 20/40
							Additive Proppant	Type 40/70 WS		Amount 3,421.3		Units lb	Sand Size 40/70
3,980.6	3,980.6	7.9					Stg #	Start Date	Top Depth (ftKB)	Bottom Depth (ftKB)	Vol Clean Pump (bbl)	Vol Slurry (bbl)	
							24	9/30/2014	8,997.0	9,123.0	2883.40	3053.60	
4,744.8	4,744.8	1.1					Additive Proppant	Type 20/40 WS		Amount 154,651.5		Units lb	Sand Size 20/40
							Additive Proppant	Type 40/70 WS		Amount 3,450.1		Units lb	Sand Size 40/70
4,886.2	4,886.2	0.9					Stg #	Start Date	Top Depth (ftKB)	Bottom Depth (ftKB)	Vol Clean Pump (bbl)	Vol Slurry (bbl)	
							25	9/30/2014	8,810.0	8,936.0	2982.00	3156.80	
4,969.5	4,969.5	7.5					Additive Proppant	Type 20/40 WS		Amount 159,052.7		Units lb	Sand Size 20/40
							Additive Proppant	Type 40/70 WS		Amount 3,335.1		Units lb	Sand Size 40/70
5,940.6	5,940.6	94.0					Stg #	Start Date	Top Depth (ftKB)	Bottom Depth (ftKB)	Vol Clean Pump (bbl)	Vol Slurry (bbl)	
							26	9/30/2014	8,623.0	8,750.0	2841.10	3010.90	
6,008.9	6,008.9	90.0					Additive Proppant	Type 20/40 WS		Amount 154,557.0		Units lb	Sand Size 20/40
							Additive Proppant	Type 40/70 WS		Amount 3,205.2		Units lb	Sand Size 40/70
6,195.9	6,195.9	90.0					Stg #	Start Date	Top Depth (ftKB)	Bottom Depth (ftKB)	Vol Clean Pump (bbl)	Vol Slurry (bbl)	
							27	9/30/2014	8,436.0	8,550.0	2810.00	2979.80	
6,386.2	6,386.2	90.0					Additive Proppant	Type 20/40 WS		Amount 154,438.3		Units lb	Sand Size 20/40
							Additive Proppant	Type 40/70 WS		Amount 3,296.0		Units lb	Sand Size 40/70
6,569.9	6,569.9	90.0					Stg #	Start Date	Top Depth (ftKB)	Bottom Depth (ftKB)	Vol Clean Pump (bbl)	Vol Slurry (bbl)	
							28	9/30/2014	8,255.0	8,376.0	2914.60	3083.30	
6,755.9	6,755.9	90.0					Additive Proppant	Type 20/40 WS		Amount 153,361.7		Units lb	Sand Size 20/40
							Additive Proppant	Type 40/70 WS		Amount 3,346.6		Units lb	Sand Size 40/70
6,942.9	6,942.9	90.0					Stg #	Start Date	Top Depth (ftKB)	Bottom Depth (ftKB)	Vol Clean Pump (bbl)	Vol Slurry (bbl)	
							29	9/30/2014	8,062.0	8,089.0	2862.20	3033.70	
7,128.6	7,128.6	90.0					Additive Proppant	Type 20/40 WS		Amount 155,854.8		Units lb	Sand Size 20/40
							Additive Proppant	Type 40/70 WS		Amount 3,396.0		Units lb	Sand Size 40/70
7,315.0	7,315.0	90.0					Stg #	Start Date	Top Depth (ftKB)	Bottom Depth (ftKB)	Vol Clean Pump (bbl)	Vol Slurry (bbl)	
							30	9/30/2014	7,876.0	8,002.0	2792.00	2939.50	
7,502.0	7,502.0	90.0					Additive Proppant	Type 20/40 WS		Amount 134,371.5		Units lb	Sand Size 20/40
							Additive Proppant	Type 40/70 WS		Amount 2,597.0		Units lb	Sand Size 40/70
7,691.9	7,691.9	90.0					Stg #	Start Date	Top Depth (ftKB)	Bottom Depth (ftKB)	Vol Clean Pump (bbl)	Vol Slurry (bbl)	
							31	9/30/2014	7,876.0	8,002.0	2792.00	2939.50	
7,876.0	7,876.0	90.0					Additive Proppant	Type 20/40 WS		Amount 157,746.7		Units lb	Sand Size 20/40
							Additive Proppant	Type 40/70 WS		Amount 3,283.4		Units lb	Sand Size 40/70
8,062.0	8,062.0	90.0					Stg #	Start Date	Top Depth (ftKB)	Bottom Depth (ftKB)	Vol Clean Pump (bbl)	Vol Slurry (bbl)	
							32	10/1/2014	7,692.0	7,812.0	2862.40	3035.80	
8,254.9	8,254.9	90.0					Additive Proppant	Type 20/40 WS		Amount 157,194.8		Units lb	Sand Size 20/40
							Additive Proppant	Type 40/70 WS		Amount 3,283.4		Units lb	Sand Size 40/70
8,436.0	8,436.0	90.0					Stg #	Start Date	Top Depth (ftKB)	Bottom Depth (ftKB)	Vol Clean Pump (bbl)	Vol Slurry (bbl)	
							33	10/1/2014	7,692.0	7,812.0	2862.40	3035.80	
8,623.0	8,623.0	90.0					Additive Proppant	Type 20/40 WS		Amount 157,746.7		Units lb	Sand Size 20/40
							Additive Proppant	Type 40/70 WS		Amount 3,283.4		Units lb	Sand Size 40/70
8,810.0	8,810.0	90.0					Stg #	Start Date	Top Depth (ftKB)	Bottom Depth (ftKB)	Vol Clean Pump (bbl)	Vol Slurry (bbl)	
							34	10/1/2014	7,502.0	7,628.0	2842.60	3015.40	
8,997.0	8,997.0	90.0					Additive Proppant	Type 20/40 WS		Amount 157,194.8		Units lb	Sand Size 20/40
							Additive Proppant	Type 40/70 WS		Amount 3,292.6		Units lb	Sand Size 40/70
9,184.1	9,184.1	90.0					Stg #	Start Date	Top Depth (ftKB)	Bottom Depth (ftKB)	Vol Clean Pump (bbl)	Vol Slurry (bbl)	
							35	10/1/2014	7,315.0	7,422.0	2866.30	3037.50	
9,370.1	9,370.1	90.0					Additive Proppant	Type 20/40 WS		Amount 155,738.1		Units lb	Sand Size 20/40
							Additive Proppant	Type 40/70 WS		Amount 3,246.6		Units lb	Sand Size 40/70
9,557.1	9,557.1	90.0					Stg #	Start Date	Top Depth (ftKB)	Bottom Depth (ftKB)	Vol Clean Pump (bbl)	Vol Slurry (bbl)	
							36	10/1/2014	7,128.0	7,246.0	2903.70	3079.00	
9,759.8	9,759.8	90.0					Additive Proppant	Type 20/40 WS		Amount 159,421.6		Units lb	Sand Size 20/40
							Additive Proppant	Type 40/70 WS		Amount 3,443.2		Units lb	Sand Size 40/70
9,933.1	9,933.1	90.0					Stg #	Start Date	Top Depth (ftKB)	Bottom Depth (ftKB)	Vol Clean Pump (bbl)	Vol Slurry (bbl)	
							37	10/1/2014	6,941.0	7,068.0	3225.30	3394.60	
10,120.1	10,120.1	90.0					Additive Proppant	Type 20/40 WS		Amount 154,329.6		Units lb	Sand Size 20/40
							Additive Proppant	Type 40/70 WS		Amount 2,933.9		Units lb	Sand Size 40/70
10,319.9	10,319.9	90.0					Stg #	Start Date	Top Depth (ftKB)	Bottom Depth (ftKB)	Vol Clean Pump (bbl)	Vol Slurry (bbl)	
							38	10/1/2014	6,754.0	6,881.0	2868.70	3037.90	
10,494.1	10,494.1	90.0					Additive Proppant	Type 20/40 WS		Amount 154,960.0		Units lb	Sand Size 20/40
							Additive Proppant	Type 40/70 WS		Amount 2,161.3		Units lb	Sand Size 40/70
10,680.1	10,680.1	90.0					Stg #	Start Date	Top Depth (ftKB)	Bottom Depth (ftKB)	Vol Clean Pump (bbl)	Vol Slurry (bbl)	
							39	10/1/2014	6,568.0	6,694.0	2883.50	3054.80	
10,886.2	10,886.2	90.0					Additive Proppant	Type 20/40 WS		Amount 156,142.3		Units lb	Sand Size 20/40
							Additive Proppant	Type 40/70 WS		Amount 156,142.3		Units lb	Sand Size 20/40
11,062.0	11,062.0	90.0					Stg #	Start Date	Top Depth (ftKB)	Bottom Depth (ftKB)	Vol Clean Pump (bbl)	Vol Slurry (bbl)	
							40	10/1/2014	6,568.0	6,694.0	2883.50	3054.80	
11,241.1	11,241.1	90.0					Additive Proppant	Type 20/40 WS		Amount 156,142.3		Units lb	Sand Size 20/40
							Additive Proppant	Type 40/70 WS		Amount 156,142.3		Units lb	Sand Size 20/40
11,428.1	11,428.1	90.0					Stg #	Start Date	Top Depth (ftKB)	Bottom Depth (ftKB)	Vol Clean Pump (bbl)	Vol Slurry (bbl)	
							41	10/1/2014	6,568.0	6,694.0	2883.50	3054.80	
11,631.9	11,631.9	90.0					Additive Proppant	Type 20/40 WS		Amount 156,142.3		Units lb	Sand Size 20/40
							Additive Proppant	Type 40/70 WS		Amount 156,142.3		Units lb	Sand Size 20/40
11,801.8	11,801.8	90.0					Stg #	Start Date	Top Depth (ftKB)	Bottom Depth (ftKB)	Vol Clean Pump (bbl)	Vol Slurry (bbl)	
							42	10/1/2014	6,568.0	6,694.0	2883.50	3054.80	
11,987.9	11,987.9	90.0					Additive Proppant	Type 20/40 WS		Amount 156,142.3		Units lb	Sand Size 20/40
							Additive Proppant	Type 40/70 WS		Amount 156,142.3		Units lb	Sand Size 20/40
12,169.9	12,169.9	90.0					Stg #	Start Date	Top Depth (ftKB)	Bottom Depth (ftKB)	Vol Clean Pump (bbl)	Vol Slurry (bbl)	
							43	10/1/2014	6,568.0	6,694.0	2883.50	3054.80	
12,361.9	12,361.9	90.0					Additive Proppant	Type 20/40 WS		Amount 156,142.3		Units lb	Sand Size 20/40
							Additive Proppant	Type 40/70 WS		Amount 156,142.3		Units lb	Sand Size 20/40
12,548.9	12,548.9	90.0					Stg #	Start Date	Top Depth (ftKB)	Bottom Depth (ftKB)	Vol Clean Pump (bbl)	Vol Slurry (bbl)	
							44	10/1/2014	6,568.0	6,694.0	2883.50	3054.80	
12,735.9	12,735.9	90.0					Additive Proppant	Type 20/40 WS		Amount 156,142.3		Units lb	Sand Size 20/40
							Additive Proppant	Type 40/70 WS		Amount 156,142.3		Units lb	Sand Size 20/40
12,932.1	12,932.1	90.0					Stg #	Start Date	Top Depth (ftKB)	Bottom Depth (ftKB)	Vol Clean Pump (bbl)	Vol Slurry (bbl)	
							45	10/1/2014	6,568.0	6,694.0	2883.50	3054.80	
13,109.9	13,109.9	90.0					Additive Proppant	Type 20/40 WS		Amount 156,142.3		Units lb	Sand Size 20/40
							Additive Proppant	Type 40/70 WS		Amount 156,142.3		Units lb	Sand Size 20/40
13,295.9	13,295.9	90.0					Stg #	Start Date	Top Depth (ftKB)	Bottom Depth (ftKB)	Vol Clean Pump (bbl)	Vol Slurry (bbl)	
							46	10/1/2014	6,568.0	6,694.0	2883.50	3054.80	
13,457.7	13,457.7	90.0					Additive Proppant	Type 20/40 WS		Amount 156,142.3		Units lb	Sand Size 20/40
							Additive Proppant	Type 40/70 WS		Amount 156,142.3		Units lb	Sand Size 20/40
13,604.0	13,604.0	90.0					Stg #	Start Date	Top Depth (ftKB)	Bottom Depth (ftKB)	Vol Clean Pump (bbl)	Vol Slurry (bbl)	
							47	10/1/2014	6,568.0	6,694.0	2883.50	3054.80	



Lease Review
Well Name: RAZOR 26I-2315A

API Number 051233848400			WPC ID 1CO076997			Well Permit Number			Field Name DJ Horizontal Niobrara			County Weld			State CO												
Well Configuration Type Lateral/Horizontal			Orig KB Elv (ft) 4,733.00			Ground Elevation (ft) 4,712.00			Casing Flange Elevation (ft)			Tubing Head Elevation (ft)			Total Depth (ftKB) 13,604.0												
Original Spud Date 6/7/2014			Completion Date 10/2/2014			Asset Group Redtail			Responsible Engineer Charles Ohlson			N/S Dist (ft) 2,242.0			N/S Ref FSL			E/W Dist (ft) 629.0			E/W Ref FEL						
Lot		Quarter 1 NE		Quarter 2 SE		Quarter 3		Quarter 4		Section 26		Section Suffix		Section Type		Township 10 N		Township N/S Dir		Range 58 W		Meridian					
Lateral/Horizontal - Original Hole, 12/29/2014 11:40:06 AM																											
MD (ftKB)		D (ft KB)		n (KB)		c (KB)		l (KB)		Vertical schematic (actual)		Logs		Additive Proppant				Type 40/70 WS				Amount 2,943.1		Units lb		Sand Size 40/70	
														Stg # 38		Start Date 10/2/2014		Top Depth (ftKB) 6,384.0		Bottom Depth (ftKB) 6,504.0		Vol Clean Pump (bbl) 2845.60		Vol Slurry (bbl) 3013.30			
														Additive Proppant				Type 20/40 WS				Amount 153,657.3		Units lb		Sand Size 20/40	
														Stg # 39		Start Date 10/2/2014		Top Depth (ftKB) 6,194.0		Bottom Depth (ftKB) 6,320.0		Vol Clean Pump (bbl) 2853.50		Vol Slurry (bbl) 3023.80			
														Additive Proppant				Type 20/40 WS				Amount 155,162.2		Units lb		Sand Size 20/40	
														Stg # 40		Start Date 10/2/2014		Top Depth (ftKB) 6,007.0		Bottom Depth (ftKB) 6,126.0		Vol Clean Pump (bbl) 2840.90		Vol Slurry (bbl) 3020.30			
														Additive Proppant				Type 20/40 WS				Amount 164,120.4		Units lb		Sand Size 20/40	
														Stg # 41		Start Date 10/2/2014		Top Depth (ftKB) 5,812.0		Bottom Depth (ftKB) 5,932.0		Vol Clean Pump (bbl) 2830.00		Vol Slurry (bbl) 3010.00			
														Additive Proppant				Type 40/70 WS				Amount 2,468.3		Units lb		Sand Size 40/70	
														Stg # 42		Start Date 10/2/2014		Top Depth (ftKB) 5,617.0		Bottom Depth (ftKB) 5,737.0		Vol Clean Pump (bbl) 2820.00		Vol Slurry (bbl) 2990.00			
Tubing - Production set at 5,579.0ftKB on 10/25/2014 06:00																											
																				Set Depth (ftKB) 5,579.0		Comment		Run Date 10/25/2014		Pull Date	



Lease Review
Well Name: RAZOR 26I-2315A

API Number 051233848400	WPC ID 1CO076997	Well Permit Number	Field Name DJ Horizontal Niobrara	County Weld	State CO
Well Configuration Type Lateral/Horizontal	Orig KB Elv (ft) 4,733.00	Ground Elevation (ft) 4,712.00	Casing Flange Elevation (ft)	Tubing Head Elevation (ft)	Total Depth (ftKB) 13,604.0
Original Spud Date 6/7/2014	Completion Date 10/2/2014	Asset Group Redtail	Responsible Engineer Charles Ohlson	N/S Dist (ft) 2,242.0	N/S Ref FSL
				E/W Dist (ft) 629.0	E/W Ref FEL
Lot	Quarter 1 NE	Quarter 2 SE	Quarter 3	Quarter 4	Section 26
			Section Suffix	Section Type	Township 10 N
					Range 58 W

Lateral/Horizontal - Original Hole, 12/29/2014 11:40:08 AM					Other In Hole					
MD (ftKB)	D (ft KB)	n c l ()	Vertical schematic (actual)	Logs	Des	OD (in)	Run Date	Pull Date	Top (ftKB)	Btm (ftKB)
22.0	22.0	0.0			CFP	4	9/29/2014	10/21/2014	10,274.0	10,276.0
115.2	115.2	0.1			CFP	4	9/29/2014	10/21/2014	10,460.0	10,462.0
1,935.0	1,935.0	3.5			CFP	4	9/29/2014	10/21/2014	10,640.0	10,642.0
3,980.6	3,979.4	7.9			CFP	4	9/28/2014	10/21/2014	10,840.0	10,842.0
4,744.8	4,742.3	1.1			CFP	4	9/28/2014	10/21/2014	11,021.0	11,023.0
4,886.2	4,883.6	0.9			CFP	4	9/28/2014	10/21/2014	11,200.0	11,202.0
4,969.5	4,966.9	0.8			CFP	4	9/28/2014	10/21/2014	11,376.0	11,378.0
5,940.6	5,938.4	0.9			CFP	4	9/27/2014	10/21/2014	11,582.0	11,584.0
6,008.9	5,999.2	1.0			CFP	4	9/27/2014	10/21/2014	11,768.0	11,770.0
6,195.9	6,188.4	0.9			CFP	4	9/27/2014	10/21/2014	11,940.0	11,942.0
6,386.2	6,377.2	0.8			CFP	4	9/27/2014	10/22/2014	12,116.0	12,118.0
6,569.9	6,561.9	0.8			CFP	4	9/26/2014	10/22/2014	12,329.0	12,331.0
6,755.9	6,747.9	0.8			CFP	4	9/26/2014	10/22/2014	12,510.0	12,512.0
6,942.9	6,934.9	0.8			CFP	4	9/26/2014	10/22/2014	12,686.0	12,688.0
7,128.6	7,120.6	0.8			CFP	4	9/26/2014	10/22/2014	12,890.0	12,892.0
7,315.0	7,307.0	0.8			CFP	4	9/26/2014	10/22/2014	13,070.0	13,072.0
7,502.0	7,494.0	0.8			CFP	4	9/26/2014	10/22/2014	13,255.0	13,257.0
7,691.9	7,683.9	0.8			Bottom Hole Cores					
7,876.0	7,868.0	0.8			Date	Core #	Top (ftKB)	Btm (ftKB)	Recov (ft)	
8,062.0	8,054.0	0.8								
8,254.9	8,246.9	0.8								
8,436.0	8,428.0	0.8								
8,623.0	8,615.0	0.8								
8,810.0	8,802.0	0.8								
8,997.0	8,989.0	0.8								
9,184.1	9,176.1	0.8								
9,370.1	9,362.1	0.8								
9,557.1	9,549.1	0.8								
9,759.8	9,751.8	0.8								
9,933.1	9,925.1	0.8								
10,120.1	10,112.1	0.8								
10,319.9	10,311.9	0.8								
10,494.1	10,486.1	0.8								
10,680.1	10,672.1	0.8								
10,866.2	10,858.2	0.8								
11,062.0	11,054.0	0.8								
11,241.1	11,233.1	0.8								
11,428.1	11,420.1	0.8								
11,631.9	11,623.9	0.8								
11,801.8	11,793.8	0.8								
11,987.9	11,979.9	0.8								
12,169.9	12,161.9	0.8								
12,361.9	12,353.9	0.8								
12,548.9	12,540.9	0.8								
12,735.9	12,727.9	0.8								
12,932.1	12,924.1	0.8								
13,109.9	13,101.9	0.8								
13,295.9	13,287.9	0.8								
13,457.7	13,449.7	0.8								
13,604.0	13,596.0	0.7								