

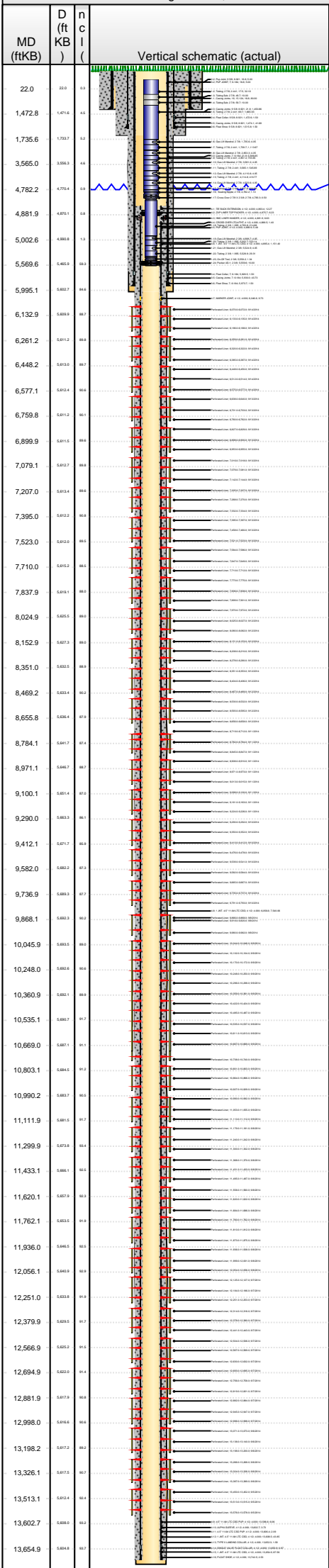


Lease Review

Well Name: RAZOR FEDERAL 26L-2303A

API Number 051233798900		WPC ID 1CO0761032			Well Permit Number			Field Name DJ Horizontal Niobrara			County Weld		State CO		
Well Configuration Type Lateral/Horizontal				Orig KB Elv (ft) 4,753.80		Ground Elevation (ft) 4,737.00		Casing Flange Elevation (ft)		Tubing Head Elevation (ft)		Total Depth (ftKB) 13,750.0			
Original Spud Date 5/9/2014		Completion Date 9/14/2014		Asset Group Redtail			Responsible Engineer Andrew Fish			N/S Dist (ft) 2,320.0		N/S Ref FSL	E/W Dist (ft) 693.0		E/W Ref FWL
Lot	Quarter 1 NW	Quarter 2 SW	Quarter 3	Quarter 4	Section 26	Section Suffix	Section Type	Township 10	Township N/S Dir N	Range 58	Range E/W Dir W	Meridian			

Lateral/Horizontal - Original Hole, 12/29/2014 11:03:34 AM



Wellbore Sections

Section Des	Wellbore Name	Start Date	Size (in)	Act Top (ftKB)	Act Btm (ftKB)
Conductor	Original Hole	3/28/2014	20	16.8	96.8
Surface	Original Hole	5/9/2014	13 1/2	96.8	1,537.0
Intermediate	Original Hole	5/10/2014	8 3/4	1,537.0	5,995.0
Lateral	Original Hole	5/13/2014	6	5,995.0	13,750.0

Conductor Pipe, 96.8ftKB

OD (in)	Wt (lb/ft)	Grade	Top (ftKB)	Btm (ftKB)	Len (ft)	Item Des
16	75.00	J-55	16.8	96.8	80.00	Casing Joints

Surface Csg, 1,517.3ftKB

OD (in)	Wt (lb/ft)	Grade	Top (ftKB)	Btm (ftKB)	Len (ft)	Item Des
9 5/8	36.00	J-55	16.8	16.8	0.00	Landing Joint
9 5/8	36.00	J-55	16.8	21.8	5.00	Pup Joint
9 5/8	36.00	J-55	21.8	1,472.6	1,450.86	Casing Joints
9 5/8	36.00	J-55	1,472.6	1,474.1	1.50	Float Collar
9 5/8	36.00	J-55	1,474.1	1,515.8	41.68	Casing Joints
9 5/8	36.00	J-55	1,515.8	1,517.3	1.50	Float Shoe

Intermediate Csg, 5,975.2ftKB

OD (in)	Wt (lb/ft)	Grade	Top (ftKB)	Btm (ftKB)	Len (ft)	Item Des
7	29.00	L-80	16.8	16.8	0.00	LANDING JOINT
7	29.00	L-80	16.8	21.8	5.00	PUP JOINT
7	29.00	L-80	21.8	5,928.5	5,906.65	Casing Joints
7	29.00	L-80	5,928.5	5,930.0	1.50	Float Collar
7	29.00	L-80	5,930.0	5,973.7	43.73	Casing Joints
7	29.00	L-80	5,973.7	5,975.2	1.50	Float Shoe

Liner, 13,745.0ftKB

OD (in)	Wt (lb/ft)	Grade	Top (ftKB)	Btm (ftKB)	Len (ft)	Item Des
4 1/2	11.60	L-80	4,863.4	4,875.7	12.27	TIE BACK EXTENSION
4 1/2	11.60	L-80	4,875.7	4,881.9	6.23	ZXP LINER TOP PACKER
4 1/2	11.60	L-80	4,881.9	4,888.6	6.63	HMC LINER HANGER
4 1/2	11.60	L-80	4,888.6	4,890.0	1.40	CROSS OVER LTCxVTHT
4 1/2	11.60	L-80	4,890.0	4,895.4	5.48	PUP JOINT
4 1/2	11.60	L-80	4,895.4	6,046.8	1,151.40	1 JNT. 4.5" 11.6# LTC CSG
4 1/2	11.60	P-110	6,046.8	6,056.6	9.73	MARKER JOINT
4 1/2	11.60	L-80	6,056.6	13,596.6	7,540.06	1 JNT. 4.5" 11.6# LTC CSG
4 1/2	11.60	L-80	13,596.6	13,602.7	6.06	4.5" 11.6# LTC CSG PUP
4 1/2	11.60	L-80	13,602.7	13,606.4	3.73	ALPHA SLEEVE
4 1/2	11.60	L-80	13,606.4	13,608.5	2.09	4.5" 11.6# LTC CSG PUP
4 1/2	11.60	L-80	13,608.5	13,652.4	43.85	1 JNT. 4.5" 11.6# LTC CSG
4 1/2	11.60	L-80	13,652.4	13,653.9	1.59	TYPE II LANDING COLLAR
4 1/2	11.60	L-80	13,653.9	13,654.9	0.97	SINGLE VALVE FLOAT COLLAR
4 1/2	11.60	L-80	13,654.9	13,742.5	87.56	1 JNT. 4.5" 11.6# LTC CSG
4 1/2	11.60	L-80	13,742.5	13,745.0	2.53	FLOAT SHOE

Cement Stages

Des	Pump Start Date	Drill Out Date	Top (ftKB)	Btm (ftKB)	Top Meas Meth
Conductor Cement	3/28/2014		16.8	96.8	Returns to Surface
Surface Casing Cement	5/9/2014		16.8	1,537.0	Returns to Surface
Intermediate Casing Cement	5/13/2014		16.8	5,975.0	Returns to Surface
Liner Cement	5/19/2014		4,863.4	13,745.0	Volume Calculations

Perforations

Type of Hole	Date	Top (ftKB)	Btm (ftKB)	Zone
Perforated Liner	9/14/2014	6,070.0	6,072.0	Niobrara, Original Hole
Perforated Liner	9/14/2014	6,133.0	6,135.0	Niobrara, Original Hole
Perforated Liner	9/14/2014	6,186.0	6,188.0	Niobrara, Original Hole
Perforated Liner	9/14/2014	6,259.0	6,261.0	Niobrara, Original Hole
Perforated Liner	9/14/2014	6,320.0	6,322.0	Niobrara, Original Hole
Perforated Liner	9/14/2014	6,385.0	6,387.0	Niobrara, Original Hole
Perforated Liner	9/14/2014	6,448.0	6,450.0	Niobrara, Original Hole
Perforated Liner	9/14/2014	6,512.0	6,514.0	Niobrara, Original Hole
Perforated Liner	9/14/2014	6,575.0	6,577.0	Niobrara, Original Hole
Perforated Liner	9/13/2014	6,638.0	6,640.0	Niobrara, Original Hole
Perforated Liner	9/13/2014	6,701.0	6,703.0	Niobrara, Original Hole
Perforated Liner	9/13/2014	6,760.0	6,762.0	Niobrara, Original Hole
Perforated Liner	9/13/2014	6,827.0	6,829.0	Niobrara, Original Hole
Perforated Liner	9/13/2014	6,898.0	6,900.0	Niobrara, Original Hole
Perforated Liner	9/13/2014	6,953.0	6,955.0	Niobrara, Original Hole
Perforated Liner	9/13/2014	7,016.0	7,018.0	Niobrara, Original Hole
Perforated Liner	9/13/2014	7,079.0	7,081.0	Niobrara, Original Hole
Perforated Liner	9/13/2014	7,142.0	7,144.0	Niobrara, Original Hole
Perforated Liner	9/13/2014	7,205.0	7,207.0	Niobrara, Original Hole



Lease Review

Well Name: RAZOR FEDERAL 26L-2303A

API Number 051233798900		WPC ID 1CO0761032			Well Permit Number			Field Name DJ Horizontal Niobrara			County Weld			State CO	
Well Configuration Type Lateral/Horizontal				Orig KB Elv (ft) 4,753.80		Ground Elevation (ft) 4,737.00		Casing Flange Elevation (ft)			Tubing Head Elevation (ft)		Total Depth (ft)KB 13,750.0		
Original Spud Date 5/9/2014		Completion Date 9/14/2014		Asset Group Redtail			Responsible Engineer Andrew Fish			N/S Dist (ft) 2,320.0		N/S Ref FSL	E/W Dist (ft) 693.0		E/W Ref FWL
Lot	Quarter 1 NW	Quarter 2 SW	Quarter 3	Quarter 4	Section 26	Section Suffix	Section Type	Township 10	Township N/S Dir N	Range 58	Range E/W Dir W	Meridian			

Lateral/Horizontal - Original Hole, 12/29/2014 11:03:35 AM					Perforations					
MD (ftKB)	D (ft KB)	nc (ft)	Vertical schematic (actual)	Logs	Type of Hole	Date	Top (ftKB)	Btm (ftKB)	Zone	
					Perforated Liner	9/13/2014	7,268.0	7,270.0	Niobrara, Original Hole	
					Perforated Liner	9/13/2014	7,332.0	7,334.0	Niobrara, Original Hole	
22.0	22.0	12.5			Perforated Liner	9/13/2014	7,395.0	7,397.0	Niobrara, Original Hole	
1,472.8	1,474.0	4.5			Perforated Liner	9/13/2014	7,458.0	7,460.0	Niobrara, Original Hole	
1,735.6	1,732.7	4.2			Perforated Liner	9/13/2014	7,521.0	7,523.0	Niobrara, Original Hole	
3,565.0	3,563.3	1.6			Perforated Liner	9/13/2014	7,584.0	7,586.0	Niobrara, Original Hole	
4,782.2	4,770.4	0.8			Perforated Liner	9/13/2014	7,647.0	7,649.0	Niobrara, Original Hole	
4,881.9	4,875.1	1.8			Perforated Liner	9/13/2014	7,710.0	7,712.0	Niobrara, Original Hole	
5,002.6	4,986.8	1.5			Perforated Liner	9/13/2014	7,773.0	7,775.0	Niobrara, Original Hole	
5,569.6	5,465.5	0.83			Perforated Liner	9/13/2014	7,836.0	7,838.0	Niobrara, Original Hole	
5,995.1	5,882.3	0.64			Perforated Liner	9/13/2014	7,899.0	7,901.0	Niobrara, Original Hole	
6,132.9	6,030.9	0.61			Perforated Liner	9/12/2014	7,970.0	7,972.0	Niobrara, Original Hole	
6,261.2	6,161.2	0.68			Perforated Liner	9/12/2014	8,025.0	8,027.0	Niobrara, Original Hole	
6,448.2	6,353.0	0.67			Perforated Liner	9/12/2014	8,080.0	8,082.0	Niobrara, Original Hole	
6,577.1	6,482.4	0.68			Perforated Liner	9/12/2014	8,151.0	8,153.0	Niobrara, Original Hole	
6,759.8	6,661.2	0.61			Perforated Liner	9/12/2014	8,208.0	8,210.0	Niobrara, Original Hole	
6,899.9	6,801.2	0.66			Perforated Liner	9/12/2014	8,278.0	8,280.0	Niobrara, Original Hole	
7,079.1	6,981.2	0.68			Perforated Liner	9/12/2014	8,351.0	8,353.0	Niobrara, Original Hole	
7,207.0	7,081.4	0.68			Perforated Liner	9/12/2014	8,404.0	8,406.0	Niobrara, Original Hole	
7,395.0	7,281.2	0.63			Perforated Liner	9/12/2014	8,467.0	8,469.0	Niobrara, Original Hole	
7,523.0	7,421.0	0.65			Perforated Liner	9/12/2014	8,530.0	8,532.0	Niobrara, Original Hole	
7,710.0	7,601.2	0.66			Perforated Liner	9/12/2014	8,593.0	8,595.0	Niobrara, Original Hole	
7,837.9	7,751.1	0.60			Perforated Liner	9/12/2014	8,656.0	8,658.0	Niobrara, Original Hole	
8,024.9	7,921.5	0.60			Perforated Liner	9/11/2014	8,719.0	8,712.0	Niobrara, Original Hole	
8,152.9	8,071.3	0.65			Perforated Liner	9/11/2014	8,782.0	8,784.0	Niobrara, Original Hole	
8,351.0	8,251.5	0.68			Perforated Liner	9/11/2014	8,845.0	8,847.0	Niobrara, Original Hole	
8,469.2	8,361.4	0.62			Perforated Liner	9/11/2014	8,908.0	8,910.0	Niobrara, Original Hole	
8,655.8	8,551.9	0.73			Perforated Liner	9/11/2014	8,971.0	8,973.0	Niobrara, Original Hole	
8,784.1	8,681.7	0.71			Perforated Liner	9/11/2014	9,013.0	9,015.0	Niobrara, Original Hole	
8,971.1	8,861.7	0.67			Perforated Liner	9/11/2014	9,098.0	9,100.0	Niobrara, Original Hole	
9,100.1	8,981.4	0.62			Perforated Liner	9/11/2014	9,161.0	9,163.0	Niobrara, Original Hole	
9,290.0	9,181.3	0.61			Perforated Liner	9/11/2014	9,224.0	9,226.0	Niobrara, Original Hole	
9,412.1	9,301.7	0.63			Perforated Liner	9/10/2014	9,290.0	9,292.0	Niobrara, Original Hole	
9,582.0	9,481.5	0.73			Perforated Liner	9/10/2014	9,350.0	9,352.0	Niobrara, Original Hole	
9,736.9	9,631.2	0.67			Perforated Liner	9/10/2014	9,410.0	9,412.0	Niobrara, Original Hole	
9,868.1	9,761.2	0.62			Perforated Liner	9/10/2014	9,476.0	9,478.0	Niobrara, Original Hole	
10,045.9	9,941.5	0.60			Perforated Liner	9/10/2014	9,539.0	9,541.0	Niobrara, Original Hole	
10,248.0	10,141.6	0.66			Perforated Liner	9/10/2014	9,582.0	9,584.0	Niobrara, Original Hole	
10,360.9	10,261.7	0.68			Perforated Liner	9/10/2014	9,665.0	9,667.0	Niobrara, Original Hole	
10,535.1	10,431.7	0.67			Perforated Liner	9/10/2014	9,735.0	9,737.0	Niobrara, Original Hole	
10,669.0	10,561.5	0.61			Perforated Liner	9/10/2014	9,791.0	9,793.0	Niobrara, Original Hole	
10,803.1	10,691.3	0.72			Perforated Liner	9/10/2014	9,791.0	9,793.0	Niobrara, Original Hole	
10,990.2	10,881.7	0.65			Perforated Liner	9/9/2014	9,866.0	9,868.0	Niobrara, Original Hole	
11,111.9	11,001.2	0.67			Perforated Liner	9/9/2014	9,918.0	9,920.0	Niobrara, Original Hole	
11,299.9	11,191.4	0.64			Perforated Liner	9/9/2014	9,980.0	9,982.0	Niobrara, Original Hole	
11,433.1	11,321.5	0.63			Perforated Liner	9/9/2014	10,044.0	10,046.0	Niobrara, Original Hole	
11,620.1	11,511.7	0.63			Perforated Liner	9/9/2014	10,102.0	10,104.0	Niobrara, Original Hole	
11,762.1	11,651.5	0.68			Perforated Liner	9/9/2014	10,170.0	10,172.0	Niobrara, Original Hole	
11,936.0	11,821.6	0.65			Perforated Liner	9/9/2014	10,248.0	10,250.0	Niobrara, Original Hole	
12,056.1	11,941.9	0.68			Perforated Liner	9/9/2014	10,296.0	10,298.0	Niobrara, Original Hole	
12,251.0	12,131.9	0.71			Perforated Liner	9/9/2014	10,359.0	10,361.0	Niobrara, Original Hole	
12,379.9	12,261.7	0.67			Perforated Liner	9/9/2014	10,422.0	10,424.0	Niobrara, Original Hole	
12,566.9	12,451.2	0.65			Perforated Liner	9/9/2014	10,485.0	10,487.0	Niobrara, Original Hole	
12,694.9	12,581.4	0.64			Perforated Liner	9/9/2014	10,535.0	10,537.0	Niobrara, Original Hole	
12,881.9	12,771.3	0.63			Perforated Liner	9/9/2014	10,611.0	10,613.0	Niobrara, Original Hole	
12,998.0	12,881.6	0.66			Perforated Liner	9/9/2014	10,667.0	10,669.0	Niobrara, Original Hole	
13,198.2	13,081.2	0.62			Perforated Liner	9/9/2014	10,738.0	10,740.0	Niobrara, Original Hole	
13,326.1	13,211.7	0.67			Perforated Liner	9/9/2014	10,801.0	10,803.0	Niobrara, Original Hole	
13,513.1	13,401.4	0.64			Perforated Liner	9/9/2014	10,864.0	10,866.0	Niobrara, Original Hole	
13,602.7	13,491.5	0.62			Perforated Liner	9/9/2014	10,927.0	10,929.0	Niobrara, Original Hole	
13,654.9	13,541.7	0.67			Perforated Liner	9/9/2014	10,990.0	10,992.0	Niobrara, Original Hole	
					Perforated Liner	9/9/2014	11,053.0	11,055.0	Niobrara, Original Hole	
					Perforated Liner	9/9/2014	11,110.0	11,112.0	Niobrara, Original Hole	
					Perforated Liner	9/8/2014	11,179.0	11,181.0	Niobrara, Original Hole	
					Perforated Liner	9/8/2014	11,240.0	11,242.0	Niobrara, Original Hole	
					Perforated Liner	9/8/2014	11,300.0	11,302.0	Niobrara, Original Hole	
					Perforated Liner	9/8/2014	11,368.0	11,370.0	Niobrara, Original Hole	
					Perforated Liner	9/8/2014	11,431.0	11,433.0	Niobrara, Original Hole	
					Perforated Liner	9/8/2014	11,495.0	11,497.0	Niobrara, Original Hole	
					Perforated Liner	9/8/2014	11,558.0	11,560.0	Niobrara, Original Hole	
					Perforated Liner	9/8/2014	11,620.0	11,622.0	Niobrara, Original Hole	
					Perforated Liner	9/8/2014	11,684.0	11,686.0	Niobrara, Original Hole	



Lease Review
Well Name: RAZOR FEDERAL 26L-2303A

API Number 051233798900		WPC ID 1CO0761032			Well Permit Number			Field Name DJ Horizontal Niobrara			County Weld		State CO		
Well Configuration Type Lateral/Horizontal				Orig KB Elv (ft) 4,753.80		Ground Elevation (ft) 4,737.00		Casing Flange Elevation (ft)		Tubing Head Elevation (ft)		Total Depth (ftKB) 13,750.0			
Original Spud Date 5/9/2014		Completion Date 9/14/2014		Asset Group Redtail			Responsible Engineer Andrew Fish			N/S Dist (ft) 2,320.0		N/S Ref FSL	E/W Dist (ft) 693.0		E/W Ref FWL
Lot	Quarter 1 NW	Quarter 2 SW	Quarter 3	Quarter 4	Section 26	Section Suffix	Section Type	Township 10	Township N/S Dir N	Range 58	Range E/W Dir W	Meridian			

Lateral/Horizontal - Original Hole, 12/29/2014 11:03:36 AM						Perforations							
MD (ftKB)	D (ft KB)	n ()	c ()	l ()	Vertical schematic (actual)	Logs	Type of Hole		Date	Top (ftKB)	Btm (ftKB)	Zone	
22.0	22.0	1.3					Perforated Liner	9/8/2014	11,760.0	11,762.0	Niobrara, Original Hole		
1,472.8	1,471.4	1.5				Perforated Liner	9/8/2014	11,810.0	11,812.0	Niobrara, Original Hole			
1,735.6	1,733.7	1.9				Perforated Liner	9/8/2014	11,873.0	11,875.0	Niobrara, Original Hole			
3,565.0	3,558.3	6.7				Perforated Liner	9/8/2014	11,936.0	11,938.0	Niobrara, Original Hole			
4,782.2	4,770.4	11.8				Perforated Liner	9/8/2014	11,999.0	12,001.0	Niobrara, Original Hole			
4,881.9	4,870.1	11.8				Perforated Liner	9/8/2014	12,054.0	12,056.0	Niobrara, Original Hole			
5,002.6	4,988.8	13.8				Perforated Liner	9/7/2014	12,125.0	12,127.0	Niobrara, Original Hole			
5,569.6	5,465.8	103.8				Perforated Liner	9/7/2014	12,184.0	12,186.0	Niobrara, Original Hole			
5,995.1	5,882.7	112.4				Perforated Liner	9/7/2014	12,251.0	12,253.0	Niobrara, Original Hole			
6,132.9	6,019.9	113.0				Perforated Liner	9/7/2014	12,251.0	12,253.0	Niobrara, Original Hole			
6,261.2	6,148.2	113.0				Perforated Liner	9/7/2014	12,314.0	12,316.0	Niobrara, Original Hole			
6,448.2	6,335.2	113.0				Perforated Liner	9/7/2014	12,314.0	12,316.0	Niobrara, Original Hole			
6,577.1	6,464.1	113.0				Perforated Liner	9/7/2014	12,378.0	12,380.0	Niobrara, Original Hole			
6,759.8	6,646.8	113.0				Perforated Liner	9/7/2014	12,378.0	12,380.0	Niobrara, Original Hole			
6,899.9	6,786.9	113.0				Perforated Liner	9/7/2014	12,441.0	12,443.0	Niobrara, Original Hole			
7,079.1	6,967.1	112.0				Perforated Liner	9/7/2014	12,504.0	12,506.0	Niobrara, Original Hole			
7,207.0	7,095.0	112.0				Perforated Liner	9/7/2014	12,567.0	12,569.0	Niobrara, Original Hole			
7,395.0	7,282.0	113.0				Perforated Liner	9/7/2014	12,630.0	12,632.0	Niobrara, Original Hole			
7,523.0	7,410.0	113.0				Perforated Liner	9/7/2014	12,693.0	12,695.0	Niobrara, Original Hole			
7,710.0	7,597.0	113.0				Perforated Liner	9/7/2014	12,756.0	12,758.0	Niobrara, Original Hole			
7,837.9	7,724.9	113.0				Perforated Liner	9/7/2014	12,819.0	12,821.0	Niobrara, Original Hole			
8,024.9	7,911.9	113.0				Perforated Liner	9/7/2014	12,882.0	12,884.0	Niobrara, Original Hole			
8,152.9	8,039.9	113.0				Perforated Liner	9/7/2014	12,882.0	12,884.0	Niobrara, Original Hole			
8,351.0	8,238.0	113.0				Perforated Liner	9/7/2014	12,945.0	12,947.0	Niobrara, Original Hole			
8,469.2	8,357.2	112.0				Perforated Liner	9/7/2014	12,996.0	12,998.0	Niobrara, Original Hole			
8,655.8	8,542.8	113.0				Perforated Liner	9/7/2014	12,996.0	12,998.0	Niobrara, Original Hole			
8,784.1	8,671.1	113.0				Perforated Liner	9/6/2014	13,071.0	13,073.0	Niobrara, Original Hole			
8,971.1	8,858.1	113.0				Perforated Liner	9/6/2014	13,138.0	13,140.0	Niobrara, Original Hole			
9,100.1	8,987.1	113.0				Perforated Liner	9/6/2014	13,138.0	13,140.0	Niobrara, Original Hole			
9,290.0	9,177.0	113.0				Perforated Liner	9/6/2014	13,198.0	13,200.0	Niobrara, Original Hole			
9,412.1	9,299.1	113.0				Perforated Liner	9/6/2014	13,266.0	13,268.0	Niobrara, Original Hole			
9,582.0	9,469.0	113.0				Perforated Liner	9/6/2014	13,266.0	13,268.0	Niobrara, Original Hole			
9,736.9	9,623.9	113.0				Perforated Liner	9/6/2014	13,324.0	13,326.0	Niobrara, Original Hole			
9,868.1	9,755.1	113.0				Perforated Liner	9/6/2014	13,387.0	13,389.0	Niobrara, Original Hole			
10,045.9	9,932.9	113.0				Perforated Liner	9/5/2014	13,387.0	13,389.0	Niobrara, Original Hole			
10,248.0	10,135.0	113.0				Perforated Liner	9/5/2014	13,450.0	13,452.0	Niobrara, Original Hole			
10,360.9	10,247.9	113.0				Perforated Liner	9/5/2014	13,513.0	13,515.0	Niobrara, Original Hole			
10,535.1	10,422.1	113.0				Perforated Liner	9/5/2014	13,513.0	13,515.0	Niobrara, Original Hole			
10,669.0	10,556.0	113.0				Perforated Liner	9/5/2014	13,576.0	13,578.0	Niobrara, Original Hole			
10,803.1	10,690.1	113.0				Sand Frac on 9/5/2014 06:00							
10,990.2	10,877.2	113.0			Comment								
11,111.9	11,000.9	113.0			Treatment End Date:9/14/2014; Number of staged intervals: 40;								
11,299.9	11,186.9	113.0			Total 15% HCl used: 1003 bbl; Min frac gradient: 0.799 psi/ft;								
11,433.1	11,319.1	113.0			Number of perfs: 1440; 81382 bbl ClearStar XL Gel, 18264 bbl								
11,620.1	11,506.1	113.0			ClearStar Linear Gel, 32704 bbl Slickwater								
11,762.1	11,648.1	113.0			Stim/Treat Fluids								
11,936.0	11,822.0	113.0			ClearStar XL Gel; Linear Gel; 15% HCl, <fluidtyp>								
12,056.1	11,942.1	113.0			Proppant Frm (lb)								
12,251.0	12,137.0	113.0			Total Clean Vol...								
12,379.9	12,265.9	113.0			Avg Treat Rate...								
12,566.9	12,452.9	113.0			Max Treat Rate...								
12,694.9	12,580.9	113.0			Avg Treat Press...								
12,881.9	12,767.9	113.0			P Max (psi)								
12,998.0	12,884.0	113.0			Frac Gradient (p...								
13,198.2	13,084.2	113.0			5,900,755.0								
13,326.1	13,212.1	113.0			133352.80								
13,513.1	13,400.1	113.0			50.60								
13,602.7	13,489.7	113.0			58.70								
13,654.9	13,541.9	113.0			5,940.0								
					8,429.0								
					0.80								
					Stim/Treat Stages								
					Stg #								
					Start Date								
					Top Depth (ftKB)								
					Bottom Depth (ftKB)								
					Vol Clean Pump (bbl)								
					Vol Slurry (bbl)								
					1								
					9/5/2014								
					13,450.0								
					13,578.0								
					4153.60								
					4268.70								
					Additive								
					Type								
					Amount								
					Units								
					Sand Size								
					20/40 WS								
					102,126.0								
					lb								
					20/40								
					Additive								
					Type								
					Amount								
					Units								
					Sand Size								
					40/70 WS								
					4,822.0								
					lb								
					40/70								
					Stg #								
					Start Date								
					Top Depth (ftKB)								
					Bottom Depth (ftKB)								
					Vol Clean Pump (bbl)								
					Vol Slurry (bbl)								
					2								
					9/6/2014								
					13,266.0								
					13,389.0								
					3104.00								
					3216.60								
					Additive								
					Type								
					Amount								
					Units								
					Sand Size								
					20/40 WS								
					101,862.0								
					lb								
					20/40								
					Additive								
					Type								
					Amount								
					Units								
					Sand Size								
					40/70 WS								
					2,760.0								
					lb								
					40/70								
					Stg #								
					Start Date								
					Top Depth (ftKB)								
					Bottom Depth (ftKB)								
					Vol Clean Pump (bbl)								
					Vol Slurry (bbl)								
					3								
					9/6/2014								
					13,071.0								
					13,200.0								
					3332.30								
					3419.10								
					Additive								
					Type								
					Amount								
					Units								
					Sand Size								
					20/40 WS								
					77,929.0								
					lb								
					20/40								
					Additive								
					Type								
					Amount								
					Units								
					Sand Size								
					40/70 WS								
					2,725.0								
					lb								
					40/70								
					Stg #								
					Start Date								
					Top Depth (ftKB)								
					Bottom Depth (ftKB)								
					Vol Clean Pump (bbl)								
					Vol Slurry (bbl)								
					4								
					9/7/2014								
					12,882.0								
					12,998.0								
					3146.10								
					3264.10								
					Additive								
					Type								
					Amount								
					Units								
					Sand Size								
					20/40 WS								
					106,863.0								
					lb								
					20/40								
					Additive								
					Type								
					Amount								
					Units								
					Sand Size								
					40/70 WS								
					2,776.0								
					lb								
					40/70								
					Stg #								
					Start Date								
					Top Depth (ftKB)								
					Bottom Depth (ftKB)								
					Vol Clean Pump (bbl)								
					Vol Slurry (bbl)								
					5								
					9/7/2014								
					12,693.0								
					12,821.0								
					3431.80								
					3592.00								
					Additive								
					Type								
					Amount								
					Units								
					Sand Size								
					20/40 WS								
					146,380.0								
					lb								
					20/40								
					Additive								
					Type								
					Amount								
					Units								
					Sand Size								
					40/70 WS								
					2,455.0								
					lb								
					40/70								
					Stg #								
					Start Date								
					Top Depth (ftKB)								
					Bottom Depth (ftKB)								
					Vol Clean Pump (bbl)								
					Vol Slurry (bbl)								
					6								
					9/7/2014								
					12,504.0								
					12,632.0								
					3345.80								
					3511.60								
					Additive								
					Type								
					Amount								
					Units								
					Sand Size								
					20/40 WS								
					151,538.0								
					lb								
					20/40								
					Additive								
					Type								
					Amount								
					Units								
					Sand Size								



Lease Review
Well Name: RAZOR FEDERAL 26L-2303A

API Number 051233798900		WPC ID 1CO0761032		Well Permit Number		Field Name DJ Horizontal Niobrara		County Weld		State CO															
Well Configuration Type Lateral/Horizontal		Orig KB Elv (ft)		4,753.80		Ground Elevation (ft)		4,737.00		Casing Flange Elevation (ft)		Tubing Head Elevation (ft)		Total Depth (ftKB)		13,750.0									
Original Spud Date 5/9/2014		Completion Date 9/14/2014		Asset Group Redtail		Responsible Engineer Andrew Fish		N/S Dist (ft)		2,320.0		N/S Ref FSL		E/W Dist (ft)		693.0 FWL									
Lot		Quarter 1 NW		Quarter 2 SW		Quarter 3		Quarter 4		Section 26		Section Suffix		Section Type		Township 10 N		Township N/S Dir Range 58 W		Meridian					
Lateral/Horizontal - Original Hole, 12/29/2014 11:03:38 AM										Stim/Treat Stages															
MD (ftKB)		D (ftKB)		n (ft)		c (ft)		l (ft)		Vertical schematic (actual)		Logs		Stg #		Start Date		Top Depth (ftKB)		Bottom Depth (ftKB)		Vol Clean Pump (bbl)		Vol Slurry (bbl)	
														8		9/7/2014		12,125.0		12,253.0		3493.00		3658.70	
														Additive Proppant		Type 20/40 WS		Amount 151,686.0		Units lb		Sand Size 20/40			
														Additive Proppant		Type 40/70 WS		Amount 2,252.0		Units lb		Sand Size 40/70			
														Stg #		Start Date		Top Depth (ftKB)		Bottom Depth (ftKB)		Vol Clean Pump (bbl)		Vol Slurry (bbl)	
														9		9/7/2014		11,936.0		12,056.0		3282.20		3451.10	
														Additive Proppant		Type 20/40 WS		Amount 153,966.0		Units lb		Sand Size 20/40			
														Additive Proppant		Type 40/70 WS		Amount 2,879.0		Units lb		Sand Size 40/70			
														Stg #		Start Date		Top Depth (ftKB)		Bottom Depth (ftKB)		Vol Clean Pump (bbl)		Vol Slurry (bbl)	
														10		9/8/2014		11,760.0		11,875.0		3327.80		3500.10	
														Additive Proppant		Type 20/40 WS		Amount 157,243.0		Units lb		Sand Size 20/40			
														Additive Proppant		Type 40/70 WS		Amount 2,807.0		Units lb		Sand Size 40/70			
														Stg #		Start Date		Top Depth (ftKB)		Bottom Depth (ftKB)		Vol Clean Pump (bbl)		Vol Slurry (bbl)	
														11		9/8/2014		11,558.0		11,686.0		3432.00		3596.70	
														Additive Proppant		Type 20/40 WS		Amount 151,016.0		Units lb		Sand Size 20/40			
														Additive Proppant		Type 40/70 WS		Amount 1,955.0		Units lb		Sand Size 40/70			
														Stg #		Start Date		Top Depth (ftKB)		Bottom Depth (ftKB)		Vol Clean Pump (bbl)		Vol Slurry (bbl)	
														12		9/8/2014		11,368.0		11,497.0		3607.00		3768.10	
														Additive Proppant		Type 20/40 WS		Amount 146,296.0		Units lb		Sand Size 20/40			
														Additive Proppant		Type 40/70 WS		Amount 3,300.0		Units lb		Sand Size 40/70			
														Stg #		Start Date		Top Depth (ftKB)		Bottom Depth (ftKB)		Vol Clean Pump (bbl)		Vol Slurry (bbl)	
														13		9/8/2014		11,179.0		11,302.0		3331.70		3493.40	
														Additive Proppant		Type 20/40 WS		Amount 147,623.0		Units lb		Sand Size 20/40			
														Additive Proppant		Type 40/70 WS		Amount 2,546.0		Units lb		Sand Size 40/70			
														Stg #		Start Date		Top Depth (ftKB)		Bottom Depth (ftKB)		Vol Clean Pump (bbl)		Vol Slurry (bbl)	
														14		9/9/2014		10,990.0		11,112.0		3337.90		3500.80	
														Additive Proppant		Type 20/40 WS		Amount 148,677.0		Units lb		Sand Size 20/40			
														Additive Proppant		Type 40/70 WS		Amount 2,628.0		Units lb		Sand Size 40/70			
														Stg #		Start Date		Top Depth (ftKB)		Bottom Depth (ftKB)		Vol Clean Pump (bbl)		Vol Slurry (bbl)	
														15		9/9/2014		10,801.0		10,929.0		3290.80		3450.20	
														Additive Proppant		Type 20/40 WS		Amount 145,621.0		Units lb		Sand Size 20/40			
														Additive Proppant		Type 40/70 WS		Amount 2,439.0		Units lb		Sand Size 40/70			
														Stg #		Start Date		Top Depth (ftKB)		Bottom Depth (ftKB)		Vol Clean Pump (bbl)		Vol Slurry (bbl)	
														16		9/9/2014		10,611.0		10,740.0		3345.30		3507.30	
														Additive Proppant		Type 20/40 WS		Amount 148,035.0		Units lb		Sand Size 20/40			
														Additive Proppant		Type 40/70 WS		Amount 2,410.0		Units lb		Sand Size 40/70			
														Stg #		Start Date		Top Depth (ftKB)		Bottom Depth (ftKB)		Vol Clean Pump (bbl)		Vol Slurry (bbl)	
														17		9/9/2014		10,422.0		10,537.0		3324.60		3484.60	
														Additive Proppant		Type 20/40 WS		Amount 146,104.0		Units lb		Sand Size 20/40			
														Additive Proppant		Type 40/70 WS		Amount 2,495.0		Units lb		Sand Size 40/70			
														Stg #		Start Date		Top Depth (ftKB)		Bottom Depth (ftKB)		Vol Clean Pump (bbl)		Vol Slurry (bbl)	
														18		9/9/2014		10,248.0		10,361.0		3300.60		3457.80	
														Additive Proppant		Type 20/40 WS		Amount 143,456.0		Units lb		Sand Size 20/40			
														Additive Proppant		Type 40/70 WS		Amount 2,604.0		Units lb		Sand Size 40/70			
														Stg #		Start Date		Top Depth (ftKB)		Bottom Depth (ftKB)		Vol Clean Pump (bbl)		Vol Slurry (bbl)	
														19		9/10/2014		10,044.0		10,712.0		3306.60		3470.30	
														Additive Proppant		Type 20/40 WS		Amount 149,503.0		Units lb		Sand Size 20/40			
														Additive Proppant		Type 40/70 WS		Amount 2,594.0		Units lb		Sand Size 40/70			
														Stg #		Start Date		Top Depth (ftKB)		Bottom Depth (ftKB)		Vol Clean Pump (bbl)		Vol Slurry (bbl)	
														20		9/10/2014		9,866.0		9,982.0		3281.90		3442.40	
														Additive Proppant		Type 20/40 WS		Amount 146,565.0		Units lb		Sand Size 20/40			
														Additive Proppant		Type 40/70 WS		Amount 2,547.0		Units lb		Sand Size 40/70			
														Stg #		Start Date		Top Depth (ftKB)		Bottom Depth (ftKB)		Vol Clean Pump (bbl)		Vol Slurry (bbl)	
														21		9/10/2014		9,665.0		9,793.0		3301.70		3469.20	
														Additive Proppant		Type 20/40 WS		Amount 152,903.0		Units lb		Sand Size 20/40			
														Additive Proppant		Type 40/70 WS		Amount 2,683.0		Units lb		Sand Size 40/70			
														Stg #		Start Date		Top Depth (ftKB)		Bottom Depth (ftKB)		Vol Clean Pump (bbl)		Vol Slurry (bbl)	
														22		9/10/2014		9,476.0		9,584.0		3334.40		3501.60	
														Additive Proppant		Type 20/40 WS		Amount 152,814.0		Units lb		Sand Size 20/40			
														Additive Proppant		Type 40/70 WS		Amount 2,527.0		Units lb		Sand Size 40/70			
														Stg #		Start Date		Top Depth (ftKB)		Bottom Depth (ftKB)		Vol Clean Pump (bbl)		Vol Slurry (bbl)	
														23		9/10/2014		9,290.0		9,412.0		3339.90		3501.80	
														Additive Proppant		Type 20/40 WS		Amount 147,723.0		Units lb		Sand Size 20/40			



Lease Review
Well Name: RAZOR FEDERAL 26L-2303A

API Number 051233798900		WPC ID 1CO0761032		Well Permit Number		Field Name DJ Horizontal Niobrara		County Weld		State CO		
Well Configuration Type Lateral/Horizontal		Orig KB Elv (ft) 4,753.80		Ground Elevation (ft) 4,737.00		Casing Flange Elevation (ft)		Tubing Head Elevation (ft)		Total Depth (ftKB) 13,750.0		
Original Spud Date 5/9/2014		Completion Date 9/14/2014		Asset Group Redtail		Responsible Engineer Andrew Fish		N/S Dist (ft) 2,320.0		N/S Ref FSL E/W Dist (ft) 693.0 E/W Ref FWL		
Lot		Quarter 1 NW	Quarter 2 SW	Quarter 3	Quarter 4	Section 26	Section Suffix	Section Type	Township 10 N	Township N/S Dir	Range 58 W Range E/W Dir Meridian	
Lateral/Horizontal - Original Hole, 12/29/2014 11:03:39 AM						Additive Proppant		Type 40/70 WS		Amount 2,687.0	Units lb Sand Size 40/70	
MD (ftKB)	D (ft KB)	n ()	c ()	l ()	Vertical schematic (actual)	Logs	Stg #	Start Date	Top Depth (ftKB)	Bottom Depth (ftKB)	Vol Clean Pump (bbl)	Vol Slurry (bbl)
							24	9/11/2014	9,098.0	9,226.0	3294.50	3458.50
22.0	22.0	3.3					Additive Proppant	Type 20/40 WS		Amount 149,989.0	Units lb Sand Size 20/40	
							Additive Proppant	Type 40/70 WS		Amount 2,348.0	Units lb Sand Size 40/70	
1,472.8	1,474.6	4.5					Stg #	Start Date	Top Depth (ftKB)	Bottom Depth (ftKB)	Vol Clean Pump (bbl)	Vol Slurry (bbl)
							25	9/11/2014	8,908.0	9,015.0	3283.70	3449.70
1,735.6	1,733.7	5.2					Additive Proppant	Type 20/40 WS		Amount 151,319.0	Units lb Sand Size 20/40	
							Additive Proppant	Type 40/70 WS		Amount 2,838.0	Units lb Sand Size 40/70	
3,565.0	3,566.3	14.0					Stg #	Start Date	Top Depth (ftKB)	Bottom Depth (ftKB)	Vol Clean Pump (bbl)	Vol Slurry (bbl)
							26	9/11/2014	8,719.0	8,847.0	3304.80	3472.00
4,782.2	4,770.4	18.8					Additive Proppant	Type 20/40 WS		Amount 152,577.0	Units lb Sand Size 20/40	
							Additive Proppant	Type 40/70 WS		Amount 2,736.0	Units lb Sand Size 40/70	
4,881.9	4,870.1	18.8					Stg #	Start Date	Top Depth (ftKB)	Bottom Depth (ftKB)	Vol Clean Pump (bbl)	Vol Slurry (bbl)
							27	9/12/2014	8,530.0	8,658.0	3260.50	3422.00
5,002.6	4,980.8	13.8					Additive Proppant	Type 20/40 WS		Amount 147,006.0	Units lb Sand Size 20/40	
							Additive Proppant	Type 40/70 WS		Amount 2,982.0	Units lb Sand Size 40/70	
5,569.6	5,465.0	104.6					Stg #	Start Date	Top Depth (ftKB)	Bottom Depth (ftKB)	Vol Clean Pump (bbl)	Vol Slurry (bbl)
							28	9/12/2014	8,351.0	8,469.0	3283.10	3449.20
5,995.1	5,882.7	114.6					Additive Proppant	Type 20/40 WS		Amount 151,260.0	Units lb Sand Size 20/40	
							Additive Proppant	Type 40/70 WS		Amount 3,016.0	Units lb Sand Size 40/70	
6,132.9	5,980.9	180.7					Stg #	Start Date	Top Depth (ftKB)	Bottom Depth (ftKB)	Vol Clean Pump (bbl)	Vol Slurry (bbl)
							29	9/12/2014	8,151.0	8,280.0	3266.70	3436.50
6,261.2	5,981.2	188.0					Additive Proppant	Type 20/40 WS		Amount 154,682.0	Units lb Sand Size 20/40	
							Additive Proppant	Type 40/70 WS		Amount 3,006.0	Units lb Sand Size 40/70	
6,448.2	5,933.0	180.7					Stg #	Start Date	Top Depth (ftKB)	Bottom Depth (ftKB)	Vol Clean Pump (bbl)	Vol Slurry (bbl)
							30	9/12/2014	7,970.0	8,082.0	3322.20	3489.40
6,577.1	5,912.4	184.6					Additive Proppant	Type 20/40 WS		Amount 152,515.0	Units lb Sand Size 20/40	
							Additive Proppant	Type 40/70 WS		Amount 2,833.0	Units lb Sand Size 40/70	
6,759.8	5,811.2	191.1					Stg #	Start Date	Top Depth (ftKB)	Bottom Depth (ftKB)	Vol Clean Pump (bbl)	Vol Slurry (bbl)
							31	9/12/2014	7,773.0	7,901.0	3447.40	3618.10
6,899.9	5,811.5	184.0					Additive Proppant	Type 20/40 WS		Amount 155,822.0	Units lb Sand Size 20/40	
							Additive Proppant	Type 40/70 WS		Amount 2,717.0	Units lb Sand Size 40/70	
7,079.1	5,692.7	188.0					Stg #	Start Date	Top Depth (ftKB)	Bottom Depth (ftKB)	Vol Clean Pump (bbl)	Vol Slurry (bbl)
							32	9/12/2014	7,584.0	7,712.0	3282.00	3450.80
7,207.0	5,633.4	188.0					Additive Proppant	Type 20/40 WS		Amount 154,266.0	Units lb Sand Size 20/40	
							Additive Proppant	Type 40/70 WS		Amount 2,507.0	Units lb Sand Size 40/70	
7,395.0	5,632.2	184.6					Stg #	Start Date	Top Depth (ftKB)	Bottom Depth (ftKB)	Vol Clean Pump (bbl)	Vol Slurry (bbl)
							33	9/13/2014	7,395.0	7,523.0	3287.30	3441.10
7,523.0	5,632.0	194.6					Additive Proppant	Type 20/40 WS		Amount 140,288.0	Units lb Sand Size 20/40	
							Additive Proppant	Type 40/70 WS		Amount 2,570.0	Units lb Sand Size 40/70	
7,710.0	5,632.5	194.6					Stg #	Start Date	Top Depth (ftKB)	Bottom Depth (ftKB)	Vol Clean Pump (bbl)	Vol Slurry (bbl)
							34	9/13/2014	7,205.0	7,334.0	3266.20	3427.70
7,837.9	5,633.1	188.0					Additive Proppant	Type 20/40 WS		Amount 146,340.0	Units lb Sand Size 20/40	
							Additive Proppant	Type 40/70 WS		Amount 3,638.0	Units lb Sand Size 40/70	
8,024.9	5,635.5	188.0					Stg #	Start Date	Top Depth (ftKB)	Bottom Depth (ftKB)	Vol Clean Pump (bbl)	Vol Slurry (bbl)
							35	9/13/2014	7,016.0	7,144.0	3257.70	3423.60
8,152.9	5,627.3	194.6					Additive Proppant	Type 20/40 WS		Amount 151,589.0	Units lb Sand Size 20/40	
							Additive Proppant	Type 40/70 WS		Amount 2,471.0	Units lb Sand Size 40/70	
8,351.0	5,632.5	194.6					Stg #	Start Date	Top Depth (ftKB)	Bottom Depth (ftKB)	Vol Clean Pump (bbl)	Vol Slurry (bbl)
							36	9/13/2014	6,827.0	6,955.0	3276.50	3440.20
8,469.2	5,633.4	194.6					Additive Proppant	Type 20/40 WS		Amount 149,488.0	Units lb Sand Size 20/40	
							Additive Proppant	Type 40/70 WS		Amount 2,590.0	Units lb Sand Size 40/70	
8,655.8	5,634.4	194.6					Stg #	Start Date	Top Depth (ftKB)	Bottom Depth (ftKB)	Vol Clean Pump (bbl)	Vol Slurry (bbl)
							37	9/13/2014	6,638.0	6,762.0	3257.30	3422.40
8,784.1	5,641.7	194.6					Additive Proppant	Type 20/40 WS		Amount 150,717.0	Units lb Sand Size 20/40	
							Additive Proppant	Type 40/70 WS		Amount 2,602.0	Units lb Sand Size 40/70	
8,971.1	5,646.7	194.6					Stg #	Start Date	Top Depth (ftKB)	Bottom Depth (ftKB)	Vol Clean Pump (bbl)	Vol Slurry (bbl)
							38	9/14/2014	6,448.0	6,577.0	3247.20	3412.90
9,100.1	5,650.4	194.6					Additive Proppant	Type 20/40 WS		Amount 151,134.0	Units lb Sand Size 20/40	
							Additive Proppant	Type 40/70 WS		Amount 2,784.0	Units lb Sand Size 40/70	
9,290.0	5,663.3	194.6					Stg #	Start Date	Top Depth (ftKB)	Bottom Depth (ftKB)	Vol Clean Pump (bbl)	Vol Slurry (bbl)
							39	9/14/2014	6,259.0	6,387.0	3288.40	3451.90
9,412.1	5,671.7	194.6					Additive Proppant	Type 20/40 WS		Amount 148,938.0	Units lb Sand Size 20/40	
							Additive Proppant	Type 40/70 WS		Amount 148,938.0	Units lb Sand Size 20/40	
9,582.0	5,682.2	194.6					Stg #	Start Date	Top Depth (ftKB)	Bottom Depth (ftKB)	Vol Clean Pump (bbl)	Vol Slurry (bbl)
							40	9/14/2014	6,070.0	6,198.0	3247.20	3412.90
9,736.9	5,688.3	194.6					Additive Proppant	Type 20/40 WS		Amount 148,938.0	Units lb Sand Size 20/40	
							Additive Proppant	Type 40/70 WS		Amount 148,938.0	Units lb Sand Size 20/40	
9,868.1	5,688.3	194.6					Stg #	Start Date	Top Depth (ftKB)	Bottom Depth (ftKB)	Vol Clean Pump (bbl)	Vol Slurry (bbl)
							41	9/14/2014	5,900.0	6,028.0	3247.20	3412.90

Page 6/7



Lease Review

Well Name: RAZOR FEDERAL 26L-2303A

API Number	WPC ID	Well Permit Number	Field Name	County	State
051233798900	1CO0761032		DJ Horizontal Niobrara	Weld	CO
Well Configuration Type	Orig KB Elv (ft)	Ground Elevation (ft)	Casing Flange Elevation (ft)	Tubing Head Elevation (ft)	Total Depth (ftKB)
Lateral/Horizontal	4,753.80	4,737.00			13,750.0
Original Spud Date	Completion Date	Asset Group	Responsible Engineer	N/S Dist (ft)	N/S Ref
5/9/2014	9/14/2014	Redtail	Andrew Fish	2,320.0	FSL
				E/W Dist (ft)	E/W Ref
				693.0	FWL
Lot	Quarter 1	Quarter 2	Quarter 3	Quarter 4	Section
	NW	SW			26
					Section Suffix
					Section Type
					Township
					10 N
					Range
					58 W
					Meridian

Lateral/Horizontal - Original Hole, 12/29/2014 11:03:42 AM					Other In Hole					
MD (ftKB)	D (ft KB)	n (ft KB)	Vertical schematic (actual)	Logs	Des		Run Date		Pull Date	
					CFP	OD (in)	4	9/8/2014	10/1/2014	Top (ftKB)
					CFP		4	9/8/2014	10/1/2014	Btm (ftKB)
					CFP		4	9/8/2014	10/1/2014	11,720.0
					CFP		4	9/8/2014	10/1/2014	11,904.0
					CFP		4	9/8/2014	10/1/2014	12,084.0
					CFP		4	9/7/2014	10/1/2014	12,289.0
					CFP		4	9/7/2014	10/1/2014	12,472.0
					CFP		4	9/7/2014	10/1/2014	12,581.0
					CFP		4	9/7/2014	10/1/2014	12,583.0
					CFP		4	9/7/2014	10/1/2014	12,646.0
					CFP		4	9/7/2014	10/1/2014	12,648.0
					CFP		4	9/7/2014	10/1/2014	13,025.0
					CFP		4	9/7/2014	10/1/2014	13,027.0
					CFP		4	9/6/2014	10/1/2014	13,229.0
					CFP		4	9/6/2014	10/1/2014	13,231.0
					CFP		4	9/6/2014	10/1/2014	13,418.0
					CFP		4	9/6/2014	10/1/2014	13,420.0
					Bottom Hole Cores					
					Date	Core #	Top (ftKB)	Btm (ftKB)	Recov (ft)	
22.0	22.0	3.3								
1,472.8	1,474.6	4.5								
1,735.6	1,733.7	5.2								
3,565.0	3,566.3	14.0								
4,782.2	4,770.4	3.8								
4,881.9	4,870.1	3.8								
5,002.6	4,980.8	13.8								
5,569.6	5,465.0	59.3								
5,995.1	5,882.7	84.6								
6,132.9	5,880.9	88.7								
6,261.2	5,881.3	88.3								
6,448.2	5,883.0	89.7								
6,577.1	5,882.4	90.6								
6,759.8	5,881.2	90.1								
6,899.9	5,881.5	90.8								
7,079.1	5,882.7	90.6								
7,207.0	5,883.4	90.6								
7,395.0	5,882.2	90.8								
7,523.0	5,882.0	90.5								
7,710.0	5,882.5	90.3								
7,837.9	5,883.1	90.5								
8,024.9	5,882.5	90.0								
8,152.9	5,882.3	90.0								
8,351.0	5,882.5	90.8								
8,469.2	5,883.4	90.2								
8,655.8	5,884.4	92.9								
8,784.1	5,884.7	87.4								
8,971.1	5,886.7	88.7								
9,100.1	5,885.4	87.0								
9,290.0	5,888.3	90.1								
9,412.1	5,887.3	90.8								
9,582.0	5,888.2	87.3								
9,736.9	5,888.3	87.7								
9,868.1	5,888.3	90.2								
10,045.9	5,888.0	90.0								
10,248.0	5,888.0	90.6								
10,360.9	5,888.1	90.8								
10,535.1	5,888.7	91.7								
10,669.0	5,887.1	91.5								
10,803.1	5,884.0	91.2								
10,990.2	5,883.7	90.5								
11,111.9	5,881.5	91.7								
11,299.9	5,883.8	90.5								
11,433.1	5,886.1	90.5								
11,620.1	5,887.8	90.3								
11,762.1	5,883.0	91.8								
11,936.0	5,886.0	90.3								
12,056.1	5,886.9	90.9								
12,251.0	5,883.8	91.9								
12,379.9	5,884.5	91.7								
12,566.9	5,885.2	91.5								
12,694.9	5,882.0	91.4								
12,881.9	5,887.8	90.8								
12,998.0	5,886.0	90.6								
13,198.2	5,887.2	88.2								
13,326.1	5,887.5	88.7								
13,513.1	5,882.4	90.8								
13,602.7	5,888.0	90.0								
13,654.9	5,884.8	88.7								