

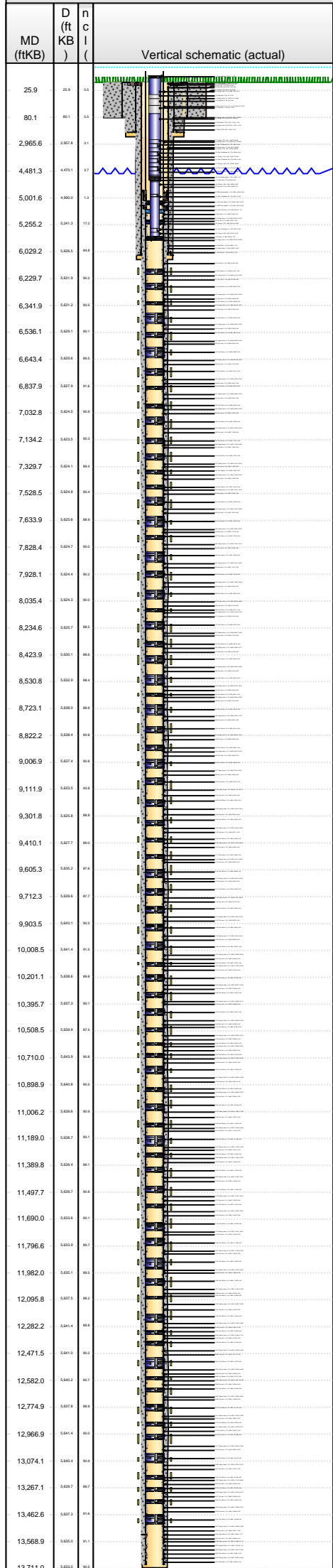


Lease Review

Well Name: RAZOR 26I-2316B

API Number 051233848800	WPC ID 1CO076998	Well Permit Number	Field Name DJ Horizontal Niobrara	County Weld	State CO
Well Configuration Type Lateral/Horizontal	Orig KB Elv (ft) 4,732.00	Ground Elevation (ft) 4,711.00	Casing Flange Elevation (ft)	Tubing Head Elevation (ft)	Total Depth (ftKB) 13,711.0
Original Spud Date 5/7/2014	Completion Date 9/10/2014	Asset Group Redtail	Responsible Engineer Charles Ohlson	N/S Dist (ft) 2,167.0	N/S Ref FSL
				E/W Dist (ft) 663.0	E/W Ref FEL
Lot	Quarter 1 NE	Quarter 2 SE	Quarter 3	Quarter 4	Section 26
			Section Suffix	Section Type	Township 10 N
					Township N/S Dir N
					Range 58
					Range E/W Dir W
					Meridian

Lateral/Horizontal - Original Hole, 12/26/2014 10:58:08 AM



Wellbore Sections

Section Des	Wellbore Name	Start Date	Size (in)	Act Top (ftKB)	Act Btm (ftKB)
Conductor	Original Hole	3/28/2014	24	21.0	80.0
Surface	Original Hole	5/7/2014	13 1/2	80.0	1,581.0
Intermediate	Original Hole	5/9/2014	8 1/2	1,581.0	6,045.0
Lateral	Original Hole	5/11/2014	6 1/8	6,045.0	13,711.0

Conductor Pipe, 80.0ftKB						
OD (in)	Wt (lb/ft)	Grade	Top (ftKB)	Btm (ftKB)	Len (ft)	Item Des
16	65.00	H-40	21.0	80.0	59.00	Casing Joints

Surface Csg, 1,566.2ftKB						
OD (in)	Wt (lb/ft)	Grade	Top (ftKB)	Btm (ftKB)	Len (ft)	Item Des
9 5/8	36.00	J-55	21.0	21.0	0.00	Landing joint
9 5/8	36.00	J-55	21.0	22.0	1.00	well head
9 5/8	36.00	J-55	22.0	26.0	4.00	Pup joint
9 5/8	36.00	J-55	26.0	1,521.6	1,495.57	Casing Joints
9 5/8	36.00	J-55	1,521.6	1,523.1	1.50	Float Collar
9 5/8	36.00	J-55	1,523.1	1,564.7	41.59	Casing Joints
9 5/8	36.00	J-55	1,564.7	1,566.2	1.50	Shoe

Frac String, 5,004.2ftKB						
OD (in)	Wt (lb/ft)	Grade	Top (ftKB)	Btm (ftKB)	Len (ft)	Item Des
			8.8	10.8	1.96	Casing Hanger
4 1/2	11.60	HCP-110	10.8	51.9	41.10	Casing Joints
4 1/2	11.60	HCP-110	51.9	62.6	10.67	Pup Joints, 6', 10', 1.5'
4 1/2	11.60	HCP-110	62.6	4,988.5	4,925.89	Casing Joints
4 1/2	11.60	HCP-110	4,988.5	4,994.7	6.19	Pup Joint
4 1/2			4,994.7	5,004.2	9.50	PBR seal assembly

Intermediate Csg, 6,030.8ftKB						
OD (in)	Wt (lb/ft)	Grade	Top (ftKB)	Btm (ftKB)	Len (ft)	Item Des
7	29.00	29.00	21.0	21.0	0.00	Landing Joint
7			21.0	22.0	1.00	Casing Hanger
7	29.00	29.00	22.0	26.0	4.00	Pup Joint
7	29.00	L-80	26.0	5,985.4	5,959.38	Casing Joints
7			5,985.4	5,986.7	1.30	Float Collar
7	29.00	L-80	5,986.7	6,029.2	42.50	Casing Joints
7			6,029.2	6,030.8	1.60	Guide Shoe

Liner, 13,700.0ftKB						
OD (in)	Wt (lb/ft)	Grade	Top (ftKB)	Btm (ftKB)	Len (ft)	Item Des
4 1/2	11.60	L-80	5,004.2	5,024.9	20.79	ZXP Liner Packer
4 1/2	11.60	L-80	5,024.9	5,031.6	6.67	HMC Liner Hanger
4 1/2	11.60	L-80	5,031.6	5,033.0	1.41	Cross Over Sub
4 1/2	11.60	L-80	5,033.0	5,038.5	5.45	Pup Joint
4 1/2	11.60	L-80	5,038.5	5,253.7	215.18	Casing Joints
4 1/2	11.60	L-80	5,253.7	5,255.2	1.58	Air Lock
4 1/2	11.60	L-80	5,255.2	6,129.0	873.80	Casing Joints
4 1/2	11.60	L-80	6,129.0	6,135.1	6.09	Pup Joint
4 1/2	11.60	L-80	6,135.1	6,141.9	6.81	Frac Sleeve
4 1/2	11.60	L-80	6,141.9	6,229.6	87.63	Casing Joints
4 1/2	11.60	L-80	6,229.6	6,235.7	6.09	Pup Joint
4 1/2	11.60	L-80	6,235.7	6,242.5	6.81	Frac Sleeve
4 1/2	11.60	L-80	6,242.5	6,328.9	86.40	Casing Joints
4 1/2	11.60	L-80	6,328.9	6,335.0	6.09	Pup Joint
4 1/2	11.60	L-80	6,335.0	6,341.8	6.81	Frac Sleeve
4 1/2	11.60	L-80	6,341.8	6,429.4	87.61	Casing Joints
4 1/2	11.60	L-80	6,429.4	6,435.5	6.09	Pup Joint
4 1/2	11.60	L-80	6,435.5	6,442.3	6.81	Frac Sleeve
4 1/2	11.60	L-80	6,442.3	6,529.9	87.62	Casing Joints
4 1/2	11.60	L-80	6,529.9	6,536.0	6.09	Pup Joint
4 1/2	11.60	L-80	6,536.0	6,542.8	6.81	Frac Sleeve
4 1/2	11.60	L-80	6,542.8	6,630.4	87.64	Casing Joints
4 1/2	11.60	L-80	6,630.4	6,636.5	6.09	Pup Joint
4 1/2	11.60	L-80	6,636.5	6,643.3	6.81	Frac Sleeve
4 1/2	11.60	L-80	6,643.3	6,731.0	87.63	Casing Joints
4 1/2	11.60	L-80	6,731.0	6,737.1	6.09	Pup Joint
4 1/2	11.60	L-80	6,737.1	6,743.9	6.81	Frac Sleeve
4 1/2	11.60	L-80	6,743.9	6,831.7	87.84	Casing Joints
4 1/2	11.60	L-80	6,831.7	6,837.8	6.09	Pup Joint
4 1/2	11.60	L-80	6,837.8	6,844.6	6.81	Frac Sleeve
4 1/2	11.60	L-80	6,844.6	6,932.1	87.54	Casing Joints
4 1/2	11.60	L-80	6,932.1	6,938.2	6.09	Pup Joint
4 1/2	11.60	L-80	6,938.2	6,945.0	6.81	Frac Sleeve
4 1/2	11.60	L-80	6,945.0	7,032.7	87.64	Casing Joints



Lease Review

Well Name: RAZOR 26I-2316B

API Number 051233848800	WPC ID 1CO076998	Well Permit Number	Field Name DJ Horizontal Niobrara	County Weld	State CO
Well Configuration Type Lateral/Horizontal	Orig KB Elv (ft) 4,732.00	Ground Elevation (ft) 4,711.00	Casing Flange Elevation (ft)	Tubing Head Elevation (ft)	Total Depth (ftKB) 13,711.0
Original Spud Date 5/7/2014	Completion Date 9/10/2014	Asset Group Redtail	Responsible Engineer Charles Ohlson	N/S Dist (ft) 2,167.0	N/S Ref FSL
				E/W Dist (ft) 663.0	E/W Ref FEL

Lot	Quarter 1 NE	Quarter 2 SE	Quarter 3	Quarter 4	Section 26	Section Suffix	Section Type	Township 10 N	Township N/S Dir	Range 58	Range E/W Dir W	Meridian
-----	-----------------	-----------------	-----------	-----------	---------------	----------------	--------------	------------------	------------------	-------------	--------------------	----------

Lateral/Horizontal - Original Hole, 12/26/2014 10:58:16 AM				OD (in)	Wt (lb/ft)	Grade	Top (ftKB)	Btm (ftKB)	Len (ft)	Item Des	
MD (ftKB)	D (ft KB)	n c l ()	Vertical schematic (actual)	Logs							
					4 1/2	11.60	L-80	7,032.7	7,038.8	6.09	Pup Joint
					4 1/2	11.60	L-80	7,038.8	7,045.6	6.81	Frac Sleeve
					4 1/2	11.60	L-80	7,045.6	7,128.0	82.45	Casing Joints
					4 1/2	11.60	L-80	7,128.0	7,134.1	6.09	Pup Joint
					4 1/2	11.60	L-80	7,134.1	7,140.9	6.81	Frac Sleeve
					4 1/2	11.60	L-80	7,140.9	7,229.0	88.08	Casing Joints
					4 1/2	11.60	L-80	7,229.0	7,235.1	6.09	Pup Joint
					4 1/2	11.60	L-80	7,235.1	7,241.9	6.81	Frac Sleeve
					4 1/2	11.60	L-80	7,241.9	7,329.9	87.95	Casing Joints
					4 1/2	11.60	L-80	7,329.9	7,336.0	6.09	Pup Joint
					4 1/2	11.60	L-80	7,336.0	7,342.8	6.81	Frac Sleeve
					4 1/2	11.60	L-80	7,342.8	7,428.2	85.44	Casing Joints
					4 1/2	11.60	L-80	7,428.2	7,434.3	6.09	Pup Joint
					4 1/2	11.60	L-80	7,434.3	7,441.1	6.81	Frac Sleeve
					4 1/2	11.60	L-80	7,441.1	7,528.7	87.59	Casing Joints
					4 1/2	11.60	L-80	7,528.7	7,534.8	6.09	Pup Joint
					4 1/2	11.60	L-80	7,534.8	7,541.6	6.81	Frac Sleeve
					4 1/2	11.60	L-80	7,541.6	7,627.4	85.80	Casing Joints
					4 1/2	11.60	L-80	7,627.4	7,633.5	6.09	Pup Joint
					4 1/2	11.60	L-80	7,633.5	7,640.3	6.81	Frac Sleeve
					4 1/2	11.60	L-80	7,640.3	7,727.8	87.55	Casing Joints
					4 1/2	11.60	L-80	7,727.8	7,733.9	6.09	Pup Joint
					4 1/2	11.60	L-80	7,733.9	7,740.7	6.81	Frac Sleeve
					4 1/2	11.60	L-80	7,740.7	7,828.5	87.73	Casing Joints
					4 1/2	11.60	L-80	7,828.5	7,834.6	6.09	Pup Joint
					4 1/2	11.60	L-80	7,834.6	7,841.4	6.81	Frac Sleeve
					4 1/2	11.60	L-80	7,841.4	7,921.7	80.35	Casing Joints
					4 1/2	11.60	L-80	7,921.7	7,927.8	6.09	Pup Joint
					4 1/2	11.60	L-80	7,927.8	7,934.6	6.81	Frac Sleeve
					4 1/2	11.60	L-80	7,934.6	8,022.5	87.84	Casing Joints
					4 1/2	11.60	L-80	8,022.5	8,028.6	6.09	Pup Joint
					4 1/2	11.60	L-80	8,028.6	8,035.4	6.81	Frac Sleeve
					4 1/2	11.60	L-80	8,035.4	8,121.0	85.60	Casing Joints
					4 1/2	11.60	L-80	8,121.0	8,127.1	6.09	Pup Joint
					4 1/2	11.60	L-80	8,127.1	8,133.9	6.81	Frac Sleeve
					4 1/2	11.60	L-80	8,133.9	8,221.8	87.90	Casing Joints
					4 1/2	11.60	L-80	8,221.8	8,227.9	6.09	Pup Joint
					4 1/2	11.60	L-80	8,227.9	8,234.7	6.81	Frac Sleeve
					4 1/2	11.60	L-80	8,234.7	8,317.3	82.63	Casing Joints
					4 1/2	11.60	L-80	8,317.3	8,323.4	6.09	Pup Joint
					4 1/2	11.60	L-80	8,323.4	8,330.2	6.81	Frac Sleeve
					4 1/2	11.60	L-80	8,330.2	8,418.0	87.77	Casing Joints
					4 1/2	11.60	L-80	8,418.0	8,424.1	6.09	Pup Joint
					4 1/2	11.60	L-80	8,424.1	8,430.9	6.81	Frac Sleeve
					4 1/2	11.60	L-80	8,430.9	8,518.4	87.56	Casing Joints
					4 1/2	11.60	L-80	8,518.4	8,524.5	6.09	Pup Joint
					4 1/2	11.60	L-80	8,524.5	8,531.3	6.81	Frac Sleeve
					4 1/2	11.60	L-80	8,531.3	8,618.0	86.72	Casing Joints
					4 1/2	11.60	L-80	8,618.0	8,624.1	6.09	Pup Joint
					4 1/2	11.60	L-80	8,624.1	8,630.9	6.81	Frac Sleeve
					4 1/2	11.60	L-80	8,630.9	8,716.4	85.50	Casing Joints
					4 1/2	11.60	L-80	8,716.4	8,722.5	6.09	Pup Joint
					4 1/2	11.60	L-80	8,722.5	8,729.3	6.81	Frac Sleeve
					4 1/2	11.60	L-80	8,729.3	8,809.1	79.78	Casing Joints
					4 1/2	11.60	L-80	8,809.1	8,815.2	6.09	Pup Joint
					4 1/2	11.60	L-80	8,815.2	8,822.0	6.81	Frac Sleeve
					4 1/2	11.60	L-80	8,822.0	8,900.0	78.01	Casing Joints
					4 1/2	11.60	L-80	8,900.0	8,906.1	6.09	Pup Joint
					4 1/2	11.60	L-80	8,906.1	8,912.9	6.81	Frac Sleeve
					4 1/2	11.60	L-80	8,912.9	9,000.5	87.54	Casing Joints
					4 1/2	11.60	L-80	9,000.5	9,006.6	6.09	Pup Joint
					4 1/2	11.60	L-80	9,006.6	9,013.4	6.81	Frac Sleeve
					4 1/2	11.60	L-80	9,013.4	9,098.6	85.27	Casing Joints
					4 1/2	11.60	L-80	9,098.6	9,104.7	6.09	Pup Joint
					4 1/2	11.60	L-80	9,104.7	9,111.5	6.81	Frac Sleeve
					4 1/2	11.60	L-80	9,111.5	9,199.3	87.77	Casing Joints
					4 1/2	11.60	L-80	9,199.3	9,205.4	6.09	Pup Joint
					4 1/2	11.60	L-80	9,205.4	9,212.2	6.81	Frac Sleeve
					4 1/2	11.60	L-80	9,212.2	9,296.4	84.14	Casing Joints
					4 1/2	11.60	L-80	9,296.4	9,302.4	6.09	Pup Joint
					4 1/2	11.60	L-80	9,302.4	9,309.3	6.81	Frac Sleeve



Lease Review

Well Name: RAZOR 26I-2316B

API Number 051233848800	WPC ID 1CO076998	Well Permit Number	Field Name DJ Horizontal Niobrara	County Weld	State CO
Well Configuration Type Lateral/Horizontal	Orig KB Elv (ft) 4,732.00	Ground Elevation (ft) 4,711.00	Casing Flange Elevation (ft)	Tubing Head Elevation (ft)	Total Depth (ftKB) 13,711.0
Original Spud Date 5/7/2014	Completion Date 9/10/2014	Asset Group Redtail	Responsible Engineer Charles Ohlson	N/S Dist (ft) 2,167.0	N/S Ref FSL
				E/W Dist (ft) 663.0	E/W Ref FEL

Lot	Quarter 1 NE	Quarter 2 SE	Quarter 3	Quarter 4	Section 26	Section Suffix	Section Type	Township 10 N	Township N/S Dir	Range 58	Range E/W Dir W	Meridian
-----	-----------------	-----------------	-----------	-----------	---------------	----------------	--------------	------------------	------------------	-------------	--------------------	----------

Lateral/Horizontal - Original Hole, 12/26/2014 10:58:23 AM

MD (ftKB)	D (ft KB)	n c l	Vertical schematic (actual)	Logs	OD (in)	Wt (lb/ft)	Grade	Top (ftKB)	Btm (ftKB)	Len (ft)	Item Des
					4 1/2	11.60	L-80	9,309.3	9,397.1	87.83	Casing Joints
					4 1/2	11.60	L-80	9,397.1	9,403.2	6.09	Pup Joint
					4 1/2	11.60	L-80	9,403.2	9,410.0	6.81	Frac Sleeve
					4 1/2	11.60	L-80	9,410.0	9,498.3	88.29	Casing Joints
					4 1/2	11.60	L-80	9,498.3	9,504.4	6.09	Pup Joint
					4 1/2	11.60	L-80	9,504.4	9,511.2	6.81	Frac Sleeve
					4 1/2	11.60	L-80	9,511.2	9,599.3	88.16	Casing Joints
					4 1/2	11.60	L-80	9,599.3	9,605.4	6.09	Pup Joint
					4 1/2	11.60	L-80	9,605.4	9,612.2	6.81	Frac Sleeve
					4 1/2	11.60	L-80	9,612.2	9,699.3	87.09	Casing Joints
					4 1/2	11.60	L-80	9,699.3	9,705.4	6.09	Pup Joint
					4 1/2	11.60	L-80	9,705.4	9,712.2	6.81	Frac Sleeve
					4 1/2	11.60	L-80	9,712.2	9,797.3	85.09	Casing Joints
					4 1/2	11.60	L-80	9,797.3	9,803.4	6.09	Pup Joint
					4 1/2	11.60	L-80	9,803.4	9,810.2	6.81	Frac Sleeve
					4 1/2	11.60	L-80	9,810.2	9,897.6	87.35	Casing Joints
					4 1/2	11.60	L-80	9,897.6	9,903.7	6.09	Pup Joint
					4 1/2	11.60	L-80	9,903.7	9,910.5	6.81	Frac Sleeve
					4 1/2	11.60	L-80	9,910.5	9,995.6	85.12	Casing Joints
					4 1/2	11.60	L-80	9,995.6	10,001.7	6.09	Pup Joint
					4 1/2	11.60	L-80	10,001.7	10,008.5	6.81	Frac Sleeve
					4 1/2	11.60	L-80	10,008.5	10,094.0	85.49	Casing Joints
					4 1/2	11.60	L-80	10,094.0	10,100.1	6.09	Pup Joint
					4 1/2	11.60	L-80	10,100.1	10,106.9	6.81	Frac Sleeve
					4 1/2	11.60	L-80	10,106.9	10,194.8	87.94	Casing Joints
					4 1/2	11.60	L-80	10,194.8	10,200.9	6.09	Pup Joint
					4 1/2	11.60	L-80	10,200.9	10,207.7	6.81	Frac Sleeve
					4 1/2	11.60	L-80	10,207.7	10,295.6	87.93	Casing Joints
					4 1/2	11.60	L-80	10,295.6	10,301.7	6.09	Pup Joint
					4 1/2	11.60	L-80	10,301.7	10,308.5	6.81	Frac Sleeve
					4 1/2	11.60	L-80	10,308.5	10,395.7	87.11	Casing Joints
					4 1/2	11.60	L-80	10,395.7	10,401.7	6.09	Pup Joint
					4 1/2	11.60	L-80	10,401.7	10,408.6	6.81	Frac Sleeve
					4 1/2	11.60	L-80	10,408.6	10,495.8	87.24	Casing Joints
					4 1/2	11.60	L-80	10,495.8	10,501.9	6.09	Pup Joint
					4 1/2	11.60	L-80	10,501.9	10,508.7	6.81	Frac Sleeve
					4 1/2	11.60	L-80	10,508.7	10,596.0	87.34	Casing Joints
					4 1/2	11.60	L-80	10,596.0	10,602.1	6.09	Pup Joint
					4 1/2	11.60	L-80	10,602.1	10,608.9	6.81	Frac Sleeve
					4 1/2	11.60	L-80	10,608.9	10,696.9	88.01	Casing Joints
					4 1/2	11.60	L-80	10,696.9	10,703.0	6.09	Pup Joint
					4 1/2	11.60	L-80	10,703.0	10,709.8	6.81	Frac Sleeve
					4 1/2	11.60	L-80	10,709.8	10,792.4	82.55	Casing Joints
					4 1/2	11.60	L-80	10,792.4	10,798.5	6.09	Pup Joint
					4 1/2	11.60	L-80	10,798.5	10,805.3	6.81	Frac Sleeve
					4 1/2	11.60	L-80	10,805.3	10,893.1	87.80	Casing Joints
					4 1/2	11.60	L-80	10,893.1	10,899.2	6.09	Pup Joint
					4 1/2	11.60	L-80	10,899.2	10,906.0	6.81	Frac Sleeve
					4 1/2	11.60	L-80	10,906.0	10,993.3	87.33	Casing Joints
					4 1/2	11.60	L-80	10,993.3	10,999.4	6.09	Pup Joint
					4 1/2	11.60	L-80	10,999.4	11,006.2	6.81	Frac Sleeve
					4 1/2	11.60	L-80	11,006.2	11,086.1	79.85	Casing Joints
					4 1/2	11.60	L-80	11,086.1	11,092.2	6.09	Pup Joint
					4 1/2	11.60	L-80	11,092.2	11,099.0	6.81	Frac Sleeve
					4 1/2	11.60	L-80	11,099.0	11,182.4	83.40	Casing Joints
					4 1/2	11.60	L-80	11,182.4	11,188.5	6.09	Pup Joint
					4 1/2	11.60	L-80	11,188.5	11,195.3	6.81	Frac Sleeve
					4 1/2	11.60	L-80	11,195.3	11,283.1	87.84	Casing Joints
					4 1/2	11.60	L-80	11,283.1	11,289.2	6.09	Pup Joint
					4 1/2	11.60	L-80	11,289.2	11,296.0	6.81	Frac Sleeve
					4 1/2	11.60	L-80	11,296.0	11,383.8	87.78	Casing Joints
					4 1/2	11.60	L-80	11,383.8	11,389.9	6.09	Pup Joint
					4 1/2	11.60	L-80	11,389.9	11,396.7	6.81	Frac Sleeve
					4 1/2	11.60	L-80	11,396.7	11,484.8	88.11	Casing Joints
					4 1/2	11.60	L-80	11,484.8	11,490.9	6.09	Pup Joint
					4 1/2	11.60	L-80	11,490.9	11,497.7	6.81	Frac Sleeve
					4 1/2	11.60	L-80	11,497.7	11,585.8	88.14	Casing Joints
					4 1/2	11.60	L-80	11,585.8	11,591.9	6.09	Pup Joint
					4 1/2	11.60	L-80	11,591.9	11,598.7	6.81	Frac Sleeve
					4 1/2	11.60	L-80	11,598.7	11,684.3	85.51	Casing Joints
					4 1/2	11.60	L-80	11,684.3	11,690.3	6.09	Pup Joint



Lease Review

Well Name: RAZOR 26I-2316B

API Number 051233848800		WPC ID 1CO076998		Well Permit Number		Field Name DJ Horizontal Niobrara		County Weld		State CO		
Well Configuration Type Lateral/Horizontal			Orig KB Elv (ft) 4,732.00		Ground Elevation (ft) 4,711.00		Casing Flange Elevation (ft)		Tubing Head Elevation (ft)		Total Depth (ftKB) 13,711.0	
Original Spud Date 5/7/2014		Completion Date 9/10/2014		Asset Group Redtail		Responsible Engineer Charles Ohlson		N/S Dist (ft) 2,167.0		N/S Ref FSL	E/W Dist (ft) 663.0	E/W Ref FEL
Lot	Quarter 1 NE	Quarter 2 SE	Quarter 3	Quarter 4	Section 26	Section Suffix	Section Type	Township 10 N	Township N/S Dir	Range 58	Range E/W Dir W	Meridian

Lateral/Horizontal - Original Hole, 12/26/2014 10:58:29 AM				OD (in)	Wt (lb/ft)	Grade	Top (ftKB)	Btm (ftKB)	Len (ft)	Item Des	
MD (ftKB)	D (ft KB)	nc l ()	Vertical schematic (actual)	Logs	4 1/2	11.60	L-80	11,690.3	11,697.2	6.81	Frac Sleeve
					4 1/2	11.60	L-80	11,697.2	11,783.6	86.41	Casing Joints
					4 1/2	11.60	L-80	11,783.6	11,789.7	6.09	Pup Joint
25.9	25.9	11.5			4 1/2	11.60	L-80	11,789.7	11,796.5	6.81	Frac Sleeve
				4 1/2	11.60	L-80	11,796.5	11,884.5	87.99	Casing Joints	
80.1	80.1	11.5		4 1/2	11.60	L-80	11,884.5	11,890.5	6.09	Pup Joint	
2,965.6	2,965.6	11.1		4 1/2	11.60	L-80	11,890.5	11,897.4	6.81	Frac Sleeve	
4,481.3	4,481.3	11.7		4 1/2	11.60	L-80	11,897.4	11,982.0	84.62	Casing Joints	
				4 1/2	11.60	L-80	11,982.0	11,988.1	6.09	Pup Joint	
5,001.6	5,001.6	11.3		4 1/2	11.60	L-80	11,988.1	11,994.9	6.81	Frac Sleeve	
5,255.2	5,255.2	11.2		4 1/2	11.60	L-80	11,994.9	12,082.8	87.93	Casing Joints	
6,029.2	6,029.2	11.6		4 1/2	11.60	L-80	12,082.8	12,088.9	6.09	Pup Joint	
6,229.7	6,229.7	11.2		4 1/2	11.60	L-80	12,088.9	12,095.7	6.81	Frac Sleeve	
6,341.9	6,341.9	11.5		4 1/2	11.60	L-80	12,095.7	12,183.4	87.65	Casing Joints	
6,536.1	6,536.1	11.1		4 1/2	11.60	L-80	12,183.4	12,189.4	6.09	Pup Joint	
6,643.4	6,643.4	11.6		4 1/2	11.60	L-80	12,189.4	12,196.3	6.81	Frac Sleeve	
6,837.9	6,837.9	11.6		4 1/2	11.60	L-80	12,196.3	12,282.1	85.83	Casing Joints	
7,032.8	7,032.8	11.6		4 1/2	11.60	L-80	12,282.1	12,288.2	6.09	Pup Joint	
7,134.2	7,134.2	11.6		4 1/2	11.60	L-80	12,288.2	12,295.0	6.81	Frac Sleeve	
7,329.7	7,329.7	11.6		4 1/2	11.60	L-80	12,295.0	12,372.9	77.91	Casing Joints	
7,528.5	7,528.5	11.6		4 1/2	11.60	L-80	12,372.9	12,379.0	6.09	Pup Joint	
7,633.9	7,633.9	11.6		4 1/2	11.60	L-80	12,379.0	12,385.8	6.81	Frac Sleeve	
7,828.4	7,828.4	11.6		4 1/2	11.60	L-80	12,385.8	12,471.5	85.69	Casing Joints	
7,928.1	7,928.1	11.6		4 1/2	11.60	L-80	12,471.5	12,477.6	6.09	Pup Joint	
8,035.4	8,035.4	11.6		4 1/2	11.60	L-80	12,477.6	12,484.4	6.81	Frac Sleeve	
8,234.6	8,234.6	11.6		4 1/2	11.60	L-80	12,484.4	12,569.0	84.66	Casing Joints	
8,423.9	8,423.9	11.6		4 1/2	11.60	L-80	12,569.0	12,575.1	6.09	Pup Joint	
8,530.8	8,530.8	11.6		4 1/2	11.60	L-80	12,575.1	12,581.9	6.81	Frac Sleeve	
8,723.1	8,723.1	11.6		4 1/2	11.60	L-80	12,581.9	12,669.9	87.96	Casing Joints	
8,822.2	8,822.2	11.6		4 1/2	11.60	L-80	12,669.9	12,676.0	6.09	Pup Joint	
9,006.9	9,006.9	11.6		4 1/2	11.60	L-80	12,676.0	12,682.8	6.81	Frac Sleeve	
9,111.9	9,111.9	11.6	4 1/2	11.60	L-80	12,682.8	12,768.6	85.82	Casing Joints		
9,301.8	9,301.8	11.6	4 1/2	11.60	L-80	12,768.6	12,774.7	6.09	Pup Joint		
9,410.1	9,410.1	11.6	4 1/2	11.60	L-80	12,774.7	12,781.5	6.81	Frac Sleeve		
9,605.3	9,605.3	11.6	4 1/2	11.60	L-80	12,781.5	12,860.1	78.56	Casing Joints		
9,712.3	9,712.3	11.6	4 1/2	11.60	L-80	12,860.1	12,866.2	6.09	Pup Joint		
9,903.5	9,903.5	11.6	4 1/2	11.60	L-80	12,866.2	12,873.0	6.81	Frac Sleeve		
10,008.5	10,008.5	11.6	4 1/2	11.60	L-80	12,873.0	12,960.7	87.71	Casing Joints		
10,201.1	10,201.1	11.6	4 1/2	11.60	L-80	12,960.7	12,966.8	6.09	Pup Joint		
10,395.7	10,395.7	11.6	4 1/2	11.60	L-80	12,966.8	12,973.6	6.81	Frac Sleeve		
10,508.5	10,508.5	11.6	4 1/2	11.60	L-80	12,973.6	13,061.4	87.84	Casing Joints		
10,710.0	10,710.0	11.6	4 1/2	11.60	L-80	13,061.4	13,067.5	6.09	Pup Joint		
10,898.9	10,898.9	11.6	4 1/2	11.60	L-80	13,067.5	13,074.3	6.81	Frac Sleeve		
11,006.2	11,006.2	11.6	4 1/2	11.60	L-80	13,074.3	13,162.1	87.76	Casing Joints		
11,189.0	11,189.0	11.6	4 1/2	11.60	L-80	13,162.1	13,168.2	6.09	Pup Joint		
11,389.8	11,389.8	11.6	4 1/2	11.60	L-80	13,168.2	13,175.0	6.81	Frac Sleeve		
11,497.7	11,497.7	11.6	4 1/2	11.60	L-80	13,175.0	13,260.9	85.93	Casing Joints		
11,690.0	11,690.0	11.6	4 1/2	11.60	L-80	13,260.9	13,267.0	6.09	Pup Joint		
11,796.6	11,796.6	11.6	4 1/2	11.60	L-80	13,267.0	13,273.8	6.81	Frac Sleeve		
11,982.0	11,982.0	11.6	4 1/2	11.60	L-80	13,273.8	13,355.9	82.12	Casing Joints		
12,095.8	12,095.8	11.6	4 1/2	11.60	L-80	13,355.9	13,362.0	6.09	Pup Joint		
12,282.2	12,282.2	11.6	4 1/2	11.60	L-80	13,362.0	13,368.8	6.81	Frac Sleeve		
12,471.5	12,471.5	11.6	4 1/2	11.60	L-80	13,368.8	13,456.5	87.67	Casing Joints		
12,582.0	12,582.0	11.6	4 1/2	11.60	L-80	13,456.5	13,462.6	6.09	Pup Joint		
12,774.9	12,774.9	11.6	4 1/2	11.60	L-80	13,462.6	13,469.4	6.81	Frac Sleeve		
12,966.9	12,966.9	11.6	4 1/2	11.60	L-80	13,469.4	13,557.1	87.66	Casing Joints		
13,074.1	13,074.1	11.6	4 1/2	11.60	L-80	13,557.1	13,563.2	6.08	Pup Joint		
13,267.1	13,267.1	11.6	4 1/2	11.60	L-80	13,563.2	13,566.9	3.73	Alpha Sleeve		
13,462.6	13,462.6	11.6	4 1/2	11.60	L-80	13,566.9	13,568.9	2.04	Pup Joint		
13,568.9	13,568.9	11.6	4 1/2	11.60	L-80	13,568.9	13,610.6	41.72	Casing Joints		
13,711.0	13,711.0	11.6	4 1/2	11.60	L-80	13,610.6	13,612.2	1.59	Landing Collar		
			4 1/2	11.60	L-80	13,612.2	13,656.1	43.84	Casing Joints		
			4 1/2	11.60	L-80	13,656.1	13,657.0	0.97	Float Collar		
			4 1/2	11.60	L-80	13,657.0	13,697.5	40.44	Casing Joints		
			4 1/2	11.60	L-80	13,697.5	13,700.0	2.52	Float Shoe		

Cement Stages					
Des	Pump Start Date	Drill Out Date	Top (ftKB)	Btm (ftKB)	Top Meas Meth
Conductor Cement	3/28/2014		21.0	80.0	Returns to Surface
Surface Casing Cement	5/8/2014		21.0	1,566.2	Returns to Surface

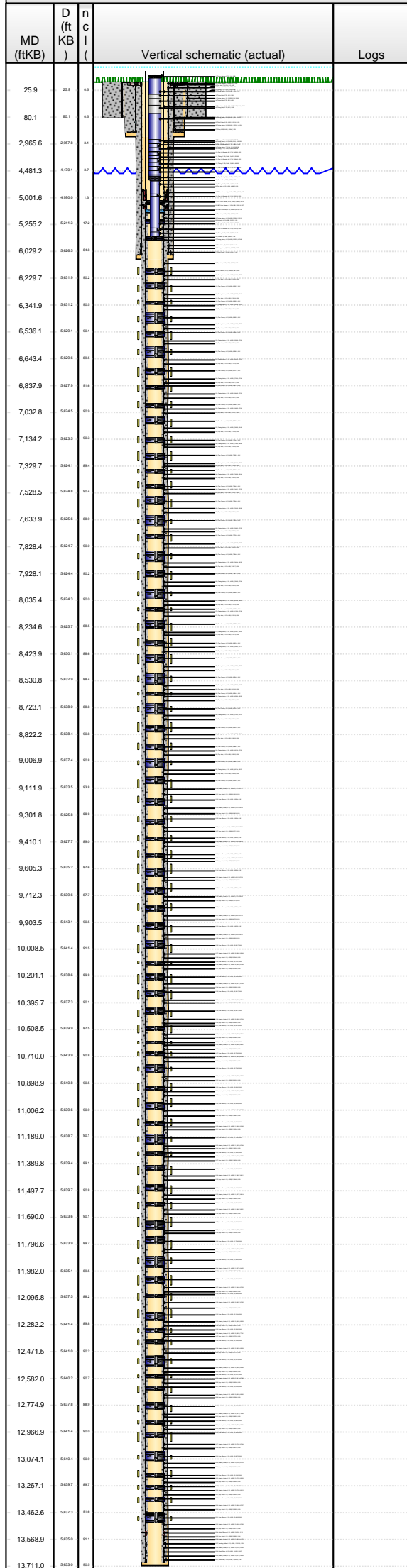


Lease Review

Well Name: RAZOR 26I-2316B

API Number 051233848800	WPC ID 1CO076998	Well Permit Number	Field Name DJ Horizontal Niobrara	County Weld	State CO
Well Configuration Type Lateral/Horizontal	Orig KB Elv (ft) 4,732.00	Ground Elevation (ft) 4,711.00	Casing Flange Elevation (ft)	Tubing Head Elevation (ft)	Total Depth (ftKB) 13,711.0
Original Spud Date 5/7/2014	Completion Date 9/10/2014	Asset Group Redtail	Responsible Engineer Charles Ohlson	N/S Dist (ft) 2,167.0	N/S Ref FSL
				E/W Dist (ft) 663.0	E/W Ref FEL
Lot	Quarter 1 NE	Quarter 2 SE	Quarter 3	Quarter 4	Section 26
			Section Suffix	Section Type	Township 10 N
					Township N/S Dir N
					Range 58 W
					Range E/W Dir W
					Meridian

Lateral/Horizontal - Original Hole, 12/26/2014 10:58:35 AM



Cement Stages

Des	Pump Start Date	Drill Out Date	Top (ftKB)	Btm (ftKB)	Top Meas Meth
Intermediate Casing Cement	5/11/2014		21.0	6,030.8	Returns to Surface
Liner Cement	5/20/2014		5,004.2	13,700.0	Returns to Surface

Perforations

Type of Hole	Date	Top (ftKB)	Btm (ftKB)	Zone

Sand Frac on 9/2/2014 06:00

Comment	Min Top De...	Max Btm D...	Frac Length (ft)
Treatment End Date: 9/10/2014; Number of staged intervals: 75; Min frac gradient: 0.773 psi/ft; Number of sleeves: 75; Total 15% HCl used: 924 bbl; 75220 bbl QuadraFrac XL Gel, 20526 bbl QuadraFrac Linear Gel, 41546 bbl Slickwater	6,135.0	13,469.0	

Stim/Treat Fluids

QuadraFrac XL Gel; Linear Gel; 15% HCL, <fluidtyp>						
Proppant Fm (lb)	Total Clean Vol...	Avg Treat Rate...	Max Treat Rate...	Avg Treat Press...	P Max (psi)	Frac Gradient (p...
5,965,749.5	138217.50	21.70	24.40	4,910.0	6,698.0	0.77

Stim/Treat Stages

Stg #	Start Date	Top Depth (ftKB)	Bottom Depth (ftKB)	Vol Clean Pump (bbl)	Vol Slurry (bbl)
1	9/2/2014	13,463.0	13,469.0	0.00	0.00
Additive		Type	Amount	Units	Sand Size
2	9/2/2014	13,362.0	13,369.0	0.00	0.00
Additive		Type	Amount	Units	Sand Size
3	9/2/2014	13,267.0	13,274.0	1953.50	2008.30
Additive		Type	Amount	Units	Sand Size
Proppant		20/40 WS	48,906.9	lb	20/40
Additive		Type	Amount	Units	Sand Size
Proppant		40/70 WS	1,990.9	lb	40/70
4	9/3/2014	13,168.0	13,175.0	355.50	355.50
Additive		Type	Amount	Units	Sand Size
5	9/3/2014	13,068.0	13,074.0	1697.90	1754.50
Additive		Type	Amount	Units	Sand Size
Proppant		20/40 WS	49,681.4	lb	20/40
Additive		Type	Amount	Units	Sand Size
Proppant		40/70 WS	2,910.6	lb	40/70
6	9/3/2014	12,967.0	12,974.0	2528.40	2618.50
Additive		Type	Amount	Units	Sand Size
Proppant		20/40 WS	81,577.8	lb	20/40
Additive		Type	Amount	Units	Sand Size
Proppant		40/70 WS	2,080.6	lb	40/70
7	9/3/2014	12,866.0	12,873.0	1919.00	2012.10
Additive		Type	Amount	Units	Sand Size
Proppant		20/40 WS	84,277.5	lb	20/40
Additive		Type	Amount	Units	Sand Size
Proppant		40/70 WS	2,158.1	lb	40/70
8	9/3/2014	12,775.0	12,782.0	2114.60	2203.00
Additive		Type	Amount	Units	Sand Size
Proppant		20/40 WS	79,974.4	lb	20/40
Additive		Type	Amount	Units	Sand Size
Proppant		40/70 WS	2,159.2	lb	40/70
9	9/3/2014	12,676.0	12,683.0	1912.10	2000.80
Additive		Type	Amount	Units	Sand Size
Proppant		20/40 WS	80,268.7	lb	20/40
Additive		Type	Amount	Units	Sand Size
Proppant		40/70 WS	2,159.2	lb	40/70
10	9/3/2014	12,575.0	12,582.0	1909.90	2001.50
Additive		Type	Amount	Units	Sand Size
Proppant		20/40 WS	83,003.7	lb	20/40
Additive		Type	Amount	Units	Sand Size
Proppant		40/70 WS	2,038.5	lb	40/70
11	9/3/2014	12,478.0	12,484.0	1890.50	1980.00
Additive		Type	Amount	Units	Sand Size
Proppant		20/40 WS	80,858.8	lb	20/40
Additive		Type	Amount	Units	Sand Size
Proppant		40/70 WS	2,232.2	lb	40/70
12	9/5/2014	12,379.0	12,386.0	1913.10	2004.80
Additive		Type	Amount	Units	Sand Size
Proppant		20/40 WS	83,016.8	lb	20/40
Additive		Type	Amount	Units	Sand Size
Proppant		40/70 WS	2,142.6	lb	40/70
13	9/5/2014	12,288.0	12,295.0	1909.00	1997.40
Additive		Type	Amount	Units	Sand Size
Proppant		20/40 WS	79,921.0	lb	20/40
Additive		Type	Amount	Units	Sand Size
Proppant		40/70 WS	2,227.8	lb	40/70
14	9/5/2014	12,189.0	12,196.0	1924.00	2006.70
Additive		Type	Amount	Units	Sand Size
Proppant		20/40 WS	79,921.0	lb	20/40
Additive		Type	Amount	Units	Sand Size
Proppant		40/70 WS	2,227.8	lb	40/70



Lease Review

Well Name: RAZOR 26I-2316B

API Number 051233848800	WPC ID 1CO076998	Well Permit Number	Field Name DJ Horizontal Niobrara	County Weld	State CO
Well Configuration Type Lateral/Horizontal	Orig KB Elv (ft) 4,732.00	Ground Elevation (ft) 4,711.00	Casing Flange Elevation (ft)	Tubing Head Elevation (ft)	Total Depth (ftKB) 13,711.0
Original Spud Date 5/7/2014	Completion Date 9/10/2014	Asset Group Redtail	Responsible Engineer Charles Ohlson	N/S Dist (ft) 2,167.0	N/S Ref FSL
				E/W Dist (ft) 663.0	E/W Ref FEL
Lot	Quarter 1 NE	Quarter 2 SE	Quarter 3	Quarter 4	Section 26
			Section Suffix	Section Type	Township 10 N
					Township N/S Dir N
					Range 58 W
					Range E/W Dir W
					Meridian

Lateral/Horizontal - Original Hole, 12/26/2014 10:58:40 AM					
MD (ftKB)	D (ft KB)	n c l ()	Vertical schematic (actual)	Logs	
					Additive Proppant Type 20/40 WS Amount 74,736.5 Units lb Sand Size 20/40
					Additive Proppant Type 40/70 WS Amount 2,101.6 Units lb Sand Size 40/70
					Stg # 15 Start Date 9/5/2014 Top Depth (ftKB) 12,089.0 Bottom Depth (ftKB) 12,096.0 Vol Clean Pump (bbl) 2360.40 Vol Slurry (bbl) 2449.70
25.9	25.9	11.5			Additive Proppant Type 20/40 WS Amount 80,985.9 Units lb Sand Size 20/40
80.1	80.1	11.5			Additive Proppant Type 40/70 WS Amount 1,997.6 Units lb Sand Size 40/70
2,965.6	2,965.6	11.5			Stg # 16 Start Date 9/5/2014 Top Depth (ftKB) 11,988.0 Bottom Depth (ftKB) 11,995.0 Vol Clean Pump (bbl) 1920.50 Vol Slurry (bbl) 2017.00
4,481.3	4,481.3	11.5			Additive Proppant Type 20/40 WS Amount 87,453.0 Units lb Sand Size 20/40
5,001.6	5,001.6	11.5			Additive Proppant Type 40/70 WS Amount 2,164.7 Units lb Sand Size 40/70
5,255.2	5,255.2	11.5			Stg # 17 Start Date 9/5/2014 Top Depth (ftKB) 11,891.0 Bottom Depth (ftKB) 11,897.0 Vol Clean Pump (bbl) 1925.30 Vol Slurry (bbl) 2012.50
6,029.2	6,029.2	11.5			Additive Proppant Type 20/40 WS Amount 78,922.6 Units lb Sand Size 20/40
6,229.7	6,229.7	11.5			Additive Proppant Type 40/70 WS Amount 2,091.7 Units lb Sand Size 40/70
6,341.9	6,341.9	11.5			Stg # 18 Start Date 9/5/2014 Top Depth (ftKB) 11,790.0 Bottom Depth (ftKB) 11,797.0 Vol Clean Pump (bbl) 2105.70 Vol Slurry (bbl) 2195.20
6,536.1	6,536.1	11.5			Additive Proppant Type 20/40 WS Amount 81,111.8 Units lb Sand Size 20/40
6,643.4	6,643.4	11.5			Additive Proppant Type 40/70 WS Amount 2,025.3 Units lb Sand Size 40/70
6,837.9	6,837.9	11.5			Stg # 19 Start Date 9/5/2014 Top Depth (ftKB) 11,690.0 Bottom Depth (ftKB) 11,697.0 Vol Clean Pump (bbl) 1923.30 Vol Slurry (bbl) 2015.70
7,032.8	7,032.8	11.5			Additive Proppant Type 20/40 WS Amount 83,757.0 Units lb Sand Size 20/40
7,134.2	7,134.2	11.5			Additive Proppant Type 40/70 WS Amount 2,101.6 Units lb Sand Size 40/70
7,329.7	7,329.7	11.5			Stg # 20 Start Date 9/5/2014 Top Depth (ftKB) 11,592.0 Bottom Depth (ftKB) 11,599.0 Vol Clean Pump (bbl) 1915.30 Vol Slurry (bbl) 2004.60
7,528.5	7,528.5	11.5			Additive Proppant Type 20/40 WS Amount 80,759.8 Units lb Sand Size 20/40
7,633.9	7,633.9	11.5			Additive Proppant Type 40/70 WS Amount 2,204.5 Units lb Sand Size 40/70
7,828.4	7,828.4	11.5			Stg # 21 Start Date 9/5/2014 Top Depth (ftKB) 11,491.0 Bottom Depth (ftKB) 11,498.0 Vol Clean Pump (bbl) 1889.10 Vol Slurry (bbl) 1979.30
7,928.1	7,928.1	11.5			Additive Proppant Type 20/40 WS Amount 81,728.0 Units lb Sand Size 20/40
8,035.4	8,035.4	11.5			Additive Proppant Type 40/70 WS Amount 2,065.1 Units lb Sand Size 40/70
8,234.6	8,234.6	11.5			Stg # 22 Start Date 9/5/2014 Top Depth (ftKB) 11,390.0 Bottom Depth (ftKB) 11,397.0 Vol Clean Pump (bbl) 1907.20 Vol Slurry (bbl) 1998.00
8,423.9	8,423.9	11.5			Additive Proppant Type 20/40 WS Amount 82,140.5 Units lb Sand Size 20/40
8,530.8	8,530.8	11.5			Additive Proppant Type 40/70 WS Amount 2,232.2 Units lb Sand Size 40/70
8,723.1	8,723.1	11.5			Stg # 23 Start Date 9/5/2014 Top Depth (ftKB) 11,289.0 Bottom Depth (ftKB) 11,296.0 Vol Clean Pump (bbl) 1941.30 Vol Slurry (bbl) 2032.10
8,822.2	8,822.2	11.5			Additive Proppant Type 20/40 WS Amount 82,257.6 Units lb Sand Size 20/40
9,006.9	9,006.9	11.5			Additive Proppant Type 40/70 WS Amount 2,061.8 Units lb Sand Size 40/70
9,111.9	9,111.9	11.5			Stg # 24 Start Date 9/5/2014 Top Depth (ftKB) 11,189.0 Bottom Depth (ftKB) 11,195.0 Vol Clean Pump (bbl) 1905.60 Vol Slurry (bbl) 1996.50
9,301.8	9,301.8	11.5			Additive Proppant Type 20/40 WS Amount 82,302.9 Units lb Sand Size 20/40
9,410.1	9,410.1	11.5			Additive Proppant Type 40/70 WS Amount 2,127.1 Units lb Sand Size 40/70
9,605.3	9,605.3	11.5			Stg # 25 Start Date 9/6/2014 Top Depth (ftKB) 11,092.0 Bottom Depth (ftKB) 11,099.0 Vol Clean Pump (bbl) 1885.60 Vol Slurry (bbl) 1976.10
9,712.3	9,712.3	11.5			Additive Proppant Type 20/40 WS Amount 81,944.9 Units lb Sand Size 20/40
9,903.5	9,903.5	11.5			Additive Proppant Type 40/70 WS Amount 2,135.9 Units lb Sand Size 40/70
10,008.5	10,008.5	11.5			Stg # 26 Start Date 9/6/2014 Top Depth (ftKB) 10,999.0 Bottom Depth (ftKB) 11,006.0 Vol Clean Pump (bbl) 1872.00 Vol Slurry (bbl) 1962.90
10,201.1	10,201.1	11.5			Additive Proppant Type 20/40 WS Amount 82,250.5 Units lb Sand Size 20/40
10,395.7	10,395.7	11.5			Additive Proppant Type 40/70 WS Amount 2,181.3 Units lb Sand Size 40/70
10,508.5	10,508.5	11.5			Stg # 27 Start Date 9/6/2014 Top Depth (ftKB) 10,899.0 Bottom Depth (ftKB) 10,906.0 Vol Clean Pump (bbl) 1911.40 Vol Slurry (bbl) 2000.90
10,710.0	10,710.0	11.5			Additive Proppant Type 20/40 WS Amount 81,189.7 Units lb Sand Size 20/40
10,898.9	10,898.9	11.5			Additive Proppant Type 40/70 WS Amount 1,950.0 Units lb Sand Size 40/70
11,006.2	11,006.2	11.5			Stg # 28 Start Date 9/6/2014 Top Depth (ftKB) 10,799.0 Bottom Depth (ftKB) 10,805.0 Vol Clean Pump (bbl) 1899.90 Vol Slurry (bbl) 1990.00
11,189.0	11,189.0	11.5			Additive Proppant Type 20/40 WS Amount 81,478.0 Units lb Sand Size 20/40
11,389.8	11,389.8	11.5			Additive Proppant Type 40/70 WS Amount 2,172.4 Units lb Sand Size 40/70
11,497.7	11,497.7	11.5			Stg # 29 Start Date 9/6/2014 Top Depth (ftKB) 10,703.0 Bottom Depth (ftKB) 10,710.0 Vol Clean Pump (bbl) 1878.80 Vol Slurry (bbl) 1971.00
11,690.0	11,690.0	11.5			Additive Proppant Type 20/40 WS Amount 83,460.6 Units lb Sand Size 20/40
11,796.6	11,796.6	11.5			Additive Proppant Type 40/70 WS Amount 2,164.7 Units lb Sand Size 40/70
11,982.0	11,982.0	11.5			Stg # 30 Start Date 9/6/2014 Top Depth (ftKB) 10,602.0 Bottom Depth (ftKB) 10,609.0 Vol Clean Pump (bbl) 1886.60 Vol Slurry (bbl) 1978.10
12,095.8	12,095.8	11.5			Additive Proppant Type 20/40 WS Amount 81,478.0 Units lb Sand Size 20/40
12,282.2	12,282.2	11.5			Additive Proppant Type 40/70 WS Amount 2,172.4 Units lb Sand Size 40/70
12,471.5	12,471.5	11.5			Stg # 29 Start Date 9/6/2014 Top Depth (ftKB) 10,703.0 Bottom Depth (ftKB) 10,710.0 Vol Clean Pump (bbl) 1878.80 Vol Slurry (bbl) 1971.00
12,582.0	12,582.0	11.5			Additive Proppant Type 20/40 WS Amount 83,460.6 Units lb Sand Size 20/40
12,774.9	12,774.9	11.5			Additive Proppant Type 40/70 WS Amount 2,164.7 Units lb Sand Size 40/70
12,966.9	12,966.9	11.5			Stg # 30 Start Date 9/6/2014 Top Depth (ftKB) 10,602.0 Bottom Depth (ftKB) 10,609.0 Vol Clean Pump (bbl) 1886.60 Vol Slurry (bbl) 1978.10
13,074.1	13,074.1	11.5			Additive Proppant Type 20/40 WS Amount 81,478.0 Units lb Sand Size 20/40
13,267.1	13,267.1	11.5			Additive Proppant Type 40/70 WS Amount 2,172.4 Units lb Sand Size 40/70
13,462.6	13,462.6	11.5			Stg # 29 Start Date 9/6/2014 Top Depth (ftKB) 10,703.0 Bottom Depth (ftKB) 10,710.0 Vol Clean Pump (bbl) 1878.80 Vol Slurry (bbl) 1971.00
13,568.9	13,568.9	11.5			Additive Proppant Type 20/40 WS Amount 83,460.6 Units lb Sand Size 20/40
13,711.0	13,711.0	11.5			Additive Proppant Type 40/70 WS Amount 2,164.7 Units lb Sand Size 40/70



Lease Review

Well Name: RAZOR 26I-2316B

API Number 051233848800	WPC ID 1CO076998	Well Permit Number	Field Name DJ Horizontal Niobrara	County Weld	State CO
Well Configuration Type Lateral/Horizontal	Orig KB Elv (ft) 4,732.00	Ground Elevation (ft) 4,711.00	Casing Flange Elevation (ft)	Tubing Head Elevation (ft)	Total Depth (ftKB) 13,711.0
Original Spud Date 5/7/2014	Completion Date 9/10/2014	Asset Group Redtail	Responsible Engineer Charles Ohlson	N/S Dist (ft) 2,167.0	N/S Ref FSL
				E/W Dist (ft) 663.0	E/W Ref FEL
Lot	Quarter 1 NE	Quarter 2 SE	Quarter 3	Quarter 4	Section 26
			Section Suffix	Section Type	Township 10 N
					Township N/S Dir Range 58 W
					Meridian

Lateral/Horizontal - Original Hole, 12/26/2014 10:58:46 AM					
MD (ftKB)	D (ft KB)	n c l ()	Vertical schematic (actual)	Logs	
					Additive Proppant Type 20/40 WS Amount 82,898.9 Units lb Sand Size 20/40
					Additive Proppant Type 40/70 WS Amount 2,069.5 Units lb Sand Size 40/70
					Stg # 31 Start Date 9/6/2014 Top Depth (ftKB) 10,502.0 Bottom Depth (ftKB) 10,509.0 Vol Clean Pump (bbl) 1882.40 Vol Slurry (bbl) 1971.80
25.9	25.9	11.0			Additive Proppant Type 20/40 WS Amount 80,980.9 Units lb Sand Size 20/40
80.1	80.1	11.0			Additive Proppant Type 40/70 WS Amount 2,050.7 Units lb Sand Size 40/70
2,965.6	2,965.6	11.0			Stg # 32 Start Date 9/6/2014 Top Depth (ftKB) 10,402.0 Bottom Depth (ftKB) 10,409.0 Vol Clean Pump (bbl) 1892.80 Vol Slurry (bbl) 1982.70
4,481.3	4,481.3	11.0			Additive Proppant Type 20/40 WS Amount 81,359.0 Units lb Sand Size 20/40
5,001.6	5,001.6	11.0			Additive Proppant Type 40/70 WS Amount 2,157.0 Units lb Sand Size 40/70
5,255.2	5,255.2	11.0			Stg # 33 Start Date 9/6/2014 Top Depth (ftKB) 10,302.0 Bottom Depth (ftKB) 10,309.0 Vol Clean Pump (bbl) 1873.90 Vol Slurry (bbl) 1961.90
6,029.2	6,029.2	11.0			Additive Proppant Type 20/40 WS Amount 79,616.3 Units lb Sand Size 20/40
6,229.7	6,229.7	11.0			Additive Proppant Type 40/70 WS Amount 2,078.4 Units lb Sand Size 40/70
6,341.9	6,341.9	11.0			Stg # 34 Start Date 9/6/2014 Top Depth (ftKB) 10,201.0 Bottom Depth (ftKB) 10,208.0 Vol Clean Pump (bbl) 1884.90 Vol Slurry (bbl) 1975.50
6,536.1	6,536.1	11.0			Additive Proppant Type 20/40 WS Amount 81,999.3 Units lb Sand Size 20/40
6,643.4	6,643.4	11.0			Additive Proppant Type 40/70 WS Amount 2,152.5 Units lb Sand Size 40/70
6,837.9	6,837.9	11.0			Stg # 35 Start Date 9/6/2014 Top Depth (ftKB) 10,100.0 Bottom Depth (ftKB) 10,107.0 Vol Clean Pump (bbl) 1897.50 Vol Slurry (bbl) 1984.90
7,032.8	7,032.8	11.0			Additive Proppant Type 20/40 WS Amount 79,116.2 Units lb Sand Size 20/40
7,134.2	7,134.2	11.0			Additive Proppant Type 40/70 WS Amount 2,106.0 Units lb Sand Size 40/70
7,329.7	7,329.7	11.0			Stg # 36 Start Date 9/6/2014 Top Depth (ftKB) 10,002.0 Bottom Depth (ftKB) 10,009.0 Vol Clean Pump (bbl) 1984.60 Vol Slurry (bbl) 2072.90
7,528.5	7,528.5	11.0			Additive Proppant Type 20/40 WS Amount 80,128.6 Units lb Sand Size 20/40
7,633.9	7,633.9	11.0			Additive Proppant Type 40/70 WS Amount 1,907.9 Units lb Sand Size 40/70
7,828.4	7,828.4	11.0			Stg # 37 Start Date 9/6/2014 Top Depth (ftKB) 9,904.0 Bottom Depth (ftKB) 9,911.0 Vol Clean Pump (bbl) 1905.10 Vol Slurry (bbl) 1994.20
7,928.1	7,928.1	11.0			Additive Proppant Type 20/40 WS Amount 80,692.3 Units lb Sand Size 20/40
8,035.4	8,035.4	11.0			Additive Proppant Type 40/70 WS Amount 2,077.3 Units lb Sand Size 40/70
8,234.6	8,234.6	11.0			Stg # 38 Start Date 9/7/2014 Top Depth (ftKB) 9,803.0 Bottom Depth (ftKB) 9,810.0 Vol Clean Pump (bbl) 1896.20 Vol Slurry (bbl) 1985.30
8,423.9	8,423.9	11.0			Additive Proppant Type 20/40 WS Amount 80,833.6 Units lb Sand Size 20/40
8,530.8	8,530.8	11.0			Additive Proppant Type 40/70 WS Amount 1,921.2 Units lb Sand Size 40/70
8,723.1	8,723.1	11.0			Stg # 39 Start Date 9/7/2014 Top Depth (ftKB) 9,705.0 Bottom Depth (ftKB) 9,712.0 Vol Clean Pump (bbl) 1941.70 Vol Slurry (bbl) 2031.40
8,822.2	8,822.2	11.0			Additive Proppant Type 20/40 WS Amount 81,367.0 Units lb Sand Size 20/40
9,006.9	9,006.9	11.0			Additive Proppant Type 40/70 WS Amount 1,926.8 Units lb Sand Size 40/70
9,111.9	9,111.9	11.0			Stg # 40 Start Date 9/7/2014 Top Depth (ftKB) 9,605.0 Bottom Depth (ftKB) 9,612.0 Vol Clean Pump (bbl) 1884.60 Vol Slurry (bbl) 1973.30
9,301.8	9,301.8	11.0			Additive Proppant Type 20/40 WS Amount 80,318.2 Units lb Sand Size 20/40
9,410.1	9,410.1	11.0			Additive Proppant Type 40/70 WS Amount 2,096.1 Units lb Sand Size 40/70
9,605.3	9,605.3	11.0			Stg # 41 Start Date 9/7/2014 Top Depth (ftKB) 9,504.0 Bottom Depth (ftKB) 9,511.0 Vol Clean Pump (bbl) 1908.50 Vol Slurry (bbl) 1996.40
9,712.3	9,712.3	11.0			Additive Proppant Type 20/40 WS Amount 79,450.0 Units lb Sand Size 20/40
9,903.5	9,903.5	11.0			Additive Proppant Type 40/70 WS Amount 2,159.2 Units lb Sand Size 40/70
10,008.5	10,008.5	11.0			Stg # 42 Start Date 9/7/2014 Top Depth (ftKB) 9,403.0 Bottom Depth (ftKB) 9,410.0 Vol Clean Pump (bbl) 1875.80 Vol Slurry (bbl) 1963.00
10,201.1	10,201.1	11.0			Additive Proppant Type 20/40 WS Amount 78,910.4 Units lb Sand Size 20/40
10,395.7	10,395.7	11.0			Additive Proppant Type 40/70 WS Amount 2,080.6 Units lb Sand Size 40/70
10,508.5	10,508.5	11.0			Stg # 43 Start Date 9/7/2014 Top Depth (ftKB) 9,302.0 Bottom Depth (ftKB) 9,309.0 Vol Clean Pump (bbl) 1864.50 Vol Slurry (bbl) 1953.20
10,710.0	10,710.0	11.0			Additive Proppant Type 20/40 WS Amount 80,408.0 Units lb Sand Size 20/40
10,898.9	10,898.9	11.0			Additive Proppant Type 40/70 WS Amount 2,018.6 Units lb Sand Size 40/70
11,006.2	11,006.2	11.0			Stg # 44 Start Date 9/8/2014 Top Depth (ftKB) 9,205.0 Bottom Depth (ftKB) 9,212.0 Vol Clean Pump (bbl) 1880.50 Vol Slurry (bbl) 1972.20
11,189.0	11,189.0	11.0			Additive Proppant Type 20/40 WS Amount 83,041.1 Units lb Sand Size 20/40
11,389.8	11,389.8	11.0			Additive Proppant Type 40/70 WS Amount 2,123.7 Units lb Sand Size 40/70
11,497.7	11,497.7	11.0			Stg # 45 Start Date 9/8/2014 Top Depth (ftKB) 9,105.0 Bottom Depth (ftKB) 9,112.0 Vol Clean Pump (bbl) 1868.10 Vol Slurry (bbl) 1958.50
11,690.0	11,690.0	11.0			Additive Proppant Type 20/40 WS Amount 81,999.3 Units lb Sand Size 20/40
11,796.6	11,796.6	11.0			Additive Proppant Type 40/70 WS Amount 1,965.5 Units lb Sand Size 40/70
11,982.0	11,982.0	11.0			Stg # 46 Start Date 9/8/2014 Top Depth (ftKB) 9,007.0 Bottom Depth (ftKB) 9,013.0 Vol Clean Pump (bbl) 1859.00 Vol Slurry (bbl) 1947.60
12,095.8	12,095.8	11.0			
12,282.2	12,282.2	11.0			
12,471.5	12,471.5	11.0			
12,582.0	12,582.0	11.0			
12,774.9	12,774.9	11.0			
12,966.9	12,966.9	11.0			
13,074.1	13,074.1	11.0			
13,267.1	13,267.1	11.0			
13,462.6	13,462.6	11.0			
13,568.9	13,568.9	11.0			
13,711.0	13,711.0	11.0			



Lease Review

Well Name: RAZOR 26I-2316B

API Number 051233848800	WPC ID 1CO076998	Well Permit Number	Field Name DJ Horizontal Niobrara	County Weld	State CO
Well Configuration Type Lateral/Horizontal	Orig KB Elv (ft) 4,732.00	Ground Elevation (ft) 4,711.00	Casing Flange Elevation (ft)	Tubing Head Elevation (ft)	Total Depth (ftKB) 13,711.0
Original Spud Date 5/7/2014	Completion Date 9/10/2014	Asset Group Redtail	Responsible Engineer Charles Ohlson	N/S Dist (ft) 2,167.0	N/S Ref FSL
				E/W Dist (ft) 663.0	E/W Ref FEL
Lot	Quarter 1 NE	Quarter 2 SE	Quarter 3	Quarter 4	Section 26
			Section Suffix	Section Type	Township 10 N
					Township N/S Dir Range 58 W

Lateral/Horizontal - Original Hole, 12/26/2014 10:58:51 AM					
MD (ftKB)	D (ft KB)	n c l	Vertical schematic (actual)	Logs	
					Additive Proppant Type 20/40 WS Amount 80,129.7 Units lb Sand Size 20/40
					Additive Proppant Type 40/70 WS Amount 2,128.2 Units lb Sand Size 40/70
					Stg # 47 Start Date 9/8/2014 Top Depth (ftKB) 8,906.0 Bottom Depth (ftKB) 8,913.0 Vol Clean Pump (bbl) 1881.60 Vol Slurry (bbl) 1975.60
25.9	25.9	11.5			Additive Proppant Type 20/40 WS Amount 85,236.4 Units lb Sand Size 20/40
80.1	80.1	11.5			Additive Proppant Type 40/70 WS Amount 2,109.4 Units lb Sand Size 40/70
2,965.6	2,965.6	11.5			Stg # 48 Start Date 9/8/2014 Top Depth (ftKB) 8,815.0 Bottom Depth (ftKB) 8,822.0 Vol Clean Pump (bbl) 2398.30 Vol Slurry (bbl) 2489.10
4,481.3	4,481.3	11.5			Additive Proppant Type 20/40 WS Amount 82,086.0 Units lb Sand Size 20/40
5,001.6	5,001.6	11.5			Additive Proppant Type 40/70 WS Amount 2,214.5 Units lb Sand Size 40/70
5,255.2	5,255.2	11.5			Stg # 49 Start Date 9/8/2014 Top Depth (ftKB) 8,723.0 Bottom Depth (ftKB) 8,729.0 Vol Clean Pump (bbl) 1873.10 Vol Slurry (bbl) 1966.40
6,029.2	6,029.2	11.5			Additive Proppant Type 20/40 WS Amount 84,571.9 Units lb Sand Size 20/40
6,229.7	6,229.7	11.5			Additive Proppant Type 40/70 WS Amount 2,133.7 Units lb Sand Size 40/70
6,341.9	6,341.9	11.5			Stg # 50 Start Date 9/8/2014 Top Depth (ftKB) 8,624.0 Bottom Depth (ftKB) 8,631.0 Vol Clean Pump (bbl) 1863.90 Vol Slurry (bbl) 1953.00
6,536.1	6,536.1	11.5			Additive Proppant Type 20/40 WS Amount 80,846.7 Units lb Sand Size 20/40
6,643.4	6,643.4	11.5			Additive Proppant Type 40/70 WS Amount 1,930.1 Units lb Sand Size 40/70
6,837.9	6,837.9	11.5			Stg # 51 Start Date 9/8/2014 Top Depth (ftKB) 8,525.0 Bottom Depth (ftKB) 8,531.0 Vol Clean Pump (bbl) 1856.30 Vol Slurry (bbl) 1945.10
7,032.8	7,032.8	11.5			Additive Proppant Type 20/40 WS Amount 80,421.0 Units lb Sand Size 20/40
7,134.2	7,134.2	11.5			Additive Proppant Type 40/70 WS Amount 2,058.5 Units lb Sand Size 40/70
7,329.7	7,329.7	11.5			Stg # 52 Start Date 9/8/2014 Top Depth (ftKB) 8,424.0 Bottom Depth (ftKB) 8,431.0 Vol Clean Pump (bbl) 1902.90 Vol Slurry (bbl) 1991.70
7,528.5	7,528.5	11.5			Additive Proppant Type 20/40 WS Amount 80,531.1 Units lb Sand Size 20/40
7,633.9	7,633.9	11.5			Additive Proppant Type 40/70 WS Amount 1,934.5 Units lb Sand Size 40/70
7,828.4	7,828.4	11.5			Stg # 53 Start Date 9/8/2014 Top Depth (ftKB) 8,323.0 Bottom Depth (ftKB) 8,330.0 Vol Clean Pump (bbl) 1875.70 Vol Slurry (bbl) 1964.70
7,928.1	7,928.1	11.5			Additive Proppant Type 20/40 WS Amount 80,516.1 Units lb Sand Size 20/40
8,035.4	8,035.4	11.5			Additive Proppant Type 40/70 WS Amount 2,122.6 Units lb Sand Size 40/70
8,234.6	8,234.6	11.5			Stg # 54 Start Date 9/8/2014 Top Depth (ftKB) 8,228.0 Bottom Depth (ftKB) 8,235.0 Vol Clean Pump (bbl) 1873.40 Vol Slurry (bbl) 1963.60
8,423.9	8,423.9	11.5			Additive Proppant Type 20/40 WS Amount 81,677.7 Units lb Sand Size 20/40
8,530.8	8,530.8	11.5			Additive Proppant Type 40/70 WS Amount 2,130.4 Units lb Sand Size 40/70
8,723.1	8,723.1	11.5			Stg # 55 Start Date 9/8/2014 Top Depth (ftKB) 8,127.0 Bottom Depth (ftKB) 8,134.0 Vol Clean Pump (bbl) 1865.00 Vol Slurry (bbl) 1956.10
8,822.2	8,822.2	11.5			Additive Proppant Type 20/40 WS Amount 82,471.2 Units lb Sand Size 20/40
9,006.9	9,006.9	11.5			Additive Proppant Type 40/70 WS Amount 2,103.8 Units lb Sand Size 40/70
9,111.9	9,111.9	11.5			Stg # 56 Start Date 9/8/2014 Top Depth (ftKB) 8,029.0 Bottom Depth (ftKB) 8,035.0 Vol Clean Pump (bbl) 1867.30 Vol Slurry (bbl) 1958.60
9,301.8	9,301.8	11.5			Additive Proppant Type 20/40 WS Amount 82,734.4 Units lb Sand Size 20/40
9,410.1	9,410.1	11.5			Additive Proppant Type 40/70 WS Amount 2,093.9 Units lb Sand Size 40/70
9,605.3	9,605.3	11.5			Stg # 57 Start Date 9/9/2014 Top Depth (ftKB) 7,928.0 Bottom Depth (ftKB) 7,935.0 Vol Clean Pump (bbl) 1876.60 Vol Slurry (bbl) 1966.70
9,712.3	9,712.3	11.5			Additive Proppant Type 20/40 WS Amount 81,648.3 Units lb Sand Size 20/40
9,903.5	9,903.5	11.5			Additive Proppant Type 40/70 WS Amount 2,072.8 Units lb Sand Size 40/70
10,008.5	10,008.5	11.5			Stg # 58 Start Date 9/9/2014 Top Depth (ftKB) 7,835.0 Bottom Depth (ftKB) 7,841.0 Vol Clean Pump (bbl) 1860.30 Vol Slurry (bbl) 1949.70
10,201.1	10,201.1	11.5			Additive Proppant Type 20/40 WS Amount 81,042.2 Units lb Sand Size 20/40
10,395.7	10,395.7	11.5			Additive Proppant Type 40/70 WS Amount 1,956.6 Units lb Sand Size 40/70
10,508.5	10,508.5	11.5			Stg # 59 Start Date 9/9/2014 Top Depth (ftKB) 7,734.0 Bottom Depth (ftKB) 7,741.0 Vol Clean Pump (bbl) 1865.10 Vol Slurry (bbl) 1954.80
10,710.0	10,710.0	11.5			Additive Proppant Type 20/40 WS Amount 81,372.1 Units lb Sand Size 20/40
10,898.9	10,898.9	11.5			Additive Proppant Type 40/70 WS Amount 1,978.8 Units lb Sand Size 40/70
11,006.2	11,006.2	11.5			Stg # 60 Start Date 9/9/2014 Top Depth (ftKB) 7,634.0 Bottom Depth (ftKB) 7,640.0 Vol Clean Pump (bbl) 1861.20 Vol Slurry (bbl) 1951.10
11,189.0	11,189.0	11.5			Additive Proppant Type 20/40 WS Amount 81,646.4 Units lb Sand Size 20/40
11,389.8	11,389.8	11.5			Additive Proppant Type 40/70 WS Amount 1,890.2 Units lb Sand Size 40/70
11,497.7	11,497.7	11.5			Stg # 61 Start Date 9/9/2014 Top Depth (ftKB) 7,535.0 Bottom Depth (ftKB) 7,542.0 Vol Clean Pump (bbl) 1839.20 Vol Slurry (bbl) 1928.90
11,690.0	11,690.0	11.5			Additive Proppant Type 20/40 WS Amount 81,179.4 Units lb Sand Size 20/40
11,796.6	11,796.6	11.5			Additive Proppant Type 40/70 WS Amount 2,160.3 Units lb Sand Size 40/70
11,982.0	11,982.0	11.5			Stg # 62 Start Date 9/9/2014 Top Depth (ftKB) 7,434.0 Bottom Depth (ftKB) 7,441.0 Vol Clean Pump (bbl) 1862.70 Vol Slurry (bbl) 1953.50
12,095.8	12,095.8	11.5			
12,282.2	12,282.2	11.5			
12,471.5	12,471.5	11.5			
12,582.0	12,582.0	11.5			
12,774.9	12,774.9	11.5			
12,966.9	12,966.9	11.5			
13,074.1	13,074.1	11.5			
13,267.1	13,267.1	11.5			
13,462.6	13,462.6	11.5			
13,568.9	13,568.9	11.5			
13,711.0	13,711.0	11.5			

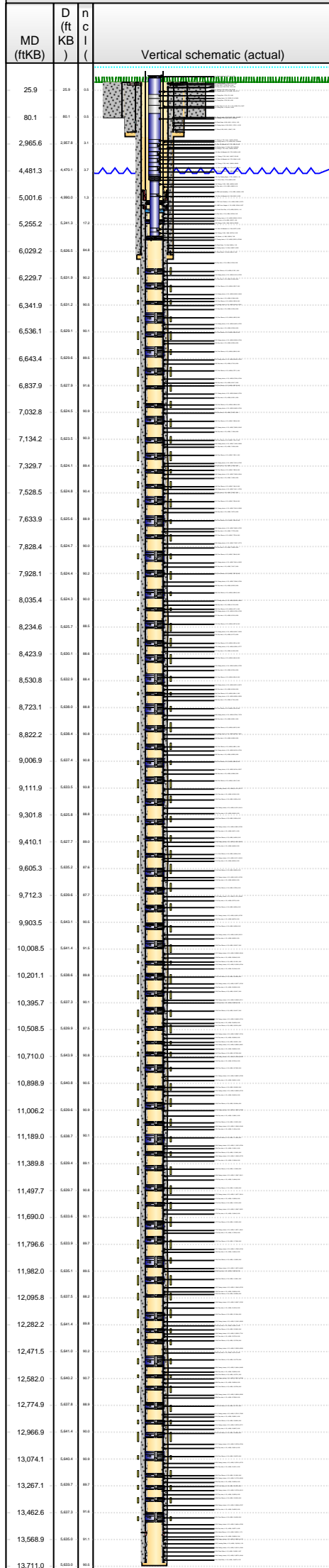


Lease Review

Well Name: RAZOR 26I-2316B

API Number 051233848800	WPC ID 1CO076998	Well Permit Number	Field Name DJ Horizontal Niobrara	County Weld	State CO
Well Configuration Type Lateral/Horizontal	Orig KB Elv (ft) 4,732.00	Ground Elevation (ft) 4,711.00	Casing Flange Elevation (ft)	Tubing Head Elevation (ft)	Total Depth (ftKB) 13,711.0
Original Spud Date 5/7/2014	Completion Date 9/10/2014	Asset Group Redtail	Responsible Engineer Charles Ohlson	N/S Dist (ft) 2,167.0	N/S Ref FSL
				E/W Dist (ft) 663.0	E/W Ref FEL
Lot	Quarter 1 NE	Quarter 2 SE	Quarter 3	Quarter 4	Section 26
			Section Suffix	Section Type	Township 10 N
					Township N/S Dir N
					Range 58 W
					Range E/W Dir W
					Meridian

Lateral/Horizontal - Original Hole, 12/26/2014 10:58:57 AM



MD (ftKB)	D (ftKB)	n c l	Vertical schematic (actual)	Logs	Stg #	Start Date	Top Depth (ftKB)	Bottom Depth (ftKB)	Vol Clean Pump (bbl)	Vol Slurry (bbl)
					63	9/9/2014	7,336.0	7,343.0	1847.30	1937.30
					Additive Proppant Type 20/40 WS Amount 82,380.5 lb Units Sand Size 20/40					
					Additive Proppant Type 40/70 WS Amount 1,992.1 lb Units Sand Size 40/70					
25.9	25.9	11.5			64	9/9/2014	7,235.0	7,242.0	1857.00	1947.00
80.1	80.1	11.5			Additive Proppant Type 20/40 WS Amount 81,955.9 lb Units Sand Size 20/40					
2,965.6	2,965.6	11.5			Additive Proppant Type 40/70 WS Amount 1,620.2 lb Units Sand Size 40/70					
4,481.3	4,481.3	11.5			65	9/9/2014	7,134.0	7,141.0	1852.00	1941.60
5,001.6	5,001.6	11.5			Additive Proppant Type 20/40 WS Amount 81,501.2 lb Units Sand Size 20/40					
5,255.2	5,255.2	11.5			Additive Proppant Type 40/70 WS Amount 2,058.5 lb Units Sand Size 40/70					
6,029.2	6,029.2	11.5			66	9/9/2014	7,039.0	7,046.0	1853.80	1944.40
6,229.7	6,229.7	11.5			Additive Proppant Type 20/40 WS Amount 82,255.5 lb Units Sand Size 20/40					
6,341.9	6,341.9	11.5			Additive Proppant Type 40/70 WS Amount 1,995.4 lb Units Sand Size 40/70					
6,536.1	6,536.1	11.5			67	9/9/2014	6,938.0	6,945.0	1993.50	2082.80
6,643.4	6,643.4	11.5			Additive Proppant Type 20/40 WS Amount 80,884.1 lb Units Sand Size 20/40					
6,837.9	6,837.9	11.5			Additive Proppant Type 40/70 WS Amount 2,095.0 lb Units Sand Size 40/70					
7,032.8	7,032.8	11.5			68	9/9/2014	6,838.0	6,845.0	1854.40	1944.50
7,134.2	7,134.2	11.5			Additive Proppant Type 20/40 WS Amount 81,589.0 lb Units Sand Size 20/40					
7,329.7	7,329.7	11.5			Additive Proppant Type 40/70 WS Amount 2,061.8 lb Units Sand Size 40/70					
7,528.5	7,528.5	11.5			69	9/9/2014	6,737.0	6,744.0	1839.50	1929.60
7,633.9	7,633.9	11.5			Additive Proppant Type 20/40 WS Amount 81,588.8 lb Units Sand Size 20/40					
7,828.4	7,828.4	11.5			Additive Proppant Type 40/70 WS Amount 2,061.8 lb Units Sand Size 40/70					
7,928.1	7,928.1	11.5			70	9/10/2014	6,637.0	6,643.0	1833.90	1924.30
8,035.4	8,035.4	11.5			Additive Proppant Type 20/40 WS Amount 81,891.4 lb Units Sand Size 20/40					
8,234.6	8,234.6	11.5			Additive Proppant Type 40/70 WS Amount 2,119.3 lb Units Sand Size 40/70					
8,423.9	8,423.9	11.5			71	9/10/2014	6,536.0	6,543.0	1848.40	1938.10
8,530.8	8,530.8	11.5			Additive Proppant Type 20/40 WS Amount 81,318.7 lb Units Sand Size 20/40					
8,723.1	8,723.1	11.5			Additive Proppant Type 40/70 WS Amount 2,025.3 lb Units Sand Size 40/70					
8,822.2	8,822.2	11.5			72	9/10/2014	6,436.0	6,442.0	1957.30	2048.00
9,006.9	9,006.9	11.5			Additive Proppant Type 20/40 WS Amount 82,168.8 lb Units Sand Size 20/40					
9,111.9	9,111.9	11.5			Additive Proppant Type 40/70 WS Amount 2,065.1 lb Units Sand Size 40/70					
9,301.8	9,301.8	11.5			73	9/10/2014	6,335.0	6,342.0	1839.10	1929.70
9,410.1	9,410.1	11.5			Additive Proppant Type 20/40 WS Amount 82,080.0 lb Units Sand Size 20/40					
9,605.3	9,605.3	11.5			Additive Proppant Type 40/70 WS Amount 2,071.7 lb Units Sand Size 40/70					
9,712.3	9,712.3	11.5			74	9/10/2014	6,236.0	6,243.0	1834.20	1923.50
9,903.5	9,903.5	11.5			Additive Proppant Type 20/40 WS Amount 81,023.3 lb Units Sand Size 20/40					
10,008.5	10,008.5	11.5			Additive Proppant Type 40/70 WS Amount 1,884.7 lb Units Sand Size 40/70					
10,201.1	10,201.1	11.5			75	9/10/2014	6,135.0	6,142.0	1928.90	2033.30
10,395.7	10,395.7	11.5			Additive Proppant Type 20/40 WS Amount 94,885.3 lb Units Sand Size 20/40					
10,508.5	10,508.5	11.5			Additive Proppant Type 40/70 WS Amount 2,062.9 lb Units Sand Size 40/70					
10,710.0	10,710.0	11.5			Tubing - Production set at 5,576.3ftKB on 10/23/2014 06:00					
10,898.9	10,898.9	11.5			Set Depth (ftKB)	Comment	Run Date	Pull Date		
11,006.2	11,006.2	11.5			5,576.3		10/23/2014			
11,189.0	11,189.0	11.5			Item Des	OD (in)	ID (in)	Len (ft)	Top (ftKB)	Btm (ftKB)
11,389.8	11,389.8	11.5			Tubing Hanger	2 7/8		0.50	14.1	14.6
11,497.7	11,497.7	11.5			Tubing	2 7/8	2.441	32.60	14.6	47.2
11,690.0	11,690.0	11.5			Tubing Sub	2 7/8		3.00	47.2	50.2
11,796.6	11,796.6	11.5			Tubing Sub	2 7/8		4.00	50.2	54.2
11,982.0	11,982.0	11.5			Tubing Sub	2 7/8		10.00	54.2	64.2
12,095.8	12,095.8	11.5			Tubing	2 7/8	2.441	1,923.40	64.2	1,987.6
12,282.2	12,282.2	11.5			Tubing	2 7/8	2.441	978.00	1,987.6	2,965.6
12,471.5	12,471.5	11.5			Gas Lift Mandrel #6	2 7/8		4.05	2,965.6	2,969.6



Lease Review

Well Name: RAZOR 26I-2316B

API Number 051233848800		WPC ID 1CO076998		Well Permit Number		Field Name DJ Horizontal Niobrara		County Weld		State CO	
Well Configuration Type Lateral/Horizontal		Orig KB Elv (ft) 4,732.00		Ground Elevation (ft) 4,711.00		Casing Flange Elevation (ft)		Tubing Head Elevation (ft)		Total Depth (ftKB) 13,711.0	
Original Spud Date 5/7/2014		Completion Date 9/10/2014		Asset Group Redtail		Responsible Engineer Charles Ohlson		N/S Dist (ft) 2,167.0	N/S Ref FSL	E/W Dist (ft) 663.0	E/W Ref FEL
Lot	Quarter 1 NE	Quarter 2 SE	Quarter 3	Quarter 4	Section 26	Section Suffix	Section Type	Township 10 N	Township N/S Dir	Range 58 W	Meridian

Lateral/Horizontal - Original Hole, 12/26/2014 10:59:02 AM			Item Des	OD (in)	ID (in)	Len (ft)	Top (ftKB)	Btm (ftKB)			
MD (ftKB)	D (ft KB)	n c l ()	Tubing	2 7/8	2.441	489.00	2,969.6	3,458.6			
			Gas Lift Mandrel #5	2 7/8		4.05	3,458.6	3,462.7			
			Tubing	2 7/8	2.441	521.60	3,462.7	3,984.3			
			Gas Lift Mandrel #4	2 7/8		4.05	3,984.3	3,988.3			
25.9	25.9	11.5	Tubing	2 7/8	2.441	489.00	3,988.3	4,477.3			
80.1	80.1	11.5	Gas Lift Mandrel #3	2 7/8		4.05	4,477.3	4,481.4			
2,965.6	2,967.4	11.5	Tubing	2 7/8	2.441	423.80	4,481.4	4,905.2			
4,481.3	4,483.1	11.5	Cup Seating Nipple	2 7/8		1.10	4,905.2	4,906.3			
5,001.6	5,003.4	11.5	Cross Over	2 7/8		0.50	4,906.3	4,906.8			
5,255.2	5,257.0	11.5	Tubing	2 3/8	1.995	94.50	4,906.8	5,001.3			
6,029.2	6,031.0	11.5	Gas Lift Mandrel #2	2 3/8		0.50	5,001.3	5,001.8			
6,229.7	6,231.5	11.5	Tubing	2 3/8	1.995	535.50	5,001.8	5,537.3			
6,341.9	6,343.7	11.5	Gas Lift Mandrel #1	2 3/8		0.50	5,537.3	5,537.8			
6,536.1	6,537.9	11.5	Tubing	2 3/8	1.995	31.50	5,537.8	5,569.3			
6,536.1	6,537.9	11.5	Packer	4	1.995	7.00	5,569.3	5,576.3			
6,643.4	6,645.2	11.5	Rod Strings								
6,837.9	6,839.7	11.5	Rod Description		Run Date		Pull Date				
7,032.8	7,034.6	11.5	Item Des		OD (in)	Len (ft)	Top (ftKB)	Btm (ftKB)			
7,134.2	7,136.0	11.5	Other Strings								
7,329.7	7,331.5	11.5	Set Depth (ftKB)		Comment			Run Date	Pull Date		
7,528.5	7,530.3	11.5	Item Des		OD (in)	Len (ft)	Top (ftKB)	Btm (ftKB)			
7,633.9	7,635.7	11.5	Other In Hole								
7,828.4	7,830.2	11.5	Des		OD (in)	Run Date	Pull Date	Top (ftKB)	Btm (ftKB)		
7,928.1	7,929.9	11.5	Bottom Hole Cores								
8,035.4	8,037.2	11.5	Date		Core #	Top (ftKB)	Btm (ftKB)	Recov (ft)			
8,234.6	8,236.4	11.5									
8,423.9	8,425.7	11.5									
8,530.8	8,532.6	11.5									
8,723.1	8,724.9	11.5									
8,822.2	8,824.0	11.5									
9,006.9	9,008.7	11.5									
9,111.9	9,113.7	11.5									
9,301.8	9,303.6	11.5									
9,410.1	9,411.9	11.5									
9,605.3	9,607.1	11.5									
9,712.3	9,714.1	11.5									
9,903.5	9,905.3	11.5									
10,008.5	10,010.3	11.5									
10,201.1	10,202.9	11.5									
10,395.7	10,397.5	11.5									
10,508.5	10,510.3	11.5									
10,710.0	10,711.8	11.5									
10,898.9	10,900.7	11.5									
11,006.2	11,008.0	11.5									
11,189.0	11,190.8	11.5									
11,389.8	11,391.6	11.5									
11,497.7	11,499.5	11.5									
11,690.0	11,691.8	11.5									
11,796.6	11,798.4	11.5									
11,982.0	11,983.8	11.5									
12,095.8	12,097.6	11.5									
12,282.2	12,284.0	11.5									
12,471.5	12,473.3	11.5									
12,582.0	12,583.8	11.5									
12,774.9	12,776.7	11.5									
12,966.9	12,968.7	11.5									
13,074.1	13,075.9	11.5									
13,267.1	13,268.9	11.5									
13,462.6	13,464.4	11.5									
13,568.9	13,570.7	11.5									
13,711.0	13,712.8	11.5									