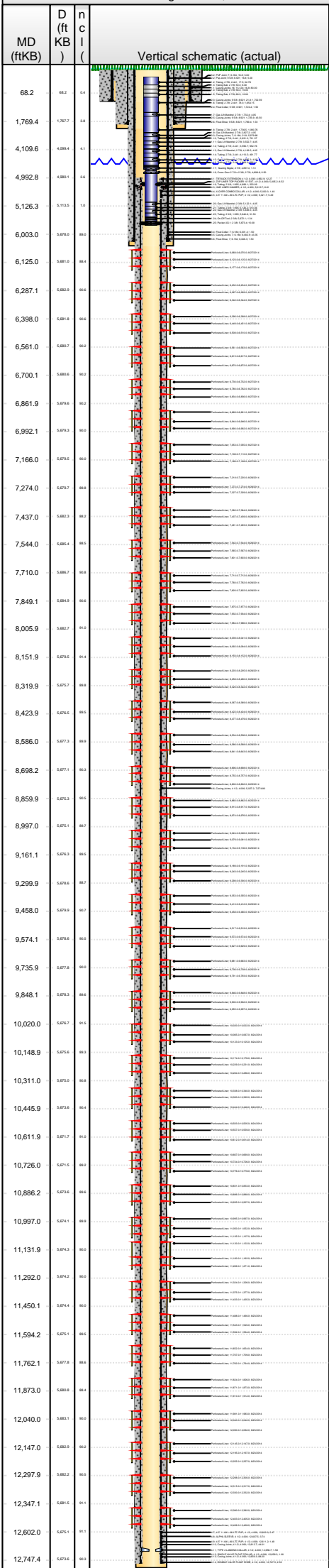




Lease Review
Well Name: RAZOR 26L-3502B

API Number 051233799200	WPC ID 1CO0761035	Well Permit Number	Field Name DJ Horizontal Niobrara	County Weld	State CO
Well Configuration Type Lateral/Horizontal	Orig KB Elv (ft) 4,751.00	Ground Elevation (ft) 4,734.20	Casing Flange Elevation (ft)	Tubing Head Elevation (ft)	Total Depth (ftKB) 12,760.0
Original Spud Date 4/15/2014	Completion Date 8/28/2014	Asset Group Retail	Responsible Engineer Andrew Fish	N/S Dist (ft) 2,244.0	N/S Ref FSL
				E/W Dist (ft) 626.0	E/W Ref FWL
Lot	Quarter 1 NW	Quarter 2 SW	Quarter 3	Quarter 4	Section 26
			Section Suffix	Section Type	Township 10 N
					Township N/S Dir N
					Range 58
					Range E/W Dir W
					Meridian

Lateral/Horizontal - Original Hole, 12/26/2014 10:10:54 AM



Wellbore Sections

Section Des	Wellbore Name	Start Date	Size (in)	Act Top (ftKB)	Act Btm (ftKB)
Conductor	Original Hole	3/28/2014	20	16.8	96.8
Surface	Original Hole	4/15/2014	13 1/2	96.8	1,790.0
Intermediate	Original Hole	4/17/2014	8 3/4	1,790.0	6,060.0
Lateral	Original Hole	4/20/2014	6	6,060.0	12,760.0

Conductor Pipe, 96.8ftKB

OD (in)	Wt (lb/ft)	Grade	Top (ftKB)	Btm (ftKB)	Len (ft)	Item Des
16	75.00	J-55	16.8	96.8	80.00	Casing Joints

Surface Csg, 1,770.9ftKB

OD (in)	Wt (lb/ft)	Grade	Top (ftKB)	Btm (ftKB)	Len (ft)	Item Des
9 5/8	36.00	J-55	16.8	16.8	0.00	Landing Joint
9 5/8	36.00	J-55	16.8	21.8	5.00	Pup Joint
9 5/8	36.00	J-55	21.8	1,724.4	1,702.59	Casing Joints
9 5/8	36.00	J-55	1,724.4	1,725.9	1.50	Float Collar
9 5/8	36.00	J-55	1,725.9	1,769.4	43.50	Casing Joints
9 5/8	36.00	J-55	1,769.4	1,770.9	1.50	Float Shoe

Intermediate Csg, 6,047.8ftKB

OD (in)	Wt (lb/ft)	Grade	Top (ftKB)	Btm (ftKB)	Len (ft)	Item Des
7	29.00	L-80	16.8	16.8	0.00	Landing Joint
7	29.00	L-80	16.8	21.8	5.00	PUP Joint
7	29.00	L-80	21.8	6,001.5	5,979.66	Casing Joints
7	29.00	L-80	6,001.5	6,003.0	1.50	Float Collar
7	29.00	L-80	6,003.0	6,046.3	43.35	Casing Joints
7	29.00	L-80	6,046.3	6,047.8	1.50	Float Shoe

Liner, 12,750.0ftKB

OD (in)	Wt (lb/ft)	Grade	Top (ftKB)	Btm (ftKB)	Len (ft)	Item Des
4 1/2	11.60	L-80	4,992.9	5,005.2	12.27	TIE BACK EXTENSION
4 1/2	11.60	L-80	5,005.2	5,013.7	8.52	ZXP LINER TOP PACKER 10' EXT.
4 1/2	11.60	L-80	5,013.7	5,020.3	6.61	HMC LINER HANGER
4 1/2	11.60	L-80	5,020.3	5,021.7	1.40	X-OVER COMBO COLLAR
4 1/2	11.60	L-80	5,021.7	5,027.2	5.49	4.5" 11.6# L-80 LTC PUP
4 1/2	11.60	L-80	5,027.2	12,602.0	7,574.80	Casing Joints
4 1/2	11.60	L-80	12,602.0	12,607.5	5.47	4.5" 11.6# L-80 LTC PUP
4 1/2	11.60	L-80	12,607.5	12,611.2	3.74	ALPHA SLEEVE
4 1/2	11.60	L-80	12,611.2	12,612.7	1.49	4.5" 11.6# L-80 LTC PUP
4 1/2	11.60	L-80	12,612.7	12,656.7	44.01	Casing Joints
4 1/2	11.60	L-80	12,656.7	12,658.3	1.58	TYPE 2 LANDING COLLAR
4 1/2	11.60	L-80	12,658.3	12,659.3	1.00	SINGLE VALVE FLOAT COLLAR
4 1/2	11.60	L-80	12,659.3	12,747.5	88.20	Casing Joints
4 1/2	11.60	L-80	12,747.5	12,750.0	2.52	DOUBLE VALVE FLOAT SHOE

Cement Stages

Des	Pump Start Date	Drill Out Date	Top (ftKB)	Btm (ftKB)	Top Meas Meth
Conductor Cement	3/28/2014		16.8	96.8	Returns to Surface
Surface Casing Cement	4/16/2014		16.8	1,770.9	Returns to Surface
Intermediate Casing Cement	4/20/2014		16.8	6,048.0	Returns to Surface
Liner Cement	4/24/2014		4,992.9	12,750.0	Volume Calculations

Perforations

Type of Hole	Date	Top (ftKB)	Btm (ftKB)	Zone
Perforated Liner	8/27/2014	6,068.0	6,070.0	Niobrara, Original Hole
Perforated Liner	8/27/2014	6,123.0	6,125.0	Niobrara, Original Hole
Perforated Liner	8/27/2014	6,177.0	6,179.0	Niobrara, Original Hole
Perforated Liner	8/27/2014	6,232.0	6,234.0	Niobrara, Original Hole
Perforated Liner	8/27/2014	6,287.0	6,289.0	Niobrara, Original Hole
Perforated Liner	8/27/2014	6,342.0	6,344.0	Niobrara, Original Hole
Perforated Liner	8/27/2014	6,396.0	6,398.0	Niobrara, Original Hole
Perforated Liner	8/27/2014	6,449.0	6,451.0	Niobrara, Original Hole
Perforated Liner	8/27/2014	6,508.0	6,510.0	Niobrara, Original Hole
Perforated Liner	8/27/2014	6,561.0	6,563.0	Niobrara, Original Hole
Perforated Liner	8/27/2014	6,615.0	6,617.0	Niobrara, Original Hole
Perforated Liner	8/27/2014	6,670.0	6,672.0	Niobrara, Original Hole
Perforated Liner	8/27/2014	6,730.0	6,732.0	Niobrara, Original Hole
Perforated Liner	8/27/2014	6,780.0	6,782.0	Niobrara, Original Hole
Perforated Liner	8/27/2014	6,834.0	6,836.0	Niobrara, Original Hole
Perforated Liner	8/27/2014	6,889.0	6,891.0	Niobrara, Original Hole
Perforated Liner	8/27/2014	6,944.0	6,946.0	Niobrara, Original Hole
Perforated Liner	8/27/2014	6,990.0	6,992.0	Niobrara, Original Hole
Perforated Liner	8/27/2014	7,053.0	7,055.0	Niobrara, Original Hole
Perforated Liner	8/27/2014	7,108.0	7,110.0	Niobrara, Original Hole



Lease Review
Well Name: RAZOR 26L-3502B

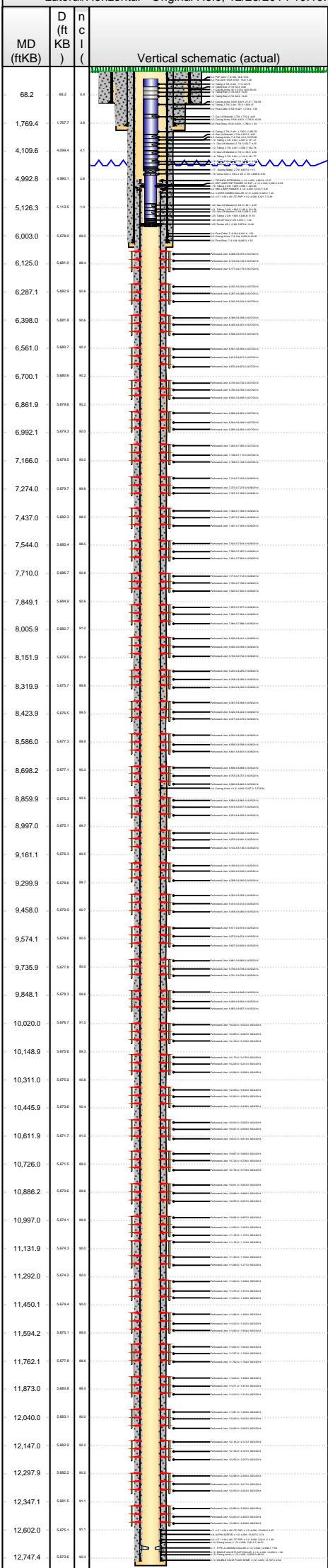
API Number 051233799200		WPC ID 1CO0761035		Well Permit Number		Field Name DJ Horizontal Niobrara		County Weld		State CO															
Well Configuration Type Lateral/Horizontal		Orig KB Elv (ft) 4,751.00		Ground Elevation (ft) 4,734.20		Casing Flange Elevation (ft)		Tubing Head Elevation (ft)		Total Depth (ftKB) 12,760.0															
Original Spud Date 4/15/2014		Completion Date 8/28/2014		Asset Group Redtail		Responsible Engineer Andrew Fish		N/S Dist (ft) 2,244.0		N/S Ref FSL		E/W Dist (ft) 626.0		E/W Ref FWL											
Lot		Quarter 1 NW		Quarter 2 SW		Quarter 3		Quarter 4		Section 26		Section Suffix		Section Type		Township 10 N		Township N/S Dir		Range 58		Range E/W Dir W		Meridian	
Lateral/Horizontal - Original Hole, 12/26/2014 10:10:55 AM						Perforations																			
MD (ftKB)		D (ft KB)		n (ft KB)		c (ft KB)		l (ft KB)		Type of Hole		Date		Top (ftKB)		Btm (ftKB)		Zone							



Lease Review
Well Name: RAZOR 26L-3502B

API Number 051233799200		WPC ID 1CO0761035			Well Permit Number			Field Name DJ Horizontal Niobrara			County Weld		State CO		
Well Configuration Type Lateral/Horizontal				Orig KB Elv (ft) 4,751.00		Ground Elevation (ft) 4,734.20		Casing Flange Elevation (ft)		Tubing Head Elevation (ft)		Total Depth (ftKB) 12,760.0			
Original Spud Date 4/15/2014		Completion Date 8/28/2014		Asset Group Redtail			Responsible Engineer Andrew Fish			N/S Dist (ft) 2,244.0		N/S Ref FSL	E/W Dist (ft) 626.0		E/W Ref FWL
Lot	Quarter 1 NW	Quarter 2 SW	Quarter 3	Quarter 4	Section 26	Section Suffix	Section Type	Township 10	Township N/S Dir N	Range 58	Range E/W Dir W	Meridian			

Lateral/Horizontal - Original Hole, 12/26/2014 10:10:57 AM



Perforations

Type of Hole	Date	Top (ftKB)	Btm (ftKB)	Zone
Perforated Liner	8/24/2014	11,050.0	11,052.0	Niobrara, Original Hole
Perforated Liner	8/24/2014	11,105.0	11,107.0	Niobrara, Original Hole
Perforated Liner	8/24/2014	11,120.0	11,122.0	Niobrara, Original Hole
Perforated Liner	8/24/2014	11,160.0	11,162.0	Niobrara, Original Hole
Perforated Liner	8/24/2014	11,269.0	11,271.0	Niobrara, Original Hole
Perforated Liner	8/23/2014	11,324.0	11,326.0	Niobrara, Original Hole
Perforated Liner	8/23/2014	11,375.0	11,377.0	Niobrara, Original Hole
Perforated Liner	8/23/2014	11,433.0	11,435.0	Niobrara, Original Hole
Perforated Liner	8/23/2014	11,488.0	11,490.0	Niobrara, Original Hole
Perforated Liner	8/23/2014	11,543.0	11,545.0	Niobrara, Original Hole
Perforated Liner	8/23/2014	11,592.0	11,594.0	Niobrara, Original Hole
Perforated Liner	8/23/2014	11,652.0	11,654.0	Niobrara, Original Hole
Perforated Liner	8/23/2014	11,707.0	11,709.0	Niobrara, Original Hole
Perforated Liner	8/23/2014	11,762.0	11,764.0	Niobrara, Original Hole
Perforated Liner	8/23/2014	11,824.0	11,826.0	Niobrara, Original Hole
Perforated Liner	8/23/2014	11,871.0	11,873.0	Niobrara, Original Hole
Perforated Liner	8/23/2014	11,910.0	11,912.0	Niobrara, Original Hole
Perforated Liner	8/23/2014	11,981.0	11,983.0	Niobrara, Original Hole
Perforated Liner	8/23/2014	12,040.0	12,042.0	Niobrara, Original Hole
Perforated Liner	8/23/2014	12,090.0	12,092.0	Niobrara, Original Hole
Perforated Liner	8/23/2014	12,145.0	12,147.0	Niobrara, Original Hole
Perforated Liner	8/23/2014	12,195.0	12,197.0	Niobrara, Original Hole
Perforated Liner	8/23/2014	12,255.0	12,257.0	Niobrara, Original Hole
Perforated Liner	8/22/2014	12,298.0	12,300.0	Niobrara, Original Hole
Perforated Liner	8/22/2014	12,315.0	12,317.0	Niobrara, Original Hole
Perforated Liner	8/22/2014	12,330.0	12,332.0	Niobrara, Original Hole
Perforated Liner	8/22/2014	12,380.0	12,382.0	Niobrara, Original Hole
Perforated Liner	8/22/2014	12,403.0	12,405.0	Niobrara, Original Hole
Perforated Liner	8/22/2014	12,426.0	12,428.0	Niobrara, Original Hole

Sand Frac on 8/22/2014 06:00

Comment Treatment End Date:8/27/2014; Number of staged intervals: 40; Total 28%HCl used: 732bbl; Min frac gradient: 0.801 psi/ft; Number of perfs: 1440; 202572 bbl Slickwater		Min Top De... 6,068.0	Max Btm D... 12,428.0	Frac Length (ft) 6,360.00
---	--	--------------------------	--------------------------	------------------------------

Stim/Treat Fluids

Slickwater; 28% HCl, <fluidtyp>

Proppant Frm (lb) 4,414,402.5	Total Clean Vol... 203304.70	Avg Treat Rate... 61.20	Max Treat Rate... 73.60	Avg Treat Press... 5,120.0	P Max (psi) 6,241.0	Frac Gradient (p... 0.84
----------------------------------	---------------------------------	----------------------------	----------------------------	-------------------------------	------------------------	-----------------------------

Stim/Treat Stages

Stg #	Start Date	Top Depth (ftKB)	Bottom Depth (ftKB)	Vol Clean Pump (bbl)	Vol Slurry (bbl)
1	8/22/2014	12,380.0	12,428.0	7820.60	7928.40
Additive		Type	Amount	Units	Sand Size
Proppant		30/50 WS	97,585.0	lb	30/50
Additive		Type	Amount	Units	Sand Size
Proppant		40/70 WS	2,585.0	lb	40/70
2	8/22/2014	12,298.0	12,332.0	5299.80	5014.40
Additive		Type	Amount	Units	Sand Size
Proppant		30/50 WS	100,521.0	lb	30/50
Additive		Type	Amount	Units	Sand Size
Proppant		40/70 WS	2,206.0	lb	40/70
3	8/22/2014	12,145.0	12,257.0	5236.60	5030.00
Additive		Type	Amount	Units	Sand Size
Proppant		30/50 WS	103,636.0	lb	30/50
Additive		Type	Amount	Units	Sand Size
Proppant		40/70 WS	2,666.0	lb	40/70
4	8/23/2014	11,981.0	12,092.0	5222.30	5032.00
Additive		Type	Amount	Units	Sand Size
Proppant		30/50 WS	108,586.0	lb	30/50
Additive		Type	Amount	Units	Sand Size
Proppant		40/70 WS	2,582.0	lb	40/70
5	8/23/2014	11,824.0	11,912.0	5163.80	5018.70
Additive		Type	Amount	Units	Sand Size
Proppant		30/50 WS	100,421.0	lb	30/50
Additive		Type	Amount	Units	Sand Size
Proppant		40/70 WS	2,546.7	lb	40/70
6	8/23/2014	11,652.0	11,764.0	4983.80	4847.00
Additive		Type	Amount	Units	Sand Size
Proppant		30/50 WS	108,494.0	lb	30/50
Additive		Type	Amount	Units	Sand Size
Proppant		40/70 WS	3,158.0	lb	40/70
7	8/23/2014	11,488.0	11,594.0	5216.40	5091.00
Additive		Type	Amount	Units	Sand Size
Proppant		30/50 WS	108,097.0	lb	30/50
Additive		Type	Amount	Units	Sand Size
Proppant		40/70 WS	3,019.0	lb	40/70
8	8/23/2014	11,324.0	11,435.0	5240.90	5132.40
Additive		Type	Amount	Units	Sand Size
Proppant		30/50 WS	108,097.0	lb	30/50
Additive		Type	Amount	Units	Sand Size
Proppant		40/70 WS	3,019.0	lb	40/70

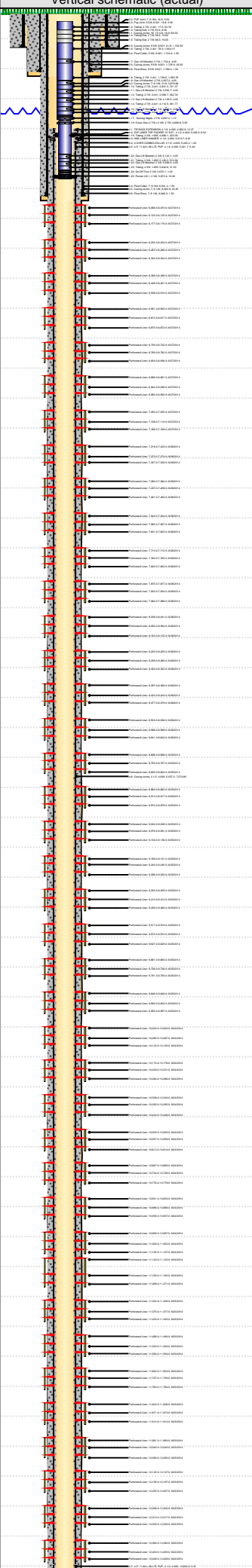


Lease Review
Well Name: RAZOR 26L-3502B

API Number 051233799200		WPC ID 1CO0761035		Well Permit Number		Field Name DJ Horizontal Niobrara		County Weld		State CO					
Well Configuration Type Lateral/Horizontal				Orig KB Elv (ft) 4,751.00		Ground Elevation (ft) 4,734.20		Casing Flange Elevation (ft)		Tubing Head Elevation (ft)		Total Depth (ftKB) 12,760.0			
Original Spud Date 4/15/2014		Completion Date 8/28/2014		Asset Group Redtail		Responsible Engineer Andrew Fish		N/S Dist (ft) 2,244.0		N/S Ref FSL		E/W Dist (ft) 626.0 E/W Ref FWL			
Lot		Quarter 1 NW	Quarter 2 SW	Quarter 3	Quarter 4	Section 26	Section Suffix	Section Type	Township 10 N	Township N/S Dir	Range 58 W	Range E/W Dir	Meridian		
Lateral/Horizontal - Original Hole, 12/26/2014 10:10:58 AM						Additive Proppant		Type 30/50 WS		Amount 108,672.0		Units lb Sand Size 30/50			
MD (ftKB)	D (ft KB)	n ()	c ()	l ()	Vertical schematic (actual)	Logs	Additive Proppant		Type 40/70 WS		Amount 3,243.0		Units lb Sand Size 40/70		
							Stg #	Start Date	Top Depth (ftKB)		Bottom Depth (ftKB)		Vol Clean Pump (bbl)		Vol Slurry (bbl)
68.2	68.2	7.5					9	8/23/2014	11,120.0		11,271.0		5152.80 5050.90		
1,769.4	1,767.7	3.8				Additive Proppant	Type 30/50 WS	Amount 111,140.0		Units lb		Sand Size 30/50			
4,109.6	4,088.4	4.1				Additive Proppant	Type 40/70 WS	Amount 3,195.0		Units lb		Sand Size 40/70			
4,992.8	4,980.1	3.6				Stg #	Start Date	Top Depth (ftKB)		Bottom Depth (ftKB)		Vol Clean Pump (bbl)		Vol Slurry (bbl)	
5,126.3	5,113.5	1.5				10	8/24/2014	10,995.0		11,107.0		5205.50 5106.70			
6,003.0	5,979.5	68.0				Additive Proppant	Type 30/50 WS	Amount 110,236.0		Units lb		Sand Size 30/50			
6,125.0	5,981.0	68.0				Additive Proppant	Type 40/70 WS	Amount 3,255.0		Units lb		Sand Size 40/70			
6,287.1	5,982.9	68.0				Stg #	Start Date	Top Depth (ftKB)		Bottom Depth (ftKB)		Vol Clean Pump (bbl)		Vol Slurry (bbl)	
6,398.0	5,981.8	98.0				11	8/24/2014	10,831.0		10,937.0		5155.30 5053.90			
6,561.0	5,980.7	98.0				Additive Proppant	Type 30/50 WS	Amount 107,475.0		Units lb		Sand Size 30/50			
6,700.1	5,980.5	98.0				Additive Proppant	Type 40/70 WS	Amount 2,701.0		Units lb		Sand Size 40/70			
6,861.9	5,979.4	98.0				Stg #	Start Date	Top Depth (ftKB)		Bottom Depth (ftKB)		Vol Clean Pump (bbl)		Vol Slurry (bbl)	
6,992.1	5,979.3	98.0				12	8/24/2014	10,667.0		10,778.0		5092.40 5003.80			
7,166.0	5,979.2	98.0				Additive Proppant	Type 30/50 WS	Amount 104,270.0		Units lb		Sand Size 30/50			
7,274.0	5,979.1	98.0				Additive Proppant	Type 40/70 WS	Amount 2,945.0		Units lb		Sand Size 40/70			
7,437.0	5,982.3	98.0				Stg #	Start Date	Top Depth (ftKB)		Bottom Depth (ftKB)		Vol Clean Pump (bbl)		Vol Slurry (bbl)	
7,544.0	5,985.4	98.0				13	8/24/2014	10,503.0		10,614.0		5024.80 4951.50			
7,710.0	5,980.7	98.0				Additive Proppant	Type 30/50 WS	Amount 101,922.0		Units lb		Sand Size 30/50			
7,849.1	5,984.5	98.0				Additive Proppant	Type 40/70 WS	Amount 2,780.0		Units lb		Sand Size 40/70			
8,005.9	5,982.7	98.0				Stg #	Start Date	Top Depth (ftKB)		Bottom Depth (ftKB)		Vol Clean Pump (bbl)		Vol Slurry (bbl)	
8,151.9	5,979.5	98.0				14	8/24/2014	10,338.0		10,446.0		5025.50 4947.80			
8,319.9	5,975.7	98.0				Additive Proppant	Type 30/50 WS	Amount 106,235.0		Units lb		Sand Size 30/50			
8,423.9	5,976.5	98.0				Additive Proppant	Type 40/70 WS	Amount 2,762.0		Units lb		Sand Size 40/70			
8,586.0	5,977.3	98.0				Stg #	Start Date	Top Depth (ftKB)		Bottom Depth (ftKB)		Vol Clean Pump (bbl)		Vol Slurry (bbl)	
8,698.2	5,977.1	98.0				15	8/24/2014	10,174.0		10,286.0		4995.00 4929.80			
8,859.9	5,975.3	98.0				Additive Proppant	Type 30/50 WS	Amount 105,433.0		Units lb		Sand Size 30/50			
8,997.0	5,975.1	98.0				Additive Proppant	Type 40/70 WS	Amount 3,097.0		Units lb		Sand Size 40/70			
9,161.1	5,976.3	98.0				Stg #	Start Date	Top Depth (ftKB)		Bottom Depth (ftKB)		Vol Clean Pump (bbl)		Vol Slurry (bbl)	
9,299.9	5,976.6	98.0				16	8/24/2014	10,020.0		10,125.0		5072.80 4990.00			
9,458.0	5,979.9	98.0				Additive Proppant	Type 30/50 WS	Amount 109,862.0		Units lb		Sand Size 30/50			
9,574.1	5,979.6	98.0				Additive Proppant	Type 40/70 WS	Amount 2,699.0		Units lb		Sand Size 40/70			
9,735.9	5,977.8	98.0				Stg #	Start Date	Top Depth (ftKB)		Bottom Depth (ftKB)		Vol Clean Pump (bbl)		Vol Slurry (bbl)	
9,848.1	5,979.3	98.0				17	8/25/2014	9,846.0		9,957.0		5028.60 4980.90			
10,020.0	5,979.7	98.0				Additive Proppant	Type 30/50 WS	Amount 108,785.0		Units lb		Sand Size 30/50			
10,148.9	5,975.6	98.0				Additive Proppant	Type 40/70 WS	Amount 2,997.0		Units lb		Sand Size 40/70			
10,311.0	5,975.0	98.0				Stg #	Start Date	Top Depth (ftKB)		Bottom Depth (ftKB)		Vol Clean Pump (bbl)		Vol Slurry (bbl)	
10,445.9	5,973.6	98.0				18	8/25/2014	9,681.0		9,793.0		5077.10 5046.40			
10,611.9	5,971.7	98.0				Additive Proppant	Type 30/50 WS	Amount 112,370.0		Units lb		Sand Size 30/50			
10,726.0	5,971.5	98.0				Additive Proppant	Type 40/70 WS	Amount 3,061.0		Units lb		Sand Size 40/70			
10,886.2	5,973.6	98.0				Stg #	Start Date	Top Depth (ftKB)		Bottom Depth (ftKB)		Vol Clean Pump (bbl)		Vol Slurry (bbl)	
10,997.0	5,974.1	98.0				19	8/25/2014	9,517.0		9,629.0		5054.50 4999.00			
11,131.9	5,974.3	98.0				Additive Proppant	Type 30/50 WS	Amount 109,232.0		Units lb		Sand Size 30/50			
11,292.0	5,974.2	98.0				Additive Proppant	Type 40/70 WS	Amount 2,953.0		Units lb		Sand Size 40/70			
11,450.1	5,974.4	98.0				Stg #	Start Date	Top Depth (ftKB)		Bottom Depth (ftKB)		Vol Clean Pump (bbl)		Vol Slurry (bbl)	
11,594.2	5,975.1	98.0				20	8/25/2014	9,353.0		9,460.0		5002.30 4979.80			
11,762.1	5,977.8	98.0				Additive Proppant	Type 30/50 WS	Amount 106,093.0		Units lb		Sand Size 30/50			
11,873.0	5,980.8	98.0				Additive Proppant	Type 40/70 WS	Amount 3,064.0		Units lb		Sand Size 40/70			
12,040.0	5,983.1	98.0				Stg #	Start Date	Top Depth (ftKB)		Bottom Depth (ftKB)		Vol Clean Pump (bbl)		Vol Slurry (bbl)	
12,147.0	5,982.9	98.0				21	8/25/2014	9,189.0		9,300.0		5139.40 5083.00			
12,297.9	5,982.2	98.0				Additive Proppant	Type 30/50 WS	Amount 108,885.0		Units lb		Sand Size 30/50			
12,347.1	5,981.5	98.0				Additive Proppant	Type 40/70 WS	Amount 3,172.0		Units lb		Sand Size 40/70			
12,602.0	5,975.1	98.0				Stg #	Start Date	Top Depth (ftKB)		Bottom Depth (ftKB)		Vol Clean Pump (bbl)		Vol Slurry (bbl)	
12,747.4	5,973.0	98.0				22	8/25/2014	9,024.0		9,136.0		5001.30 4963.40			
						Additive Proppant	Type 30/50 WS	Amount 108,580.0		Units lb		Sand Size 30/50			
						Additive Proppant	Type 40/70 WS	Amount 2,934.0		Units lb		Sand Size 40/70			
						Stg #	Start Date	Top Depth (ftKB)		Bottom Depth (ftKB)		Vol Clean Pump (bbl)		Vol Slurry (bbl)	
						23	8/25/2014	8,860.0		8,976.0		4990.80 4955.10			
						Additive Proppant	Type 30/50 WS	Amount 107,886.0		Units lb		Sand Size 30/50			
						Additive Proppant	Type 40/70 WS	Amount 2,935.0		Units lb		Sand Size 40/70			
						Stg #	Start Date	Top Depth (ftKB)		Bottom Depth (ftKB)		Vol Clean Pump (bbl)		Vol Slurry (bbl)	
						24	8/25/2014	8,696.0		8,802.0		4961.60 4955.20			



Lease Review
Well Name: RAZOR 26L-3502B

API Number 051233799200			WPC ID 1CO0761035			Well Permit Number			Field Name DJ Horizontal Niobrara			County Weld			State CO											
Well Configuration Type Lateral/Horizontal						Orig KB Elv (ft) 4,751.00			Ground Elevation (ft) 4,734.20			Casing Flange Elevation (ft)			Tubing Head Elevation (ft)			Total Depth (ftKB) 12,760.0								
Original Spud Date 4/15/2014			Completion Date 8/28/2014			Asset Group Redtail			Responsible Engineer Andrew Fish			N/S Dist (ft) 2,244.0			N/S Ref FSL			E/W Dist (ft) 626.0			E/W Ref FWL					
Lot		Quarter 1 NW		Quarter 2 SW		Quarter 3		Quarter 4		Section 26		Section Suffix		Section Type		Township 10		Township N/S Dir N		Range 58		Range E/W Dir W		Meridian		
Lateral/Horizontal - Original Hole, 12/26/2014 10:11:01 AM												Additive Proppant			Type 30/50 WS			Amount 112,488.0			Units lb			Sand Size 30/50		
												Additive Proppant			Type 40/70 WS			Amount 2,542.0			Units lb			Sand Size 40/70		
Vertical schematic (actual)												Logs														
												Tubing - Production set at 5,683.4ftKB on 9/30/2014 12:00														
												Set Depth (ftKB) 5,683.4			Comment						Run Date 9/30/2014			Pull Date		
Item Des			OD (in)			ID (in)			Len (ft)			Top (ftKB)			Btm (ftKB)											
Tubing Hanger									0.50			17.0			17.5											
Tubing			2 7/8			2.441			32.78			17.5			50.3											
Tubing Sub			2 7/8						8.00			50.3			58.3											
Tubing Sub			2 7/8						10.00			58.3			68.3											
Tubing Sub			2 7/8						10.00			68.3			78.3											
Tubing			2 7/8			2.441			1,654.15			78.3			1,732.4											
Gas Lift Mandrel			2 7/8						4.05			1,732.4			1,736.5											
Tubing			2 7/8			2.441			1,090.76			1,736.5			2,827.2											
Gas Lift Mandrel			2 7/8						4.05			2,827.2			2,831.3											
Tubing			2 7/8			2.441			721.37			2,831.3			3,552.7											
Gas Lift Mandrel			2 7/8						4.05			3,552.7			3,556.7											
Tubing			2 7/8			2.441			552.76			3,556.7			4,109.5											
Gas Lift Mandrel			2 7/8						4.05			4,109.5			4,113.5											
Tubing			2 7/8			2.441			491.77			4,113.5			4,605.3											
Gas Lift Mandrel			2 7/8						4.05			4,605.3			4,609.3											
Tubing			2 7/8			2.441			288.11			4,609.3			4,897.5											
Seating Nipple			2 7/8						1.10			4,897.5			4,898.6											
Cross Over 2 7/8 x 2 3/8			2 7/8						0.50			4,898.6			4,899.1											
Tubing			2 3/8			1.995			223.09			4,899.1			5,122.1											
Gas Lift Mandrel			2 3/8						4.05			5,122.1			5,126.2											
Tubing			2 3/8			1.995			510.36			5,126.2			5,636.6											
Gas Lift Mandrel			2 3/8						4.05			5,636.6			5,640.6											
Tubing			2 3/8			1.995			31.50			5,640.6			5,672.1											
On-Off Tool			2 3/8						1.34			5,672.1			5,673.4											
Packer AS-1			2 3/8						10.00			5,673.4			5,683.4											
Rod Strings																										
Rod Description								Run Date				Pull Date														
Item Des			OD (in)			Len (ft)			Top (ftKB)			Btm (ftKB)														
Other Strings																										
Set Depth (ftKB)			Comment						Run Date			Pull Date														
Item Des			OD (in)			Len (ft)			Top (ftKB)			Btm (ftKB)														
Other In Hole																										
Des			OD (in)			Run Date			Pull Date			Top (ftKB)			Btm (ftKB)											
CFP			4						9/28/2014			6,205.0			6,207.0											
CFP			4						9/28/2014			6,375.0			6,377.0											
CFP			4						9/28/2014			6,533.0			6,535.0											
CFP			4						9/28/2014			6,698.0			6,700.0											
CFP			4						9/28/2014			6,862.0			6,864.0											
CFP			4						9/28/2014			7,010.0			7,012.0											
CFP			4						9/28/2014			7,186.0			7,188.0											
CFP			4						9/29/2014			7,355.0			7,357.0											
CFP			4						9/29/2014			7,519.0			7,521.0											
CFP			4						9/29/2014			7,685.0			7,687.0											
CFP			4						9/29/2014			7,847.0			7,849.0											
CFP			4						9/29/2014			8,006.0			8,008.0											
CFP			4						9/29/2014			8,172.0			8,174.0											
CFP			4						9/29/2014			8,340.0			8,342.0											
CFP			4						9/29/2014			8,504.0			8,506.0											
CFP			4						9/29/2014			8,669.0			8,671.0											
CFP			4						9/29/2014			8,826.0			8,828.0											
CFP			4						9/29/2014			8,995.0			8,997.0											
CFP			4						9/29/2014			9,161.0			9,163.0											
CFP			4						9/29/2014			9,326.0			9,328.0											
CFP			4						9/29/2014			9,482.0			9,484.0											
CFP			4						9/29/2014			9,654.0			9,656.0											
CFP			4						9/29/2014			9,818.0			9,820.0											
CFP			4						9/29/2014			9,982.0			9,984.0											
CFP			4						9/29/2014			10,147.0			10,149.0											
CFP			4						9/29/2014			10,311.0			10,313.0											
CFP			4						9/29/2014			10,475.0			10,477.0											
CFP			4						9/29/2014			10,639.0			10,641.0											
CFP			4						9/29/2014			10,802.0			10,804.0											
CFP			4						9/29/2014			10,968.0			10,970.0											
CFP			4						9/29/2014			11,132.0			11,134.0											



Lease Review
Well Name: RAZOR 26L-3502B

API Number	WPC ID	Well Permit Number	Field Name	County	State
051233799200	1C00761035		DJ Horizontal Niobrara	Weld	CO
Well Configuration Type	Orig KB Elv (ft)	Ground Elevation (ft)	Casing Flange Elevation (ft)	Tubing Head Elevation (ft)	Total Depth (ftKB)
Lateral/Horizontal	4,751.00	4,734.20			12,760.0
Original Spud Date	Completion Date	Asset Group	Responsible Engineer	N/S Dist (ft)	N/S Ref
4/15/2014	8/28/2014	Redtail	Andrew Fish	2,244.0	FSL
				E/W Dist (ft)	E/W Ref
				626.0	FWL
Lot	Quarter 1	Quarter 2	Quarter 3	Quarter 4	Section
	NW	SW			26
					Section Suffix
					Section Type
					Township
					10 N
					Range
					58 W
					Meridian

Lateral/Horizontal - Original Hole, 12/26/2014 10:11:02 AM					Other In Hole					
MD (ftKB)	D (ft KB)	n c l ()	Vertical schematic (actual)	Logs	Des	OD (in)	Run Date	Pull Date	Top (ftKB)	Btm (ftKB)
68.2	68.2	1.0			CFP	4		9/29/2014	11,290.0	11,292.0
1,769.4	1,767.7	1.8			CFP	4		9/29/2014	11,450.0	11,452.0
4,109.6	4,108.4	1.1			CFP	4		9/29/2014	11,620.0	11,622.0
4,992.8	4,990.1	1.6			CFP	4		9/29/2014	11,789.0	11,791.0
5,126.3	5,115.0	1.3			CFP	4		9/29/2014	11,930.0	11,932.0
6,003.0	5,979.0	0.8			CFP	4		9/29/2014	12,106.0	12,108.0
6,125.0	5,991.0	0.6			CFP	4		9/29/2014	12,270.0	12,272.0
6,287.1	5,982.8	0.6			CFP	4		9/29/2014	12,345.0	12,347.0
6,398.0	5,981.8	0.6								
6,561.0	5,980.7	0.6								
6,700.1	5,980.6	0.1								
6,861.9	5,979.6	0.2								
6,992.1	5,979.3	0.3								
7,166.0	5,979.0	0.6								
7,274.0	5,979.3	0.8								
7,437.0	5,982.3	0.2								
7,544.0	5,985.4	0.8								
7,710.0	5,986.7	0.8								
7,849.1	5,984.5	0.8								
8,005.9	5,982.7	0.1								
8,151.9	5,979.5	0.4								
8,319.9	5,975.7	0.8								
8,423.9	5,979.5	0.6								
8,586.0	5,977.3	0.8								
8,698.2	5,977.5	0.3								
8,859.9	5,975.3	0.6								
8,997.0	5,975.1	0.7								
9,161.1	5,979.3	0.5								
9,299.9	5,979.6	0.7								
9,458.0	5,979.9	0.7								
9,574.1	5,979.6	0.5								
9,735.9	5,977.8	0.5								
9,848.1	5,979.3	0.6								
10,020.0	5,979.7	0.1								
10,148.9	5,975.6	0.3								
10,311.0	5,975.6	0.6								
10,445.9	5,973.6	0.6								
10,611.9	5,971.7	0.1								
10,726.0	5,971.5	0.2								
10,886.2	5,973.6	0.8								
10,997.0	5,974.1	0.8								
11,131.9	5,974.3	0.2								
11,292.0	5,974.2	0.2								
11,450.1	5,974.4	0.2								
11,594.2	5,975.1	0.6								
11,762.1	5,977.8	0.8								
11,873.0	5,980.8	0.4								
12,040.0	5,983.1	0.3								
12,147.0	5,982.9	0.2								
12,297.9	5,982.2	0.5								
12,347.1	5,981.0	0.1								
12,602.0	5,975.1	0.1								
12,747.4	5,973.0	0.3								

Bottom Hole Cores				
Date	Core #	Top (ftKB)	Btm (ftKB)	Recov (ft)