

OPERATOR: **WPX ENERGY**

WELL NAME: RWF 434-25

FIELD NAME: RULISON

DRILLING RIG: NABORS 577

API #: 05-045-22000

LOCATION: SEC. 25 T 6S R 94W

SURFACE HOLE: 1117' FSL , 1381' FEL

BOTTOM HOLE: 245' FSL , 1059' FEL

SCALE: 1"=100'



533 Bogart Lane, Unit A
Grand Junction, CO 81505
Office (970) 424-5162

RWF 434-25

COUNTY: GARFIELD

STATE: COLORADO

DRILLING FLUID: LSND

LOGGER: LUKE DAVENPORT

GROUND ELEVATION: 6234'

KELLY BUSHING: 6260'

TVD VS. MD = -83'

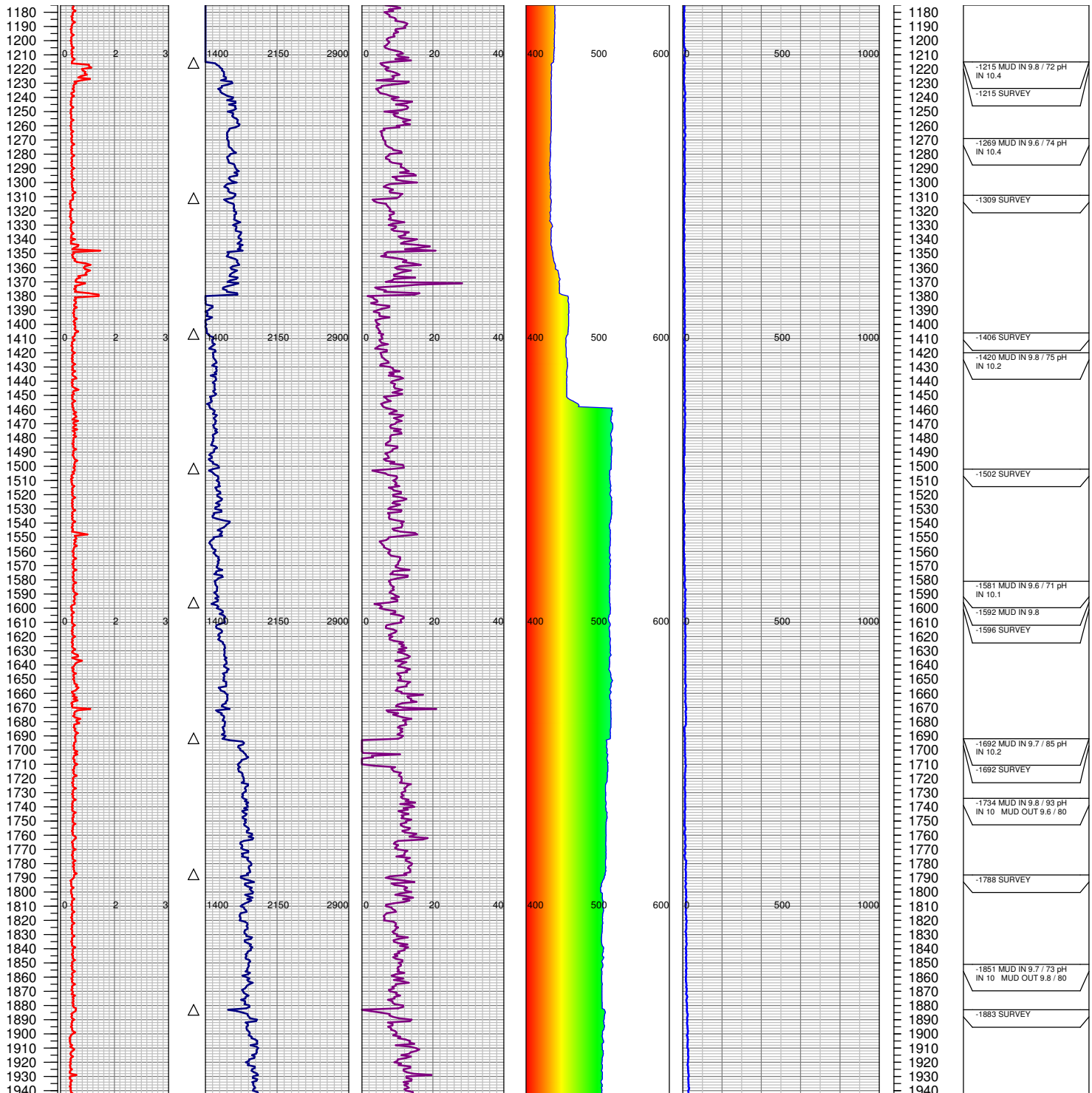
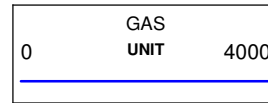
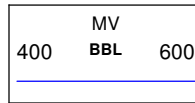
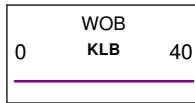
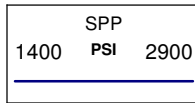
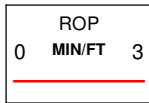
DEPTHS LOGGED: 1175'-8881'

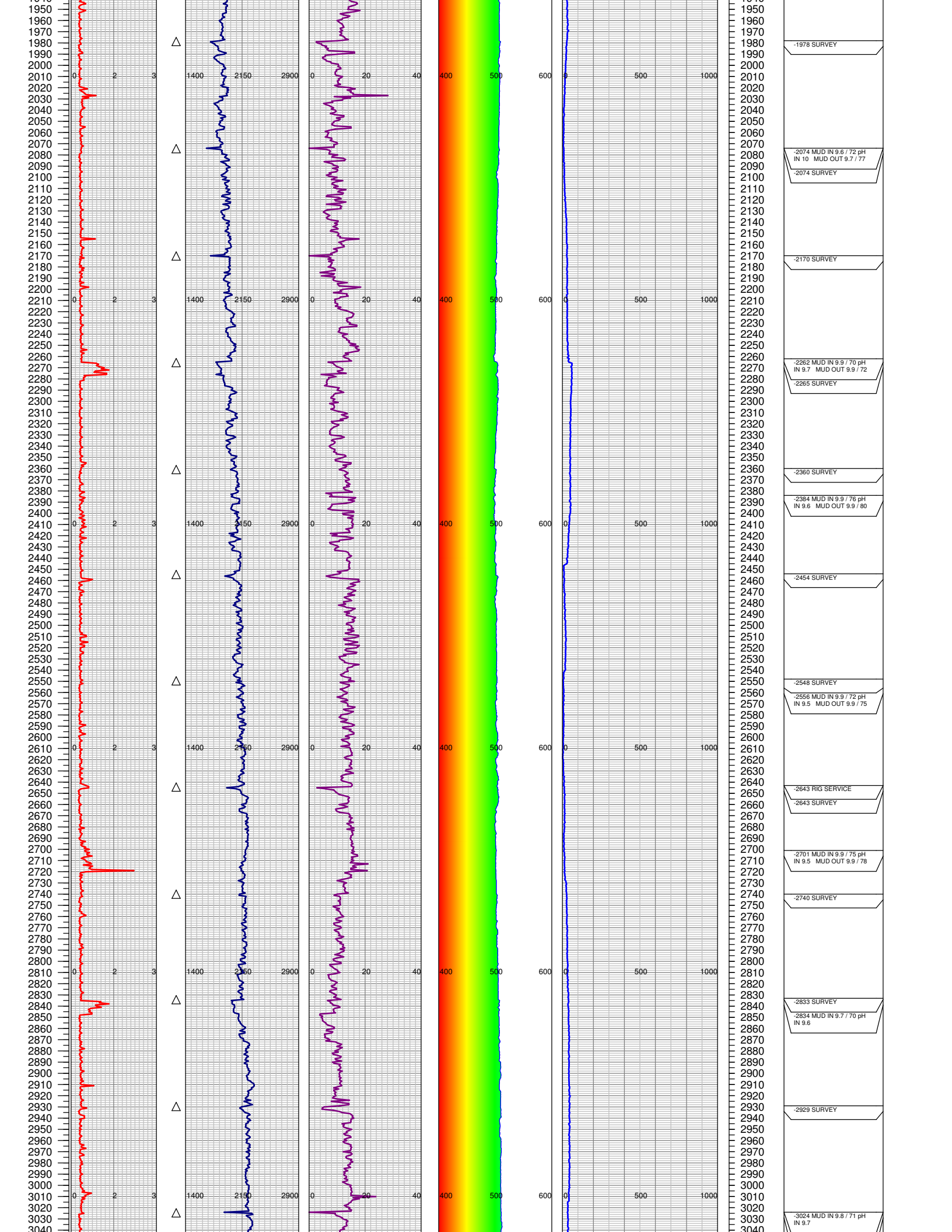
SPUD DATE: 9/26/2014

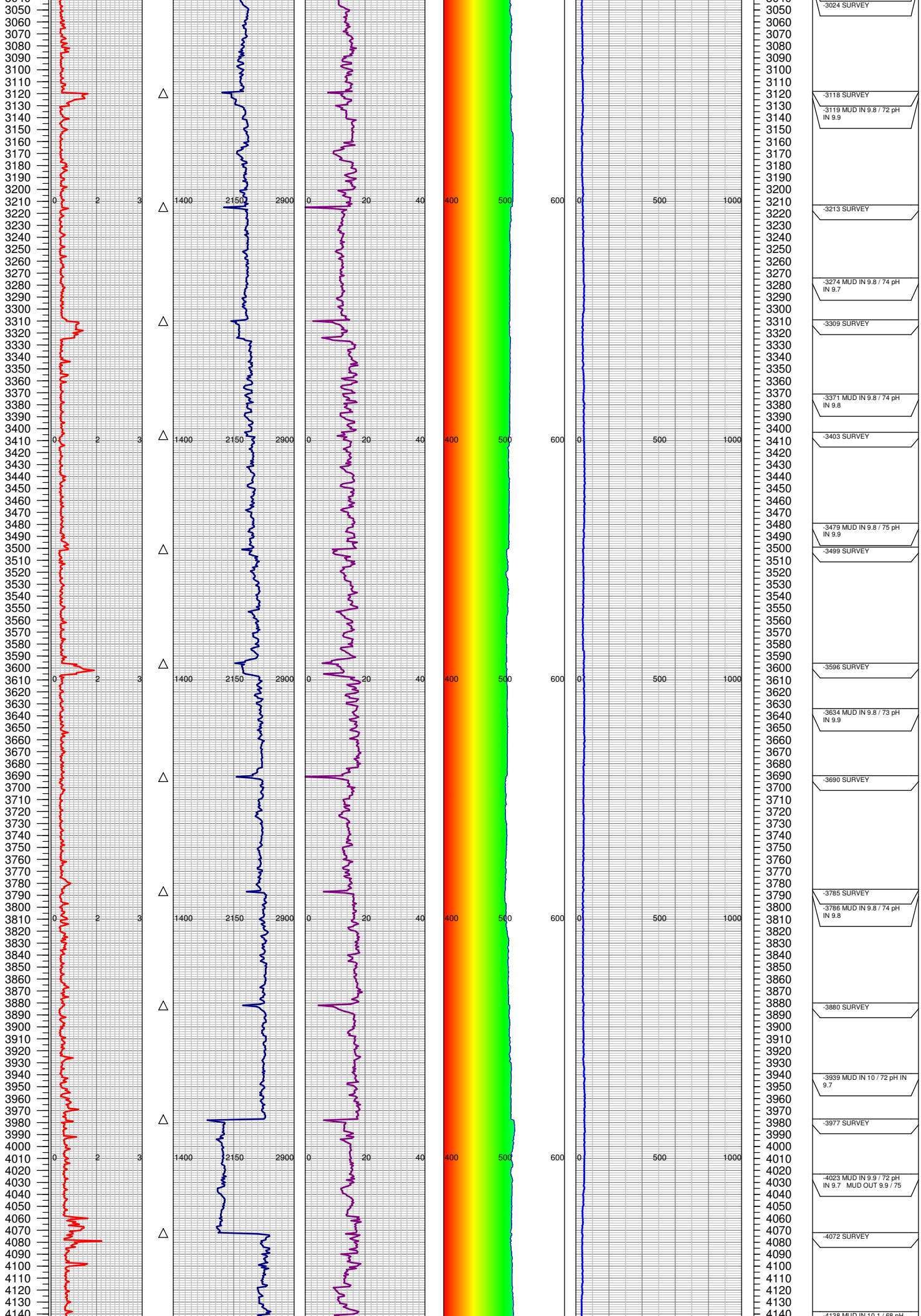
FGS BEGIN LOGGING: 9/29/2014

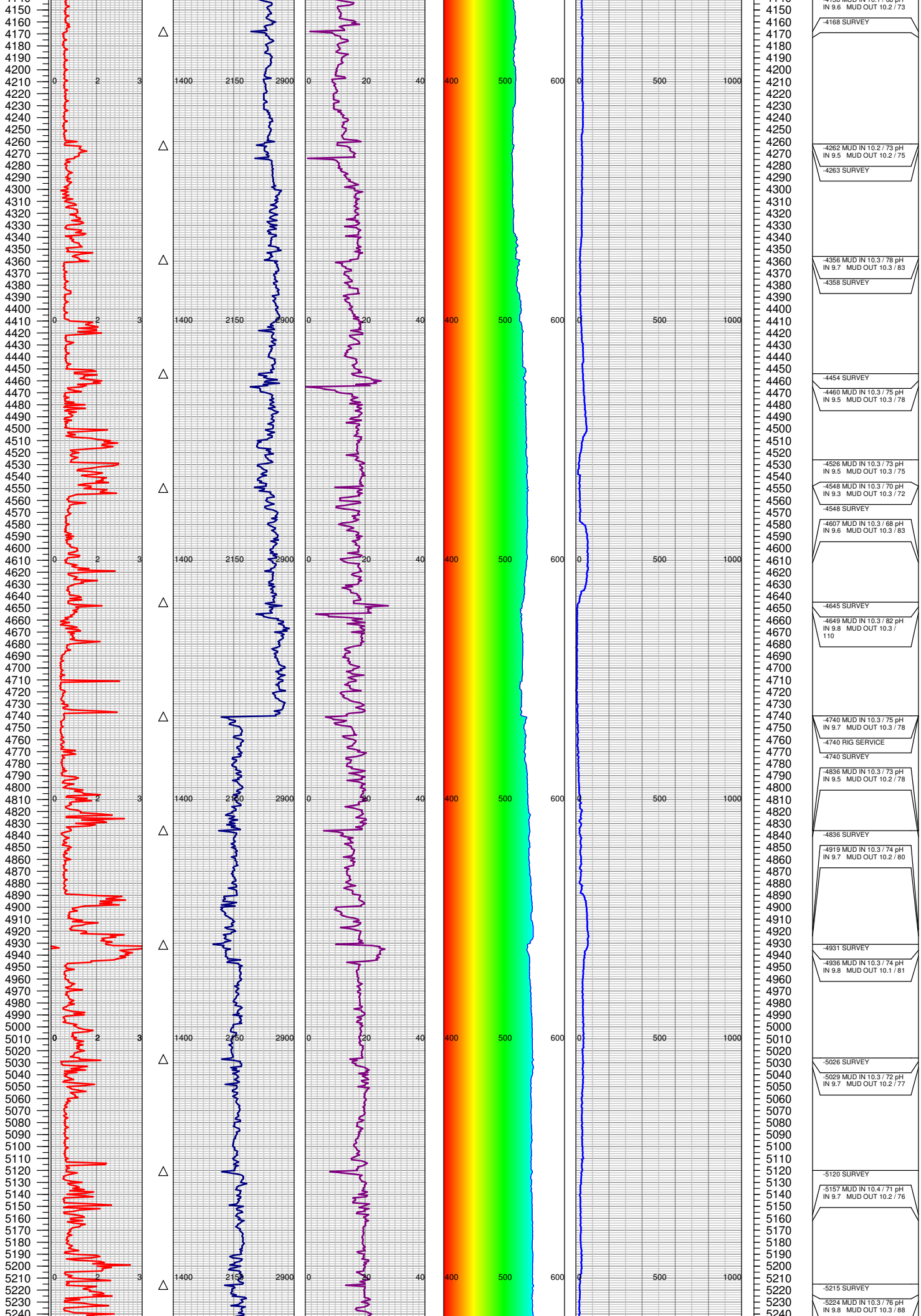
TD DATE: 10/6/2014

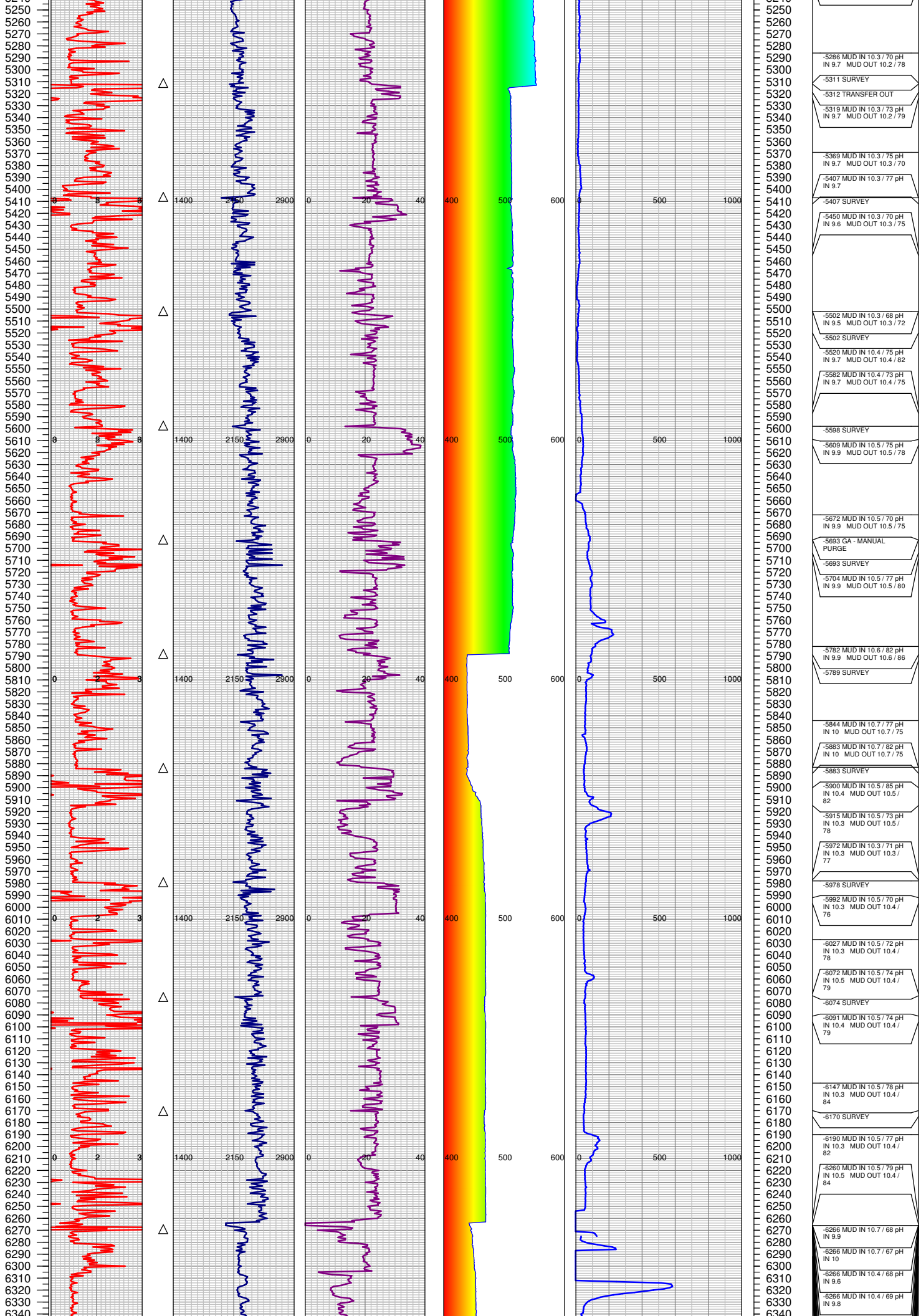
DATES LOGGED: 9/29/2014-10/6/2014



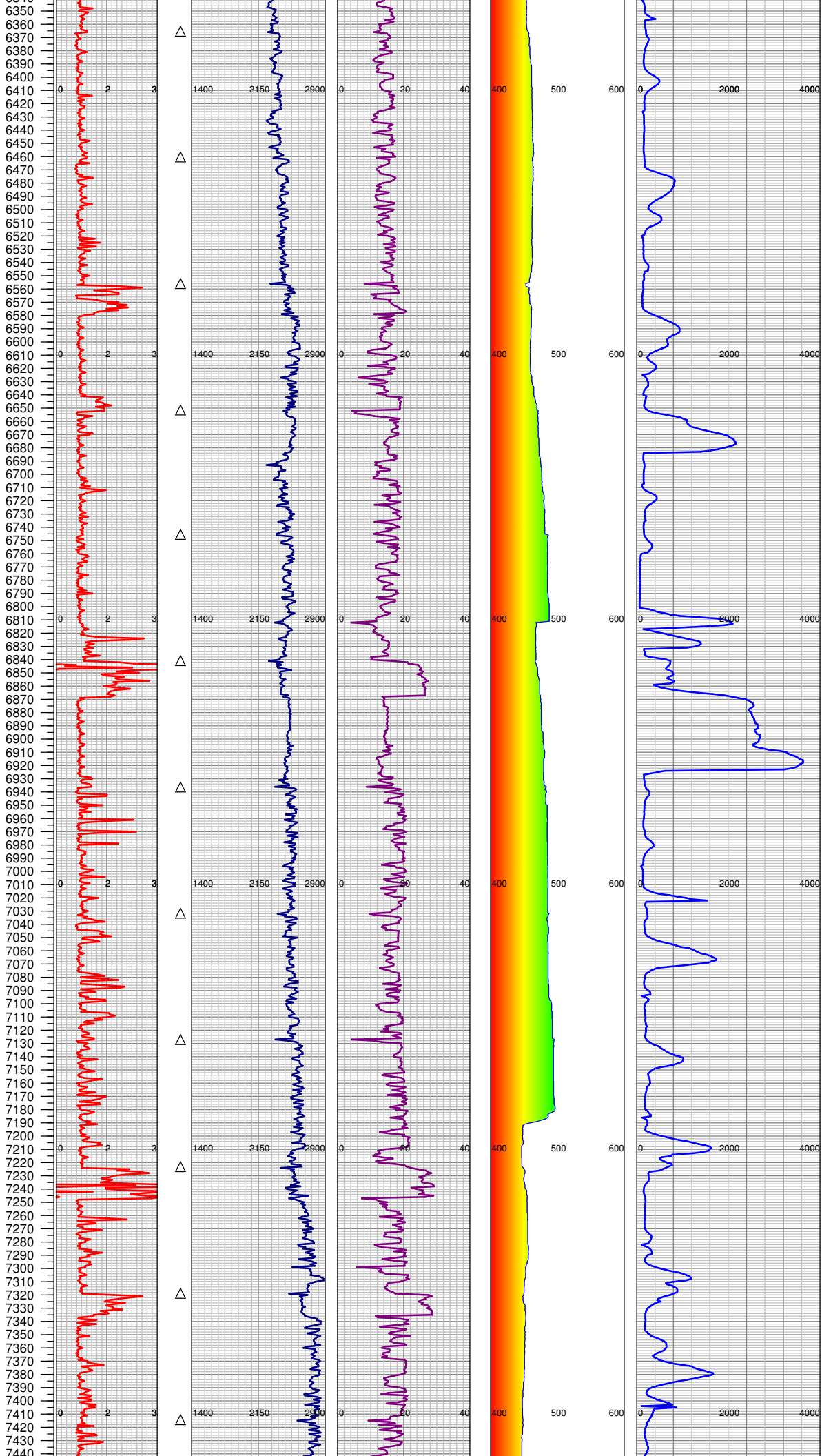




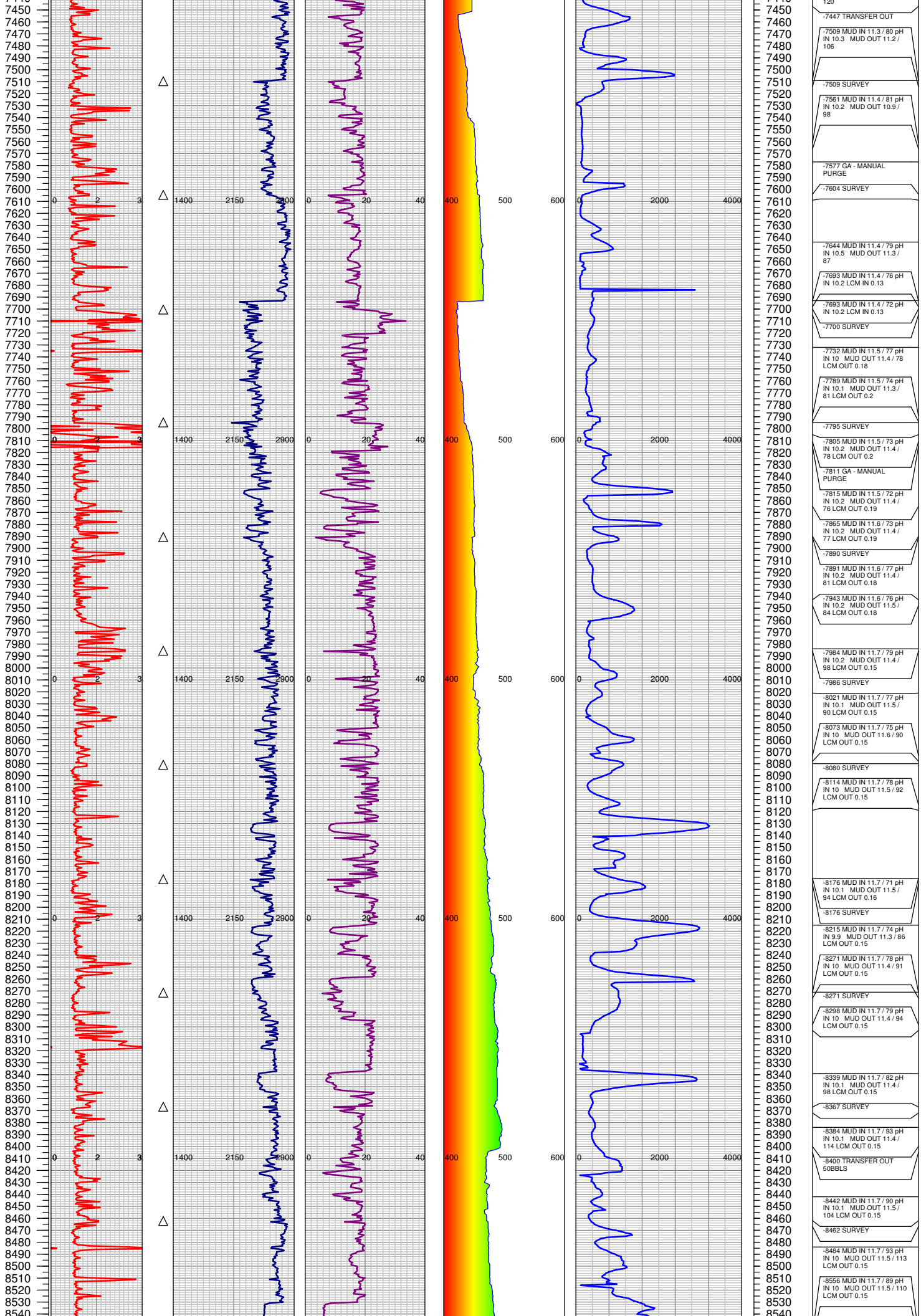




5250	
5260	
5270	
5280	
5290	-5286 MUD IN 10.3 / 70 pH IN 9.7 MUD OUT 10.2 / 78
5300	-5311 SURVEY
5310	-5312 TRANSFER OUT
5320	
5330	-5319 MUD IN 10.3 / 73 pH IN 9.7 MUD OUT 10.2 / 79
5340	
5350	
5360	
5370	-5369 MUD IN 10.3 / 75 pH IN 9.7 MUD OUT 10.3 / 70
5380	
5390	-5407 MUD IN 10.3 / 77 pH IN 9.7
5400	-5407 SURVEY
5410	
5420	-5450 MUD IN 10.3 / 70 pH IN 9.6 MUD OUT 10.3 / 75
5430	
5440	
5450	
5460	
5470	
5480	
5490	
5500	
5510	-5502 MUD IN 10.3 / 68 pH IN 9.5 MUD OUT 10.3 / 72
5520	-5502 SURVEY
5530	
5540	-5520 MUD IN 10.4 / 75 pH IN 9.7 MUD OUT 10.4 / 82
5550	
5560	-5582 MUD IN 10.4 / 73 pH IN 9.7 MUD OUT 10.4 / 75
5570	
5580	
5590	
5600	-5598 SURVEY
5610	
5620	-5609 MUD IN 10.5 / 75 pH IN 9.9 MUD OUT 10.5 / 78
5630	
5640	
5650	
5660	
5670	
5680	-5672 MUD IN 10.5 / 70 pH IN 9.9 MUD OUT 10.5 / 75
5690	
5700	-5693 GA - MANUAL PURGE
5710	-5693 SURVEY
5720	
5730	-5704 MUD IN 10.5 / 77 pH IN 9.9 MUD OUT 10.5 / 80
5740	
5750	
5760	
5770	
5780	
5790	-5782 MUD IN 10.6 / 82 pH IN 9.9 MUD OUT 10.6 / 86
5800	-5789 SURVEY
5810	
5820	
5830	
5840	
5850	-5844 MUD IN 10.7 / 77 pH IN 10 MUD OUT 10.7 / 75
5860	
5870	-5883 MUD IN 10.7 / 82 pH IN 10 MUD OUT 10.7 / 75
5880	
5890	-5883 SURVEY
5900	
5910	-5900 MUD IN 10.5 / 85 pH IN 10.4 MUD OUT 10.5 / 82
5920	
5930	-5915 MUD IN 10.5 / 73 pH IN 10.3 MUD OUT 10.5 / 78
5940	
5950	-5972 MUD IN 10.3 / 71 pH IN 10.3 MUD OUT 10.3 / 77
5960	
5970	
5980	-5978 SURVEY
5990	
6000	-5992 MUD IN 10.5 / 70 pH IN 10.3 MUD OUT 10.4 / 76
6010	
6020	
6030	-6027 MUD IN 10.5 / 72 pH IN 10.3 MUD OUT 10.4 / 78
6040	
6050	-6072 MUD IN 10.5 / 74 pH IN 10.5 MUD OUT 10.4 / 79
6060	
6070	
6080	-6074 SURVEY
6090	
6100	-6091 MUD IN 10.5 / 74 pH IN 10.4 MUD OUT 10.4 / 79
6110	
6120	
6130	
6140	
6150	-6147 MUD IN 10.5 / 78 pH IN 10.3 MUD OUT 10.4 / 84
6160	
6170	-6170 SURVEY
6180	
6190	
6200	-6190 MUD IN 10.5 / 77 pH IN 10.3 MUD OUT 10.4 / 82
6210	
6220	-6260 MUD IN 10.5 / 79 pH IN 10.5 MUD OUT 10.4 / 84
6230	
6240	
6250	
6260	
6270	-6266 MUD IN 10.7 / 68 pH IN 9.9
6280	
6290	-6266 MUD IN 10.7 / 67 pH IN 10
6300	
6310	-6266 MUD IN 10.4 / 68 pH IN 9.6
6320	
6330	-6266 MUD IN 10.4 / 69 pH IN 9.8
6340	



6350	-6266 MUD IN 10.6 / 73 pH IN 10.3
6360	-6266 MUD IN 10.6 / 83 pH IN 10.5
6370	-6266 MUD IN 10.6 / 72 pH IN 10.1
6380	-6266 MUD IN 10.7 / 70 pH IN 10.3
6400	-6266 RIG SERVICE
6410	-6266 TRANSFER IN
6420	-6266 GA - MANUAL PURGE
6430	-6266 GA - CELL MOTOR STOPPED CALLED PASON
6440	-6266 MUD IN 10.5 / 69 pH IN 9.5
6450	-6266 MUD IN 10.7 / 83 pH IN 9.5
6460	-6266 MUD IN 10.6 / 72 pH IN 10.1 MUD OUT 10.4 / 78
6470	-6266 MUD IN 10.7 / 68 pH IN 9.5
6480	-6268 SURVEY
6490	-6269 MUD IN 10.6 / 74 pH IN 10.1 MUD OUT 10.6 / 78
6500	-6275 NOTICE CHANGE IN GAS SCALE AT 6275 FROM 0-1000 TO 0-4000
6510	-6292 MUD IN 10.6 / 72 pH IN 10.1 MUD OUT 10.5 / 80
6520	-6364 SURVEY
6530	-6365 MUD IN 10.6 / 71 pH IN 10.1 MUD OUT 10.5 / 78
6540	-6365 RIG SERVICE
6550	-6401 MUD IN 10.7 / 73 pH IN 10.4 MUD OUT 10.6 / 81
6560	-6460 MUD IN 10.8 / 71 pH IN 10.5 MUD OUT 10.7 / 79
6570	-6460 SURVEY
6580	-6517 MUD IN 10.8 / 71 pH IN 10.3 MUD OUT 10.7 / 79
6590	-6555 SURVEY
6600	-6571 MUD IN 10.8 / 70 pH IN 10.1 MUD OUT 10.6 / 76
6610	-6646 MUD IN 10.8 / 73 pH IN 10.3 MUD OUT 10.7 / 82
6620	-6650 SURVEY
6630	-6693 MUD IN 10.8 / 72 pH IN 10.2 MUD OUT 10.7 / 79
6640	-6744 SURVEY
6650	-6746 MUD IN 10.9 / 76 pH IN 10.4 MUD OUT 10.8 / 84
6660	-6811 MUD IN 10.9 / 80 pH IN 10.5
6670	-6811 MUD IN 10.9 / 84 pH IN 10.5
6680	-6811 MUD IN 11 / 78 pH IN 10.2
6690	-6811 MUD IN 11 / 75 pH IN 10
6700	-6811 MUD IN 10.9 / 73 pH IN 10.1
6710	-6811 MUD IN 10.9 / 78 pH IN 10.2
6720	-6841 SURVEY
6730	-6844 MUD IN 10.9 / 77 pH IN 10.3 MUD OUT 10.8 / 84
6740	-6874 MUD IN 10.9 / 76 pH IN 10.3 MUD OUT 10.8 / 83
6750	-6936 MUD IN 10.9 / 75 pH IN 10.2 MUD OUT 10.8 / 81
6760	-6936 SURVEY
6770	-6936 GA - MANUAL PURGE
6780	-6974 MUD IN 11 / 74 pH IN 10.3 MUD OUT 10.9 / 82
6790	-7031 SURVEY
6800	-7062 MUD IN 11 / 74 pH IN 10.3 MUD OUT 10.9 / 82
6810	-7127 SURVEY
6820	-7175 MUD IN 10.9 / 83 pH IN 10.3 MUD OUT 10.7 / 82
6830	-7178 TRANSFER OUT
6840	-7222 SURVEY
6850	-7223 MUD IN 11 / 76 pH IN 10.2 MUD OUT 10.9 / 82
6860	-7247 MUD IN 11.1 / 78 pH IN 10.2 MUD OUT 11 / 85
6870	-7319 MUD IN 11.2 / 80 pH IN 10.4 MUD OUT 11.1 / 84
6880	-7319 SURVEY
6890	-7408 MUD IN 11.2 / 98 pH IN 10.5 MUD OUT 11.1 / 104
6900	
6910	-7415 SURVEY
6920	-7439 MUD IN 11.4 / 110 pH IN 10.3 MUD OUT 11.3 / 74
6930	
6940	
6950	
6960	
6970	
6980	
6990	
7000	
7010	
7020	
7030	
7040	
7050	
7060	
7070	
7080	
7090	
7100	
7110	
7120	
7130	
7140	
7150	
7160	
7170	
7180	
7190	
7200	
7210	
7220	
7230	
7240	
7250	
7260	
7270	
7280	
7290	
7300	
7310	
7320	
7330	
7340	
7350	
7360	
7370	
7380	
7390	
7400	
7410	
7420	
7430	
7440	



7450
7460
7470
7480
7490
7500
7510
7520
7530
7540
7550
7560
7570
7580
7590
7600
7610
7620
7630
7640
7650
7660
7670
7680
7690
7700
7710
7720
7730
7740
7750
7760
7770
7780
7790
7800
7810
7820
7830
7840
7850
7860
7870
7880
7890
7900
7910
7920
7930
7940
7950
7960
7970
7980
7990
8000
8010
8020
8030
8040
8050
8060
8070
8080
8090
8100
8110
8120
8130
8140
8150
8160
8170
8180
8190
8200
8210
8220
8230
8240
8250
8260
8270
8280
8290
8300
8310
8320
8330
8340
8350
8360
8370
8380
8390
8400
8410
8420
8430
8440
8450
8460
8470
8480
8490
8500
8510
8520
8530
8540

7447 TRANSFER OUT

7509 MUD IN 11.3 / 80 pH
IN 10.3 MUD OUT 11.2 /
106

7509 SURVEY

7561 MUD IN 11.4 / 81 pH
IN 10.2 MUD OUT 10.9 /
98

7577 GA - MANUAL
PURGE

7604 SURVEY

7644 MUD IN 11.4 / 79 pH
IN 10.5 MUD OUT 11.3 /
87

7693 MUD IN 11.4 / 76 pH
IN 10.2 LCM IN 0.13

7693 MUD IN 11.4 / 72 pH
IN 10.2 LCM IN 0.13

7700 SURVEY

7732 MUD IN 11.5 / 77 pH
IN 10 MUD OUT 11.4 / 78
LCM OUT 0.18

7789 MUD IN 11.5 / 74 pH
IN 10.1 MUD OUT 11.3 /
81 LCM OUT 0.2

7795 SURVEY

7805 MUD IN 11.5 / 73 pH
IN 10.2 MUD OUT 11.4 /
78 LCM OUT 0.2

7811 GA - MANUAL
PURGE

7815 MUD IN 11.5 / 72 pH
IN 10.2 MUD OUT 11.4 /
76 LCM OUT 0.19

7865 MUD IN 11.6 / 73 pH
IN 10.2 MUD OUT 11.4 /
77 LCM OUT 0.19

7890 SURVEY

7891 MUD IN 11.6 / 77 pH
IN 10.2 MUD OUT 11.4 /
81 LCM OUT 0.18

7943 MUD IN 11.6 / 76 pH
IN 10.2 MUD OUT 11.5 /
84 LCM OUT 0.18

7984 MUD IN 11.7 / 79 pH
IN 10.2 MUD OUT 11.4 /
98 LCM OUT 0.15

7986 SURVEY

8021 MUD IN 11.7 / 77 pH
IN 10.1 MUD OUT 11.5 /
90 LCM OUT 0.15

8073 MUD IN 11.7 / 75 pH
IN 10 MUD OUT 11.6 / 90
LCM OUT 0.15

8080 SURVEY

8114 MUD IN 11.7 / 78 pH
IN 10 MUD OUT 11.5 / 92
LCM OUT 0.15

8176 MUD IN 11.7 / 71 pH
IN 10.1 MUD OUT 11.5 /
84 LCM OUT 0.16

8176 SURVEY

8215 MUD IN 11.7 / 74 pH
IN 9.9 MUD OUT 11.3 / 86
LCM OUT 0.15

8271 MUD IN 11.7 / 76 pH
IN 10 MUD OUT 11.4 / 91
LCM OUT 0.15

8271 SURVEY

8298 MUD IN 11.7 / 79 pH
IN 10 MUD OUT 11.4 / 94
LCM OUT 0.15

8339 MUD IN 11.7 / 82 pH
IN 10.1 MUD OUT 11.4 /
98 LCM OUT 0.15

8367 SURVEY

8384 MUD IN 11.7 / 93 pH
IN 10.1 MUD OUT 11.4 /
114 LCM OUT 0.15

8400 TRANSFER OUT
50BBLs

8442 MUD IN 11.7 / 90 pH
IN 10.1 MUD OUT 11.5 /
104 LCM OUT 0.15

8462 SURVEY

8484 MUD IN 11.7 / 93 pH
IN 10 MUD OUT 11.5 / 113
LCM OUT 0.15

8556 MUD IN 11.7 / 89 pH
IN 10 MUD OUT 11.5 / 110
LCM OUT 0.15

