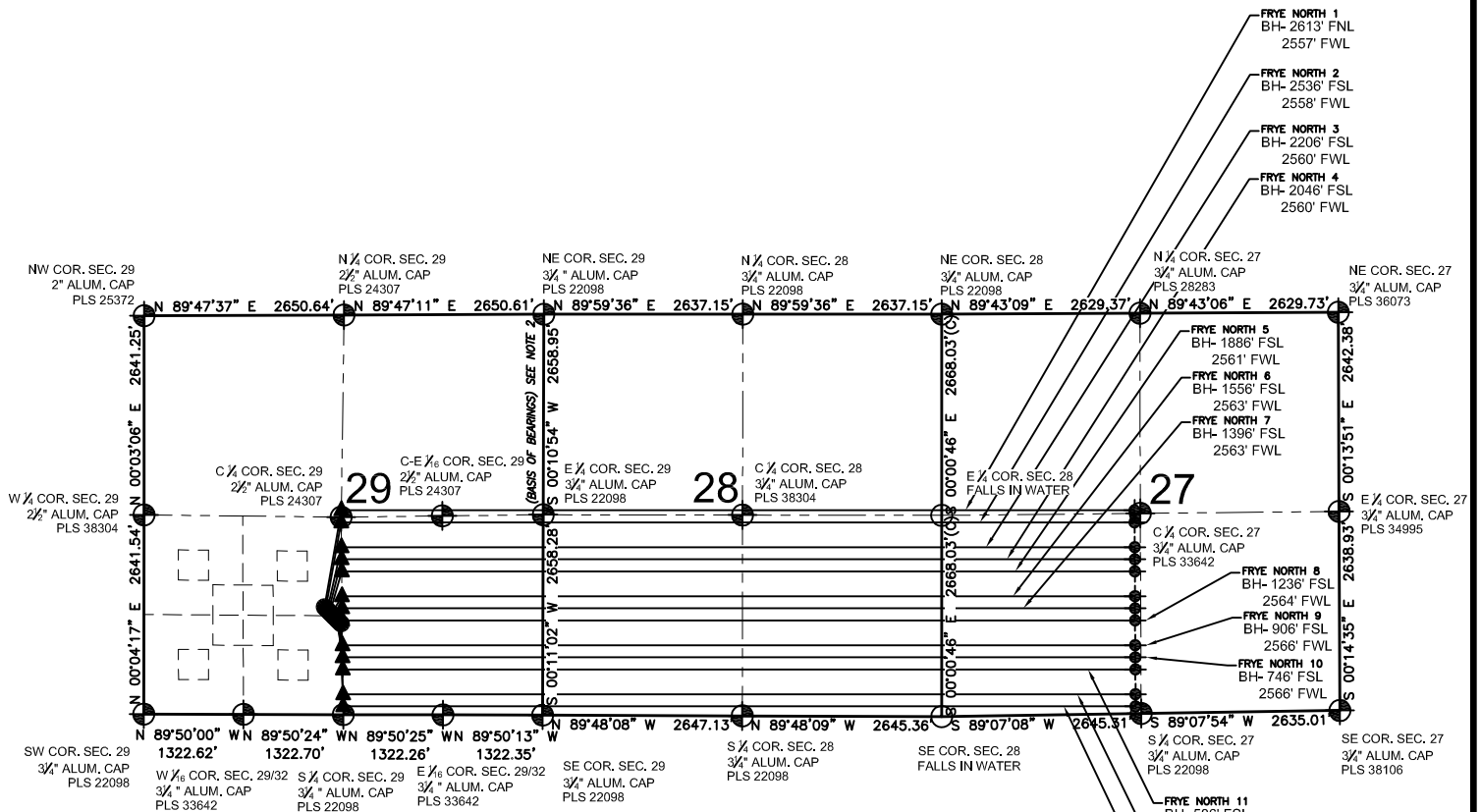


FRYE 29-H PAD MULTI-WELL PLAN

SECTION 29, TOWNSHIP 7 NORTH, RANGE 67 WEST, 6TH P.M.



NOTES:

- FRYE NORTH 1 TO BE AT 1427' FSL, 2394' FWL.
BOTTOM HOLE AT 2613' FNL & 2557' FWL. SEC 27.
- FRYE NORTH 2 TO BE AT 1408' FSL, 2412' FWL.
BOTTOM HOLE AT 2536' FSL & 2558' FWL. SEC 27.
- FRYE NORTH 3 TO BE AT 1390' FSL, 2430' FWL.
BOTTOM HOLE AT 2206' FSL & 2560' FWL. SEC 27.
- FRYE NORTH 4 TO BE AT 1372' FSL, 2449' FWL.
BOTTOM HOLE AT 2046' FSL & 2560' FWL. SEC 27.
- FRYE NORTH 5 TO BE AT 1353' FSL, 2467' FWL.
BOTTOM HOLE AT 1886' FSL & 2561' FWL. SEC 27.
- FRYE NORTH 6 TO BE AT 1335' FSL, 2486' FWL.
BOTTOM HOLE AT 1556' FSL & 2563' FWL. SEC 27.
- FRYE NORTH 7 TO BE AT 1317' FSL, 2504' FWL.
BOTTOM HOLE AT 1396' FSL & 2563' FWL. SEC 27.
- FRYE NORTH 8 TO BE AT 1298' FSL, 2523' FWL.
BOTTOM HOLE AT 1236' FSL & 2564' FWL. SEC 27.
- FRYE NORTH 9 TO BE AT 1280' FSL, 2541' FWL.
BOTTOM HOLE AT 906' FSL & 2566' FWL. SEC 27.
- FRYE NORTH 10 TO BE AT 1262' FSL, 2559' FWL.
BOTTOM HOLE AT 746' FSL & 2566' FWL. SEC 27.
- FRYE NORTH 11 TO BE AT 1243' FSL, 2578' FWL.
BOTTOM HOLE AT 586' FSL & 2567' FWL. SEC 27.
- FRYE NORTH 12 TO BE AT 1225' FSL, 2596' FWL.
BOTTOM HOLE AT 256' FSL & 2569' FWL. SEC 27.
- FRYE NORTH 13 TO BE AT 1207' FSL, 2615' FWL.
BOTTOM HOLE AT 96' FSL & 2570' FWL. SEC 27.

LEGEND

- = EXISTING MONUMENT ◆ = BOTTOM HOLE
- = CALCULATED POSITION ▲ = LANDING POINT
- = PROPOSED WELL LP = LANDING POINT
- ◆ = EXISTING WELL BH = BOTTOM HOLE

NOTES:

1. THIS FIELD SURVEY CONFORMS TO THE MINIMUM STANDARDS SET BY THE C.O.G.C.C., RULE NO. 215
2. BEARINGS AND DISTANCE SHOWN HEREON ARE GRID AND BASED ON THE COLORADO STATE PLANE COORDINATE SYSTEM, NAD 83/2011 BETWEEN MONUMENTS AS LABELED HEREON AND ELEVATIONS SHOWN ARE NAVD 88, AS DERIVED BY GPS OBSERVATIONS.
3. GRID DISTANCES ARE SHOWN, AS MEASURED IN THE FIELD, WITH TIES TO WELLS MEASURED PERPENDICULAR TO SECTION LINES.

PREPARED BY:



EXTRACTION OIL & GAS

FIELD DATE: 07-14-14	PAD NAME: FRYE 29-H
DRAWING DATE: 07-15-14	SURFACE LOCATION: E 1/2 SW 1/4, SEC. 29, T7N, R67W, 6TH P.M.
BY: MDC	CHECKED: WDW
WELD COUNTY, COLORADO	

