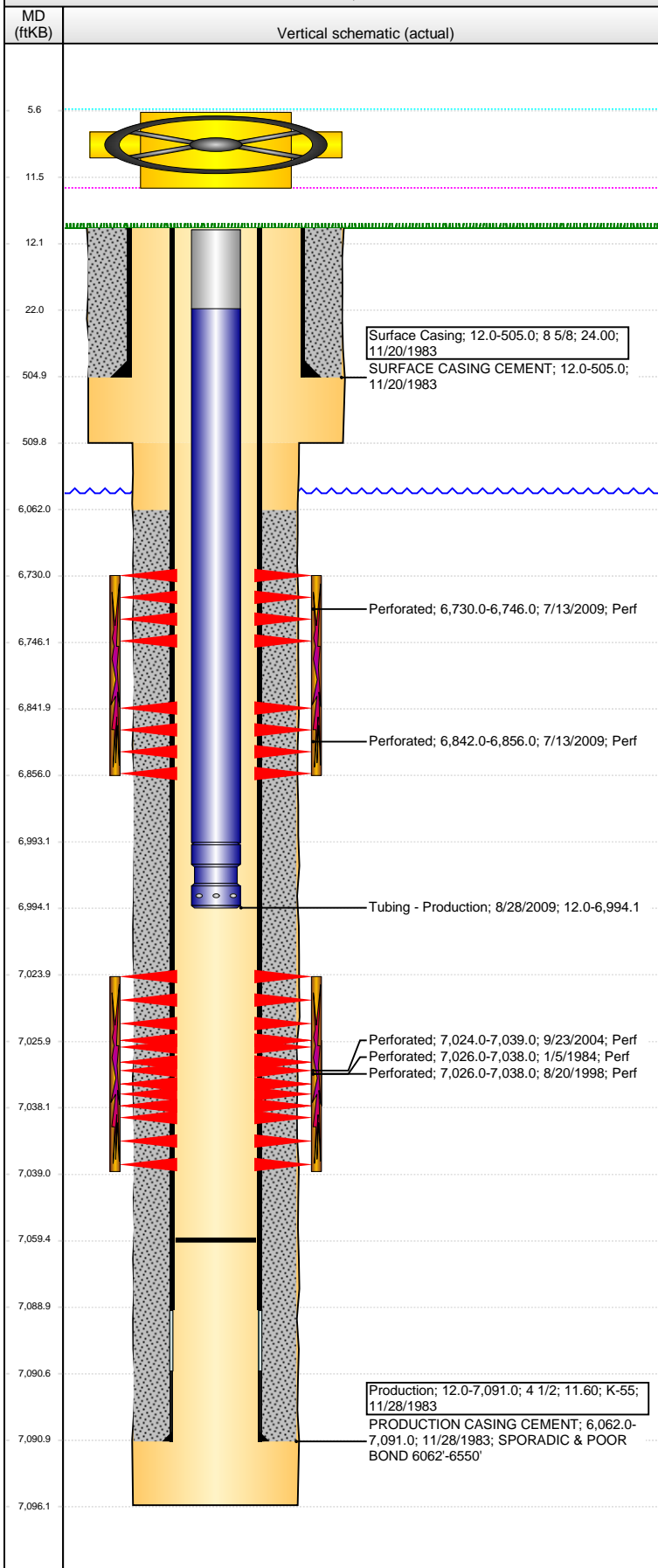


Well Name: DOME FARM STATE 36-02

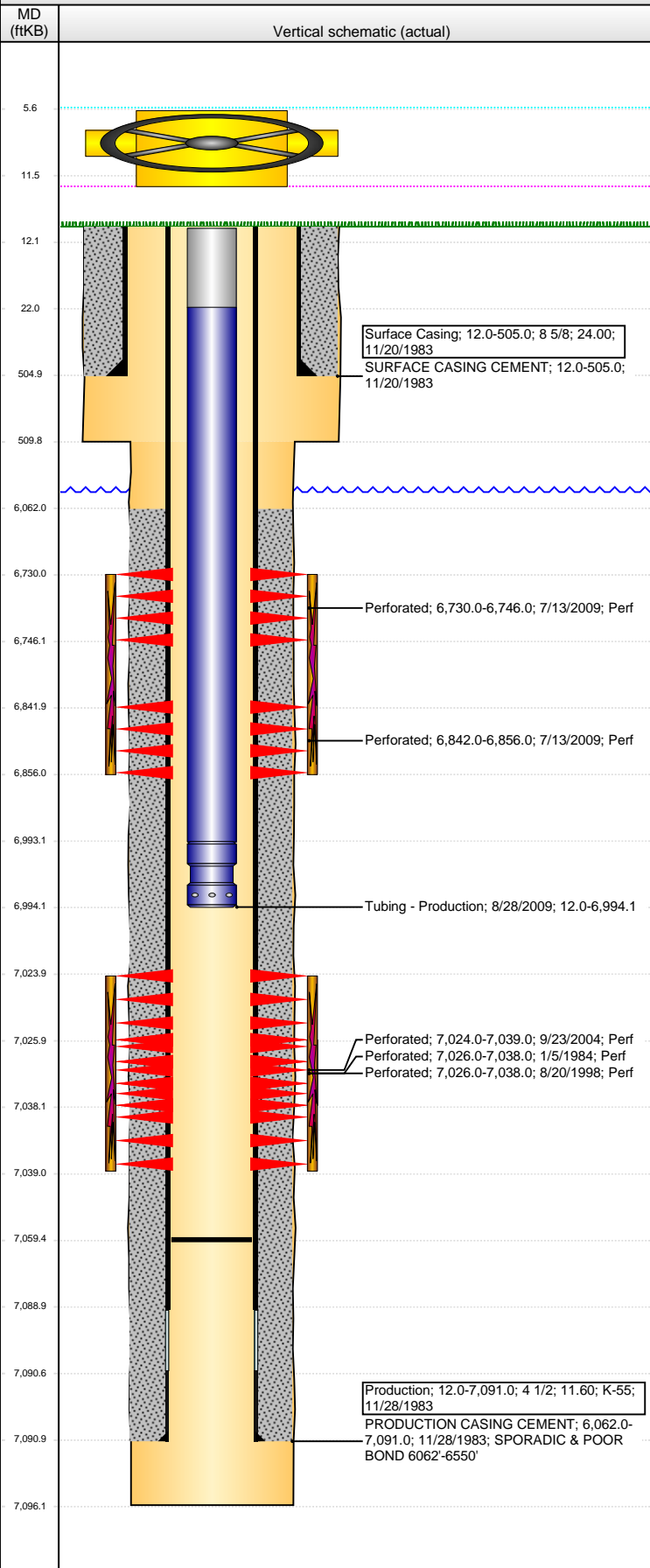
VERTICAL - ORIGINAL HOLE, 12/24/2014 10:25:10 AM



Well Header			
API	Business Unit	District	Well Config
05-123-11486	DJ BASIN	15	VERTICAL
Original KB Elevation (ft)	KB - GL / MSL (ftKB)	Spud Date	P & A Date
4,742.00	12.00	11/18/1983	
Comment			
Directions To Well			
WCR 49 & WCR 52, W 0.3, S 0.1 INTO THRU GREEN GATES. (2001 KEY)			
Congressional Location			
Quarter 1	Quarter 2	Quarter 3	Quarter 4
		NW	NE
Section	Township	Twnshp N...	Range
36	5 N		65 W
Bottom Hole Location			
North-South Distance (ft)	From N or S Line	East-West Distance (ft)	From E or W Line
Plug Back Total Depths			
Date	Depth (ftKB)	Method	Com
10/2/2004	7,052.0	TAG	C/O LAND TBG
7/10/2009	7,055.6	TAG	
8/28/2009	7,059.5	TAG	C/O SAND PLUG TO 7059.51' KB.
Wellbore Sections			
Section Des	Size (in)	Act Top, MD (ftKB)	Act Btm, MD (ftKB)
SURFACE	12 1/4	12.0	510.0
PRODUCTION	7 7/8	510.0	7,096.0
Zone Statuses			
Zone Name	Status Date	Status	Job
CODELL	8/30/1984	PR	DRILLING/COMPLETION - ORIGINAL, 11/18/1983 00:00
CODELL	8/31/1998	PR	RE-FRAC, 8/18/1998 00:00
CODELL	11/2/2004	PR	TRI-FRAC, 9/22/2004 00:00
NIOBRARA	7/13/2009	PR	RECOMPLETION, 7/8/2009 13:30
Casing Strings			
Surface Casing, 505.0ftKB			
Casing Description	Run Date	OD (in)	Wt/Len (L...)
Surface Casing	11/20/1983	8 5/8	24.00
Grade	Top, MD (ft...)	MD (ftKB)	
K-55	12.0	505.0	
Production, 7,091.0ftKB			
Casing Description	Run Date	OD (in)	Wt/Len (L...)
Production	11/28/1983	4 1/2	11.60
Grade	Top, MD (ft...)	MD (ftKB)	
K-55	12.0	7,091.0	
Cement			
Description	Top Depth (ftKB)	Bottom Depth (ftKB)	
SURFACE CASING CEMENT	12.0	505.0	
Description	Top Depth (ftKB)	Bottom Depth (ftKB)	
PRODUCTION CASING CEMENT	6,062.0	7,091.0	
Tubing Components			
Item Des	OD (in)	Wt (lb/ft)	Grade
Tubing Pup Joint	2 3/8	4.70	J-55
Tubing	2 3/8	4.70	J-55
Notched Seating Nipple	2 3/8		
Jts	Len (ft)	Btm (ftKB)	Btm (TVD) (ftKB)
1	9.83	21.9	
227	6,971.17	6,993.0	
1	1.10	6,994.1	
Perforation Data			
Zone	Bnch/St g	Entered Shot Total	Date
NIOBRARA, ORIGINAL HOLE	A	64	7/13/2009
NIOBRARA, ORIGINAL HOLE	B	56	7/13/2009
CODELL, ORIGINAL HOLE		30	9/23/2004
CODELL, ORIGINAL HOLE		26	1/5/1984
CODELL, ORIGINAL HOLE		25	8/20/1998
Top (ftKB)	Btm (ftKB)		
6,730.00	6,746.00		
6,842.00	6,856.00		
7,024.00	7,039.00		
7,026.00	7,038.00		
7,026.00	7,038.00		
Stimulations & Treatments			
Date	Zone	Primary Job Type	
1/9/1984	CODELL, ORIGINAL HOLE	DRILLING/COMPLETION - ORIGINAL	
Technical Result	Tech Result Details	Tech Result Note	
Comment			
SCREENED OUT @ 4PPG STAGE			
Date	Zone	Primary Job Type	
8/25/1998	CODELL, ORIGINAL HOLE	RE-FRAC	
Technical Result	Tech Result Details	Tech Result Note	
Comment			

Well Name: DOME FARM STATE 36-02

VERTICAL - ORIGINAL HOLE, 12/24/2014 10:25:13 AM



Stimulations & Treatments

Date	Zone	Primary Job Type
9/28/2004	CODELL, ORIGINAL HOLE	TRI-FRAC
Technical Result	Tech Result Details	Tech Result Note
Success		
According to Plan		
Comment		

Date	Zone	Primary Job Type
7/21/2009	NIOBRARA, ORIGINAL HOLE	RECOMPLETION
Technical Result	Tech Result Details	Tech Result Note
Success		
According to Plan		
Comment		
(NIOBRARA): TREATMENT PRESSURE WAS AT 6330 PSI AT 25.1 BPM. RAISED RATE TO 28.3 BPM AT 7250 PSI. TREATMENT WENT WELL. AVG VISC 17 CPS AVG TEMP 70.8F AVG PH 10.4. POST JOB 5 MINUTE OF 3366 PSI.		

Other In Hole

Run Date	Des	OD (in)	Top (ftKB)	Btm (ftKB)

Logs

Date	Type	Top, MD (ftKB)	Btm, MD (ftKB)
11/28/1983	INDUCTION	510.0	7,096.0
11/28/1983	NEUTRON DENSITY	2,650.0	7,078.0
1/4/1984	SONIC	6,050.0	7,045.0
7/11/2011	GYRO	12.0	6,960.0