

WPX ENERGY ROCKY MOUNTAIN LLC-EBUS

RWF 34-25

Nabors 577

Post Job Summary

Cement Surface Casing

Date Prepared: 09/14/2014

Job Date: 09/08/2014

Submitted by: Kory Hugentobler- Grand Junction Cement Engineer

The Road to Excellence Starts with Safety

Sold To #: 300721	Ship To #: 3123575	Quote #:	Sales Order #: 0901651013
Customer: WPX ENERGY ROCKY MOUNTAIN LLC-EBUS	Customer Rep: Vearl Tucker		
Well Name: SAVAGE	Well #: RWF 34-25	API/UWI #: 05-045-21995-00	
Field: RULISON	City (SAP): RIFLE	County/Parish: GARFIELD	State: COLORADO
Legal Description: SW SE-25-6S-94W-1124FSL-1391FEL			
Contractor: NABORS DRLG	Rig/Platform Name/Num: NABORS 577		
Job BOM: 7521			
Well Type: DIRECTIONAL GAS			
Sales Person: HALAMERICA\HB50180	Srvc Supervisor: Brandon Reeves		
Job			

Formation Name			
Formation Depth (MD)	Top		Bottom
Form Type			BHST
Job depth MD	1123ft		Job Depth TVD
Water Depth			Wk Ht Above Floor
Perforation Depth (MD)	From		To

Well Data										
Description	New / Used	Size in	ID in	Weight lbm/ft	Thread	Grade	Top MD ft	Bottom MD ft	Top TVD ft	Bottom TVD ft
Casing		9.625	9.001	32.3	8 RD	H-40	0	1123	0	1123
Open Hole Section			13.5				0	1133	0	1133

Tools and Accessories									
Type	Size in	Qty	Make	Depth ft		Type	Size in	Qty	Make
Guide Shoe	9.625			1123		Top Plug	9.625	1	HES
Float Shoe	9.625					Bottom Plug	9.625		HES
Float Collar	9.625					SSR plug set	9.625		HES
Insert Float	9.625					Plug Container	9.625	1	HES
Stage Tool	9.625					Centralizers	9.625		HES

Miscellaneous Materials											
Gelling Agt		Conc		Surfactant		Conc		Acid Type		Qty	Conc
Treatment Fld		Conc		Inhibitor		Conc		Sand Type		Size	Qty

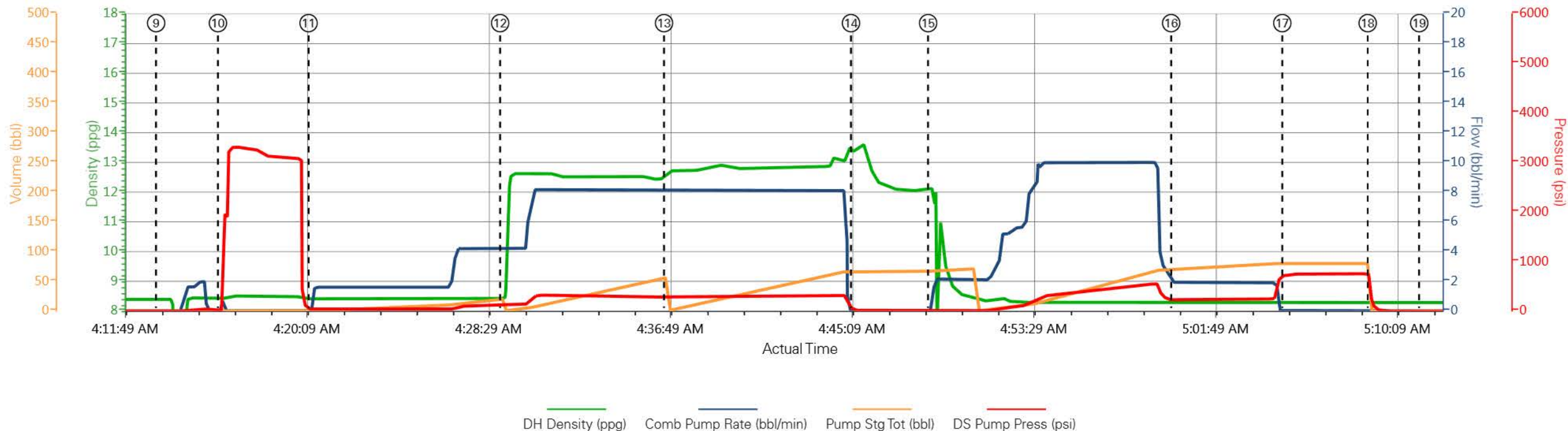
Fluid Data										
Stage/Plug #: 1										
Fluid #	Stage Type	Fluid Name	Qty	Qty UoM	Mixing Density lbm/gal	Yield ft3/sack	Mix Fluid Gal	Rate bbl/min	Total Mix Fluid Gal	
1	Fresh Water	Fresh Water	20	bbl	8.34			4		
Fluid #	Stage Type	Fluid Name	Qty	Qty UoM	Mixing Density lbm/gal	Yield ft3/sack	Mix Fluid Gal	Rate bbl/min	Total Mix Fluid Gal	
2	Lead Cement	VARICEM (TM) CEMENT	135	sack	12.3	2.38		8	13.77	
0.30 %		VERSASET, 55 LB SK (101376573)								

		ECONOLITE (100001580)							
13.72 Gal		FRESH WATER							
		D-AIR 5000, 50 LB SACK (102068797)							
94 lbm		TYPE I / II CEMENT, BULK (101439798)							
		CAL-SEAL 60, BULK (100064022)							
		SALT, BULK (100003695)							
		POLY-E-FLAKE (101216940)							
Fluid #	Stage Type	Fluid Name	Qty	Qty UoM	Mixing Density lbm/gal	Yield ft3/sack	Mix Fluid Gal	Rate bbl/min	Total Mix Fluid Gal
3	Tail Cement	VARICEM (TM) CEMENT	165	sack	12.8	2.11		8	11.75
11.71 Gal		FRESH WATER							
Fluid #	Stage Type	Fluid Name	Qty	Qty UoM	Mixing Density lbm/gal	Yield ft3/sack	Mix Fluid Gal	Rate bbl/min	Total Mix Fluid Gal
4	Displacement	Fresh Water Displacement	84	bbl	8.34			10	
Cement Left In Pipe		Amount	46 ft		Reason		Shoe Joint		
Comment									

1.1 Job Event Log

Type	Seq. No.	Graph Label	Date	Time	Source	DH Density (ppg)	Comb Pump Rate (bbl/min)	Pump Stg Tot (bbl)	DS Pump Press (psi)	Comment
Event	1	Call Out	9/7/2014	22:30:11	USER					
Event	2	Depart from Service Center or Other Site	9/8/2014	00:00:00	USER					
Event	3	Arrive at Location from Service Center	9/8/2014	01:40:25	USER					REQUESTED ON LOCATION TIME WAS 02:30.
Event	4	Assessment Of Location Safety Meeting	9/8/2014	02:10:34	USER					
Event	5	Spot Equipment	9/8/2014	02:39:08	USER					
Event	6	Pre-Rig Up Safety Meeting	9/8/2014	02:39:24	USER					
Event	7	Rig-Up Equipment	9/8/2014	02:39:45	USER					
Event	8	Pre-Job Safety Meeting	9/8/2014	03:50:12	USER					
Event	9	Start Job	9/8/2014	04:13:21	COM5	8.39	0.00	0.0	0.00	TD-1133' TP-1123' SJ-46' MW-9.4 PPG. HOLE-13 1/2" CASING-9 5/8" 32.3 PPF. H-40
Event	10	Test Lines	9/8/2014	04:16:10	COM5	8.43	0.00	1.8	3290.00	TESTED LINES TO 3290 PSI.
Event	11	Pump Water Spacer	9/8/2014	04:20:20	COM5	8.41	4.00	20.0	105.00	FRESH WATER SPACER.
Event	12	Pump Lead Cement	9/8/2014	04:29:07	COM5	12.33	8.00	57.2	320.00	135 SKS.@ 12.3 PPG. 2.38 YIELD 13.77 GAL/SK.
Event	13	Pump Tail Cement	9/8/2014	04:36:38	COM5	12.80	8.00	62.0	310.00	165 SKS.@ 12.8 PPG. 2.11 YIELD 11.75GAL/SK.
Event	14	Drop Top Plug	9/8/2014	04:45:12	COM5	12.78	0.00	0.0	0.00	
Event	15	Pump Displacement	9/8/2014	04:48:44	COM5	8.31	10.00	0.0	565.00	FRESH WATER DISPLACEMENT.
Event	16	Slow Rate	9/8/2014	04:59:53	COM5	8.29	2.00	70.0	218.00	SLOW RATE TO LAND THE PLUG.
Event	17	Bump Plug	9/8/2014	05:04:59	COM5	8.31	2.00	84.0	245.00	PLUG LANDED AT 245 PSI. PRESSURED UP TO 730 PSI.
Event	18	Check Floats	9/8/2014	05:08:54	COM5	8.30	0.00	0.0	0.00	FLOATS HELD. .5 BBL. OF FLOW BACK.
Event	19	End Job	9/8/2014	05:11:16	COM5	8.29	0.00	0.0	0.00	THE WELL WAS CIRCULATED BEFORE STARTING THE JOB. GOOD CIRCULATION THROUGHOUT THE JOB. THE PIPE WAS NOT RECIPROCATED. CIRCULATED 15 BBLs.OF CEMENT TO SURFACE.

WPX ENERGY - SAVAGE RWF 34-25 - 9 5/8" SURFACE



▼ **HALLIBURTON** | iCem® Service

Created: 2014-09-08 02:35:14, Version: 3.0.121

Edit

Customer: WPX ENERGY ROCKY MOUNTAIN LLC-
EBUS

Job Date: 9/8/2014

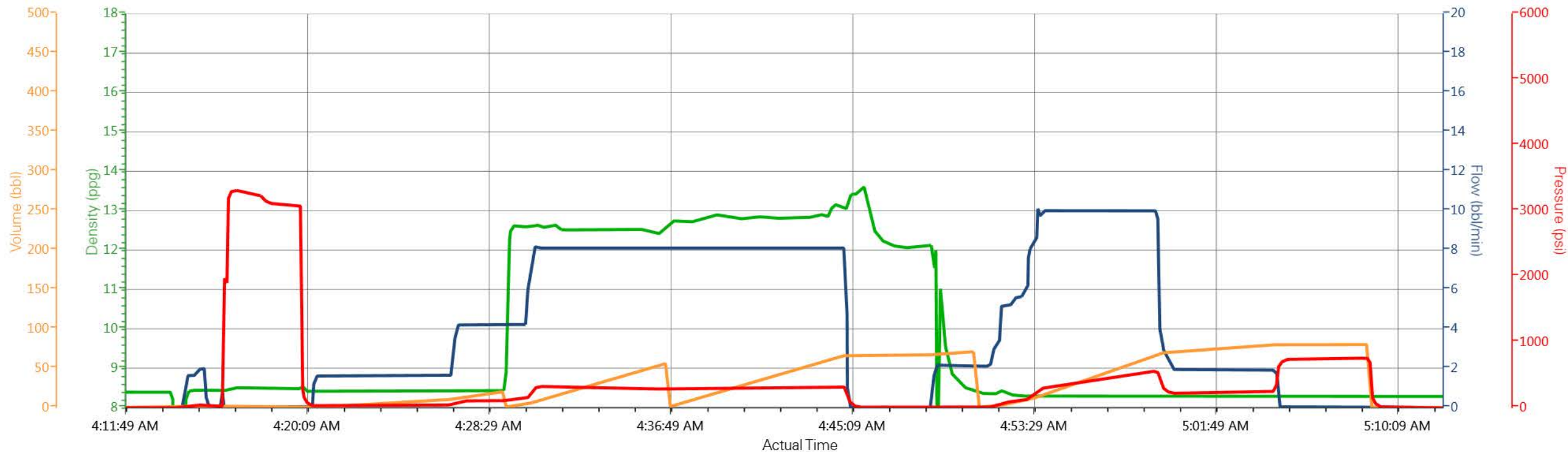
Well: SAVAGE RWF 34-25

Representative: BRANDON REEVES

Sales Order #: 901651013

Elite / Operator: ELITE 7 / KEVIN BENNETT

WPX ENERGY - SAVAGE RWF 34-25 - 9 5/8" SURFACE



DH Density (ppg) Comb Pump Rate (bbl/min) Pump Stg Tot (bbl) DS Pump Press (psi)

HALLIBURTON

Water Analysis Report

Company: WPX ENERGY

Submitted by: BRANDON REEVES

Attention: J. TROUT

Lease SAVAGE

Well # RWF 34-25

Date: 9/8/2014

Date Rec.: 9/8/2014

S.O.# 901651013

Job Type: SURFACE

Specific Gravity	<i>MAX</i>	1
pH	<i>8</i>	7.1
Potassium (K)	<i>5000</i>	0 Mg / L
Calcium (Ca)	<i>500</i>	100 Mg / L
Iron (FE2)	<i>300</i>	0 Mg / L
Chlorides (Cl)	<i>3000</i>	0 Mg / L
Sulfates (SO ₄)	<i>1500</i>	UNDER 200 Mg / L
Chlorine (Cl ₂)		0 Mg / L
Temp	<i>40-80</i>	66 Deg
Total Dissolved Solids		400 Mg / L

Respectfully: BRANDON REEVES

Title: CEMENTING SUPERVISOR

Location: Grand Junction, CO

NOTICE:

This report is limited to the described sample tested. Any person using or relying on this report agrees that Halliburton shall not be liable for any loss or damage whether due to act or omission resulting from such report or its