



October 15, 2014

Director Lepore  
Colorado Oil and Gas Conservation Commission  
1120 Lincoln Street, Suite 801  
Denver, CO 80203

Re: Rule 318 A.(e)  
Vista 21-2CHZ  
NWSW of Section 2, 4N, 68W  
Weld County, Colorado

Dear Director Lepore,

Synergy Resources Corporation (SRC) is planning to drill the captioned horizontal well in accordance with the provisions of COGCC Rule 318A.(e).

SRC's proposed wellbore spacing unit consists of the W/2 of Section 2 Township 4N Range 68W, creating a 320-acre wellbore spacing unit for the Codell formation.

Synergy Resources Corporation hereby certifies to the Director that SRC owns 100% interest in the proposed well bore spacing unit for the above said well, and requests the Director to approve the Horizontal well.

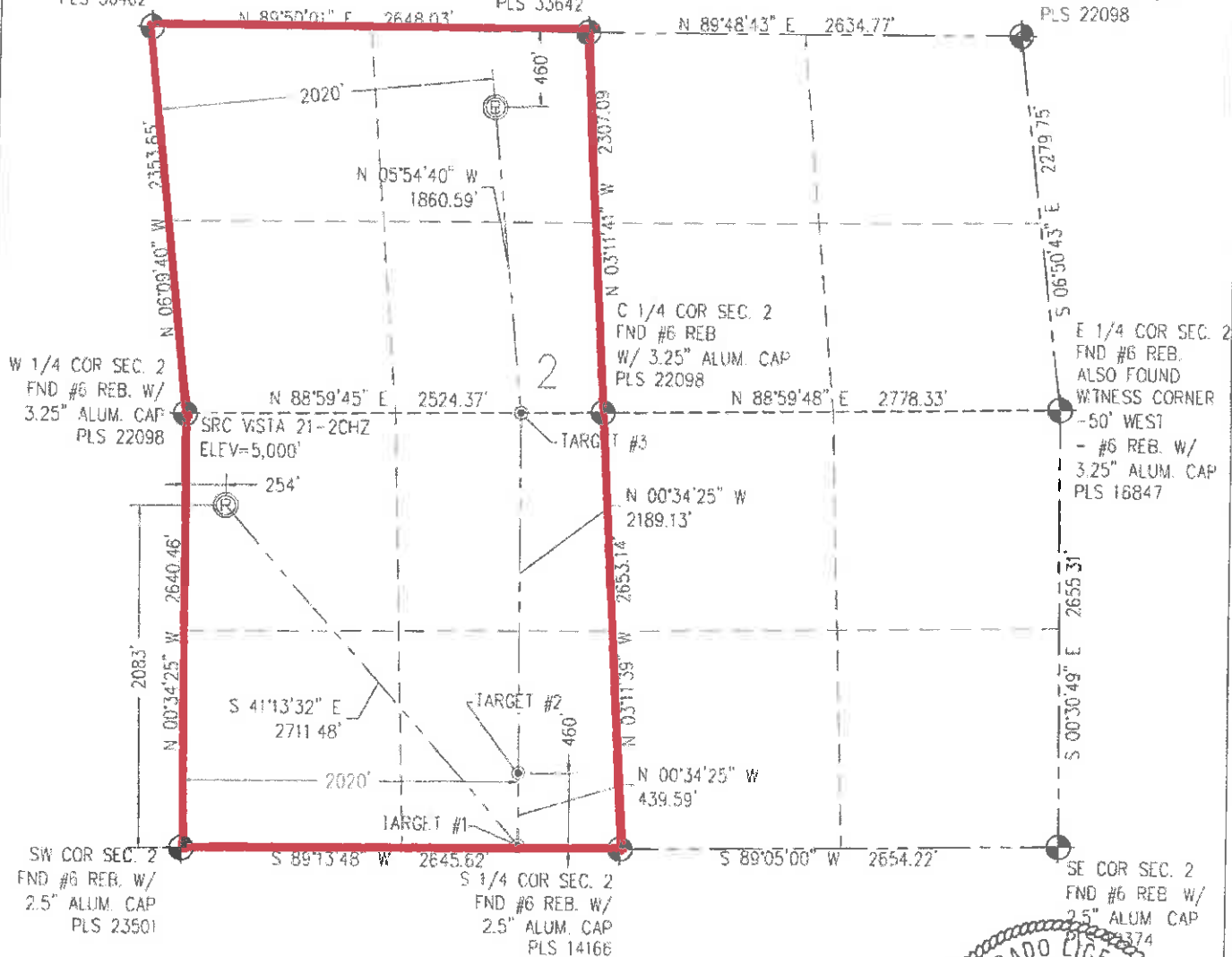
If you have any questions or issues regarding this permit, please contact Craig Rasmuson at (970) 737-1073.

Sincerely,

Craig Rasmuson  
Synergy Resources Corporation

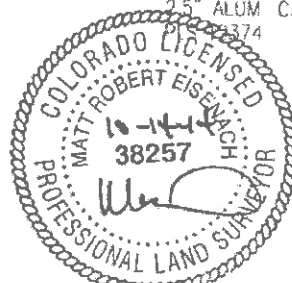
**WELL LOCATION CERTIFICATE**

THIS MAP DOES NOT REPRESENT A BOUNDARY SURVEY

SECTION 2  
TOWNSHIP 4 NORTH  
RANGE 68 WESTNW COR SEC. 2  
FND #6 REB. W/  
2.5" ALUM. CAP  
PLS 30462N 1/4 COR SEC. 2  
FND #6 REB. W/  
3.25" ALUM. CAP  
PLS 33642NE COR SEC. 2  
FND #6 REB. W/  
3.25" ALUM. CAP  
PLS 22098

N  
IN ACCORDANCE WITH A REQUEST FROM CRAIG RASMUSON - SYNERGY RESOURCES, BASELINE ENGINEERING CORP. HAS DETERMINED THE LOCATION OF THE SRC VSTA 21-2CHZ TO BE 2083' FSL AND 254' FWL, AS MEASURED AT NINETY (90) DEGREES FROM THE SECTION LINE OF SECTION 2, TOWNSHIP 4 NORTH, RANGE 68 WEST AND THE BOTTOM HOLE LOCATION TO BE 460' FNL AND 2020' FWL OF SECTION 2, TOWNSHIP 4 NORTH, RANGE 68 WEST, 6TH PRINCIPAL MERIDIAN, WELD COUNTY, COLORADO

I HEREBY CERTIFY THAT THIS WELL LOCATION CERTIFICATE WAS PREPARED BY ME, OR UNDER MY DIRECT SUPERVISION, THAT THE FIELD WORK WAS COMPLETED ON 07/28/2014, THAT IT IS NOT A LAND SURVEY PLAT OR AN IMPROVEMENT SURVEY PLAT, AND THAT IT IS NOT TO BE RELIED UPON FOR ESTABLISHMENT OF FENCE, BUILDING, OR OTHER FUTURE IMPROVEMENT LINES

**NOTES:**

- 1) LAT/LONG SHOWN ARE BASED ON A GPS OBSERVATION (NAD83)
- 2) BEARINGS SHOWN ARE GRID BEARINGS OF THE COLORADO STATE PLANE COORDINATE SYSTEM, NORTH ZONE, NORTH AMERICAN DATUM 1983/2007
- 3) GROUND ELEVATIONS ARE BASED ON A GPS OBSERVATION (NAVD 85 DATUM)
- 4) ALL DISTANCES SHOWN ARE FIELD MEASURED UNLESS OTHERWISE NOTED
- 5) THE NEAREST EXISTING WELL IS: FRATT 14-20 1104' SE
- 6) IMPROVEMENTS: SEE LOCATION DRAWING EXHIBIT FOR ALL VISIBLE IMPROVEMENTS WITHIN 600' OF WELL HEAD
- 7) SURFACE USE: REMEDIATED GROUND
- 8) OPERATOR NAME: BRETT BIRCH

**SURFACE HOLE:**  
LATITUDE: 40.341228° N  
LONGITUDE: 104.978904° W  
POOP: 0.6  
1/4, 1/4, NW/4SW/4  
NEAREST PROPERTY LINE: 264' W

**BOTTOM HOLE**  
LATITUDE: 40.347898° N  
LONGITUDE: 104.973225° W

**TARGET #1**  
LATITUDE: 40.335603° N  
LONGITUDE: 104.972539° W

**TARGET #2**  
LATITUDE: 40.338809° N  
LONGITUDE: 104.972546° W

**TARGET #3**  
LATITUDE: 40.342816° N  
LONGITUDE: 104.972578° W

**LEGEND**

- FOUND/SET SURVEY MONUMENT PER MONUMENT RECORD EXCEPTIONS NOTED
- CALCULATED SURVEY MONUMENT POSITION
- (C) CALCULATED DIMENSION

MATT ROBERT EISENACH  
Professional Land Surveyor Registration No. 38257  
State of Colorado  
FOR AND ON BEHALF OF BASELINE ENGINEERING CORP.

Completed  
10/14/2014

PROJECT # SYNDAN68WC2-01

NOTICE: According to Colorado law, you MUST commence any legal action based upon any defect in this W.L.C. within three years after you first discover such defect. In no event may any action based upon any defect in this W.L.C. be commenced more than ten years from the said date of the certification shown herein.