



Scale 1:240 (5"=100') Imperial
Measured Depth Log

Well Name: Grenemyer 14C-3HZ
 Location: Weld County, CO.
 License Number: 05123384160000
 Spud Date: 12/21/13
 Surface Coordinates: 636'FNL, 2605'FEL, Sec 27, T1N-R67W
 Region: DJ Basin
 Drilling Completed: 01/12/14
 Bottom Hole Coordinates: 460'FSL, 2104'FWL, Sec 3, T1S-R67W
 Ground Elevation (ft): 5049' K.B. Elevation (ft): 5069'
 Logged Interval (ft): 6650' To: 8185' Total Depth (ft): 16697'
 Formation: Codell / Ft Hays
 Type of Drilling Fluid: Water Based Mud Vertical / Oil Based Mud Lateral

Printed by MUD.LOG from WellSight Systems 1-800-447-1534 www.WellSight.com

OPERATOR

Company: Anadarko Petroleum Corporation
 Address: Granite Tower
 1099 18th Street, #1800
 Denver, CO 80202

GEOLOGIST

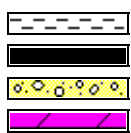
Name: Scott Crozier / Ben Thompson
 Company: Great Divide Consulting, Inc
 Address: P.O. Box 630263
 Highlands Ranch, CO 80163

Comments

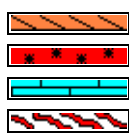
ROCK TYPES



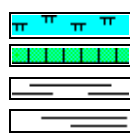
Anhy
Bent
Brec
Cht



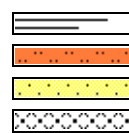
Clyst
Coal
Congl
Dol



Gyp
Igne
Lmst
Meta



Mrlst
Salt
Shale
Shcol



Shgy
Sltst
Ss
Till

ACCESSORIES

MINERAL

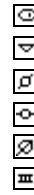
Anhy
Arggrn
Arg
Bent
Bit
Brecfrag
Calc
Carb
Chtdk
Chltt
Dol
Feldspar
Ferrpel
Ferr
Glau



Gyp
Hvymin
Kaol
Marl
Minxl
Nodule
Phos
Pyr
Salt
Sandy
Silt
Sil
Sulphur
Tuff

FOSSIL

Algae
Amph
Belm
Bioclst
Brach
Bryozoa
Cephal
Coral
Crin
Echin
Fish
Foram
Fossil
Gastro
Oolite



Ostra
Pelec
Pellet
Pisolite
Plant
Strom

STRINGER

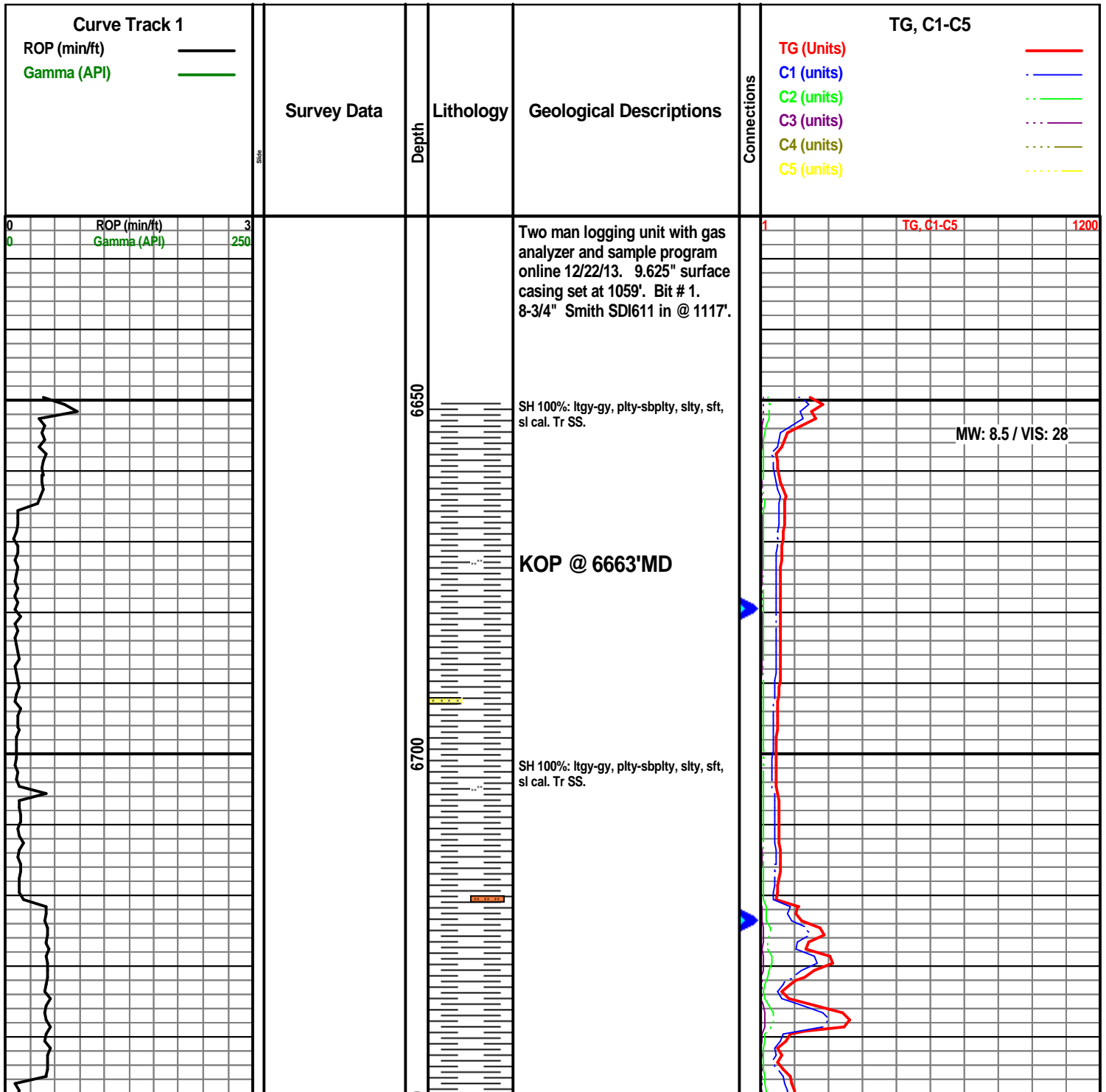
Anhy
Arg
Bent
Coal
Dol
Gyp
Ls
Mrst

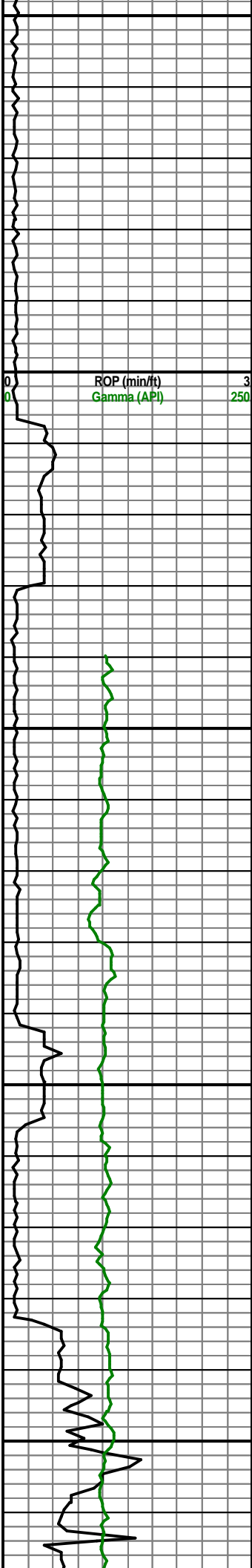


Sltstrg
Ssstrg

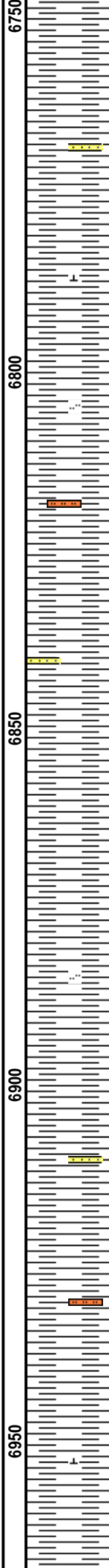
TEXTURE

Boundst
Chalky
Cryxln
Earthy
Finexln
Grainst
Lithogr
Microxln
Mudst
Packst
Wackest





MD 6750 TVD 6730.84
Az 36.5° Inc 0.7°



SH 100%: ltgy-gy, plty-sbplty, slty, sft,
sl cal. Tr SS.

SH 100%: ltgy-gy, plty-sbplty, slty, sft,
sl cal. Tr SS.

SH 100%: ltgy-gy, plty-sbplty, slty, sft,
sl cal. Tr SS.

SH 100%: ltgy-gy, plty-sbplty, slty, sft,
sl cal. Tr SS.

SH 100%: ltgy-gy, plty-sbplty, slty, sft,
sl cal. Tr SS.

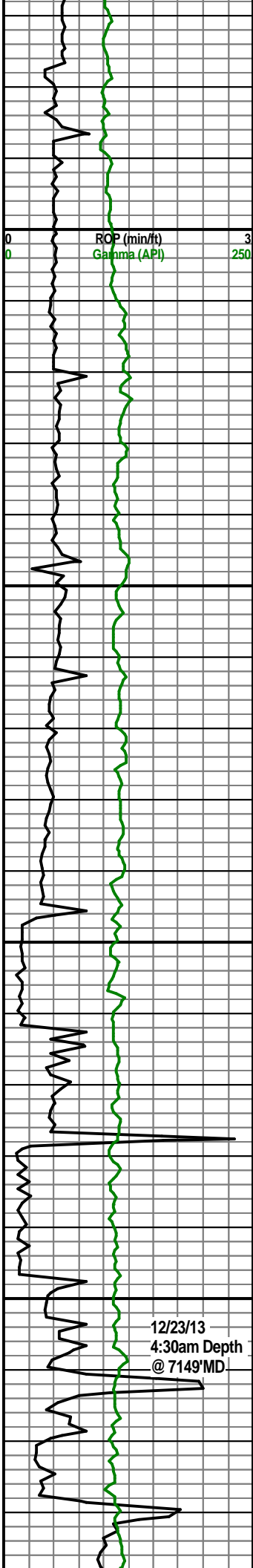
MW: 8.5 / VIS: 28

TG, C1-C5

1200

MW: 8.5 / VIS: 28

MW: 8.5 / VIS: 28

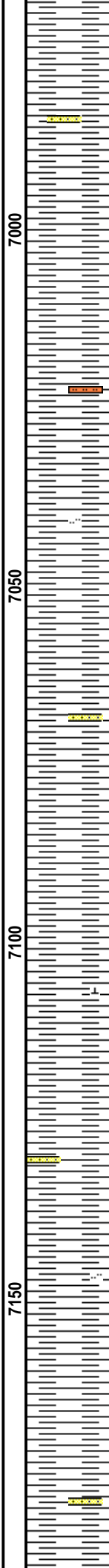


ROP (min/ft) 3
Gamma (API) 250

MD 7091 TVD 7071.82
Az 341.83° Inc 0.42°

12/23/13
4:30am Depth
@ 7149' MD

MD 7177 TVD 7157.82
Az 156.54° Inc 0.76°



7000

7050

7100

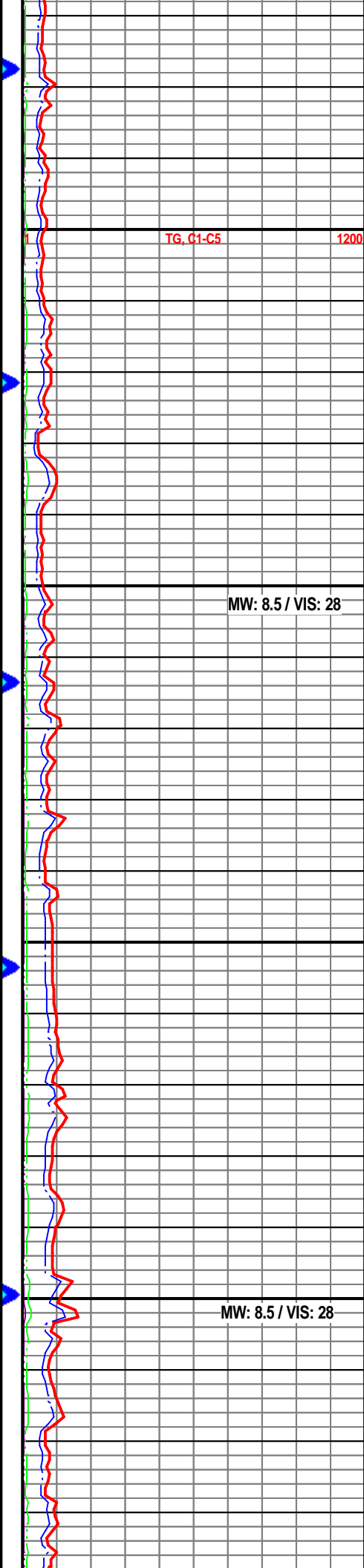
7150

SH 100%: ltgy-gy, plty-sbplty, slty, sft,
sl cal. Tr SS.

SH 100%: ltgy-gy, plty-sbplty, slty, sft,
sl cal. Tr SS.

SH 100%: ltgy-gy, plty-sbplty, slty, sft,
sl cal. Tr SS.

SH 100%: ltgy-gy, plty-sbplty, slty, sft,
sl cal. Tr SS.

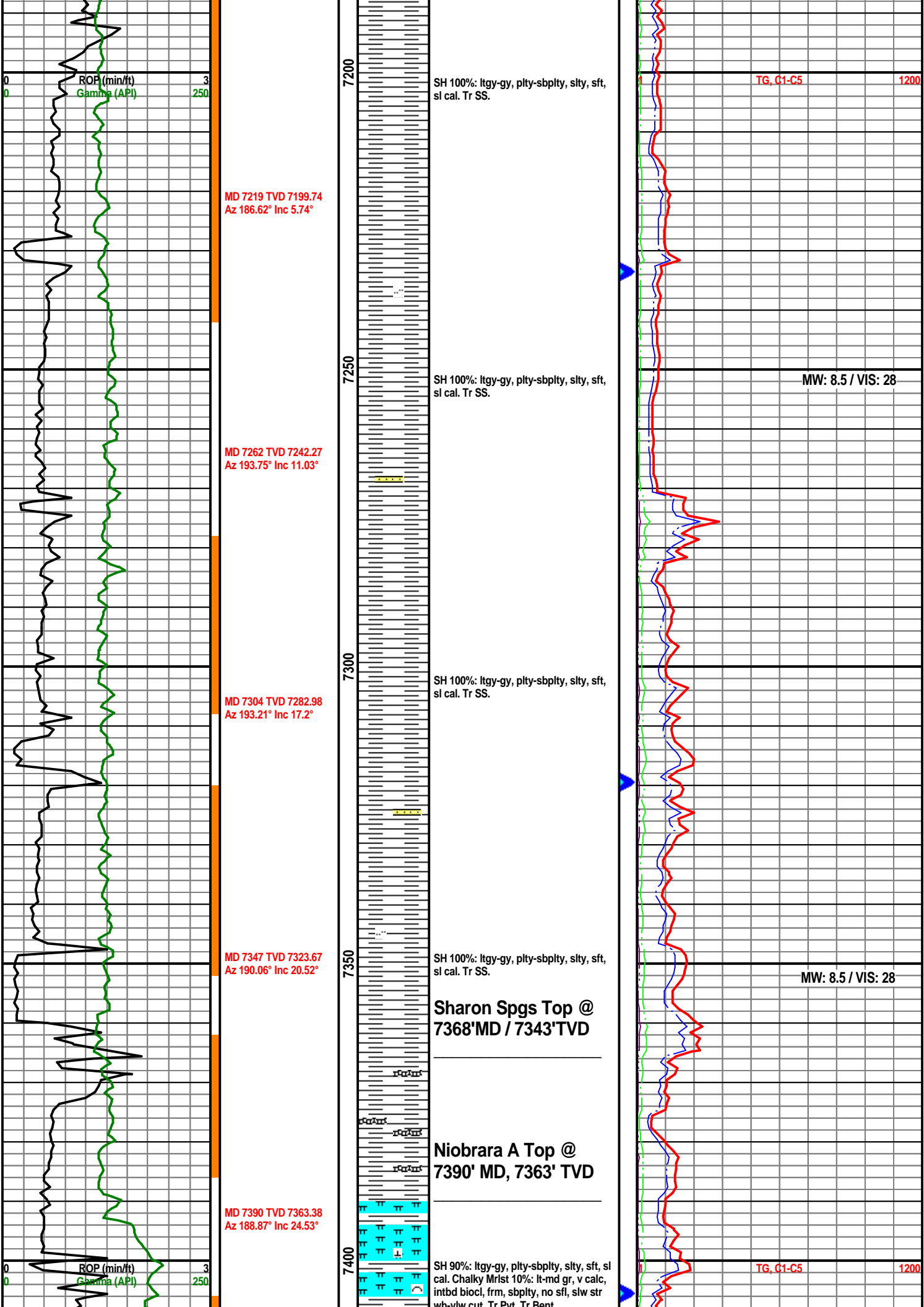


TG, C1-C5

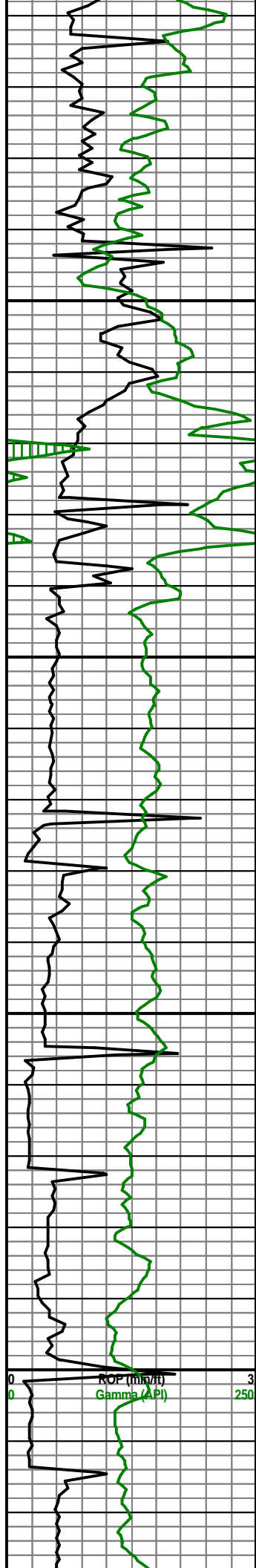
1200

MW: 8.5 / VIS: 28

MW: 8.5 / VIS: 28



wh-yw cut. Tr Pyt, Tr Bent.



MD 7432 TVD 7401.15
Az 186.42° Inc 27.31°

MD 7475 TVD 7438.58
Az 183.78° Inc 31.64°

MD 7518 TVD 7474.49
Az 183.08° Inc 35.05°

MD 7560 TVD 7508.03
Az 181.4° Inc 38.94°

MD 7603 TVD 7541.24
Az 183.97° Inc 39.97°

7450

7500

7550

7600

Chalky Mrlst 80%: lt-md gr, v calc, intbd biocl, frm, sbpity, no sfl, slw str wh-ylw cut. SH 20%: gy-dkgy, sft, sbpity-sbbiky, slty, grty, vs cal. Tr Pyt, Tr Bent.

Chalky Mrlst 80%: lt-md gr, v calc, intbd biocl, frm, sbpity, no sfl, slw str wh-ylw cut. SH 20%: gy-dkgy, sft, sbpity-sbbiky, slty, grty, vs cal. Tr Pyt, Tr Bent.

Chalky Mrlst 80%: lt-md gr, v calc, intbd biocl, frm, sbpity, no sfl, slw str wh-ylw cut. SH 20%: gy-dkgy, sft, sbpity-sbbiky, slty, grty, vs cal. Tr Pyt, Tr Bent.

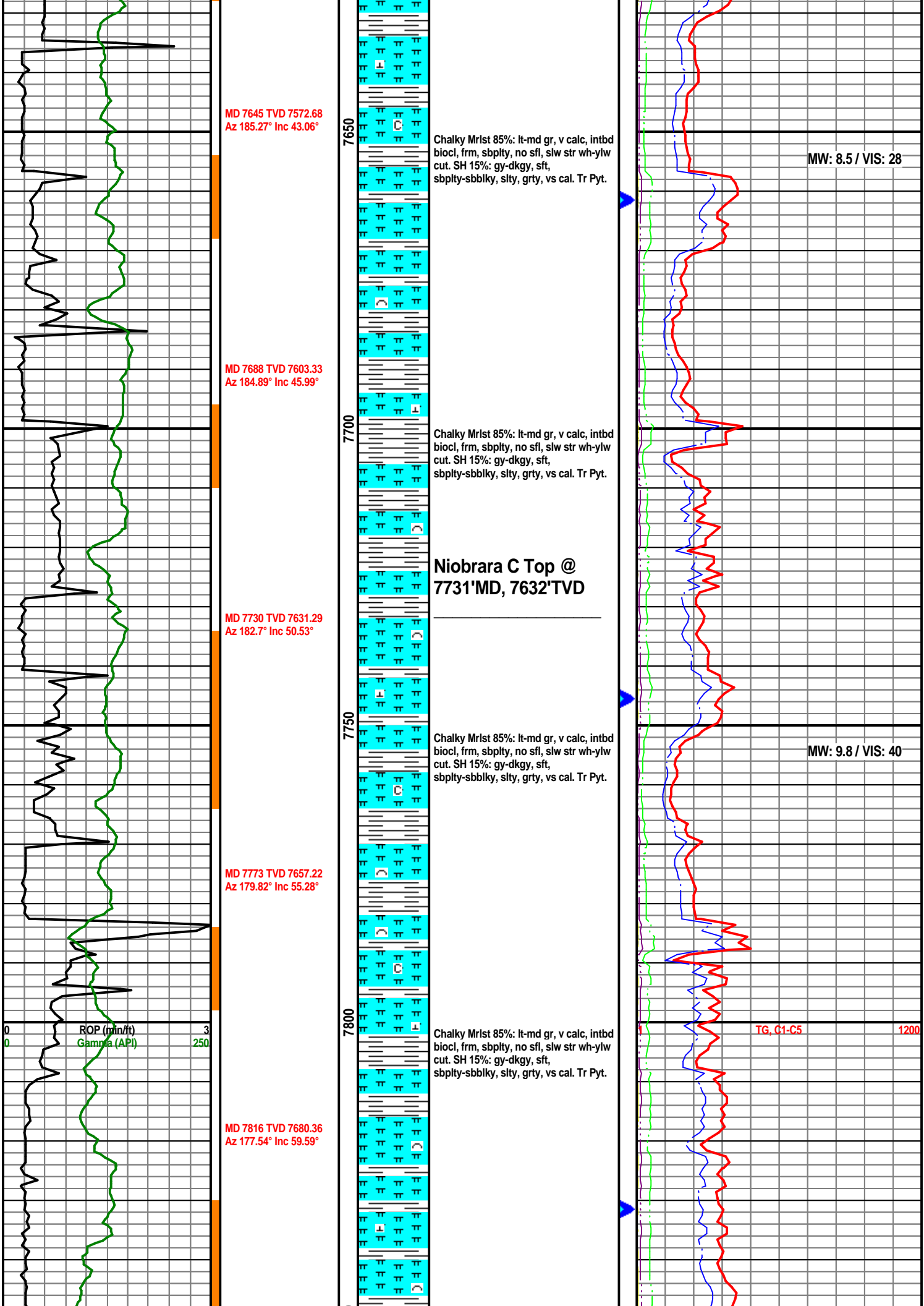
Niobrara B Top @
7611'MD. 7547'TVD

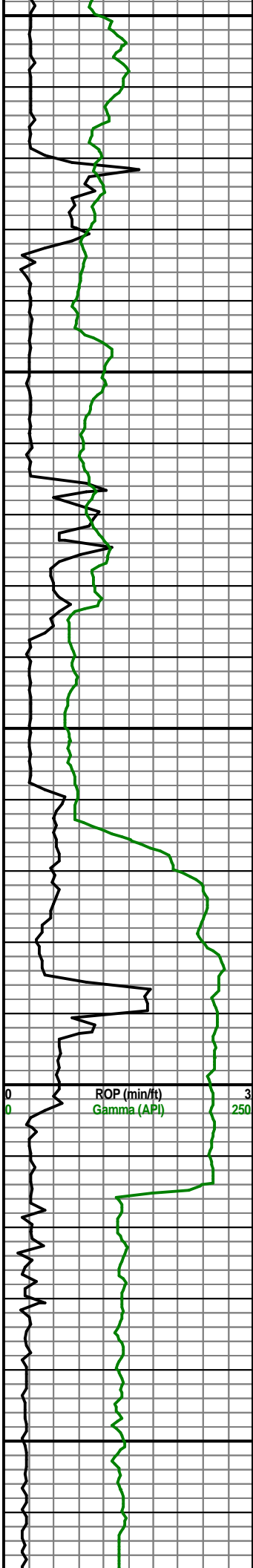
MW: 8.5 / VIS: 28

MW: 8.5 / VIS: 28

TG, C1-C5

1200





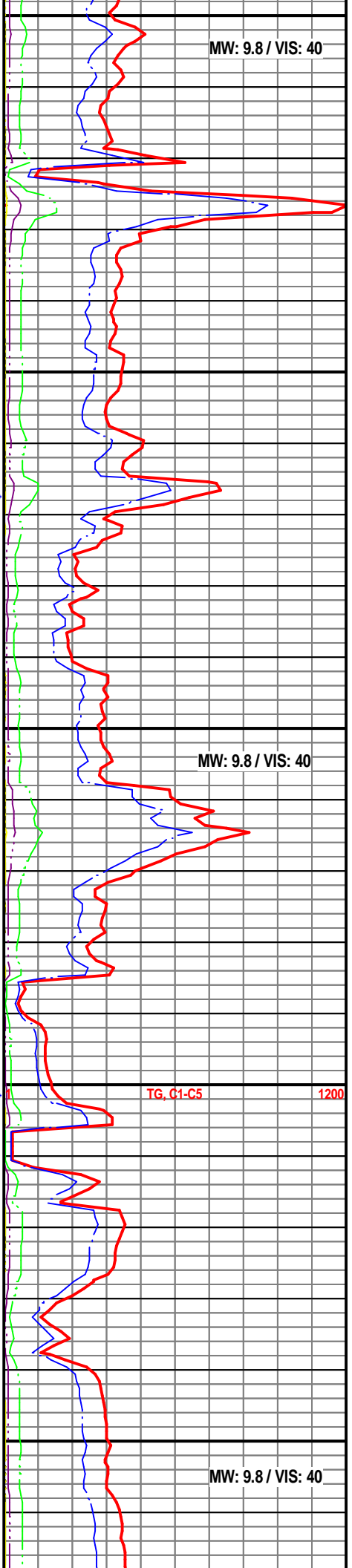
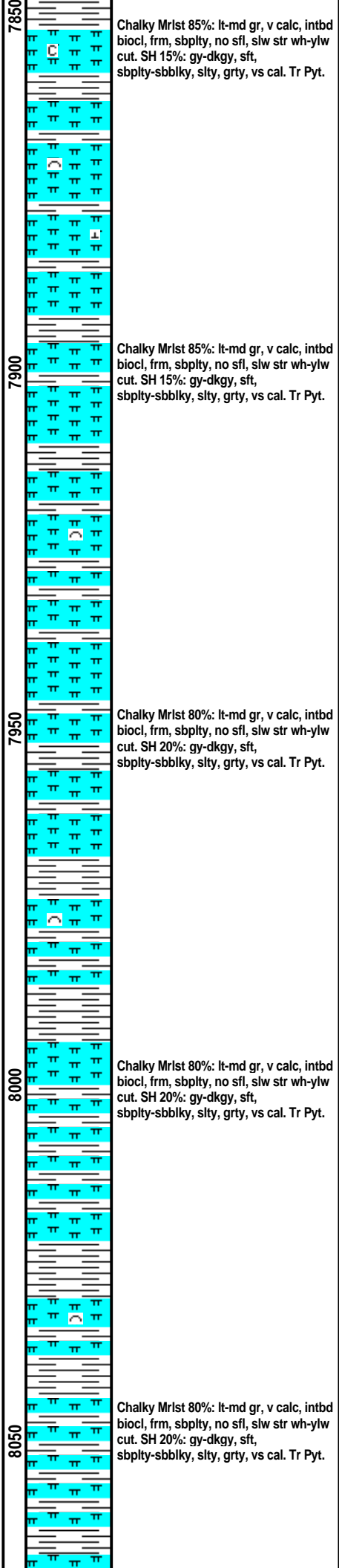
MD 7858 TVD 7700.59
Az 175.82° Inc 62.83°

MD 7901 TVD 7719.1
Az 176.5° Inc 66.18°

MD 7944 TVD 7735.05
Az 177.26° Inc 70.25°

MD 7986 TVD 7747.72
Az 176.83° Inc 74.62°

MD 8029 TVD 7757.92
Az 177.76° Inc 77.95°



MW: 9.8 / VIS: 40

MW: 9.8 / VIS: 40

TG, C1-C5

1200

MW: 9.8 / VIS: 40

