



October 15, 2014

Director Lepore
Colorado Oil and Gas Conservation Commission
1120 Lincoln Street, Suite 801
Denver, CO 80203

Re: Rule 318 A.(e)
Vista M-2NHZ
NWSW of Section 2, 4N, 68W
Weld County, Colorado

Dear Director Lepore,

Synergy Resources Corporation (SRC) is planning to drill the captioned horizontal well in accordance with the provisions of COGCC Rule 318A.(e).

SRC's proposed wellbore spacing unit consists of the E/2 of the W/2 and the W/2 of the E/2 of Section 2 Township 4N Range 68W, creating a 320-acre wellbore spacing unit for the Niobrara formation.

Synergy Resources Corporation hereby certifies to the Director that SRC owns 100% interest in the proposed well bore spacing unit for the above said well, and requests the Director to approve the Horizontal well.

If you have any questions or issues regarding this permit, please contact Craig Rasmuson at (970) 737-1073.

Sincerely,

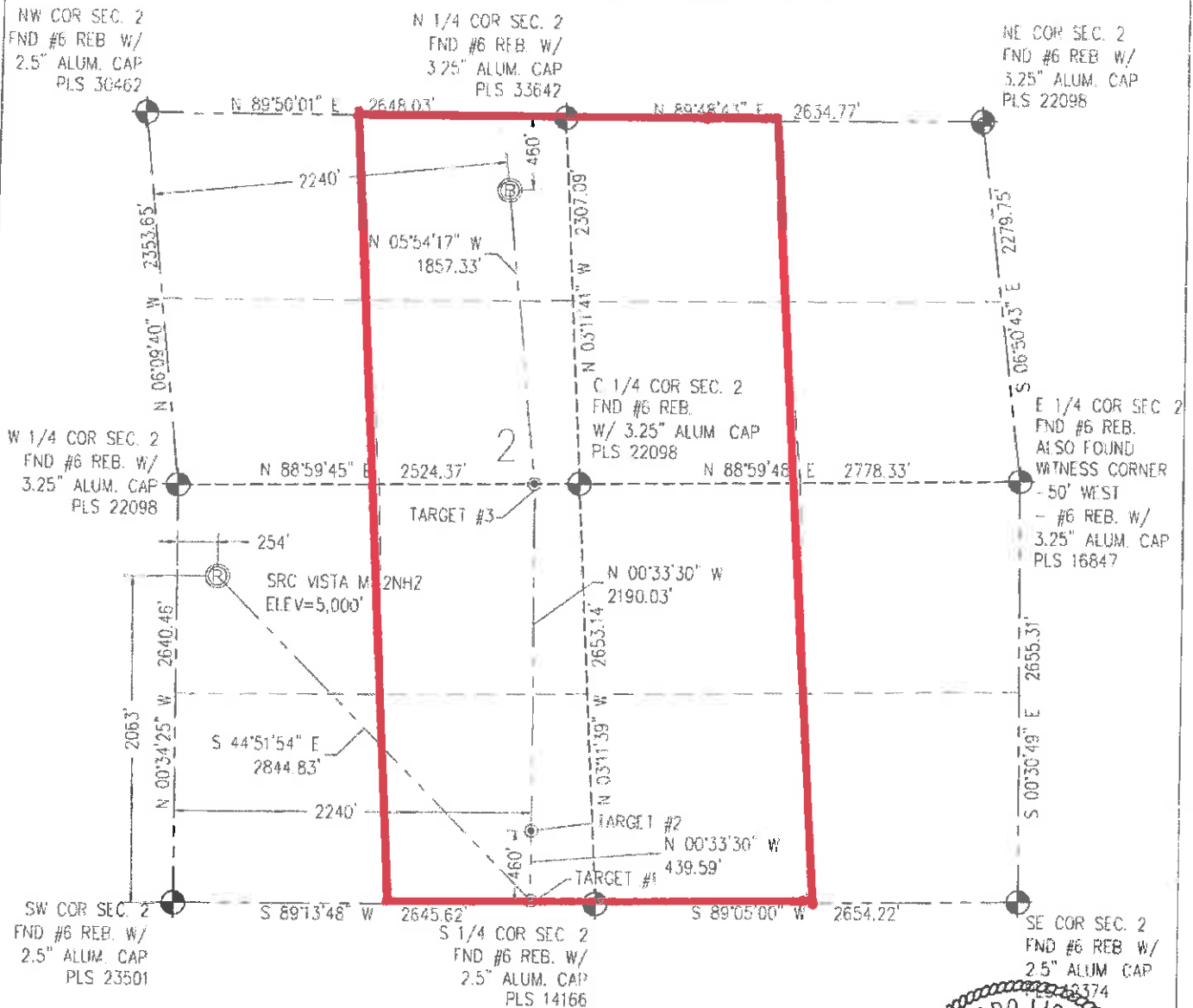
Craig Rasmuson
Synergy Resources Corporation

Baseline Engineering Corp. 710 11th Avenue Suite 105 Greeley, Colorado 80631

WELL LOCATION CERTIFICATE

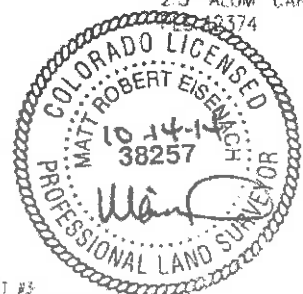
THIS MAP DOES NOT REPRESENT A BOUNDARY SURVEY

SECTION 2
TOWNSHIP 4 NORTH
RANGE 68 WEST



IN ACCORDANCE WITH A REQUEST FROM CRAIG RASMUSON - SYNERGY RESOURCES, BASELINE ENGINEERING CORP. HAS DETERMINED THE LOCATION OF THE SRC VISTA M-2NHZ TO BE 2063' FSL AND 254' FWL, AS MEASURED AT NINETY (90) DEGREES FROM THE SECTION LINE OF SECTION 2, TOWNSHIP 4 NORTH, RANGE 68 WEST AND THE BOTTOM HOLE LOCATION TO BE 460' FNL AND 2240' FNL OF SECTION 2, TOWNSHIP 4 NORTH, RANGE 68 WEST, 6TH PRINCIPAL MERIDIAN, WELD COUNTY, COLORADO

I HEREBY CERTIFY THAT THIS WELL LOCATION CERTIFICATE WAS PREPARED BY ME, OR UNDER MY DIRECT SUPERVISION, THAT THE FIELD WORK WAS COMPLETED ON 07/28/2014, THAT IT IS NOT A LAND SURVEY PLAT OR AN IMPROVEMENT SURVEY PLAT, AND THAT IT IS NOT TO BE RELIED UPON FOR ESTABLISHMENT OF FENCE, BUILDING, OR OTHER FUTURE IMPROVEMENT LINES



NOTES:

- 1) LAT/LONG SHOWN ARE BASED ON A GPS OBSERVATION (NAD83)
- 2) BEARINGS SHOWN ARE GRID BEARINGS OF THE COLORADO STATE PLANE COORDINATE SYSTEM, NORTH ZONE, NORTH AMERICAN DATUM 1983/2007
- 3) GROUND ELEVATIONS ARE BASED ON A GPS OBSERVATION (NAVD 86 DATUM)
- 4) ALL DISTANCES SHOWN ARE FIELD MEASURED UNLESS OTHERWISE NOTED
- 5) THE NEAREST EXISTING WELL IS, PRATT 14-2D 1095' SE
- 6) IMPROVEMENTS SEE LOCATION DRAWING EXHIBIT FOR ALL VISIBLE IMPROVEMENTS WITHIN 600' OF WELL HEAD
- 7) SURFACE USE: REMEDIATED GROUND
- 8) OPERATOR NAME: BRETT BIRCH

NOTICE: According to Colorado law you MUST commence any legal action based upon any defect in this WLC within three years after you first discover such defect. In no event may any action based upon any defect in this WLC be commenced more than ten years from this said date of the certification shown hereon.

SURFACE HOLE:
LATITUDE: 40.341173° N
LONGITUDE: 104.978905° W
POOP: 0.6
1/4, 1/4, NW1/4SW1/4
NEAREST PROPERTY LINE: 204' W

BOTTOM HOLE:
LATITUDE: 40.347896° N
LONGITUDE: 104.972432° W

TARGET #1
LATITUDE: 40.335607° N
LONGITUDE: 104.971750° W

TARGET #2
LATITUDE: 40.336813° N
LONGITUDE: 104.971756° W

TARGET #3
LATITUDE: 40.342823° N
LONGITUDE: 104.971785° W

LEGEND



FOUND/SET SURVEY MONUMENT PER
MONUMENT RECORD EXCEPTIONS NOTED



CALCULATED SURVEY MONUMENT
POSITION

MATT ROBERT EISERACH

Professional Land Surveyor Registration No. 38257
State of Colorado
FOR AND ON BEHALF OF BASELINE ENGINEERING CORP.

Completed

10/14/2014

PROJECT # SYN04668002-01