

WESCO OPERATING, INC.

OIL & GAS OPERATIONS

RECEIVED
AUG 20 2013
COGCC

Thursday, August 15, 2013

REM 7611

Document 2313431

John Axelson
Environmental Protection Specialist, Northeast Region
Colorado Oil & Gas Conservation Commission
1120 Lincoln Street
Suite 801
Denver, Colorado 80203

Sent via standard mail (1 copy) with CD attached with scanned complete document as pdf.

RE; COGCC Remediation Project #7611
Rudnik 33-27
API # 05-121-08687
Request to close excavation

Active pit 117702 ← Prod Water
39.762 434
- 103.067499
Skim = #434226

Mr. Axelson;

Introduction

Wesco Operating, Inc. (Wesco) is requesting permission to close the former skim pit excavation at the Rudnik Combined Battery with no further excavation or testing. The excavation was completed as part of COGCC Remediation Project #7611.

Background

The Rudnik Combined Battery is located in Washington County, Colorado in the Justice Oilfield. The battery is located in the NE ¼ of the SE ¼, Section 27, Township 3 South, Range 51 West. An unlined, netted skim pit was formerly present on the south side of the battery (see attached map).

Timeline

A timeline of project events is provided below;

- Subsequent to an inspection on November 13, 2012, COGCC requested Wesco close the skim pit because it was not lined.
- Wesco submitted a Form 27 describing the planned remediation on February 15, 2013.
- The Form 27 was approved by COGCC on March 16, 2013.
- Excavation work was started on March 20th, 2013. Complete removal of the soils with hydrocarbons above COGCC standards required two rounds of excavation with a round of soil sampling between. Excavation photos are attached.
- Excavation was completed on April 19th, 2013. A drawing providing the final dimensions of the excavated pit with the sample locations is attached.

Soil was
comingled

Soil Analysis Results

Two rounds of soil samples were collected. The first round was collected at the sample numbers 1-5 as shown on the attached excavation map. These samples were analyzed for a wide range of analytes in accordance with COGCC requirements. After additional excavation, three additional samples (numbers 6-8 on the attached excavation drawing) were analyzed for Diesel Range Organics (DRO) and Gasoline Range Organics (GRO) only, in accordance with COGCC's approval of Wesco's request for a reduced analyte list. All of the results are summarized in the table below.

Soil Analysis Summary Table

Sample Collection Date	Sample #	Sample Location	Analyte Tested	*Test Results	COGCC Table 910-1 Standard
3-22-13	1	north wall of excavation, 3.5' bgs	Benzene	ND	0.17 ppm
			Toulene	ND	85 ppm
			Ethylbenzene	ND	100 ppm
			Xylene	ND	175 ppm
			TPH	73.2	500 ppm
			pH	8.97	6-9
			Temperature	20.7	N/A
			Conductance	0.032	<4 mmhos/cm
			SAR	7.7	<12
			Sodium	150000	NS
			Calcium	24000	NS
			Magnesium	3700	NS
			ESP	9.2	NS
3-22-13	2	east wall of excavation, 3' bgs	Benzene	ND	0.17 ppm
			Toulene	ND	85 ppm
			Ethylbenzene	ND	100 ppm
			Xylene	ND	175 ppm
			TPH	1102.4	500 ppm
			pH	8.58	6-9
			Temperature	20.3	N/A
			Conductance	0.066	<4 mmhos/cm
			SAR	3.8	<12
			Sodium	320000	NS
			Calcium	410000	NS
			Magnesium	83000	NS
			ESP	4.1	NS
3-22-13	3	south wall of excavation,	Benzene	0.00056	0.17 ppm
			Toulene	ND	85 ppm
			Ethylbenzene	ND	100 ppm

		3.5' bgs	Xylene	ND	175 ppm
			TPH	1800	500 ppm
			pH	8.74	6-9
			Temperature	20.0	N/A
			Conductance	0.094	<4 mmhos/cm
			SAR	13	<12
			Sodium	230000	NS
			Calcium	17000	NS
			Magnesium	3600	NS
			ESP	15	NS
3-22-13	4	west wall of excavation, 4' bgs	Benzene	0.0013	0.17 ppm
			Toulene	0.0018	85 ppm
			Ethylbenzene	0.005	100 ppm
			Xylene	0.0072	175 ppm
			TPH	4247	500 ppm
			pH	8.43	6-9
			Temperature	20.3	N/A
			Conductance	0.076	<4 mmhos/cm
			SAR	4.2	<12
			Sodium	310000	NS
			Calcium	350000	NS
			Magnesium	52000	NS
			ESP	4.6	NS
3-22-13	5	bottom of excavation, 7' bgs	Benzene	ND	0.17 ppm
			Toulene	ND	85 ppm
			Ethylbenzene	ND	100 ppm
			Xylene	ND	175 ppm
			TPH	55	500 ppm
			pH	9.26	6-9
			Temperature	20.6	N/A
			Conductance	0.052	<4 mmhos/cm
			SAR	7.3	<12
			Sodium	130000	NS
			Calcium	19000	NS
			Magnesium	3200	NS
			ESP	8.7	NS

	6	On west wall of excavation after additional soil was removed, 4' bgs	TPH	3.0	500 ppm
	7	On south wall of excavation after additional soil was removed, 3.5' bgs	TPH	5.1	500 ppm
	8	On east wall of excavation after additional soil was removed, 3' bgs	TPH	5.0	500 ppm

***Test Results --**

For some analytes, the lab reported in units other than those of the COGCC standard (standard). For the purposes of comparison to the standards, all laboratory results were converted to the same units as the standard.

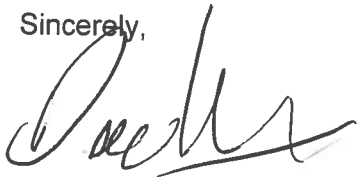
bgs -- below ground surface
 TPH -- total of laboratory analyzed GRO + DRO
 SAR -- Sodium Absorption Ration
 ESP -- Exchangeable Sodium Percentage
 ND -- below laboratory method detection limits - varies
 PPM -- parts per million
 N/A -- not applicable
 NS-- no standard

Closure Request

Based on the test results presented above, Wesco is requesting permission to close the excavation with no further excavation or testing required. We anticipate using soil from the treated Rudnik soil pile (to be discussed in a separate request for closure) to backfill the excavation. This work will be completed immediately prior to starting the Linker battery remediation (also a separate project) in order to reduce contractor mobilization costs.

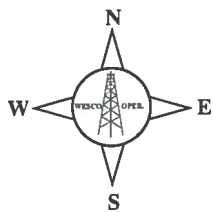
If you have any questions or require further information, please feel free to contact me at 307-577-5329 or at the address on this letterhead.

Sincerely,

A handwritten signature in black ink, appearing to read 'Dave Weinert', with a stylized, cursive script.

Dave Weinert
HSE Coordinator
Wesco Operating, Inc.

Encl; Battery Map
Excavation photos
Pit excavation drawing
Soil Laboratory Analysis (3 sets of data)



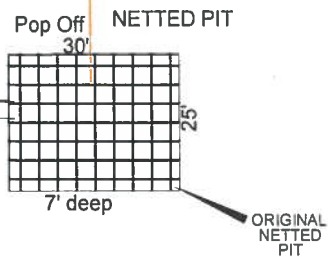
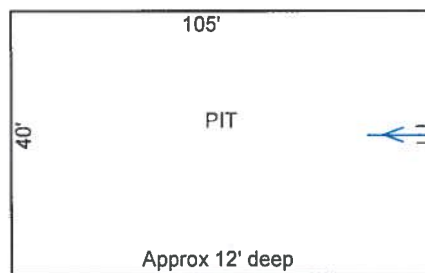
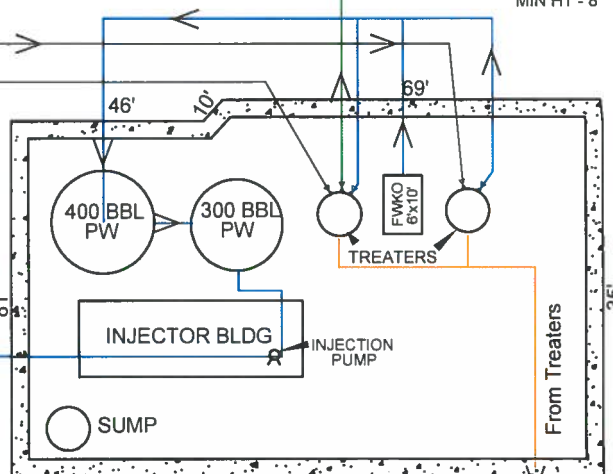
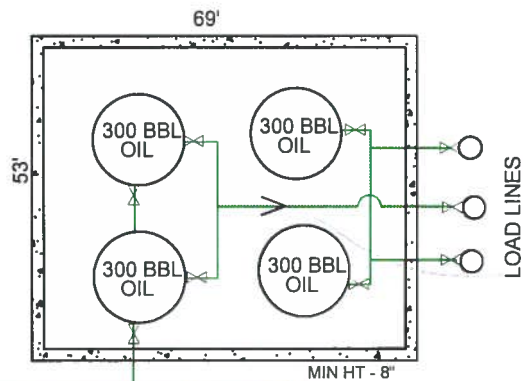
PROPANE TANKS



32-37



33-27



INJECTION WELL

LEGEND

- WATER LINES
- GAS LINES
- OIL LINES

— ORIGINAL PIT

WESCO OPERATING, INC.
OIL & GAS OPERATIONS

RUDNIK COMBINED BATTERY
NESE Sec. 27, T3S, R51W
Justice Field
Washington Co., Colorado

6/10/13 ENG. Brian Meidinger

To Files DWG. Facility Schematic

39.762672, -103.067347

**COGCC Remediation Project #7611
Rudnik Combined Battery
Skim Pit Excavation
Photo Log**



Figure 1; Skim pit prior to removal.



Figure 2; On-going pit excavation.



Figure 3; Excavation continues.



Figure 4; Overview of excavation.



Figure 5; Excavation at the end of the first round of removal work.



Figure 6; Second round of excavation working west.



Figure 7; Former skim pit at end of second round of excavation.

End of photo log.



WESCO OPERATING, INC.
OIL & GAS OPERATIONS

RUDNIK COMBINED BATTERY
NESE Sec. 27, T3S, R51W
Justice Field
Washington Co., Colorado

DATE: 11/20/12	ENG: Brian Meidinger
----------------	----------------------

SCALE: To Fit	DWG: Facility Schematic
---------------	-------------------------

39.762672, -103.067347

TestAmerica

THE LEADER IN ENVIRONMENTAL TESTING

ANALYTICAL REPORT

TestAmerica Laboratories, Inc.

TestAmerica Denver

4955 Yarrow Street

Arvada, CO 80002

Tel: (303)736-0100

TestAmerica Job ID: 280-40278-1

Client Project/Site: Wesco Op. Inc - Linker & Rodnick

For:

Wesco Operating, Inc

120 S. Durbin Street

PO BOX 1650

Casper, Wyoming 82602

Attn: Dave Weinert



Authorized for release by:

3/29/2013 12:43:18 PM

Lisa Uriell

Project Manager II

lisa.uriell@testamericainc.com

Designee for

Corinne Krier

Project Manager I

corinne.krier@testamericainc.com

LINKS

Review your project
results through

Total Access

Have a Question?



Visit us at:

www.testamericainc.com

The test results in this report meet all 2003 NELAC and 2009 TNI requirements for accredited parameters, exceptions are noted in this report. This report may not be reproduced except in full, and with written approval from the laboratory. For questions please contact the Project Manager at the e-mail address or telephone number listed on this page.

This report has been electronically signed and authorized by the signatory. Electronic signature is intended to be the legally binding equivalent of a traditionally handwritten signature.

Results relate only to the items tested and the sample(s) as received by the laboratory.

Table of Contents

Cover Page	1
Table of Contents	2
Case Narrative	3
Definitions	5
Detection Summary	6
Method Summary	8
Sample Summary	9
Client Sample Results	10
QC Sample Results	15
QC Association	20
Chronicle	23
Receipt Checklists	25
Chain of Custody	26

Case Narrative

Client: Wesco Operating, Inc
Project/Site: Wesco Op. Inc - Linker & Rodnick

TestAmerica Job ID: 280-40278-1

Job ID: 280-40278-1

Laboratory: TestAmerica Denver

Narrative

CASE NARRATIVE

Client: Wesco Operating, Inc

Project: Wesco Op. Inc - Linker & Rodnick

Report Number: 280-40278-1

With the exceptions noted as flags or footnotes, standard analytical protocols were followed in the analysis of the samples and no problems were encountered or anomalies observed. In addition all laboratory quality control samples were within established control limits, with any exceptions noted below. Each sample was analyzed to achieve the lowest possible reporting limit within the constraints of the method. In some cases, due to interference or analytes present at high concentrations, samples were diluted. For diluted samples, the reporting limits are adjusted relative to the dilution required.

Calculations are performed before rounding to avoid round-off errors in calculated results.

All holding times were met and proper preservation noted for the methods performed on these samples, unless otherwise detailed in the individual sections below.

RECEIPT

The samples were received on 03/23/2013; the samples arrived in good condition, properly preserved and on ice. The temperature of the coolers at receipt was -2.0°C.

The SAR analysis will be reported under a separate cover (280-40278-2.) All additional analyses can be found in this report (280-40278-1).

VOLATILE ORGANIC COMPOUNDS (GC-MS)

Samples #1 (280-40278-1), #2 (280-40278-2), #3 (280-40278-3), #4 (280-40278-4) and #5 (280-40278-5) were analyzed for volatile organic compounds (GC-MS) in accordance with EPA SW-846 Method 8260B. The samples were analyzed on 03/27/2013.

Surrogate 4-Bromofluorobenzene was recovered above the QC control limits in samples #1 (280-40278-1) and #4 (280-40278-4). This anomaly is due to obvious matrix interference; therefore, corrective action is deemed unnecessary.

The MS/MSD analyses associated with prep batch 280-166752 were performed on sample #1 (280-40278-1). The MS/MSD exhibited relative percent difference (RPD) data outside the QC control limits for Ethylbenzene, m-Xylene & p-Xylene, o-Xylene and Total Xylene. The acceptable LCS analysis data indicated that the analytical system was operating within control; therefore, corrective action is deemed unnecessary.

No other difficulties were encountered during the VOC analyses.

All other quality control parameters were within the acceptance limits.

GASOLINE RANGE ORGANICS (GRO)

Samples #1 (280-40278-1), #2 (280-40278-2), #3 (280-40278-3), #4 (280-40278-4) and #5 (280-40278-5) were analyzed for gasoline range organics (GRO) in accordance with EPA SW-846 Method 8015B - GRO. The samples were analyzed on 03/26/2013.

No difficulties were encountered during the GRO analyses.

All quality control parameters were within the acceptance limits.

Case Narrative

Client: Wesco Operating, Inc
Project/Site: Wesco Op. Inc - Linker & Rodnick

TestAmerica Job ID: 280-40278-1

Job ID: 280-40278-1 (Continued)

Laboratory: TestAmerica Denver (Continued)

DIESEL RANGE ORGANICS

Samples #1 (280-40278-1), #2 (280-40278-2), #3 (280-40278-3), #4 (280-40278-4) and #5 (280-40278-5) were analyzed for diesel range organics in accordance with EPA SW-846 Method 8015B - DRO. The samples were prepared on 03/25/2013 and analyzed on 03/26/2013 and 03/27/2013.

Surrogate o-Terphenyl was recovered below the QC control limits in sample #2 (280-40278-2). This anomaly is due to obvious matrix interference; therefore, corrective action is deemed unnecessary.

Each sample is analyzed to achieve the lowest possible reporting limits within the constraints of the method. Due to analytes present above the linear calibration curve, samples #3 (280-40278-3) and #4 (280-40278-4) had to be analyzed at a dilution. The reporting limits have been adjusted relative to the dilutions required.

Surrogate recoveries could not be reliably calculated for the diluted analysis of samples #3 (280-40278-3) and #4 (280-40278-4), because the extracts were diluted beyond the ability to quantitate recoveries.

The MS/MSD analyses associated with prep batch 280-166519 were performed on sample #5 (280-40278-5). The MS/MSD exhibited the matrix spike duplicate (MSD) percent recovery outside the QC control limits for Diesel Range Organics [C10-C28]. The acceptable LCS analysis data indicated that the analytical system was operating within control; therefore, corrective action is deemed unnecessary.

No other difficulties were encountered during the DRO analyses.

All other quality control parameters were within the acceptance limits.

PH

Samples #1 (280-40278-1), #2 (280-40278-2), #3 (280-40278-3), #4 (280-40278-4) and #5 (280-40278-5) were analyzed for pH in accordance with EPA SW-846 Method 9045C. The samples were leached on 03/27/2013 and analyzed on 03/27/2013.

No difficulties were encountered during the pH analyses.

All quality control parameters were within the acceptance limits.

SPECIFIC CONDUCTANCE

Samples #1 (280-40278-1), #2 (280-40278-2), #3 (280-40278-3), #4 (280-40278-4) and #5 (280-40278-5) were analyzed for specific conductance in accordance with EPA SW-846 9050A. The samples were leached on 03/28/2013 and analyzed on 03/28/2013.

No difficulties were encountered during the conductivity analyses.

All quality control parameters were within the acceptance limits.

PERCENT SOLIDS

Samples #1 (280-40278-1), #2 (280-40278-2), #3 (280-40278-3), #4 (280-40278-4) and #5 (280-40278-5) were analyzed for percent solids in accordance with EPA SW846 3550C. The samples were analyzed on 03/26/2013.

No difficulties were encountered during the % solids analyses.

All quality control parameters were within the acceptance limits.

Definitions/Glossary

Client: Wesco Operating, Inc
Project/Site: Wesco Op. Inc - Linker & Rodnick

TestAmerica Job ID: 280-40278-1

Qualifiers

GC/MS VOA

Qualifier	Qualifier Description
X	Surrogate is outside control limits
F	RPD of the MS and MSD exceeds the control limits
J	Result is less than the RL but greater than or equal to the MDL and the concentration is an approximate value.

GC VOA

Qualifier	Qualifier Description
J	Result is less than the RL but greater than or equal to the MDL and the concentration is an approximate value.

GC Semi VOA

Qualifier	Qualifier Description
X	Surrogate is outside control limits
D	Sample results are obtained from a dilution; the surrogate or matrix spike recoveries reported are calculated from diluted samples.
F	MS or MSD exceeds the control limits

Glossary

Abbreviation	These commonly used abbreviations may or may not be present in this report.
□	Listed under the "D" column to designate that the result is reported on a dry weight basis
%R	Percent Recovery
CNF	Contains no Free Liquid
DER	Duplicate error ratio (normalized absolute difference)
DL, RA, RE, IN	Indicates a Dilution, Re-analysis, Re-extraction, or additional Initial metals/anion analysis of the sample
DLC	Decision level concentration
MDA	Minimum detectable activity
EDL	Estimated Detection Limit
MDC	Minimum detectable concentration
MDL	Method Detection Limit
ML	Minimum Level (Dioxin)
ND	Not detected at the reporting limit (or MDL or EDL if shown)
PQL	Practical Quantitation Limit
QC	Quality Control
RER	Relative error ratio
RL	Reporting Limit or Requested Limit (Radiochemistry)
RPD	Relative Percent Difference, a measure of the relative difference between two points
TEF	Toxicity Equivalent Factor (Dioxin)
TEQ	Toxicity Equivalent Quotient (Dioxin)

Detection Summary

Client: Wesco Operating, Inc
Project/Site: Wesco Op. Inc - Linker & Rodnick

TestAmerica Job ID: 280-40278-1

Client Sample ID: #1

Lab Sample ID: 280-40278-1

Analyte	Result	Qualifier	RL	MDL	Unit	Dil Fac	D	Method	Prep Type
Gasoline Range Organics (GRO)	1.2	J	1.4	0.38	mg/Kg	1	☼	8015B	Total/NA
-C6-C10									
Diesel Range Organics [C10-C28]	72		4.8	0.82	mg/Kg	1	☼	8015B	Total/NA
Analyte	Result	Qualifier	RL	RL	Unit	Dil Fac	D	Method	Prep Type
pH adj. to 25 deg C	8.97		0.100	0.100	SU	1		9045C	Soluble
Temperature	20.7		1.00	1.00	Degrees C	1		9045C	Soluble
Specific Conductance	32		2.0	2.0	umhos/cm	1		9050A	Soluble

Client Sample ID: #2

Lab Sample ID: 280-40278-2

Analyte	Result	Qualifier	RL	MDL	Unit	Dil Fac	D	Method	Prep Type
Gasoline Range Organics (GRO)	2.4		1.5	0.42	mg/Kg	1	☼	8015B	Total/NA
-C6-C10									
Diesel Range Organics [C10-C28]	1100		5.0	0.84	mg/Kg	1	☼	8015B	Total/NA
Analyte	Result	Qualifier	RL	RL	Unit	Dil Fac	D	Method	Prep Type
pH adj. to 25 deg C	8.58		0.100	0.100	SU	1		9045C	Soluble
Temperature	20.3		1.00	1.00	Degrees C	1		9045C	Soluble
Specific Conductance	66		2.0	2.0	umhos/cm	1		9050A	Soluble

Client Sample ID: #3

Lab Sample ID: 280-40278-3

Analyte	Result	Qualifier	RL	MDL	Unit	Dil Fac	D	Method	Prep Type
Benzene	0.56	J	5.8	0.55	ug/Kg	1	☼	8260B	Total/NA
Diesel Range Organics [C10-C28]	1800		23	3.9	mg/Kg	5	☼	8015B	Total/NA
Analyte	Result	Qualifier	RL	RL	Unit	Dil Fac	D	Method	Prep Type
pH adj. to 25 deg C	8.74		0.100	0.100	SU	1		9045C	Soluble
Temperature	20.0		1.00	1.00	Degrees C	1		9045C	Soluble
Specific Conductance	94		2.0	2.0	umhos/cm	1		9050A	Soluble

Client Sample ID: #4

Lab Sample ID: 280-40278-4

Analyte	Result	Qualifier	RL	MDL	Unit	Dil Fac	D	Method	Prep Type
Benzene	1.3	J	5.7	0.53	ug/Kg	1	☼	8260B	Total/NA
Ethylbenzene	1.8	J	5.7	0.76	ug/Kg	1	☼	8260B	Total/NA
Toluene	5.0	J	5.7	0.78	ug/Kg	1	☼	8260B	Total/NA
m-Xylene & p-Xylene	5.0		2.8	1.2	ug/Kg	1	☼	8260B	Total/NA
o-Xylene	2.1	J	2.8	0.69	ug/Kg	1	☼	8260B	Total/NA
Xylenes, Total	7.2		2.8	0.69	ug/Kg	1	☼	8260B	Total/NA
Gasoline Range Organics (GRO)	47		1.5	0.40	mg/Kg	1	☼	8015B	Total/NA
-C6-C10									
Diesel Range Organics [C10-C28]	4200		48	8.1	mg/Kg	10	☼	8015B	Total/NA
Analyte	Result	Qualifier	RL	RL	Unit	Dil Fac	D	Method	Prep Type
pH adj. to 25 deg C	8.43		0.100	0.100	SU	1		9045C	Soluble
Temperature	20.3		1.00	1.00	Degrees C	1		9045C	Soluble
Specific Conductance	76		2.0	2.0	umhos/cm	1		9050A	Soluble

Client Sample ID: #5

Lab Sample ID: 280-40278-5

Analyte	Result	Qualifier	RL	MDL	Unit	Dil Fac	D	Method	Prep Type
Diesel Range Organics [C10-C28]	55		4.2	0.71	mg/Kg	1	☼	8015B	Total/NA

This Detection Summary does not include radiochemical test results.

TestAmerica Denver

Detection Summary

Client: Wesco Operating, Inc
Project/Site: Wesco Op. Inc - Linker & Rodnick

TestAmerica Job ID: 280-40278-1

Client Sample ID: #5 (Continued)

Lab Sample ID: 280-40278-5

Analyte	Result	Qualifier	RL	RL	Unit	Dil Fac	D	Method	Prep Type
pH adj. to 25 deg C	9.26		0.100	0.100	SU	1		9045C	Soluble
Temperature	20.6		1.00	1.00	Degrees C	1		9045C	Soluble
Specific Conductance	52		2.0	2.0	umhos/cm	1		9050A	Soluble

This Detection Summary does not include radiochemical test results.

TestAmerica Denver

Method Summary

Client: Wesco Operating, Inc
Project/Site: Wesco Op. Inc - Linker & Rodnick

TestAmerica Job ID: 280-40278-1

Method	Method Description	Protocol	Laboratory
8260B	Volatile Organic Compounds (GC/MS)	SW846	TAL DEN
8015B	Gasoline Range Organics - (GC)	SW846	TAL DEN
8015B	Diesel Range Organics (DRO) (GC)	SW846	TAL DEN
9045C	pH	SW846	TAL DEN
9050A	Specific Conductance	SW846	TAL DEN
Moisture	Percent Moisture	EPA	TAL DEN

Protocol References:

EPA = US Environmental Protection Agency

SW846 = "Test Methods For Evaluating Solid Waste, Physical/Chemical Methods", Third Edition, November 1986 And Its Updates.

Laboratory References:

TAL DEN = TestAmerica Denver, 4955 Yarrow Street, Arvada, CO 80002, TEL (303)736-0100

Sample Summary

Client: Wesco Operating, Inc
Project/Site: Wesco Op. Inc - Linker & Rodnick

TestAmerica Job ID: 280-40278-1

Lab Sample ID	Client Sample ID	Matrix	Collected	Received
280-40278-1	#1	Solid	03/22/13 01:30	03/23/13 08:00
280-40278-2	#2	Solid	03/22/13 01:45	03/23/13 08:00
280-40278-3	#3	Solid	03/22/13 01:50	03/23/13 08:00
280-40278-4	#4	Solid	03/22/13 02:00	03/23/13 08:00
280-40278-5	#5	Solid	03/22/13 02:10	03/23/13 08:00

Client Sample Results

Client: Wesco Operating, Inc
Project/Site: Wesco Op. Inc - Linker & Rodnick

TestAmerica Job ID: 280-40278-1

Method: 8260B - Volatile Organic Compounds (GC/MS)

Client Sample ID: #1

Date Collected: 03/22/13 01:30

Date Received: 03/23/13 08:00

Lab Sample ID: 280-40278-1

Matrix: Solid

Percent Solids: 82.4

Analyte	Result	Qualifier	RL	MDL	Unit	D	Prepared	Analyzed	Dil Fac
Benzene	ND		6.7	0.63	ug/Kg	⚙	03/26/13 23:14	03/27/13 03:04	1
Ethylbenzene	ND		6.7	0.90	ug/Kg	⚙	03/26/13 23:14	03/27/13 03:04	1
Toluene	ND		6.7	0.93	ug/Kg	⚙	03/26/13 23:14	03/27/13 03:04	1
m-Xylene & p-Xylene	ND		3.4	1.4	ug/Kg	⚙	03/26/13 23:14	03/27/13 03:04	1
o-Xylene	ND		3.4	0.82	ug/Kg	⚙	03/26/13 23:14	03/27/13 03:04	1
Xylenes, Total	ND		3.4	0.82	ug/Kg	⚙	03/26/13 23:14	03/27/13 03:04	1

Surrogate	%Recovery	Qualifier	Limits	Prepared	Analyzed	Dil Fac
1,2-Dichloroethane-d4 (Surr)	85		58 - 140	03/26/13 23:14	03/27/13 03:04	1
Toluene-d8 (Surr)	105		80 - 126	03/26/13 23:14	03/27/13 03:04	1
4-Bromofluorobenzene (Surr)	134	X	76 - 127	03/26/13 23:14	03/27/13 03:04	1
Dibromofluoromethane (Surr)	98		75 - 121	03/26/13 23:14	03/27/13 03:04	1

Client Sample ID: #2

Date Collected: 03/22/13 01:45

Date Received: 03/23/13 08:00

Lab Sample ID: 280-40278-2

Matrix: Solid

Percent Solids: 76.2

Analyte	Result	Qualifier	RL	MDL	Unit	D	Prepared	Analyzed	Dil Fac
Benzene	ND		5.5	0.52	ug/Kg	⚙	03/26/13 23:14	03/27/13 04:02	1
Ethylbenzene	ND		5.5	0.74	ug/Kg	⚙	03/26/13 23:14	03/27/13 04:02	1
Toluene	ND		5.5	0.76	ug/Kg	⚙	03/26/13 23:14	03/27/13 04:02	1
m-Xylene & p-Xylene	ND		2.7	1.1	ug/Kg	⚙	03/26/13 23:14	03/27/13 04:02	1
o-Xylene	ND		2.7	0.67	ug/Kg	⚙	03/26/13 23:14	03/27/13 04:02	1
Xylenes, Total	ND		2.7	0.67	ug/Kg	⚙	03/26/13 23:14	03/27/13 04:02	1

Surrogate	%Recovery	Qualifier	Limits	Prepared	Analyzed	Dil Fac
1,2-Dichloroethane-d4 (Surr)	83		58 - 140	03/26/13 23:14	03/27/13 04:02	1
Toluene-d8 (Surr)	101		80 - 126	03/26/13 23:14	03/27/13 04:02	1
4-Bromofluorobenzene (Surr)	105		76 - 127	03/26/13 23:14	03/27/13 04:02	1
Dibromofluoromethane (Surr)	98		75 - 121	03/26/13 23:14	03/27/13 04:02	1

Client Sample ID: #3

Date Collected: 03/22/13 01:50

Date Received: 03/23/13 08:00

Lab Sample ID: 280-40278-3

Matrix: Solid

Percent Solids: 79.5

Analyte	Result	Qualifier	RL	MDL	Unit	D	Prepared	Analyzed	Dil Fac
Benzene	0.56	J	5.8	0.55	ug/Kg	⚙	03/26/13 23:14	03/27/13 04:21	1
Ethylbenzene	ND		5.8	0.78	ug/Kg	⚙	03/26/13 23:14	03/27/13 04:21	1
Toluene	ND		5.8	0.80	ug/Kg	⚙	03/26/13 23:14	03/27/13 04:21	1
m-Xylene & p-Xylene	ND		2.9	1.2	ug/Kg	⚙	03/26/13 23:14	03/27/13 04:21	1
o-Xylene	ND		2.9	0.71	ug/Kg	⚙	03/26/13 23:14	03/27/13 04:21	1
Xylenes, Total	ND		2.9	0.71	ug/Kg	⚙	03/26/13 23:14	03/27/13 04:21	1

Surrogate	%Recovery	Qualifier	Limits	Prepared	Analyzed	Dil Fac
1,2-Dichloroethane-d4 (Surr)	84		58 - 140	03/26/13 23:14	03/27/13 04:21	1
Toluene-d8 (Surr)	103		80 - 126	03/26/13 23:14	03/27/13 04:21	1
4-Bromofluorobenzene (Surr)	103		76 - 127	03/26/13 23:14	03/27/13 04:21	1
Dibromofluoromethane (Surr)	97		75 - 121	03/26/13 23:14	03/27/13 04:21	1

TestAmerica Denver

Client Sample Results

Client: Wesco Operating, Inc
Project/Site: Wesco Op. Inc - Linker & Rodnick

TestAmerica Job ID: 280-40278-1

Method: 8260B - Volatile Organic Compounds (GC/MS)

Client Sample ID: #4

Date Collected: 03/22/13 02:00

Date Received: 03/23/13 08:00

Lab Sample ID: 280-40278-4

Matrix: Solid

Percent Solids: 81.4

Analyte	Result	Qualifier	RL	MDL	Unit	D	Prepared	Analyzed	Dil Fac
Benzene	1.3	J	5.7	0.53	ug/Kg	☼	03/26/13 23:14	03/27/13 04:40	1
Ethylbenzene	1.8	J	5.7	0.76	ug/Kg	☼	03/26/13 23:14	03/27/13 04:40	1
Toluene	5.0	J	5.7	0.78	ug/Kg	☼	03/26/13 23:14	03/27/13 04:40	1
m-Xylene & p-Xylene	5.0		2.8	1.2	ug/Kg	☼	03/26/13 23:14	03/27/13 04:40	1
o-Xylene	2.1	J	2.8	0.69	ug/Kg	☼	03/26/13 23:14	03/27/13 04:40	1
Xylenes, Total	7.2		2.8	0.69	ug/Kg	☼	03/26/13 23:14	03/27/13 04:40	1

Surrogate	%Recovery	Qualifier	Limits	Prepared	Analyzed	Dil Fac
1,2-Dichloroethane-d4 (Surr)	91		58 - 140	03/26/13 23:14	03/27/13 04:40	1
Toluene-d8 (Surr)	119		80 - 126	03/26/13 23:14	03/27/13 04:40	1
4-Bromofluorobenzene (Surr)	1219	X	76 - 127	03/26/13 23:14	03/27/13 04:40	1
Dibromofluoromethane (Surr)	105		75 - 121	03/26/13 23:14	03/27/13 04:40	1

Client Sample ID: #5

Date Collected: 03/22/13 02:10

Date Received: 03/23/13 08:00

Lab Sample ID: 280-40278-5

Matrix: Solid

Percent Solids: 91.2

Analyte	Result	Qualifier	RL	MDL	Unit	D	Prepared	Analyzed	Dil Fac
Benzene	ND		4.9	0.46	ug/Kg	☼	03/26/13 23:14	03/27/13 05:00	1
Ethylbenzene	ND		4.9	0.65	ug/Kg	☼	03/26/13 23:14	03/27/13 05:00	1
Toluene	ND		4.9	0.67	ug/Kg	☼	03/26/13 23:14	03/27/13 05:00	1
m-Xylene & p-Xylene	ND		2.4	1.0	ug/Kg	☼	03/26/13 23:14	03/27/13 05:00	1
o-Xylene	ND		2.4	0.60	ug/Kg	☼	03/26/13 23:14	03/27/13 05:00	1
Xylenes, Total	ND		2.4	0.60	ug/Kg	☼	03/26/13 23:14	03/27/13 05:00	1

Surrogate	%Recovery	Qualifier	Limits	Prepared	Analyzed	Dil Fac
1,2-Dichloroethane-d4 (Surr)	84		58 - 140	03/26/13 23:14	03/27/13 05:00	1
Toluene-d8 (Surr)	98		80 - 126	03/26/13 23:14	03/27/13 05:00	1
4-Bromofluorobenzene (Surr)	96		76 - 127	03/26/13 23:14	03/27/13 05:00	1
Dibromofluoromethane (Surr)	93		75 - 121	03/26/13 23:14	03/27/13 05:00	1

Method: 8015B - Gasoline Range Organics - (GC)

Client Sample ID: #1

Date Collected: 03/22/13 01:30

Date Received: 03/23/13 08:00

Lab Sample ID: 280-40278-1

Matrix: Solid

Percent Solids: 82.4

Analyte	Result	Qualifier	RL	MDL	Unit	D	Prepared	Analyzed	Dil Fac
Gasoline Range Organics (GRO) -C6-C10	1.2	J	1.4	0.38	mg/Kg	☼	03/25/13 11:38	03/26/13 19:34	1

Surrogate	%Recovery	Qualifier	Limits	Prepared	Analyzed	Dil Fac
a,a,a-Trifluorotoluene	90		77 - 123	03/25/13 11:38	03/26/13 19:34	1

Client Sample ID: #2

Date Collected: 03/22/13 01:45

Date Received: 03/23/13 08:00

Lab Sample ID: 280-40278-2

Matrix: Solid

Percent Solids: 76.2

Analyte	Result	Qualifier	RL	MDL	Unit	D	Prepared	Analyzed	Dil Fac
Gasoline Range Organics (GRO) -C6-C10	2.4		1.5	0.42	mg/Kg	☼	03/25/13 11:38	03/26/13 20:04	1

Surrogate	%Recovery	Qualifier	Limits	Prepared	Analyzed	Dil Fac
a,a,a-Trifluorotoluene	88		77 - 123	03/25/13 11:38	03/26/13 20:04	1

TestAmerica Denver

Client Sample Results

Client: Wesco Operating, Inc
Project/Site: Wesco Op. Inc - Linker & Rodnick

TestAmerica Job ID: 280-40278-1

Method: 8015B - Gasoline Range Organics - (GC)

Client Sample ID: #3

Date Collected: 03/22/13 01:50

Date Received: 03/23/13 08:00

Lab Sample ID: 280-40278-3

Matrix: Solid

Percent Solids: 79.5

Analyte	Result	Qualifier	RL	MDL	Unit	D	Prepared	Analyzed	Dil Fac
Gasoline Range Organics (GRO)	ND		1.5	0.41	mg/Kg	☼	03/25/13 11:38	03/26/13 20:33	1
-C6-C10									
Surrogate	%Recovery	Qualifier	Limits				Prepared	Analyzed	Dil Fac
a,a,a-Trifluorotoluene	80		77 - 123				03/25/13 11:38	03/26/13 20:33	1

Client Sample ID: #4

Date Collected: 03/22/13 02:00

Date Received: 03/23/13 08:00

Lab Sample ID: 280-40278-4

Matrix: Solid

Percent Solids: 81.4

Analyte	Result	Qualifier	RL	MDL	Unit	D	Prepared	Analyzed	Dil Fac
Gasoline Range Organics (GRO)	47		1.5	0.40	mg/Kg	☼	03/25/13 11:38	03/26/13 21:03	1
-C6-C10									
Surrogate	%Recovery	Qualifier	Limits				Prepared	Analyzed	Dil Fac
a,a,a-Trifluorotoluene	97		77 - 123				03/25/13 11:38	03/26/13 21:03	1

Client Sample ID: #5

Date Collected: 03/22/13 02:10

Date Received: 03/23/13 08:00

Lab Sample ID: 280-40278-5

Matrix: Solid

Percent Solids: 91.2

Analyte	Result	Qualifier	RL	MDL	Unit	D	Prepared	Analyzed	Dil Fac
Gasoline Range Organics (GRO)	ND		1.3	0.35	mg/Kg	☼	03/25/13 11:38	03/26/13 21:32	1
-C6-C10									
Surrogate	%Recovery	Qualifier	Limits				Prepared	Analyzed	Dil Fac
a,a,a-Trifluorotoluene	95		77 - 123				03/25/13 11:38	03/26/13 21:32	1

Method: 8015B - Diesel Range Organics (DRO) (GC)

Client Sample ID: #1

Date Collected: 03/22/13 01:30

Date Received: 03/23/13 08:00

Lab Sample ID: 280-40278-1

Matrix: Solid

Percent Solids: 82.4

Analyte	Result	Qualifier	RL	MDL	Unit	D	Prepared	Analyzed	Dil Fac
Diesel Range Organics [C10-C28]	72		4.8	0.82	mg/Kg	☼	03/25/13 15:30	03/26/13 15:56	1
Surrogate	%Recovery	Qualifier	Limits				Prepared	Analyzed	Dil Fac
o-Terphenyl	92		49 - 115				03/25/13 15:30	03/26/13 15:56	1

Client Sample ID: #2

Date Collected: 03/22/13 01:45

Date Received: 03/23/13 08:00

Lab Sample ID: 280-40278-2

Matrix: Solid

Percent Solids: 76.2

Analyte	Result	Qualifier	RL	MDL	Unit	D	Prepared	Analyzed	Dil Fac
Diesel Range Organics [C10-C28]	1100		5.0	0.84	mg/Kg	☼	03/25/13 15:30	03/26/13 16:25	1
Surrogate	%Recovery	Qualifier	Limits				Prepared	Analyzed	Dil Fac
o-Terphenyl	12	X	49 - 115				03/25/13 15:30	03/26/13 16:25	1

Client Sample ID: #3

Date Collected: 03/22/13 01:50

Date Received: 03/23/13 08:00

Lab Sample ID: 280-40278-3

Matrix: Solid

Percent Solids: 79.5

Analyte	Result	Qualifier	RL	MDL	Unit	D	Prepared	Analyzed	Dil Fac
Diesel Range Organics [C10-C28]	1800		23	3.9	mg/Kg	☼	03/25/13 15:30	03/27/13 10:00	5

TestAmerica Denver

Client Sample Results

Client: Wesco Operating, Inc
Project/Site: Wesco Op. Inc - Linker & Rodnick

TestAmerica Job ID: 280-40278-1

Method: 8015B - Diesel Range Organics (DRO) (GC) (Continued)

Surrogate	%Recovery	Qualifier	Limits	Prepared	Analyzed	Dil Fac
<i>o</i> -Terphenyl	0	D X	49 - 115	03/25/13 15:30	03/27/13 10:00	5

Client Sample ID: #4

Date Collected: 03/22/13 02:00

Date Received: 03/23/13 08:00

Lab Sample ID: 280-40278-4

Matrix: Solid

Percent Solids: 81.4

Analyte	Result	Qualifier	RL	MDL	Unit	D	Prepared	Analyzed	Dil Fac
Diesel Range Organics [C10-C28]	4200		48	8.1	mg/Kg	⚙	03/25/13 15:30	03/27/13 10:29	10

Surrogate	%Recovery	Qualifier	Limits	Prepared	Analyzed	Dil Fac
<i>o</i> -Terphenyl	0	D X	49 - 115	03/25/13 15:30	03/27/13 10:29	10

Client Sample ID: #5

Date Collected: 03/22/13 02:10

Date Received: 03/23/13 08:00

Lab Sample ID: 280-40278-5

Matrix: Solid

Percent Solids: 91.2

Analyte	Result	Qualifier	RL	MDL	Unit	D	Prepared	Analyzed	Dil Fac
Diesel Range Organics [C10-C28]	55		4.2	0.71	mg/Kg	⚙	03/25/13 15:30	03/26/13 17:53	1

Surrogate	%Recovery	Qualifier	Limits	Prepared	Analyzed	Dil Fac
<i>o</i> -Terphenyl	101		49 - 115	03/25/13 15:30	03/26/13 17:53	1

General Chemistry

Client Sample ID: #1

Date Collected: 03/22/13 01:30

Date Received: 03/23/13 08:00

Lab Sample ID: 280-40278-1

Matrix: Solid

Analyte	Result	Qualifier	RL	RL	Unit	D	Prepared	Analyzed	Dil Fac
Percent Moisture	18		0.10	0.10	%	—		03/26/13 07:56	1

Client Sample ID: #2

Date Collected: 03/22/13 01:45

Date Received: 03/23/13 08:00

Lab Sample ID: 280-40278-2

Matrix: Solid

Analyte	Result	Qualifier	RL	RL	Unit	D	Prepared	Analyzed	Dil Fac
Percent Moisture	24		0.10	0.10	%	—		03/26/13 07:56	1

Client Sample ID: #3

Date Collected: 03/22/13 01:50

Date Received: 03/23/13 08:00

Lab Sample ID: 280-40278-3

Matrix: Solid

Analyte	Result	Qualifier	RL	RL	Unit	D	Prepared	Analyzed	Dil Fac
Percent Moisture	20		0.10	0.10	%	—		03/26/13 07:56	1

Client Sample ID: #4

Date Collected: 03/22/13 02:00

Date Received: 03/23/13 08:00

Lab Sample ID: 280-40278-4

Matrix: Solid

Analyte	Result	Qualifier	RL	RL	Unit	D	Prepared	Analyzed	Dil Fac
Percent Moisture	19		0.10	0.10	%	—		03/26/13 07:56	1

Client Sample ID: #5

Date Collected: 03/22/13 02:10

Date Received: 03/23/13 08:00

Lab Sample ID: 280-40278-5

Matrix: Solid

Analyte	Result	Qualifier	RL	RL	Unit	D	Prepared	Analyzed	Dil Fac
Percent Moisture	8.8		0.10	0.10	%	—		03/26/13 07:56	1

TestAmerica Denver

Client Sample Results

Client: Wesco Operating, Inc
Project/Site: Wesco Op. Inc - Linker & Rodnick

TestAmerica Job ID: 280-40278-1

General Chemistry - Soluble

Client Sample ID: #1

Date Collected: 03/22/13 01:30

Date Received: 03/23/13 08:00

Lab Sample ID: 280-40278-1

Matrix: Solid

Analyte	Result	Qualifier	RL	RL	Unit	D	Prepared	Analyzed	Dil Fac
pH adj. to 25 deg C	8.97		0.100	0.100	SU			03/27/13 18:06	1
Temperature	20.7		1.00	1.00	Degrees C			03/27/13 18:06	1
Specific Conductance	32		2.0	2.0	umhos/cm			03/28/13 11:22	1

Client Sample ID: #2

Date Collected: 03/22/13 01:45

Date Received: 03/23/13 08:00

Lab Sample ID: 280-40278-2

Matrix: Solid

Analyte	Result	Qualifier	RL	RL	Unit	D	Prepared	Analyzed	Dil Fac
pH adj. to 25 deg C	8.58		0.100	0.100	SU			03/27/13 18:06	1
Temperature	20.3		1.00	1.00	Degrees C			03/27/13 18:06	1
Specific Conductance	66		2.0	2.0	umhos/cm			03/28/13 11:22	1

Client Sample ID: #3

Date Collected: 03/22/13 01:50

Date Received: 03/23/13 08:00

Lab Sample ID: 280-40278-3

Matrix: Solid

Analyte	Result	Qualifier	RL	RL	Unit	D	Prepared	Analyzed	Dil Fac
pH adj. to 25 deg C	8.74		0.100	0.100	SU			03/27/13 18:06	1
Temperature	20.0		1.00	1.00	Degrees C			03/27/13 18:06	1
Specific Conductance	94		2.0	2.0	umhos/cm			03/28/13 11:22	1

Client Sample ID: #4

Date Collected: 03/22/13 02:00

Date Received: 03/23/13 08:00

Lab Sample ID: 280-40278-4

Matrix: Solid

Analyte	Result	Qualifier	RL	RL	Unit	D	Prepared	Analyzed	Dil Fac
pH adj. to 25 deg C	8.43		0.100	0.100	SU			03/27/13 18:06	1
Temperature	20.3		1.00	1.00	Degrees C			03/27/13 18:06	1
Specific Conductance	76		2.0	2.0	umhos/cm			03/28/13 11:22	1

Client Sample ID: #5

Date Collected: 03/22/13 02:10

Date Received: 03/23/13 08:00

Lab Sample ID: 280-40278-5

Matrix: Solid

Analyte	Result	Qualifier	RL	RL	Unit	D	Prepared	Analyzed	Dil Fac
pH adj. to 25 deg C	9.26		0.100	0.100	SU			03/27/13 18:06	1
Temperature	20.6		1.00	1.00	Degrees C			03/27/13 18:06	1
Specific Conductance	52		2.0	2.0	umhos/cm			03/28/13 11:22	1

QC Sample Results

Client: Wesco Operating, Inc
Project/Site: Wesco Op. Inc - Linker & Rodnick

TestAmerica Job ID: 280-40278-1

Method: 8260B - Volatile Organic Compounds (GC/MS)

Lab Sample ID: MB 280-166752/1-A

Matrix: Solid

Analysis Batch: 166756

Client Sample ID: Method Blank

Prep Type: Total/NA

Prep Batch: 166752

Analyte	MB Result	MB Qualifier	RL	MDL	Unit	D	Prepared	Analyzed	Dil Fac
Benzene	ND		5.0	0.47	ug/Kg		03/26/13 13:00	03/26/13 21:10	1
Ethylbenzene	ND		5.0	0.67	ug/Kg		03/26/13 13:00	03/26/13 21:10	1
Toluene	ND		5.0	0.69	ug/Kg		03/26/13 13:00	03/26/13 21:10	1
m-Xylene & p-Xylene	ND		2.5	1.0	ug/Kg		03/26/13 13:00	03/26/13 21:10	1
o-Xylene	ND		2.5	0.61	ug/Kg		03/26/13 13:00	03/26/13 21:10	1
Xylenes, Total	ND		2.5	0.61	ug/Kg		03/26/13 13:00	03/26/13 21:10	1

Surrogate	MB %Recovery	MB Qualifier	Limits	Prepared	Analyzed	Dil Fac
1,2-Dichloroethane-d4 (Surr)	84		58 - 140	03/26/13 13:00	03/26/13 21:10	1
Toluene-d8 (Surr)	100		80 - 126	03/26/13 13:00	03/26/13 21:10	1
4-Bromofluorobenzene (Surr)	101		76 - 127	03/26/13 13:00	03/26/13 21:10	1
Dibromofluoromethane (Surr)	94		75 - 121	03/26/13 13:00	03/26/13 21:10	1

Lab Sample ID: LCS 280-166752/2-A

Matrix: Solid

Analysis Batch: 166756

Client Sample ID: Lab Control Sample

Prep Type: Total/NA

Prep Batch: 166752

Analyte	Spike Added	LCS Result	LCS Qualifier	Unit	D	%Rec	%Rec. Limits
Benzene	50.0	49.9		ug/Kg		100	75 - 135
Ethylbenzene	50.0	50.9		ug/Kg		102	73 - 125
Toluene	50.0	50.7		ug/Kg		101	77 - 122
m-Xylene & p-Xylene	100	102		ug/Kg		102	77 - 135
o-Xylene	50.0	51.2		ug/Kg		102	75 - 135
Xylenes, Total	150	153		ug/Kg		102	76 - 135

Surrogate	LCS %Recovery	LCS Qualifier	Limits
1,2-Dichloroethane-d4 (Surr)	83		58 - 140
Toluene-d8 (Surr)	103		80 - 126
4-Bromofluorobenzene (Surr)	102		76 - 127
Dibromofluoromethane (Surr)	95		75 - 121

Lab Sample ID: 280-40278-1 MS

Matrix: Solid

Analysis Batch: 166756

Client Sample ID: #1

Prep Type: Total/NA

Prep Batch: 166752

Analyte	Sample Result	Sample Qualifier	Spike Added	MS Result	MS Qualifier	Unit	D	%Rec	%Rec. Limits
Benzene	ND		56.8	46.8		ug/Kg	☼	82	75 - 135
Ethylbenzene	ND		56.8	45.5		ug/Kg	☼	80	73 - 125
Toluene	ND		56.8	47.3		ug/Kg	☼	83	77 - 122
m-Xylene & p-Xylene	ND		114	89.4		ug/Kg	☼	79	77 - 135
o-Xylene	ND		56.8	45.9		ug/Kg	☼	81	75 - 135
Xylenes, Total	ND		170	135		ug/Kg	☼	79	76 - 135

Surrogate	MS %Recovery	MS Qualifier	Limits
1,2-Dichloroethane-d4 (Surr)	84		58 - 140
Toluene-d8 (Surr)	101		80 - 126
4-Bromofluorobenzene (Surr)	116		76 - 127

TestAmerica Denver

QC Sample Results

Client: Wesco Operating, Inc
Project/Site: Wesco Op. Inc - Linker & Rodnick

TestAmerica Job ID: 280-40278-1

Method: 8260B - Volatile Organic Compounds (GC/MS) (Continued)

Lab Sample ID: 280-40278-1 MS

Matrix: Solid

Analysis Batch: 166756

Client Sample ID: #1

Prep Type: Total/NA

Prep Batch: 166752

Surrogate	MS %Recovery	MS Qualifier	Limits
Dibromofluoromethane (Surr)	95		75 - 121

Lab Sample ID: 280-40278-1 MSD

Matrix: Solid

Analysis Batch: 166756

Client Sample ID: #1

Prep Type: Total/NA

Prep Batch: 166752

Analyte	Sample Result	Sample Qualifier	Spike Added	MSD Result	MSD Qualifier	Unit	D	%Rec	%Rec. Limits	RPD	RPD Limit
Benzene	ND		56.5	54.9		ug/Kg	☼	97	75 - 135	16	20
Ethylbenzene	ND		56.5	58.9	F	ug/Kg	☼	104	73 - 125	26	20
Toluene	ND		56.5	54.3		ug/Kg	☼	96	77 - 122	14	20
m-Xylene & p-Xylene	ND		113	117	F	ug/Kg	☼	103	77 - 135	27	20
o-Xylene	ND		56.5	61.3	F	ug/Kg	☼	108	75 - 135	29	20
Xylenes, Total	ND		170	178	F	ug/Kg	☼	105	76 - 135	27	20

Surrogate	MSD %Recovery	MSD Qualifier	Limits
1,2-Dichloroethane-d4 (Surr)	81		58 - 140
Toluene-d8 (Surr)	107		80 - 126
4-Bromofluorobenzene (Surr)	124		76 - 127
Dibromofluoromethane (Surr)	95		75 - 121

Method: 8015B - Gasoline Range Organics - (GC)

Lab Sample ID: MB 280-166476/1-A

Matrix: Solid

Analysis Batch: 166500

Client Sample ID: Method Blank

Prep Type: Total/NA

Prep Batch: 166476

Analyte	MB Result	MB Qualifier	RL	MDL	Unit	D	Prepared	Analyzed	Dil Fac
Gasoline Range Organics (GRO) -C6-C10	ND		1.2	0.32	mg/Kg		03/25/13 11:38	03/25/13 21:25	1

Surrogate	MB %Recovery	MB Qualifier	Limits	Prepared	Analyzed	Dil Fac
a,a,a-Trifluorotoluene	101		77 - 123	03/25/13 11:38	03/25/13 21:25	1

Lab Sample ID: LCS 280-166476/2-A

Matrix: Solid

Analysis Batch: 166500

Client Sample ID: Lab Control Sample

Prep Type: Total/NA

Prep Batch: 166476

Analyte	Spike Added	LCS Result	LCS Qualifier	Unit	D	%Rec	%Rec. Limits
Gasoline Range Organics (GRO) -C6-C10	5.42	5.85		mg/Kg		108	85 - 153

Surrogate	LCS %Recovery	LCS Qualifier	Limits
a,a,a-Trifluorotoluene	104		77 - 123

TestAmerica Denver

QC Sample Results

Client: Wesco Operating, Inc
Project/Site: Wesco Op. Inc - Linker & Rodnick

TestAmerica Job ID: 280-40278-1

Method: 8015B - Gasoline Range Organics - (GC) (Continued)

Lab Sample ID: LCSD 280-166476/3-A

Matrix: Solid

Analysis Batch: 166500

Client Sample ID: Lab Control Sample Dup

Prep Type: Total/NA

Prep Batch: 166476

Analyte	Spike Added	LCSD Result	LCSD Qualifier	Unit	D	%Rec	%Rec. Limits	RPD	RPD Limit
Gasoline Range Organics (GRO) -C6-C10	5.38	5.80		mg/Kg		108	85 - 153	1	30
Surrogate	%Recovery	LCSD Qualifier	Limits						
a,a,a-Trifluorotoluene	104		77 - 123						

Method: 8015B - Diesel Range Organics (DRO) (GC)

Lab Sample ID: MB 280-166519/1-A

Matrix: Solid

Analysis Batch: 166669

Client Sample ID: Method Blank

Prep Type: Total/NA

Prep Batch: 166519

Analyte	MB Result	MB Qualifier	RL	MDL	Unit	D	Prepared	Analyzed	Dil Fac
Diesel Range Organics [C10-C28]	ND		4.0	0.67	mg/Kg		03/25/13 15:30	03/26/13 14:57	1
Surrogate	%Recovery	MB Qualifier	Limits				Prepared	Analyzed	Dil Fac
o-Terphenyl	99		49 - 115				03/25/13 15:30	03/26/13 14:57	1

Lab Sample ID: LCS 280-166519/2-A

Matrix: Solid

Analysis Batch: 166669

Client Sample ID: Lab Control Sample

Prep Type: Total/NA

Prep Batch: 166519

Analyte	Spike Added	LCS Result	LCS Qualifier	Unit	D	%Rec	%Rec. Limits		
Diesel Range Organics [C10-C28]	64.2	59.1		mg/Kg		92	53 - 115		
Surrogate	%Recovery	LCS Qualifier	Limits						
o-Terphenyl	97		49 - 115						

Lab Sample ID: 280-40278-5 MS

Matrix: Solid

Analysis Batch: 166669

Client Sample ID: #5

Prep Type: Total/NA

Prep Batch: 166519

Analyte	Sample Result	Sample Qualifier	Spike Added	MS Result	MS Qualifier	Unit	D	%Rec	%Rec. Limits		
Diesel Range Organics [C10-C28]	55		72.7	103		mg/Kg	☼	66	56 - 115		
Surrogate	%Recovery	MS Qualifier	Limits								
o-Terphenyl	93		49 - 115								

Lab Sample ID: 280-40278-5 MSD

Matrix: Solid

Analysis Batch: 166669

Client Sample ID: #5

Prep Type: Total/NA

Prep Batch: 166519

Analyte	Sample Result	Sample Qualifier	Spike Added	MSD Result	MSD Qualifier	Unit	D	%Rec	%Rec. Limits	RPD	RPD Limit
Diesel Range Organics [C10-C28]	55		67.3	87.3	F	mg/Kg	☼	48	56 - 115	17	23

TestAmerica Denver

QC Sample Results

Client: Wesco Operating, Inc
Project/Site: Wesco Op. Inc - Linker & Rodnick

TestAmerica Job ID: 280-40278-1

Method: 8015B - Diesel Range Organics (DRO) (GC) (Continued)

Lab Sample ID: 280-40278-5 MSD

Matrix: Solid

Analysis Batch: 166669

Client Sample ID: #5

Prep Type: Total/NA

Prep Batch: 166519

Surrogate	MSD %Recovery	MSD Qualifier	Limits
o-Terphenyl	100		49 - 115

Method: 9045C - pH

Lab Sample ID: LCS 280-166935/49

Matrix: Solid

Analysis Batch: 166935

Client Sample ID: Lab Control Sample

Prep Type: Total/NA

Analyte	Spike Added	LCS Result	LCS Qualifier	Unit	D	%Rec	%Rec. Limits
pH adj. to 25 deg C	7.00	7.000		SU		100	97 - 103

Lab Sample ID: LCSD 280-166935/50

Matrix: Solid

Analysis Batch: 166935

Client Sample ID: Lab Control Sample Dup

Prep Type: Total/NA

Analyte	Spike Added	LCSD Result	LCSD Qualifier	Unit	D	%Rec	%Rec. Limits	RPD	RPD Limit
pH adj. to 25 deg C	7.00	7.000		SU		100	97 - 103	0	5

Lab Sample ID: 280-40278-1 DU

Matrix: Solid

Analysis Batch: 166935

Client Sample ID: #1

Prep Type: Soluble

Analyte	Sample Result	Sample Qualifier	DU Result	DU Qualifier	Unit	D	RPD	RPD Limit
pH adj. to 25 deg C	8.97		8.950		SU		0.2	5
Temperature	20.7		20.70		Degrees C		0	5

Method: 9050A - Specific Conductance

Lab Sample ID: MB 280-167041/32

Matrix: Solid

Analysis Batch: 167041

Client Sample ID: Method Blank

Prep Type: Total/NA

Analyte	MB Result	MB Qualifier	RL	RL	Unit	D	Prepared	Analyzed	Dil Fac
Specific Conductance	ND		2.0	2.0	umhos/cm			03/28/13 11:22	1

Lab Sample ID: LCS 280-167041/3

Matrix: Solid

Analysis Batch: 167041

Client Sample ID: Lab Control Sample

Prep Type: Total/NA

Analyte	Spike Added	LCS Result	LCS Qualifier	Unit	D	%Rec	%Rec. Limits
Specific Conductance	1410	1390		umhos/cm		99	90 - 110

Lab Sample ID: LCSD 280-167041/31

Matrix: Solid

Analysis Batch: 167041

Client Sample ID: Lab Control Sample Dup

Prep Type: Total/NA

Analyte	Spike Added	LCSD Result	LCSD Qualifier	Unit	D	%Rec	%Rec. Limits	RPD	RPD Limit
Specific Conductance	1410	1390		umhos/cm		99	90 - 110	0	10

TestAmerica Denver

QC Sample Results

Client: Wesco Operating, Inc
Project/Site: Wesco Op. Inc - Linker & Rodnick

TestAmerica Job ID: 280-40278-1

Method: 9050A - Specific Conductance (Continued)

Lab Sample ID: LCSD 280-167041/4

Matrix: Solid

Analysis Batch: 167041

Client Sample ID: Lab Control Sample Dup

Prep Type: Total/NA

Analyte	Spike Added	LCSD Result	LCSD Qualifier	Unit	D	%Rec	%Rec. Limits	RPD	RPD Limit
Specific Conductance	1410	1380		umhos/cm		98	90 - 110	1	10

Lab Sample ID: MB 280-167037/1-A

Matrix: Solid

Analysis Batch: 167041

Client Sample ID: Method Blank

Prep Type: Soluble

Analyte	MB Result	MB Qualifier	RL	RL	Unit	D	Prepared	Analyzed	Dil Fac
Specific Conductance	ND		2.0	2.0	umhos/cm			03/28/13 11:22	1

Lab Sample ID: 280-40278-1 DU

Matrix: Solid

Analysis Batch: 167041

Client Sample ID: #1

Prep Type: Soluble

Analyte	Sample Result	Sample Qualifier	DU Result	DU Qualifier	Unit	D	RPD	RPD Limit
Specific Conductance	32		31.7		umhos/cm		0.3	20

QC Association Summary

Client: Wesco Operating, Inc
Project/Site: Wesco Op. Inc - Linker & Rodnick

TestAmerica Job ID: 280-40278-1

GC/MS VOA

Prep Batch: 166752

Lab Sample ID	Client Sample ID	Prep Type	Matrix	Method	Prep Batch
280-40278-1	#1	Total/NA	Solid	5030B	
280-40278-1 MS	#1	Total/NA	Solid	5030B	
280-40278-1 MSD	#1	Total/NA	Solid	5030B	
280-40278-2	#2	Total/NA	Solid	5030B	
280-40278-3	#3	Total/NA	Solid	5030B	
280-40278-4	#4	Total/NA	Solid	5030B	
280-40278-5	#5	Total/NA	Solid	5030B	
LCS 280-166752/2-A	Lab Control Sample	Total/NA	Solid	5030B	
MB 280-166752/1-A	Method Blank	Total/NA	Solid	5030B	

Analysis Batch: 166756

Lab Sample ID	Client Sample ID	Prep Type	Matrix	Method	Prep Batch
280-40278-1	#1	Total/NA	Solid	8260B	166752
280-40278-1 MS	#1	Total/NA	Solid	8260B	166752
280-40278-1 MSD	#1	Total/NA	Solid	8260B	166752
280-40278-2	#2	Total/NA	Solid	8260B	166752
280-40278-3	#3	Total/NA	Solid	8260B	166752
280-40278-4	#4	Total/NA	Solid	8260B	166752
280-40278-5	#5	Total/NA	Solid	8260B	166752
LCS 280-166752/2-A	Lab Control Sample	Total/NA	Solid	8260B	166752
MB 280-166752/1-A	Method Blank	Total/NA	Solid	8260B	166752

GC VOA

Prep Batch: 166476

Lab Sample ID	Client Sample ID	Prep Type	Matrix	Method	Prep Batch
280-40278-1	#1	Total/NA	Solid	5030B	
280-40278-2	#2	Total/NA	Solid	5030B	
280-40278-3	#3	Total/NA	Solid	5030B	
280-40278-4	#4	Total/NA	Solid	5030B	
280-40278-5	#5	Total/NA	Solid	5030B	
LCS 280-166476/2-A	Lab Control Sample	Total/NA	Solid	5030B	
LCSD 280-166476/3-A	Lab Control Sample Dup	Total/NA	Solid	5030B	
MB 280-166476/1-A	Method Blank	Total/NA	Solid	5030B	

Analysis Batch: 166500

Lab Sample ID	Client Sample ID	Prep Type	Matrix	Method	Prep Batch
LCS 280-166476/2-A	Lab Control Sample	Total/NA	Solid	8015B	166476
LCSD 280-166476/3-A	Lab Control Sample Dup	Total/NA	Solid	8015B	166476
MB 280-166476/1-A	Method Blank	Total/NA	Solid	8015B	166476

Analysis Batch: 166674

Lab Sample ID	Client Sample ID	Prep Type	Matrix	Method	Prep Batch
280-40278-1	#1	Total/NA	Solid	8015B	166476
280-40278-2	#2	Total/NA	Solid	8015B	166476
280-40278-3	#3	Total/NA	Solid	8015B	166476
280-40278-4	#4	Total/NA	Solid	8015B	166476
280-40278-5	#5	Total/NA	Solid	8015B	166476

TestAmerica Denver

QC Association Summary

Client: Wesco Operating, Inc
Project/Site: Wesco Op. Inc - Linker & Rodnick

TestAmerica Job ID: 280-40278-1

GC Semi VOA

Prep Batch: 166519

Lab Sample ID	Client Sample ID	Prep Type	Matrix	Method	Prep Batch
280-40278-1	#1	Total/NA	Solid	3546	
280-40278-2	#2	Total/NA	Solid	3546	
280-40278-3	#3	Total/NA	Solid	3546	
280-40278-4	#4	Total/NA	Solid	3546	
280-40278-5	#5	Total/NA	Solid	3546	
280-40278-5 MS	#5	Total/NA	Solid	3546	
280-40278-5 MSD	#5	Total/NA	Solid	3546	
LCS 280-166519/2-A	Lab Control Sample	Total/NA	Solid	3546	
MB 280-166519/1-A	Method Blank	Total/NA	Solid	3546	

Analysis Batch: 166669

Lab Sample ID	Client Sample ID	Prep Type	Matrix	Method	Prep Batch
280-40278-1	#1	Total/NA	Solid	8015B	166519
280-40278-2	#2	Total/NA	Solid	8015B	166519
280-40278-3	#3	Total/NA	Solid	8015B	166519
280-40278-4	#4	Total/NA	Solid	8015B	166519
280-40278-5	#5	Total/NA	Solid	8015B	166519
280-40278-5 MS	#5	Total/NA	Solid	8015B	166519
280-40278-5 MSD	#5	Total/NA	Solid	8015B	166519
LCS 280-166519/2-A	Lab Control Sample	Total/NA	Solid	8015B	166519
MB 280-166519/1-A	Method Blank	Total/NA	Solid	8015B	166519

General Chemistry

Analysis Batch: 166576

Lab Sample ID	Client Sample ID	Prep Type	Matrix	Method	Prep Batch
280-40278-1	#1	Total/NA	Solid	Moisture	
280-40278-2	#2	Total/NA	Solid	Moisture	
280-40278-3	#3	Total/NA	Solid	Moisture	
280-40278-4	#4	Total/NA	Solid	Moisture	
280-40278-5	#5	Total/NA	Solid	Moisture	

Leach Batch: 166894

Lab Sample ID	Client Sample ID	Prep Type	Matrix	Method	Prep Batch
280-40278-1	#1	Soluble	Solid	DI Leach	
280-40278-1 DU	#1	Soluble	Solid	DI Leach	
280-40278-2	#2	Soluble	Solid	DI Leach	
280-40278-3	#3	Soluble	Solid	DI Leach	
280-40278-4	#4	Soluble	Solid	DI Leach	
280-40278-5	#5	Soluble	Solid	DI Leach	

Analysis Batch: 166935

Lab Sample ID	Client Sample ID	Prep Type	Matrix	Method	Prep Batch
280-40278-1	#1	Soluble	Solid	9045C	166894
280-40278-1 DU	#1	Soluble	Solid	9045C	166894
280-40278-2	#2	Soluble	Solid	9045C	166894
280-40278-3	#3	Soluble	Solid	9045C	166894
280-40278-4	#4	Soluble	Solid	9045C	166894
280-40278-5	#5	Soluble	Solid	9045C	166894
LCS 280-166935/49	Lab Control Sample	Total/NA	Solid	9045C	

TestAmerica Denver

QC Association Summary

Client: Wesco Operating, Inc
Project/Site: Wesco Op. Inc - Linker & Rodnick

TestAmerica Job ID: 280-40278-1

General Chemistry (Continued)

Analysis Batch: 166935 (Continued)

Lab Sample ID	Client Sample ID	Prep Type	Matrix	Method	Prep Batch
LCSD 280-166935/50	Lab Control Sample Dup	Total/NA	Solid	9045C	

Leach Batch: 167037

Lab Sample ID	Client Sample ID	Prep Type	Matrix	Method	Prep Batch
280-40278-1	#1	Soluble	Solid	DI Leach	
280-40278-1 DU	#1	Soluble	Solid	DI Leach	
280-40278-2	#2	Soluble	Solid	DI Leach	
280-40278-3	#3	Soluble	Solid	DI Leach	
280-40278-4	#4	Soluble	Solid	DI Leach	
280-40278-5	#5	Soluble	Solid	DI Leach	
MB 280-167037/1-A	Method Blank	Soluble	Solid	DI Leach	

Analysis Batch: 167041

Lab Sample ID	Client Sample ID	Prep Type	Matrix	Method	Prep Batch
280-40278-1	#1	Soluble	Solid	9050A	167037
280-40278-1 DU	#1	Soluble	Solid	9050A	167037
280-40278-2	#2	Soluble	Solid	9050A	167037
280-40278-3	#3	Soluble	Solid	9050A	167037
280-40278-4	#4	Soluble	Solid	9050A	167037
280-40278-5	#5	Soluble	Solid	9050A	167037
LCS 280-167041/3	Lab Control Sample	Total/NA	Solid	9050A	
LCSD 280-167041/31	Lab Control Sample Dup	Total/NA	Solid	9050A	
LCSD 280-167041/4	Lab Control Sample Dup	Total/NA	Solid	9050A	
MB 280-167037/1-A	Method Blank	Soluble	Solid	9050A	167037
MB 280-167041/32	Method Blank	Total/NA	Solid	9050A	

Lab Chronicle

Client: Wesco Operating, Inc
Project/Site: Wesco Op. Inc - Linker & Rodnick

TestAmerica Job ID: 280-40278-1

Client Sample ID: #1

Date Collected: 03/22/13 01:30

Date Received: 03/23/13 08:00

Lab Sample ID: 280-40278-1

Matrix: Solid

Percent Solids: 82.4

Prep Type	Batch Type	Batch Method	Run	Dil Factor	Initial Amount	Final Amount	Batch Number	Prepared or Analyzed	Analyst	Lab
Total/NA	Prep	5030B			4.525 g	5 mL	166752	03/26/13 23:14	AD	TAL DEN
Total/NA	Analysis	8260B		1			166756	03/27/13 03:04	AD	TAL DEN
Total/NA	Prep	5030B			10.32 g	10 mL	166476	03/25/13 11:38	TEM	TAL DEN
Total/NA	Analysis	8015B		1			166674	03/26/13 19:34	TEM	TAL DEN
Total/NA	Prep	3546			30.2 g	1000 uL	166519	03/25/13 15:30	BJ	TAL DEN
Total/NA	Analysis	8015B		1			166669	03/26/13 15:56	MRB	TAL DEN
Total/NA	Analysis	Moisture		1			166576	03/26/13 07:56	AFB	TAL DEN
Soluble	Leach	DI Leach			1.0 g	1.0 mL	166894	03/27/13 14:42	DA	TAL DEN
Soluble	Analysis	9045C		1			166935	03/27/13 18:06	DA	TAL DEN
Soluble	Leach	DI Leach			10.0 g	10.0 mL	167037	03/28/13 10:47	AK	TAL DEN
Soluble	Analysis	9050A		1			167041	03/28/13 11:22	AK	TAL DEN

Client Sample ID: #2

Date Collected: 03/22/13 01:45

Date Received: 03/23/13 08:00

Lab Sample ID: 280-40278-2

Matrix: Solid

Percent Solids: 76.2

Prep Type	Batch Type	Batch Method	Run	Dil Factor	Initial Amount	Final Amount	Batch Number	Prepared or Analyzed	Analyst	Lab
Total/NA	Prep	5030B			5.967 g	5 mL	166752	03/26/13 23:14	AD	TAL DEN
Total/NA	Analysis	8260B		1			166756	03/27/13 04:02	AD	TAL DEN
Total/NA	Prep	5030B			10.17 g	10 mL	166476	03/25/13 11:38	TEM	TAL DEN
Total/NA	Analysis	8015B		1			166674	03/26/13 20:04	TEM	TAL DEN
Total/NA	Prep	3546			31.7 g	1000 uL	166519	03/25/13 15:30	BJ	TAL DEN
Total/NA	Analysis	8015B		1			166669	03/26/13 16:25	MRB	TAL DEN
Total/NA	Analysis	Moisture		1			166576	03/26/13 07:56	AFB	TAL DEN
Soluble	Leach	DI Leach			1.0 g	1.0 mL	166894	03/27/13 14:42	DA	TAL DEN
Soluble	Analysis	9045C		1			166935	03/27/13 18:06	DA	TAL DEN
Soluble	Leach	DI Leach			10.0 g	10.0 mL	167037	03/28/13 10:47	AK	TAL DEN
Soluble	Analysis	9050A		1			167041	03/28/13 11:22	AK	TAL DEN

Client Sample ID: #3

Date Collected: 03/22/13 01:50

Date Received: 03/23/13 08:00

Lab Sample ID: 280-40278-3

Matrix: Solid

Percent Solids: 79.5

Prep Type	Batch Type	Batch Method	Run	Dil Factor	Initial Amount	Final Amount	Batch Number	Prepared or Analyzed	Analyst	Lab
Total/NA	Prep	5030B			5.402 g	5 mL	166752	03/26/13 23:14	AD	TAL DEN
Total/NA	Analysis	8260B		1			166756	03/27/13 04:21	AD	TAL DEN
Total/NA	Prep	5030B			10.01 g	10 mL	166476	03/25/13 11:38	TEM	TAL DEN
Total/NA	Analysis	8015B		1			166674	03/26/13 20:33	TEM	TAL DEN
Total/NA	Prep	3546			32.4 g	1000 uL	166519	03/25/13 15:30	BJ	TAL DEN
Total/NA	Analysis	8015B		5			166669	03/27/13 10:00	MRB	TAL DEN
Total/NA	Analysis	Moisture		1			166576	03/26/13 07:56	AFB	TAL DEN
Soluble	Leach	DI Leach			1.0 g	1.0 mL	166894	03/27/13 14:42	DA	TAL DEN
Soluble	Analysis	9045C		1			166935	03/27/13 18:06	DA	TAL DEN

TestAmerica Denver

Lab Chronicle

Client: Wesco Operating, Inc
Project/Site: Wesco Op. Inc - Linker & Rodnick

TestAmerica Job ID: 280-40278-1

Client Sample ID: #3

Date Collected: 03/22/13 01:50

Date Received: 03/23/13 08:00

Lab Sample ID: 280-40278-3

Matrix: Solid

Prep Type	Batch Type	Batch Method	Run	Dil Factor	Initial Amount	Final Amount	Batch Number	Prepared or Analyzed	Analyst	Lab
Soluble	Leach	DI Leach			10.0 g	10.0 mL	167037	03/28/13 10:47	AK	TAL DEN
Soluble	Analysis	9050A		1			167041	03/28/13 11:22	AK	TAL DEN

Client Sample ID: #4

Date Collected: 03/22/13 02:00

Date Received: 03/23/13 08:00

Lab Sample ID: 280-40278-4

Matrix: Solid

Percent Solids: 81.4

Prep Type	Batch Type	Batch Method	Run	Dil Factor	Initial Amount	Final Amount	Batch Number	Prepared or Analyzed	Analyst	Lab
Total/NA	Prep	5030B			5.411 g	5 mL	166752	03/26/13 23:14	AD	TAL DEN
Total/NA	Analysis	8260B		1			166756	03/27/13 04:40	AD	TAL DEN
Total/NA	Prep	5030B			10.06 g	10 mL	166476	03/25/13 11:38	TEM	TAL DEN
Total/NA	Analysis	8015B		1			166674	03/26/13 21:03	TEM	TAL DEN
Total/NA	Prep	3546			30.7 g	1000 uL	166519	03/25/13 15:30	BJ	TAL DEN
Total/NA	Analysis	8015B		10			166669	03/27/13 10:29	MRB	TAL DEN
Total/NA	Analysis	Moisture		1			166576	03/26/13 07:56	AFB	TAL DEN
Soluble	Leach	DI Leach			1.0 g	1.0 mL	166894	03/27/13 14:42	DA	TAL DEN
Soluble	Analysis	9045C		1			166935	03/27/13 18:06	DA	TAL DEN
Soluble	Leach	DI Leach			10.0 g	10.0 mL	167037	03/28/13 10:47	AK	TAL DEN
Soluble	Analysis	9050A		1			167041	03/28/13 11:22	AK	TAL DEN

Client Sample ID: #5

Date Collected: 03/22/13 02:10

Date Received: 03/23/13 08:00

Lab Sample ID: 280-40278-5

Matrix: Solid

Percent Solids: 91.2

Prep Type	Batch Type	Batch Method	Run	Dil Factor	Initial Amount	Final Amount	Batch Number	Prepared or Analyzed	Analyst	Lab
Total/NA	Prep	5030B			5.609 g	5 mL	166752	03/26/13 23:14	AD	TAL DEN
Total/NA	Analysis	8260B		1			166756	03/27/13 05:00	AD	TAL DEN
Total/NA	Prep	5030B			10.24 g	10 mL	166476	03/25/13 11:38	TEM	TAL DEN
Total/NA	Analysis	8015B		1			166674	03/26/13 21:32	TEM	TAL DEN
Total/NA	Prep	3546			31.4 g	1000 uL	166519	03/25/13 15:30	BJ	TAL DEN
Total/NA	Analysis	8015B		1			166669	03/26/13 17:53	MRB	TAL DEN
Total/NA	Analysis	Moisture		1			166576	03/26/13 07:56	AFB	TAL DEN
Soluble	Leach	DI Leach			1.0 g	1.0 mL	166894	03/27/13 14:42	DA	TAL DEN
Soluble	Analysis	9045C		1			166935	03/27/13 18:06	DA	TAL DEN
Soluble	Leach	DI Leach			10.0 g	10.0 mL	167037	03/28/13 10:47	AK	TAL DEN
Soluble	Analysis	9050A		1			167041	03/28/13 11:22	AK	TAL DEN

Laboratory References:

TAL DEN = TestAmerica Denver, 4955 Yarrow Street, Arvada, CO 80002, TEL (303)736-0100

Login Sample Receipt Checklist

Client: Wesco Operating, Inc

Job Number: 280-40278-1

Login Number: 40278

List Source: TestAmerica Denver

List Number: 1

Creator: Bindel, Aaron M

Question	Answer	Comment
Radioactivity wasn't checked or is \leq background as measured by a survey meter.	True	
The cooler's custody seal, if present, is intact.	True	
Sample custody seals, if present, are intact.	True	
The cooler or samples do not appear to have been compromised or tampered with.	True	
Samples were received on ice.	True	
Cooler Temperature is acceptable.	True	
Cooler Temperature is recorded.	True	
COC is present.	True	
COC is filled out in ink and legible.	True	
COC is filled out with all pertinent information.	True	
Is the Field Sampler's name present on COC?	True	
There are no discrepancies between the containers received and the COC.	True	
Samples are received within Holding Time.	True	
Sample containers have legible labels.	True	
Containers are not broken or leaking.	True	
Sample collection date/times are provided.	True	
Appropriate sample containers are used.	True	
Sample bottles are completely filled.	True	
Sample Preservation Verified.	N/A	
There is sufficient vol. for all requested analyses, incl. any requested MS/MSDs	True	
Containers requiring zero headspace have no headspace or bubble is $<6\text{mm}$ ($1/4"$).	N/A	
Multiphasic samples are not present.	True	
Samples do not require splitting or compositing.	True	
Residual Chlorine Checked.	N/A	

Chain of Custody Record

Sampler ID _____
 Temperature on Receipt -2.0 32313
 Drinking Water? Yes ☐ No ☒

TestAmerica

THE LEADER IN ENVIRONMENTAL TESTING

TAL-4124-280 (0508)

Client WPPSS OP Meeting Project Manager _____ Date 3-22-13 Chain of Custody Number 167991
 Address P.O. Box 1650 Telephone Number (Area Code)/Fax Number 307 577-5329 Lab Number _____
 City Casper State WY Zip Code 82607 Lab Contact _____ Page 1 of 1
 Project Name and Location (State) Windlink Station R.F. - Colorado Carrier/Waybill Number _____

Sample I.D. No. and Description (Containers for each sample may be combined on one line)	Date	Time	Matrix					Containers & Preservatives					Analysis (Attach list if more space is needed)	Special Instructions/ Conditions of Receipt
			Air	Aqueous	Sed.	Soil	Unpres.	H2SO4	HNO3	HCl	NaOH	NaOH		
#1	3-22	130				X	X						EC	
#2		145												
#3		150												
#4		200												
#5		210												

Possible Hazard Identification
☒ Non-Hazard ☐ Flammable ☐ Skin Irritant ☐ Poison B ☐ Unknown ☐ Return To Client ☒ Disposal By Lab ☐ Archive For _____ Months (A fee may be assessed if samples are retained longer than 1 month)
 Turn Around Time Required
☐ 24 Hours ☒ 48 Hours ☐ 7 Days ☐ 14 Days ☐ 21 Days ☐ Other _____
 1. Relinquished By David Wu Date 3-23-13 Time 8:00
 2. Relinquished By _____ Date _____ Time _____
 3. Relinquished By _____ Date _____ Time _____
 Comments _____

TestAmerica

THE LEADER IN ENVIRONMENTAL TESTING

ANALYTICAL REPORT

TestAmerica Laboratories, Inc.

TestAmerica Denver

4955 Yarrow Street

Arvada, CO 80002

Tel: (303)736-0100

TestAmerica Job ID: 280-40278-2

Client Project/Site: Wesco Op. Inc - Linker & Rodnick

For:

Wesco Operating, Inc

120 S. Durbin Street

PO BOX 1650

Casper, Wyoming 82602

Attn: Dave Weinert



Authorized for release by:

3/29/2013 4:01:40 PM

Lisa Uriell

Project Manager II

lisa.uriell@testamericainc.com

Designee for

Corinne Krier

Project Manager I

corinne.krier@testamericainc.com

LINKS

Review your project
results through

Total Access

Have a Question?



Visit us at:

www.testamericainc.com

The test results in this report meet all 2003 NELAC and 2009 TNI requirements for accredited parameters, exceptions are noted in this report. This report may not be reproduced except in full, and with written approval from the laboratory. For questions please contact the Project Manager at the e-mail address or telephone number listed on this page.

This report has been electronically signed and authorized by the signatory. Electronic signature is intended to be the legally binding equivalent of a traditionally handwritten signature.

Results relate only to the items tested and the sample(s) as received by the laboratory.

Table of Contents

Cover Page	1
Table of Contents	2
Case Narrative	3
Definitions	4
Detection Summary	5
Method Summary	6
Sample Summary	7
Client Sample Results	8
QC Sample Results	9
QC Association	10
Chronicle	11
Receipt Checklists	12
Chain of Custody	13

Case Narrative

Client: Wesco Operating, Inc
Project/Site: Wesco Op. Inc - Linker & Rodnick

TestAmerica Job ID: 280-40278-2

Job ID: 280-40278-2

Laboratory: TestAmerica Denver

Narrative

CASE NARRATIVE

Client: Wesco Operating, Inc

Project: Wesco Op. Inc - Linker & Rodnick

Report Number: 280-40278-2

With the exceptions noted as flags or footnotes, standard analytical protocols were followed in the analysis of the samples and no problems were encountered or anomalies observed. In addition all laboratory quality control samples were within established control limits, with any exceptions noted below. Each sample was analyzed to achieve the lowest possible reporting limit within the constraints of the method. In some cases, due to interference or analytes present at high concentrations, samples were diluted. For diluted samples, the reporting limits are adjusted relative to the dilution required.

Calculations are performed before rounding to avoid round-off errors in calculated results.

All holding times were met and proper preservation noted for the methods performed on these samples, unless otherwise detailed in the individual sections below.

RECEIPT

The samples were received on 03/23/2013; the samples arrived in good condition, properly preserved and on ice. The temperature of the coolers at receipt was -2.0°C.

The SAR analysis can be found in this report (280-40278-2.) All additional analyses have been reported under a separate cover (280-40278-1).

SODIUM ABSORPTION RATIO

Samples #1 (280-40278-1), #2 (280-40278-2), #3 (280-40278-3), #4 (280-40278-4) and #5 (280-40278-5) were analyzed for Sodium Absorption Ratio in accordance with USDA Handbook 60 - 20B. The samples were prepared and analyzed on 03/28/2013.

No difficulties were encountered during the SAR analyses.

All quality control parameters were within the acceptance limits.

Definitions/Glossary

Client: Wesco Operating, Inc
Project/Site: Wesco Op. Inc - Linker & Rodnick

TestAmerica Job ID: 280-40278-2

Glossary

Abbreviation	These commonly used abbreviations may or may not be present in this report.
□	Listed under the "D" column to designate that the result is reported on a dry weight basis
%R	Percent Recovery
CNF	Contains no Free Liquid
DER	Duplicate error ratio (normalized absolute difference)
DL, RA, RE, IN	Indicates a Dilution, Re-analysis, Re-extraction, or additional Initial metals/anion analysis of the sample
DLC	Decision level concentration
MDA	Minimum detectable activity
EDL	Estimated Detection Limit
MDC	Minimum detectable concentration
MDL	Method Detection Limit
ML	Minimum Level (Dioxin)
ND	Not detected at the reporting limit (or MDL or EDL if shown)
PQL	Practical Quantitation Limit
QC	Quality Control
RER	Relative error ratio
RL	Reporting Limit or Requested Limit (Radiochemistry)
RPD	Relative Percent Difference, a measure of the relative difference between two points
TEF	Toxicity Equivalent Factor (Dioxin)
TEQ	Toxicity Equivalent Quotient (Dioxin)

Detection Summary

Client: Wesco Operating, Inc
Project/Site: Wesco Op. Inc - Linker & Rodnick

TestAmerica Job ID: 280-40278-2

Client Sample ID: #1

Lab Sample ID: 280-40278-1

Analyte	Result	Qualifier	RL	RL	Unit	Dil Fac	D	Method	Prep Type
Sodium Adsorption Ratio	7.7		1.2	1.2	No Unit	10		20B	Soluble
Sodium	150000		10000	10000	ug/Kg	10		20B	Soluble
Calcium	24000		2000	2000	ug/Kg	10		20B	Soluble
Magnesium	3700		2000	2000	ug/Kg	10		20B	Soluble
Exchangeable Sodium Percentage	9.2		0.50	0.50	No Unit	10		20B	Soluble

Client Sample ID: #2

Lab Sample ID: 280-40278-2

Analyte	Result	Qualifier	RL	RL	Unit	Dil Fac	D	Method	Prep Type
Sodium Adsorption Ratio	3.8		1.2	1.2	No Unit	10		20B	Soluble
Sodium	320000		10000	10000	ug/Kg	10		20B	Soluble
Calcium	410000		2000	2000	ug/Kg	10		20B	Soluble
Magnesium	83000		2000	2000	ug/Kg	10		20B	Soluble
Exchangeable Sodium Percentage	4.1		0.50	0.50	No Unit	10		20B	Soluble

Client Sample ID: #3

Lab Sample ID: 280-40278-3

Analyte	Result	Qualifier	RL	RL	Unit	Dil Fac	D	Method	Prep Type
Sodium Adsorption Ratio	13		1.2	1.2	No Unit	10		20B	Soluble
Sodium	230000		10000	10000	ug/Kg	10		20B	Soluble
Calcium	17000		2000	2000	ug/Kg	10		20B	Soluble
Magnesium	3600		2000	2000	ug/Kg	10		20B	Soluble
Exchangeable Sodium Percentage	15		0.50	0.50	No Unit	10		20B	Soluble

Client Sample ID: #4

Lab Sample ID: 280-40278-4

Analyte	Result	Qualifier	RL	RL	Unit	Dil Fac	D	Method	Prep Type
Sodium Adsorption Ratio	4.2		1.2	1.2	No Unit	10		20B	Soluble
Sodium	310000		10000	10000	ug/Kg	10		20B	Soluble
Calcium	350000		2000	2000	ug/Kg	10		20B	Soluble
Magnesium	52000		2000	2000	ug/Kg	10		20B	Soluble
Exchangeable Sodium Percentage	4.6		0.50	0.50	No Unit	10		20B	Soluble

Client Sample ID: #5

Lab Sample ID: 280-40278-5

Analyte	Result	Qualifier	RL	RL	Unit	Dil Fac	D	Method	Prep Type
Sodium Adsorption Ratio	7.3		1.2	1.2	No Unit	10		20B	Soluble
Sodium	130000		10000	10000	ug/Kg	10		20B	Soluble
Calcium	19000		2000	2000	ug/Kg	10		20B	Soluble
Magnesium	3200		2000	2000	ug/Kg	10		20B	Soluble
Exchangeable Sodium Percentage	8.7		0.50	0.50	No Unit	10		20B	Soluble

This Detection Summary does not include radiochemical test results.

TestAmerica Denver

Method Summary

Client: Wesco Operating, Inc
Project/Site: Wesco Op. Inc - Linker & Rodnick

TestAmerica Job ID: 280-40278-2

Method	Method Description	Protocol	Laboratory
20B	Sodium Adsorption Ratio	USDA	TAL DEN

Protocol References:

USDA = "USDA Agriculture Handbook 60, section 20B".

Laboratory References:

TAL DEN = TestAmerica Denver, 4955 Yarrow Street, Arvada, CO 80002, TEL (303)736-0100

Sample Summary

Client: Wesco Operating, Inc
Project/Site: Wesco Op. Inc - Linker & Rodnick

TestAmerica Job ID: 280-40278-2

Lab Sample ID	Client Sample ID	Matrix	Collected	Received
280-40278-1	#1	Solid	03/22/13 01:30	03/23/13 08:00
280-40278-2	#2	Solid	03/22/13 01:45	03/23/13 08:00
280-40278-3	#3	Solid	03/22/13 01:50	03/23/13 08:00
280-40278-4	#4	Solid	03/22/13 02:00	03/23/13 08:00
280-40278-5	#5	Solid	03/22/13 02:10	03/23/13 08:00

Client Sample Results

Client: Wesco Operating, Inc
Project/Site: Wesco Op. Inc - Linker & Rodnick

TestAmerica Job ID: 280-40278-2

Method: 20B - Sodium Adsorption Ratio - Soluble

Client Sample ID: #1

Date Collected: 03/22/13 01:30

Date Received: 03/23/13 08:00

Lab Sample ID: 280-40278-1

Matrix: Solid

Analyte	Result	Qualifier	RL	RL	Unit	D	Prepared	Analyzed	Dil Fac
Sodium Adsorption Ratio	7.7		1.2	1.2	No Unit		03/28/13 14:00	03/28/13 15:54	10
Sodium	150000		10000	10000	ug/Kg		03/28/13 14:00	03/28/13 15:54	10
Calcium	24000		2000	2000	ug/Kg		03/28/13 14:00	03/28/13 15:54	10
Magnesium	3700		2000	2000	ug/Kg		03/28/13 14:00	03/28/13 15:54	10
Exchangeable Sodium Percentage	9.2		0.50	0.50	No Unit		03/28/13 14:00	03/28/13 15:54	10

Client Sample ID: #2

Date Collected: 03/22/13 01:45

Date Received: 03/23/13 08:00

Lab Sample ID: 280-40278-2

Matrix: Solid

Analyte	Result	Qualifier	RL	RL	Unit	D	Prepared	Analyzed	Dil Fac
Sodium Adsorption Ratio	3.8		1.2	1.2	No Unit		03/28/13 14:00	03/28/13 15:59	10
Sodium	320000		10000	10000	ug/Kg		03/28/13 14:00	03/28/13 15:59	10
Calcium	410000		2000	2000	ug/Kg		03/28/13 14:00	03/28/13 15:59	10
Magnesium	83000		2000	2000	ug/Kg		03/28/13 14:00	03/28/13 15:59	10
Exchangeable Sodium Percentage	4.1		0.50	0.50	No Unit		03/28/13 14:00	03/28/13 15:59	10

Client Sample ID: #3

Date Collected: 03/22/13 01:50

Date Received: 03/23/13 08:00

Lab Sample ID: 280-40278-3

Matrix: Solid

Analyte	Result	Qualifier	RL	RL	Unit	D	Prepared	Analyzed	Dil Fac
Sodium Adsorption Ratio	13		1.2	1.2	No Unit		03/28/13 14:00	03/28/13 16:01	10
Sodium	230000		10000	10000	ug/Kg		03/28/13 14:00	03/28/13 16:01	10
Calcium	17000		2000	2000	ug/Kg		03/28/13 14:00	03/28/13 16:01	10
Magnesium	3600		2000	2000	ug/Kg		03/28/13 14:00	03/28/13 16:01	10
Exchangeable Sodium Percentage	15		0.50	0.50	No Unit		03/28/13 14:00	03/28/13 16:01	10

Client Sample ID: #4

Date Collected: 03/22/13 02:00

Date Received: 03/23/13 08:00

Lab Sample ID: 280-40278-4

Matrix: Solid

Analyte	Result	Qualifier	RL	RL	Unit	D	Prepared	Analyzed	Dil Fac
Sodium Adsorption Ratio	4.2		1.2	1.2	No Unit		03/28/13 14:00	03/28/13 16:14	10
Sodium	310000		10000	10000	ug/Kg		03/28/13 14:00	03/28/13 16:14	10
Calcium	350000		2000	2000	ug/Kg		03/28/13 14:00	03/28/13 16:14	10
Magnesium	52000		2000	2000	ug/Kg		03/28/13 14:00	03/28/13 16:14	10
Exchangeable Sodium Percentage	4.6		0.50	0.50	No Unit		03/28/13 14:00	03/28/13 16:14	10

Client Sample ID: #5

Date Collected: 03/22/13 02:10

Date Received: 03/23/13 08:00

Lab Sample ID: 280-40278-5

Matrix: Solid

Analyte	Result	Qualifier	RL	RL	Unit	D	Prepared	Analyzed	Dil Fac
Sodium Adsorption Ratio	7.3		1.2	1.2	No Unit		03/28/13 14:00	03/28/13 16:16	10
Sodium	130000		10000	10000	ug/Kg		03/28/13 14:00	03/28/13 16:16	10
Calcium	19000		2000	2000	ug/Kg		03/28/13 14:00	03/28/13 16:16	10
Magnesium	3200		2000	2000	ug/Kg		03/28/13 14:00	03/28/13 16:16	10
Exchangeable Sodium Percentage	8.7		0.50	0.50	No Unit		03/28/13 14:00	03/28/13 16:16	10

TestAmerica Denver

QC Sample Results

Client: Wesco Operating, Inc
Project/Site: Wesco Op. Inc - Linker & Rodnick

TestAmerica Job ID: 280-40278-2

Method: 20B - Sodium Adsorption Ratio

Lab Sample ID: MB 280-166508/1-A

Matrix: Solid

Analysis Batch: 167212

Client Sample ID: Method Blank

Prep Type: Soluble

Prep Batch: 166508

Analyte	MB MB		RL	RL	Unit	D	Prepared	Analyzed	Dil Fac
	Result	Qualifier							
Sodium Adsorption Ratio	ND		1.2	1.2	No Unit		03/28/13 14:00	03/28/13 15:52	10
Sodium	ND		10000	10000	ug/Kg		03/28/13 14:00	03/28/13 15:52	10
Calcium	ND		2000	2000	ug/Kg		03/28/13 14:00	03/28/13 15:52	10
Magnesium	ND		2000	2000	ug/Kg		03/28/13 14:00	03/28/13 15:52	10
Exchangeable Sodium Percentage	ND		0.50	0.50	No Unit		03/28/13 14:00	03/28/13 15:52	10

QC Association Summary

Client: Wesco Operating, Inc
Project/Site: Wesco Op. Inc - Linker & Rodnick

TestAmerica Job ID: 280-40278-2

Metals

Prep Batch: 166508

Lab Sample ID	Client Sample ID	Prep Type	Matrix	Method	Prep Batch
280-40278-1	#1	Soluble	Solid	20B	
280-40278-2	#2	Soluble	Solid	20B	
280-40278-3	#3	Soluble	Solid	20B	
280-40278-4	#4	Soluble	Solid	20B	
280-40278-5	#5	Soluble	Solid	20B	
MB 280-166508/1-A	Method Blank	Soluble	Solid	20B	

Analysis Batch: 167212

Lab Sample ID	Client Sample ID	Prep Type	Matrix	Method	Prep Batch
280-40278-1	#1	Soluble	Solid	20B	166508
280-40278-2	#2	Soluble	Solid	20B	166508
280-40278-3	#3	Soluble	Solid	20B	166508
280-40278-4	#4	Soluble	Solid	20B	166508
280-40278-5	#5	Soluble	Solid	20B	166508
MB 280-166508/1-A	Method Blank	Soluble	Solid	20B	166508

Lab Chronicle

Client: Wesco Operating, Inc
Project/Site: Wesco Op. Inc - Linker & Rodnick

TestAmerica Job ID: 280-40278-2

Client Sample ID: #1

Date Collected: 03/22/13 01:30

Date Received: 03/23/13 08:00

Lab Sample ID: 280-40278-1

Matrix: Solid

Prep Type	Batch Type	Batch Method	Run	Dil Factor	Initial Amount	Final Amount	Batch Number	Prepared or Analyzed	Analyst	Lab
Soluble	Prep	20B			5 mL	50 mL	166508	03/28/13 14:00	JA	TAL DEN
Soluble	Analysis	20B		10			167212	03/28/13 15:54	HEB	TAL DEN

Client Sample ID: #2

Date Collected: 03/22/13 01:45

Date Received: 03/23/13 08:00

Lab Sample ID: 280-40278-2

Matrix: Solid

Prep Type	Batch Type	Batch Method	Run	Dil Factor	Initial Amount	Final Amount	Batch Number	Prepared or Analyzed	Analyst	Lab
Soluble	Prep	20B			2 mL	20 mL	166508	03/28/13 14:00	JA	TAL DEN
Soluble	Analysis	20B		10			167212	03/28/13 15:59	HEB	TAL DEN

Client Sample ID: #3

Date Collected: 03/22/13 01:50

Date Received: 03/23/13 08:00

Lab Sample ID: 280-40278-3

Matrix: Solid

Prep Type	Batch Type	Batch Method	Run	Dil Factor	Initial Amount	Final Amount	Batch Number	Prepared or Analyzed	Analyst	Lab
Soluble	Prep	20B			5 mL	50 mL	166508	03/28/13 14:00	JA	TAL DEN
Soluble	Analysis	20B		10			167212	03/28/13 16:01	HEB	TAL DEN

Client Sample ID: #4

Date Collected: 03/22/13 02:00

Date Received: 03/23/13 08:00

Lab Sample ID: 280-40278-4

Matrix: Solid

Prep Type	Batch Type	Batch Method	Run	Dil Factor	Initial Amount	Final Amount	Batch Number	Prepared or Analyzed	Analyst	Lab
Soluble	Prep	20B			2 mL	20 mL	166508	03/28/13 14:00	JA	TAL DEN
Soluble	Analysis	20B		10			167212	03/28/13 16:14	HEB	TAL DEN

Client Sample ID: #5

Date Collected: 03/22/13 02:10

Date Received: 03/23/13 08:00

Lab Sample ID: 280-40278-5

Matrix: Solid

Prep Type	Batch Type	Batch Method	Run	Dil Factor	Initial Amount	Final Amount	Batch Number	Prepared or Analyzed	Analyst	Lab
Soluble	Prep	20B			5 mL	50 mL	166508	03/28/13 14:00	JA	TAL DEN
Soluble	Analysis	20B		10			167212	03/28/13 16:16	HEB	TAL DEN

Laboratory References:

TAL DEN = TestAmerica Denver, 4955 Yarrow Street, Arvada, CO 80002, TEL (303)736-0100

TestAmerica Denver

Login Sample Receipt Checklist

Client: Wesco Operating, Inc

Job Number: 280-40278-2

Login Number: 40278

List Source: TestAmerica Denver

List Number: 1

Creator: Bindel, Aaron M

Question	Answer	Comment
Radioactivity wasn't checked or is \leq background as measured by a survey meter.	True	
The cooler's custody seal, if present, is intact.	True	
Sample custody seals, if present, are intact.	True	
The cooler or samples do not appear to have been compromised or tampered with.	True	
Samples were received on ice.	True	
Cooler Temperature is acceptable.	True	
Cooler Temperature is recorded.	True	
COC is present.	True	
COC is filled out in ink and legible.	True	
COC is filled out with all pertinent information.	True	
Is the Field Sampler's name present on COC?	True	
There are no discrepancies between the containers received and the COC.	True	
Samples are received within Holding Time.	True	
Sample containers have legible labels.	True	
Containers are not broken or leaking.	True	
Sample collection date/times are provided.	True	
Appropriate sample containers are used.	True	
Sample bottles are completely filled.	True	
Sample Preservation Verified.	N/A	
There is sufficient vol. for all requested analyses, incl. any requested MS/MSDs	True	
Containers requiring zero headspace have no headspace or bubble is $< 6\text{mm}$ (1/4").	N/A	
Multiphasic samples are not present.	True	
Samples do not require splitting or compositing.	True	
Residual Chlorine Checked.	N/A	

TestAmerica

THE LEADER IN ENVIRONMENTAL TESTING

Sampler ID

Temperature on Receipt

Drinking Water? Yes ☐ No ☒

Chain of Custody Record

TAL-4124-280 (05/08)

Client WPR Inc Project Manager Opportunity Chain of Custody Number 167991

Address Box 1650 Telephone Number (Area Code)/Fax Number 307 577-5329 Date 3-22-13 Lab Number 167991

City Casper State WY Zip Code 82607 Lab Contact WPR Page 1

Project Name and Location (State) Redlink Summit Pit - Colorado Carrier/Waybill Number

Sample I.D. No. and Description (Containers for each sample may be combined on one line)	Date	Time	Matrix					Containers & Preservatives					Analysis (Attach list if more space is needed)	Special Instructions/ Conditions of Receipt
			Air	Aqueous	Sed.	Soil	Unpres.	H2SO4	HNO3	HCl	NaOH	NaOH		
#1	3-22	130				X	X							
#2	3-22	145												
#3	3-22	150												
#4	3-22	200												
#5	3-22	210												

Possible Hazard Identification
☒ Non-Hazard ☐ Flammable ☐ Skin Irritant ☐ Poison B ☐ Unknown

Sample Disposal
☐ Return To Client ☒ Disposal By Lab ☐ Archive For _____ Months

Turn Around Time Required
☐ 24 Hours ☒ 48 Hours ☐ 7 Days ☐ 14 Days ☐ 21 Days ☐ Other _____

1. Relinquished By David Date 3-23-13 Time 8:00

2. Relinquished By David Date 3-23-13 Time 8:00

3. Relinquished By _____ Date _____ Time _____

Comments

TestAmerica

THE LEADER IN ENVIRONMENTAL TESTING

ANALYTICAL REPORT

TestAmerica Laboratories, Inc.

TestAmerica Denver

4955 Yarrow Street

Arvada, CO 80002

Tel: (303)736-0100

TestAmerica Job ID: 280-41310-1

Client Project/Site: Wesco Op. Inc - Linker & Rodnick

For:

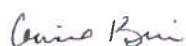
Wesco Operating, Inc

120 S. Durbin Street

PO BOX 1650

Casper, Wyoming 82602

Attn: Dave Weinert



Authorized for release by:

5/2/2013 4:48:56 PM

Corinne Krier

Project Manager I

corinne.krier@testamericainc.com

LINKS

Review your project
results through

Total Access

Have a Question?



Visit us at:

www.testamericainc.com

The test results in this report meet all 2003 NELAC and 2009 TNI requirements for accredited parameters, exceptions are noted in this report. This report may not be reproduced except in full, and with written approval from the laboratory. For questions please contact the Project Manager at the e-mail address or telephone number listed on this page.

This report has been electronically signed and authorized by the signatory. Electronic signature is intended to be the legally binding equivalent of a traditionally handwritten signature.

Results relate only to the items tested and the sample(s) as received by the laboratory.

1

2

3

4

5

6

7

8

9

10

11

12

13

Table of Contents

Cover Page	1
Table of Contents	2
Case Narrative	3
Definitions	5
Detection Summary	6
Method Summary	7
Sample Summary	8
Client Sample Results	9
QC Sample Results	11
QC Association	14
Chronicle	16
Receipt Checklists	17
Chain of Custody	18



Case Narrative

Client: Wesco Operating, Inc
Project/Site: Wesco Op. Inc - Linker & Rodnick

TestAmerica Job ID: 280-41310-1

Job ID: 280-41310-1

Laboratory: TestAmerica Denver

Narrative

CASE NARRATIVE

Client: Wesco Operating, Inc

Project: Wesco Op. Inc - Linker & Rodnick

Report Number: 280-41310-1

With the exceptions noted as flags or footnotes, standard analytical protocols were followed in the analysis of the samples and no problems were encountered or anomalies observed. In addition all laboratory quality control samples were within established control limits, with any exceptions noted below. Each sample was analyzed to achieve the lowest possible reporting limit within the constraints of the method. In some cases, due to interference or analytes present at high concentrations, samples were diluted. For diluted samples, the reporting limits are adjusted relative to the dilution required.

Calculations are performed before rounding to avoid round-off errors in calculated results.

All holding times were met and proper preservation noted for the methods performed on these samples, unless otherwise detailed in the individual sections below.

RECEIPT

The samples were received on 04/23/2013; the samples arrived in good condition, properly preserved and on ice. The temperature of the cooler at receipt was 3.4°C.

GASOLINE RANGE ORGANICS (GRO)

Samples #6 (280-41310-1), #7 (280-41310-2) and #8 (280-41310-3) were analyzed for gasoline range organics (GRO) in accordance with EPA SW-846 Method 8015B - GRO. The samples were analyzed on 04/24/2013 and 04/25/2013.

No difficulties were encountered during the GRO analyses.

All quality control parameters were within the acceptance limits.

DIESEL RANGE ORGANICS

Samples #6 (280-41310-1), #7 (280-41310-2) and #8 (280-41310-3) were analyzed for diesel range organics in accordance with EPA SW-846 Method 8015B - DRO. The samples were prepared on 04/24/2013 and 04/29/2013 and analyzed on 04/25/2013 and 05/01/2013.

A low level of Diesel Range Organics [C10-C28] was detected in the method blank associated with prep batch 280-171822. The value should be considered an estimate, and has been flagged "J". Because the concentration in the method blank was not present at a level greater than one half the reporting limit, corrective action was deemed unnecessary. The associated positive result in the analytical report has been flagged with a "B". Usability of the sample data is not compromised.

No other difficulties were encountered during the DRO analyses.

All other quality control parameters were within the acceptance limits.

PERCENT SOLIDS

Samples #6 (280-41310-1), #7 (280-41310-2) and #8 (280-41310-3) were analyzed for percent solids in accordance with EPA SW846 3550C. The samples were analyzed on 04/24/2013.

Case Narrative

Client: Wesco Operating, Inc
Project/Site: Wesco Op. Inc - Linker & Rodnick

TestAmerica Job ID: 280-41310-1

Job ID: 280-41310-1 (Continued)

Laboratory: TestAmerica Denver (Continued)

No difficulties were encountered during the % solids analyses.

All quality control parameters were within the acceptance limits.

1

2

3

4

5

6

7

8

9

10

11

12

13

Definitions/Glossary

Client: Wesco Operating, Inc
Project/Site: Wesco Op. Inc - Linker & Rodnick

TestAmerica Job ID: 280-41310-1

Qualifiers

GC Semi VOA

Qualifier	Qualifier Description
J	Result is less than the RL but greater than or equal to the MDL and the concentration is an approximate value.
B	Compound was found in the blank and sample.

Glossary

Abbreviation	These commonly used abbreviations may or may not be present in this report.
□	Listed under the "D" column to designate that the result is reported on a dry weight basis
%R	Percent Recovery
CNF	Contains no Free Liquid
DER	Duplicate error ratio (normalized absolute difference)
DL, RA, RE, IN	Indicates a Dilution, Re-analysis, Re-extraction, or additional Initial metals/anion analysis of the sample
DLC	Decision level concentration
MDA	Minimum detectable activity
EDL	Estimated Detection Limit
MDC	Minimum detectable concentration
MDL	Method Detection Limit
ML	Minimum Level (Dioxin)
ND	Not detected at the reporting limit (or MDL or EDL if shown)
PQL	Practical Quantitation Limit
QC	Quality Control
RER	Relative error ratio
RL	Reporting Limit or Requested Limit (Radiochemistry)
RPD	Relative Percent Difference, a measure of the relative difference between two points
TEF	Toxicity Equivalent Factor (Dioxin)
TEQ	Toxicity Equivalent Quotient (Dioxin)

Detection Summary

Client: Wesco Operating, Inc
Project/Site: Wesco Op. Inc - Linker & Rodnick

TestAmerica Job ID: 280-41310-1

Client Sample ID: #6

Lab Sample ID: 280-41310-1

Analyte	Result	Qualifier	RL	MDL	Unit	Dil	Fac	D	Method	Prep Type
Diesel Range Organics [C10-C28]	3.0	J	4.1	0.70	mg/Kg	1		☼	8015B	Total/NA

Client Sample ID: #7

Lab Sample ID: 280-41310-2

Analyte	Result	Qualifier	RL	MDL	Unit	Dil	Fac	D	Method	Prep Type
Diesel Range Organics [C10-C28]	5.1		4.0	0.69	mg/Kg	1		☼	8015B	Total/NA

Client Sample ID: #8

Lab Sample ID: 280-41310-3

Analyte	Result	Qualifier	RL	MDL	Unit	Dil	Fac	D	Method	Prep Type
Diesel Range Organics [C10-C28] - RE	5.0	B	4.4	0.74	mg/Kg	1		☼	8015B	Total/NA

This Detection Summary does not include radiochemical test results.

TestAmerica Denver

Method Summary

Client: Wesco Operating, Inc
Project/Site: Wesco Op. Inc - Linker & Rodnick

TestAmerica Job ID: 280-41310-1

Method	Method Description	Protocol	Laboratory
8015B	Gasoline Range Organics - (GC)	SW846	TAL DEN
8015B	Diesel Range Organics (DRO) (GC)	SW846	TAL DEN
Moisture	Percent Moisture	EPA	TAL DEN

Protocol References:

EPA = US Environmental Protection Agency

SW846 = "Test Methods For Evaluating Solid Waste, Physical/Chemical Methods", Third Edition, November 1986 And Its Updates.

Laboratory References:

TAL DEN = TestAmerica Denver, 4955 Yarrow Street, Arvada, CO 80002, TEL (303)736-0100

Sample Summary

Client: Wesco Operating, Inc
Project/Site: Wesco Op. Inc - Linker & Rodnick

TestAmerica Job ID: 280-41310-1

Lab Sample ID	Client Sample ID	Matrix	Collected	Received
280-41310-1	#6	Solid	04/19/13 11:00	04/23/13 13:00
280-41310-2	#7	Solid	04/19/13 11:10	04/23/13 13:00
280-41310-3	#8	Solid	04/19/13 11:20	04/23/13 13:00

1

2

3

4

5

6

7

8

9

10

11

12

13

Client Sample Results

Client: Wesco Operating, Inc
Project/Site: Wesco Op. Inc - Linker & Rodnick

TestAmerica Job ID: 280-41310-1

Method: 8015B - Gasoline Range Organics - (GC)

Client Sample ID: #6

Date Collected: 04/19/13 11:00

Date Received: 04/23/13 13:00

Lab Sample ID: 280-41310-1

Matrix: Solid

Percent Solids: 94.3

Analyte	Result	Qualifier	RL	MDL	Unit	D	Prepared	Analyzed	Dil Fac
Gasoline Range Organics (GRO) -C6-C10	ND		1.2	0.33	mg/Kg	☼	04/24/13 14:10	04/24/13 22:07	1
Surrogate	%Recovery	Qualifier	Limits				Prepared	Analyzed	Dil Fac
a,a,a-Trifluorotoluene	98		77 - 123				04/24/13 14:10	04/24/13 22:07	1

Client Sample ID: #7

Date Collected: 04/19/13 11:10

Date Received: 04/23/13 13:00

Lab Sample ID: 280-41310-2

Matrix: Solid

Percent Solids: 89.8

Analyte	Result	Qualifier	RL	MDL	Unit	D	Prepared	Analyzed	Dil Fac
Gasoline Range Organics (GRO) -C6-C10	ND		1.3	0.36	mg/Kg	☼	04/24/13 14:10	04/24/13 23:36	1
Surrogate	%Recovery	Qualifier	Limits				Prepared	Analyzed	Dil Fac
a,a,a-Trifluorotoluene	93		77 - 123				04/24/13 14:10	04/24/13 23:36	1

Client Sample ID: #8

Date Collected: 04/19/13 11:20

Date Received: 04/23/13 13:00

Lab Sample ID: 280-41310-3

Matrix: Solid

Percent Solids: 84.3

Analyte	Result	Qualifier	RL	MDL	Unit	D	Prepared	Analyzed	Dil Fac
Gasoline Range Organics (GRO) -C6-C10	ND		1.4	0.38	mg/Kg	☼	04/24/13 14:10	04/25/13 00:05	1
Surrogate	%Recovery	Qualifier	Limits				Prepared	Analyzed	Dil Fac
a,a,a-Trifluorotoluene	92		77 - 123				04/24/13 14:10	04/25/13 00:05	1

Method: 8015B - Diesel Range Organics (DRO) (GC)

Client Sample ID: #6

Date Collected: 04/19/13 11:00

Date Received: 04/23/13 13:00

Lab Sample ID: 280-41310-1

Matrix: Solid

Percent Solids: 94.3

Analyte	Result	Qualifier	RL	MDL	Unit	D	Prepared	Analyzed	Dil Fac
Diesel Range Organics [C10-C28]	3.0	J	4.1	0.70	mg/Kg	☼	04/24/13 20:10	04/25/13 20:18	1
Surrogate	%Recovery	Qualifier	Limits				Prepared	Analyzed	Dil Fac
o-Terphenyl	87		49 - 115				04/24/13 20:10	04/25/13 20:18	1

Client Sample ID: #7

Date Collected: 04/19/13 11:10

Date Received: 04/23/13 13:00

Lab Sample ID: 280-41310-2

Matrix: Solid

Percent Solids: 89.8

Analyte	Result	Qualifier	RL	MDL	Unit	D	Prepared	Analyzed	Dil Fac
Diesel Range Organics [C10-C28]	5.1		4.0	0.69	mg/Kg	☼	04/24/13 20:10	04/25/13 20:47	1
Surrogate	%Recovery	Qualifier	Limits				Prepared	Analyzed	Dil Fac
o-Terphenyl	84		49 - 115				04/24/13 20:10	04/25/13 20:47	1

TestAmerica Denver

Client Sample Results

Client: Wesco Operating, Inc
Project/Site: Wesco Op. Inc - Linker & Rodnick

TestAmerica Job ID: 280-41310-1

Method: 8015B - Diesel Range Organics (DRO) (GC) - RE

Client Sample ID: #8

Date Collected: 04/19/13 11:20

Date Received: 04/23/13 13:00

Lab Sample ID: 280-41310-3

Matrix: Solid

Percent Solids: 84.3

Analyte	Result	Qualifier	RL	MDL	Unit	D	Prepared	Analyzed	Dil Fac
Diesel Range Organics [C10-C28]	5.0	B	4.4	0.74	mg/Kg	☆	04/29/13 17:50	05/01/13 21:34	1
Surrogate	%Recovery	Qualifier	Limits				Prepared	Analyzed	Dil Fac
o-Terphenyl	72		49 - 115				04/29/13 17:50	05/01/13 21:34	1

General Chemistry

Client Sample ID: #6

Date Collected: 04/19/13 11:00

Date Received: 04/23/13 13:00

Lab Sample ID: 280-41310-1

Matrix: Solid

Analyte	Result	Qualifier	RL	RL	Unit	D	Prepared	Analyzed	Dil Fac
Percent Moisture	5.7		0.10	0.10	%			04/24/13 14:01	1

Client Sample ID: #7

Date Collected: 04/19/13 11:10

Date Received: 04/23/13 13:00

Lab Sample ID: 280-41310-2

Matrix: Solid

Analyte	Result	Qualifier	RL	RL	Unit	D	Prepared	Analyzed	Dil Fac
Percent Moisture	10		0.10	0.10	%			04/24/13 14:01	1

Client Sample ID: #8

Date Collected: 04/19/13 11:20

Date Received: 04/23/13 13:00

Lab Sample ID: 280-41310-3

Matrix: Solid

Analyte	Result	Qualifier	RL	RL	Unit	D	Prepared	Analyzed	Dil Fac
Percent Moisture	16		0.10	0.10	%			04/24/13 14:01	1

TestAmerica Denver

QC Sample Results

Client: Wesco Operating, Inc
Project/Site: Wesco Op. Inc - Linker & Rodnick

TestAmerica Job ID: 280-41310-1

Method: 8015B - Gasoline Range Organics - (GC)

Lab Sample ID: MB 280-171112/1-A

Matrix: Solid

Analysis Batch: 171123

Client Sample ID: Method Blank

Prep Type: Total/NA

Prep Batch: 171112

Analyte	MB Result	MB Qualifier	RL	MDL	Unit	D	Prepared	Analyzed	Dil Fac
Gasoline Range Organics (GRO)	ND		1.2	0.32	mg/Kg		04/24/13 14:10	04/24/13 17:41	1
-C6-C10									
Surrogate	MB %Recovery	MB Qualifier	Limits				Prepared	Analyzed	Dil Fac
a,a,a-Trifluorotoluene	105		77 - 123				04/24/13 14:10	04/24/13 17:41	1

Lab Sample ID: LCS 280-171112/2-A

Matrix: Solid

Analysis Batch: 171123

Client Sample ID: Lab Control Sample

Prep Type: Total/NA

Prep Batch: 171112

Analyte	Spike Added	LCS Result	LCS Qualifier	Unit	D	%Rec	%Rec. Limits		
Gasoline Range Organics (GRO)	5.39	6.94		mg/Kg		129	85 - 153		
-C6-C10									
Surrogate	LCS %Recovery	LCS Qualifier	Limits						
a,a,a-Trifluorotoluene	105		77 - 123						

Lab Sample ID: LCSD 280-171112/3-A

Matrix: Solid

Analysis Batch: 171123

Client Sample ID: Lab Control Sample Dup

Prep Type: Total/NA

Prep Batch: 171112

Analyte	Spike Added	LCSD Result	LCSD Qualifier	Unit	D	%Rec	%Rec. Limits	RPD	RPD Limit
Gasoline Range Organics (GRO)	5.48	6.98		mg/Kg		127	85 - 153	1	30
-C6-C10									
Surrogate	LCSD %Recovery	LCSD Qualifier	Limits						
a,a,a-Trifluorotoluene	105		77 - 123						

Lab Sample ID: 280-41310-1 MS

Matrix: Solid

Analysis Batch: 171123

Client Sample ID: #6

Prep Type: Total/NA

Prep Batch: 171112

Analyte	Sample Result	Sample Qualifier	Spike Added	MS Result	MS Qualifier	Unit	D	%Rec	%Rec. Limits		
Gasoline Range Organics (GRO)	ND		5.70	6.76		mg/Kg	☐	119	85 - 153		
-C6-C10											
Surrogate	MS %Recovery	MS Qualifier	Limits								
a,a,a-Trifluorotoluene	97		77 - 123								

Lab Sample ID: 280-41310-1 MSD

Matrix: Solid

Analysis Batch: 171123

Client Sample ID: #6

Prep Type: Total/NA

Prep Batch: 171112

Analyte	Sample Result	Sample Qualifier	Spike Added	MSD Result	MSD Qualifier	Unit	D	%Rec	%Rec. Limits	RPD	RPD Limit
Gasoline Range Organics (GRO)	ND		5.82	6.90		mg/Kg	☐	118	85 - 153	2	30
-C6-C10											

TestAmerica Denver

QC Sample Results

Client: Wesco Operating, Inc
Project/Site: Wesco Op. Inc - Linker & Rodnick

TestAmerica Job ID: 280-41310-1

Method: 8015B - Gasoline Range Organics - (GC) (Continued)

Lab Sample ID: 280-41310-1 MSD

Matrix: Solid

Analysis Batch: 171123

Client Sample ID: #6

Prep Type: Total/NA

Prep Batch: 171112

Surrogate	MSD %Recovery	MSD Qualifier	Limits
a,a,a-Trifluorotoluene	96		77 - 123

Method: 8015B - Diesel Range Organics (DRO) (GC)

Lab Sample ID: MB 280-171184/1-A

Matrix: Solid

Analysis Batch: 171336

Client Sample ID: Method Blank

Prep Type: Total/NA

Prep Batch: 171184

Analyte	MB Result	MB Qualifier	RL	MDL	Unit	D	Prepared	Analyzed	Dil Fac
Diesel Range Organics [C10-C28]	ND		3.7	0.63	mg/Kg		04/24/13 20:10	04/25/13 17:25	1
Surrogate	MB %Recovery	MB Qualifier	Limits				Prepared	Analyzed	Dil Fac
o-Terphenyl	92		49 - 115				04/24/13 20:10	04/25/13 17:25	1

Lab Sample ID: LCS 280-171184/2-A

Matrix: Solid

Analysis Batch: 171336

Client Sample ID: Lab Control Sample

Prep Type: Total/NA

Prep Batch: 171184

Analyte	Spike Added	LCS Result	LCS Qualifier	Unit	D	%Rec	%Rec. Limits
Diesel Range Organics [C10-C28]	64.8	67.9		mg/Kg		105	53 - 115
Surrogate	LCS %Recovery	LCS Qualifier	Limits				
o-Terphenyl	97		49 - 115				

Lab Sample ID: MB 280-171822/1-A

Matrix: Solid

Analysis Batch: 172170

Client Sample ID: Method Blank

Prep Type: Total/NA

Prep Batch: 171822

Analyte	MB Result	MB Qualifier	RL	MDL	Unit	D	Prepared	Analyzed	Dil Fac
Diesel Range Organics [C10-C28]	1.12	J	3.9	0.66	mg/Kg		04/29/13 17:50	05/01/13 20:37	1
Surrogate	MB %Recovery	MB Qualifier	Limits				Prepared	Analyzed	Dil Fac
o-Terphenyl	90		49 - 115				04/29/13 17:50	05/01/13 20:37	1

Lab Sample ID: LCS 280-171822/2-A

Matrix: Solid

Analysis Batch: 172170

Client Sample ID: Lab Control Sample

Prep Type: Total/NA

Prep Batch: 171822

Analyte	Spike Added	LCS Result	LCS Qualifier	Unit	D	%Rec	%Rec. Limits
Diesel Range Organics [C10-C28]	64.8	61.1		mg/Kg		94	53 - 115
Surrogate	LCS %Recovery	LCS Qualifier	Limits				
o-Terphenyl	92		49 - 115				

TestAmerica Denver

QC Sample Results

Client: Wesco Operating, Inc
Project/Site: Wesco Op. Inc - Linker & Rodnick

TestAmerica Job ID: 280-41310-1

Method: 8015B - Diesel Range Organics (DRO) (GC) (Continued)

Lab Sample ID: 280-41310-3 MS

Matrix: Solid

Analysis Batch: 172170

Client Sample ID: #8

Prep Type: Total/NA

Prep Batch: 171822

Analyte	Sample Result	Sample Qualifier	Spike Added	MS Result	MS Qualifier	Unit	D	%Rec	%Rec. Limits
Diesel Range Organics [C10-C28]	5.0	B	77.6	66.9		mg/Kg	☼	80	56 - 115
Surrogate	MS %Recovery	MS Qualifier	MS Limits						
o-Terphenyl	86		49 - 115						

Lab Sample ID: 280-41310-3 MSD

Matrix: Solid

Analysis Batch: 172170

Client Sample ID: #8

Prep Type: Total/NA

Prep Batch: 171822

Analyte	Sample Result	Sample Qualifier	Spike Added	MSD Result	MSD Qualifier	Unit	D	%Rec	%Rec. Limits	RPD	RPD Limit
Diesel Range Organics [C10-C28]	5.0	B	76.6	60.4		mg/Kg	☼	72	56 - 115	10	23
Surrogate	MSD %Recovery	MSD Qualifier	MSD Limits								
o-Terphenyl	81		49 - 115								

Method: Moisture - Percent Moisture

Lab Sample ID: 280-41310-1 DU

Matrix: Solid

Analysis Batch: 171109

Client Sample ID: #6

Prep Type: Total/NA

Analyte	Sample Result	Sample Qualifier	DU Result	DU Qualifier	Unit	D	RPD	RPD Limit
Percent Moisture	5.7		6.4		%		12	20

TestAmerica Denver

QC Association Summary

Client: Wesco Operating, Inc
Project/Site: Wesco Op. Inc - Linker & Rodnick

TestAmerica Job ID: 280-41310-1

GC VOA

Prep Batch: 171112

Lab Sample ID	Client Sample ID	Prep Type	Matrix	Method	Prep Batch
280-41310-1	#6	Total/NA	Solid	5030B	
280-41310-1 MS	#6	Total/NA	Solid	5030B	
280-41310-1 MSD	#6	Total/NA	Solid	5030B	
280-41310-2	#7	Total/NA	Solid	5030B	
280-41310-3	#8	Total/NA	Solid	5030B	
LCS 280-171112/2-A	Lab Control Sample	Total/NA	Solid	5030B	
LCSD 280-171112/3-A	Lab Control Sample Dup	Total/NA	Solid	5030B	
MB 280-171112/1-A	Method Blank	Total/NA	Solid	5030B	

Analysis Batch: 171123

Lab Sample ID	Client Sample ID	Prep Type	Matrix	Method	Prep Batch
280-41310-1	#6	Total/NA	Solid	8015B	171112
280-41310-1 MS	#6	Total/NA	Solid	8015B	171112
280-41310-1 MSD	#6	Total/NA	Solid	8015B	171112
280-41310-2	#7	Total/NA	Solid	8015B	171112
280-41310-3	#8	Total/NA	Solid	8015B	171112
LCS 280-171112/2-A	Lab Control Sample	Total/NA	Solid	8015B	171112
LCSD 280-171112/3-A	Lab Control Sample Dup	Total/NA	Solid	8015B	171112
MB 280-171112/1-A	Method Blank	Total/NA	Solid	8015B	171112

GC Semi VOA

Prep Batch: 171184

Lab Sample ID	Client Sample ID	Prep Type	Matrix	Method	Prep Batch
280-41310-1	#6	Total/NA	Solid	3546	
280-41310-2	#7	Total/NA	Solid	3546	
LCS 280-171184/2-A	Lab Control Sample	Total/NA	Solid	3546	
MB 280-171184/1-A	Method Blank	Total/NA	Solid	3546	

Analysis Batch: 171336

Lab Sample ID	Client Sample ID	Prep Type	Matrix	Method	Prep Batch
280-41310-1	#6	Total/NA	Solid	8015B	171184
280-41310-2	#7	Total/NA	Solid	8015B	171184
LCS 280-171184/2-A	Lab Control Sample	Total/NA	Solid	8015B	171184
MB 280-171184/1-A	Method Blank	Total/NA	Solid	8015B	171184

Prep Batch: 171822

Lab Sample ID	Client Sample ID	Prep Type	Matrix	Method	Prep Batch
280-41310-3 - RE	#8	Total/NA	Solid	3546	
280-41310-3 MS	#8	Total/NA	Solid	3546	
280-41310-3 MSD	#8	Total/NA	Solid	3546	
LCS 280-171822/2-A	Lab Control Sample	Total/NA	Solid	3546	
MB 280-171822/1-A	Method Blank	Total/NA	Solid	3546	

Analysis Batch: 172170

Lab Sample ID	Client Sample ID	Prep Type	Matrix	Method	Prep Batch
280-41310-3 - RE	#8	Total/NA	Solid	8015B	171822
280-41310-3 MS	#8	Total/NA	Solid	8015B	171822
280-41310-3 MSD	#8	Total/NA	Solid	8015B	171822
LCS 280-171822/2-A	Lab Control Sample	Total/NA	Solid	8015B	171822

TestAmerica Denver

QC Association Summary

Client: Wesco Operating, Inc
Project/Site: Wesco Op. Inc - Linker & Rodnick

TestAmerica Job ID: 280-41310-1

GC Semi VOA (Continued)

Analysis Batch: 172170 (Continued)

Lab Sample ID	Client Sample ID	Prep Type	Matrix	Method	Prep Batch
MB 280-171822/1-A	Method Blank	Total/NA	Solid	8015B	171822

General Chemistry

Analysis Batch: 171109

Lab Sample ID	Client Sample ID	Prep Type	Matrix	Method	Prep Batch
280-41310-1	#6	Total/NA	Solid	Moisture	
280-41310-1 DU	#6	Total/NA	Solid	Moisture	
280-41310-2	#7	Total/NA	Solid	Moisture	
280-41310-3	#8	Total/NA	Solid	Moisture	

Lab Chronicle

Client: Wesco Operating, Inc
Project/Site: Wesco Op. Inc - Linker & Rodnick

TestAmerica Job ID: 280-41310-1

Client Sample ID: #6

Date Collected: 04/19/13 11:00

Date Received: 04/23/13 13:00

Lab Sample ID: 280-41310-1

Matrix: Solid

Percent Solids: 94.3

Prep Type	Batch Type	Batch Method	Run	Dil Factor	Initial Amount	Final Amount	Batch Number	Prepared or Analyzed	Analyst	Lab
Total/NA	Prep	5030B			10.32 g	10 mL	171112	04/24/13 14:10	TEM	TAL DEN
Total/NA	Analysis	8015B		1			171123	04/24/13 22:07	TEM	TAL DEN
Total/NA	Prep	3546			31.0 g	1000 uL	171184	04/24/13 20:10	SPF	TAL DEN
Total/NA	Analysis	8015B		1			171336	04/25/13 20:18	MRB	TAL DEN
Total/NA	Analysis	Moisture		1			171109	04/24/13 14:01	AFB	TAL DEN

Client Sample ID: #7

Date Collected: 04/19/13 11:10

Date Received: 04/23/13 13:00

Lab Sample ID: 280-41310-2

Matrix: Solid

Percent Solids: 89.8

Prep Type	Batch Type	Batch Method	Run	Dil Factor	Initial Amount	Final Amount	Batch Number	Prepared or Analyzed	Analyst	Lab
Total/NA	Prep	5030B			10.17 g	10 mL	171112	04/24/13 14:10	TEM	TAL DEN
Total/NA	Analysis	8015B		1			171123	04/24/13 23:36	TEM	TAL DEN
Total/NA	Prep	3546			33.0 g	1000 uL	171184	04/24/13 20:10	SPF	TAL DEN
Total/NA	Analysis	8015B		1			171336	04/25/13 20:47	MRB	TAL DEN
Total/NA	Analysis	Moisture		1			171109	04/24/13 14:01	AFB	TAL DEN

Client Sample ID: #8

Date Collected: 04/19/13 11:20

Date Received: 04/23/13 13:00

Lab Sample ID: 280-41310-3

Matrix: Solid

Percent Solids: 84.3

Prep Type	Batch Type	Batch Method	Run	Dil Factor	Initial Amount	Final Amount	Batch Number	Prepared or Analyzed	Analyst	Lab
Total/NA	Prep	5030B			10.27 g	10 mL	171112	04/24/13 14:10	TEM	TAL DEN
Total/NA	Analysis	8015B		1			171123	04/25/13 00:05	TEM	TAL DEN
Total/NA	Prep	3546	RE		32.6 g	1000 uL	171822	04/29/13 17:50	SPF	TAL DEN
Total/NA	Analysis	8015B	RE	1			172170	05/01/13 21:34	MRB	TAL DEN
Total/NA	Analysis	Moisture		1			171109	04/24/13 14:01	AFB	TAL DEN

Laboratory References:

TAL DEN = TestAmerica Denver, 4955 Yarrow Street, Arvada, CO 80002, TEL (303)736-0100

TestAmerica Denver

Login Sample Receipt Checklist

Client: Wesco Operating, Inc

Job Number: 280-41310-1

Login Number: 41310

List Source: TestAmerica Denver

List Number: 1

Creator: Wheeler, Virginia L

Question	Answer	Comment
Radioactivity wasn't checked or is \leq background as measured by a survey meter.	True	
The cooler's custody seal, if present, is intact.	True	
Sample custody seals, if present, are intact.	True	
The cooler or samples do not appear to have been compromised or tampered with.	True	
Samples were received on ice.	True	
Cooler Temperature is acceptable.	True	
Cooler Temperature is recorded.	True	
COC is present.	True	
COC is filled out in ink and legible.	True	
COC is filled out with all pertinent information.	True	
Is the Field Sampler's name present on COC?	True	
There are no discrepancies between the containers received and the COC.	True	
Samples are received within Holding Time.	True	
Sample containers have legible labels.	True	
Containers are not broken or leaking.	True	
Sample collection date/times are provided.	True	
Appropriate sample containers are used.	True	
Sample bottles are completely filled.	True	
Sample Preservation Verified.	N/A	
There is sufficient vol. for all requested analyses, incl. any requested MS/MSDs	True	
Containers requiring zero headspace have no headspace or bubble is $<6\text{mm}$ (1/4").	N/A	
Multiphasic samples are not present.	True	
Samples do not require splitting or compositing.	True	
Residual Chlorine Checked.	N/A	

TestAmerica

THE LEADER IN ENVIRONMENTAL TESTING

Temperature on Receipt 2.1
Drinking Water? Yes ☐ No ☒

THE LEADER IN ENVIRONMENTAL TESTING

Client	Project Manager	Date	Chain of Custody Number
Address	Telephone Number (Area Code)/Fax Number	Lab Number	Page <u>1</u> of <u>7</u>
WPSO Operating, Inc.	WPSO		
PO Box 1650	327 577-5329		

Special Instructions/
Conditions of Receipt[illegible]

Possible Hazard Identification	<input checked="" type="checkbox"/> Non-Hazard <input type="checkbox"/> Flammable <input type="checkbox"/> Skin Irritant <input type="checkbox"/> Poison B <input type="checkbox"/> Unknown	Sample Disposal <input type="checkbox"/> Return To Client <input checked="" type="checkbox"/> Disposal By Lab <input type="checkbox"/> Archive For _____ Months	(A fee may be assessed if samples are retained longer than 1 month)
QC Requirements (Specify)			

	48 Hours	72 Hours	7 Days	14 Days	21 Days	Cancel	
1. Relinquished By					<input checked="" type="checkbox"/>		
2. Relinquished By							
3. Relinquished By							

	Date	Time
1. Received By	4-22-13	1:00
2. Received By		
3. Received By		

Comments

DISTRIBUTION: WHITE - Returned to Client with Report; CANARY - Stays with the Sample; PINK - Field Copy