

# Synergy Resources

Well Name: **SRC Vista 11-2NHZ**

Surface Location: SRC Vista (N/S) Pad Sec.2-T4N-R68W  
North American Datum 1983 , US State Plane 1983 , Colorado Northern Zone

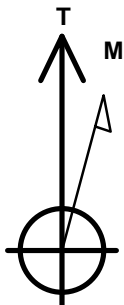
Ground Elevation: 5000.0

+N/-S	+E/-W	Northing	Easting	Latitude	Longitude	Slot
0.0	0.0	1367716.74	3145254.51	40.341612	-104.978905	

Original Well Elev WELL @ 5013.0ft (Original Well Elev)

## WELLBORE TARGET DETAILS

Name	TVD	+N/-S	+E/-W	Shape
SHL 2223'FSL, 254'FWL	1.0	0.0	0.0	Point
BHL 460'FNL, 480'FWL	6900.0	2294.8	35.1	Point
Turn Pt. (11-2NHZ)	6900.0	420.8	224.4	Point



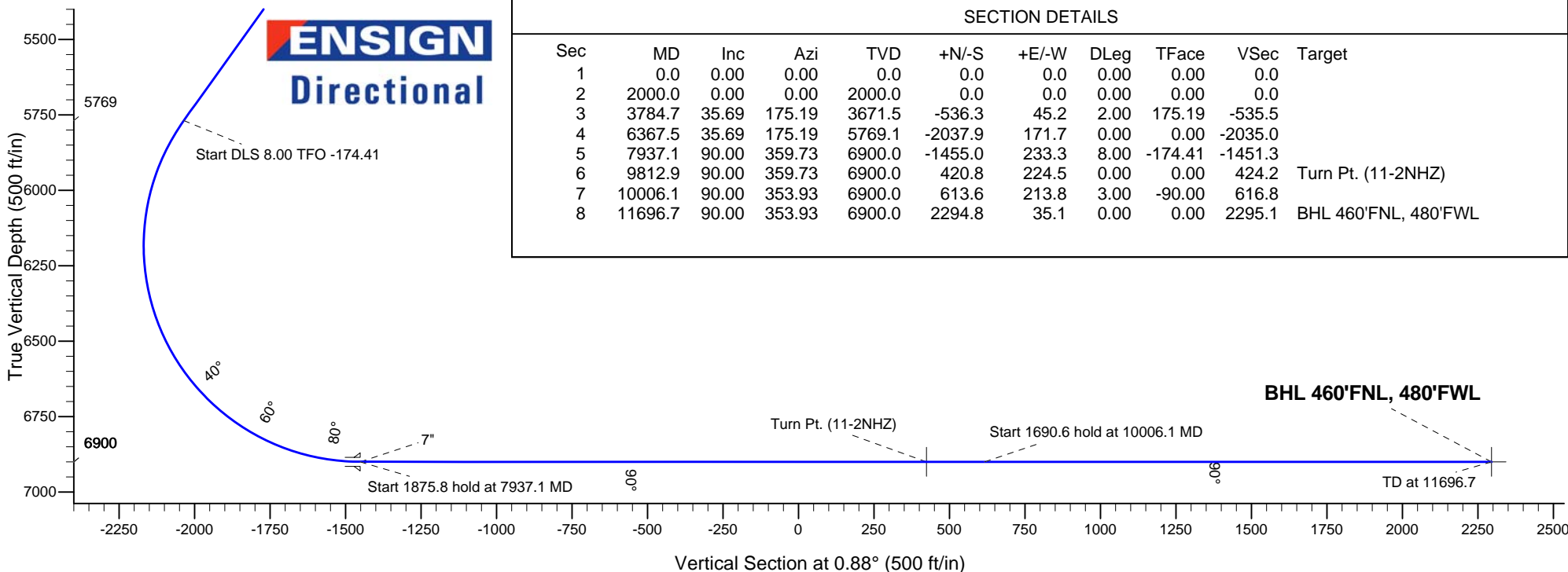
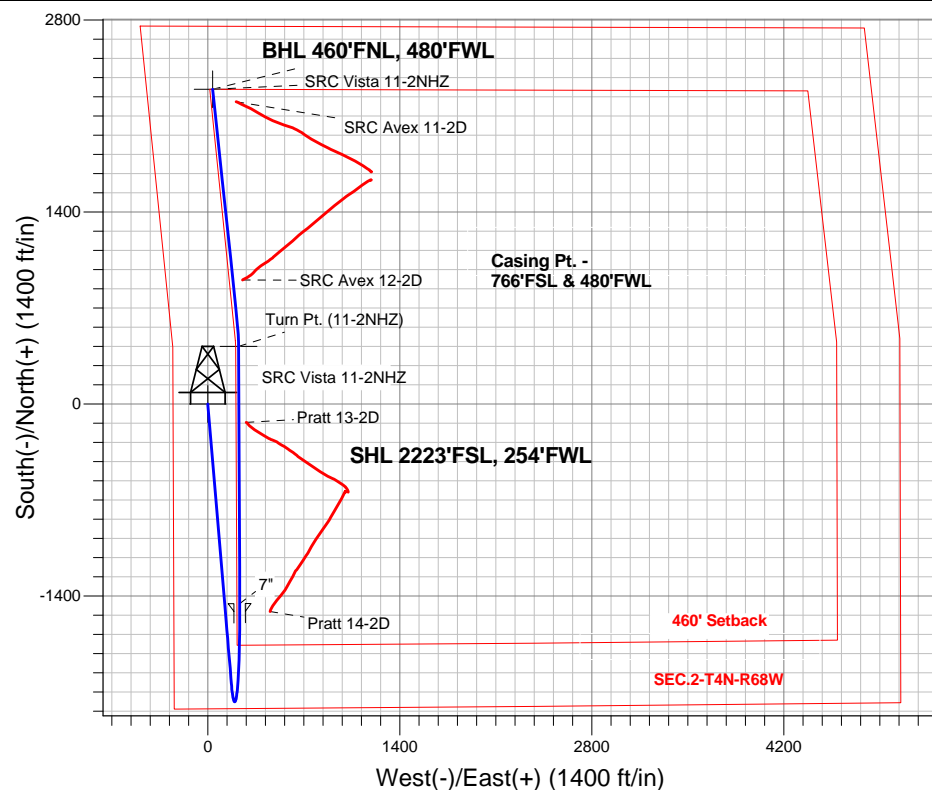
Azimuths to True North  
Magnetic North: 8.51°

Magnetic Field  
Strength: 52718.1snT  
Dip Angle: 66.85°  
Date: 11/10/2014  
Model: IGRF2010

SRC Vista (N/S) Pad Sec.2-T4N-R68W  
SRC Vista 11-2NHZ  
Plan #1 (11-06-14)  
15:09, November 10 2014

## ANNOTATIONS

TVD	MD	Annotation
2000.0	2000.0	KOP - Start Build 2.00
5769.1	6367.5	Start DLS 8.00 TFO -174.41
6900.0	7937.1	Start 1875.8 hold at 7937.1 MD
6900.0	10006.1	Start 1690.6 hold at 10006.1 MD
6900.0	11696.7	TD at 11696.7



## SECTION DETAILS

Sec	MD	Inc	Azi	TVD	+N/-S	+E/-W	DLeg	TFace	VSec	Target
1	0.0	0.00	0.00	0.0	0.0	0.0	0.00	0.00	0.0	
2	2000.0	0.00	0.00	2000.0	0.0	0.0	0.00	0.00	0.0	
3	3784.7	35.69	175.19	3671.5	-536.3	45.2	2.00	175.19	-535.5	
4	6367.5	35.69	175.19	5769.1	-2037.9	171.7	0.00	0.00	-2035.0	
5	7937.1	90.00	359.73	6900.0	-1455.0	233.3	8.00	-174.41	-1451.3	
6	9812.9	90.00	359.73	6900.0	420.8	224.5	0.00	0.00	424.2	Turn Pt. (11-2NHZ)
7	10006.1	90.00	353.93	6900.0	613.6	213.8	3.00	-90.00	616.8	
8	11696.7	90.00	353.93	6900.0	2294.8	35.1	0.00	0.00	2295.1	BHL 460'FNL, 480'FWL



## **Synergy Resources**

**SEC.2-T4N-R68W**

**SRC Vista (N/S) Pad Sec.2-T4N-R68W**

**SRC Vista 11-2NHZ**

**Wellbore #1**

**Plan: Plan #1 (11-06-14)**

## **Standard Planning Report**

**10 November, 2014**

Plan Sections										
Measured Depth (ft)	Inclination (°)	Azimuth (°)	Vertical Depth (ft)	+N/-S (ft)	+E/-W (ft)	Dogleg Rate (°/100ft)	Build Rate (°/100ft)	Turn Rate (°/100ft)	TFO (°)	Target
0.0	0.00	0.00	0.0	0.0	0.0	0.00	0.00	0.00	0.00	
2,000.0	0.00	0.00	2,000.0	0.0	0.0	0.00	0.00	0.00	0.00	
3,784.7	35.69	175.19	3,671.5	-536.3	45.2	2.00	2.00	0.00	175.19	
6,367.5	35.69	175.19	5,769.1	-2,037.9	171.7	0.00	0.00	0.00	0.00	
7,937.1	90.00	359.73	6,900.0	-1,455.0	233.3	8.00	3.46	-11.18	-174.41	
9,812.9	90.00	359.73	6,900.0	420.8	224.5	0.00	0.00	0.00	0.00	Turn Pt. (11-2NHZ)
10,006.1	90.00	353.93	6,900.0	613.6	213.8	3.00	0.00	-3.00	-90.00	
11,696.7	90.00	353.93	6,900.0	2,294.8	35.1	0.00	0.00	0.00	0.00	BHL 460'FNL, 480'

<b>Database:</b>	Landmark	<b>Local Co-ordinate Reference:</b>	Well SRC Vista 11-2NHZ
<b>Company:</b>	Synergy Resources	<b>TVD Reference:</b>	WELL @ 5013.0ft (Original Well Elev)
<b>Project:</b>	SEC.2-T4N-R68W	<b>MD Reference:</b>	WELL @ 5013.0ft (Original Well Elev)
<b>Site:</b>	SRC Vista (N/S) Pad Sec.2-T4N-R68W	<b>North Reference:</b>	True
<b>Well:</b>	SRC Vista 11-2NHZ	<b>Survey Calculation Method:</b>	Minimum Curvature
<b>Wellbore:</b>	Wellbore #1		
<b>Design:</b>	Plan #1 (11-06-14)		

Planned Survey									
Measured Depth (ft)	Inclination (°)	Azimuth (°)	Vertical Depth (ft)	+N/-S (ft)	+E/-W (ft)	Vertical Section (ft)	Dogleg Rate (°/100ft)	Build Rate (°/100ft)	Turn Rate (°/100ft)
0.0	0.00	0.00	0.0	0.0	0.0	0.0	0.00	0.00	0.00
1.0	0.00	0.00	1.0	0.0	0.0	0.0	0.00	0.00	0.00
<b>SHL 2223'FSL, 254'FWL</b>									
100.0	0.00	0.00	100.0	0.0	0.0	0.0	0.00	0.00	0.00
200.0	0.00	0.00	200.0	0.0	0.0	0.0	0.00	0.00	0.00
300.0	0.00	0.00	300.0	0.0	0.0	0.0	0.00	0.00	0.00
400.0	0.00	0.00	400.0	0.0	0.0	0.0	0.00	0.00	0.00
500.0	0.00	0.00	500.0	0.0	0.0	0.0	0.00	0.00	0.00
600.0	0.00	0.00	600.0	0.0	0.0	0.0	0.00	0.00	0.00
700.0	0.00	0.00	700.0	0.0	0.0	0.0	0.00	0.00	0.00
800.0	0.00	0.00	800.0	0.0	0.0	0.0	0.00	0.00	0.00
900.0	0.00	0.00	900.0	0.0	0.0	0.0	0.00	0.00	0.00
1,000.0	0.00	0.00	1,000.0	0.0	0.0	0.0	0.00	0.00	0.00
1,100.0	0.00	0.00	1,100.0	0.0	0.0	0.0	0.00	0.00	0.00
1,200.0	0.00	0.00	1,200.0	0.0	0.0	0.0	0.00	0.00	0.00
1,300.0	0.00	0.00	1,300.0	0.0	0.0	0.0	0.00	0.00	0.00
1,400.0	0.00	0.00	1,400.0	0.0	0.0	0.0	0.00	0.00	0.00
1,500.0	0.00	0.00	1,500.0	0.0	0.0	0.0	0.00	0.00	0.00
1,600.0	0.00	0.00	1,600.0	0.0	0.0	0.0	0.00	0.00	0.00
1,700.0	0.00	0.00	1,700.0	0.0	0.0	0.0	0.00	0.00	0.00
1,800.0	0.00	0.00	1,800.0	0.0	0.0	0.0	0.00	0.00	0.00
1,900.0	0.00	0.00	1,900.0	0.0	0.0	0.0	0.00	0.00	0.00
2,000.0	0.00	0.00	2,000.0	0.0	0.0	0.0	0.00	0.00	0.00
<b>KOP - Start Build 2.00</b>									
2,100.0	2.00	175.19	2,100.0	-1.7	0.1	-1.7	2.00	2.00	0.00
2,200.0	4.00	175.19	2,199.8	-7.0	0.6	-6.9	2.00	2.00	0.00
2,300.0	6.00	175.19	2,299.5	-15.6	1.3	-15.6	2.00	2.00	0.00
2,400.0	8.00	175.19	2,398.7	-27.8	2.3	-27.7	2.00	2.00	0.00
2,500.0	10.00	175.19	2,497.5	-43.4	3.7	-43.3	2.00	2.00	0.00
2,600.0	12.00	175.19	2,595.6	-62.4	5.3	-62.3	2.00	2.00	0.00
2,700.0	14.00	175.19	2,693.1	-84.8	7.1	-84.7	2.00	2.00	0.00
2,800.0	16.00	175.19	2,789.6	-110.6	9.3	-110.4	2.00	2.00	0.00
2,900.0	18.00	175.19	2,885.3	-139.7	11.8	-139.5	2.00	2.00	0.00
3,000.0	20.00	175.19	2,979.8	-172.2	14.5	-171.9	2.00	2.00	0.00
3,100.0	22.00	175.19	3,073.2	-207.9	17.5	-207.6	2.00	2.00	0.00
3,200.0	24.00	175.19	3,165.2	-246.8	20.8	-246.5	2.00	2.00	0.00
3,300.0	26.00	175.19	3,255.8	-288.9	24.3	-288.5	2.00	2.00	0.00
3,400.0	28.00	175.19	3,344.9	-334.1	28.1	-333.7	2.00	2.00	0.00
3,500.0	30.00	175.19	3,432.4	-382.5	32.2	-381.9	2.00	2.00	0.00
3,600.0	32.00	175.19	3,518.1	-433.8	36.5	-433.2	2.00	2.00	0.00
3,700.0	34.00	175.19	3,602.0	-488.0	41.1	-487.4	2.00	2.00	0.00
3,784.7	35.69	175.19	3,671.5	-536.3	45.2	-535.5	2.00	2.00	0.00
3,800.0	35.69	175.19	3,683.9	-545.2	45.9	-544.4	0.00	0.00	0.00
3,900.0	35.69	175.19	3,765.1	-603.3	50.8	-602.5	0.00	0.00	0.00
4,000.0	35.69	175.19	3,846.3	-661.4	55.7	-660.5	0.00	0.00	0.00
4,100.0	35.69	175.19	3,927.5	-719.6	60.6	-718.6	0.00	0.00	0.00
4,200.0	35.69	175.19	4,008.8	-777.7	65.5	-776.6	0.00	0.00	0.00
4,300.0	35.69	175.19	4,090.0	-835.9	70.4	-834.7	0.00	0.00	0.00
4,400.0	35.69	175.19	4,171.2	-894.0	75.3	-892.7	0.00	0.00	0.00
4,500.0	35.69	175.19	4,252.4	-952.1	80.2	-950.8	0.00	0.00	0.00
4,600.0	35.69	175.19	4,333.6	-1,010.3	85.1	-1,008.9	0.00	0.00	0.00
4,700.0	35.69	175.19	4,414.8	-1,068.4	90.0	-1,066.9	0.00	0.00	0.00
4,800.0	35.69	175.19	4,496.0	-1,126.6	94.9	-1,125.0	0.00	0.00	0.00
4,900.0	35.69	175.19	4,577.3	-1,184.7	99.8	-1,183.0	0.00	0.00	0.00

<b>Database:</b>	Landmark	<b>Local Co-ordinate Reference:</b>	Well SRC Vista 11-2NHZ
<b>Company:</b>	Synergy Resources	<b>TVD Reference:</b>	WELL @ 5013.0ft (Original Well Elev)
<b>Project:</b>	SEC.2-T4N-R68W	<b>MD Reference:</b>	WELL @ 5013.0ft (Original Well Elev)
<b>Site:</b>	SRC Vista (N/S) Pad Sec.2-T4N-R68W	<b>North Reference:</b>	True
<b>Well:</b>	SRC Vista 11-2NHZ	<b>Survey Calculation Method:</b>	Minimum Curvature
<b>Wellbore:</b>	Wellbore #1		
<b>Design:</b>	Plan #1 (11-06-14)		

Planned Survey									
Measured Depth (ft)	Inclination (°)	Azimuth (°)	Vertical Depth (ft)	+N/-S (ft)	+E/-W (ft)	Vertical Section (ft)	Dogleg Rate (°/100ft)	Build Rate (°/100ft)	Turn Rate (°/100ft)
5,000.0	35.69	175.19	4,658.5	-1,242.8	104.7	-1,241.1	0.00	0.00	0.00
5,100.0	35.69	175.19	4,739.7	-1,301.0	109.6	-1,299.1	0.00	0.00	0.00
5,200.0	35.69	175.19	4,820.9	-1,359.1	114.5	-1,357.2	0.00	0.00	0.00
5,300.0	35.69	175.19	4,902.1	-1,417.3	119.4	-1,415.3	0.00	0.00	0.00
5,400.0	35.69	175.19	4,983.3	-1,475.4	124.3	-1,473.3	0.00	0.00	0.00
5,500.0	35.69	175.19	5,064.5	-1,533.5	129.2	-1,531.4	0.00	0.00	0.00
5,600.0	35.69	175.19	5,145.8	-1,591.7	134.1	-1,589.4	0.00	0.00	0.00
5,700.0	35.69	175.19	5,227.0	-1,649.8	139.0	-1,647.5	0.00	0.00	0.00
5,800.0	35.69	175.19	5,308.2	-1,708.0	143.9	-1,705.6	0.00	0.00	0.00
5,900.0	35.69	175.19	5,389.4	-1,766.1	148.8	-1,763.6	0.00	0.00	0.00
6,000.0	35.69	175.19	5,470.6	-1,824.2	153.7	-1,821.7	0.00	0.00	0.00
6,100.0	35.69	175.19	5,551.8	-1,882.4	158.6	-1,879.7	0.00	0.00	0.00
6,200.0	35.69	175.19	5,633.1	-1,940.5	163.5	-1,937.8	0.00	0.00	0.00
6,300.0	35.69	175.19	5,714.3	-1,998.7	168.4	-1,995.8	0.00	0.00	0.00
6,367.5	35.69	175.19	5,769.1	-2,037.9	171.7	-2,035.0	0.00	0.00	0.00
Start DLS 8.00 TFO -174.41									
6,400.0	33.11	174.72	5,795.9	-2,056.2	173.3	-2,053.3	8.00	-7.96	-1.43
6,500.0	25.16	172.77	5,883.2	-2,104.6	178.5	-2,101.6	8.00	-7.94	-1.95
6,600.0	17.26	169.18	5,976.3	-2,140.3	183.9	-2,137.2	8.00	-7.90	-3.59
6,700.0	9.53	159.91	6,073.5	-2,162.7	189.6	-2,159.5	8.00	-7.73	-9.26
6,800.0	3.40	106.22	6,172.9	-2,171.3	195.3	-2,168.0	8.00	-6.14	-53.69
6,900.0	7.75	24.46	6,272.5	-2,166.0	200.9	-2,162.6	8.00	4.35	-81.76
7,000.0	15.38	11.68	6,370.5	-2,146.8	206.4	-2,143.4	8.00	7.63	-12.78
7,100.0	23.25	7.34	6,464.8	-2,114.2	211.6	-2,110.7	8.00	7.88	-4.33
7,200.0	31.19	5.13	6,553.6	-2,068.8	216.5	-2,065.2	8.00	7.94	-2.22
7,300.0	39.15	3.74	6,635.3	-2,011.4	220.9	-2,007.8	8.00	7.96	-1.39
7,400.0	47.12	2.76	6,708.2	-1,943.2	224.7	-1,939.5	8.00	7.97	-0.98
7,500.0	55.10	2.01	6,770.9	-1,865.5	227.9	-1,861.8	8.00	7.98	-0.75
7,600.0	63.08	1.39	6,822.3	-1,779.8	230.4	-1,776.0	8.00	7.98	-0.62
7,700.0	71.07	0.85	6,861.2	-1,687.8	232.2	-1,684.0	8.00	7.98	-0.54
7,800.0	79.05	0.36	6,886.9	-1,591.2	233.2	-1,587.5	8.00	7.99	-0.49
7,900.0	87.04	359.90	6,899.0	-1,492.0	233.4	-1,488.3	8.00	7.99	-0.46
7,937.1	90.00	359.73	6,900.0	-1,455.0	233.3	-1,451.2	7.99	7.98	-0.45
Start 1875.8 hold at 7937.1 MD - 7"									
8,000.0	90.00	359.73	6,900.0	-1,392.1	233.0	-1,388.3	0.00	0.00	0.00
8,100.0	90.00	359.73	6,900.0	-1,292.1	232.5	-1,288.3	0.00	0.00	0.00
8,200.0	90.00	359.73	6,900.0	-1,192.1	232.1	-1,188.4	0.00	0.00	0.00
8,300.0	90.00	359.73	6,900.0	-1,092.1	231.6	-1,088.4	0.00	0.00	0.00
8,400.0	90.00	359.73	6,900.0	-992.1	231.1	-988.4	0.00	0.00	0.00
8,500.0	90.00	359.73	6,900.0	-892.1	230.6	-888.4	0.00	0.00	0.00
8,600.0	90.00	359.73	6,900.0	-792.1	230.2	-788.4	0.00	0.00	0.00
8,700.0	90.00	359.73	6,900.0	-692.1	229.7	-688.5	0.00	0.00	0.00
8,800.0	90.00	359.73	6,900.0	-592.1	229.2	-588.5	0.00	0.00	0.00
8,900.0	90.00	359.73	6,900.0	-492.1	228.8	-488.5	0.00	0.00	0.00
9,000.0	90.00	359.73	6,900.0	-392.1	228.3	-388.5	0.00	0.00	0.00
9,100.0	90.00	359.73	6,900.0	-292.1	227.8	-288.5	0.00	0.00	0.00
9,200.0	90.00	359.73	6,900.0	-192.1	227.3	-188.6	0.00	0.00	0.00
9,300.0	90.00	359.73	6,900.0	-92.1	226.9	-88.6	0.00	0.00	0.00
9,400.0	90.00	359.73	6,900.0	7.9	226.4	11.4	0.00	0.00	0.00
9,500.0	90.00	359.73	6,900.0	107.9	225.9	111.4	0.00	0.00	0.00
9,600.0	90.00	359.73	6,900.0	207.9	225.5	211.4	0.00	0.00	0.00
9,700.0	90.00	359.73	6,900.0	307.9	225.0	311.3	0.00	0.00	0.00
9,800.0	90.00	359.73	6,900.0	407.9	224.5	411.3	0.00	0.00	0.00
9,812.9	90.00	359.73	6,900.0	420.8	224.5	424.2	0.00	0.00	0.00

<b>Database:</b>	Landmark	<b>Local Co-ordinate Reference:</b>	Well SRC Vista 11-2NHZ
<b>Company:</b>	Synergy Resources	<b>TVD Reference:</b>	WELL @ 5013.0ft (Original Well Elev)
<b>Project:</b>	SEC.2-T4N-R68W	<b>MD Reference:</b>	WELL @ 5013.0ft (Original Well Elev)
<b>Site:</b>	SRC Vista (N/S) Pad Sec.2-T4N-R68W	<b>North Reference:</b>	True
<b>Well:</b>	SRC Vista 11-2NHZ	<b>Survey Calculation Method:</b>	Minimum Curvature
<b>Wellbore:</b>	Wellbore #1		
<b>Design:</b>	Plan #1 (11-06-14)		

Planned Survey									
Measured Depth (ft)	Inclination (°)	Azimuth (°)	Vertical Depth (ft)	+N/-S (ft)	+E/-W (ft)	Vertical Section (ft)	Dogleg Rate (°/100ft)	Build Rate (°/100ft)	Turn Rate (°/100ft)
<b>Turn Pt. (11-2NHZ)</b>									
9,900.0	90.00	357.12	6,900.0	507.9	222.1	511.2	3.00	0.00	-3.00
10,000.0	90.00	354.12	6,900.0	607.6	214.4	610.8	3.00	0.00	-3.00
10,006.1	90.00	353.93	6,900.0	613.6	213.8	616.8	2.98	0.00	-2.98
<b>Start 1690.6 hold at 10006.1 MD</b>									
10,100.0	90.00	353.93	6,900.0	707.0	203.9	710.1	0.00	0.00	0.00
10,200.0	90.00	353.93	6,900.0	806.5	193.3	809.3	0.00	0.00	0.00
10,300.0	90.00	353.93	6,900.0	905.9	182.7	908.6	0.00	0.00	0.00
10,400.0	90.00	353.93	6,900.0	1,005.3	172.2	1,007.9	0.00	0.00	0.00
10,500.0	90.00	353.93	6,900.0	1,104.8	161.6	1,107.1	0.00	0.00	0.00
10,600.0	90.00	353.93	6,900.0	1,204.2	151.0	1,206.4	0.00	0.00	0.00
10,700.0	90.00	353.93	6,900.0	1,303.7	140.5	1,305.7	0.00	0.00	0.00
10,800.0	90.00	353.93	6,900.0	1,403.1	129.9	1,404.9	0.00	0.00	0.00
10,900.0	90.00	353.93	6,900.0	1,502.5	119.3	1,504.2	0.00	0.00	0.00
11,000.0	90.00	353.93	6,900.0	1,602.0	108.7	1,603.5	0.00	0.00	0.00
11,100.0	90.00	353.93	6,900.0	1,701.4	98.2	1,702.7	0.00	0.00	0.00
11,200.0	90.00	353.93	6,900.0	1,800.9	87.6	1,802.0	0.00	0.00	0.00
11,300.0	90.00	353.93	6,900.0	1,900.3	77.0	1,901.3	0.00	0.00	0.00
11,400.0	90.00	353.93	6,900.0	1,999.7	66.5	2,000.5	0.00	0.00	0.00
11,500.0	90.00	353.93	6,900.0	2,099.2	55.9	2,099.8	0.00	0.00	0.00
11,600.0	90.00	353.93	6,900.0	2,198.6	45.3	2,199.1	0.00	0.00	0.00
11,696.7	90.00	353.93	6,900.0	2,294.8	35.1	2,295.1	0.00	0.00	0.00
<b>TD at 11696.7 - BHL 460'FNL, 480'FWL</b>									

Targets									
Target Name	Dip Angle (°)	Dip Dir. (°)	TVD (ft)	+N/-S (ft)	+E/-W (ft)	Northing (ft)	Easting (ft)	Latitude	Longitude
- hit/miss target									
- Shape									
SHL 2223'FSL, 254'F	0.00	0.00	1.0	0.0	0.0	1,367,716.75	3,145,254.51	40.341612	-104.978905
- plan hits target center									
- Point									
Turn Pt. (11-2NHZ)	0.00	0.00	6,900.0	420.8	224.4	1,368,138.82	3,145,476.43	40.342767	-104.978100
- plan misses target center by 0.1ft at 9812.9ft MD (6900.0 TVD, 420.8 N, 224.5 E)									
- Point									
BHL 460'FNL, 480'FW	0.00	0.00	6,900.0	2,294.8	35.1	1,370,011.60	3,145,276.15	40.347911	-104.978779
- plan hits target center									
- Point									

Casing Points					
Measured Depth (ft)	Vertical Depth (ft)	Name	Casing Diameter (")	Hole Diameter (")	
7,937.1	6,900.0	7"	7	7-1/2	

<b>Database:</b>	Landmark	<b>Local Co-ordinate Reference:</b>	Well SRC Vista 11-2NHZ
<b>Company:</b>	Synergy Resources	<b>TVD Reference:</b>	WELL @ 5013.0ft (Original Well Elev)
<b>Project:</b>	SEC.2-T4N-R68W	<b>MD Reference:</b>	WELL @ 5013.0ft (Original Well Elev)
<b>Site:</b>	SRC Vista (N/S) Pad Sec.2-T4N-R68W	<b>North Reference:</b>	True
<b>Well:</b>	SRC Vista 11-2NHZ	<b>Survey Calculation Method:</b>	Minimum Curvature
<b>Wellbore:</b>	Wellbore #1		
<b>Design:</b>	Plan #1 (11-06-14)		

Plan Annotations				
Measured Depth (ft)	Vertical Depth (ft)	Local Coordinates		Comment
		+N/-S (ft)	+E/-W (ft)	
2,000.0	2,000.0	0.0	0.0	KOP - Start Build 2.00
6,367.5	5,769.1	-536.3	45.2	Start DLS 8.00 TFO -174.41
7,937.1	6,900.0	-2,037.9	171.7	Start 1875.8 hold at 7937.1 MD
10,006.1	6,900.0	-1,455.0	233.3	Start 1690.6 hold at 10006.1 MD
11,696.7	6,900.0	420.8	224.5	TD at 11696.7



## **Synergy Resources**

**SEC.2-T4N-R68W**

**SRC Vista (N/S) Pad Sec.2-T4N-R68W**

**SRC Vista 11-2NHZ**

**Wellbore #1**

**Plan #1 (11-06-14)**

## **Anticollision Report**

**10 November, 2014**





<b>Company:</b>	Synergy Resources	<b>Local Co-ordinate Reference:</b>	Well SRC Vista 11-2NHZ
<b>Project:</b>	SEC.2-T4N-R68W	<b>TVD Reference:</b>	WELL @ 5013.0ft (Original Well Elev)
<b>Reference Site:</b>	SRC Vista (N/S) Pad Sec.2-T4N-R68W	<b>MD Reference:</b>	WELL @ 5013.0ft (Original Well Elev)
<b>Site Error:</b>	0.0ft	<b>North Reference:</b>	True
<b>Reference Well:</b>	SRC Vista 11-2NHZ	<b>Survey Calculation Method:</b>	Minimum Curvature
<b>Well Error:</b>	0.0ft	<b>Output errors are at</b>	2.00 sigma
<b>Reference Wellbore</b>	Wellbore #1	<b>Database:</b>	Landmark
<b>Reference Design:</b>	Plan #1 (11-06-14)	<b>Offset TVD Reference:</b>	Offset Datum

Offset Design												Offset Site Error:	0.0 ft
Survey Program: 48-MWD												Offset Well Error:	0.0 ft
Reference		Offset		Semi Major Axis			Distance						Warning
Measured Depth (ft)	Vertical Depth (ft)	Measured Depth (ft)	Vertical Depth (ft)	Reference (ft)	Offset (ft)	Highside Toolface (°)	Offset Wellbore Centre +N/-S (ft)	+E/-W (ft)	Between Centres (ft)	Between Ellipses (ft)	Minimum Separation (ft)	Separation Factor	
2,100.0	2,100.0	2,242.9	2,227.4	4.6	6.4	-54.48	-497.6	827.7	972.6	963.1	9.53	102.037	
2,200.0	2,199.8	2,342.4	2,326.2	4.8	6.7	-55.03	-490.7	817.1	956.9	947.0	9.92	96.472	
2,300.0	2,299.5	2,442.6	2,425.5	4.9	7.0	-55.80	-483.8	806.1	939.1	928.7	10.31	91.053	
2,400.0	2,398.7	2,532.2	2,514.4	5.1	7.3	-56.71	-478.0	796.5	919.7	909.0	10.69	86.041	
2,500.0	2,497.5	2,629.2	2,610.7	5.3	7.5	-57.92	-472.1	786.5	899.2	888.1	11.10	81.019	
2,600.0	2,595.6	2,726.5	2,707.3	5.6	7.8	-59.44	-465.4	776.5	876.8	865.2	11.54	75.980	
2,700.0	2,693.1	2,817.5	2,797.6	5.8	8.1	-61.17	-459.2	767.3	853.3	841.3	12.01	71.048	
2,800.0	2,789.6	2,912.6	2,892.0	6.2	8.4	-63.28	-452.8	757.9	829.0	816.4	12.55	66.047	
2,900.0	2,885.3	3,014.1	2,992.7	6.5	8.7	-65.90	-445.4	747.6	803.5	790.3	13.20	60.894	
3,000.0	2,979.8	3,110.6	3,088.3	7.0	9.0	-68.83	-437.9	736.6	776.5	762.6	13.93	55.761	
3,100.0	3,073.2	3,191.9	3,168.8	7.5	9.2	-71.70	-431.8	727.7	750.3	735.6	14.71	51.012	
3,200.0	3,165.2	3,278.9	3,255.2	8.0	9.5	-75.08	-425.6	718.7	725.5	709.9	15.62	46.448	
3,300.0	3,255.8	3,366.0	3,341.5	8.7	9.8	-78.84	-419.2	709.6	702.3	685.7	16.65	42.182	
3,400.0	3,344.9	3,451.1	3,425.9	9.4	10.0	-82.90	-412.6	700.8	681.6	663.8	17.78	38.326	
3,500.0	3,432.4	3,534.1	3,508.2	10.2	10.3	-87.18	-405.9	692.1	664.2	645.2	18.99	34.973	
3,600.0	3,518.1	3,615.4	3,588.8	11.0	10.6	-91.60	-399.7	683.5	651.3	631.0	20.24	32.171	
3,700.0	3,602.0	3,694.7	3,667.4	11.9	10.8	-96.08	-393.8	675.1	643.9	622.4	21.50	29.940	
3,763.8	3,654.5	3,743.3	3,715.7	12.5	11.0	-98.87	-390.3	669.9	642.4	620.1	22.30	28.812	
3,784.7	3,671.5	3,758.7	3,731.0	12.8	11.0	-99.76	-389.2	668.2	642.6	620.0	22.55	28.501	
3,800.0	3,683.9	3,770.0	3,742.1	12.9	11.0	-100.41	-388.5	667.1	642.9	620.2	22.73	28.282	
3,900.0	3,765.1	3,843.9	3,815.5	13.9	11.3	-104.65	-383.5	659.6	648.9	625.0	23.91	27.142	
4,000.0	3,846.3	3,915.7	3,886.8	15.0	11.5	-108.71	-378.6	652.6	661.5	636.5	24.99	26.467	
4,100.0	3,927.5	3,987.6	3,958.2	16.0	11.7	-112.69	-373.1	645.9	680.7	654.7	25.99	26.188	
4,200.0	4,008.8	4,066.5	4,036.4	17.1	11.9	-116.91	-366.9	638.4	705.4	678.5	26.89	26.235	
4,300.0	4,090.0	4,144.5	4,113.9	18.1	12.2	-120.90	-360.7	630.6	734.8	707.2	27.68	26.552	
4,400.0	4,171.2	4,222.3	4,190.9	19.2	12.4	-124.65	-354.7	622.7	768.5	740.2	28.37	27.094	
4,500.0	4,252.4	4,298.1	4,266.2	20.3	12.6	-128.08	-349.2	615.1	806.0	777.1	28.97	27.823	
4,600.0	4,333.6	4,375.1	4,342.7	21.4	12.9	-131.28	-344.1	607.9	846.8	817.3	29.50	28.706	
4,700.0	4,414.8	4,456.8	4,423.9	22.5	13.1	-134.43	-339.1	600.3	890.2	860.2	29.95	29.726	
4,800.0	4,496.0	4,533.5	4,500.1	23.6	13.3	-137.17	-334.5	592.9	935.6	905.2	30.37	30.804	
4,900.0	4,577.3	4,605.0	4,571.0	24.7	13.5	-139.61	-329.5	585.2	983.4	952.6	30.78	31.948	
8,300.0	6,900.0	6,909.2	6,857.3	33.4	20.5	67.29	-186.1	338.9	913.5	866.1	47.44	19.254	
8,400.0	6,900.0	6,915.9	6,864.0	32.9	20.5	70.15	-185.6	338.2	814.5	766.7	47.80	17.040	
8,500.0	6,900.0	6,922.6	6,870.6	32.6	20.5	73.14	-185.2	337.4	715.7	667.5	48.15	14.864	
8,600.0	6,900.0	6,929.0	6,877.0	32.4	20.5	76.12	-184.8	336.7	617.1	568.7	48.47	12.732	
8,700.0	6,900.0	6,935.3	6,883.2	32.2	20.6	79.19	-184.4	336.0	519.1	470.3	48.80	10.637	
8,800.0	6,900.0	6,941.5	6,889.4	32.2	20.6	82.29	-184.0	335.3	421.9	372.8	49.12	8.588	
8,900.0	6,900.0	6,947.8	6,895.6	32.3	20.6	85.51	-183.6	334.6	326.2	276.8	49.46	6.596	
9,000.0	6,900.0	6,954.1	6,901.8	32.5	20.6	88.84	-183.2	333.9	234.1	184.3	49.79	4.701	
9,100.0	6,900.0	6,960.5	6,908.2	32.9	20.6	92.25	-182.8	333.3	151.9	101.8	50.13	3.031	
9,200.0	6,900.0	6,966.9	6,914.6	33.3	20.7	95.73	-182.4	332.6	106.2	55.7	50.46	2.105	
9,209.3	6,900.0	6,967.5	6,915.2	33.4	20.7	96.06	-182.3	332.5	105.8	55.3	50.49	2.095 CC, ES, SF	
9,300.0	6,900.0	6,973.4	6,921.0	33.9	20.7	99.26	-181.9	331.9	139.3	88.5	50.77	2.743	
9,400.0	6,900.0	6,980.0	6,927.6	34.5	20.7	102.79	-181.5	331.2	217.8	166.7	51.07	4.264	
9,500.0	6,900.0	6,986.7	6,934.2	35.2	20.7	106.32	-181.0	330.5	308.8	257.5	51.34	6.014	
9,600.0	6,900.0	6,993.5	6,940.9	36.1	20.7	109.80	-180.6	329.8	404.0	352.4	51.60	7.830	
9,700.0	6,900.0	7,000.3	6,947.7	37.0	20.8	113.22	-180.1	329.1	501.0	449.1	51.83	9.666	
9,800.0	6,900.0	7,007.2	6,954.6	38.0	20.8	116.55	-179.7	328.5	598.9	546.8	52.04	11.508	
9,812.9	6,900.0	7,008.1	6,955.4	38.1	20.8	116.97	-179.6	328.4	611.5	559.4	52.06	11.745	
9,900.0	6,900.0	7,014.4	6,961.7	38.8	20.8	129.10	-179.2	327.7	697.5	647.9	49.65	14.049	
10,006.1	6,900.0	7,022.6	6,969.9	39.6	20.8	156.38	-178.6	326.9	803.0	761.5	41.43	19.384	
10,100.0	6,900.0	7,030.2	6,977.4	40.5	20.8	159.03	-178.1	326.2	896.5	855.2	41.32	21.696	

CC - Min centre to center distance or convergent point, SF - min separation factor, ES - min ellipse separation

<b>Company:</b>	Synergy Resources	<b>Local Co-ordinate Reference:</b>	Well SRC Vista 11-2NHZ
<b>Project:</b>	SEC.2-T4N-R68W	<b>TVD Reference:</b>	WELL @ 5013.0ft (Original Well Elev)
<b>Reference Site:</b>	SRC Vista (N/S) Pad Sec.2-T4N-R68W	<b>MD Reference:</b>	WELL @ 5013.0ft (Original Well Elev)
<b>Site Error:</b>	0.0ft	<b>North Reference:</b>	True
<b>Reference Well:</b>	SRC Vista 11-2NHZ	<b>Survey Calculation Method:</b>	Minimum Curvature
<b>Well Error:</b>	0.0ft	<b>Output errors are at</b>	2.00 sigma
<b>Reference Wellbore</b>	Wellbore #1	<b>Database:</b>	Landmark
<b>Reference Design:</b>	Plan #1 (11-06-14)	<b>Offset TVD Reference:</b>	Offset Datum

<b>Offset Design</b> Pratt 14-2D Pad Sec.2-T4N-R68W - Pratt 13-2D - Wellbore #1 - Wellbore #1												<b>Offset Site Error:</b>	0.0 ft
Survey Program: 48-MWD												<b>Offset Well Error:</b>	0.0 ft
Reference	Offset	Semi Major Axis		Distance									
Measured Depth (ft)	Vertical Depth (ft)	Measured Depth (ft)	Vertical Depth (ft)	Reference (ft)	Offset (ft)	Highside Toolface (°)	Offset Wellbore Centre +N/-S (ft)	Offset Wellbore Centre +E/-W (ft)	Between Centres (ft)	Between Ellipses (ft)	Minimum Separation (ft)	Separation Factor	Warning
10,200.0	6,900.0	7,038.4	6,985.5	41.9	20.9	161.40	-177.5	325.5	996.2	954.7	41.42	24.050	

<b>Company:</b>	Synergy Resources	<b>Local Co-ordinate Reference:</b>	Well SRC Vista 11-2NHZ
<b>Project:</b>	SEC.2-T4N-R68W	<b>TVD Reference:</b>	WELL @ 5013.0ft (Original Well Elev)
<b>Reference Site:</b>	SRC Vista (N/S) Pad Sec.2-T4N-R68W	<b>MD Reference:</b>	WELL @ 5013.0ft (Original Well Elev)
<b>Site Error:</b>	0.0ft	<b>North Reference:</b>	True
<b>Reference Well:</b>	SRC Vista 11-2NHZ	<b>Survey Calculation Method:</b>	Minimum Curvature
<b>Well Error:</b>	0.0ft	<b>Output errors are at</b>	2.00 sigma
<b>Reference Wellbore</b>	Wellbore #1	<b>Database:</b>	Landmark
<b>Reference Design:</b>	Plan #1 (11-06-14)	<b>Offset TVD Reference:</b>	Offset Datum

Offset Design												Offset Site Error:	0.0 ft
Survey Program: 108-MWD												Offset Well Error:	0.0 ft
Reference		Offset		Semi Major Axis			Distance						
Measured Depth (ft)	Vertical Depth (ft)	Measured Depth (ft)	Vertical Depth (ft)	Reference (ft)	Offset (ft)	Highside Toolface (°)	Offset Wellbore Centre +N/-S (ft)	+E/-W (ft)	Between Centres (ft)	Between Ellipses (ft)	Minimum Separation (ft)	Separation Factor	Warning
3,400.0	3,344.9	3,365.9	3,339.0	9.4	9.2	-51.65	-931.1	826.0	996.5	979.2	17.32	57.533	
3,500.0	3,432.4	3,455.8	3,427.9	10.2	9.5	-53.55	-941.8	819.3	965.7	947.4	18.25	52.916	
3,600.0	3,518.1	3,554.3	3,525.4	11.0	9.8	-55.87	-954.2	811.3	933.3	914.0	19.35	48.245	
3,700.0	3,602.0	3,646.9	3,616.6	11.9	10.1	-58.30	-967.2	801.9	899.2	878.7	20.54	43.778	
3,784.7	3,671.5	3,720.5	3,689.0	12.8	10.4	-60.52	-977.8	794.4	869.8	848.1	21.63	40.212	
3,800.0	3,683.9	3,733.5	3,701.8	12.9	10.4	-60.84	-979.7	793.1	864.5	842.6	21.83	39.593	
3,900.0	3,765.1	3,817.8	3,784.8	13.9	10.7	-63.01	-991.9	784.8	830.6	807.4	23.19	35.813	
4,000.0	3,846.3	3,902.5	3,868.3	15.0	11.0	-65.36	-1,003.9	776.9	798.6	774.0	24.60	32.469	
4,100.0	3,927.5	3,987.4	3,952.1	16.0	11.3	-67.90	-1,015.9	769.5	768.5	742.5	26.03	29.525	
4,200.0	4,008.8	4,072.8	4,036.3	17.1	11.6	-70.65	-1,027.4	762.4	740.7	713.2	27.49	26.946	
4,300.0	4,090.0	4,157.1	4,119.7	18.1	11.9	-73.60	-1,038.2	756.1	715.3	686.4	28.95	24.707	
4,400.0	4,171.2	4,241.8	4,203.5	19.2	12.2	-76.72	-1,049.1	750.0	692.9	662.4	30.41	22.782	
4,500.0	4,252.4	4,333.3	4,293.9	20.3	12.5	-80.23	-1,061.3	743.3	673.0	641.1	31.89	21.103	
4,600.0	4,333.6	4,423.5	4,383.0	21.4	12.8	-83.79	-1,073.9	736.1	655.6	622.3	33.32	19.679	
4,700.0	4,414.8	4,514.7	4,472.9	22.5	13.1	-87.54	-1,086.6	728.6	641.1	606.4	34.68	18.489	
4,800.0	4,496.0	4,613.1	4,569.8	23.6	13.5	-91.64	-1,101.4	719.4	628.8	592.8	35.96	17.486	
4,900.0	4,577.3	4,698.1	4,653.3	24.7	13.8	-95.25	-1,114.6	710.9	619.2	582.1	37.11	16.685	
5,000.0	4,658.5	4,782.5	4,736.4	25.8	14.1	-98.95	-1,127.0	702.9	613.7	575.6	38.14	16.092	
5,083.8	4,726.5	4,853.8	4,806.7	26.8	14.3	-102.15	-1,137.0	696.4	612.3	573.4	38.89	15.745	
5,100.0	4,739.7	4,867.6	4,820.3	26.9	14.4	-102.77	-1,138.9	695.2	612.3	573.3	39.02	15.692	
5,200.0	4,820.9	4,955.5	4,907.1	28.0	14.7	-106.72	-1,150.9	687.3	614.9	575.1	39.75	15.468	
5,300.0	4,902.1	5,044.5	4,994.7	29.2	15.0	-110.64	-1,163.6	679.4	621.0	580.7	40.34	15.394	
5,400.0	4,983.3	5,133.3	5,082.3	30.3	15.3	-114.50	-1,176.0	671.3	630.6	589.8	40.79	15.459	
5,500.0	5,064.5	5,221.7	5,169.5	31.4	15.6	-118.27	-1,188.1	662.8	643.5	602.4	41.10	15.656	
5,600.0	5,145.8	5,305.4	5,252.0	32.5	15.9	-121.74	-1,199.2	654.7	659.8	618.5	41.34	15.961	
5,700.0	5,227.0	5,390.0	5,335.7	33.6	16.2	-125.18	-1,209.1	646.5	680.1	638.7	41.45	16.409	
5,800.0	5,308.2	5,465.5	5,410.4	34.8	16.5	-128.09	-1,217.6	640.0	704.3	662.7	41.60	16.928	
5,900.0	5,389.4	5,550.6	5,494.7	35.9	16.7	-131.06	-1,228.1	634.2	731.5	689.8	41.67	17.556	
6,000.0	5,470.6	5,640.4	5,583.5	37.0	17.0	-133.95	-1,239.8	628.6	760.8	719.1	41.68	18.251	
6,100.0	5,551.8	5,735.4	5,677.4	38.1	17.3	-136.80	-1,252.6	622.3	791.4	749.7	41.65	19.001	
6,200.0	5,633.1	5,826.2	5,767.1	39.3	17.7	-139.35	-1,265.2	615.7	822.9	781.3	41.64	19.761	
6,300.0	5,714.3	5,914.7	5,854.5	40.4	18.0	-141.73	-1,277.2	608.6	856.0	814.3	41.65	20.552	
6,367.5	5,769.1	5,981.9	5,920.8	41.2	18.2	-143.43	-1,286.5	602.9	878.7	837.1	41.60	21.125	
6,400.0	5,795.9	6,014.9	5,953.3	41.5	18.3	-144.26	-1,291.3	600.1	889.1	847.6	41.53	21.409	
6,450.0	5,838.7	6,068.1	6,005.7	41.8	18.5	-145.16	-1,299.3	595.4	902.6	861.1	41.44	21.779	
6,500.0	5,883.2	6,123.4	6,060.1	42.2	18.7	-145.52	-1,308.3	590.5	912.9	871.5	41.41	22.048	
6,550.0	5,929.1	6,175.9	6,111.6	42.5	18.9	-145.17	-1,317.2	585.9	919.9	878.5	41.40	22.222	
6,600.0	5,976.3	6,221.2	6,156.0	42.7	19.1	-143.87	-1,324.9	581.9	924.0	882.6	41.38	22.331	
6,650.0	6,024.5	6,266.8	6,200.8	42.9	19.3	-141.21	-1,332.4	577.7	925.2	883.9	41.30	22.400	
6,700.0	6,073.5	6,314.6	6,247.9	43.1	19.5	-135.76	-1,340.0	573.2	923.4	882.2	41.16	22.434	
6,750.0	6,123.1	6,364.2	6,296.6	43.2	19.7	-122.72	-1,347.7	568.3	918.5	877.6	40.95	22.430	
6,800.0	6,172.9	6,413.5	6,345.0	43.3	19.8	-82.60	-1,355.2	563.0	910.5	869.9	40.67	22.387	
6,850.0	6,222.8	6,459.9	6,390.6	43.3	20.0	-23.09	-1,362.2	557.9	899.5	859.1	40.34	22.298	
6,900.0	6,272.5	6,505.5	6,435.5	43.2	20.2	-0.65	-1,369.0	553.0	885.5	845.5	39.96	22.157	
6,950.0	6,321.8	6,550.6	6,479.8	43.2	20.4	8.23	-1,375.5	548.1	868.6	829.0	39.57	21.949	
7,000.0	6,370.5	6,595.8	6,524.3	43.0	20.5	13.16	-1,382.0	543.2	848.8	809.6	39.19	21.657	
7,050.0	6,418.2	6,639.7	6,567.4	42.9	20.7	16.64	-1,388.3	538.3	826.2	787.3	38.87	21.257	
7,100.0	6,464.8	6,682.6	6,609.6	42.7	20.9	19.57	-1,394.3	533.4	800.9	762.2	38.65	20.721	
7,150.0	6,510.0	6,724.9	6,651.2	42.4	21.0	22.41	-1,400.2	528.5	772.9	734.3	38.63	20.010	
7,200.0	6,553.6	6,765.1	6,690.7	42.2	21.2	25.41	-1,405.9	523.9	742.5	703.6	38.89	19.093	
7,250.0	6,595.5	6,800.0	6,725.0	41.8	21.3	28.70	-1,410.9	519.9	709.8	670.3	39.49	17.975	
7,300.0	6,635.3	6,834.9	6,759.3	41.5	21.4	32.55	-1,415.9	516.0	675.2	634.5	40.62	16.621	

CC - Min centre to center distance or convergent point, SF - min separation factor, ES - min ellipse separation

<b>Company:</b>	Synergy Resources	<b>Local Co-ordinate Reference:</b>	Well SRC Vista 11-2NHZ
<b>Project:</b>	SEC.2-T4N-R68W	<b>TVD Reference:</b>	WELL @ 5013.0ft (Original Well Elev)
<b>Reference Site:</b>	SRC Vista (N/S) Pad Sec.2-T4N-R68W	<b>MD Reference:</b>	WELL @ 5013.0ft (Original Well Elev)
<b>Site Error:</b>	0.0ft	<b>North Reference:</b>	True
<b>Reference Well:</b>	SRC Vista 11-2NHZ	<b>Survey Calculation Method:</b>	Minimum Curvature
<b>Well Error:</b>	0.0ft	<b>Output errors are at</b>	2.00 sigma
<b>Reference Wellbore</b>	Wellbore #1	<b>Database:</b>	Landmark
<b>Reference Design:</b>	Plan #1 (11-06-14)	<b>Offset TVD Reference:</b>	Offset Datum

Offset Design Pratt 14-2D Pad Sec.2-T4N-R68W - Pratt 14-2D - Wellbore #1 - Wellbore #1												Offset Site Error:	0.0 ft
Survey Program: 108-MWD												Offset Well Error:	0.0 ft
Reference		Offset		Semi Major Axis			Distance						Warning
Measured Depth	Vertical Depth	Measured Depth	Vertical Depth	Reference	Offset	Highside Toolface	Offset Wellbore Centre	Between Centres	Between Ellipses	Minimum Separation	Separation Factor		
(ft)	(ft)	(ft)	(ft)	(ft)	(ft)	(°)	+N/-S (ft)	+E/-W (ft)	(ft)	(ft)	(ft)		
7,350.0	6,672.9	6,864.9	6,788.9	41.1	21.5	36.97	-1,420.1	512.6	638.9	596.6	42.28	15.110	
7,400.0	6,708.2	6,892.7	6,816.3	40.7	21.6	42.15	-1,423.9	509.6	601.2	556.6	44.56	13.490	
7,450.0	6,740.9	6,918.1	6,841.2	40.3	21.7	48.19	-1,427.3	506.8	562.4	515.0	47.40	11.866	
7,500.0	6,770.9	6,939.9	6,862.7	39.9	21.8	54.95	-1,430.2	504.5	523.0	472.5	50.46	10.363	
7,550.0	6,798.1	6,958.5	6,881.1	39.4	21.9	62.20	-1,432.5	502.5	483.3	430.0	53.37	9.056	
7,600.0	6,822.3	6,974.7	6,897.1	38.9	21.9	69.70	-1,434.5	500.9	444.1	388.3	55.74	7.967	
7,650.0	6,843.3	6,988.4	6,910.6	38.5	22.0	76.93	-1,436.2	499.5	405.9	348.6	57.26	7.088	
7,700.0	6,861.2	6,999.3	6,921.4	38.0	22.0	83.42	-1,437.4	498.4	369.6	311.7	57.89	6.385	
7,750.0	6,875.8	7,007.4	6,929.4	37.5	22.0	88.77	-1,438.3	497.7	336.4	278.6	57.82	5.818	
7,800.0	6,886.9	7,012.6	6,934.5	37.1	22.0	92.74	-1,438.9	497.2	307.7	250.4	57.34	5.366	
7,850.0	6,894.7	7,014.6	6,936.6	36.6	22.1	95.22	-1,439.2	497.0	285.2	228.5	56.75	5.026	
7,900.0	6,899.0	7,013.5	6,935.4	36.2	22.1	96.19	-1,439.0	497.1	270.8	214.5	56.22	4.816	
7,937.1	6,900.0	7,010.4	6,932.4	35.9	22.0	95.92	-1,438.7	497.4	266.0	210.1	55.91	4.757 SF	
7,952.3	6,900.0	7,008.8	6,930.8	35.7	22.0	95.57	-1,438.5	497.5	265.6	209.7	55.81	4.758 CC, ES	
8,000.0	6,900.0	7,003.6	6,925.7	35.4	22.0	94.46	-1,437.9	498.0	269.7	214.3	55.49	4.861	
8,100.0	6,900.0	6,992.4	6,914.5	34.6	22.0	92.05	-1,436.6	499.1	303.4	248.6	54.83	5.534	
8,200.0	6,900.0	6,980.5	6,902.8	34.0	21.9	89.54	-1,435.2	500.3	362.1	307.9	54.18	6.683	
8,300.0	6,900.0	6,968.1	6,890.6	33.4	21.9	86.92	-1,433.7	501.5	435.7	382.1	53.55	8.137	
8,400.0	6,900.0	6,955.0	6,877.6	32.9	21.9	84.21	-1,432.1	502.9	517.9	465.0	52.93	9.785	
8,500.0	6,900.0	6,941.2	6,864.0	32.6	21.8	81.40	-1,430.4	504.3	605.3	552.9	52.34	11.565	
8,600.0	6,900.0	6,926.8	6,849.8	32.4	21.8	78.56	-1,428.5	505.9	695.8	644.0	51.77	13.439	
8,700.0	6,900.0	6,912.8	6,836.0	32.2	21.7	75.88	-1,426.6	507.4	788.3	737.0	51.28	15.373	
8,800.0	6,900.0	6,898.5	6,822.0	32.2	21.7	73.25	-1,424.7	508.9	882.3	831.4	50.85	17.352	
8,900.0	6,900.0	6,884.0	6,807.6	32.3	21.6	70.66	-1,422.7	510.5	977.2	926.8	50.48	19.358	

<b>Company:</b>	Synergy Resources	<b>Local Co-ordinate Reference:</b>	Well SRC Vista 11-2NHZ
<b>Project:</b>	SEC.2-T4N-R68W	<b>TVD Reference:</b>	WELL @ 5013.0ft (Original Well Elev)
<b>Reference Site:</b>	SRC Vista (N/S) Pad Sec.2-T4N-R68W	<b>MD Reference:</b>	WELL @ 5013.0ft (Original Well Elev)
<b>Site Error:</b>	0.0ft	<b>North Reference:</b>	True
<b>Reference Well:</b>	SRC Vista 11-2NHZ	<b>Survey Calculation Method:</b>	Minimum Curvature
<b>Well Error:</b>	0.0ft	<b>Output errors are at</b>	2.00 sigma
<b>Reference Wellbore</b>	Wellbore #1	<b>Database:</b>	Landmark
<b>Reference Design:</b>	Plan #1 (11-06-14)	<b>Offset TVD Reference:</b>	Offset Datum

<b>Offset Design</b> SRC Avex 11-2D Pad Sec.2-T4N-R68W - SRC Avex 11-2D - Wellbore #1 - Wellbore #1												<b>Offset Site Error:</b>	0.0 ft
Survey Program: 171-MWD												<b>Offset Well Error:</b>	0.0 ft
Reference		Offset		Semi Major Axis			Distance						
Measured Depth (ft)	Vertical Depth (ft)	Measured Depth (ft)	Vertical Depth (ft)	Reference (ft)	Offset (ft)	Highside Toolface (°)	Offset Wellbore Centre +N/-S (ft)	+E/-W (ft)	Between Centres (ft)	Between Ellipses (ft)	Minimum Separation (ft)	Separation Factor	Warning
10,600.0	6,900.0	6,942.9	6,848.9	47.5	23.7	75.52	2,177.9	262.0	981.5	917.1	64.42	15.236	
10,700.0	6,900.0	6,952.6	6,858.4	49.0	23.7	77.87	2,178.6	260.6	884.3	818.0	66.34	13.330	
10,800.0	6,900.0	6,961.8	6,867.6	50.6	23.7	80.19	2,179.3	259.2	787.7	719.5	68.24	11.543	
10,900.0	6,900.0	6,970.7	6,876.4	52.1	23.8	82.49	2,179.9	258.0	691.9	621.8	70.12	9.868	
11,000.0	6,900.0	6,979.3	6,884.8	53.7	23.8	84.74	2,180.5	256.8	597.4	525.5	71.96	8.302	
11,100.0	6,900.0	6,987.5	6,893.0	55.3	23.8	86.95	2,181.0	255.7	504.9	431.2	73.77	6.845	
11,200.0	6,900.0	6,995.4	6,900.8	57.0	23.8	89.11	2,181.5	254.7	415.7	340.2	75.53	5.504	
11,300.0	6,900.0	7,003.0	6,908.3	58.6	23.9	91.21	2,182.0	253.7	332.6	255.3	77.25	4.305	
11,400.0	6,900.0	7,010.4	6,915.6	60.3	23.9	93.24	2,182.5	252.8	261.3	182.3	78.91	3.311	
11,500.0	6,900.0	7,017.4	6,922.6	62.0	23.9	95.22	2,182.9	252.0	214.0	133.5	80.53	2.657	
11,562.9	6,900.0	7,021.8	6,926.9	63.1	23.9	96.43	2,183.2	251.5	204.6	123.1	81.53	2.510 CC, ES, SF	
11,600.0	6,900.0	7,024.3	6,929.4	63.7	23.9	97.13	2,183.3	251.2	207.9	125.8	82.10	2.533	
11,696.7	6,900.0	7,030.7	6,935.7	65.4	24.0	98.91	2,183.7	250.4	244.3	160.8	83.57	2.924	

<b>Company:</b>	Synergy Resources	<b>Local Co-ordinate Reference:</b>	Well SRC Vista 11-2NHZ
<b>Project:</b>	SEC.2-T4N-R68W	<b>TVD Reference:</b>	WELL @ 5013.0ft (Original Well Elev)
<b>Reference Site:</b>	SRC Vista (N/S) Pad Sec.2-T4N-R68W	<b>MD Reference:</b>	WELL @ 5013.0ft (Original Well Elev)
<b>Site Error:</b>	0.0ft	<b>North Reference:</b>	True
<b>Reference Well:</b>	SRC Vista 11-2NHZ	<b>Survey Calculation Method:</b>	Minimum Curvature
<b>Well Error:</b>	0.0ft	<b>Output errors are at</b>	2.00 sigma
<b>Reference Wellbore</b>	Wellbore #1	<b>Database:</b>	Landmark
<b>Reference Design:</b>	Plan #1 (11-06-14)	<b>Offset TVD Reference:</b>	Offset Datum

<b>Offset Design</b>												<b>Offset Site Error:</b>	0.0 ft
SRC Avex 11-2D Pad Sec.2-T4N-R68W - SRC Avex 12-2D - Wellbore #1 - Wellbore #1												<b>Offset Well Error:</b>	0.0 ft
Survey Program: 158-MWD													
Reference		Offset		Semi Major Axis			Distance						
Measured Depth (ft)	Vertical Depth (ft)	Measured Depth (ft)	Vertical Depth (ft)	Reference (ft)	Offset (ft)	Highside Toolface (°)	Offset Wellbore Centre +N/-S (ft)	+E/-W (ft)	Between Centres (ft)	Between Ellipses (ft)	Minimum Separation (ft)	Separation Factor	Warning
9,400.0	6,900.0	7,126.8	7,033.3	34.5	24.2	137.23	967.7	342.4	975.6	931.1	44.43	21.959	
9,500.0	6,900.0	7,113.9	7,020.6	35.2	24.1	133.92	969.3	344.0	877.3	831.1	46.27	18.960	
9,600.0	6,900.0	7,101.2	7,008.1	36.1	24.1	130.36	970.8	345.6	779.4	731.1	48.22	16.161	
9,700.0	6,900.0	7,088.8	6,995.9	37.0	24.0	126.57	972.2	347.1	681.8	631.5	50.27	13.562	
9,800.0	6,900.0	7,076.6	6,983.9	38.0	24.0	122.56	973.6	348.5	584.7	532.4	52.39	11.162	
9,812.9	6,900.0	7,075.1	6,982.4	38.1	24.0	122.03	973.8	348.7	572.3	519.7	52.66	10.868	
9,900.0	6,900.0	7,064.9	6,972.4	38.8	23.9	114.64	974.9	350.0	489.2	434.0	55.15	8.871	
10,006.1	6,900.0	7,054.0	6,961.5	39.6	23.9	108.49	976.2	351.3	392.2	335.4	56.74	6.911	
10,100.0	6,900.0	7,045.1	6,952.8	40.5	23.9	105.77	977.2	352.4	312.3	254.2	58.06	5.379	
10,200.0	6,900.0	7,035.5	6,943.3	41.9	23.8	102.80	978.3	353.5	238.4	178.7	59.68	3.995	
10,300.0	6,900.0	7,025.7	6,933.7	43.2	23.8	99.74	979.4	354.8	189.6	128.3	61.29	3.093	
10,355.5	6,900.0	7,020.2	6,928.3	44.0	23.8	98.02	980.1	355.5	181.4	119.2	62.18	2.917	CC, ES, SF
10,400.0	6,900.0	7,015.8	6,923.9	44.6	23.7	96.62	980.6	356.0	186.7	123.8	62.87	2.970	
10,500.0	6,900.0	7,005.7	6,914.0	46.0	23.7	93.45	981.8	357.3	231.4	167.1	64.39	3.594	
10,600.0	6,900.0	6,995.4	6,903.8	47.5	23.7	90.26	983.0	358.7	303.4	237.6	65.85	4.608	
10,700.0	6,900.0	6,984.9	6,893.5	49.0	23.6	87.06	984.3	360.1	387.7	320.5	67.21	5.769	
10,800.0	6,900.0	6,974.3	6,883.0	50.6	23.6	83.88	985.5	361.5	477.9	409.4	68.48	6.979	
10,900.0	6,900.0	6,963.4	6,872.4	52.1	23.5	80.74	986.9	363.0	571.2	501.5	69.64	8.202	
11,000.0	6,900.0	6,952.4	6,861.5	53.7	23.5	77.65	988.2	364.5	666.2	595.5	70.68	9.426	
11,100.0	6,900.0	6,941.1	6,850.5	55.3	23.5	74.63	989.7	366.1	762.3	690.7	71.61	10.646	
11,200.0	6,900.0	6,930.0	6,839.6	57.0	23.4	71.79	991.1	367.6	859.2	786.8	72.45	11.859	
11,300.0	6,900.0	6,919.5	6,829.3	58.6	23.4	69.24	992.4	369.1	956.6	883.3	73.26	13.057	



SRC Vista (N/S) Pad Sec.2-T4N-R68W - SRC Vista 11-2CHZ - Wellbore #1 - Plan #1 (11-06-14)													Offset Site Error:	0.0 ft
Survey Program: 0-MWD													Offset Well Error:	0.0 ft
Reference		Offset		Semi Major Axis			Distance							
Measured Depth	Vertical Depth	Measured Depth	Vertical Depth	Reference	Offset	Highside Toolface	Offset Wellbore Centre		Between Centres	Between Ellipses	Minimum Separation	Separation Factor	Warning	
(ft)	(ft)	(ft)	(ft)	(ft)	(ft)	(°)	+N/-S (ft)	+E/-W (ft)	(ft)	(ft)	(ft)			
0.0	0.0	0.0	0.0	0.0	0.0	-180.00	-20.0	0.0	20.0					
100.0	100.0	100.0	100.0	0.1	0.1	-180.00	-20.0	0.0	20.0	19.8	0.22	89.146		
200.0	200.0	200.0	200.0	0.3	0.3	-180.00	-20.0	0.0	20.0	19.4	0.67	29.715		
300.0	300.0	300.0	300.0	0.6	0.6	-180.00	-20.0	0.0	20.0	18.9	1.12	17.829		
400.0	400.0	400.0	400.0	0.8	0.8	-180.00	-20.0	0.0	20.0	18.5	1.57	12.735		
500.0	500.0	500.0	500.0	1.0	1.0	-180.00	-20.0	0.0	20.0	18.0	2.02	9.905		
600.0	600.0	600.0	600.0	1.2	1.2	-180.00	-20.0	0.0	20.0	17.6	2.47	8.104		
700.0	700.0	700.0	700.0	1.5	1.5	-180.00	-20.0	0.0	20.0	17.1	2.92	6.857		
800.0	800.0	800.0	800.0	1.7	1.7	-180.00	-20.0	0.0	20.0	16.7	3.37	5.943		
900.0	900.0	900.0	900.0	1.9	1.9	-180.00	-20.0	0.0	20.0	16.2	3.82	5.244		
1,000.0	1,000.0	1,000.0	1,000.0	2.1	2.1	-180.00	-20.0	0.0	20.0	15.8	4.27	4.692		
1,100.0	1,100.0	1,100.0	1,100.0	2.4	2.4	-180.00	-20.0	0.0	20.0	15.3	4.72	4.245		
1,200.0	1,200.0	1,200.0	1,200.0	2.6	2.6	-180.00	-20.0	0.0	20.0	14.9	5.17	3.876		
1,300.0	1,300.0	1,300.0	1,300.0	2.8	2.8	-180.00	-20.0	0.0	20.0	14.4	5.62	3.566		
1,400.0	1,400.0	1,400.0	1,400.0	3.0	3.0	-180.00	-20.0	0.0	20.0	14.0	6.07	3.302		
1,500.0	1,500.0	1,500.0	1,500.0	3.3	3.3	-180.00	-20.0	0.0	20.0	13.5	6.52	3.074		
1,600.0	1,600.0	1,600.0	1,600.0	3.5	3.5	-180.00	-20.0	0.0	20.0	13.1	6.97	2.876		
1,700.0	1,700.0	1,700.0	1,700.0	3.7	3.7	-180.00	-20.0	0.0	20.0	12.6	7.42	2.701		
1,800.0	1,800.0	1,800.0	1,800.0	3.9	3.9	-180.00	-20.0	0.0	20.0	12.2	7.87	2.547 CC, ES		
1,900.0	1,900.0	1,899.3	1,899.3	4.2	4.1	179.23	-21.7	0.3	21.7	13.5	8.29	2.624		
2,000.0	2,000.0	1,998.3	1,998.2	4.4	4.3	177.51	-26.8	1.2	26.9	18.2	8.68	3.096		
2,100.0	2,100.0	2,097.0	2,096.5	4.6	4.5	0.60	-35.2	2.6	33.7	24.7	9.05	3.727		
2,200.0	2,199.8	2,195.5	2,194.3	4.8	4.7	-0.95	-46.9	4.6	40.5	31.2	9.39	4.319		
2,300.0	2,299.5	2,293.8	2,291.3	4.9	4.9	-2.41	-61.9	7.2	47.3	37.6	9.72	4.866		
2,400.0	2,398.7	2,391.8	2,387.6	5.1	5.1	-3.80	-80.1	10.3	54.0	44.0	10.06	5.373		
2,500.0	2,497.5	2,489.6	2,483.0	5.3	5.4	-5.16	-101.4	14.0	60.7	50.3	10.40	5.843		
2,600.0	2,595.6	2,587.2	2,577.3	5.6	5.7	-6.48	-126.0	18.2	67.4	56.7	10.74	6.278		
2,700.0	2,693.1	2,684.6	2,670.6	5.8	6.1	-7.78	-153.6	23.0	74.1	63.0	11.09	6.679		
2,800.0	2,789.6	2,781.7	2,762.6	6.2	6.5	-9.07	-184.2	28.3	80.7	69.2	11.45	7.046		
2,900.0	2,885.3	2,878.7	2,853.3	6.5	7.0	-10.34	-217.8	34.0	87.3	75.4	11.83	7.376		
3,000.0	2,979.8	2,975.4	2,942.7	7.0	7.6	-11.61	-254.3	40.3	93.8	81.6	12.23	7.669		
3,100.0	3,073.2	3,071.9	3,030.5	7.5	8.2	-12.86	-293.8	47.1	100.4	87.7	12.67	7.922		
3,200.0	3,165.2	3,168.2	3,116.8	8.0	8.9	-14.10	-336.0	54.4	106.9	93.7	13.14	8.131		
3,300.0	3,255.8	3,264.3	3,201.4	8.7	9.6	-15.33	-380.9	62.1	113.4	99.7	13.67	8.293		
3,400.0	3,344.9	3,362.3	3,286.2	9.4	10.4	-16.63	-429.2	70.4	119.4	105.2	14.27	8.371		
3,500.0	3,432.4	3,462.2	3,372.5	10.2	11.3	-18.29	-478.7	78.9	122.6	107.6	14.97	8.192		
3,600.0	3,518.1	3,562.0	3,458.8	11.0	12.2	-20.44	-528.3	87.5	122.6	106.8	15.81	7.754		
3,700.0	3,602.0	3,661.8	3,545.0	11.9	13.1	-23.24	-577.8	96.0	119.6	102.7	16.88	7.085		
3,784.7	3,671.5	3,746.2	3,617.9	12.8	13.9	-26.34	-619.6	103.2	114.8	96.8	18.05	6.361		
3,800.0	3,683.9	3,761.4	3,631.0	12.9	14.0	-26.96	-627.1	104.5	113.8	95.5	18.31	6.214		
3,900.0	3,765.1	3,860.8	3,717.0	13.9	15.0	-31.36	-676.5	113.0	107.4	87.2	20.23	5.311		
4,000.0	3,846.3	3,960.2	3,802.9	15.0	15.9	-36.27	-725.8	121.5	101.8	79.2	22.51	4.520		
4,100.0	3,927.5	4,059.7	3,888.8	16.0	16.8	-41.71	-775.1	130.0	96.9	71.7	25.18	3.849		
4,200.0	4,008.8	4,159.1	3,974.7	17.1	17.8	-47.65	-824.5	138.4	93.1	64.9	28.20	3.300		
4,300.0	4,090.0	4,258.5	4,060.6	18.1	18.7	-54.03	-873.8	146.9	90.3	58.8	31.49	2.868		
4,400.0	4,171.2	4,358.0	4,146.6	19.2	19.7	-60.71	-923.1	155.4	88.7	53.8	34.91	2.542		
4,475.2	4,232.2	4,432.7	4,211.1	20.0	20.4	-65.84	-960.2	161.8	88.4	50.9	37.47	2.359		
4,500.0	4,252.4	4,457.4	4,232.5	20.3	20.6	-67.54	-972.5	163.9	88.4	50.1	38.30	2.309		
4,600.0	4,333.6	4,556.8	4,318.4	21.4	21.6	-74.32	-1,021.8	172.4	89.4	47.9	41.51	2.153		
4,700.0	4,414.8	4,656.3	4,404.3	22.5	22.6	-80.87	-1,071.1	180.9	91.5	47.1	44.42	2.061		
4,800.0	4,496.0	4,755.7	4,490.2	23.6	23.5	-87.04	-1,120.4	189.4	94.9	47.9	46.97	2.020		
4,900.0	4,577.3	4,855.1	4,576.1	24.7	24.5	-92.74	-1,169.8	197.9	99.2	50.1	49.15	2.019		



SRC Vista (N/S) Pad Sec.2-T4N-R68W - SRC Vista 11-2CHZ - Wellbore #1 - Plan #1 (11-06-14)													Offset Site Error:	0.0 ft
Survey Program: 0-MWD													Offset Well Error:	0.0 ft
Reference		Offset		Semi Major Axis			Distance							
Measured Depth	Vertical Depth	Measured Depth	Vertical Depth	Reference	Offset	Highside Toolface	Offset Wellbore Centre		Between Centres	Between Ellipses	Minimum Separation	Separation Factor	Warning	
(ft)	(ft)	(ft)	(ft)	(ft)	(ft)	(°)	+N/-S (ft)	+E/-W (ft)	(ft)	(ft)	(ft)			
5,000.0	4,658.5	4,954.6	4,662.1	25.8	25.5	-97.92	-1,219.1	206.4	104.5	53.5	51.01	2.048		
5,100.0	4,739.7	5,054.0	4,748.0	26.9	26.4	-102.57	-1,268.4	214.9	110.5	57.9	52.60	2.101		
5,200.0	4,820.9	5,153.5	4,833.9	28.0	27.4	-106.72	-1,317.8	223.3	117.2	63.2	53.97	2.171		
5,300.0	4,902.1	5,252.9	4,919.8	29.2	28.4	-110.41	-1,367.1	231.8	124.4	69.2	55.18	2.254		
5,400.0	4,983.3	5,352.3	5,005.7	30.3	29.4	-113.68	-1,416.4	240.3	132.1	75.8	56.29	2.347		
5,500.0	5,064.5	5,451.8	5,091.6	31.4	30.3	-116.59	-1,465.8	248.8	140.1	82.8	57.31	2.445		
5,600.0	5,145.8	5,551.2	5,177.6	32.5	31.3	-119.17	-1,515.1	257.3	148.5	90.2	58.29	2.548		
5,700.0	5,227.0	5,650.6	5,263.5	33.6	32.3	-121.48	-1,564.4	265.8	157.2	98.0	59.24	2.654		
5,800.0	5,308.2	5,750.1	5,349.4	34.8	33.3	-123.54	-1,613.7	274.3	166.1	105.9	60.17	2.760		
5,900.0	5,389.4	5,849.5	5,435.3	35.9	34.3	-125.40	-1,663.1	282.8	175.2	114.1	61.09	2.867		
6,000.0	5,470.6	5,948.9	5,521.2	37.0	35.2	-127.07	-1,712.4	291.3	184.4	122.4	62.01	2.973		
6,100.0	5,551.8	6,048.4	5,607.2	38.1	36.2	-128.58	-1,761.7	299.7	193.8	130.8	62.94	3.079		
6,200.0	5,633.1	6,147.8	5,693.1	39.3	37.2	-129.94	-1,811.1	308.2	203.3	139.4	63.88	3.182		
6,300.0	5,714.3	6,247.2	5,779.0	40.4	38.2	-131.19	-1,860.4	316.7	212.9	148.1	64.83	3.284		
6,367.5	5,769.1	6,314.3	5,837.0	41.2	38.9	-131.97	-1,893.7	322.5	219.4	153.9	65.47	3.351		
6,400.0	5,795.9	6,346.7	5,865.0	41.5	39.2	-131.96	-1,909.8	325.2	222.0	156.2	65.85	3.372		
6,450.0	5,838.7	6,396.7	5,908.1	41.8	39.7	-131.18	-1,934.5	329.5	223.9	157.2	66.71	3.357		
6,500.0	5,883.2	6,446.6	5,951.2	42.2	40.2	-129.43	-1,959.3	333.7	223.3	155.3	67.95	3.285		
6,550.0	5,929.1	6,496.2	5,994.1	42.5	40.7	-126.53	-1,983.9	338.0	220.1	150.5	69.60	3.163		
6,600.0	5,976.3	6,545.3	6,036.5	42.7	41.1	-122.16	-2,008.2	342.2	214.7	143.0	71.66	2.996		
6,650.0	6,024.5	6,593.6	6,078.2	42.9	41.6	-115.68	-2,032.2	346.3	207.3	133.2	74.14	2.796		
6,700.0	6,073.5	6,640.9	6,119.1	43.1	42.1	-105.54	-2,055.7	350.3	198.4	121.4	77.00	2.577		
6,750.0	6,123.1	6,686.1	6,158.2	43.2	42.5	-86.94	-2,078.1	354.2	188.7	108.7	80.03	2.358		
6,800.0	6,172.9	6,726.2	6,193.6	43.3	42.8	-41.19	-2,096.7	357.7	179.9	97.4	82.52	2.180		
6,850.0	6,222.8	6,767.3	6,230.7	43.3	43.1	24.29	-2,113.7	361.3	173.0	88.4	84.56	2.045		
6,900.0	6,272.5	6,809.2	6,269.7	43.2	43.3	52.93	-2,128.8	365.2	168.4	82.5	85.92	1.960		
6,950.0	6,321.8	6,852.2	6,310.4	43.2	43.5	68.07	-2,141.8	369.1	166.6	80.2	86.39	1.929 SF		
6,954.8	6,326.6	6,856.3	6,314.4	43.2	43.5	69.26	-2,143.0	369.5	166.6	80.2	86.38	1.929		
7,000.0	6,370.5	6,896.3	6,352.9	43.0	43.7	79.11	-2,152.7	373.3	167.9	82.0	85.84	1.956		
7,050.0	6,418.2	6,941.7	6,397.3	42.9	43.8	88.31	-2,161.1	377.6	172.2	88.0	84.27	2.044		
7,100.0	6,464.8	6,988.5	6,443.6	42.7	43.9	96.34	-2,166.7	382.0	179.6	97.8	81.83	2.195		
7,150.0	6,510.0	7,037.0	6,491.8	42.4	44.0	103.43	-2,169.4	386.7	189.6	110.9	78.72	2.409		
7,200.0	6,553.6	7,087.2	6,541.8	42.2	44.0	109.71	-2,168.7	391.5	201.9	126.7	75.18	2.685		
7,250.0	6,595.5	7,139.5	6,593.6	41.8	44.0	115.23	-2,164.2	396.5	216.0	144.6	71.44	3.023		
7,300.0	6,635.3	7,194.0	6,647.2	41.5	44.0	120.09	-2,155.5	401.6	231.5	163.8	67.66	3.421		
7,350.0	6,672.9	7,251.1	6,702.4	41.1	43.8	124.34	-2,142.1	406.8	247.9	183.9	63.97	3.875		
7,400.0	6,708.2	7,310.9	6,758.9	40.7	43.6	128.06	-2,123.3	412.1	264.9	204.4	60.46	4.380		
7,450.0	6,740.9	7,373.9	6,816.5	40.3	43.4	131.32	-2,098.4	417.6	282.0	224.8	57.21	4.929		
7,500.0	6,770.9	7,440.2	6,874.6	39.9	43.0	134.17	-2,066.9	423.0	299.0	244.7	54.26	5.510		
7,550.0	6,798.1	7,510.2	6,932.4	39.4	42.6	136.65	-2,027.9	428.4	315.4	263.8	51.66	6.106		
7,600.0	6,822.3	7,584.1	6,989.1	38.9	42.1	138.79	-1,980.9	433.6	331.0	281.5	49.44	6.695		
7,650.0	6,843.3	7,662.0	7,043.2	38.5	41.5	140.62	-1,925.1	438.5	345.3	297.7	47.63	7.249		
7,700.0	6,861.2	7,743.9	7,093.4	38.0	40.8	142.16	-1,860.6	443.1	358.1	311.8	46.28	7.738		
7,750.0	6,875.8	7,829.7	7,137.7	37.5	40.1	143.40	-1,787.2	447.0	369.0	323.6	45.39	8.129		
7,800.0	6,886.9	7,919.0	7,174.1	37.1	39.3	144.36	-1,705.8	450.1	377.7	332.7	44.98	8.397		
7,850.0	6,894.7	8,011.1	7,200.9	36.6	38.4	145.02	-1,617.8	452.2	383.9	338.9	45.02	8.527		
7,900.0	6,899.0	8,105.2	7,216.4	36.2	37.6	145.40	-1,525.0	453.3	387.5	342.0	45.49	8.518		
7,937.1	6,900.0	8,175.6	7,220.0	35.9	37.1	145.49	-1,454.8	453.3	388.3	342.3	46.08	8.428		
8,000.0	6,900.0	8,239.4	7,220.0	35.4	36.6	145.49	-1,391.0	453.0	388.3	342.5	45.88	8.464		
8,100.0	6,900.0	8,339.4	7,220.0	34.6	35.8	145.49	-1,291.0	452.5	388.3	342.7	45.67	8.504		
8,200.0	6,900.0	8,439.4	7,220.0	34.0	35.2	145.49	-1,191.0	452.1	388.3	342.7	45.59	8.518		
8,300.0	6,900.0	8,539.4	7,220.0	33.4	34.7	145.49	-1,091.0	451.6	388.3	342.7	45.65	8.507		

<b>Company:</b>	Synergy Resources	<b>Local Co-ordinate Reference:</b>	Well SRC Vista 11-2NHZ
<b>Project:</b>	SEC.2-T4N-R68W	<b>TVD Reference:</b>	WELL @ 5013.0ft (Original Well Elev)
<b>Reference Site:</b>	SRC Vista (N/S) Pad Sec.2-T4N-R68W	<b>MD Reference:</b>	WELL @ 5013.0ft (Original Well Elev)
<b>Site Error:</b>	0.0ft	<b>North Reference:</b>	True
<b>Reference Well:</b>	SRC Vista 11-2NHZ	<b>Survey Calculation Method:</b>	Minimum Curvature
<b>Well Error:</b>	0.0ft	<b>Output errors are at</b>	2.00 sigma
<b>Reference Wellbore</b>	Wellbore #1	<b>Database:</b>	Landmark
<b>Reference Design:</b>	Plan #1 (11-06-14)	<b>Offset TVD Reference:</b>	Offset Datum

Offset Design		SRC Vista (N/S) Pad Sec.2-T4N-R68W - SRC Vista 11-2CHZ - Wellbore #1 - Plan #1 (11-06-14)											Offset Site Error: 0.0 ft	
Survey Program: 0-MWD													Offset Well Error: 0.0 ft	
Reference		Offset		Semi Major Axis			Distance							Warning
Measured Depth (ft)	Vertical Depth (ft)	Measured Depth (ft)	Vertical Depth (ft)	Reference (ft)	Offset (ft)	Highside Toolface (°)	Offset Wellbore Centre +N/-S (ft)	+E/-W (ft)	Between Centres (ft)	Between Ellipses (ft)	Minimum Separation (ft)	Separation Factor		
8,400.0	6,900.0	8,639.4	7,220.0	32.9	34.2	145.49	-991.0	451.1	388.3	342.5	45.84	8.471		
8,500.0	6,900.0	8,739.4	7,220.0	32.6	33.9	145.49	-891.0	450.7	388.3	342.2	46.17	8.411		
8,600.0	6,900.0	8,839.4	7,220.0	32.4	33.6	145.49	-791.0	450.2	388.3	341.7	46.63	8.329		
8,700.0	6,900.0	8,939.4	7,220.0	32.2	33.5	145.49	-691.0	449.7	388.3	341.1	47.21	8.226		
8,800.0	6,900.0	9,039.4	7,220.0	32.2	33.5	145.49	-591.0	449.2	388.3	340.4	47.92	8.104		
8,900.0	6,900.0	9,139.4	7,220.0	32.3	33.5	145.49	-491.0	448.8	388.3	339.6	48.74	7.967		
9,000.0	6,900.0	9,239.4	7,220.0	32.5	33.8	145.49	-391.0	448.3	388.3	338.7	49.68	7.817		
9,100.0	6,900.0	9,339.4	7,220.0	32.9	34.1	145.49	-291.0	447.8	388.3	337.6	50.72	7.657		
9,200.0	6,900.0	9,439.4	7,220.0	33.3	34.5	145.49	-191.0	447.4	388.3	336.5	51.85	7.489		
9,300.0	6,900.0	9,539.4	7,220.0	33.9	35.0	145.49	-91.0	446.9	388.3	335.2	53.08	7.315		
9,400.0	6,900.0	9,639.4	7,220.0	34.5	35.7	145.49	9.0	446.4	388.3	333.9	54.40	7.138		
9,500.0	6,900.0	9,739.4	7,220.0	35.2	36.4	145.49	109.0	445.9	388.3	332.5	55.80	6.960		
9,600.0	6,900.0	9,839.4	7,220.0	36.1	37.2	145.49	209.0	445.5	388.3	331.1	57.27	6.781		
9,700.0	6,900.0	9,939.4	7,220.0	37.0	38.1	145.49	309.0	445.0	388.3	329.5	58.81	6.603		
9,800.0	6,900.0	10,039.4	7,220.0	38.0	39.1	145.49	409.0	444.5	388.3	327.9	60.41	6.428		
9,812.9	6,900.0	10,052.2	7,220.0	38.1	39.3	145.49	421.8	444.5	388.3	327.7	60.62	6.406		
9,900.0	6,900.0	10,150.5	7,220.0	38.8	40.0	145.51	520.1	441.6	388.2	325.9	62.37	6.225		
10,005.3	6,900.0	10,266.8	7,220.0	39.6	40.9	145.61	635.9	431.7	387.8	323.5	64.30	6.031		
10,006.1	6,900.0	10,267.6	7,220.0	39.6	40.9	145.61	636.7	431.6	387.8	323.5	64.32	6.029		
10,100.0	6,900.0	10,361.5	7,220.0	40.5	42.0	145.60	730.1	421.7	387.8	321.9	65.91	5.884		
10,200.0	6,900.0	10,461.5	7,220.0	41.9	43.4	145.60	829.5	411.2	387.8	320.1	67.76	5.724		
10,300.0	6,900.0	10,561.5	7,220.0	43.2	44.7	145.59	929.0	400.7	387.9	318.2	69.65	5.568		
10,400.0	6,900.0	10,661.5	7,220.0	44.6	46.1	145.59	1,028.4	390.1	387.9	316.3	71.59	5.418		
10,500.0	6,900.0	10,761.5	7,220.0	46.0	47.5	145.58	1,127.9	379.6	387.9	314.3	73.56	5.273		
10,600.0	6,900.0	10,861.5	7,220.0	47.5	49.0	145.58	1,227.3	369.1	387.9	312.4	75.56	5.134		
10,700.0	6,900.0	10,961.5	7,220.0	49.0	50.5	145.57	1,326.8	358.6	387.9	310.3	77.60	4.999		
10,800.0	6,900.0	11,061.5	7,220.0	50.6	52.0	145.57	1,426.2	348.0	388.0	308.3	79.67	4.870		
10,900.0	6,900.0	11,161.5	7,220.0	52.1	53.6	145.56	1,525.6	337.5	388.0	306.2	81.76	4.746		
11,000.0	6,900.0	11,261.5	7,220.0	53.7	55.2	145.56	1,625.1	327.0	388.0	304.1	83.87	4.626		
11,100.0	6,900.0	11,361.5	7,220.0	55.3	56.8	145.55	1,724.5	316.5	388.0	302.0	86.01	4.511		
11,200.0	6,900.0	11,461.5	7,220.0	57.0	58.4	145.55	1,824.0	305.9	388.1	299.9	88.17	4.401		
11,300.0	6,900.0	11,561.5	7,220.0	58.6	60.1	145.54	1,923.4	295.4	388.1	297.7	90.35	4.295		
11,400.0	6,900.0	11,661.5	7,220.0	60.3	61.7	145.54	2,022.9	284.9	388.1	295.6	92.55	4.193		
11,500.0	6,900.0	11,761.5	7,220.0	62.0	63.4	145.53	2,122.3	274.3	388.1	293.4	94.77	4.096		
11,600.0	6,900.0	11,861.5	7,220.0	63.7	65.1	145.53	2,221.8	263.8	388.2	291.2	97.00	4.002		
11,648.0	6,900.0	11,909.5	7,220.0	64.5	66.0	145.53	2,269.5	258.8	388.2	290.1	98.08	3.958		
11,696.7	6,900.0	11,934.2	7,220.0	65.4	66.4	145.53	2,294.1	256.2	388.9	290.0	98.90	3.932		

<b>Company:</b>	Synergy Resources	<b>Local Co-ordinate Reference:</b>	Well SRC Vista 11-2NHZ
<b>Project:</b>	SEC.2-T4N-R68W	<b>TVD Reference:</b>	WELL @ 5013.0ft (Original Well Elev)
<b>Reference Site:</b>	SRC Vista (N/S) Pad Sec.2-T4N-R68W	<b>MD Reference:</b>	WELL @ 5013.0ft (Original Well Elev)
<b>Site Error:</b>	0.0ft	<b>North Reference:</b>	True
<b>Reference Well:</b>	SRC Vista 11-2NHZ	<b>Survey Calculation Method:</b>	Minimum Curvature
<b>Well Error:</b>	0.0ft	<b>Output errors are at</b>	2.00 sigma
<b>Reference Wellbore</b>	Wellbore #1	<b>Database:</b>	Landmark
<b>Reference Design:</b>	Plan #1 (11-06-14)	<b>Offset TVD Reference:</b>	Offset Datum

Offset Design SRC Vista (N/S) Pad Sec.2-T4N-R68W - SRC Vista 12-2CHZ - Wellbore #1 - Plan #1 (11-07-14)													Offset Site Error:	0.0 ft
Survey Program: 0-MWD													Offset Well Error:	0.0 ft
Reference	Offset	Semi Major Axis		Distance										Warning
Measured Depth (ft)	Vertical Depth (ft)	Measured Depth (ft)	Vertical Depth (ft)	Reference (ft)	Offset (ft)	Highside Toolface (°)	Offset Wellbore Centre +N/-S (ft)	+E/-W (ft)	Between Centres (ft)	Between Ellipses (ft)	Minimum Separation (ft)	Separation Factor		
0.0	0.0	0.0	0.0	0.0	0.0	-180.00	-59.7	0.0	59.7					
100.0	100.0	100.0	100.0	0.1	0.1	-180.00	-59.7	0.0	59.7	59.5	0.22	265.799		
200.0	200.0	200.0	200.0	0.3	0.3	-180.00	-59.7	0.0	59.7	59.1	0.67	88.600		
300.0	300.0	300.0	300.0	0.6	0.6	-180.00	-59.7	0.0	59.7	58.6	1.12	53.160		
400.0	400.0	400.0	400.0	0.8	0.8	-180.00	-59.7	0.0	59.7	58.2	1.57	37.971		
500.0	500.0	500.0	500.0	1.0	1.0	-180.00	-59.7	0.0	59.7	57.7	2.02	29.533		
600.0	600.0	600.0	600.0	1.2	1.2	-180.00	-59.7	0.0	59.7	57.3	2.47	24.164		
700.0	700.0	700.0	700.0	1.5	1.5	-180.00	-59.7	0.0	59.7	56.8	2.92	20.446		
800.0	800.0	800.0	800.0	1.7	1.7	-180.00	-59.7	0.0	59.7	56.4	3.37	17.720		
900.0	900.0	900.0	900.0	1.9	1.9	-180.00	-59.7	0.0	59.7	55.9	3.82	15.635		
1,000.0	1,000.0	1,000.0	1,000.0	2.1	2.1	-180.00	-59.7	0.0	59.7	55.5	4.27	13.989		
1,100.0	1,100.0	1,100.0	1,100.0	2.4	2.4	-180.00	-59.7	0.0	59.7	55.0	4.72	12.657		
1,200.0	1,200.0	1,200.0	1,200.0	2.6	2.6	-180.00	-59.7	0.0	59.7	54.6	5.17	11.556		
1,300.0	1,300.0	1,300.0	1,300.0	2.8	2.8	-180.00	-59.7	0.0	59.7	54.1	5.62	10.632		
1,400.0	1,400.0	1,400.0	1,400.0	3.0	3.0	-180.00	-59.7	0.0	59.7	53.7	6.07	9.844 CC, ES		
1,500.0	1,500.0	1,498.0	1,498.0	3.3	3.2	179.48	-61.3	0.6	61.4	54.9	6.49	9.459		
1,600.0	1,600.0	1,595.8	1,595.7	3.5	3.4	178.06	-66.1	2.2	66.2	59.3	6.89	9.619		
1,700.0	1,700.0	1,693.2	1,692.7	3.7	3.6	176.13	-73.9	5.0	74.4	67.1	7.29	10.206		
1,800.0	1,800.0	1,789.9	1,788.7	3.9	3.8	174.05	-84.7	8.8	85.9	78.2	7.70	11.158		
1,900.0	1,900.0	1,885.7	1,883.3	4.2	4.0	172.08	-98.5	13.7	100.8	92.7	8.12	12.417		
2,000.0	2,000.0	1,980.4	1,976.4	4.4	4.2	170.35	-115.0	19.5	119.0	110.4	8.54	13.934		
2,100.0	2,100.0	2,074.2	2,067.9	4.6	4.5	-6.32	-134.2	26.3	138.8	129.8	8.92	15.552		
2,200.0	2,199.8	2,167.3	2,158.2	4.8	4.9	-7.72	-156.0	34.1	158.4	149.1	9.28	17.064		
2,300.0	2,299.5	2,259.9	2,247.1	4.9	5.2	-9.04	-180.5	42.7	177.9	168.2	9.65	18.442		
2,400.0	2,398.7	2,351.9	2,334.5	5.1	5.7	-10.32	-207.5	52.3	197.2	187.2	10.01	19.703		
2,500.0	2,497.5	2,443.3	2,420.4	5.3	6.2	-11.56	-236.9	62.7	216.5	206.1	10.38	20.848		
2,600.0	2,595.6	2,534.2	2,504.8	5.6	6.7	-12.77	-268.6	73.9	235.6	224.8	10.77	21.884		
2,700.0	2,693.1	2,624.5	2,587.5	5.8	7.3	-13.95	-302.7	86.0	254.6	243.5	11.16	22.813		
2,800.0	2,789.6	2,714.2	2,668.6	6.2	8.0	-15.10	-339.0	98.8	273.5	262.0	11.57	23.635		
2,900.0	2,885.3	2,804.7	2,749.1	6.5	8.7	-16.26	-377.9	112.6	292.3	280.3	12.02	24.328		
3,000.0	2,979.8	2,903.1	2,836.1	7.0	9.5	-17.54	-421.2	127.9	309.0	296.5	12.51	24.707		
3,100.0	3,073.2	3,001.8	2,923.5	7.5	10.3	-18.90	-464.6	143.2	322.7	309.6	13.05	24.732		
3,200.0	3,165.2	3,100.9	3,011.1	8.0	11.2	-20.36	-508.1	158.7	333.2	319.6	13.64	24.427		
3,300.0	3,255.8	3,200.1	3,098.9	8.7	12.1	-21.95	-551.8	174.1	340.8	326.5	14.31	23.815		
3,400.0	3,344.9	3,299.4	3,186.7	9.4	12.9	-23.72	-595.4	189.5	345.5	330.4	15.07	22.918		
3,500.0	3,432.4	3,398.6	3,274.5	10.2	13.8	-25.70	-639.0	205.0	347.3	331.3	15.96	21.761		
3,600.0	3,518.1	3,497.7	3,362.1	11.0	14.7	-27.94	-682.6	220.4	346.5	329.5	17.00	20.376		
3,700.0	3,602.0	3,596.4	3,449.5	11.9	15.6	-30.50	-726.0	235.7	343.2	324.9	18.25	18.801		
3,784.7	3,671.5	3,679.8	3,523.2	12.8	16.4	-32.95	-762.6	248.7	338.6	319.1	19.51	17.357		
3,800.0	3,683.9	3,694.8	3,536.5	12.9	16.5	-33.41	-769.2	251.0	337.7	317.9	19.77	17.082		
3,900.0	3,765.1	3,792.9	3,623.3	13.9	17.4	-36.48	-812.4	266.3	332.1	310.5	21.57	15.398		
4,000.0	3,846.3	3,891.1	3,710.1	15.0	18.3	-39.65	-855.6	281.6	327.5	303.9	23.55	13.905		
4,100.0	3,927.5	3,989.3	3,797.0	16.0	19.2	-42.89	-898.7	296.9	324.0	298.2	25.72	12.598		
4,200.0	4,008.8	4,087.4	3,883.8	17.1	20.1	-46.19	-941.9	312.1	321.5	293.5	28.04	11.466		
4,300.0	4,090.0	4,185.6	3,970.6	18.1	21.0	-49.52	-985.0	327.4	320.2	289.7	30.51	10.497		
4,365.9	4,143.5	4,250.3	4,027.9	18.9	21.6	-51.73	-1,013.5	337.5	320.0	287.8	32.20	9.938		
4,400.0	4,171.2	4,283.8	4,057.5	19.2	21.9	-52.87	-1,028.2	342.7	320.0	286.9	33.09	9.673		
4,500.0	4,252.4	4,381.9	4,144.3	20.3	22.9	-56.22	-1,071.3	357.9	321.0	285.2	35.75	8.978		
4,600.0	4,333.6	4,480.1	4,231.2	21.4	23.8	-59.53	-1,114.5	373.2	323.1	284.6	38.48	8.396		
4,700.0	4,414.8	4,578.3	4,318.0	22.5	24.7	-62.79	-1,157.7	388.5	326.2	285.0	41.24	7.912		
4,800.0	4,496.0	4,676.4	4,404.8	23.6	25.6	-65.98	-1,200.8	403.8	330.5	286.5	44.00	7.512		
4,900.0	4,577.3	4,774.6	4,491.7	24.7	26.5	-69.08	-1,244.0	419.0	335.8	289.0	46.74	7.184		

CC - Min centre to center distance or convergent point, SF - min separation factor, ES - min ellipse separation

<b>Company:</b>	Synergy Resources	<b>Local Co-ordinate Reference:</b>	Well SRC Vista 11-2NHZ
<b>Project:</b>	SEC.2-T4N-R68W	<b>TVD Reference:</b>	WELL @ 5013.0ft (Original Well Elev)
<b>Reference Site:</b>	SRC Vista (N/S) Pad Sec.2-T4N-R68W	<b>MD Reference:</b>	WELL @ 5013.0ft (Original Well Elev)
<b>Site Error:</b>	0.0ft	<b>North Reference:</b>	True
<b>Reference Well:</b>	SRC Vista 11-2NHZ	<b>Survey Calculation Method:</b>	Minimum Curvature
<b>Well Error:</b>	0.0ft	<b>Output errors are at</b>	2.00 sigma
<b>Reference Wellbore</b>	Wellbore #1	<b>Database:</b>	Landmark
<b>Reference Design:</b>	Plan #1 (11-06-14)	<b>Offset TVD Reference:</b>	Offset Datum

Offset Design													Offset Site Error:	0.0 ft
Survey Program: 0-MWD													Offset Well Error:	0.0 ft
Reference		Offset		Semi Major Axis			Distance							Warning
Measured Depth (ft)	Vertical Depth (ft)	Measured Depth (ft)	Vertical Depth (ft)	Reference (ft)	Offset (ft)	Highside Toolface (°)	Offset Wellbore Centre +N/-S (ft)	+E/-W (ft)	Between Centres (ft)	Between Ellipses (ft)	Minimum Separation (ft)	Separation Factor		
5,000.0	4,658.5	4,872.8	4,578.5	25.8	27.4	-72.08	-1,287.1	434.3	342.1	292.6	49.45	6.917		
5,100.0	4,739.7	4,970.9	4,665.3	26.9	28.4	-74.97	-1,330.3	449.6	349.3	297.1	52.11	6.702		
5,200.0	4,820.9	5,069.1	4,752.2	28.0	29.3	-77.74	-1,373.5	464.8	357.3	302.6	54.71	6.532		
5,300.0	4,902.1	5,167.3	4,839.0	29.2	30.2	-80.39	-1,416.6	480.1	366.2	309.0	57.24	6.398		
5,400.0	4,983.3	5,265.4	4,925.8	30.3	31.1	-82.90	-1,459.8	495.4	375.9	316.2	59.70	6.296		
5,500.0	5,064.5	5,363.6	5,012.7	31.4	32.0	-85.29	-1,502.9	510.7	386.2	324.1	62.08	6.221		
5,600.0	5,145.8	5,461.7	5,099.5	32.5	33.0	-87.56	-1,546.1	525.9	397.2	332.8	64.40	6.168		
5,700.0	5,227.0	5,559.9	5,186.3	33.6	33.9	-89.70	-1,589.2	541.2	408.8	342.1	66.64	6.134		
5,800.0	5,308.2	5,658.1	5,273.2	34.8	34.8	-91.73	-1,632.4	556.5	420.9	352.1	68.82	6.116		
5,900.0	5,389.4	5,756.2	5,360.0	35.9	35.7	-93.64	-1,675.6	571.7	433.5	362.6	70.94	6.112		
6,000.0	5,470.6	5,854.4	5,446.9	37.0	36.7	-95.44	-1,718.7	587.0	446.6	373.6	73.00	6.118		
6,100.0	5,551.8	5,952.6	5,533.7	38.1	37.6	-97.14	-1,761.9	602.3	460.1	385.1	75.01	6.135		
6,200.0	5,633.1	6,050.7	5,620.5	39.3	38.5	-98.75	-1,805.0	617.6	474.0	397.1	76.96	6.159		
6,300.0	5,714.3	6,148.9	5,707.4	40.4	39.4	-100.26	-1,848.2	632.8	488.3	409.4	78.88	6.190		
6,367.5	5,769.1	6,215.2	5,766.0	41.2	40.0	-101.24	-1,877.3	643.1	498.1	417.9	80.15	6.214		
6,400.0	5,795.9	6,247.2	5,794.3	41.5	40.3	-101.58	-1,891.4	648.1	502.6	421.9	80.74	6.225		
6,450.0	5,838.7	6,296.7	5,838.1	41.8	40.8	-101.58	-1,913.2	655.8	508.8	427.2	81.58	6.237		
6,500.0	5,883.2	6,346.5	5,882.1	42.2	41.3	-100.87	-1,935.0	663.6	513.8	431.4	82.41	6.235		
6,550.0	5,929.1	6,396.1	5,926.0	42.5	41.8	-99.33	-1,956.9	671.3	517.8	434.6	83.24	6.221		
6,600.0	5,976.3	6,445.4	5,969.7	42.7	42.2	-96.73	-1,978.6	678.9	520.8	436.7	84.05	6.196		
6,650.0	6,024.5	6,494.2	6,012.8	42.9	42.7	-92.53	-2,000.0	686.5	522.9	438.1	84.81	6.165		
6,700.0	6,073.5	6,542.1	6,055.2	43.1	43.1	-85.32	-2,021.1	694.0	524.2	438.7	85.51	6.131		
6,750.0	6,123.1	6,589.1	6,096.7	43.2	43.6	-70.36	-2,041.7	701.3	525.1	439.0	86.11	6.098		
6,800.0	6,172.9	6,634.7	6,137.1	43.3	44.0	-28.20	-2,061.8	708.4	525.9	439.3	86.60	6.073		
6,850.0	6,222.8	6,678.9	6,176.2	43.3	44.4	33.37	-2,081.2	715.3	526.8	439.9	86.93	6.061		
6,900.0	6,272.5	6,720.3	6,212.9	43.2	44.8	57.75	-2,099.4	721.7	528.4	441.3	87.08	6.068		
6,950.0	6,321.8	6,759.0	6,247.7	43.2	45.1	68.19	-2,114.9	727.8	531.1	444.1	87.02	6.103		
7,000.0	6,370.5	6,798.6	6,284.3	43.0	45.3	74.45	-2,128.8	734.3	535.1	448.3	86.80	6.165		
7,050.0	6,418.2	6,839.4	6,322.7	42.9	45.5	78.97	-2,141.0	741.0	540.5	454.0	86.44	6.253		
7,100.0	6,464.8	6,881.6	6,362.9	42.7	45.7	82.62	-2,151.2	748.0	547.2	461.2	85.95	6.366		
7,150.0	6,510.0	6,925.3	6,405.2	42.4	45.9	85.76	-2,159.2	755.4	555.3	469.9	85.35	6.506		
7,200.0	6,553.6	6,970.7	6,449.7	42.2	46.0	88.57	-2,164.8	763.1	564.7	480.0	84.63	6.672		
7,250.0	6,595.5	7,018.3	6,496.4	41.8	46.1	91.16	-2,167.5	771.2	575.3	491.5	83.80	6.865		
7,300.0	6,635.3	7,068.2	6,545.6	41.5	46.2	93.58	-2,167.0	779.8	587.1	504.2	82.87	7.084		
7,350.0	6,672.9	7,121.0	6,597.5	41.1	46.2	95.90	-2,162.7	788.7	599.9	518.0	81.82	7.331		
7,400.0	6,708.2	7,177.1	6,652.1	40.7	46.1	98.13	-2,153.8	798.2	613.5	532.9	80.66	7.606		
7,450.0	6,740.9	7,237.1	6,709.5	40.3	46.0	100.30	-2,139.6	808.0	627.9	548.5	79.40	7.907		
7,500.0	6,770.9	7,301.8	6,769.8	39.9	45.9	102.44	-2,118.9	818.4	642.6	564.6	78.03	8.236		
7,550.0	6,798.1	7,371.7	6,832.8	39.4	45.6	104.55	-2,090.4	829.2	657.5	581.0	76.53	8.592		
7,600.0	6,822.3	7,448.0	6,897.9	38.9	45.2	106.63	-2,052.4	840.3	672.3	597.4	74.95	8.970		
7,650.0	6,843.3	7,531.3	6,964.0	38.5	44.8	108.66	-2,003.1	851.5	686.5	613.2	73.27	9.369		
7,700.0	6,861.2	7,622.6	7,029.5	38.0	44.1	110.59	-1,940.5	862.6	699.7	628.2	71.56	9.778		
7,750.0	6,875.8	7,722.3	7,091.5	37.5	43.4	112.36	-1,863.2	872.9	711.4	641.6	69.88	10.181		
7,800.0	6,886.9	7,830.5	7,146.0	37.1	42.5	113.87	-1,770.3	881.9	721.1	652.8	68.32	10.555		
7,850.0	6,894.7	7,946.2	7,188.4	36.6	41.6	115.02	-1,662.9	888.8	728.3	661.3	67.00	10.870		
7,900.0	6,899.0	8,067.6	7,213.9	36.2	40.6	115.70	-1,544.5	892.6	732.4	666.4	66.02	11.095		
7,937.1	6,900.0	8,159.4	7,220.0	35.9	39.9	115.87	-1,453.0	893.2	733.4	667.9	65.54	11.190		
8,000.0	6,900.0	8,223.6	7,220.0	35.4	39.4	115.87	-1,388.8	892.9	733.4	668.7	64.72	11.333		
8,100.0	6,900.0	8,323.6	7,220.0	34.6	38.7	115.87	-1,288.8	892.4	733.4	669.9	63.52	11.546		
8,200.0	6,900.0	8,423.6	7,220.0	34.0	38.0	115.87	-1,188.8	891.9	733.4	670.9	62.50	11.734		
8,300.0	6,900.0	8,523.6	7,220.0	33.4	37.4	115.87	-1,088.8	891.4	733.3	671.7	61.66	11.892		
8,400.0	6,900.0	8,623.6	7,220.0	32.9	36.9	115.87	-988.8	890.9	733.3	672.3	61.02	12.018		

CC - Min centre to center distance or convergent point, SF - min separation factor, ES - min ellipse separation

SRC Vista (N/S) Pad Sec.2-T4N-R68W - SRC Vista 12-2CHZ - Wellbore #1 - Plan #1 (11-07-14)												Offset Site Error:	0.0 ft
Survey Program: 0-MWD												Offset Well Error:	0.0 ft
Reference		Offset		Semi Major Axis			Distance						Warning
Measured Depth (ft)	Vertical Depth (ft)	Measured Depth (ft)	Vertical Depth (ft)	Reference (ft)	Offset (ft)	Highside Toolface (°)	Offset Wellbore Centre +N/-S (ft)	+E/-W (ft)	Between Centres (ft)	Between Ellipses (ft)	Minimum Separation (ft)	Separation Factor	
8,500.0	6,900.0	8,723.6	7,220.0	32.6	36.5	115.87	-888.8	890.4	733.3	672.7	60.57	12.106	
8,600.0	6,900.0	8,823.6	7,220.0	32.4	36.1	115.87	-788.8	890.0	733.3	673.0	60.33	12.155	
8,700.0	6,900.0	8,923.6	7,220.0	32.2	35.9	115.87	-688.8	889.5	733.3	673.0	60.29	12.163	
8,800.0	6,900.0	9,023.6	7,220.0	32.2	35.7	115.87	-588.8	889.0	733.3	672.8	60.45	12.130	
8,900.0	6,900.0	9,123.6	7,220.0	32.3	35.7	115.88	-488.8	888.5	733.2	672.4	60.82	12.056	
9,000.0	6,900.0	9,223.6	7,220.0	32.5	35.7	115.88	-388.8	888.0	733.2	671.8	61.39	11.945	
9,100.0	6,900.0	9,323.6	7,220.0	32.9	35.9	115.88	-288.8	887.5	733.2	671.1	62.15	11.798	
9,200.0	6,900.0	9,423.6	7,220.0	33.3	36.2	115.88	-188.8	887.0	733.2	670.1	63.09	11.621	
9,300.0	6,900.0	9,523.6	7,220.0	33.9	36.7	115.88	-88.8	886.5	733.2	669.0	64.22	11.416	
9,400.0	6,900.0	9,623.6	7,220.0	34.5	37.2	115.88	11.2	886.0	733.2	667.6	65.52	11.190	
9,500.0	6,900.0	9,723.6	7,220.0	35.2	37.9	115.88	111.2	885.5	733.1	666.2	66.97	10.947	
9,600.0	6,900.0	9,823.6	7,220.0	36.1	38.7	115.88	211.2	885.1	733.1	664.5	68.58	10.690	
9,700.0	6,900.0	9,923.6	7,220.0	37.0	39.6	115.88	311.2	884.6	733.1	662.8	70.32	10.425	
9,800.0	6,900.0	10,023.6	7,220.0	38.0	40.5	115.88	411.2	884.1	733.1	660.9	72.19	10.155	
9,812.9	6,900.0	10,036.4	7,220.0	38.1	40.7	115.88	424.0	884.0	733.1	660.6	72.44	10.120	
9,900.0	6,900.0	10,167.2	7,220.0	38.8	41.8	115.91	554.7	879.2	732.4	658.0	74.40	9.844	
10,002.8	6,900.0	10,291.7	7,220.0	39.6	42.9	115.98	678.6	867.3	730.5	654.3	76.26	9.579	
10,006.1	6,900.0	10,295.0	7,220.0	39.6	43.0	115.98	681.9	866.9	730.5	654.2	76.32	9.572	
10,100.0	6,900.0	10,389.0	7,220.0	40.5	44.2	115.97	775.3	857.2	730.7	652.4	78.30	9.332	
10,200.0	6,900.0	10,489.0	7,220.0	41.9	45.5	115.97	874.8	846.8	730.8	650.1	80.70	9.056	
10,300.0	6,900.0	10,589.0	7,220.0	43.2	46.9	115.96	974.2	836.4	731.0	647.8	83.19	8.787	
10,400.0	6,900.0	10,689.0	7,220.0	44.6	48.3	115.96	1,073.7	826.0	731.1	645.4	85.75	8.526	
10,500.0	6,900.0	10,789.0	7,220.0	46.0	49.8	115.95	1,173.2	815.6	731.3	642.9	88.39	8.273	
10,600.0	6,900.0	10,889.0	7,220.0	47.5	51.2	115.94	1,272.6	805.2	731.4	640.3	91.10	8.029	
10,700.0	6,900.0	10,989.0	7,220.0	49.0	52.8	115.94	1,372.1	794.8	731.6	637.7	93.86	7.794	
10,800.0	6,900.0	11,089.0	7,220.0	50.6	54.3	115.93	1,471.5	784.4	731.8	635.1	96.68	7.569	
10,900.0	6,900.0	11,189.0	7,220.0	52.1	55.9	115.93	1,571.0	774.0	731.9	632.4	99.55	7.352	
11,000.0	6,900.0	11,289.0	7,220.0	53.7	57.5	115.92	1,670.4	763.6	732.1	629.6	102.47	7.144	
11,100.0	6,900.0	11,389.0	7,220.0	55.3	59.1	115.91	1,769.9	753.2	732.2	626.8	105.43	6.945	
11,200.0	6,900.0	11,489.0	7,220.0	57.0	60.7	115.91	1,869.4	742.8	732.4	623.9	108.42	6.755	
11,300.0	6,900.0	11,589.0	7,220.0	58.6	62.3	115.90	1,968.8	732.4	732.5	621.1	111.46	6.572	
11,400.0	6,900.0	11,689.0	7,220.0	60.3	64.0	115.90	2,068.3	722.0	732.7	618.2	114.53	6.398	
11,500.0	6,900.0	11,789.0	7,220.0	62.0	65.7	115.89	2,167.7	711.6	732.8	615.2	117.62	6.230	
11,600.0	6,900.0	11,889.0	7,220.0	63.7	67.4	115.89	2,267.2	701.2	733.0	612.2	120.75	6.070	
11,696.7	6,900.0	11,914.9	7,220.0	65.4	67.8	115.88	2,293.0	698.5	736.5	613.9	122.68	6.004 SF	

<b>Company:</b>	Synergy Resources	<b>Local Co-ordinate Reference:</b>	Well SRC Vista 11-2NHZ
<b>Project:</b>	SEC.2-T4N-R68W	<b>TVD Reference:</b>	WELL @ 5013.0ft (Original Well Elev)
<b>Reference Site:</b>	SRC Vista (N/S) Pad Sec.2-T4N-R68W	<b>MD Reference:</b>	WELL @ 5013.0ft (Original Well Elev)
<b>Site Error:</b>	0.0ft	<b>North Reference:</b>	True
<b>Reference Well:</b>	SRC Vista 11-2NHZ	<b>Survey Calculation Method:</b>	Minimum Curvature
<b>Well Error:</b>	0.0ft	<b>Output errors are at</b>	2.00 sigma
<b>Reference Wellbore</b>	Wellbore #1	<b>Database:</b>	Landmark
<b>Reference Design:</b>	Plan #1 (11-06-14)	<b>Offset TVD Reference:</b>	Offset Datum

Offset Design													Offset Site Error:	0.0 ft
Survey Program: 0-MWD													Offset Well Error:	0.0 ft
Reference		Offset		Semi Major Axis			Distance							Warning
Measured Depth (ft)	Vertical Depth (ft)	Measured Depth (ft)	Vertical Depth (ft)	Reference (ft)	Offset (ft)	Highside Toolface (°)	Offset Wellbore Centre +N/-S (ft)	+E/-W (ft)	Between Centres (ft)	Between Ellipses (ft)	Minimum Separation (ft)	Separation Factor		
0.0	0.0	0.0	0.0	0.0	0.0	180.00	-39.7	0.0	39.7					
100.0	100.0	100.0	100.0	0.1	0.1	180.00	-39.7	0.0	39.7	39.5	0.22	176.671		
200.0	200.0	200.0	200.0	0.3	0.3	180.00	-39.7	0.0	39.7	39.0	0.67	58.890		
300.0	300.0	300.0	300.0	0.6	0.6	180.00	-39.7	0.0	39.7	38.6	1.12	35.334		
400.0	400.0	400.0	400.0	0.8	0.8	180.00	-39.7	0.0	39.7	38.1	1.57	25.239		
500.0	500.0	500.0	500.0	1.0	1.0	180.00	-39.7	0.0	39.7	37.7	2.02	19.630		
600.0	600.0	600.0	600.0	1.2	1.2	180.00	-39.7	0.0	39.7	37.2	2.47	16.061		
700.0	700.0	700.0	700.0	1.5	1.5	180.00	-39.7	0.0	39.7	36.8	2.92	13.590		
800.0	800.0	800.0	800.0	1.7	1.7	180.00	-39.7	0.0	39.7	36.3	3.37	11.778		
900.0	900.0	900.0	900.0	1.9	1.9	180.00	-39.7	0.0	39.7	35.9	3.82	10.392		
1,000.0	1,000.0	1,000.0	1,000.0	2.1	2.1	180.00	-39.7	0.0	39.7	35.4	4.27	9.298		
1,100.0	1,100.0	1,100.0	1,100.0	2.4	2.4	180.00	-39.7	0.0	39.7	35.0	4.72	8.413		
1,200.0	1,200.0	1,200.0	1,200.0	2.6	2.6	180.00	-39.7	0.0	39.7	34.5	5.17	7.681		
1,300.0	1,300.0	1,300.0	1,300.0	2.8	2.8	180.00	-39.7	0.0	39.7	34.1	5.62	7.067		
1,400.0	1,400.0	1,400.0	1,400.0	3.0	3.0	180.00	-39.7	0.0	39.7	33.6	6.07	6.543		
1,500.0	1,500.0	1,500.0	1,500.0	3.3	3.3	180.00	-39.7	0.0	39.7	33.2	6.52	6.092		
1,600.0	1,600.0	1,600.0	1,600.0	3.5	3.5	180.00	-39.7	0.0	39.7	32.7	6.97	5.699 CC, ES		
1,700.0	1,700.0	1,698.6	1,698.6	3.7	3.7	179.42	-41.4	0.4	41.4	34.0	7.39	5.602		
1,800.0	1,800.0	1,797.0	1,796.9	3.9	3.9	177.93	-46.3	1.7	46.4	38.6	7.78	5.962		
1,900.0	1,900.0	1,895.0	1,894.5	4.2	4.0	176.05	-54.4	3.8	54.8	46.6	8.19	6.696		
2,000.0	2,000.0	1,992.2	1,991.0	4.4	4.2	174.23	-65.7	6.6	66.6	58.0	8.59	7.752		
2,100.0	2,100.0	2,088.8	2,086.5	4.6	4.4	-2.56	-80.0	10.3	80.1	71.1	8.97	8.929		
2,200.0	2,199.8	2,185.0	2,181.0	4.8	4.7	-4.03	-97.4	14.7	93.5	84.1	9.32	10.032		
2,300.0	2,299.5	2,280.8	2,274.4	4.9	5.0	-5.41	-117.7	19.9	106.7	97.1	9.66	11.045		
2,400.0	2,398.7	2,376.1	2,366.6	5.1	5.3	-6.73	-140.9	25.9	119.9	109.9	10.01	11.977		
2,500.0	2,497.5	2,471.0	2,457.6	5.3	5.7	-8.01	-167.0	32.5	133.1	122.7	10.37	12.832		
2,600.0	2,595.6	2,565.5	2,547.3	5.6	6.1	-9.26	-195.9	39.9	146.1	135.4	10.73	13.620		
2,700.0	2,693.1	2,659.6	2,635.6	5.8	6.6	-10.48	-227.4	47.9	159.1	148.0	11.10	14.328		
2,800.0	2,789.6	2,753.2	2,722.4	6.2	7.1	-11.68	-261.6	56.7	172.0	160.5	11.49	14.968		
2,900.0	2,885.3	2,846.5	2,807.6	6.5	7.7	-12.86	-298.4	66.1	184.8	172.9	11.90	15.533		
3,000.0	2,979.8	2,939.5	2,891.2	7.0	8.4	-14.02	-337.6	76.1	197.6	185.2	12.33	16.020		
3,100.0	3,073.2	3,032.0	2,973.1	7.5	9.1	-15.18	-379.3	86.7	210.2	197.4	12.80	16.425		
3,200.0	3,165.2	3,124.2	3,053.3	8.0	9.9	-16.32	-423.4	98.0	222.9	209.6	13.31	16.743		
3,300.0	3,255.8	3,219.6	3,134.9	8.7	10.8	-17.51	-471.3	110.2	235.1	221.2	13.89	16.923		
3,400.0	3,344.9	3,319.0	3,219.7	9.4	11.7	-18.87	-521.5	123.0	244.5	229.9	14.55	16.799		
3,500.0	3,432.4	3,418.5	3,304.7	10.2	12.6	-20.43	-571.7	135.9	250.8	235.5	15.31	16.378		
3,600.0	3,518.1	3,518.2	3,389.7	11.0	13.6	-22.21	-622.1	148.7	254.0	237.8	16.19	15.687		
3,700.0	3,602.0	3,617.7	3,474.7	11.9	14.6	-24.28	-672.4	161.6	254.3	237.1	17.24	14.757		
3,784.7	3,671.5	3,701.9	3,546.5	12.8	15.4	-26.32	-714.9	172.5	252.4	234.1	18.28	13.807		
3,800.0	3,683.9	3,717.1	3,559.5	12.9	15.6	-26.71	-722.6	174.4	251.9	233.4	18.51	13.611		
3,900.0	3,765.1	3,816.4	3,644.2	13.9	16.6	-29.29	-772.7	187.2	248.8	228.8	20.07	12.398		
4,000.0	3,846.3	3,915.7	3,729.0	15.0	17.5	-31.94	-822.9	200.0	246.3	224.5	21.80	11.296		
4,100.0	3,927.5	4,015.0	3,813.7	16.0	18.5	-34.63	-873.0	212.8	244.3	220.6	23.70	10.307		
4,200.0	4,008.8	4,114.3	3,898.5	17.1	19.5	-37.37	-923.2	225.7	242.8	217.1	25.76	9.428		
4,300.0	4,090.0	4,213.6	3,983.2	18.1	20.5	-40.12	-973.3	238.5	242.0	214.0	27.96	8.653		
4,400.0	4,171.2	4,313.0	4,067.9	19.2	21.6	-42.89	-1,023.5	251.3	241.6	211.3	30.31	7.974		
4,404.0	4,174.4	4,316.9	4,071.3	19.3	21.6	-43.01	-1,025.5	251.8	241.6	211.2	30.40	7.948		
4,500.0	4,252.4	4,412.3	4,152.7	20.3	22.6	-45.67	-1,073.7	264.1	241.9	209.1	32.77	7.383		
4,600.0	4,333.6	4,511.6	4,237.4	21.4	23.6	-48.43	-1,123.8	276.9	242.7	207.4	35.33	6.870		
4,700.0	4,414.8	4,610.9	4,322.2	22.5	24.6	-51.16	-1,174.0	289.7	244.2	206.2	37.98	6.429		
4,800.0	4,496.0	4,710.2	4,406.9	23.6	25.6	-53.86	-1,224.1	302.5	246.1	205.4	40.69	6.048		
4,900.0	4,577.3	4,809.5	4,491.7	24.7	26.6	-56.51	-1,274.3	315.3	248.6	205.2	43.45	5.722		

CC - Min centre to center distance or convergent point, SF - min separation factor, ES - min ellipse separation



<b>Company:</b>	Synergy Resources	<b>Local Co-ordinate Reference:</b>	Well SRC Vista 11-2NHZ
<b>Project:</b>	SEC.2-T4N-R68W	<b>TVD Reference:</b>	WELL @ 5013.0ft (Original Well Elev)
<b>Reference Site:</b>	SRC Vista (N/S) Pad Sec.2-T4N-R68W	<b>MD Reference:</b>	WELL @ 5013.0ft (Original Well Elev)
<b>Site Error:</b>	0.0ft	<b>North Reference:</b>	True
<b>Reference Well:</b>	SRC Vista 11-2NHZ	<b>Survey Calculation Method:</b>	Minimum Curvature
<b>Well Error:</b>	0.0ft	<b>Output errors are at</b>	2.00 sigma
<b>Reference Wellbore</b>	Wellbore #1	<b>Database:</b>	Landmark
<b>Reference Design:</b>	Plan #1 (11-06-14)	<b>Offset TVD Reference:</b>	Offset Datum

Offset Design												Offset Site Error:	0.0 ft
Survey Program: 0-MWDD												Offset Well Error:	0.0 ft
Reference		Offset		Semi Major Axis			Distance						
Measured Depth (ft)	Vertical Depth (ft)	Measured Depth (ft)	Vertical Depth (ft)	Reference (ft)	Offset (ft)	Highside Toolface (°)	Offset Wellbore Centre +N/-S (ft)	+E/-W (ft)	Between Centres (ft)	Between Ellipses (ft)	Minimum Separation (ft)	Separation Factor	Warning
5,000.0	4,658.5	4,908.8	4,576.4	25.8	27.7	-59.10	-1,324.4	328.1	251.6	205.4	46.23	5.443	
5,100.0	4,739.7	5,008.1	4,661.1	26.9	28.7	-61.63	-1,374.6	341.0	255.2	206.2	49.03	5.205	
5,200.0	4,820.9	5,107.4	4,745.9	28.0	29.7	-64.08	-1,424.7	353.8	259.2	207.4	51.83	5.001	
5,300.0	4,902.1	5,206.7	4,830.6	29.2	30.7	-66.46	-1,474.9	366.6	263.7	209.1	54.61	4.829	
5,400.0	4,983.3	5,306.0	4,915.4	30.3	31.7	-68.75	-1,525.1	379.4	268.6	211.3	57.37	4.682	
5,500.0	5,064.5	5,405.3	5,000.1	31.4	32.8	-70.96	-1,575.2	392.2	274.0	213.9	60.10	4.559	
5,600.0	5,145.8	5,504.6	5,084.9	32.5	33.8	-73.08	-1,625.4	405.0	279.7	216.9	62.80	4.455	
5,700.0	5,227.0	5,603.9	5,169.6	33.6	34.8	-75.11	-1,675.5	417.8	285.8	220.4	65.45	4.367	
5,800.0	5,308.2	5,703.2	5,254.3	34.8	35.8	-77.06	-1,725.7	430.6	292.3	224.2	68.06	4.295	
5,900.0	5,389.4	5,802.5	5,339.1	35.9	36.9	-78.92	-1,775.8	443.4	299.1	228.5	70.63	4.235	
6,000.0	5,470.6	5,901.8	5,423.8	37.0	37.9	-80.70	-1,826.0	456.3	306.2	233.0	73.15	4.186	
6,100.0	5,551.8	6,001.1	5,508.6	38.1	38.9	-82.40	-1,876.2	469.1	313.6	237.9	75.63	4.146	
6,200.0	5,633.1	6,100.4	5,593.3	39.3	40.0	-84.01	-1,926.3	481.9	321.2	243.1	78.06	4.115	
6,300.0	5,714.3	6,199.7	5,678.1	40.4	41.0	-85.56	-1,976.5	494.7	329.1	248.6	80.45	4.091	
6,367.5	5,769.1	6,266.7	5,735.3	41.2	41.7	-86.56	-2,010.3	503.3	334.5	252.5	82.04	4.078	
6,400.0	5,795.9	6,299.1	5,762.9	41.5	42.0	-86.73	-2,026.7	507.5	337.1	254.4	82.76	4.074	
6,450.0	5,838.7	6,348.9	5,805.4	41.8	42.5	-86.35	-2,051.8	513.9	341.1	257.4	83.69	4.075	
6,500.0	5,883.2	6,398.0	5,847.3	42.2	43.0	-85.17	-2,076.4	520.3	344.8	260.3	84.48	4.082	
6,550.0	5,929.1	6,445.8	5,889.4	42.5	43.4	-83.50	-2,098.2	526.6	348.7	263.6	85.05	4.099	
6,600.0	5,976.3	6,493.8	5,933.0	42.7	43.7	-81.19	-2,117.2	533.2	352.7	267.1	85.54	4.123	
6,650.0	6,024.5	6,542.0	5,978.0	42.9	43.9	-77.67	-2,133.3	539.9	356.8	270.8	85.95	4.151	
6,700.0	6,073.5	6,590.5	6,024.2	43.1	44.1	-71.53	-2,146.3	546.8	361.0	274.8	86.26	4.185	
6,750.0	6,123.1	6,639.3	6,071.4	43.2	44.3	-57.94	-2,156.1	553.9	365.3	278.9	86.48	4.225	
6,800.0	6,172.9	6,688.3	6,119.4	43.3	44.5	-17.44	-2,162.7	561.0	369.7	283.1	86.60	4.269	
6,850.0	6,222.8	6,737.6	6,168.0	43.3	44.6	42.26	-2,166.0	568.3	374.2	287.6	86.64	4.319	
6,900.0	6,272.5	6,787.1	6,217.1	43.2	44.6	64.70	-2,165.9	575.5	378.7	292.1	86.58	4.374	
6,950.0	6,321.8	6,837.0	6,266.3	43.2	44.6	73.35	-2,162.4	582.8	383.2	296.8	86.43	4.434	
7,000.0	6,370.5	6,887.2	6,315.4	43.0	44.6	77.82	-2,155.3	590.1	387.7	301.5	86.19	4.498	
7,050.0	6,418.2	6,937.7	6,364.3	42.9	44.5	80.57	-2,144.7	597.3	392.1	306.3	85.87	4.567	
7,100.0	6,464.8	6,988.6	6,412.6	42.7	44.4	82.46	-2,130.5	604.4	396.5	311.1	85.46	4.640	
7,150.0	6,510.0	7,039.8	6,460.1	42.4	44.2	83.85	-2,112.8	611.3	400.8	315.8	84.97	4.717	
7,200.0	6,553.6	7,091.3	6,506.5	42.2	44.0	84.93	-2,091.5	618.1	405.0	320.6	84.41	4.798	
7,250.0	6,595.5	7,143.1	6,551.6	41.8	43.7	85.79	-2,066.8	624.6	409.1	325.3	83.78	4.883	
7,300.0	6,635.3	7,195.3	6,595.0	41.5	43.4	86.51	-2,038.6	631.0	413.0	329.9	83.09	4.970	
7,350.0	6,672.9	7,247.8	6,636.6	41.1	43.1	87.11	-2,007.2	637.0	416.7	334.4	82.34	5.060	
7,400.0	6,708.2	7,300.6	6,676.0	40.7	42.7	87.62	-1,972.5	642.6	420.2	338.7	81.55	5.153	
7,450.0	6,740.9	7,353.7	6,712.9	40.3	42.3	88.06	-1,934.7	647.9	423.5	342.8	80.71	5.247	
7,500.0	6,770.9	7,407.1	6,747.2	39.9	41.9	88.44	-1,894.1	652.8	426.6	346.7	79.84	5.343	
7,550.0	6,798.1	7,460.8	6,778.6	39.4	41.5	88.77	-1,850.8	657.3	429.3	350.4	78.94	5.439	
7,600.0	6,822.3	7,514.7	6,806.7	38.9	41.0	89.05	-1,805.0	661.2	431.8	353.8	78.03	5.534	
7,650.0	6,843.3	7,568.9	6,831.5	38.5	40.5	89.29	-1,756.9	664.6	434.0	356.9	77.12	5.628	
7,700.0	6,861.2	7,623.2	6,852.7	38.0	40.1	89.49	-1,707.0	667.5	435.9	359.7	76.20	5.720	
7,750.0	6,875.8	7,677.8	6,870.2	37.5	39.6	89.66	-1,655.4	669.9	437.4	362.1	75.30	5.809	
7,800.0	6,886.9	7,732.5	6,883.7	37.1	39.1	89.79	-1,602.4	671.6	438.6	364.2	74.41	5.894	
7,850.0	6,894.7	7,787.3	6,893.2	36.6	38.7	89.90	-1,548.5	672.8	439.4	365.9	73.55	5.974	
7,900.0	6,899.0	7,842.2	6,898.7	36.2	38.2	89.97	-1,493.8	673.3	439.9	367.2	72.73	6.049	
7,937.1	6,900.0	7,882.9	6,900.0	35.9	37.9	90.00	-1,453.2	673.3	440.0	367.9	72.14	6.099	
8,000.0	6,900.0	7,946.1	6,900.0	35.4	37.4	90.00	-1,389.9	673.0	440.0	368.8	71.17	6.182	
8,100.0	6,900.0	8,046.1	6,900.0	34.6	36.7	90.00	-1,289.9	672.5	440.0	370.2	69.76	6.307	
8,200.0	6,900.0	8,146.1	6,900.0	34.0	36.0	90.00	-1,189.9	672.0	440.0	371.4	68.53	6.420	
8,300.0	6,900.0	8,246.1	6,900.0	33.4	35.4	90.00	-1,089.9	671.5	440.0	372.5	67.50	6.518	
8,400.0	6,900.0	8,346.1	6,900.0	32.9	34.9	90.00	-989.9	671.1	439.9	373.3	66.67	6.599	

CC - Min centre to center distance or convergent point, SF - min separation factor, ES - min ellipse separation

<b>Company:</b>	Synergy Resources	<b>Local Co-ordinate Reference:</b>	Well SRC Vista 11-2NHZ
<b>Project:</b>	SEC.2-T4N-R68W	<b>TVD Reference:</b>	WELL @ 5013.0ft (Original Well Elev)
<b>Reference Site:</b>	SRC Vista (N/S) Pad Sec.2-T4N-R68W	<b>MD Reference:</b>	WELL @ 5013.0ft (Original Well Elev)
<b>Site Error:</b>	0.0ft	<b>North Reference:</b>	True
<b>Reference Well:</b>	SRC Vista 11-2NHZ	<b>Survey Calculation Method:</b>	Minimum Curvature
<b>Well Error:</b>	0.0ft	<b>Output errors are at</b>	2.00 sigma
<b>Reference Wellbore</b>	Wellbore #1	<b>Database:</b>	Landmark
<b>Reference Design:</b>	Plan #1 (11-06-14)	<b>Offset TVD Reference:</b>	Offset Datum

Offset Design												Offset Site Error:	0.0 ft
SRC Vista (N/S) Pad Sec.2-T4N-R68W - SRC Vista 12-2NHZ - Wellbore #1 - Plan #1 (11-07-14)												Offset Well Error:	0.0 ft
Survey Program: 0-MWD													
Reference		Offset		Semi Major Axis			Distance						
Measured Depth (ft)	Vertical Depth (ft)	Measured Depth (ft)	Vertical Depth (ft)	Reference (ft)	Offset (ft)	Highside Toolface (°)	Offset Wellbore Centre +N/-S (ft)	+E/-W (ft)	Between Centres (ft)	Between Ellipses (ft)	Minimum Separation (ft)	Separation Factor	Warning
8,500.0	6,900.0	8,446.1	6,900.0	32.6	34.6	90.00	-889.9	670.6	439.9	373.9	66.06	6.660	
8,600.0	6,900.0	8,546.1	6,900.0	32.4	34.3	90.00	-789.9	670.1	439.9	374.2	65.66	6.699	
8,700.0	6,900.0	8,646.1	6,900.0	32.2	34.1	90.00	-689.9	669.6	439.9	374.4	65.49	6.716	
8,800.0	6,900.0	8,746.1	6,900.0	32.2	34.0	90.00	-589.9	669.1	439.9	374.3	65.55	6.710	
8,900.0	6,900.0	8,846.1	6,900.0	32.3	34.0	90.00	-489.9	668.6	439.9	374.0	65.83	6.682	
9,000.0	6,900.0	8,946.1	6,900.0	32.5	34.2	90.00	-389.9	668.1	439.8	373.5	66.33	6.631	
9,100.0	6,900.0	9,046.1	6,900.0	32.9	34.5	90.00	-289.9	667.6	439.8	372.8	67.05	6.559	
9,200.0	6,900.0	9,146.1	6,900.0	33.3	34.9	90.00	-189.9	667.1	439.8	371.8	67.98	6.470	
9,300.0	6,900.0	9,246.1	6,900.0	33.9	35.4	90.00	-89.9	666.7	439.8	370.7	69.11	6.363	
9,400.0	6,900.0	9,346.1	6,900.0	34.5	36.0	90.00	10.1	666.2	439.8	369.3	70.43	6.244	
9,500.0	6,900.0	9,446.1	6,900.0	35.2	36.7	90.00	110.1	665.7	439.7	367.8	71.94	6.113	
9,600.0	6,900.0	9,546.1	6,900.0	36.1	37.5	90.00	210.1	665.2	439.7	366.1	73.61	5.974	
9,700.0	6,900.0	9,646.1	6,900.0	37.0	38.5	90.00	310.1	664.7	439.7	364.3	75.44	5.828	
9,800.0	6,900.0	9,746.1	6,900.0	38.0	39.4	90.00	410.1	664.2	439.7	362.3	77.42	5.679	
9,812.9	6,900.0	9,759.0	6,900.0	38.1	39.6	90.00	422.9	664.1	439.7	362.0	77.68	5.660	
9,900.0	6,900.0	9,871.3	6,900.0	38.8	40.4	90.00	535.2	660.5	439.3	360.1	79.15	5.550	
10,003.8	6,900.0	9,993.8	6,900.0	39.6	41.5	90.00	657.1	649.4	437.8	357.2	80.57	5.433	
10,006.1	6,900.0	9,996.0	6,900.0	39.6	41.6	90.00	659.4	649.2	437.8	357.2	80.60	5.431	
10,100.0	6,900.0	10,090.0	6,900.0	40.5	42.8	90.00	752.8	639.3	437.9	355.2	82.72	5.294	
10,200.0	6,900.0	10,190.0	6,900.0	41.9	44.1	90.00	852.2	628.9	438.0	352.7	85.31	5.134	
10,300.0	6,900.0	10,290.0	6,900.0	43.2	45.5	90.00	951.7	618.4	438.1	350.1	88.00	4.979	
10,400.0	6,900.0	10,390.0	6,900.0	44.6	46.9	90.00	1,051.1	608.0	438.2	347.5	90.78	4.827	
10,500.0	6,900.0	10,490.0	6,900.0	46.0	48.3	90.00	1,150.6	597.5	438.4	344.7	93.65	4.681	
10,600.0	6,900.0	10,590.0	6,900.0	47.5	49.8	90.00	1,250.0	587.1	438.5	341.9	96.59	4.540	
10,700.0	6,900.0	10,690.0	6,900.0	49.0	51.3	90.00	1,349.5	576.6	438.6	339.0	99.60	4.404	
10,800.0	6,900.0	10,790.0	6,900.0	50.6	52.9	90.00	1,448.9	566.2	438.7	336.0	102.67	4.273	
10,900.0	6,900.0	10,890.0	6,900.0	52.1	54.5	90.00	1,548.4	555.7	438.8	333.0	105.81	4.148	
11,000.0	6,900.0	10,990.0	6,900.0	53.7	56.1	90.00	1,647.9	545.3	439.0	330.0	108.99	4.028	
11,100.0	6,900.0	11,090.0	6,900.0	55.3	57.7	90.00	1,747.3	534.8	439.1	326.9	112.22	3.913	
11,200.0	6,900.0	11,190.0	6,900.0	57.0	59.3	90.00	1,846.8	524.4	439.2	323.7	115.49	3.803	
11,300.0	6,900.0	11,290.0	6,900.0	58.6	61.0	90.00	1,946.2	513.9	439.3	320.5	118.81	3.698	
11,400.0	6,900.0	11,390.0	6,900.0	60.3	62.6	90.00	2,045.7	503.5	439.4	317.3	122.16	3.597	
11,500.0	6,900.0	11,490.0	6,900.0	62.0	64.3	90.00	2,145.1	493.0	439.5	314.0	125.55	3.501	
11,600.0	6,900.0	11,590.0	6,900.0	63.7	66.0	90.00	2,244.6	482.6	439.7	310.7	128.96	3.409	
11,625.3	6,900.0	11,615.3	6,900.0	64.2	66.5	90.00	2,269.8	480.0	439.7	309.9	129.83	3.387	
11,696.7	6,900.0	11,639.0	6,900.0	65.4	66.9	90.00	2,293.3	477.5	442.4	310.9	131.47	3.365 SF	



<b>Company:</b>	Synergy Resources	<b>Local Co-ordinate Reference:</b>	Well SRC Vista 11-2NHZ
<b>Project:</b>	SEC.2-T4N-R68W	<b>TVD Reference:</b>	WELL @ 5013.0ft (Original Well Elev)
<b>Reference Site:</b>	SRC Vista (N/S) Pad Sec.2-T4N-R68W	<b>MD Reference:</b>	WELL @ 5013.0ft (Original Well Elev)
<b>Site Error:</b>	0.0ft	<b>North Reference:</b>	True
<b>Reference Well:</b>	SRC Vista 11-2NHZ	<b>Survey Calculation Method:</b>	Minimum Curvature
<b>Well Error:</b>	0.0ft	<b>Output errors are at</b>	2.00 sigma
<b>Reference Wellbore</b>	Wellbore #1	<b>Database:</b>	Landmark
<b>Reference Design:</b>	Plan #1 (11-06-14)	<b>Offset TVD Reference:</b>	Offset Datum

Offset Design SRC Vista (N/S) Pad Sec.2-T4N-R68W - SRC Vista 21-2CHZ - Wellbore #1 - Plan #1 (11-10-14)												Offset Site Error:	0.0 ft
Survey Program: 0-MWD												Offset Well Error:	0.0 ft
Measured Depth (ft)	Vertical Depth (ft)	Measured Depth (ft)	Vertical Depth (ft)	Reference (ft)	Offset (ft)	Semi Major Axis Highside Toolface (°)	Offset Wellbore Centre +N/-S (ft)	+E/-W (ft)	Between Centres (ft)	Between Ellipses (ft)	Minimum Separation (ft)	Separation Factor	Warning
0.0	0.0	0.0	0.0	0.0	0.0	179.89	-139.9	0.3	139.9				
100.0	100.0	100.0	100.0	0.1	0.1	179.89	-139.9	0.3	139.9	139.7	0.22	622.401	
200.0	200.0	200.0	200.0	0.3	0.3	179.89	-139.9	0.3	139.9	139.2	0.67	207.467	
300.0	300.0	300.0	300.0	0.6	0.6	179.89	-139.9	0.3	139.9	138.8	1.12	124.480	
400.0	400.0	400.0	400.0	0.8	0.8	179.89	-139.9	0.3	139.9	138.3	1.57	88.914	
500.0	500.0	500.0	500.0	1.0	1.0	179.89	-139.9	0.3	139.9	137.9	2.02	69.156	
600.0	600.0	600.0	600.0	1.2	1.2	179.89	-139.9	0.3	139.9	137.4	2.47	56.582 CC, ES	
700.0	700.0	696.2	696.2	1.5	1.4	179.49	-141.2	1.3	141.2	138.3	2.89	48.858	
800.0	800.0	792.2	792.1	1.7	1.6	178.35	-145.0	4.2	145.3	142.0	3.30	44.039	
900.0	900.0	887.8	887.3	1.9	1.8	176.60	-151.4	9.0	152.2	148.5	3.72	40.895	
1,000.0	1,000.0	982.7	981.6	2.1	2.0	174.40	-160.2	15.7	162.0	157.9	4.16	38.971	
1,100.0	1,100.0	1,076.8	1,074.6	2.4	2.3	171.96	-171.4	24.2	175.0	170.4	4.61	37.977	
1,200.0	1,200.0	1,169.9	1,166.1	2.6	2.6	169.45	-184.9	34.4	191.1	186.0	5.07	37.708	
1,300.0	1,300.0	1,261.7	1,255.9	2.8	3.0	167.01	-200.5	46.3	210.5	204.9	5.54	38.011	
1,400.0	1,400.0	1,352.2	1,343.6	3.0	3.4	164.71	-218.1	59.6	233.1	227.0	6.01	38.768	
1,500.0	1,500.0	1,441.2	1,429.2	3.3	3.8	162.62	-237.6	74.4	258.8	252.3	6.49	39.884	
1,600.0	1,600.0	1,528.6	1,512.4	3.5	4.3	160.74	-258.7	90.4	287.8	280.8	6.97	41.284	
1,700.0	1,700.0	1,614.1	1,593.1	3.7	4.8	159.07	-281.4	107.6	319.7	312.3	7.45	42.906	
1,800.0	1,800.0	1,700.0	1,673.2	3.9	5.4	157.57	-306.1	126.3	354.6	346.7	7.94	44.666	
1,900.0	1,900.0	1,779.7	1,746.6	4.2	6.0	156.32	-330.7	145.0	392.3	383.9	8.42	46.605	
2,000.0	2,000.0	1,859.5	1,819.3	4.4	6.6	155.20	-357.0	164.9	432.7	423.8	8.90	48.617	
2,100.0	2,100.0	1,941.6	1,893.1	4.6	7.3	-20.77	-385.5	186.6	474.2	464.9	9.25	51.273	
2,200.0	2,199.8	2,033.1	1,975.2	4.8	8.1	-21.65	-417.8	211.1	513.4	503.7	9.70	52.914	
2,300.0	2,299.5	2,125.6	2,058.1	4.9	8.9	-22.52	-450.5	235.9	549.9	539.7	10.17	54.093	
2,400.0	2,398.7	2,219.2	2,142.0	5.1	9.8	-23.41	-483.5	261.0	583.5	572.9	10.64	54.863	
2,500.0	2,497.5	2,313.6	2,226.6	5.3	10.6	-24.32	-516.9	286.2	614.3	603.2	11.11	55.276	
2,600.0	2,595.6	2,408.7	2,311.9	5.6	11.5	-25.28	-550.4	311.7	642.3	630.7	11.60	55.352	
2,700.0	2,693.1	2,504.5	2,397.8	5.8	12.4	-26.29	-584.2	337.3	667.6	655.5	12.11	55.129	
2,800.0	2,789.6	2,600.7	2,484.1	6.2	13.3	-27.36	-618.2	363.1	690.1	677.5	12.64	54.615	
2,900.0	2,885.3	2,697.4	2,570.7	6.5	14.1	-28.50	-652.4	389.0	710.0	696.8	13.19	53.816	
3,000.0	2,979.8	2,794.4	2,657.6	7.0	15.0	-29.72	-686.6	415.0	727.2	713.4	13.79	52.735	
3,100.0	3,073.2	2,891.5	2,744.7	7.5	15.9	-31.03	-720.9	441.0	741.9	727.4	14.44	51.373	
3,200.0	3,165.2	2,988.6	2,831.8	8.0	16.8	-32.43	-755.1	467.0	754.1	739.0	15.16	49.733	
3,300.0	3,255.8	3,085.7	2,918.8	8.7	17.7	-33.94	-789.4	493.0	764.0	748.0	15.98	47.825	
3,400.0	3,344.9	3,182.5	3,005.6	9.4	18.6	-35.57	-823.6	518.9	771.7	754.8	16.90	45.669	
3,500.0	3,432.4	3,279.1	3,092.2	10.2	19.5	-37.33	-857.7	544.8	777.4	759.4	17.95	43.296	
3,600.0	3,518.1	3,375.2	3,178.3	11.0	20.4	-39.21	-891.6	570.5	781.1	762.0	19.17	40.752	
3,700.0	3,602.0	3,470.7	3,264.0	11.9	21.3	-41.24	-925.3	596.1	783.2	762.7	20.56	38.093	
3,784.7	3,671.5	3,551.2	3,336.1	12.8	22.0	-43.08	-953.7	617.6	783.9	762.0	21.90	35.799	
3,800.0	3,683.9	3,565.6	3,349.1	12.9	22.2	-43.42	-958.8	621.5	783.9	761.8	22.15	35.390	
3,900.0	3,765.1	3,660.3	3,433.9	13.9	23.1	-45.65	-992.3	646.9	785.0	761.1	23.89	32.865	
4,000.0	3,846.3	3,754.9	3,518.8	15.0	23.9	-47.88	-1,025.7	672.2	787.4	761.7	25.73	30.599	
4,100.0	3,927.5	3,849.6	3,603.6	16.0	24.8	-50.08	-1,059.1	697.5	791.1	763.4	27.68	28.579	
4,200.0	4,008.8	3,944.2	3,688.5	17.1	25.7	-52.27	-1,092.5	722.9	796.1	766.4	29.72	26.785	
4,300.0	4,090.0	4,038.9	3,773.3	18.1	26.6	-54.43	-1,125.9	748.2	802.4	770.6	31.84	25.198	
4,400.0	4,171.2	4,133.5	3,858.1	19.2	27.5	-56.55	-1,159.3	773.6	809.9	775.9	34.03	23.798	
4,500.0	4,252.4	4,228.1	3,943.0	20.3	28.3	-58.64	-1,192.7	798.9	818.6	782.3	36.28	22.563	
4,600.0	4,333.6	4,322.8	4,027.8	21.4	29.2	-60.68	-1,226.1	824.3	828.5	789.9	38.58	21.477	
4,700.0	4,414.8	4,417.4	4,112.7	22.5	30.1	-62.68	-1,259.5	849.6	839.5	798.6	40.91	20.521	
4,800.0	4,496.0	4,512.1	4,197.5	23.6	31.0	-64.63	-1,292.9	874.9	851.6	808.4	43.27	19.680	
4,900.0	4,577.3	4,606.7	4,282.4	24.7	31.9	-66.52	-1,326.4	900.3	864.8	819.1	45.66	18.941	
5,000.0	4,658.5	4,701.4	4,367.2	25.8	32.8	-68.37	-1,359.8	925.6	878.9	830.8	48.05	18.291	

CC - Min centre to center distance or convergent point, SF - min separation factor, ES - min ellipse separation

<b>Company:</b>	Synergy Resources	<b>Local Co-ordinate Reference:</b>	Well SRC Vista 11-2NHZ
<b>Project:</b>	SEC.2-T4N-R68W	<b>TVD Reference:</b>	WELL @ 5013.0ft (Original Well Elev)
<b>Reference Site:</b>	SRC Vista (N/S) Pad Sec.2-T4N-R68W	<b>MD Reference:</b>	WELL @ 5013.0ft (Original Well Elev)
<b>Site Error:</b>	0.0ft	<b>North Reference:</b>	True
<b>Reference Well:</b>	SRC Vista 11-2NHZ	<b>Survey Calculation Method:</b>	Minimum Curvature
<b>Well Error:</b>	0.0ft	<b>Output errors are at</b>	2.00 sigma
<b>Reference Wellbore</b>	Wellbore #1	<b>Database:</b>	Landmark
<b>Reference Design:</b>	Plan #1 (11-06-14)	<b>Offset TVD Reference:</b>	Offset Datum

<b>Offset Design</b>												<b>Offset Site Error:</b>	0.0 ft
SRC Vista (N/S) Pad Sec.2-T4N-R68W - SRC Vista 21-2CHZ - Wellbore #1 - Plan #1 (11-10-14)												<b>Offset Well Error:</b>	0.0 ft
Survey Program: 0-MWD													
Reference		Offset		Semi Major Axis			Distance						
Measured Depth (ft)	Vertical Depth (ft)	Measured Depth (ft)	Vertical Depth (ft)	Reference (ft)	Offset (ft)	Highside Toolface (°)	Offset Wellbore Centre +N/-S (ft)	+E/-W (ft)	Between Centres (ft)	Between Ellipses (ft)	Minimum Separation (ft)	Separation Factor	Warning
5,100.0	4,739.7	4,796.0	4,452.1	26.9	33.6	-70.16	-1,393.2	951.0	894.0	843.5	50.45	17.719	
5,200.0	4,820.9	4,890.6	4,536.9	28.0	34.5	-71.89	-1,426.6	976.3	909.9	857.1	52.86	17.215	
5,300.0	4,902.1	4,985.3	4,621.8	29.2	35.4	-73.56	-1,460.0	1,001.7	926.7	871.5	55.25	16.772	
5,400.0	4,983.3	5,079.9	4,706.6	30.3	36.3	-75.18	-1,493.4	1,027.0	944.4	886.7	57.64	16.383	
5,500.0	5,064.5	5,174.6	4,791.4	31.4	37.2	-76.74	-1,526.8	1,052.3	962.7	902.7	60.02	16.040	
5,600.0	5,145.8	5,269.2	4,876.3	32.5	38.1	-78.25	-1,560.2	1,077.7	981.8	919.5	62.39	15.738 SF	

COMPASS 2003.21 Build 46

<b>Company:</b>	Synergy Resources	<b>Local Co-ordinate Reference:</b>	Well SRC Vista 11-2NHZ
<b>Project:</b>	SEC.2-T4N-R68W	<b>TVD Reference:</b>	WELL @ 5013.0ft (Original Well Elev)
<b>Reference Site:</b>	SRC Vista (N/S) Pad Sec.2-T4N-R68W	<b>MD Reference:</b>	WELL @ 5013.0ft (Original Well Elev)
<b>Site Error:</b>	0.0ft	<b>North Reference:</b>	True
<b>Reference Well:</b>	SRC Vista 11-2NHZ	<b>Survey Calculation Method:</b>	Minimum Curvature
<b>Well Error:</b>	0.0ft	<b>Output errors are at</b>	2.00 sigma
<b>Reference Wellbore</b>	Wellbore #1	<b>Database:</b>	Landmark
<b>Reference Design:</b>	Plan #1 (11-06-14)	<b>Offset TVD Reference:</b>	Offset Datum

<b>Offset Design</b>												<b>Offset Site Error:</b>	0.0 ft
SRC Vista (N/S) Pad Sec.2-T4N-R68W - SRC Vista 21-2NHZ - Wellbore #1 - Plan #1 (11-10-14)												<b>Offset Well Error:</b>	0.0 ft
Survey Program: 0-MWD													
Reference		Offset		Semi Major Axis			Distance						
Measured Depth (ft)	Vertical Depth (ft)	Measured Depth (ft)	Vertical Depth (ft)	Reference (ft)	Offset (ft)	Highside Toolface (°)	Offset Wellbore Centre +N/-S (ft)	+E/-W (ft)	Between Centres (ft)	Between Ellipses (ft)	Minimum Separation (ft)	Separation Factor	Warning
5,100.0	4,739.7	4,826.4	4,461.6	26.9	33.5	-65.84	-1,441.6	852.4	805.5	755.7	49.83	16.166	
5,200.0	4,820.9	4,922.3	4,546.2	28.0	34.4	-67.55	-1,479.5	876.9	819.3	767.0	52.29	15.667	
5,300.0	4,902.1	5,018.2	4,630.8	29.2	35.4	-69.20	-1,517.5	901.3	833.8	779.0	54.76	15.226	
5,400.0	4,983.3	5,114.1	4,715.3	30.3	36.3	-70.80	-1,555.5	925.8	849.0	791.7	57.23	14.835	
5,500.0	5,064.5	5,210.0	4,799.9	31.4	37.3	-72.34	-1,593.5	950.3	864.8	805.1	59.69	14.489	
5,600.0	5,145.8	5,305.9	4,884.5	32.5	38.2	-73.83	-1,631.4	974.8	881.3	819.1	62.14	14.182	
5,700.0	5,227.0	5,401.8	4,969.1	33.6	39.1	-75.27	-1,669.4	999.3	898.3	833.8	64.58	13.911	
5,800.0	5,308.2	5,497.7	5,053.7	34.8	40.1	-76.66	-1,707.4	1,023.8	916.0	849.0	67.01	13.670	
5,900.0	5,389.4	5,593.6	5,138.3	35.9	41.0	-77.99	-1,745.4	1,048.3	934.1	864.7	69.42	13.456	
6,000.0	5,470.6	5,689.5	5,222.9	37.0	42.0	-79.28	-1,783.3	1,072.8	952.8	881.0	71.82	13.267	
6,100.0	5,551.8	5,785.4	5,307.5	38.1	42.9	-80.52	-1,821.3	1,097.3	971.9	897.7	74.20	13.099	
6,200.0	5,633.1	5,881.4	5,392.1	39.3	43.9	-81.71	-1,859.3	1,121.7	991.4	914.9	76.56	12.950 SF	

<b>Company:</b>	Synergy Resources	<b>Local Co-ordinate Reference:</b>	Well SRC Vista 11-2NHZ
<b>Project:</b>	SEC.2-T4N-R68W	<b>TVD Reference:</b>	WELL @ 5013.0ft (Original Well Elev)
<b>Reference Site:</b>	SRC Vista (N/S) Pad Sec.2-T4N-R68W	<b>MD Reference:</b>	WELL @ 5013.0ft (Original Well Elev)
<b>Site Error:</b>	0.0ft	<b>North Reference:</b>	True
<b>Reference Well:</b>	SRC Vista 11-2NHZ	<b>Survey Calculation Method:</b>	Minimum Curvature
<b>Well Error:</b>	0.0ft	<b>Output errors are at</b>	2.00 sigma
<b>Reference Wellbore</b>	Wellbore #1	<b>Database:</b>	Landmark
<b>Reference Design:</b>	Plan #1 (11-06-14)	<b>Offset TVD Reference:</b>	Offset Datum

Offset Design													Offset Site Error:	0.0 ft
Survey Program: 0-MWD													Offset Well Error:	0.0 ft
Reference		Offset		Semi Major Axis			Distance							Warning
Measured Depth (ft)	Vertical Depth (ft)	Measured Depth (ft)	Vertical Depth (ft)	Reference (ft)	Offset (ft)	Highside Toolface (°)	Offset Wellbore Centre +N/-S (ft)	+E/-W (ft)	Between Centres (ft)	Between Ellipses (ft)	Minimum Separation (ft)	Separation Factor		
0.0	0.0	0.0	0.0	0.0	0.0	179.84	-99.8	0.3	99.8					
100.0	100.0	100.0	100.0	0.1	0.1	179.84	-99.8	0.3	99.8	99.6	0.22	444.110		
200.0	200.0	200.0	200.0	0.3	0.3	179.84	-99.8	0.3	99.8	99.1	0.67	148.037		
300.0	300.0	300.0	300.0	0.6	0.6	179.84	-99.8	0.3	99.8	98.7	1.12	88.822		
400.0	400.0	400.0	400.0	0.8	0.8	179.84	-99.8	0.3	99.8	98.2	1.57	63.444		
500.0	500.0	500.0	500.0	1.0	1.0	179.84	-99.8	0.3	99.8	97.8	2.02	49.346		
600.0	600.0	600.0	600.0	1.2	1.2	179.84	-99.8	0.3	99.8	97.3	2.47	40.374		
700.0	700.0	700.0	700.0	1.5	1.5	179.84	-99.8	0.3	99.8	96.9	2.92	34.162		
800.0	800.0	800.0	800.0	1.7	1.7	179.84	-99.8	0.3	99.8	96.4	3.37	29.607		
900.0	900.0	900.0	900.0	1.9	1.9	179.84	-99.8	0.3	99.8	96.0	3.82	26.124		
1,000.0	1,000.0	1,000.0	1,000.0	2.1	2.1	179.84	-99.8	0.3	99.8	95.6	4.27	23.374 CC, ES		
1,100.0	1,100.0	1,097.0	1,097.0	2.4	2.3	179.39	-101.3	1.1	101.3	96.6	4.69	21.609		
1,200.0	1,200.0	1,193.8	1,193.6	2.6	2.5	178.14	-105.6	3.4	105.8	100.7	5.09	20.788		
1,300.0	1,300.0	1,290.1	1,289.6	2.8	2.7	176.27	-112.7	7.3	113.4	107.9	5.50	20.615		
1,400.0	1,400.0	1,385.8	1,384.6	3.0	2.9	174.05	-122.5	12.8	124.2	118.2	5.92	20.971		
1,500.0	1,500.0	1,480.6	1,478.4	3.3	3.1	171.72	-135.1	19.7	138.2	131.8	6.35	21.764		
1,600.0	1,600.0	1,574.4	1,570.5	3.5	3.4	169.46	-150.1	27.9	155.5	148.7	6.79	22.917		
1,700.0	1,700.0	1,666.9	1,660.9	3.7	3.7	167.38	-167.5	37.5	176.1	168.9	7.23	24.363		
1,800.0	1,800.0	1,758.1	1,749.2	3.9	4.1	165.53	-187.2	48.3	199.9	192.2	7.67	26.047		
1,900.0	1,900.0	1,847.7	1,835.3	4.2	4.5	163.91	-208.9	60.2	226.8	218.7	8.12	27.921		
2,000.0	2,000.0	1,935.6	1,919.0	4.4	4.9	162.52	-232.5	73.2	256.9	248.3	8.58	29.945		
2,100.0	2,100.0	2,022.2	2,000.7	4.6	5.4	-13.78	-258.0	87.2	288.2	279.3	8.96	32.174		
2,200.0	2,199.8	2,108.0	2,080.6	4.8	6.0	-14.87	-285.3	102.2	319.4	310.0	9.35	34.158		
2,300.0	2,299.5	2,192.9	2,158.8	4.9	6.6	-15.92	-314.4	118.2	350.3	340.5	9.75	35.939		
2,400.0	2,398.7	2,277.1	2,235.2	5.1	7.2	-16.94	-345.2	135.1	380.9	370.8	10.15	37.532		
2,500.0	2,497.5	2,364.7	2,313.8	5.3	7.9	-18.00	-379.2	153.8	411.2	400.6	10.57	38.896		
2,600.0	2,595.6	2,460.3	2,399.2	5.6	8.7	-19.14	-416.7	174.4	439.0	428.0	11.02	39.832		
2,700.0	2,693.1	2,556.6	2,485.3	5.8	9.5	-20.29	-454.5	195.2	463.9	452.4	11.49	40.375		
2,800.0	2,789.6	2,653.5	2,572.0	6.2	10.4	-21.47	-492.6	216.2	485.9	473.9	11.98	40.550		
2,900.0	2,885.3	2,751.0	2,659.1	6.5	11.2	-22.70	-530.8	237.2	504.9	492.4	12.50	40.380		
3,000.0	2,979.8	2,848.9	2,746.6	7.0	12.1	-24.00	-569.2	258.3	521.1	508.0	13.06	39.884		
3,100.0	3,073.2	2,947.0	2,834.3	7.5	13.0	-25.39	-607.8	279.5	534.4	520.7	13.68	39.076		
3,200.0	3,165.2	3,045.3	2,922.2	8.0	13.9	-26.88	-646.3	300.7	545.0	530.6	14.35	37.969		
3,300.0	3,255.8	3,143.6	3,010.1	8.7	14.8	-28.50	-684.9	321.9	553.0	537.8	15.12	36.581		
3,400.0	3,344.9	3,241.8	3,098.0	9.4	15.6	-30.26	-723.5	343.1	558.4	542.4	15.99	34.930		
3,500.0	3,432.4	3,339.9	3,185.6	10.2	16.5	-32.19	-762.0	364.2	561.4	544.4	16.99	33.047		
3,600.0	3,518.1	3,437.6	3,273.0	11.0	17.4	-34.29	-800.4	385.3	562.3	544.1	18.15	30.971		
3,700.0	3,602.0	3,534.8	3,359.9	11.9	18.3	-36.60	-838.5	406.3	561.1	541.6	19.51	28.754		
3,784.7	3,671.5	3,616.8	3,433.2	12.8	19.1	-38.74	-870.7	424.0	558.7	537.9	20.84	26.810		
3,800.0	3,683.9	3,631.6	3,446.4	12.9	19.2	-39.13	-876.5	427.2	558.2	537.1	21.10	26.455		
3,900.0	3,765.1	3,728.0	3,532.7	13.9	20.1	-41.73	-914.4	448.0	555.5	532.6	22.88	24.275		
4,000.0	3,846.3	3,824.5	3,618.9	15.0	21.0	-44.34	-952.3	468.8	554.0	529.2	24.81	22.335		
4,067.2	3,900.9	3,889.3	3,676.9	15.7	21.6	-46.10	-977.7	482.8	553.8	527.6	26.17	21.160		
4,100.0	3,927.5	3,921.0	3,705.2	16.0	21.8	-46.97	-990.2	489.7	553.8	527.0	26.86	20.622		
4,200.0	4,008.8	4,017.5	3,791.5	17.1	22.7	-49.58	-1,028.0	510.5	554.9	525.8	29.02	19.120		
4,300.0	4,090.0	4,114.0	3,877.7	18.1	23.6	-52.19	-1,065.9	531.3	557.1	525.8	31.28	17.810		
4,400.0	4,171.2	4,210.5	3,964.0	19.2	24.5	-54.76	-1,103.8	552.1	560.6	527.0	33.63	16.671		
4,500.0	4,252.4	4,307.0	4,050.3	20.3	25.4	-57.31	-1,141.7	572.9	565.3	529.3	36.04	15.685		
4,600.0	4,333.6	4,403.5	4,136.5	21.4	26.3	-59.81	-1,179.6	593.8	571.2	532.7	38.51	14.834		
4,700.0	4,414.8	4,500.0	4,222.8	22.5	27.2	-62.25	-1,217.4	614.6	578.2	537.2	41.01	14.099		
4,800.0	4,496.0	4,596.5	4,309.1	23.6	28.1	-64.64	-1,255.3	635.4	586.2	542.7	43.53	13.467		
4,900.0	4,577.3	4,693.0	4,395.3	24.7	29.0	-66.96	-1,293.2	656.2	595.4	549.3	46.07	12.924		

CC - Min centre to center distance or convergent point, SF - min separation factor, ES - min ellipse separation

<b>Company:</b>	Synergy Resources	<b>Local Co-ordinate Reference:</b>	Well SRC Vista 11-2NHZ
<b>Project:</b>	SEC.2-T4N-R68W	<b>TVD Reference:</b>	WELL @ 5013.0ft (Original Well Elev)
<b>Reference Site:</b>	SRC Vista (N/S) Pad Sec.2-T4N-R68W	<b>MD Reference:</b>	WELL @ 5013.0ft (Original Well Elev)
<b>Site Error:</b>	0.0ft	<b>North Reference:</b>	True
<b>Reference Well:</b>	SRC Vista 11-2NHZ	<b>Survey Calculation Method:</b>	Minimum Curvature
<b>Well Error:</b>	0.0ft	<b>Output errors are at</b>	2.00 sigma
<b>Reference Wellbore</b>	Wellbore #1	<b>Database:</b>	Landmark
<b>Reference Design:</b>	Plan #1 (11-06-14)	<b>Offset TVD Reference:</b>	Offset Datum

Offset Design												Offset Site Error:	0.0 ft
SRC Vista (N/S) Pad Sec.2-T4N-R68W - SRC Vista A-2CHZ - Wellbore #1 - Plan #1 (11-10-14)												Offset Well Error:	0.0 ft
Survey Program: 0-MWD													
Reference		Offset		Semi Major Axis			Distance						
Measured Depth (ft)	Vertical Depth (ft)	Measured Depth (ft)	Vertical Depth (ft)	Reference (ft)	Offset (ft)	Highside Toolface (°)	Offset Wellbore Centre +N/-S (ft)	+E/-W (ft)	Between Centres (ft)	Between Ellipses (ft)	Minimum Separation (ft)	Separation Factor	Warning
5,000.0	4,658.5	4,789.4	4,481.6	25.8	29.8	-69.22	-1,331.1	677.0	605.5	556.9	48.61	12.458	
5,100.0	4,739.7	4,885.9	4,567.9	26.9	30.7	-71.40	-1,369.0	697.9	616.6	565.5	51.14	12.058	
5,200.0	4,820.9	4,982.4	4,654.1	28.0	31.6	-73.50	-1,406.8	718.7	628.6	575.0	53.65	11.717	
5,300.0	4,902.1	5,078.9	4,740.4	29.2	32.5	-75.53	-1,444.7	739.5	641.4	585.3	56.14	11.426	
5,400.0	4,983.3	5,175.4	4,826.7	30.3	33.4	-77.48	-1,482.6	760.3	655.1	596.5	58.61	11.178	
5,500.0	5,064.5	5,271.9	4,912.9	31.4	34.3	-79.35	-1,520.5	781.1	669.5	608.5	61.04	10.968	
5,600.0	5,145.8	5,368.4	4,999.2	32.5	35.2	-81.15	-1,558.4	802.0	684.6	621.2	63.44	10.791	
5,700.0	5,227.0	5,464.9	5,085.5	33.6	36.1	-82.87	-1,596.2	822.8	700.4	634.5	65.81	10.642	
5,800.0	5,308.2	5,561.4	5,171.7	34.8	37.0	-84.51	-1,634.1	843.6	716.7	648.6	68.14	10.518	
5,900.0	5,389.4	5,657.9	5,258.0	35.9	37.9	-86.09	-1,672.0	864.4	733.7	663.2	70.44	10.416	
6,000.0	5,470.6	5,754.4	5,344.3	37.0	38.8	-87.59	-1,709.9	885.2	751.2	678.5	72.70	10.332	
6,100.0	5,551.8	5,850.8	5,430.5	38.1	39.7	-89.03	-1,747.8	906.1	769.2	694.2	74.93	10.265	
6,200.0	5,633.1	5,947.3	5,516.8	39.3	40.6	-90.40	-1,785.6	926.9	787.6	710.5	77.13	10.211	
6,300.0	5,714.3	6,043.8	5,603.1	40.4	41.5	-91.72	-1,823.5	947.7	806.5	727.2	79.30	10.171	
6,367.5	5,769.1	6,108.9	5,661.3	41.2	42.1	-92.57	-1,849.1	961.8	819.5	738.7	80.74	10.150	
6,400.0	5,795.9	6,140.5	5,689.5	41.5	42.3	-93.04	-1,861.5	968.6	825.7	744.2	81.49	10.132	
6,450.0	5,838.7	6,189.4	5,733.2	41.8	42.8	-93.38	-1,880.7	979.1	834.8	752.3	82.50	10.118	
6,500.0	5,883.2	6,238.6	5,777.2	42.2	43.3	-93.18	-1,900.0	989.7	843.3	759.9	83.44	10.107	
6,550.0	5,929.1	6,287.9	5,821.3	42.5	43.7	-92.32	-1,919.3	1,000.4	851.2	767.0	84.29	10.099	
6,600.0	5,976.3	6,337.1	5,865.3	42.7	44.2	-90.53	-1,938.7	1,011.0	858.5	773.4	85.05	10.094	
6,650.0	6,024.5	6,385.9	5,908.9	42.9	44.6	-87.28	-1,957.8	1,021.5	865.1	779.4	85.71	10.093 SF	
6,700.0	6,073.5	6,434.0	5,951.9	43.1	45.1	-81.15	-1,976.7	1,031.9	871.1	784.9	86.27	10.097	
6,750.0	6,123.1	6,481.3	5,994.2	43.2	45.5	-67.36	-1,995.3	1,042.1	876.7	790.0	86.73	10.108	
6,800.0	6,172.9	6,527.5	6,035.5	43.3	45.9	-26.46	-2,013.4	1,052.1	882.0	794.9	87.09	10.128	
6,850.0	6,222.8	6,572.3	6,075.6	43.3	46.4	33.79	-2,031.0	1,061.8	887.1	799.8	87.33	10.158	
6,900.0	6,272.5	6,615.7	6,114.3	43.2	46.8	56.89	-2,048.0	1,071.1	892.3	804.8	87.47	10.201	
6,950.0	6,321.8	6,657.2	6,151.5	43.2	47.1	66.29	-2,064.3	1,080.1	897.7	810.2	87.51	10.258	
7,000.0	6,370.5	6,696.9	6,186.9	43.0	47.5	71.53	-2,079.9	1,088.6	903.6	816.1	87.47	10.330	
7,050.0	6,418.2	6,734.3	6,220.4	42.9	47.9	75.04	-2,094.6	1,096.7	910.2	822.8	87.35	10.420	
7,100.0	6,464.8	6,769.5	6,251.9	42.7	48.2	77.62	-2,108.4	1,104.3	917.7	830.6	87.17	10.528	
7,150.0	6,510.0	6,804.0	6,283.0	42.4	48.4	79.64	-2,121.0	1,111.8	926.4	839.5	86.91	10.659	
7,200.0	6,553.6	6,839.5	6,315.7	42.2	48.6	81.33	-2,132.4	1,119.7	936.2	849.6	86.57	10.814	
7,250.0	6,595.5	6,876.3	6,350.2	41.8	48.8	82.80	-2,142.5	1,128.0	947.2	861.0	86.19	10.989	
7,300.0	6,635.3	6,914.8	6,386.6	41.5	49.0	84.11	-2,151.0	1,136.8	959.3	873.5	85.77	11.184	
7,350.0	6,672.9	6,955.2	6,425.4	41.1	49.2	85.31	-2,157.8	1,146.1	972.5	887.2	85.32	11.398	
7,400.0	6,708.2	6,998.1	6,466.8	40.7	49.4	86.45	-2,162.5	1,156.0	986.8	901.9	84.82	11.633	

<b>Company:</b>	Synergy Resources	<b>Local Co-ordinate Reference:</b>	Well SRC Vista 11-2NHZ
<b>Project:</b>	SEC.2-T4N-R68W	<b>TVD Reference:</b>	WELL @ 5013.0ft (Original Well Elev)
<b>Reference Site:</b>	SRC Vista (N/S) Pad Sec.2-T4N-R68W	<b>MD Reference:</b>	WELL @ 5013.0ft (Original Well Elev)
<b>Site Error:</b>	0.0ft	<b>North Reference:</b>	True
<b>Reference Well:</b>	SRC Vista 11-2NHZ	<b>Survey Calculation Method:</b>	Minimum Curvature
<b>Well Error:</b>	0.0ft	<b>Output errors are at</b>	2.00 sigma
<b>Reference Wellbore</b>	Wellbore #1	<b>Database:</b>	Landmark
<b>Reference Design:</b>	Plan #1 (11-06-14)	<b>Offset TVD Reference:</b>	Offset Datum

Offset Design													Offset Site Error:	0.0 ft
Survey Program: 0-MWD													Offset Well Error:	0.0 ft
Reference		Offset		Semi Major Axis			Distance							Warning
Measured Depth (ft)	Vertical Depth (ft)	Measured Depth (ft)	Vertical Depth (ft)	Reference (ft)	Offset (ft)	Highside Toolface (°)	Offset Wellbore Centre +N/-S (ft)	+E/-W (ft)	Between Centres (ft)	Between Ellipses (ft)	Minimum Separation (ft)	Separation Factor		
0.0	0.0	0.0	0.0	0.0	0.0	180.00	-79.8	0.0	79.8					
100.0	100.0	100.0	100.0	0.1	0.1	180.00	-79.8	0.0	79.8	79.6	0.22	354.944		
200.0	200.0	200.0	200.0	0.3	0.3	180.00	-79.8	0.0	79.8	79.1	0.67	118.315		
300.0	300.0	300.0	300.0	0.6	0.6	180.00	-79.8	0.0	79.8	78.7	1.12	70.989		
400.0	400.0	400.0	400.0	0.8	0.8	180.00	-79.8	0.0	79.8	78.2	1.57	50.706		
500.0	500.0	500.0	500.0	1.0	1.0	180.00	-79.8	0.0	79.8	77.8	2.02	39.438		
600.0	600.0	600.0	600.0	1.2	1.2	180.00	-79.8	0.0	79.8	77.3	2.47	32.268		
700.0	700.0	700.0	700.0	1.5	1.5	180.00	-79.8	0.0	79.8	76.9	2.92	27.303		
800.0	800.0	800.0	800.0	1.7	1.7	180.00	-79.8	0.0	79.8	76.4	3.37	23.663		
900.0	900.0	900.0	900.0	1.9	1.9	180.00	-79.8	0.0	79.8	76.0	3.82	20.879		
1,000.0	1,000.0	1,000.0	1,000.0	2.1	2.1	180.00	-79.8	0.0	79.8	75.5	4.27	18.681		
1,100.0	1,100.0	1,100.0	1,100.0	2.4	2.4	180.00	-79.8	0.0	79.8	75.1	4.72	16.902		
1,200.0	1,200.0	1,200.0	1,200.0	2.6	2.6	180.00	-79.8	0.0	79.8	74.6	5.17	15.432 CC, ES		
1,300.0	1,300.0	1,297.5	1,297.5	2.8	2.8	179.53	-81.3	0.7	81.3	75.8	5.59	14.557		
1,400.0	1,400.0	1,394.7	1,394.6	3.0	3.0	178.21	-85.8	2.7	86.0	80.1	5.99	14.371		
1,500.0	1,500.0	1,491.5	1,491.0	3.3	3.1	176.33	-93.3	6.0	94.0	87.6	6.39	14.694		
1,600.0	1,600.0	1,587.7	1,586.5	3.5	3.3	174.17	-103.7	10.6	105.1	98.3	6.81	15.442		
1,700.0	1,700.0	1,683.0	1,680.7	3.7	3.6	172.01	-116.9	16.4	119.6	112.4	7.23	16.547		
1,800.0	1,800.0	1,777.2	1,773.3	3.9	3.8	169.99	-132.8	23.4	137.5	129.8	7.66	17.948		
1,900.0	1,900.0	1,870.1	1,864.0	4.2	4.1	168.21	-151.1	31.5	158.5	150.4	8.09	19.594		
2,000.0	2,000.0	1,961.7	1,952.7	4.4	4.5	166.68	-171.8	40.7	182.8	174.3	8.53	21.438		
2,100.0	2,100.0	2,052.1	2,039.6	4.6	4.8	-9.80	-194.8	50.9	208.6	199.7	8.91	23.398		
2,200.0	2,199.8	2,141.7	2,124.9	4.8	5.3	-11.03	-220.1	62.0	234.1	224.8	9.29	25.203		
2,300.0	2,299.5	2,230.7	2,208.6	4.9	5.8	-12.21	-247.5	74.2	259.5	249.8	9.67	26.841		
2,400.0	2,398.7	2,318.9	2,290.7	5.1	6.3	-13.36	-277.1	87.2	284.7	274.6	10.05	28.319		
2,500.0	2,497.5	2,406.4	2,371.1	5.3	6.9	-14.47	-308.7	101.2	309.7	299.2	10.44	29.652		
2,600.0	2,595.6	2,493.3	2,449.8	5.6	7.5	-15.55	-342.3	116.0	334.5	323.6	10.84	30.842		
2,700.0	2,693.1	2,579.4	2,526.7	5.8	8.2	-16.61	-377.7	131.7	359.1	347.9	11.26	31.890		
2,800.0	2,789.6	2,665.7	2,602.6	6.2	9.0	-17.66	-415.3	148.3	383.6	371.9	11.70	32.793		
2,900.0	2,885.3	2,762.7	2,687.3	6.5	9.9	-18.86	-458.5	167.4	406.3	394.1	12.19	33.323		
3,000.0	2,979.8	2,860.3	2,772.5	7.0	10.8	-20.09	-502.0	186.7	426.0	413.3	12.72	33.483		
3,100.0	3,073.2	2,958.3	2,858.1	7.5	11.7	-21.37	-545.8	206.0	442.7	429.4	13.30	33.288		
3,200.0	3,165.2	3,056.7	2,943.9	8.0	12.6	-22.74	-589.6	225.4	456.4	442.5	13.93	32.759		
3,300.0	3,255.8	3,155.3	3,030.0	8.7	13.5	-24.21	-633.6	244.8	467.3	452.7	14.64	31.917		
3,400.0	3,344.9	3,254.0	3,116.2	9.4	14.5	-25.80	-677.6	264.3	475.4	460.0	15.44	30.785		
3,500.0	3,432.4	3,352.7	3,202.4	10.2	15.4	-27.54	-721.6	283.7	480.8	464.5	16.36	29.389		
3,600.0	3,518.1	3,451.3	3,288.5	11.0	16.4	-29.46	-765.6	303.2	483.6	466.2	17.42	27.762		
3,700.0	3,602.0	3,549.6	3,374.3	11.9	17.4	-31.58	-809.4	322.5	484.1	465.4	18.66	25.945		
3,784.7	3,671.5	3,632.6	3,446.8	12.8	18.2	-33.55	-846.4	338.9	482.7	462.8	19.87	24.294		
3,800.0	3,683.9	3,647.5	3,459.8	12.9	18.3	-33.92	-853.1	341.8	482.3	462.2	20.11	23.980		
3,900.0	3,765.1	3,745.3	3,545.2	13.9	19.3	-36.34	-896.7	361.1	480.3	458.6	21.79	22.045		
4,000.0	3,846.3	3,843.1	3,630.6	15.0	20.2	-38.77	-940.3	380.4	479.3	455.7	23.61	20.304		
4,065.2	3,899.3	3,906.9	3,686.3	15.6	20.8	-40.36	-968.7	393.0	479.1	454.2	24.86	19.270		
4,100.0	3,927.5	3,940.9	3,716.0	16.0	21.2	-41.21	-983.9	399.7	479.2	453.6	25.56	18.750		
4,200.0	4,008.8	4,038.7	3,801.4	17.1	22.1	-43.65	-1,027.5	419.0	479.9	452.3	27.63	17.371		
4,300.0	4,090.0	4,136.5	3,886.8	18.1	23.1	-46.07	-1,071.1	438.2	481.6	451.8	29.81	16.156		
4,400.0	4,171.2	4,234.3	3,972.2	19.2	24.1	-48.48	-1,114.7	457.5	484.2	452.1	32.09	15.088		
4,500.0	4,252.4	4,332.1	4,057.6	20.3	25.0	-50.85	-1,158.3	476.8	487.6	453.2	34.45	14.153		
4,600.0	4,333.6	4,429.9	4,142.9	21.4	26.0	-53.19	-1,202.0	496.1	491.9	455.0	36.89	13.335		
4,700.0	4,414.8	4,527.7	4,228.3	22.5	27.0	-55.49	-1,245.6	515.3	497.1	457.7	39.38	12.622		
4,800.0	4,496.0	4,625.5	4,313.7	23.6	27.9	-57.74	-1,289.2	534.6	503.0	461.1	41.92	12.001		
4,900.0	4,577.3	4,723.3	4,399.1	24.7	28.9	-59.94	-1,332.8	553.9	509.8	465.3	44.49	11.459		

CC - Min centre to center distance or convergent point, SF - min separation factor, ES - min ellipse separation



<b>Company:</b>	Synergy Resources	<b>Local Co-ordinate Reference:</b>	Well SRC Vista 11-2NHZ
<b>Project:</b>	SEC.2-T4N-R68W	<b>TVD Reference:</b>	WELL @ 5013.0ft (Original Well Elev)
<b>Reference Site:</b>	SRC Vista (N/S) Pad Sec.2-T4N-R68W	<b>MD Reference:</b>	WELL @ 5013.0ft (Original Well Elev)
<b>Site Error:</b>	0.0ft	<b>North Reference:</b>	True
<b>Reference Well:</b>	SRC Vista 11-2NHZ	<b>Survey Calculation Method:</b>	Minimum Curvature
<b>Well Error:</b>	0.0ft	<b>Output errors are at</b>	2.00 sigma
<b>Reference Wellbore</b>	Wellbore #1	<b>Database:</b>	Landmark
<b>Reference Design:</b>	Plan #1 (11-06-14)	<b>Offset TVD Reference:</b>	Offset Datum

Offset Design												Offset Site Error:	0.0 ft
Survey Program: 0-MWDD												Offset Well Error:	0.0 ft
Reference		Offset		Semi Major Axis			Distance						
Measured Depth (ft)	Vertical Depth (ft)	Measured Depth (ft)	Vertical Depth (ft)	Reference (ft)	Offset (ft)	Highside Toolface (°)	Offset Wellbore Centre +N/-S (ft)	+E/-W (ft)	Between Centres (ft)	Between Ellipses (ft)	Minimum Separation (ft)	Separation Factor	Warning
5,000.0	4,658.5	4,821.1	4,484.5	25.8	29.9	-62.07	-1,376.4	573.2	517.3	470.2	47.08	10.988	
5,100.0	4,739.7	4,918.9	4,569.9	26.9	30.9	-64.15	-1,420.0	592.5	525.5	475.8	49.68	10.578	
5,200.0	4,820.9	5,016.7	4,655.3	28.0	31.8	-66.16	-1,463.6	611.7	534.4	482.1	52.29	10.221	
5,300.0	4,902.1	5,114.5	4,740.7	29.2	32.8	-68.10	-1,507.2	631.0	544.0	489.1	54.89	9.911	
5,400.0	4,983.3	5,212.3	4,826.1	30.3	33.8	-69.98	-1,550.8	650.3	554.2	496.7	57.48	9.641	
5,500.0	5,064.5	5,310.1	4,911.4	31.4	34.7	-71.79	-1,594.4	669.6	565.0	504.9	60.06	9.406	
5,600.0	5,145.8	5,407.9	4,996.8	32.5	35.7	-73.53	-1,638.0	688.8	576.3	513.7	62.62	9.203	
5,700.0	5,227.0	5,505.7	5,082.2	33.6	36.7	-75.21	-1,681.7	708.1	588.1	523.0	65.16	9.027	
5,800.0	5,308.2	5,603.5	5,167.6	34.8	37.7	-76.82	-1,725.3	727.4	600.5	532.8	67.67	8.874	
5,900.0	5,389.4	5,701.3	5,253.0	35.9	38.6	-78.37	-1,768.9	746.7	613.3	543.1	70.16	8.742	
6,000.0	5,470.6	5,799.1	5,338.4	37.0	39.6	-79.85	-1,812.5	766.0	626.5	553.9	72.61	8.628	
6,100.0	5,551.8	5,896.9	5,423.8	38.1	40.6	-81.28	-1,856.1	785.2	640.2	565.1	75.05	8.530	
6,200.0	5,633.1	5,994.7	5,509.2	39.3	41.6	-82.64	-1,899.7	804.5	654.2	576.7	77.45	8.446	
6,300.0	5,714.3	6,092.5	5,594.6	40.4	42.5	-83.95	-1,943.3	823.8	668.6	588.7	79.83	8.375	
6,367.5	5,769.1	6,158.5	5,652.2	41.2	43.2	-84.80	-1,972.7	836.8	678.5	597.0	81.42	8.333	
6,400.0	5,795.9	6,190.4	5,680.0	41.5	43.5	-85.15	-1,987.0	843.1	683.3	601.1	82.21	8.311	
6,450.0	5,838.7	6,239.7	5,723.1	41.8	44.0	-85.29	-2,009.0	852.8	690.6	607.4	83.26	8.295	
6,500.0	5,883.2	6,289.2	5,766.3	42.2	44.5	-84.88	-2,031.0	862.6	697.9	613.7	84.20	8.288	
6,550.0	5,929.1	6,338.5	5,809.4	42.5	45.0	-83.80	-2,053.0	872.3	705.0	620.0	85.04	8.291	
6,600.0	5,976.3	6,387.5	5,852.2	42.7	45.5	-81.79	-2,074.9	881.9	712.0	626.2	85.75	8.303	
6,650.0	6,024.5	6,435.4	5,894.0	42.9	45.9	-78.34	-2,096.2	891.4	718.9	632.6	86.34	8.326	
6,700.0	6,073.5	6,480.1	5,933.7	43.1	46.3	-72.23	-2,114.5	900.4	726.0	639.3	86.73	8.371	
6,750.0	6,123.1	6,525.4	5,975.1	43.2	46.5	-58.67	-2,130.5	909.7	733.3	646.3	87.02	8.427	
6,800.0	6,172.9	6,571.3	6,017.9	43.3	46.8	-18.19	-2,143.8	919.3	740.9	653.7	87.23	8.494	
6,850.0	6,222.8	6,617.8	6,062.1	43.3	47.0	41.49	-2,154.5	929.2	748.7	661.4	87.35	8.572	
6,900.0	6,272.5	6,665.1	6,107.6	43.2	47.2	63.91	-2,162.4	939.4	756.7	669.3	87.38	8.660	
6,950.0	6,321.8	6,713.2	6,154.3	43.2	47.4	72.56	-2,167.1	949.9	764.8	677.5	87.32	8.758	
7,000.0	6,370.5	6,762.2	6,202.0	43.0	47.5	77.03	-2,168.7	960.5	773.0	685.8	87.17	8.868	
7,050.0	6,418.2	6,812.1	6,250.7	42.9	47.5	79.78	-2,166.8	971.4	781.3	694.4	86.94	8.987	
7,100.0	6,464.8	6,863.0	6,300.0	42.7	47.5	81.69	-2,161.4	982.4	789.6	703.0	86.61	9.116	
7,150.0	6,510.0	6,914.9	6,349.9	42.4	47.5	83.11	-2,152.1	993.5	797.9	711.7	86.20	9.255	
7,200.0	6,553.6	6,967.9	6,400.0	42.2	47.4	84.22	-2,138.8	1,004.6	806.1	720.3	85.71	9.404	
7,250.0	6,595.5	7,022.1	6,450.1	41.8	47.3	85.14	-2,121.4	1,015.8	814.1	729.0	85.14	9.562	
7,300.0	6,635.3	7,077.6	6,499.9	41.5	47.1	85.91	-2,099.6	1,026.8	822.0	737.5	84.49	9.729	
7,350.0	6,672.9	7,134.3	6,548.9	41.1	46.9	86.57	-2,073.3	1,037.6	829.6	745.8	83.77	9.904	
7,400.0	6,708.2	7,192.3	6,596.8	40.7	46.6	87.15	-2,042.4	1,048.2	836.9	753.9	82.98	10.086	
7,450.0	6,740.9	7,251.6	6,643.2	40.3	46.3	87.67	-2,006.8	1,058.4	843.8	761.7	82.14	10.273	
7,500.0	6,770.9	7,312.3	6,687.4	39.9	46.0	88.12	-1,966.4	1,068.1	850.3	769.1	81.24	10.467	
7,550.0	6,798.1	7,374.2	6,728.9	39.4	45.5	88.53	-1,921.4	1,077.1	856.3	776.0	80.31	10.663	
7,600.0	6,822.3	7,437.4	6,767.2	38.9	45.1	88.88	-1,871.9	1,085.5	861.8	782.4	79.35	10.860	
7,650.0	6,843.3	7,501.8	6,801.7	38.5	44.6	89.19	-1,818.0	1,092.9	866.6	788.2	78.37	11.057	
7,700.0	6,861.2	7,567.3	6,831.8	38.0	44.1	89.45	-1,760.3	1,099.4	870.7	793.3	77.40	11.250	
7,750.0	6,875.8	7,633.6	6,857.0	37.5	43.6	89.66	-1,699.1	1,104.7	874.1	797.7	76.43	11.437	
7,800.0	6,886.9	7,700.8	6,876.7	37.1	43.0	89.82	-1,635.1	1,108.8	876.8	801.3	75.49	11.615	
7,850.0	6,894.7	7,768.6	6,890.6	36.6	42.5	89.93	-1,568.9	1,111.6	878.7	804.1	74.58	11.781	
7,900.0	6,899.0	7,836.7	6,898.3	36.2	42.0	89.99	-1,501.2	1,113.1	879.7	806.0	73.72	11.932	
7,937.1	6,900.0	7,887.0	6,900.0	35.9	41.6	90.00	-1,451.0	1,113.2	879.9	806.8	73.12	12.033	
8,000.0	6,900.0	7,949.9	6,900.0	35.4	41.1	90.00	-1,388.0	1,112.9	879.9	807.7	72.19	12.188	
8,100.0	6,900.0	8,049.9	6,900.0	34.6	40.4	90.00	-1,288.0	1,112.4	879.9	809.1	70.83	12.423	
8,200.0	6,900.0	8,149.9	6,900.0	34.0	39.7	90.00	-1,188.0	1,112.0	879.9	810.3	69.66	12.633	
8,300.0	6,900.0	8,249.9	6,900.0	33.4	39.1	90.00	-1,088.0	1,111.5	880.0	811.3	68.67	12.813	
8,400.0	6,900.0	8,349.9	6,900.0	32.9	38.5	90.00	-988.0	1,111.1	880.0	812.1	67.90	12.960	

CC - Min centre to center distance or convergent point, SF - min separation factor, ES - min ellipse separation



Offset Design      SRC Vista (N/S) Pad Sec.2-T4N-R68W -   SRC Vista A-2NHZ - Wellbore #1 - Plan #1 (11-07-14)													Offset Site Error:      0.0 ft	
Survey Program:   0-MWD													Offset Well Error:      0.0 ft	
Reference		Offset		Semi Major Axis			Distance						Warning	
Measured Depth	Vertical Depth	Measured Depth	Vertical Depth	Reference	Offset	Highside Toolface	Offset Wellbore Centre		Between Centres	Between Ellipses	Minimum Separation	Separation Factor		
(ft)	(ft)	(ft)	(ft)	(ft)	(ft)	(°)	+N/-S (ft)	+E/-W (ft)	(ft)	(ft)	(ft)			
8,500.0	6,900.0	8,449.9	6,900.0	32.6	38.1	90.00	-888.0	1,110.6	880.0	812.6	67.33	13.070		
8,600.0	6,900.0	8,549.9	6,900.0	32.4	37.6	90.00	-788.0	1,110.2	880.0	813.0	66.98	13.138		
8,700.0	6,900.0	8,649.9	6,900.0	32.2	37.3	90.00	-688.0	1,109.7	880.0	813.2	66.85	13.164		
8,800.0	6,900.0	8,749.9	6,900.0	32.2	37.0	90.00	-588.0	1,109.2	880.0	813.1	66.94	13.147		
8,900.0	6,900.0	8,849.9	6,900.0	32.3	36.9	90.00	-488.0	1,108.8	880.0	812.8	67.25	13.087		
9,000.0	6,900.0	8,949.9	6,900.0	32.5	36.8	90.00	-388.0	1,108.3	880.0	812.3	67.77	12.985		
9,100.0	6,900.0	9,049.9	6,900.0	32.9	36.8	90.00	-288.0	1,107.9	880.1	811.5	68.51	12.845		
9,200.0	6,900.0	9,149.9	6,900.0	33.3	37.0	90.00	-188.0	1,107.4	880.1	810.6	69.46	12.671		
9,300.0	6,900.0	9,249.9	6,900.0	33.9	37.3	90.00	-88.0	1,106.9	880.1	809.5	70.60	12.466		
9,400.0	6,900.0	9,349.9	6,900.0	34.5	37.8	90.00	12.0	1,106.5	880.1	808.2	71.93	12.236		
9,500.0	6,900.0	9,449.9	6,900.0	35.2	38.4	90.00	112.0	1,106.0	880.1	806.7	73.43	11.985		
9,600.0	6,900.0	9,549.9	6,900.0	36.1	39.1	90.00	212.0	1,105.6	880.1	805.0	75.11	11.718		
9,700.0	6,900.0	9,649.9	6,900.0	37.0	40.0	90.00	312.0	1,105.1	880.1	803.2	76.94	11.439		
9,800.0	6,900.0	9,749.9	6,900.0	38.0	40.9	90.00	412.0	1,104.7	880.1	801.2	78.91	11.154		
9,812.9	6,900.0	9,762.8	6,900.0	38.1	41.1	90.00	424.8	1,104.6	880.1	801.0	79.17	11.117		
9,900.0	6,900.0	9,919.1	6,900.0	38.8	42.3	90.00	580.9	1,098.0	879.0	797.9	81.07	10.842		
10,002.7	6,900.0	10,040.2	6,900.0	39.6	43.7	90.00	701.4	1,085.8	876.4	793.7	82.72	10.594		
10,006.1	6,900.0	10,043.5	6,900.0	39.6	43.7	90.00	704.7	1,085.5	876.4	793.6	82.77	10.588		
10,100.0	6,900.0	10,137.4	6,900.0	40.5	44.9	90.00	798.1	1,075.7	876.6	791.7	84.89	10.327		
10,200.0	6,900.0	10,237.4	6,900.0	41.9	46.3	90.00	897.6	1,065.3	876.8	789.3	87.47	10.024		
10,300.0	6,900.0	10,337.4	6,900.0	43.2	47.7	90.00	997.1	1,054.9	876.9	786.8	90.14	9.728		
10,400.0	6,900.0	10,437.4	6,900.0	44.6	49.1	90.00	1,096.5	1,044.5	877.1	784.2	92.91	9.440		
10,500.0	6,900.0	10,537.4	6,900.0	46.0	50.6	90.00	1,196.0	1,034.1	877.3	781.5	95.76	9.161		
10,600.0	6,900.0	10,637.4	6,900.0	47.5	52.1	90.00	1,295.4	1,023.7	877.5	778.8	98.69	8.891		
10,700.0	6,900.0	10,737.4	6,900.0	49.0	53.6	90.00	1,394.9	1,013.3	877.6	776.0	101.68	8.631		
10,800.0	6,900.0	10,837.4	6,900.0	50.6	55.2	90.00	1,494.3	1,002.9	877.8	773.1	104.74	8.381		
10,900.0	6,900.0	10,937.4	6,900.0	52.1	56.8	90.00	1,593.8	992.5	878.0	770.1	107.85	8.141		
11,000.0	6,900.0	11,037.4	6,900.0	53.7	58.4	90.00	1,693.3	982.2	878.2	767.1	111.02	7.910		
11,100.0	6,900.0	11,137.4	6,900.0	55.3	60.0	90.00	1,792.7	971.8	878.3	764.1	114.23	7.689		
11,200.0	6,900.0	11,237.4	6,900.0	57.0	61.6	90.00	1,892.2	961.4	878.5	761.0	117.49	7.478		
11,300.0	6,900.0	11,337.4	6,900.0	58.6	63.3	90.00	1,991.6	951.0	878.7	757.9	120.79	7.275		
11,400.0	6,900.0	11,437.4	6,900.0	60.3	64.9	90.00	2,091.1	940.6	878.9	754.7	124.12	7.081		
11,500.0	6,900.0	11,537.4	6,900.0	62.0	66.6	90.00	2,190.6	930.2	879.0	751.5	127.49	6.895		
11,600.0	6,900.0	11,637.4	6,900.0	63.7	68.3	90.00	2,290.0	919.8	879.2	748.3	130.89	6.717		
11,696.7	6,900.0	11,639.7	6,900.0	65.4	68.4	90.00	2,292.3	919.6	884.4	751.8	132.60	6.670 SF		

Offset Design		SRC Vista (N/S) Pad Sec.2-T4N-R68W - SRC Vista M-2CHZ - Wellbore #1 - Plan #1 (11-10-14)											Offset Site Error:		0.0 ft
Survey Program: 0-MWD													Offset Well Error:		0.0 ft
Reference		Offset		Semi Major Axis			Distance							Warning	
Measured Depth	Vertical Depth	Measured Depth	Vertical Depth	Reference	Offset	Highside Toolface	Offset Wellbore Centre		Between Centres	Between Ellipses	Minimum Separation	Separation Factor			
(ft)	(ft)	(ft)	(ft)	(ft)	(ft)	(°)	+N/-S (ft)	+E/-W (ft)	(ft)	(ft)	(ft)				
0.0	0.0	0.0	0.0	0.0	0.0	179.91	-180.0	0.3	180.0						
100.0	100.0	100.0	100.0	0.1	0.1	179.91	-180.0	0.3	180.0	179.7		0.22	800.693		
200.0	200.0	200.0	200.0	0.3	0.3	179.91	-180.0	0.3	180.0	179.3		0.67	266.898 CC, ES		
300.0	300.0	295.7	295.6	0.6	0.5	179.56	-181.1	1.4	181.2	180.1	1.10	165.207			
400.0	400.0	391.1	391.0	0.8	0.7	178.53	-184.5	4.7	184.8	183.3	1.52	121.205			
500.0	500.0	486.1	485.7	1.0	1.0	176.91	-190.2	10.3	191.0	189.0	1.97	96.786			
600.0	600.0	580.5	579.4	1.2	1.2	174.82	-198.0	17.9	199.9	197.4	2.44	81.880			
700.0	700.0	674.1	672.0	1.5	1.5	172.42	-207.9	27.7	211.6	208.7	2.93	72.336			
800.0	800.0	766.7	763.0	1.7	1.9	169.84	-219.9	39.4	226.4	223.0	3.42	66.126			
900.0	900.0	858.1	852.3	1.9	2.3	167.23	-233.7	53.0	244.3	240.4	3.93	62.137			
1,000.0	1,000.0	948.1	939.6	2.1	2.7	164.68	-249.3	68.3	265.5	261.0	4.45	59.702			
1,100.0	1,100.0	1,036.7	1,024.8	2.4	3.2	162.27	-266.6	85.2	289.8	284.8	4.96	58.386			
1,200.0	1,200.0	1,123.6	1,107.7	2.6	3.7	160.04	-285.4	103.6	317.3	311.8	5.48	57.897			
1,300.0	1,300.0	1,208.8	1,188.1	2.8	4.3	158.01	-305.5	123.4	347.9	341.9	6.00	58.026			
1,400.0	1,400.0	1,292.2	1,266.0	3.0	4.9	156.18	-326.8	144.3	381.6	375.1	6.51	58.602			
1,500.0	1,500.0	1,373.7	1,341.1	3.3	5.5	154.54	-349.3	166.3	418.2	411.1	7.03	59.513			
1,600.0	1,600.0	1,453.2	1,413.6	3.5	6.2	153.08	-372.6	189.2	457.5	450.0	7.54	60.706			
1,700.0	1,700.0	1,531.5	1,484.1	3.7	6.9	151.78	-397.0	213.0	499.6	491.5	8.05	62.082			
1,800.0	1,800.0	1,621.0	1,564.1	3.9	7.7	150.47	-425.5	241.0	542.9	534.3	8.59	63.233			
1,900.0	1,900.0	1,710.4	1,644.2	4.2	8.5	149.35	-454.0	269.0	586.5	577.3	9.12	64.305			
2,000.0	2,000.0	1,799.9	1,724.2	4.4	9.4	148.39	-482.5	297.0	630.1	620.5	9.65	65.281			
2,100.0	2,100.0	1,890.0	1,804.8	4.6	10.2	-27.28	-511.3	325.1	672.6	662.7	9.92	67.807			
2,200.0	2,199.8	1,981.1	1,886.4	4.8	11.1	-27.83	-540.3	353.6	712.3	701.9	10.42	68.373			
2,300.0	2,299.5	2,073.2	1,968.8	4.9	11.9	-28.43	-569.7	382.4	749.4	738.5	10.92	68.635			
2,400.0	2,398.7	2,166.2	2,052.0	5.1	12.8	-29.10	-599.4	411.5	783.8	772.4	11.42	68.634			
2,500.0	2,497.5	2,260.0	2,135.9	5.3	13.7	-29.83	-629.3	440.8	815.6	803.6	11.92	68.396			
2,600.0	2,595.6	2,354.4	2,220.3	5.6	14.6	-30.63	-659.4	470.3	844.7	832.3	12.43	67.933			
2,700.0	2,693.1	2,449.3	2,305.3	5.8	15.5	-31.49	-689.6	500.0	871.3	858.3	12.96	67.249			
2,800.0	2,789.6	2,544.6	2,390.5	6.2	16.4	-32.43	-720.0	529.8	895.3	881.8	13.50	66.338			
2,900.0	2,885.3	2,640.2	2,476.1	6.5	17.3	-33.44	-750.5	559.7	916.9	902.9	14.07	65.190			
3,000.0	2,979.8	2,736.0	2,561.8	7.0	18.2	-34.54	-781.1	589.7	936.1	921.4	14.67	63.791			
3,100.0	3,073.2	2,831.9	2,647.6	7.5	19.1	-35.71	-811.6	619.6	953.0	937.7	15.34	62.131			
3,200.0	3,165.2	2,927.7	2,733.3	8.0	20.1	-36.97	-842.2	649.6	967.7	951.6	16.07	60.205			
3,300.0	3,255.8	3,023.3	2,818.8	8.7	21.0	-38.33	-872.7	679.5	980.3	963.4	16.90	58.014			
3,400.0	3,344.9	3,118.6	2,904.1	9.4	21.9	-39.78	-903.1	709.3	990.9	973.1	17.83	55.577			
3,500.0	3,432.4	3,213.6	2,989.1	10.2	22.8	-41.32	-933.3	739.0	999.8	980.9	18.89	52.924 SF			

<b>Company:</b>	Synergy Resources	<b>Local Co-ordinate Reference:</b>	Well SRC Vista 11-2NHZ
<b>Project:</b>	SEC.2-T4N-R68W	<b>TVD Reference:</b>	WELL @ 5013.0ft (Original Well Elev)
<b>Reference Site:</b>	SRC Vista (N/S) Pad Sec.2-T4N-R68W	<b>MD Reference:</b>	WELL @ 5013.0ft (Original Well Elev)
<b>Site Error:</b>	0.0ft	<b>North Reference:</b>	True
<b>Reference Well:</b>	SRC Vista 11-2NHZ	<b>Survey Calculation Method:</b>	Minimum Curvature
<b>Well Error:</b>	0.0ft	<b>Output errors are at</b>	2.00 sigma
<b>Reference Wellbore</b>	Wellbore #1	<b>Database:</b>	Landmark
<b>Reference Design:</b>	Plan #1 (11-06-14)	<b>Offset TVD Reference:</b>	Offset Datum

Offset Design												Offset Site Error:	0.0 ft
SRC Vista (N/S) Pad Sec.2-T4N-R68W - SRC Vista M-2NHZ - Wellbore #1 - Plan #1 (11-10-14)												Offset Well Error:	0.0 ft
Survey Program: 0-MWD													
Reference		Offset		Semi Major Axis			Distance						
Measured Depth (ft)	Vertical Depth (ft)	Measured Depth (ft)	Vertical Depth (ft)	Reference (ft)	Offset (ft)	Highside Toolface (°)	Offset Wellbore Centre +N/-S (ft)	+E/-W (ft)	Between Centres (ft)	Between Ellipses (ft)	Minimum Separation (ft)	Separation Factor	Warning
0.0	0.0	0.0	0.0	0.0	0.0	180.00	-159.9	0.0	159.9				
100.0	100.0	100.0	100.0	0.1	0.1	180.00	-159.9	0.0	159.9	159.7	0.22	711.546	
200.0	200.0	200.0	200.0	0.3	0.3	180.00	-159.9	0.0	159.9	159.3	0.67	237.182	
300.0	300.0	300.0	300.0	0.6	0.6	180.00	-159.9	0.0	159.9	158.8	1.12	142.309	
400.0	400.0	400.0	400.0	0.8	0.8	180.00	-159.9	0.0	159.9	158.4	1.57	101.649 CC, ES	
500.0	500.0	495.9	495.9	1.0	1.0	179.63	-161.1	1.0	161.2	159.2	1.99	80.895	
600.0	600.0	591.6	591.4	1.2	1.2	178.55	-164.8	4.2	165.1	162.7	2.41	68.551	
700.0	700.0	686.9	686.4	1.5	1.4	176.87	-170.8	9.4	171.6	168.8	2.84	60.426	
800.0	800.0	781.5	780.4	1.7	1.6	174.73	-179.2	16.5	181.0	177.7	3.29	55.026	
900.0	900.0	875.3	873.1	1.9	1.9	172.31	-189.8	25.6	193.4	189.6	3.75	51.510	
1,000.0	1,000.0	968.1	964.3	2.1	2.2	169.76	-202.5	36.6	208.9	204.6	4.23	49.358	
1,100.0	1,100.0	1,059.7	1,053.8	2.4	2.6	167.22	-217.3	49.3	227.5	222.8	4.72	48.224	
1,200.0	1,200.0	1,149.9	1,141.4	2.6	3.0	164.79	-233.9	63.6	249.4	244.2	5.21	47.864	
1,300.0	1,300.0	1,238.6	1,226.7	2.8	3.5	162.53	-252.4	79.4	274.5	268.8	5.71	48.101	
1,400.0	1,400.0	1,325.8	1,309.7	3.0	4.0	160.47	-272.4	96.6	302.8	296.6	6.21	48.798	
1,500.0	1,500.0	1,411.1	1,390.3	3.3	4.5	158.61	-293.9	115.1	334.1	327.4	6.70	49.852	
1,600.0	1,600.0	1,500.0	1,473.2	3.5	5.2	156.86	-318.1	136.0	368.5	361.3	7.22	51.059	
1,700.0	1,700.0	1,576.3	1,543.5	3.7	5.7	155.50	-340.5	155.2	405.6	397.9	7.70	52.684	
1,800.0	1,800.0	1,656.0	1,616.1	3.9	6.4	154.21	-365.4	176.6	445.6	437.4	8.20	54.367	
1,900.0	1,900.0	1,733.6	1,685.9	4.2	7.1	153.07	-391.1	198.7	488.1	479.4	8.69	56.185	
2,000.0	2,000.0	1,811.7	1,755.3	4.4	7.8	152.04	-418.4	222.1	533.2	524.0	9.19	58.020	
2,100.0	2,100.0	1,900.7	1,834.0	4.6	8.6	-23.84	-450.0	249.3	577.7	568.2	9.51	60.737	
2,200.0	2,199.8	1,991.0	1,913.7	4.8	9.5	-24.55	-482.0	276.8	619.6	609.6	9.99	62.008	
2,300.0	2,299.5	2,082.3	1,994.4	4.9	10.4	-25.27	-514.4	304.7	658.7	648.2	10.48	62.866	
2,400.0	2,398.7	2,174.7	2,076.0	5.1	11.3	-26.03	-547.2	332.8	695.1	684.1	10.97	63.369	
2,500.0	2,497.5	2,267.9	2,158.4	5.3	12.2	-26.83	-580.3	361.3	728.8	717.3	11.47	63.555	
2,600.0	2,595.6	2,361.9	2,241.5	5.6	13.1	-27.68	-613.7	389.9	759.8	747.8	11.97	63.452	
2,700.0	2,693.1	2,456.5	2,325.1	5.8	14.1	-28.58	-647.2	418.8	788.1	775.7	12.50	63.075	
2,800.0	2,789.6	2,551.7	2,409.2	6.2	15.0	-29.54	-681.0	447.8	813.9	800.8	13.04	62.430	
2,900.0	2,885.3	2,647.3	2,493.7	6.5	15.9	-30.56	-715.0	477.0	837.0	823.4	13.61	61.517	
3,000.0	2,979.8	2,743.2	2,578.5	7.0	16.9	-31.66	-749.0	506.2	857.7	843.5	14.22	60.333	
3,100.0	3,073.2	2,839.3	2,663.4	7.5	17.8	-32.83	-783.1	535.5	875.9	861.0	14.88	58.872	
3,200.0	3,165.2	2,935.4	2,748.4	8.0	18.8	-34.08	-817.2	564.9	891.7	876.1	15.61	57.135	
3,300.0	3,255.8	3,031.5	2,833.3	8.7	19.7	-35.42	-851.3	594.2	905.3	888.9	16.42	55.126	
3,400.0	3,344.9	3,127.5	2,918.1	9.4	20.7	-36.86	-885.4	623.4	916.7	899.4	17.34	52.863	
3,500.0	3,432.4	3,223.2	3,002.7	10.2	21.6	-38.39	-919.3	652.6	926.2	907.8	18.39	50.374	
3,600.0	3,518.1	3,318.5	3,086.9	11.0	22.6	-40.03	-953.2	681.7	933.8	914.2	19.58	47.702	
3,700.0	3,602.0	3,413.2	3,170.6	11.9	23.5	-41.78	-986.8	710.6	939.7	918.8	20.93	44.901	
3,784.7	3,671.5	3,493.0	3,241.1	12.8	24.3	-43.34	-1,015.1	734.9	943.5	921.3	22.22	42.472	
3,800.0	3,683.9	3,507.4	3,253.8	12.9	24.5	-43.64	-1,020.2	739.3	944.1	921.7	22.46	42.038	
3,900.0	3,765.1	3,601.3	3,336.8	13.9	25.4	-45.58	-1,053.5	767.9	948.9	924.8	24.12	39.344	
4,000.0	3,846.3	3,695.2	3,419.8	15.0	26.3	-47.50	-1,086.9	796.6	954.9	929.0	25.88	36.900	
4,100.0	3,927.5	3,789.1	3,502.8	16.0	27.3	-49.40	-1,120.2	825.2	962.0	934.3	27.73	34.695	
4,200.0	4,008.8	3,883.0	3,585.8	17.1	28.2	-51.27	-1,153.5	853.9	970.4	940.7	29.66	32.712	
4,300.0	4,090.0	3,976.9	3,668.8	18.1	29.1	-53.11	-1,186.8	882.5	979.9	948.2	31.67	30.935	
4,400.0	4,171.2	4,070.8	3,751.7	19.2	30.1	-54.92	-1,220.2	911.1	990.4	956.7	33.75	29.345 SF	

**Company:** Synergy Resources  
**Project:** SEC.2-T4N-R68W  
**Reference Site:** SRC Vista (N/S) Pad Sec.2-T4N-R68W  
**Site Error:** 0.0ft  
**Reference Well:** SRC Vista 11-2NHZ  
**Well Error:** 0.0ft  
**Reference Wellbore:** Wellbore #1  
**Reference Design:** Plan #1 (11-06-14)

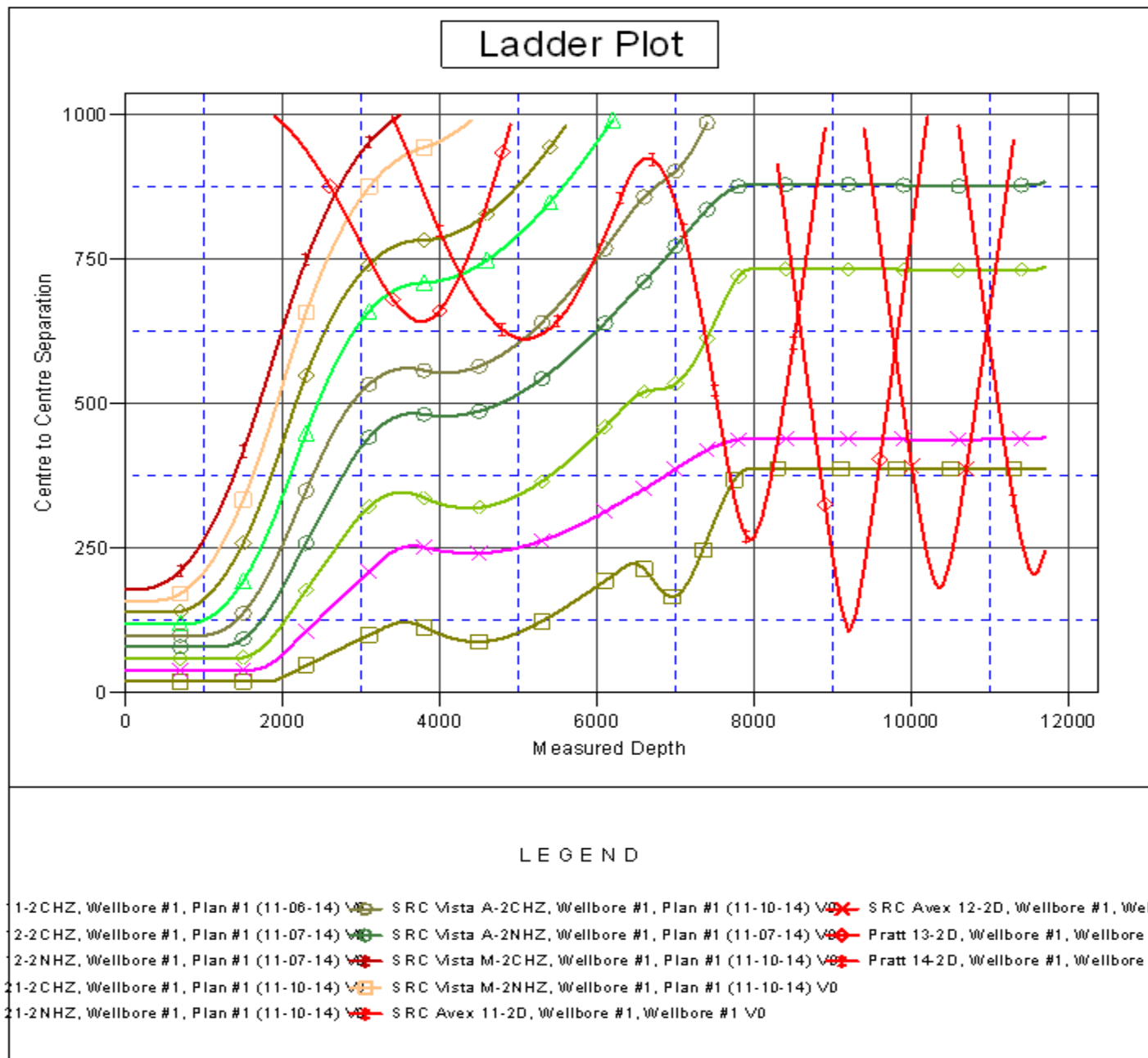
**Local Co-ordinate Reference:** Well SRC Vista 11-2NHZ  
**TVD Reference:** WELL @ 5013.0ft (Original Well Elev)  
**MD Reference:** WELL @ 5013.0ft (Original Well Elev)  
**North Reference:** True  
**Survey Calculation Method:** Minimum Curvature  
**Output errors are at** 2.00 sigma  
**Database:** Landmark  
**Offset TVD Reference:** Offset Datum

Reference Depths are relative to WELL @ 5013.0ft (Original Well Elev) Coordinates are relative to: SRC Vista 11-2NHZ

Offset Depths are relative to Offset Datum

Coordinate System is US State Plane 1983, Colorado Northern Zone

Grid Convergence at Surface is: 0.34°



**Company:** Synergy Resources  
**Project:** SEC.2-T4N-R68W  
**Reference Site:** SRC Vista (N/S) Pad Sec.2-T4N-R68W  
**Site Error:** 0.0ft  
**Reference Well:** SRC Vista 11-2NHZ  
**Well Error:** 0.0ft  
**Reference Wellbore:** Wellbore #1  
**Reference Design:** Plan #1 (11-06-14)

**Local Co-ordinate Reference:** Well SRC Vista 11-2NHZ  
**TVD Reference:** WELL @ 5013.0ft (Original Well Elev)  
**MD Reference:** WELL @ 5013.0ft (Original Well Elev)  
**North Reference:** True  
**Survey Calculation Method:** Minimum Curvature  
**Output errors are at** 2.00 sigma  
**Database:** Landmark  
**Offset TVD Reference:** Offset Datum

Reference Depths are relative to WELL @ 5013.0ft (Original Well Elev) Coordinates are relative to: SRC Vista 11-2NHZ  
 Offset Depths are relative to Offset Datum Coordinate System is US State Plane 1983, Colorado Northern Zone  
 Central Meridian is -105.500000 ° Grid Convergence at Surface is: 0.34°

