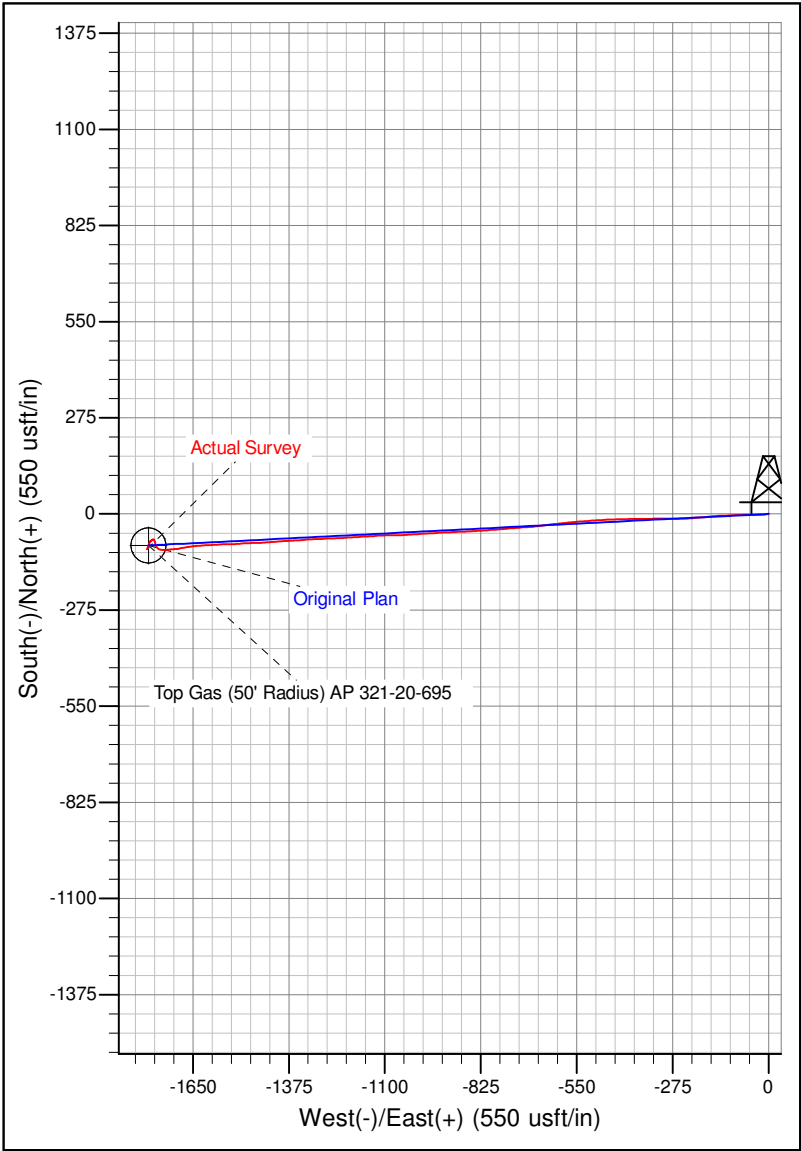
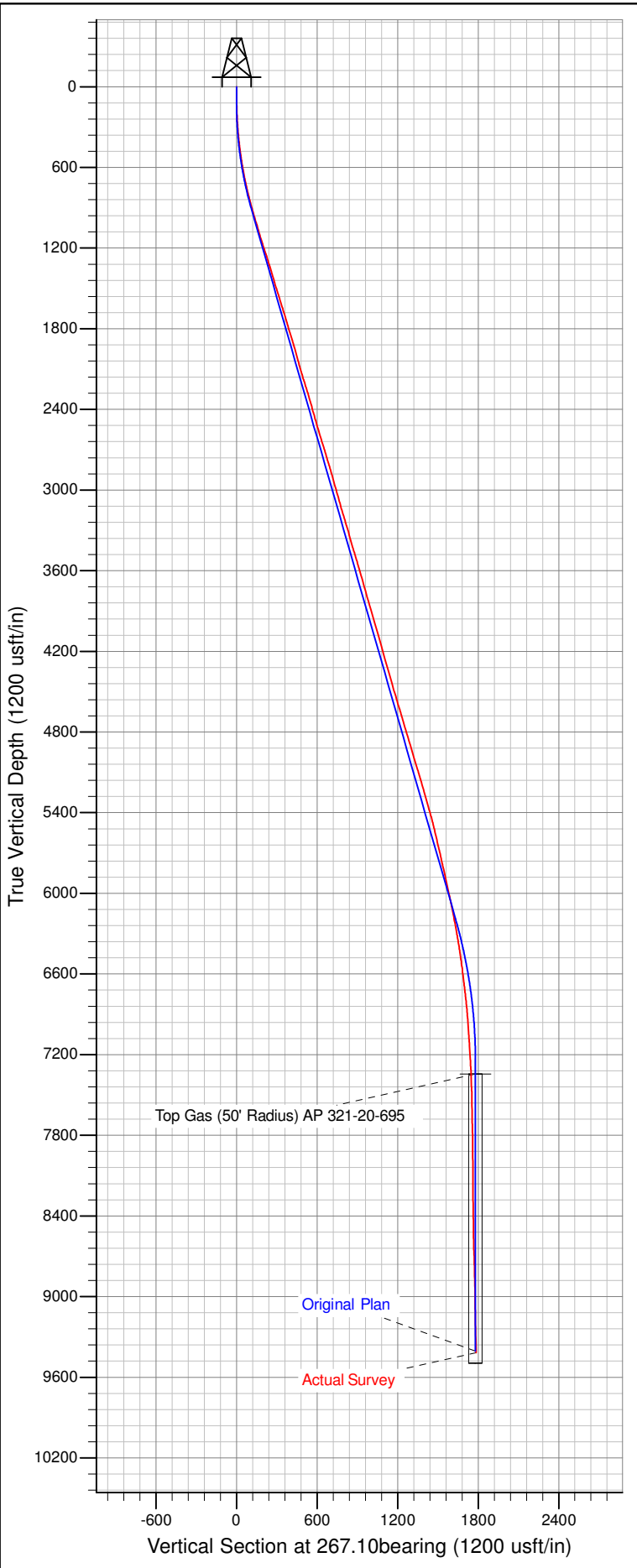




Well Name: AP 321-20-695  
 Surface Location: AP 21-20-695 Pad  
 North American Datum 1983 , US State Plane 1983 , Colorado Central Zone  
 Ground Elevation: 6909.00

+N/-S	+E/-W	Northing	Easting	Latitude	Longitude	Slot
0.00	0.00	1623264.50000	2288330.84000	39.51751	-108.02295	B06

KELLY BUSHING @ 6935.00usft (Nabors 573 (26' RKB) kjs)



Azimuths to True North  
 Magnetic North: 9.97°

Magnetic Field  
 Strength: 51939.1snT  
 Dip Angle: 65.67°  
 Date: 7/18/2014  
 Model: IGRF2010